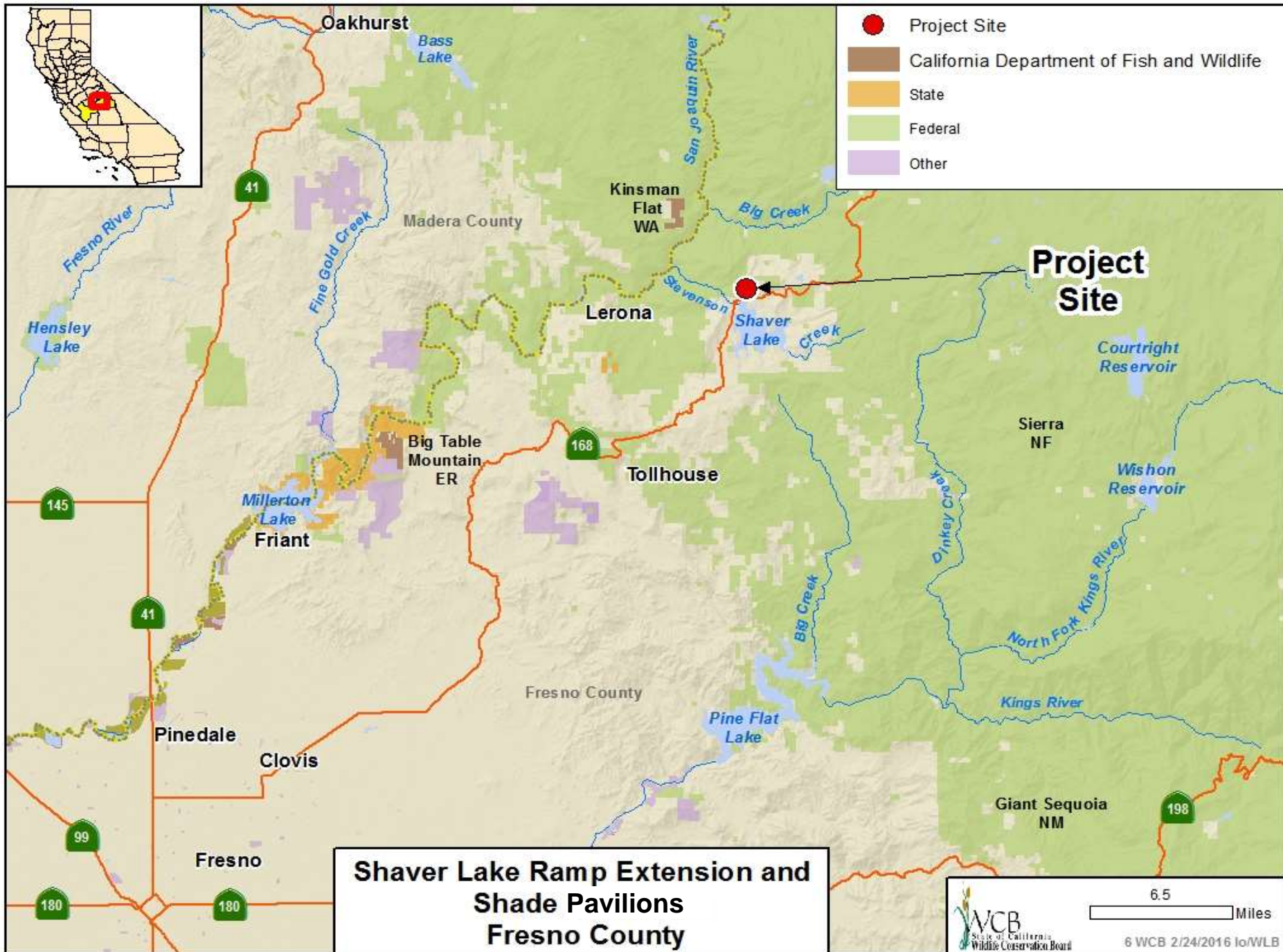




February 24, 2016, 10:00am
Wildlife Conservation Board Meeting
1416 9th Street, First floor Auditorium
Sacramento, California 95814

Sacramento, California 95814
1416 9th Street, First floor Auditorium
Wildlife Conservation Board Meeting
February 24, 2016, 10:00am

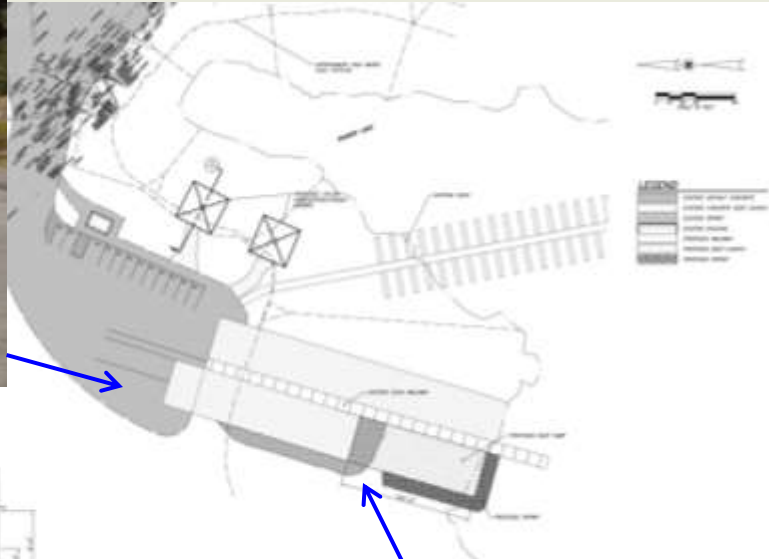


#6. Shaver Lake Ramp Extension and Shade Pavilions



Proposed project improvements include extending the existing west launch ramp and to construct two shade pavilions for boaters.

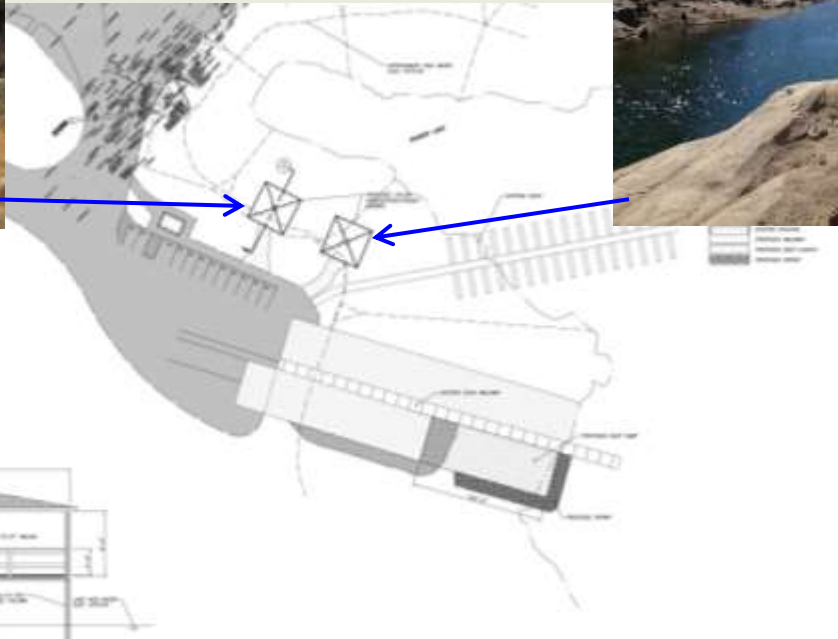
#6. Shaver Lake Ramp Extension and Shade Pavilions



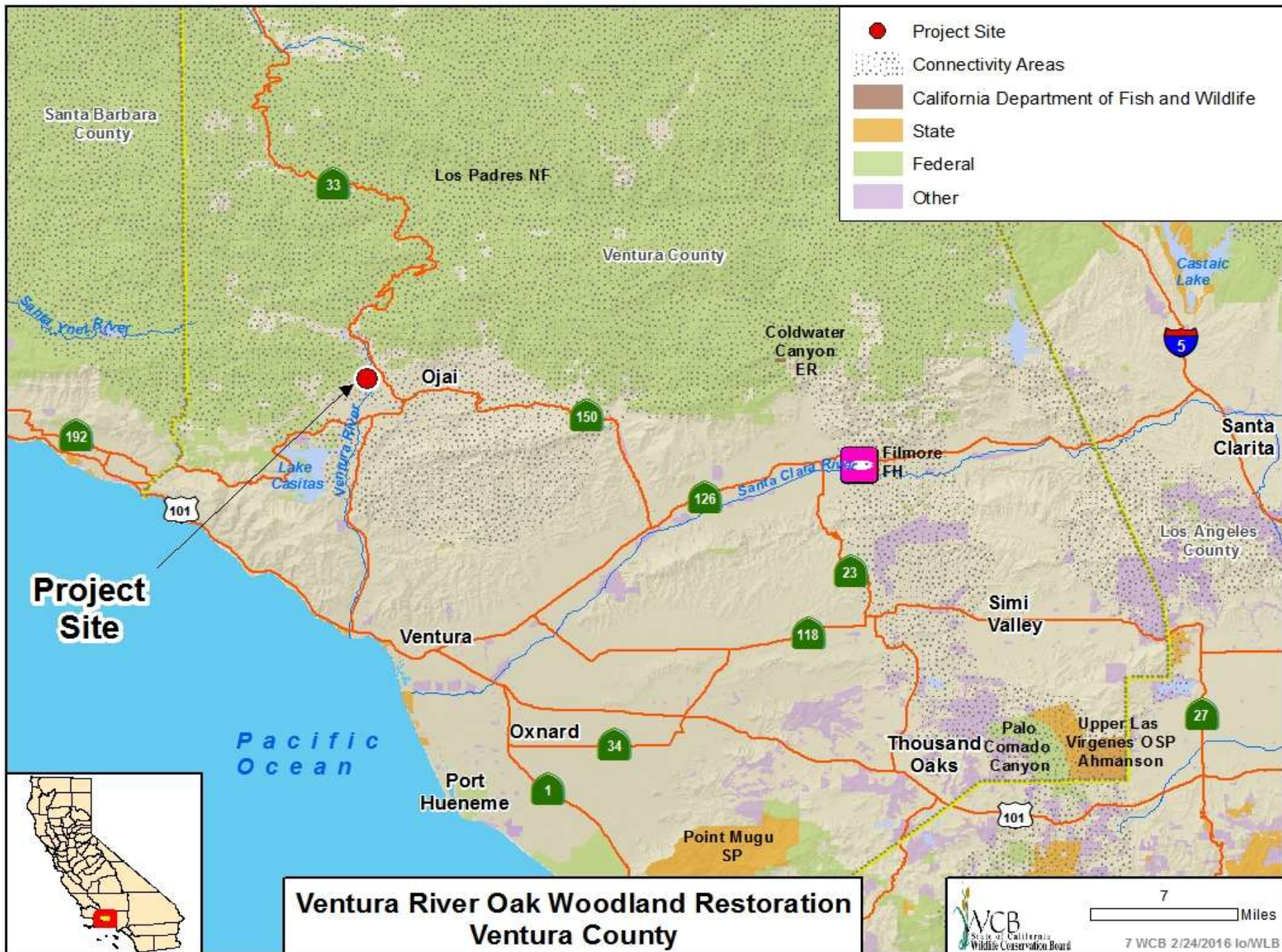
Pictured is the view from the end of the existing west launch ramp which is 120 feet in length and will be extended by 100± feet in length to allow for use in low water conditions.



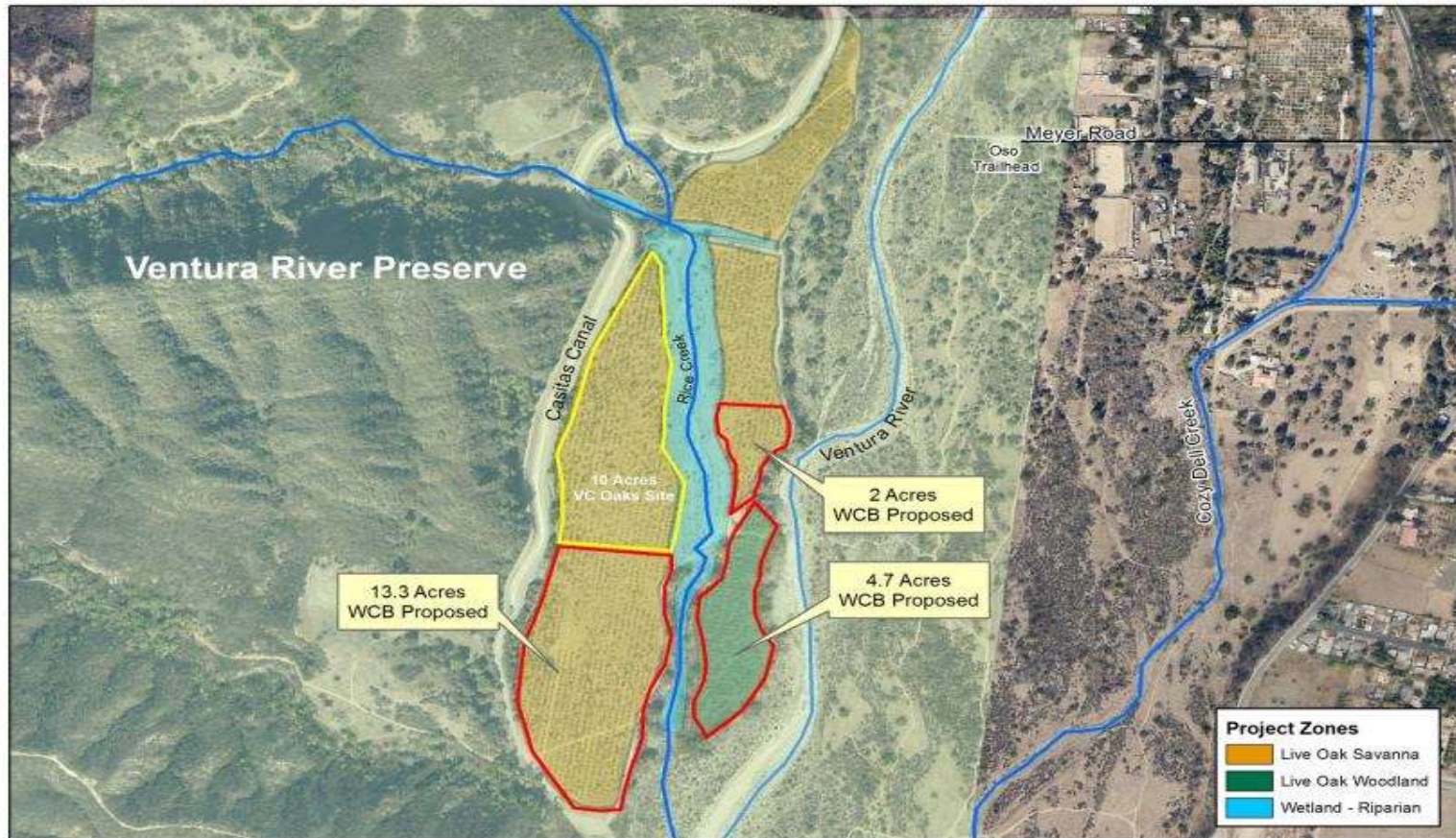
#6. Shaver Lake Ramp Extension and Shade Pavilions



Two shade pavilions adjacent to and east of both boat ramps will be constructed; shown above are views from each pavilion as proposed.



#7. Ventura River Oak Woodland Restoration

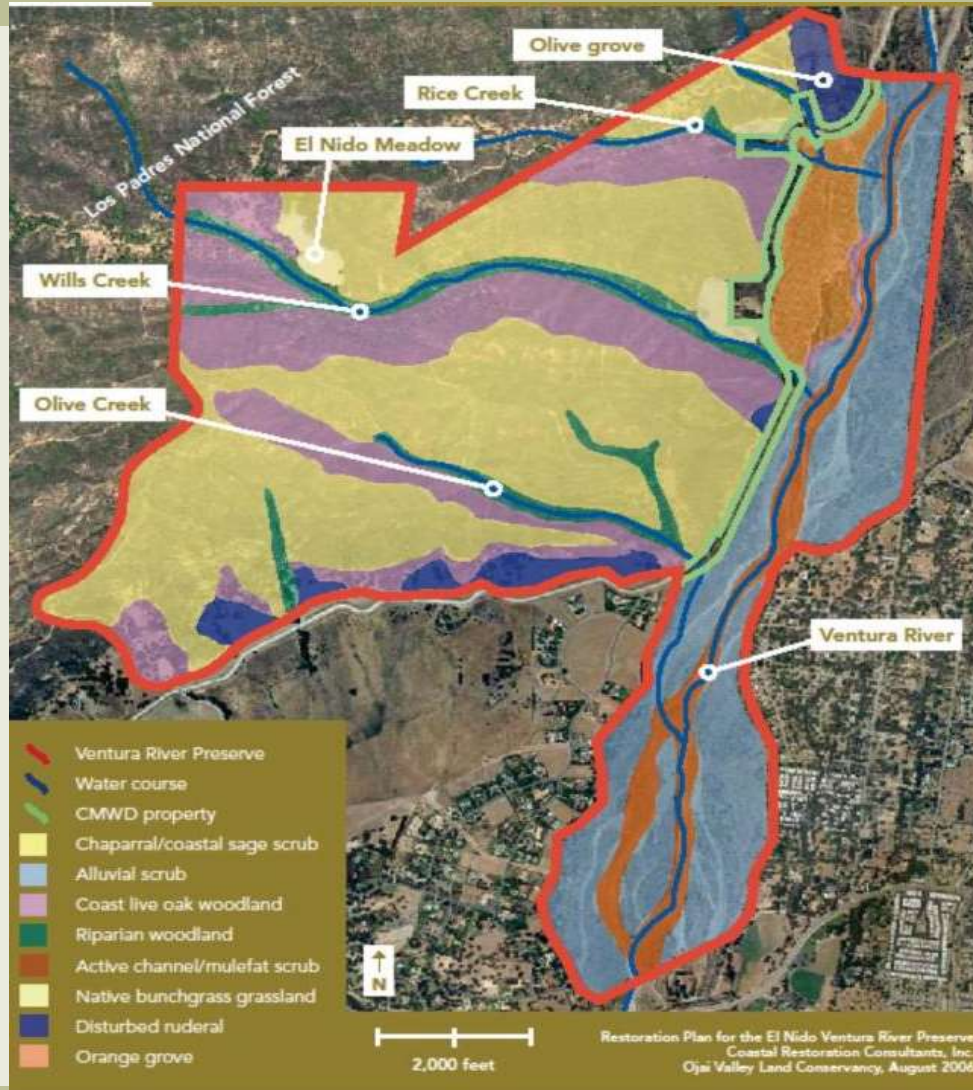


830 Feet

Ventura River Preserve
Oak Woodland and Savanna Restoration Project
WCB Oak Woodland Conservation Program

OJAI VALLEY
LAND CONSERVANCY
Protecting your views, trails, water and wildlife

#7. Ventura River Oak Woodland Restoration



General
Vegetation
communities of
the El Nido
Ventura River
Preserve

#7. Ventura River Oak Woodland Restoration



Aerial of the Orange Grove – Project Site

#7. Ventura River Oak Woodland Restoration



Before and after Orange Grove Mastication

#7. Ventura River Oak Woodland Restoration



Subject property

#7. Ventura River Oak Woodland Restoration



Subject property

#7. Ventura River Oak Woodland Restoration



Before and after Orange Grove mastication
– VC Oak Site

#7. Ventura River Oak Woodland Restoration



Oak Node on VC Oak site



#8. Climate Resiliency Planning for the South Coast Ecoregion



Map of proposed project area

#8. Climate Resiliency Planning for the South Coast Ecoregion



Oak grassland habitat

#8. Climate Resiliency Planning for the South Coast Ecoregion



Montane
chaparral
habitat

#8. Climate Resiliency Planning for the South Coast Ecoregion



Coniferous and shrub habitat

#8. Climate Resiliency Planning for the South Coast Ecoregion



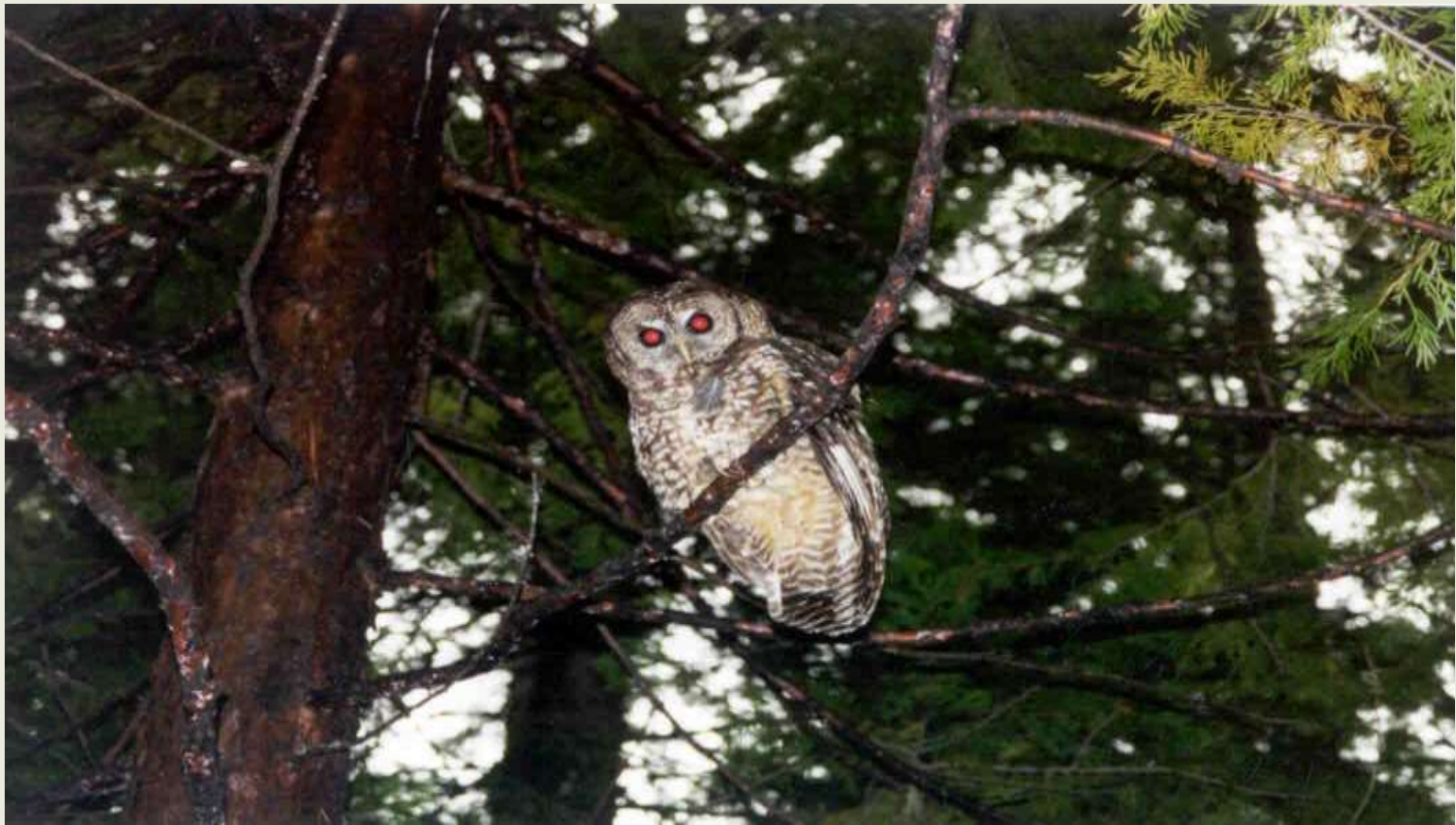
Collared bobcat

#8. Climate Resiliency Planning for the South Coast Ecoregion



Mountain lion

#8. Climate Resiliency Planning for the South Coast Ecoregion

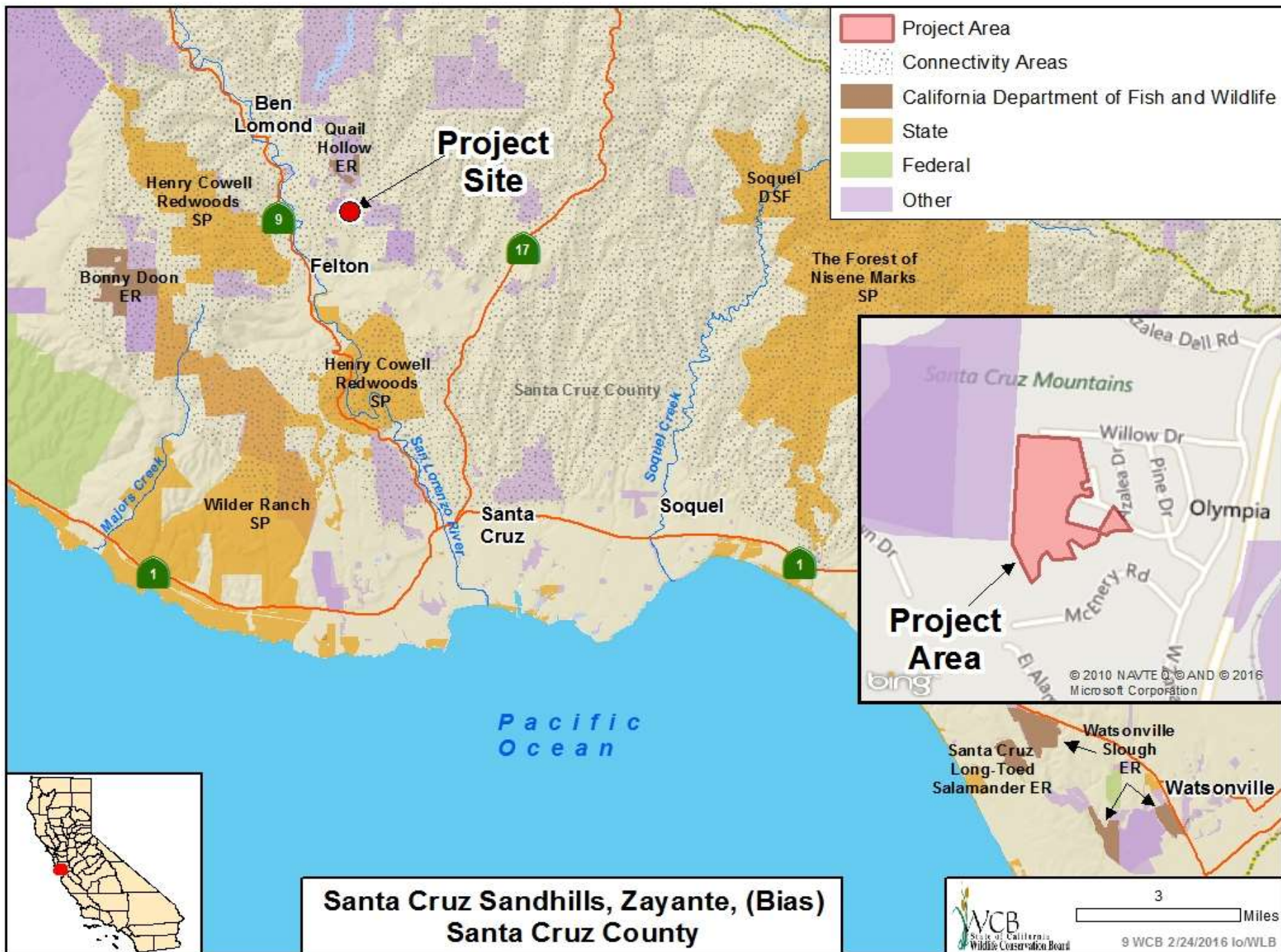


Spotted owl

#8. Climate Resiliency Planning for the South Coast Ecoregion



Western pond turtle



#9. Santa Cruz Sandhills, Zayante, (Bias)



Federally
endangered Ben
Lomond wallflower

#9. Santa Cruz Sandhills, Zayante, (Bias)



Extraordinarily rare sand parkland habitat

#9. Santa Cruz Sandhills, Zayante, (Bias)

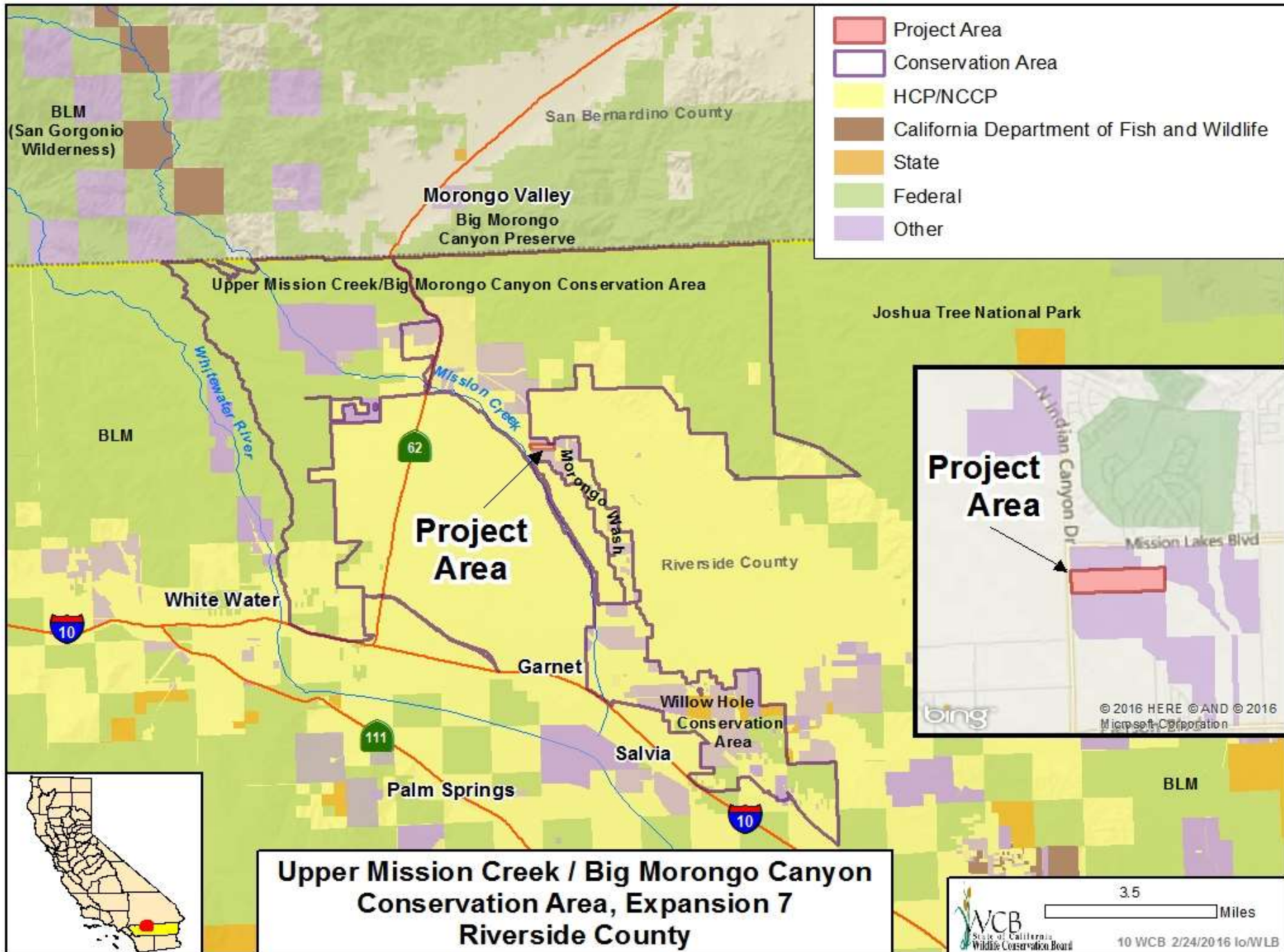


Mount Hermon june beetle on sand

#9. Santa Cruz Sandhills, Zayante, (Bias)



Endemic Ben Lomond buckwheat



#10. Upper Mission Creek/Big Morongo Canyon Conservation Area, Expansion 7



Easterly view of the Farkas property

#10. Upper Mission Creek/Big Morongo Canyon Conservation Area, Expansion 7



Easterly view of the Farkas property

#10. Upper Mission Creek/Big Morongo Canyon Conservation Area, Expansion 7

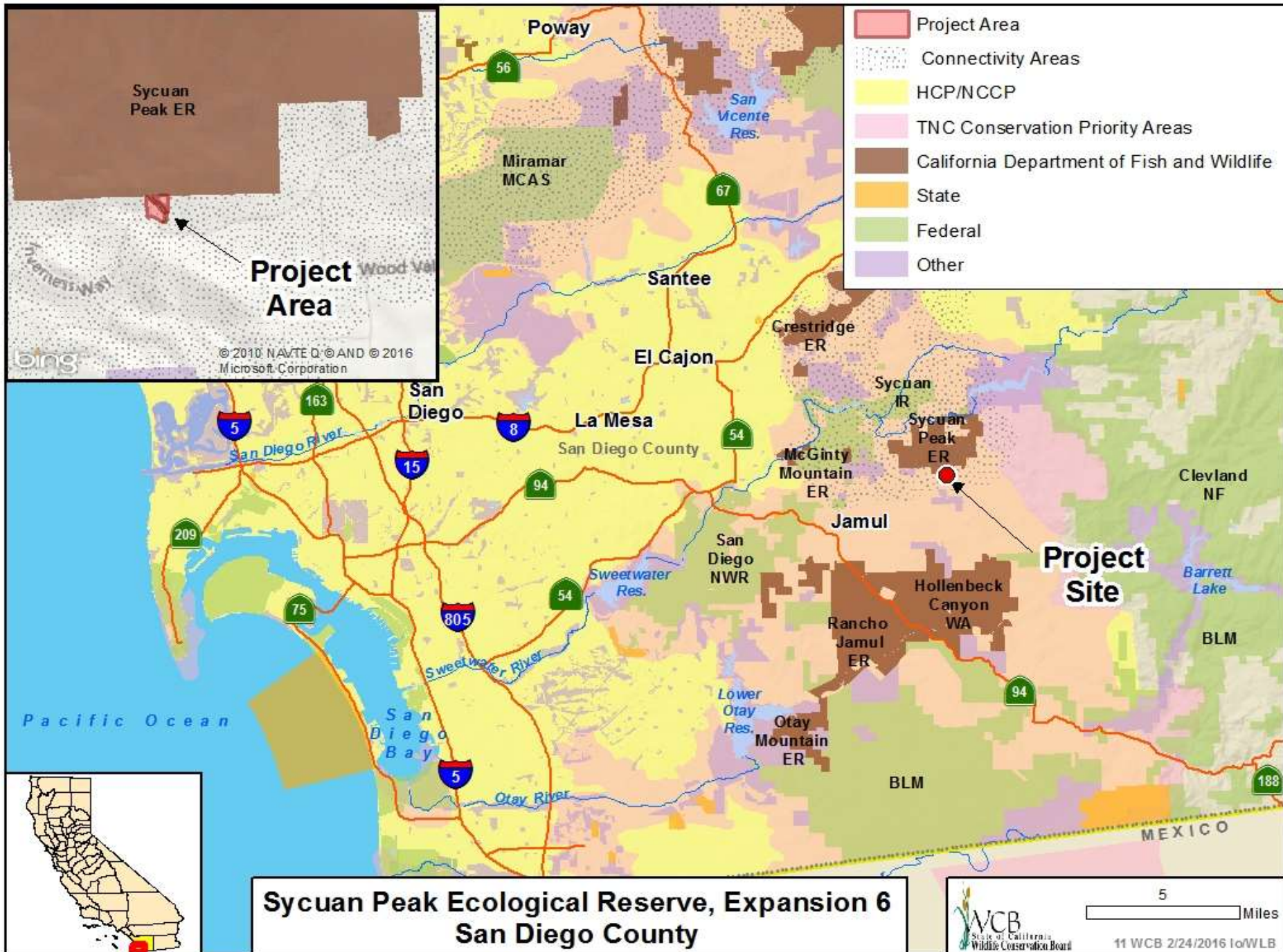


Northerly view of the Farkas property

#10. Upper Mission Creek/Big Morongo Canyon Conservation Area, Expansion 7



Northerly view of the Farkas property



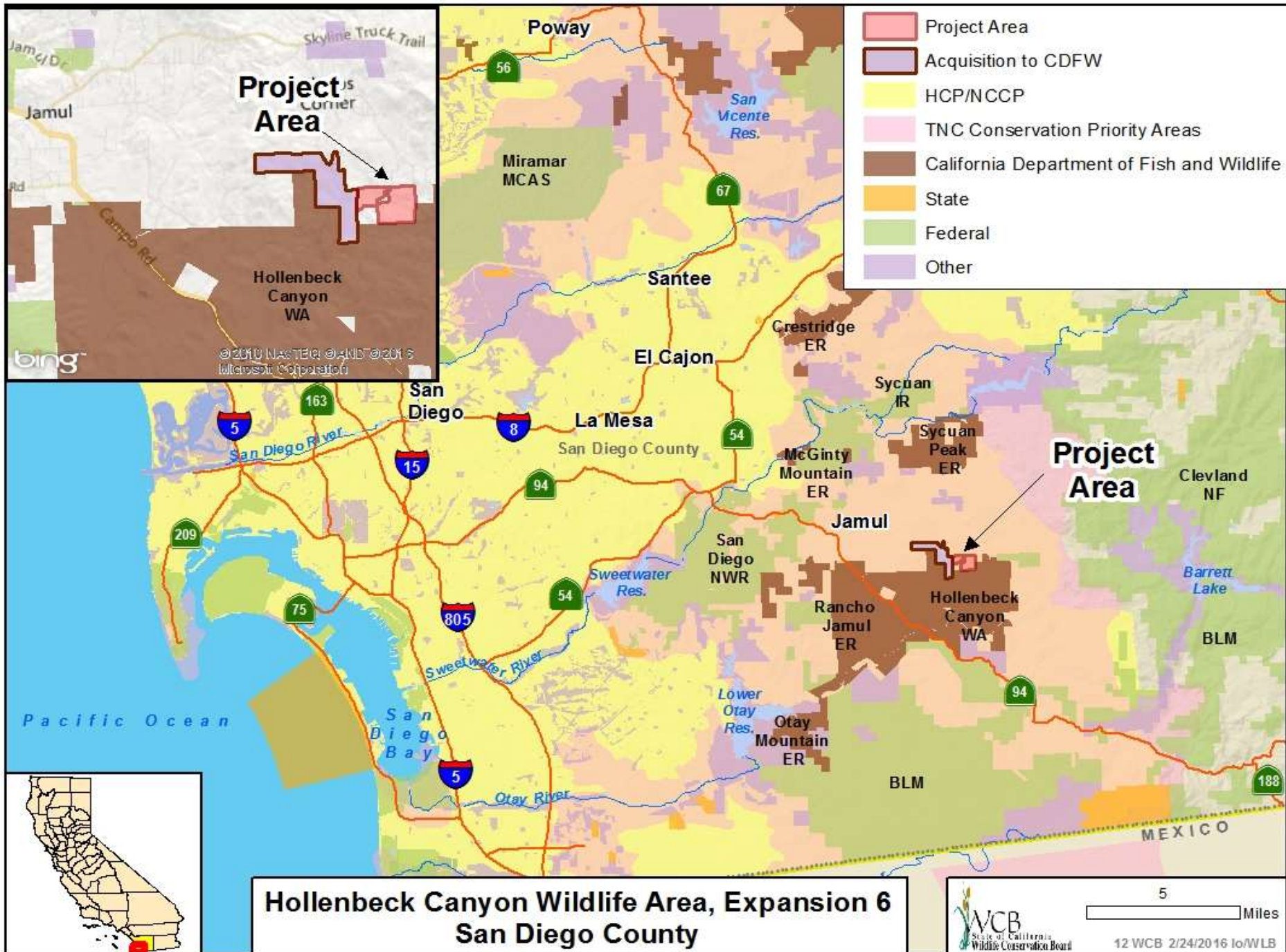
#11. Sycuan Peak Ecological Reserve, Expansion 6



#11. Sycuan Peak Ecological Reserve, Expansion 6



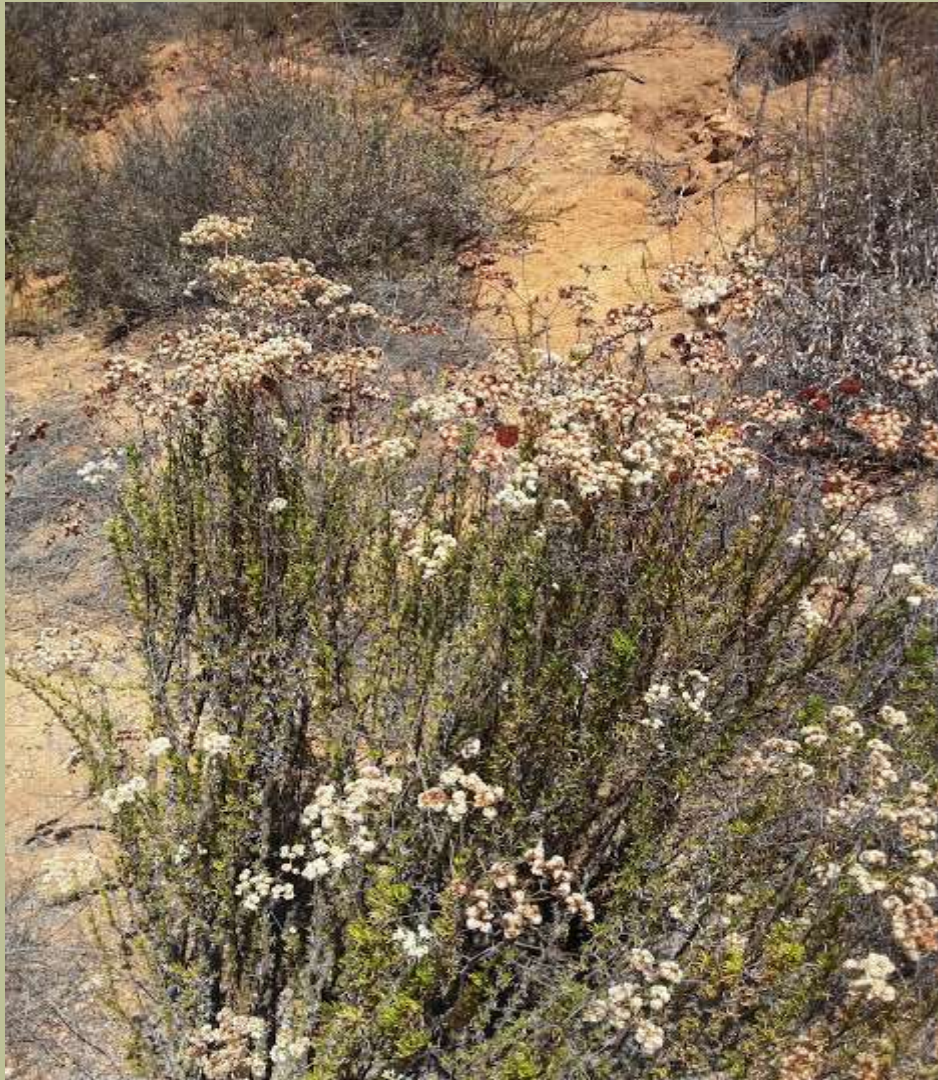
State endangered Dehesa bear grass



#12. Hollenbeck Canyon Wildlife Area, Expansion 6



#12. Hollenbeck Canyon Wildlife Area, Expansion 6



Buckwheat plant
found on property



#13. San Diego Mountain Ranch



#13. San Diego Mountain Ranch



#13. San Diego Mountain Ranch



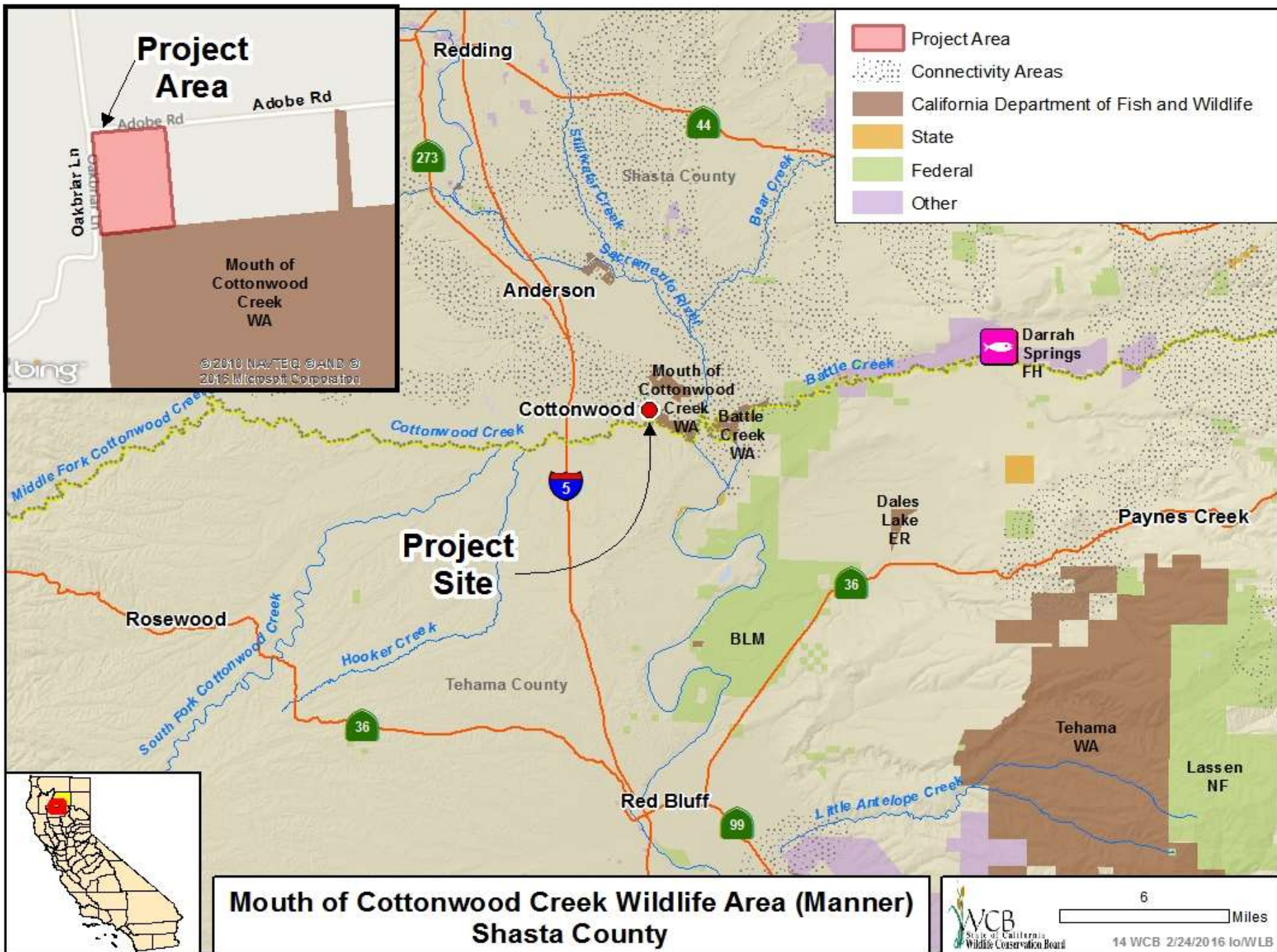
#13. San Diego Mountain Ranch





February 24, 2016, 10:00am
Wildlife Conservation Board Meeting
1416 9th Street, First floor Auditorium
Sacramento, California 95814

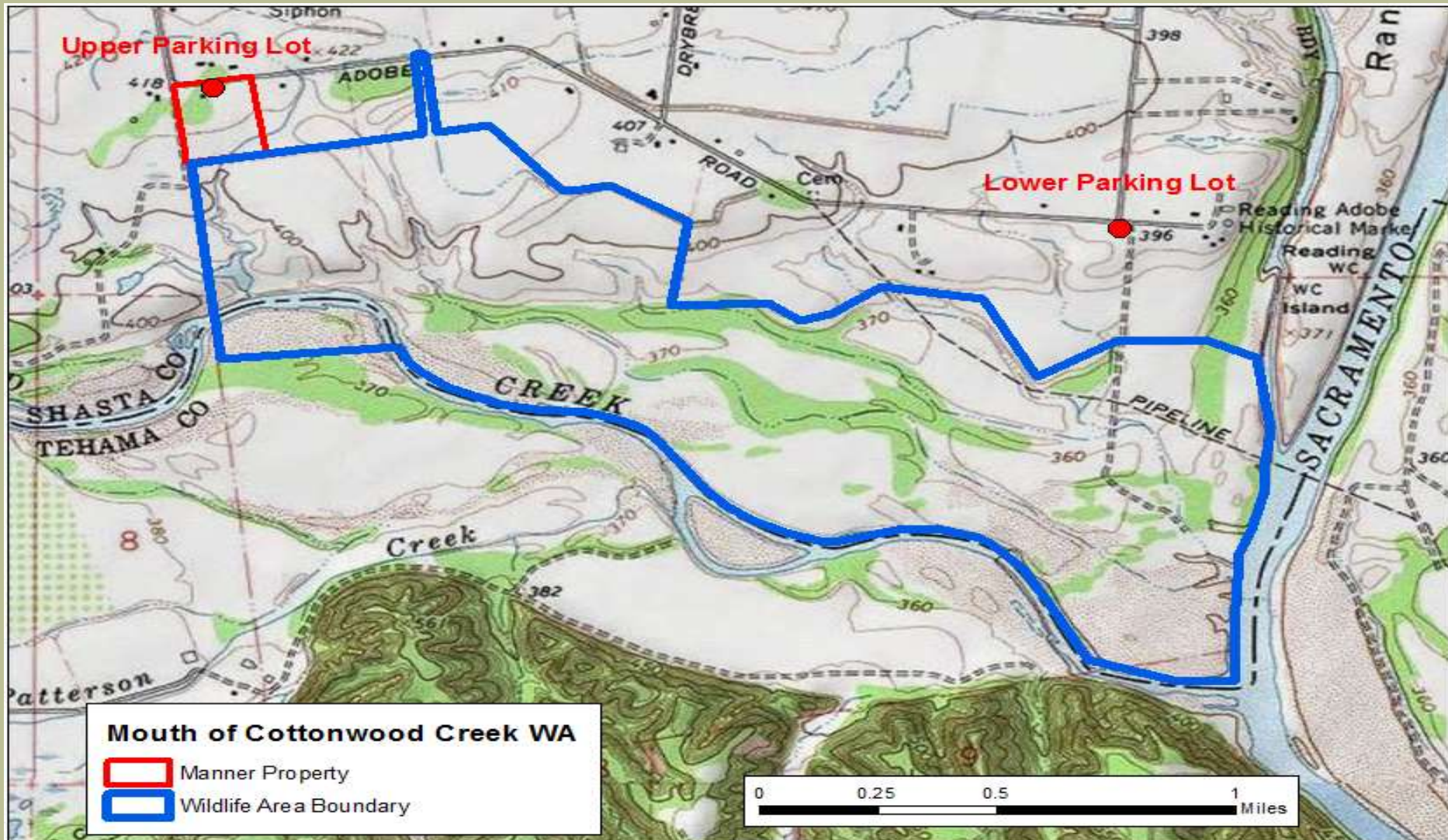
Sacramento, California 95814
1416 9th Street, First floor Auditorium
Wildlife Conservation Board Meeting
February 24, 2016, 10:00am



#14. Mouth of Cottonwood Creek Wildlife Area (Manner)



#14. Mouth of Cottonwood Creek Wildlife Area (Manner)



#14. Mouth of Cottonwood Creek Wildlife Area (Manner)



The Property will become part of the
Cottonwood Creek Wildlife Area

#14. Mouth of Cottonwood Creek Wildlife Area (Manner)

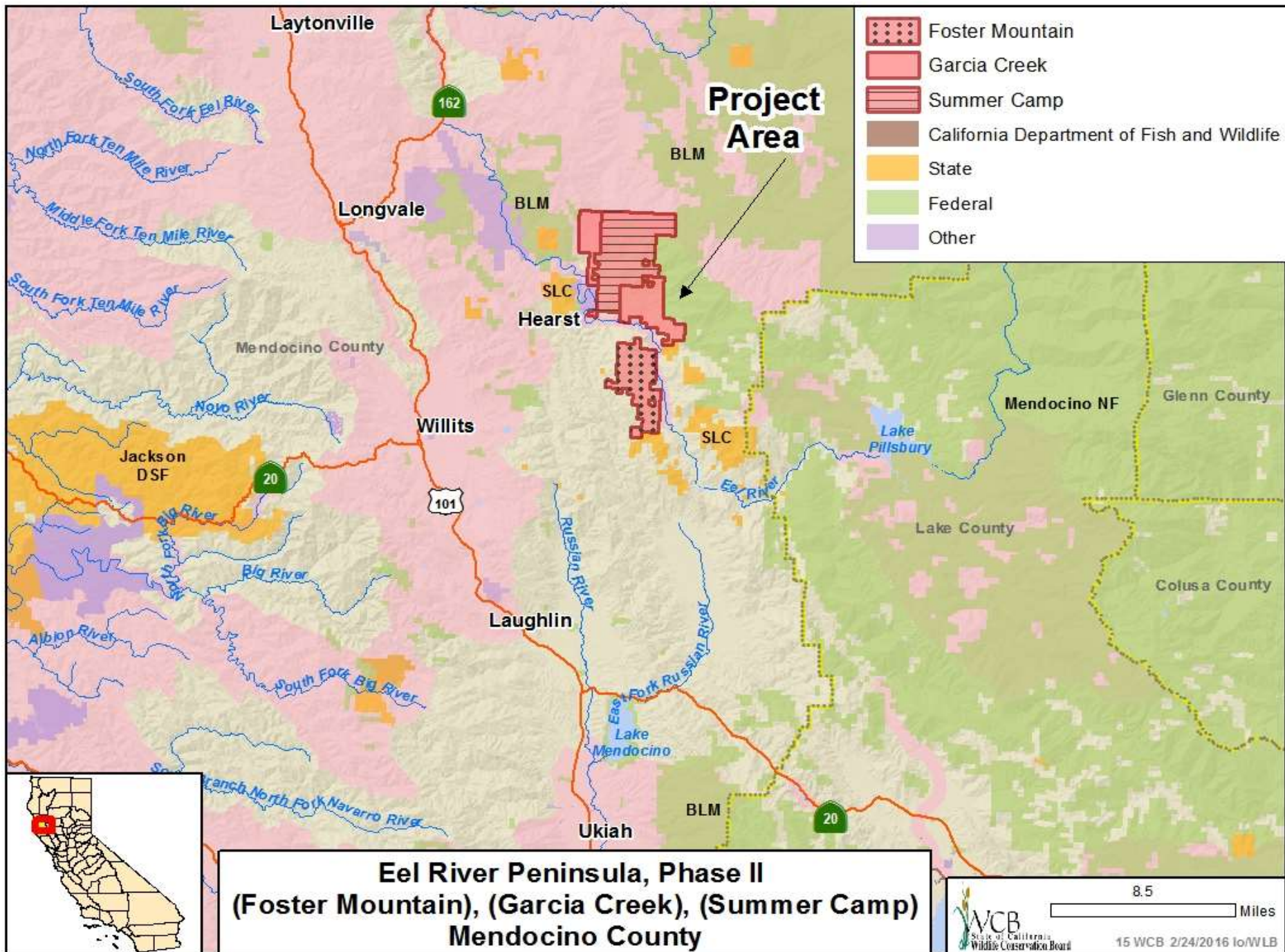


Scenic view of the subject property

#14. Mouth of Cottonwood Creek Wildlife Area (Manner)



Northerly facing view of subject property



#15. Eel River Preserve, Phase II (Foster Mountain), (Garcia Creek), (Summer Camp)



Coastal view from Summer Camp

#15. Eel River Preserve, Phase II (Foster Mountain), (Garcia Creek), (Summer Camp)



Meadow on Foster Mountain

#15. Eel River Preserve, Phase II (Foster Mountain), (Garcia Creek), (Summer Camp)



Pacific fisher on property

#15. Eel River Preserve, Phase II (Foster Mountain), (Garcia Creek), (Summer Camp)



Lake on Summer Camp

#15. Eel River Preserve, Phase II (Foster Mountain), (Garcia Creek), (Summer Camp)



Bear cubs

#15. Eel River Preserve, Phase II (Foster Mountain), (Garcia Creek), (Summer Camp)



#15. Eel River Preserve, Phase II (Foster Mountain), (Garcia Creek), (Summer Camp)



#15. Eel River Preserve, Phase II (Foster Mountain), (Garcia Creek), (Summer Camp)

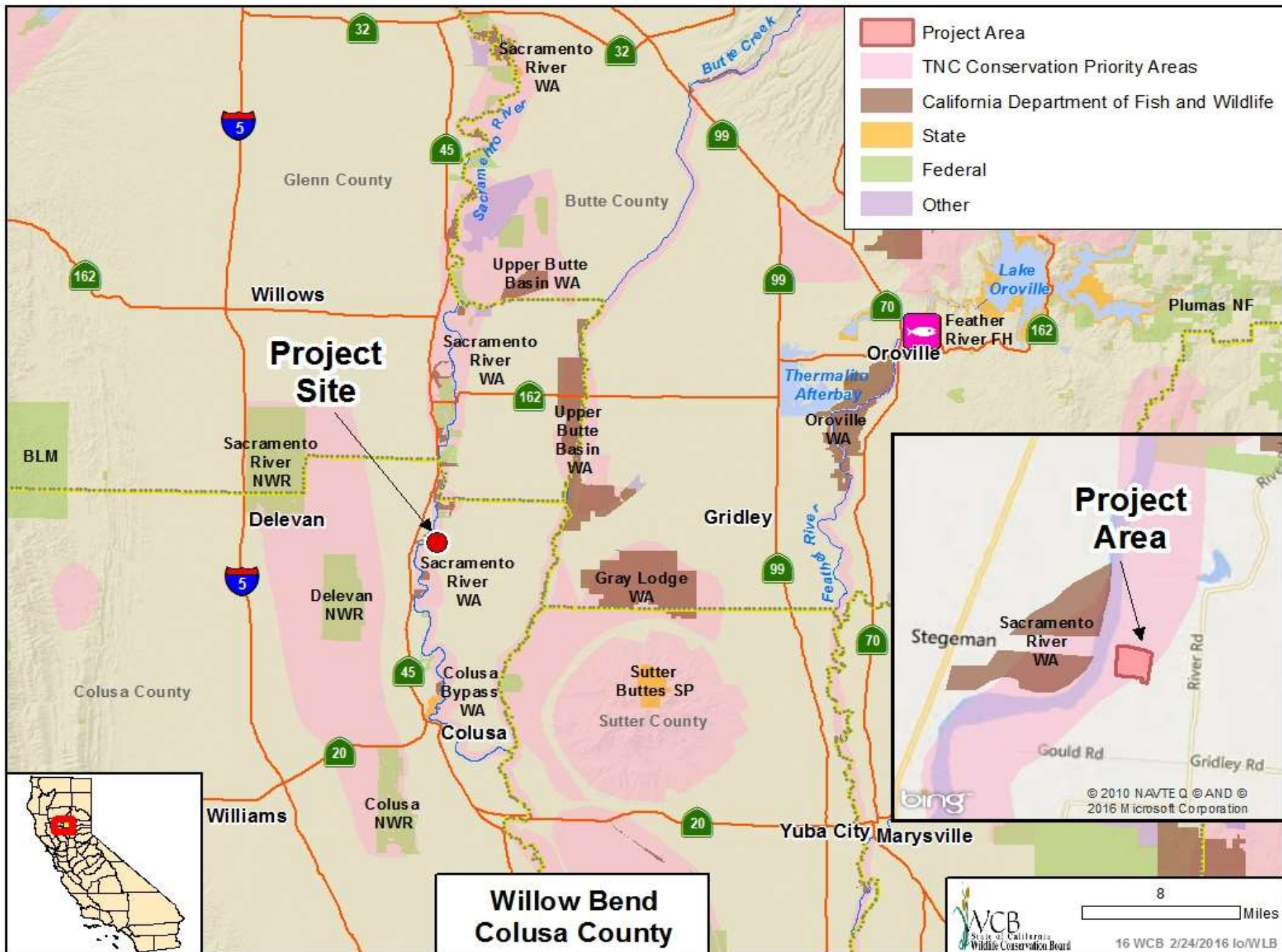


Old Oak tree on property

#15. Eel River Preserve, Phase II (Foster Mountain), (Garcia Creek), (Summer Camp)



Larger view of Oak tree



#16. Willow Bend



Looking west across the Sacramento River

#16. Willow Bend



Willow Bend property in late January 2016

#16. Willow Bend



Large elderberry stem, approximately 5" diameter

#16. Willow Bend

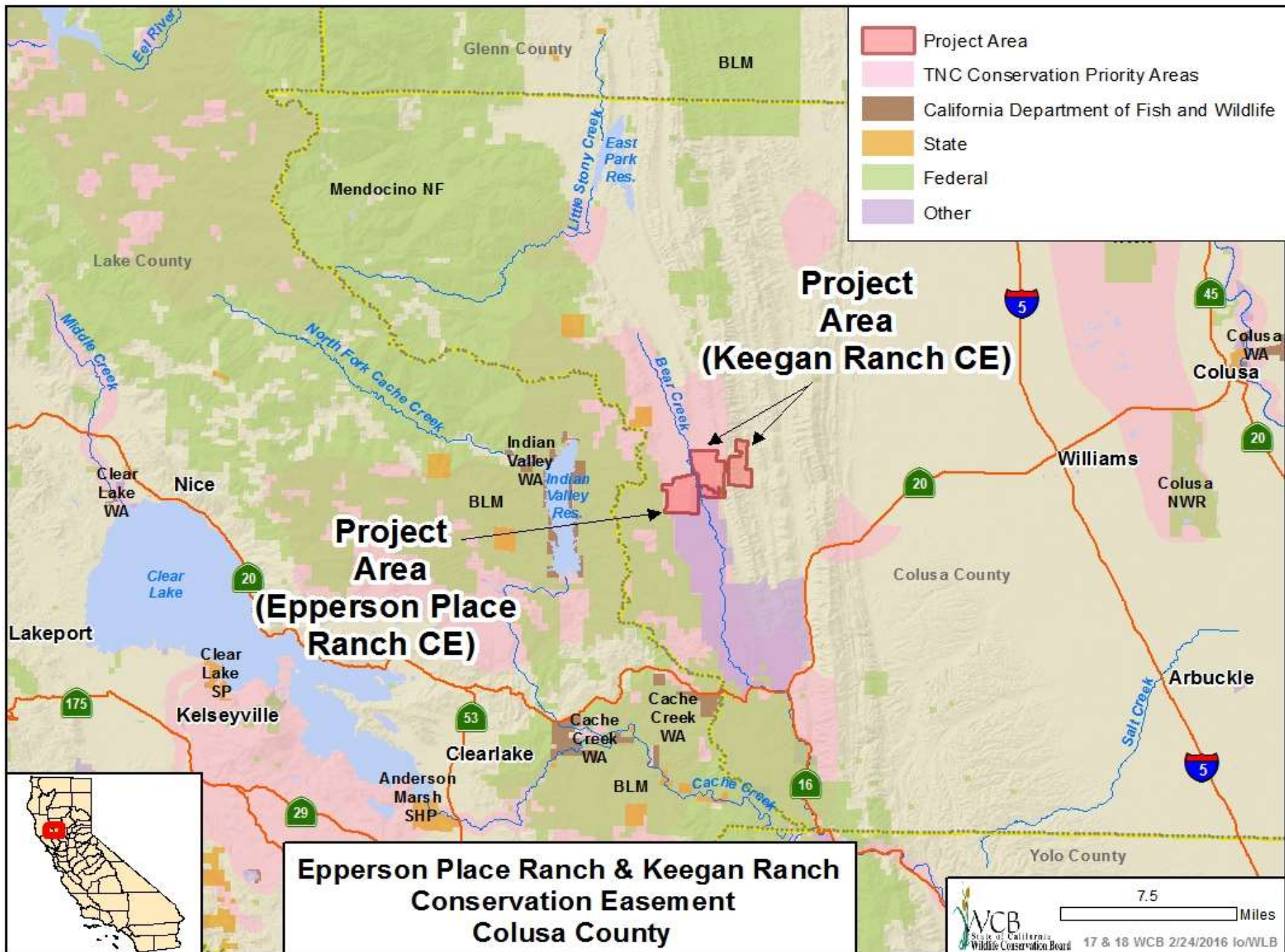


Walnut
Orchard

#16. Willow Bend



Grassy area adjacent to the walnut orchard



#17 & 18. Epperson Place and Keegan Ranch Conservation Easements



Looking north on Bear Valley Road
towards Keegan Ranch

#17. Epperson Place and Keegan & Ranch Conservation 18. Easements



Looking southwest on Bear Valley Road
towards Epperson Place Ranch

#17 & 18. Epperson Place and Keegan Ranch Conservation Easements



Bear Creek, Epperson Place Ranch

#17 & 18. Epperson Place and Keegan Ranch Conservation Easements



Looking east on Bear Valley Road towards Keegan Ranch

#17 & 18. Epperson Place and Keegan Ranch Conservation Easements



Looking west from the interior of Epperson Place Ranch

#17 & 18. Epperson Place and Keegan Ranch Conservation Easements



Looking west from the interior of Epperson Place Ranch

#17 & 18. Epperson Place and Keegan Ranch Conservation Easements

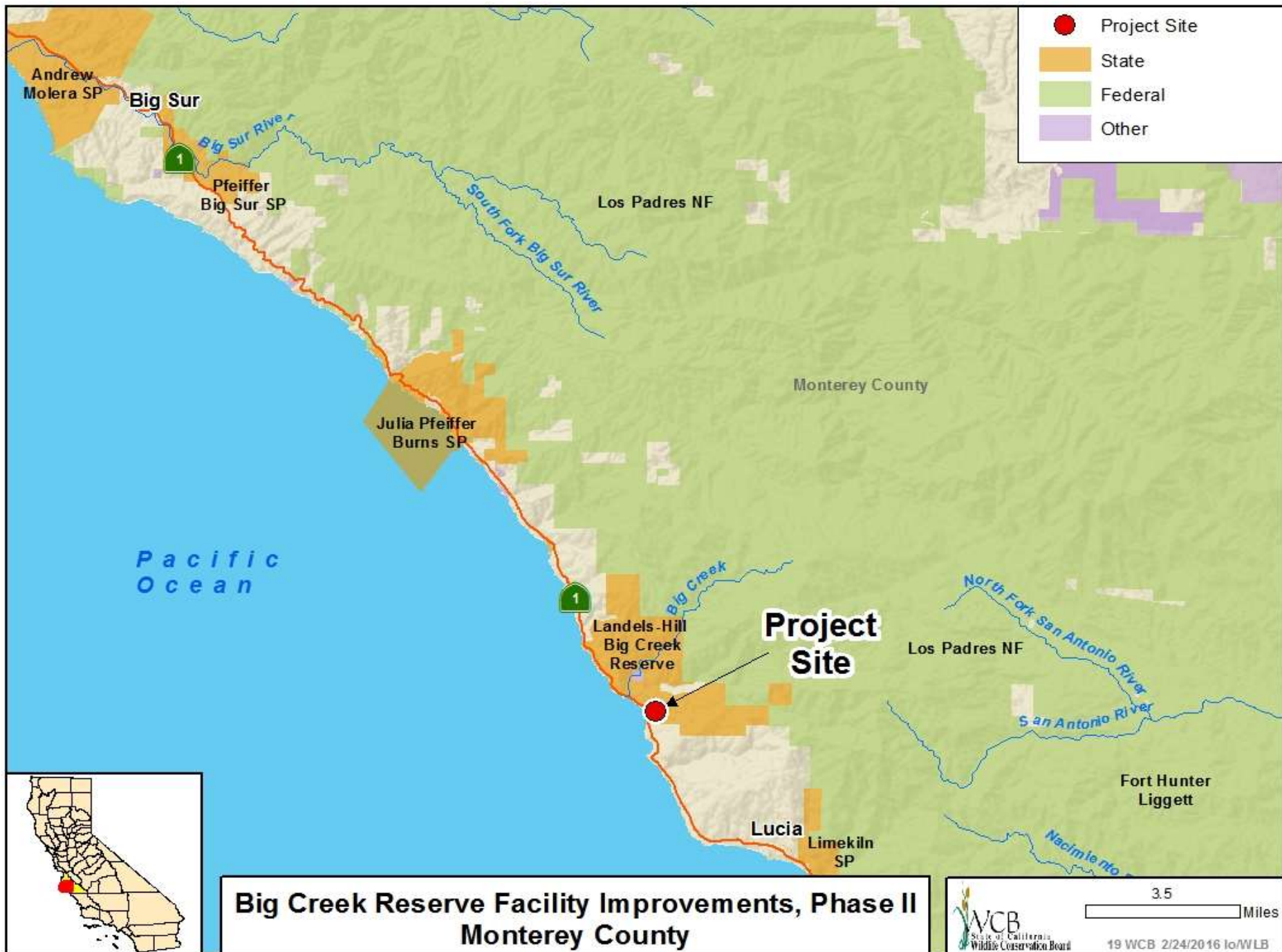


Wildflower tours are set up on the Keegan Ranch for public use

#17 & 18. Epperson Place and Keegan Ranch Conservation Easements



Wildflowers in bloom and grazing on
Keegan Ranch



#19. Big Creek Reserve Facility Improvements, Phase II



Coyote Creek site and view of Big Sur Coast

#19. Big Creek Reserve Facility Improvements, Phase II

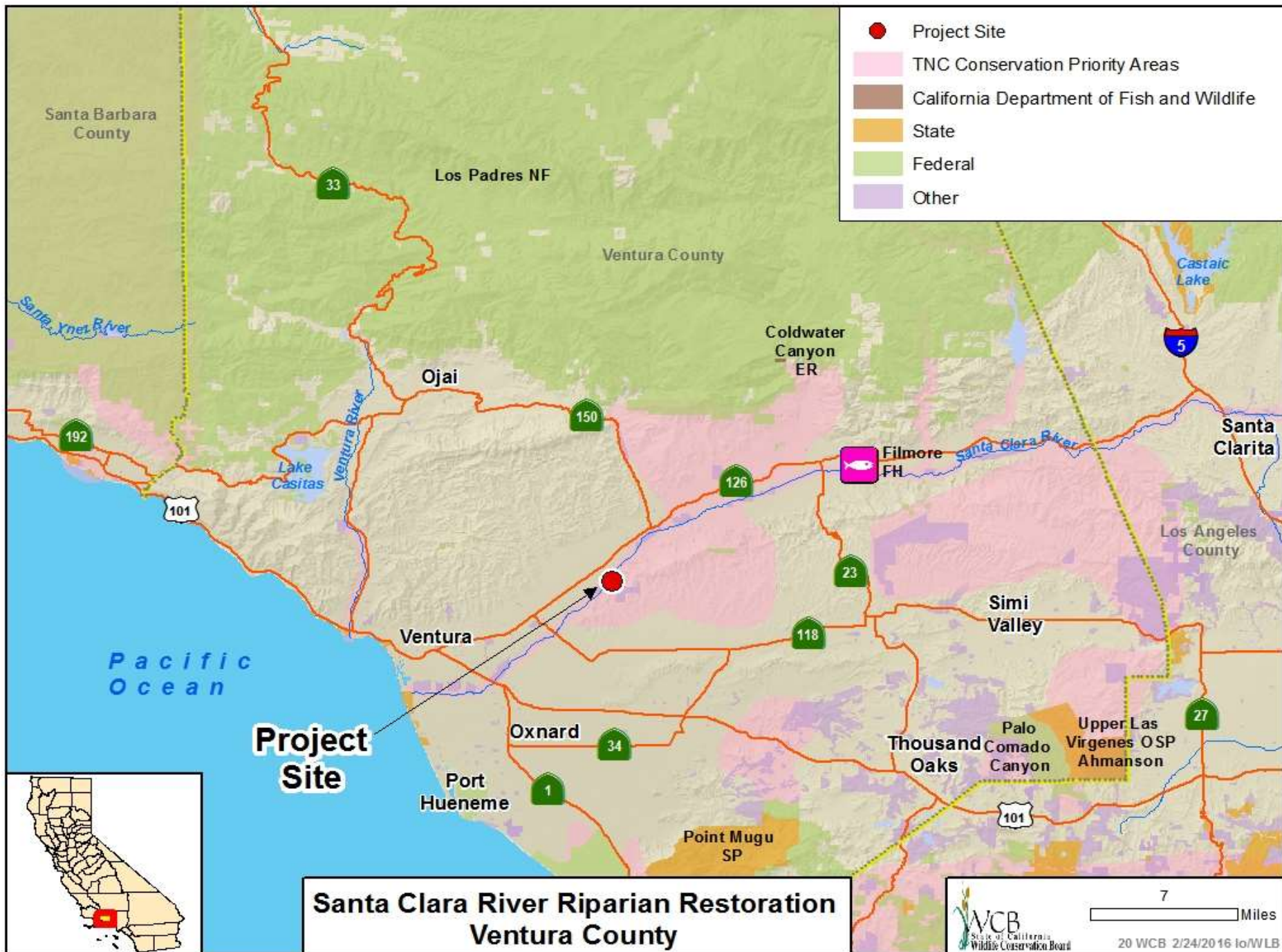


Entrance Area Site

#19. Big Creek Reserve Facility Improvements, Phase II



Coyote Creek site of new construction

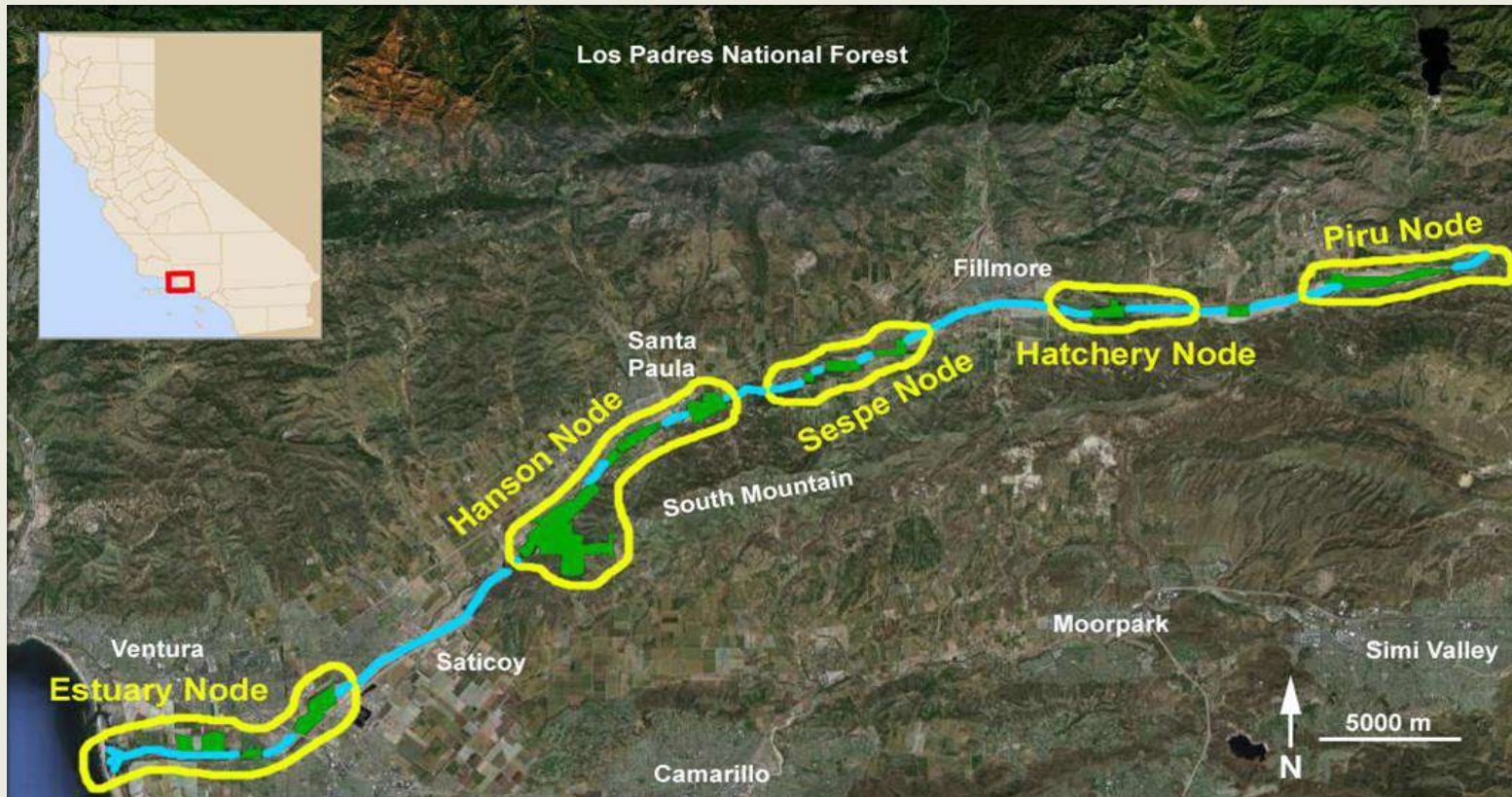


#20. Santa Clara River Riparian Restoration



Looking east along the Santa Clara River

#20. Santa Clara River Riparian Restoration



The Nature Conservancy focused our conservation efforts within five pre-selected, high-value “conservation Nodes” along the Santa Clara River

#20. Santa Clara River Riparian Restoration



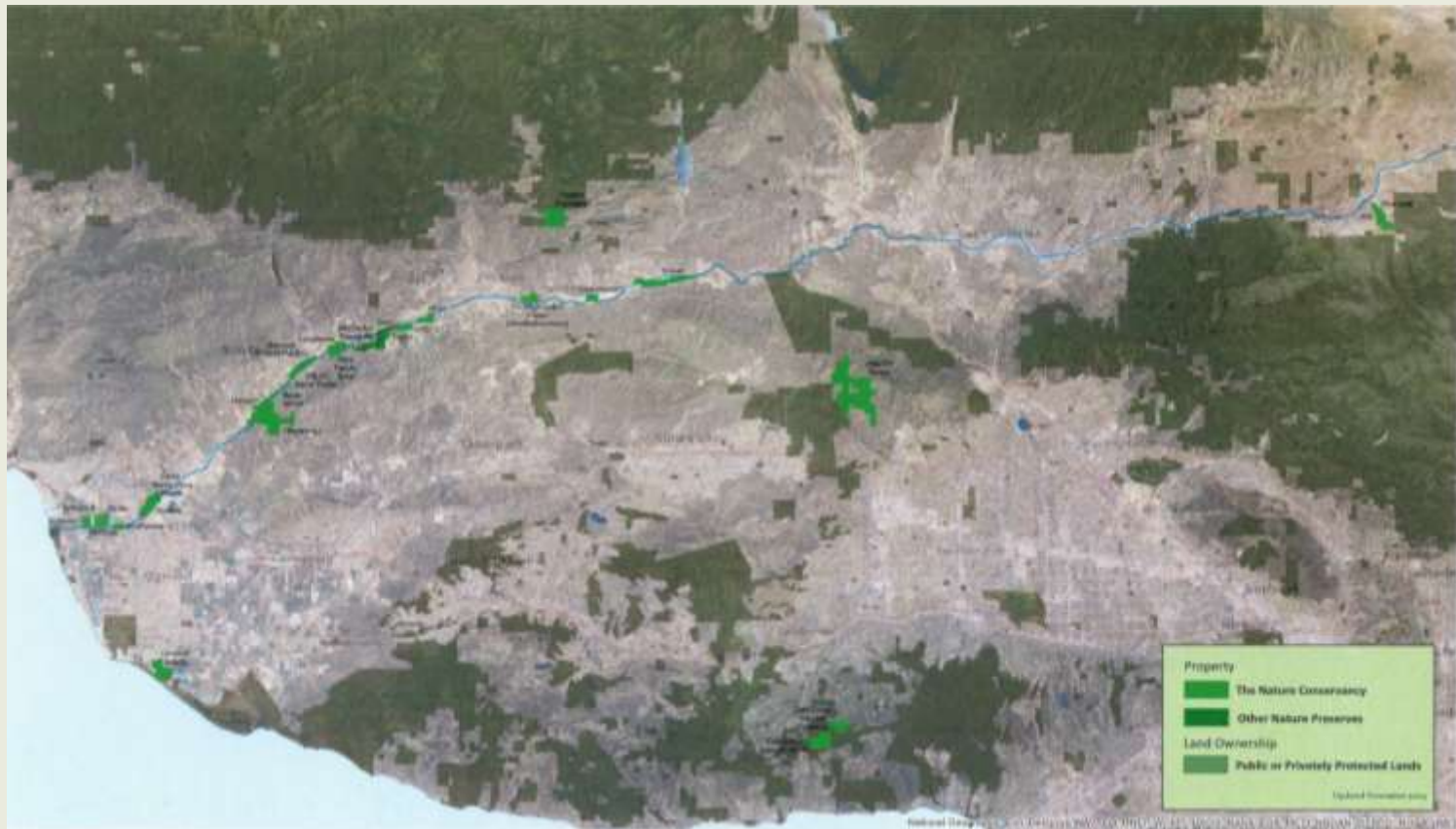
Pink Polygons represent Arundo in 2005 with 20-100% cover

#20. Santa Clara River Riparian Restoration



 Giant Reed Cover  VRSD Mitigation (1.6 ac)  Riparian Project Boundary

#20. Santa Clara River Riparian Restoration



Protected lands along the Santa Clara River

#20. Santa Clara River Riparian Restoration

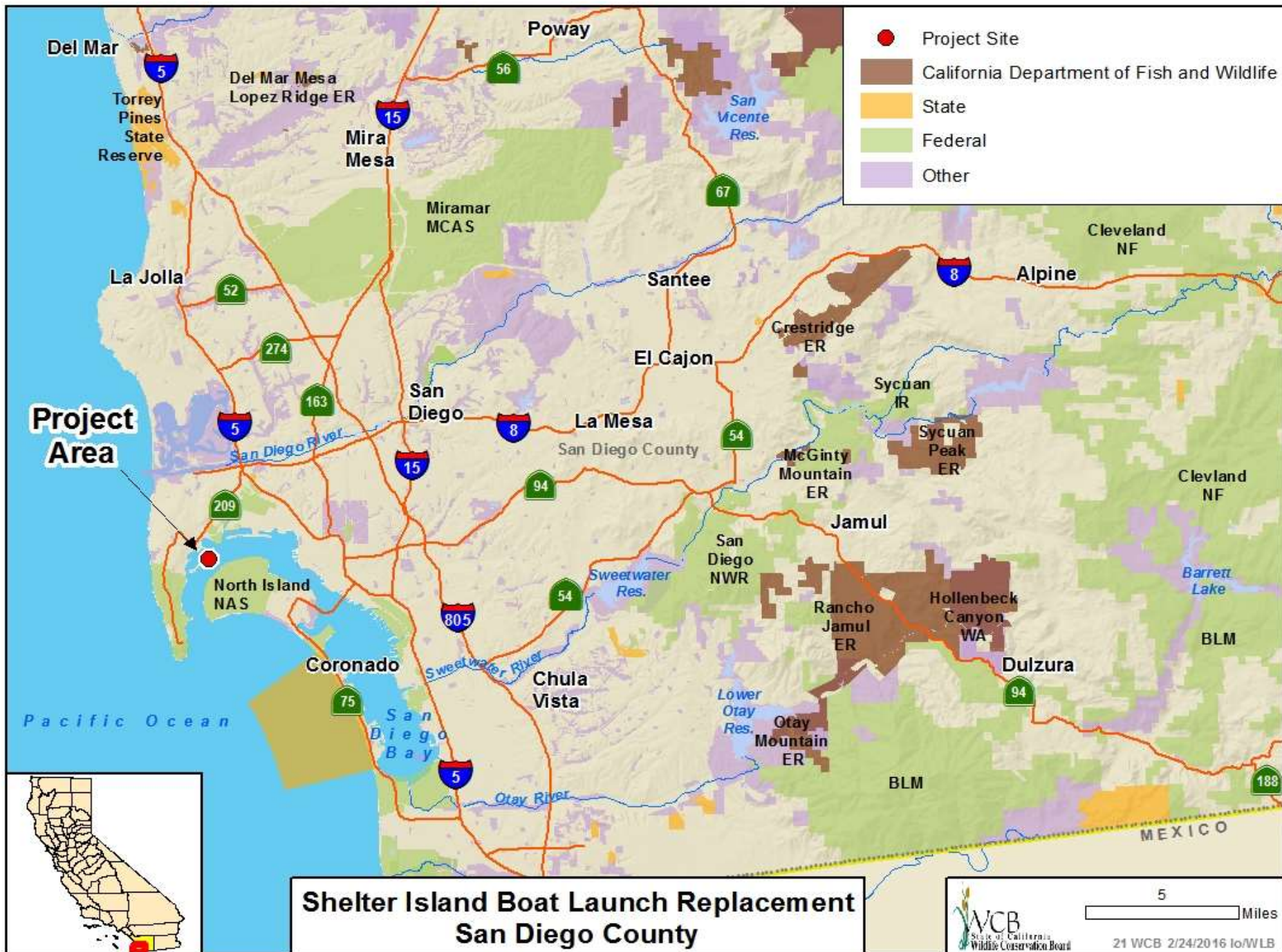


25-acre site along the Santa Clara River,
Arundo was recently removed

#20. Santa Clara River Riparian Restoration



Dense mature
Arundo on the
proposed project
site



#21. Shelter Island Boat Launch Replacement



Photo courtesy of San Diego Unified Port District

The original Shelter Island Boat Launch prior to expansion to 10-lanes, constructed in the 1950's, does not meet current ADA requirements.

#21. Shelter Island Boat Launch Replacement



The 10-lane concrete launching ramp is in need of replacement due to the corrosive and wearing actions of seawater and heavy use of boaters.

#21. Shelter Island Boat Launch Replacement



Existing west dock and east dock, gangways and abutments to be replaced. East dock will have 80-foot accessible gangway to accommodate users with disabilities.

#21. Shelter Island Boat Launch Replacement



Existing rock jetties, pictured facing east, will be replaced with concrete sheet pile(bulkhead) walls with ADA accessible walking platforms

#21. Shelter Island Boat Launch Replacement



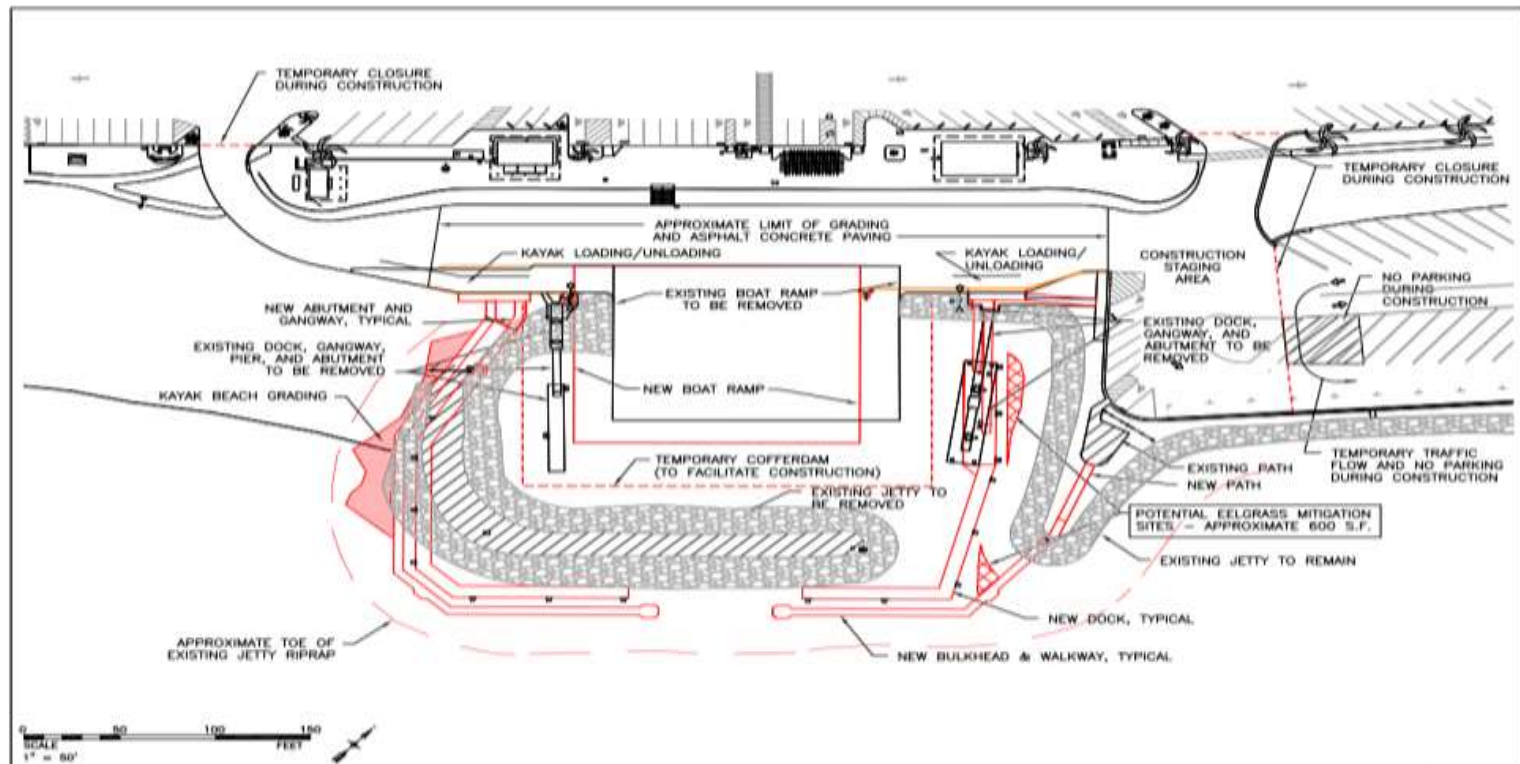
Existing rock jetties and opening to and from the San Diego Bay viewed facing west (top two) and facing east (bottom). Replacement of existing rock jetties with concrete sheet pile bulkhead will create a center 60-foot wide opening.

#21. Shelter Island Boat Launch Replacement



The existing launch, the west dock and gangway (left) and the east dock and gangway (right).

#21. Shelter Island Boat Launch Replacement



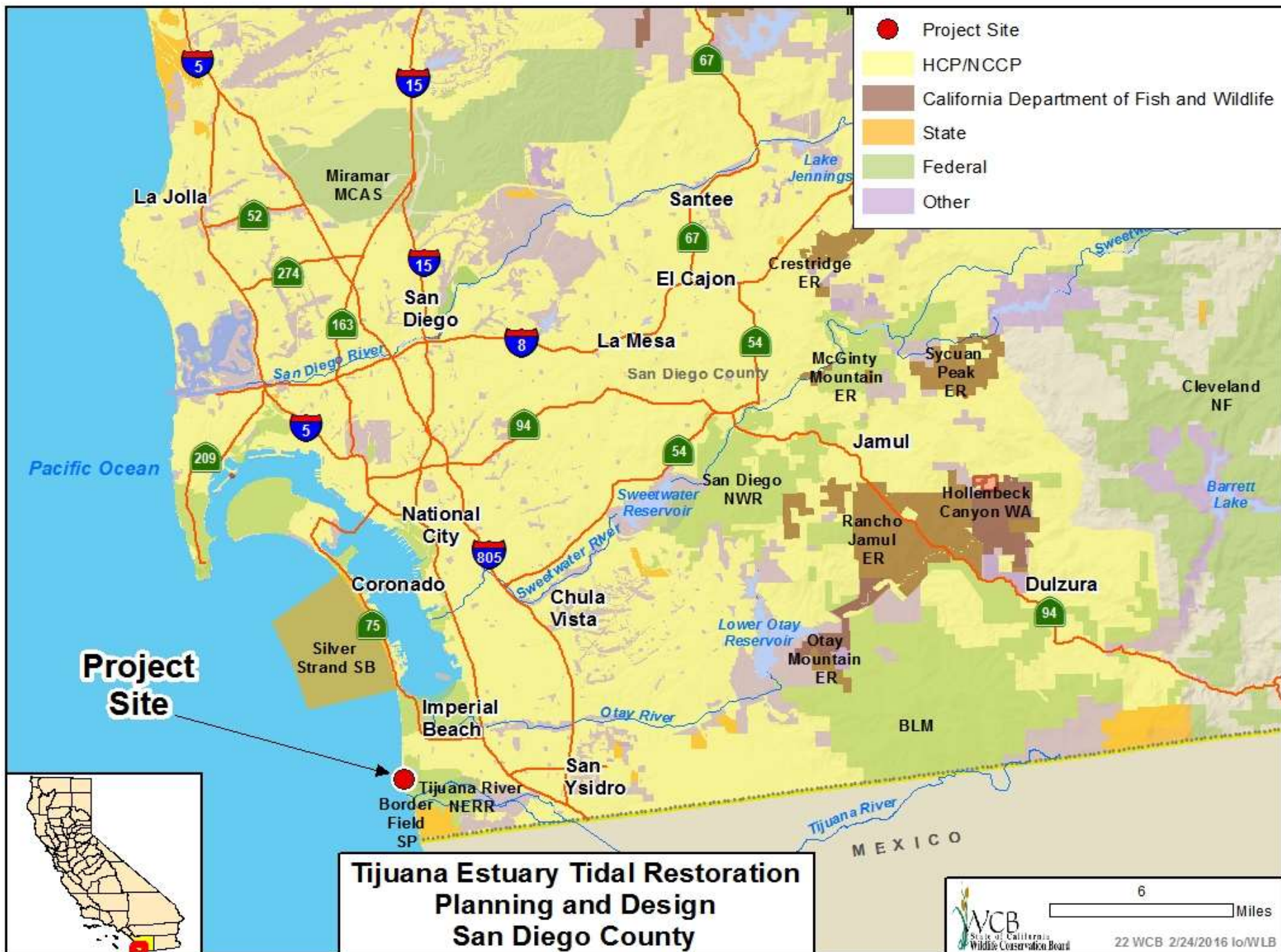
Map Date: 5/28/2015
Map Source: TransSystems 2015

Location: H:\017\2012-143 Shelter Island Boat Launch\HAPS\Site_Visrity\Site_Improvements.mxd (A:\garcia, 5/18/2013) - square

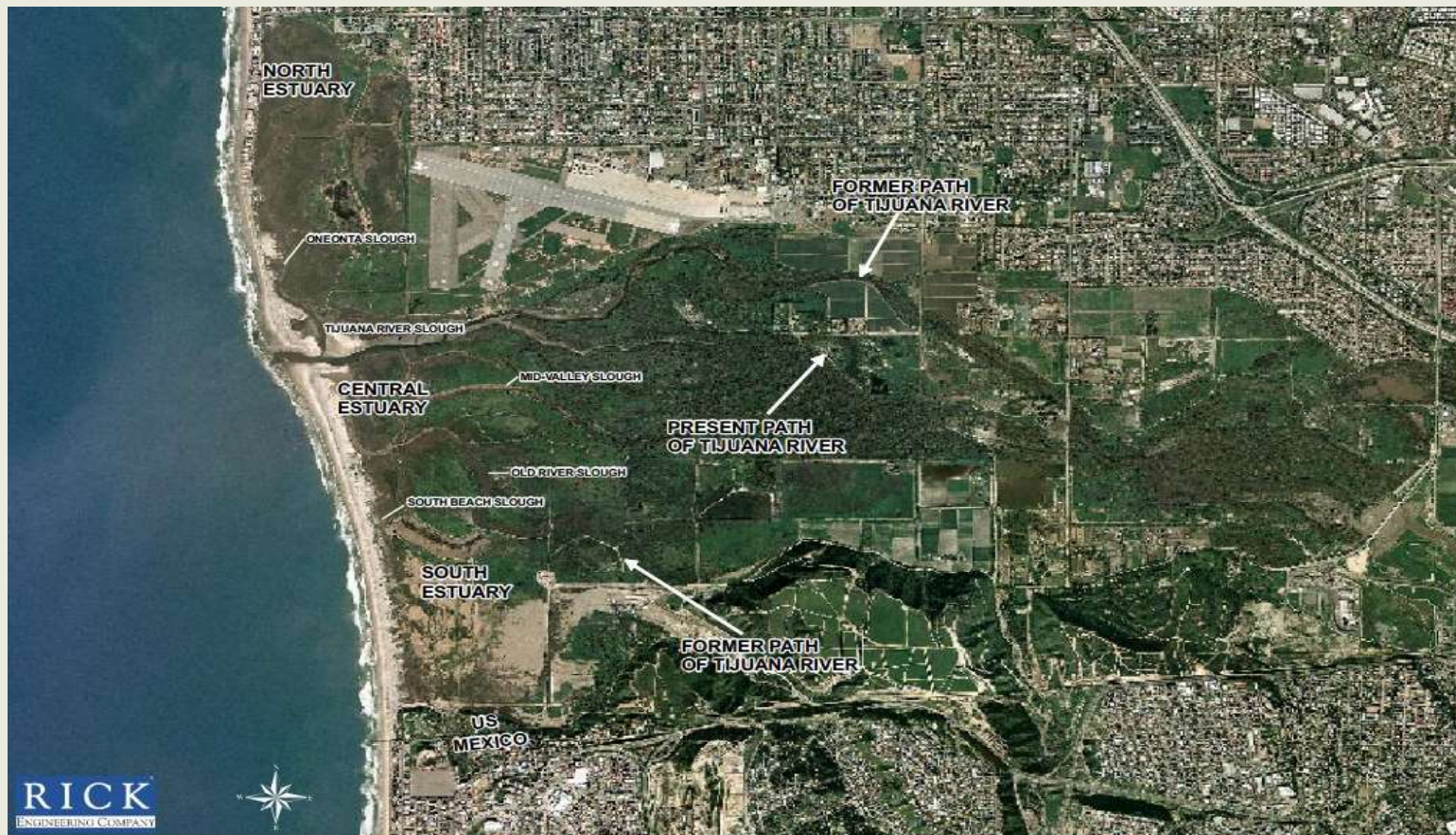
Figure 3 Proposed Site Improvements
2012-143 Shelter Island Boat Launch



Proposed site improvements



#22. Tijuana Estuary Tidal Restoration Planning and Design



Aerial Overview of Tijuana Estuary

#22. Tijuana Estuary Tidal Restoration Planning and Design



Map of proposed project area

#22. Tijuana Estuary Tidal Restoration Planning and Design



Aerial view of
proposed project
area

#22. Tijuana Estuary Tidal Restoration Planning and Design



Model Marsh – Tijuana Estuary

#22. Tijuana Estuary Tidal Restoration Planning and Design



Project area immediately south of the model marsh

#22. Tijuana Estuary Tidal Restoration Planning and Design



Overview of project with sediment ponds funded by WCB in 2003

#22. Tijuana Estuary Tidal Restoration Planning and Design



Beach and dunes looking north from the US-Mexico Border