

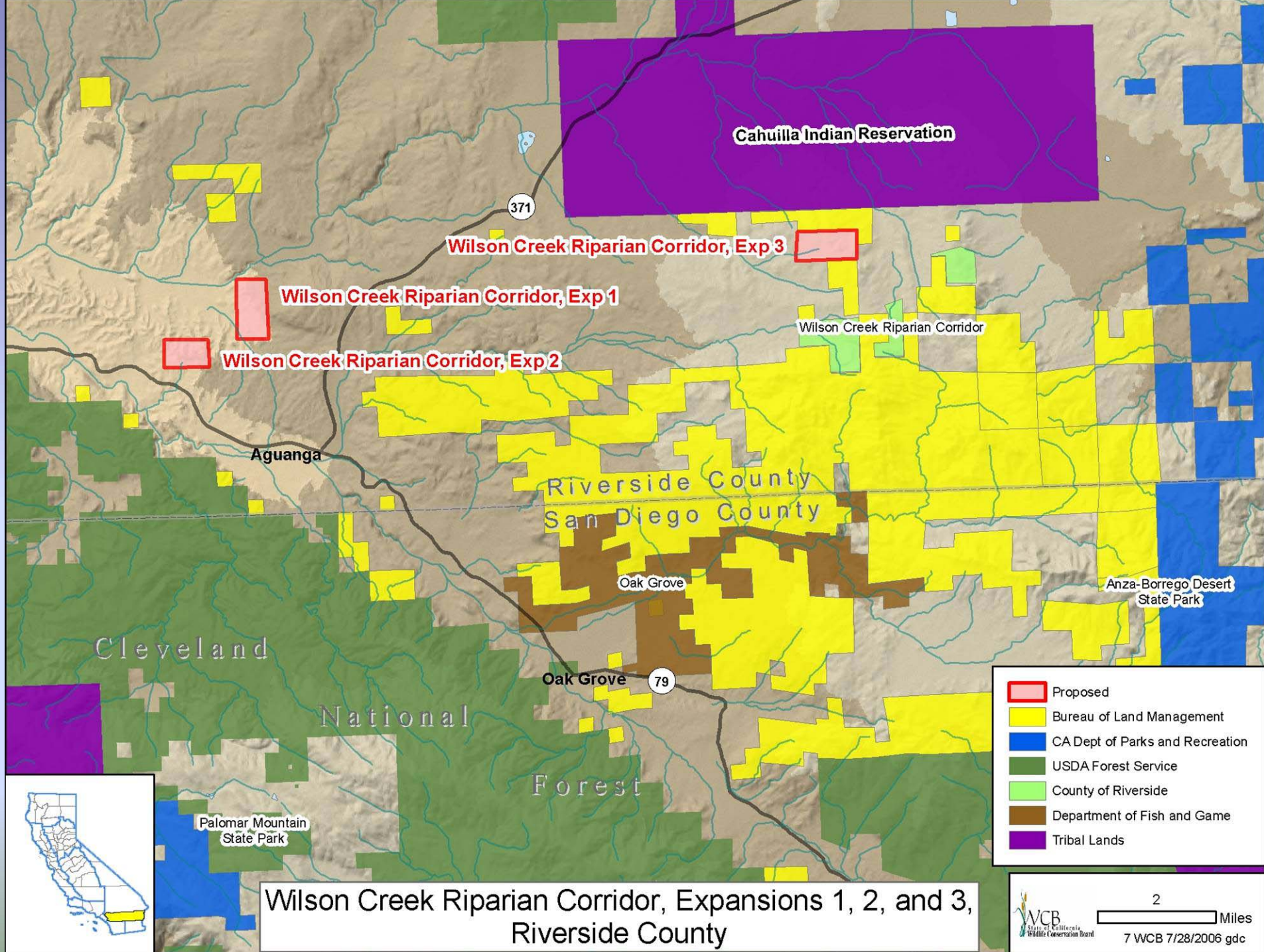
Tule Basin Farms, Sutter County  
Sutter Buttes in background

August 17, 2006 WCB Board Meeting  
State Capitol, Room 113  
Sacramento, California 95814



*WCB Staff Photo*





Wilson Creek Riparian Corridor, Expansions 1, 2, and 3, Riverside County

## 07 Wilson Creek Riparian Corridor, Expansions 1, 2, and 3, Riverside County



View from subject looking west towards Temecula



## 07 Wilson Creek Riparian Corridor, Expansions 1, 2, and 3, Riverside County



View from subject property looking northeast towards the town of Anza



## 07 Wilson Creek Riparian Corridor, Expansions 1, 2, and 3, Riverside County



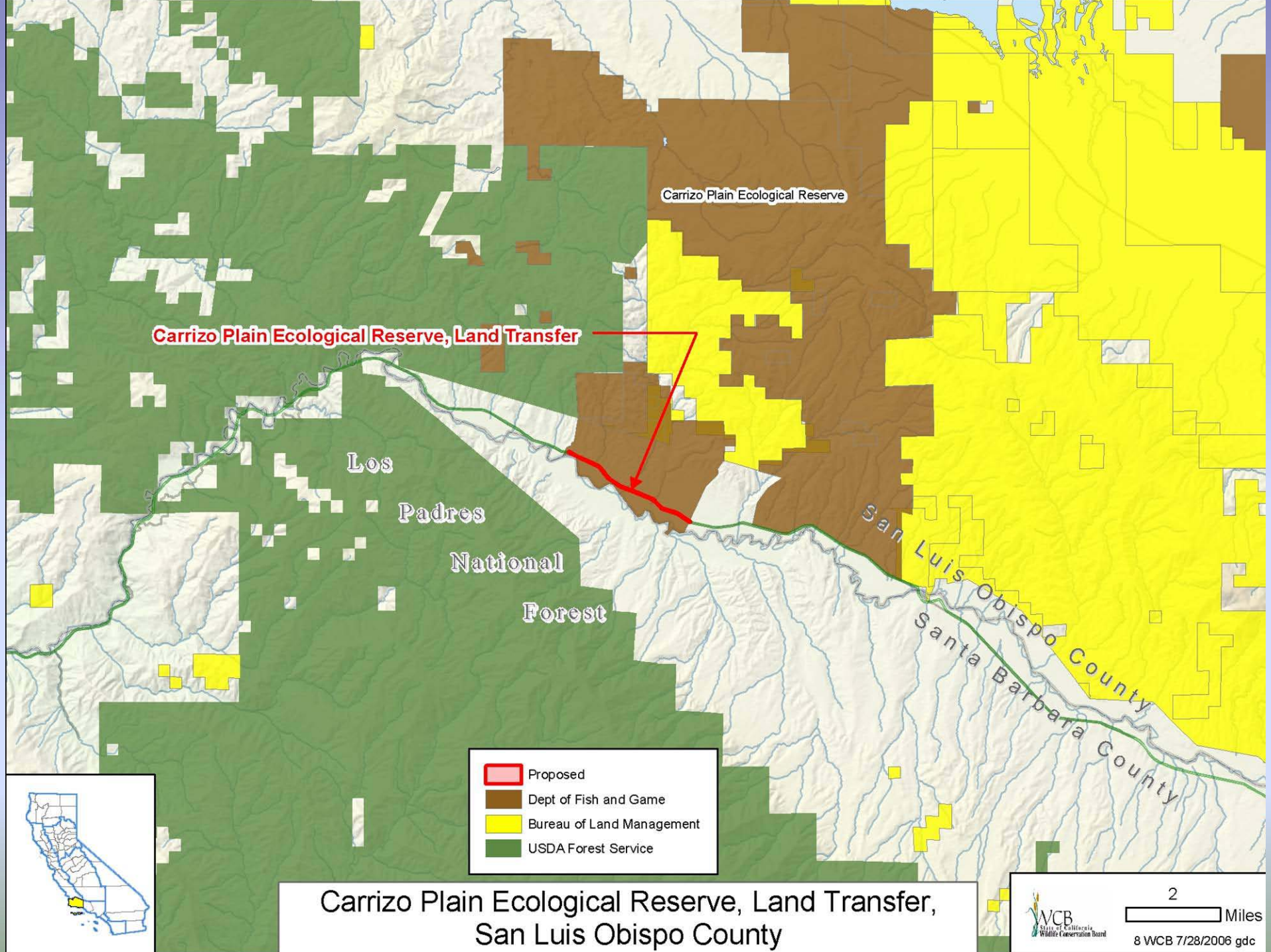
Typical habitat view looking west from east side of parcel

## 07 Wilson Creek Riparian Corridor, Expansions 1, 2, and 3, Riverside County



Typical habitat view looking north from south side of parcel







## 08 Carrizo Plain Ecological Reserve, Land Transfer, San Luis Obispo County





## 08 Carrizo Plain Ecological Reserve, Land Transfer, San Luis Obispo County

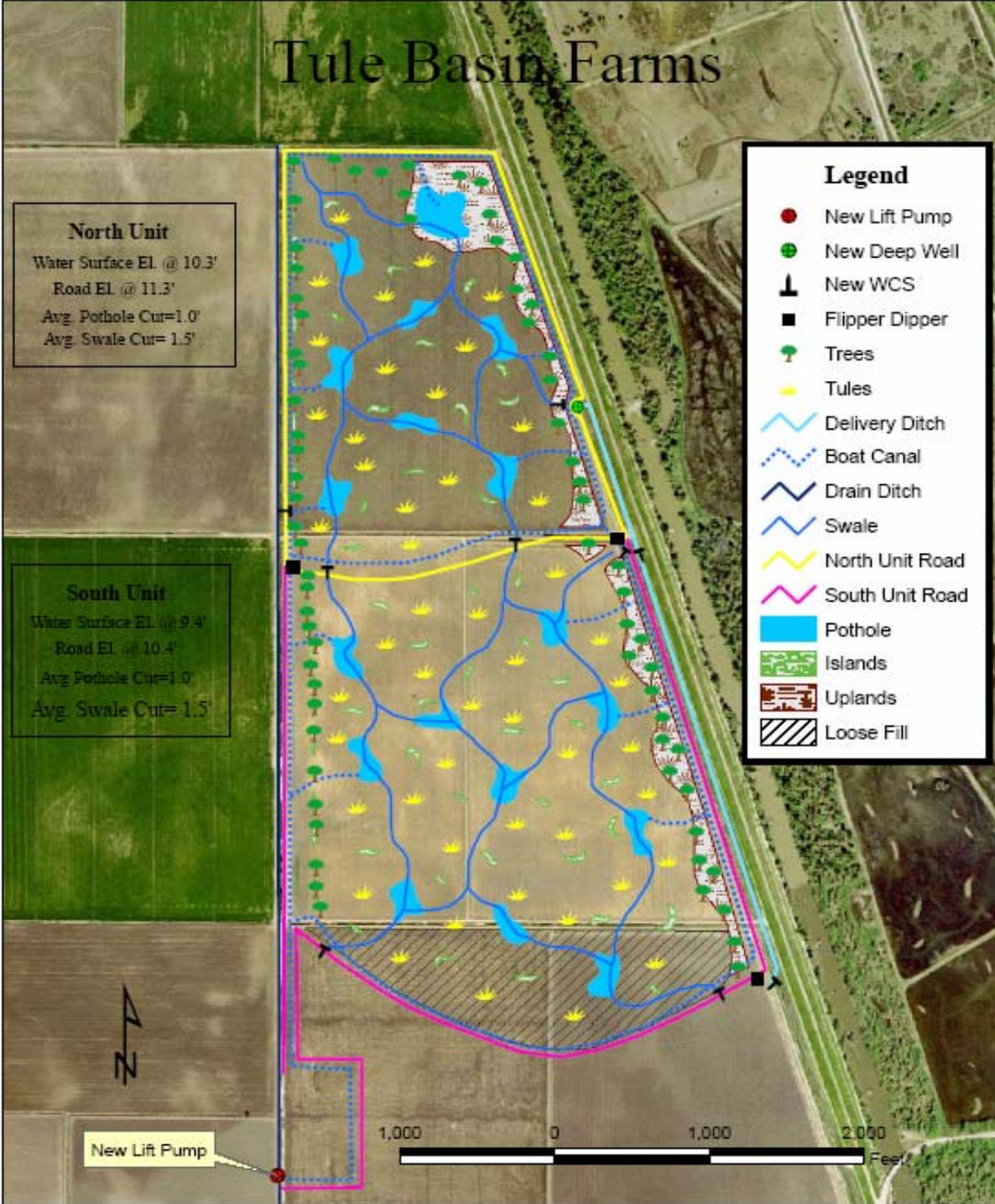








# Tule Basin Farms



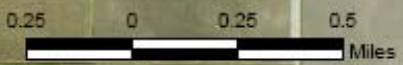


# Tule Basin Farms



Project Boundary

Sutter National Wildlife Refuge





## 09 Tule Basin Farms Wetland Restoration, Sutter County



Soils and water quality are not the best, crops such as safflower have been grown in the past (this photo was taken several years ago), but the land has been idle in recent years.



## 09 Tule Basin Farms Wetland Restoration, Sutter County



Sutter National Wildlife Refuge is immediately east of the property.



## 09 Tule Basin Farms Wetland Restoration, Sutter County



Crop production has been patchy at best, notice poor germination on left, soggy, side of field.

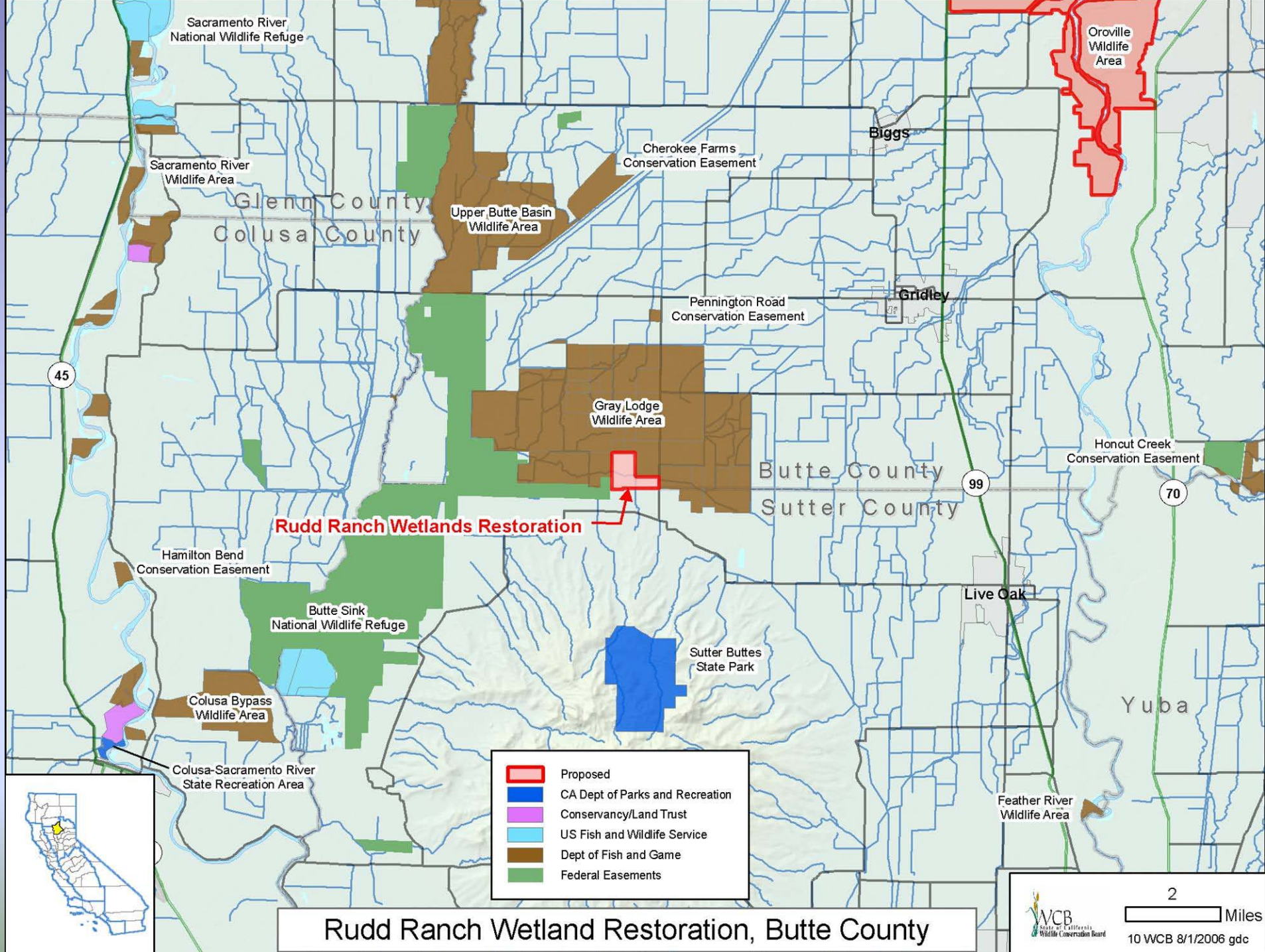


## 09 Tule Basin Farms Wetland Restoration, Sutter County



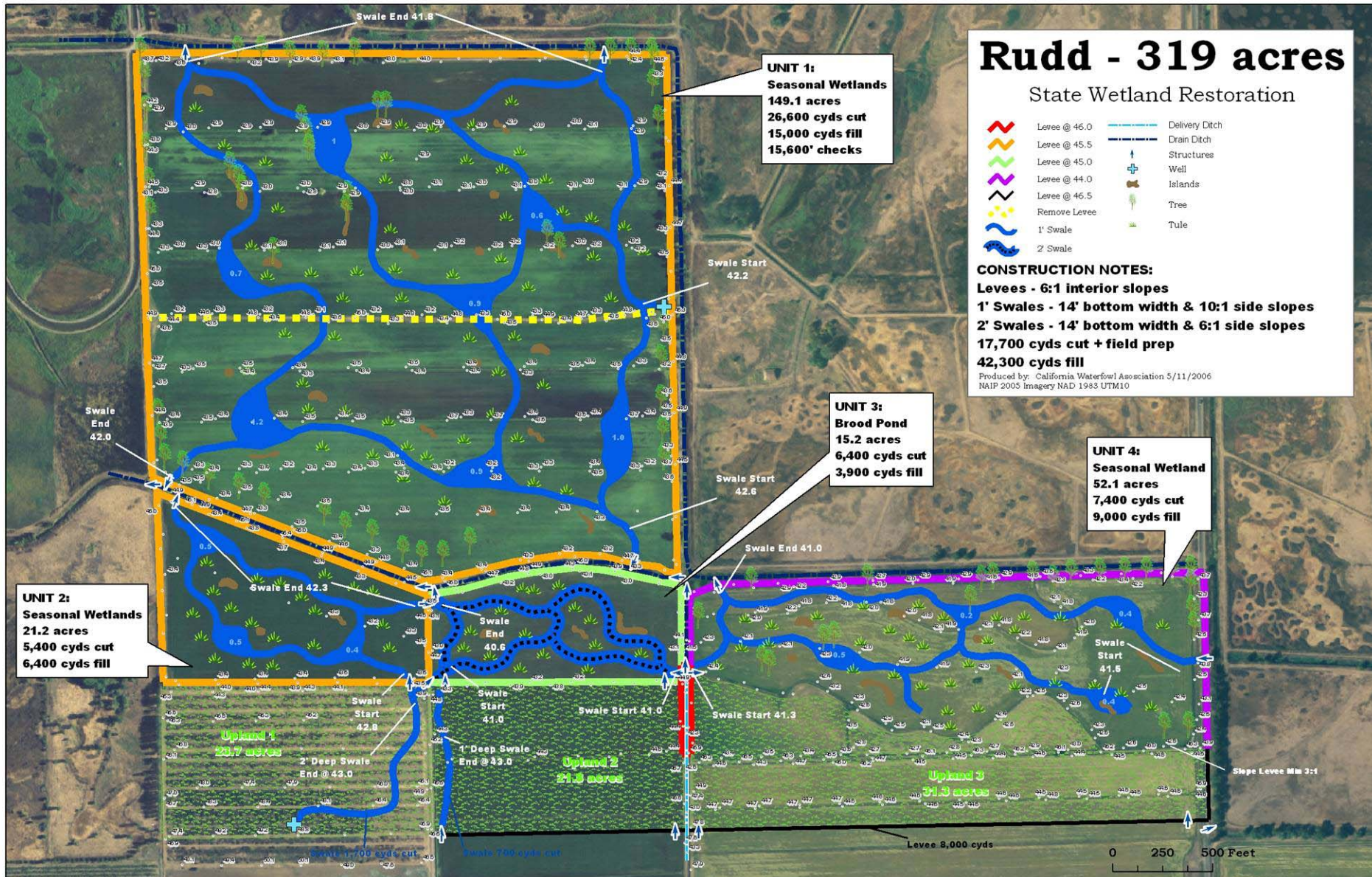
Habitat values in the Sutter NWR will be duplicated at the new site in a few years.







# 10 Rudd Ranch Wetland Restoration, Butte County





## 10 Rudd Ranch Wetland Restoration, Butte County



The north end of the property, with Gray Lodge WA on the right and in the distance.



## 10 Rudd Ranch Wetland Restoration, Butte County



Existing wells will be used to supply water to the new wetlands.



## 10 Rudd Ranch Wetland Restoration, Butte County



Supply canal through the center of property will be used to provide water to all the wetlands.

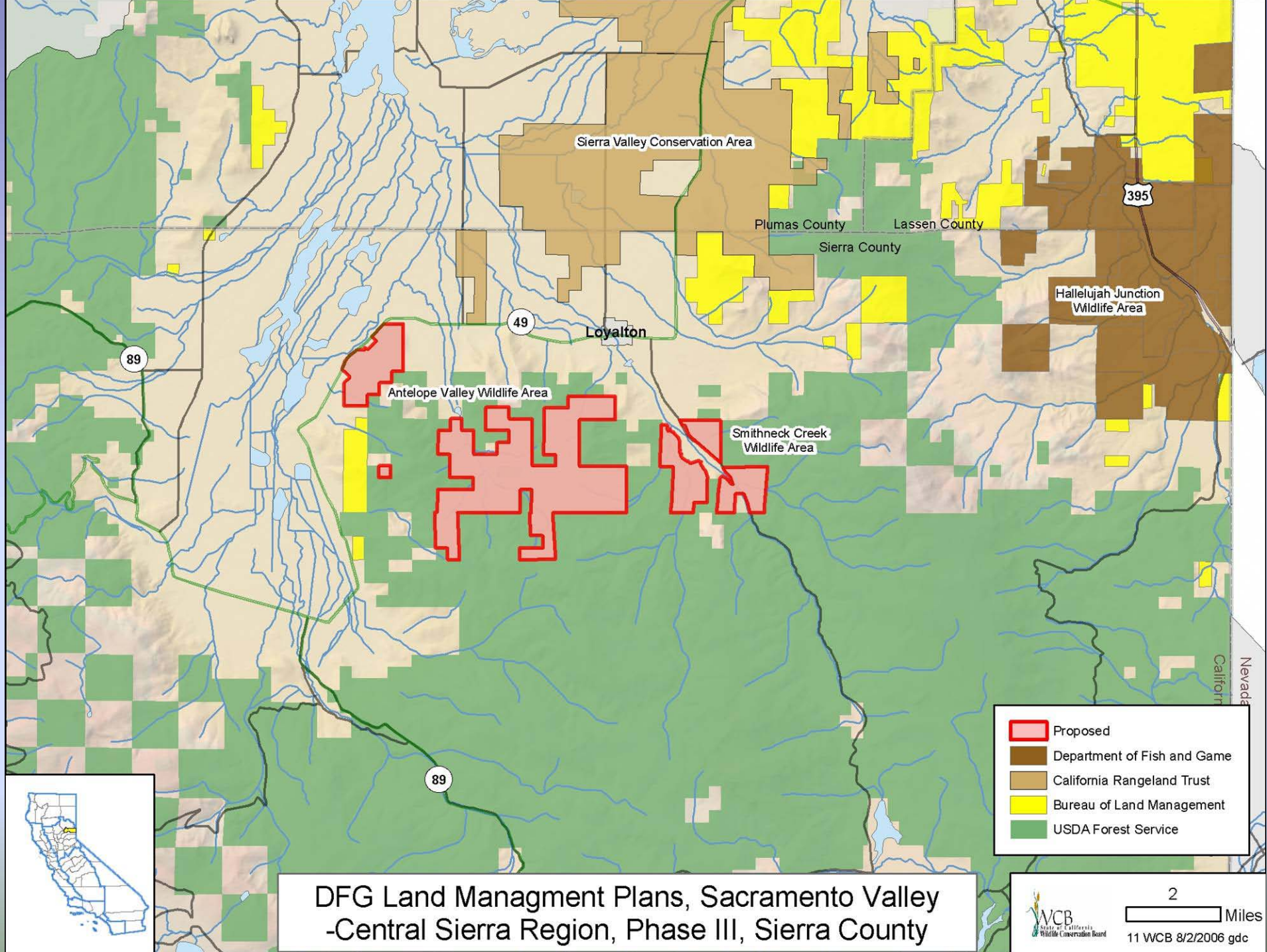


## 10 Rudd Ranch Wetland Restoration, Butte County



Proposed wetland should provide these kinds of wildlife benefits within two years.







# 11 DFG Land Management Plans, Sacramento Valley – Central Sierra Region, Phase III, Sierra County



Looking north from Antelope Valley Wildlife Area towards Sierra Valley.



# 11 DFG Land Management Plans, Sacramento Valley – Central Sierra Region, Phase III, Sierra County



Old skid trail that was exposed by wildfire last fall. There are many of these within the Antelope Valley Wildlife Area.



11 DFG Land Management Plans, Sacramento Valley – Central Sierra Region,  
Phase III, Sierra County



View looking southwest across Smithneck Creek Wildlife Area.

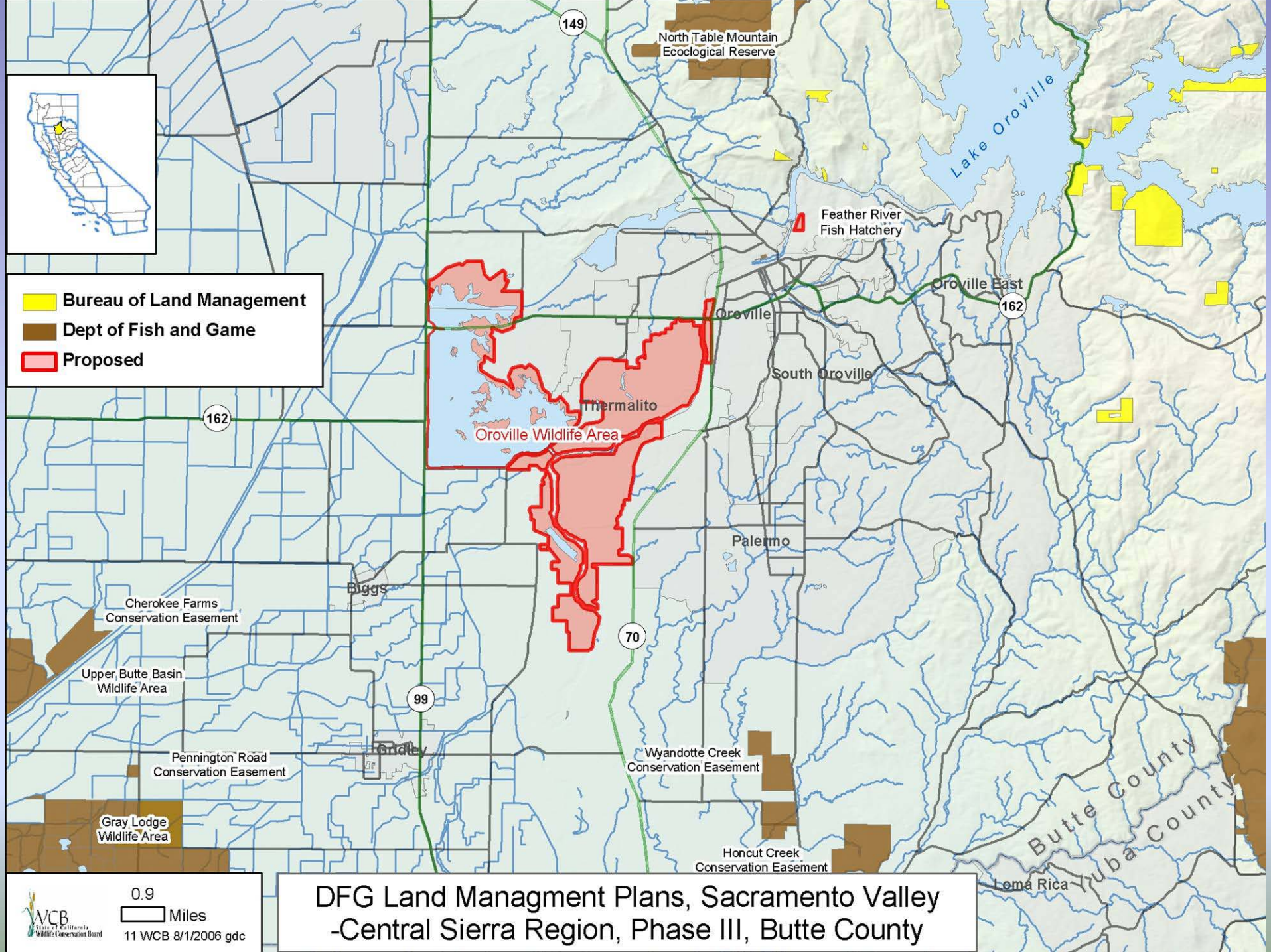


11 DFG Land Management Plans, Sacramento Valley – Central Sierra Region,  
Phase III, Sierra County



Six foot deep headcut into Bear Valley Creek wet meadow on wildlife area.







# 11 DFG Land Management Plans, Sacramento Valley – Central Sierra Region, Phase III, Butte County



Fishing at Oroville Wildlife Area Spillway

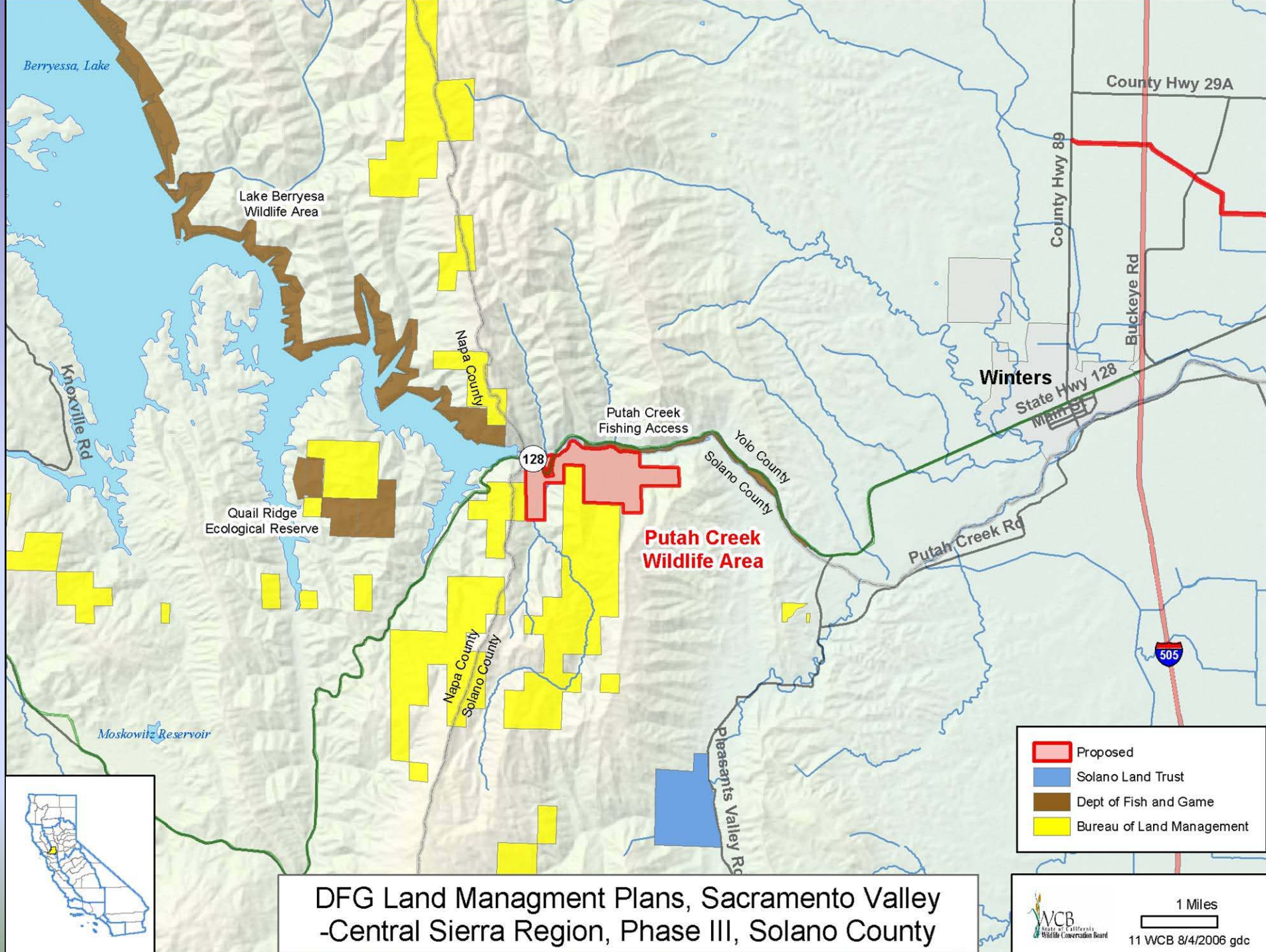


11 DFG Land Management Plans, Sacramento Valley – Central Sierra Region,  
Phase III, Butte County



Pelicans at Oroville Wildlife Area riparian area.







# 11 DFG Land Management Plans, Sacramento Valley - Central Sierra Region, Phase III, Solano County



Looking south across Putah Creek at wildlife area property.



# 11 DFG Land Management Plans, Sacramento Valley – Central Sierra Region, Phase III, Solano County



Looking southeast from Cold Canyon Trail within Putah Creek Wildlife Area.









Tolowa Dunes  
State Park

Tolowa Dunes  
State Park

Lake Earl  
Wildlife Area

Lake Earl Wildlife Area, Expansion 35

Jedediah Smith  
Redwoods  
State Park

- proposed
- CA Dept of Parks and Recreation
- Dept of Fish and Game

# Lake Earl Wildlife Area, Expansion 35, Del Norte County



## 13 Lake Earl Wildlife Area, Expansion 35, Del Norte County



Looking northward. Property fronts on Lakeside Loop

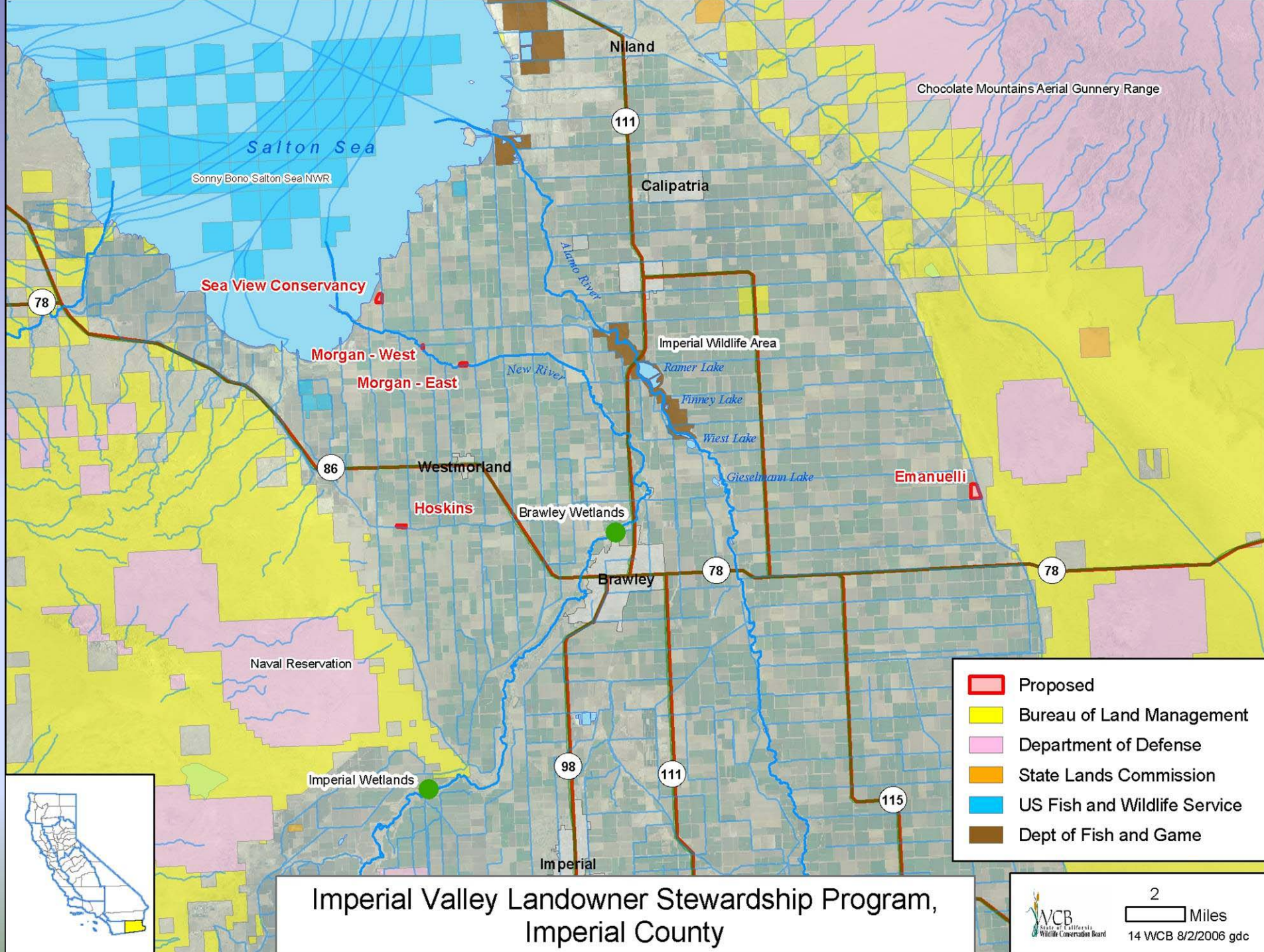


## 13 Lake Earl Wildlife Area, Expansion 35, Del Norte County



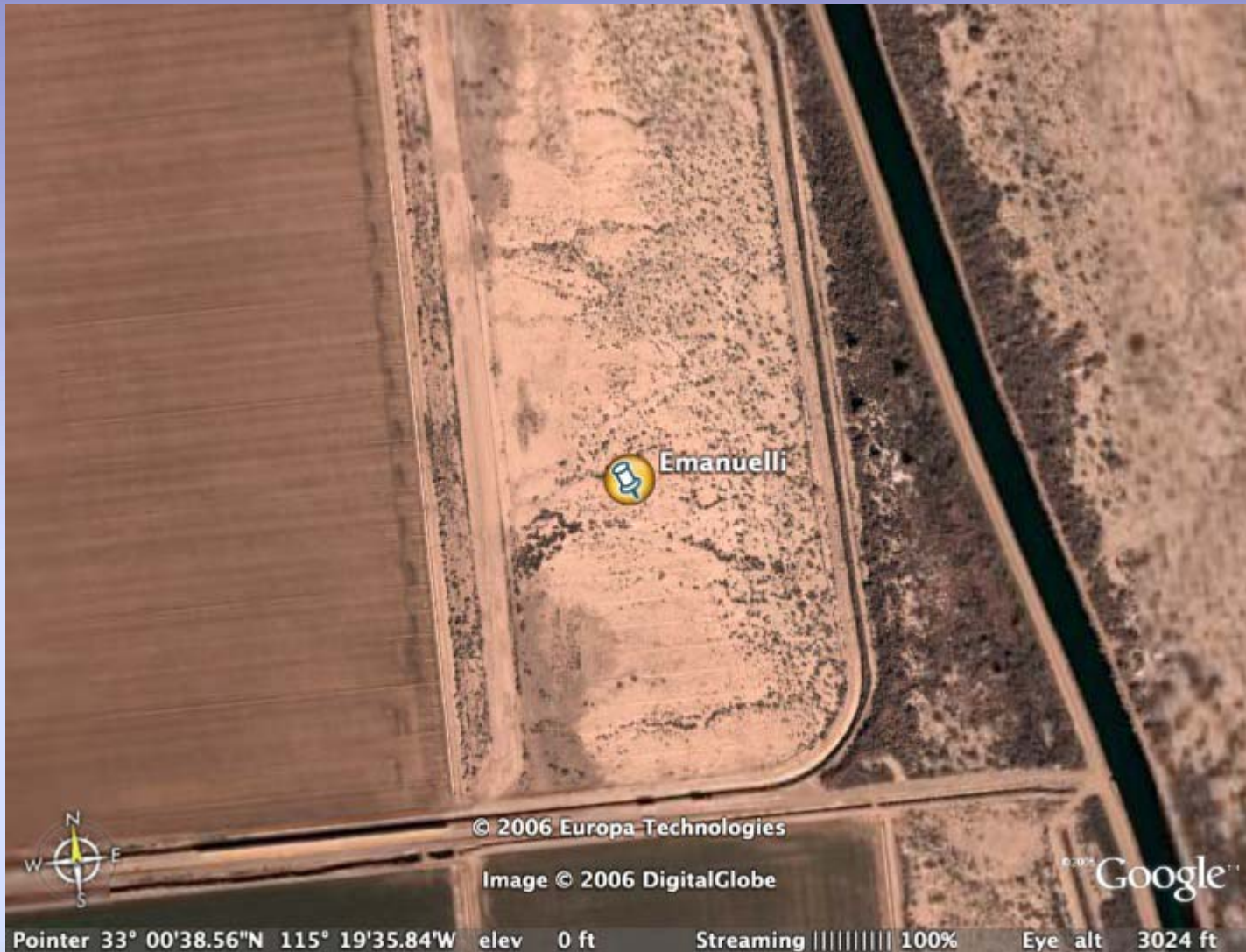
Interior Vegetation







# 14 Imperial Valley Landowner Stewardship Program, Imperial County



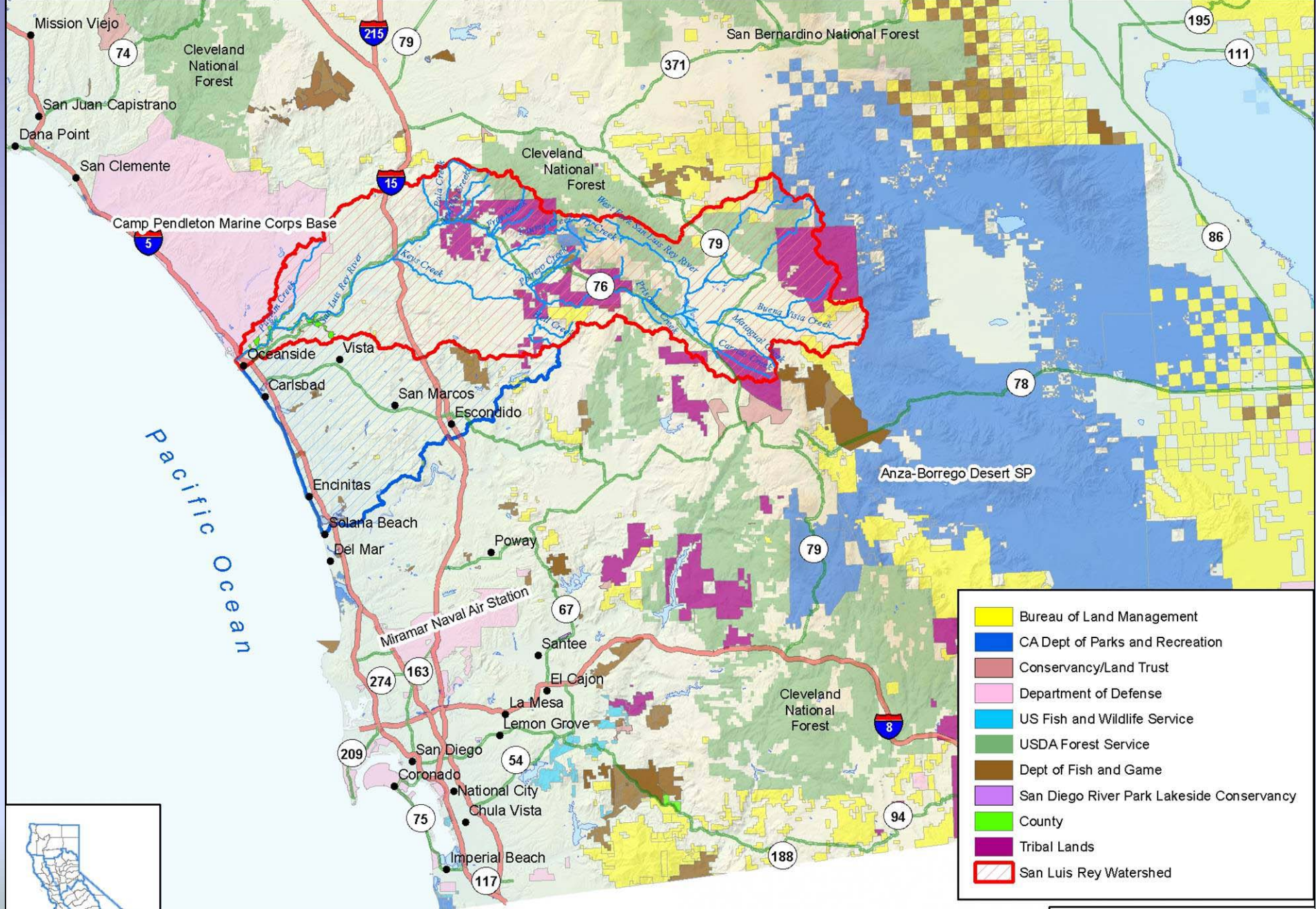


## 14 Imperial Valley Landowner Stewardship Program, Imperial County



The Emanuelli site is 65 acres and will be replanted with native mesquite and various riparian shrubs. Excellent habitat for native birds and other wildlife is possible at this site.





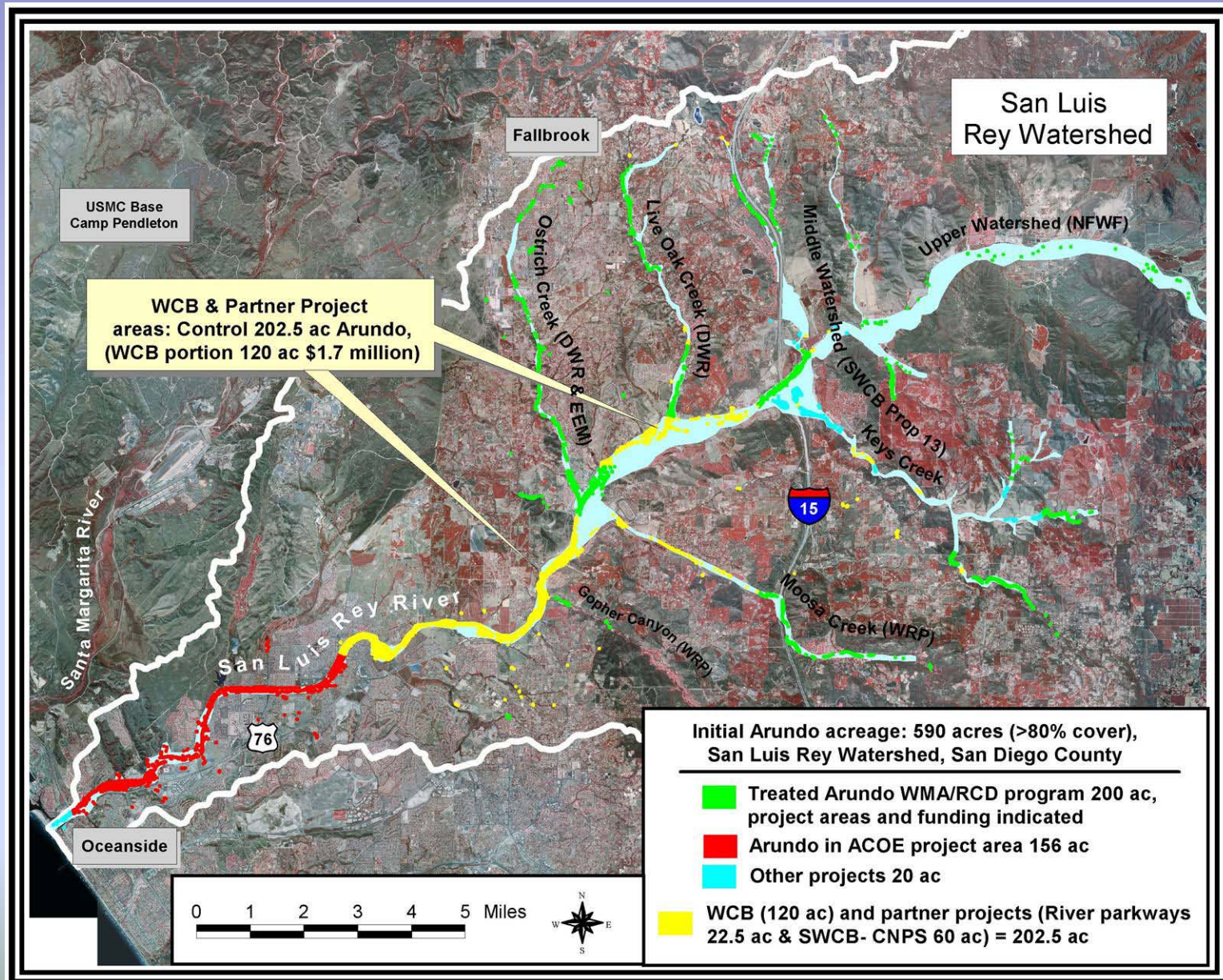
## San Luis Rey Watershed Arundo Eradication and Riparian Habitat Restoration, San Diego County



7.5 Miles  
15 WCB 8/14/2006 gdc



# 15 San Luis Rey Watershed Arundo Eradication and Riparian Habitat Restoration, San Diego County





## 15 San Luis Rey Watershed Arundo Eradication and Riparian Habitat Restoration, San Diego County



Extensive *Arundo* infestation in the San Luis Rey River. Native willow canopy can also be seen.



# 15 San Luis Rey Watershed Arundo Eradication and Riparian Habitat Restoration, San Diego County



More *Arundo* which will be eradicated.



## 15 San Luis Rey Watershed Arundo Eradication and Riparian Habitat Restoration, San Diego County



Restored area with some *Arundo* resprouts. Note the dead *Arundo* mulch.



# 15 San Luis Rey Watershed *Arundo* Eradication and Riparian Habitat Restoration, San Diego County



Retreated *Arundo* resprout in restored area.



# 15 San Luis Rey Watershed Arundo Eradication and Riparian Habitat Restoration, San Diego County



**Bufo californicus Arroyo Toad**



**Southwestern Willow Flycatcher**



Photo by James Gallagher, Sea and Sage Audubon

**Least Bell's Vireo (*Vireo bellii pusillus*)**



Photo by Greg Lasley





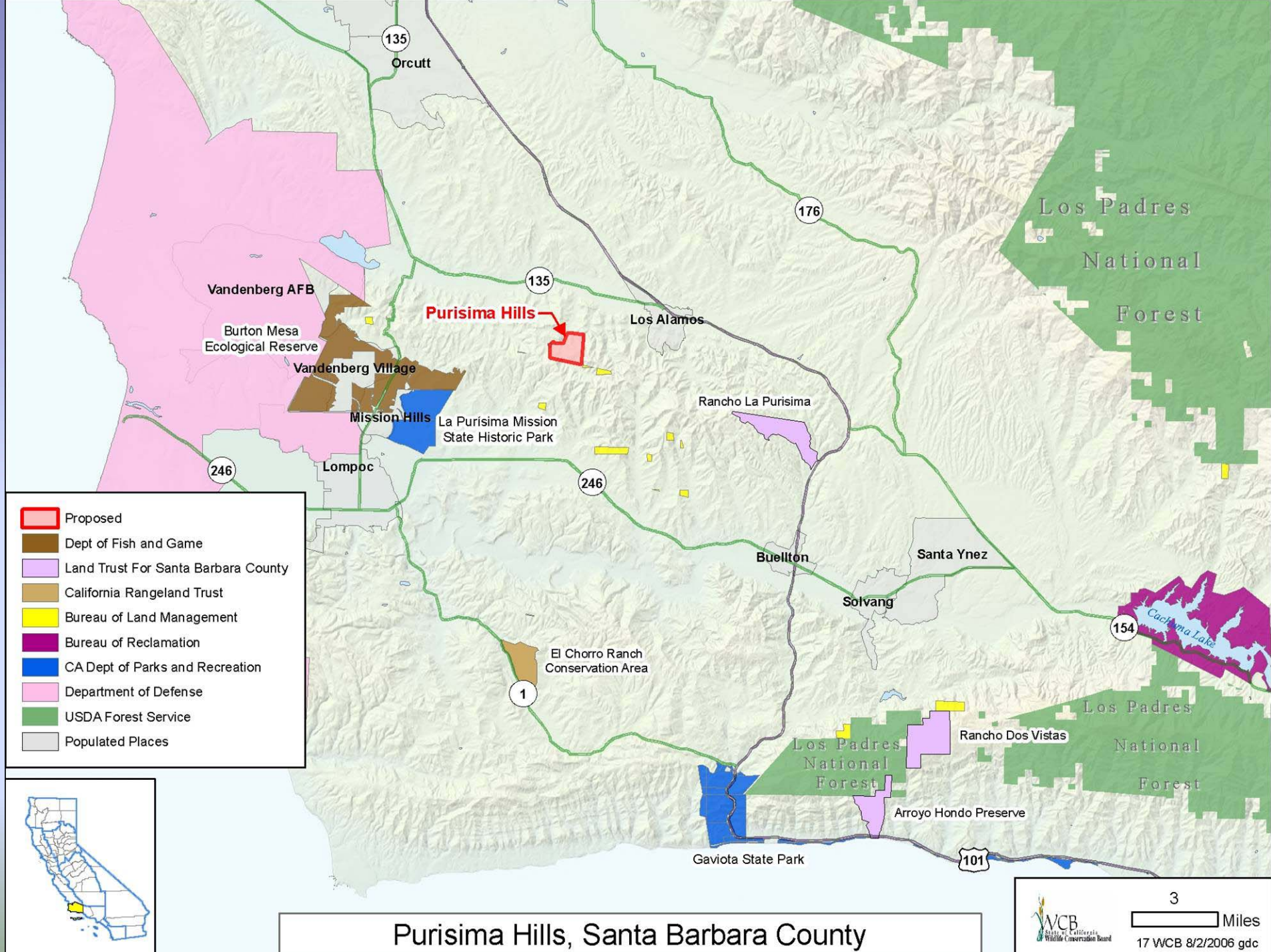


# 16 Sycuan Peak Ecological Reserve, Expansion 4, San Diego County



**Sycuan Peak Ecological Reserve, Expansion 4  
Northwesterly at Beaver Hollow Community in Western Lawson Valley;  
the Property is denoted by the Subject Arrow**





Purisima Hills, Santa Barbara County



## 17 Purisima Hills, Santa Barbara County





## 17 Purisima Hills, Santa Barbara County

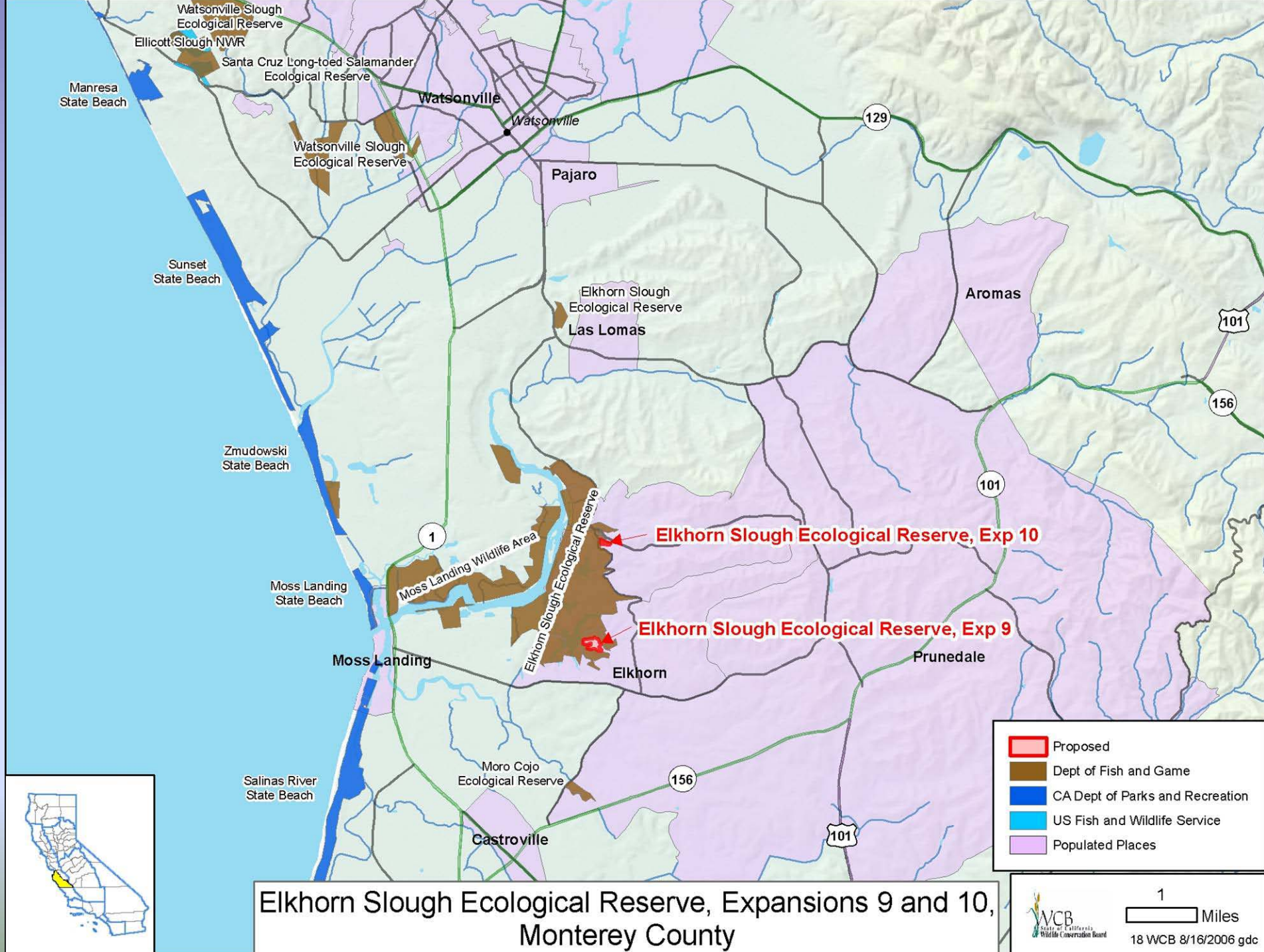




## 17 Purisima Hills, Santa Barbara County









## 18 Elkhorn Slough Ecological Reserve, Expansions 9 and 10, Monterey County

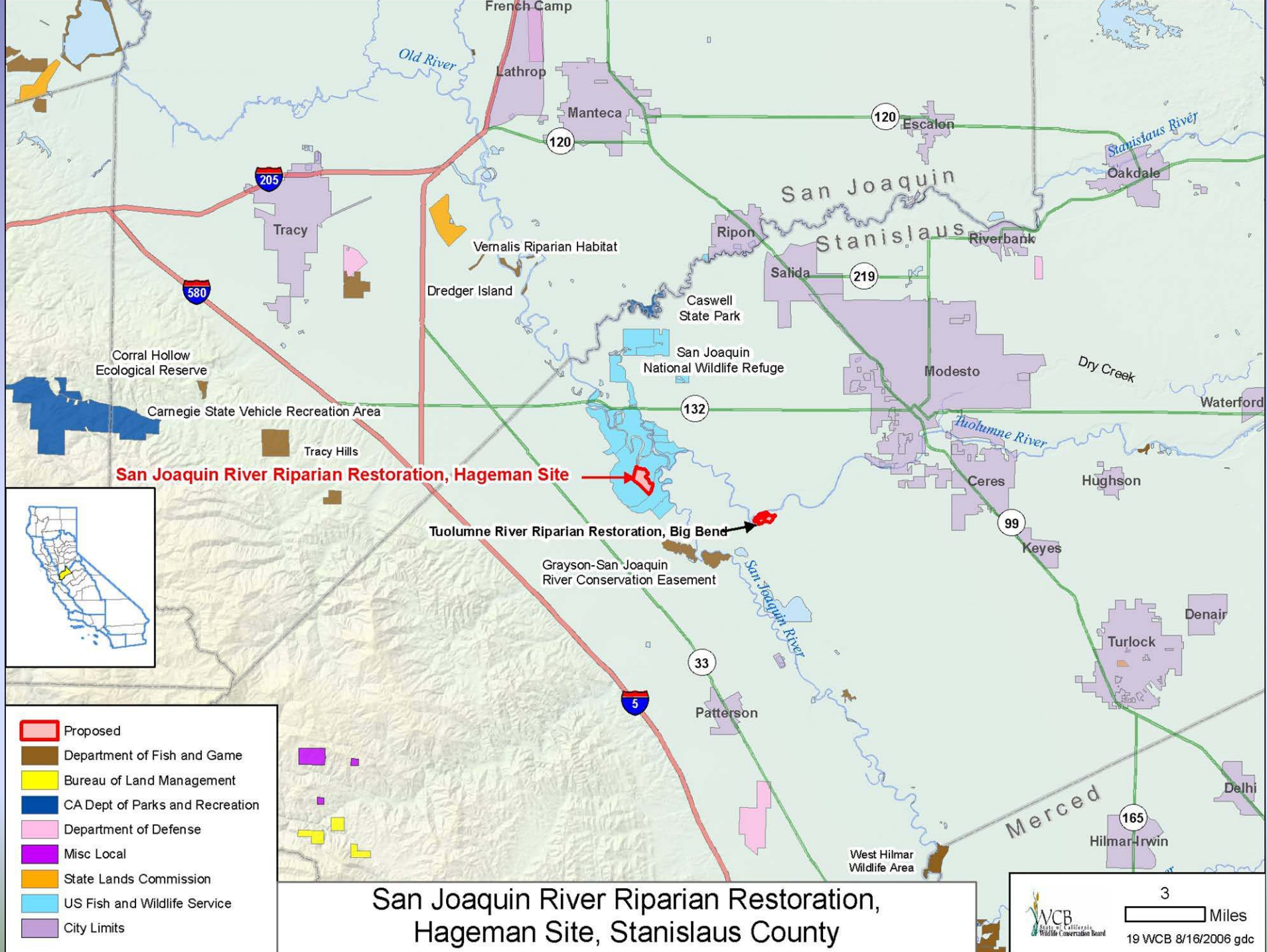




# 18 Elkhorn Slough Ecological Reserve, Expansions 9 and 10, Monterey County









## 19 San Joaquin River Riparian Restoration, Hageman Site, Stanislaus County



Northern portion of Hageman site proposed for riparian restoration – pink area shows extent of flooding from San Joaquin River in spring 2006



## 19 San Joaquin River Riparian Restoration, Hageman Site, Stanislaus County



Southern portion of Hageman site proposed for riparian restoration – this is higher ground and will serve as a riparian brush rabbit refugium during floods



## 19 San Joaquin River Riparian Restoration, Hageman Site, Stanislaus County



Least Bell's vireo, has occupied the restored area in 2005 and 2006

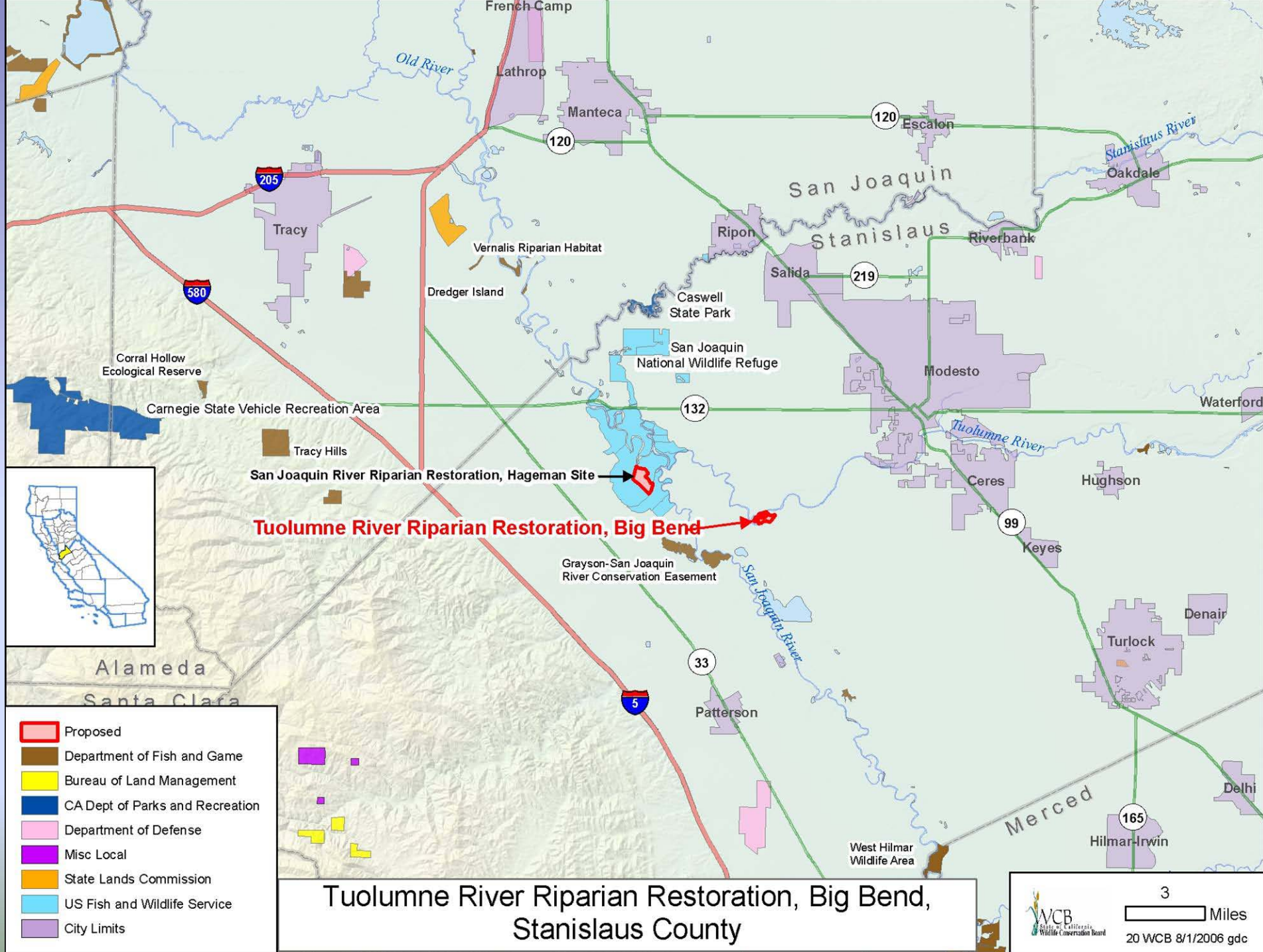


## 19 San Joaquin River Riparian Restoration, Hageman Site, Stanislaus County



Riparian brush rabbit with radio collar being released near SJR Refuge restoration area









Proposed



# Tuolumne River Riparian Restoration, Big Bend, Stanislaus County



0.1

Miles

20 WCB 8/1/2006 gdc



## 20 Tuolumne River Riparian Restoration, Big Bend, Stanislaus County



One of the fields to be planted in riparian vegetation in this project



## 20 Tuolumne River Riparian Restoration, Big Bend, Stanislaus County



Field planted to riparian vegetation in 2005







## 21 Pacifica Fishing Pier, San Mateo County





## 21 Pacifica Fishing Pier, San Mateo County





## 21 Pacifica Fishing Pier, San Mateo County





## 21 Pacifica Fishing Pier, San Mateo County





## 21 Pacifica Fishing Pier, San Mateo County

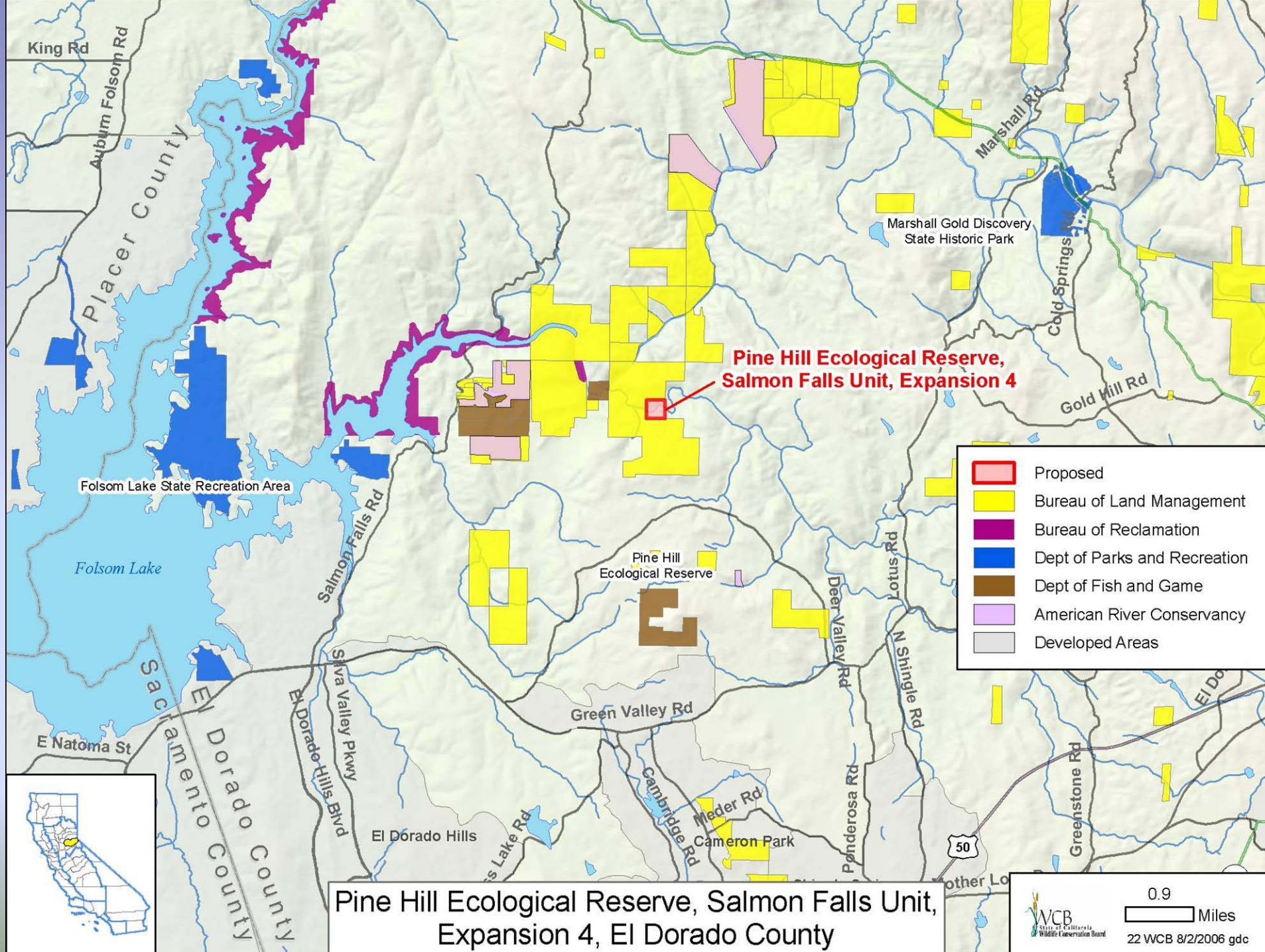




## 21 Pacifica Fishing Pier, San Mateo County









## 22 Pine Hill Ecological Reserve, Salmon Falls Unit, Expansion 4, El Dorado County





## 22 Pine Hill Ecological Reserve, Salmon Falls Unit, Expansion 4, El Dorado County

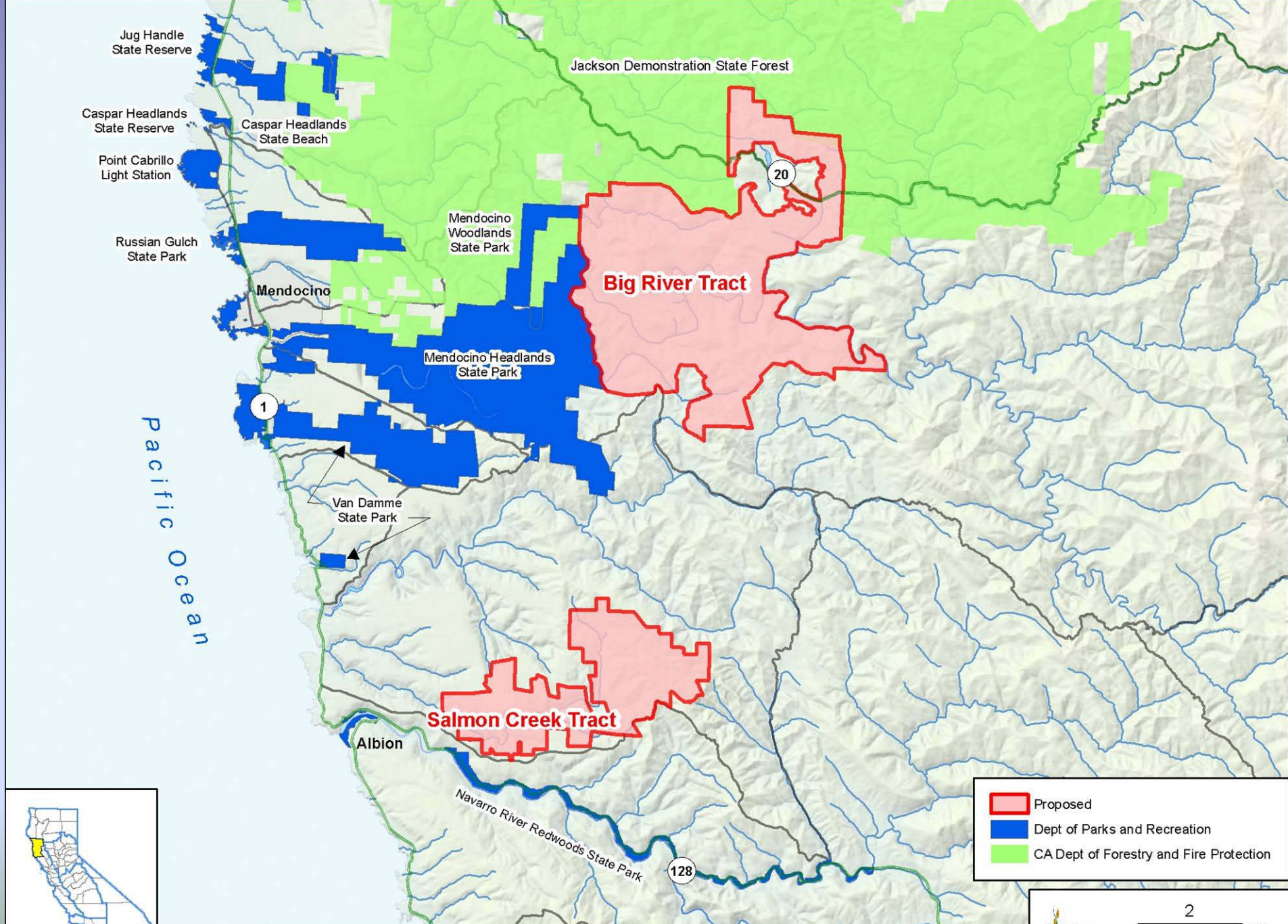




## 22 Pine Hill Ecological Reserve, Salmon Falls Unit, Expansion 4, El Dorado County







## Big River/Salmon Creek Forestlands, Mendocino County



2 Miles  
23 WCB 7/31/2006 gdc



## 23 Big River/Salmon Creek Forestlands, Mendocino County





## 23 Big River/Salmon Creek Forestlands, Mendocino County





## 23 Big River/Salmon Creek Forestlands, Mendocino County

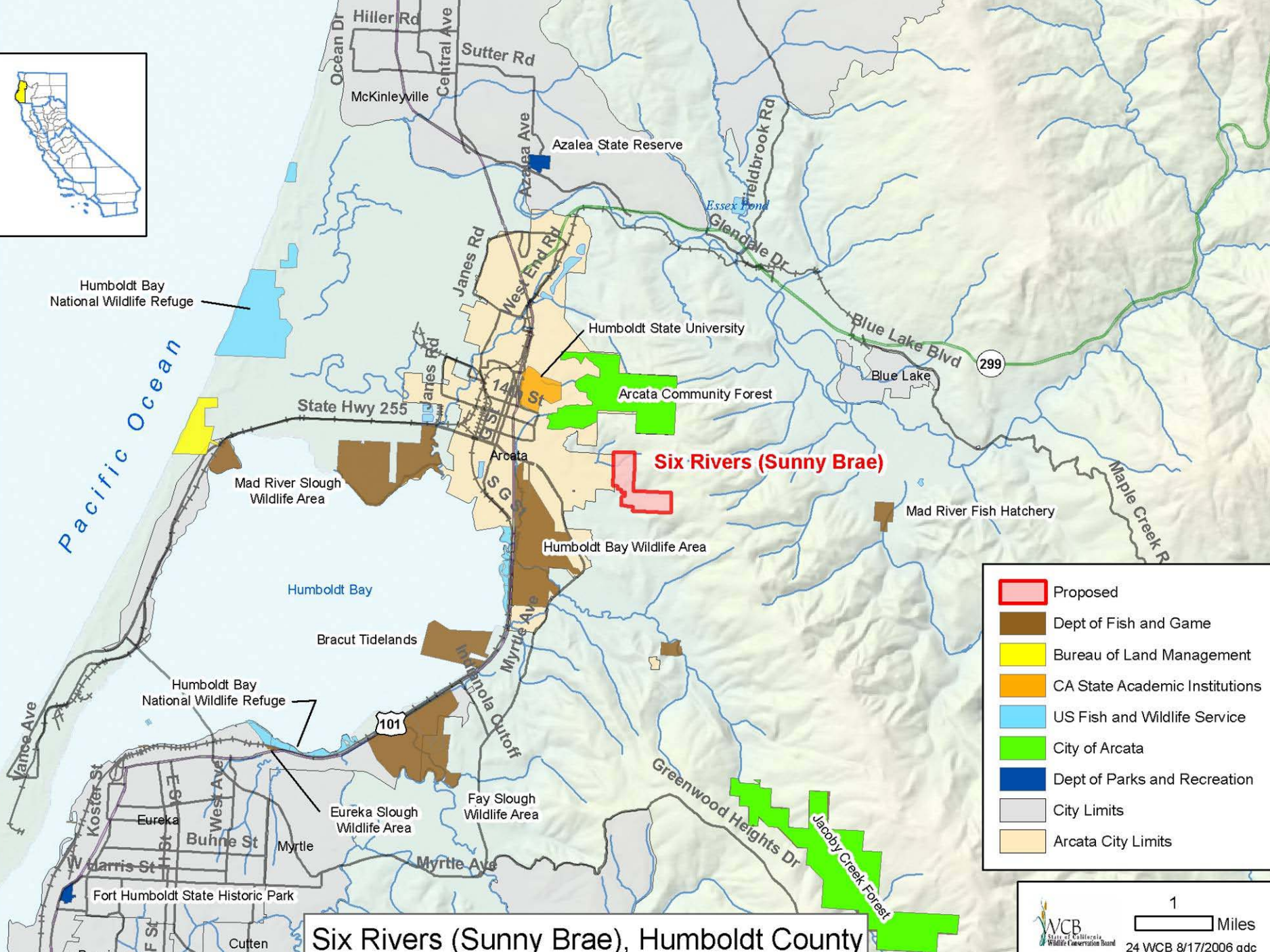




## 23 Big River/Salmon Creek Forestlands, Mendocino County







- Proposed
- Dept of Fish and Game
- Bureau of Land Management
- CA State Academic Institutions
- US Fish and Wildlife Service
- City of Arcata
- Dept of Parks and Recreation
- City Limits
- Arcata City Limits

Six Rivers (Sunny Brae), Humboldt County



## 24 Six Rivers (Sunny Brae), Humboldt County





## 24 Six Rivers (Sunny Brae), Humboldt County





## 24 Six Rivers (Sunny Brae), Humboldt County

