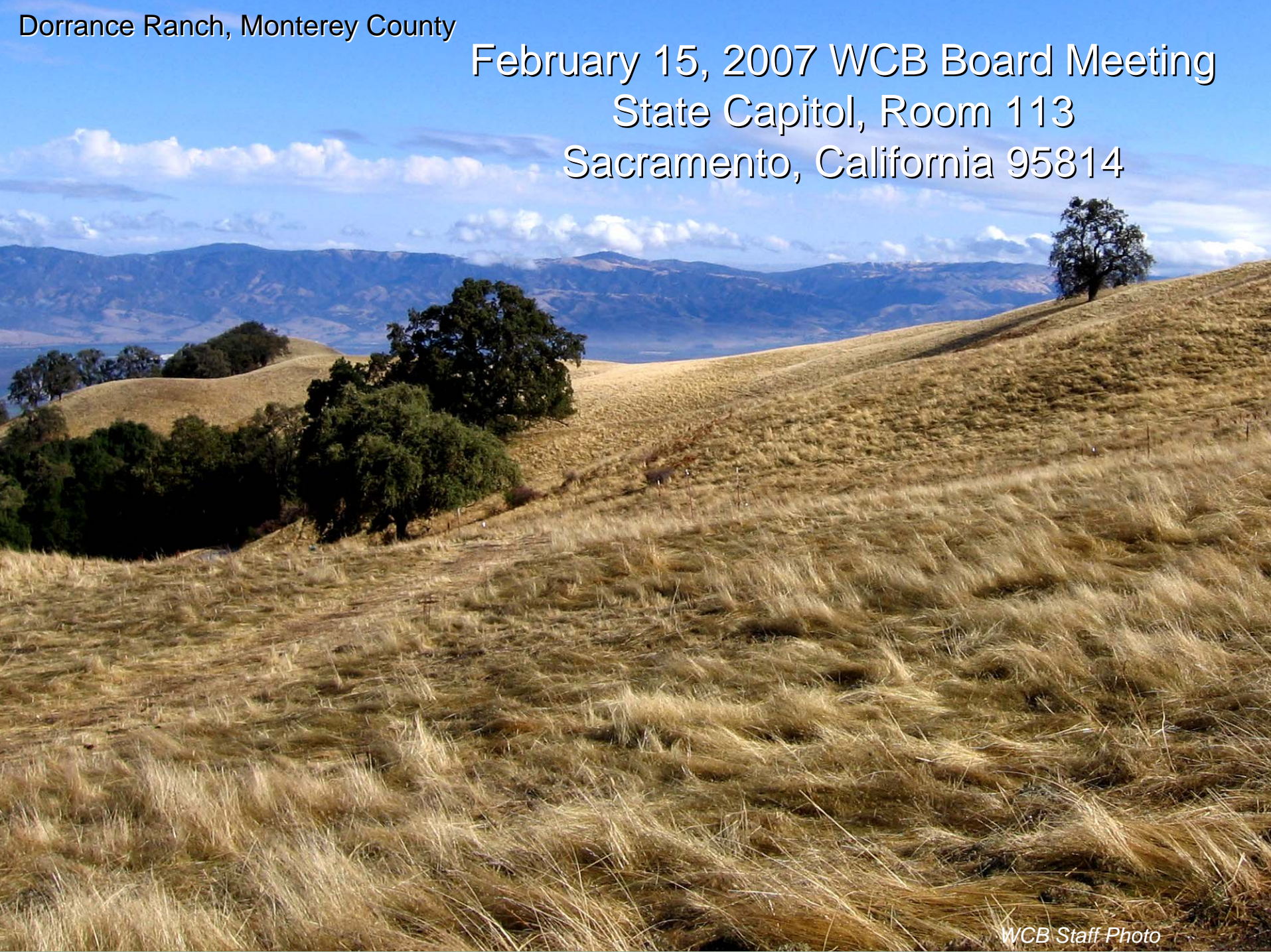
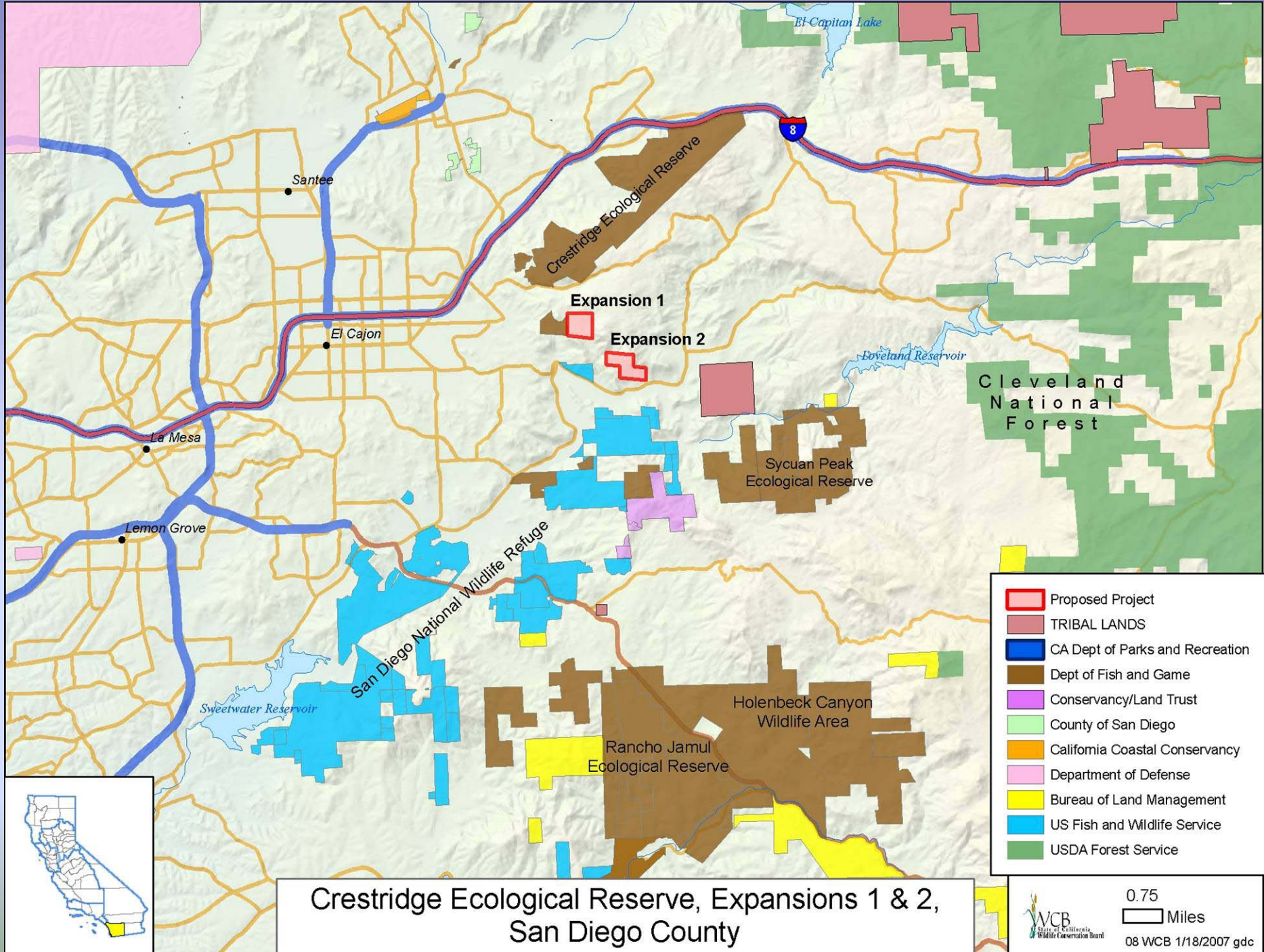


Dorrance Ranch, Monterey County

February 15, 2007 WCB Board Meeting
State Capitol, Room 113
Sacramento, California 95814



WCB Staff Photo



Crestridge Ecological Reserve, Expansion 1, San Diego County



Project withdrawn from consideration at this time.



Seal Beach Pier Deck Rehabilitation,
Orange County



0.5
Miles
10 WCB 1/17/2007 gdc

Seal Beach Pier Deck Rehabilitation



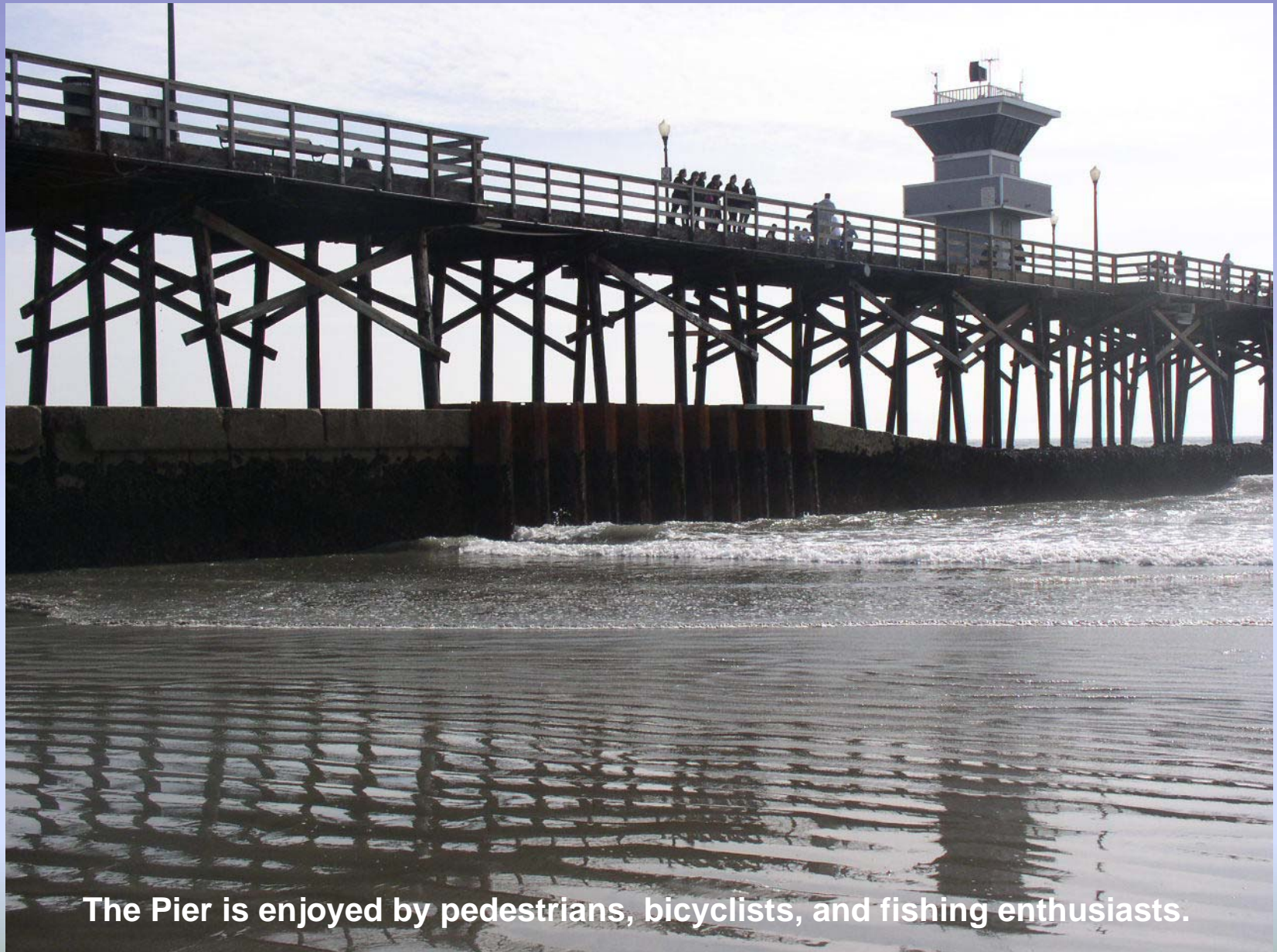
Seal Beach Pier

Seal Beach Pier Deck Rehabilitation



Fishing is a popular recreational activity at Seal Beach Pier.

Seal Beach Pier Deck Rehabilitation



The Pier is enjoyed by pedestrians, bicyclists, and fishing enthusiasts.

Seal Beach Pier Deck Rehabilitation



Pier provides scenic views of the beach and the Pacific Ocean.

Seal Beach Pier Deck Rehabilitation

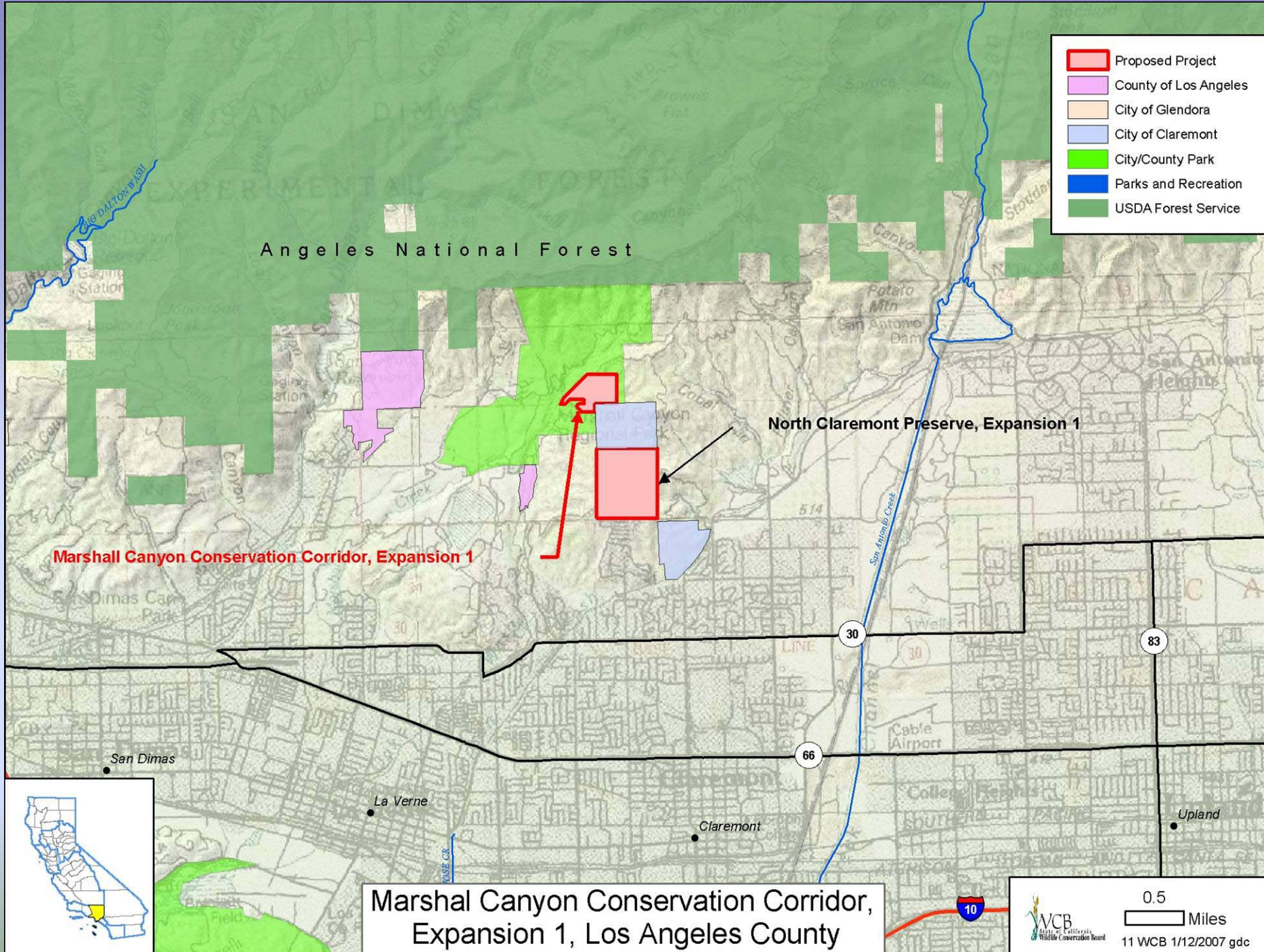


Visible wearing and deterioration of the deck surface.

Seal Beach Pier Deck Rehabilitation



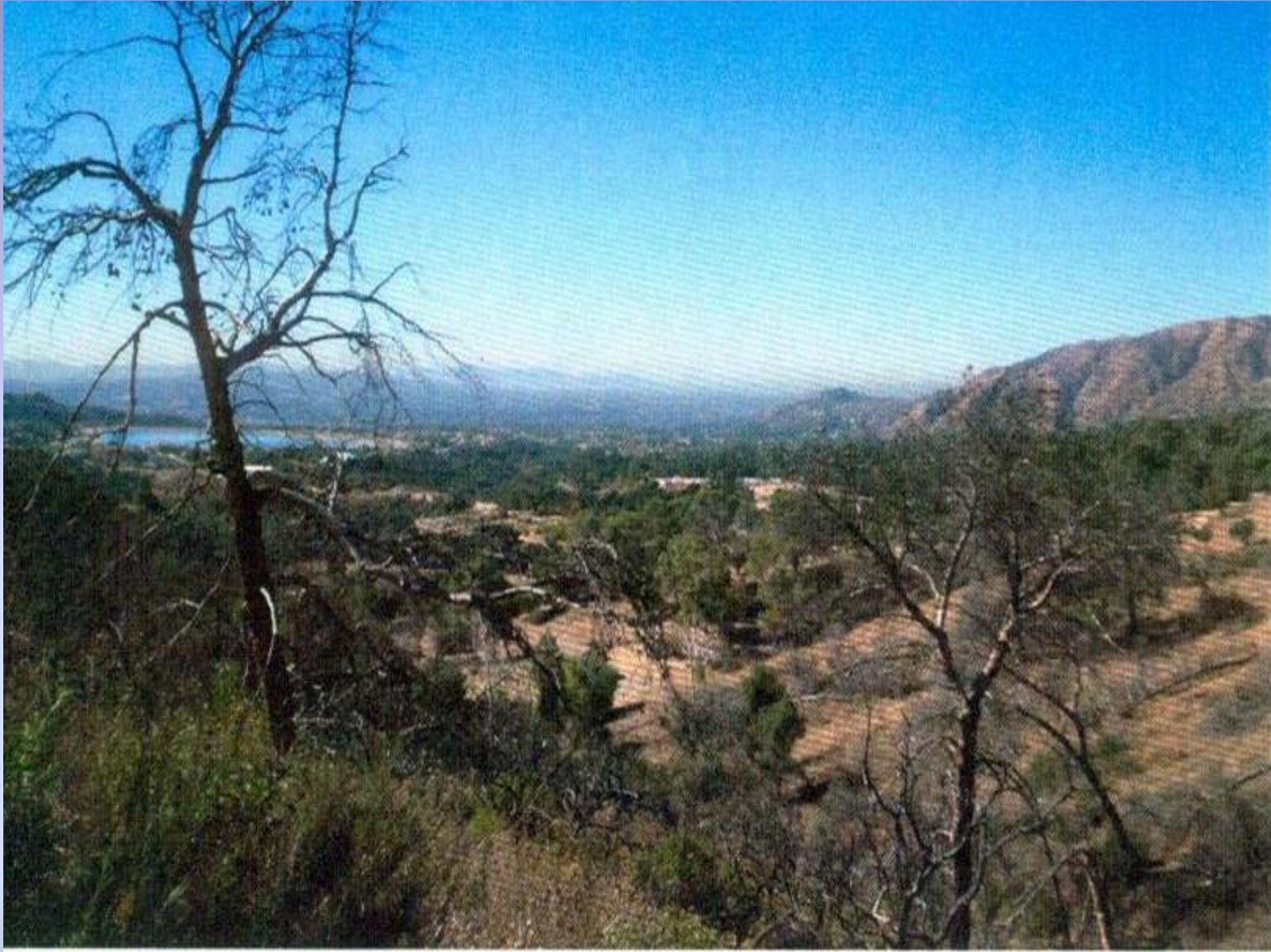
Visible wearing and uneven surface due to softwood material.



Marshall Canyon Conservation Corridor, Expansion 1, Los Angeles County



Marshall Canyon Conservation Corridor, Expansion 1, Los Angeles County

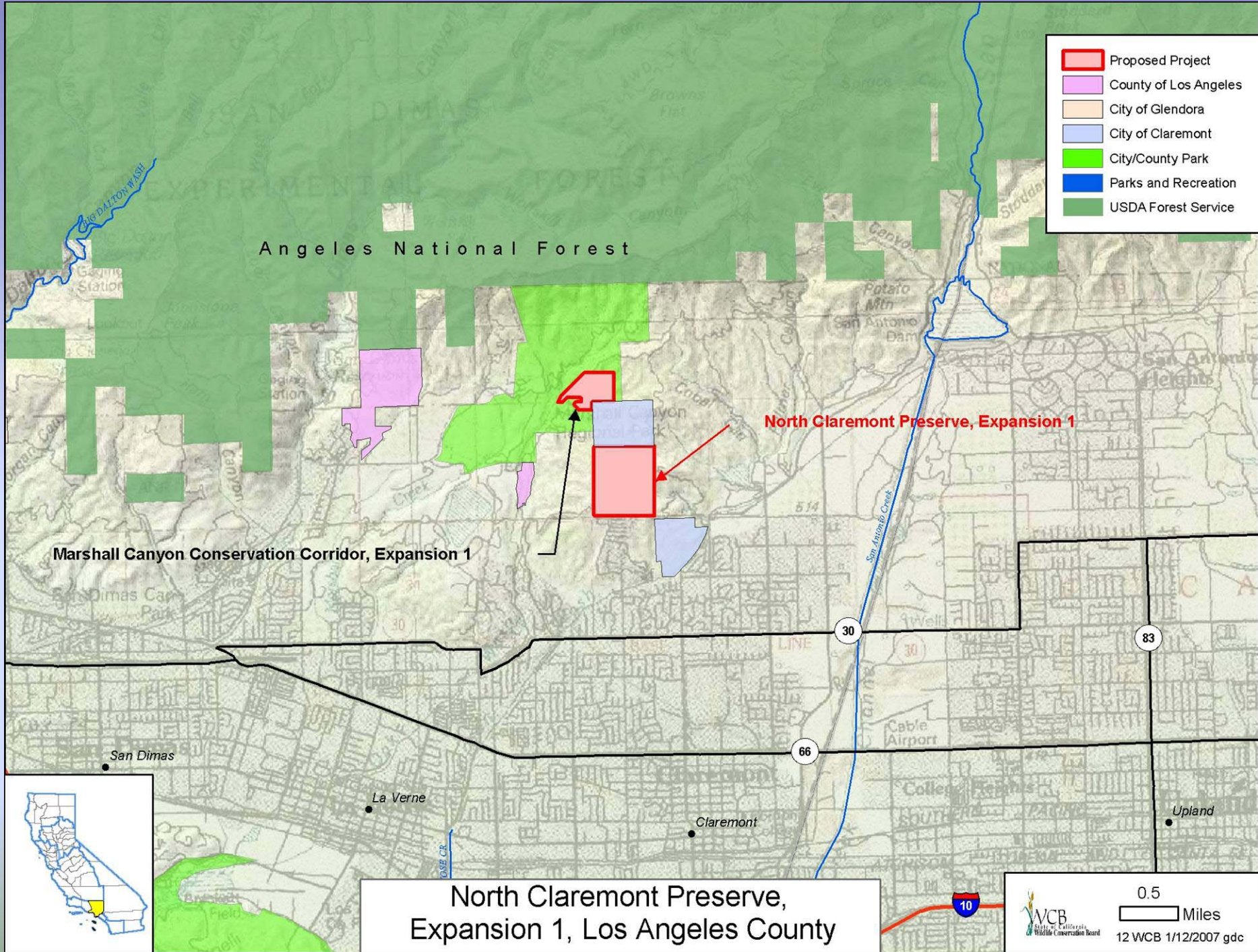


View looking southerly from water tanks located fairly centrally on the property.

Marshall Canyon Conservation Corridor, Expansion 1, Los Angeles County



View looking westerly from the water tanks.



- Proposed Project
- County of Los Angeles
- City of Glendora
- City of Claremont
- City/County Park
- Parks and Recreation
- USDA Forest Service

Angeles National Forest

Marshall Canyon Conservation Corridor, Expansion 1

North Claremont Preserve, Expansion 1

San Dimas

La Verne

Claremont

Upland

North Claremont Preserve,
Expansion 1, Los Angeles County

North Claremont Preserve, Exp 1



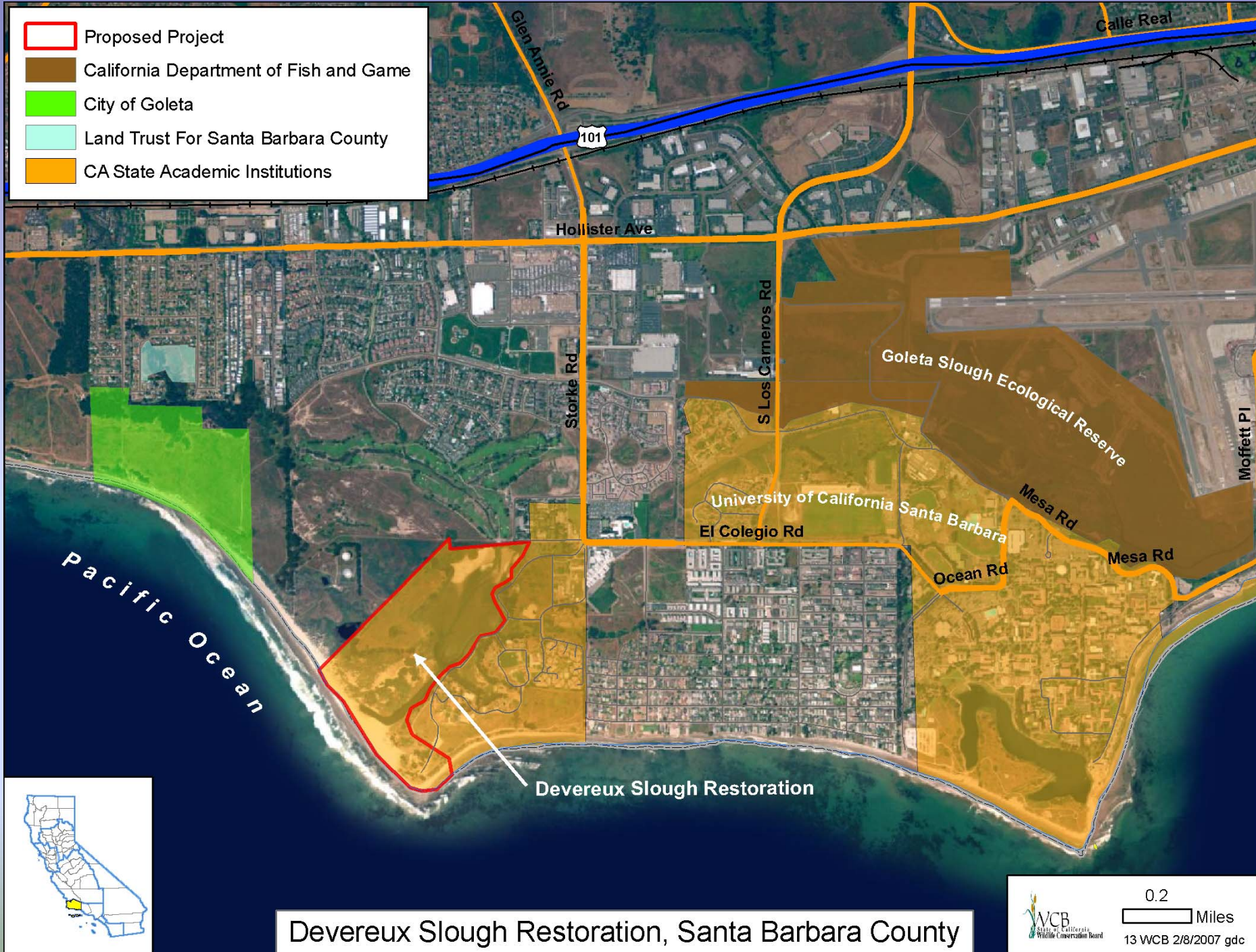
North Claremont Preserve, Exp 1



North Claremont Preserve, Exp 1



- Proposed Project
- California Department of Fish and Game
- City of Goleta
- Land Trust For Santa Barbara County
- CA State Academic Institutions



Devereux Slough Restoration, Santa Barbara County

Devereux Slough Restoration, Santa Barbara County



Devereux Slough Restoration, Santa Barbara County



Eucalyptus, in background on right, will be controlled. All scattered tamarisk - two trees can be seen in the middle distance on left - will be removed.

Devereux Slough Restoration, Santa Barbara County



Earlier weed control projects were very successful – there are very few non-native species in this photo, except for the dead stalks.

Devereux Slough Restoration, Santa Barbara County

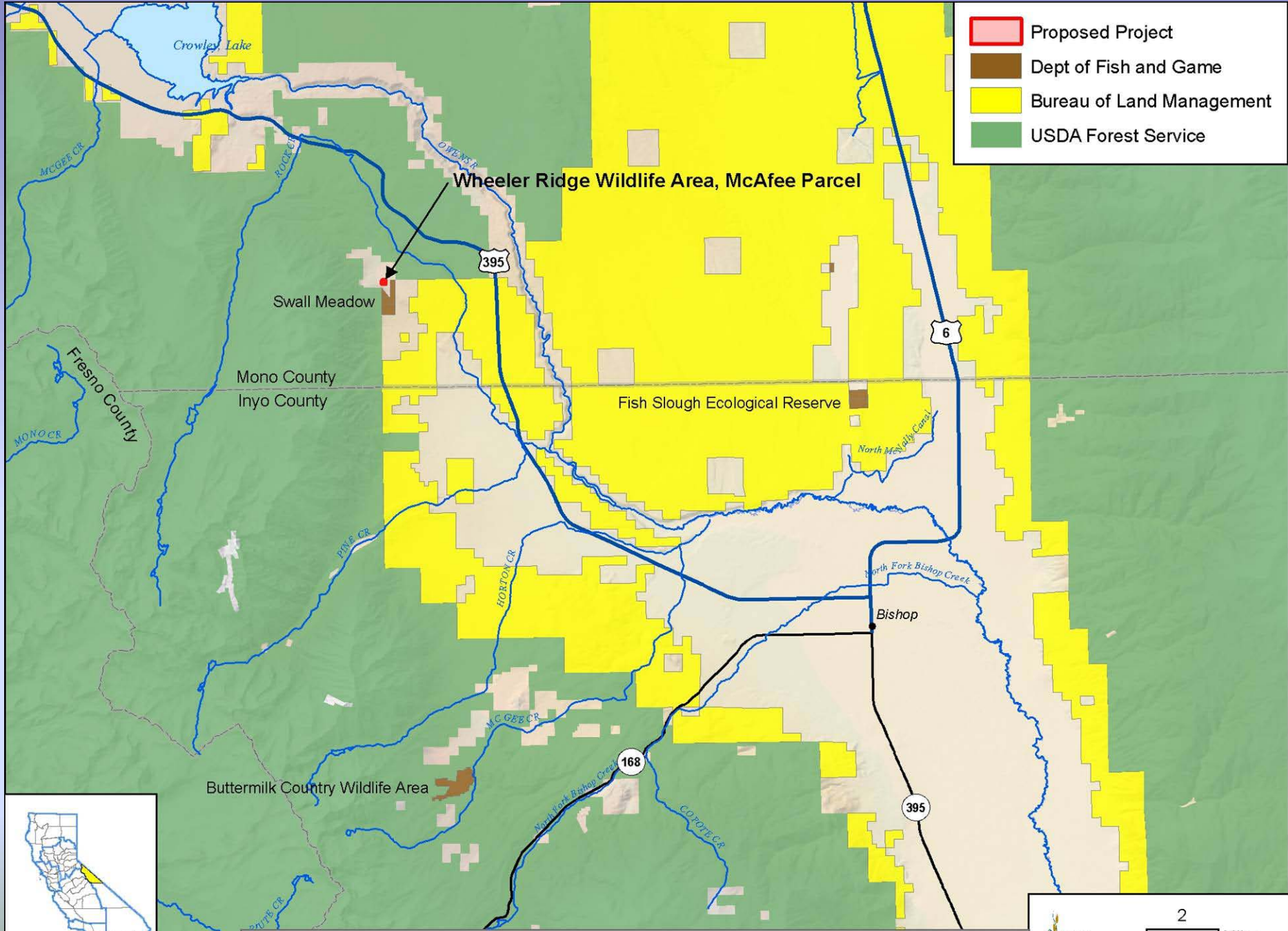


Upland plantings, grasses and forbs, from a previous restoration effort are thriving.

Devereux Slough Restoration, Santa Barbara County



A restored natural area adjacent to the slough now covered with native shrubs.



Wheeler Ridge Wildlife Area, Mc Afee Parcel, Mono County

Wheeler Ridge Wildlife Area, Mono County



View looking southwest from the northeast corner of subject – Wheeler Ridge in background

Wheeler Ridge Wildlife Area, Mono County



Wheeler Ridge Wildlife Area, Mono County



View looking northwest to subject in distance – near center of picture and horizon.

Wheeler Ridge Wildlife Area, Mono County



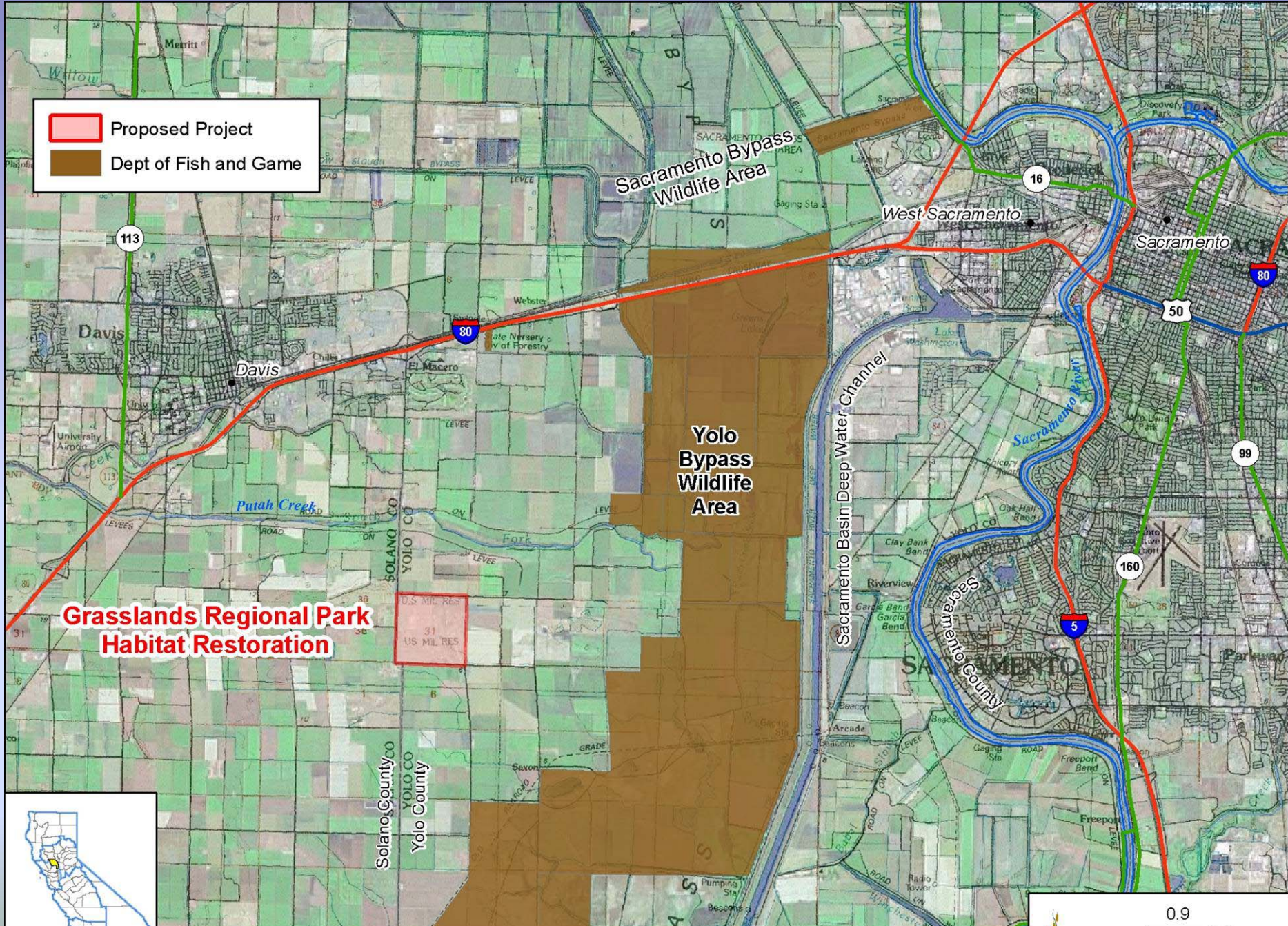
Close up view of habitat. Migration north/south corridor shown from left to right on photo. Wheeler Ridge in background.

Wheeler Ridge Wildlife Area, Mono County



Wheeler Ridge Wildlife Area, Mono County





- Proposed Project
- Dept of Fish and Game

**Grasslands Regional Park
Habitat Restoration**

Grasslands Regional Park Habitat Restoration, Yolo County



0.9 Miles
WCB 1/3/2007 gdc

Grasslands Regional Park Habitat Restoration, Yolo County



Grasslands Regional Park Habitat Restoration, Yolo County



Grasslands Regional Park Habitat Restoration, Yolo County



Perennial Pepperweed

Grasslands Regional Park Habitat Restoration, Yolo County



Yellow Starthistle

Grasslands Regional Park Habitat Restoration, Yolo County








Burrowing Owl

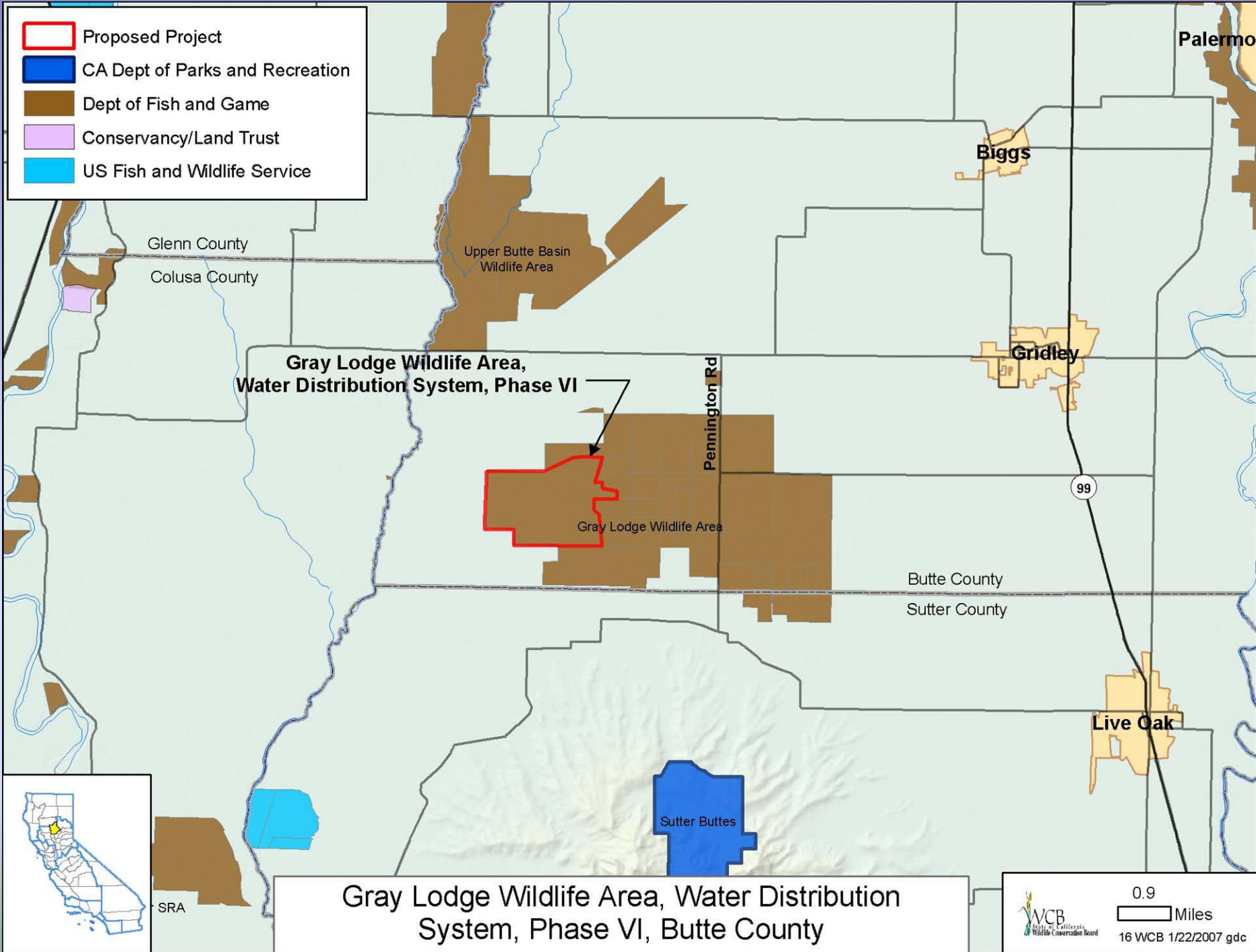


Alkali Milk Vetch



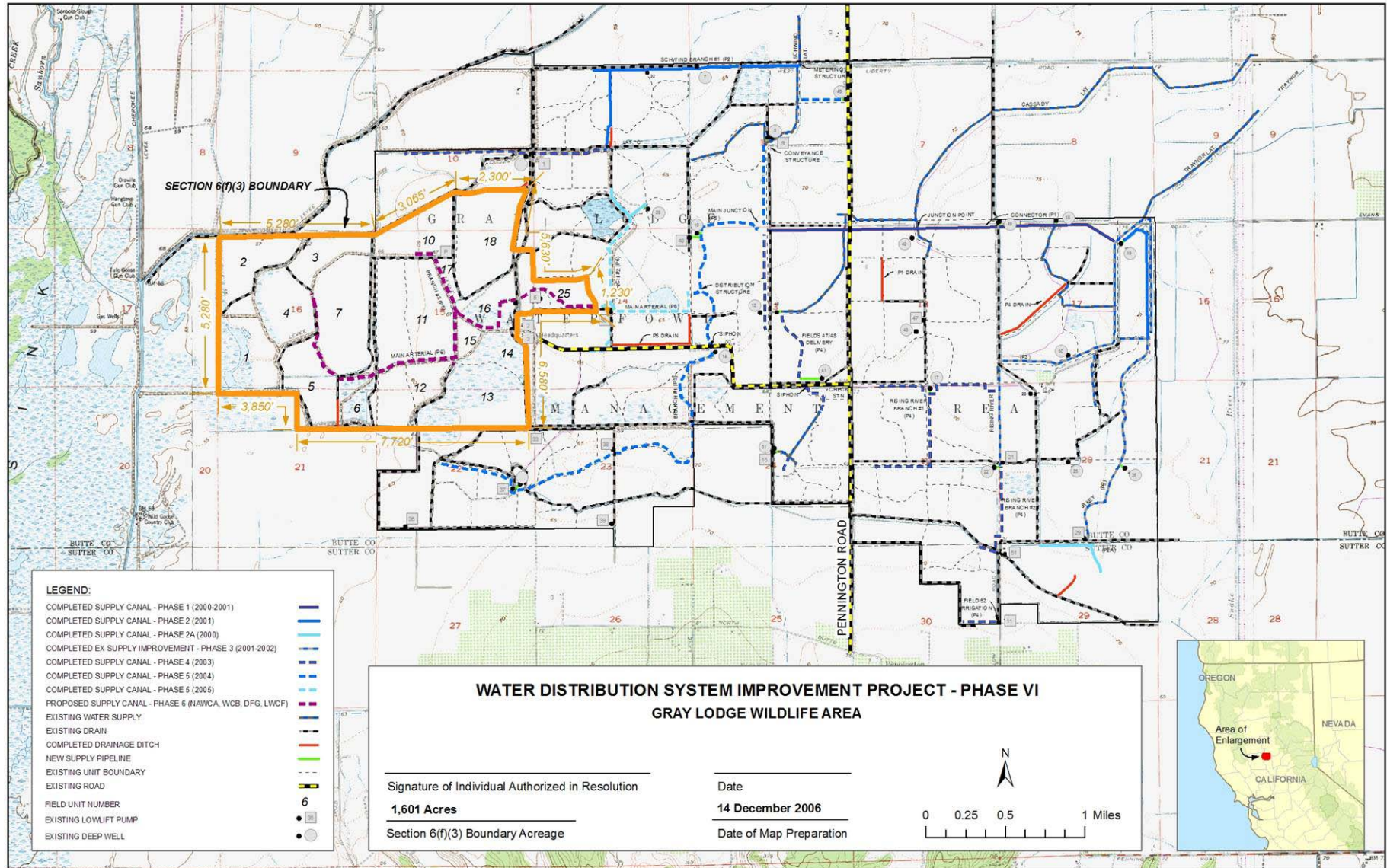
← Crampton's Tuctoria

-  Proposed Project
-  CA Dept of Parks and Recreation
-  Dept of Fish and Game
-  Conservancy/Land Trust
-  US Fish and Wildlife Service



Gray Lodge Wildlife Area, Water Distribution System, Phase VI, Butte County

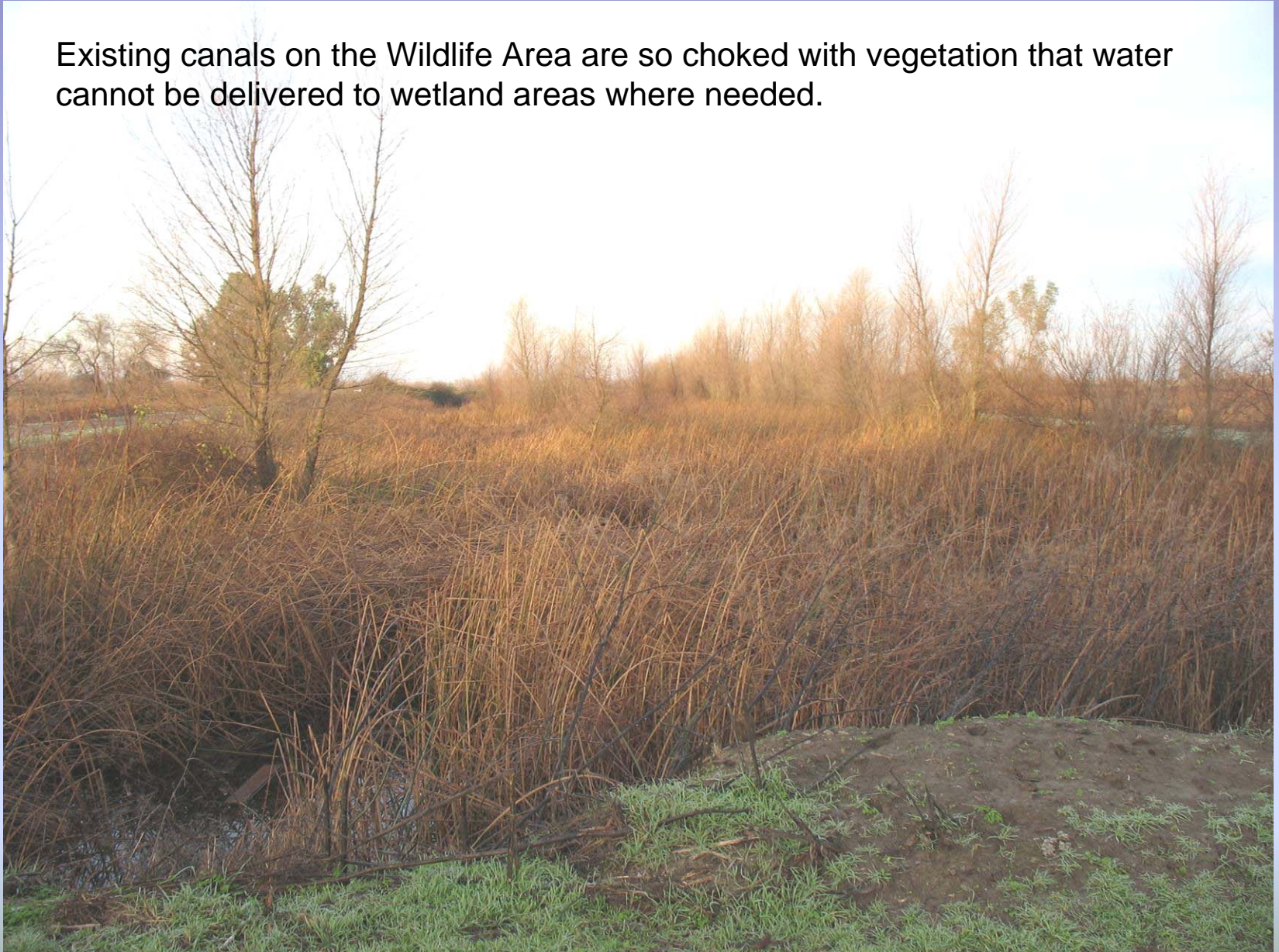
Gray Lodge Wildlife Area, Water Distribution System, Phase VI, Butte and Sutter Counties



Section 6(f)(3) Boundary Map

Gray Lodge Wildlife Area, Water Distribution System, Phase VI, Butte and Sutter Counties

Existing canals on the Wildlife Area are so choked with vegetation that water cannot be delivered to wetland areas where needed.



Gray Lodge Wildlife Area, Water Distribution System, Phase VI, Butte and Sutter Counties



Existing small structures will be replaced as needed.

Gray Lodge Wildlife Area, Water Distribution System, Phase VI, Butte and Sutter Counties


Canals will be renovated or built from scratch as necessary to provide water delivery and drainage.




Gray Lodge Wildlife Area, Water Distribution System, Phase VI, Butte and Sutter Counties

Existing wetlands on the Wildlife Area.



 Proposed Project

 Dept of Fish and Game

Jewett Creek

Jewett Creek Riparian Habitat Restoration

Sacramento River
Wildlife Area

Merrill's Landing
Wildlife Area

Sacramento River



Jewett Creek Riaprian Habitat Restoration, Tehama County



0.25
Miles

17 WCB 1/24/2007 gdc

Jewett Creek Riparian Habitat Restoration, Tehama County



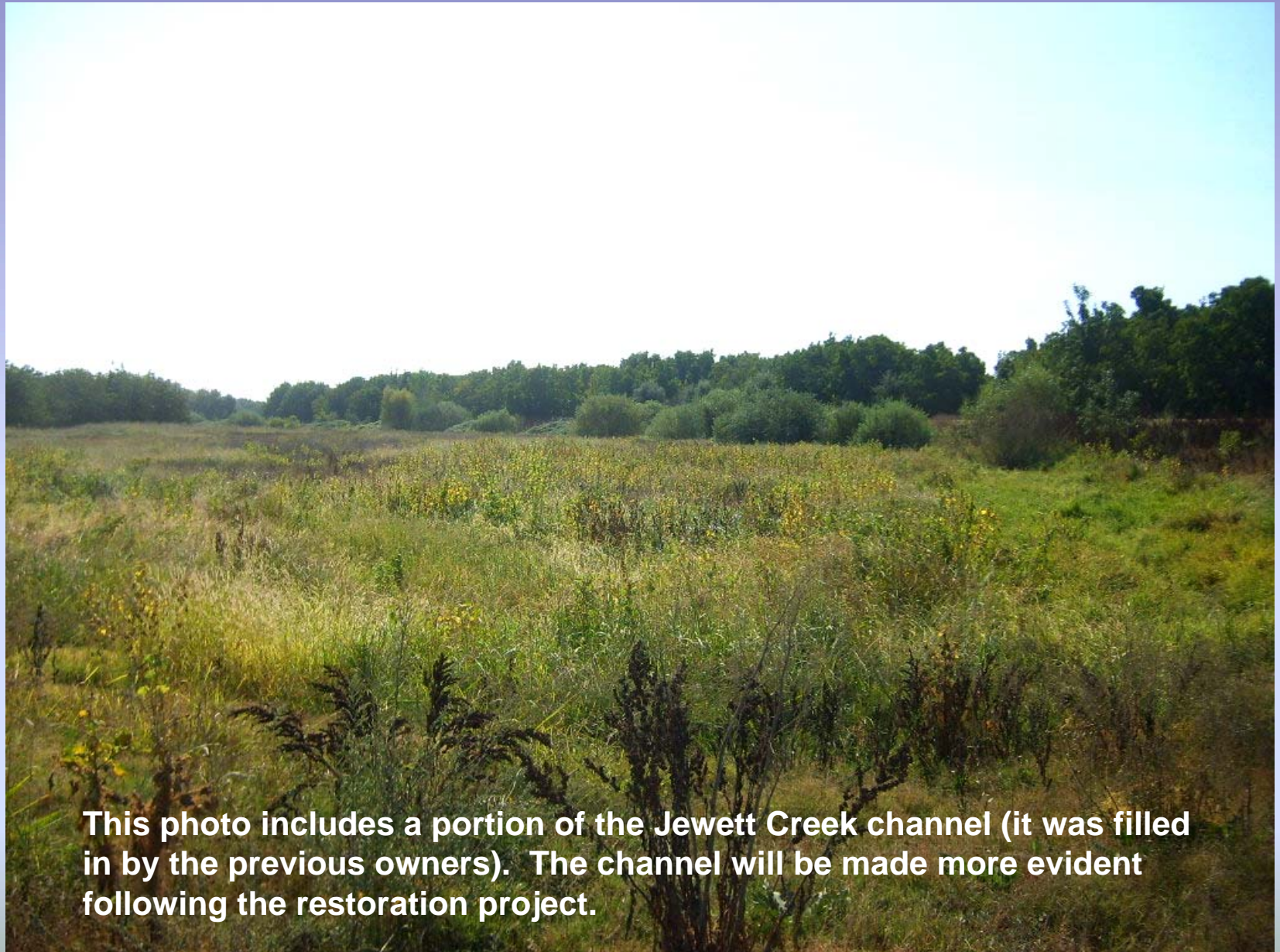
This field was walnut orchard, and has been cleared to prepare for the restoration

Jewett Creek Riparian Habitat Restoration, Tehama County



Same field, different angle of view

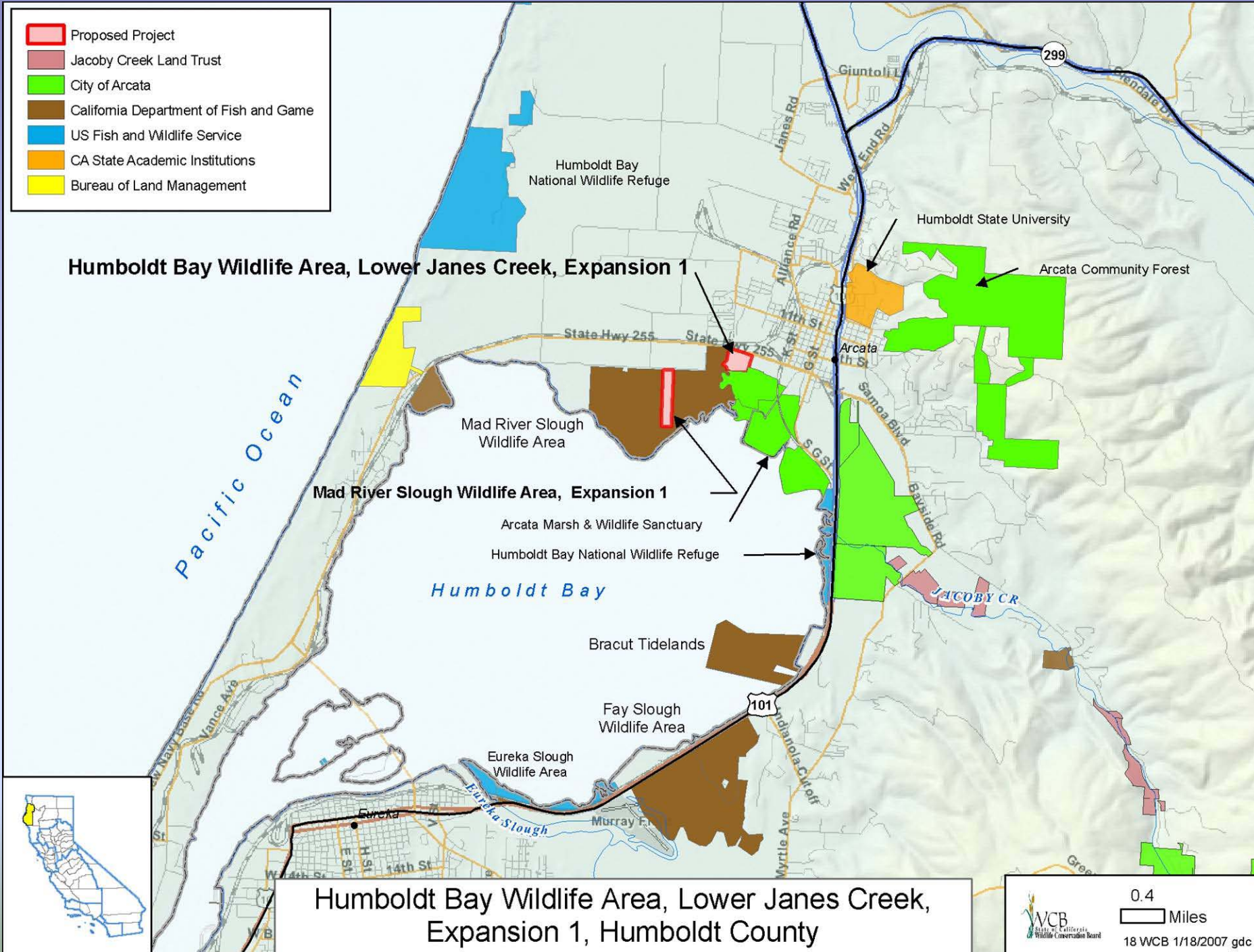
Jewett Creek Riparian Habitat Restoration, Tehama County



This photo includes a portion of the Jewett Creek channel (it was filled in by the previous owners). The channel will be made more evident following the restoration project.

- Proposed Project
- Jacoby Creek Land Trust
- City of Arcata
- California Department of Fish and Game
- US Fish and Wildlife Service
- CA State Academic Institutions
- Bureau of Land Management

Humboldt Bay Wildlife Area, Lower Janes Creek, Expansion 1



Humboldt Bay Wildlife Area, Lower Janes Creek,
Expansion 1, Humboldt County



0.4
Miles

18 WCB 1/18/2007 gdc

Humboldt Bay WA, Lower Janes Creek, Exp 1, Humboldt County



View of subject looking southeast from State Highway 255 (Samoa Road)

Humboldt Bay WA, Lower Janes Creek, Exp 1, Humboldt County



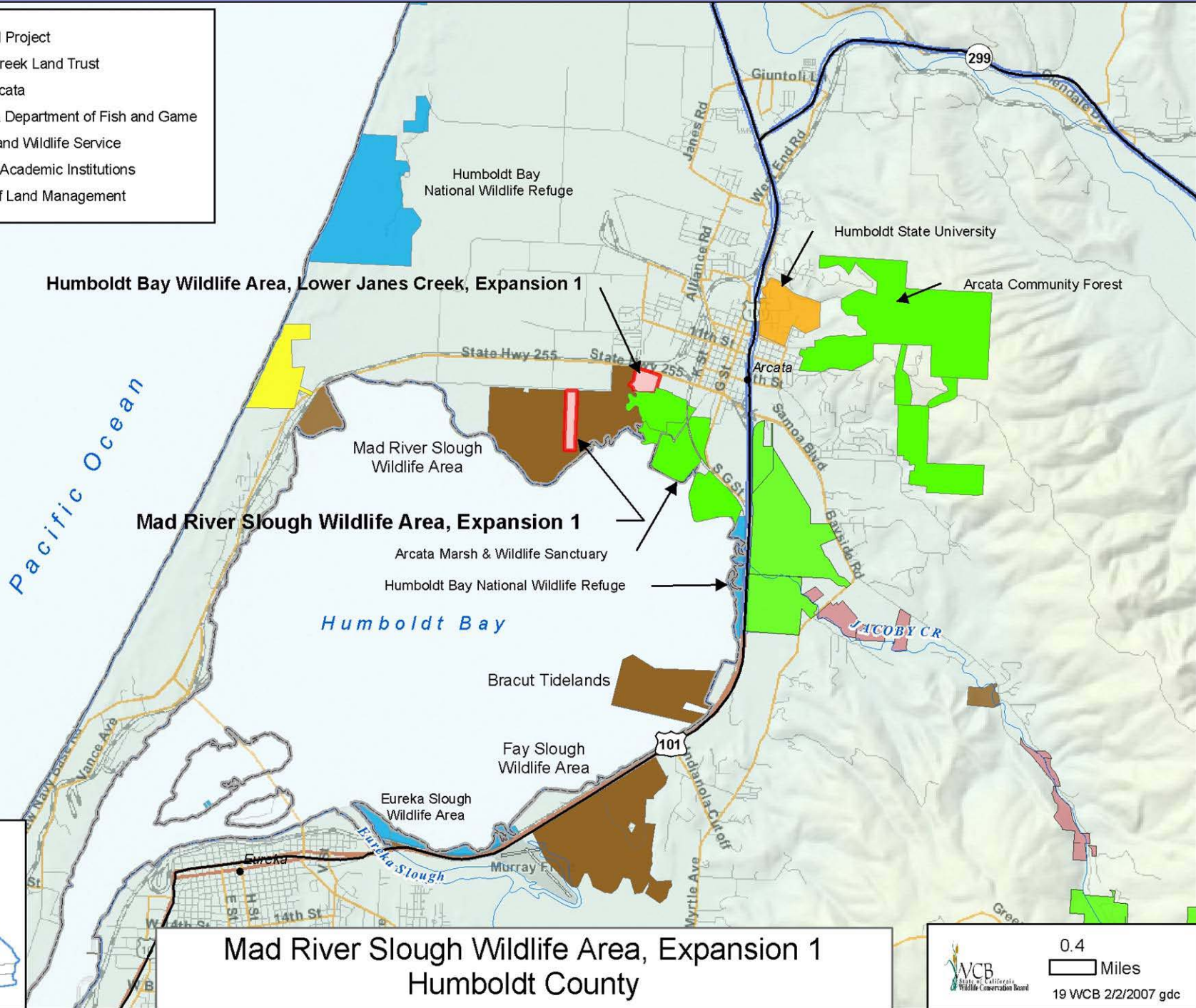
View of Lower Janes Creek looking south from State Highway 255. Subject on left.

Humboldt Bay WA, Lower Janes Creek, Exp 1, Humboldt County



View of subject looking towards State Highway 255 (Samoa Road) from south end of property. Lower Janes Creek on left. Subject property on right.

- Proposed Project
- Jacoby Creek Land Trust
- City of Arcata
- California Department of Fish and Game
- US Fish and Wildlife Service
- CA State Academic Institutions
- Bureau of Land Management



Humboldt Bay Wildlife Area, Lower Janes Creek, Expansion 1

Mad River Slough Wildlife Area, Expansion 1

**Mad River Slough Wildlife Area, Expansion 1
Humboldt County**



0.4
Miles
19 WCB 2/2/2007 gdc

Mad River Slough Wildlife Area, Exp 1, Humboldt County



View looking west along Old Samoa Road – Subject on left.

Mad River Slough Wildlife Area, Exp 1, Humboldt County



View looking south from Old Samoa Road along the easterly boundary line.

Mad River Slough Wildlife Area, Exp 1, Humboldt County



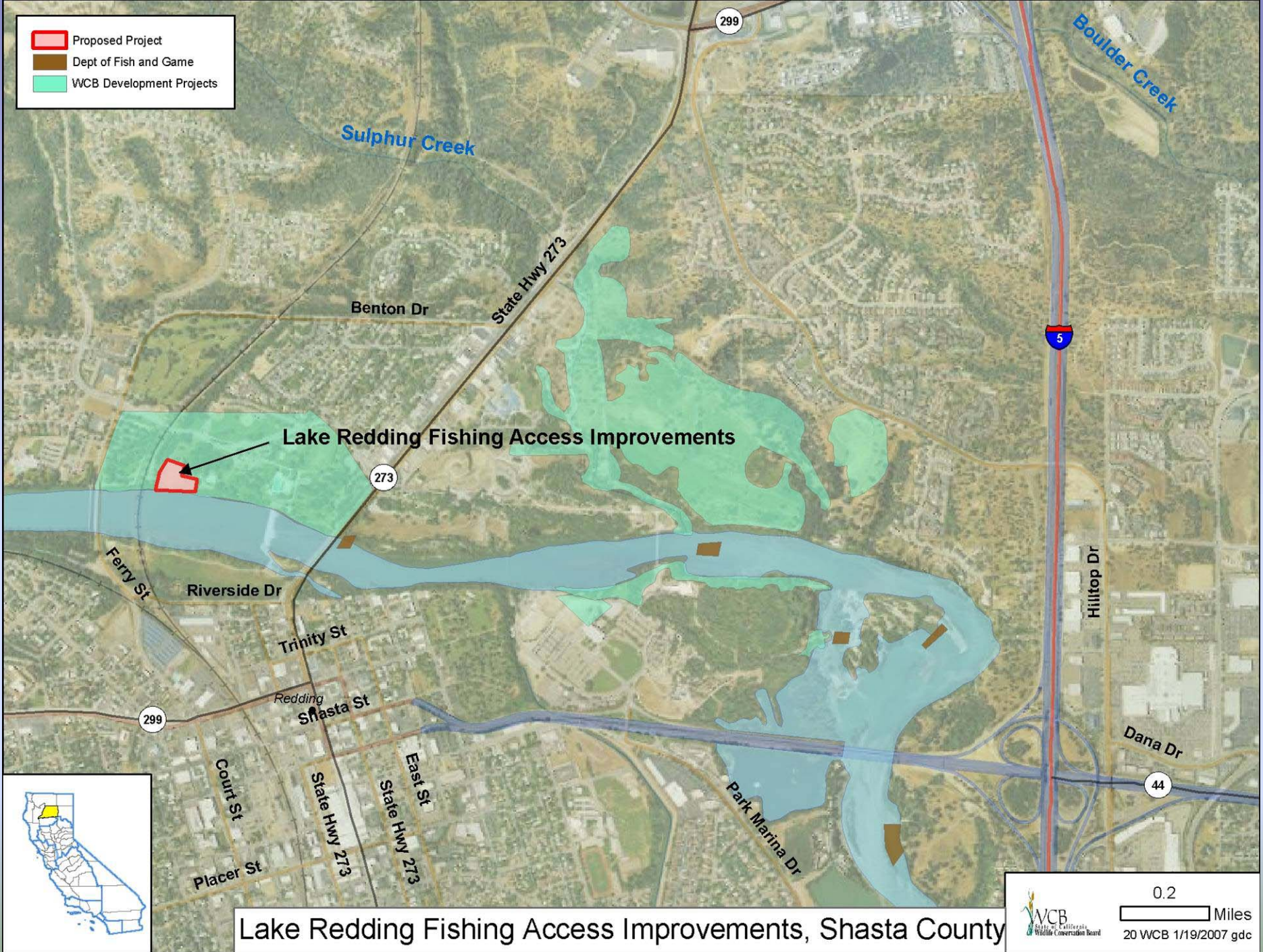
View from near center of property looking north to Old Samoa Road.

Mad River Slough Wildlife Area, Exp 1, Humboldt County

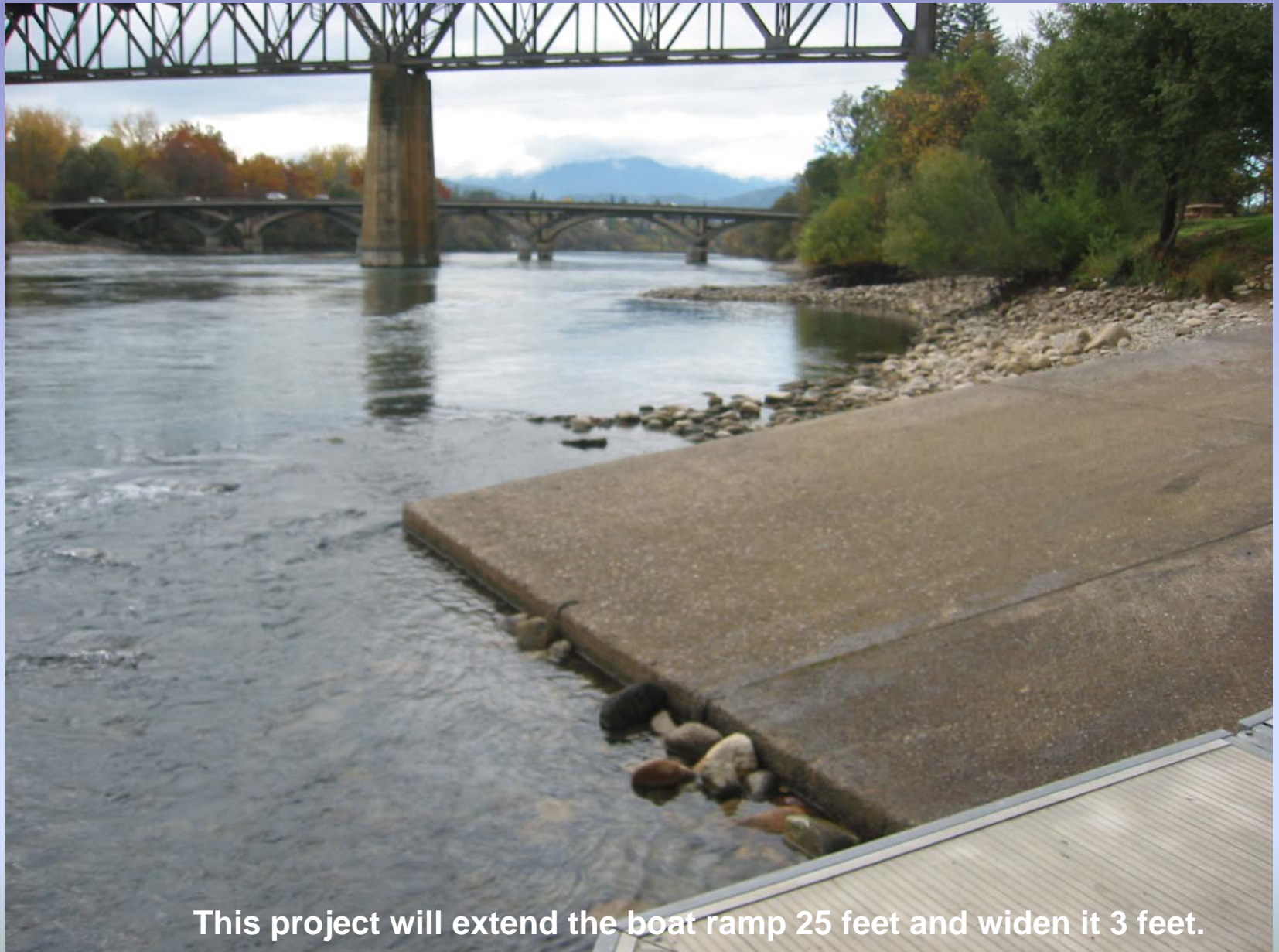


View from near center of property looking south to Humboldt Bay.

- Proposed Project
- Dept of Fish and Game
- WCB Development Projects



Lake Redding Fishing Access , Shasta County



This project will extend the boat ramp 25 feet and widen it 3 feet.

Lake Redding Fishing Access , Shasta County



Eight guide pylons for this boarding float will be replaced.

Malibu Creek State Park



Proposed Project



CA Dept of Parks and Recreation

Malibu Creek

Malibu Lagoon State Beach

Malibu Lagoon State Beach

1

Malibu Lagoon State Park,
Lagoon Restoration

Pacific Ocean

Malibu Lagoon State Park, Lagoon Restoration,
Los Angeles County



0.2
Miles

21 WCB 1/3/2007 gdc

Malibu Lagoon State Park Lagoon Restoration, Los Angeles County



Overhead aerial photo of Malibu Lagoon showing existing configuration

Malibu Lagoon State Park Lagoon Restoration, Los Angeles County



**Final Malibu Lagoon Restoration
and Enhancement Plan**

Existing Lagoon Conditions

**Figure
1**

Malibu Lagoon State Park Lagoon Restoration, Los Angeles County



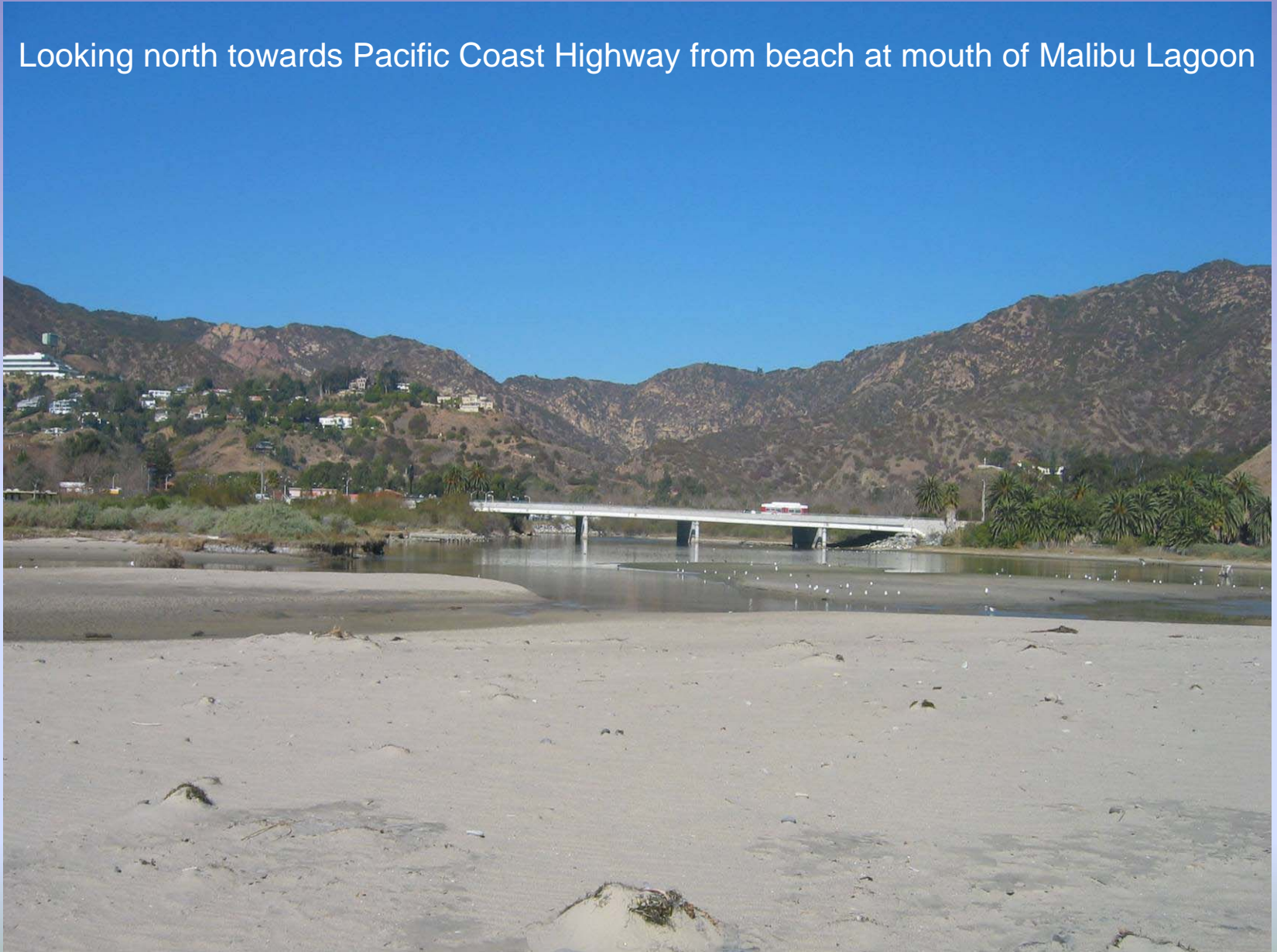
**Final Malibu Lagoon Restoration
and Enhancement Plan**

Perimeter Access Plan

**Figure
12**

Malibu Lagoon State Park Lagoon Restoration, Los Angeles County

Looking north towards Pacific Coast Highway from beach at mouth of Malibu Lagoon



Malibu Lagoon State Park Lagoon Restoration, Los Angeles County

LISTED SPECIES



Tidewater Goby



Southern California
Steelhead Trout

Malibu Lagoon State Park Lagoon Restoration, Los Angeles County

Brown pelicans and various seagulls at the beach edge of Malibu Lagoon



Malibu Lagoon State Park Lagoon Restoration, Los Angeles County

Looking west up Channel A from trail within the lagoon complex on State Park property.



Malibu Lagoon State Park Lagoon Restoration, Los Angeles County

Looking east from trail that crosses Channel A within lagoon complex.



Malibu Lagoon State Park Lagoon Restoration, Los Angeles County

Looking towards ocean and point where Channel C enters Malibu Lagoon.



Malibu Lagoon State Park Lagoon Restoration, Los Angeles County

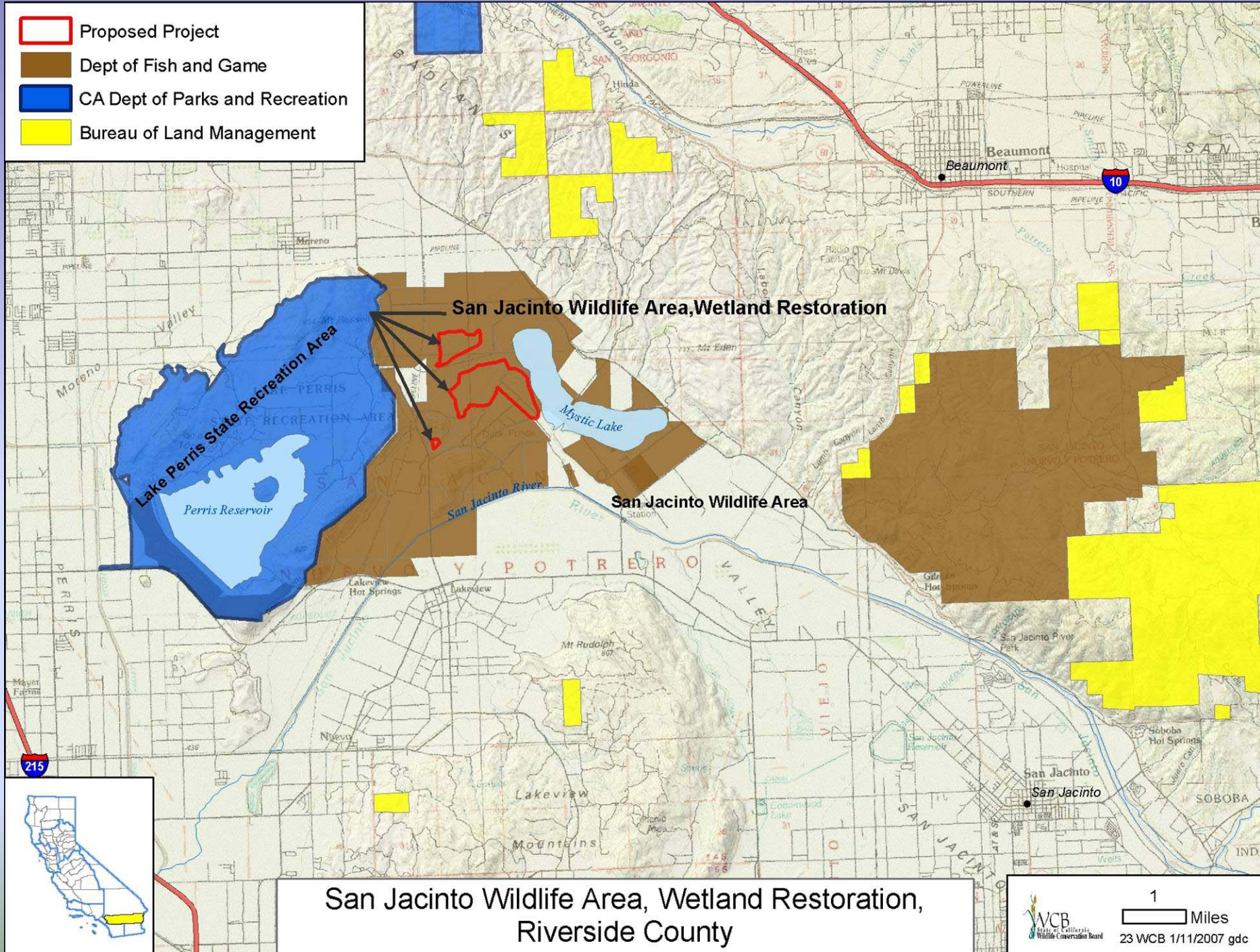


A marbled godwit relaxes on Malibu Lagoon beach.

22 Topanga State Park Rodeo Grounds Berm Removal and Restoration, Los Angeles County

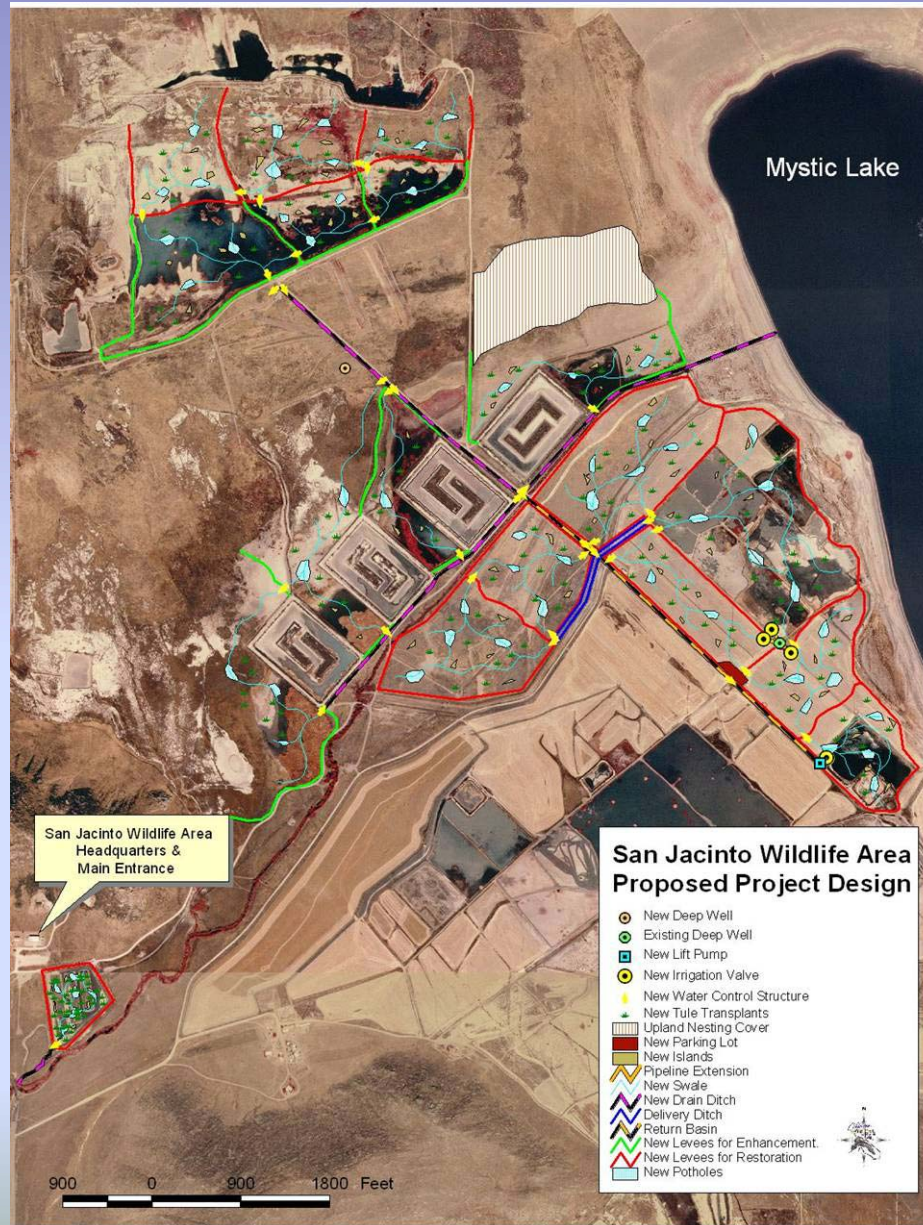
Project withdrawn from consideration at this time.

- Proposed Project
- Dept of Fish and Game
- CA Dept of Parks and Recreation
- Bureau of Land Management



**San Jacinto Wildlife Area, Wetland Restoration,
Riverside County**

San Jacinto Wildlife Area, Wetland Restoration, Riverside County



San Jacinto Wildlife Area, Wetland Restoration, Riverside County



Example of the abandoned agricultural land on the Wildlife Area to be restored to wetlands.

San Jacinto Wildlife Area, Wetland Restoration, Riverside County



WCB File Photo

Riparian habitat, restored on the Wildlife Area ten years earlier.

San Jacinto Wildlife Area, Wetland Restoration, Riverside County



Photo: Bob McLandress, CWA

Uplands and wetland borders on the Wildlife Area are rich in plant species and provide breeding habitat for many birds.

San Jacinto Wildlife Area, Wetland Restoration, Riverside County



Photo credit: Chadd Santerre

In fall, many water birds arrive to take advantage of the existing wetlands.

San Jacinto Wildlife Area, Wetland Restoration, Riverside County



Photo credit: Chadd Santerre

White faced ibis are common on the Wildlife Area all year.



Santa Cruz Island Habitat Enhancement, Santa Barbara County

Santa Cruz Island Habitat Enhancement , Santa Barbara County

The Nature Conservancy 
SAVING THE LAST GREAT PLACES ON EARTH

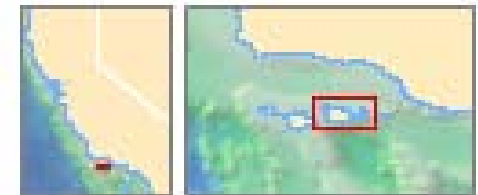
Santa Cruz Island
Map 2: Generalized Vegetation Communities



Vegetation Community	Acres
Herbaceous	26,110
Shrublands	20,359
Woodlands	6,196
Forest	407
Human Use	64

Owner
 The Nature Conservancy
 National Park Service
Other Features
 Watershed Boundaries
 Main Roads
 Secondary Roads
 Airstrip

Habitat data used by permission from National Park Service, USFS, and BLM, 2000.
The "Total acreage of this state is 15,687,000 acres." A more vegetation map will be available in February 2007.





Printed by David P. Smith, 05/04/07, Version 1.0/01/07, Printed, 05/04/07

Santa Cruz Island Habitat Enhancement , Santa Barbara County



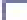



Invasives, for which local ones are available
(Source: Area of Interest for Invasive Plants)

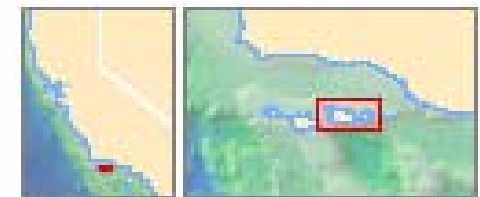
- | | |
|---|---|
|  Tamarisk (<i>Tamarix parviflora</i>) |  Italian Thistle (<i>Cirsium pinnatifidum</i>) |
|  Purple Grass (<i>Conyza bonariensis</i>) |  Italian Stone Pine (<i>Pinus pinea</i>) |
|  Mullein (<i>Verbascum thapsus</i>) |  Pisoni Hemlock (<i>Conium maculatum</i>) |
|  Silver-leaved Horse Nettle (<i>Solanum elaeagnifolium</i>) |  Hoary Ceanothus (<i>Ceanothus ciliatus</i>) |
|  Peruvian Pepper Tree (<i>Schinus molle</i>) |  Australian Fireweed (<i>Erechtia glomerata</i>) |
|  Red Valerian (<i>Centranthus ruber</i>) | |
|  Riparian Weeds: Includes <i>Vincetoxicum</i> , <i>Hedera</i> sp., <i>Eucalyptus</i> , <i>Albizia julibrissin</i> , and <i>Pennisetum clandestinum</i> | |

Owner

-  The Nature Conservancy
-  National Park Service

Other Features

-  Watershed Boundaries
-  Main Roads
-  Secondary Roads
-  Airfields



Map data collected & compiled by Ken Olson, 2008,
with Dr. Coleen Cory and Brian Cohen, 2008

Model 1: Final Project 1/11/11 of 101: Island 1/11/11 101: Invasive Plants page 11 of 11

Santa Cruz Island Habitat Enhancement , Santa Barbara County



Photo credit: TNC

The island was very heavily grazed for decades. In the 1980s and 1990s, all sheep and cattle were removed.

Santa Cruz Island Habitat Enhancement , Santa Barbara County



Photo credit: TNC

Feral pigs, the last non-native mammal on the island, have been entirely eliminated from Santa Cruz Island.

Santa Cruz Island Habitat Enhancement , Santa Barbara County



WCB Staff Photo

The spread of non-native Eucalyptus trees and fennel, in foreground, will be controlled. Structures are cages for the continuing captive breeding program for Island foxes.

Santa Cruz Island Habitat Enhancement , Santa Barbara County



The broad central valley on the Island. Notice the stark line between the relatively natural native shrubs on the left and the valley below, which was cleared many decades ago, cultivated to grapes and other crops and now is dominated by non-native grasses and fennel.

Santa Cruz Island Habitat Enhancement , Santa Barbara County



WCB Staff Photo

Experimental plantings conducted over the last 15 years in areas that have been fenced to keep out non-native herbivores help to guide the restoration efforts.

Santa Cruz Island Habitat Enhancement , Santa Barbara County



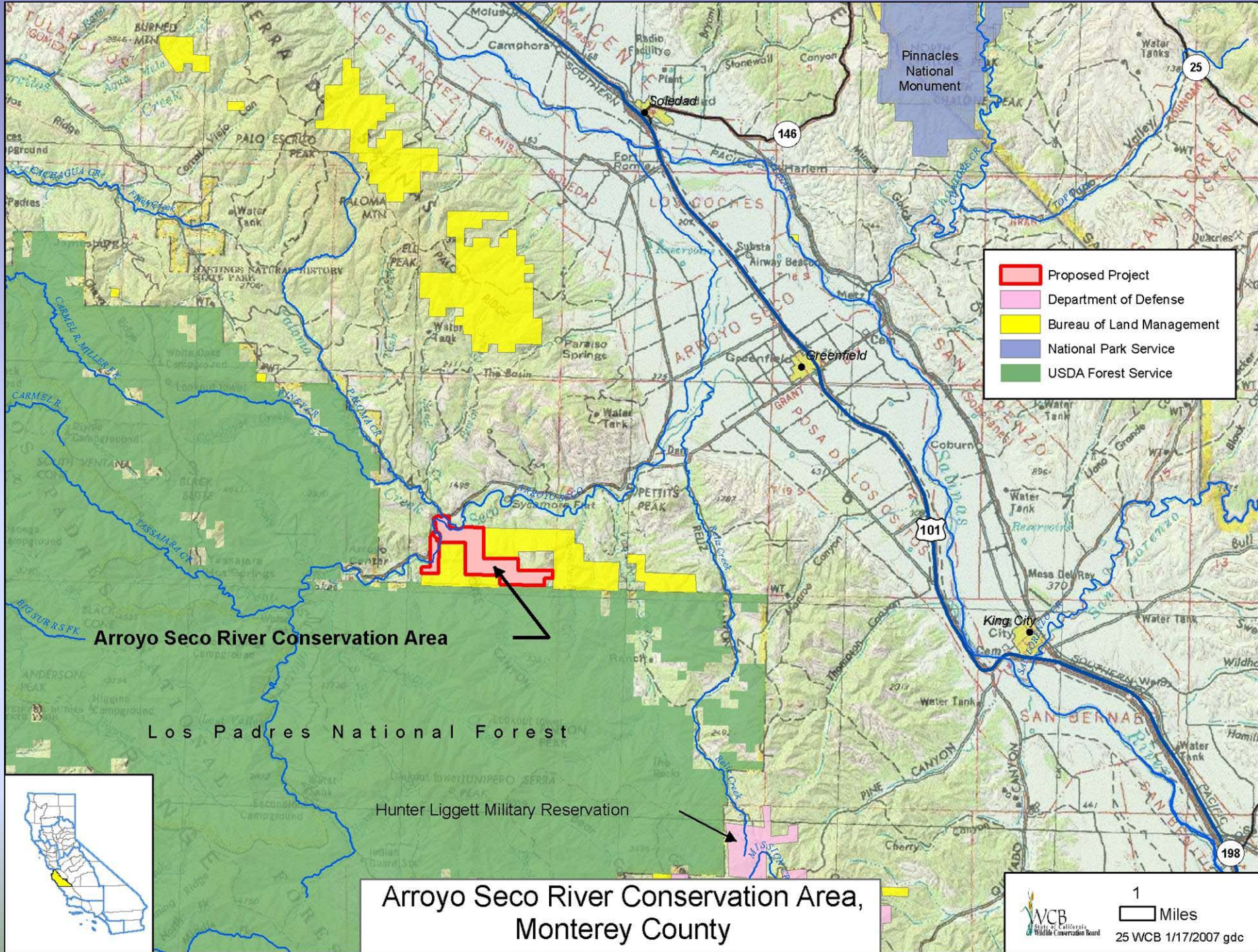
Photo credit: Institute for Wildlife Studies

Golden eagles first appeared on the island in the 1990s. Here, an eaglet waits in a nest for food. Notice remains of at least four foxes, three with tracking collars.

Santa Cruz Island Habitat Enhancement , Santa Barbara County



Some of the indigenous species of the Island include the Hoffmann's rock cress, Island scrub jay and the Santa Cruz Island fox.



- Proposed Project
- Department of Defense
- Bureau of Land Management
- National Park Service
- USDA Forest Service

Arroyo Seco River Conservation Area

Los Padres National Forest

Hunter Liggett Military Reservation

Arroyo Seco River Conservation Area,
Monterey County



1 Miles
25 WCB 1/17/2007 gdc

Arroyo Seco River Conservation Easement



Arroyo Seco river – subject on right.

Arroyo Seco River Conservation Easement



View of ranch looking west towards Ventana Wilderness.

Arroyo Seco River Conservation Easement



Arroyo Seco River Conservation Easement



View of ranch looking west.

Arroyo Seco River Conservation Easement

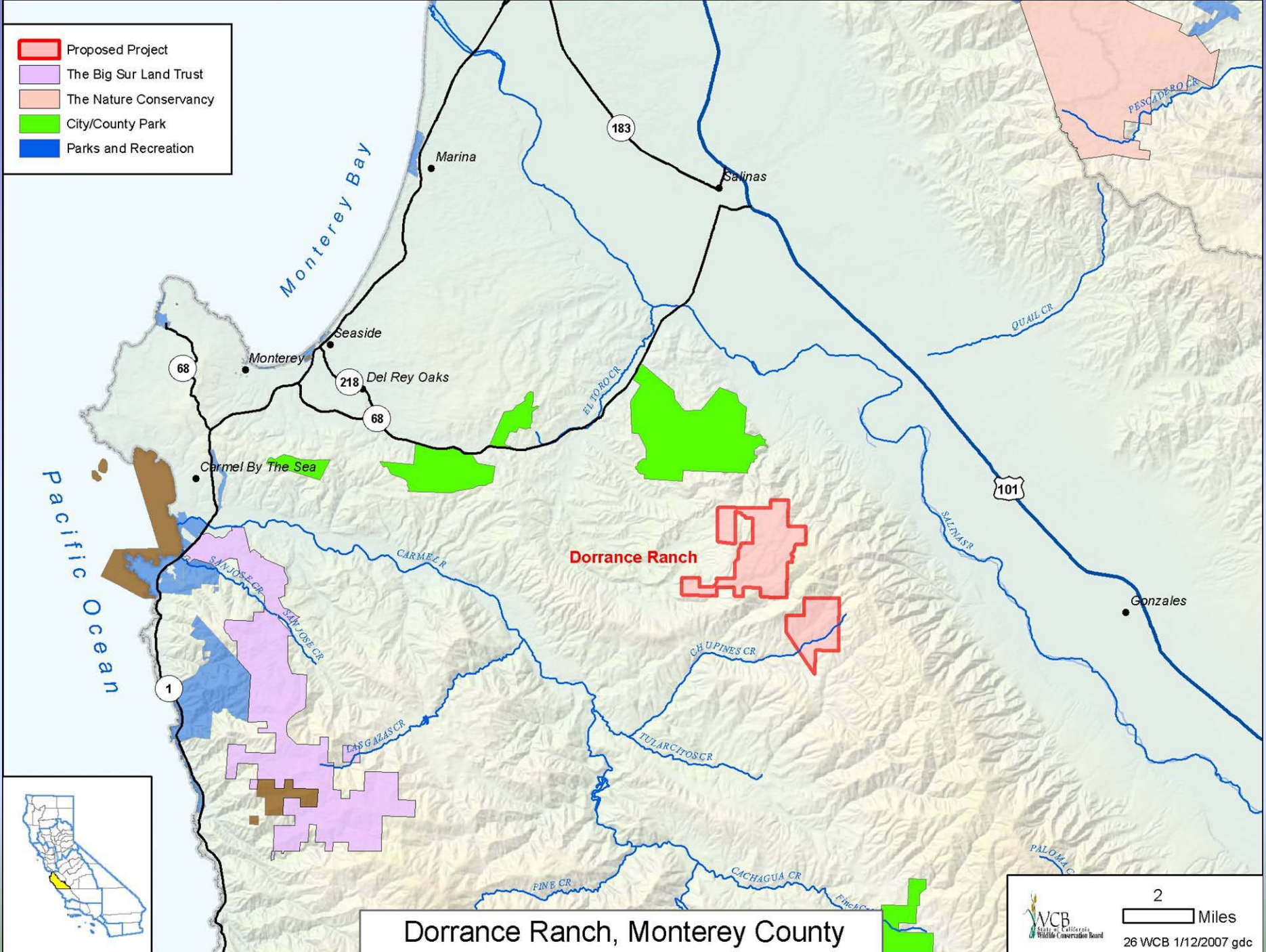


Aerial view looking east. River near center of picture. Subject on right.

Arroyo Seco River Conservation Easement



View of Horse Canyon Creek.



Dorrance Ranch, Monterey County

Dorrance Ranch, Monterey County



Lightning Storm on Ridge of Dorrance Ranch (Copyrighted by Suzanne W. Dorrance)

Dorrance Ranch, Monterey County



Dorrance Ranch, Monterey County



Elkhorn Slough Ecological Reserve, Expansion 11



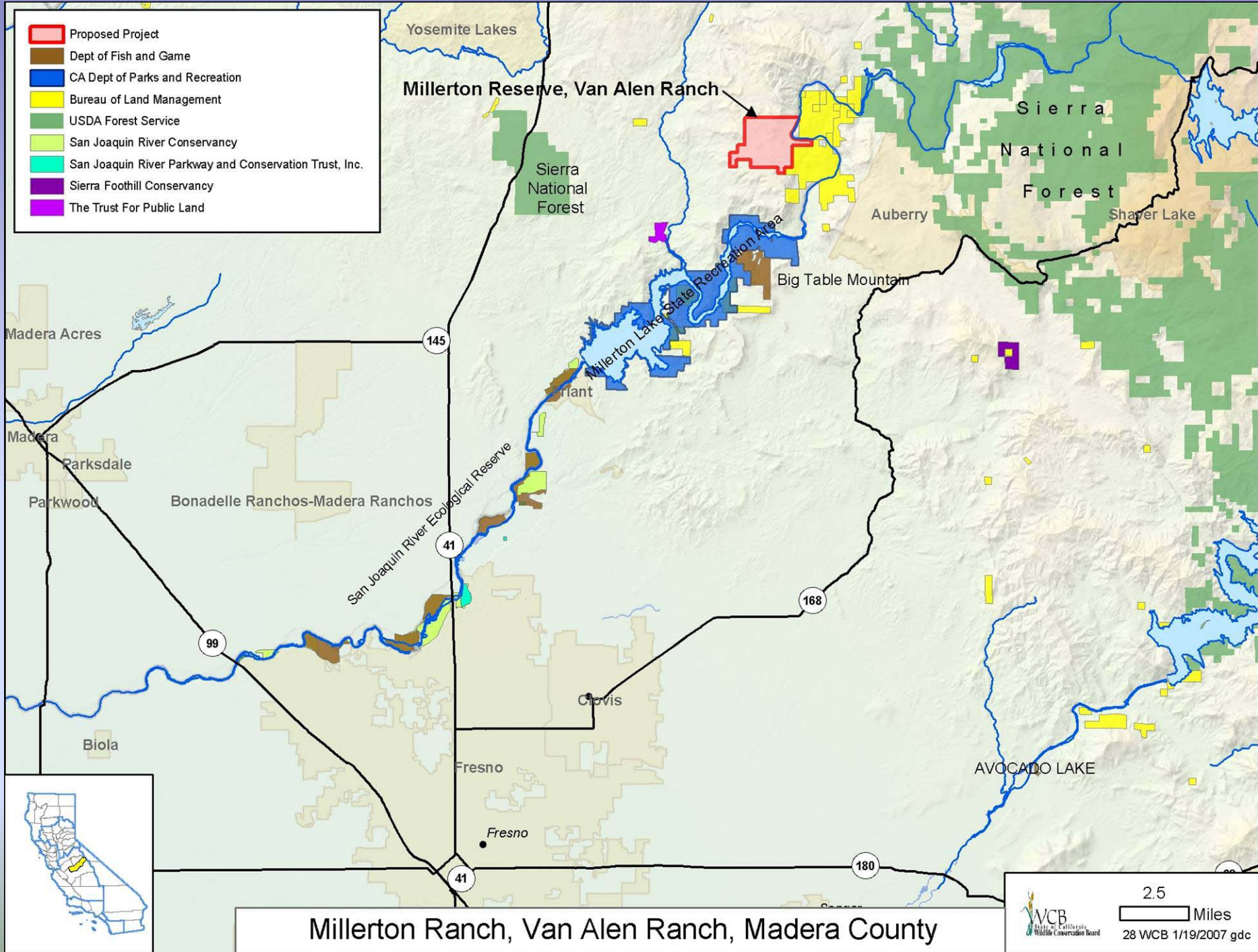
Woodland uplands found on the property

Elkhorn Slough Ecological Reserve, Expansion 11



Woodland uplands found on the property

- Proposed Project
- Dept of Fish and Game
- CA Dept of Parks and Recreation
- Bureau of Land Management
- USDA Forest Service
- San Joaquin River Conservancy
- San Joaquin River Parkway and Conservation Trust, Inc.
- Sierra Foothill Conservancy
- The Trust For Public Land



Millerton Ranch, Van Alen Ranch, Madera County

Millerton Reserve, Van Allen Ranch Oak Woodland Project



View of largest pond on property looking west.

Millerton Reserve, Van Allen Ranch Oak Woodland Project



Typical oak woodlands and rangeland taken just easterly of above pond.

Millerton Reserve, Van Allen Ranch Oak Woodland Project



View of rangeland looking north from near center of property.

Millerton Reserve, Van Allen Ranch Oak Woodland Project



Typical oak woodlands and rangeland looking north from near easterly boundary line.

Millerton Reserve, Van Allen Ranch Oak Woodland Project



View looking north from near center of property – “Hideaway Ranch buildings” location. In center, one of three large ponds on property.

Millerton Reserve, Van Allen Ranch Oak Woodland Project



Ranch road viewed looking northwest. Typical oak woodlands and rangeland.

Millerton Reserve, Van Allen Ranch Oak Woodland Project



View of easterly portion of property – San Joaquin River on view on right side of photo.

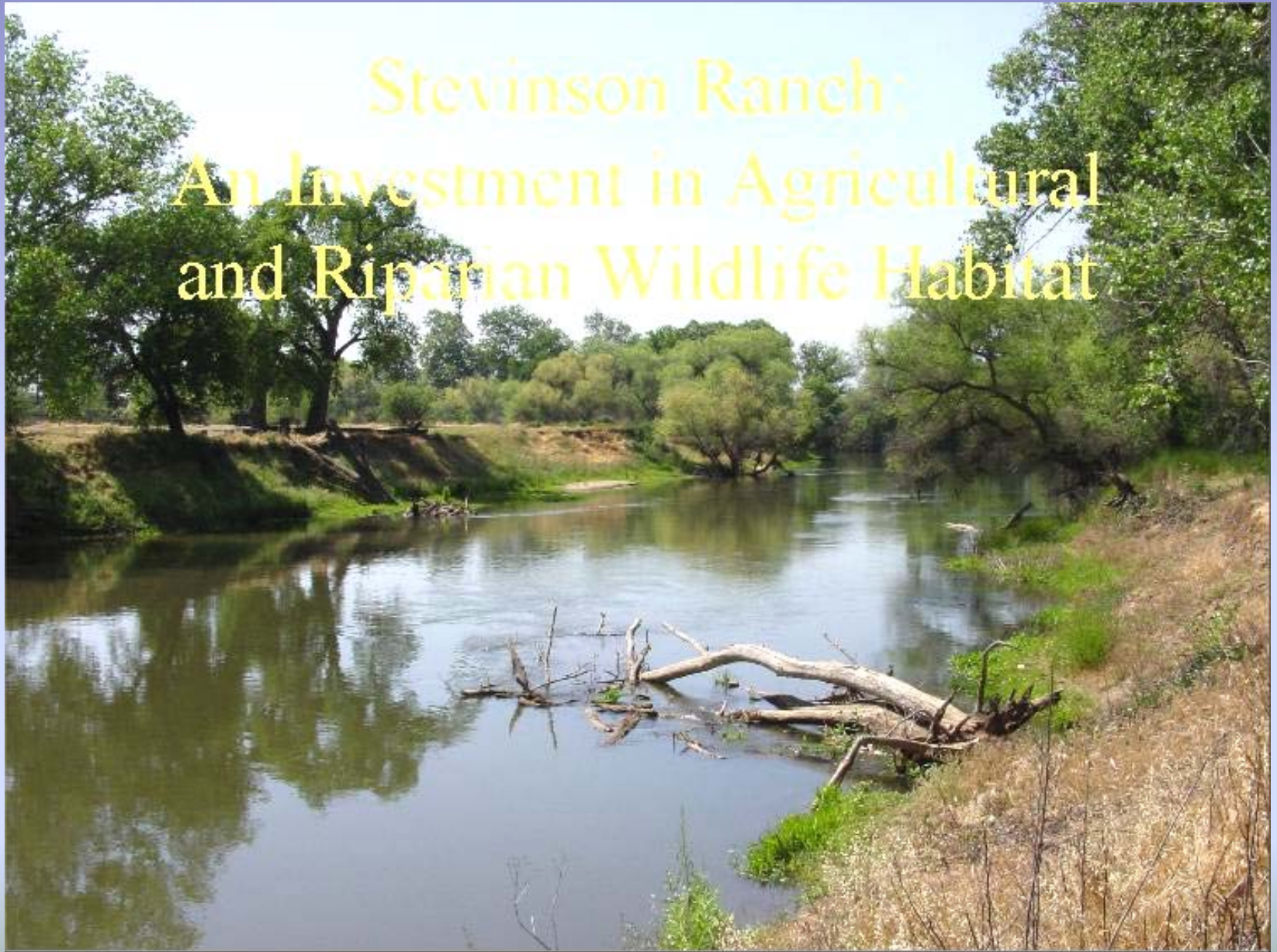
Millerton Reserve, Van Allen Ranch Oak Woodland Project



View of Federal Aviation Administration facilities on (leased land) located on the westerly boundary of the property and a view of the “basalt flow” vernal pool habitat in foreground.

Grasslands Conservation Area, Expansion 1

Stevinson Ranch: An Investment in Agricultural and Riparian Wildlife Habitat



Grasslands Conservation Area, Expansion 1



Grasslands Conservation Area, Expansion 1

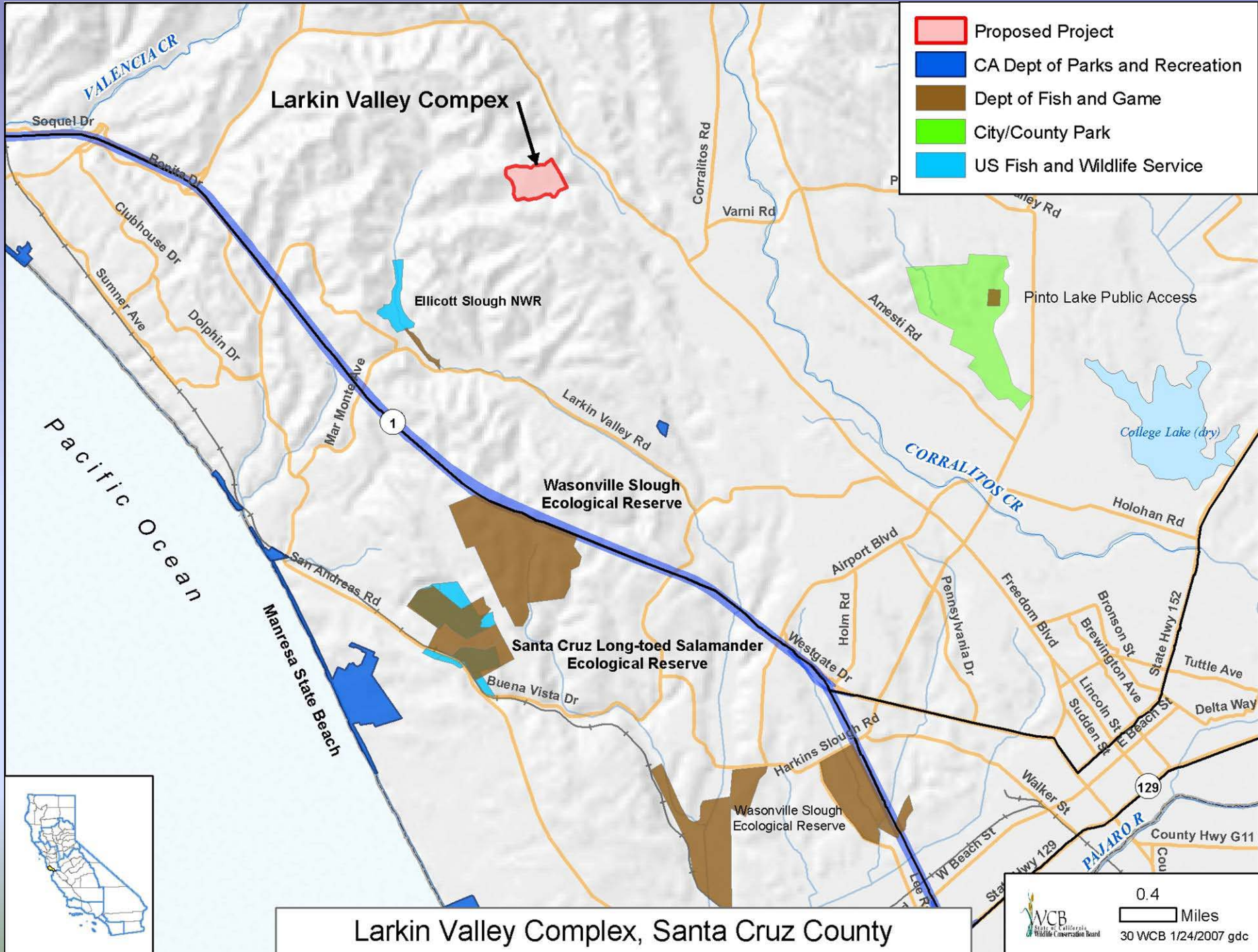
Riparian / Native Pasture



Grasslands Conservation Area, Expansion 1

Wildlife-compatible Farming





Larkin Valley Complex, Santa Cruz County

Larkin Valley Complex, Santa Cruz County



Santa Cruz long-toed salamander



Red legged frog

Larkin Valley Complex, Santa Cruz County



Looking West at Salamander Breeding Pond

Larkin Valley Complex, Santa Cruz County

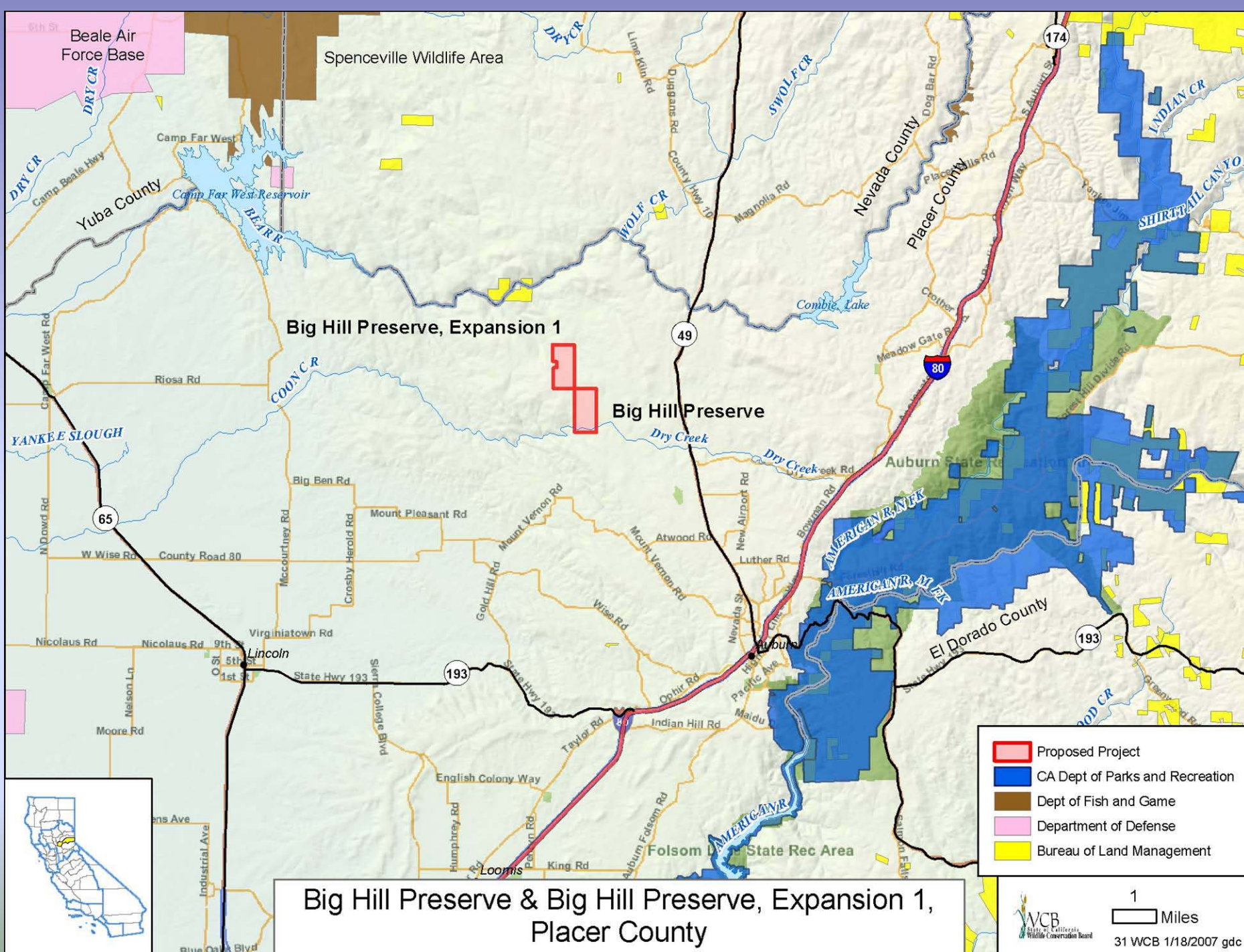


Looking east through oak woodlands
near the Salamander Breeding Pond
towards the Coastal Terrace Prairie

Larkin Valley Complex, Santa Cruz County



View from mid-elevation of property, on the edge of the oak woodlands



Big Hill Preserve and Expansion 1 , Placer County



Big Hill Preserve and Expansion 1 , Placer County



Big Hill Preserve and Expansion 1 , Placer County



Big Hill Preserve and Expansion 1 , Placer County







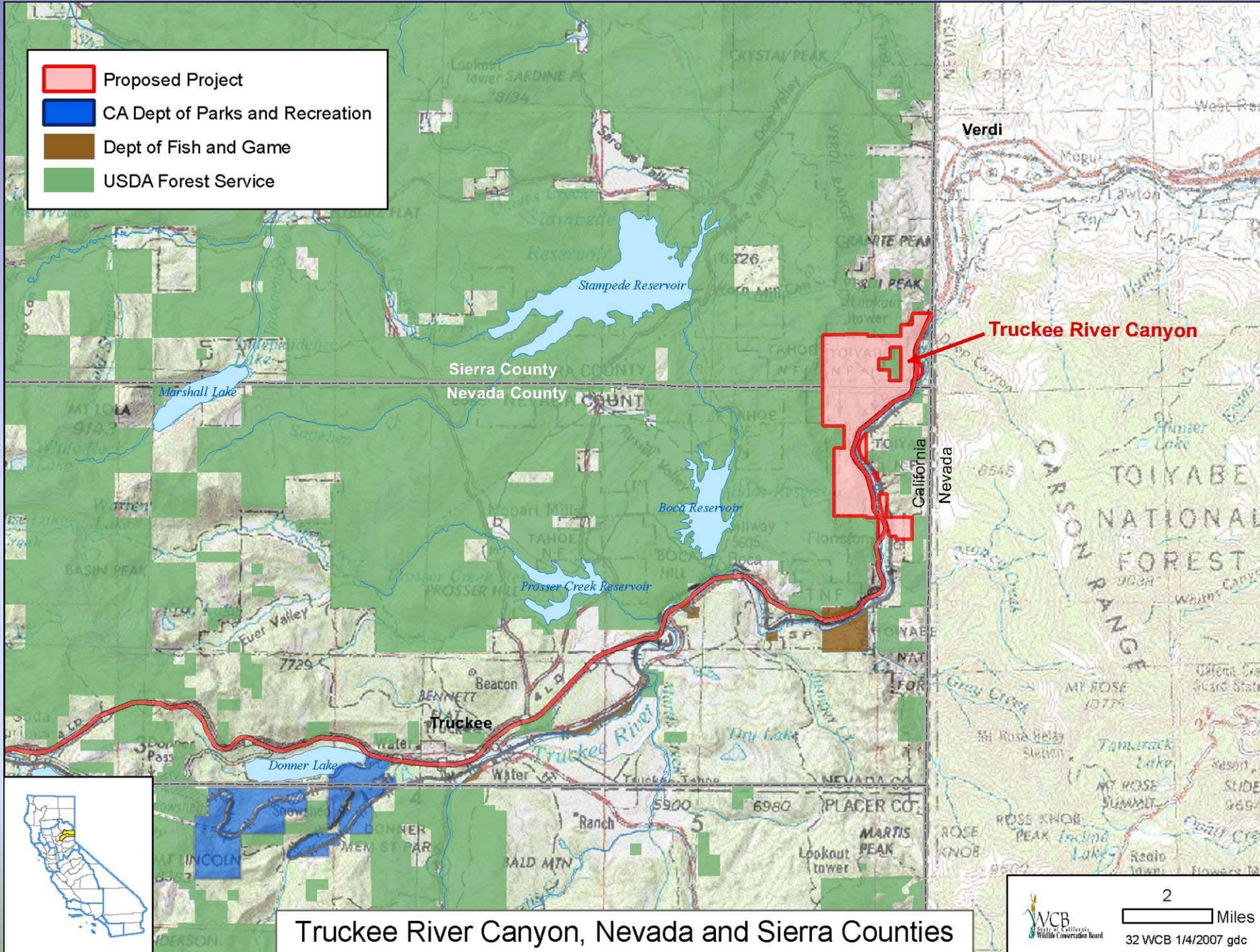
Big Hill Preserve and Expansion 1 , Placer County



Big Hill Preserve and Expansion 1 , Placer County



-  Proposed Project
-  CA Dept of Parks and Recreation
-  Dept of Fish and Game
-  USDA Forest Service



Truckee River Canyon, Nevada and Sierra Counties



South by Southwest View from Western Ridge of Uplands

Truckee River Canyon, Nevada and Sierra Counties

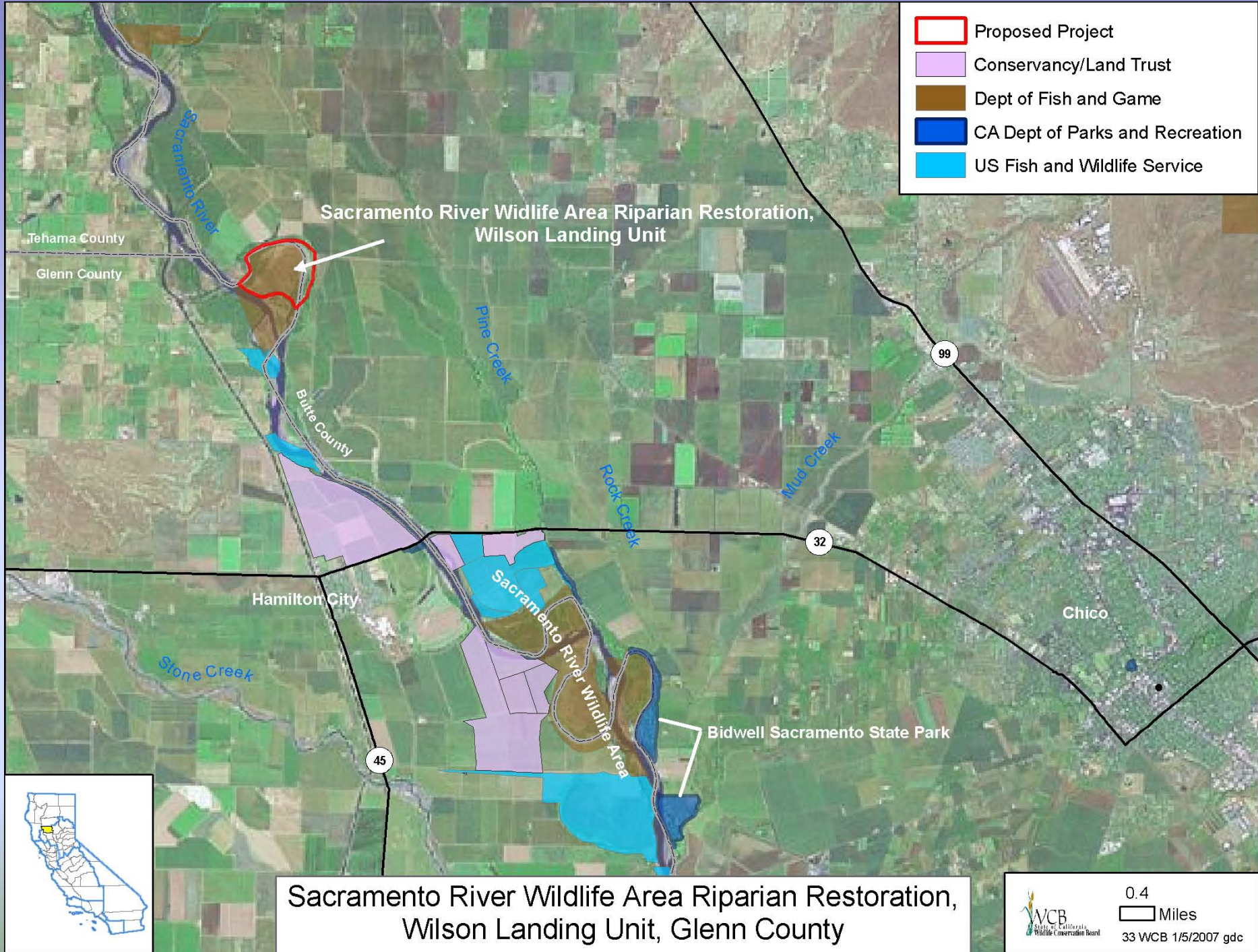







Uplands Meadow

Truckee River Canyon, Nevada and Sierra Counties



North by Northwest View of Uplands from Truckee River



-  Proposed Project
-  Conservancy/Land Trust
-  Dept of Fish and Game
-  CA Dept of Parks and Recreation
-  US Fish and Wildlife Service

Sacramento River Wildlife Area Riparian Restoration,
Wilson Landing Unit

Hamilton City

Chico

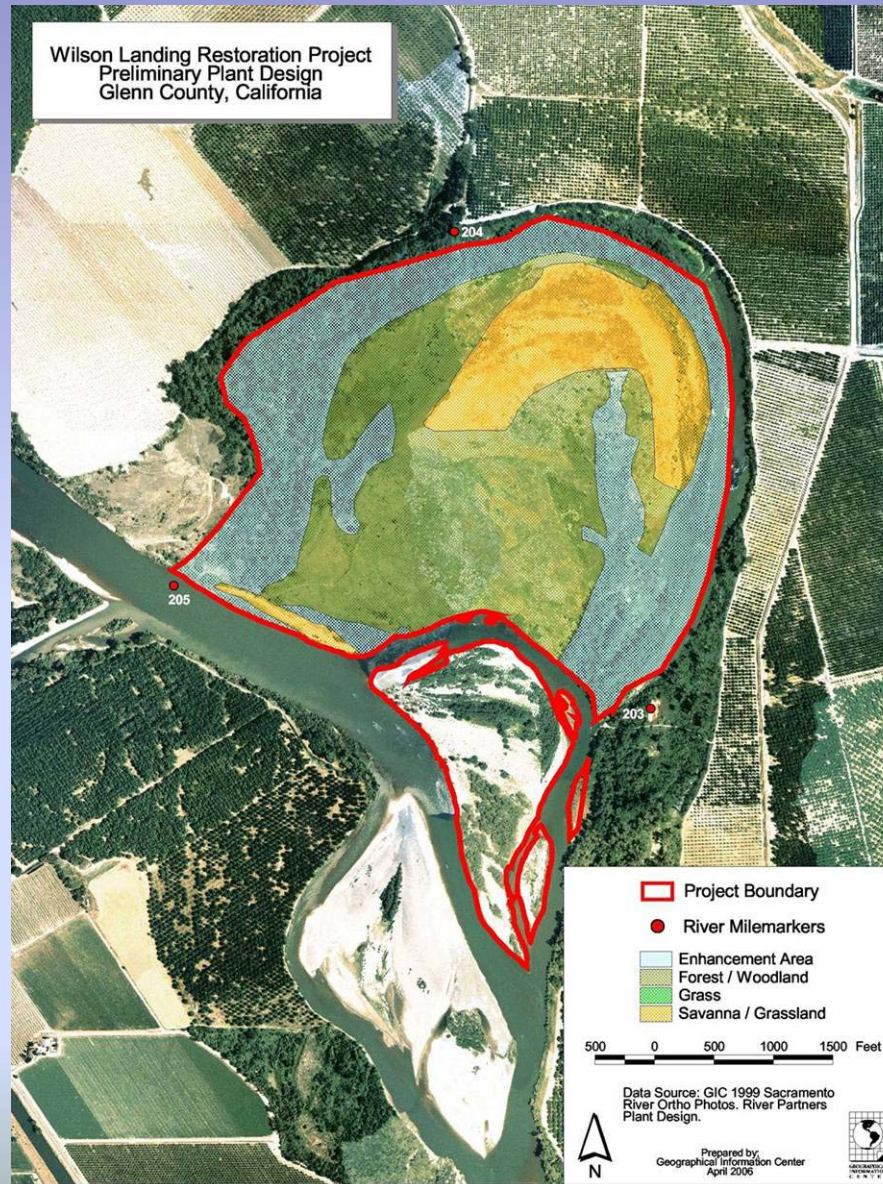
Bidwell Sacramento State Park

Sacramento River Wildlife Area Riparian Restoration,
Wilson Landing Unit, Glenn County



0.4
Miles
33 WCB 1/5/2007 gdc

Sacramento River Wildlife Area Riparian Restoration, Wilson Landing Unit, Glenn County



Sacramento River Wildlife Area Riparian Restoration, Wilson Landing Unit, Glenn County



Pepperweed (*Lepidium latifolium*) monocultures occupy small areas of the site.

Sacramento River Wildlife Area Riparian Restoration, Wilson Landing Unit, Glenn County



Roads are apparent from unauthorized motorized use.

Sacramento River Wildlife Area Riparian Restoration, Wilson Landing Unit, Glenn County



Yellow star thistle (*Centaurea solstitialis*) dominates the higher areas of the site with good soils.

Sacramento River Wildlife Area Riparian Restoration, Wilson Landing Unit, Glenn County



Another weed with poor wildlife value, arundo (*Arundo donax*), will be a target of weed control.

Sacramento River Wildlife Area Riparian Restoration, Wilson Landing Unit, Glenn County



The oxbow lake on site is an important habitat feature that will be improved with the riparian planting.

Sacramento River Wildlife Area Riparian Restoration, Wilson Landing Unit, Glenn County



Duck, deer, raccoon, and coyote tracks in existing habitat along the river suggest that a restored site will be a biological hotspot for wildlife.