

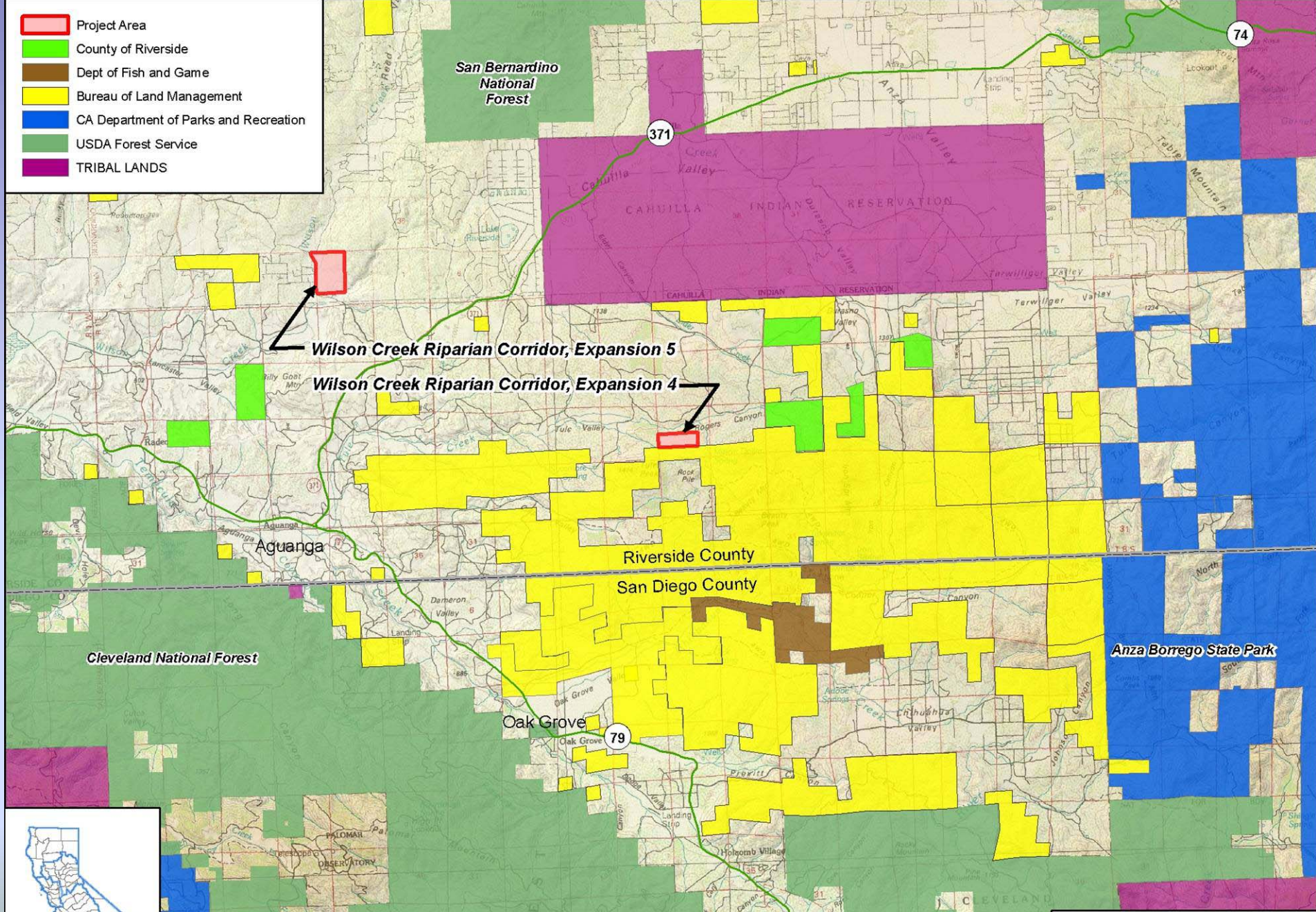
Mt Shasta, Shasta County

May 24, 2007 WCB Board Meeting
State Capitol, Room 113
Sacramento, California 95814



Photo by G Cantrell, April 2007

-  Project Area
-  County of Riverside
-  Dept of Fish and Game
-  Bureau of Land Management
-  CA Department of Parks and Recreation
-  USDA Forest Service
-  TRIBAL LANDS



Wilson Creek Riparian Corridor, Expansions 4 & 5,
Riverside County

07 Wilson Creek Riparian Corridor, Expansions 4 and 5



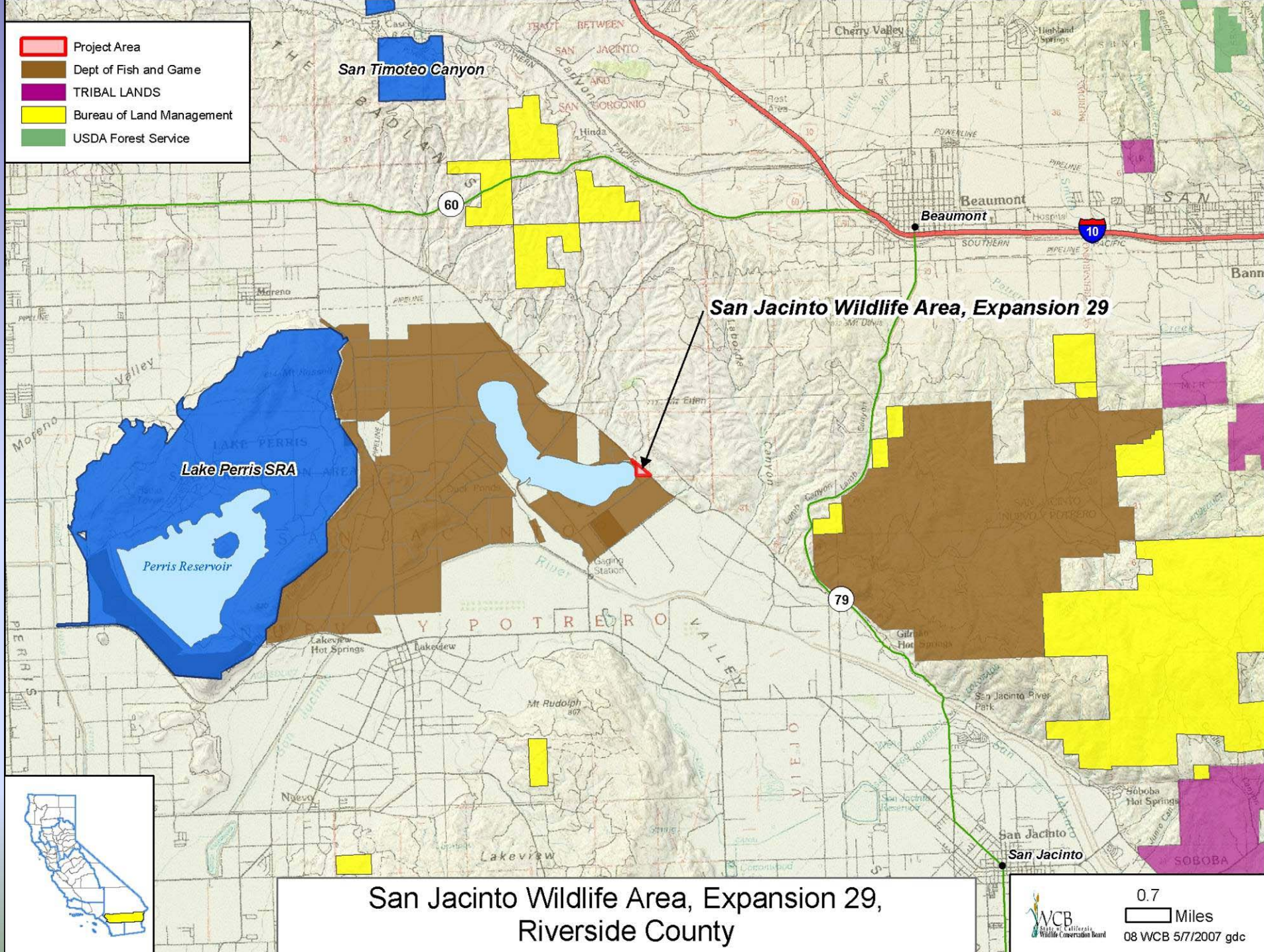
07 Wilson Creek Riparian Corridor, Expansions 4 and 5



07 Wilson Creek Riparian Corridor, Expansions 4 and 5



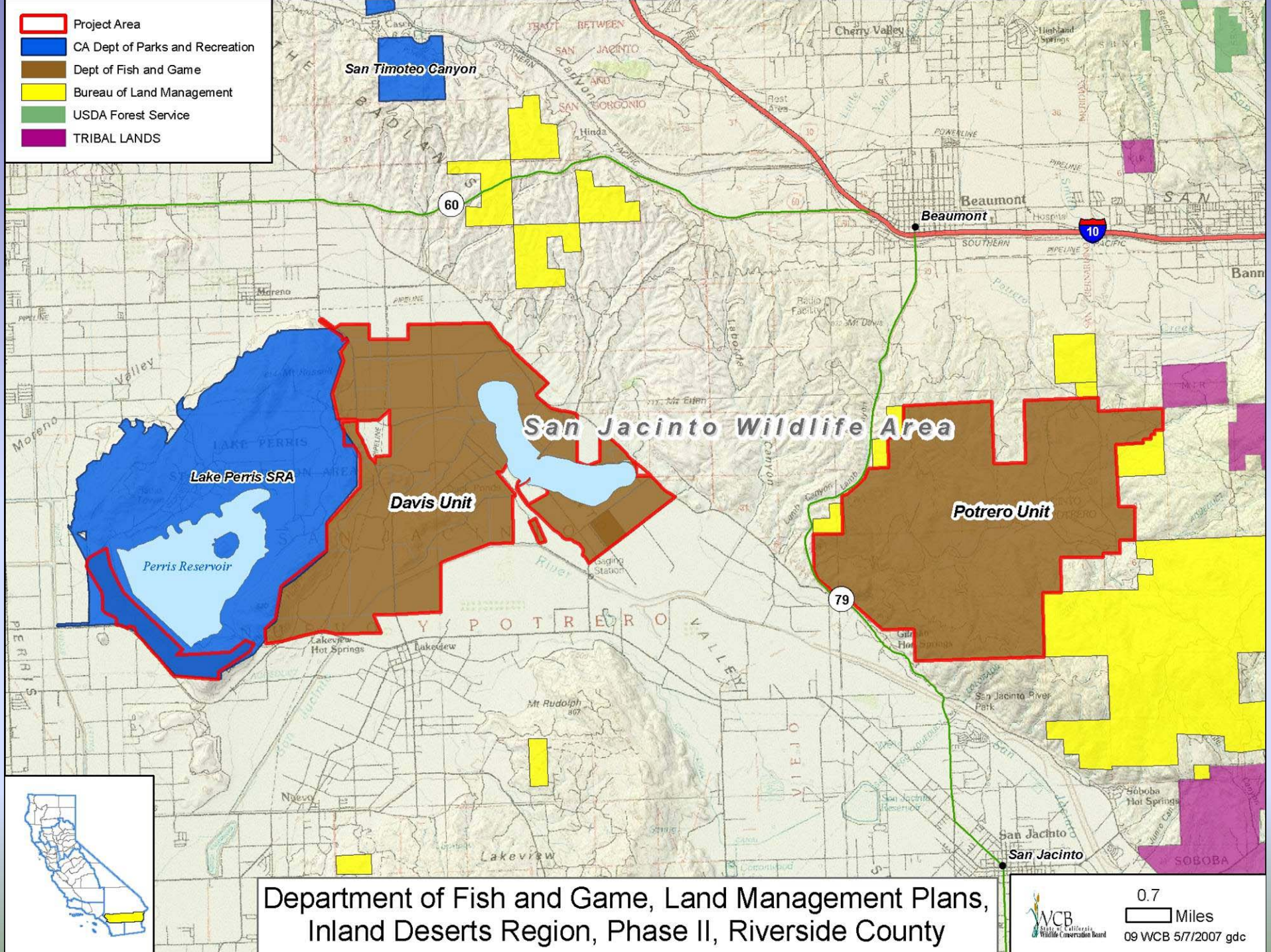
-  Project Area
-  Dept of Fish and Game
-  TRIBAL LANDS
-  Bureau of Land Management
-  USDA Forest Service



08 San Jacinto Wildlife Area, Expansion 29, Riverside County



-  Project Area
-  CA Dept of Parks and Recreation
-  Dept of Fish and Game
-  Bureau of Land Management
-  USDA Forest Service
-  TRIBAL LANDS



Department of Fish and Game, Land Management Plans,
Inland Deserts Region, Phase II, Riverside County

9 DFG Land Management Plans, Inland Deserts Region, Phase II



White-faced ibis coming into wetland

9 DFG Land Management Plans, Inland Deserts Region, Phase II



Desert wetlands attract a wide diversity of wildlife.

9 DFG Land Management Plans, Inland Deserts Region, Phase II



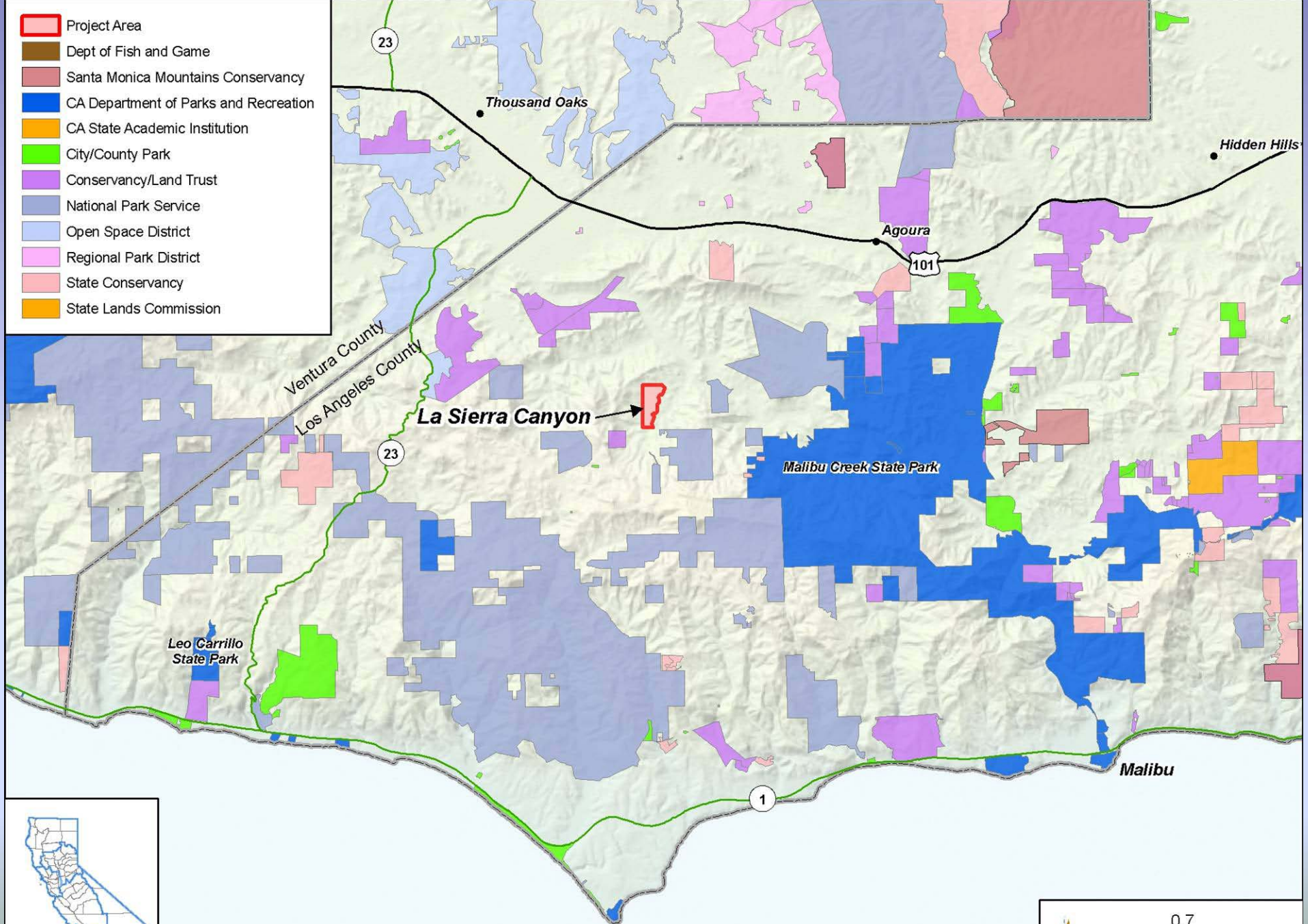
Riparian restoration project

9 DFG Land Management Plans, Inland Deserts Region, Phase II



Spring bloom at San Jacinto

- Project Area
- Dept of Fish and Game
- Santa Monica Mountains Conservancy
- CA Department of Parks and Recreation
- CA State Academic Institution
- City/County Park
- Conservancy/Land Trust
- National Park Service
- Open Space District
- Regional Park District
- State Conservancy
- State Lands Commission



La Sierra Canyon, Los Angeles County



0.7
Miles
10 WCB 5/7/2007 gdc

10 La Sierra Canyon, Los Angeles County



View from the western boundary looking east across the northern portion of the site.

10 La Sierra Canyon, Los Angeles County



View from the western boundary looking east across the southern portion of the site.

10 La Sierra Canyon, Los Angeles County



View from the eastern boundary looking west across the northern portion of the site.

10 La Sierra Canyon, Los Angeles County



View from the eastern boundary looking west across the southern portion of the site.

10 La Sierra Canyon, Los Angeles County

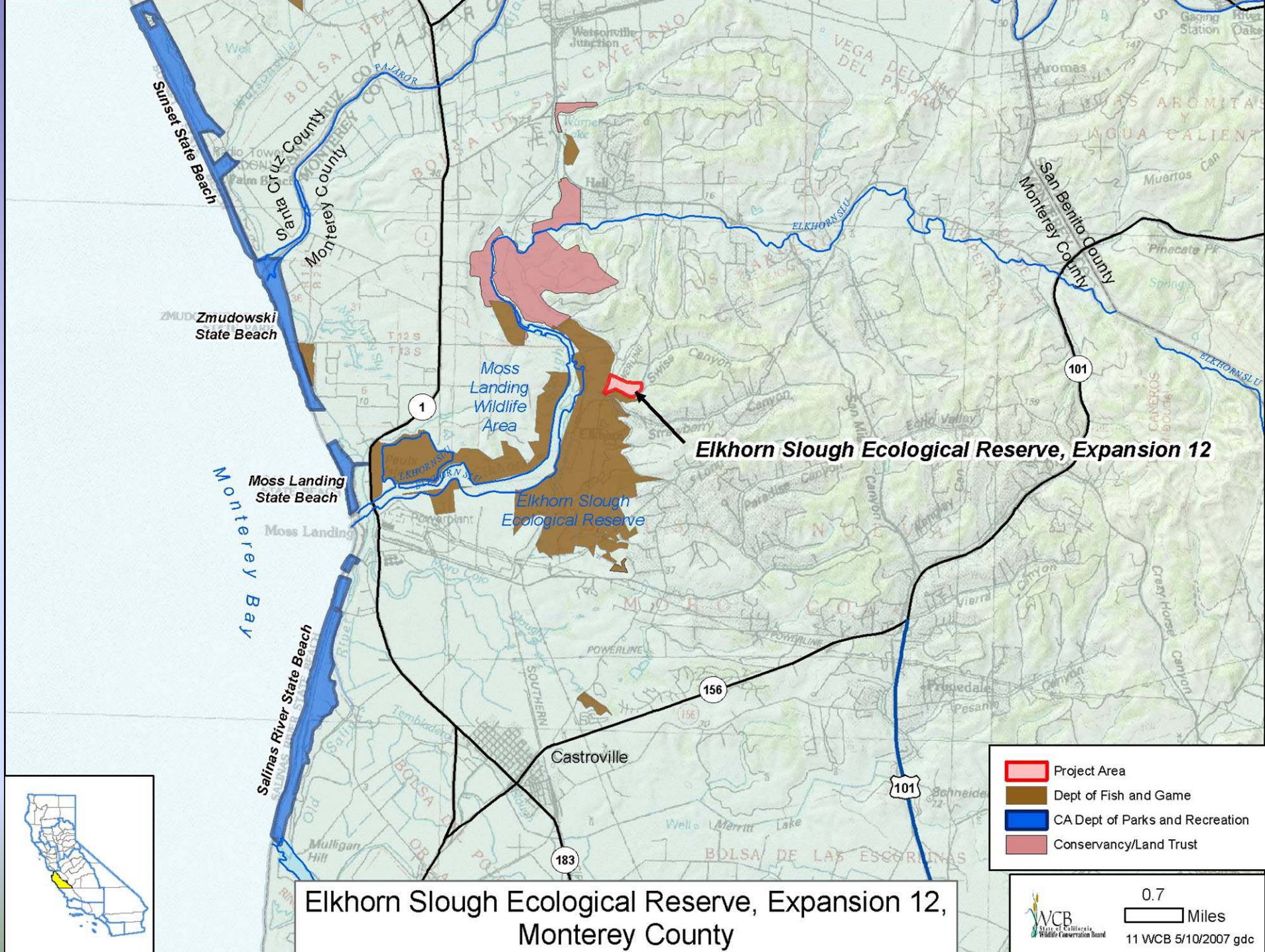


Panorama looking west over the site.

10 La Sierra Canyon, Los Angeles County



View from the southern boundary looking north across the site.



11 Elkhorn Slough Ecological Reserve, Expansion 12



View of property adjoining slough wetlands

11 Elkhorn Slough Ecological Reserve, Expansion 12



Vegetation found on subject property

11 Elkhorn Slough Ecological Reserve, Expansion 12



Stand of oaks found on property

Withdrawn from consideration at this time.

13 San Joaquin River Parkway, Ball Ranch Site Enhancement



Demolish uninhabitable house

13 San Joaquin River Parkway, Ball Ranch Site Enhancement



Demolish unsafe barn and remove concrete debris

13 San Joaquin River Parkway, Ball Ranch Site Enhancement



Demolish outbuilding






13 San Joaquin River Parkway, Ball Ranch Site Enhancement

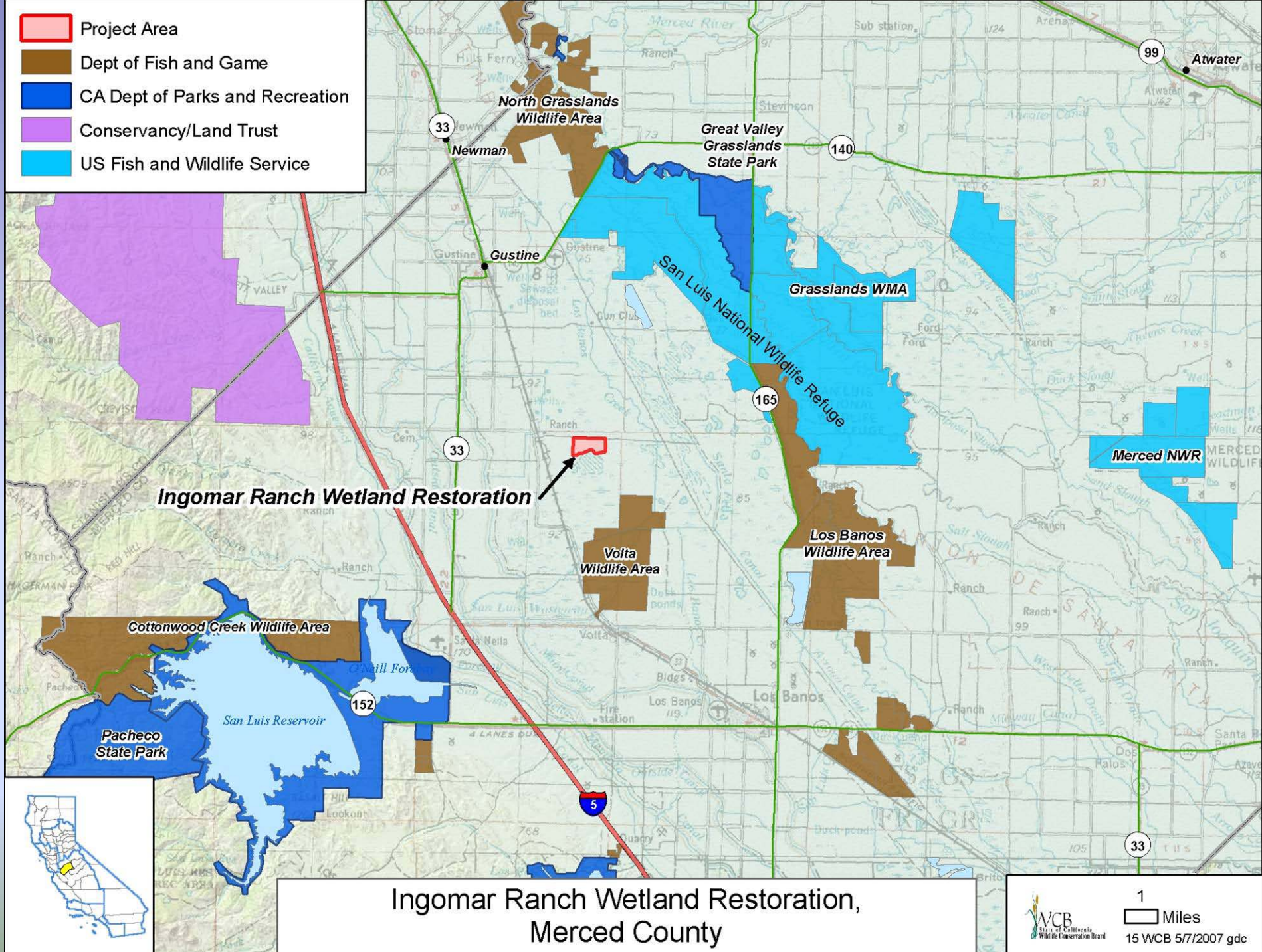


Remove debris

14 San Joaquin River Parkway, Lost Lake Regional Park Mater Plan, Fresno County

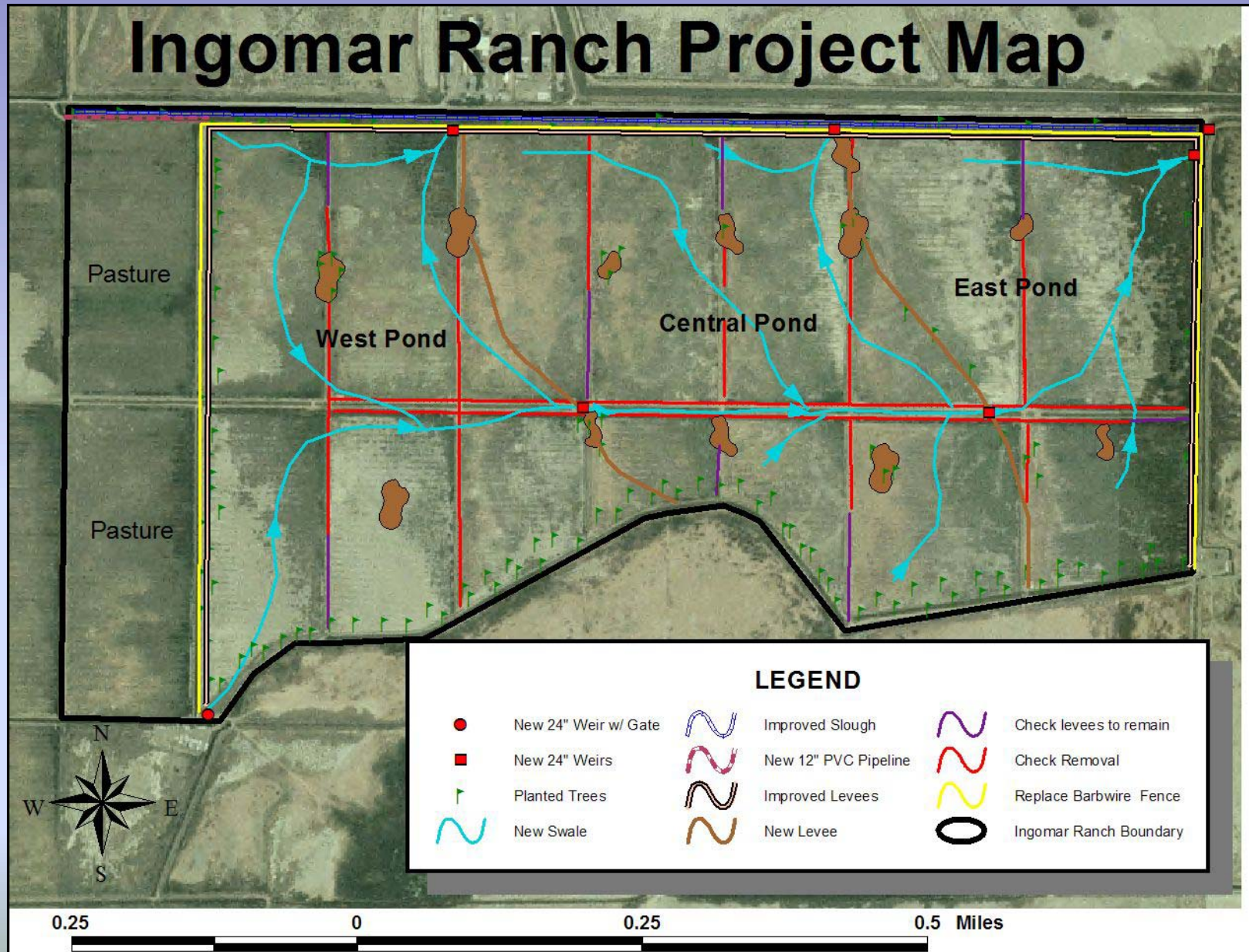


-  Project Area
-  Dept of Fish and Game
-  CA Dept of Parks and Recreation
-  Conservancy/Land Trust
-  US Fish and Wildlife Service



15 Ingomar Ranch Wetland Restoration, Merced County

Ingomar Ranch Project Map



15 Ingomar Ranch Wetland Restoration, Merced County



Lowest part of the property cannot be properly drained.

15 Ingomar Ranch Wetland Restoration, Merced County



Existing pasture is too wet to provide good cattle forage and does not have the infrastructure to be managed well as a wetland.

15 Ingomar Ranch Wetland Restoration, Merced County



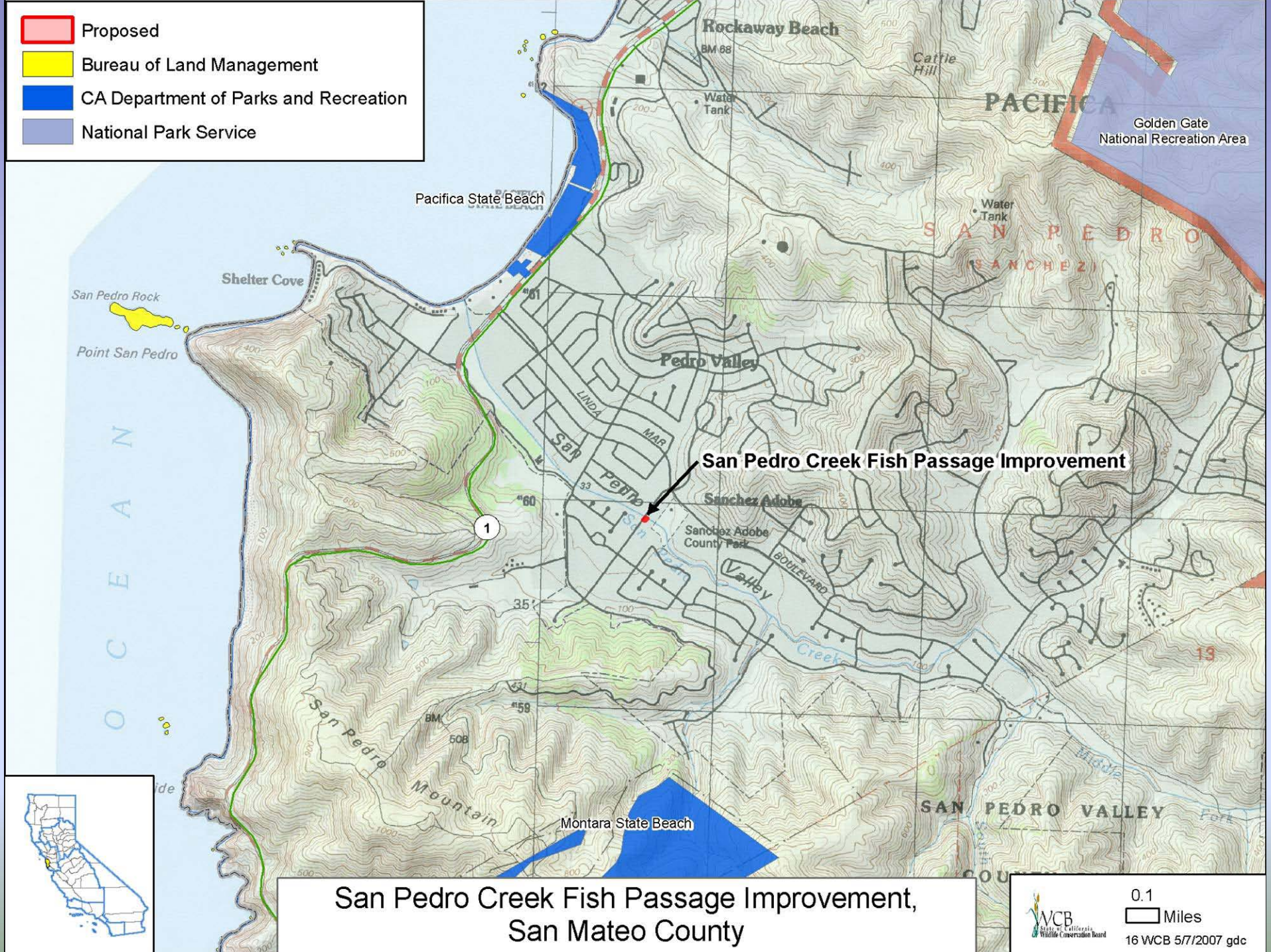
Existing pasture is mostly weeds.

15 Ingomar Ranch Wetland Restoration, Merced County



A recently restored wetland a mile from this site gets a lot of use by waterfowl, shorebirds and many other species.

-  Proposed
-  Bureau of Land Management
-  CA Department of Parks and Recreation
-  National Park Service





Proposed

San Pedro Creek Fish Passage Improvement



Adobe Road



San Pedro Creek Fish Passage Improvement,
San Mateo County



10
Meters

16 WCB 5/7/2007 gdc

16 San Pedro Creek Fish Passage Improvement, San Mateo County



Current Conditions looking upstream outside the Adobe Road Box Culvert in San Pedro Creek, Pacifica, California.

16 San Pedro Creek Fish Passage Improvement, San Mateo County



Current Conditions looking downstream inside the Adobe Road Box Culvert in San Pedro Creek, Pacifica, California.

17 Loch Lomond Marina Intertidal Enhancement, Marin County



STRAW volunteers picking Japanese Snails at Marina, Summer 2006

17 Loch Lomond Marina Intertidal Enhancement, Marin County



A closer look at invading species, *Batillaria attramentaria*, or Japanese Mud Snail. Originally accidentally imported with Pacific Oyster seed stock.

17 Loch Lomond Marina Intertidal Enhancement, Marin County

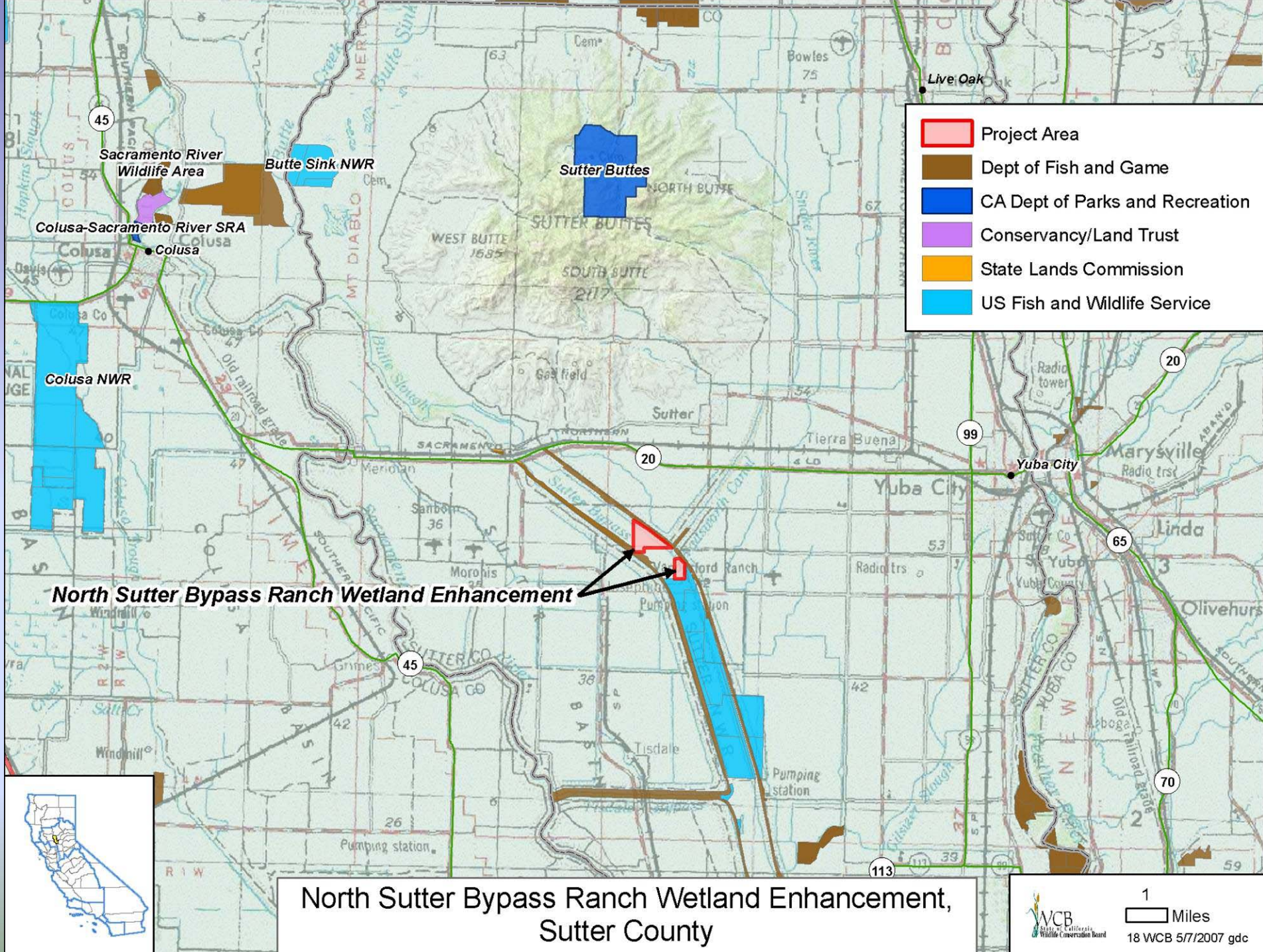


Loch Lomond Marina where Japanese Mud Snail was first found within Bay.

17 Loch Lomond Marina Intertidal Enhancement, Marin County



East of Marina where snail has also been discovered within tidal wetland













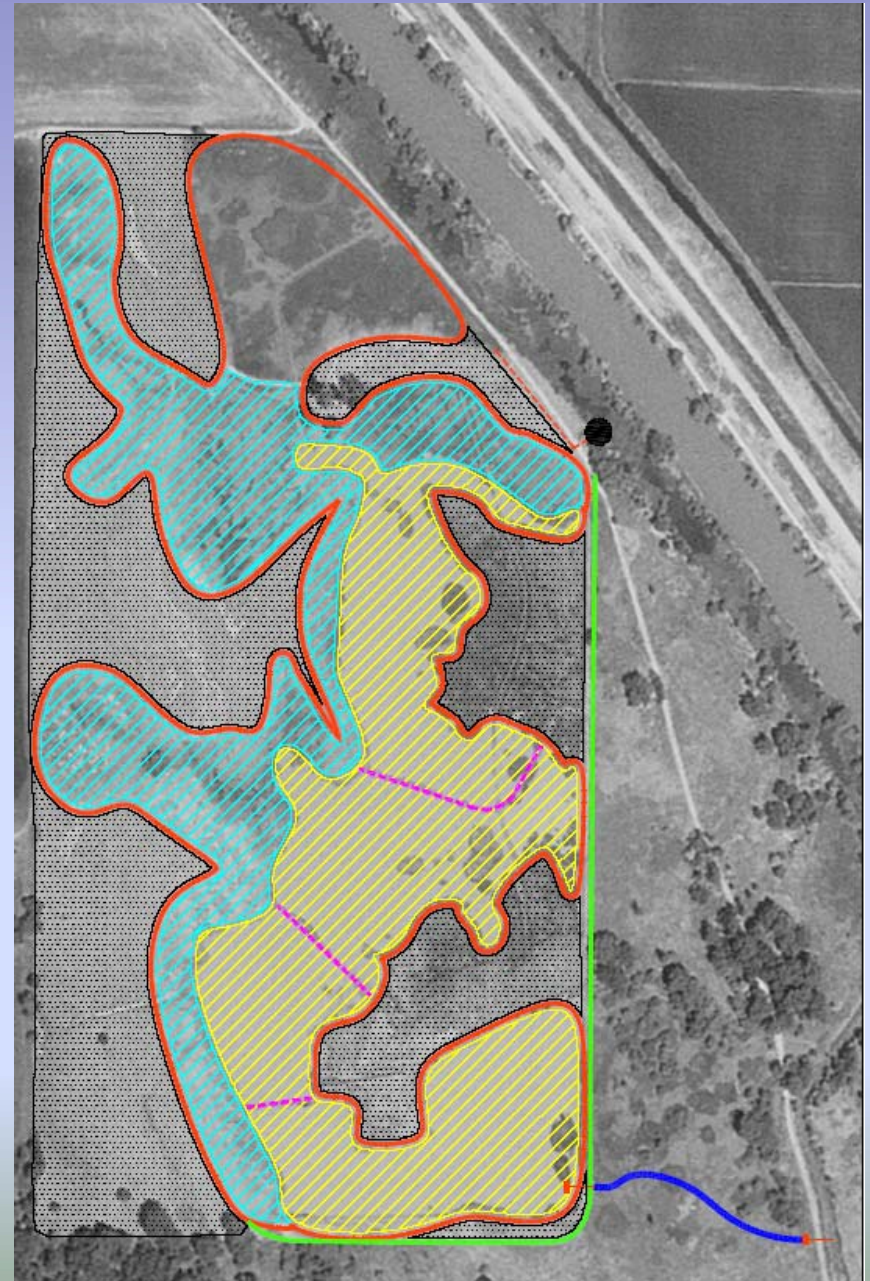
18 North Sutter Bypass Ranch Wetland Enhancement



18 North Sutter Bypass Ranch Wetland Enhancement

LEGEND

-  INSTALL WCS (P1)
-  REMOVE DEGRADED LEVEES & STRUCTURES (P1)
-  CONSTRUCT DRAIN CANAL (P1)
-  IMPROVE EXISTING LEVEE (P1)
-  RE-CONTOUR PREVIOUSLY DEVELOPED WETLANDS (P1)
-  RE-CONTOUR SWALE/POT-HOLE COMPLEX (P2)
-  INSTALL NEW DELIVERY PIPELINE (P2)
-  WETLAND ASSOCIATED UPLANDS TO BE ENHANCED (P1 & P2)
-  WETLANDS TO BE ENHANCED (P1 & P2)
-  EXISTING PUMP



18 North Sutter Bypass Ranch Wetland Enhancement

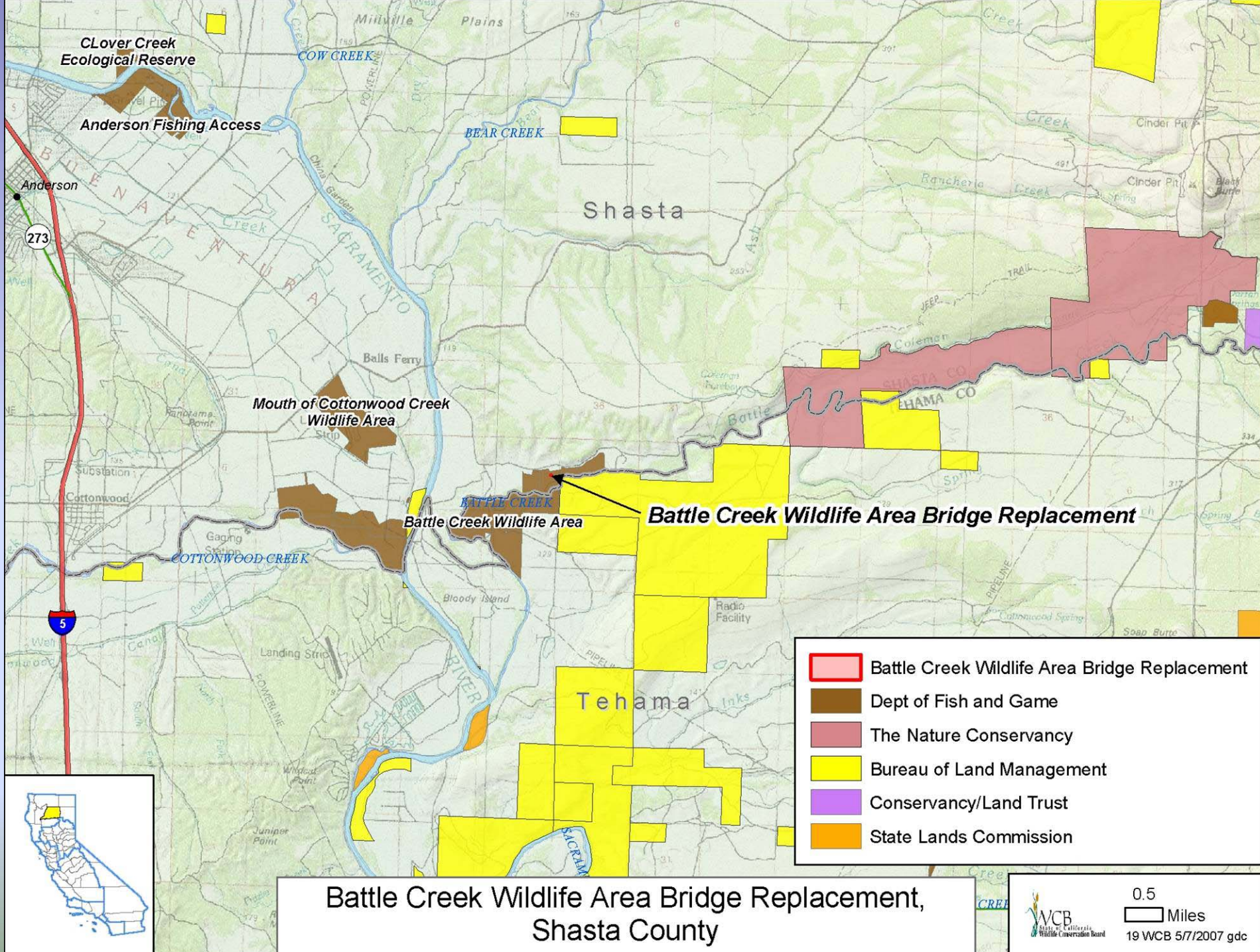



Seasonal wetlands on site cannot be easily managed and do not produce much desirable vegetation.

18 North Sutter Bypass Ranch Wetland Enhancement



Wetlands on the southern portion of the site cannot be drained.
U.S. Fish and Wildlife Service's Sutter National Wildlife Refuge in background.



 Project Area

Battle Creek Wildlife Area Bridge Replacement



**Battle Creek Wildlife Area Bridge Replacement,
Shasta County**



0.04
 Miles
19 WCB 5/8/2007 gdc

19 Battle Creek Wildlife Area Bridge Replacement



Battle Creek Kiosk

19 Battle Creek Wildlife Area Bridge Replacement



Old Bridge

19 Battle Creek Wildlife Area Bridge Replacement

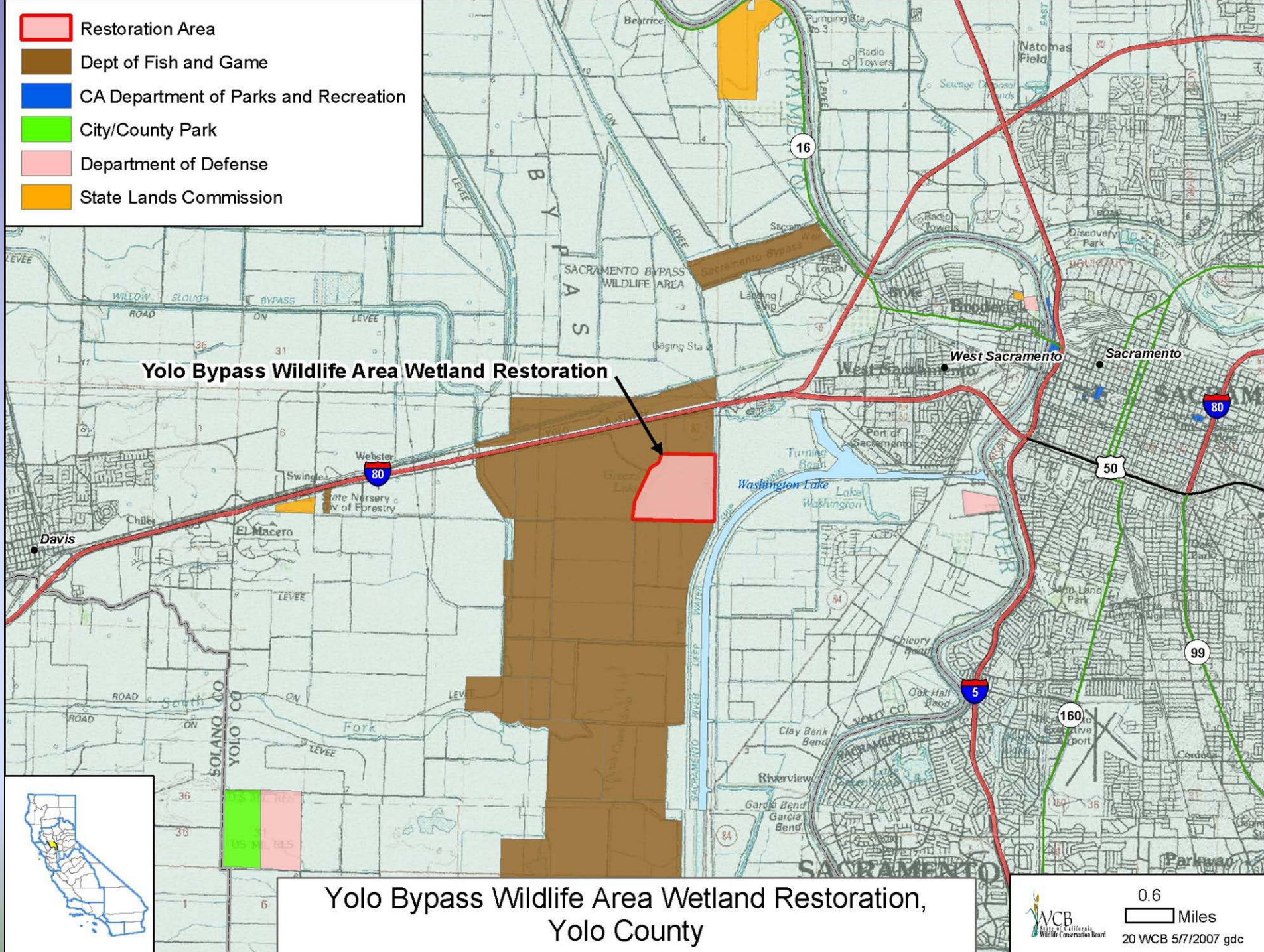


Site for new bridge location

19 Battle Creek Wildlife Area Bridge Replacement

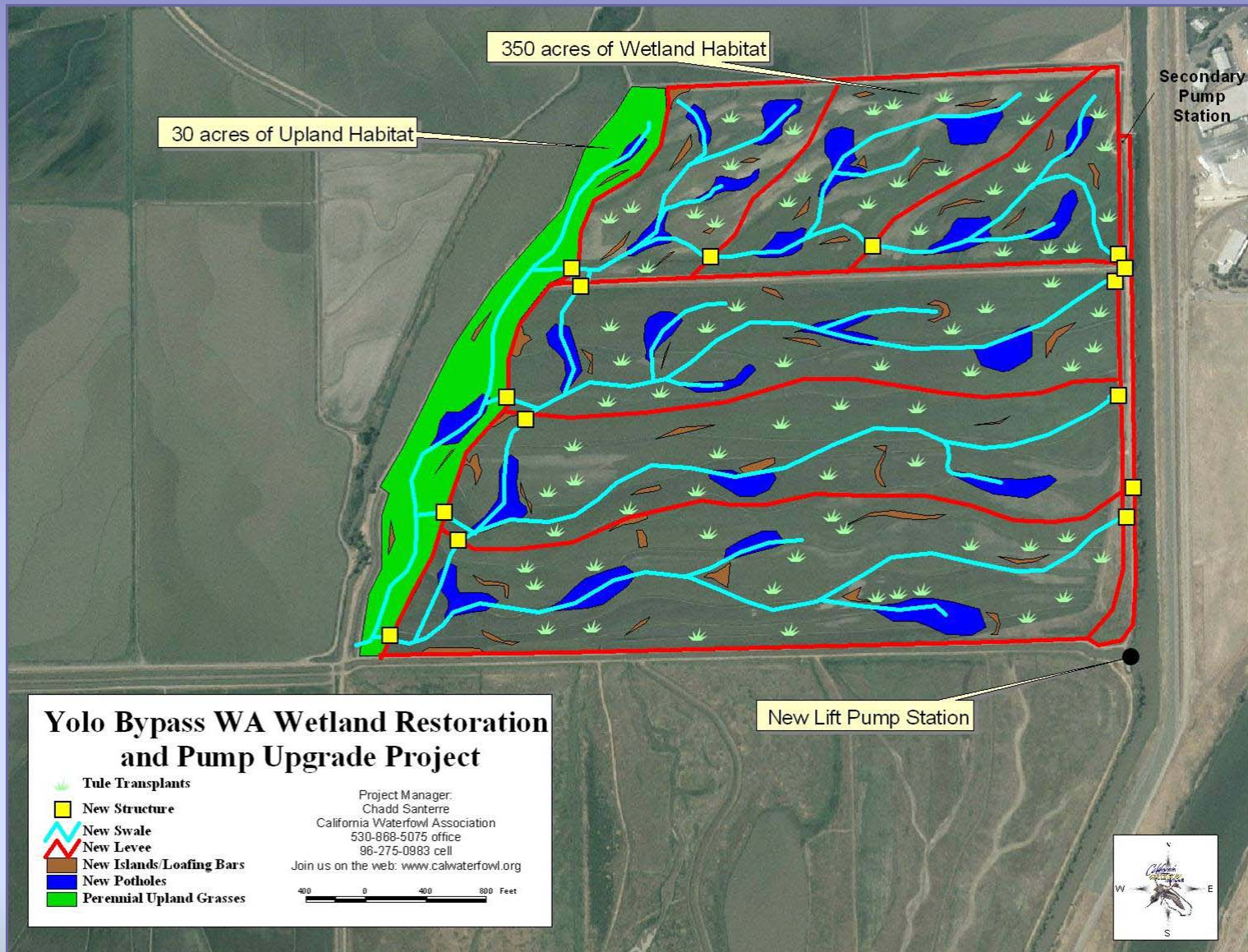


-  Restoration Area
-  Dept of Fish and Game
-  CA Department of Parks and Recreation
-  City/County Park
-  Department of Defense
-  State Lands Commission



Yolo Bypass Wildlife Area Wetland Restoration,
Yolo County

20 Yolo Bypass Wildlife Area Wetland Restoration, Yolo County



Site Plan for Restoration Activities on 350 Acres including water control structures

20 Yolo Bypass Wildlife Area Wetland Restoration, Yolo County



View of Pump Station to be upgraded on Yolo Bypass Wildlife Area

20 Yolo Bypass Wildlife Area Wetland Restoration, Yolo County

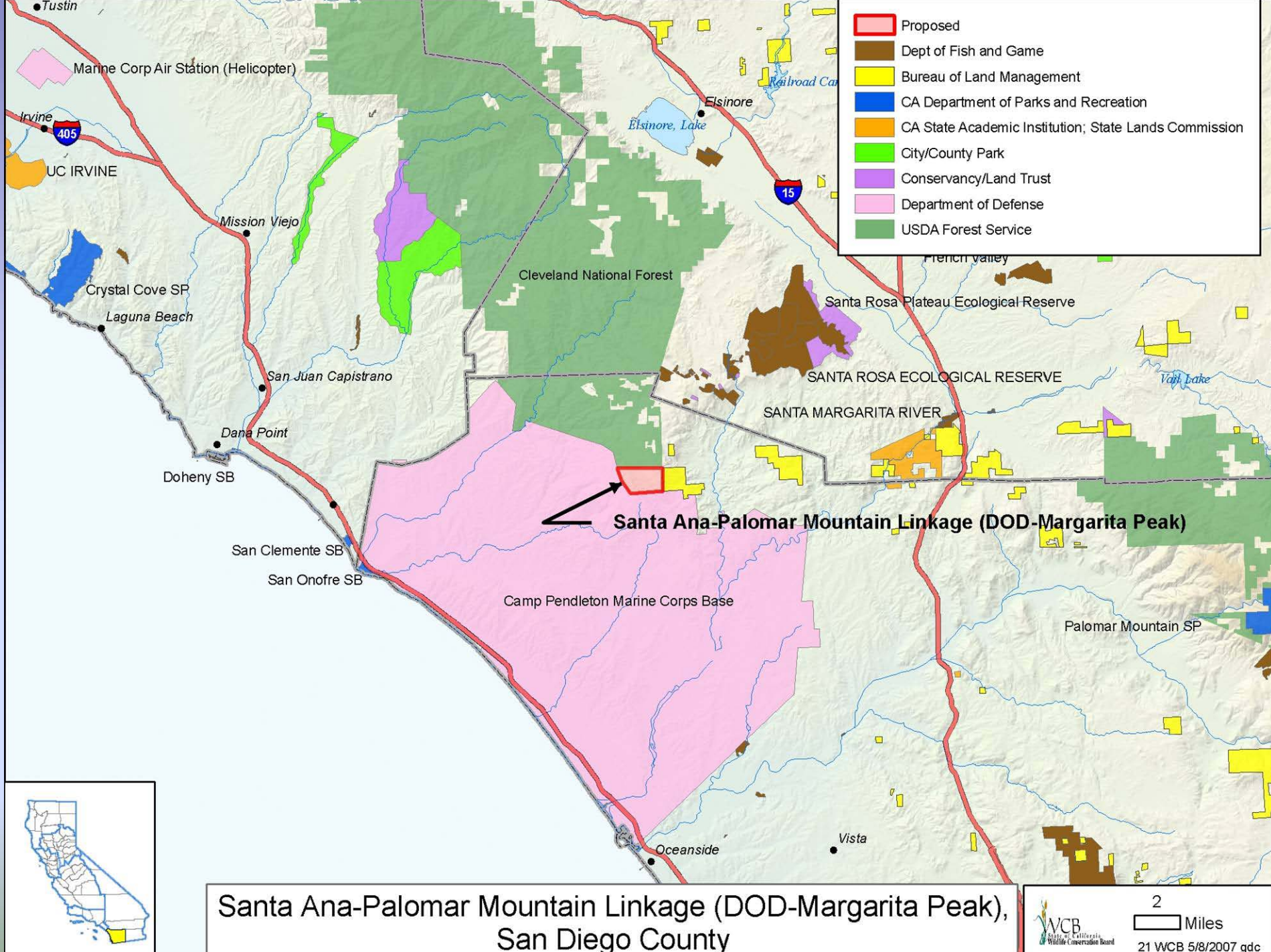


View of proposed water control structures to be built

20 Yolo Bypass Wildlife Area Wetland Restoration, Yolo County



View of Yolo Bypass Wildlife Area looking east towards Sacramento.
Above restoration plan would restore agricultural fields to seasonal wetlands like this.



21 Santa Ana-Palomar Mountain Linkage (Dept of Defense-Margarita Peak), San Diego County

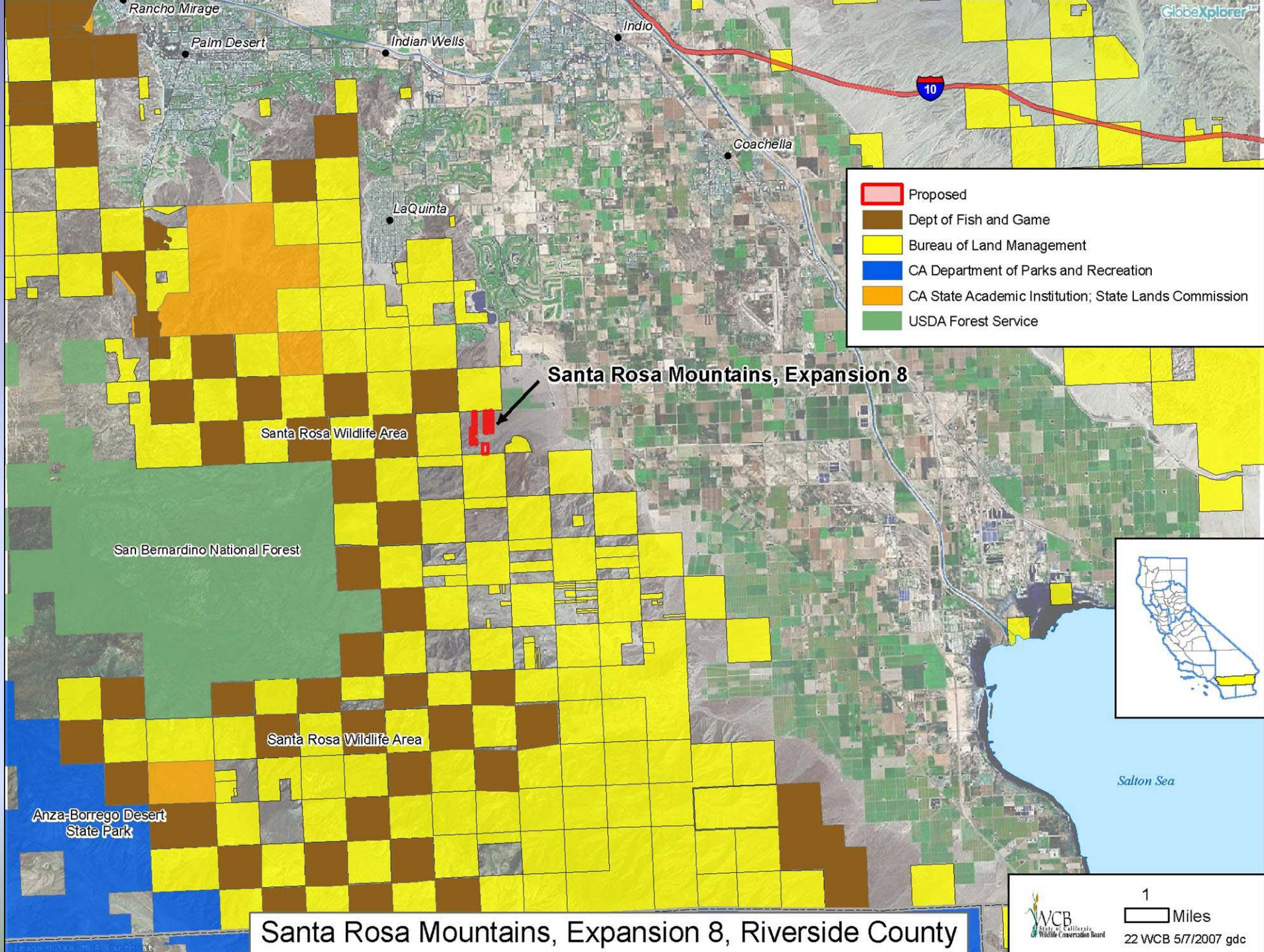


21 Santa Ana-Palomar Mountain Linkage (Dept of Defense-Margarita Peak), San Diego County



21 Santa Ana-Palomar Mountain Linkage (Dept of Defense-Margarita Peak), San Diego County





Santa Rosa Mountains, Expansion 8, Riverside County

22 Santa Rosa Mountains, Expansion 8, Riverside County



View of subject looking southwest from north of property line.

22 Santa Rosa Mountains, Expansion 8, Riverside County



View looking southeasterly from north property line.

22 Santa Rosa Mountains, Expansion 8, Riverside County

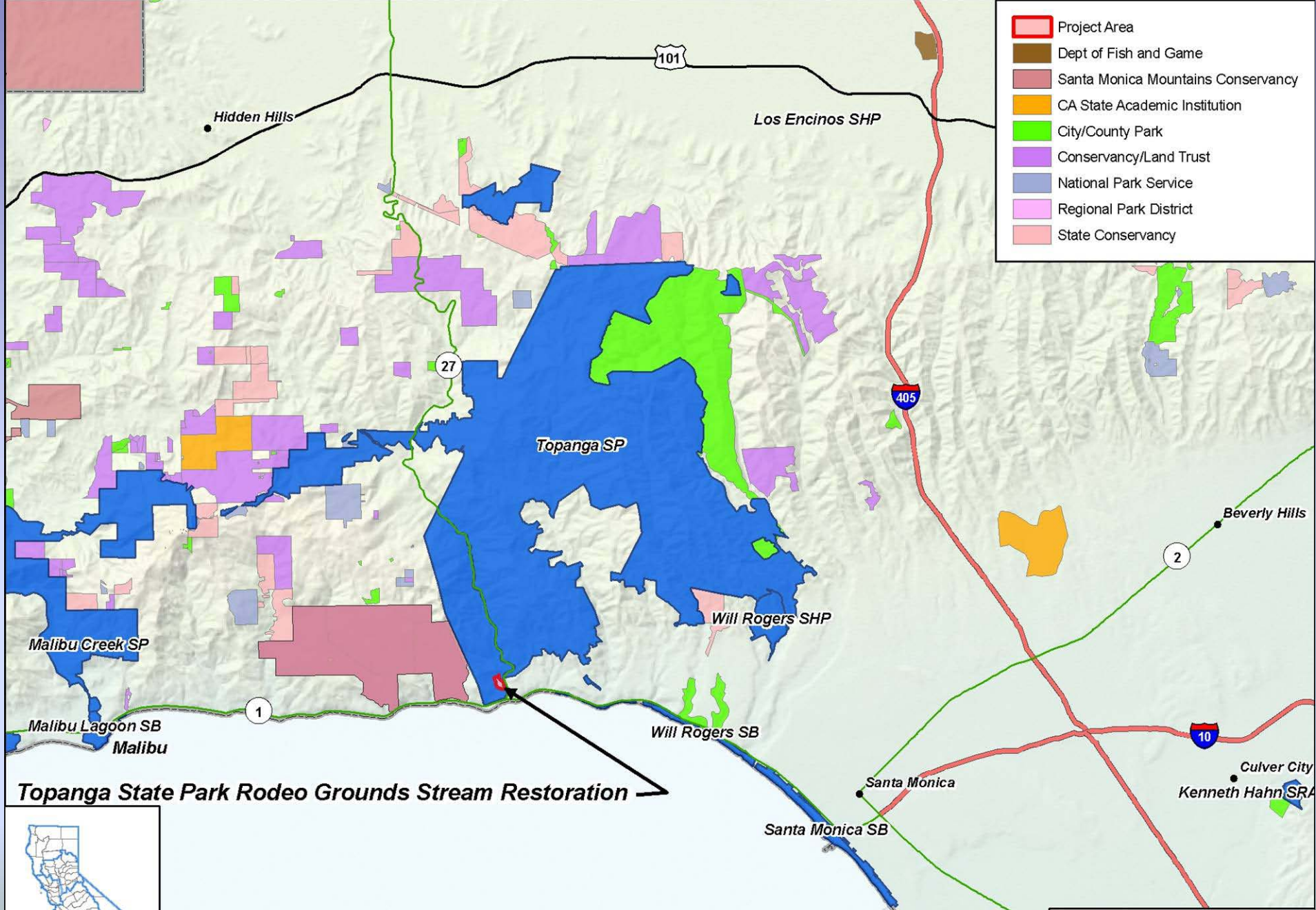


View of subject looking westerly

22 Santa Rosa Mountains, Expansion 8, Riverside County



View looking southeasterly



Topanga State Park Rodeo Grounds Stream Restoration, Los Angeles County

23 Topanga State Park Rodeo Grounds Stream Restoration, Los Angeles County



23 Topanga State Park Rodeo Grounds Stream Restoration, Los Angeles County

Top of Rodeo Grounds Berm
showing willow thickets



23 Topanga State Park Rodeo Grounds Stream Restoration, Los Angeles County



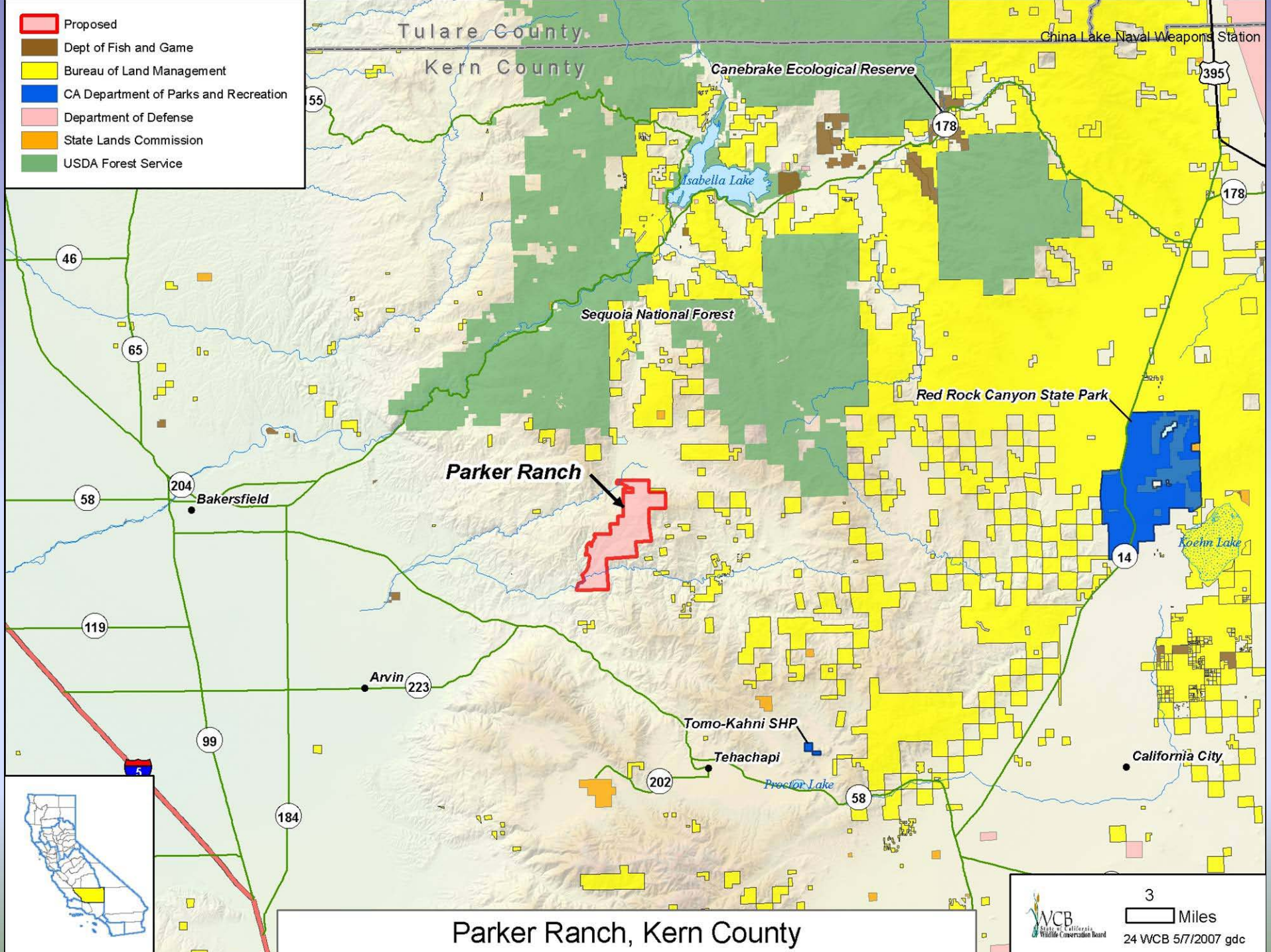
Edge of Berm showing concrete stabilization of sides

23 Topanga State Park Rodeo Grounds Stream Restoration, Los Angeles County



Looking across creek going on to berm

- Proposed
- Dept of Fish and Game
- Bureau of Land Management
- CA Department of Parks and Recreation
- Department of Defense
- State Lands Commission
- USDA Forest Service



Parker Ranch, Kern County

24 Parker Ranch, Kern County



Centennial Ridge Pasture

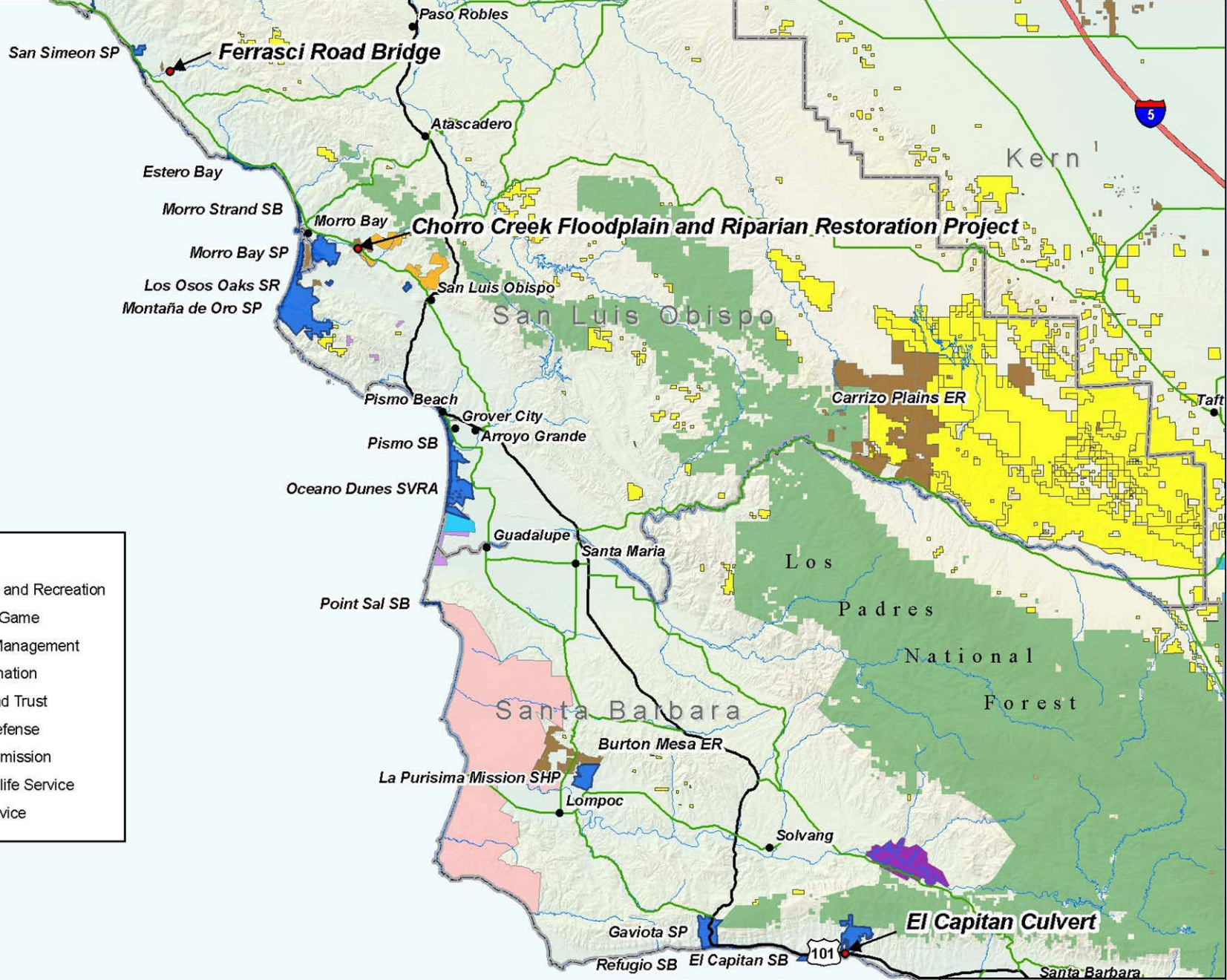
24 Parker Ranch, Kern County



South Ranch Area

25 California Fisheries Restoration Projects 2007





California Fisheries Restoration Projects - 2007,
San Luis Obispo, Santa Barbara, And Del Norte Counties

25 California Fisheries Restoration Projects 2007



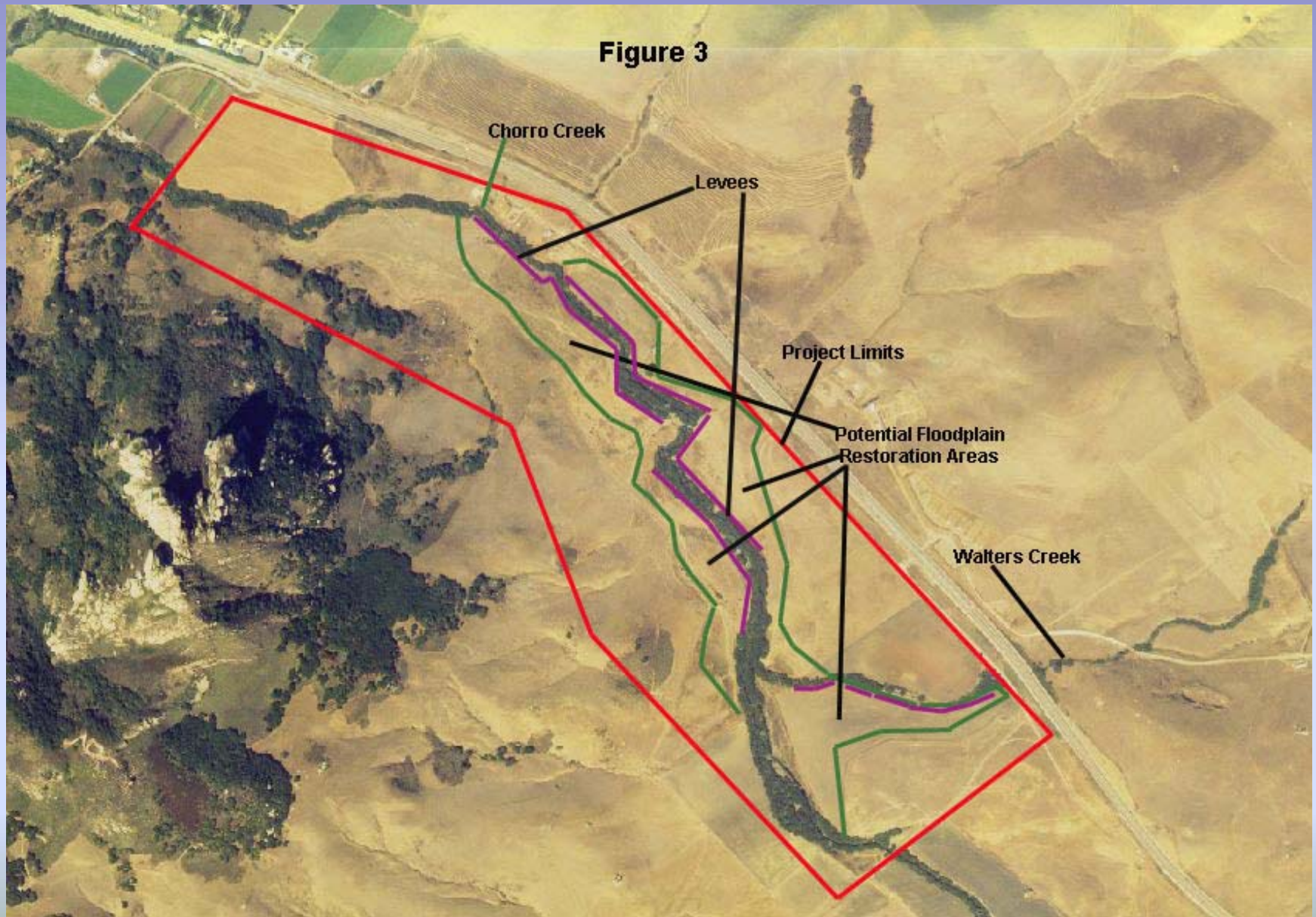
Ferrasci Road Crossing 1965

25 California Fisheries Restoration Projects 2007



Debris accumulation on Ferrasci Road crossing

25 California Fisheries Restoration Projects 2007



25 California Fisheries Restoration Projects 2007



El Capitan Creek “Arizona Crossing”

25 California Fisheries Restoration Projects 2007



Pre-fabricated bridge installation on El Capitan Creek

25 California Fisheries Restoration Projects 2007

Similar bridge at another location
on El Capitan Creek



26 San Antonio Valley, Santa Clara County



Western Area of Property – Northeast View

26 San Antonio Valley, Santa Clara County



Middle Area of Property

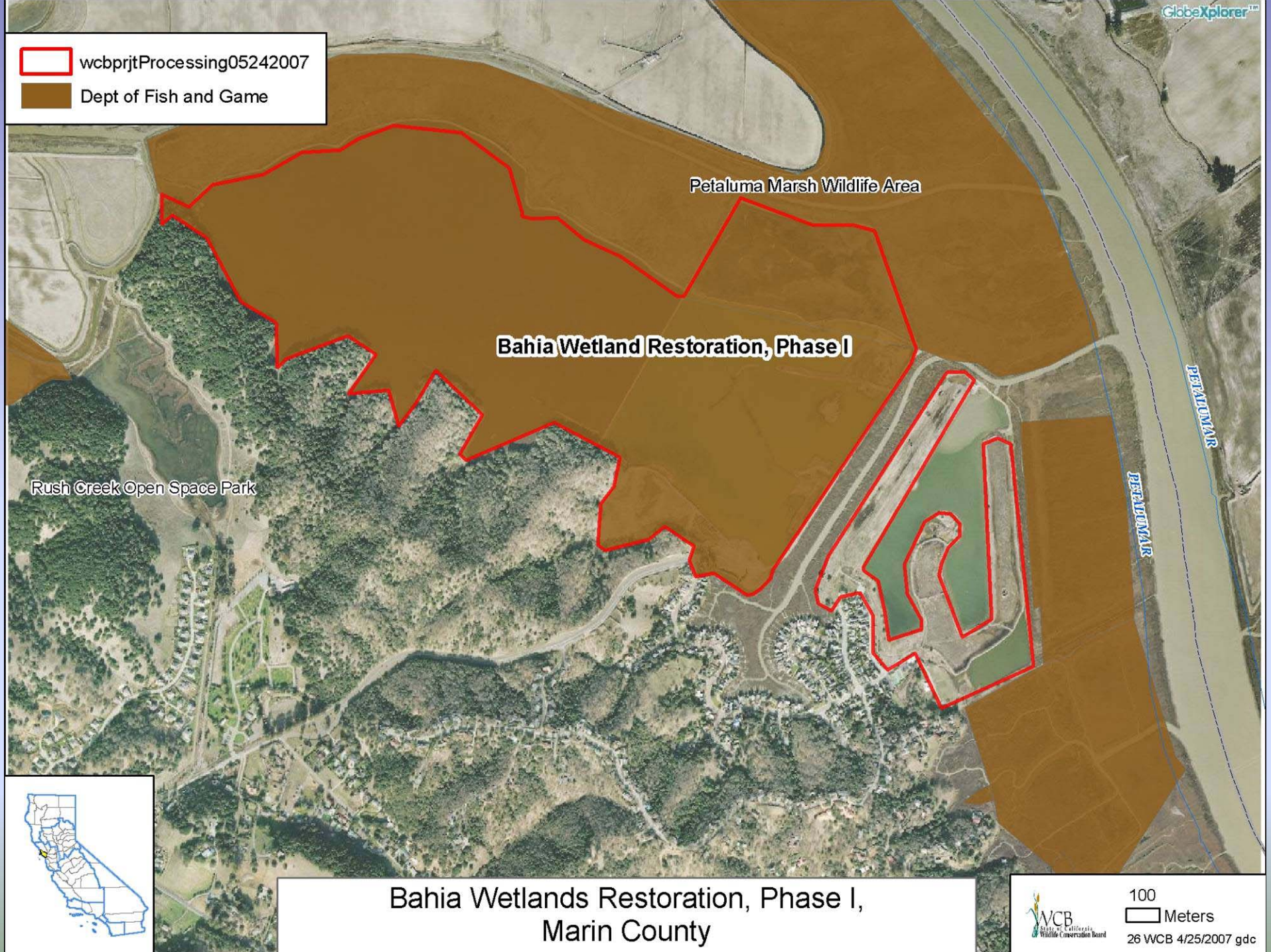
26 San Antonio Valley, Santa Clara County



Spring-Fed Pond on Middle Area of Property

wcbprjtProcessing05242007

Dept of Fish and Game



Petaluma Marsh Wildlife Area

Bahia Wetland Restoration, Phase I

Rush Creek Open Space Park

PETALUMA RIVER



Bahia Wetlands Restoration, Phase I,
Marin County



27 Bahia Wetland Restoration, Phase I, Marin County



Eastern and Central Peninsula owned by Marin Audubon Society

27 Bahia Wetland Restoration, Phase I, Marin County



View of Central Peninsula tip, property Owned by Marin Audubon Society

27 Bahia Wetland Restoration, Phase I, Marin County



View of Petaluma Marsh Wildlife Area, West Bahia Unit, owned by DFG, looking towards Marin County Open Space District Blue Oak Woodland Property

27 Bahia Wetland Restoration, Phase I, Marin County



View towards DFG lands across channel from Western Peninsula.

28 Putah Creek Fishing Access Improvements, Yolo County



Site of barrier-free trail and fishing platform at Site #1

28 Putah Creek Fishing Access Improvements, Yolo County



This parking area at Site #2 will be removed and a new parking lot will be built on higher ground

28 Putah Creek Fishing Access Improvements, Yolo County



Some access trails will be improved and some will be removed to consolidate foot traffic on the sites.

28 Putah Creek Fishing Access Improvements, Yolo County



The park host area at Site #3 will be completely renovated.

28 Putah Creek Fishing Access Improvements, Yolo County



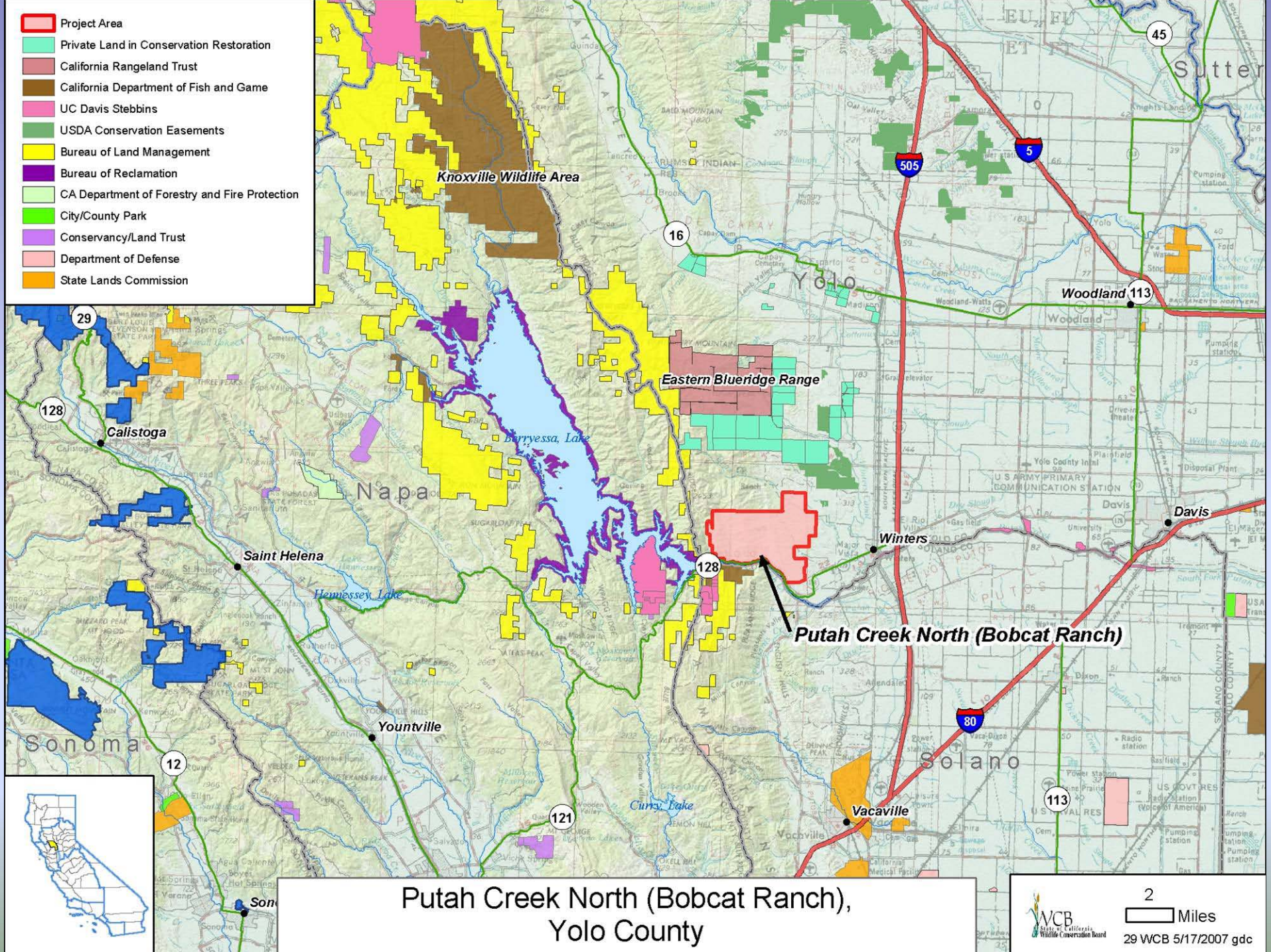
Site #3 barrier-free fishing platform will go here.

28 Putah Creek Fishing Access Improvements, Yolo County



Barrier-free trails and 3 overlook platforms with interpretive signage will be constructed at Site #4

- Project Area
- Private Land in Conservation Restoration
- California Rangeland Trust
- California Department of Fish and Game
- UC Davis Stebbins
- USDA Conservation Easements
- Bureau of Land Management
- Bureau of Reclamation
- CA Department of Forestry and Fire Protection
- City/County Park
- Conservancy/Land Trust
- Department of Defense
- State Lands Commission



29 Putah Creek North (Bobcat Ranch), Yolo County



Southwest Corner of Property –Easterly View

29 Putah Creek North (Bobcat Ranch), Yolo County



Middle Area of Property – Easterly View

29 Putah Creek North (Bobcat Ranch), Yolo County



Northeast Area of Property – Westerly View

30 Martis Valley, Nevada and Placer Counties



Meadow Area of Property – Southeasterly View

30 Martis Valley, Nevada and Placer Counties








Northeast Corner of Property – “Dry Lake” –Easterly View

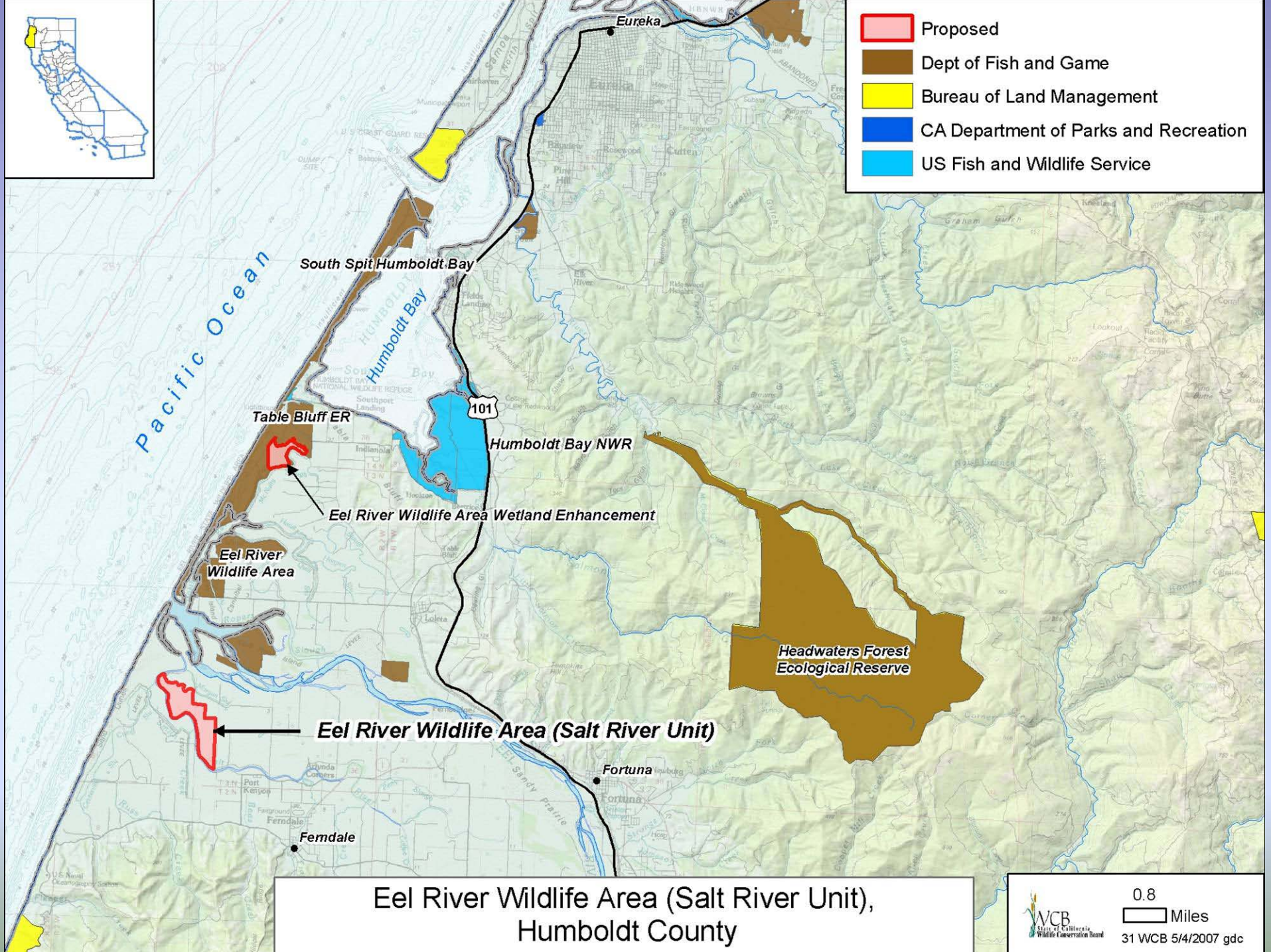
30 Martis Valley, Nevada and Placer Counties

**Forested Area of Property
– Southerly View**





-  Proposed
-  Dept of Fish and Game
-  Bureau of Land Management
-  CA Department of Parks and Recreation
-  US Fish and Wildlife Service



Eel River Wildlife Area (Salt River Unit),
Humboldt County



0.8
Miles
31 WCB 5/4/2007 gdc

31 Eel River Wildlife Area (Salt River Unit), Humboldt County



View of Salt Creek River drainage looking west.

31 Eel River Wildlife Area (Salt River Unit), Humboldt County



View of Salt River drainage looking northwest.

31 Eel River Wildlife Area (Salt River Unit), Humboldt County



View looking north from southeast corner of the property.

31 Eel River Wildlife Area (Salt River Unit), Humboldt County



View of subject property looking south. Wildcat Hills are in the distance.

31 Eel River Wildlife Area (Salt River Unit), Humboldt County








View looking south – area to right is silted in Salt River.

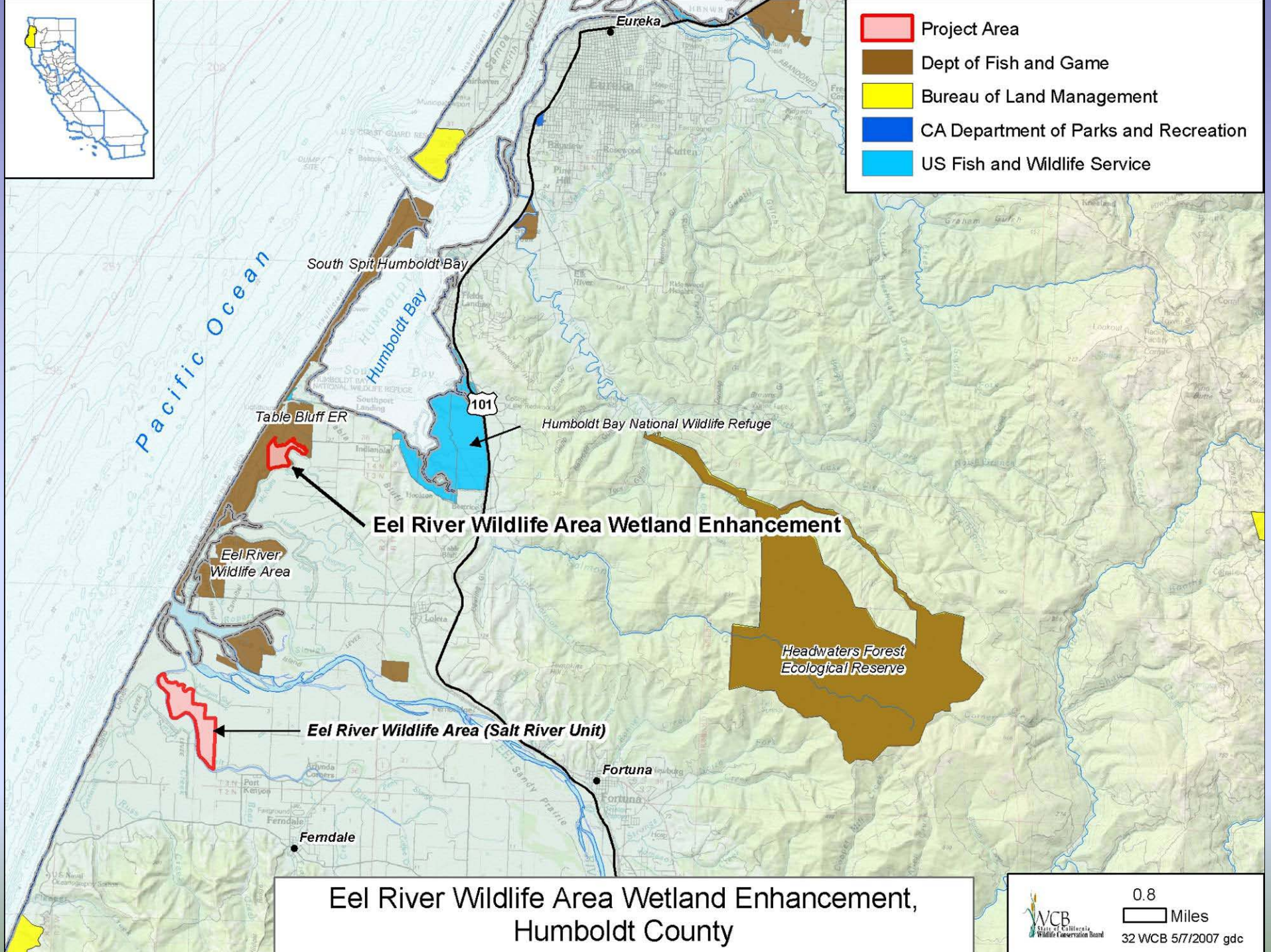
31 Eel River Wildlife Area (Salt River Unit), Humboldt County



View looking north. Salt River on left side of picture. Near center are remnants of steamer boat channel from the late 1800s.

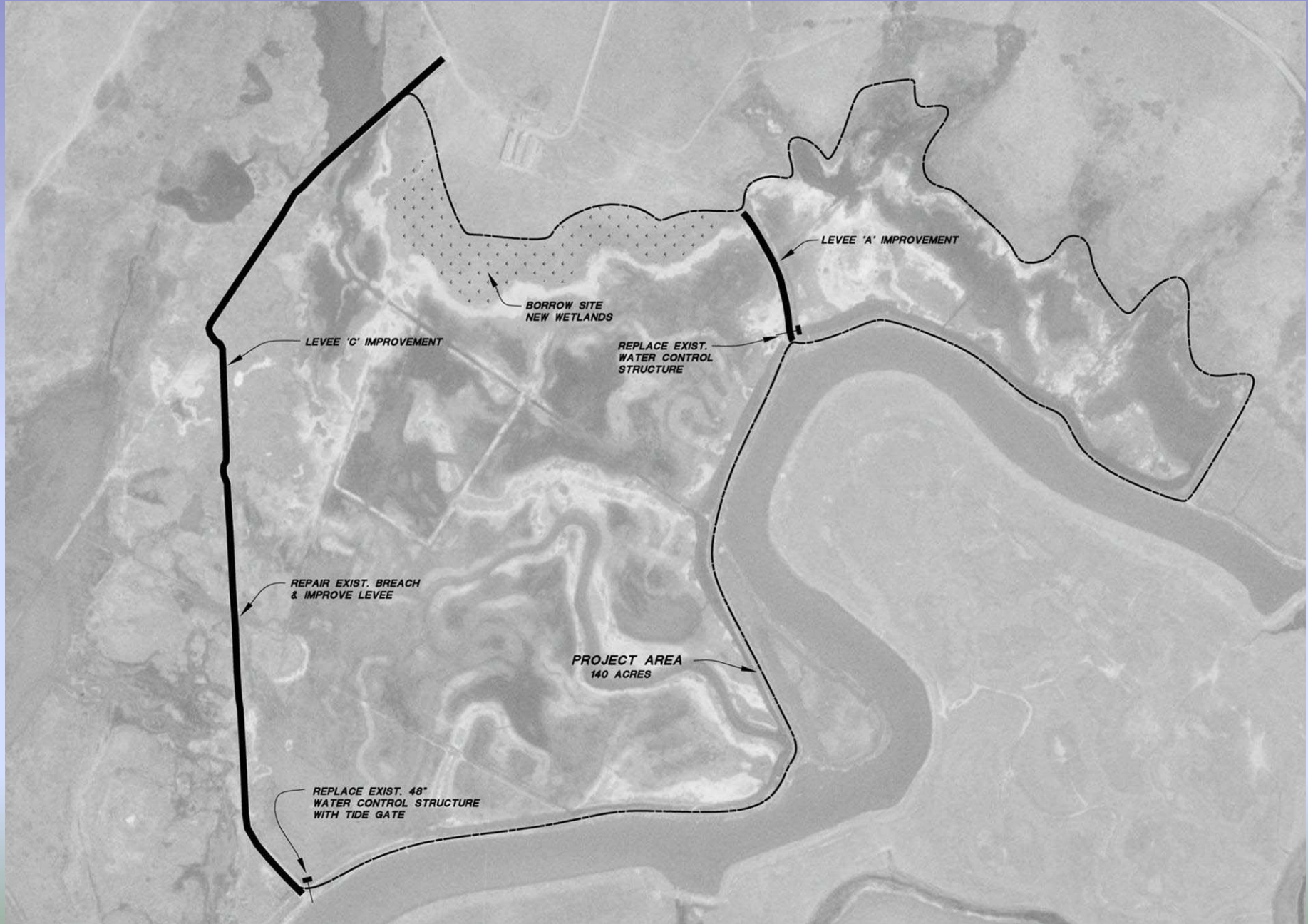


-  Project Area
-  Dept of Fish and Game
-  Bureau of Land Management
-  CA Department of Parks and Recreation
-  US Fish and Wildlife Service



Eel River Wildlife Area Wetland Enhancement,
Humboldt County

32 Eel River Wildlife Area Wetland Enhancement, Humboldt County



32 Eel River Wildlife Area Wetland Enhancement, Humboldt County



Erosion problems and failed water control structure.

32 Eel River Wildlife Area Wetland Enhancement, Humboldt County



Another structure that needs replacing.

32 Eel River Wildlife Area Wetland Enhancement, Humboldt County



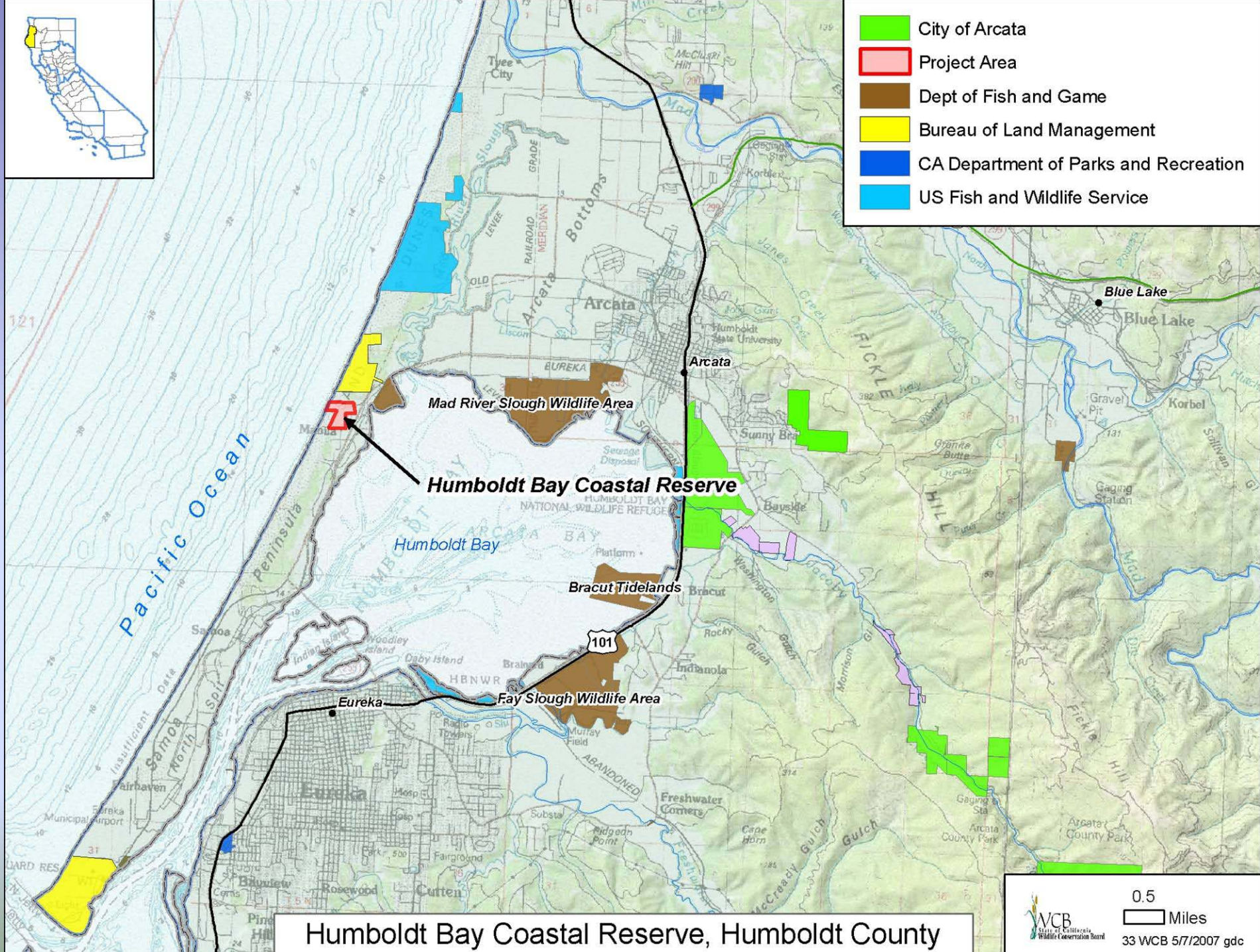
Levee in center to be raised and strengthened. Managed wetlands on both sides to be enhanced.

32 Eel River Wildlife Area Wetland Enhancement, Humboldt County





- City of Arcata
- Project Area
- Dept of Fish and Game
- Bureau of Land Management
- CA Department of Parks and Recreation
- US Fish and Wildlife Service



Humboldt Bay Coastal Reserve, Humboldt County

33 Humboldt Bay Coastal Reserve, Humboldt County



Front view of building/residence proposed to be refurbished to education/visitor center.

33 Humboldt Bay Coastal Reserve, Humboldt County



Side view of building proposed a education/visitor center.

33 Humboldt Bay Coastal Reserve, Humboldt County



Dune habitat looking south.

33 Humboldt Bay Coastal Reserve, Humboldt County



Dune habitat looking north – note Maritime forest.

33 Humboldt Bay Coastal Reserve, Humboldt County



Beach layia

33 Humboldt Bay Coastal Reserve, Humboldt County



Humboldt Bay wallflower