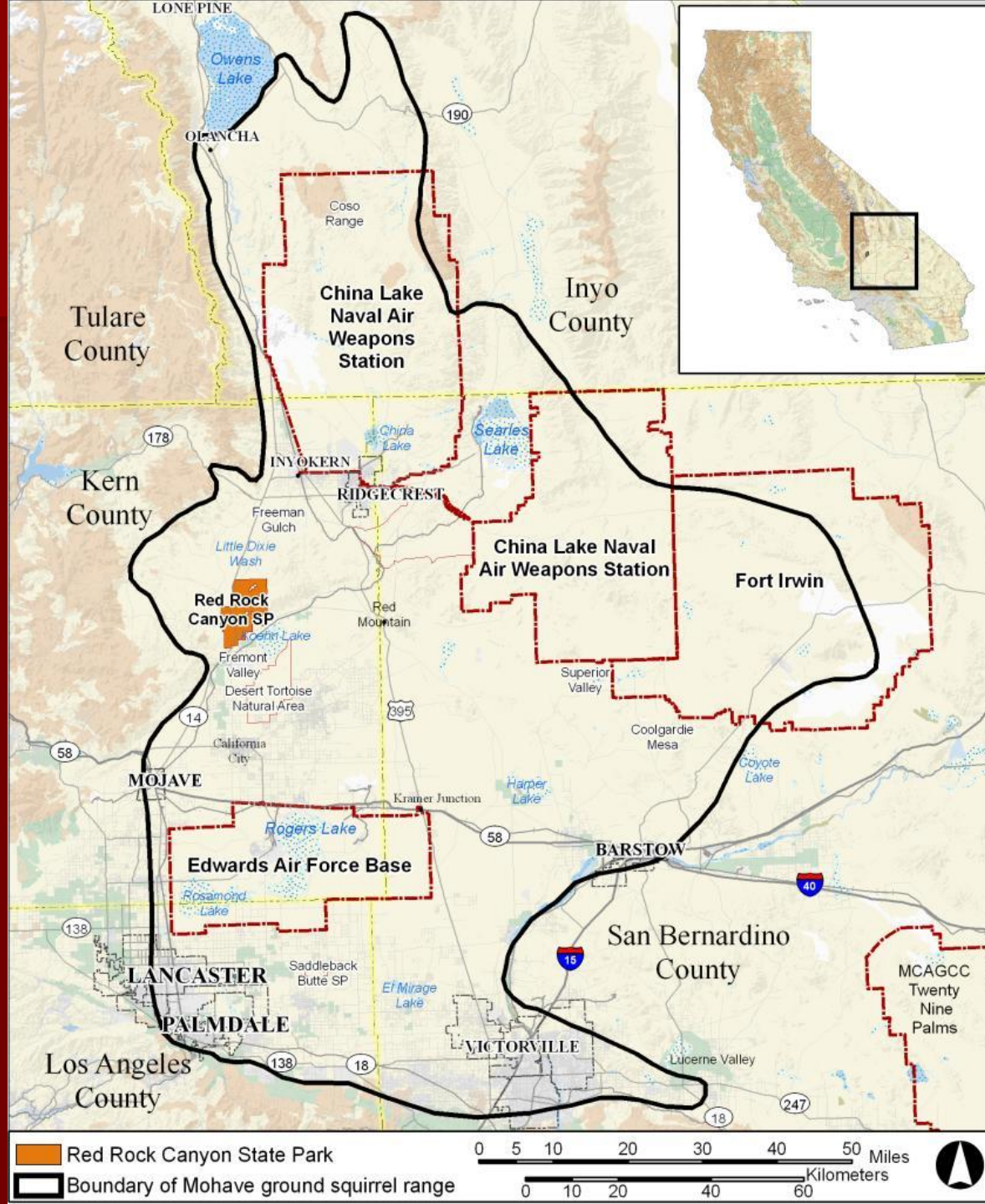


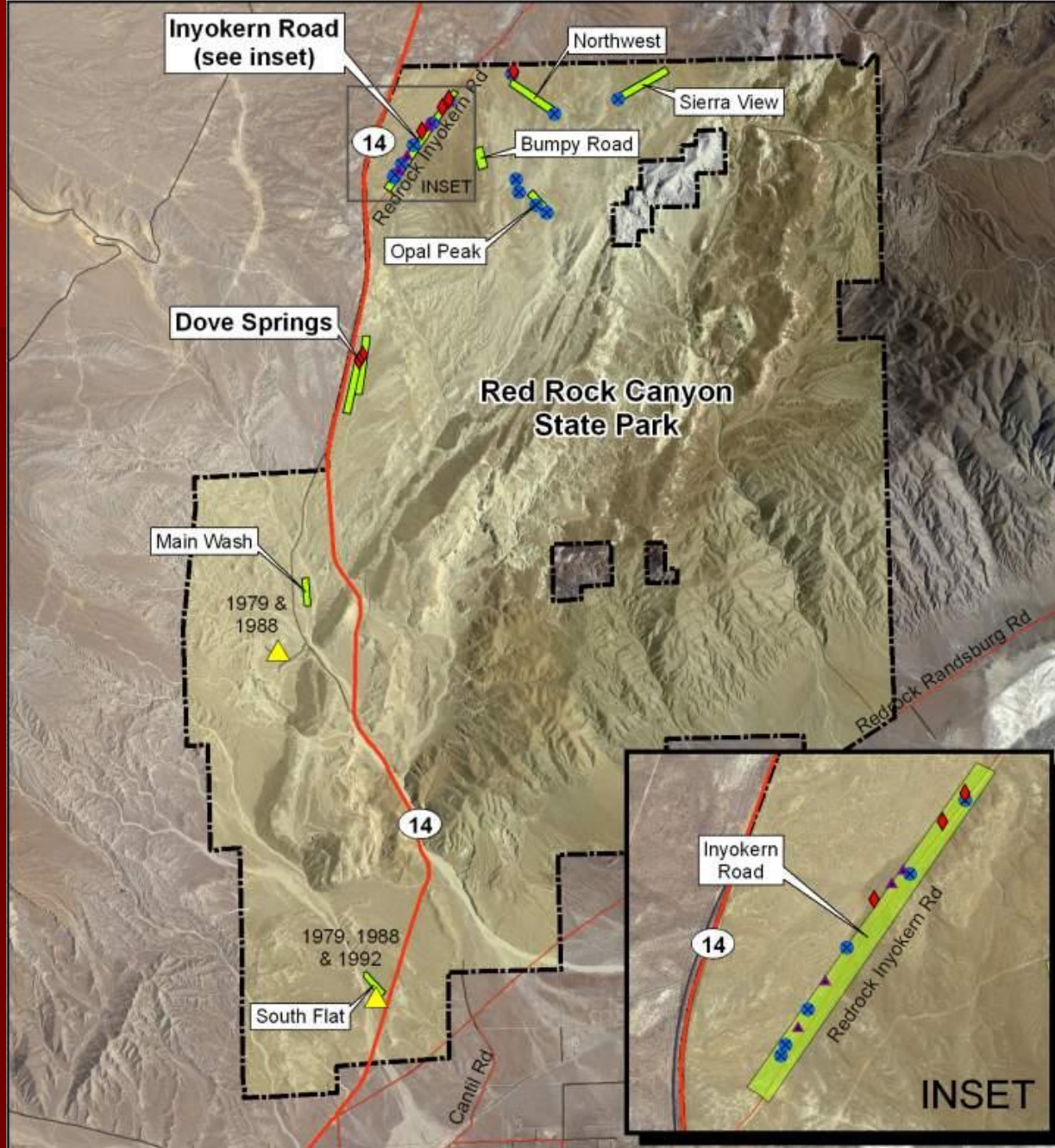
RED ROCK CANYON STATE PARK

MGS Surveys 2010



Follow-up to 2007 and 2008 Surveys

- In 2007 – 8 adult MGS captured at 4 sites in the north of RCCSP
- In 2008 – 4 juvenile MGS trapped at 1 site in the north of RCCSP
- In 2009 – no surveys
- In 2010 – 5 juvenile MGS captured at 2 sites in the north of RCCSP



Captures/Observations

▲ Older records

◆ 2010 records

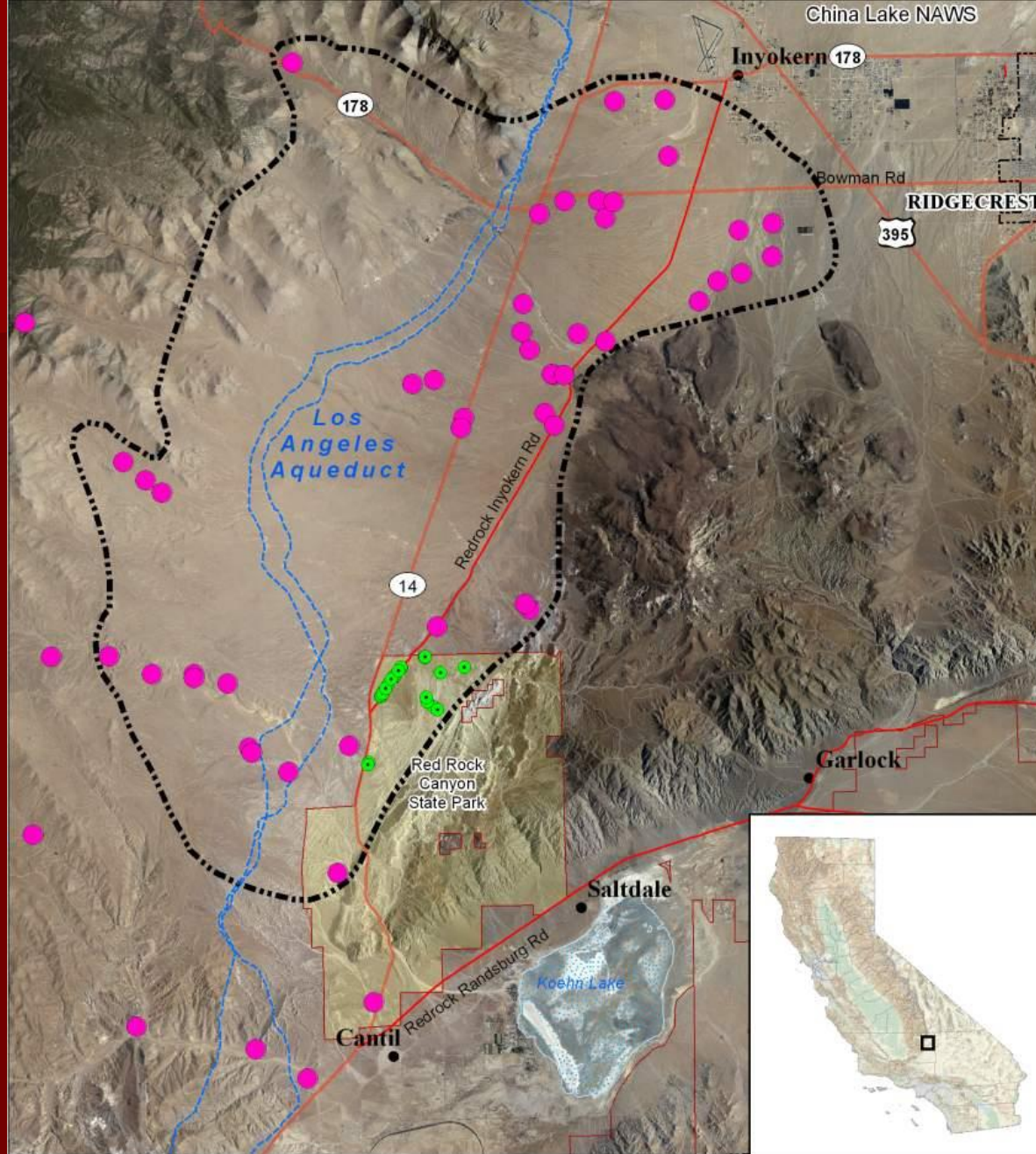
▲ 2008 records

● 2007 records

0 0.5 1 Kilometers

0 0.5 1 2 3 Miles

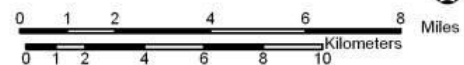




Tentative boundary of Little Dixie Wash core area

Captures/Observations (2007/2008/2010)

Previous Mohave ground squirrel occurrences



RED ROCK CANYON

- Good evidence for MGS population in the northwest corner of RRCSP
- This appears to be part of the Little Dixie Wash core area
- No recent confirmation of older records in central or southern parts of the park
- Thanks to Carrie Bemis for promoting surveys to determine current MGS status in RRCSP