

FRANKS TRACT FUTURES?

**Exploring Options for Multi-Benefit Restoration
and Increased Resilience in the Central Delta Corridor**

**Summary of Technical Reports
& Early Stakeholder Input**

California Department of Fish & Wildlife
June 2018





PROJECT MANAGEMENT

CALIFORNIA DEPARTMENT OF FISH & WILDLIFE

Carl Wilcox

Christina Sloop, Ph.D.

Brooke Jacobs, Ph.D.

Cindy Hensley

PROJECT RESEARCH

HYDRODYNAMICS

Eli Ateljevich PE, Ph.D & Kijin Nam PE, Ph.D.

Bay-Delta Office, Delta Modeling Section

California Department of Water Resources

ENGINEERING FEASIBILITY

Mads Jorgenson, PE

Moffatt & Nichol, Walnut Creek, California

Burt Yu, Sr. Engineer, Metropolitan Water District

COMMUNITY, STAKEHOLDER, AND PUBLIC OUTREACH

Brett Milligan, Professor of Landscape Architecture, UC Davis

Alejo Kraus-Polk, Ph.D. candidate in Geography, UC Davis

ADDITIONAL REPORT REVIEWERS

John Calloway, Ph.D., Lead Scientist

Delta Science Program

Jane Chesney, Bethel Island Resident

Greg Gartrell, Public Policy Institute California

David Gloski, Bethel Island Resident

Edward Hard, MPPA

California Department of Parks & Recreation

Bruce Herbold, Ph.D., Fish Biologist

Jim Micheaels

California Department of Parks & Recreation

Peter Moyle, Ph.D.

University of California at Davis

Ted Sommer, Ph.D.

Department of Water Resources

Cite as:

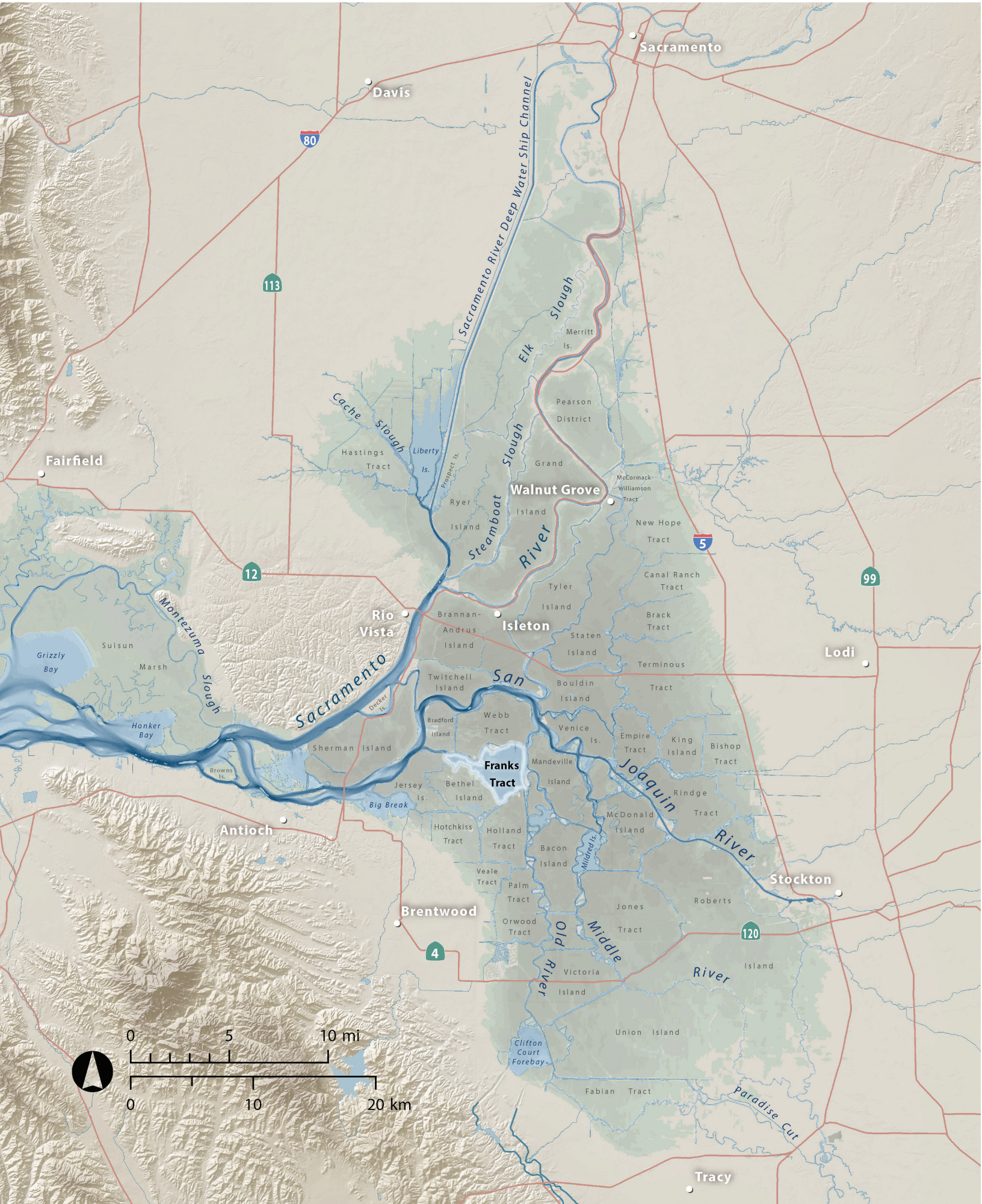
*Franks Tract Futures? Multi-Benefit Restoration Synthesis Report,
California Department of Fish & Wildlife, June 2018*

For more information

Carl.Wilcox@wildlife.ca.gov

CONTENTS

1. Executive Summary	3
2. Introduction	7
Setting	
Current State Goals for Smelt Resilience	
Prior State and Federal Goals	
Delta Conservation Framework and Central Delta Corridor Partnership	
3. Restoration Approach	17
The CDFW Concept	
Rationale for Re-establishing Tidal Processes – Delta Renewed	
4. Hydrodynamic Modeling	25
Overview	
Velocity Studies	
Regional Impacts on Water Levels, Flow, Salinity	
5. Engineering Feasibility	35
Options & Costs	
General Work Plan – Lowest Cost, Most Feasible Approach	
6. Recreation, Communities, Economy, and Other Considerations	41
State Recreation Area Management Concerns	
Local Community Concerns	
7. Findings and Next Steps	50
8. References	51





1. Executive Summary

In the heart of California's Sacramento-San Joaquin River Delta lies a 3,000-acre flooded island called Franks Tract. Various partners, led by the California Department of Fish & Wildlife (CDFW), are now proposing to restore about 1,000 acres of the Tract to tidal marsh. Franks Tract is not only a publicly-owned state recreation area but also one of the least subsided flooded islands in the central Delta, two conditions that make it a strong candidate for large, landscape scale, improvements.

The proposed restoration, still in the idea stage, could shrink waterweeds, grow fish food, create habitat for Delta smelt and other declining pelagic species, and prevent salinity intrusion into the south Delta. With some fine-tuning, it might also help improve recreational opportunities for residents and visitors, as well as long-term state parks management of the area.

This report summarizes the restoration design concepts developed to date, early stakeholder feedback from state parks and neighboring

RESTORING FRANKS TRACT

*650 – 1,000 acres of tidal marsh
2.85 miles of new channel
9,000 – 18,000 feet levee edge
2,200 – 2,600 acres of shallow and deep open water habitat.*



Restoration Benefits

HYDRODYNAMICS & WATER QUALITY

- *Reduces False River flows and isolates the tidal pumping region from the Old River fresh water corridor*
- *Shields regions upstream of the restoration site from ocean saltwater intrusion*
- *Freshens the central Delta*
- *Augments benefits of Dutch Slough, Prospect Island, and McCormack-Williamson Tract restoration projects. If all four together went ahead, Franks Tract would still reduce or offset central Delta salinity*

FISH & HABITAT

- *Creates intertidal marsh habitat in the much-subsided central Delta*
- *Creates dead-end sloughs where native fish can hide from predators*
- *Creates conditions conducive to phytoplankton and zooplankton growth (fish food) along marsh edges*
- *Deepens a large area of Franks Tract enough that submerged aquatic vegetation cannot take root*
- *Creates edge habitats along new levees where valued non-native sport fish can be enhanced*

DELTA SUSTAINABILITY

- *Reduces long-term expense of short term, emergency salinity barriers*
- *Relies on natural physical and biological processes to sustain new habitats*
- *Creates new habitat on a sustainable scale (~1,000 acres, SFEI A Delta Renewed)*
- *Offers opportunities to improve the local landscape and levees in ways more adaptable to recurring drought, rising sea levels, and extreme flood events*
- *Engages waterfront communities in considering future sustainability of Delta landscapes and lifestyles*

communities, and results from initial hydrodynamic modeling and engineering studies. A rough estimate suggests construction of the CDFW design could cost about \$315 million dollars. Costs could be reduced substantially if the restoration of little Franks Tract was not included.



Photo: Rick Lewis

Before humans diked and drained Franks Tract to grow potatoes, grains, asparagus and corn, the island was part of a vast freshwater marsh. Breaches in the levees flooded the island in 1937, and farmers never reclaimed Franks Tract. Over the decades, weeds invaded the shallows, displacing native species and inviting newcomers from the Mississippi River like largemouth bass to make themselves at home, so much so that adjacent Bethel Island is now a frequent launch point for national bass fishing tournaments. In these same waters, native fish now find little hospitable habitat, food, shelter, and refuge from predators.

Franks Tract today is a nexus point of many delta uses, ranging from duck hunting and bass fishing to fresh water supply for California cities and farms. This supply, in the form of reservoir releases and river outflows, moves along the eastern edge of Franks Tract on its way south to the intakes of the Contra Costa Water District and the state and federal water projects. Droughts reduce these flows, leaving the water in and around Franks Tract increasingly salty. To reduce tidal salinity intrusion in 2015, the state had to place 150,000 tons of rock in the West False River near Franks Tract (and then take the barrier out again, at a total cost to taxpayers of \$37 million). Rather than continuing to invest in these expensive, engineered, emergency fixes, CDFW and its partners are suggesting the creation of a permanent dead end slough in West False River culminating in the restored tidal marsh.

Early results of hydrodynamics modeling by the Department of Water Resources indicate that the proposed restoration would freshen the central Delta. Early evaluation by Moffat & Nichol of potential sources of fill to create intertidal marsh elevations, as well as of engineering constraints, indicate that the easiest and cheapest approach would be to build a new berm across part of the Tract, then dredge on one side of the berm and place the dredged material on the other.

Early efforts to assess current uses of the Tract, and how local communities might view any kind of restoration initiative, included a survey by UC Davis. The 2017 survey documents year-round use of Franks Tract and surrounding channels by locals, visitors, and researchers, and seasonal use by hunters, anglers, and boaters. Many survey respondents were concerned about changes in their access to the water, and effects on the local economy and sport fishing, which is dependent on that access. However, resources to support

EVOLUTION OF FRANKS TRACT?



Historical freshwater marsh drained by numerous long dead-end channels providing fish habitat.

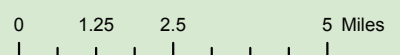
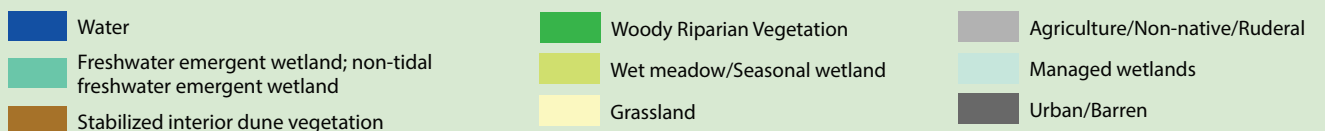


Today's flooded island, 6-8 feet deep, with a direct connection between False River and Old River and to other waterways on all sides.



Future marsh habitats with dendritic channels, and deeper adjacent open water habitats. Improved habitats for native and pelagic fish. New levees preventing salinity intrusion.

Historical and Modern Habitat Types



Restoration Considerations

PARK MANAGEMENT

- Consistent with general state parks resource management objectives and policies
- Needs to be made more consistent with long-standing recreational use goals
- May require additional support and funding for maintenance and patrols of the state recreation area

LOCAL CONCERNS

- Franks Tract is one of the most popular and most heavily used tracts in the Delta.
- Neighboring Bethel Island hosts numerous worldwide bass fishing tournaments.
- Navigability in and around Franks Tract directly affects recreation and the economic health of the local communities (Bethel Island, Oakley, and Discovery Bay), as well as regional and national users of Franks Tract
- A survey of local use of the Tract and concerns about the preliminary CDFW restoration design yielded useful information for the next, more detailed, planning and design round including a locally proposed alternative design



continued recreational management and enhancement of the area are limited. Stakeholders and management agencies could all benefit from new “resources” directed at positive change on Franks Tract.

In terms of the regulatory and management context, CDFW’s proposed restoration is consistent with the Delta Smelt Resiliency Strategy, state goals for the Franks Tract State Recreation Area, and state water quality control plans for the San Francisco Estuary. The effort also aligns with the multi-agency Delta Conservation Framework and the Central Delta Corridor Partnership.

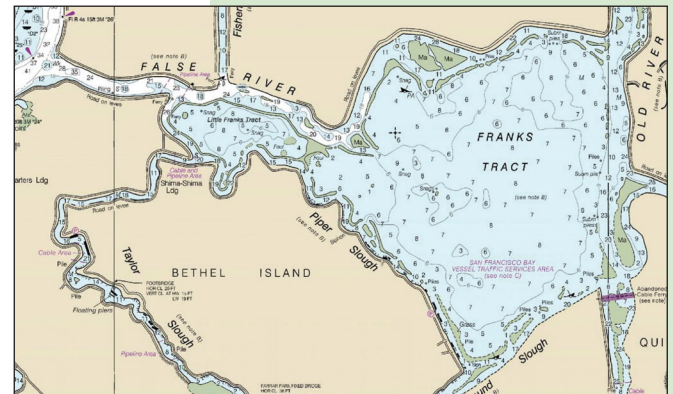
If approved for further development, the Franks Tract restoration proposal would enter a second more detailed phase of planning, design, and environmental review with a target end date of December 2020. CDFW is hopeful that it can continue to work with local communities and stakeholders to find a configuration of new berms, marshes, sloughs and channels that not only addresses state habitat and water quality priorities, but also enhances recreational and sport fishing opportunities.



2. Introduction

Franks Tract is located in the heart of the Delta near the confluence of the Sacramento and San Joaquin Rivers. This 3,000 acre flooded island is a hot spot for invasive plants and predatory fishes, as well as a conduit for saltwater intrusion into waterways used to convey freshwater supplies to cities and agriculture in the Delta and other parts of California. Franks Tract is also one of the least subsided, and largest, flooded islands in the central Delta and a strong candidate for partial restoration.

Islands with conditions like Franks Tract are a microcosm of many of the larger problems pervading the inner Delta and confounding efforts to save endangered fish. While Delta smelt and other native fishes are in serious decline, improving the quality of available habitat and increasing resilience to drought and climate change could still support their persistence and recovery. Improving conditions could also help other important pelagic species such as striped bass and other natives such as Sacramento splittail and tule perch.

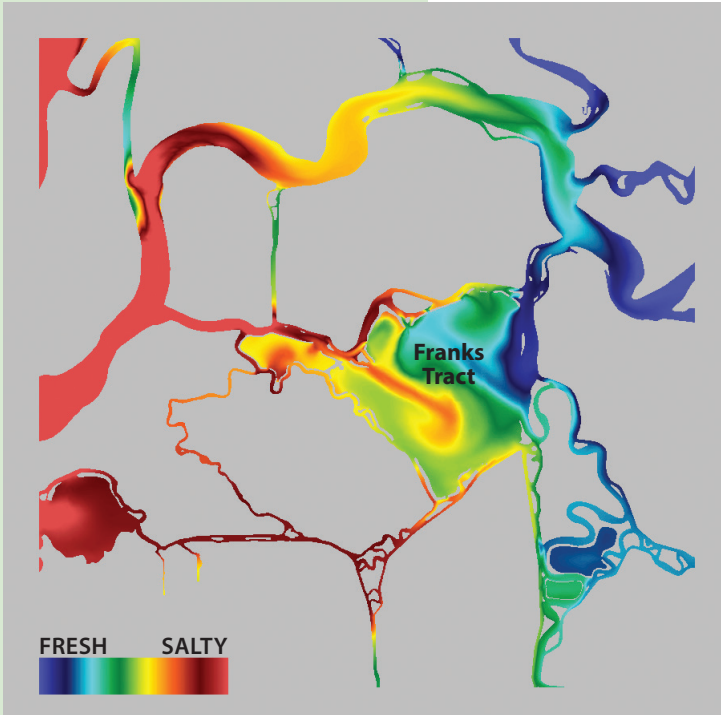


Franks Tract

Current estuarine fish habitat restoration plans around the Delta focus on Suisun Marsh, the Yolo Bypass and the North Delta Arc near Cache Slough (see map p. 16). Restoration efforts to date have avoided major changes to the subsided and flooded islands of the central Delta because it is such a challenging environment. Altered waterways, aging levees, subsided landscapes, invasive species, warm summer temperatures, and human uses all interact to make this a difficult part of the Delta to try to establish conditions more supportive of native fish.

Over the years, state and federal agencies have investigated and suggested a variety of alternatives for improving conditions at

Franks Tract. Most proposals have been made from the perspective of water supply, and have suggested building various gates and operating them to protect water quality at the water pumps in the south Delta. Yet, few if any of these former proposals have addressed long-term sustainability and native species needs.



Flood tides push salt water (red) into Franks Tract and the Old River connection (yellow) to the water export pumps.

This report summarizes recent steps on a variety of levels to explore the possibility of restoring and improving Franks Tract in a way that benefits natural resources, water quality, and local communities. Over the last 18 months, the California Department of Fish and Wildlife (CDFW), working with other state agencies and experts, has developed a Franks Tract multi-benefit restoration approach that would restore the western third of Franks Tract to tidal marsh and deepen and reshape the remaining flooded acreage (see Section 3). This approach would yield about 1,000 acres of tidal marsh, including channels and edges, and about 2,000 acres of deeper open water habitat. The concept also includes a new berm that would block salinity intrusion into the central Delta and provide more edge habitat for locally important sport fish.

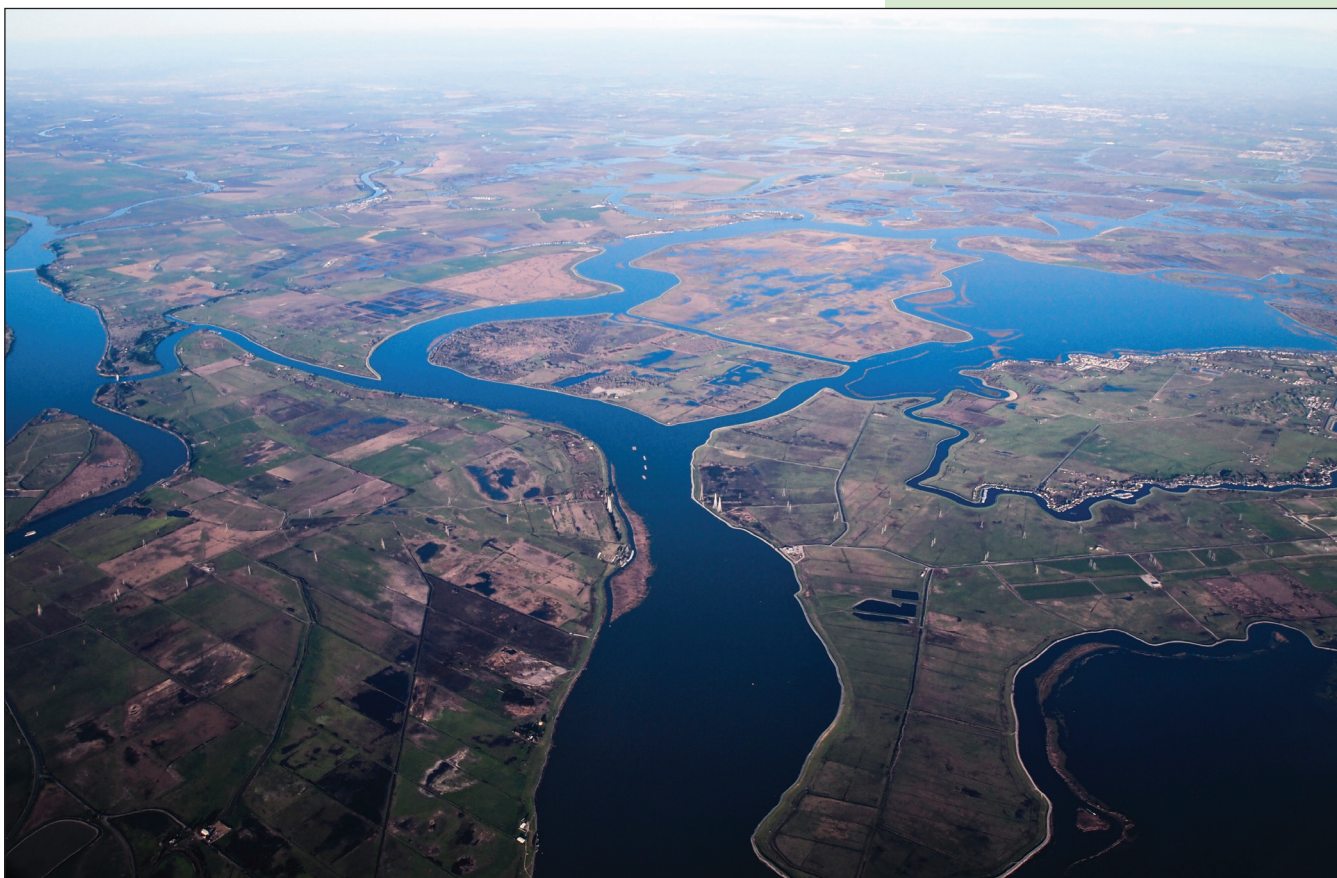
As this conceptual restoration approach evolved, CDFW and its partners went through the following stages.

- Analysis of potential changes to local hydrodynamics, central Delta water quality, and conditions in surrounding channels frequented by boaters, anglers and hunters (see Section 4).
- Analysis of the feasibility of actually constructing the project (see Section 5).
- Consultation with the California Department of Parks and Recreation (DPR/State Parks), the owner and manager of most of Franks Tract.
- Review of State Parks' initial concerns about the project (see Section 6).
- Preliminary survey of how local boaters, anglers, hunters, and communities use Franks Tract.
- Review of local communities' initial concerns about the project, and their proposed modification of the CDFW restoration concept (see Section 6).

This report summarizes what was found at each of these stages in an effort to provide a strong foundation for proceeding to the next level of planning. The next level would involve moving from conceptual to actual restoration design, and into a more detailed balancing of state resource management priorities, stakeholder concerns, and local

recreational uses and economics. Once a detailed restoration plan is developed, including an evaluation of alternatives, the plan would proceed through an EIR and permitting process and seek funds for construction and maintenance.

Throughout this continuing process, it is the intent of state agencies to be collaborative and considerate of local concerns to the greatest extent feasible within the constraints of meeting their water quality and native fish restoration objectives, and in keeping with community engagement goals outlined in the multi-agency Delta Conservation Framework. A key element in future planning, for example, will be more detailed evaluation of the locally proposed restoration approach.



In sum, this report invites stakeholders to consider a bold, sustainable change in the heart of the Delta. It shows the potential benefits of this change for native fish, the Delta ecosystem, and California's water supply, and also recognizes the recreational uses of the region upon which local communities rely.

At this stage, it is appropriate to work with all stakeholders to try to create as many benefits as possible for both human uses and the Delta ecosystem. Whatever the resulting final configuration, implementing this ambitious change in the Delta landscape is sure to improve conditions in the water and on surrounding landscapes in many ways and help both estuarine species and humans adapt to changing environmental conditions, drought, and rising sea levels.

Franks Tract lies just northeast (right top corner of photo) of the confluence zone of two massive rivers in the Delta that flow into the San Francisco Estuary: the Sacramento River (channel far left of photo) and the San Joaquin River (channel middle of photo).

Photo: Christina Sloop, CDFW

The islands were likely named after John C. Franks, owner of Franks Dredging Company and a fleet of dredges. Franks purchased and reclaimed various Delta properties between 1898 and 1902, including Franks Tract. Since 1959, the California Department of Parks and Recreation has owned most of the Tract.

Setting

Franks Tract (3,000 acres) and Little Franks Tract (330 acres) are two flooded islands located in northwest Contra Costa County. The former is bordered by Webb Tract to the north, Mandeville Island to the east, and Bethel Island and Holland Tract to the south. The western extent of the area along West False River consists of Little Franks Tract.

Franks and Little Franks Tract were once part of a larger tidal marsh that included Bethel Island, Bradford Island, Jersey Island, and Webb Tract. False River, a large blind tidal slough at the time, drained the marsh. In the natural setting of the marsh landscape that once permeated the Delta, channels were often meandering, narrow and shallow. Native estuarine fish like Delta smelt and juvenile salmon found food and sheltered habitats in these channels, marsh edges, and adjacent open waters.

Humans diked, drained, and reclaimed Franks Tract marshlands between 1902 and 1906. On Franks and Little Franks, the reclaimed land was used for farming of potatoes, beans, asparagus, sugar beets, onions, seed crops, small grains, and corn. Peat was also harvested for national distribution. In February 1937, portions of the levee surrounding Franks Tract gave way, flooding the farmland. Local landowners soon reclaimed the Tract, but in February of 1938 the False River levee broke, flooding Franks Tract again. After that, it was never reclaimed. Little Franks Tract survived the 1937 and 1938 floods, but flooded in January 1982 and was also not reclaimed. During World War II, the Navy used the area for bombing practice.

In terms of the historic Delta landscape, the reclamation fundamentally altered its character by creating the islands and eliminating, straightening and connecting its historic dendritic dead end channels. The increase in interconnectedness, along with subsequent flooding of subsided islands like Franks and Little Franks Tract, has doubled the area of open water habitat in the Delta, changed tidal circulation patterns, reduced water residence times, and increased flow velocities. These changes have also reduced food web production, shelter, and habitat complexity for aquatic species throughout the Delta (Delta Transformed, SFEI, 2014).

Franks and Little Franks Tracts are currently tidal shallow water habitat surrounded by remnant levees. They are managed as a 3,532-acre State Recreation Area. Due to the limited land base, lack of public access to shorelines, exposure to strong winds, and shallow fluctuating water level, recreation use is limited primarily to anglers, waterfowl hunters, and boaters. Proximity to this large open water area has led to the growth of small communities and marinas on neighboring Bethel Island. Those with boats use breaks in

surrounding levees to access fishing and hunting areas, and as shortcuts to other waterways and points of interest.



While boaters, hunters, and anglers clearly value the open waters of Franks Tract, the ecological and water quality problems of this island are now impinging on the greater Delta and California water uses. Today, both Franks and Little Franks are full of non-native submerged and floating aquatic weeds. In terms of hydrodynamics, Franks Tract also now connects many waterways that were never connected in the vast historic marshlands of the Delta. The biggest problem is the direct connection provided by Franks Tract between the lower San Joaquin River and Old River through False River. This allows salt water and fish to be drawn into the south Delta. Most of the fish currently in Franks Tract are non-native fish species, particularly largemouth bass, striped bass, and sunfishes. The prevalence of invasive plants and the associated predatory fish community (Grossman 2016) make the area poor habitat for native species such as Delta smelt and juvenile salmon.

Franks Tract is the engine that supports the Bethel Island community and economy. Since it was flooded it has become a recreational focal point for the central Delta, used by boaters, water-skiers, fishermen and waterfowl hunters. Today the Sacramento-San Joaquin River Delta is ranked in the top 10 black bass fishing waters in the United States. In 2016, one hundred and thirty-three bass tournaments were conducted from Bethel Island and the surrounding marinas. The question now, for those trying to save native species and protect the added value of introduced species (such as bass fishing), is whether and how management actions can enhance both resources? Reconciling these historic and current uses of Franks Tract will require participation of all interests. Photo: Courtesy FLW/David A. Brown

PROBLEM

DECLINING DELTA SMELT DELTA

The Delta smelt is a small (120 mm), short-lived (1-2 years), native fish that only occurs in the San Francisco Estuary. This semi-anadromous species spawns in fresh water and rears in fresh to brackish water. The Delta smelt's continued existence is dependent upon its ability to successfully grow, develop, and survive in the Estuary. Once abundant, it is now rare. Steep declines in its population in the early 1980s lead to its listing as a federal threatened and state endangered species in 1993. Despite a rebound during the wet period in the late 1990s, a more widespread pelagic organism decline (POD) of four open water species followed in 2002, including further drops in smelt abundance. A jump in abundance of all life stages in 2011, however, suggested that the Delta smelt population can rebound when conditions are favorable for spawning, growth, and survival. Scientists attribute Delta smelt declines to a variety of factors. Primary management efforts to protect smelt and other POD species have focused on maintaining adequate outflows, reducing water diversion losses, and restoring habitat.



FRANKS TRACT

This large flooded island in the central Delta currently epitomizes conditions unfavorable to Delta smelt and other native fishes such as salmon. Rather than offering marshes flooded daily between tides and plentiful zooplankton — good smelt habitat and food — invasive plants that reduce turbidity and harbor predatory fish dominate the Tract. Researchers have identified Franks Tract as a predator hot spot within the Delta (Grossman 2013). In addition, tidal flow through the Tract can move turbid water in the lower San Joaquin River into the Tract and Old River. Elevated turbidity can facilitate the movement of smelt into Franks Tract and toward the export pumps. In recent years, fish trawls in Franks Tract and the surrounding region have yielded very few Delta smelt, largely because their populations are so low. However, Franks Tract is still part of the habitat of this endangered estuarine fish and can be improved.

FIX

More marsh with dendritic channels to increase the amount of channel margin, residence time, and food supply; fewer invasive weeds.

Current State Goals for Delta Smelt Resilience

The CDFW restoration approach for Franks Tract presented here is based on the goals, objectives and actions recommended in the Delta Smelt Resiliency Strategy completed by the State of California in July 2016.

The Strategy is a science-based document prepared by the state to address both immediate and near-term needs of Delta smelt voluntarily, and to promote their resiliency to drought conditions as well as future habitat variations.

The Strategy relies on intensive, interagency, science modeling and research conducted in 2015 and compiled in the Interagency Ecological Program Delta Smelt Management, Analysis, and Synthesis Team (MAST) Synthesis Report. This research helped articulate a suite of actions to be implemented in the near future to benefit Delta smelt. State agencies in line to implement this Strategy include the Department of Water Resources, the Department of Fish and Wildlife, the Division of Boating and Waterways, or others. A team of state and federal agencies, water contractors and NGOs (called the Collaborative Science and Adaptive Management Team) developed an assessment framework that will be used to assess the outcomes of these actions individually and synergistically over time.

The Strategy's primary objective is positive population growth (>1) for the Delta smelt. Goals for achieving this objective are:

Goal 1: Improved Delta smelt vital rates including:

1. Higher population growth rates.
2. Higher fecundity levels.

Goal 2: Improved habitat conditions including:

3. Increased habitat area
 1. Increase of small dendritic channels in restored marsh
 2. Increase of shallow turbid areas along channel margins
4. Improved habitat quality
 1. Increased food resources
 2. Higher turbidity
 3. Reduced levels of invasive species (e.g. weeds, predators).
 4. Reduced levels of harmful algal blooms.

These goals build on Delta smelt conceptual models developed by the MAST Team (IEP 2015), and are consistent with several other models developed to date (Miller 2011). The models have a tiered structure with Delta smelt performance (e.g. survival, growth, condition, fecundity) determined by habitat attributes, environmental drivers, and landscape attributes.

Many of the Strategy's recommended near-term management actions for making Delta smelt more resilient are reflected in the restoration and renewal proposal for Franks Tract, and addressed in the associated engineering feasibility study and hydrodynamics modeling work (see Appendices). According to this preliminary evaluation, the Franks Tract restoration approach would benefit all life stages of the smelt, and improve habitat conditions (food availability, turbidity/visibility, and predation risk).

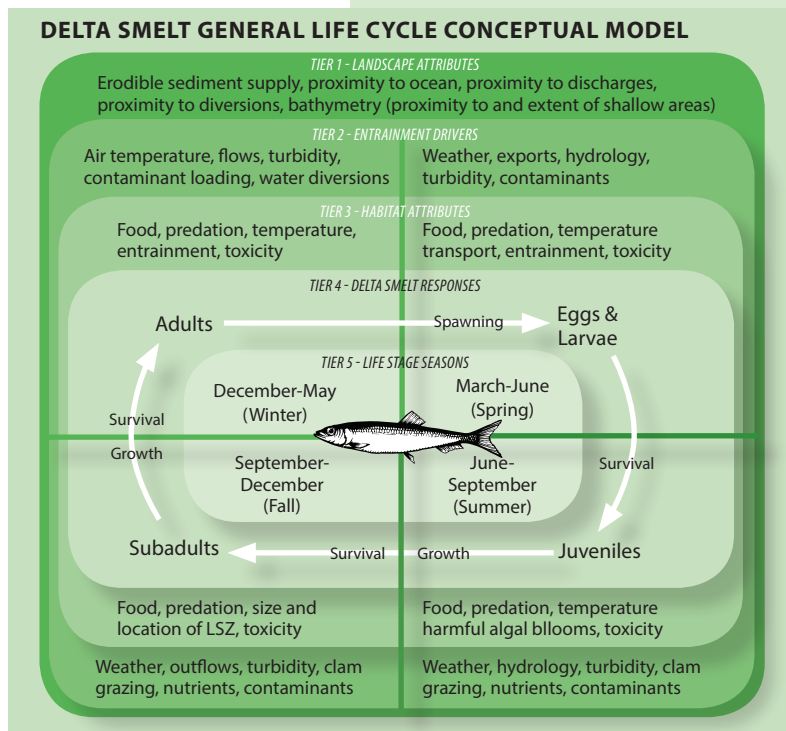
Prior State and Federal Goals

Various past investigations and plans developed on the part of those planning for Delta water quality and ecological health offer important context for this new restoration approach, and call out Franks Tract as a key target for improvement.

In the late 1990s, the CALFED Bay-Delta Program, a cooperative interagency effort composed of 25 state and federal agencies, began a comprehensive analysis of potential solutions to the ecosystem restoration, water quality, water supply reliability, and levee system integrity problems of the San Francisco Estuary. In August 2000, CALFED issued a programmatic record of decision that identified three interrelated projects in the north and central Delta to improve water quality and fish protection. These included modifications to Franks Tract, creation of a Through-Delta Facility (a water diversion corridor, isolated facility or tunnel), and reoperation of the Delta Cross Channel (gates and a channel used to move high quality Sacramento River water south to the water projects).

The purpose of these three interrelated salinity improvement projects was to:

- reduce the tidal mixing of waters from the western Delta into Franks Tract and the central Delta;
- isolate the freshwater corridor along Middle and Old Rivers from the western Delta waters;
- increase the transfer of water from the Sacramento River to the central Delta, thus improving flow conditions in the western San Joaquin River.





When not clogged with invasive weeds and clams, shallow water habitat supports a wide range of ecological functions and food webs in the Delta. The Interagency Ecological Program regularly samples the shallows for small fish and invertebrates using a beach seine net dragged through the water by hand. Photo courtesy IEP

At the time, it was clear that reducing tidal mixing and the interconnectedness of some channels and flooded islands, especially Franks Tract, could improve Delta circulation patterns and water supply reliability. It was suggested that such steps would also reduce fish entrainment and salinity levels at the water supply diversion and export facilities of the Contra Costa Water District, the State Water Project, and the Central Valley Project. These concepts and ideas remain relevant to the current restoration approach. Franks Tract was, and remains, central in these and other Delta fixes proposed in the past because it has such a strong effect on flow patterns based on its connections to the rest of the Delta by False River, Fisherman's Cut, Old River, Holland Cut, Sand Mound Slough, and Piper Slough.

The CALFED effort also included “the Flooded Islands Investigations” by the Department of Water Resources. These investigations identified Franks Tract as the most effective place, among three flooded islands examined, to make modifications aimed at improving water quality in the south Delta. Proposed modifications included constructing and operating one or more operable barriers in and around the Franks Tract area. Investigations also examined the effects of such modifications on channel velocities, circulation, and water residence time in Franks Tract and the central Delta.

One of the alternative approaches further examined involved installing an operable barrier on West False River. The alternative aimed to create a longer path for salt water to reach south Delta export facilities via Old River. In general, when tidal flow in False River is unimpeded, Franks Tract acts to inject salt in the Delta and creates a shorter path for saline water to the export facilities (see diagram p. 8). With the tidal flow in False River blocked, the high-salinity water is instead shunted on the flood tide farther up the San Joaquin River, and around Bradford Island and Webb Tract.

It should be noted that since CALFED first proposed this barrier, it has actually been installed and later removed. After years of drought, installation of the 2015 emergency salinity barrier was a last resort but succeeded in limiting salinity intrusion (see also p. 26).

Early data and modeling results from these previous flooded island and Delta conveyance investigations (see References) helped inform the development of the current design of the CDFW's Franks Tract multi-benefit restoration approach. The latter suggests a more permanent, more natural solution than expensive emergency barriers or operable gates, addressing some of the same challenges by reconfiguring the landscape and disconnecting channels from critical freshwater flow paths.

Delta Conservation Framework and Central Delta Corridor Partnership

The restoration and renewal approach described in the following pages suggests a bold, sustainable change in the heart of the Delta that is in keeping with current and emerging state priorities. The project offers a model of the kind of larger scale approach based on natural physical processes recommended in *A Delta Renewed* and the Delta Conservation Framework (see Section 3).

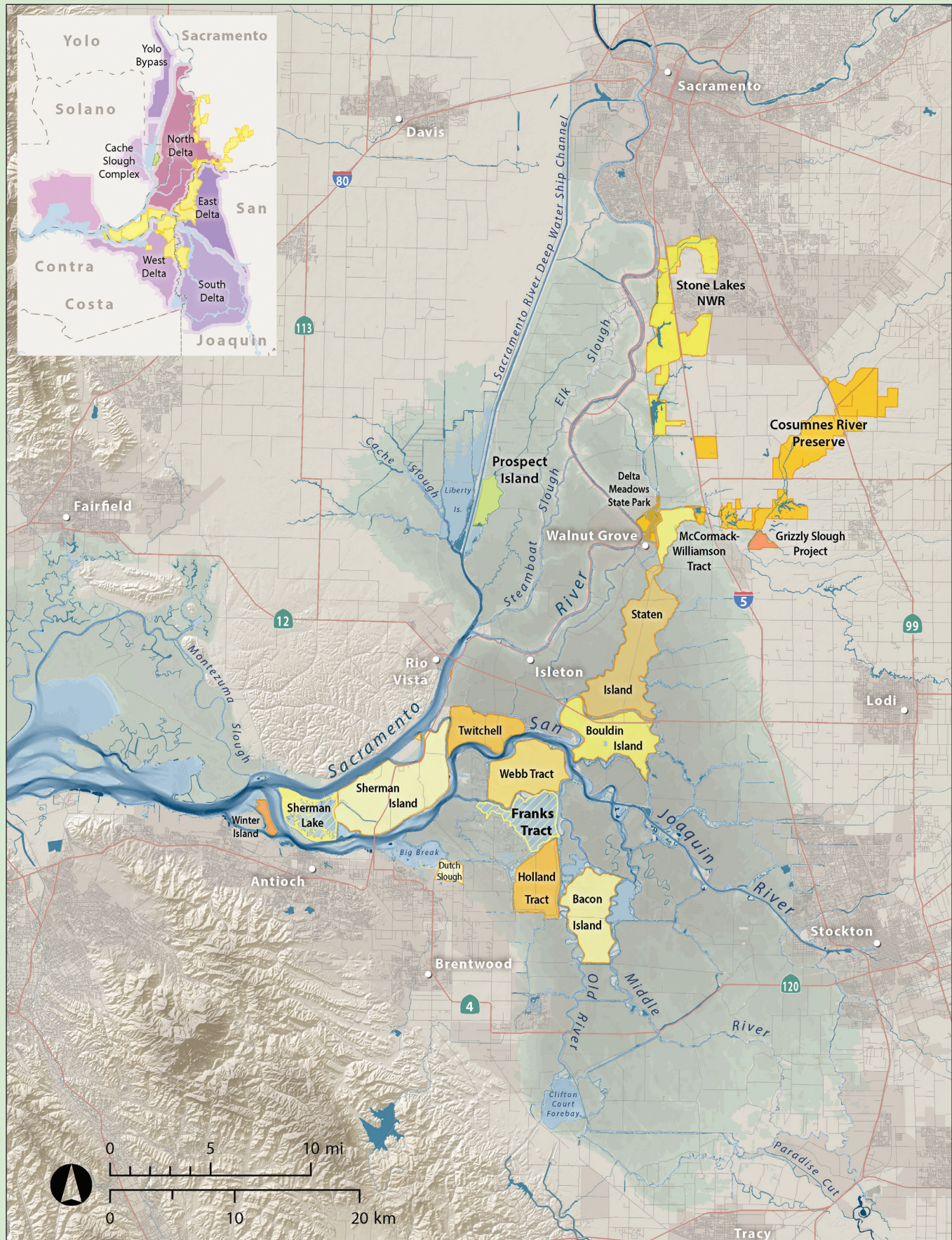
Three Delta Conservation Framework goals that this restoration vision and proposed process for future planning address are as follows (Goal B not referenced):

- GOAL A: Integrate regular stakeholder communication and socioeconomic considerations into Delta conservation planning, implementation, science, and adaptive management processes.
- GOAL C: Develop multi-benefit focused conservation and land management solutions to balance environmental and human needs.
- GOAL D: Conserve ecosystems and their ecological processes to promote function to benefit society and natural communities, and improve conditions for species recovery.

The restoration approach proposed for Franks Tract also complements a larger conservation vision being explored by the Central Delta Corridor Partnership. The Partnership consists of the owners of public, and publically financed lands, interconnected throughout the central Delta from north to south, forming a conservation lands corridor (see map next page). In the north and northeast areas, lakes, floodplains, and tidal wetlands within the Stone Lakes National Wildlife Refuge, Cosumnes River Preserve, and the Cosumnes- Mokelumne river confluence characterize the corridor. Southward, the corridor encompasses deeply subsided islands (Staten, McCormack-Williamson Tract, Bouldin, Webb, Holland, Bacon, Twitchell, Sherman, and Decker) and the flooded Franks Tract State Recreation Area.

The Partnership's vision includes controlling invasive species, improving habitat for endangered Delta smelt and salmon populations, and supporting recreational boating, fishing, wildlife viewing, and waterfowl hunting, among other priorities — all elements of the Franks Tract restoration approach.

Central Delta Corridor of Public Lands & Target Restoration Zones



Variable yellow colors distinguish different tracts, islands, and properties in this public lands corridor. Inset: Core target areas for landscape scale restoration in the Delta. Map: Amber Manfree



3. Restoration Approach

Over the last 18 months, the California Department of Fish and Wildlife (CDFW) has developed a conceptual design approach for how to restore and renew Franks Tract and Little Franks Tract. This preliminary approach is based on past investigations, consultation with scientific experts in the region, near-term actions called for in the Delta Smelt Resiliency Strategy, new recommendations from the San Francisco Estuary Institute's *A Delta Renewed*, and the long-term Delta conservation vision outlined in the Delta Conservation Framework. CDFW's conceptual design approach described below also includes some preliminary modifications to address early stakeholder input. Additional input and local concerns (see Section 6) will be considered as part of a subsequent multi-stakeholder planning process if and when the restoration concept is approved for further development.

The goals and objectives of the CDFW restoration approach for Franks Tract are:

BIOLOGICAL

- Enhance habitat conditions for Delta smelt and other POD and native fish species.
- Minimize habitat conditions for non-native fish and invasive plant species (submerged or floating aquatic vegetation aka SAV/FAV).
- Create elevations to foster establishment of large area of emergent marsh vegetation.
- Minimize entrainment of Delta smelt into Old River and south Delta.

PHYSICAL

- Modify tidal circulation to create conditions similar to historic conditions (pre-reclamation) so that tides both enter and exit primarily through False River.

New Tidal Marsh Creates Sustainable Salinity Barrier in West False River



KEY ELEMENTS OF THE DESIGN

- A large berm across Franks Tract.
- A small berm that blocks the West False River, preventing tidal circulation with the eastern side of Franks Tract and Old River.
- 20 million cubic yards of fill material, dredged from the Tract and/or sourced from Decker Island.
- Raised bed elevations approximately 1-3 feet above sea level (NGVD) to produce mid-marsh within 170-acre and 61-acre areas of Little Franks Tract, as well as over a 748-acre area in the western portion of Franks Tract bounded by the new berm.
- Channel features in the new mid-marsh plain.
- High marsh, with an elevation range from 2-5 feet above sea level (NGVD), along the berm.
- Deepened and enhanced open water habitat on up to 2,600 acres on the east side of the berm.

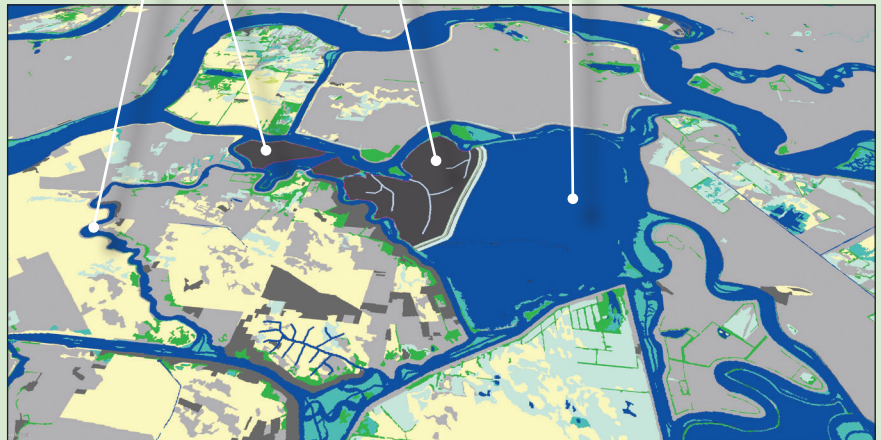


Photo: Christina Sloop, CDFW
Map: SFEI

- Create pilot channels that can be extended and shaped by natural tidal processes.
- Eliminate tidal flow through Franks Tract into Old River.
- Create conditions to enhance turbidity through wind wave action both onsite and downstream.

WATER QUALITY

- Limit salinity movement through Franks Tract to Old River
- Increase water residence time in newly created channels and False River.

MULTI-BENEFITS OR ECOSYSTEM SERVICES

- Reduce levels of invasive submerged aquatic vegetation
- Maintain and potentially enhance recreational uses
- Diversify and enhance habitat for sportfish

The objective of the CDFW restoration and renewal approach for Franks Tract is to establish a large area of intertidal marsh with channels, eliminating the existing open water and submerged aquatic vegetation in the restored area. Accomplishing this would require filling the restored area. Franks Tract is currently subsided 8-10 feet below Mean Sea Level. Water depths at the lowest tide range from 6-8 feet (MLLW). Re-establishing tidal marsh and associated channels would require raising selected areas 8-10 feet (see Section 5).

CDFW Conceptual Restoration Approach



In general terms, the CDFW restoration approach would divide the Tract in two, building a berm so that marsh could evolve on one side, and enhancing open water habitat on the other. The approach would restore more than 900 acres of intertidal habitats, marsh and channels within Franks Tract and Little Franks Tract. About 2,200-2,600 acres of shallow and deep open water habitat would remain on the Tract. Recreational access would be maintained. The restoration approach would also block False River permanently, improving water quality conditions and reducing salinity intrusion in the central Delta but restricting navigation through West False River to surrounding areas from Bethel Island.

PROBLEM

INFESTATION BY INVASIVE SUBMERGED AND FLOATING AQUATIC VEGETATION

DELTA

Invasive aquatic plants have far-reaching impacts on the Delta ecosystem and are now widespread. The total invaded area in the Delta (submerged and floating aquatic vegetation, or SAV and FAV) has increased from 5,000 acres in 2008 to 16,000 acres in 2014 and almost 17,400 acres in 2015 (Khanna et al. 2016). Invasive aquatic plants have changed shoreline habitat in the Delta by slowing water velocities and increasing water clarity, conditions which further their spread (Hestir et al. 2016). This dense mat of vegetation can also offer largemouth bass places to hide and hunt. Meanwhile, native species like Delta smelt, who like to stay in open water, are more vulnerable to attack in clearer waters. Such effects can propagate up and down the food chain, affecting the entire ecosystem. Invasive aquatic plants also impede boat travel and often require mechanical removal or chemical spraying to control. Prolonged drought has likely increased shallow habitat with slow moving water ideal for aquatic weeds. A new threat to emerging marshes is water primrose (Ludwigia spp.), whose area has increased many-fold in the central Delta and the Liberty Island Cache Slough complex since 2004 (Ustin et al. 2017).



FRANKS TRACT

Submerged aquatic weeds in the central Delta increased each year from 2014-2017 (Ustin et al. 2017, Khanna: personal communication). More specifically, Franks and Little Franks Tracts are heavily vegetated by aquatic weeds including Richardson's pondweed (Potamogeton richardsonii), Brazilian waterweed (Egeria densa), and water primrose (Ludwigia spp.). Recent drought conditions may have promoted this growth. When the emergency barrier was installed and removed in 2015, changes in the movement of water within the Tract also changed the orientation and location of weed patches (see map p. 24), worsening it in some areas and clearing it up in others. The state has been spraying Franks Tract with the aquatic herbicide Fluridone since 2006, targeting Egeria. Over the last five years, measures of native plant species diversity indicate some promising results of continued herbicide management. At present, however, aquatic weeds remain a key reason that Franks Tract supports more non-native than native fish species.

FIX

Change topography, deepen some areas to more than 21 feet (Morgan et al. 2018, and Thayer et al. 2018) and raise others so that conditions are not conducive to submerged and floating aquatic vegetation. (Shallower areas would still support submerged aquatic vegetation and associated fish species).

Photo: Brazilian waterweed, courtesy Shruti Khanna.

The current approach builds on an earlier alternative design, which called for a large berm with a very gradual beach on the west side, on the alignment of the remnant levee along Old River. This earlier approach also included a much larger fraction of Franks Tract. Based on the hydrodynamic model, this variant produced changes in tides and regional salinity similar to those of the newer design. The earlier design didn't, however, prove as advantageous for native fish because it left large areas of shallow water dominated by aquatic weeds and did not include any significant tidal marsh or increase in habitat complexity. The newer approach creates three dead-end channels in the restored marsh to focus tidal energy and increase exchange between the marsh plain and adjacent open water.

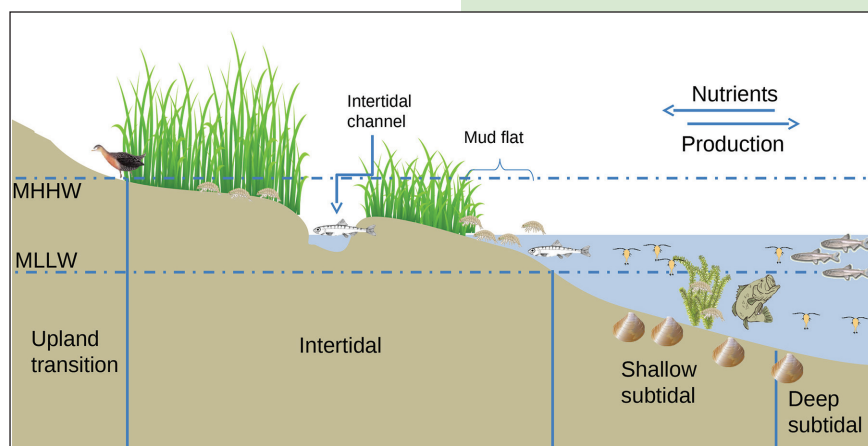
To size the higher order channels in Franks Tract, CDFW used guidelines from the Dutch Slough Tidal Marsh Restoration Revised Conceptual Plan (ESA PWA, 2010). The bed of the tidal channels was positioned at existing grade almost everywhere. This approach will reduce costs, establish the drainage pattern for the marsh, and produce elevations typical of natural tidal marshes. By comparison, the restoration design for Little Franks Tract is relatively simple, with fill placed to establish marsh plain elevations in the western and eastern halves and maintenance of existing bathymetry between the breaches to False River on the north and Piper Slough to the south.

The final configuration will be subject to refinement based on more detailed planning including consideration of the locally proposed restoration approach, stakeholder, and management input (see Section 6).

Rationale for Re-establishing Tidal Processes on Flooded Islands – Delta Renewed Applied

Over the last decade, the San Francisco Estuary Institute has developed the technical and scientific basis for a suggested approach to restoring the Delta with support from CDFW. Based on input from twelve academic and government science advisors, three sequential reports outline the Delta's past and present conditions, and suggest restoration approaches focused on harnessing the remaining natural physical processes in this much-altered and re-engineered system for the future. The Franks Tract restoration approach applies the recommendations in *A Delta Renewed* for flooded islands and former marsh.

As described above, a key component of the proposed restoration project is to re-establish a diversity of aquatic habitat to the site. Achieving this habitat heterogeneity and complexity will also require the re-establishment of blind channels that help drain the tidal marsh and provide food web nutrients that can flush into larger channels to support native fish species such as Delta smelt.



*Intertidal habitat zones.
Source: Hartman et. al, 2017*

CDFW applied the restoration metrics shown in the sidebar below in developing a conceptual restoration approach for Franks Tract. Metrics are drawn from "Landscape Configuration & Scale Guidelines" and "Physical Process Guidelines" set forth in *A Delta Renewed*. The guidelines were also used in building the State's 30-year Delta Conservation Framework.

It is critical to achieve these metrics before new marsh sediment accretion is no longer able to keep pace with rising sea levels naturally (Baylands Goals Climate Change Update 2015). Marshes maintain themselves in relation to sea level by trapping inorganic matter in the form of sediment and accumulating organic matter as plants decompose. However, the amount of sediment passing through, or re-suspended, in the Delta has been decreasing over the last decade (both because historic hydraulic mining deposits are finally washing out of the estuarine system, and because eroded sediment is now trapped behind dams, levees, rip rap, and concrete). As sediment supply is so low, vertical accumulation via the build up of organic matter (such as eventually forms peat) is becoming increasingly important for marsh sustainability.

The Franks Tract restoration approach both adds inorganic sediment and provides intertidal elevations necessary for marsh plant growth. These two steps are designed to speed marsh establishment and provide for long term resilience to rising sea levels.

Applying Delta Renewed Metrics to the Franks Tract Restoration Approach

MARSH METRICS AND GUIDELINES

- Marsh patch size:** *Tidal marshes should be as large as possible to support a range of ecosystem functions.*

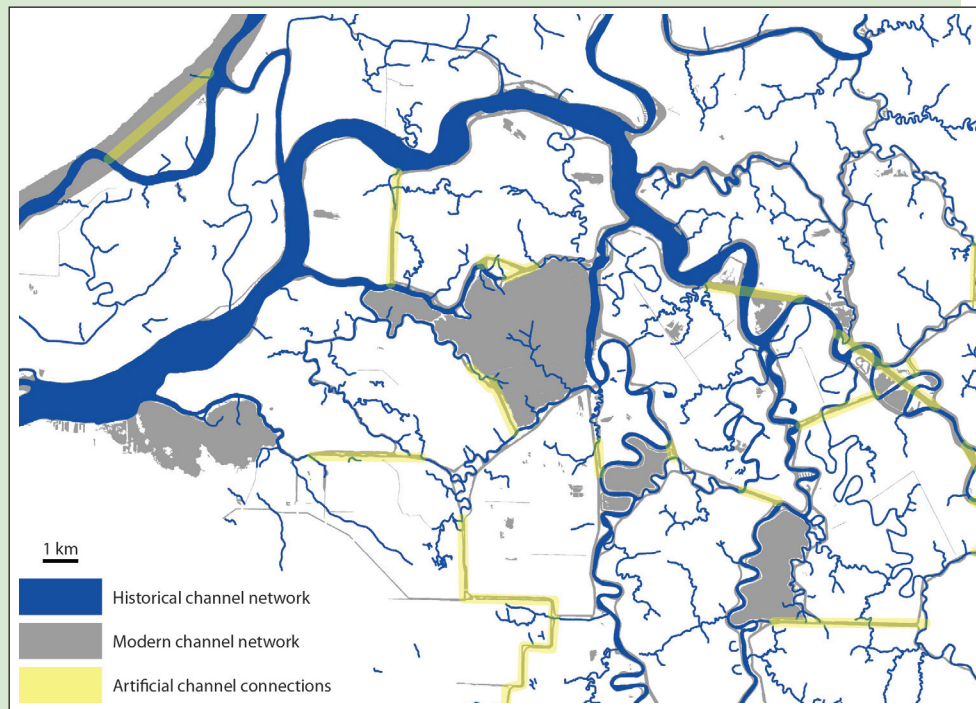
The Franks Tract restoration approach would restore marshes in three areas to create two significant marsh patches, together totaling more than 900 acres. The larger patch would be more than 800 acres in size, which is large enough to support a significant portion of an extensive blind channel network and the maximum density of California black rails, a rare bird species used as a barometer of marsh health. At 170 acres, the smaller patch is not large enough to support a significant channel network, but would still be expected to support nesting black rails and tricolored blackbirds and contribute to the local foodweb, among other ecosystem functions.

- Marsh nearest large neighbor distance:** *Restoration plans should aim to decrease the nearest neighbor distance of Delta marshes and increase the proportion of marshes that occur in close proximity to large marshes, taking into account the dispersal distances of native animals.*

The large marshes created by the Franks Tract approach will dramatically reduce the nearest large neighbor distance for nearby marshes, including those in Sand Mound Slough and at Mandeville Tip, as well as the planned restoration at Dutch Slough. The Franks Tract restoration would be within reach of rails dispersing from all three of these sites, allowing for increased levels of genetic and demographic connectivity and improved meta-population viability. The restored blind channels embedded within the Franks Tract marsh network would also be located less than 15 km from Sherman Island, potentially allowing juvenile salmon from the Mokelumne and San Joaquin rivers to move between the two sites in less than a day on their way out of the Estuary.

- Marsh core area ratio:** *Marshes in the Delta should have more core habitat than edge habitat, because core habitats experience unique abiotic conditions, are less accessible to many predators of marsh wildlife, and are more buffered from human disturbance in the modern landscapes.*

The relatively large and compact marshes created in the Franks Tract approach will create more than four times more core habitat than edge habitat.



Source: SFEI

- Marsh-water ratio:** *Increasing the ratio of marsh to open water habitat through restoration projects has the potential to increase the availability of marsh-derived primary productivity to support the aquatic foodweb.*

By expanding the amount of marsh habitat and decreasing the amount of open water, the Franks Tract restoration approach will nearly quadruple the local ratio, from less than 1:10 to more than 3:10.

CHANNEL METRICS AND GUIDELINES

- 1. Blind channel creation:** *Previous reclamation activities have homogenized the Delta landscape by eliminating marshes, deepening major channels, and increasing the interconnectedness of the system. Many formerly blind channels are now connected to each other via cuts, reducing the variability in local habitat conditions.*

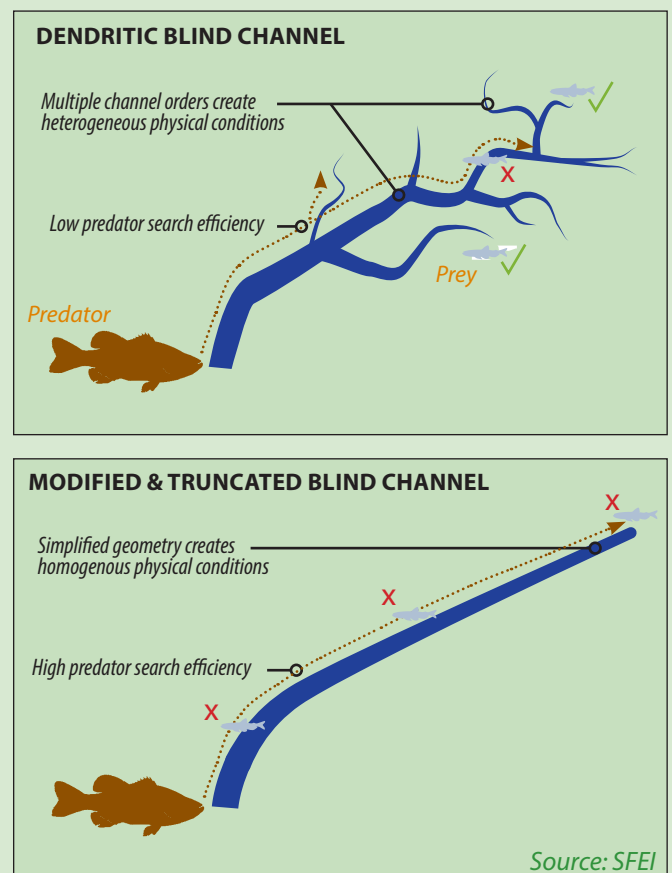
The Franks Tract restoration approach would reverse this trend by disconnecting False River from the flooded part of Franks Tract and blocking the False River between Franks Tract and Webb Island. In addition to the more than 2.85 miles of new low-order blind channels to be created within the restored Franks Tract marsh, approximately 2.5 existing miles of False River will be converted from a flow-through channel to a blind channel. Together these actions will increase the blind to flow-through channel ratio.

- 2. Blind channels should be long and branching:** *Blind tidal channels should naturally develop a dendritic, branching form, with multiple channel orders. This geometry increases the length of edge between marsh and channel; contributes to heterogeneity in physical variables, such as residence time, depth, temperature, turbidity and velocity; and influences predator-prey dynamics and search patterns. Appropriate geometry between small/shallow branches and larger/deeper ones can also enhance the size, diversity and resilience of resident wildlife where branches intersect. In more general terms, blind channels that terminate within wetlands allow exchange between the marsh and deeper channel habitat, providing a kind of capillary system nurturing the marsh and slow-moving water where fish can find refuge. Blind channels should also be longer than the average tidal excursion length to recover hydrodynamic complexity and increase residence time along the full length of the channel.*

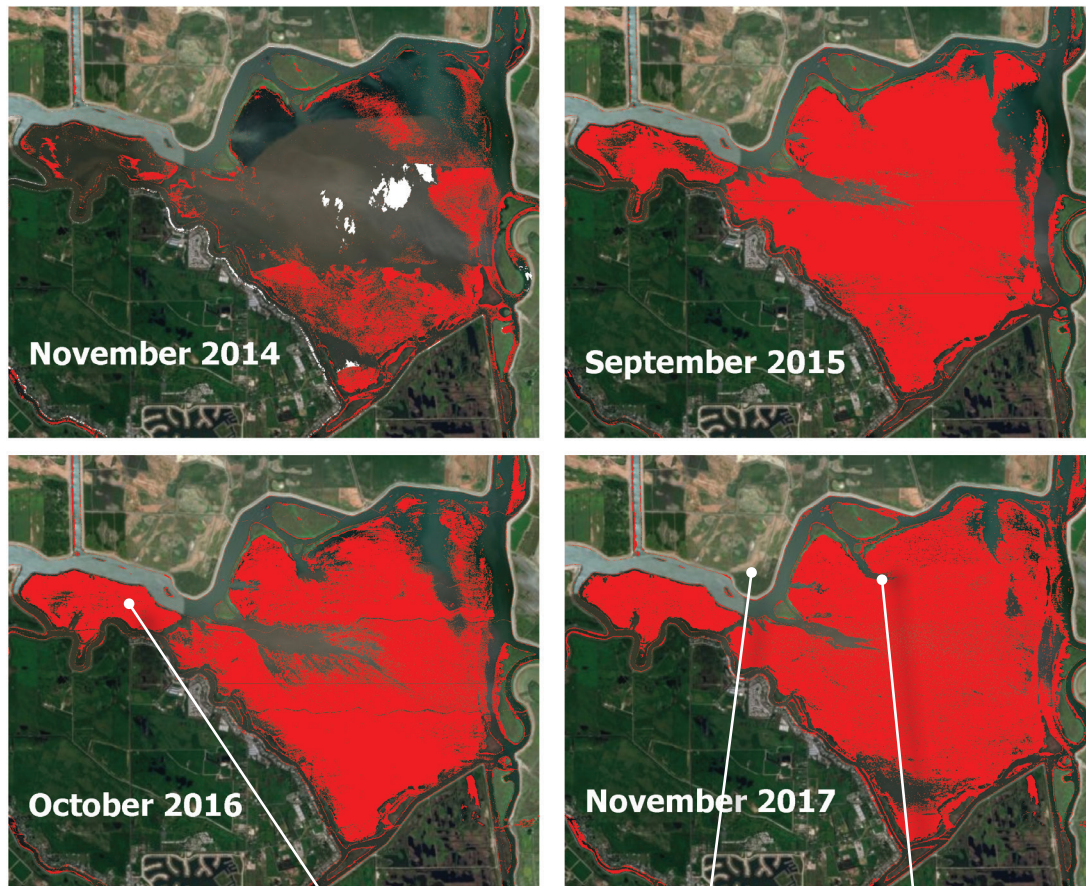
By restoring three new low-order blind channel branches (totaling 2.85 miles in length) off of the larger False River blind channel, the Franks Tract Restoration approach should help recover this functionality. The re-established False River blind channel network is expected to be longer than the local tidal excursion length, allowing for the creation of residence time gradients.

- 3. Channels embedded in marshes:** *Connectivity between tidal channels and tidal marshes is critical for the exchange of energy, nutrients, organic and inorganic material, and organisms (areas subject to this kind of intertidal exchange have decreased by 98 percent in the Delta). Channels embedded in tidal marshes contribute to gradients in physical attributes like residence time, velocity and turbidity. Smaller branches of channels also likely provide resource subsidies from the marsh to organisms like Delta smelt thought to be restricted to larger channels.*

The Franks Tract restoration approach would create new marsh plains by raising elevations to intertidal levels with sediment, and facilitate the establishment a new channel system to support the functions described above. By embedding channels within the marsh, the Franks Tract restoration approach will also increase the tidal marsh-water edge length. The 2.85 miles of pilot low order blind channels within the marsh plain would be expected to create at least 5.70 miles of associated marsh edge. As even smaller channel branches form off of the pilot channels as expected then the length of marsh edge will be even higher.



Aquatic Weeds Pervade Franks Tract



Surveys show how the patches and distribution of submerged aquatic vegetation (SAV) changed in Franks Tract after the installation of the emergency drought barrier in False River in spring 2015. The barrier forced water to travel up the San Joaquin and come in through Old River, and restricted the movement of water within the Tract. Dredging and deepening the Tract, as part of any restoration approach using local fill sources, will improve circulation and reduce aquatic weed growth in the middle of the remaining open water. Data source: Khanna et al, 2017. Photo: Birds Eye View



4. Hydrodynamic Modeling

After developing the preliminary conceptual design approach for Franks Tract restoration, CDFW engaged its partners in conducting an engineering feasibility study, as well as hydrodynamic modeling to assess how the project would affect and respond to Delta water flow dynamics, including flow direction, velocity, hydraulics, and salinity. The California Department of Water Resources (DWR) performed 3-D hydrodynamics model runs necessary to assess these potential impacts and documented them in a December 2017 report (see Appendix A).

DWR has since performed some additional modeling to examine the effects of deepening portions of Franks Tract and assess, in a very preliminary way, evolving local proposals for changes to the CDFW conceptual design. A few preliminary findings from these additional evaluations are included below but the work will be more appropriately developed in the next, more detailed, design round.

The modeling work included the following:

- Analyzing velocities in and around the restoration site during and after construction to help determine materials and construction requirements.
- Describing the likely need or benefits of hydraulic structures in remnant channels to control velocities outside the main body of Franks Tract.
- Predicting changes in tidal and net flows caused by the CDFW conceptual restoration approach.
- Anticipating salinity impacts of the CDFW conceptual approach and the locally proposed approach relative to current conditions.
- Assessing the sensitivity of regional salinity results to the presence of submerged aquatic vegetation.

PROBLEM

PROTECTING WATER QUALITY DURING DROUGHT

DELTA

During drought and dry summer months, salt water from ocean tides intrudes into the western Delta — closer to irrigation and drinking water intakes — because there isn't as much freshwater flowing downstream from rivers, runoff and reservoir releases to push it back out. When major reservoir levels are drawn down, snowpack is low, and so many Delta channels are connected to others, few options remain except to build multiple temporary barriers across key channels to keep the tides out. The state first built such barriers in the Delta during the mid-1970s drought — two in 1976 and six in 1977. In 2015, following up on modeling suggesting that a single obstruction might be less disruptive to fish habitat while still protecting water supplies, the state built the most recent barrier across the False River.



FRANKS TRACT

The West False River is the biggest, most direct channel between tides coming up the San Joaquin River, the central Delta, and numerous south Delta water diversions and the export pumps (through Franks Tract). Other pathways for salinity intrusion are smaller and more meandering. Engineers estimate the 2015 barrier kept 29 billion gallons in upstream reservoirs, instead of releasing it to maintain water quality at drinking water and irrigation intakes downstream. The barrier was 750 feet across the top and 120 feet wide at the base, and consisted of 150 tons of rock. Installation and removal cost taxpayers approximately \$37 million. These temporary rock barriers impede natural physical and biological processes still at work in the Delta ecosystem and fail to provide long term, permanent solutions to salinity intrusion problems. In addition, extended droughts and rising sea levels due to climate change will only exacerbate salinity intrusion into the Delta.

FIX

Building new berms, and adding sediment to raise elevations and create tidal marsh, would change the tidal prism and exchange through Franks Tract, and improve water quality in the central and south Delta.
Photo: Bird's Eye View

- Analyzing the synergy between the CDFW conceptual approach and three additional restoration projects that were considered most likely to cause an interaction (Dutch Slough, Prospect Island, and McCormack-Williamson Tract).

Key Conclusions from Model Simulations

1. The restoration causes local changes in flow, particularly tidal flow. The most substantial increases occur in Fisherman's Cut and on Old River between the San Joaquin River and Franks Tract.
2. Restoring Franks Tract reduces salinity intrusion into the central Delta. It potentially increases salinity on the main stem of the San Joaquin River between Jersey Point and San Andreas Landing.
3. The project may increase the water cost of California State Water Resources Control Board Decision 1641 compliance at San Andreas Landing, but this is more likely in conjunction with other projects that affect Delta Cross Channel flow.
4. The changes in hydrodynamics brought about by the project would result in an appreciable drop in entrainment of Delta smelt from sites west of Franks Tract based on particle tracking analysis.
5. Aquatic weeds inhibit circulation on Franks Tract but do not limit freshening of the central Delta as they did during the 2015 West False River emergency drought barrier installation. Weeds were important in 2015 because Franks Tract still received higher salinity water from Fisherman's Cut and False River leakage. The salinity mid-tract never got diluted by cleaner water from the eastern channels because of a curtain of weeds, and ultimately made its way south through Holland Cut. The CDFW restoration approach isolates eastern Franks Tract and Holland Cut from these sources of saltier water.

In general, the restoration project reduces False River flows and isolates the tidal pumping region from the Old River fresh water corridor. The project would also shield regions upstream of the restoration site from ocean saltwater intrusion, and freshen parts of the central Delta. In other words, the CDFW conceptual restoration approach would have significant positive impacts on hydrodynamics and the few negative impacts are small and possibly insignificant.

Modeling Results in More Detail

VELOCITY MODELING

Simulations were performed around the restoration site during peak tides in energetic periods to identify near-maximum tidal velocities.

One early goal of the Franks Tract restoration approach was to limit through-flow in Piper Slough with a navigable weir structure to control velocities. However, study results suggest that velocities in Piper Slough from Little Franks Tract south past Horseshoe Bend are reduced by the project.

Farther south in Piper Slough closer to the first breach with the unrestored section, velocities will go up but do not reach levels that are normally considered a scour or navigation concern (spring tide peaks of less than 2.25 f/s at most locations in this reach).

Additionally flows through Piper Slough have little effect on salinity over the greater region (Piper Slough is too small to move large quantities of salt). Given this result and the construction economics, as well as the reliance of local communities on this slough for access to Franks Tract and other recreational destinations, DWR used a combination of complete blockage of False River (with a berm) and no structure on Piper Slough for all subsequent simulations. While the modeling only showed minor changes in velocity for Piper Slough from the restoration approach, the potential for erosion or scour along Piper Slough adversely affecting levees protecting Bethel Island will need to be investigated in more detail as part of future planning.

Modeling also explored whether the project might change tidal velocity through Fisherman's Cut. Results suggest it would increase velocity, but much less than the emergency barrier did in 2015.

Modeling also evaluated velocities in the stretch of Old River between the San Joaquin River and Franks Tract to determine velocity patterns that construction crews might encounter in late-stage construction of the main berm, and to examine navigability changes and scour potential in this channel following closure. Maximum velocities were found to be slightly stronger on flood than ebb. They reached three feet per second (ft/s), which is lower than during the extreme low-flow drought conditions of 2015, but higher than the 2.0–2.5 ft/s typical of base conditions. Such flows over a limited area may affect staging of the project but should not affect its feasibility.

VELOCITY MODELING PURPOSES

- *To identify velocities on the marsh plain and in the dendritic channels supplying them to help determine stable fill materials.*
- *To identify the largest currents in nearby waters that would affect construction and navigability.*
- *To determine velocity changes post-project.*
- *To identify peak velocities affecting closure of the main berm.*
- *To determine whether barriers, weirs, or other structures were needed on False River and Piper Slough to control velocity, and to maintain hydraulic separation between False River and Old River for Delta smelt, as suggested in the CDFW restoration approach for Franks Tract.*

Regional Impacts on Water Levels, Flow, Salinity

The Franks Tract restoration approach affects tidal energetics in the area around the Tract and changes the ways that salinity intrudes into the central Delta. DWR performed 600-day simulations using actual tidal and flow data from 2009–2010 to probe the changes that would occur in hydrodynamics and salinity over a full salinity-intrusion season.

WATER LEVELS

Modeling results indicate the project would have only a small effect on tidal water levels. The change would be about 3–5 percent,

limited to stations monitoring water quality for D-1641 near Franks Tract (see map p. 29). Stations on the San Joaquin River upstream of Jersey Point, near Three Mile Slough, may experience small increases; most other areas may experience small decreases. Peak water levels will change in the same way. While effects appear minimal, a more detailed look may be required as the restoration approach evolves to address local flood protection concerns.

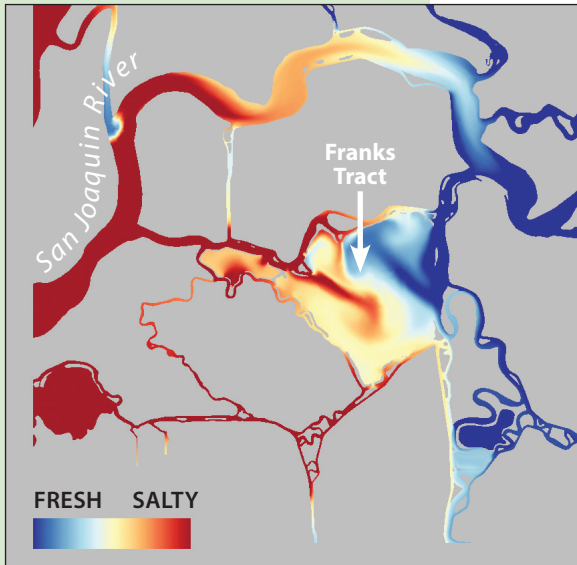
Although amplitude and peaks will not change much, some locations will experience significant changes in phase (timing) because the tides have to take a more circuitous route around Franks Tract. Larger (3-hour) lags will develop immediately at the restoration site. In other words, even though tidal range on both sides of the restoration will not change much, high tide will arrive up to three hours later in the eastern part of Franks Tract compared to the False River side. This will produce instantaneous differences in water levels on the two sides, as observed after installation of the 2015 emergency salinity barrier.

SALINITY

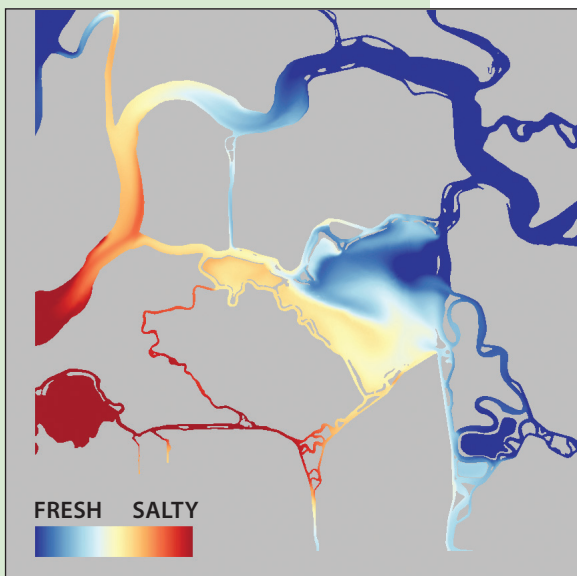
The restoration design eliminates tidal pumping from False River, an important mechanism of salinity intrusion into the mid-Delta. The figure at left provides a conceptual illustration of how tidal pumping works based on model simulation results prepared during 2015 emergency barrier planning. On flood tide, a jet of higher salinity (red) water is seen entering Franks Tract from False River through an aperture sometimes referred to as

a nozzle. Water quality in this jet is heavily influenced by that of the San Joaquin River at Jersey Point which is saltier than most of the Delta and Franks Tract. The return flow from Franks Tract is fresher — the salty jet of water will have mixed out somewhat and the ebb

FLOOD TIDE

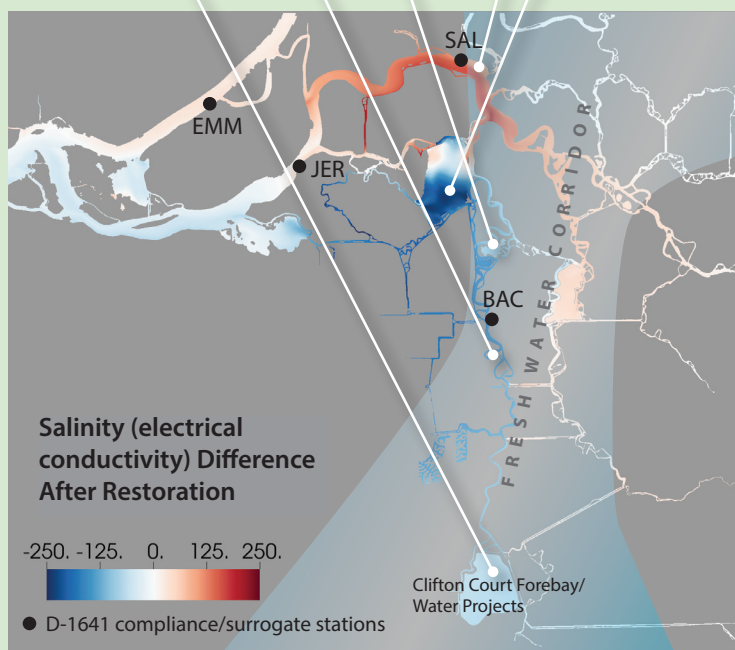


EBB TIDE



Salinity intrusion on flood (top) and ebb (bottom) tide. Source: DWR

Freshening the Delta



Franks Tract becomes significantly fresher as a result of the restoration project as modeled. The figure at left shows the potential difference in salinity as a result of the restoration (and blocking of West False River) averaged over 14 days for August 1–14, 2009. Regions shown in red indicate salinity increases post-project; regions shown in blue indicate where freshening occurs. The intensity of the color is indicative of the projected difference between current base conditions (see p.28) and post restoration conditions in August. In very general terms, in the area of the central Delta, red is undesirable and blue is desirable in terms of water quality outcomes. The black dots show some stations where water quality is measured to check compliance with various regulations and standards including D-1641. The project may increase the water cost of compliance at San Andreas Landing (SAL), but this is more likely in conjunction with other projects that affect the Delta Cross Channel already.

Source: DWR 2017

Photo: Chirstina Sloop, CDFW

flow is drawn radially from a broader area so it includes more of the ambient water in Franks Tract. Even if the volume of flow is the same in both directions, the asymmetry between a salty flood and fresher ebb adds up and causes a net transport of salt into the Delta — like a bus that travels both north and south, but carries many more passengers in the southern direction.

As mentioned above, the CDFW restoration approach reduces False River flows and isolates the tidal pumping region from the Old River fresh water corridor. Regions upstream of the restoration site are shielded from ocean saltwater intrusion and the central Delta becomes fresher. The reduction in central Delta conductivity can be more than 100 micro-Siemens per centimeter ($\mu\text{S}/\text{cm}$), which is a large relative improvement for these channels. Downstream of the restoration site, and on the main stems of the Sacramento and San Joaquin rivers, the response varies between insignificant and degradation. Where increased salinity occurs, it is generally similar on a scale of absolute units to the upstream improvements, but smaller in relative terms and likely within the range of existing requirements. These changes can still be important if they occur at stations that are the controlling locations in D-1641 or contractual compliance. If a Franks Tract restoration project is implemented, water quality and contractual obligations would still need to be met (and further evaluated as part of more detailed planning).



Photo courtesy USFWS.

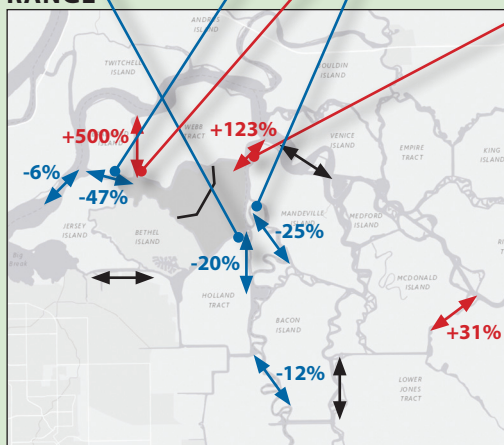
FLOW

The project is expected to affect tidal range and net flows in the region around Franks Tract. The figure on page 31 indicates the magnitude of these changes. Tidal range is measured as the July 2009 to September 2009 average difference between tidal maximum and tidal minimum discharge. For instance, a location that averages -40,000 cubic feet per second (cfs) on ebb tide and +50,000 cfs on a flood tide has a tidal range of 90,000 cfs. Net flow is the average of tidally filtered flow over a longer period (March 2009 to August 2010).

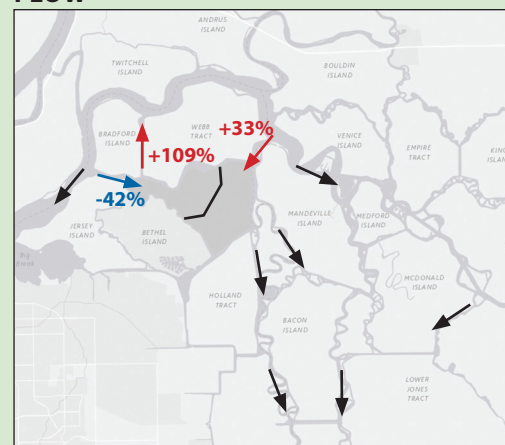
Flow Changes in Channels Around Franks Tract Post-Restoration



TIDAL RANGE



NET FLOW



Red = Increase
 Blue = Decrease
 Black = Small change (<5%)

MODELED CHANGES

- **False River** no longer supplies as much tidal flow to Franks Tract and the channels farther south. Tidal range of flow decreases from 104,000 cfs (with peaks of roughly +52,000 to -52,000 cfs) to 55,000 cfs (with peaks of roughly +23,000 to -22,000 cfs).
- **Fisherman's Cut** experiences an increase in tidal range from 2,600 cfs to 16,000 cfs. Some of the tidal energy that normally propagates from False River into Franks Tract is now directed through Fisherman's Cut. While this represents a large proportional change, the change is much smaller than that experienced with installation of the 2015 emergency drought barrier. Additionally, Fisherman's Cut does not experience the directional change that occurred that year.
- **Holland Cut** experiences a 25 percent reduction in tidal range of flow, from 36,000 cfs to 29,000 cfs. Other connections between Franks Tract and the channels to the south Delta react similarly.
- **Turner Cut**, from the San Joaquin River, experiences an increase in tidal flows from 7,200 cfs to 9,500 cfs. Other connections between the San Joaquin River and Middle River, and the San Joaquin River to the east, react similarly.
- **Delta Cross Channel** experiences a small positive effect from this project, and is more strongly affected by other restoration projects in the area.
- **Grantline Canal**, and east- west flows in the south Delta, experience negligible effects.

Charts: DWR 2017. Photo: Christina Sloop, CDFW

WATER COSTS

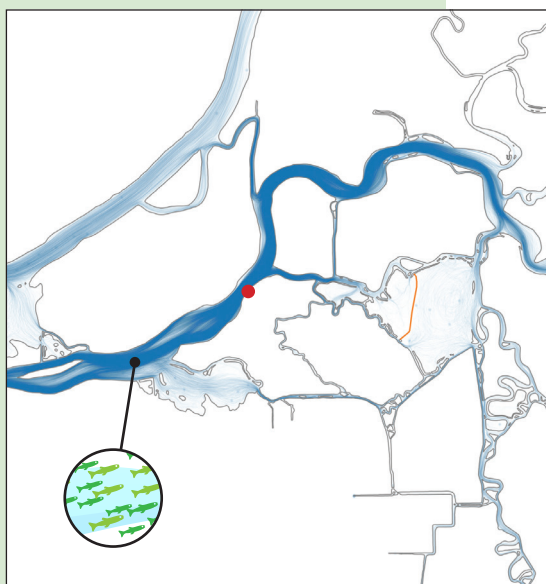
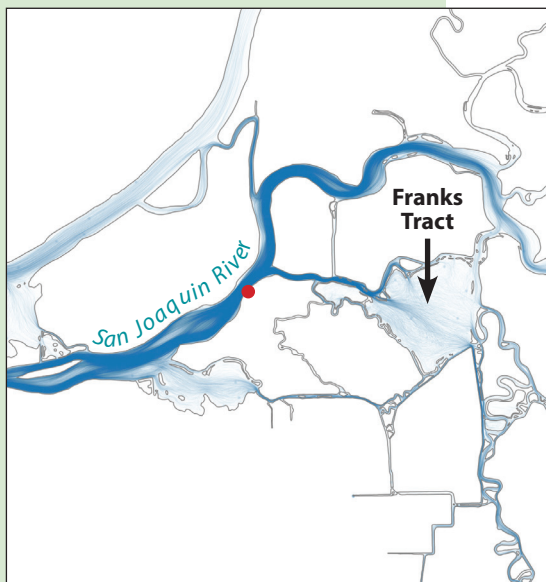
Decision 1641 contains a combination of outflow requirements, explicit state water quality standards for agriculture and municipal supplies, and objectives requiring adequate freshwater flows to be released from upstream reservoirs to keep the low salinity zone (2 ppt isohaline or X2) in a certain range of positions within the Delta. Depending on the time of year, D-1641 either protects agricultural water quality or estuarine health and habitat quality for native fish. At times Franks Tract plays an important role in these conditions, at times not. To investigate the potential impact of the restoration on D-1641 compliance, DWR analyzed tidally-filtered salinity at D-1641 locations, converted to units of specific conductance. Analysis included the base case with no project, the case with restoration, two sensitivity studies involving SAV, and interactions with other restoration sites. In dry and critical years, Emmaton and Jersey Point are also frequently the stations limiting D-1641 compliance. Analysis suggests there may be little additional water cost arising from the restoration project at these traditionally limiting locations. On the other hand, San

Andreas Landing, which usually represents a fairly achievable water quality objective, becomes salty enough to warrant vigilance (the dry year objective is 580 $\mu\text{S}/\text{cm}$). The increase at San Andreas Landing becomes particularly important when considering interactions between Franks Tract and other projects that may alter cross-channel flow such as restoration of the McCormack Williamson Tract. (See diagram p. 29 for station locations).

ENTRAINMENT

When fish are drawn by certain flow conditions into the south Delta water export facilities — where they are either lost, screened or rescued and relocated — this mechanism is referred to as entrainment. Some larger life stages of salmon can survive entrainment; smaller life stages of smelt, for example, usually do not. To explore the potential effect of the Franks Tract restoration project on entrainment of fish at the export facilities, particle tracking simulations were performed under high and low export hydrology scenarios from 19 sites around the Delta. (Particles are used as surrogates equating early life forms of endangered and threatened fish like Delta smelt, as well as the plankton particles and turbidity they follow). The simulations confirm that the project reduces entrainment of particles originating from Jersey Point and other western sites, but not from locations upstream on the San Joaquin River east of Franks Tract, which would be the case with or without restoration. When particles are entrained, the route they take to the export locations is circuitous and requires more time. The particle tracking results indicate that the project brings about an appreciable drop in entrainment from sites west of Franks Tract.

Current (top) and post-restoration (bottom) entrainment of particles/vulnerable fish through Franks Tract south toward the water projects. Darker blue = more particles entrained. Red dot: release point for simulation Source: DWR 2017



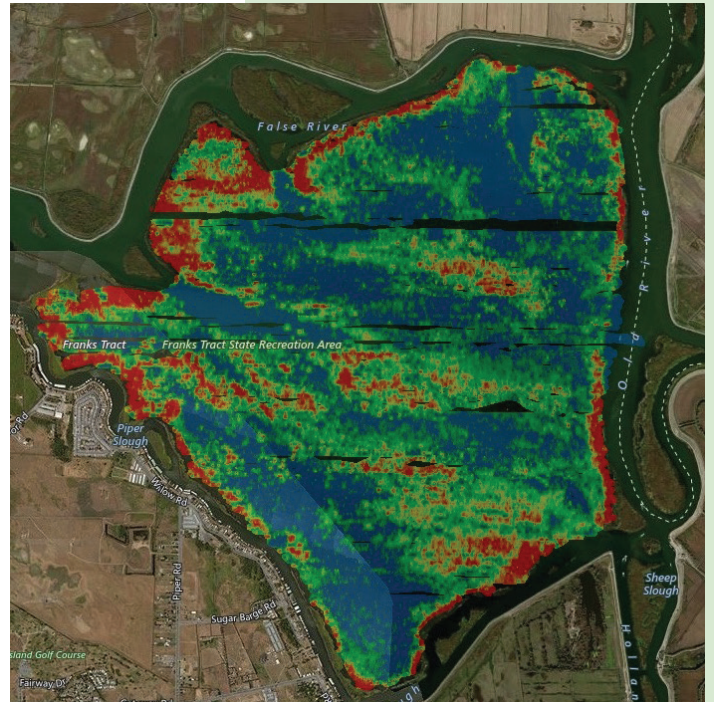
SUBMERGED AQUATIC VEGETATION

Franks Tract is currently infested with submerged aquatic vegetation including the invasive curly pondweed, Brazilian waterweed, and water hyacinth. Analysis of both the base and future geometry of the Tract suggests that the presence of the infestation affects both the current hydrodynamics of Franks Tract, as well as circulation that might be expected during construction of the proposed restoration project.

First, the submerged weeds produce drag on flow entering Franks Tract from False River. Second, they form a curtain along remnant channels on the east side of Franks Tract. The curtain inhibits lateral (east-west) mixing between Old River water entering from the north and water in the body of Franks Tract, reducing the influence of cleaner Old River on Franks Tract salinity. During the 2015 emergency barrier installation, the reduced freshening in Franks Tract affected water moving into Holland Cut and points south (DWR 2017, in preparation).

With the restoration, submerged weeds would still dampen circulation velocity in east Franks Tract, just as they do under base conditions. However, the influence of submerged aquatic vegetation on system-wide salinity is lower than its influence under base conditions or during the emergency barrier installation. The key here is geometry of the Tract itself. The main restoration berm reinforces the connection between Old River and Holland Cut while cutting off saltier sources from the west. Since Old River becomes the only major source of water in this region, vegetation no longer regulates competition between west and east to influence water quality reaching Holland Cut.

On the “non-restored” side of Franks Tract, dredging and deepening to generate fill material for the restoration should reduce aquatic vegetation and related drag on circulation.

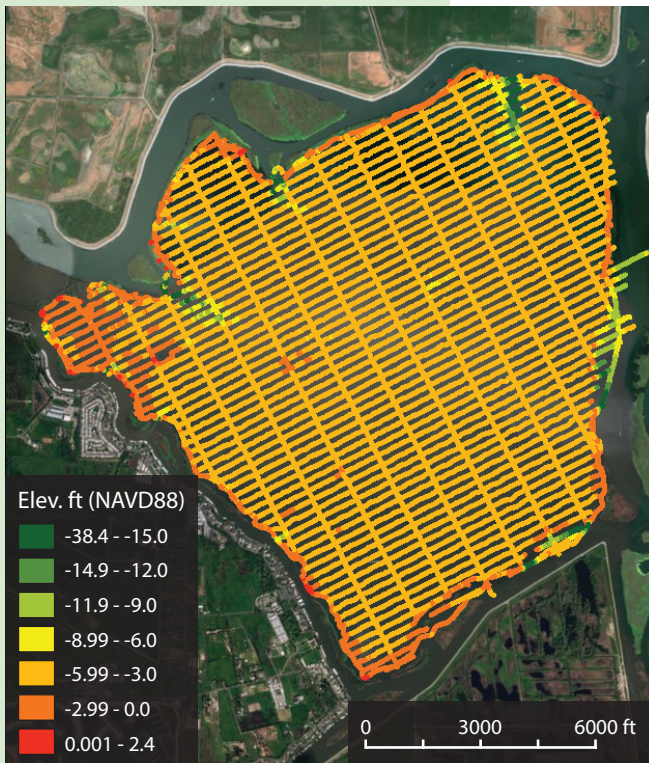


Infrared showing biomass volume of submerged invasive weeds in Franks Tract in December 2017. Target elevations for dredging will be greater than 21 feet deep to prevent re-colonization by Brazilian waterweed (Morgan et.al. 2018) and maintain open water. Photo: BioBase

IMPACTS ON OTHER RESTORATION PROJECTS

A number of restoration projects are planned for the Delta in the near future. Stakeholders were interested in possible interactions between the proposed restoration in Franks Tract and several large projects that are in a more advanced state of design and implementation including Dutch Slough, Prospect Island, and McCormack-Williamson Tract (see map p.35). Modeling examined salinity differences between single and multiple restorations. In the central Delta, Franks Tract alone would reduce salinity; and all three other projects, already well underway, would increase salinity. Results suggest that if all four together went ahead, Franks Tract would still have a positive effect in terms of reducing or offsetting central Delta salinity.

IMPACTS OF A LOCAL BORROW PIT FOR FILL



Recent bathymetry scans of Franks Tract have provided a more accurate picture of potential dredging and fill costs from potential local borrow areas. DWR 2018

Obtaining and delivering fill comprises a major cost for the Franks Tract restoration project. One idea vetted to reduce cost was to borrow material from the east side of the Tract to fill the restoration area on the west side. The deepening required could be considerable because of the presence of peat in the borrow area. Based on data presented in the feasibility study, it is expected the borrow pit might need to be as much as 25 feet deep. Deepening the eastern portion, however, could have many benefits to the larger habitat improvement project. Deeper water prevents the establishment of submerged aquatic weeds, reduces the negative effect of invasive clams on fish food and productivity, and improves navigability. In terms of recreational impacts, the deeper water could reduce large-mouth bass but increase striped bass, and shift waterfowl species to those favoring deeper water. Extensive areas of shallow water with submerged weeds, and their associated fish species, will remain around the edges of deepened area, however. In terms of hydrodynamics the borrow pit would have a nearly negligible impact on regional salinity.

5. Engineering Feasibility

The environmental engineering firm of Moffatt & Nichol was retained by the Metropolitan Water District of Southern California to provide an engineering feasibility assessment for restoration of Franks Tract State Recreation Area in collaboration with CDFW and DWR. The firm focuses on coastal and marine engineering, as well as habitat restoration, and has participated in previous Franks Tract investigations. Moffatt & Nichol completed their engineering feasibility study, using some of the modeling results provided by the DWR hydrodynamics study, in 2017 (see Appendix B).

The assessment evaluates options for construction, including feasibility and engineering constraints, sources of fill material, schedule for construction, and unit rates. Evaluation of these options led to a rough cost estimate. The schedule for the construction depends on the source(s) selected for the fill material but is estimated to take four to six years as a minimum.

The general conclusion is that CDFW's proposed restoration approach is feasible to construct; that the scale of the construction costs ranges from \$300-\$650 million; and that using local material dredged from Franks Tract, perhaps supplemented as needed by some Decker Island material, is the least cost alternative. Costs could be reduced by eliminating or modifying the amount of restoration in Little Franks Tract.



Dredging operation. Photo courtesy Moffatt & Nichol

OPTIONS & COSTS

Sources for materials to raise elevations of Franks Tract for restoration include 1) Decker Island, 2) reusable tunnel material and 3) dredge material from deepening of the Port of Stockton Deepwater Channel. A fourth possible source was identified later in the feasibility analysis: dredged material from Franks Tract itself (deepening one area to raise another). The project will require an estimated 20 million cubic yards (mcy) of material.

GROSS QUANTITIES FOR PROJECT FILL AREAS

Area	170 AC	61 AC	748 AC	Berm	Total
Fill (cy)	2,394,000	696,000	10,706,000	2,058,000	15,854,000
Consolidation (cy)	505,000	158,000	2,119,000	478,000	3,260,000
Total (cy)	2,899,000	854,000	12,825,000	2,536,000	19,114,000

FILL SOURCE 1: DREDGED MATERIAL FROM FRANKS TRACT

Dredging from one side of Franks Tract to fill another, and using materials from Decker Island to augment the process as needed, presents the lowest cost alternative. The precise dredge and fill locations within the Tract will depend on the final design, however obtaining the material itself at no cost from a nearby location results in lower haul costs. One challenge is that much of the Tract has a layer of peat, which when handled could lose water, integrity, and mass, and increase handling time and costs to provide consistent fill material. Limited boring data show areas in the Tract with minimal or no peat layer, however. Additional geotechnical analysis is needed to confirm the peat contours shown on page 39 and focus dredging in areas with minimal peat. If the amount of peat used for fill can be minimized, there will be more options for placing material (see general work plan page 38).

FILL SOURCE 2: DECKER ISLAND

The highest cost option is to use Decker Island, a site offering both materials dredged from other projects and deep underlying deposits of coarse sand. The big advantage to Decker is that the material is readily available and equipment used for earlier projects could be put back into operation. The disadvantage is the high cost of the material. Later analysis suggests that a combination of Decker Island materials and a local borrow pit offers a preferred combination of materials at a reasonable cost. A further option might be for public interests to buy Decker Island and restore it as part of the Franks Tract project (creating an additional 400 acres of marsh), or develop it as a support site for other long-term restoration efforts.

FILL SOURCE 3: SHIP CHANNEL

The dredge materials from the Clifton Court Forebay and the Stockton Ship Channel presented the second lowest cost alternative in the feasibility study. While this option combines the win-win of necessary dredging and fill material for Franks Tract, a number of other constraints made it a less viable option. (Any future consideration of this fill source for Franks Tract restoration would require collaboration on planning with the US Army Corps of Engineers.)

FILL SOURCE 4: REUSABLE TUNNEL MATERIAL

The state is considering building tunnels through the Delta to convey high quality Sacramento River water more directly to water export pumps and intakes. Reusing the material dug out to create the tunnel(s) at Franks Tract was the third best option in terms of total cost, but uncertainty over timing and extent of the tunnel project is a drawback.

SEDIMENT DELIVERY

Sediment delivery to the construction site is a key factor in estimating the costs of the Franks Tract restoration project. The feasibility study explored a variety of methods for delivering sediment, ranging from a slurry pipeline system to a combination of barges, off-loaders, dredgers and powerful hydraulic pumps. Other delivery methods include hauling sediment by truck to the site, a pneumatic conveyance system (hopper/pump), and a conveyor belt system. Many options require the use of low pressure grade (LPG) vehicles capable of moving on soft marshy surfaces.

CONSTRAINTS

Construction activities associated with restoration work at Franks Tract include dredging and the excavation of fill material; screening, transport and placement of the material on site; and finally grading and finishing to achieve design profiles and elevations. Each of these construction activities may be subject to several constraints. Some of these relate to sourcing of materials, while other constraints relate to the environment, general construction, and the physical setting of the project. Constraints evaluated in the feasibility study included the potential impacts of currents, waves, and water depths on vessel operations; erosion threats to berms and marsh edges during construction; and variables such as existing structures, ground conditions, public safety, and adverse weather conditions. Despite all these constraints, the project was deemed feasible to construct.



Decker Island on the Sacramento River is a former disposal site for material excavated during the river's straightening. Restoration of riparian habitat on 26 acres at the northern tip of the island, pictured here, was completed in 2000. Drone photograph by Steve Goldman.

COST ANALYSIS

Cost estimates for restoration of Franks Tract are based on sourcing of materials from 1) Decker Island; 2) reusable tunnel material; 3) dredge material from deepening of the Port of Stockton Deepwater Channel;

Source	Unit Cost (cy)	Rough Order of Magnitude Cost Estimate
Decker Island	\$34.03	\$650,530,365
Reusable Tunnel Material	\$31.85	\$608,535,650
Stockton DWSC Dredge Material	\$19.72	\$376,786,250
Franks Tract Dredge Material + Decker Island	\$16.45	\$314,381,817

and 4) dredge material from within Franks Tract itself. Other source locations evaluated were omitted due to unit costs, insufficient quantities of material, or distance from the project site.

Costs could be reduced to \$252 million by eliminating restoration of Little Franks Tract. This would have little

effect on overall project objectives. If reusable tunnel material becomes available from Bouldin Island it could provide a lower cost substitute for Decker Island material.

A preliminary engineering estimate for implementation of the locally proposed design was \$208,256,000.

General Work Plan - Lowest Cost, Most Feasible Alternative

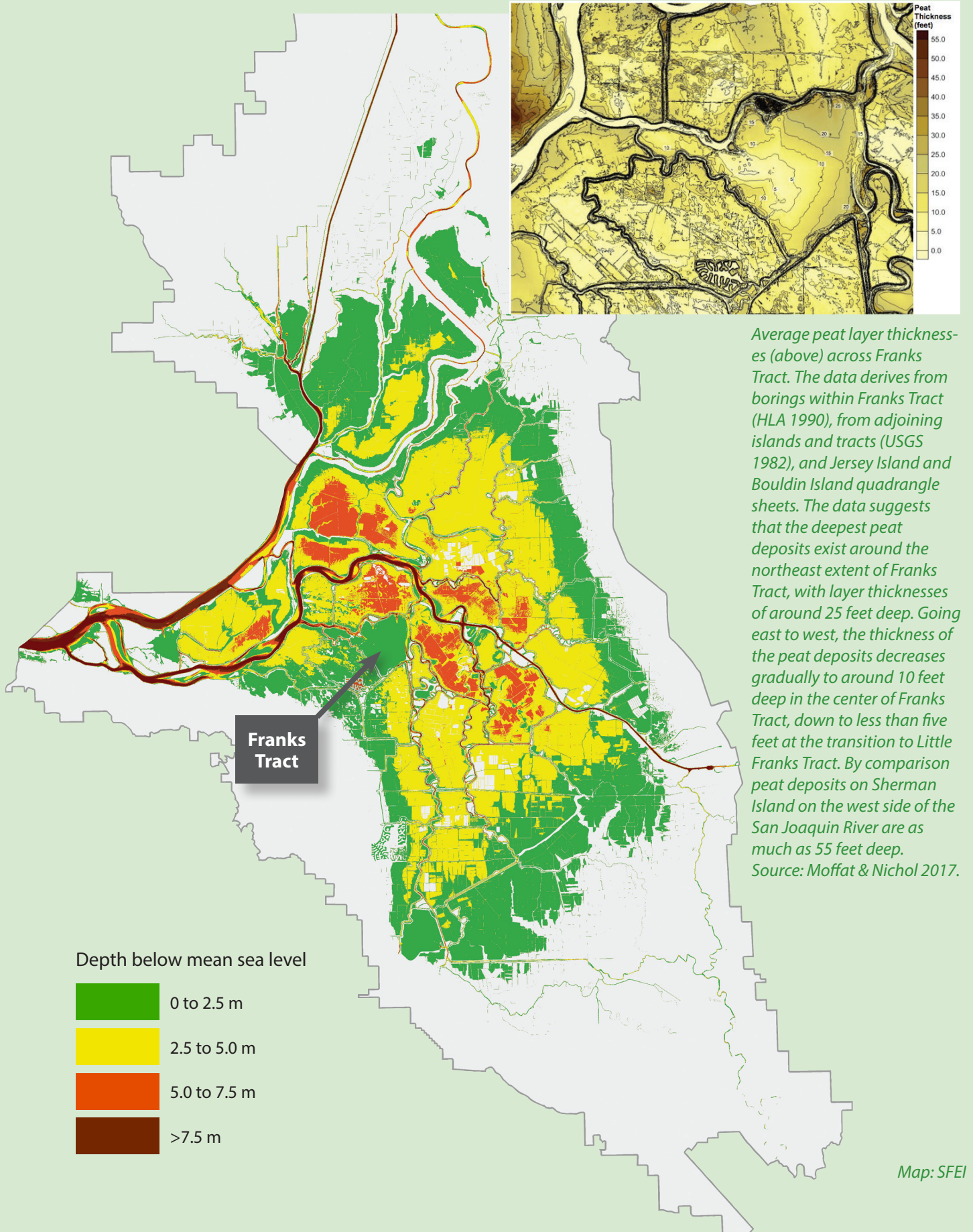
The engineering feasibility study identifies a combination of Decker Island and Franks Tract material as the lowest cost alternative for building the CDFW restoration elements. The work would involve the following three major steps:

- 1. construction of a permanent containment berm;
- 2. construction of a temporary island near the containment berm for offloading and staging fill;
- 3. dredging material from Franks Tract, placing it on the island, and then distributing the material using heavy equipment into the new marsh zone.

Two initial elements of the project – construction of the berm and a temporary island -- require the use of Decker Island material. The Decker materials will be dry and allow the containment berm to be built without disappearing into the peat, mud, and water. Similarly, constructing an island where dredge materials can be delivered and offloaded will require materials with a dry consistency. The island would be about five acres in size and 6-7 feet above sea level, to keep it above the water line and provide a stable enough platform to operate low pressure grade (LPG) dozers, excavators and trucks.

In general, daily operations would consist of dredging Franks Tract on the east side of the berm and hauling dredged material by hopper barge to the island where it will be offloaded by a derrick barge, and then spreading the material in the right places as fill.

Franks Tract is one of the least subsided islands in the central Delta, making restoration via fill to intertidal levels more cost-effective and sustainable.



Necessary in-the-water equipment would include one dredge for dredging, one dredge for offloading scows, and three dump scows or barges in rotation to move materials around. Dredges would be 26 cubic yard clamshell dredges equipped with environmental buckets. Anticipated production would be approximately 4,000 tons (2,500 cy) per ten-hour shift. On a two-shift operation, two 4,000-ton hopper barges at each location could be used to move a total of 16,000 tons (10,000 cy) per day.

The first work activity would be to construct the berm. This would be accomplished by dredging a channel, approximately 200 foot wide to a bottom depth of 18 feet to allow the derrick and material barges to access the channel. The dredged material, which could be mostly peat, would be side cast and stockpiled within the fill material. The access channel would be excavated from the east to the west along the total length of the barrier. This will require excavation of approximately 3.15 million cubic yards of peat.

Once a channel is open on the east side of the barrier, crews can begin placing material on the berm itself with a second derrick spread. Material will be offloaded by a derrick/crane barge along the berm.



Low pressure grade tractors, cats, dozers, and scrapers laying the groundwork for restoring tidal action to the Tule Red property in Suisun Marsh. Photo: Westervelt Ecological Service

Once the barrier has been constructed, both derricks will move to locations where material can be offloaded from barges and spread by dozers, or as an alternative the material can be liquefied and pumped off to various locations.

The entire project, given various water level constraints and environmental windows protective of fish, would likely take 4-6 years to complete and include considerable engineering challenges depending on the amount of peat involved. More detailed analyses could clarify these challenges before construction, but the main conclusion remains that the project is feasible. While the expense could turn out to be greater than other planned restorations around the edges of the Delta, conditions in these other areas are easier to work in and the scale of the Franks Tract restoration approach is much greater.



6. Recreation, Communities, Economy, and Other Considerations

The restoration and renewal of Franks Tract will not be feasible without careful consideration of the interests of its owners, neighbors, and local communities, as well as state interests. The property is owned by the state and is a designated State Recreation Area. State priorities for smelt resilience and water supply quality are clear, as are the purpose and goals for the State Recreation Area. The effects of the restoration approach on the local economy and recreational opportunities that have developed around this long-flooded island should also be considered.

State Recreation Area Management Concerns

Most of Franks Tract is a State Recreational Area (SRA). These areas are selected, developed, and operated by the California Department of Parks and Recreation (DPR/State Parks) to provide outdoor recreational opportunities. The declaration of purpose developed for Franks Tract SRA, and approved by the State Park and Recreation Commission in 1966, is to permanently provide water-related recreational activities so that the recreational, scenic, historic, and scientific values of the area may be enjoyed by the public. The most current plan for management of the Franks Tract State SRA is dated 1988. Given the potential magnitude of the changes to the SRA as a result of the restoration proposal, it is likely that either an amendment to the existing General Plan, or a new management plan that accounts for these changes, is needed.

The 1988 General Plan for the Franks Tract SRA describes resource management policies; proposed uses, facilities and interpretive programs; and physical, biological, ecological, cultural, esthetic and recreational resources. In terms of its recreational value, the plan

recognizes that Franks Tract is an open waterway with no land-based facilities and that the development of marinas around the perimeter of Bethel Island has increased boating activities and the demand for recreational facilities. The plan identifies fishing, waterfowl hunting, and navigation through the Delta by recreational boating traffic as



Invasive aquatic weeds can make navigation difficult in some areas of the Delta. Photo: IEP

key existing recreation uses of the area. The plan proposes creation of islands in order to provide additional facilities for boat-in recreation use including picnicking, beach use, wildlife viewing and camping. The plan specifically identifies waterfowl hunting as a recreation use that should continue in the area. California State Parks administers a waterfowl hunting blind

permit system at Franks Tract from October through January.

In addition to the significant demand for recreation at the Franks Tract SRA, the General Plan recognizes the following state policy priorities concerning natural resources.

- Control invasive species to encourage native plant communities.
- Protect and reestablish riparian and freshwater ecosystems through development and implementation of a management plan.
- Restore altered natural habitats not being used or proposed for recreational facilities as nearly as possible to conditions that would exist had natural ecological processes not been disrupted.
- Develop specific management programs when appropriate for species that are threatened, endangered, or of special concern.
- Perpetuate recreational values at Franks Tract, with active department involvement in land and water use decisions that may impact water features in the SRA.

As part of preparing this report State Parks has been consulted regarding the consistency of the 1988 General Plan with the changes proposed in the Franks Tract restoration approach. Preliminary review suggests that several of the resource management policies for the unit are consistent with the current restoration proposal, including control of invasive species and establishment of ecosystems and freshwater marshes that support threatened and endangered species. Proposals to

fill and create marsh and upland areas, however, are different from early 1988 general plan proposals (never implemented) to construct islands within Franks and Little Franks Tract for the purpose of supporting low-intensity, boat-in recreational use including beaches and recreational facilities for camping and picnicking in designated areas.

At this time, State Parks recognizes that its General Plan for the recreation area is now 30 years old, and that the goals and proposals in the plan for Franks Tract likely warrant review and evaluation given current conditions, management context, scientific knowledge of the Delta, and the proposed restoration of Franks Tract.

State Parks supports the concept of restoring portions of Franks Tract SRA in order to benefit native fish species and to minimize habitat for non-native fish and plant species. However, State Parks is concerned that the restoration approach doesn't accommodate recreation use in any intentional way. It is not clear yet, for example, whether the creation of tidal marsh would preclude waterfowl hunting or eliminate some of the waterfowl blinds in the SRA.

State Parks is interested in exploring how both existing uses, as well as other low intensity and passive recreation opportunities, might be accommodated into the restoration design. State Parks would like to participate directly in any further development of plans and designs if the restoration project moves forward. This would include development of specific plans that meet habitat restoration objectives and address the State Parks goals for recreation use of Franks Tract and the interests of local communities.

State Parks has a few additional concerns that it hopes to see clarified in any final restoration plan. These include addressing the additional cost of managing public use in new upland areas, which are likely to create problems such trash, fires and illegal camping. Current State Parks supervision, patrol, and management of the SRA is provided by the Gold Fields District based in Folsom. Occasional current patrols (2-4 times per year) would not be adequate if there was increased recreational use resulting from the restoration. The restoration project also needs to clearly identify which agency or entity will be responsible for maintaining the substantial berms or levees that would be created with this restoration.



*State Parks currently issues 30-40 permits, each listing 1-4 hunters, annually to place temporary waterfowl hunting blinds in the Franks Tract SRA.
Photo: Brett Milligan*

Local Community Concerns

Any proposed changes to Franks Tract and Little Franks Tract will affect those who live, work and play in the area. In an effort learn more about how the area is currently used, CDFW reached out to many of these people, using a landscape research team from UC Davis.

All aspects of the UC Davis research showed that human use is pervasive on Franks Tract and Little Franks Tract. The major uses are fishing, recreational boating and the associated service industries that have developed around these uses, such as marinas, shops, and restaurants. All these uses, as well as the unincorporated town of Bethel Island, emerged and developed with the creation of the open water tract in 1938. Thus any changes or reclamation of Franks Tract are bound to affect current uses and adjacent communities.

Overall, research results indicated that cultural uses occur throughout Franks and Little Franks Tracts but are concentrated along the main navigation corridors. Fishing, some of which is conducted along remnant levees, is consistent throughout the year, with upticks in the shoulder seasons of fall and spring. Boating use is highest in the

summer months. Hunting is another major use, which is seasonal (fall and winter) due to regulations. Sites for approximately 65 seasonal hunting blinds form a grid across part of the Tract (restoration could potentially reduce the number of sites). Blinds and hunters traverse the Tract to get to designated hunting zones. Little Franks Tract sees significantly less use. Hunting is prohibited and shallowness discourages most types of recreational boating. Therefore use is limited to non-motorized boats, such as kayaks, as well as specialized shallow-keeled fishing boats.



American wigeon, a common dabbling duck in the Delta.
Photo: Rick Lewis

The research team also provided local stakeholders and the public at large an opportunity to offer feedback on the CDFW restoration approach. Stakeholders were informed that this is a preliminary study for a restoration project that would only move forward if deemed feasible and funding is secured. They were also informed that while there are flexibilities in restoration design, management and sequencing, core biological and physical objectives must be met in order for the project to gain the necessary agency support. Stakeholders were also informed that the study has no sway over the reduction of Delta exports.

Stakeholder outreach research included a variety of methods: a survey, interviews, stakeholder workshops, participatory mapping exercises, fieldwork, and a review of existing use/recreational studies (see also previous Parks section) for the area. These mixed methods enabled CDFW to corroborate findings and develop a multifaceted understanding of stakeholder preferences. The survey yielded almost 730 responses, the majority from boaters and anglers. The team also interviewed marina owners, maintenance district personnel, anglers,

hunters, ranchers, fish biologists, those conducting biogeophysical monitoring in the area, law enforcement and others. The team also held workshops with anglers, business owners, and Bradford and Bethel Island residents. Research also included ground-truthing and direct observation of site conditions, as well as use of drone photography to reveal various landscape features that were challenging to see from the water, levee, or land.

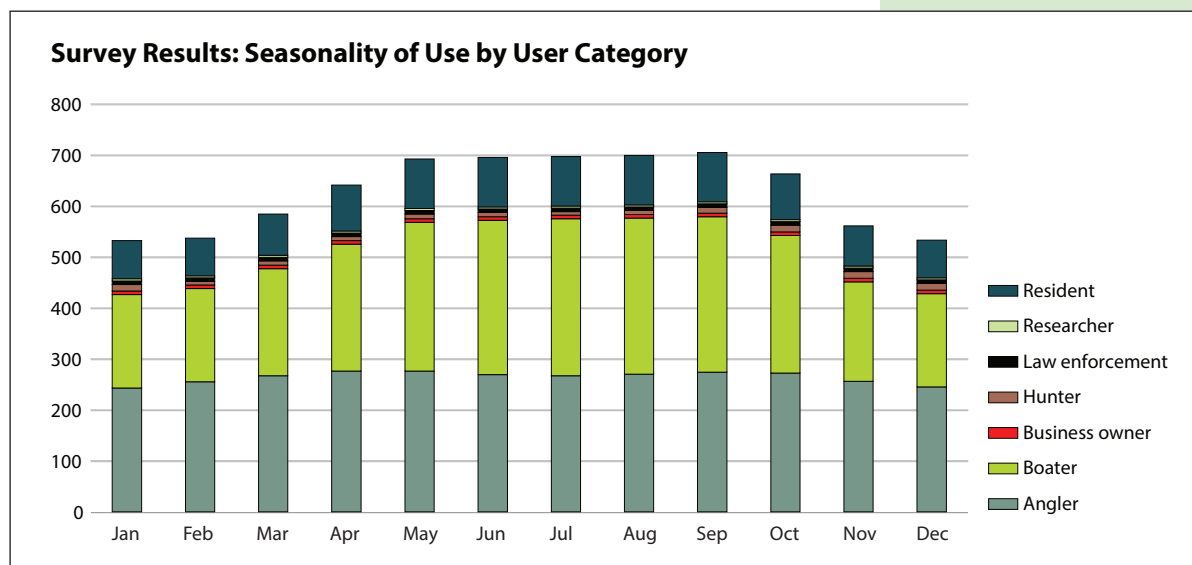
Findings

Current human uses of Franks Tract and Little Franks Tract are numerous and occur throughout the year. This area is one of the most popular and publicly used tracts, flooded or dry, in the Delta.

The survey, combined with a review of seven previous recreation studies done by various agencies between 1985 and 2011, yielded three major insights related to usage patterns:

1. Use of the Tract, particularly for boating, is highest in the summer months. Those who identified as business owners, researchers, and law enforcement all indicated a year-round presence on the landscape. Hunters, anglers, and boaters, on the other hand, all exhibited use patterns based the seasonality of these activities. See chart below.
2. Residents and recreational users have by-and-large been resistant to large-scale planning efforts in this region, especially those that alter flow or compromise navigability. Exceptions include the Franks Tract State Recreation Area Optimum Plan, which was prepared for the California Department of Parks and Recreation (DPR) by the East Bay Regional Park District (EBRPD), as well as the 1988 General Plan for Brannan Island and Franks Tract SRAs (see p.41). Both planning initiatives contained comprehensive efforts to identify and integrate the needs and desires of the public.

Many people instinctively distrust change. Indeed about 45% of survey respondents (308 of 728) indicated they preferred Franks Tract be left as is. However, even leaving it as is requires a maintenance budget for levees, flood protection, recreational services, safety patrols, and natural resource management. Stakeholders and management agencies could all benefit from new “resources” directed at positive change on Franks Tract.



Source: Brett Milligan and Alejo Kraus-Polk, UC Davis

3. Navigability in and around Franks Tract directly affects recreation and the economic health of the local communities (Bethel Island, Oakley and Discovery Bay) as well as broader, regional users of the Tract (such as from San Francisco Bay and areas adjacent to the Delta), as well as bass tournament anglers from throughout the country.

Other findings:

- Navigable water and access to it is a primary stakeholder concern.
- Franks Tract is a major hub for water-based transportation in the Bay-Delta.
- The Tract is vital to the regional economy, which has emerged based on the open water and the livelihood and recreational amenities it provides.
- Property values on Bethel Island are determined by proximity to fast water, i.e. open waterways in which there are no speed limitations.

The boating community is a strong stakeholder and includes:



*Setting out at first light for a fishing tournament from Delta Coves, Bethel Island.
Photo courtesy FLW/David A. Brown*







- Yachters, waterskiers/wakeboarders, kayakers, kite sailers.
- Water based developments: Discovery Island and Delta Coves
- Boat-based anglers (the majority in Franks Tract and Little Franks Tract)
- Marinas and service industry (restaurants, gas stations, repair shops, storage, etc.)

- Early stakeholder involvement offers an opportunity for adjustment before more detailed planning and the formal EIR process.
- The siting of proposed tidal habitat restoration is flexible within Franks and Little Franks Tracts, as long as habitat conditions are improved for smelt and pelagic and native fishes.
- Most stakeholders strongly objected to the location and configuration of the proposed tidal marsh restoration areas in Franks and Little Franks Tract because it would block some marina and boat traffic to residential areas. Alternative configurations are possible that will have less impact on local communities and economies. Some but not all local interests concur that water quality has to be maintained or increased.

- Increasing project amenity value to local residents and users might bring it more public support.
- Beach creation and anchoring locations are seen as highly beneficial to residents, boaters and boating based businesses (a finding that is consistent with past recreational planning surveys and the Tract's General Plan).
- Levee improvements are supported by local residents and maintenance agencies. Potential effects of the project on velocities in Piper Slough need further evaluation.
- Channel dredging is supported by boaters and local residents.
- Residents and users were wary of a restoration strategy focused narrowly on Delta smelt. Rather, many expressed much more support for a strategy that explicitly targets a broader range of 'native' fisheries and Delta ecosystem recovery generally, as well as sustaining and augmenting existing sport fisheries.
- Waterfowl habitat improvements are supported by hunters, as long as the blind system is minimally modified.
- Aquatic weeds are recognized as a nuisance, but there is concern about the effects of current spraying and management, especially on prized sport fish species such as black bass. A design scheme that could reduce weeds in crucial navigation corridors would be appreciated. However, weed presence in certain areas supports the world-class bass fishery.

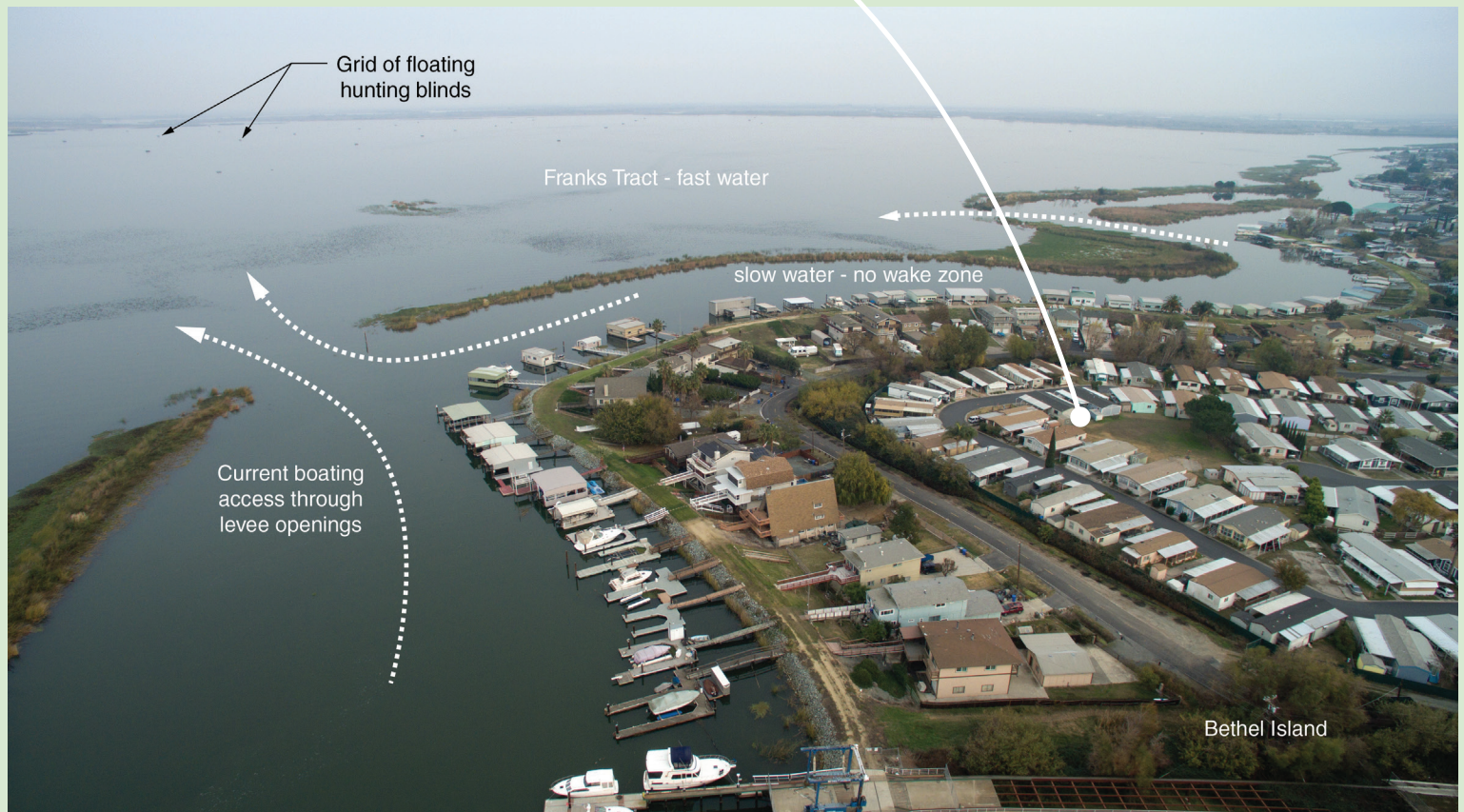
Participatory mapping and discussion sessions with local community members on the potential layout of restoration areas and potential project amenities resulted in the creation of a local proposal. This locally proposed conceptual design seeks to balance biological and physical objectives with the desires of the boating and fishing community, affiliated business, and homeowners whose property values are determined by proximity to fast water. The local proposal features a somewhat smaller 2.5-mile-long primary levee across the center of Franks Tract, smaller levees along much of Piper Slough along the north side of Bethel Island, and a rock groin levee. This proposal would create 165 acres of upland areas and 855 acres of tidal marsh habitat. See map page 48.

This locally proposed approach was preliminarily reviewed for hydrodynamic differences by DWR. At this time, results suggest it would have lower water quality and salinity intrusion reduction benefits than the CDFW approach.

Common Name Genus and Species	Identification
Delta Smelt <i>Hypomesus pacificus</i>	
Threadfin Shad <i>Dorosoma petenense</i>	
Longfin Smelt <i>Spirinchus thaleichthys</i>	
Sacramento Splittail <i>Pogonichthys macrolepidotus</i>	
Striped Bass <i>Morone saxatilis</i>	
Largemouth Black Bass <i>Micropterus salmoides</i>	

These native and introduced species share habitat in the novel ecosystem that has evolved in the Delta. The top five species are part of a group suffering an alarming decline scientists call POD (pelagic organism decline); non-native largemouth bass and striped bass are prized recreational fishing catch but can also prey on smelt and other natives.

A Local Proposal Moving Marshes to the North side of Franks Tract



After reviewing the CDFW restoration approach, a local resident proposed a design for preserving access to existing channels, adding recreational amenities, and locating tidal marsh habitat farther away from the Bethel Island shore. This design approach received general support during a meeting with the Bethel Island community on January 5th. Local design drafted by David Gloski. Annotated aerial image Brett Milligan.

Recommendations

Outreach results suggest that the local community is wary of significant change to the region as well as any top-down decision-making that does not take their interests into account. As such, local communities are highly interested in being involved in the design and planning process for any potential changes to Franks and Little Franks Tracts.

Meetings and ongoing conversations about Franks Tract restoration are needed to build trust and more open communication between state agencies involved in restoration efforts and the general public. Stakeholders are now interested in collaborating on next steps.

Future planning activities should apply guidance in the Delta Conservation Framework. Among other goals, the Framework calls for integrating regular stakeholder communication and socio-economic considerations into Delta conservation planning, and for developing multi-benefit conservation and land management solutions to balance environmental and human needs. Specifically, future research that explores the design features that can combine restoration goals with recreation possibilities (existing and new), public access and flood management goals will likely increase the viability of, and support for, the project.

Potential Questions for Follow Up

How will changes in depth affect the invasive clam population?

What happens to water levels pre-and post restoration during flood events at high tide near the winter solstice, which is when the flood potential on other islands is greatest?

To what extent do hydrodynamic changes reduce entrainment of young salmon?

How will maintenance of the restored marsh be funded?

How will Bethel Island levees be affected by proposed changes and/or rising sea levels?

Would the number of duck blinds permitted be reduced?

How would new upland areas and levee tops be managed for public use?

What are the potential water quality effects, in more detail, of the restoration in relation to D-1641 and state water contract requirements?

How would the restoration proposed for part of Franks Tract interact with other restoration projects in terms of public access and connectivity?

How do proposals to restore part of Franks Tract factor into the East Bay Regional Parks District planning for the Delta, as outlined in their East Bay Regional Park District DRAFT Delta Atlas for Contra Costa County?

What modifications in project design and material sources could minimize costs?

How will changes in SAV composition affect habitat suitability for fish?

7. Findings & Next Steps

The restoration of ~1,000 acres of Franks Tract to intertidal marshes and sloughs could improve habitat quality for Delta smelt and other declining pelagic fish species.

The associated dredging and deepening of a portion of the remaining ~2,000 acres of open water at Franks Tract could reduce the extent of submerged and floating aquatic weeds while improving navigation access and leaving habitat for valued sport fish around the edges.

In the right configuration, the proposed new berms and landscape changes could also restrict tidal flow through Franks Tract to Old River, improve central and south Delta water quality, and reduce entrainment of Delta smelt and salmon into south Delta waterways and water export facilities.


In the novel, much-altered, native and non-native ecosystem that is the current Delta, it is still possible to recover some historic, natural form and function such as marsh building and food production processes. Using these physical processes to make improvements is more sustainable than the continued construction of emergency barriers and engineering solutions to hydrodynamic problems. If designed appropriately, such process-based restoration efforts can also provide resiliency to climate change, both sea level rise and potentially more frequent and longer droughts.

The proposal to restore and improve Franks Tract also supports a number of regulatory and management goals, plans and guidelines. CDFW's restoration approach is consistent with the Delta Smelt Resilience Strategy, state goals for the Franks Tract State Recreation Area, and state water quality control plans for the San Francisco Estuary. The effort also aligns with the multi-agency Delta Conservation Framework and the emerging Central Delta Corridor Partnership.

If approved for further development, the Franks Tract restoration proposal would enter a more detailed phase of planning, design, and environmental review with a target end date of December 2020.

Any more detailed restoration planning will take into account the social, economic, and recreational interests of the affected local communities and user groups, in keeping with the collaborative principles outlined in the multi-agency Delta Conservation Framework.

Next steps would involve developing a variety of scenarios considering both the CDFW restoration design, as well as community and user group alternatives.



Potential goals for a more detailed restoration plan for Franks Tract include:

- Achieve habitat enhancement for Delta Smelt and other declining pelagic fish species including striped bass and other native fishes
- Improve water quality in the central and south Delta
- Maintain or improve recreational opportunities in Franks Tract
- Maintain navigational access consistent with habitat and water quality enhancement
- Eliminate or significantly lower need for aquatic weed control in Franks Tract
- Increase resilience of Franks Tract and adjacent areas to effects of climate change

A first step to addressing these goals in restoration designs and scenarios would be convening of a facilitated advisory group of local community interests (boating, fishing, economic, land owners, and hunting), local government, and other interested stakeholders (Contra Costa Water District, water contractors, other in Delta water users) by the State agencies to participate in development of the plan. State agencies would also work to integrate the restoration design and outcomes into the evolving Central Delta Corridor Partnership's Regional Conservation Strategy.

8. References

KEY TECHNICAL REPORTS

Hydrodynamic Modeling in Support of Franks Tract Restoration Feasibility Study, Delta Resiliency Strategy, 2017. Eli Ateljevich & Kijin Nam, Bay-Delta Office, Delta Modeling Section, California Department of Water Resources (Appendix A)

Franks Tract Engineering Feasibility Assessment, Prepared for the Metropolitan Water District of Southern California, 2017. Moffat & Nichol (Appendix B)

Franks Tract and Little Franks Tract User Survey. Brett Milligan & Alejo Kraus Polk, University of California at Davis (Appendix C)

Online Appendices available at
[www.wildlife.ca.gov/Conservation/Watersheds/](http://www.wildlife.ca.gov/Conservation/Watersheds/DCF#41062618-franks-tract-restoration-feasibility)
 DCF#41062618-franks-tract-restoration-feasibility

OTHER REFERENCE REPORTS

Delta Conveyance Improvement Studies Summary Report, AECOM & EDAW, 2007. Available: www.water.ca.gov/frankstract/docs/Delta_Conveyance_Summary_Report_121007.pdf

Dutch Slough Tidal Marsh Restoration Revised Conceptual Plan prepared by ESA PWA, 2010. Access at www.water.ca.gov/-/media/DWR-Website/Web-Pages/Programs/Integrated-Regional-Water-Management/Delta-Ecosystem-Enhancement-Program/Dutch-Slough-Tidal-Restoration-Project/Files/Dutch-Slough-Revised-Conceptual-Plan-October-2010.pdf

A Synthesis of Delta Smelt Growth and Life-History Studies. Final Report. Hobbs J.A. 2015. Department of Wildlife, Fish and Conservation Biology. University of California, Davis. Available: www.westcoast.fisheries.noaa.gov/publications/Central_Valley/BDCP/2015_delta_smelt_growth_and_life_history_synthesis.pdf

Goals Project. 2015. The Baylands and Climate Change: What We Can Do. Baylands Ecosystem Habitat Goals Science Update 2015. California State Coastal Conservancy. Available: http://baylandsgoals.org/wp-content/uploads/2015/10/Baylands_Complete_Report.pdf

Delta Smelt Resiliency Strategy. Natural Resources Agency. 2016. Available: <http://resources.ca.gov/docs/Delta-Smelt-Resiliency-Strategy-FINAL070816.pdf>

A Delta Renewed. Robinson, A., S. Safran, J. Beagle, L. Grenier, R. Grossinger, E. Spotswood, S. Dusterhoff, and A. Richey 2016. Available: www.sfei.org/sites/default/files/project/SFEI_DeltaRenewed_102616_lowres.pdf

Central Delta Corridor COR, Delta Conservation Framework, Public Draft. Sloop C.M., B. Jacobs, R. Logsdon, C. Wilcox. 2018. California Department of Fish and Wildlife, Water Branch. Available: www.wildlife.ca.gov/Conservation/Watersheds/DCF

SCIENTIFIC REFERENCES

- Grossman, G.D. 2016. Predation on Fishes in the Sacramento-San Joaquin Delta: Current Knowledge and Future Directions. San Francisco Estuary and Watershed Science, Vol. 14, Issue 2, Article 80. Available: <http://dx.doi.org/10.15447/sfews.2016v14iss2art8>
- Grossman G, Essington T, Johnson B, Miller J, Monsen N, Pearsons T. 2013. Effects of fish predation on salmonids in the Sacramento River–San Joaquin Delta and associated ecosystems. Panel final report. 71 p. California Department Fish Wildlife, Delta Stewardship Council, and National Marine Fisheries Service. Sacramento, CA. Available: <https://nrm.dfg.ca.gov/FileHandler.ashx?DocumentID=73874>
- Hestir, E. L., D. H. Schoellhamer, J. Greenberg, T. Morgan-King, and S. L. Ustin. 2016. The Effect of Submerged Aquatic Vegetation Expansion on a Declining Turbidity Trend in the Sacramento-San Joaquin River Delta. *Estuaries and Coasts* 39:1100-1112.
- Khanna S., J. Bellvert, J. D. Boyer, K. Shapiro, E. L. Hestir, M. J. Santos, and S. L. Ustin. 2016. High-Resolution Mapping for Determining Long-Term Trends in the Distribution of Floating and Submerged Aquatic Macrophytes in the Delta. Bay-Delta Conference, Sacramento, CA, November 2016.
- Morgan, V.H., E. Baker, C. Stottlemeyer, and J. Li. 2018. *Egeria densa Planch.*: U.S. Geological Survey, Nonindigenous Aquatic Species Database, Gainesville, FL, and NOAA Great Lakes Aquatic Nonindigenous Species Information System, Ann Arbor, MI. Available: <https://nas.er.usgs.gov/queries/greatlakes/FactSheet.aspx?SpeciesID=10&Potential=Y&Type=2&HUCNumber=>
- Thayer, D.D., I.A. Pfingsten, L. Cao, and L. Berent., 2018, *Potamogeton crispus L.*: U.S. Geological Survey, Nonindigenous Aquatic Species Database, Gainesville, FL Available: <https://nas.er.usgs.gov/queries/factsheet.aspx?speciesID=1134>
- Ustin, S. L., S. Khanna, M. Lay, K. Shapiro, and N. Ghajarnia. 2017. Enhancement of Delta Smelt (*Hypomesus transpacificus*) habitat through adaptive management of invasive aquatic weeds in the Sacramento-San Joaquin Delta. California Department of Fish and Wildlife.

Related General Interest News Articles

Salt Field I & II, ESTUARY News
2014 <http://www.sfestuary.org/estuary-news-salt-field/>
2016 <http://www.sfestuary.org/estuary-news-salt-field-ii/>
5 day -animation of salt field in 2014 www.bayDeltalive.com/salinity.

REPORT PRODUCTION TEAM

Editor: Ariel Rubissow Okamoto

Designer: Darren Campeau

Corridor Maps:

Amber Manfree, Ph.D.

Version 2:

Produced June 15, 2018

SECTION PHOTO CREDITS:

p. 3, Christina Sloop, CDFW

p. 7 & 25, Bird's Eye View

p.16 & 35, Amber Manfree

p. 41, Rick Lewis

p. 51, Francis Parchaso, USGS

Style note: As this report is for general readership the editor has chosen to use a somewhat informal style which mixes and matches familiar usage (such as CDFW and DWR).

FRANKS



TRACT

