

Your 2018 Hunter Education Instructor Correspondence Course

Welcome!

We are sorry you could not attend one of the four regional conferences last spring, where we had some great presentations on ducks and duck hunting and heard a sobering first-person account of a duck hunter's near-fatal hunting accident.

We have put together some of the highlights for you to learn from and hopefully pass on to your students. You can download and print out the questions from the HEI Resource Page, and fill in the answers as you read thru the following pages. Then, transfer those answers to the quiz in the on-line HEI Correspondence Course.

Thank you again for helping Pass On The Tradition.

A Life-Changing Duck Hunt

- Begin the course by watching *A Life Changing Duck Hunt* by Jerry Carroll. There are several questions you will be asked based on the video.
- Make sure your computer is connected to the Internet then click [here](https://youtu.be/tTMocsK4JTc) (<https://youtu.be/tTMocsK4JTc>) to be taken to the video.
- Pay attention to the lessons he learned and pass them on to your students.

2017 Hunter Casualties

11 total

- 0 fatal
- 11 non-fatal

Major Factors of Casualty

Victim covered by shooter swinging on game – 5

Careless handling of firearm – 3

Victim mistaken for game – 2

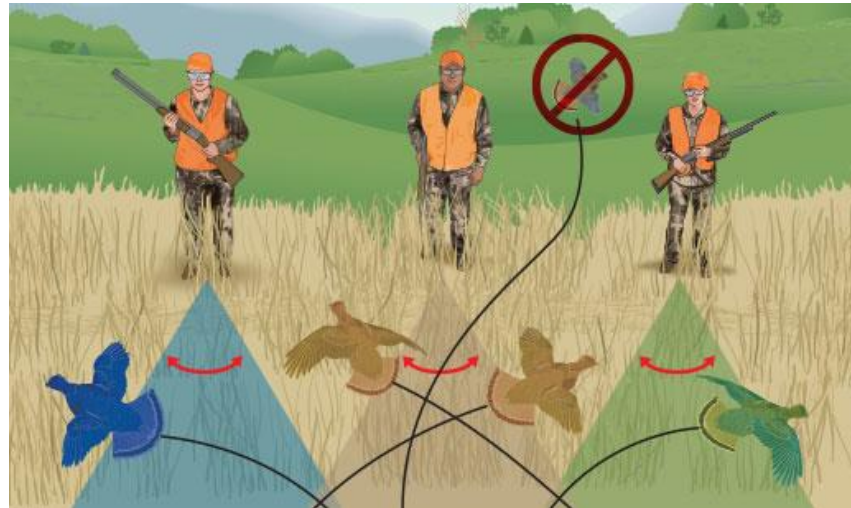
Victim out of sight of shooter – 1

Victim covered by shooter swinging on game

5 incidents

- 1 Duck / Geese hunting
- 2 Pheasant hunting
- 2 Quail hunting

Zone-of-Fire Issues



Careless handling of firearm

3 incidents

- 1 Duck / Geese hunting
 - Shotgun in gear cart fired
- 1 Deer hunting
 - Self-inflicted gunshot wound to leg while holstering handgun
- 1 Pigeon hunting
 - Shooter getting out of chair
 - Trigger caught on something (clothes, chair)

Victim mistaken for game

2 incidents

- Bear hunting:
 - shooter shot at movement about 200 yards away, thinking it was a bear
 - Victim (12 year old boy) was dressed in dark clothing with hood on
- Squirrel hunting:
 - Shooter shot at movement, thinking it was a squirrel
 - Victim was leaning against a tree

Victim out of sight of shooter

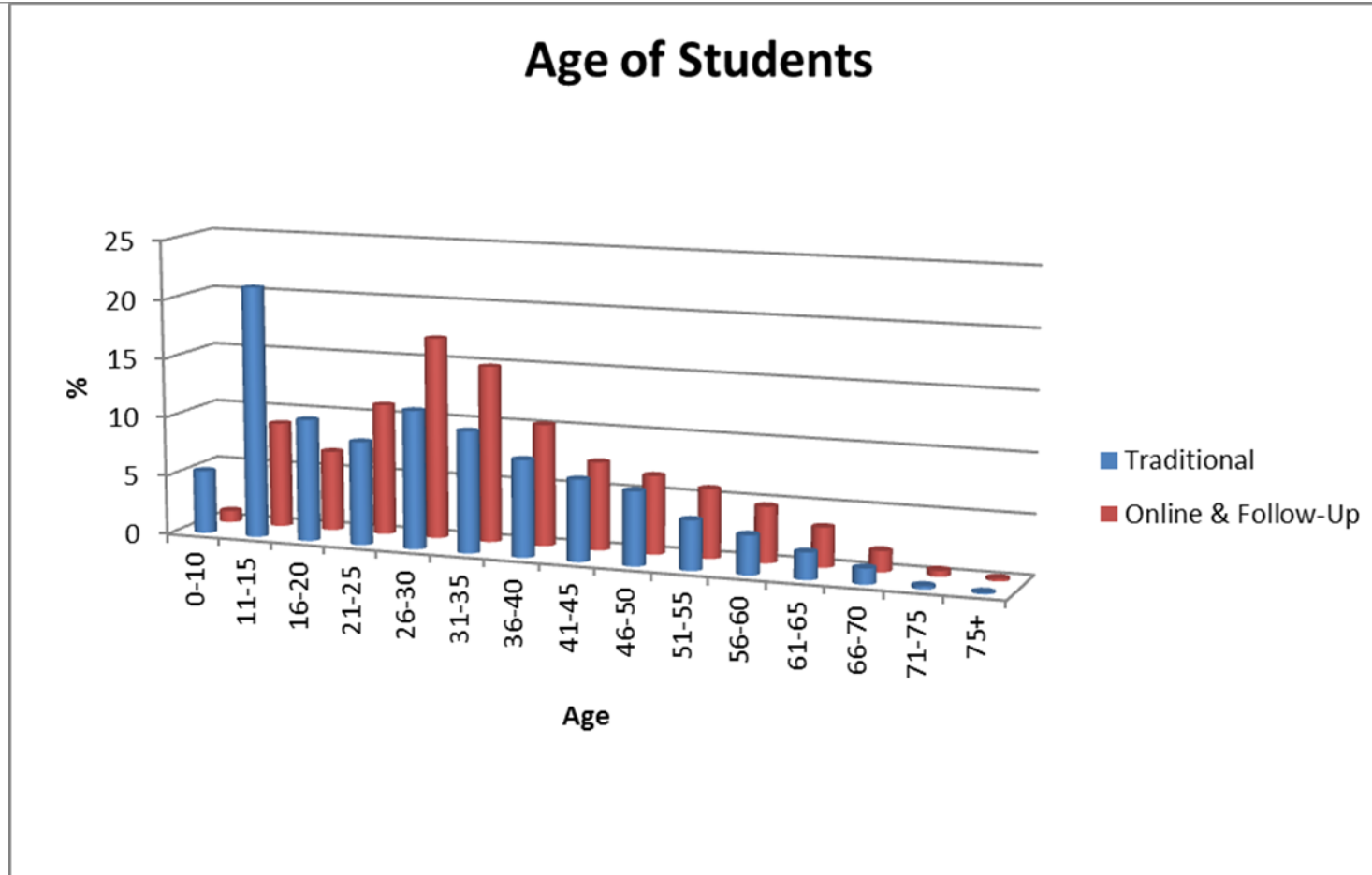
1 incident

- 1 pheasant hunting

Thick brush between shooter and victim

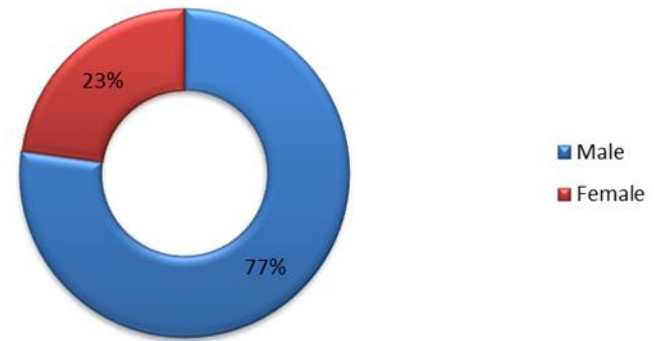


Hunter Education Statistics

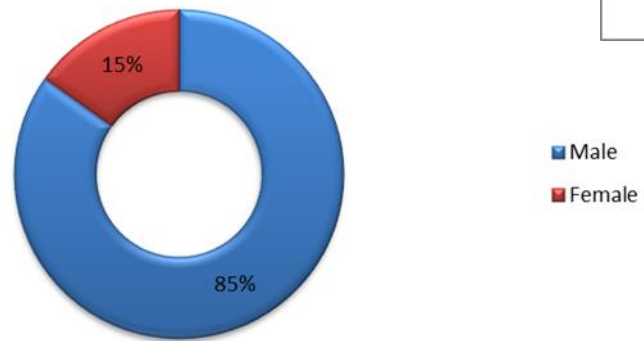


Gender

Traditional



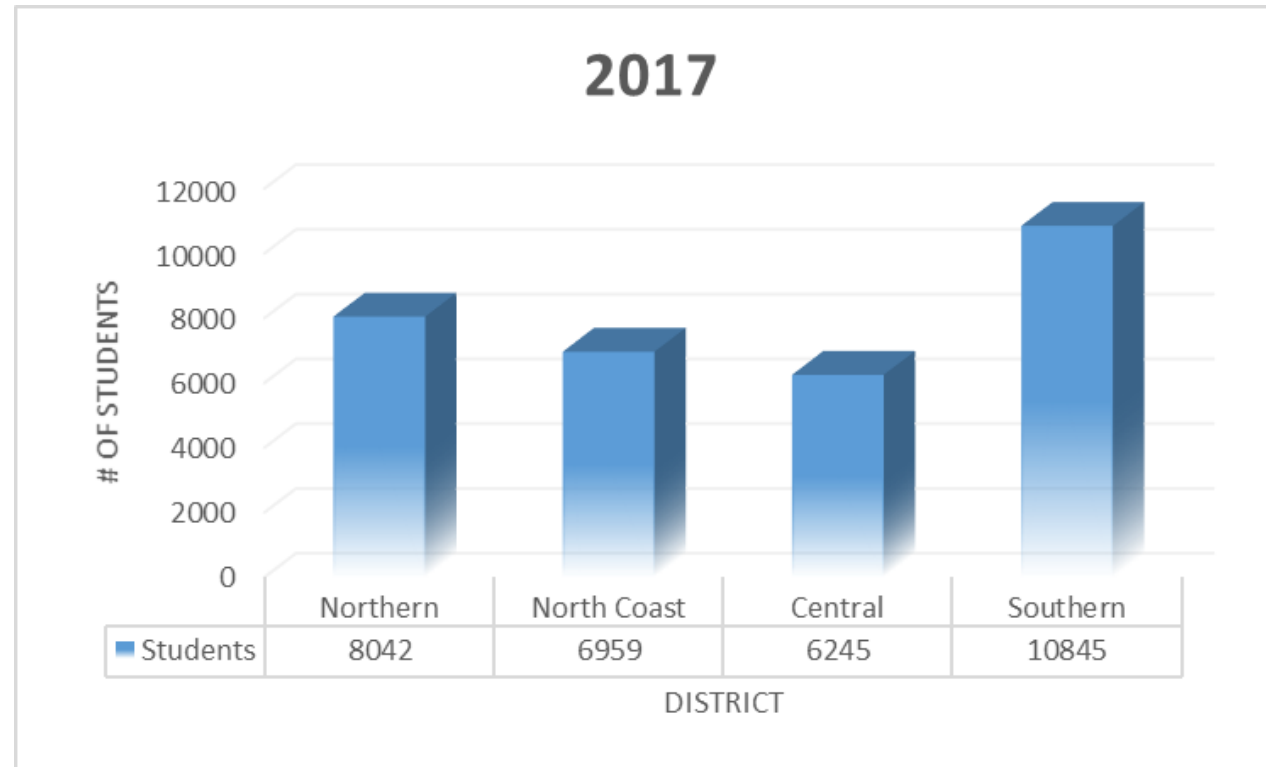
Online & Follow-Up



Numbers reported to USFWS

					(as of Feb 23 , 2018)	
	2013 / 2014	2014 / 2015	2015 / 2016	2016 / 2017	2017 / 2018	
Number of Persons trained (Includes passed or failed)	33514	34895	36171	34597	20614	
Hunter Education Classes	3428	3379	3089	3097	1747	
Volunteers	1041	1012	1048	940	870	
Volunteer hours	25815	27326	27254	31276	17069	
Volunteer Dollars			1256409	1466844	800536	

By District

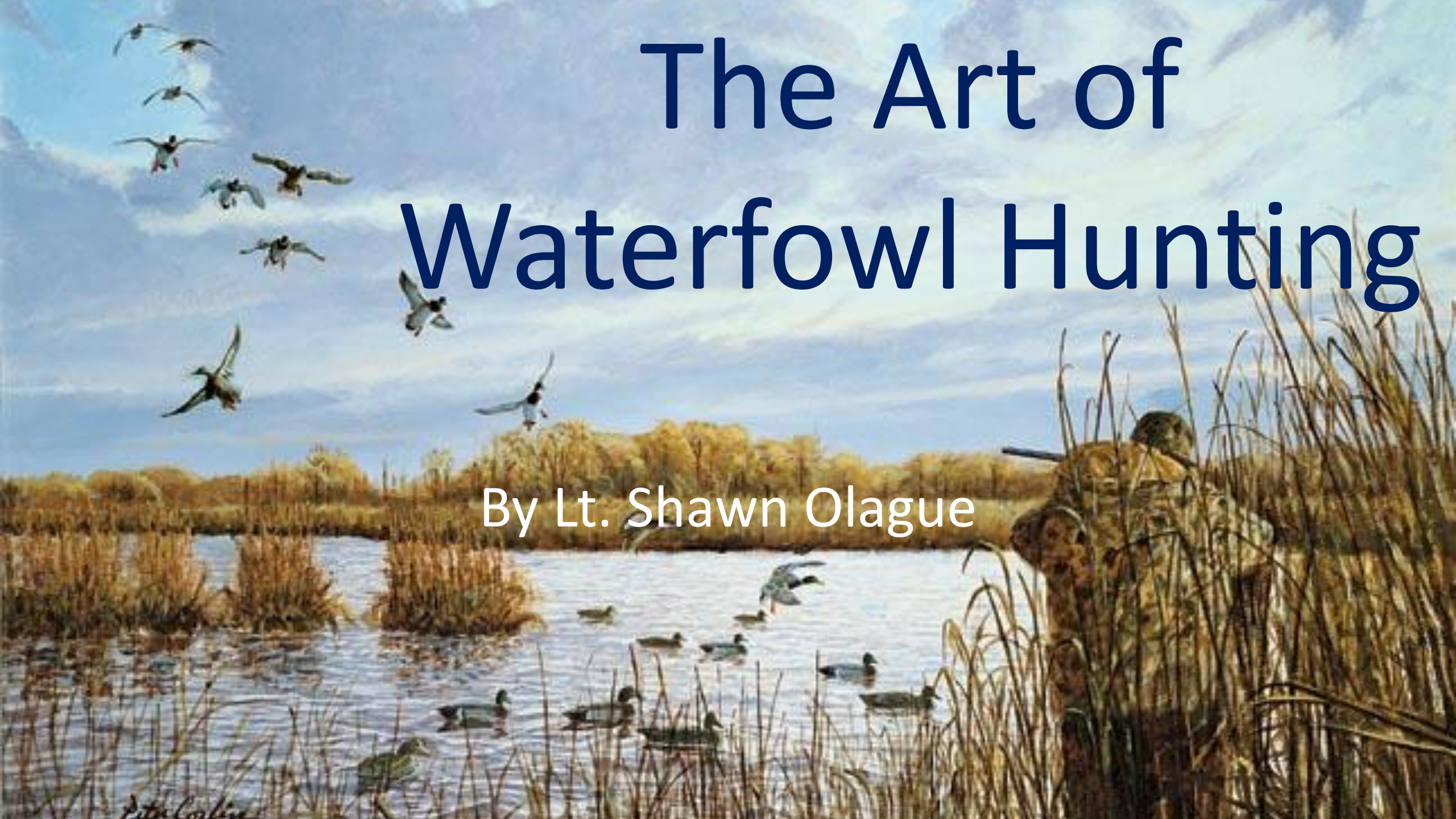


THANK YOU FOR PASSING ON THE TRADITION



The Art of Waterfowl Hunting

By Lt. Shawn Olague



Peter Coulter

Why Waterfowl?

- Available Statewide
 - Public and Private opportunities almost anywhere there is water; even along the coast.





STATE WILDLIFE AREAS

A person wearing camouflage clothing and a cap is holding a shotgun, standing in a field with a body of water and trees in the background under a sunset sky.

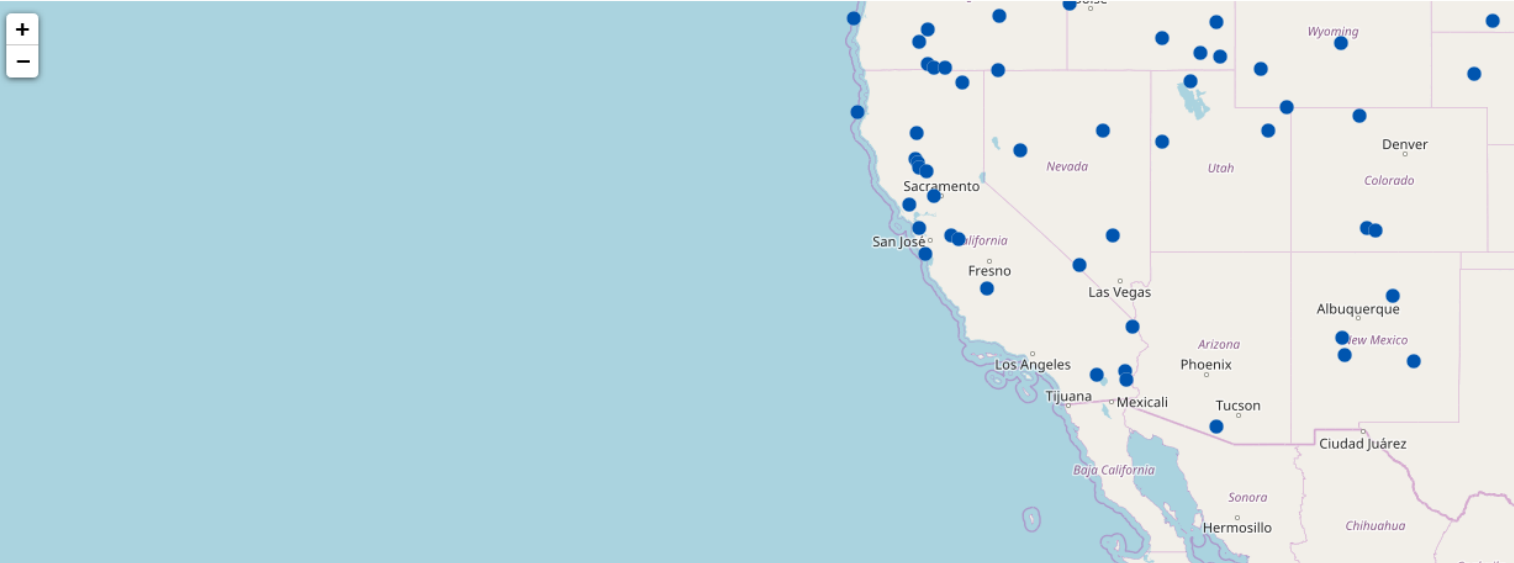
- 110 State Wildlife Areas, 710,600 total acres.
- 32,000 acres of upland habitat.
- 160,600 acres of wetland habitat.
- 13,600 acres statewide that are open to the public.
- <https://www.wildlife.ca.gov/Lands/Places-to-Visit>

California also has 21 Federal Refuges




U.S. Fish and Wildlife Service

 **Hunting** 

[Home](#) [About](#) [Land](#) [Planning](#) [Visitors](#) [Wildlife & Habitat Management](#) [Policies & Budget](#) [You Can Help](#)



Filter

-  Big Game
-  Deer
-  Small Game

Merced National Wildlife Refuge

Hunting Opportunities

- Waterfowl Hunting

Federal Refugee System

- Hunt Program managed by DFW.
- Sacramento Wildlife Refugee Complex has over 35,000 acres of wetlands and uplands Habitat.
- The San Luis National Wildlife Refuge Complex has over 45,000 acres of wetlands and upland habitat.
- <https://www.fws.gov/refuges/>

Why Waterfowl?

- Long season
 - 100+ days
 - Approx. 44 traditional shoot days. (S,S,W)



2017-18 Waterfowl Shoot Times

Shoot time starts at 1/2 hour before sunrise and goes to sunset.

NORTHERN CALIFORNIA

		EUREKA		TULE LAKE KLAMATH BASIN		COLUSA		S.F. BAY		SACRAMENTO		LOS BANOS	
		AM	PM	AM	PM	AM	PM	AM	PM	AM	PM	AM	PM
September	1	6:14	7:48	6:02	7:39	6:07	7:38	6:10	7:38	6:05	7:35	6:04	7:31
	2	6:15	7:47	6:03	7:37	6:08	7:37	6:12	7:37	6:06	7:34	6:05	7:30
	9	6:22	7:35	6:10	7:25	6:14	7:25	6:17	7:26	6:12	7:23	6:11	7:19
	16	6:29	7:23	6:17	7:13	6:21	7:14	6:23	7:15	6:29	7:12	6:17	7:09
	23	6:35	7:11	6:25	7:01	6:27	7:03	6:29	7:05	6:25	7:01	6:22	6:58
October	30	6:43	7:00	6:32	6:49	6:33	6:52	6:35	6:54	6:31	6:50	6:28	6:48
	7	6:50	6:48	6:40	6:37	6:40	6:41	6:41	6:43	6:38	6:39	6:34	6:37
	14	6:57	6:37	6:48	6:25	6:47	6:30	6:48	6:33	6:44	6:29	6:41	6:27
	21	7:05	6:27	6:56	6:15	6:54	6:20	6:54	6:24	6:51	6:19	6:47	6:18
	28	7:13	6:17	7:04	6:05	7:02	6:11	7:01	6:15	6:59	6:10	6:54	6:10
November	4	7:21	6:09	7:13	5:56	7:10	6:03	7:09	6:08	7:06	6:02	7:01	6:02
	11	6:29	5:02	6:21	4:48	6:17	4:56	6:16	5:01	6:14	4:56	6:08	4:56
	18	6:38	4:56	6:30	4:42	6:25	4:51	6:24	4:56	6:21	4:50	6:16	4:51
	25	6:45	4:52	6:38	4:38	6:33	4:47	6:31	4:53	6:29	4:47	6:23	4:48
	2	6:53	4:49	6:46	4:35	6:40	4:45	6:38	4:51	6:36	4:45	6:29	4:46
December	9	6:59	4:49	6:52	4:35	6:46	4:45	6:44	4:51	6:42	4:45	6:35	4:46
	16	7:05	4:50	6:58	4:36	6:51	4:47	6:49	4:52	6:47	4:46	6:40	4:48
	23	7:08	4:53	7:02	4:39	6:55	4:50	6:53	4:56	6:51	4:49	6:44	4:51
	30	7:11	4:58	7:04	4:44	6:57	4:54	6:55	5:00	6:53	4:54	6:47	4:56
	6	7:11	5:04	7:04	4:50	6:58	5:00	6:55	5:06	6:54	5:00	6:47	5:02
January	13	7:09	5:12	7:02	4:58	6:57	5:07	6:54	5:13	6:53	5:07	6:46	5:08
	20	7:06	5:20	6:58	5:06	6:54	5:15	6:52	5:20	6:50	5:14	6:44	5:16
	27	7:01	5:28	6:53	5:15	6:49	5:23	6:47	5:28	6:45	5:22	6:40	5:23
	3	6:55	5:37	6:46	5:24	6:43	5:31	6:42	5:36	6:39	5:30	6:34	5:31
	10	6:47	5:45	6:38	5:33	6:35	5:40	6:35	5:44	6:32	5:38	6:27	5:38

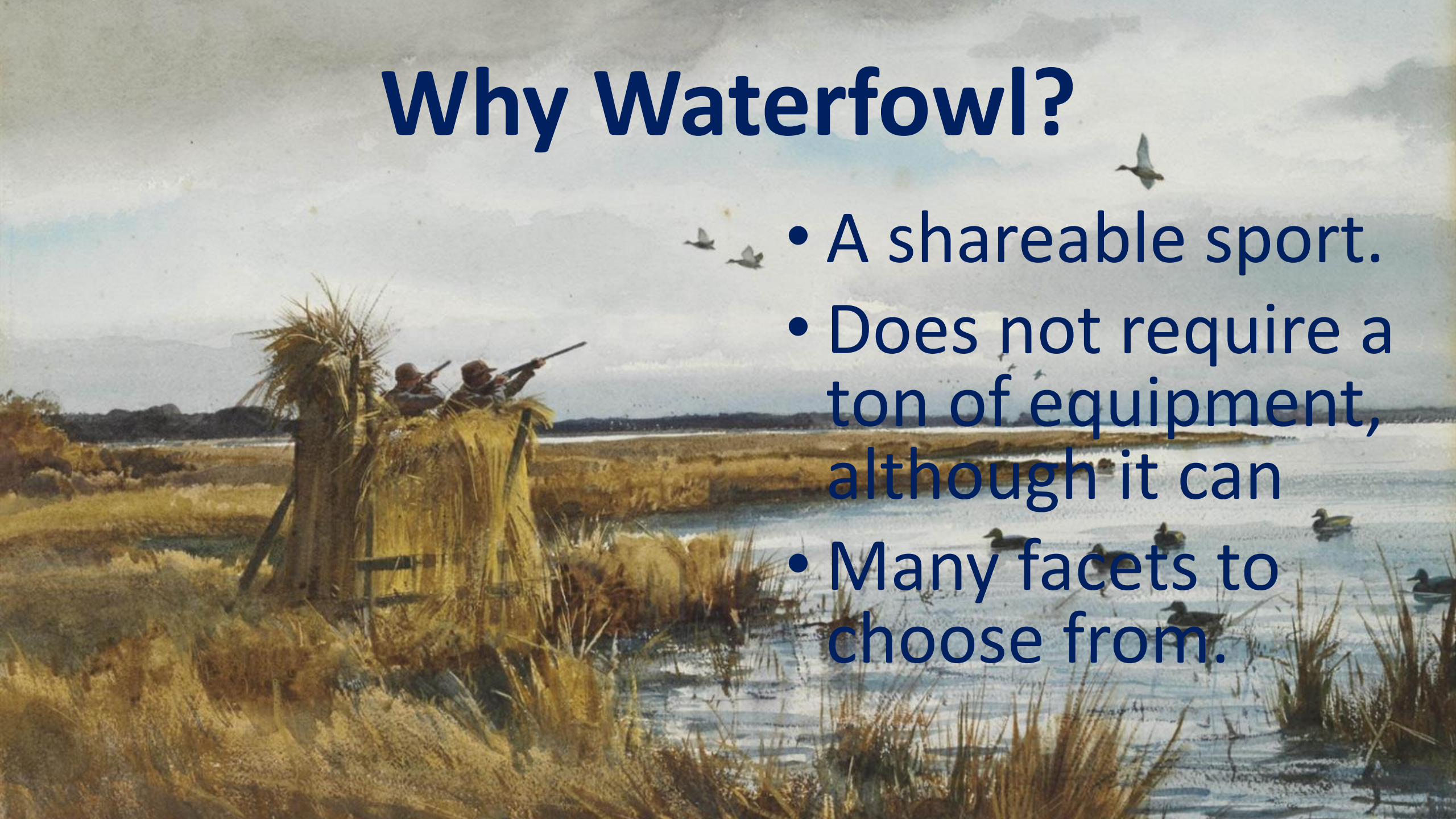
SOUTHERN CALIFORNIA

		PASO ROBLES		KERN		BISHOP		LOS ANGELES		SAN DIEGO		IMPERIAL VALLEY	
		AM	PM	AM	PM	AM	PM	AM	PM	AM	PM	AM	PM
September	1	6:05	7:29	5:59	7:22	5:54	7:22	5:57	7:19	5:54	7:13	5:47	7:07
	2	6:06	7:28	5:59	7:21	5:55	7:20	5:58	7:17	5:54	7:11	5:48	7:05
	9	6:11	7:18	6:05	7:11	6:01	7:10	6:03	7:08	5:59	7:02	5:52	6:56
	16	6:16	7:08	6:10	7:01	6:07	6:59	6:08	6:58	6:03	6:53	5:57	6:47
	23	6:22	6:57	6:15	6:51	6:13	6:48	6:13	6:48	6:08	6:43	6:01	6:37
October	30	6:27	6:47	6:20	6:41	6:18	6:38	6:18	6:39	6:12	6:34	6:06	6:28
	7	6:33	6:37	6:26	6:31	6:25	6:27	6:23	6:29	6:17	6:25	6:11	6:19
	14	6:38	6:28	6:32	6:22	6:31	6:17	6:28	6:20	6:22	6:16	6:16	6:10
	21	6:45	6:19	6:38	6:13	6:38	6:08	6:34	6:12	6:28	6:08	6:21	6:02
	28	6:51	6:11	6:44	6:05	6:45	6:00	6:40	6:04	6:33	6:01	6:27	5:55
November	4	6:58	6:04	6:51	5:58	6:52	5:52	6:46	5:58	6:39	5:55	6:33	5:48
	11	6:04	4:59	5:58	4:52	5:59	4:46	5:53	4:52	5:45	4:50	5:39	4:43
	18	6:11	4:54	6:05	4:48	6:06	4:41	5:59	4:48	5:52	4:46	5:46	4:39
	25	6:18	4:51	6:11	4:45	6:14	4:38	6:06	4:45	5:58	4:43	5:52	4:37
	2	6:25	4:50	6:18	4:43	6:20	4:36	6:12	4:44	6:04	4:42	5:58	4:36
December	9	6:30	4:50	6:24	4:44	6:26	4:36	6:18	4:44	6:10	4:43	6:03	4:36
	16	6:35	4:52	6:28	4:45	6:31	4:37	6:23	4:46	6:14	4:45	6:08	4:38
	23	6:39	4:55	6:32	4:49	6:35	4:41	6:26	4:49	6:18	4:48	6:12	4:41
	30	6:42	4:59	6:35	4:53	6:38	4:45	6:29	4:54	6:21	4:52	6:14	4:46
	6	6:42	5:05	6:35	4:59	6:38	4:51	6:30	4:59	6:22	4:58	6:16	4:51
January	13	6:42	5:11	6:35	5:05	6:37	4:58	6:29	5:06	6:21	5:04	6:15	4:57
	20	6:39	5:18	6:33	5:12	6:35	5:05	6:27	5:12	6:20	5:10	6:13	5:04
	27	6:36	5:26	6:29	5:19	6:30	5:13	6:24	5:19	6:16	5:17	6:10	5:10
	3	6:31	5:33	6:24	5:26	6:25	5:20	6:19	5:26	6:12	5:23	6:06	5:17
	10	6:24	5:40	6:17	5:33	6:18	5:28	6:13	5:33	6:06	5:30	6:00	5:23

Note: Daylight Saving Time changes to standard time on November 5.

Why Waterfowl?

- A shareable sport.
- Does not require a ton of equipment, although it can
- Many facets to choose from.



Why Waterfowl?

- Special Junior Days
 - Prior to or after the season



Why Waterfowl?

- High encounter rate
 - California hosts about 39 different species and subspecies of waterfowl and provides vital winter habitat for about 60 percent of the waterfowl population in the Pacific Flyway. (annually estimated to be between 4 - 6 million birds)



**Bottomline, We host a lot of
ducks!**



How are Waterfowl Laws Created

- North America and Mexico are divided into 4 administrative flyways. Representatives from each state are on the councils
- The Pacific Flyway Council makes season and harvest recommendations to USFWS.
- The USFWS develops Recommended regulations framework each state to adopt.
- The Ca Fish and Game Commission has public hearings on recommended regulations and votes on final version of regulations. Done in April.



Why Waterfowl?

- Liberal limits
 - Up to seven ducks
 - Up to 30 geese.



Where do we start?



Where do we start?

Shotguns

- Capable of shooting steel or other non-toxic shot
- Plugged-no more than 3 shells
- Camo/synthetic, pump/semi, your choice really, what do you want?
- Reliable and easy to clean.
- Multiple choke options
- With sling or without



Where do we start?



- **Shotshells**
 - Do not have to be the biggest, fastest and most expensive.
 - \$6 per box at Walmart, 1 oz #6 work fine.

Where do we start?

- Waders

- Made out of many materials

- Rubber
- Neoprene
- PVC
- Breathables

- Prices vary as does quality

- As cheap as \$60
- As expensive as \$549

- Heavy insulation not needed for most CA conditions.



Breeding and Wintering Waterfowl in California



Project Background

- USGS partnering with CDFW and DWR to study waterfowl and waterbird populations in Suisun Marsh, California
- In 2015 started a 10 year study looking at effects of tidal marsh restoration in Suisun
- Component of the research involves the use of GPS telemetry to monitor waterfowl movements



Research objectives

- Life cycle of different species
 - Nesting
 - Brooding
 - Molting
 - Migration
- Species differences
- Space use and movements
 - Roosting/Foraging areas (daily and seasonal)
 - Variables affecting movements (i.e. hunting, weather)
- Habitat use regionally



WIGEON



SHOVELER



MALLARD



PINTAIL



GADWALL

Monitoring Winter Movements:





GSM/GPS Transmitter (locations via cell phone network)

Gadwall Distribution

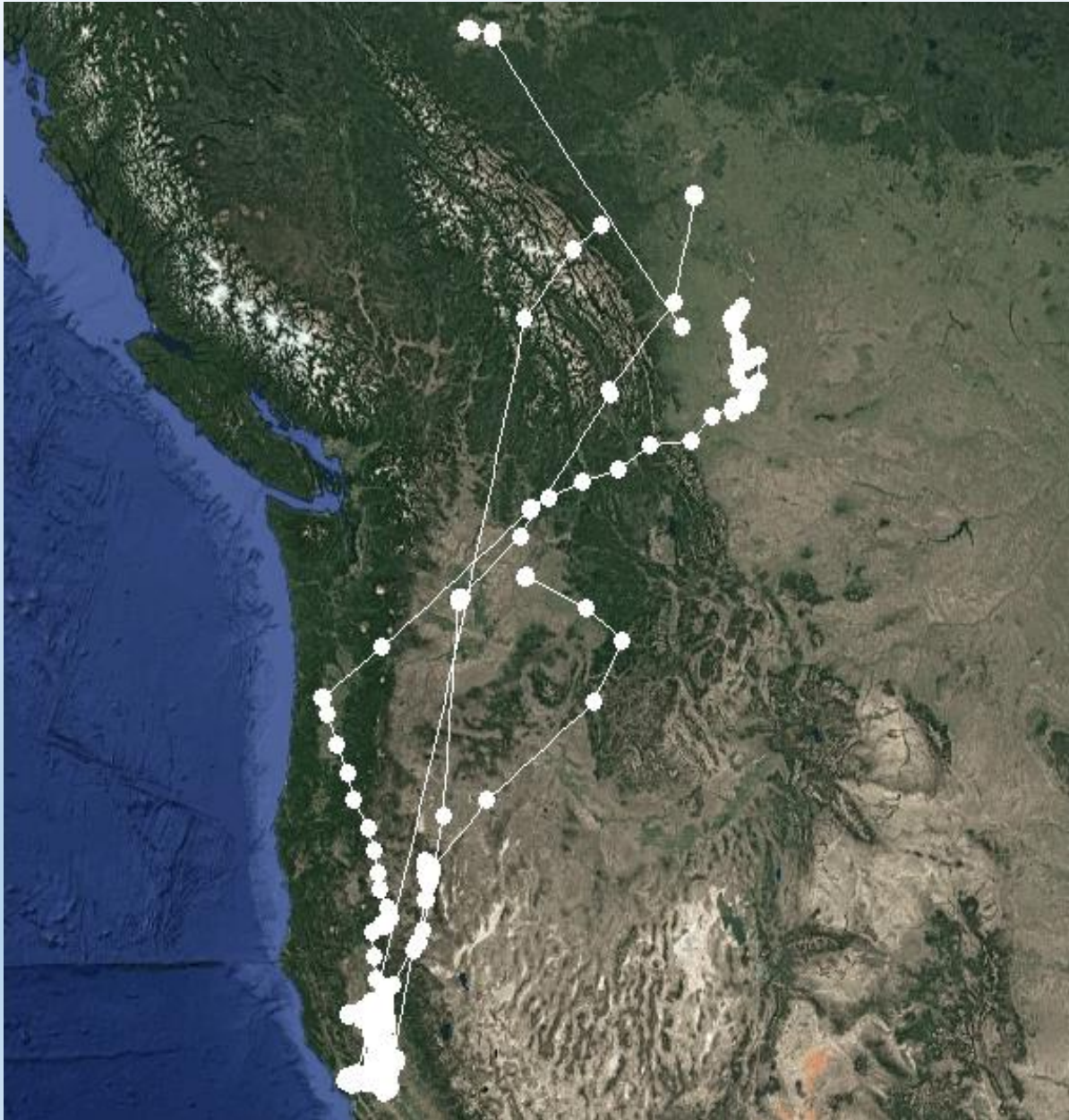


Important Links:

- **Sacramento Valley**
- **San Joaquin Valley**
- **Klamath Basin**



American Wigeon Distribution

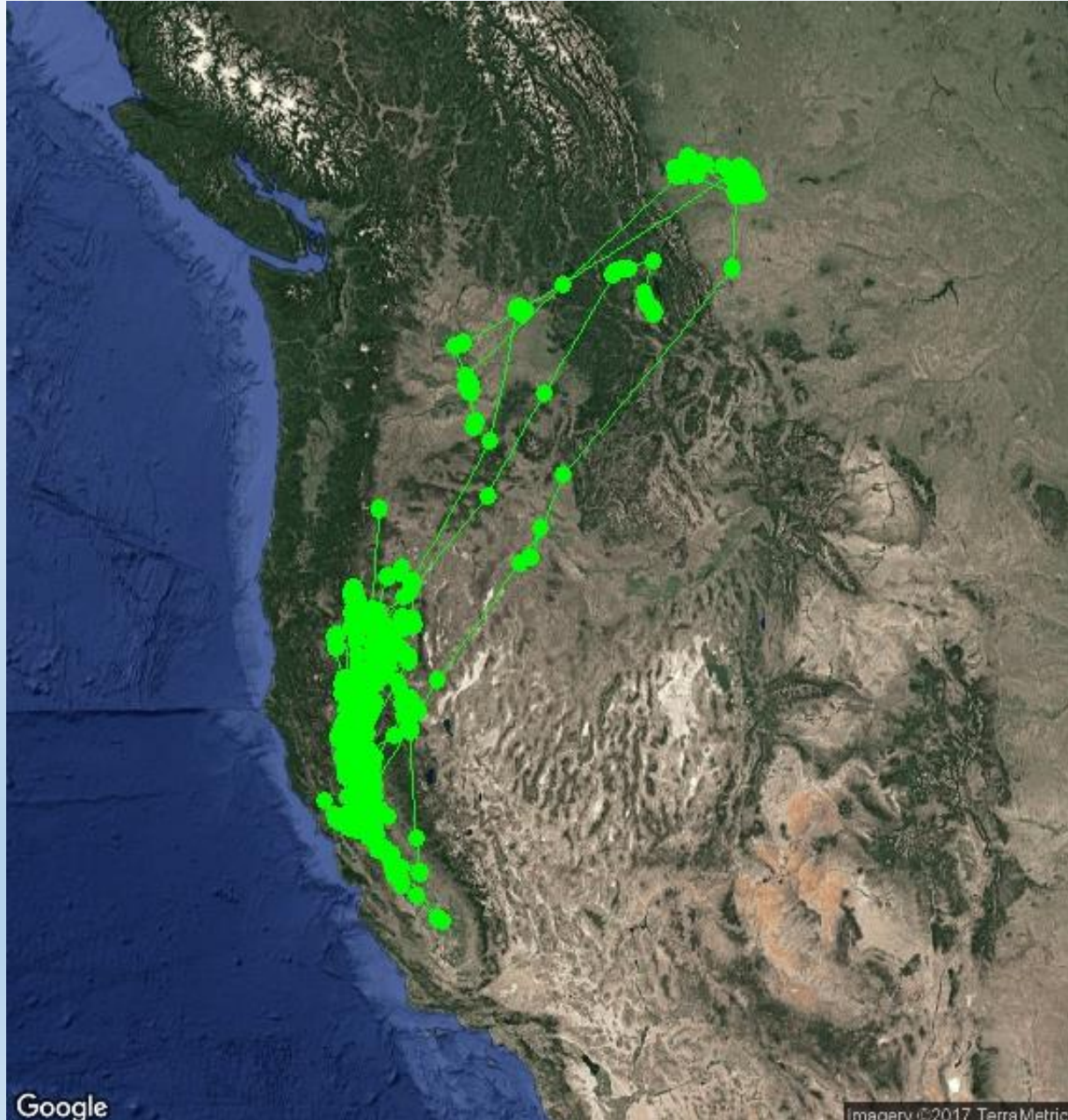


Important Links:

- **Sacramento Valley**
- **San Joaquin Valley**
- **Canadian Prairie Pothole**



Mallard Distribution

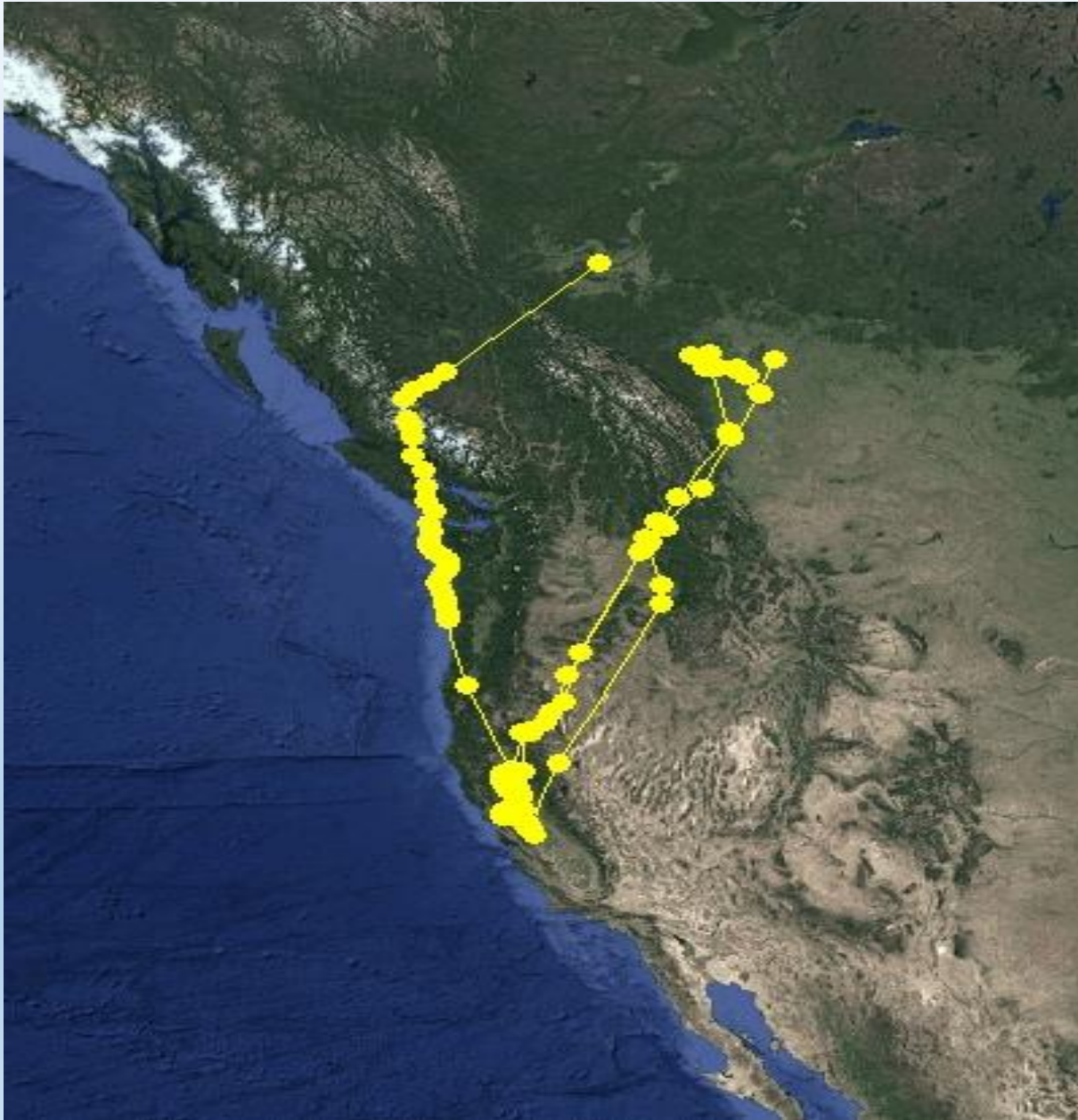


Important Links:

- **Sacramento Valley**
- **San Joaquin Valley**
- **Canadian Prairie Pothole**
- **Klamath Basin**
- **Eastern Oregon and Washington**



Northern Shoveler Distribution

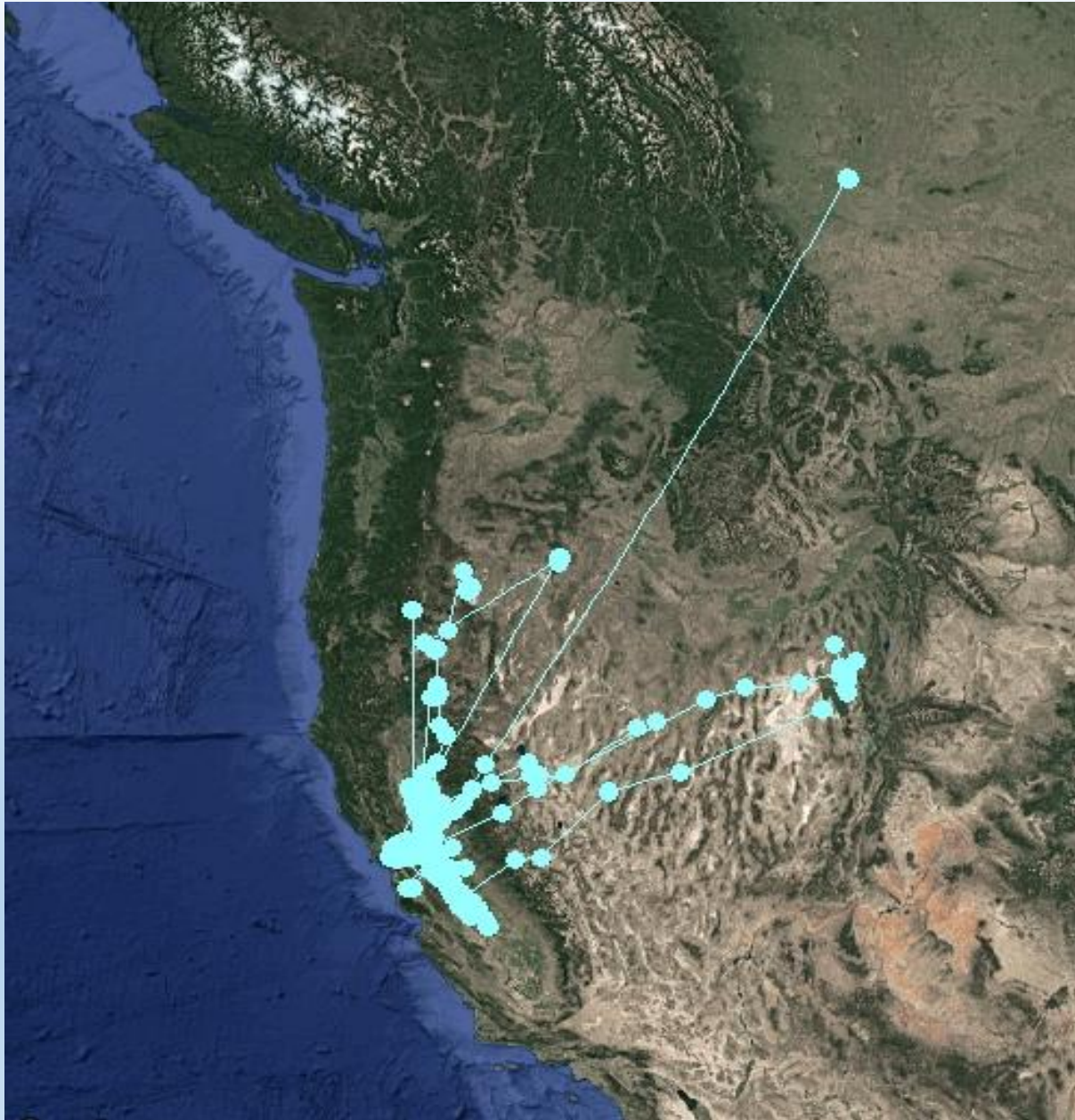


Important Links:

- **Sacramento Valley**
- **San Joaquin Valley**
- **Canadian Prairie Pothole**
- **Klamath Basin**
- **Pacific Northwest**

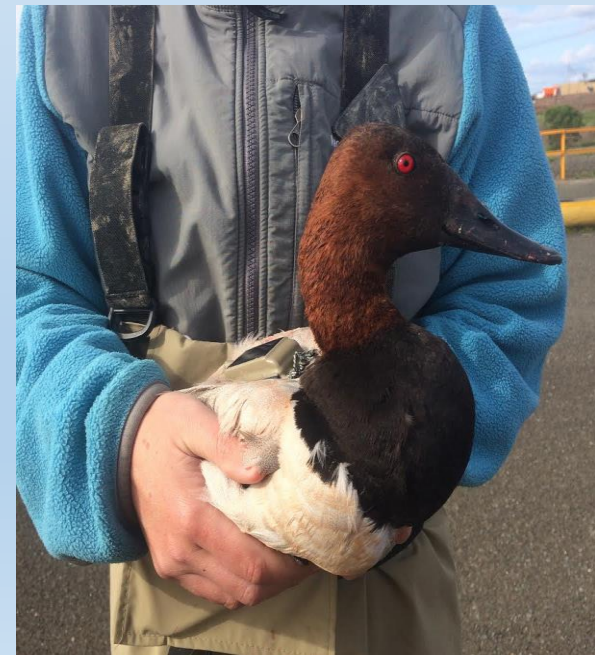


Canvasback Distribution



Important Links:

- **Sacramento Valley**
- **San Joaquin Valley**
- **Canadian Prairie**
- **Pothole**
- **Klamath Basin**
- **Great Basin**



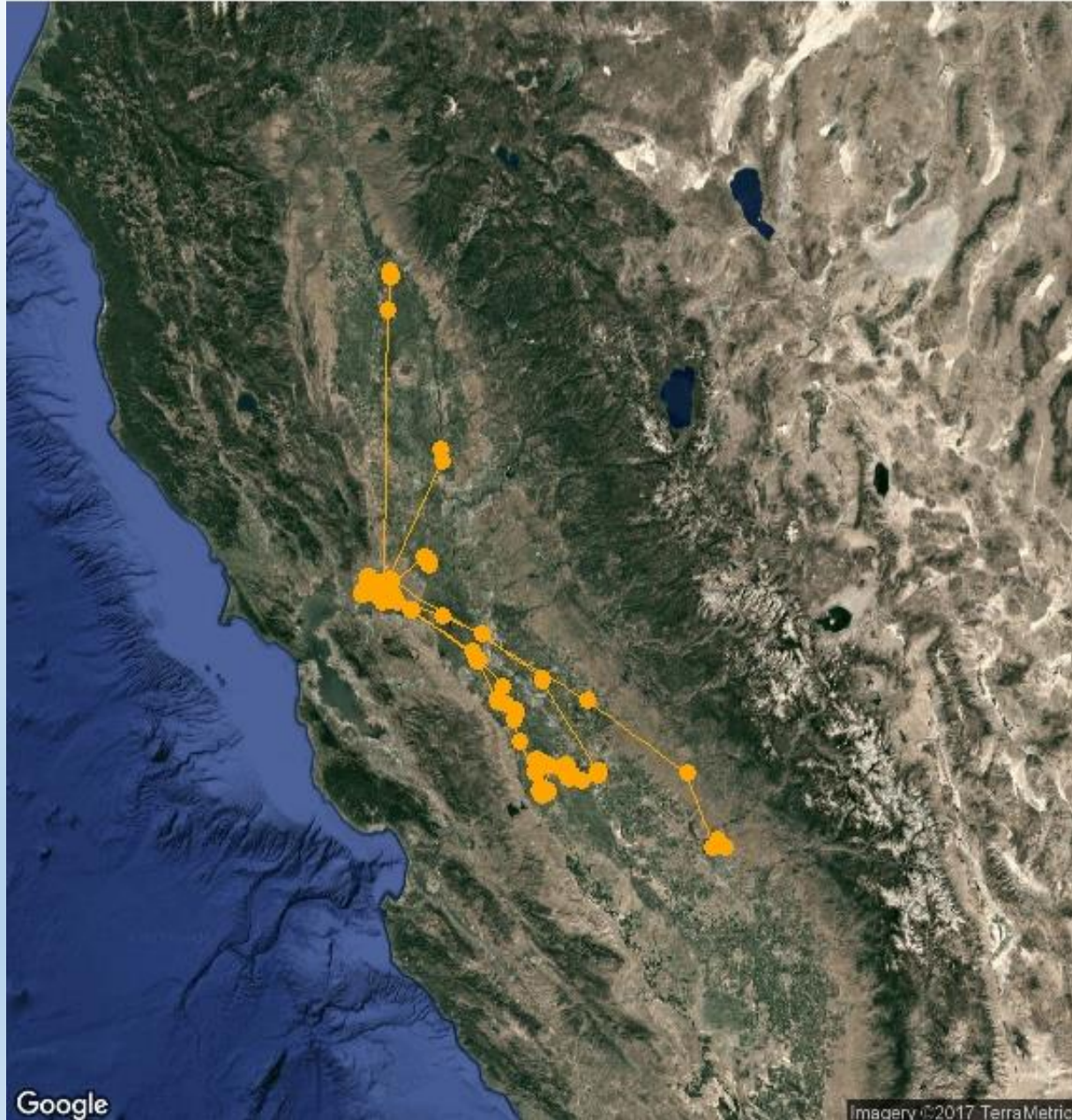
Northern Pintail Distribution



Important Links:

- **Sacramento Valley**
- **San Joaquin Valley**
- **Canadian Prairie**
Pothole
- **Klamath Basin**
- **Eastern Oregon and**
Washington
- **Great Basin**
- **Western Boreal**
Forest
- **Alaska**
- **Mississippi Alluvial**
Valley

Cinnamon Teal Distribution



Important Links:

- **Sacramento Valley**
- **San Joaquin Valley**



READY, SET, GO!

With this information, you are now ready to complete your 2018 Correspondence Course.

To-Do List:

- ☒ Review Correspondence course Powerpoint/PDF study material
 - ☐ Register on Kalkomey: <https://www.register-ed.com/events/view/125915>
 - ☐ Complete the Survey Monkey exam: <https://www.surveymonkey.com/r/C3BXLRX>
- ** Note: Failure to complete ALL requirements above will result in an INCOMPLETE.**

Finish all the requirements, and you are done! Your hours will be automatically credited from your registration. If there are any issues, YOUR COORDINATOR WILL CONTACT YOU. If you do not hear from a coordinator or hunter education staff member, no further action is required, and you have successfully fulfilled the requirements for the hunter education instructor training in 2018.

The End--Thank You!!

