



EDMUND G. BROWN Jr., Governor
NATURAL RESOURCES AGENCY
DEPARTMENT OF FISH AND WILDLIFE
WILDLIFE CONSERVATION BOARD
Mailing Address: P.O. Box 944209
Sacramento, California 94244-2090
www.wcb.ca.gov
(916) 445-8448
Fax (916) 323-0280

Notice of Meeting

WILDLIFE CONSERVATION BOARD

November 15, 2018, 10:00 a.m.

Natural Resources Building, First Floor Auditorium
1416 9th Street
Sacramento, CA 95814

Final Agenda

<u>Item Number</u>	<u>Page</u>
1. Roll Call	
2. Public Forum for Items not on the Agenda	
3. Funding Status — Informational	
4. Proposed Consent Calendar (Items 5 – 11)	
*5. Approval of Minutes — May 24, 2018 and August 30, 2018 Approval of March 22, 2018 WCB Stream Flow Enhancement Program Minutes	
*6. Recovery of Funds	

*Proposed Consent Calendar

***7. Shasta Valley Wildlife Area Fishing Access, Augmentation**

Siskiyou County

\$150,000.00

To consider the allocation for an augmentation to an existing grant to the California Department of Fish and Wildlife (CDFW) to improve fishing access to Trout Lake on CDFW's Shasta Valley Wildlife Area. The purposes of this project are consistent with the authorized uses of the proposed funding source, which allows for the development of public access facilities for hunting, fishing and other wildlife compatible recreational activities. [California Clean Water, Clean Air, Safe Neighborhood Parks and Coastal Protection Fund (Proposition 40), Public Resources Code Section 5096.650(a)].

***8. Humbug Valley**

Plumas County

\$0.00

To consider the acceptance of a conservation easement over 2,325± acres of land by the California Department of Fish and Wildlife, which will be held with the Feather River Land Trust as co-grantee, for a cooperative project with the Maidu Consortium and Pacific Gas and Electric for the protection of the culturally significant Tasmam Koyòm homeland of the Maidu, and to provide wildlife corridors, future wildlife oriented public use opportunities, and protection of the Yellow Creek fishery, located near Portola in Plumas County.

***9. Hallelujah Junction Wildlife Area, Expansion 7**

Sierra County

\$92,000.00

To consider the acquisition in fee of 162± acres of land as an expansion to the California Department of Fish and Wildlife's Hallelujah Junction Wildlife Area for the protection of habitat supporting the Truckee-Loyalton deer herd and to enhance habitat linkages and connectivity, located near the Nevada border in Sierra County. The purposes of this project are consistent with the authorized uses of the proposed funding source, which allows for the acquisition of habitat to protect deer and mountain lions. [Habitat Conservation Fund (Proposition 117), Fish and Game Code Section 2786(a)].

***10. Jamul Creek Watershed Riparian Restoration, Augmentation**

San Diego County

\$375,000.00

To consider the allocation for an augmentation to an existing grant to River Partners to restore 36 additional acres of riparian and coastal sage scrub habitat at the Hollenbeck Wildlife Area in San Diego County. The purposes of this project are consistent with the authorized uses of the proposed funding source, which allows for the acquisition, restoration or enhancement of riparian habitat and aquatic habitat for salmonids and trout [Habitat Conservation Fund (Proposition 117), Fish and Game Code Section 2786(e/f)], and to protect or enhance a flood protection corridor or bypass. [Habitat Conservation Fund (Proposition 117), Fish and Game Code Section 2786(e/f) (Proposition 1E)].

***11. Morongo Basin, Expansion 4**

San Bernardino County

\$96,000.00

To consider the allocation for a grant to the Mojave Desert Land Trust to acquire 320± acres of land for the protection of desert habitat corridors in the Morongo Basin, located near the community of Joshua Tree in San Bernardino County. The purposes of this project are consistent with the proposed funding source that allows for the acquisition of habitat to protect rare, endangered, threatened or fully protected species. [Habitat Conservation Fund (Proposition 117), Fish and Game Code Section 2786(b/c)].

12. Humboldt State University/Arcata Jacoby Creek

Forest - Expansion 5

Humboldt County

\$1,725,000.00

To consider the allocation for a grant to the City of Arcata and Humboldt State University for a cooperative project with the California Department of Forestry and Fire Protection (CALFIRE), the California Department of Fish and Wildlife, and the California Natural Resources Agency to acquire 967± acres (Property) of land within the Jacoby Creek watershed and the acceptance of a conservation easement over the Property by CALFIRE. The purpose of the project is to protect threatened and endangered species, working forest lands, forest reserve areas, watersheds, fisheries, recreational opportunities, and habitat linkages, located near Arcata in Humboldt County. The purposes of this project are consistent with the authorized uses of the proposed funding source, which allows for the development, rehabilitation, restoration, acquisition, and protection of habitat that accomplishes one or more of the following objectives: promotes recovery of threatened and endangered species, protects habitat corridors, and protects significant natural landscapes and ecosystems. [Safe Drinking Water, Water Quality and Supply, Flood Control, River and Coastal Protection Fund of 2006 (Proposition 84), Public Resources Code Section 75055(b)].

13. Lower American River Natural Resources Management Plan

Sacramento County

\$500,000.00

To consider the allocation for a grant to Sacramento County Regional Parks for the development of a Natural Resources Management Plan, including State and federal environmental review, for the Lower American River from Hazel Avenue downstream to the confluence of the American and Sacramento Rivers in Sacramento County. The purposes of this project are consistent with the authorized uses of the proposed funding source, which allows expenditures to be made available to the Lower American River Conservancy Program pursuant to the Lower American River Conservancy Program Act (Public Resources Code Section 5845 et seq.). [General Fund, Budget Act, Chapter 14, Statutes of 2017].

14. Contra Loma Regional Park Fishing Access

Contra Costa County

\$250,000.00

To consider the allocation for a grant to the East Bay Regional Park District for a cooperative project with the Bureau of Reclamation to replace the fishing dock, upgrade restrooms, and provide ADA access at the Channel Point area of Contra Loma Regional Park, located in the City of Antioch in Contra Costa County. The purposes of this project are consistent with the authorized uses of the proposed funding source, which allows for the development of public access facilities for hunting, fishing and other wildlife compatible recreational activities. [Wildlife Restoration Fund, Local Assistance].

15. Shasta Big Springs Acquisition Update

Information/Action

Staff will provide update regarding project status.

16. Strategic Plan Update

Informational item regarding the update of WCB's Strategic Plan, as required by Proposition 68.

17. Proposition 68 Guidelines

Board will be asked to approve these guidelines.

18. 2019 Board Meeting Dates

Board will be asked to approve WCB meetings dates for 2019.

Option 1

March 7, 2019

May 23, 2019

August 22, 2019

November 21, 2019

Option 2

February 27, 2019

May 22, 2019

August 28, 2019

November 27, 2019

Stream Flow Enhancement Board Meeting

April 4, 2019

Adjourn

PERSONS WITH DISABILITIES

Persons with disabilities needing reasonable accommodation to participate in public meetings or other CDFW activities are invited to contact the Department's EEO Officer at (916) 653-9089 or EEO@wildlife.ca.gov. Accommodation requests for facility and/or meeting accessibility should be received by October 25, 2018. Requests for American Sign Language Interpreters should be submitted at least two weeks prior to the event, and requests for Real-Time Captioners at least four weeks prior to the event. These timeframes are to help ensure that the requested accommodation is met. If a request for an accommodation has been submitted but is no longer needed, please contact the EEO Officer immediately.

WILDLIFE CONSERVATION BOARD

November 15, 2018
10:00 a.m.

Natural Resources Building
First Floor Auditorium
1416 9th Street
Sacramento, California 95814

1. **Roll Call**

Wildlife Conservation Board Members

Charlton H. Bonham, Chair
Director, Department of Fish and Wildlife

Alina Bokde, Public Member

Keely Bosler, Member
Director, Department of Finance

Diane Colborn, Public Member

Mary Creasman, Public Member

Fran Pavley, Public Member

Eric Sklar, Member
President Fish and Game Commission

Joint Legislative Advisory Committee
Senator Jean Fuller

Senator Nancy Skinner

Senator (*vacant*)

Assemblymember Laura Friedman
Assemblymember Al Muratsuchi –Alternate

Assemblymember Eduardo Garcia
Assemblymember Miguel Santiago –Alternate

Assemblymember Monique Limon
Assemblymember Marc Levine -Alternate

Executive Director
John P. Donnelly

2. Public Forum for Items not on this Agenda

An opportunity for the general public to share comments or concerns on topics that are not included in this agenda. The Board may not discuss or take action on any matter raised during this item, except to decide whether to place the matter on the agenda of a future meeting. (Sections 11125, 11125.7(a), Government Code)

3. Funding Status

Informational

The following funding status depicts Capital Outlay and Local Assistance appropriations by year of appropriation and by fund source and fund number.

WILDLIFE RESTORATION FUND (0447)		\$1,000,000.00
	November 2018 Board Meeting Allocation:	(250,000.00)
	Total Project Development:	(650,000.00)
	Projected Unallocated Balance:	\$100,000.00
HABITAT CONSERVATION FUND (0262)		\$81,374,487.00
	November 2018 Board Meeting Allocation:	(603,000.00)
	Total Project Development:	(39,817,345.00)
	Projected Unallocated Balance:	\$40,954,142.00
SAFE NEIGHBORHOOD PARKS, CLEAN WATER, CLEAN AIR, AND COASTAL PROTECTION BOND FUND (Proposition 12) (0005)		\$3,893,880.00
	November 2018 Board Meeting Allocation:	0.00
	Total Project Development:	(110,000.00)
	Projected Unallocated Balance:	\$3,783,880.00
CALIFORNIA CLEAN WATER, CLEAN AIR, SAFE NEIGHBORHOOD PARKS AND COASTAL PROTECTION BOND FUND (Proposition 40) (6029)		\$8,648,648.00
	November 2018 Board Meeting Allocation:	(150,000.00)
	Total Project Development:	(7,816,803.00)
	Projected Unallocated Balance:	\$681,845.00
WATER SECURITY, CLEAN DRINKING WATER, COASTAL AND BEACH PROTECTION FUND OF 2002 (Proposition 50) (6031)		\$26,988,779.41
	November 2018 Board Meeting Allocation:	0.00
	Total Project Development:	(18,916,980.00)
	Projected Unallocated Balance:	\$8,071,799.41
SAFE DRINKING WATER, WATER QUALITY AND SUPPLY, FLOOD CONTROL, RIVER AND COASTAL PROTECTION FUND OF 2006 (Proposition 84) (6051)		\$29,344,695.94
	November 2018 Board Meeting Allocation:	(1,755,000.00)
	Total Project Development:	(9,745,819.94)
	Projected Unallocated Balance:	\$17,843,876.00
WATER QUALITY, SUPPLY, AND INFRASTRUCTURE IMPROVEMENT FUND (Proposition 1) (6083)		\$93,866,681.36
	November 2018 Board Meeting Allocation:	0.00
	Total Project Development:	0.00
	Projected Unallocated Balance:	\$93,866,681.36
THE CALIFORNIA DROUGHT, WATER, PARKS, CLIMATE, COASTAL PROTECTION, AND OUTDOOR ACCESS FOR ALL ACT OF 2018 (Proposition 68) (6088)		\$71,000,000.00
	November 2018 Board Meeting Allocation:	\$0.00
	Total Project Development:	(\$3,000,000.00)
	Projected Unallocated Balance:	\$68,000,000.00

Wildlife Conservation Board Meeting, November 15, 2018

GENERAL FUND (0001)		\$13,975,000.00
	November 2018 Board Meeting Allocation:	(500,000.00)
	Total Project Development:	0.00
	Projected Unallocated Balance:	\$13,475,000.00
GREENHOUSE GAS REDUCTION FUND (3228)		\$20,000,000.00
	November 2018 Board Meeting Allocation:	0.00
	Total Project Development:	0.00
	Projected Unallocated Balance:	\$20,000,000.00
TOTAL – ALL FUNDS		\$350,092,171.71
	Grand Total - November 2018 Board Meeting Allocation:	(3,258,000.00)
	Grand Total -Project Development	(77,056,947.94)
		269,777,223.77
RECAP OF NATURAL HERITAGE PRESERVATION TAX CREDIT ACT OF 2000		
Natural Heritage Preservation Tax Credit Act of 2000		
Chapter 113, Statutes of 2000 and Chapter 715, Statutes of 2004 (through 6/30/08)		\$48,598,734.00
Chapter 220, Statutes of 2009 (effective 1/1/10)		\$8,662,500.00

[Back to Top](#)

4. Proposed Consent Calendar (Items 5-11)

***5. Approval of Minutes — May 24, 2018 and August 30, 2018
Approval of March 22, 2018 WCB Stream Flow Enhancement Program Minutes**

***6. Recovery of Funds**

The following projects previously authorized by the Board are now completed, and some have balances of funds that can be recovered and returned to their respective funds. It is recommended that the following totals be recovered and that the projects be closed.

RECOVERIES BY FUND	Amount
Habitat Conservation Fund	\$41,434.00
California Clean Water, Clean Air, Safe Neighborhood Parks, and Coastal Protection Fund	\$47,202.74
Water Security, Clean Drinking Water, Coastal and Beach Protection Fund of 2002	\$0.00
Safe Drinking Water, Water Quality and Supply, Flood Control, River and Coastal Protection Fund of 2006	\$4,663,919.19
Total Recoveries for All Funds	\$4,752,555.93

Habitat Conservation Fund	Allocated	Expended	Balance
Coachella Valley Stormwater Channel and Delta Conservation Area, Mecca Land Development Property	\$75,000.00	\$73,344.00	\$1,656.00
Lower Sonoma Creek Wetland Enhancement	\$700,000.00	\$700,000.00	\$0.00
Palo Verde Ecological Reserve, Expansion 4 (Crescent Shores)	\$1,885,000.00	\$1,861,053.00	\$23,947.00
Wheeler Ridge, Expansion 6 (Adriani)	\$305,000.00	\$289,169.00	\$15,831.00
Total Recoveries to Habitat Conservation Fund			\$41,434.00

California Clean Water, Clean Air, Safe Neighborhood Parks, and Coastal Protection Fund	Allocated	Expended	Balance
Carmel River, San Clemente Dam Removal	\$7,000,000.00	\$7,000,000.00	\$0.00
Carmel River, San Clemente Dam Removal, Augmentation	\$1,000,000.00	\$1,000,000.00	\$0.00
McCloud Soda Springs Working Forest	\$610,000.00	\$599,100.00	\$10,900.00
San Joaquin River Parkway, River Vista Public Access Planning and Environmental Review	\$180,000.00	\$143,697.26	\$36,302.74
Total Recoveries to California Clean Water, Clean Air, Safe Neighborhood Parks, and Coastal Protection Fund			\$47,202.74

Water Security, Clean Drinking Water, Coastal and Beach Protection Fund of 2002	Allocated	Expended	Balance
Lower Sonoma Creek Wetland Enhancement	\$1,000,000.00	\$1,000,000.00	\$0.00
Total Recoveries to Water Security, Clean Drinking Water, Coastal and Beach Protection Fund of 2002			\$0.00

Safe Drinking Water, Water Quality and Supply, Flood Control, River and Coastal Protection Fund of 2006	Allocated	Expended	Balance
Alameda County Stock Pond Enhancement, Phase II	\$85,800.00	\$0.00	\$85,800.00
Alameda County Stock Pond Habitat Enhancement	\$200,000.00	\$99,883.18	\$100,116.82
C& R Ranch Habitat Enhancement	\$270,000.00	\$266,806.00	\$3,194.00
Coal Oil Point Reserve Improvements	\$505,000.00	\$505,000.00	\$0.00
Leininger Ranch Habitat Improvement	\$271,000.00	\$269,586.63	\$1,413.37
Reef to Ridge Coastal Forest Protection Project	\$4,480,000.00	\$11,605.00	\$4,468,395.00
Yucca Loma Road/Yates Blvd/Green Tree Blvd Transportation Improvement Project Parkland Conversion	\$5,000.00	\$0.00	\$5,000.00
Total Recoveries to Safe Drinking Water, Water Quality and Supply, Flood Control, River and Coastal Protection Fund of 2006			\$4,663,919.19

[Back to Top](#)

***7. Shasta Valley Wildlife Area Fishing Access, Augmentation
Siskiyou County
\$150,000**

This proposal is to consider the allocation for an augmentation to an existing grant to the California Department of Fish and Wildlife (CDFW) to improve fishing access to Trout Lake on CDFW's Shasta Valley Wildlife Area (SVWA).

LOCATION

The SVWA was acquired by CDFW and designated as a wildlife area by the Fish and Game Commission in 1991. It contains approximately 4,700 acres of Great Basin juniper woodland, riparian forest, seasonal wetlands, and crop lands, with Mt. Shasta as a backdrop. Sandhill cranes, waterfowl, raptors, and shorebirds are commonly seen at Shasta Valley. Deer, porcupines, and coyotes are among the mammals present. There are three deep water reservoirs, including Trout Lake, and numerous seasonal wetlands in the SVWA. The SVWA is approximately 1.5 miles east of the town of Montague in Siskiyou County.

PROJECT DESCRIPTION

In 2017, CDFW entered into a grant agreement with WCB to improve launching capabilities and provide safe access to the fishing opportunities at Trout Lake to accommodate the expected increase in annual usage of the facility. The project proposed to widen and repave the SVWA entrance road, replace/repair the public access bridge located on the Little Shasta River, and improve the boat launch facility at Trout Lake.

The boat launch facility has been substantially completed as proposed within the original construction budget.

The initial design for the bridge improvements included removing the existing timber bridge and replacing it in kind with a steel deck bridge and cantilevered pedestrian pathway, using the same abutments. However, consultation with CDFW staff identified the need for the bridge to be strong enough to support a CALFIRE truck in case of a fire. The original design was not sized appropriately to handle such a large vehicle. The re-design of the bridge created a tremendous escalation in the budget; a scope change and budget augmentation is now necessary. The budget for the bridge has increased from \$75,285 to \$350,000. The proposed signage and entry road improvements will be removed from the project to decrease cost. Should the bridge come in under budget, the remaining funds would be eligible to improve the entrance road, consistent with the original project.

WCB PROGRAM

The proposed project will be funded through the Public Access Program and meets the program's goal of providing public access for hunting, fishing, or other wildlife-oriented recreation statewide.

STRATEGIC PLAN CONSISTENCY

The project furthers the following goals outlined in the WCB Strategic Plan:

Goal C.1 – Support a wide range of recreational activities (e.g., hunting, fishing, birding, hiking, camping, photography, etc.) in conjunction with other land uses and without degrading environmental resources.

Goal C.4 – Place greater emphasis on projects that accommodate compatible wildlife-oriented public uses, while supporting urban areas and disadvantaged communities.

The construction of the bridge and Trout Lake boat launch will provide a safer and more enjoyable experience for visitors, and will provide a variety of wildlife-oriented recreational activities including fishing, boating, and bird watching. These activities are compatible with the extraordinary diversity and beauty of the SVWA. The nearby communities of Montague and Yreka are classified as disadvantaged communities.

MANAGEMENT OBJECTIVES AND NEEDS

The useful life of the bridge will be 50 years or more and should require little to no maintenance. Trout Lake boat launching facility will have a useful life of more than 20 years, and is designed to withstand heavy use with minimal maintenance. The project will be managed by CDFW.

PROJECT FUNDING

The proposed funding breakdown for the project is as follows:

Task	WCB Augmentation	WCB Original Grant	Total
Entry Road	\$0	\$106,974	\$0
Bridge Replacement	\$150,000	\$75,285	\$350,000
Trout Lake BLF	\$0	\$553,707	\$700,000
Entry Sign	\$0	\$9,639	\$0
DGS Project Management	\$0	\$154,395	\$0
Total	\$150,000	\$900,000	\$1,050,000

The original project costs will be for the replacement of the bridge over the Little Shasta River; and the installation of a two-lane boat ramp, boarding floats, fishing pier, paved parking, sidewalks and other amenities at Trout Lake. The U.S. Fish and Wildlife Service's Sport Fish Restoration Act (SFRA) provides grants to States to improve or construct boat launching facilities. A SFRA grant has been awarded for the original proposal to allow for the reimbursement of 75 percent of project costs to WCB upon completion of the project. The SFRA grant will be amended to request a 75 percent reimbursement of the cost of this augmentation.

FUNDING SOURCE

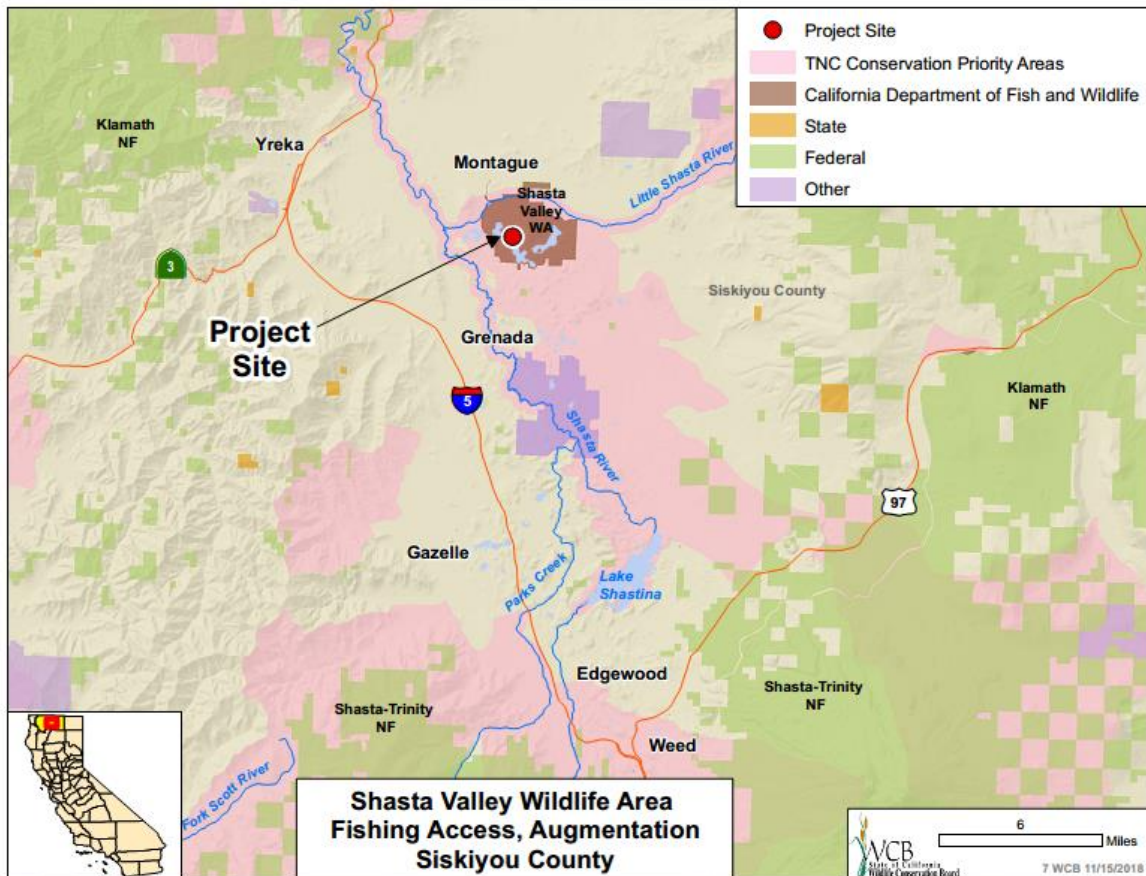
The proposed funding source for this project is the California Clean Water, Clean Air, Safe Neighborhood Parks and Coastal Protection Fund (Proposition 40), Public Resources Code Section 5096.650(a), which allows for the development of public access facilities for hunting, fishing and other wildlife compatible recreational activities, and are consistent with the purposes of this project.

CEQA AND CDFW REVIEW/ RECOMMENDATION

The CDFW, as lead agency, prepared a Negative Declaration (ND) for the project pursuant to the provisions of the California Environmental Quality Act (CEQA). Staff considered the ND and has prepared proposed, written findings documenting WCB's compliance with CEQA. Subject to approval of this proposal by the WCB, the appropriate Notice of Determination will be filed with the State Clearinghouse. CDFW has reviewed the project and recommends it for funding by the WCB.

STAFF RECOMMENDATION

Staff recommends that the Wildlife Conservation Board adopt the written findings and approve this project as proposed; allocate \$150,000.00 from California Clean Water, Clean Air, Safe Neighborhood Parks and Coastal Protection Fund (Proposition 40), Public Resources Code Section 5096.650(a); authorize the acceptance of the U.S. Fish and Wildlife Service Sport Fish Restoration Act reimbursement; authorize staff and the California Department of Fish and Wildlife to enter into appropriate agreements necessary to accomplish this project; and authorize staff and the California Department of Fish and Wildlife to proceed substantially as planned.



[Back to Top](#)

***8. Humbug Valley Conservation Easement
Plumas County
\$0.00**

This proposal is to consider the acceptance of a conservation easement (Easement) over 2,325± acres of land by the California Department of Fish and Wildlife (CDFW), which will be held with the Feather River Land Trust (FRLT) as co-grantee, for a cooperative project with the Maidu Consortium and Pacific Gas and Electric (PG&E) for the protection of the culturally significant Tàsmam Koyòm homeland of the Maidu, and to provide wildlife corridors, future wildlife oriented public use opportunities, and protection of the Yellow Creek fishery.

LOCATION AND SURROUNDING USES

The property (Property) is located 11 miles south of Chester, California and 4.5 miles west of Butt Valley Reservoir. The property is accessed from Humbug Valley Road a short distance off State Route 89.

The Property is part of the greater Feather River Watershed. Yellow Creek, which flows through the Property, originates at Eagle Rocks at 7,063 feet of elevation and flows into the Feather River at Belden Town at an elevation of 2,400 feet. The lower most 15 miles of Yellow Creek from Big Springs to the confluence with the Feather River has been designated a state wild trout stream which supports rainbow, brown, and brook trout.

Many of the surrounding lands are privately owned production forest lands or owned by the U.S. Forest Service as part of the Lassen National Forest. In addition to the forest lands, parcels closer to Lake Almanor are utilized as recreational get-a-ways and are typically less than ten acres.

PROJECT DESCRIPTION

The Property is most threatened by recreational development associated with the greater Almanor and Butt Valley Lakes. There has been substantial subdivision development in this part of the county for summer homes and recreational get-a-ways over the last 50 years. The Property is not directly threatened because it has been managed as open space, and has been open to public recreation for many years while owned by PG&E. In 2018, ownership was granted to the Maidu Consortium as part of PG&E's 2003 bankruptcy settlement, which required PG&E to protect their excess lands with easements and donate the encumbered properties to qualified owners, in this case the Maidu Consortium.

The proposed Easement will protect the Property in perpetuity and acts as a backup to the underlying conservation-minded fee ownership. The acquisition as described above is the result of PG&E's bankruptcy settlement and has been vetted by the Pacific Forest Stewardship Council (Stewardship Council), CDFW, the Maidu Consortium, PG&E, and the FRLT. The Stewardship Council was created by the bankruptcy court's settlement statement to dispose of surplus PG&E lands throughout California. FRLT and CDFW will be co-grantees for the Easement. Easement monitoring activities will be done by both organizations. The Maidu have utilized the Property for many years as their home land and have strong cultural ties to Humbug Valley known in the Maidu language as Tàsmam Koyòm.

The landscape is that of typical mountain meadow habitat fed by cold clear waters supporting grasslands and wetlands. These meadows are often grazed by cattle and are surrounded by working conifer forests. The Property is nearly surrounded by other protected lands. These adjacent protected lands include U.S. Forest Service lands

bordering the Property on the east, south, and west sides. The Property does provide linkages between landscape scale conserved properties. Additionally, the Property is located 8 miles east of the Butte Creek House Ecological Reserve.

CDFW identified that this acquisition would result in:

- Protection of functional mountain wet meadow habitat,
- Protection of 9 miles of high quality trout streams,
- Protection of water quality,
- Protection of 162 possible bird species including willow fly catcher, sandhill cranes, and northern goshawks,
- Protection of as many as 64 mammal species,
- Protection of designated Wild Trout Stream Catch-and-Release fishing access on Yellow Creek,
- Protection of historic and prehistoric sites culturally important to the Maidu, and
- Protection of public access to the creek and associated campground.

There are a few improvements on the Property including a public campground, a fishing access area, and a few recreational properties with cabins that are privately owned inholdings.

The acquisition will combat climate change by protecting the Property, as it is today, a highly functional mountain meadow. Mountain meadow habitats function as carbon sinks that absorb carbon and produce oxygen and help maintain water quality for downstream users. In addition, mountain meadows often provide refuge to wildlife during warm and dry times, providing water year round in many cases.

WCB PROGRAM

The proposed Easement acquisition is being considered under the WCB's Land Acquisition Program. The Land Acquisition Program is administered pursuant to the Board's original enabling legislation, "The Wildlife Conservation Law of 1947" (Fish and Game Section 1300, et seq.) to acquire areas that can successfully sustain wildlife and provide for suitable recreation opportunities. Under this program acquisition activities are carried out in conjunction with the CDFW, evaluating the biological values of property through development of a Land Acquisition Evaluation (LAE)/Conceptual Area Protection Plan (CAPP). The LAE/CAPP is then submitted to the Director for review and approval and later transmitted to the WCB with a recommendation to fund.

STRATEGIC PLAN GOALS

This acquisition is guided by the WCB Strategic Plan and supports the following outlined goals:

Goal A.1 – Fund projects and landscapes that provide resilience for native wildlife and plant species in the face of climate change.

Acquisition of the Property will preserve mountain meadow habitat. Mountain meadows provide important water quality and storage functions to the overall river watershed. Yellow and Humbug creeks will continue to provide the larger Feather River with clean cold water in the face of future climate change. These waters are of statewide importance to both salmonids and farmers downstream.

Goal A.4 – Invest in priority conservation projects recommended under CDFW's land acquisition evaluation process or within other conservation plans supported by CDFW.

The Property was part of an LAE and makes up a large area of working forestlands and wildlife habitat open to public recreation.

MANAGEMENT OBJECTIVES AND NEEDS

The Property will be managed on a day-to-day basis by the property owner, the Maidu Consortium. FRLT and CDFW will share monitoring of the Easement. FRLT will develop a baseline documentation report by which the acquisition can be monitored in future years. PG&E will fund an endowment in the amount of \$270,000 to be paid to the FRLT for Easement monitoring and enforcement. The easement monitoring and defense fund is a pooled, non-wasting fund held by FRLT. There are no costs involved for CDFW other than yearly monitoring visits.

Proposed public use includes hunting, fishing, hiking, wildlife viewing, and camping.

TERMS

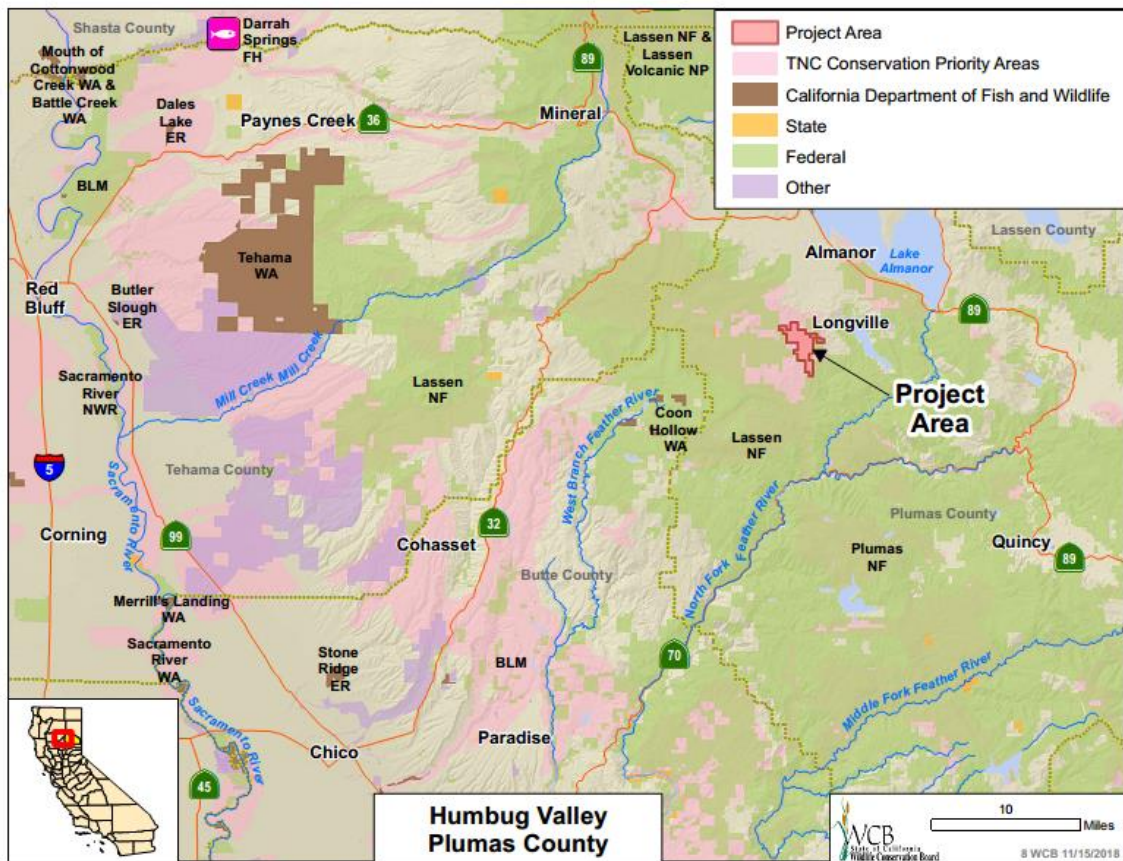
The Maidu Consortium agreed to grant the Easement to CDFW and FRLT. Staff of the WCB will review and approve all title documents, preliminary title reports, the Easement, and instruments of conveyance.

ENVIRONMENTAL COMPLIANCE AND STATE RECOMMENDATION

The acquisition has been reviewed for compliance with the California Environmental Quality Act (CEQA) requirements and is proposed as exempt under CEQA Guidelines Section 15313, Class 13, as an acquisition of land for wildlife conservation purposes, and Section 15325, Class 25, as a transfer of an ownership interest in land to preserve open space and existing natural conditions, including plant or animal habitats. Subject to authorization by the WCB, a Notice of Exemption will be filed with the State Clearinghouse.

STAFF RECOMMENDATION

Staff recommends that the Wildlife Conservation Board approve this project as proposed, authorize staff and the California Department of Fish and Wildlife to enter into appropriate agreements as necessary to accomplish this project, and authorize staff and the California Department of Fish and Wildlife to proceed substantially as planned.



[Back to Top](#)

***9. Hallelujah Junction Wildlife Area, Expansion 7**
Sierra County
\$92,000.00

This proposal is to consider the acquisition in fee of 162± acres of land as an expansion to the California Department of Fish and Wildlife's (CDFW) Hallelujah Junction Wildlife Area for the protection of habitat supporting the Loyalton-Truckee deer herd (Herd) and to enhance habitat linkages and connectivity.

LOCATION AND SURROUNDING USES

The property (Property) is located near the California and Nevada state line, approximately four miles northwest of Border Town, Nevada along State Route 395. The subject area is bounded on the north, south, and east sides by property owned by the City of Santa Clara, and by the existing CDFW wildlife area on the west side.

The Hallelujah Junction Wildlife Area is also bordered by U.S. Forest Service lands associated with the Humboldt-Toiyabe National Forest. The Property includes a number of canyons and drainages with small streams with riparian vegetation and wildlife habitat. The Property is located in a transition zone with evergreen trees on the higher elevation mountains to the west and sage scrub located on both sides of the California/Nevada border.

PROJECT DESCRIPTION

The Property consists of a single assessor parcel number and is "L" shaped. Elevations range from 5,350 to 6,025 feet. The topography ranges from gently sloping to steep and rugged, and includes grasslands, riparian, and high desert shrub habitats. This diversity of habitat types is preferred for the winter Herd range.

The Herd occupies the Property mostly during the winter months. The Herd has been experiencing stable to slightly declining numbers in recent years, and estimates by CDFW number 3,200 deer in the Herd. The deer summer on the higher elevation U.S. Forest Service and timber company-owned lands on the California side, and winter in lower elevation lands near the California/Nevada state line. This state line area winter habitat band is favored for residential and commercial development on both sides of the border, due to its relatively flat terrain and the availability of water. Land development and agricultural conversion along the border are a major reason for decreasing Herd habitat. The protection of this Property will help protect a wildlife corridor connecting wintering and summering grounds.

Several special status animal species can be found on or near the Property, including Swainson's hawk, northern goshawk, bank swallow, American badger, mountain lion, North American porcupine, willow flycatcher, greater sandhill crane, and both bald and golden eagles. Special status plants on or near the Property include Golden violet, Nevada daisy, Sierra Valley ivesia, and Webber's ivesia. Other, more common animals that call the area home include pronghorn antelope, black bear, coyote, fox, various waterfowl species, and birds of prey.

The Property, once part of the greater Hallelujah Junction Wildlife Area, will provide public access opportunities to locals and visitors along the State Route 395 corridor. Hallelujah Junction is a popular wildlife area for deer, quail, and rabbit hunters. Additionally, hikers and birdwatchers also frequent the area.

WCB PROGRAM

The proposed acquisition is being considered under the Wildlife Conservation Board's (WCB) Land Acquisition Program. The Land Acquisition Program is administered pursuant to the Board's original enabling legislation, "The Wildlife Conservation Law of 1947" (Fish and Game Code Section 1300, et seq.) authorizing the WCB to acquire real property, or rights in real property, on behalf of CDFW, grant funds to other governmental entities or nonprofit organizations to acquire real property, or rights in real property, and accept federal grant funds to facilitate acquisitions or sub-grant these federal funds to assist with acquisitions of properties.

Under the program, the WCB acquires lands and interests in land that can successfully sustain or be restored to support wildlife and, when practicable, provide suitable wildlife-oriented recreation opportunities. These activities are carried out in conjunction with the CDFW, which evaluates the biological values of property through development of a Land Acquisition Evaluation (LAE)/Conceptual Area Protection Plan (CAPP). The LAE/CAPP is submitted to CDFW's Director for final approval and submission to WCB for its consideration and recommendation to fund.

STRATEGIC PLAN GOALS

This Property is guided by the WCB Strategic Plan and supports the following outlined goals:

Goal A.1 – Fund projects and landscapes that provide resilience for native wildlife and plant species in the face of climate change.

Acquisition of the Property will preserve the Herd's traditional migration corridors that provide for transitional habitat by allowing for movement between the Property and the higher elevation peaks in the surrounding area. The Property will help deer and other wildlife migrations by providing a clear migration corridor to allow for free movement. According to CDFW biologists, the average migration within the Herd is 26 miles, but some individuals migrate up to 48 miles.

Goal A.4 – Invest in priority conservation projects recommended under CDFW's land acquisition evaluation process or within other conservation plans supported by CDFW.

The Property is an inholding within the greater Hallelujah Junction Wildlife Area and was deemed an important priority by CDFW's Region 2, which currently manages the wildlife area.

MANAGEMENT OBJECTIVES AND NEEDS

CDFW will manage and monitor the Property. The management objectives will be the same as the rest of the Hallelujah Junction Wildlife Area and will include maintaining the Property as critical deer winter range, conducting wildlife surveys, and coordinating population surveys.

TERMS

The Property has been appraised as having a fair market value of \$92,000.00. The appraisal has been reviewed by WCB staff and reviewed and approved by the Department of General Services (DGS). The property owner has agreed to sell the Property for \$92,000.00. WCB staff must review and approve all title documents, preliminary title reports, documents for purchase and sale, escrow instructions, and instruments of conveyance prior to disbursement of funds directly into the escrow account established for

the acquisition. Once approved by the Board, the transaction will be exempt from DGS transaction review.

PROJECT FUNDING

The proposed funding breakdown for the project is as follows:

Wildlife Conservation Board	\$92,000.00
Total Purchase Price	\$92,000.00
<i>Total WCB Allocation</i>	<i>\$92,000.00</i>

WCB FUNDING SOURCE

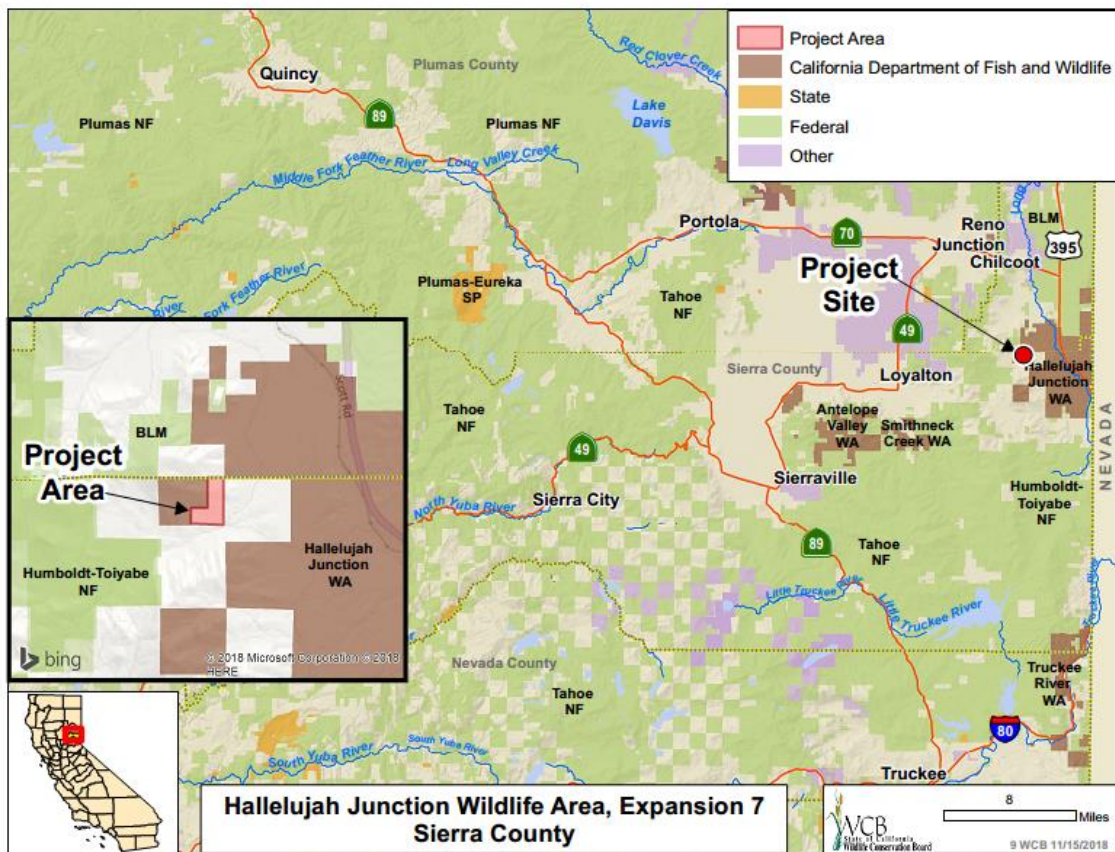
The purposes of this project are consistent with the authorized uses of the proposed funding source, the Habitat Conservation Fund (Proposition 117), Fish and Game Code Section 2786(a), which allows for the acquisition and protection of deer and mountain lion habitat.

ENVIRONMENTAL COMPLIANCE AND STATE RECOMMENDATION

The project has been reviewed for compliance with the California Environmental Quality Act (CEQA) requirements and is proposed as exempt under the State CEQA Guidelines (California Code of Regulations, Title 14, Chapter 3) Section 15313, Class 13, as an acquisition of land for wildlife conservation purposes, and Section 15325, Class 25, as a transfer of an ownership interest in land to preserve open space and existing natural conditions, including plant or animal habitats. Subject to authorization by the WCB, a Notice of Exemption will be filed with the State Clearinghouse. CDFW has reviewed this proposal and recommends it for approval.

STAFF RECOMMENDATION

Staff recommends that the Wildlife Conservation Board approve this project as proposed; allocate \$92,000.00 from the Habitat Conservation Fund (Proposition 117), Fish and Game Code Section 2786(a); authorize staff to enter into appropriate agreements necessary to accomplish this project; and authorize staff and the California Department of Fish and Wildlife to proceed substantially as planned.



[Back to Top](#)

***10. Jamul Creek Watershed Riparian Restoration, Augmentation
San Diego County
\$375,000.00**

This proposal is to consider the allocation for an augmentation to an existing grant to River Partners to restore 36 additional acres of riparian and coastal sage scrub habitat at the Hollenbeck Canyon Wildlife Area (HCWA) in San Diego County.

LOCATION

The HCWA is located on both sides of Highway 94, approximately three miles southeast of Jamul in southern San Diego County. The property was once part of the 11,000± acre Otay Ranch, which supported cattle grazing and dryland farming from the time of Spanish colonization through the late 1990s. Calcium limestone deposits on the property were historically used by the native Kumeyaay people and later by Franciscan missionaries to whitewash their adobe buildings. When a development boom began in San Diego in the late 1880s, a lime burning kiln and cement plant were constructed on the site, but were abandoned by 1906 when higher quality limestone was located nearby.

Beginning in 1998, the Wildlife Conservation Board (WCB) and other conservation organizations and agencies began acquiring portions of the Otay Ranch for conservation purposes. To date, 9,891± acres of land have been protected by WCB and are managed by the California Department of Fish and Wildlife (CDFW) as the HCWA and the Rancho Jamul Ecological Reserve (RJER). The RJER and HCWA are surrounded by a mix of privately-owned ranches and public lands. They are also an important component of the San Diego Multiple Species Conservation Plan, which includes the U.S. Bureau of Land Management's Otay Mountain Wilderness, the U.S. Fish and Wildlife Service's San Diego-Sweetwater National Wildlife Refuge, San Diego County lands, and the Cleveland National Forest.

PROJECT DESCRIPTION

In 2012, River Partners entered into a grant agreement with WCB to restore and enhance native habitat on 178 acres within the RJER and HCWA. The site was planted with two native vegetative communities including Southern Coast Live Oak Riparian Woodland and Coastal Sage Scrub. The planting design was focused on the habitat requirements of target wildlife species, which include the least Bell's vireo, California gnatcatcher, and other resident and migratory bird species.

As part of the project design, River Partners used a "pod" configuration on 30 acres of Coastal Sage Scrub (CSS) and 30 acres of Southern Coast Live Oak Riparian (SCLOR) in the HCWA site. This method installs groups of plants at a density of 3 pods/acre with unplanted spaces between pods. This practice is recognized and commonly used in the restoration community; however, the pod design has proven to be less successful at this site due to intense weed pressure from non-native invasive plant species including Bermuda grass, annual grasses, and castor bean.

Without additional restoration, the spaces between the pods (approximately 16 acres of SCLOR and 20 acres of CSS) will be left with little natural vegetation recruitment due to weed competition. In order to effectively restore these areas and realize the habitat and wildlife potential of the site, River Partners and CDFW land managers propose to complete active restoration on the 36 acres of unplanted area between the pods.

WCB PROGRAM

The proposed project will be funded through the California Riparian Habitat Conservation Program and meets the program's goal of increasing riparian habitat across California by implementing riparian habitat restoration and enhancement projects.

STRATEGIC PLAN GOALS

The project furthers the following goals outlined in the WCB Strategic Plan:

Goal B.1 – Invest in projects and landscape areas that help provide resilience in the face of climate change, enhance water resources for fish and wildlife and enhance habitats on working lands:

- The restoration of native habitats increases the overall resiliency of ecosystems and dependent animals and plants to the damaging effects of climate change.
- The restoration of the riparian corridor will enhance wildlife access to the aquatic resources of Dulzura and Jamul creeks.

In addition, the proposed project addresses the following priorities outlined in the WCB Strategic Plan:

Improve habitat for threatened or endangered species:

- Once restored, the project site will provide habitat for a number of listed species including the least Bell's vireo, California gnatcatcher, and several other plant and animal species.

MANAGEMENT OBJECTIVES AND NEEDS

CDFW owns and manages both the RJER and the HCWA. The Land Management Plans for the two properties provide for public use within the larger conservation and restoration goals. Public uses include environmental education and research, horseback riding, birding, hiking, and special hunts for upland game. Species focused for conservation include coast horned-lizard, Quino checkerspot butterfly, Otay tarplant, and San Diego thornmint. Controlled burns are part of the management strategy to increase burn frequency, decrease fuel load and fire intensity, and promote recruitment of native plant species. Control of non-native invasive weeds is an important part of these conservation efforts—native riparian vegetation is more resistant to fire than exotics. The proposed project will create a more resilient riparian habitat, which will resist future invasions of exotic vegetation, and will make the management of the property easier and more effective.

If at any time during the 25-year life of the project, River Partners does not manage and maintain the project improvements, the Grant Agreement requires that it refund to the State of California an amortized amount of funds based on the number of years left on the project life.

PROJECT FUNDING

The proposed funding breakdown for the project is as follows:

Task	WCB Augmentation	WCB Original Grant	Original Matching Funds*	Total
Project Development			\$60,185	\$60,185
Management	\$30,200	\$184,000		\$214,200
Planning		\$42,700		\$42,700
Field Preparation	\$14,470	\$111,400		\$125,870
Irrigation Installation	\$32,120	\$136,300		\$168,420
Planting	\$95,000	\$271,400		\$366,400
Plant Establishment	\$137,769	\$588,300		\$726,069
Monitoring	\$31,350	\$189,500		\$220,850
Administration	\$34,091	\$152,400	\$76,159	\$262,650
RHJV Coordination		\$20,000		\$20,000
Total	\$375,000	\$1,696,000	\$136,344	\$2,207,344

** Includes \$76,159 from SANDAG towards Administration, \$10,200 in-kind contribution from River Partners, \$25,000 in-kind contribution from the San Diego City Water Department, and \$24,985 from the Resources Legacy Fund*

The augmented funds will go towards installing native species and maintaining the new plants until they become established. Project funds will also be used to prepare the site for the plantings, installation of irrigation line, and biological monitoring of the site during construction activities.

FUNDING SOURCE

The proposed funding sources for this project are the Habitat Conservation Fund (Proposition 117), Fish and Game Code Section 2786 (e/f), which allows for the acquisition, restoration or enhancement of riparian habitat, and the Habitat Conservation Fund (Proposition 117), Fish and Game Code Section 2786(e/f) (Proposition 1E) which allows for the protection or enhancement of a flood protection corridor or bypass, and are consistent with the purposes of this project.

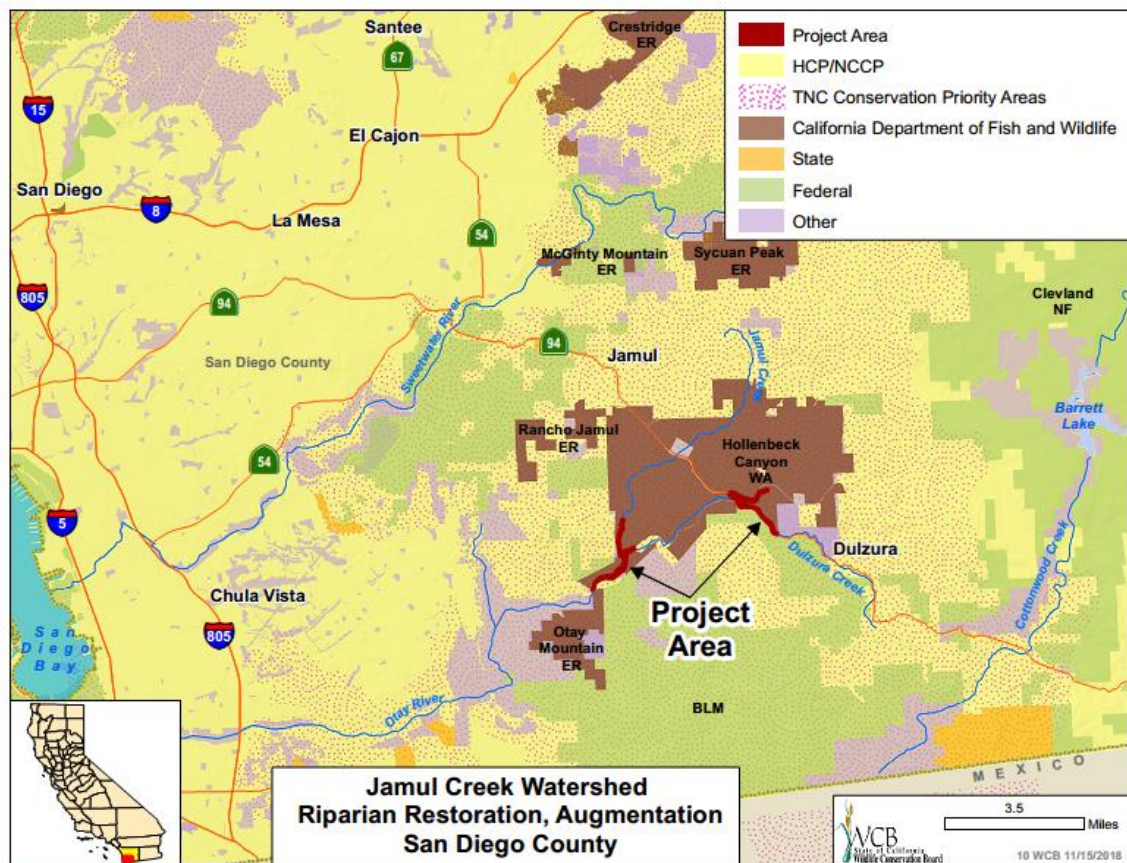
CEQA AND CDFW REVIEW/ RECOMMENDATION

The CDFW has reviewed this proposal and recommends it for funding by the WCB. The project is categorically exempt from the California Environmental Quality Act (CEQA) pursuant to the State CEQA Guidelines (California Code of Regulations, Title 14, Chapter 3, Section 15304, Class 4, as a minor alteration to land, water and/or vegetation which does not involve the removal of healthy, mature, scenic trees. Subject to approval of this proposal by the WCB, the appropriate Notice of Exemption will be filed with the State Clearinghouse.

STAFF RECOMMENDATION

Staff recommends that the Wildlife Conservation Board approve this project as proposed; allocate \$375,000.00 from the Habitat Conservation Fund (Proposition 117), Fish and Game Code Section 2786(e/f), and Habitat Conservation Fund (Proposition 117), Fish and

Game Code Section 2786(e/f) (Proposition 1E) for the grant; authorize staff and the California Department of Fish and Wildlife to enter into appropriate agreements necessary to accomplish this project; and authorize staff and the California Department of Fish and Wildlife to proceed substantially as planned.



[Back to Top](#)

***11. Morongo Basin, Expansion 4**
San Bernardino County
\$96,000.00

This proposal is to consider the allocation for a grant to the Mojave Desert Land Trust (MDLT) to acquire 320± acres of land for the protection of desert habitat corridors in the Morongo Basin.

LOCATION AND SURROUNDING USES

The subject property (Property) is located within the Morongo Basin. The Property is located north of the Joshua Tree city limits, and is on the north side of Winters Road. Commercial development is common along State Route 62, with a number of rural residential subdivisions radiating out from the communities of Yucca Valley and Joshua Tree. These developed areas give way to large open desert habitat parcels heading south and north of State Route 62.

The Property is located in the Morongo Basin Linkages Conceptual Area Protection Plan (CAPP). The CAPP identified an urgent need to protect 10,000± acres of habitat corridors between federal, state, and locally owned Morongo Basin open spaces.

The Morongo Basin is a high desert region within the southeast portion of the Mojave Desert with relatively flat to rolling hill terrain. This desert region is known mainly for the Joshua tree that dominates most of the open space desert habitat areas. The state and federally threatened desert tortoise can also be found in this area, and is the focal point of many of the desert conservation efforts that take place in the region. To the south is the Joshua Tree National Park and to the north is the Marine Corp Air Ground Combat Center at Twentynine Palms, both are large, landscape-level open space and ecosystems. The acquisition will help preserve the Joshua Tree North Linkage that is a linkage to the larger portion of the Joshua Tree-Twentynine Palms habitat linkage connection. The linkage occurs within an ecological transition zone between the Mojave and Sonoran (Colorado) desert eco-regions and connects the Joshua Tree National Park and the Marine Corps Air Ground Combat Center at Twentynine Palms.

PROJECT DESCRIPTION

The Property is vacant and contains a gently sloping drainage throughout. The Property is zoned for residential uses. Acquisition of the Property will help maintain connectivity within the CAPP area and protect view-sheds associated with Joshua Tree National Park and the Marine Corp Air Ground Combat Center at Twentynine Palms, the two main economic drivers in the region. It also provides public access and educational opportunities through outreach to the Morongo Basin's 68,000 residents and to the Morongo Basin Unified School District's 9,500 students. With a growing human population in the Morongo Basin, acquisition of the Property is uniquely equipped to offer open space and outdoor activities to the area's youth and adults alike.

Acquisition of the Property will preserve existing habitat and potential habitat for listed and special status species including the state and federally listed desert tortoise; fully protected golden eagle; and species of special concern American badger, northern harrier hawk, loggerhead shrike, Le Conte's thrasher, and prairie falcon. The Property also contains rare and protected native plant species that include Joshua trees and Mojave Yucca.

WCB PROGRAM

The proposed grant for this acquisition is being made under the Wildlife Conservation Board's (WCB) Land Acquisition Program. The Land Acquisition Program is administered pursuant to the Board's original enabling legislation, "The Wildlife Conservation Law of

1947" (Fish and Game Code Section 1300, et seq.) authorizing the WCB to acquire real property or rights in real property on behalf of the California Department of Fish and Wildlife (CDFW), grant funds to other governmental entities or nonprofit organizations to acquire real property or rights in real property, and accept federal grant funds to facilitate acquisitions, or sub-grant these federal funds to assist with the acquisitions of properties.

Under the program, WCB provides funds to facilitate the acquisition of lands and interests in land that can successfully sustain or be restored to support wildlife and, when practicable, provide for suitable wildlife-oriented recreation opportunities. These activities are carried out in conjunction with CDFW, which evaluates the biological values of property through development of a Land Acquisition Evaluation (LAE)/Conceptual Area Protection Plan (CAPP). The LAE/CAPP is then submitted to CDFW's Director for review and, if approved, later transmitted to the WCB with a recommendation to fund.

STRATEGIC PLAN GOALS

This project is guided by the WCB Strategic Plan and supports the following outlined goals:

Goal A.4 – Invest in priority conservation projects recommended under CDFW's land acquisition evaluation process or within other conservation plans supported by CDFW.

The strong partnership between the WCB, CDFW, MDLT, the Bureau of Land Management (BLM), the National Park Service (NPS), the Department of Defense, and others has allowed for the establishment of the Morongo Basin Linkages CAPP. The CAPP was approved by CDFW on December 1, 2016, and has allowed multiple agencies and land trusts to leverage available dollars and target specific lands deemed important wildlife corridors between Joshua Tree National Park, the Marine Corps Air Ground Combat Center at Twentynine Palms, and various BLM and MDLT owned lands.

Goal C.1 – Support a wide range of recreational activities (e.g. hunting, fishing, birding, hiking, camping, photography, etc.) in conjunction with other land uses and without degrading environmental resources.

The MDLT lands are open to the public for hiking, bird watching, and wildlife viewing. MDLT provides education/outreach experiences, and volunteer opportunities to all ages. Many lands owned by MDLT border publicly accessible areas and are often managed for public access to adjacent NPS lands or BLM lands.

Goal C.4 – Place greater emphasis on projects that accommodate compatible wildlife-oriented public uses, while supporting urban areas and disadvantaged communities.

The human population in the Yucca Valley is growing and sprawl has been moving into more traditional Morongo Basin desert areas. MDLT has successfully integrated its plan and mission into communities of Yucca Valley and Joshua Tree. MDLT receives strong local support and gives back with protected properties open to the public, thus supporting the urban area.

MANAGEMENT OBJECTIVES AND NEEDS

The Property will be managed and owned by MDLT. MDLT has acquired more than 900 properties in five and half years. All of these lands are being managed and/or conveyed in accordance with the Land Trust Alliance Standards and Practices. In addition, MDLT plans to develop an educational program with the Morongo Unified School District for students,

MDLT's 1,300 members, and the local communities to utilize the land for learning about desert ecosystems, wildlife, watersheds, and species.

TERMS

The Property has been appraised as having a combined fair market value of \$160,000.00. The appraisal has been reviewed by WCB staff and reviewed and approved by the Department of General Services (DGS). The Houssels family has agreed to sell the Property for \$160,000.00. The terms and conditions of the grant between WCB and MDLT provide that WCB staff will review and approve all title documents, appraisals, preliminary title reports, documents for purchase and sale, escrow instructions and instruments of conveyance prior to disbursement of funds directly into the escrow account established for the acquisition. In the event of a breach of the grant terms, WCB can require the grantee to encumber the Property with a conservation easement in favor of the State or another entity approved by the State and seek reimbursement of funds.

PROJECT FUNDING

The proposed funding breakdown for the project is as follows:

Wildlife Conservation Board	\$96,000.00
Mojave Desert Land Trust	\$64,000.00
Total Purchase Price	\$160,000.00
<i>Total WCB Allocation</i>	<i>\$96,000.00</i>

FUNDING SOURCE

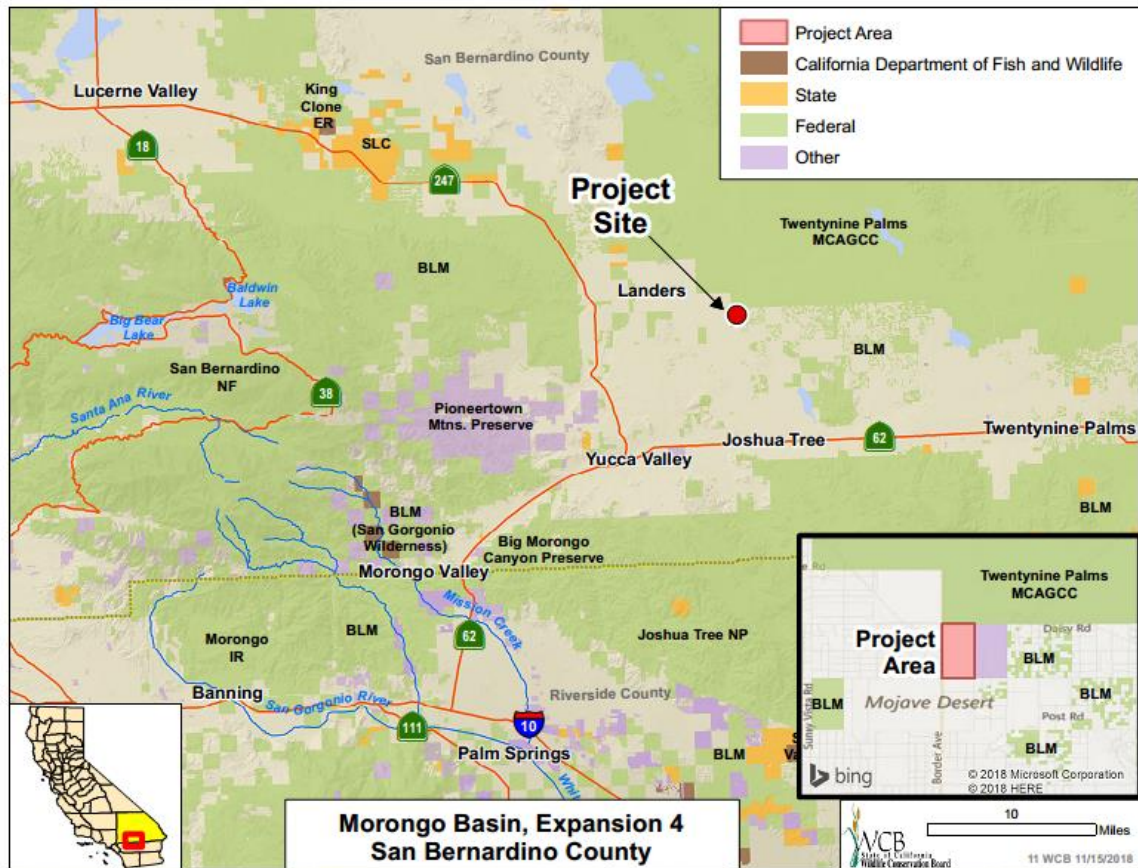
The purposes of this project are consistent with the proposed funding source, the Habitat Conservation Fund (Proposition 117), Fish and Game Code Section 2786(b/c), that allows for the acquisition of habitat to protect rare, endangered, threatened or fully protected species.

ENVIRONMENTAL COMPLIANCE

The acquisition has been reviewed for compliance with the California Environmental Quality Act (CEQA) requirements and is proposed as exempt under CEQA Guidelines (California Code of Regulations, Title 14, Chapter 3) Section 15313, Class 13, as an acquisition of land for wildlife conservation purposes, and Section 15325, Class 25, as a transfer of an ownership interest in land to preserve open space and existing natural conditions, including plant or animal habitats. Subject to authorization by the WCB, a Notice of Exemption will be filed with the State Clearinghouse. CDFW has reviewed this proposal and recommends it for approval.

STAFF RECOMMENDATION

Staff recommends that the Wildlife Conservation Board approve this project as proposed; allocate \$96,000.00 from the Habitat Conservation Fund (Proposition 117), Fish and Game Code Section 2786(b/c), for the grant, authorize staff to enter into appropriate agreements necessary to accomplish this project; and authorize staff and the California Department of Fish and Wildlife to proceed substantially as planned.



[Back to Top](#)

**12. Humboldt State University/Arcata Jacoby Creek
Forest - Expansion
Humboldt County
\$1,725,000.00**

This proposal is to consider the allocation for a grant to the City of Arcata (City) and Humboldt State University (HSU) to acquire 967± acres of timberland within the Jacoby Creek watershed and the acceptance of a conservation easement by the California Department of Forestry and Fire Protection (CALFIRE) for a cooperative project with CALFIRE, the California Department of Fish and Wildlife (CDFW) the California Natural Resources Agency (CNRA) and the United States Fish and Wildlife Service (USFWS) for protection of threatened and endangered species, working forest lands, forest reserve areas, watersheds, fisheries and habitat linkages. The conservation easement is being conveyed as a condition of the CALFIRE grant and will protect significant scenic, recreational, timber, riparian, fish and wildlife, cultural, carbon sequestration, and environmental values.

LOCATION AND SURROUNDING USES

The subject property (Property) is located south of Fickle Hill Road in an unincorporated area of Humboldt County, about nine miles southeast of downtown Arcata and adjacent to the City's 1,306± acre Jacoby Creek Community Forest. North of the Property are City-owned timberlands and private timberland holdings. There are smaller private rural residential landowners on the west and south sides of the Property with larger private timberland holdings to the east.

PROJECT DESCRIPTION

The Property consists of 10 contiguous assessor's parcels of timberland which encompass a significant portion of Jacoby Creek (Creek). The eastern and northeastern portions of the Property have more gentle topography, whereas the southern and western portions of the Property are generally steeper. The Property elevation ranges from 960 feet to 2,080 feet. This acquisition will enable the Property to be managed sustainably for timber production while allowing for limited public access.

The primary purpose of this proposed acquisition is to protect and maintain the health of redwood, western hemlock, grand fir, Douglas fir, and western red cedar habitat and for protection of threatened and endangered species. Approximately 7,920± lineal feet of the upper reaches of the Creek are located on the Property. The Property is an integral part of the Jacoby Creek watershed and in large part contributes to the Humboldt Bay ecosystem that provides an adequate water supply to maintain habitat for fish, waterfowl, wading birds, shorebirds and other water associated wildlife. Acquisition of the Property located at the headwaters of the Jacoby Creek watershed will allow for a complete watershed to bay habitat and conservation project that includes the existing Jacoby Creek Community Forest lands, fee and conservation easements held by the Jacoby Creek Land Trust, the Jacoby Creek/Gannon Slough Wildlife Area and Humboldt Bay National Wildlife Refuge.

Most of the middle and upper reaches of the Creek have traditionally been used for timber production. The Property consists primarily of second growth with a few small stands of old growth western red cedar timber still remaining. The lower portion of the Creek west of the Property was originally part of Humboldt Bay's extensive intertidal salt marsh and mud flats prior to the construction of the Northwestern Railroad line adjacent to the bay and State Highway 101. Construction of these facilities, timber harvest in the upper watershed, and conversion of the riparian areas to agricultural uses in the lower watershed have negatively impacted the Creek. There are a number of listed and sensitive species that should benefit from this acquisition, including the northern red-legged frog, the foothill

yellow-legged frog, northern spotted owl, Coopers hawk, osprey, yellow warbler, sharp shinned hawk, Pacific fisher, white footed vole, and red tree vole. Additionally coastal cutthroat trout, coho salmon, steelhead, and the tidewater goby would all benefit from this acquisition.

Acquisition of the Property would also provide the California State University system a forest area which will become a significant research and educational facility that will provide statewide benefits. Future public management of the Property with the proposed research and educational opportunities will optimize and provide guidance for forest management statewide on issues such as carbon sequestration, protection of spotted owl activity centers, protection of springs and wet soils, the importance of maintaining old growth individual trees, rocky outcrops, talus slopes, and other identified special habitat features. The Property will provide opportunities to demonstrate best management practices on "working forest land."

WCB AND CALFIRE PROGRAMS

The proposed grant is being considered under WCB's Land Acquisition Program. The Land Acquisition Program is administered pursuant to the Board's original enabling legislation, "The Wildlife Conservation Law of 1947" (Fish and Game Section 1300, *et seq.*) authorizing WCB to acquire real property or rights in real property on behalf of the CDFW, grant funds to other governmental entities or nonprofit organizations to acquire real property or rights in real property and accept federal grant funds to facilitate acquisitions or subgrant these federal funds to assist with acquisitions of properties. Under the program, WCB provides funds to facilitate the acquisition of lands and interests in land that can successfully sustain or be restored to support wildlife and, when practicable, provide for suitable wildlife-oriented recreation opportunities. These activities are carried out in conjunction with the CDFW, which evaluates the biological values of property through development of a Land Acquisition Evaluation (LAE)/Conceptual Area Protection Plan (CAPP). The LAE/CAPP is then submitted to CDFW's Regional Operations Committee (ROC) for review and, if approved, later transmitted to the WCB with a recommendation to fund.

The proposed acquisition of the conservation easement by CALFIRE is being considered under the California Forest Legacy Program Act (CFLPA). CFLPA (Public Resources Code section 12200, *et seq.*) allows CALFIRE to accept lands and interests in lands to protect environmentally important forestlands that are threatened by present or future conversion to non-forest uses. Priority is to be given to lands that can be effectively protected and managed and that have important scenic, recreational, timber, riparian, fish and wildlife, threatened and endangered species, and other cultural and environmental values. Under CFLPA, WCB may acquire conservation easements on behalf of CALFIRE (Public Resources Code section 12240).

Proposals under CFLPA are evaluated and recommended for funding by CALFIRE staff based on criteria established under the California Forest Legacy Program Act of 2007. Eligible properties may be working forests where forest land is managed for the production of forest products and traditional forest uses are maintained. These forest uses include both commodity outputs and non-commodity values. The purpose of the easement is to maintain the forest intact and to provide such traditional forest benefits as timber production, wildlife habitat, watershed protection, and increased carbon sequestration through increased growth and inventory and long-term management of the timberlands.

STRATEGIC PLAN GOALS

This project is guided by the WCB Strategic Plan and supports the following Strategic Plan goals:

Goal A.1 – Fund projects and landscapes that provide resilience for native wildlife and plant species in the face of climate change.

The Property preserves existing forest and riparian habitat and wildlife linkages by expanding a network of protected lands. Habitat connectivity is essential in maintaining the genetic viability of the region's listed/sensitive species. By protecting wildlife corridors and reducing development in the area, the species will have the potential to adapt to any climate change impacts.

Goal A.4 – Invest in priority conservation projects recommended under CDFW's land acquisition evaluation process or within other conservation plans supported by CDFW.

CDFW has recommended the acquisition of the Property as part of the Jacoby Creek Conceptual Area Protection Plan (CAPP). The Property is also located in the Arcata Planning Area as defined by the Arcata General Plan 2020.

Goal E.1 – Maximize expenditure of remaining bond funds and identify opportunities to leverage existing funds as effectively as possible.

The proposed WCB grant to the City and HSU to assist with the acquisition of the Property would be used along with CALFIRE, CNRA, CDFW, and USFWS grants.

MANAGEMENT OBJECTIVES AND NEEDS

The City and HSU are seeking to acquire the Property to protect its species, natural resources, and allow for management of a public working forest. A portion of the timberland would be owned by the City and a portion owned by HSU with the goal of separate ownership and cooperative management. Approximately 83 acres will be added to the City's Jacoby Creek Community Forest and 884 acres will establish the HSU forest. The City and HSU will manage the Property as part of the larger sustainable working forest as a research and educational asset thus maintaining both the ecological integrity and economic stability of the Property.

The ongoing and committed funding stream from the City's forestry program ensures proper oversight (including ranger patrol) and sustainable management of the Property, including restoration and erosion control projects as needed. This model has worked successfully for the City for the past 30 years.

CALFIRE will enter into the easement with the City and monitor the Property for compliance with the terms of the easement. The easement allows access by CALFIRE or its agents annually for monitoring purposes.

TERMS

The property owner has agreed to sell the Property to the City for \$4,540,000.00, significantly less than the \$6,245,000.00 appraised fair market value as approved by the Department of General Services (DGS). DGS reviewed the appraisal as well as the review provided by a registered professional forester of the timber valuation. Under terms of the grant, WCB staff is responsible for review of all acquisition-related documents prior to disbursement of grant funds. In the event of a breach of the grant terms, WCB can require

grantees to encumber the Property with a conservation easement in favor of the State or another entity approved by the State and seek reimbursement of funds.

PROJECT FUNDING

The proposed funding breakdown for the project is as follows:

Wildlife Conservation Board	\$1,725,000.00
CDFW	\$1,754,000.00
CALFIRE	\$ 800,000.00
CNRA (EEMP)	\$ 226,000.00
USFWS (NAWCA)	\$ 35,000.00
Total Purchase Price	\$4,540,000.00
<i>Total WCB Allocation</i>	<i>\$1,725,000.00</i>

FUNDING SOURCE

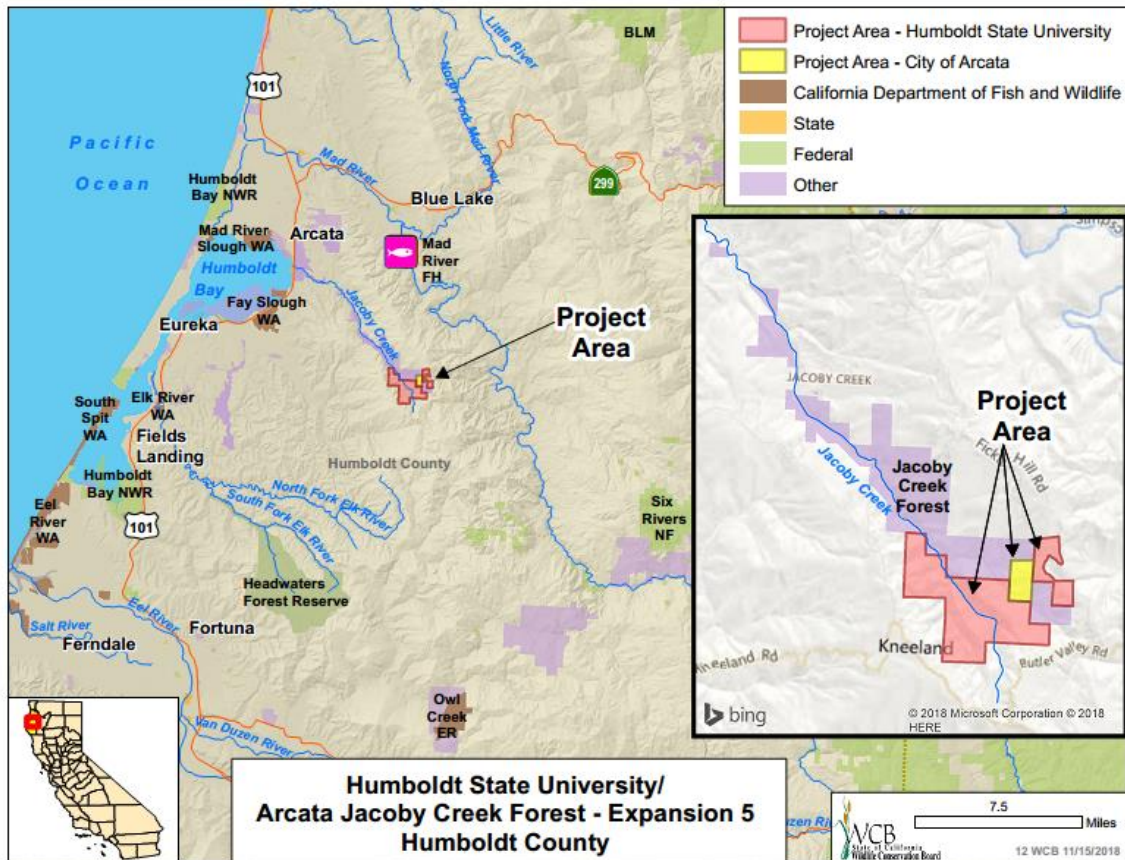
The purposes of this project are consistent with the proposed funding source, Safe Drinking Water, Water Quality and Supply, Flood Control, River and Coastal Protection Fund of 2006 (Proposition 84), Public Resources Code Section 75055(b) which allows for the acquisition of corridors linking separate habitat areas to prevent habitat fragmentation, and to protect significant natural landscapes and ecosystems and other significant habitat areas.

ENVIRONMENTAL COMPLIANCE AND STATE RECOMMENDATION

The project has been reviewed pursuant to the California Environmental Quality Act (CEQA) and is proposed as exempt under the State CEQA Guidelines (California Code of Regulations, Title 14, Chapter 3) Section 15313, Class 13, as an acquisition of land for fish and wildlife conservation purposes, and Section 15325, Class 25, as a transfer of an ownership interest in land to preserve open space and existing natural conditions, including plant or animal habitats. Subject to authorization by the WCB, a Notice of Exemption will be filed with the State Clearinghouse. The CDFW has reviewed this proposal and recommends it for approval.

STAFF RECOMMENDATION

Staff recommends that the Wildlife Conservation Board approve this project as proposed, allocate \$1,725,000.00 from the Safe Drinking Water, Water Quality and Supply, Flood Control, River and Coastal Protection Fund of 2006 (Proposition 84), Public Resources Code Section 75055(b) for the grant, authorize staff to enter into appropriate agreements necessary to accomplish this project, and authorize staff and the California Department of Fish and Wildlife to proceed substantially as planned.



[Back to Top](#)

**13. Lower American River Parkway Natural Resources Management Plan
Sacramento County
\$500,000.00**

This proposal is to consider the allocation for a grant to Sacramento County Regional Parks (Regional Parks) for the development of a Natural Resources Management Plan for the Lower American River in Sacramento County.

LOCATION

The American River Parkway (Parkway) is an open space greenbelt that extends approximately 29 miles from Folsom Dam at the northeast to the American River's confluence with the Sacramento River at the southwest. It lies immediately next to and within the City of Sacramento, City of Rancho Cordova, and the unincorporated area of Sacramento County. The Parkway is defined as the area from Hazel Avenue downstream to its confluence with the Sacramento River, and encompasses 5,000± acres on both sides of the river. It includes a complex modified landscape shaped by hydraulic and dredge gold mining in the 1800s, and by dam and levee construction in the 1900s.

Having a drainage area of 120± square miles, the lower American River (LAR) is characterized by managed river flow, associated riparian vegetation, side channels and ponds. The floodplain of the LAR is bordered by high bluffs in its upper reaches, and by levees in its lower reaches. The river provides habitat for anadromous fisheries, migratory birds, and other wildlife. Sensitive species found in the area include Swainson's hawk, peregrine falcon, northern harrier, white-tailed kite, and western pond turtles. Additional benefits of the area include flood control. The Parkway is considered a regional jewel and provides numerous recreating opportunities including cycling, hiking, fishing, swimming, rafting, horse riding, picnicking, and bird watching, and offers commercial, scientific and education uses and benefits.

PROJECT DESCRIPTION

The Lower American River Conservancy Program (Program) was created in 2016 with passage of Assembly Bill (AB) 1716 to provide a state partner to work cooperatively with local agencies, particularly the County of Sacramento in its role as the Parkway Manager, and nonprofit organizations to help fund projects and provide grants to restore, enhance, interpret, protect and improve public access to the American River Parkway's natural, recreational, educational, and cultural resources. AB 1716 calls for the Wildlife Conservation Board (WCB), in administering the Program, to prioritize expending funds to develop and implement a natural resources management plan as well as to improve access, protection, and restoration on the Parkway.

The purpose of this project is to develop a natural resources management plan for the LAR. The current guiding document for the LAR is the American River Parkway Plan (Parkway Plan) (County of Sacramento, 2008). This plan is a general policy document that identifies land use designations and area plans, and broadly describes the resources within the Parkway. WCB previously funded implementation of the 1997 American River Parkway Invasive Plant Management Plan, Phases I and II. The work of these previous projects will influence sections of the natural resources management plan that focus on existing conditions, desired future conditions, and management of invasive plants within the LAR.

The Lower American River Natural Resources Management Plan (NRMP) is a Sacramento County-initiated process which addresses the Regional Parks' jurisdictional resource management responsibilities on the Parkway and will be aligned with the goals

and policies of the Parkway Plan. The purpose of the NRMP is to develop resource information and Parkway resource management objectives to be used by Regional Parks in its management of the Parkway. The NRMP's management factors will consider each of the following categories: fire prevention, habitats, trails and recreation, and public safety.

The NRMP actions, recommendations, and guidelines will be based on an assessment of desired conditions, which will set the framework for balancing resource management with recreation, optimizing resource conditions and values, and defining resource management objectives for individual management units.

Site-specific resource condition standards will be developed for each Land Use Designation in each sub-unit of the Parkway, based on:

- Sub-unit specific resources and activities,
- Results of Parkway-wide desired future conditions analysis,
- Wild and Scenic River protection guidelines, and
- Species of greatest conservation need.

An additional standard for establishing minimum resource conditions will be the non-degradation obligation under the Interagency Wild and Scenic Rivers Coordinating Council guidelines for the management of 2(a)(ii) state managed federally designated Wild and Scenic Rivers. This will require:

- Determining resource conditions as of the date (1981) of LAR inclusion into the federal system,
- Determining resource condition changes, since 1981, due to natural processes outside of management control,
- Estimating future change of resource conditions due to natural processes outside of management control,
- Developing desired resource condition management objectives,
- Establishing minimum standards that reflect either:
 - 1981 conditions, or
 - Expected conditions due to changes resulting from ongoing natural processes outside of management control.
- Recommending management actions to improve degraded areas, and
- Developing strategies to maintain or enhance resource conditions.

Because the NRMP will propose actions that Sacramento County and/or regulatory agencies will need to approve for implementation, a joint Programmatic Environmental Impact Report (EIR) and Environmental Impact Statement (EIS) will be prepared. Subsequent activities in the Program will be examined in the light of the Programmatic EIR/EIS to determine whether an individual environmental document must be prepared.

WCB PROGRAM

WCB authorizes grants under the Program. AB1716 prioritizes the development and implementation of a natural resources management plan, and prioritizes improving public access, protection, and restoration of the Parkway.

The proposed project will be funded through the Program and meets the Program's goals of expending funds for the benefit of the LAR, prioritizing the development and implementation of a natural resources management plan, and to improve access to, and protection and restoration of, the Parkway.

STRATEGIC PLAN GOALS

The project furthers the following goals outlined in the WCB Strategic Plan:

Goal A.2 – Fund projects and landscape areas that conserve, protect, or enhance water resources for fish and wildlife.

- Develops goals, objectives and specific projects that will conserve, protect, or enhance resources for fish and wildlife.

Goal B.1 – Invest in projects and landscape areas that help provide resilience in the face of climate change, enhance water resources for fish and wildlife, and enhance habitat on working lands.

- Leads to an adopted plan and strategies that conserve water resources and aquatic, wetland, and riparian habitats; develops resource management objectives that provide resilience to climate change.
- Enhances water resources and riparian corridors for fish and wildlife by establishing resource goals and objectives, and by identifying appropriate individual projects for implementation
- Uses the best available science by compiling existing data and conducting field reconnaissance on existing datasets.

Goal C.1 – Support a wide range of recreation activities in conjunction with other land uses and without degrading environmental resources.

- Evaluate current uses within the Parkway and potential impacts to natural resources while still supporting a diversity of appropriate outdoor recreation activities in the Parkway.

MANAGEMENT OBJECTIVES AND NEEDS

Regional Parks will continue its historical role as the Parkway manager. The NRMP will address Regional Parks' jurisdictional resource management responsibilities of the Parkway, be aligned with the goals and policies of the Parkway Plan, and guide management practices within the LAR. A programmatic EIR/EIS will also be developed for the NRMP, which is expected to simplify environmental review for individual implementation projects within the Parkway. Future projects developed will be consistent with the NRMP. Regional Parks will work with partners to implement resource management projects and public access projects within the Parkway, and will verify consistency of proposed projects with the Parkway Plan.

Long-term management of the LAR Parkway will follow an adaptive management process to fulfill the goals and objectives of the Parkway's resources.

PROJECT FUNDING

The proposed funding breakdown for the project is as follows:

Task #	Task	WCB	Regional Parks	Total Cost
1	Project Management	\$10,473	\$96,955	\$107,428
2	Data Collection, Data Management and GIS	\$26,439	\$17,473	\$43,912
3	Public Outreach	\$4,954	\$14,862	\$19,816
4	NRMP	\$179,938	\$175,876	\$355,814
5	PEIR/EIS	\$278,196	\$28,274	\$306,470
TOTAL		\$500,000	\$333,440	\$833,440

Project costs will be for project management, data management and the development of a Geographic Information System, public outreach, NRMP preparation, and a programmatic EIR/EIS.

FUNDING SOURCE

The purposes of this project are consistent with the authorized uses of the proposed funding source, which allows expenditures to be made available to the Program pursuant to the Lower American River Conservancy Program Act (Public Resources Code Section 5845 et seq.). [General Fund, Budget Act, Chapter 14, Statutes of 2017].

CEQA AND CDFW REVIEW/RECOMMENDATION

The CDFW has reviewed this proposal and recommends it for funding by the WCB. WCB staff will present this project to the Lower American River Conservancy Advisory Committee at its November meeting to request a vote of support for this expenditure.

The project has been reviewed for compliance with the California Environmental Quality Act (CEQA) requirements and is statutorily exempt from CEQA pursuant to the State CEQA Guidelines California Code of Regulations, Title 14, Chapter 3, Section 15262, as it involves only feasibility and planning studies for possible future actions. Subject to approval of this proposal by WCB, the appropriate Notice of Exemption will be filed with the State Clearinghouse.

STAFF RECOMMENDATION

Staff recommends that the Wildlife Conservation Board approve this project as proposed, allocate \$500,000.00 from the General Fund for the grant, authorize staff to enter into appropriate agreements necessary to accomplish this project, and authorize staff and the California Department of Fish and Wildlife to proceed substantially as planned.



[Back to Top](#)

**14. Contra Loma Regional Park Fishing Access
Contra Costa County
\$250,000.00**

This proposal is to consider the allocation for a grant to the East Bay Regional Park District (EBRPD) for a cooperative project with the Bureau of Reclamation to replace the fishing dock, upgrade restrooms, and provide ADA access at the Channel Point area of Contra Loma Regional Park, located in the City of Antioch in Contra Costa County.

LOCATION

The Contra Loma Reservoir is located in Contra Loma Regional Park, a 780-acre multi use facility in Antioch that supports year-round fishing, boating, hiking, biking, and nature study. The Bureau of Reclamation owns the property, but EBRPD manages and operates the project site under a long-term lease. Over 13,000 anglers use the park annually to fish for catfish, black and striped bass, bluegill, trout, and red-eared sunfish. The Channel Point dock is one of three docks at the Contra Loma Reservoir.

PROJECT DESCRIPTION

The existing 800-square foot wooden dock at Channel Point needs to be replaced. The chemical toilets near the dock are old, unpleasant, and difficult to clean and maintain. Three of the four toilets are deteriorated wood structures. The fourth fiberglass restroom is intended to serve as the Americans with Disabilities Act (ADA) accessible unit but is not in compliance with current ADA standards. The objectives of this project are to replace the dilapidated wooden fishing dock, upgrade the restrooms, and provide ADA access at the Channel Point area of Contra Loma Regional Park.

Contra Loma Park is a regional facility that serves the open space needs of the surrounding communities of Antioch, Pittsburg, and Bay Point, all of which have areas that are identified as disadvantaged and severely disadvantaged communities. Two free fishing derbies, a low-cost weeklong day camp (with financial assistance) that includes fishing, and low-cost bus transportation are just a few of the benefits to the community. EBRPD's Park'n It Day Camp offers a Leaders in Training program at Contra Loma Regional Park for middle school age children where they receive outdoor skills training to allow them to assist younger campers with fishing and other activities. In addition to fishing, the 3-mile loop trail that rings the lake offers the community of Antioch a place for healthy recreation, and is well loved by walkers, joggers and bikers. In addition to the loop trail, trails connect to many miles of multi-use hiking trails within Contra Loma and the adjacent 6,000+ acre Black Diamond Mines Regional Preserve. Contra Loma Reservoir offers a tranquil location for bird watching, fishing, boating and enjoying nature close-to-home. In the spring, wildflowers abound.

WCB PROGRAM

The proposed project will be funded through the Public Access Program and meets the program's goal of providing public access for hunting, fishing, or other wildlife-oriented recreation statewide.

STRATEGIC PLAN GOALS

The project furthers the following goals outlined in the WCB Strategic Plan:

Goal C.1 – Support a wide range of recreational activities (e.g., hunting, fishing, birding, hiking, camping, photography, etc.) in conjunction with other land uses and without degrading environmental resources.

Contra Loma Reservoir offers a tranquil location for bird watching, fishing, boating and enjoying nature close-to-home, and every year is enjoyed by thousands of people of all ages and from all walks of life.

MANAGEMENT OBJECTIVES AND NEEDS

The EBRPD provides monitoring, operations, and maintenance to a system of parklands and trails in Alameda and Contra Costa counties east of San Francisco. The system comprises 120,000 acres in 72 parks, including over 1,250 miles of trails. EBRPD acquires, manages, and preserves natural and cultural resources for all to enjoy now and into the future. Long-term management of Contra Loma by the Bureau of Reclamation and the EBRPD is detailed in the Contra Loma Reservoir and Recreation Area 25-year Resource Management Plan. The fishing dock is encompassed in the boat launch facility and will follow the boat launch facility maintenance schedule.

TERMS

If at any time during the 25-year life of the project, the EBRPD does not manage and maintain the project improvements, the Grant Agreement requires that it refund to the State of California an amortized amount of funds based on the number of years left on the project life.

PROJECT FUNDING

The proposed funding breakdown for the project is as follows:

Project Task	Total Cost	WCB Request Cost	Non-WCB Funds
Mobilization/Demobilization/ Traffic Control	\$ 70,000	\$ 20,000	\$ 50,000
Construction	\$ 450,000	\$ 225,000	\$ 225,000
Project Management	\$ 130,000	\$ 5,000	\$ 125,000
TOTAL	\$ 650,000	\$ 250,000	\$ 400,000

Project costs will be for mobilization/demobilization, reconstruction of the fishing dock, ADA parking and path-of-travel upgrades, upgrades to the existing restroom facilities, and project management. Funding partners include the U.S. Bureau of Reclamation and EBRPD.

FUNDING SOURCE

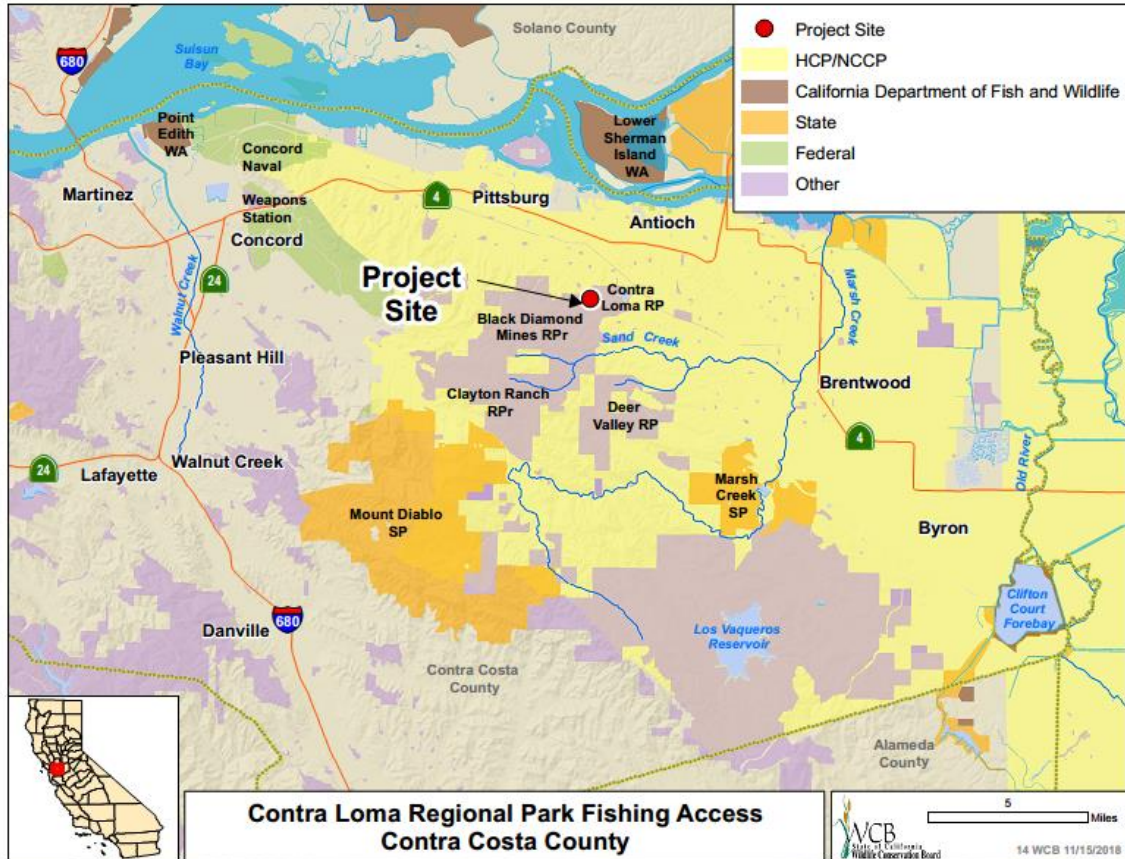
The proposed funding source for this project is the Wildlife Restoration Fund, which allows for the development of public access facilities for hunting, fishing and other wildlife compatible recreational activities and is consistent with the objectives of this project.

CEQA AND CDFW REVIEW/ RECOMMENDATION

The CDFW has reviewed this proposal and recommends it for funding by the WCB. The project is exempt from the California Environmental Quality Act (CEQA) pursuant to the State CEQA Guidelines (California Code of Regulations, Title 14, Chapter 3) Section 15301 as the maintenance or minor alteration of existing public structures and facilities, and Section 15303, construction of new small structures. Subject to Board approval of the project, staff will file the appropriate Notice of Exemption with the State Clearinghouse.

STAFF RECOMMENDATION

Staff recommends that the Wildlife Conservation Board approve this project as proposed, allocate \$250,000 from the Wildlife Restoration Fund, authorize staff to enter into appropriate agreements necessary to accomplish this project, and authorize staff and the California Department of Fish and Wildlife to proceed substantially as planned.



[Back to Top](#)

**15. Shasta Big Springs Acquisition Update
Information/Action**

Staff will provide update regarding project status.

[Back to Top](#)

16. Strategic Plan Update

Informational item regarding the update of WCB's Strategic Plan, as required by Proposition 68.

In September, WCB convened a meeting with a sub-committee of three WCB Board members: Alina Bokde, Mary Creasman, and Diane Colborn. As a result of that meeting, WCB staff will research the possibility of hiring a retired annuitant (RA) and a consultant to help with outreach and the development of the updated plan. It was clear that we need to reach out to other organizations that do not typically interact with WCB staff, and to use different methods (e.g., social media or short videos) to increase engagement. We need to make a better case as to how WCB's work is relevant to a wider audience.

As of this writing, a scope of work has been developed for the RA, and staff is close to getting a person on board. The RA will assist with developing the scope of work for a consultant to help with outreach and public input. Staff will try to meet the original timeline, which called for Board approval of the update in May 2019. That, however, may be optimistic given the extra effort it will take to expand outreach to a wider audience.

[Back to Top](#)

17. Proposition 68 Guidelines

Board will be asked to approve these guidelines.

Staff requests the approval of the WCB [Proposition 68 Guidelines \(PDF\)](#). In developing these Guidelines, WCB staff coordinated with CDFW staff to solicit input at three separate workshops. The workshops, held in Redding, Sacramento and Los Alamitos, were attended by 200 individuals. In addition, we received comments on-line from 14 separate organizations. The Guidelines have been modified and improved as a result of this input.

[Back to Top](#)

18. 2019 Board Meeting Dates

Board will be asked to approve WCB meetings dates for 2019.

Option 1

March 7, 2019

May 23, 2019

August 22, 2019

November 21, 2019

Option 2

February 27, 2019

May 22, 2019

August 28, 2019

November 27, 2019

Stream Flow Enhancement Board Meeting

April 4, 2019

Adjourn