

STAFF SUMMARY FOR DECEMBER 12-13, 2018

12. STATEWIDE MARINE PROTECTED AREAS PROGRAM**Today's Item****Information** ☒**Action** ☐

Receive annual update on DFW's marine protected areas (MPAs) program management activities.

Summary of Previous/Future Actions

- Final MPA master plan adopted Aug 24-25, 2016; Sacramento
- **Today receive annual update on management Dec 12-13, 2018; Oceanside**

Background

In 2016, the final master plan for MPAs was adopted, which formally established DFW's MPA Management Program. As the primary managing agency, DFW, along with core partners, manages California's MPAs as a statewide network using a collaborative partnership-based approach with four components: (1) Outreach and education, (2) research and monitoring, (3) enforcement and compliance, and (4) policy and permitting.

DFW's approach is essential to inform adaptive management of the MPA network and to help meet the goals of the Marine Life Protection Act. At the adoption of the final master plan for MPAs, FGC requested that DFW provide it with an annual report of program activities. DFW has prepared a written overview of actions in the past year for each of the four components (Exhibit 1). At today's meeting, DFW will present highlights from the year's MPA program management activities (Exhibit 2).

Significant Public Comments (N/A)**Recommendation (N/A)****Exhibits**

1. [DFW memo, received Nov 19, 2018](#)
2. [DFW presentation](#)

Motion/Direction (N/A)

Memorandum

2018 NOV 19 AM 10:00

Date: November 15, 2018

To: Melissa Miller-Henson
Acting Executive Director
Fish and Wildlife Commission

Game

From: Charlton H. Bonham
Director



Subject: **Marine Protected Areas Management Program Updates for 2018**

Overview:

In 2016, the California Fish and Game Commission (Commission) requested the California Department of Fish and Wildlife (Department) to prepare annual updates about the management of California's marine protected areas (MPAs). As the primary managing agency, the Department, along with core partners, developed an MPA Management Program ([Management Program](#)) to manage the MPAs as a statewide network using a collaborative partnership-based approach. The Management Program is composed of four components: 1) outreach and education, 2) research and monitoring, 3) enforcement and compliance, and 4) policy and permitting. This approach is essential to inform adaptive management of the MPA network and to help meet the goals of the Marine Life Protection Act (MLPA). This memo highlights the Department's activities in the Management Program within each of the four program components in 2018.

Outreach and Education:

Efforts continue to focus on increasing public awareness to improve compliance and understanding of California's network of MPAs.

Video, Blogs and Newsletters

- A new MPA film "[Safeguarding an Underwater Wilderness](#)" was developed and released. Our partners at public aquaria, visitor centers, chambers of commerce, ocean outreach events, and more played this video.
- The Department's Marine Management News blog series [Exploring California's Marine Protected Areas](#) continues to receive positive feedback.
 - 6 stories highlighting 10 MPAs were posted January through October 2018
- A new monthly [e-newsletter](#) provides management updates to subscribers including California stakeholders, government agencies, non-profits, international representatives, and more.

- We continue to provide current Management Program updates through our partners' newsletters such as the California's Collaborative Network quarterly [newsletter](#).
- An article on one of California's MPAs was published in the March-April issue of Outdoor California's magazine entitled, [*Crystal Cove: Exploring California's Undersea Wilderness off Orange County's Protected Wild Coast*](#).

Education

In 2018, over 15,600 students participated in the [MPA Parks Online Resources for Teachers and Students \(PORTS\) programs](#), and over 60,000 students have participated since this Department and California Department of Parks and Recreation (Parks) partnership began in 2014. The PORTS program connects resource experts in the field with students in their classrooms.

- Core-curriculum teaches students about California's MPAs. Modules include Año Nuevo State Marine Reserve (SMR), Point Lobos SMR, Crystal Cove State Marine Conservation Area (SMCA), and Pyramid Point SMCA, where students learn about elephant seals, kelp forests, tide pool ecology, and salmon lifecycle, respectively.
- Department funding ended on June 30, 2018 and was replaced by a larger OPC-funded partnership for MPA outreach between the Department, OPC and Parks.

Guidebooks and Brochures

More than 65,600 MPA outreach materials including guidebooks, brochures, posters, logo stickers, and information cards were printed and distributed. A new [poster](#) showcasing species likely to benefit from MPAs and a general [MPA brochure](#) were produced and distributed.

Signage

Department staff reviewed and approved signage development and placement statewide for 11 "You Are Here" signs, 11 "No Fishing" signs, 33 "Interpretive" signs, and four "Harbor" signs (see Attachment 1). Since 2003, our partners at the Resources Legacy Fund (RLF) and the Ocean Protection Council (OPC) have funded, and the California Marine Sanctuary Foundation has coordinated the design and placement of more than 450 informative MPA signs and panels.

Presentations

Department staff made over 25 presentations about the Management Program at various scientific and public venues, including: the California Cooperative Oceanic Fisheries Investigations annual meeting, Commission and Marine Resource Committee meetings, Reef Check California's (RCCA) annual instructor training, Aquarium of the Pacific scientific diver training, and Oregon-California MPA Forum.

Partnerships

The MPA Statewide Team (Leadership Team) and MPA Collaborative Network continue to form the foundation for the Department's partnerships in MPA

management. The Department's Director endorsed and the OPC approved the Leadership Team's Work Plan for fiscal years 2018/19-2020/21. The Work Plan ensures we maintain management momentum, address emerging needs and keep California's MPAs on track to meet the goals of the MLPA.

Our coordination with each of the 14 collaboratives in the MPA Collaborative Network facilitated development of specific coastal county resource needs including the development and installation of regulatory signs, development of maps and Department approved text for local brochures, and materials and information at outreach events.

CDFW, OPC, and the Oregon Department of Fish and Wildlife met to further develop and align criteria for long-term monitoring for program evaluations and to find opportunities for sharing resources and next steps for working together.

Research and Monitoring:

The vehicle for managing research and monitoring activities across California's MPA network is the [MPA Monitoring Program](#), implemented using a two-phased, ecosystem-based approach.

Phase 1: Regional, baseline monitoring

Baseline monitoring established a comprehensive benchmark of ecological, oceanographic, and socioeconomic conditions at or near the time of regional MPA implementation and serves as an important set of data against which future conditions can be measured. Phase 1 concluded in February 2018, with data and results for the North Coast MPAs described in technical reports for each funded project and summarized into a "[State of the Region](#)" report. This information was used to develop an initial [5-year management review](#) regarding regional MPA implementation. All Phase 1 products are available [here](#).

Phase 2: Statewide, long-term monitoring

To guide long-term monitoring, an MPA Monitoring Program Action Plan ([Action Plan](#)) was developed by the Department and OPC and adopted by the Commission and OPC in October 2018. OPC has approved \$9.4 million for long-term monitoring, and a solicitation for proposals and statement of qualifications was released November 1, 2018 for long-term MPA monitoring projects. Projects will be selected based on their alignment with the Action Plan and will begin data collection in 2019 upon OPC's approval at their May 2019 meeting.

Additional Research

- The Department, in partnership with Marine Applied Research and Exploration, completed a [deep-water visual survey](#) off the coast of Anacapa Island using a remotely operated vehicle. This survey yielded valuable information on warty sea cucumber populations both inside and outside MPAs this is being used to inform the management of this commercially valuable species.

- In coordination with Partnership for Interdisciplinary Studies of Coastal Oceans (PISCO) and RCCA, Department divers and research vessels were deployed to assist these programs in implementing state funded MPA monitoring work in the central and south coast regions.
 - A new research vessel, the [R/V Mystinus](#), was deployed this year, and is based out of Monterey. Since its maiden voyage, the R/V Mystinus has been used in collaboration with partners at PISCO and RCCA for a combined 12 field days and over 150 dives to conduct monitoring surveys inside and outside central coast MPAs.
 - The R/V Garibaldi, based out of Long Beach, was also used in collaboration with partners at PISCO and RCCA for over 30 field days and over 530 dives to conduct monitoring surveys inside and outside in southern California MPAs.
- The Department continues to build and maintain working relationships with many of our partner organizations by supporting their field operations to increase the scientific capacity of the MPA Monitoring Program. Staff spent more than 40 days in the field supporting PISCO, RCCA, the Multi-Agency Rocky Intertidal Network, Redwood National and State Parks – Redwood Creek Estuary, Monterey Bay National Marine Sanctuary, National Oceanic and Atmospheric Administration, National Parks Service, Channel Islands National Marine Sanctuary, Scripps Institution of Oceanography, and Vantuna Research Group.

Policy and Permitting: Regulatory Amendments

As part of the adaptive management framework, the Commission adopted two Department recommended MPA regulatory packages in August 2018: 1) [repeal Rockport Rocks Special Closure](#), and 2) [tribal take in MPAs](#) in four SMCAs (Kashtayit, Naples, Point Dume and Anacapa Island) and boundary modification for Stewarts Point SMCA.

International Union for the Conservation of Nature (IUCN)

In [August 2018](#), 17 California ocean [stakeholders](#) were selected by the IUCN to hold evaluation meetings and site visits to assess how California's MPA network aligns with the IUCN's [Green List program](#). If added, California's MPA network would be the first MPA network in the world added to the green list.

Scientific Collecting Permits (SCP)

SCP applications requesting access to MPAs are now assessed through an ecological decision framework. The framework uses a model to quantify cumulative impacts of research take inside MPAs. This framework also allows the SCP reviewer to make objective, quantitative, and transparent decisions on which research projects to permit inside MPAs. From January through October 2018, 161 SCPs were issued for research within MPAs.

Enforcement and Compliance:

MPA Citations

From January through June 2018, over 11,000 MPA related contacts were made by our Law Enforcement Division (LED) staff, resulting in 396 warnings and 222 citations.

Coordination

- LED staff took part in allied agency MPA enforcement trainings throughout the state
- Management Program staff coordinated with LED to compile, analyze, and interpret LED citation data for the first five years of MPA implementation in the North Coast MPA region, and to clarify MPA regulations to improve MPA compliance

Legislation

On August 24, 2018 [Assembly Bill 2369](#) was signed by Governor Brown, and goes into effect January 1, 2019. This bill increases penalties for commercial fishing operations found violating MPA regulations.

Enforcement Tools

LED continues efforts to improve the enforcement and compliance of wildlife violations through the development of a new electronic records management system. The new system help identify violation hot spots, repeat offenders, and cross county offenders.

Looking Forward:

The Department and its partners continue to work towards achieving the goals and requirements of the MLPA through the Management Program. Significant transitions and next steps include initiation of the long-term monitoring and preparation for the decadal MPA network evaluation in 2022.

These highlights would not be possible without leveraging numerous cooperative partnerships from statewide, regional, and local scales. The Department will continue to provide the Commission with annual MPA highlights to facilitate conversations about the adaptive management of the network.

If you have any questions or need more information, please contact Dr. Craig Shuman, Marine Regional Manager, at (916) 445-6459.

Attachment

ec: Stafford Lehr, Deputy Director
Wildlife and Fisheries Branch
Stafford.Lehr@Wildlife.ca.gov

Melissa Miller-Henson, Acting Executive Director
Fish and Game Commission
November 15, 2018
Page 6

Craig Shuman, D. Env, Region Manager
Marine Region
Craig.Shuman@wildlife.ca.gov

Mike Stefanak, Assistant Chief
Law Enforcement Division
Mike.Stefanak@wildlife.ca.gov

Becky Ota, Program Manager
Marine Region
Becky.Ota@wildlife.ca.gov

Deborah Halberstadt
Deputy Secretary for Ocean and Coastal Matters
Natural Resources Agency
Deborah.Halberstadt@resources.ca.gov

Conserving California's Coastal Treasures

Marine Protected Areas Safeguard Our Ocean's Bounty

A statewide network of Marine Protected Areas (MPAs) safeguards California's rich coastal resources. Located in one of the most spectacular and pristine segments of the California coast, ocean waters near Trinidad are vital to Native American communities and commercial fishing fleets. Today these waters have several layers of protection to ensure that the abundance of marine life continues to provide a way of life for communities nearby.

Trinidad Rancheria
Treasuring Culture, Honoring Tradition
 People of Trinidad Rancheria depend on the rich diversity of marine and coastal plants found within tribal lands, and our ancestral territory, as part of our daily lives. From the ocean we harvest salmon, clams and abalone (as food and for the shells used in ceremonial regalia), mussels, seaweed, eels, crab, surf fish, candle fish, and sea salt.
 Our Elders share memories of subsistence gathering and prayer activities all along the coast, from Luffenholz beach to Trinidad Harbor and beyond.
 Every object or feature within the cultural landscape has importance in our traditional way of life – from the sharp rock in the water known as kwee-ge-rep to remnants of our former village homes. This land and the beings that inhabit it are an integral part of who we are as a people. Without them, we do not exist.
 For MPA boundaries, maps, coordinates, and allowed uses, go to: www.wildlife.ca.gov/marine/MPA
 Report violations: (888) 334-CALTIP (888) 334-2258

Reading Rock State Marine Reserve (SMR)
 No take, damage, injury, or possession of any living, geological, or cultural marine resource is allowed.

Reading Rock State Marine Conservation Area (SMCA)
 Some recreational and/or commercial take of marine resources may be allowed.

Trinidad Head Area of Special Biological Significance (ASBS)
 Created to help protect water quality from local and urban runoff.

Trinidad Head ASBS is owned by the Que-Au-Hogah Indian Community of the Trinidad Rancheria, a federally-recognized tribe using best management practices to promote long-term stewardship of their ancestral cultural heritage.

From time immemorial, the waters of the North Coast have been critical sources of sustenance and cultural significance to local Native American people.

Trinidad has a seasonal fleet of salmon and crab fishermen and many charter fishing operations that offer recreational fishing opportunities.

Nearby rocky cliffs are home to one of the most diverse seabird colonies in California with twelve species and over 150,000 breeding individuals.

MPAs – Good for the Ocean, Good for You!

MPA Mobile Website

Interpretive Panel

MARINE PROTECTED AREA

SWAMI'S STATE MARINE CONSERVATION AREA

Swami's State Marine Conservation Area (Take Restrictions Apply)

TAKE RESTRICTIONS APPLY
PESCA RESTRINGIDA

C.D.F.W. MPA Mobile

C.C.R. Title 14, Section 632. Report violations to 1-888-334-CALTIP (1-888-334-2258). For more detailed information on regulations, boundaries, coordinates, and definitions, visit: www.wildlife.ca.gov/MPAs

MARINE PROTECTED AREA



NO FISHING OR COLLECTING

C.C.R. TITLE 14, SECTION 632
www.wildlife.ca.gov/MPAs
 REPORT VIOLATIONS TO:
 1-888-334-CALTIP (2258)

CALIFORNIA MARINE PROTECTED AREAS

You are Here Sign (left)
No Fishing Sign (right)

Conserving California's Coastal Treasures



California's marine protected areas (MPAs) conserve, restore, and improve the health of our ocean, similar to national parks and forests on land. The California MPA network includes MPAs and other protected areas. Each area is unique in its purpose and allowed uses.

Protected areas around Lawson's Landing are:

- Bodega Head, Estero de Limanour, Point Reyes, North Farallon Islands, and Southeast Farallon Island State Marine Reserves (SMR)**
 No take, damage, injury, or possession of any living, geological, or cultural marine resource is allowed.
 Se prohíbe la toma, posesión o daño de todo recurso marino vivo, geológico o cultural.
- Russian River, Bodega Head, Drake Estero, Point Reyes, Duxbury Reef, and Southeast Farallon Island State Marine Conservation Areas (SMCA)**
 Some recreational and/or commercial take of marine resources may be allowed.
 La toma de algunos recursos marinos, recreativos y/o comerciales es permitida.
- Russian River, Estero Americano, and Estero de San Antonio State Marine Recreational Management Areas (SMRMA)**
 Legal waterfowl hunting is allowed.
 Caza legal de aves acuáticas está permitida.
- Point Reyes, Bodega Head, Drake Estero, Point Reyes, Duxbury Reef, North Farallon Islands, and Southeast Farallon Island Special Closure**
 Prohibits access or restricts boating activities in waters adjacent to seabird nesting and rookery sites, and marine mammal haul-out sites. The managed area boundary is measured 100 feet inward from the lowest mean tide line around these features.
 Prohibido el acceso y restringido el acceso a embarcaciones de navegación en aguas adyacentes a los sitios de anidación, colonias de aves marinas, y sitios de movilización de mamíferos marinos. El límite de área se mide 100 pies hacia el mar a partir de la línea de marea más baja alrededor de estas características.

MPAs – Good for the Ocean, Good for You!
 Know the Rules Before You Head Out.

For Ocean Fishery Laws and Regulations go to: www.wildlife.ca.gov/Fishing/Ocean
 For MPA boundaries, maps, coordinates, and allowed uses, go to: www.wildlife.ca.gov/MPAs
 MPA-related questions? Contact: AskMPA@wildlife.ca.gov

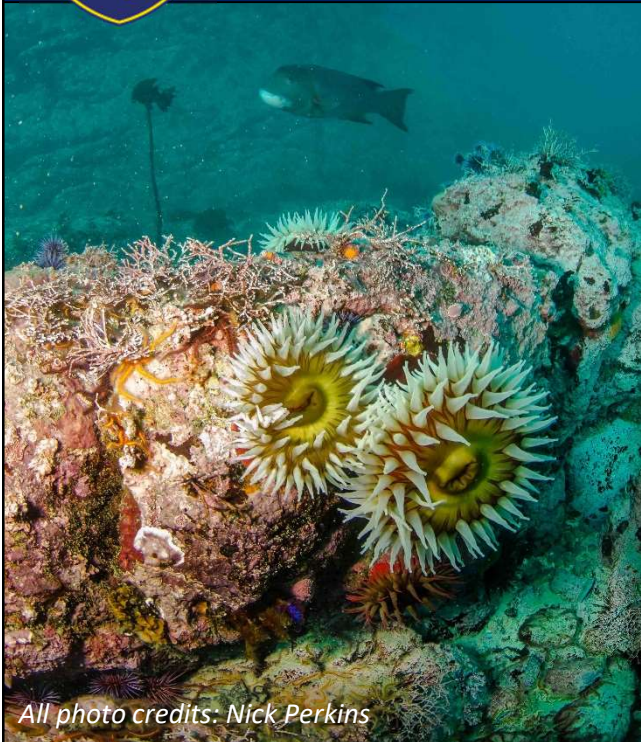
Lawson's Landing Information: (707) 878-2443
 Report Violations: (888) 334-CALTIP (888) 334-2258

MPA Mobile Website

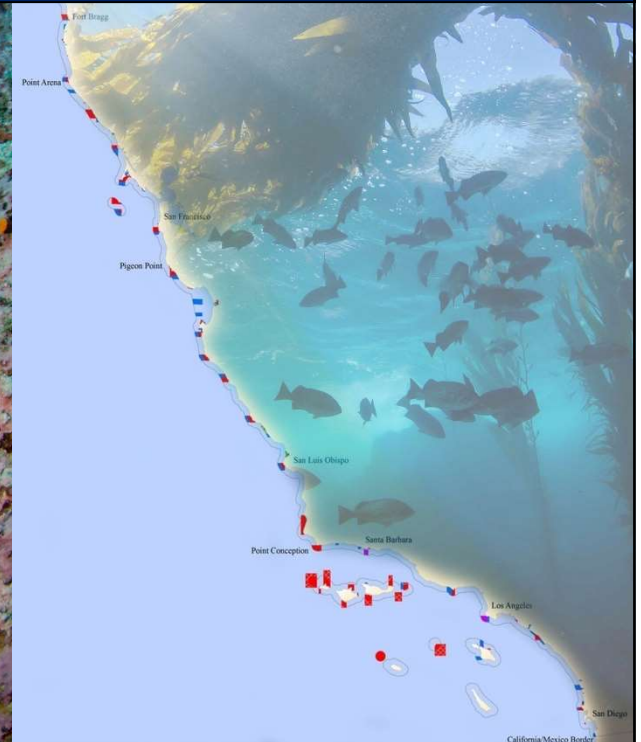
Harbor Panel



Marine Protected Areas Management Program Highlights - 2018



All photo credits: Nick Perkins



Amanda Van Diggelen, Environmental Scientist

California Fish and Game Commission Meeting

December 12-13, 2018

Oceanside, CA



Outline

MPA Management Program

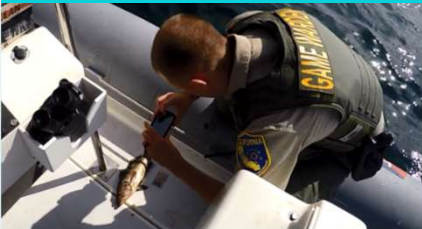
Highlights



Outreach and Education



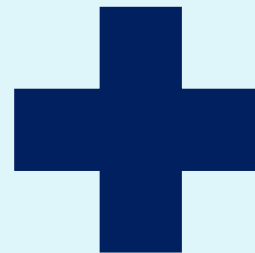
Enforcement and Compliance



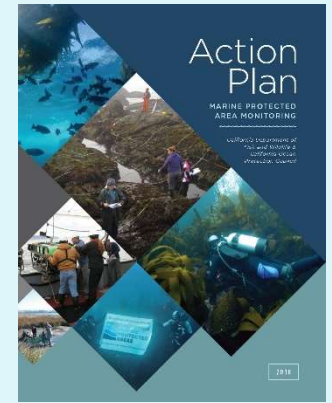
Research and Monitoring



Policy and Permitting



Next Steps





MPA Statewide Leadership Team



**OCEAN
PROTECTION
COUNCIL**

Regional Tribal Representation



**COLLABORATIVE
NETWORK**



**NATIONAL MARINE
SANCTUARIES**
WEST COAST REGION



**CALIFORNIA
OCEAN
SCIENCE
TRUST**



RESOURCES LEGACY FUND
Creative Solutions. Lasting Results.



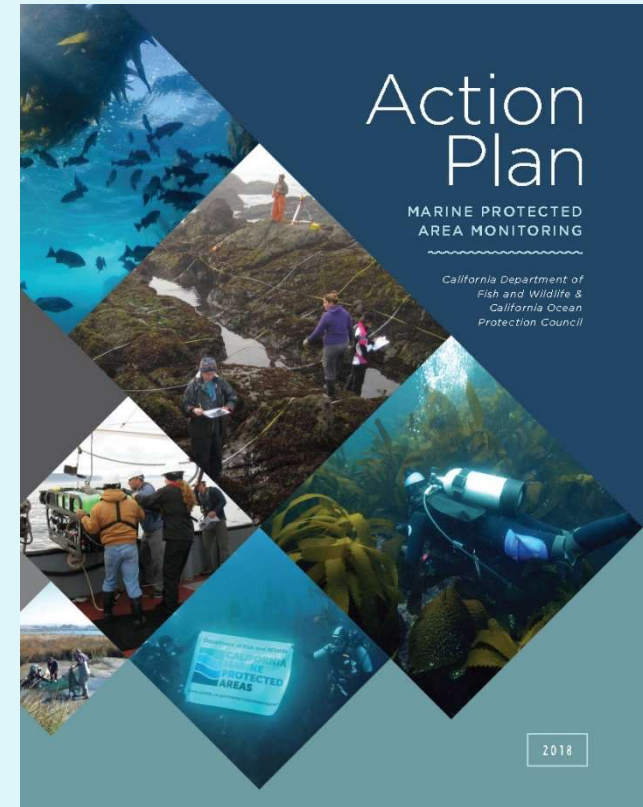
**CALIFORNIA STATE
LANDS
COMMISSION**



MPA Management Program Highlights

Statewide long-term monitoring

- Priority habitats (kelp forest, rocky intertidal, mid-depth rock)
- Upcoming monitoring (May 2019)
 - \$9.5 million
 - Key habitats, indicator species, human uses
 - Traditional Ecological Knowledge

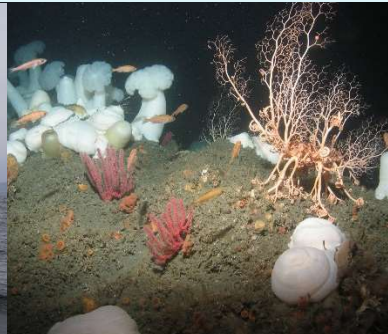




Additional Highlight

International Union for Conservation of Nature (IUCN)

- Working to achieve global protected area management standards





Outreach and Education

Interpretive and regulatory signs

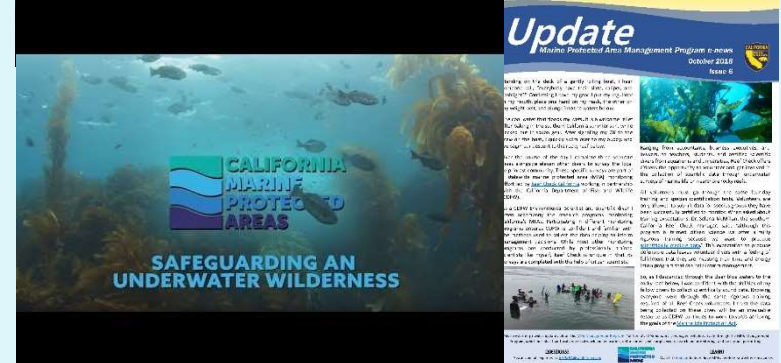
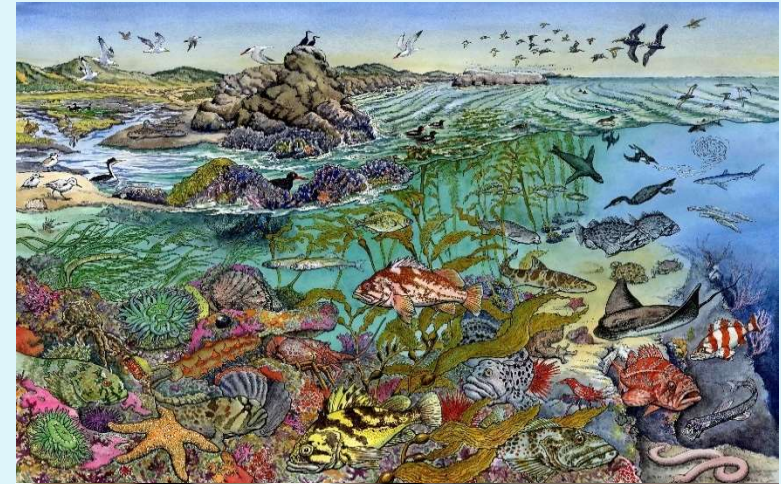
- 59 installed statewide
- 450+ installed to date

Parks Online Resources for Teachers and Students (PORTS)

- 15,600+ students participated

Communicate MPA information

- CNRA open data platform
- Informative MPA videos
- MPA management e-news
- MPA Collaboratives
- Distribute MPA Publications
- Exploring CA MPAs blog series





Research and Monitoring

Phase 1: regional, baseline monitoring

- Completed February 2018

Phase 2: statewide, long-term monitoring

- Guided by Action Plan
- \$9.5 M long-term monitoring funds

Additional Research

- Remotely operated vehicle surveys
- Research vessel collaboration
 - Over 680 kelp forest monitoring scuba dives
- Field operation partnerships
 - 10+ monitoring programs over 40+ field days





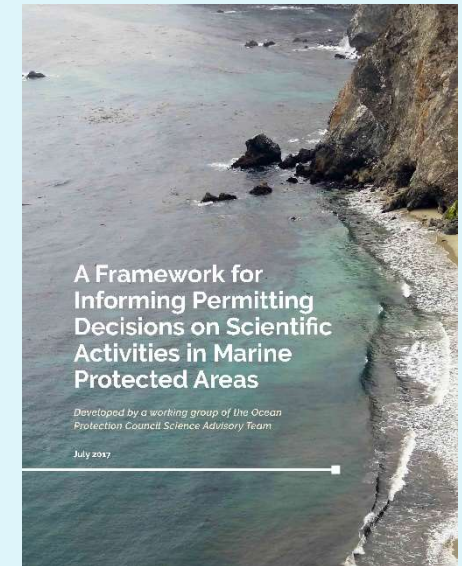
Policy and Permitting

Scientific Collecting Permits (SCPs)

- 161 SCPs issued for research in MPAs
 - 564 SCPs issued from 2014 to 2017
- Journal Publication, June 2018

2018 Regulatory Packages

- Repeal Rockport Rocks Special Closure
- Boundary change, Stewarts Point SMR and SMCA
- Tribal take in MPAs

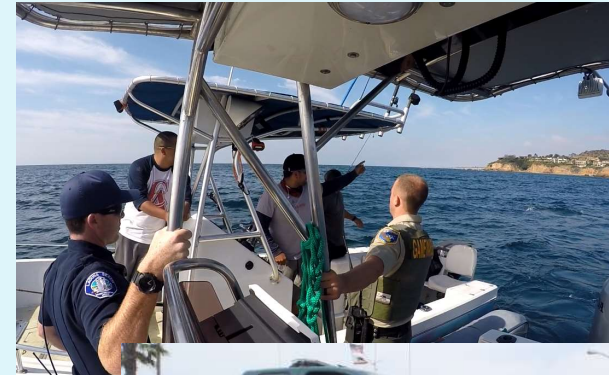




Enforcement and Compliance

Enforcement

- New Fish and Game Code increases penalties for commercial MPA violations
- Over 11,000 MPA related contacts from January to June 2018
 - 396 warnings
 - 222 citations issued



Enforcement Tools

- Developing a records management system





Looking Forward

Statewide Long-term Monitoring

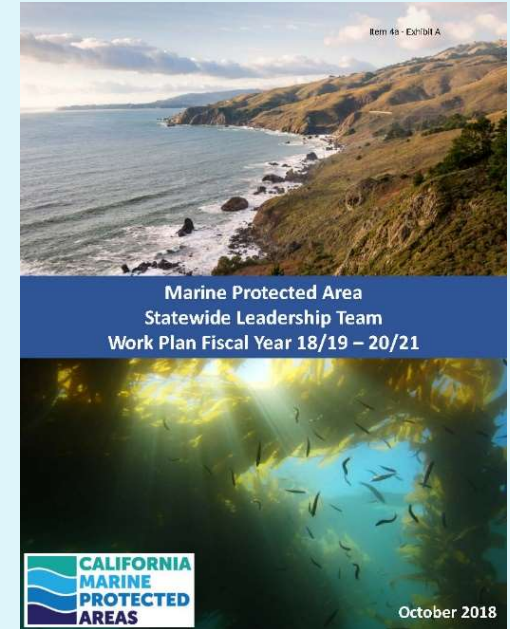
- Begins May 2019
- Guided by MPA Monitoring Action Plan

Partnership Team Workplan

- Approved by Ocean Protection Council
- Outlines MPA Leadership Team priorities

10-year Management Review

- 2022
- Working with Oregon DFW partners





Thank You ♦ Questions?



Amanda Van Diggelen

Amanda.VanDiggelen@wildlife.ca.gov

