

American River Natural Resource Management Plan Update

SACRAMENTO COUNTY REGIONAL PARKS

MAY 13



Outline



Purpose of Plan



Desired Conditions



Implementation Plan



Agency Coordination



Public Outreach

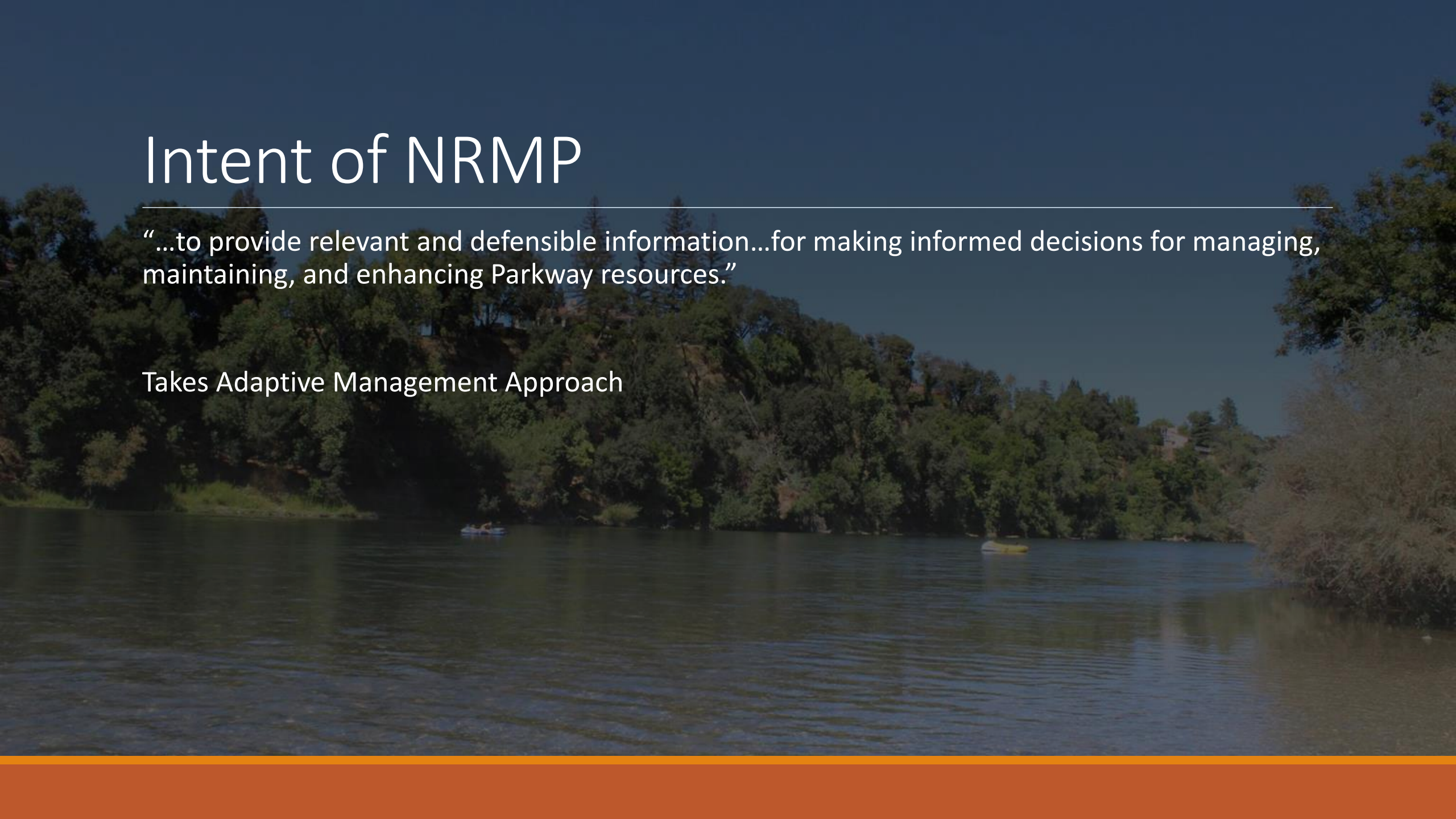


Schedule

Intent of NRMP

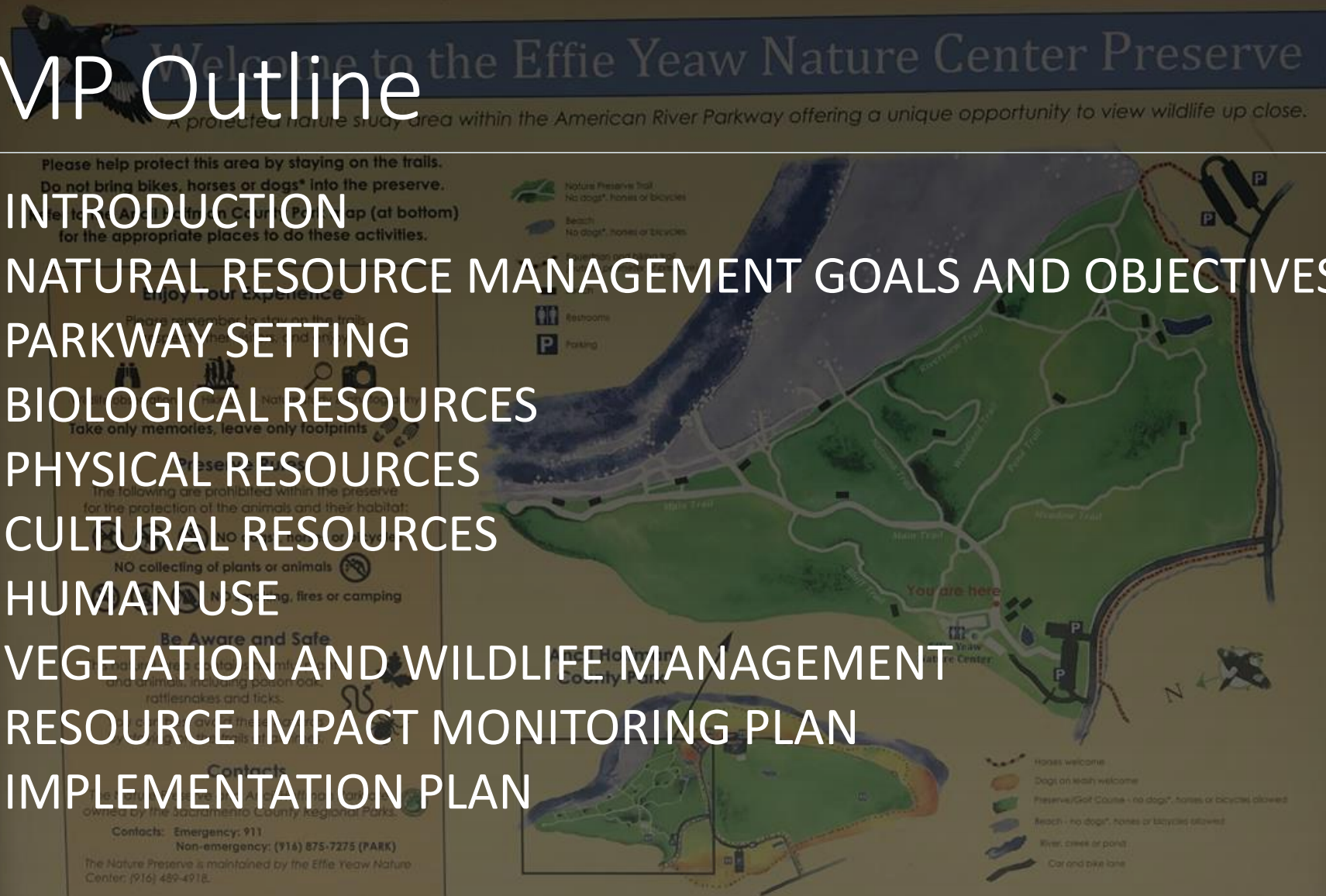
“...to provide relevant and defensible information...for making informed decisions for managing, maintaining, and enhancing Parkway resources.”

Takes Adaptive Management Approach



NRMP Outline

- 1.0 INTRODUCTION
- 2.0 NATURAL RESOURCE MANAGEMENT GOALS AND OBJECTIVES
- 3.0 PARKWAY SETTING
- 4.0 BIOLOGICAL RESOURCES
- 5.0 PHYSICAL RESOURCES
- 6.0 CULTURAL RESOURCES
- 7.0 HUMAN USE
- 8.0 VEGETATION AND WILDLIFE MANAGEMENT
- 9.0 RESOURCE IMPACT MONITORING PLAN
- 10.0 IMPLEMENTATION PLAN



Desired Conditions:

Determined by the following factors for each of the
19 Area Plans:

Land Use Designation

Existing Vegetation

Native and Special Status Species

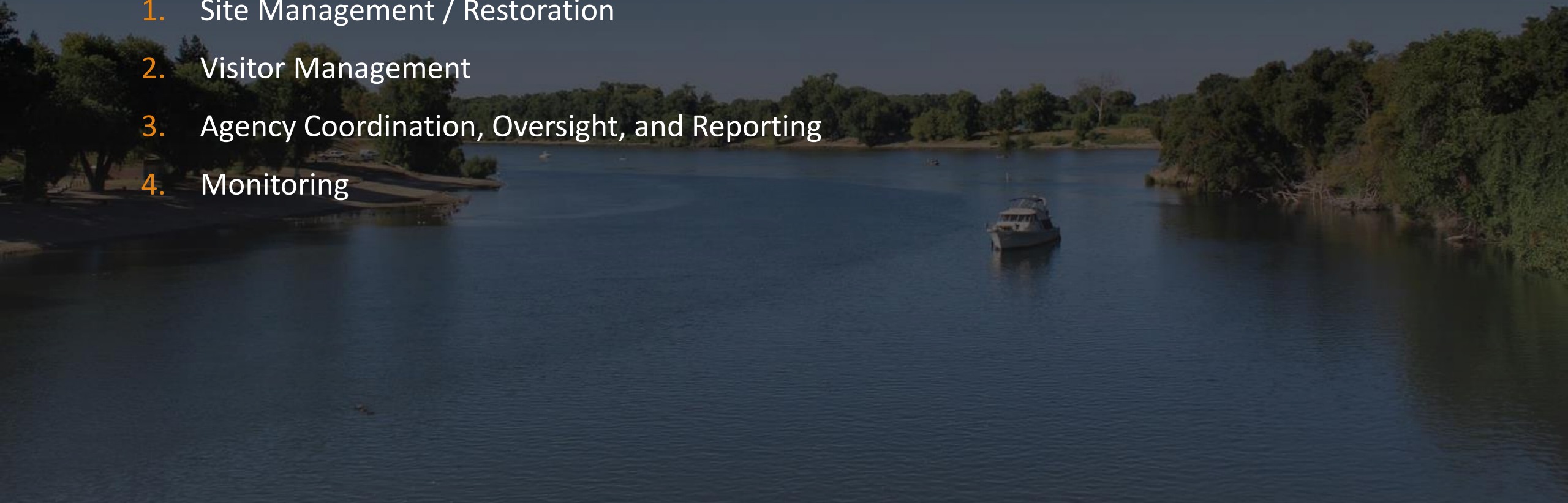
Invasive Species

Practicality of Restoration

Implementation Activities

Includes the following four types of actions:

1. Site Management / Restoration
2. Visitor Management
3. Agency Coordination, Oversight, and Reporting
4. Monitoring





Implementation: Site Management / Restoration

Identifying Area for Restoration

Protecting Special Status Species

Managing Areas Impacted by Recreation Use

Implementation: Visitor Management

Interrelates with Site
Management

Use of Interpretation and
Messaging to Lead to Desired
Visitor Behaviors

Law Enforcement



Implementation: Agency Coordination, Oversight, and Reporting

Sacramento County Regional Parks coordinates with numerous agencies to minimize impacts on the natural resources in the Parkway:

- WCB
- SAFCA
- Water Forum
- Army Corp
- US Fish and Wildlife
- DWR





Implementation: Monitoring

ENSURE GOALS AND OBJECTIVES ARE MET AND ADAPT IF APPROPRIATE

An aerial photograph of a river winding through a landscape. The river is dark and occupies the right side of the frame. The left bank is covered in dense green trees and shrubs. The right bank is a mix of dry, brownish grass and patches of green trees. In the upper right corner, several tall, metal power line towers are visible against the sky. The overall scene is captured from a high angle, looking down at the river and its surroundings.

Agency Coordination

Examples:

- Work with SAFCA on Bank Protection Program
- Work with Water Forum on Gravel Augmentation

Public Outreach



PUBLIC MEETINGS



WORKSHOPS



ONLINE COMMENT
TOOL

Schedule – Show PDF

