



American River Parkway NRMP Status Update

Lower American River Conservancy Program

Meeting Agenda

1. NRMP Purpose, Goals and Objectives
2. Project Status
3. Public Outreach Activities
4. Parkway Mapping
5. Next Steps

An aerial photograph of a river winding through a landscape. The river is dark and occupies the lower right portion of the frame. The surrounding land is a mix of green trees and brownish-yellow grassy areas. In the far distance, a city skyline with several tall buildings is visible under a hazy sky. The text 'NRMP Purpose, Goals and Objectives' is overlaid in white, sans-serif font across the middle of the image. A thin white horizontal line is positioned below the text.

NRMP Purpose, Goals and Objectives

Mission and Purpose of NRMP

To provide relevant and defensible information to the Parkway Manager for making informed decisions for managing, maintaining, and enhancing Parkway resources.

Multi Benefit Strategy

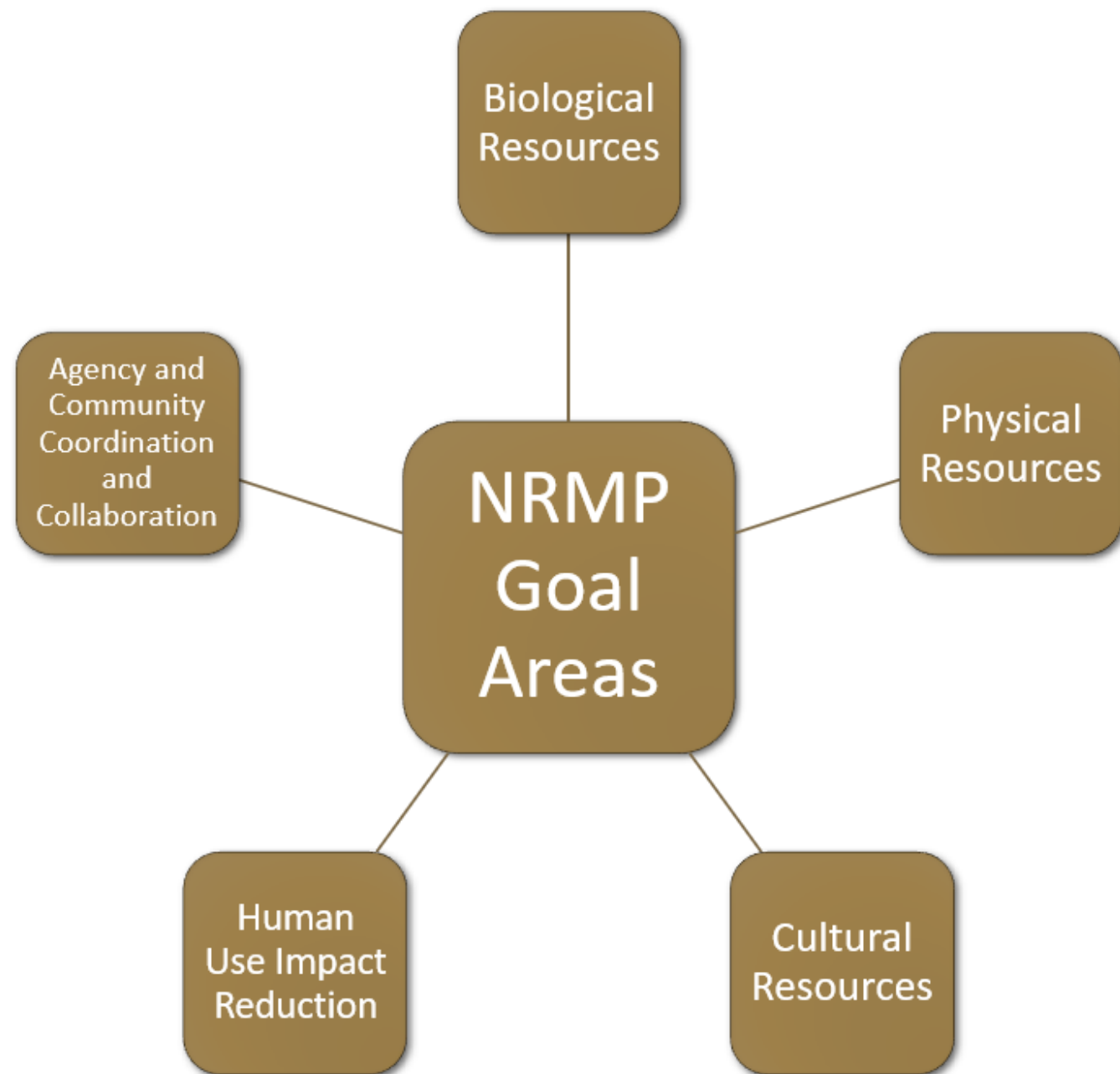


NRMP Task Force

The purpose of the American River Parkway Natural Resources Management Plan (NRMP) Task Force is to provide input and direction to the development and implementation of the NRMP and inclusion of vegetation and wildlife management and resource impact monitoring chapters.

Task Force Member Organizations

- Wildlife Conservation Board
- Water Forum
- SAFCA
- US Army Corp of Engineers
- US Fish and Wildlife Service
- SMUD
- American River Parkway Stakeholders
- WRC Environmental
- cbec eco engineering
- ICF
- MIG



Goal Area	Goals	Objectives/Performance Measures	Lead	Support	Funding	Completion Date
GOAL AREA 1. Biological Resources	1.1 Update mapping and surveying of biological resources within the Parkway.	1.1a: Completion of vegetation community map. 1.1b: Completion of shaded riverine aquatic habitat map. 1.1c: Completion of systematic sensitive species surveys. 1.1d: Completion of systematic invasive species surveys.	County Regional Parks	TBD	Grants to County Regional Parks	Within two years of NRMP completion and every 10 years thereafter
	1.2 Preserve high-quality native vegetation communities.	1.2a: Preservation of (TBD) ac of high-quality native riparian vegetation communities. 1.2b: Preservation of (TBD) ac of high-quality native grassland vegetation communities. 1.2c: Preservation of (TBD) ac of high-quality native woodland vegetation communities. 1.2d: Preservation of (TBD) ac of high-quality native elderberry vegetation communities.	County Regional Parks	TBD	County Regional Parks Maintenance	Every 10 years
	1.3 Rehabilitate vegetation communities altered by fire or homeless populations.	1.3a: Rehabilitation of (TBD) ac of native riparian vegetation communities. 1.3b: Rehabilitation of (TBD) ac of native grassland vegetation communities. 1.3c: Rehabilitation of (TBD) ac of native woodland vegetation communities. 1.3d: Rehabilitation of (TBD) ac of native elderberry vegetation communities.	USACE	Bureau of Reclamation and Water Forum	Project Mitigation	Every 10 years
	1.4 Enhance vegetation communities not altered by human activity.	1.4a: Enhancement of (TBD) ac of native riparian vegetation communities. 1.4b: Enhancement of (TBD) ac of native grassland vegetation communities. 1.4c: Enhancement of (TBD) ac of native woodland vegetation communities. 1.4d: Enhancement of (TBD) ac of native elderberry vegetation communities.	USACE	Bureau of Reclamation and Water Forum	Project Mitigation	Every 10 years

Goal Area	Goals	Objectives/Performance Measures	Lead	Support	Funding	Completion Date
GOAL AREA 1. Biological Resources (Continued)	1.5 Naturalize vegetation communities altered by human activity.	1.5a: Naturalization of (TBD) ac of native riparian vegetation communities. 1.5b: Naturalization of (TBD) ac of native grassland vegetation communities. 1.5c: Naturalization of (TBD) ac of native woodland vegetation communities. 1.5d: Naturalization of (TBD) ac of native elderberry vegetation communities.	USACE	Bureau of Reclamation and Water Forum	Project Mitigation	Every 10 years
	1.6 Preserve habitats for native species populations	1.6a: Preservation of existing salmonid spawning habitat. 1.6b: Preservation of existing salmonid rearing habitat. 1.6c: Preservation of existing shaded riverine aquatic habitat. 1.6d: Preservation of existing western pond turtle habitat. 1.6e: Preservation of existing western yellow-billed cuckoo habitat. 1.6f: Preservation of existing Sanford's arrowhead habitat.	Bureau of Reclamation, Water Forum, USACE	County Regional Parks	TBD	Ongoing
	1.7 Increase habitat connectivity and expand travel corridors to support local and migratory species movement.	1.7a Expansion of high-quality native vegetation communities by (TBD) ac.	USACE	Bureau of Reclamation and Water Forum	Project Mitigation	Every 10 years
	1.8 Reduce or maintain the prevalence of invasive non-native species.	1.8a: Reduction of tree of heaven populations by (TBD) ac. 1.8b: Reduction of black locust populations by (TBD) ac. 1.8c: Maintenance of <u>arundo</u> populations at current levels. 1.8d: Maintenance of pampas grass populations at current levels. 1.8e: Maintenance of red sesbania populations at current levels. 1.8f: Maintenance of Chinese tallow populations at current levels. 1.8g: Maintenance of Scotch broom populations at current levels. 1.8h: Maintenance of Spanish broom populations at current levels. 1.8i: Maintenance of French broom populations at current levels. 1.8j: Maintenance of oleander populations at current levels. 1.8k: Maintenance of pyracantha populations at current levels.	County Regional Parks	TBD	Grants to County Regional Parks	Ongoing



Project Status

NRMP Chapter Status

Chapters	Public Draft Status
1. Introduction	Draft Complete
2. NRM Goals and Objectives	In Progress
3. Parkway Setting	Draft Complete
4. Biological Resources	In Progress
5. Physical Resources	Distributed to Task Force for Review with TF Meeting #4 Packet
6. Cultural Resources	In Progress
7. Human Use Impact Reduction	In Progress
8. Vegetation and Wildlife Management	In Progress
9. Resource Impact Monitoring Plan	In Progress
10. Implementation Plan	In Progress

NRMP Schedule

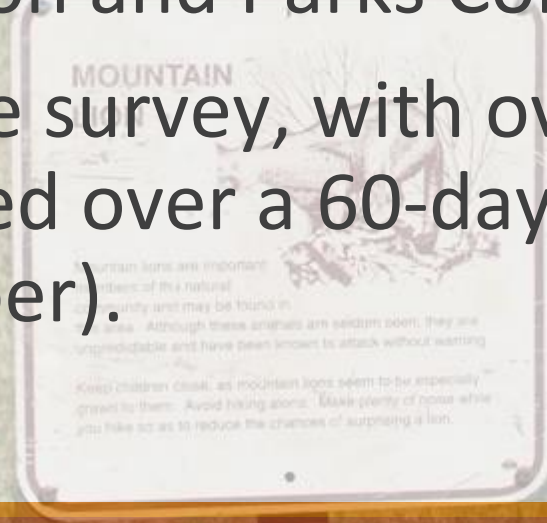
Date	Task
October-December 2020:	<ul style="list-style-type: none">• Three Monthly Task Force Meetings• Work on NRMP Chapters
January 2021:	<ul style="list-style-type: none">• NRMP Public Draft Plan Environmental Review begins• Army Corp of Engineers hydraulic analysis begins• Task Force Meeting
February 2021:	<ul style="list-style-type: none">• Final Task Force Meeting• American River Parkway Advisory Committee and Recreation and Parks Commission meetings
Spring 2021:	<ul style="list-style-type: none">• Environmental Review for CEQA compliance
Summer 2021:	<ul style="list-style-type: none">• Board of Supervisors meeting• Final NRMP



Public Outreach Activities

Public Outreach Activities – Summer 2020

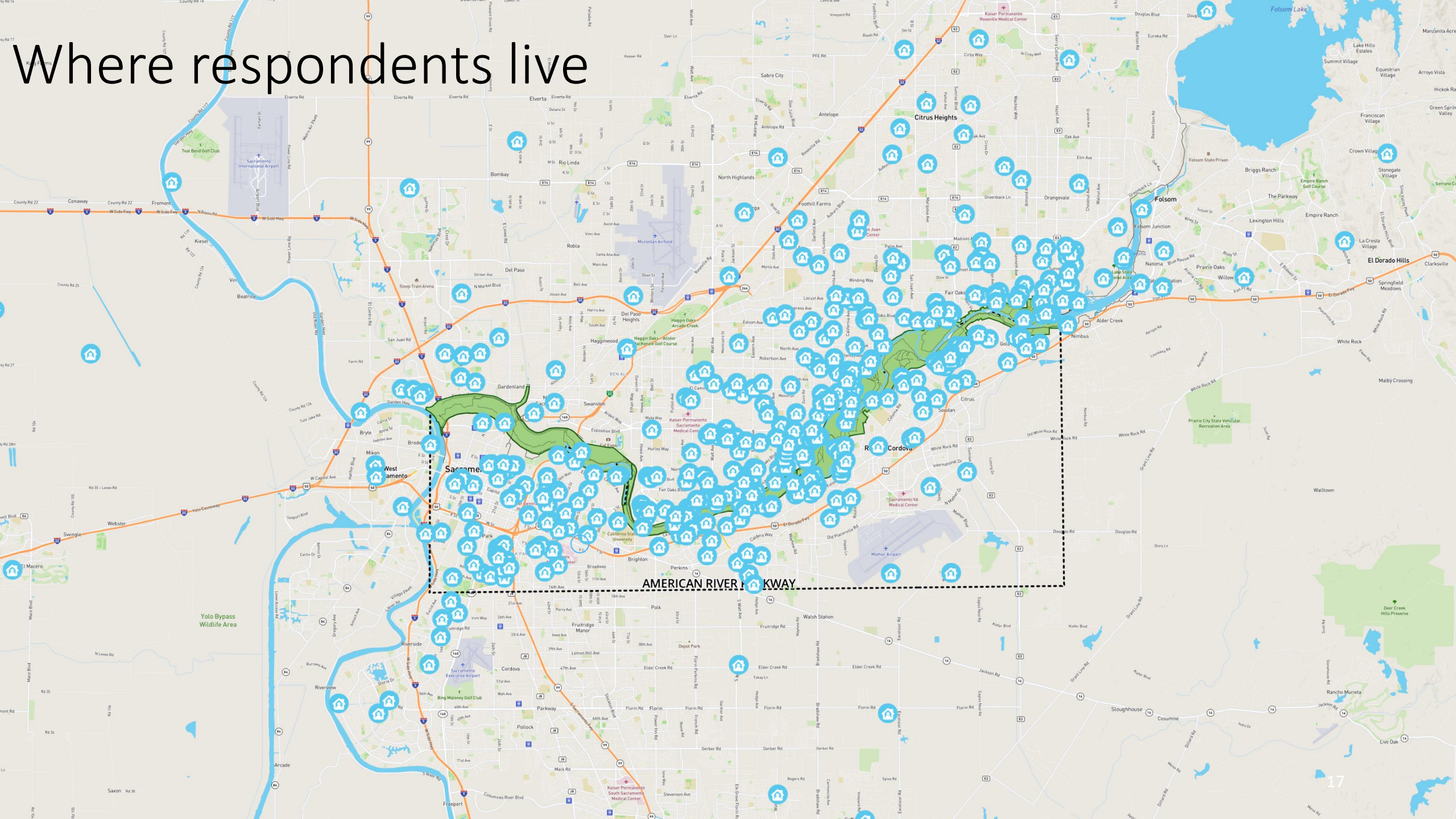
- Facilitation of two separate open community workshops (July 16th and 17th)
- American River Parkway Advisory Committee on July 10th
- Recreation and Parks Commission meeting on July 23rd
- An online survey, with over 1600 respondents, was conducted over a 60-day period (from Mid-July to mid-September).



Preliminary Results of Online Public Survey

- Survey was live for two months (Mid-July – Mid-September)
- Used online platform “Maptionnaire”
- 1626 respondents participated in the survey
- Most respondents use the Parkway for multiple activities with the most popular being:
 - walking/jogging/running,
 - enjoying nature, and
 - riding bicycles.
- Strong support for all NRMP Goals

Where respondents live

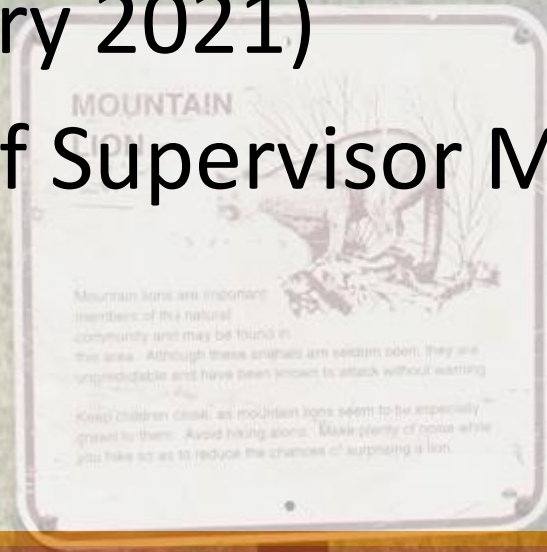


Where respondents enter the Parkway

The map displays the Sacramento River and the Parkway, with a heatmap overlay indicating the density of respondents entering the Parkway. The heatmap shows a high concentration of entries along the Parkway, particularly in the central and eastern parts of the city. The map also shows major roads, landmarks, and neighborhood names.

Future Public Outreach

- Open community online workshop (Spring 2021)
- American River Parkway Advisory Committee and Recreation and Parks Commission meetings (February 2021)
- Board of Supervisor Meeting (Summer 2021)



Parkway Mapping

Mapping Approach

- Divides Parkway into 19 Area Plans
- Considers existing conditions and rates current status of all areas in the Parkway into four categories: (1) Preservation; (2) Rehabilitation; (3) Naturalization; and (4) Enhancement
- Acknowledges existing and future proposed project
 - Including WCB Bushy Lake Conceptual Restoration Plan (In collaboration with CSUS - Dr. Michelle Stevens)

Proposed Management Actions

Preservation: keeping a resource in good condition

Rehabilitation: fixing a resource that has been recently degraded

Naturalization: converting a formerly altered area to a more natural condition

Enhancement: converting an unaltered area to a different habitat type



 Parkway Boundary

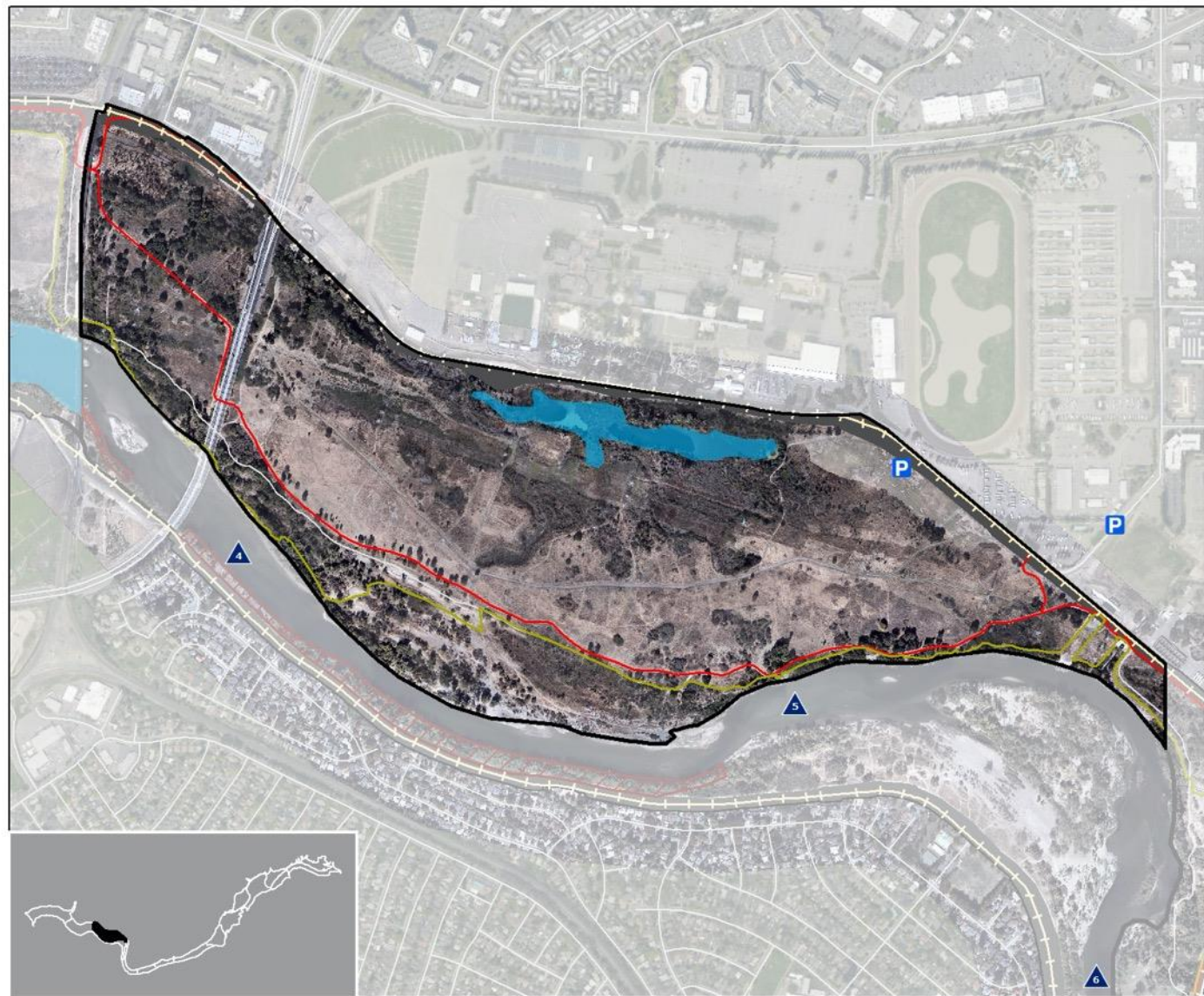
AREAS

- | | | | |
|------------------|------------------|------------------------------|-------------------|
| 1 Discovery Park | 5 Campus Commons | 10 River Bend Park | 15 Sacramento Bar |
| 2 Woodlake | 6 Howe Avenue | 11 Sarah Court Access | 16 Lower Sunrise |
| 3 Cal Expo | 7 Watt Avenue | 12 Ancil Hoffman County Park | 17 Sunrise Bluffs |
| 4 Paradise Beach | 8 SARA Park | 13 Rossmorr Bar | 18 Upper Sunrise |
| | 9 Arden Bar | 14 San Juan Bluffs | 19 Sailor Bar |

0 0.5 1 2 Miles



American River Parkway



Area Plan 3 Cal Expo

Key Indicators

Feet 0 1,000 2,000

1. Land Use

- Nature Study Area
- Protected Area
- Limited Recreation Area
- Developed Recreation Area
- Other
- Open Water



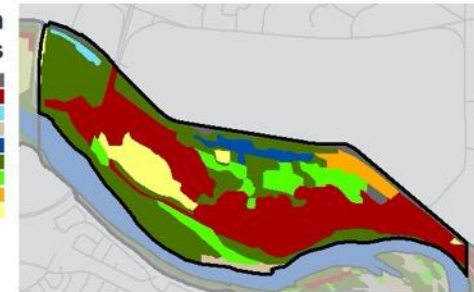
2. Inundation Extent

- Recurrence Interval - 2 years
- Recurrence Interval - 25-100 years
- Recurrence Interval - 200 years
- Upland/Behind Levee
- No Data
- Main Channel



3. Vegetation Communities

- Developed
- Elderberry Savanna
- Freshwater Emergent Wetland
- Gravel Bar Chaparral
- Open Water
- Riparian Woodland/Forest
- Riparian Scrub
- Turf/Turf with Trees
- Valley Foothill Grassland

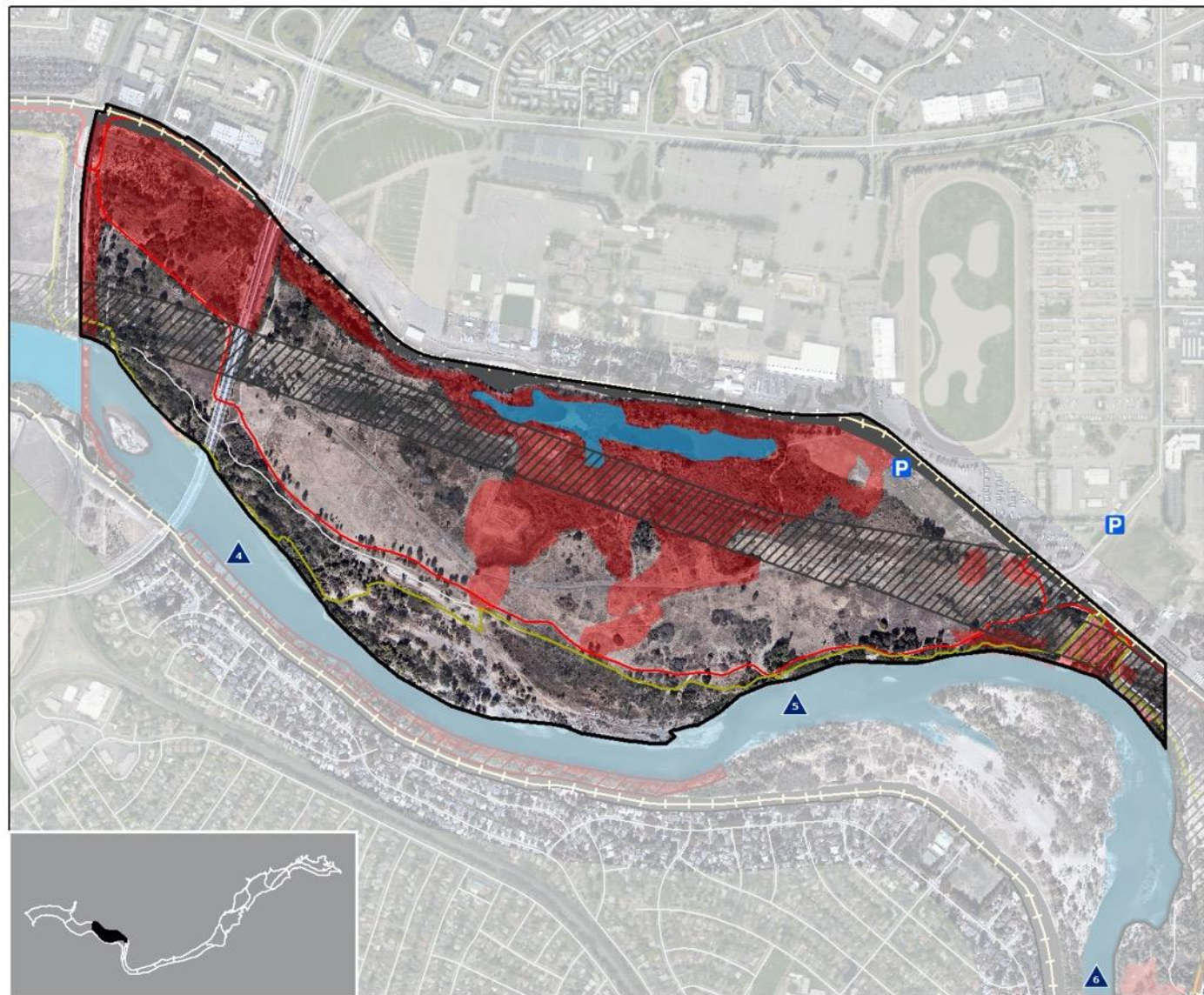


4. Invasive Species *

- Arundo Donax
- Pampas Grass
- Red Sesbania
- Open Water



* Present and Removed



Feet 0 500 1,000

▲ River Mile
 P Parking
 — Bike Trail
 — Horse Trail
 — Levee
 ■ Developed Area
 ▨ Utility Easement
 ▨ Bank Protection
 ■ Intentionally Altered
 ■ Open Water/River

Area Plan 3

Cal Expo Intentionally Altered Areas

Key Indicators

Feet 0 1,000 2,000 N

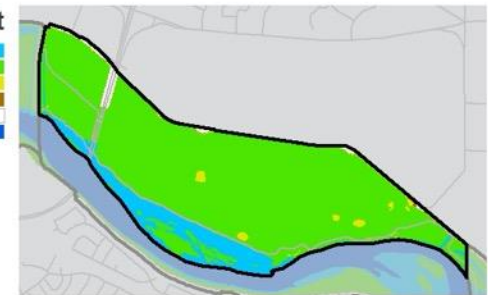
1. Land Use

■ Nature Study Area
 ■ Protected Area
 ■ Limited Recreation Area
 ■ Developed Recreation Area
 ■ Other
 ■ Open Water



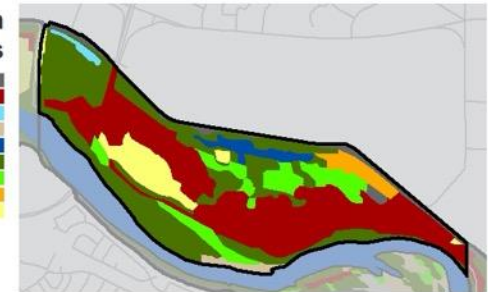
2. Inundation Extent

■ Recurrence Interval - 2 years
 ■ Recurrence Interval - 25-100 years
 ■ Recurrence Interval - 200 years
 ■ Upland/Behind Levee
 ■ No Data
 ■ Main Channel



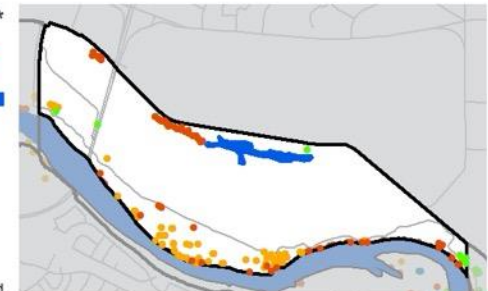
3. Vegetation Communities

■ Developed
 ■ Elderberry Savanna
 ■ Freshwater Emergent Wetland
 ■ Gravel Bar Chaparral
 ■ Open Water
 ■ Riparian Woodland/Forest
 ■ Riparian Scrub
 ■ Turf/Turf with Trees
 ■ Valley Foothill Grassland

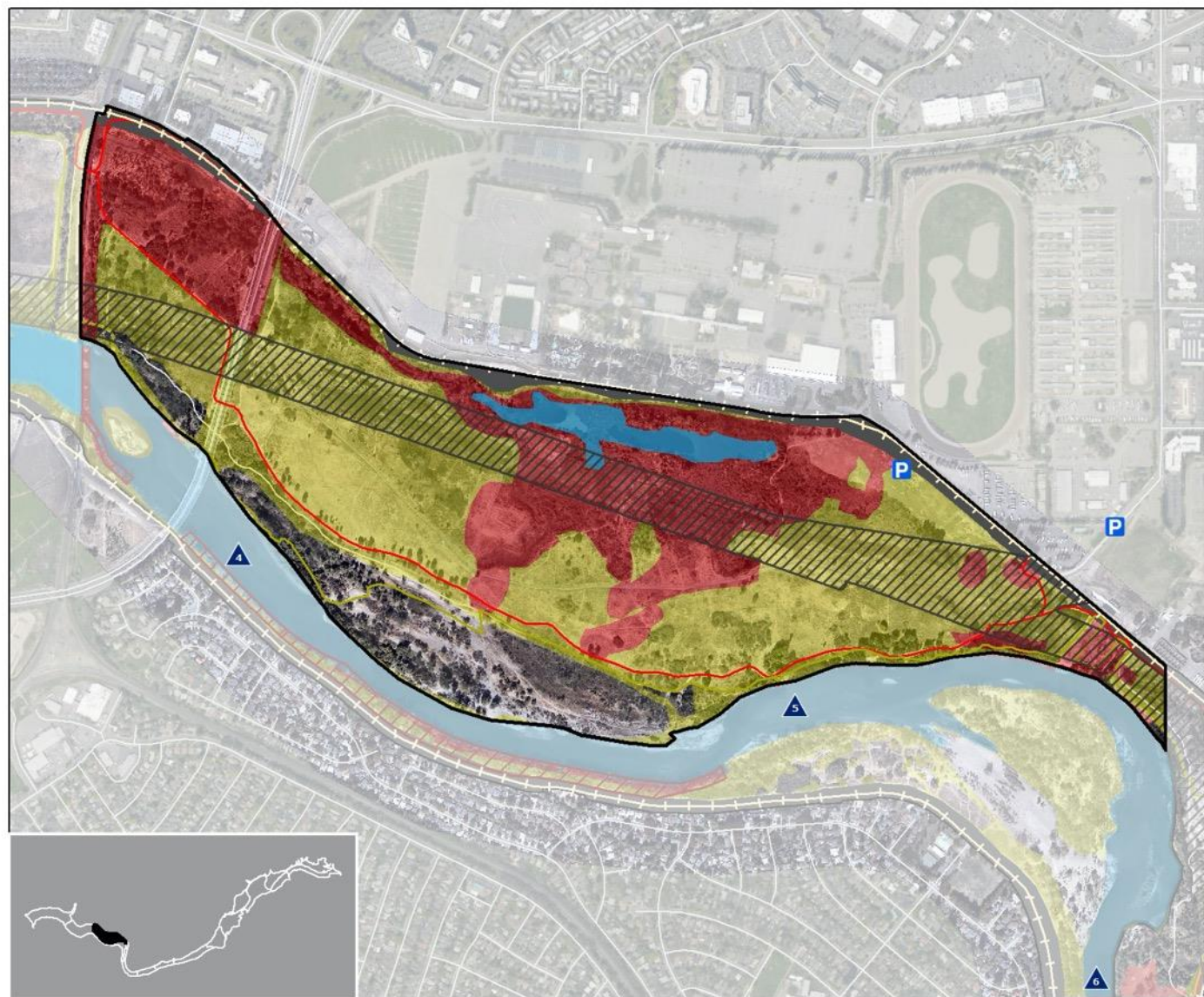


4. Invasive Species *

■ Arundo Donax
 ■ Pampas Grass
 ■ Red Sesbania
 ■ Open Water



* Present and Removed



Feet 0 500 1,000

- River Mile
- Bike Trail
- Developed Area
- Intentionally Altered
- Parking
- Horse Trail
- Utility Easement
- Unintentionally Altered
- Levee
- Bank Protection
- Open Water/River

Key Indicators

Feet 0 1,000 2,000

1. Land Use

- Nature Study Area
- Protected Area
- Limited Recreation Area
- Developed Recreation Area
- Other
- Open Water



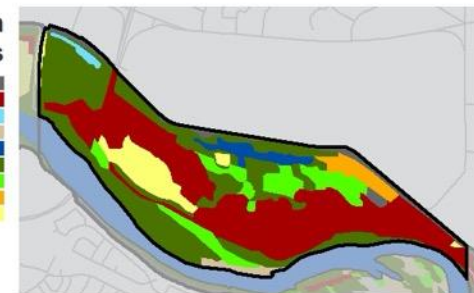
2. Inundation Extent

- Recurrence Interval - 2 years
- Recurrence Interval - 25-100 years
- Recurrence Interval - 200 years
- Upland/Behind Levee
- No Data
- Main Channel



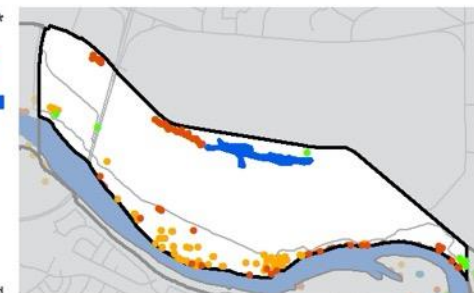
3. Vegetation Communities

- Developed
- Elderberry Savanna
- Freshwater Emergent Wetland
- Gravel Bar Chaparral
- Open Water
- Riparian Woodland/Forest
- Riparian Scrub
- Turf/Turf with Trees
- Valley Foothill Grassland

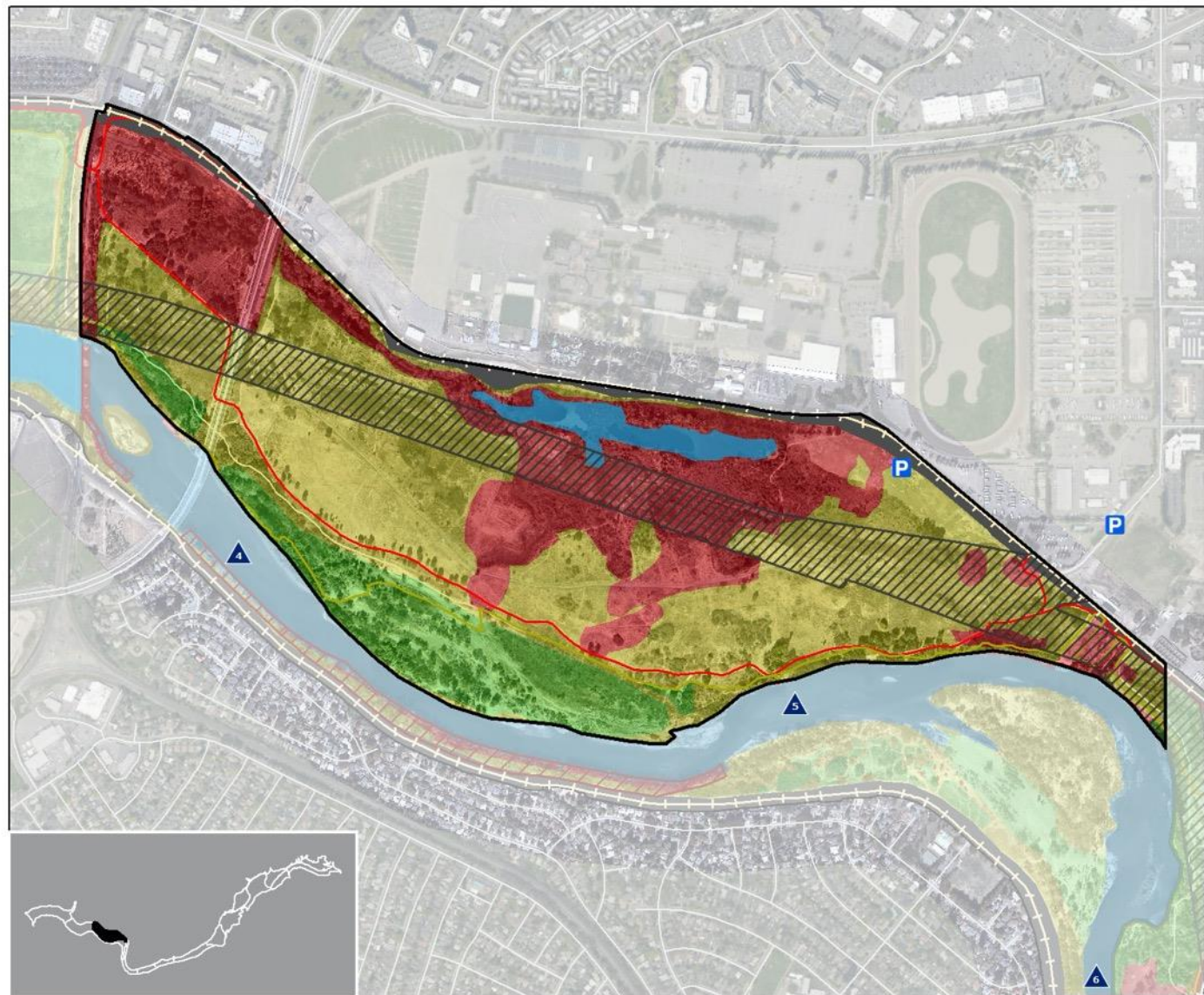


4. Invasive Species *

- Arundo Donax
- Pampas Grass
- Red Sesbania
- Open Water



* Present and Removed



Feet 0 500 1,000

- ▲ River Mile
- P Parking
- Bike Trail
- Horse Trail
- Levee
- Developed Area
- Utility Easement
- Bank Protection
- Intentionally Altered
- Unintentionally Altered
- Unaltered
- Open Water/River

Area Plan 3

Cal Expo Unaltered Areas

Key Indicators

Feet 0 1,000 2,000 N

1. Land Use

- Nature Study Area
- Protected Area
- Limited Recreation Area
- Developed Recreation Area
- Other
- Open Water



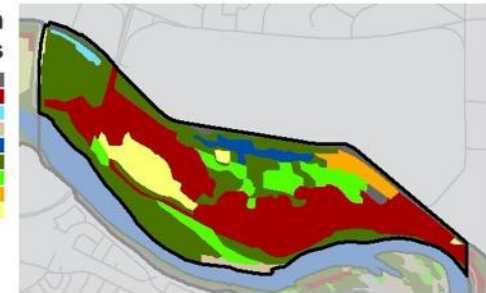
2. Inundation Extent

- Recurrence Interval - 2 years
- Recurrence Interval - 25-100 years
- Recurrence Interval - 200 years
- Upland/Behind Levee
- No Data
- Main Channel



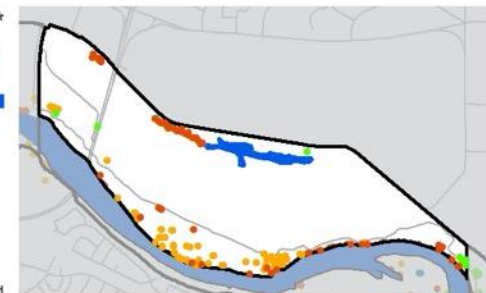
3. Vegetation Communities

- Developed
- Elderberry Savanna
- Freshwater Emergent Wetland
- Gravel Bar Chaparral
- Open Water
- Riparian Woodland/Forest
- Riparian Scrub
- Turf/Turf with Trees
- Valley Foothill Grassland

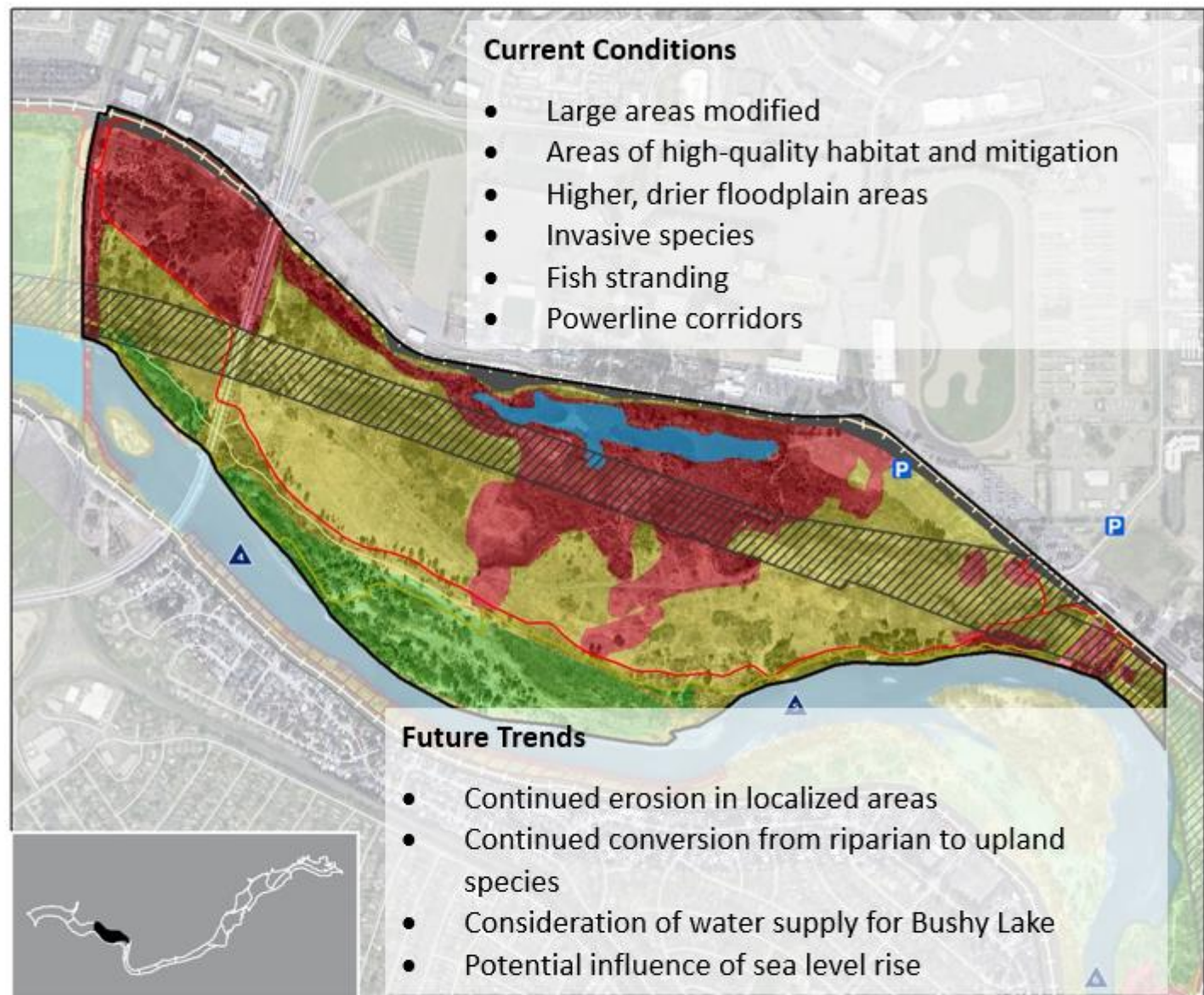


4. Invasive Species *

- Arundo Donax
- Pampas Grass
- Red Sesbania
- Open Water



* Present and Removed



Key Indicators

Feet 0 1,000 2,000

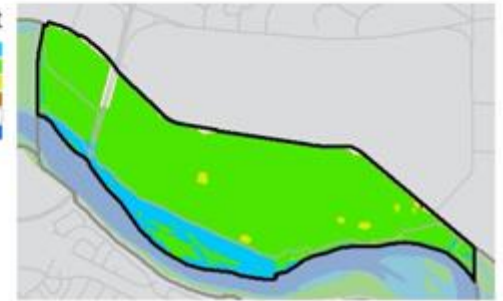
1. Land Use

Nature Study Area
Protected Area
Limited Recreation Area
Developed Recreation Area
Other
Open Water



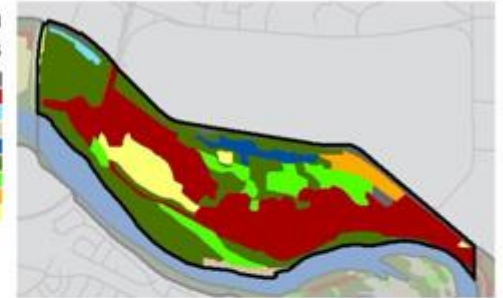
2. Inundation Extent

Recurrence Interval - 2 years
Recurrence Interval - 25-100 years
Recurrence Interval - 200 years
Upland/Behind Levee
No Data
Main Channel



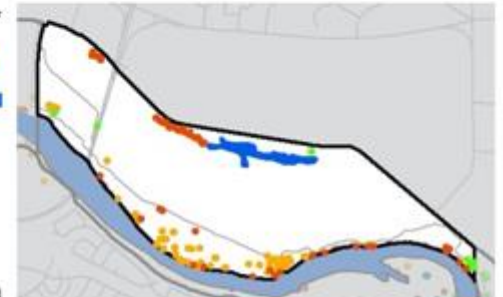
3. Vegetation Communities

Developed
Elderberry Savanna
Freshwater Emergent Wetland
Gravel Bar Chaparral
Open Water
Riparian Woodland/Forest
Riparian Scrub
Turf/Turf with Trees
Valley Foothill Grassland



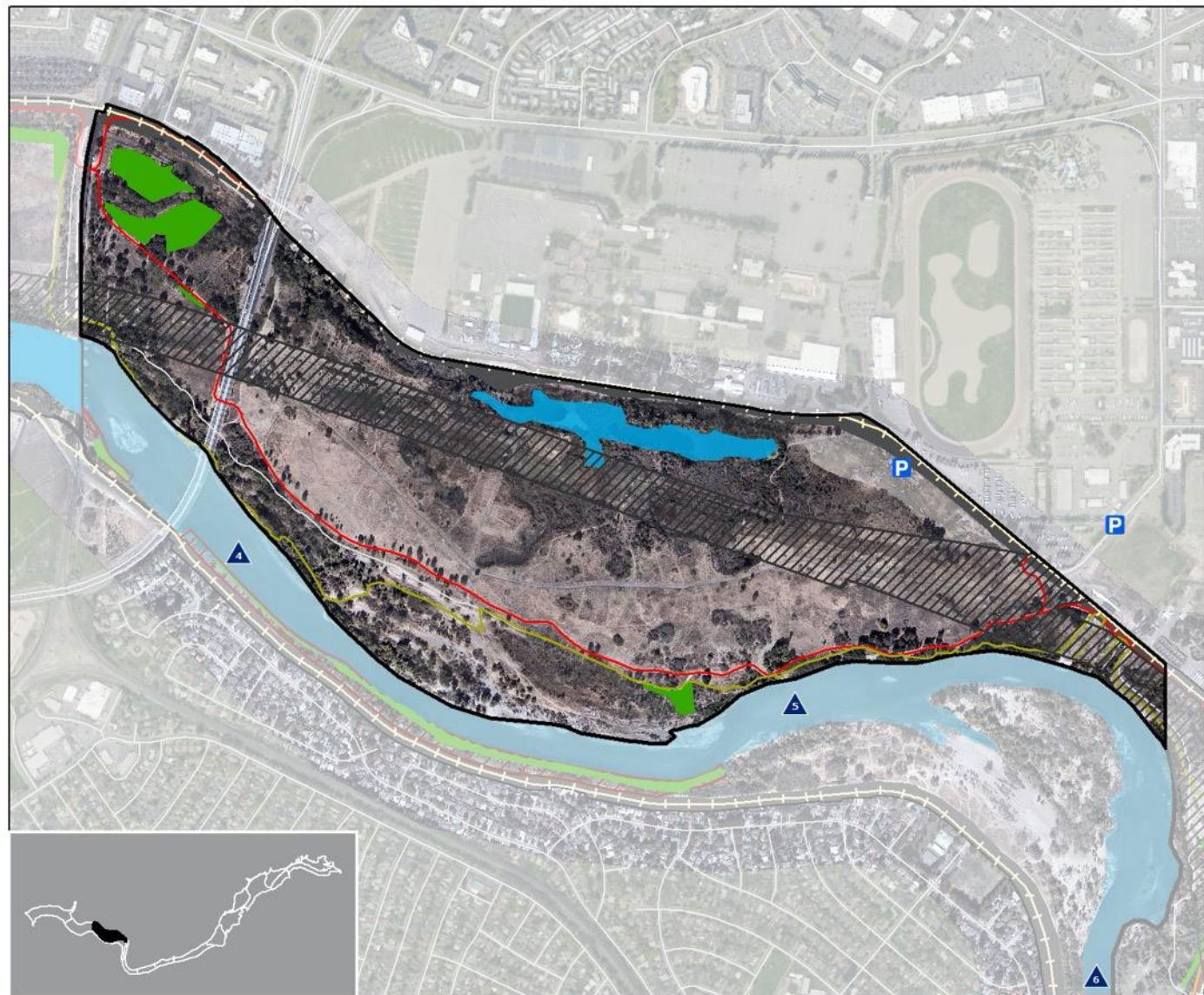
4. Invasive Species *

Arundo Donax
Pampas Grass
Red Sesbania
Open Water



* Present and Removed

Area Plan 3 Cal Expo Unaltered Areas



Feet 0 500 1,000

▲ River Mile
 P Parking
 — Bike Trail
 — Horse Trail
 — Levee
 ■ Developed Area
 ▨ Utility Easement
 ▨ Bank Protection
 ■ Preservation
 ■ Open Water

Area Plan 3

Cal Expo Preservation

Key Indicators

Feet 0 1,000 2,000 N

1. Land Use

■ Nature Study Area
 ■ Protected Area
 ■ Limited Recreation Area
 ■ Developed Recreation Area
 ■ Other
 ■ Open Water



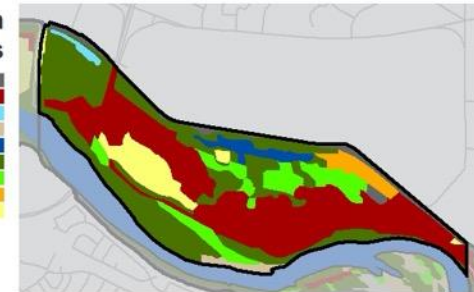
2. Inundation Extent

■ Recurrence Interval - 2 years
 ■ Recurrence Interval - 25-100 years
 ■ Recurrence Interval - 200 years
 ■ Upland/Behind Levee
 ■ No Data
 ■ Main Channel



3. Vegetation Communities

■ Developed
 ■ Elderberry Savanna
 ■ Freshwater Emergent Wetland
 ■ Gravel Bar Chaparral
 ■ Open Water
 ■ Riparian Woodland/Forest
 ■ Riparian Scrub
 ■ Turf/Turf with Trees
 ■ Valley Foothill Grassland

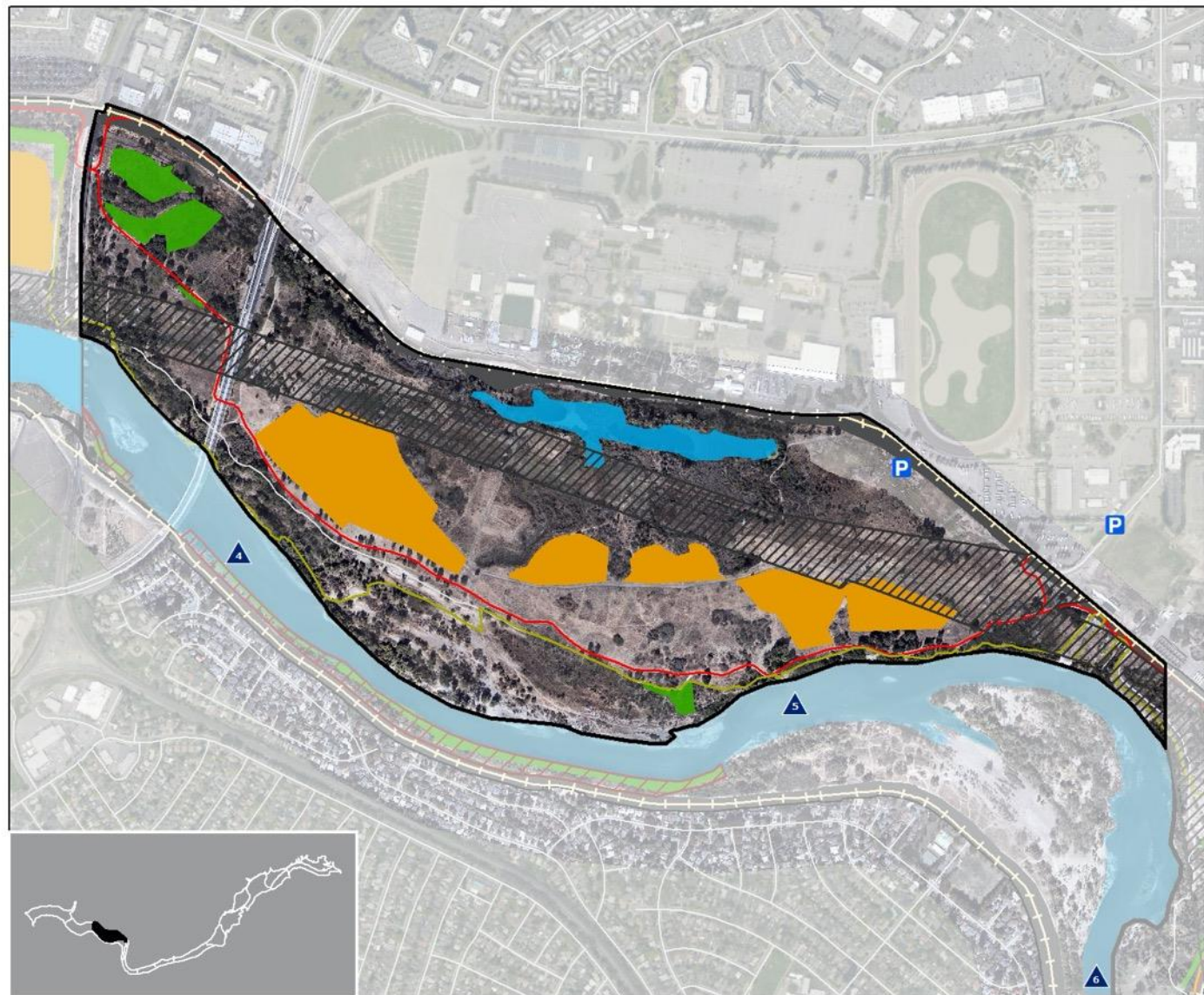


4. Invasive Species *

■ Arundo Donax
 ■ Pampas Grass
 ■ Red Sesbania
 ■ Open Water



* Present and Removed



Feet 0 500 1,000

▲ River Mile
 P Parking
 — Bike Trail
 — Horse Trail
 — Levee
 ■ Developed Area
 ▨ Utility Easement
 ▨ Bank Protection
 ■ Preservation
 ■ Rehabilitation

Area Plan 3

Cal Expo Rehabilitation

Key Indicators

Feet 0 1,000 2,000

1. Land Use

■ Nature Study Area
 ■ Protected Area
 ■ Limited Recreation Area
 ■ Developed Recreation Area
 ■ Other
 ■ Open Water



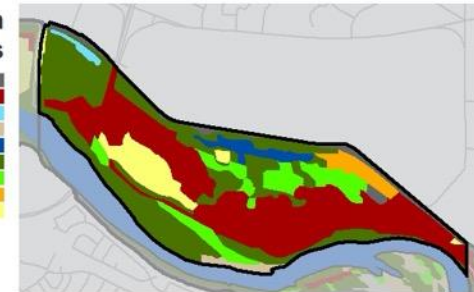
2. Inundation Extent

■ Recurrence Interval - 2 years
 ■ Recurrence Interval - 25-100 years
 ■ Recurrence Interval - 200 years
 ■ Upland/Behind Levee
 ■ No Data
 ■ Main Channel



3. Vegetation Communities

■ Developed
 ■ Elderberry Savanna
 ■ Freshwater Emergent Wetland
 ■ Gravel Bar Chaparral
 ■ Open Water
 ■ Riparian Woodland/Forest
 ■ Riparian Scrub
 ■ Turf/Turf with Trees
 ■ Valley Foothill Grassland

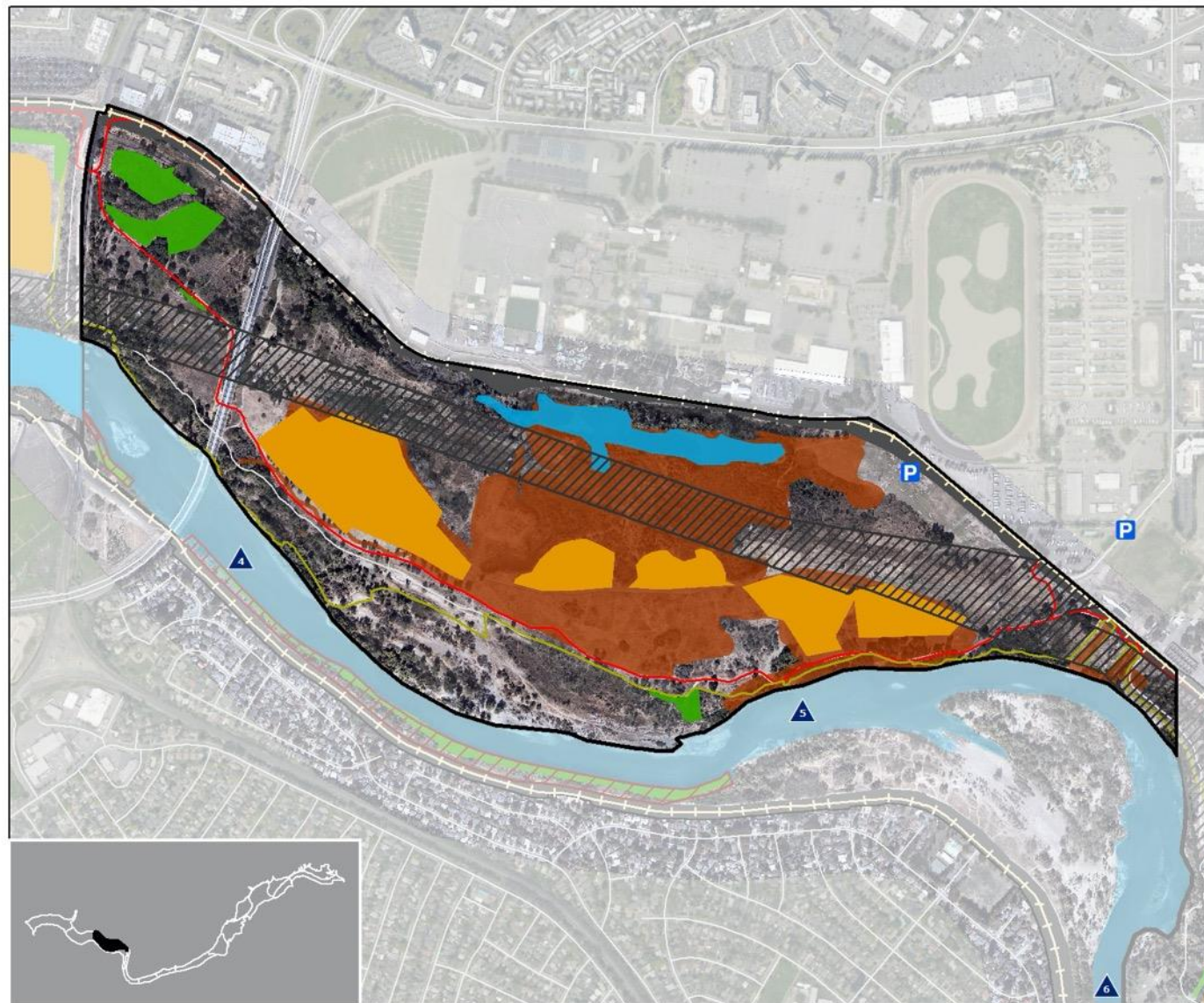


4. Invasive Species *

■ Arundo Donax
 ■ Pampas Grass
 ■ Red Sesbania
 ■ Open Water



* Present and Removed



Feet 0 500 1,000

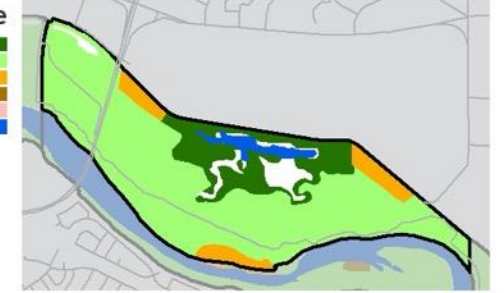
- | | | | |
|------------|-------------|------------------|----------------|
| River Mile | Bike Trail | Developed Area | Preservation |
| Parking | Horse Trail | Utility Easement | Rehabilitation |
| | Levee | Bank Protection | Naturalization |

Key Indicators

Feet 0 1,000 2,000

1. Land Use

- Nature Study Area
- Protected Area
- Limited Recreation Area
- Developed Recreation Area
- Other
- Open Water



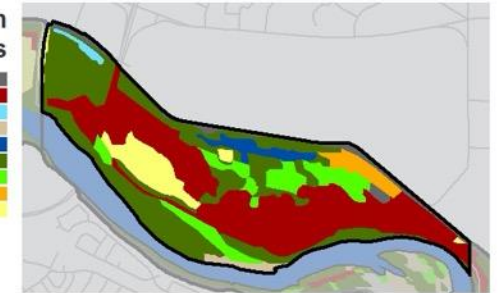
2. Inundation Extent

- Recurrence Interval - 2 years
- Recurrence Interval - 25-100 years
- Recurrence Interval - 200 years
- Upland/Behind Levee
- No Data
- Main Channel



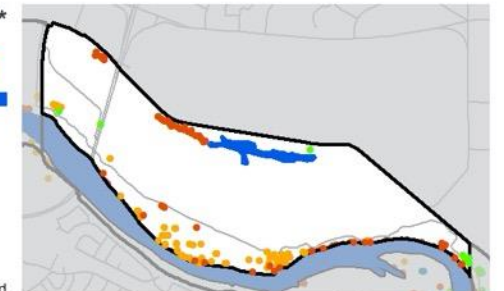
3. Vegetation Communities

- Developed
- Elderberry Savanna
- Freshwater Emergent Wetland
- Gravel Bar Chaparral
- Open Water
- Riparian Woodland/Forest
- Riparian Scrub
- Turf/Turf with Trees
- Valley Foothill Grassland

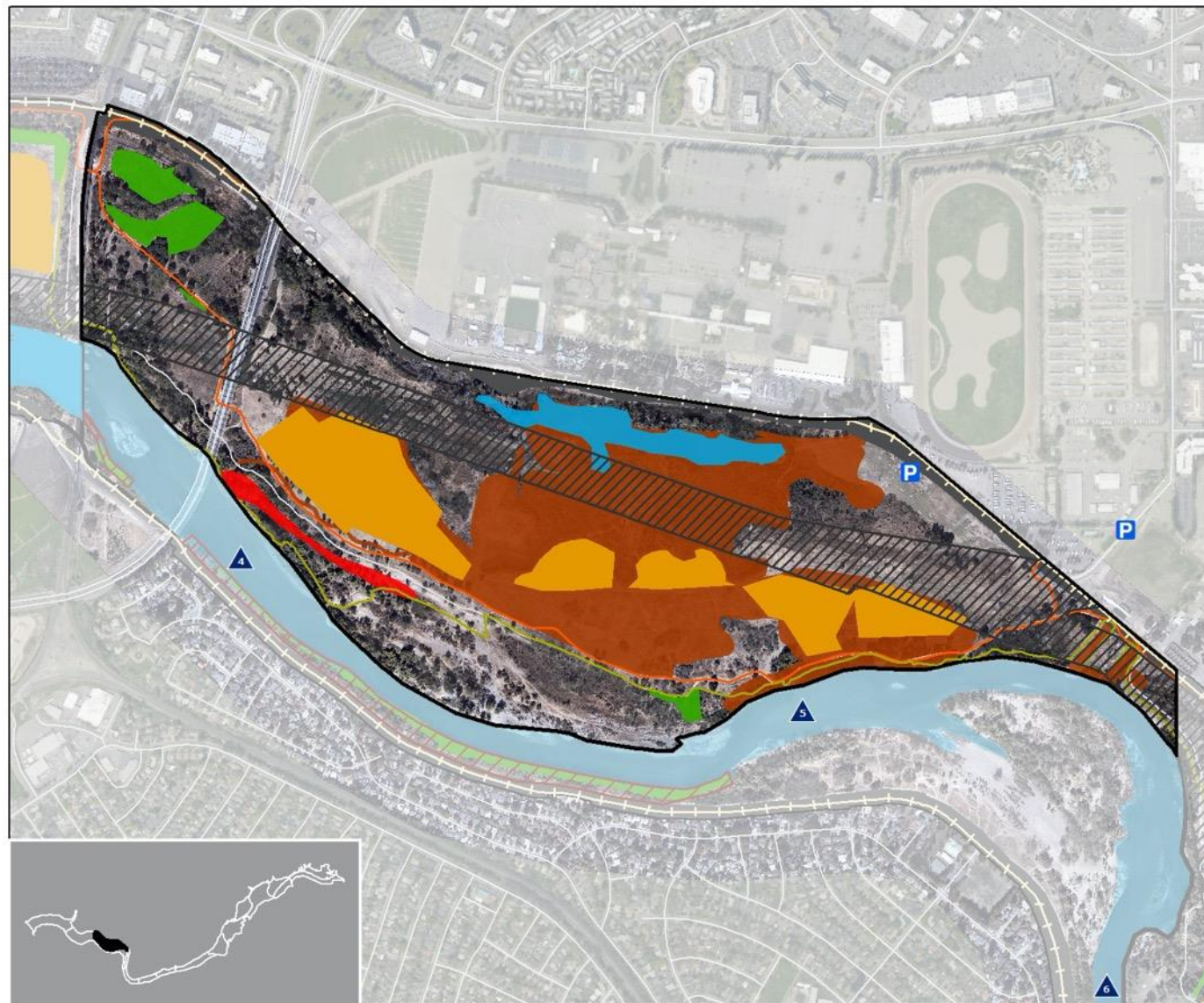


4. Invasive Species *

- Arundo Donax
- Pampas Grass
- Red Sesbania
- Open Water



* Present and Removed



Feet 0 500 1,000

- | | | | |
|--------------|---------------|--------------------|------------------|
| ▲ River Mile | — Bike Trail | ■ Developed Area | ■ Preservation |
| P Parking | — Horse Trail | ▨ Utility Easement | ■ Rehabilitation |
| | — Levee | ▨ Bank Protection | ■ Naturalization |
| | | | ■ Enhancement |

Area Plan 3

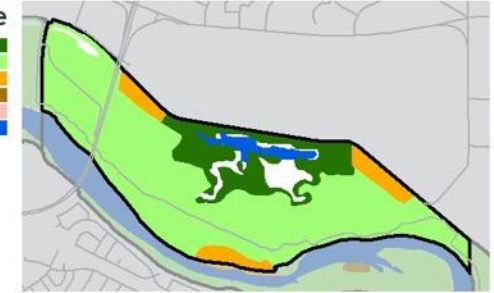
Cal Expo Enhancement

Key Indicators

Feet 0 1,000 2,000

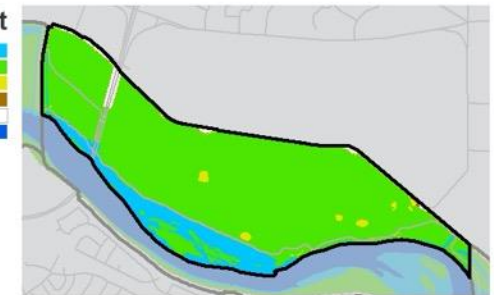
1. Land Use

- Nature Study Area
- Protected Area
- Limited Recreation Area
- Developed Recreation Area
- Other
- Open Water



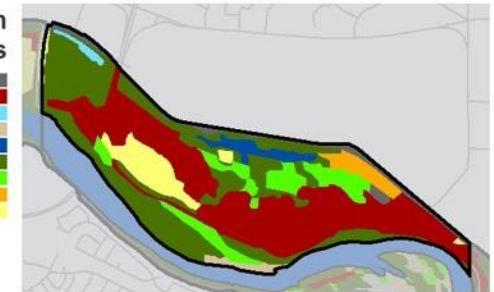
2. Inundation Extent

- Recurrence Interval - 2 years
- Recurrence Interval - 25-100 years
- Recurrence Interval - 200 years
- Upland/Behind Levee
- No Data
- Main Channel



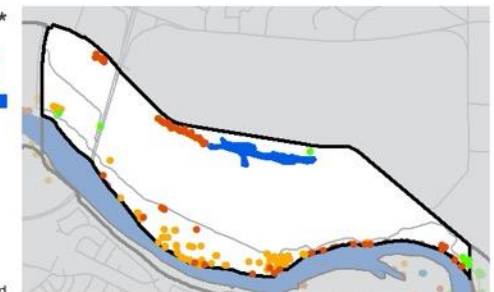
3. Vegetation Communities

- Developed
- Elderberry Savanna
- Freshwater Emergent Wetland
- Gravel Bar Chaparral
- Open Water
- Riparian Woodland/Forest
- Riparian Scrub
- Turf/Turf with Trees
- Valley Foothill Grassland



4. Invasive Species *

- Arundo Donax
- Pampas Grass
- Red Sesbania
- Open Water



* Present and Removed



Next Steps

American River Parkway NRMP Status Update

Lower American River Conservancy Program