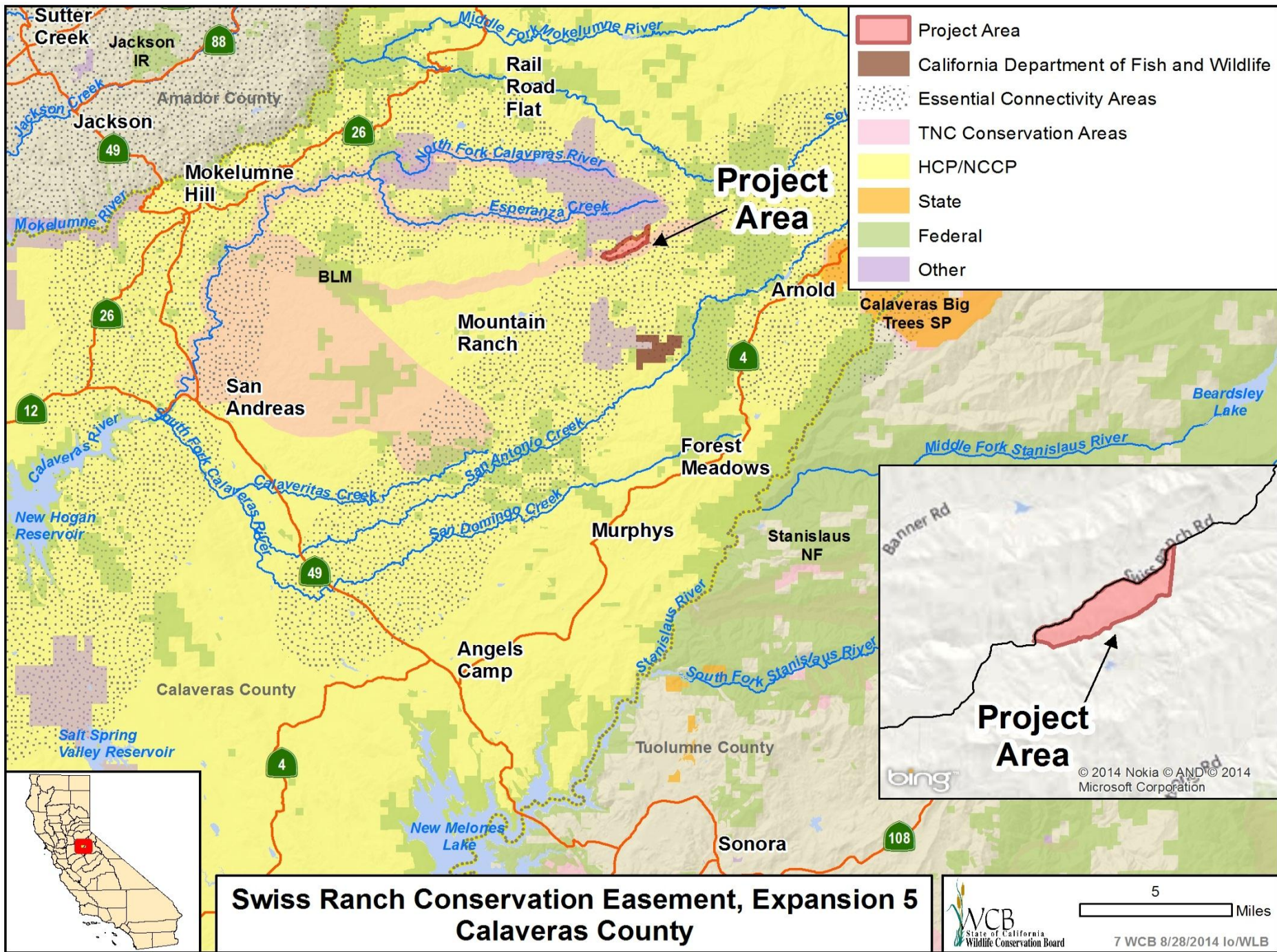


August 28, 2014
Wildlife Conservation Board Meeting
10:30 AM, State Capitol, Room 112
Sacramento, California 95814





#7. Swiss Ranch Conservation Easement, Expansion 5



- The Easement is Mountainous and covered with mixed conifer tree stands that are interspersed with oak woodlands

#7. Swiss Ranch Conservation Easement, Expansion 5

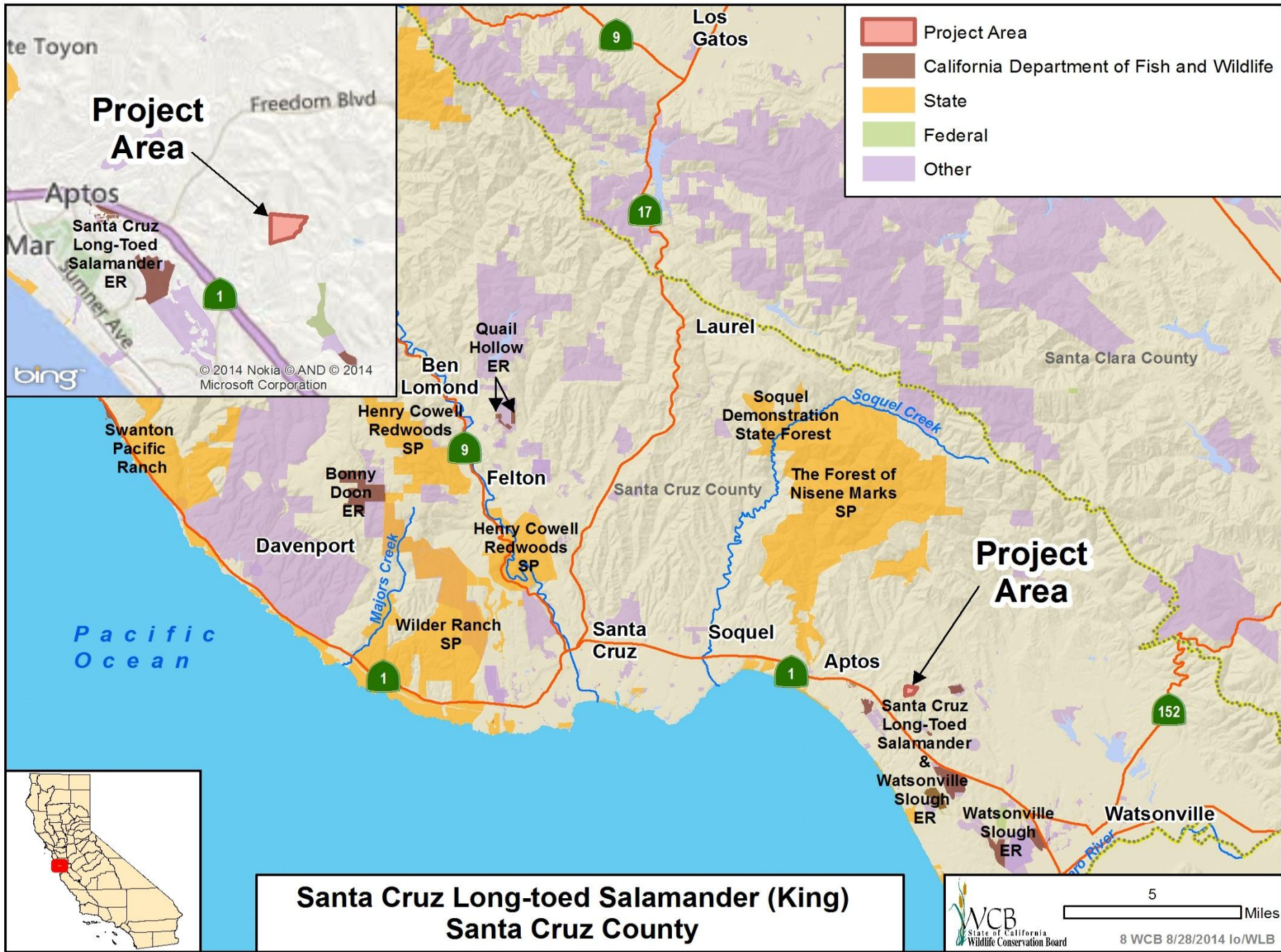


- The property provides habitat for the migratory Rail Road Flat deer herd

#7. Swiss Ranch Conservation Easement, Expansion 5



- Open space area located in the north central portion of the property, which offers views of the Sierras



#8. Santa Cruz Long-toed Salamander (King)



- Santa Cruz long toed salamander

#8. Santa Cruz Long-toed Salamander (King)



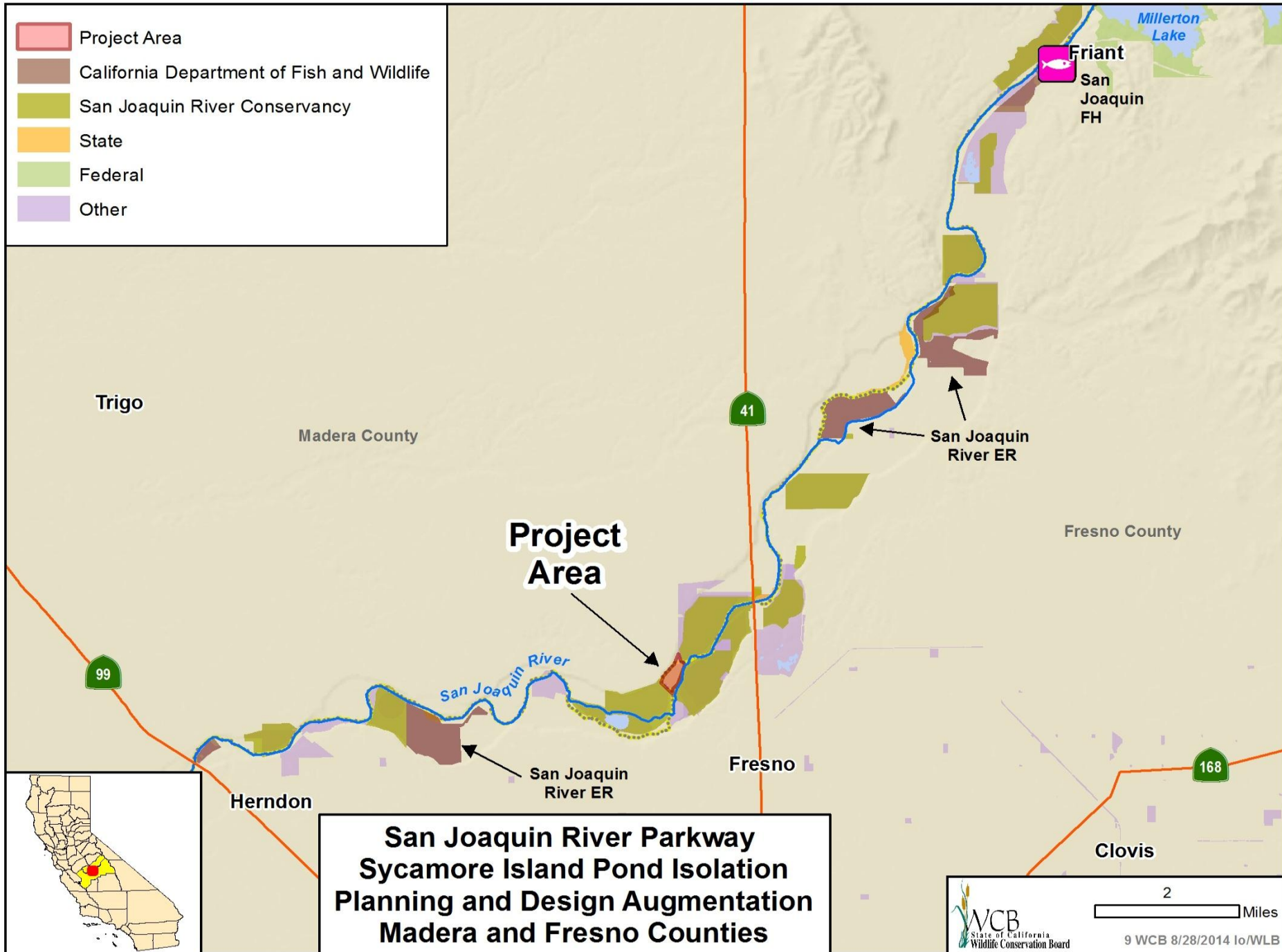
- Interior view of property

#8. Santa Cruz Long-toed Salamander (King)



- Grasslands on property

- Project Area
- California Department of Fish and Wildlife
- San Joaquin River Conservancy
- State
- Federal
- Other



#9. San Joaquin River Parkway, Sycamore Island Pond Isolation, Planning and Design, Augmentation



■ Project location

#9. San Joaquin River Parkway, Sycamore Island Pond Isolation, Planning and Design, Augmentation



- Looking at the levee break from the pond in the river

#9. San Joaquin River Parkway, Sycamore Island Pond Isolation, Planning and Design, Augmentation



- Looking down at the levee break from the west side

#9. San Joaquin River Parkway, Sycamore Island Pond Isolation, Planning and Design, Augmentation



- San Joaquin River at levee break

#9. San Joaquin River Parkway, Sycamore Island Pond Isolation, Planning and Design, Augmentation









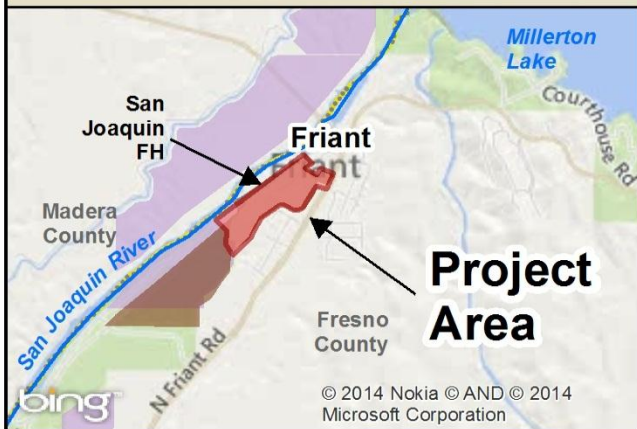
- Looking west across the pond to Sycamore Island

#9. San Joaquin River Parkway, Sycamore Island Pond Isolation, Planning and Design, Augmentation

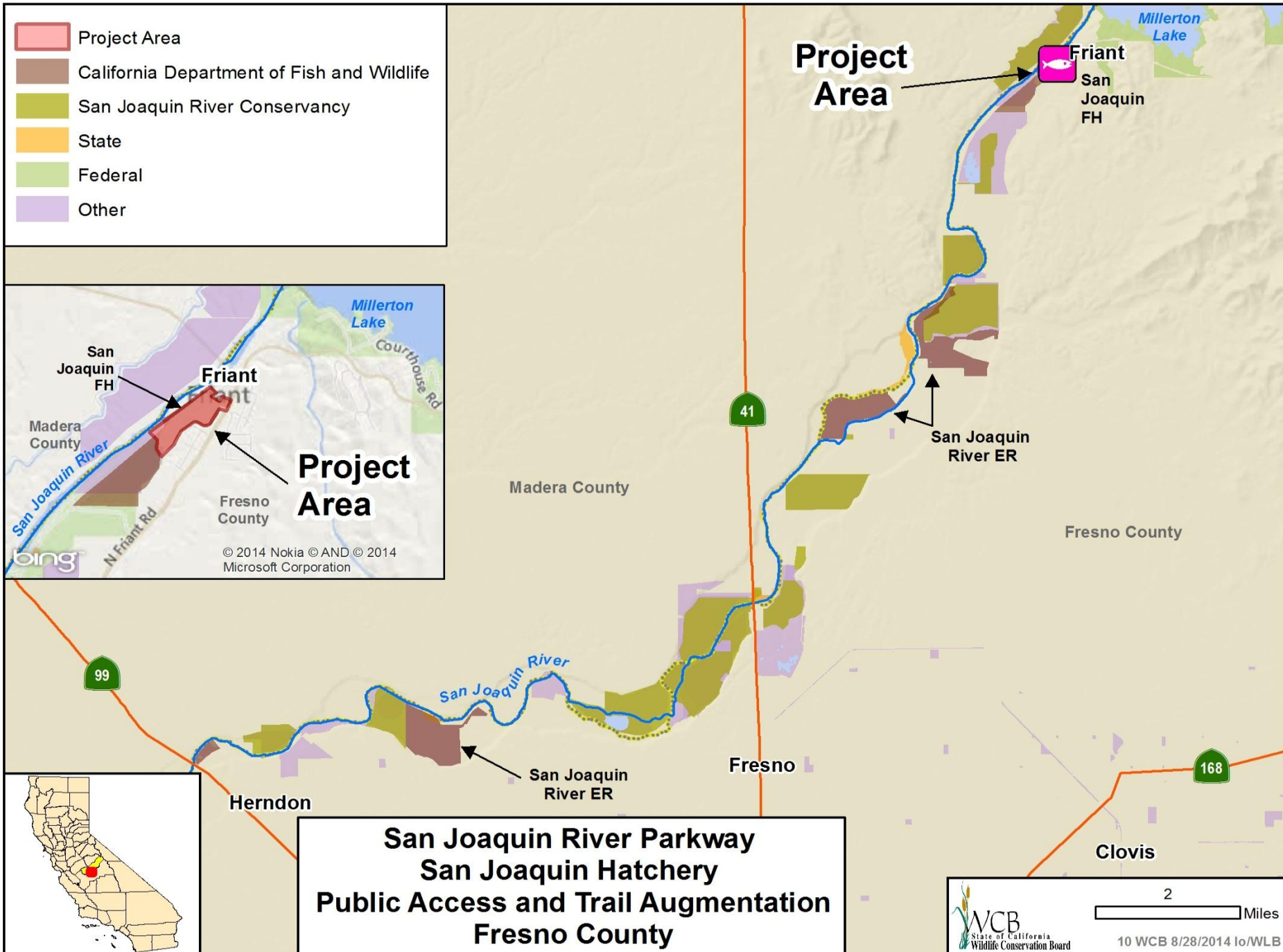


- Aerial view of site

-  Project Area
-  California Department of Fish and Wildlife
-  San Joaquin River Conservancy
-  State
-  Federal
-  Other



San Joaquin River Parkway San Joaquin Hatchery Public Access and Trail Augmentation Fresno County

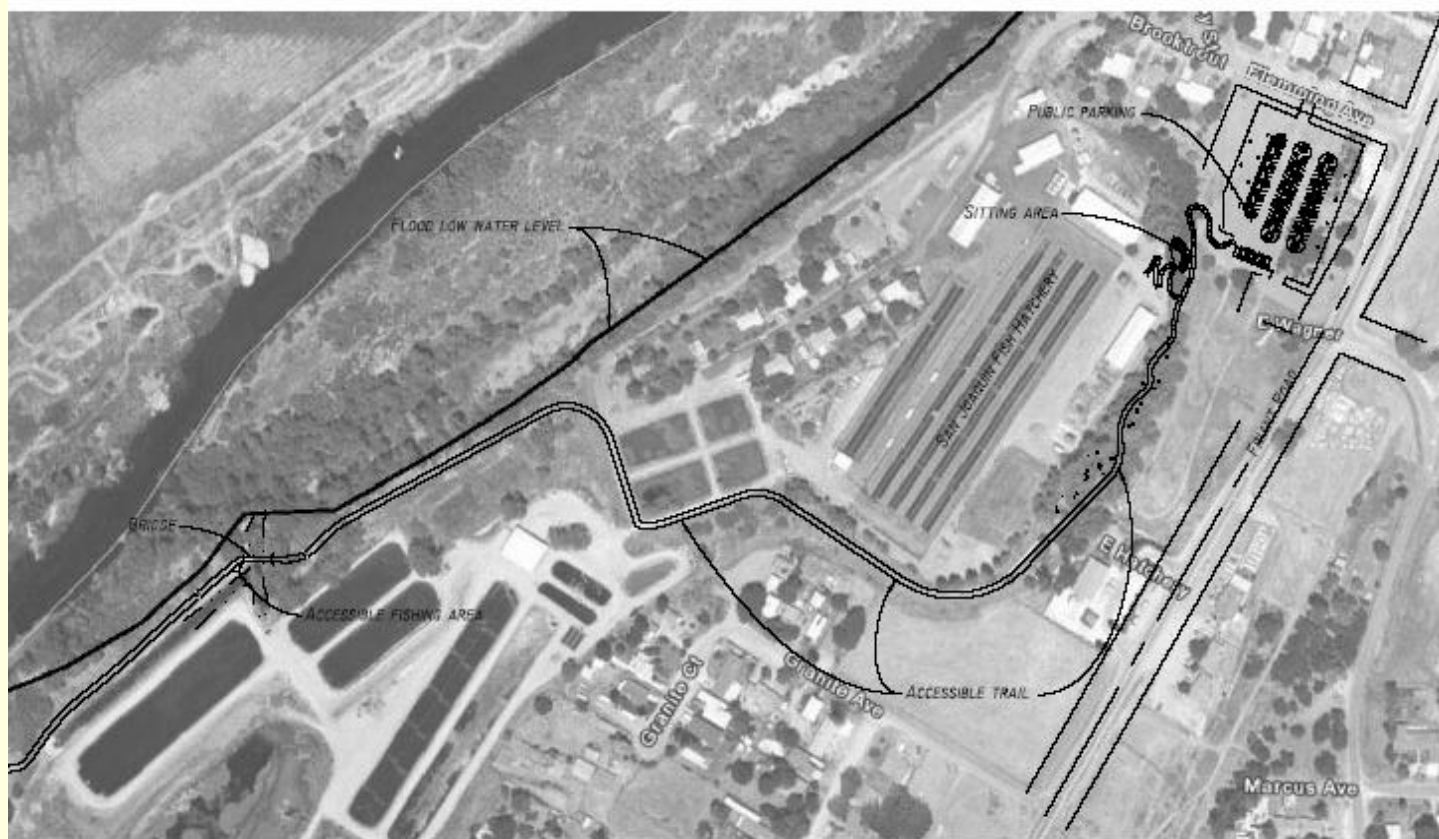


#10. San Joaquin River Parkway, San Joaquin Hatchery Public Access and Trail, Augmentation



- Overview of the proposed project

#10. San Joaquin River Parkway, San Joaquin Hatchery Public Access and Trail, Augmentation



- Site plan overview

#10. San Joaquin River Parkway, San Joaquin Hatchery Public Access and Trail, Augmentation



- Location of proposed parking area looking southwest towards Friant Road

#10. San Joaquin River Parkway, San Joaquin Hatchery Public Access and Trail, Augmentation



- Proposed location for stairs and amphitheater style seating

#10. San Joaquin River Parkway, San Joaquin Hatchery Public Access and Trail, Augmentation

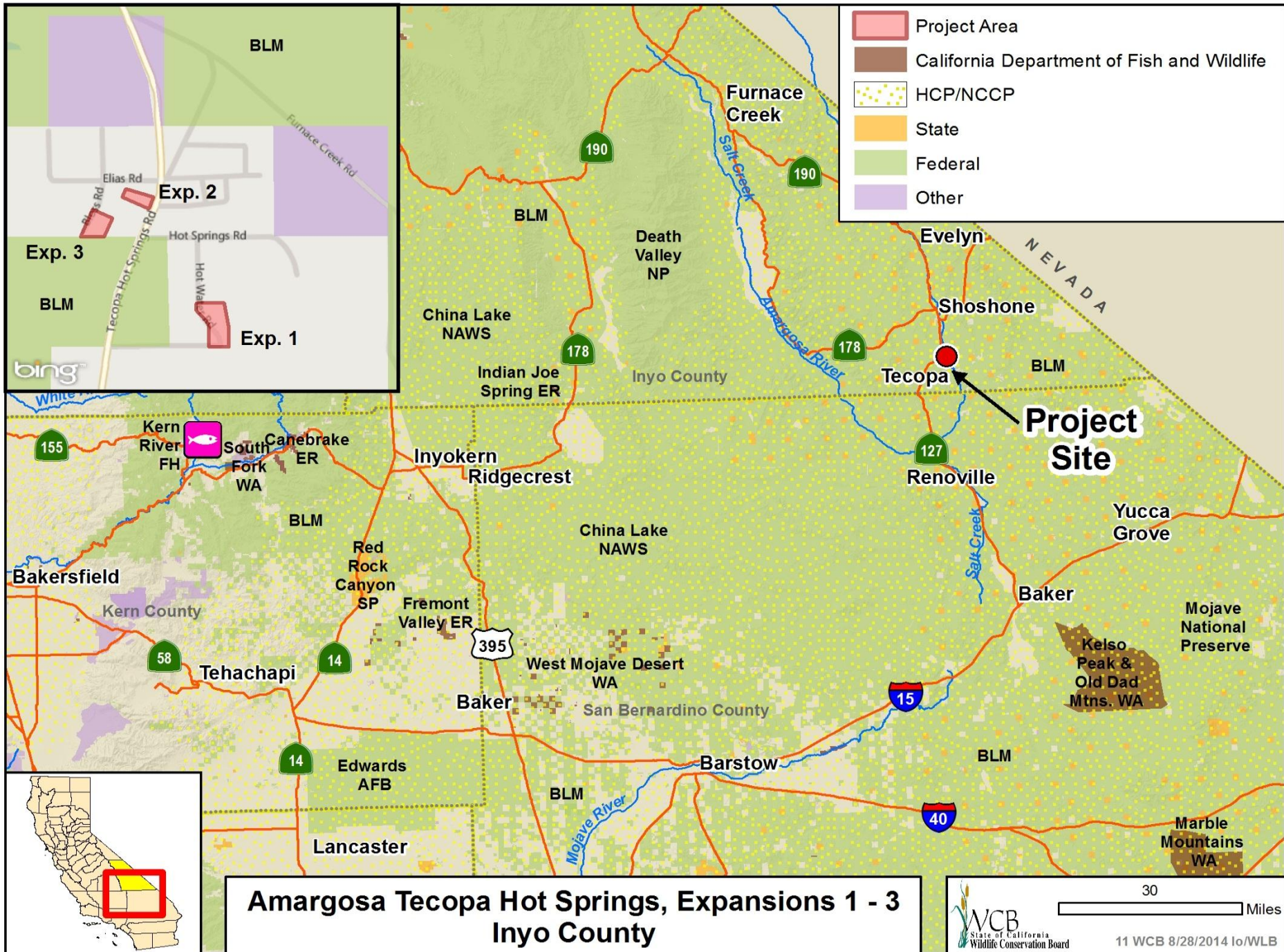


- Proposed bridge location

#10. San Joaquin River Parkway, San Joaquin Hatchery Public Access and Trail, Augmentation



- Proposed canoe launching area



#11. Amargosa - Tecopa Hot Springs, Expansion 1-3



■ Amargosa Niterwart

#11. Amargosa - Tecopa Hot Springs, Expansion 1-3



■ Amargosa Vole

#11. Amargosa - Tecopa Hot Springs, Expansion 1-3

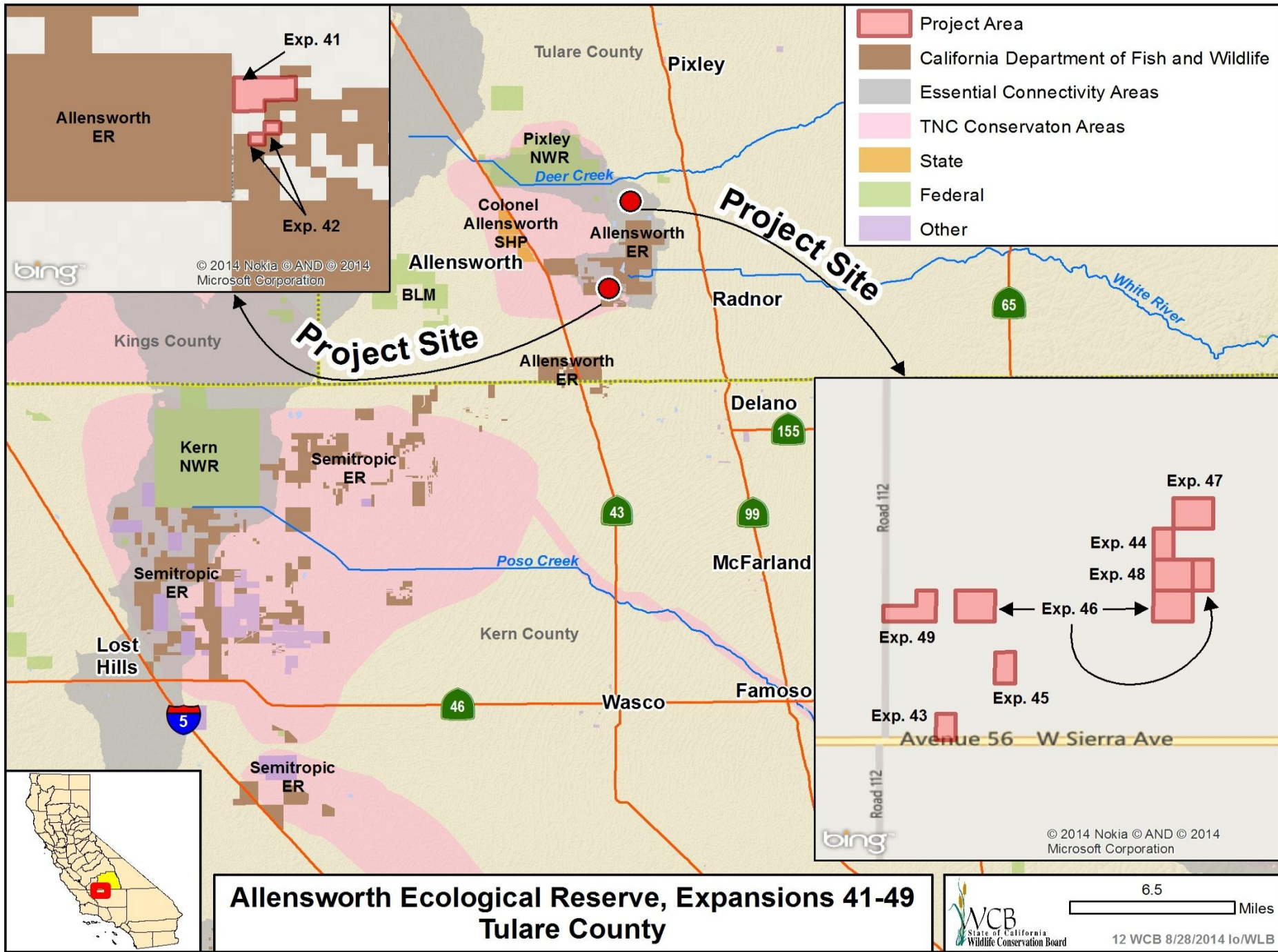


- Catalano property

#11. Amargosa - Tecopa Hot Springs, Expansion 1-3



- Lagumina Property



#12. Allensworth Ecological Reserve, Expansion 41 - 49



- San Joaquin kit fox

#12. Allensworth Ecological Reserve, Expansion 41 - 49



■ Tipton Kangaroo
Rat

#12. Allensworth Ecological Reserve, Expansion 41 - 49



- Blunt-Nosed Leopard Lizard

#12. Allensworth Ecological Reserve, Expansion 41 - 49

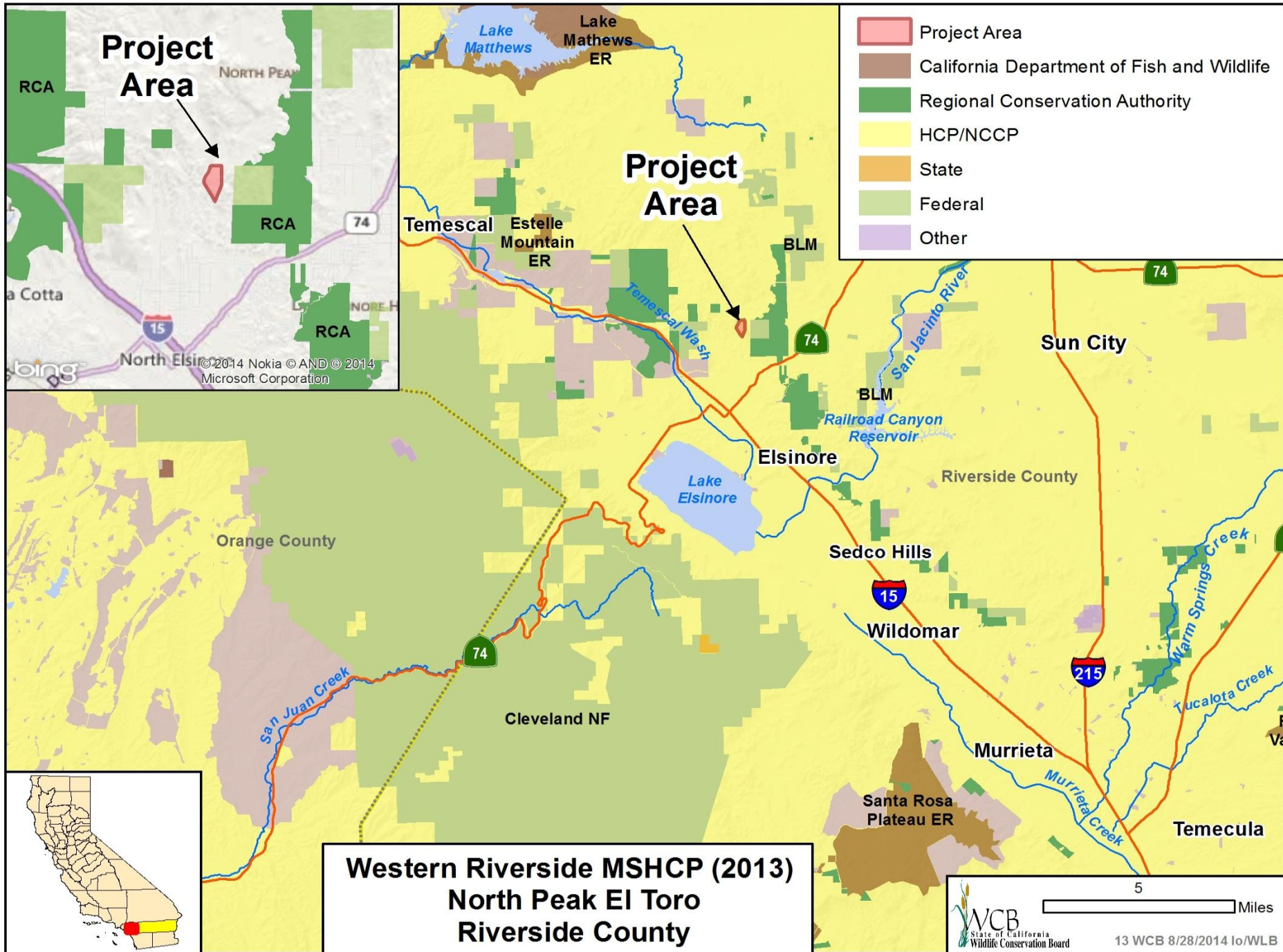


- View looking south

#12. Allensworth Ecological Reserve, Expansion 41 - 49



■ View looking west



#13. Western Riverside MSHCP (2013) – North Peak El Toro



- View of the El Toro property located on El Toro Road in Elsinore

#13. Western Riverside MSHCP (2013) – North Peak El Toro



- The El Toro property is located on the northern portion of the Western/Core Linkage habitat area. This area contributes to species that rely on coastal sage scrub, grasslands and clay soil areas

#13. Western Riverside MSHCP (2013) – North Peak El Toro



- The property provides habitat for Federal/State threatened Species such as the coastal California gnatcatcher and least Bell's vireo

#13. Western Riverside MSHCP (2013) – North Peak El Toro



- The Property as part of the Western/Core Linkage area provides ecosystem responses to climate change by incorporating elevational gradients

#14. Western Riverside MSHCP (2013) - Patterson



- The Property serves as an important habitat linkage area that serves to as habitat for several federally endangered species

#14. Western Riverside MSHCP (2013) - Patterson



- The Property is typical of the rolling mountainous topography of properties located within the Western Core/Linkage Habitat Area

#14. Western Riverside MSHCP (2013) - Patterson

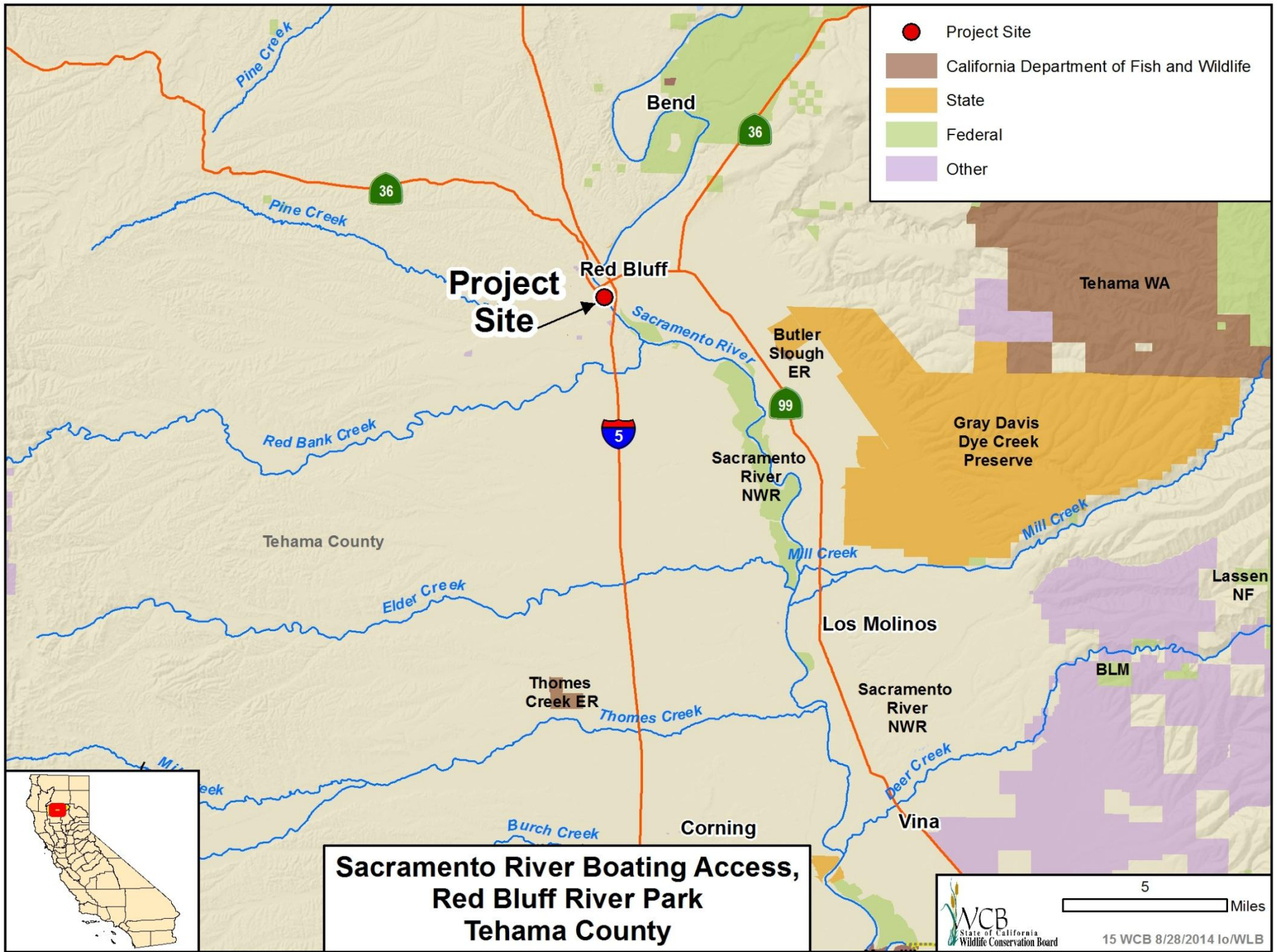


- View of encroaching development from property

#14. Western Riverside MSHCP (2013) - Patterson



- View of plant life on property during the Spring



#15. Sacramento River Boating Access, Red Bluff River Park



- Lake Red Bluff, July 2011, showing location of boat launch facility and Red Bluff Diversion Dam prior to decommission of the dam

#15. Sacramento River Boating Access, Red Bluff River Park



- Red Bluff River Park boat launch facility pictured in July 2011 prior to de-commission of the Red Bluff Diversion Dam.

#15. Sacramento River Boating Access, Red Bluff River Park



- Red Bluff River Park boat launch pictured in 2012 showing the new location of the river's edge, approximately 300 feet east

#15. Sacramento River Boating Access, Red Bluff River Park



- Current sign posted at the boat launch warning boaters that the area below the boat ramp is not maintained and they launch at their own risk

#15. Sacramento River Boating Access, Red Bluff River Park



- Current view of the boat ramp

- Preliminary design of new boat launch facility



#15. Sacramento River Boating Access, Red Bluff River Park

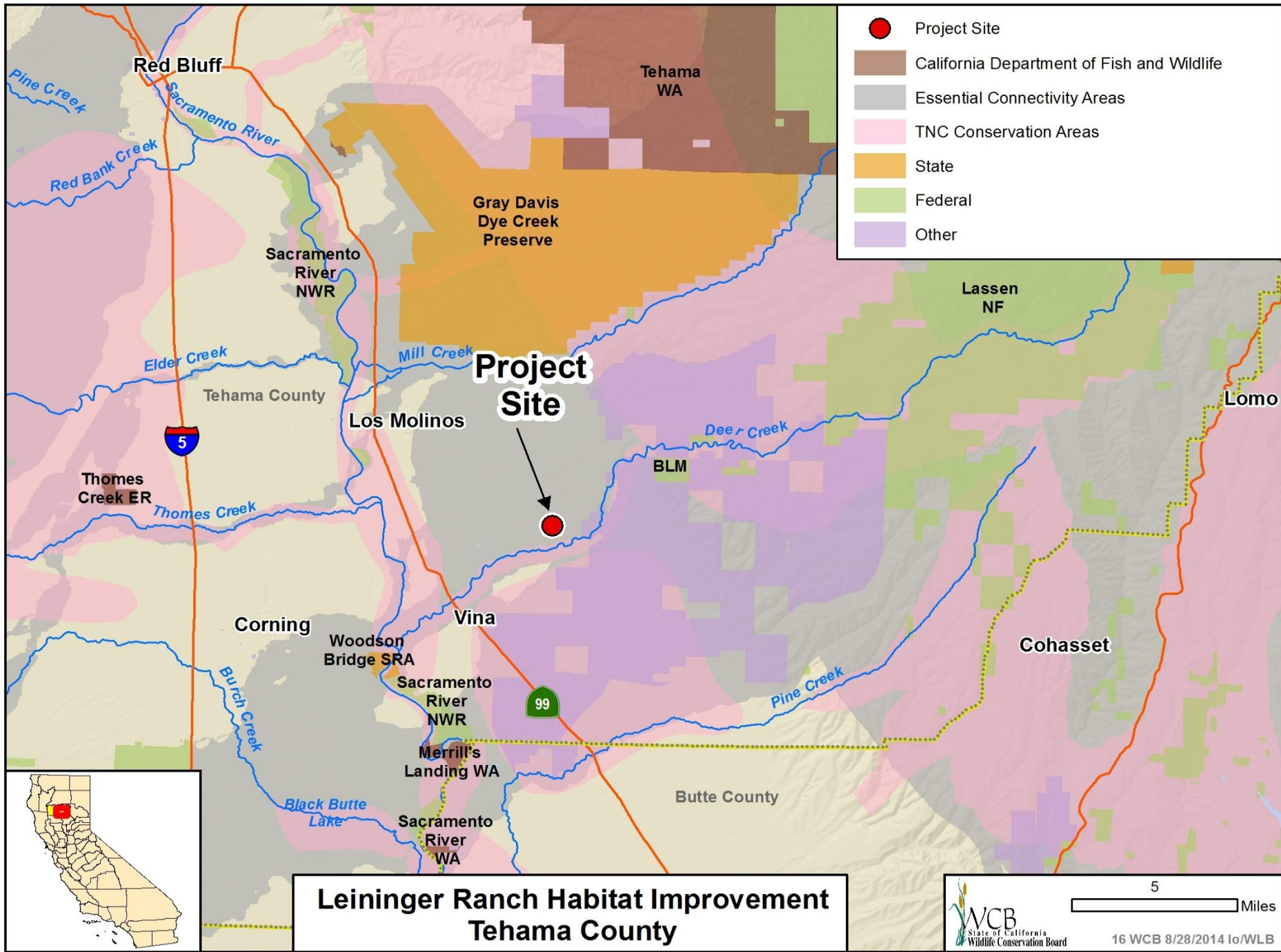


- Existing restroom proposed to be demolished

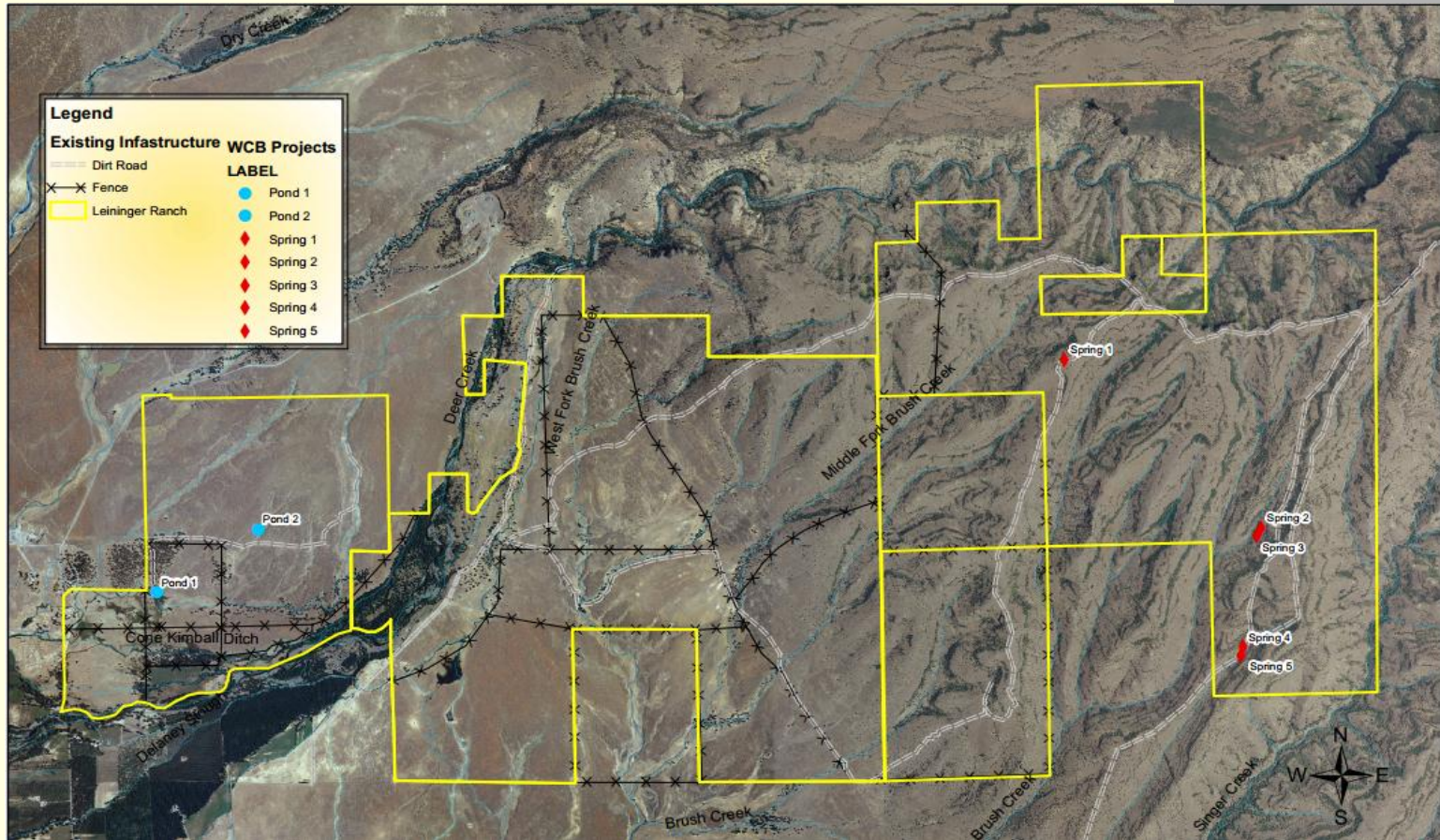
#15. Sacramento River Boating Access, Red Bluff River Park



- Area shown is the location of the proposed new restroom and picnic pavilion. The boat ramp will be located to the left of the trees on the gravel bar



#16. Leininger Ranch Habitat Improvement



- Leininger Ranch project sites

#16. Leininger Ranch Habitat Improvement



Photo courtesy of Tehama County RCD

- Proposed upland pond site

#16. Leininger Ranch Habitat Improvement



- Existing pond - reinforcements

#16. Leininger Ranch Habitat Improvement



Photo courtesy of Tehama County RCD

- Lowland pond site – pond repair

#16. Leininger Ranch Habitat Improvement



Photo courtesy of Tehama County RCD

- General location of natural springs

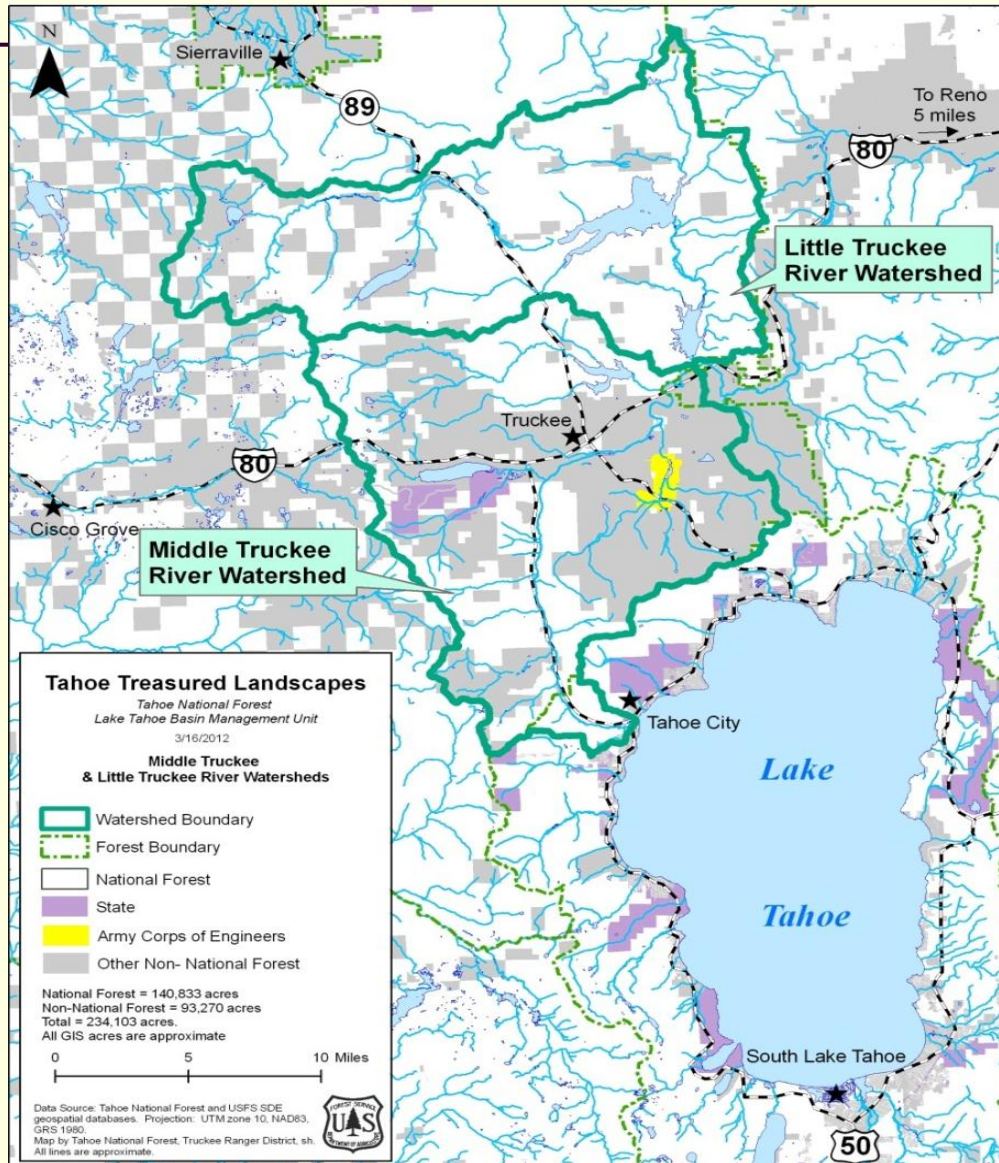
#16. Leininger Ranch Habitat Improvement



Photo courtesy of Tehama County RCD

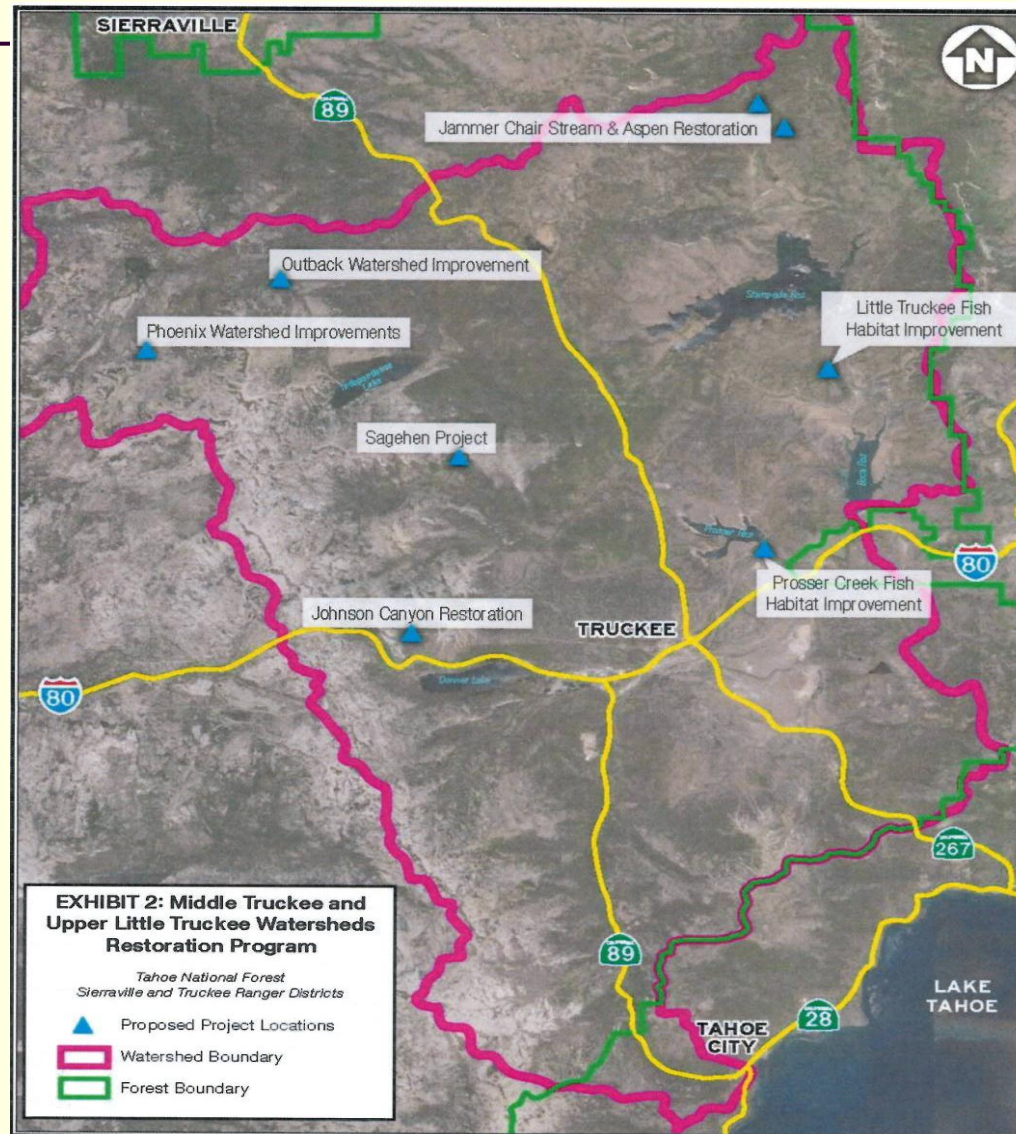
- Natural springs site improvement

#17. Truckee River Watershed Forest Enhancement



■ Truckee River Watershed

#17. Truckee River Watershed Forest Enhancement



- Truckee River Watershed and project overview

#17. Truckee River Watershed Forest Enhancement



- Forest with high fuel loads

#17. Truckee River Watershed Forest Enhancement



- Previously treated portion of the Sagehen Forest

#17. Truckee River Watershed Forest Enhancement



- View of Prosser Creek

#17. Truckee River Watershed Forest Enhancement



■ Johnson Canyon

#17. Truckee River Watershed Forest Enhancement

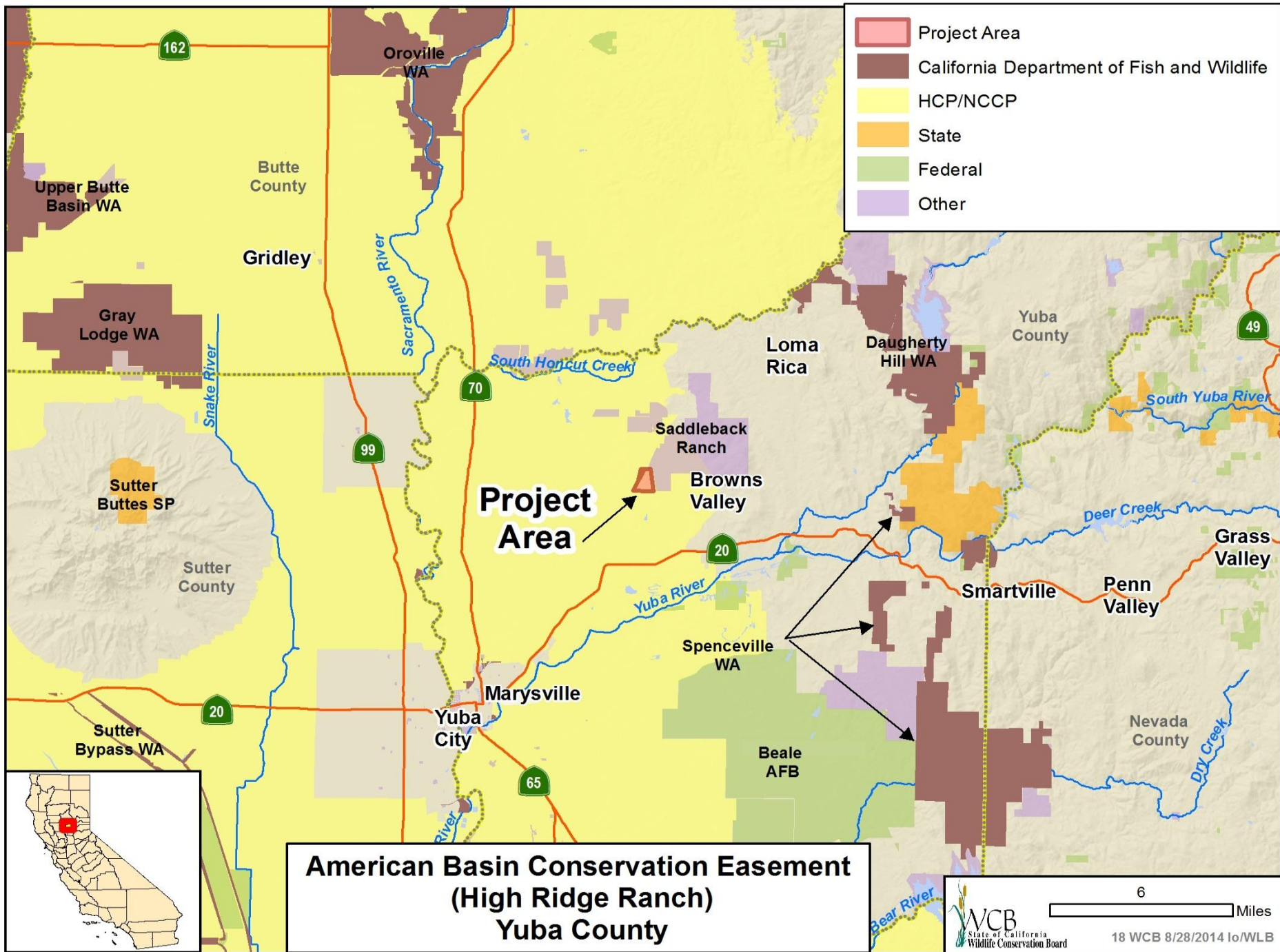


- Fen with encroaching pines

#17. Truckee River Watershed Forest Enhancement



■ Little Truckee River



#18. American Basin Conservation Easement (High Ridge Ranch)



- Aerial of property looking south with surrounding housing tracts

#18. American Basin Conservation Easement (High Ridge Ranch)



- Looking northwest over the property

#18. American Basin Conservation Easement (High Ridge Ranch)



- Closer look at one of the irrigated fields

#18. American Basin Conservation Easement (High Ridge Ranch)



Photo courtesy of CWA

- Tricolor blackbird
– a breeding
riparian songbird

#18. American Basin Conservation Easement (High Ridge Ranch)



■ Giant Garter
Snake

Photo courtesy of CWA

#18. American Basin Conservation Easement (High Ridge Ranch)



Photo courtesy of CWA

- Swainson's Hawk

#18. American Basin Conservation Easement (High Ridge Ranch)

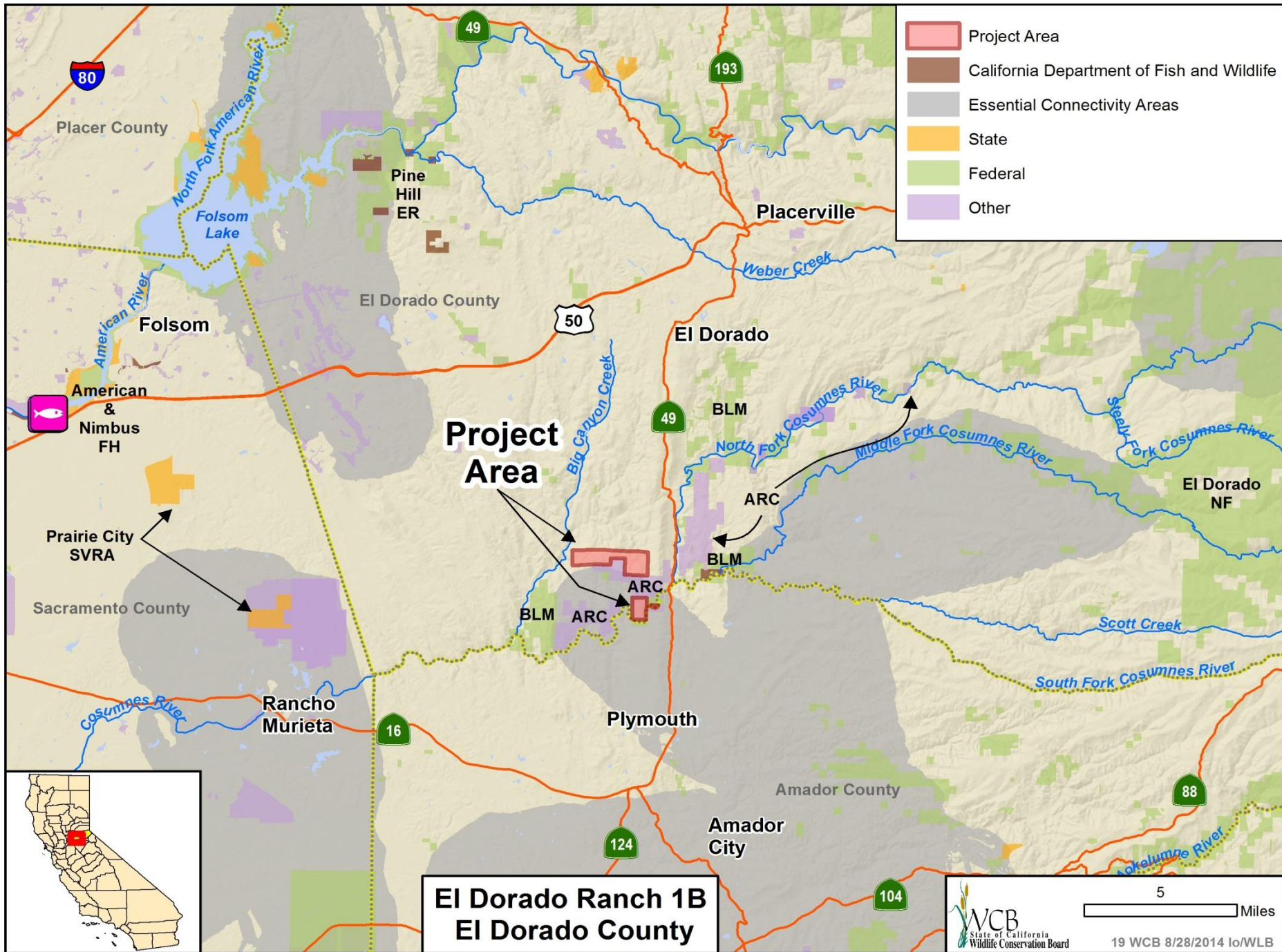


- Looking North over the property

#18. American Basin Conservation Easement (High Ridge Ranch)



- Looking East over the property



#19. El Dorado Ranch Phase 1B



- The property was also identified by the County of El Dorado's Oak Woodlands Management Plan as a priority conservation area. El Dorado Ranch contains the largest contiguous north-south corridor of blue oak woodlands in El Dorado County.

#19. El Dorado Ranch Phase 1B



- A scenic view overlooking the Cosumnes River that will be enjoyed by the public

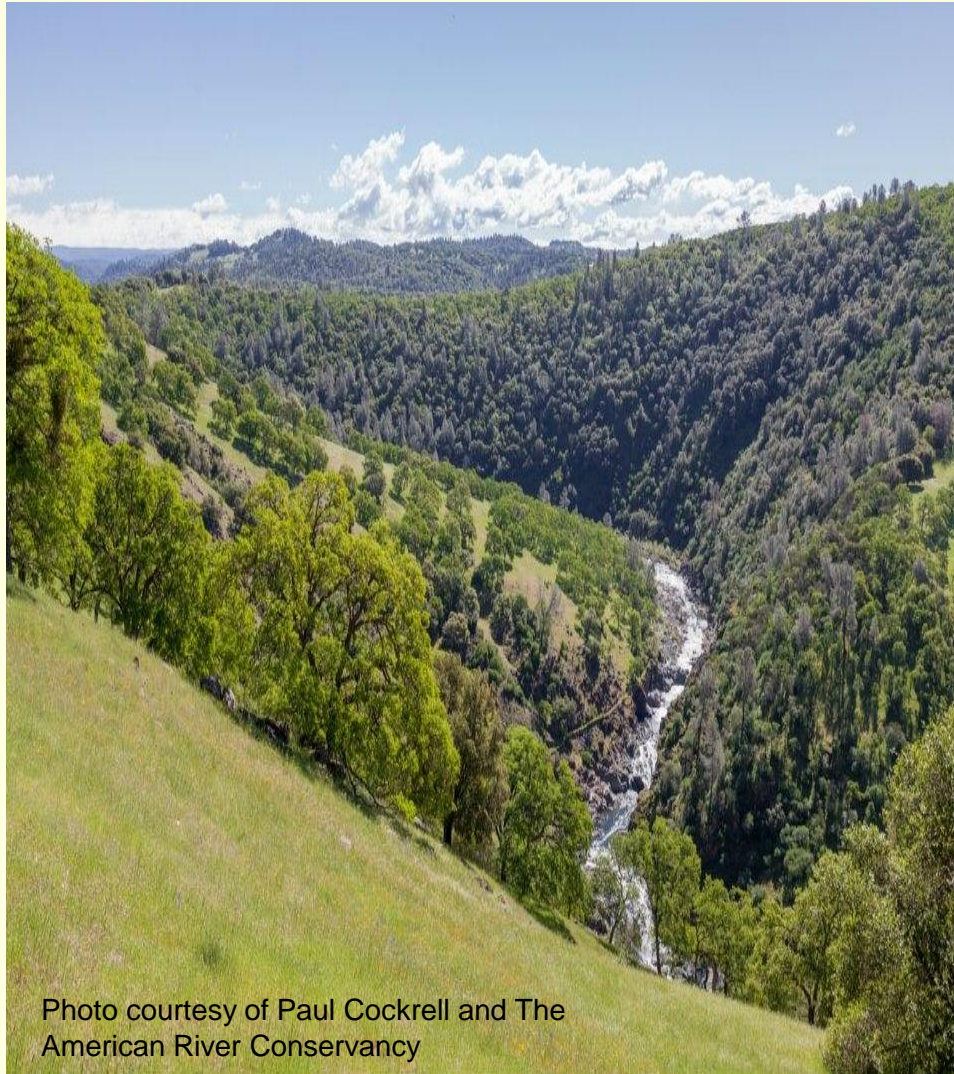
#19. El Dorado Ranch Phase 1B



Photo courtesy of The American River Conservancy

- Property contains river frontage along the Main Fork of the Cosumnes River

#19. El Dorado Ranch Phase 1B

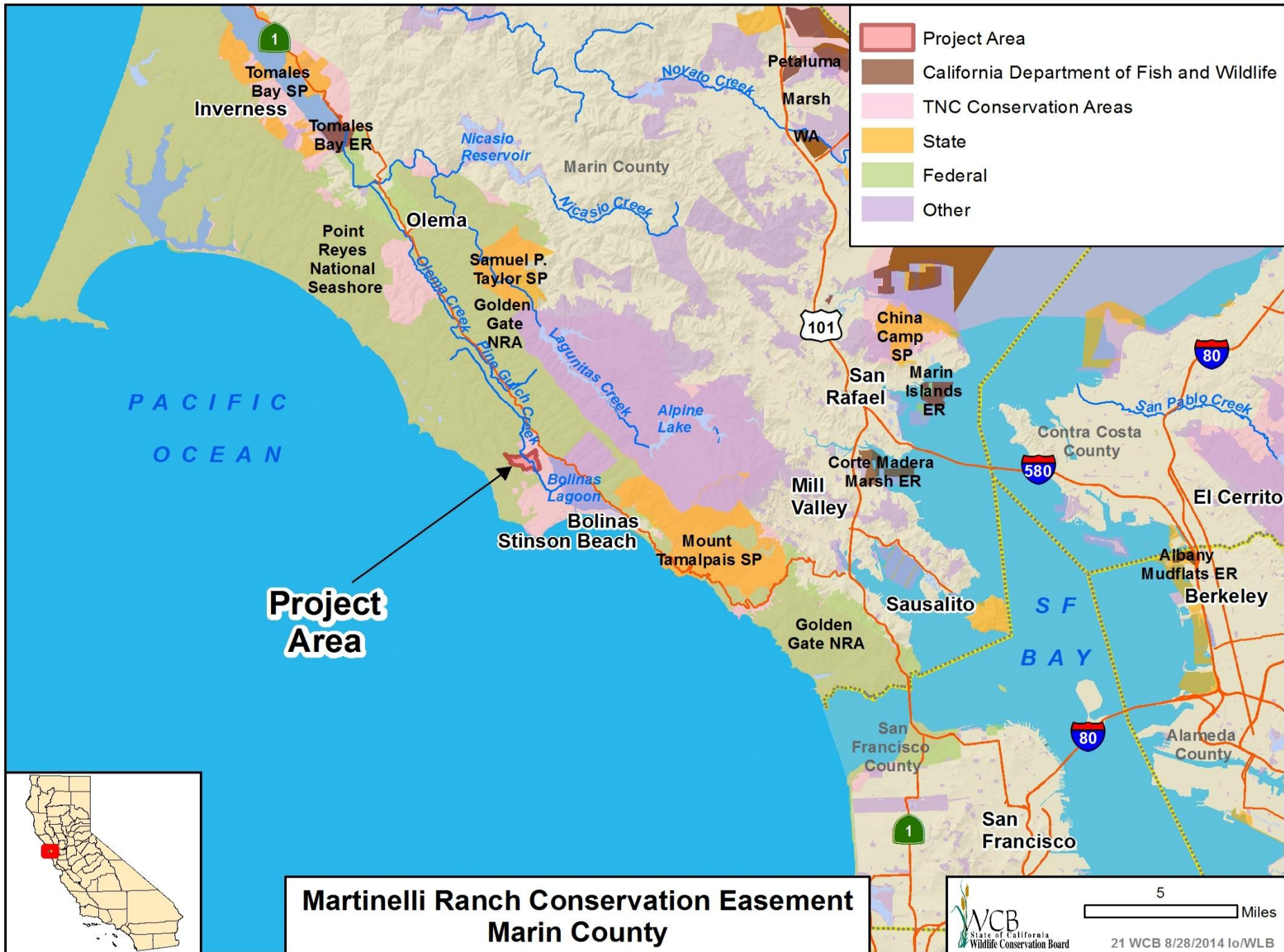


- Blue oak woodland above the Main Fork of the Cosumnes River

Photo courtesy of Paul Cockrell and The American River Conservancy

#20. Mark West Creek (McCullough II)

- This Item was withdrawn from consideration at this time.



Martinelli Ranch Conservation Easement Marin County

#21. Martinelli Ranch Conservation Easement



- Pine Gulch Creek at crossing

#21. Martinelli Ranch Conservation Easement



- Pine Gulch Creek near confluence with McCormick Creek

#21. Martinelli Ranch Conservation Easement



- Top of the Bolinas Ridge

#21. Martinelli Ranch Conservation Easement



- View of Bolinas from the Ranch

#21. Martinelli Ranch Conservation Easement

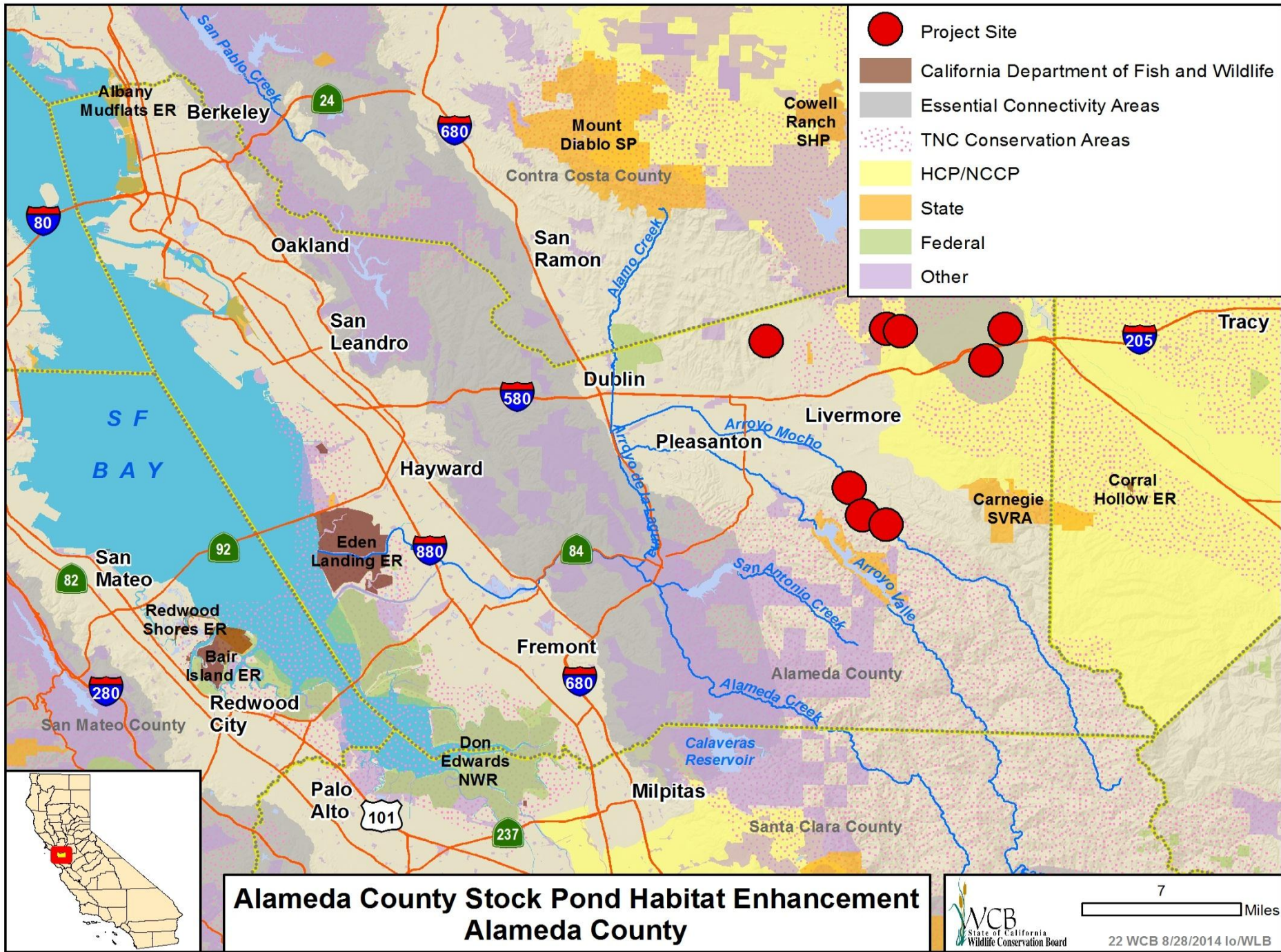


■ Naturalized Stock Pond

#21. Martinelli Ranch Conservation Easement



- Steelhead Trout spawning after March rains



#22. Alameda County Stock Pond Habitat Enhancement



Photo courtesy of Alameda County RCD/NRCS

- Alameda County livestock ponds

#22. Alameda County Stock Pond Habitat Enhancement



Photo courtesy of Alameda County RCD/NRCS

- Grazed rangelands provide important aquatic habitat

#22. Alameda County Stock Pond Habitat Enhancement



- California Tiger salamander and California Red-legged frog

#22. Alameda County Stock Pond Habitat Enhancement



- Pond in need of sediment removal. Thick vegetation, lacks open breeding habitat.

#22. Alameda County Stock Pond Habitat Enhancement



Photo courtesy of Alameda County RCD/NRCS

- Pond in need of sediment removal. Lacks open-water breeding habitat.

#22. Alameda County Stock Pond Habitat Enhancement



Photo courtesy of Alameda County RCD/NRCS

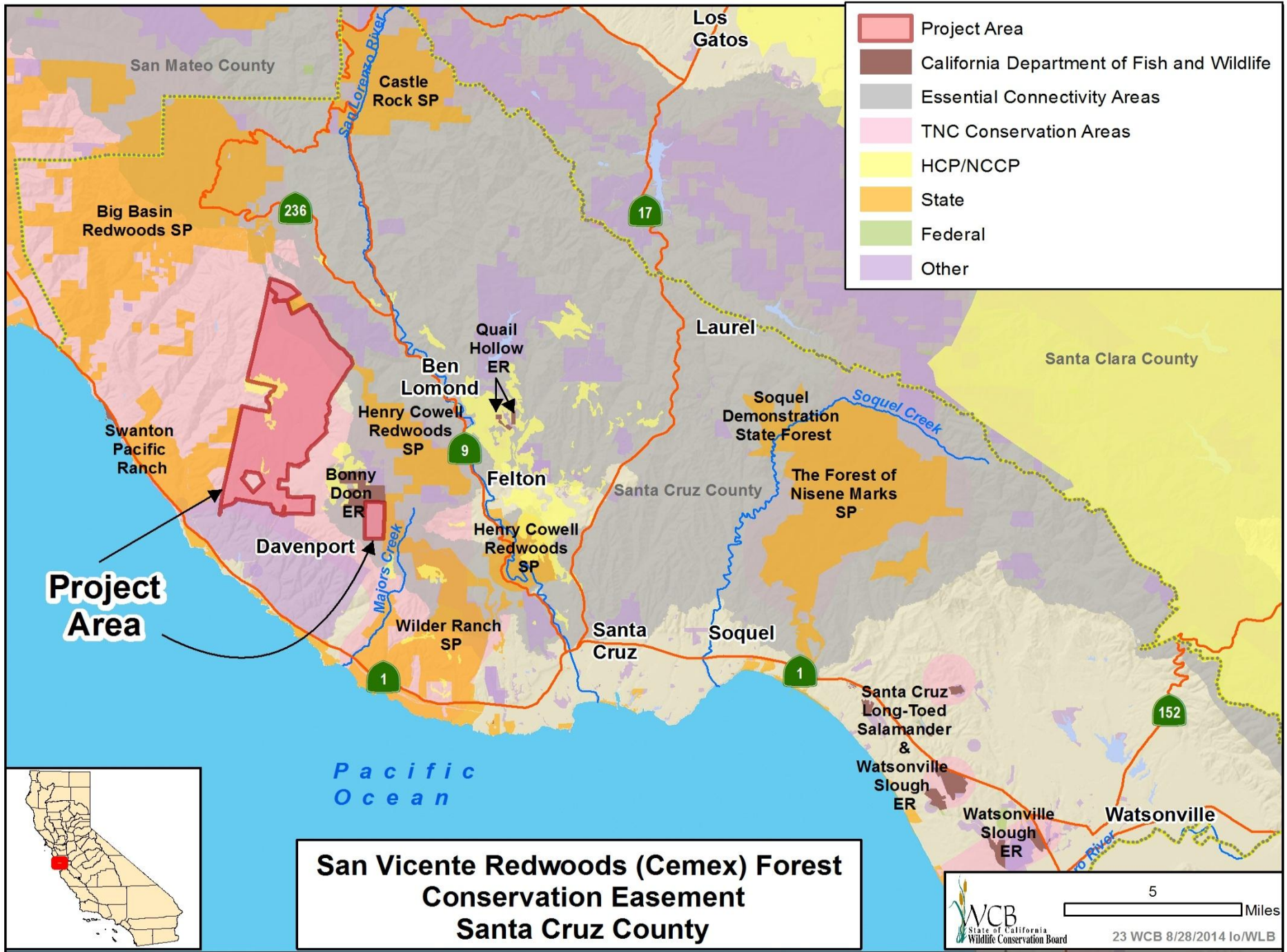
- Restored open breeding habitat for RLF

#22. Alameda County Stock Pond Habitat Enhancement

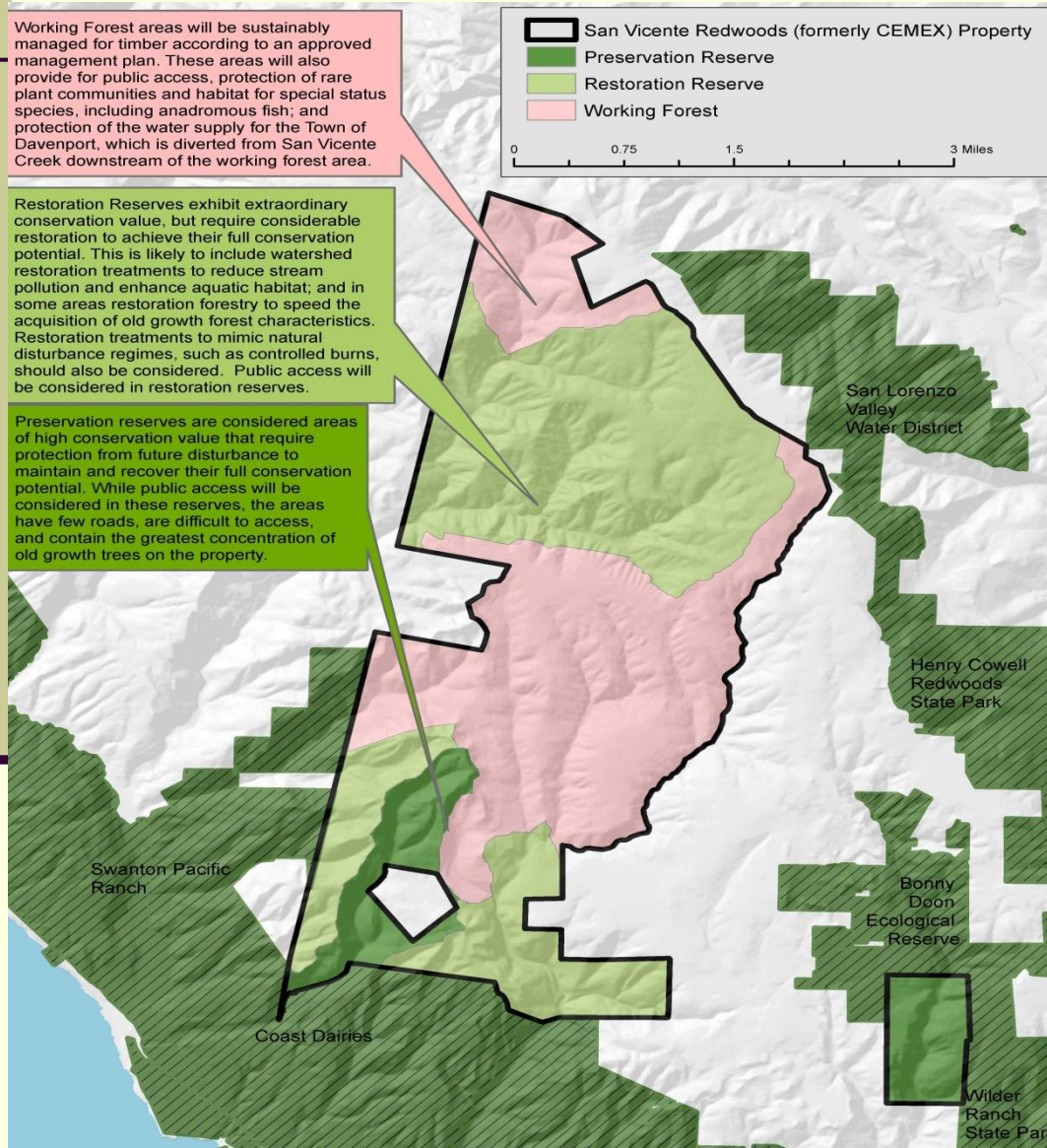


Photo courtesy of Alameda County RCD/NRCS

- Functioning aquatic habitat, wildlife-friendly pond



#23. San Vicente Redwoods (Cemex) Forest Conservation Easement



■ Conservation Reserve Designations

#23. San Vicente Redwoods (Cemex) Forest Conservation Easement



Photo courtesy of Williams K. Matthias

- San Vicente Redwoods – from northern portion of property looking west

#23. San Vicente Redwoods (Cemex) Forest Conservation Easement



Photo courtesy of Williams K. Matthias

- San Vicente Redwoods – overlooking forest and grasslands to ocean in distance

#23. San Vicente Redwoods (Cemex) Forest Conservation Easement



Photo courtesy of Williams K. Matthias

- Aerial view of redwood forest

#23. San Vicente Redwoods (Cemex) Forest Conservation Easement



- View of San Vicente Redwoods from the ocean (property starts with the forested hills above Davenport)

#23. San Vicente Redwoods (Cemex) Forest Conservation Easement



Photo courtesy of Stephen Slade

- San Vicente Creek in San Vicente Redwoods

#23. San Vicente Redwoods (Cemex) Forest Conservation Easement



Photo courtesy of Karl Kroeber

- Trail through San Vicente Redwoods

#24. San Joaquin River Parkway, Owl Hollow Improvements



■ Aerial View

#24. San Joaquin River Parkway, Owl Hollow Improvements



- View of the San Joaquin River from Owl Hollow

#24. San Joaquin River Parkway, Owl Hollow Improvements

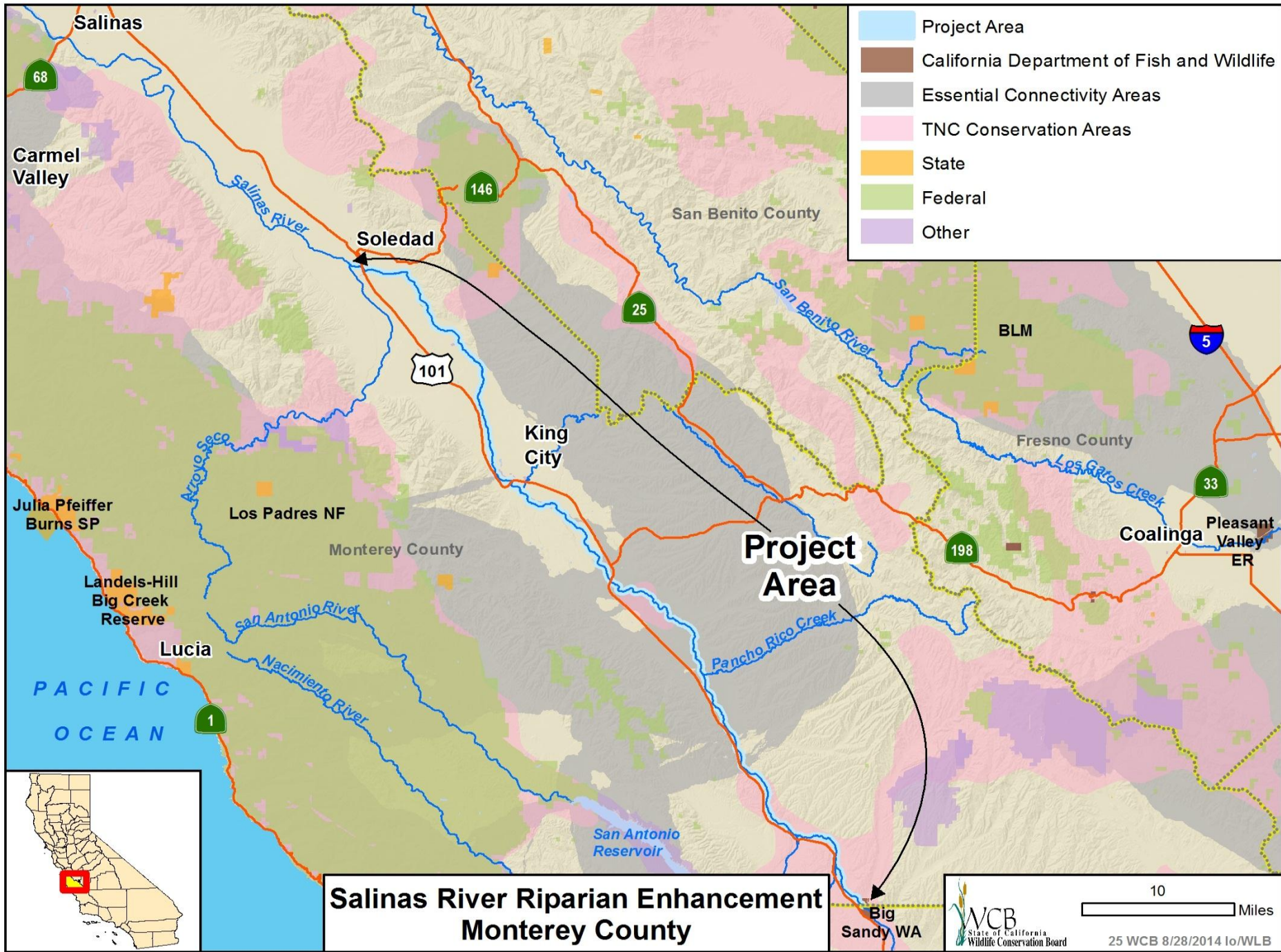


- Owl Hollow Property

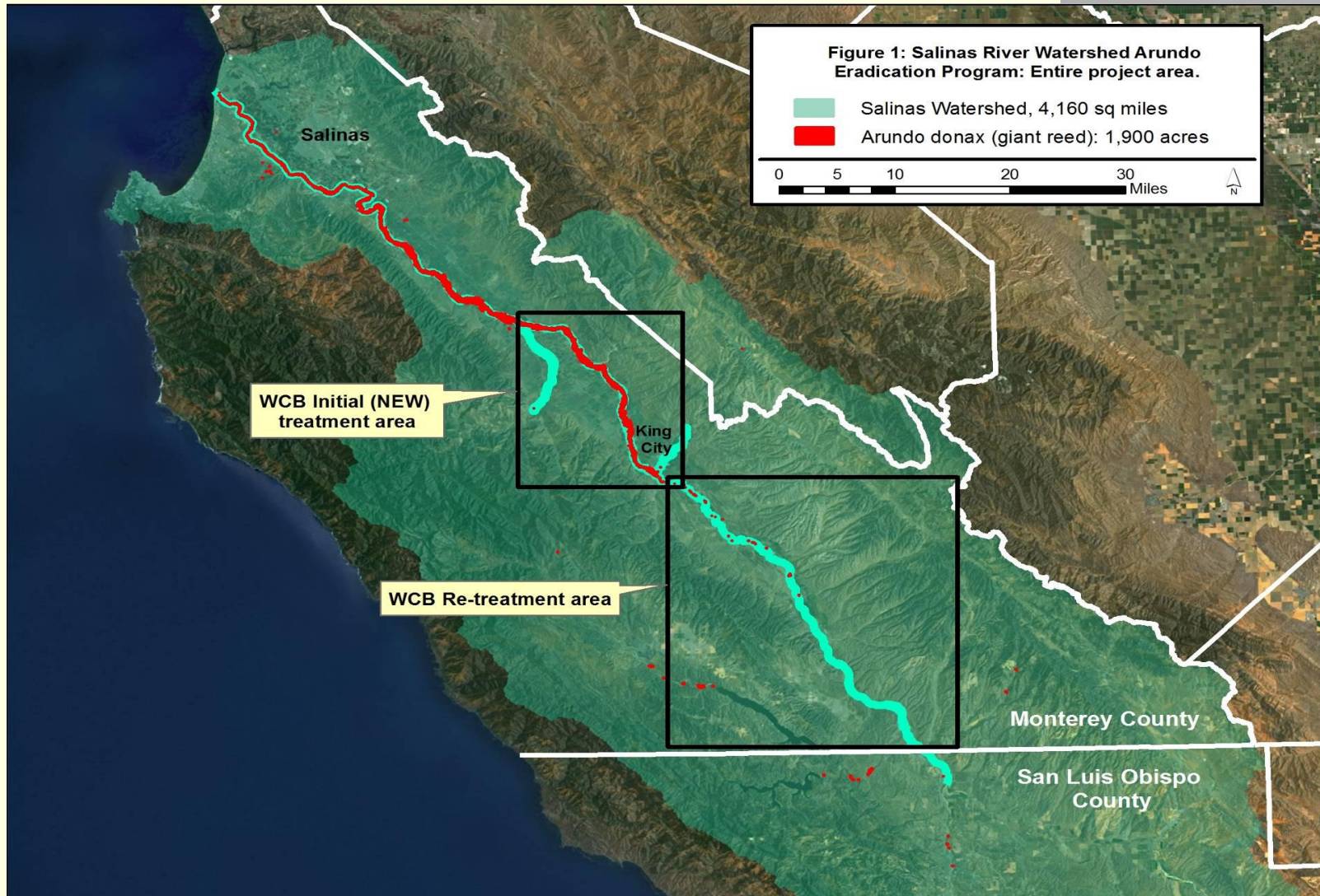
#24. San Joaquin River Parkway, Owl Hollow Improvements



- Existing orchard



#25. Salinas River Riparian Enhancement



#25. Salinas River Riparian Enhancement



Photo courtesy of Paul Robins,
Resource Conservation District of Monterey County

■ Arundo

#25. Salinas River Riparian Enhancement



Photo courtesy of Paul Robins,
Resource Conservation District of Monterey County

- Salinas River river channel dominated by Arundo

#25. Salinas River Riparian Enhancement



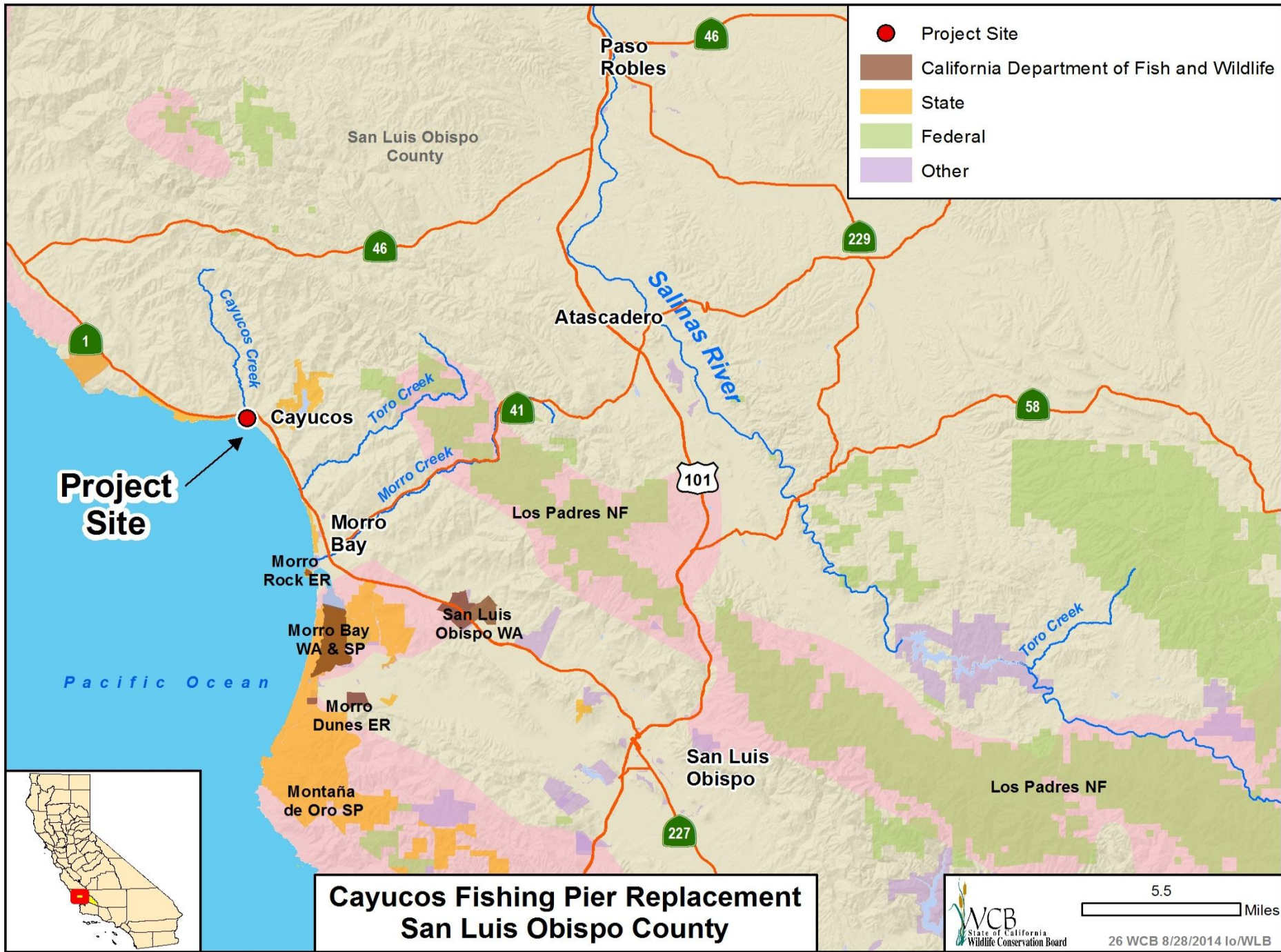
Photo courtesy of Paul Robins,
Resource Conservation District of Monterey County

■ Arundo

#25. Salinas River Riparian Enhancement



- Salinas River objective after Arundo removal



#26. Cayucos Fishing Pier Replacement



- Originally built in 1872 and lengthened in 1876 as a dock for coastal steamers the pier and Cayucos Beach became a State park in 1920



Photos courtesy of Cayucos Historical Society

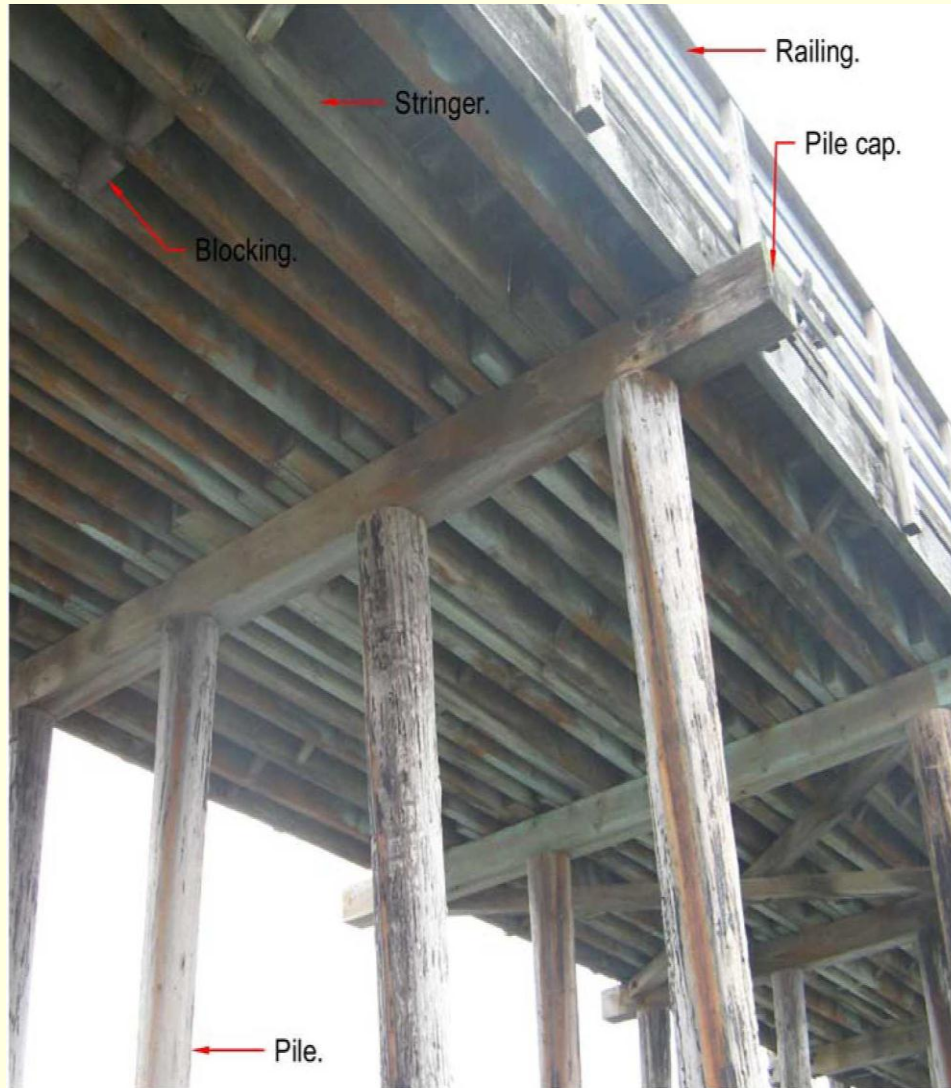
#26. Cayucos Fishing Pier Replacement



Photo courtesy of SLO County staff

- The pier has an estimated 400,000 visitors annually, of which approximately 50,000 visitors use the pier for fishing.

#26. Cayucos Fishing Pier Replacement



- The pier is 950 feet in length and has 61 bents each consisting of three or four piles each, a pile cap, and stringers that support the decking and railing

#26. Cayucos Fishing Pier Replacement



- The pier has been closed to the public since July of 2013

#26. Cayucos Fishing Pier Replacement



- Typical damage to pier including piles missing or broken away from the pile cap, rotting pile caps and stringers

#26. Cayucos Fishing Pier Replacement

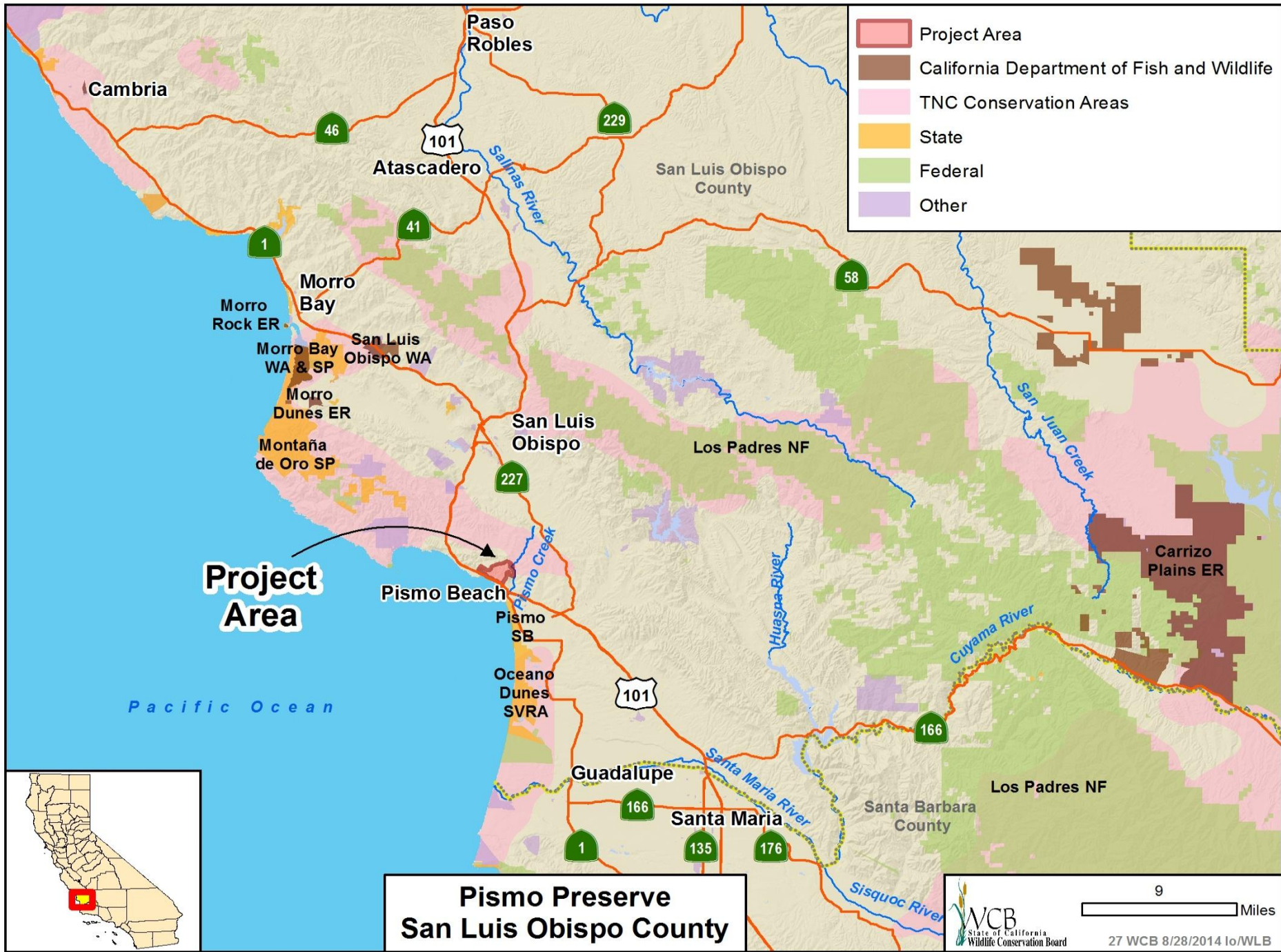


- Rotting pile caps, corroded hardware and rotting to piles below the water surface

#26. Cayucos Fishing Pier Replacement



- Additional damage to pile caps and decking



Proposed Pismo Preserve

San Luis Obispo County
California

Map Key

- Highway
- Railroad
- Pismo Preserve Boundary
- Excluded Area A
- Pismo Beach City Hall



Prepared on 3/4/14
by The Land Conservancy of
San Luis Obispo County



#27. Pismo Preserve



■ View of Pismo Preserve

#27. Pismo Preserve



- Western portion of the property.

#27. Pismo Preserve



- The property's 1.6 mile long southwestern border is within one-half mile of the shoreline.

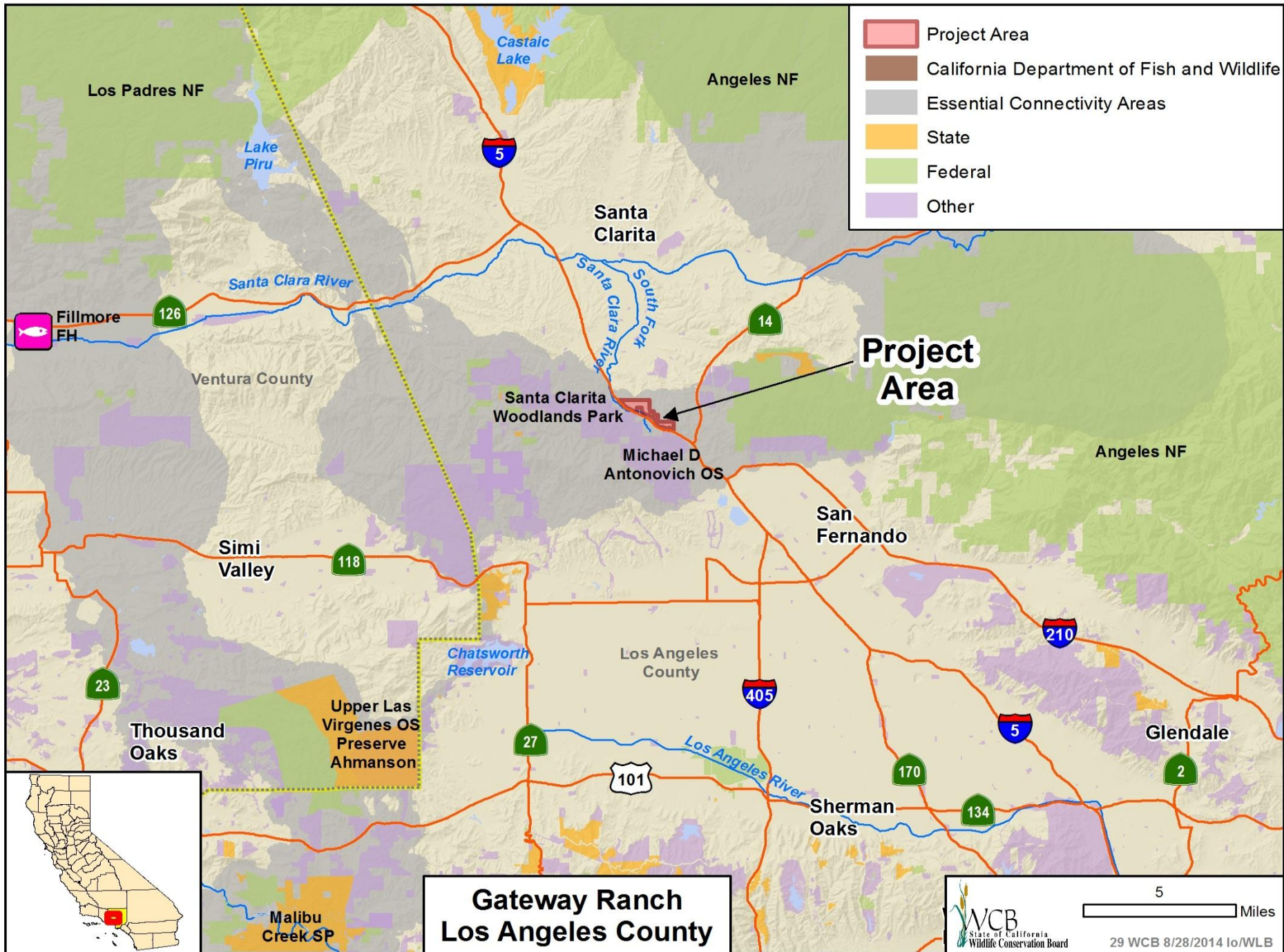
#27. Pismo Preserve



- Access road through oak habitat.

#28. Careaga Canyon Ranch Conservation Easement

- This Item was withdrawn from consideration at this time.



#29. Gateway Ranch



- Grove of Coast Live Oaks on Gateway Ranch

#29. Gateway Ranch



- Southern riparian scrub – looking north

#29. Gateway Ranch



- Looking southeast towards Interstate 5

#29. Gateway Ranch



- Southern boundary of the Gateway Ranch property

#29. Gateway Ranch



- Gateway Ranch is designated as a Significant Ecological Area in the Santa Clarita Valley Area Plan, “One Valley, One Vision”