

Common Operating Picture

IAP Software - Developed for Responders by Responders

Your ability to respond is our shared responsibility™

What is a Common Operating Picture?

The Common Operating Picture (COP) is a command and control tool that provides situational awareness enabling users to make accurate, informed decisions based on current or planned activities under the Incident Command System (ICS). Data and real time sources are used to support all functions a response using a single spatial data platform. The TRG COP will provide the acting incident management team with **a comprehensive picture to make adjustments to current activities and plan for the next operational period.**

Security Access

- Secure access to users that limit available data and services
- Map services and user access over secure connection (SSL)
- Restricting ability to print or share maps

Network Infrastructure

- Scalability
- Durability

Interoperability

- Ability to share and consume data
- Flexible for any situational needs

Archiving Data

- Archive data for historical purposes

COP Data Components

The Response Group
Emergency Response | Pre-Planning & Support

Ready State Data & Services

Pre-Staged Data

- Basemap Data
- Socioeconomic Data (schools, churches, etc.)
- Agency/Political Boundaries
- ACP/ GRPs

Client Data

- Facility/Terminal locations
- Secure data

Live Feeds

- Weather
- Traffic
- AIS/GPS Data
- Live Video

Environmental

- Resources at Risk (ICS 232)
- Wildlife Status
- SCAT

Safety

- Medical Facilities (ICS 206)
- Safety Status
- Air Monitoring Results

Operations

- Resource Summary (201-4)
- Staging Equipment Availability
- Personnel Accountability

Response Data & Services

Key Features :

- Mapping component with direct interface to Common Operating Picture
- Crisis Management Module
- Mobile device functionality with offline capability
- New automated Situation Status Display
- Operational Situation Awareness with mobile device data collection in the field
- Create Incident Wizard



Incident Action Plan Software
Incident Management System
Provided by: The Response Group

Logged In: Kenny Rhame
About Log Out

Navigation
AJO TESTER
Period 3

Forms
Initial IAP
Incident Details
Operational Periods
Notification Status
Weather Report
IAP Cover Sheet
ICS 201-1 - Incident Brief
ICS 201-2 - Summary of
ICS 201-3 - Current Orga
ICS 201-4 - Resource Sur
ICS 201-5 - Site Safety a
ICS 202 - General Respon
ICS 202a - Command Dir
ICS 206 - Medical Plan
ICS 211e - Check-In List
ICS 211p - Check-In List
ICS 214 - Unit Log
ICS 214a - Individual Log
ICS 215a - Safety Analy
Print Menu
Detailed IAP
All

ICS 202 - General Response Objectives

Incident Name: AJO TESTER Period: Period 3
Version Name: 10/02/2013 12:35:55 Last Edit: 10/02/2013 12:35:55 By: Alex Oulapour

Overall Strategic Get Preloads Get Data From 201 Overall and Strategic Objectives

Overall Objective	Assigned To	Status
Ensure the Safety of Citizens and Response Personnel		
Maximize Protection of Environmentally-Sensitive Areas		
Control the Source of the Spill		
Manage a Coordinated Response Effort		
Contain and Recover Spilled Material		
Recover and Rehabilitate Injured Wildlife		
Remove Oil from Impacted Areas		

Operational Period Command Emphasis (Safety Message, Priorities, Key Decisions/Directions)

Incident Action Plan Components

<input type="checkbox"/> ICS 201-1 - Incident Briefing Map/Sketch	<input checked="" type="checkbox"/> ICS 202 - General Response Objectives	Other Attachments
<input checked="" type="checkbox"/> ICS 203 - Organization Assignment List	<input checked="" type="checkbox"/> ICS 204 - Assignment List	
<input checked="" type="checkbox"/> ICS 205 - Communications Plan	<input checked="" type="checkbox"/> ICS 205a - Communications List	
<input checked="" type="checkbox"/> ICS 206 - Medical Plan	<input checked="" type="checkbox"/> ICS 207 - Organization Chart	
<input checked="" type="checkbox"/> ICS 208 - Site Safety Plan	<input checked="" type="checkbox"/> Map / Chart	

Approved By

Position	Signature
Incident Commander	
Federal OSC	
State OSC	
Local OSC	



Common Operating Picture

The Response Group
Emergency Response Pre-Planning & Support

The Response Group
Emergency Response Pre-Planning & Support

281-880-5000 (Phone)
281-880-5005 (Fax)
www.responsegroupinc.com

Tools

Layout

NOAA

95°20'24" W

95°19'47" W

95°19'11" W

State:

[Select a State]

County:

[Select a County]

Weather Alert Feed:

[Select a County]

☒ Current Conditions

☐ Buoys/C-Man/Tides

☐ Marine Forecast

☐ Radar Images

http://www.responseg...
FREEPORT, TX (77542)
Freeport, TX (77542)
Last Updated 10/13/06 3:45 PM CDT
72 °F
Cloudy Feels like 72 °F
UV Index: 2 Low
Dew Point: 60 °F
Humidity: 67 %
Visibility: 10.0 miles
Pressure: 29.96 inches and steady
Wind: 13 mph from the ENE

TRG

Active Map: ConocoFreep

Active Layer: Sites

Refresh Toggle Legend

☒ Working Layer
☒ Company Layers
☒ Sites
☒ Refinery
☒ Equipment Strategy
☒ Boom Strategy
☒ Division
☒ Pipeline
☒ Basemap Layers
☒ Imagery

http://www.responsegroupinc.com - ShowDocument.aspx (application/pdf Object...)

Save a Copy Print Undo 53%

Site Pictures

RESPONSE INFORMATION

Deployment Strategy: Protection

Response Method: Low Water: Booming High Water: Booming

Boom Required: ~400'

Recovery Method: N/A

Trunk Truck Access: N/A

Additional Pumps Required: No

Notes Required: N/A Bridge Height: N/A

RESPONSE OBJECTIVES CHECKLIST

Safe

☒ Identify hazard(s) of spilled material

☒ Activate emergency services as required (911, Fire, LEPC)

☒ Evacuate and secure area if required

☒ Conduct air monitoring & air characterization

☒ Establish exclusion perimeter, safety zones, & evacuation route

☒ Preparedness of Site Safety Team & Medical Plan

☒ Restrict access area to properly equipped & trained personnel

☒ Continuously evaluate site hazards & risks

Response

☒ Conduct external agency & internal notifications

☒ Identify and setup staging areas to support response ops

☒ Activate response contractors & equipment

☒ Implement response tactics to contain & recover product

☒ Establish command post & field communications

☒ Request flight traffic restriction if required

☒ Implement water sampling & disposal procedures as required

☒ Initiate clean & decont procedures as when appropriate

Environmental

☒ Identify, prioritize, & protect socio-economic sensitivities

☒ Identify, prioritize, & protect environmentally sensitive areas

☒ Establish wildlife rescue & rehabilitation operation if required

Support

☒ Conduct visual assessments (air tracking & surveillance)

☒ Provide personnel & equipment support as required

☒ Establish first aid stations & site security as required

SITE INFORMATION

Site Name: Old Barge Heeling Area

Strategic Objective: Deploy 400' of protection boom across perimeter of Old Barge Heeling area.

Latitude: 28° 56' 27.0"

Longitude: 95° 19' 48.7"

Country: America

Population Density: Low

Land Use: Recreation

Distance from shipping: Approx 2.25 mi upstream

Site Limitations: None

ACCESS INFORMATION

Site Access: River

Access Type: N/A

Access Type: N/A

Access Condition: N/A

Access Location: Right Descending Bank

WATERWAY INFORMATION

Waterway Name: River

Access Current Speed: 1-3 mph

Waterway Influence: Yes

Waterway Width: Low Water: ~200' High Water: N/A

SHORELINE CHARACTERISTICS

Shoreline Type: Beachhead, Rocky

Bank Slope: N/A

Bank Elevation: ~5'

Access Facilities: None

11 x 8.5 in

1 of 1

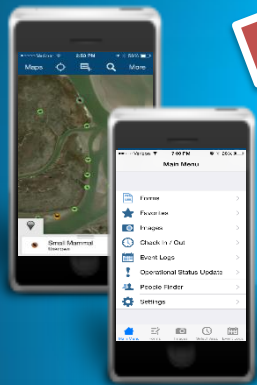
Done

Common Operating Picture

The Response Group
Emergency Response Pre-Planning & Support

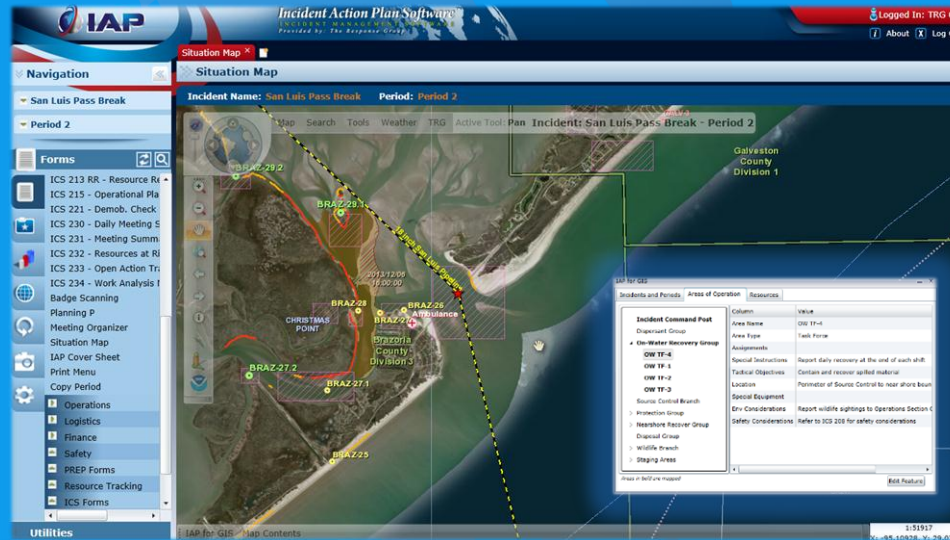
Mobile Data Collection

- Displays real-time updates
- Data collection from the field



GIS Specialists

- Create and Edit data from Command Post
- QA/QC field data collected

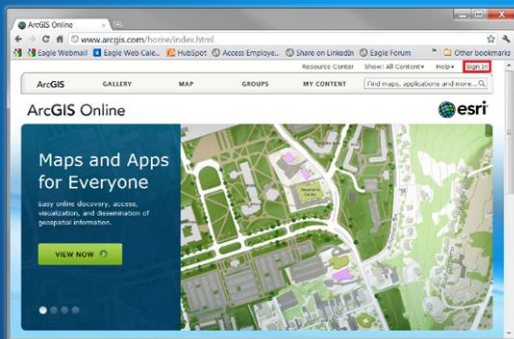


Integration

- Fully integrated with other TRG products including IAP

Compatibility

- ArcGIS Online
- Uses Standard Web Map Service (WMS)



Enhanced IAP Integration

The Response Group
Emergency Response Pre-Planning & Support



Build map features for ICS forms and data

- Areas of Operation
- Tactical Resources
- Resources at Risk
- Medical Facilities
- Geographic Response Plans

The screenshot displays the Incident Action Plan (IAP) software interface. On the left is a navigation pane with sections for 'Navigation', 'Forms', and 'Utilities'. The main window is titled 'Incident Action Plan Software' and shows a map of the San Luis Pass area. The map includes labels for '18 inch San Luis Pipeline', 'CHRISTMAS POINT', 'Brazoria County Division', 'SAN LUIS PASS', and 'Braz-26'. A sidebar on the right lists 'Areas/Resources' and 'Incidents'. The bottom of the screen shows a 'Notes' section with contact information for Texas Parks & Wildlife Dept. and U.S. Fish & Wildlife Service.

Enhanced IAP Integration



Retrieve IAP forms and reports from the COP

Situation Map

Incident Name: San Luis Pass Break Period: Period 2

Map Search Tools Weather TRG Video Feed

Areas/Resources

Incidents Areas of Operation Resources

Areas in bold are mapped

Filter by Area

ICS 204

ICS 211

ICS 215

Wildlife Branch

Air Operations Branch

Recovery and Protection Branch

Shoreside Recovery Group

Protection Group

Protection Group TF-1

Protection Group TF-2

Area Name

Area Type

Assignments

Special Instructions

Tactical Objectives

Protection

Task Force

Deploy boat

BRAZ-27,

Protection

Shoreline

Edit

ICS 204 - Assignment List

Incident:

Branch:

Period:

Division/Group:

Prepared By Signature:

Task Force: BRAZ - 27

Approved By Signature:

Assignments

1. Notify: Texas Parks & Wildlife Dept. (281) 461-4071 Houston; U.S. Fish & Wildlife Service (281) 286-8282 Houston; Brazoria National Wildlife Refuge Manager (979) 849-7771; U.S.C.G. via NRC (800) 424-8802; TXGLO via Hotline (800) 832-8224; TOEO (512) 463-7727.

2. Assess area and remove debris along shoreline.

3. Deploy containment boom across inlets to sensitive areas.

4. Conduct impacted wildlife search and rescue operations.

5. Restrict access and establish security to ensure site integrity.

Resources Required

Area of Operation	Resource Type	Description	Quantity	Size
BRAZ - 27	Boom	Protection Boom	600 feet	18 inch(es)
BRAZ - 27	Equipment: Comms	Equipment: Comms	2 each	
BRAZ - 27	Equipment: Decon	Decon Station	1 each	
BRAZ - 27	Equipment: PPE	Equipment: PPE	17 each	
BRAZ - 27	Equipment: Safety	Monitoring Equipment	1 each	
BRAZ - 27	Generator	Generator	1 each	
BRAZ - 27	Hand Tools	Hand Tools	15 each	
BRAZ - 27	Lighting	Light Towers	1 each	
BRAZ - 27	Manpower: Operator	Operator	1 each	
BRAZ - 27	Manpower: Responder	Spill Technicians	10 each	
BRAZ - 27	Manpower: Supervisor	Supervisor	1 each	
BRAZ - 27	Portable Toilets	Port-A-Lets	1 each	
BRAZ - 27	Sorbent: Boom	8" Rolled	800 feet	8 inch(es)
BRAZ - 27	Sorbent: Pads	Sorbent: Pads	10 bales	
BRAZ - 27	Vehicle	ATV w/Trailer	1 each	

Tactical Objective

Prevent product from impacting San Luis Pass County Park sensitive marshes and residential areas. Contain and conduct appropriate shoreline cleanup efforts to remove product to extent possible. Minimize impact to wildlife in the area.

Location of Work

Latitude: N 29°04'49" Longitude: W 95°7'52". From Galveston I-45 Causeway to 61st St., turn right 1.6 mi to Seawall Blvd.(3005), turn right on Seawall Blvd.(3005) 22mi over San Luis Pass Bridge to San Luis Pass Park on right and follow right 0.1 mi to access point and boat ramp.

STAGING AREAS: San Luis County Park & Boat Ramp 29-04-43 N 095-07-51 W

To Boat Ramps: I-45 south of Houston to Seawall Blvd. (FM 3005), proceed west to the first exit after crossing the San Luis Pass bridge, take exit and turn north into the park area

TGLO TOOL KIT - GRP - Sector Houston-Galveston, TX - SITE SPECIFIC RESPONSE SHEET 29. Christmas Point CHART(S): Nautical Chart (11322) Upper Coast Atlas Page 49

From MSU Galveston: South on Hwy 87, crossing the San Luis Pass Bridge.

Closest Airport: Scholes Field Airport GLS. Closest Helicopter Landing: Scholes Field Airport, 29°15'55.16"N 094°51'37.46"W

Special Environmental Considerations

See TGLO ESI Map 49 - Christmas Point

ICS 204 - Assignment List

Printed: 1/28/2008 14:34

Page 1 of 3.

© 1997-2008 dbSoft, Inc.

Advanced COP Integration

The Response Group
Emergency Response | Pre-Planning & Support

Live Feeds

- GPS tracking of resources
- AIS vessel tracking
- Traffic and road closures
- Weather data
- Video feeds
- Social Monitoring

IAP Incident Action Plan Software
Provided by The Response Group

ICS 215 - Operational Planning Worksheet × ICS 234 - Work Analysis Matrix × Map - Common Operating Picture ×

Situation Map

Incident Name: **COPI Subsea Challenge Exercise** Period: **Period 1 Working**

Map Search Tools Weather TRG Video Feeds Active Tool: Zoom

BRUNEI Brunei
Malaysia
Indonesia Samarinda
Balikpapan
Palangkaraya
Manado
Davao
Philippines

This is a DRILL

Areas/Resources
Incidents Areas of Operation Resources

Areas in bold are mapped
+ Filter by Area Report

- Incident Command Posts
- Malaysia Branch
- Philippines Branch
- Indonesia Branch
- Singapore Branch

Area Name	Incident Command Post
Area Type	Command Post
Assignments	
Special Instructions	
Tactical Objectives	
Location	
Special Equipment	
Env Considerations	

Add Feature

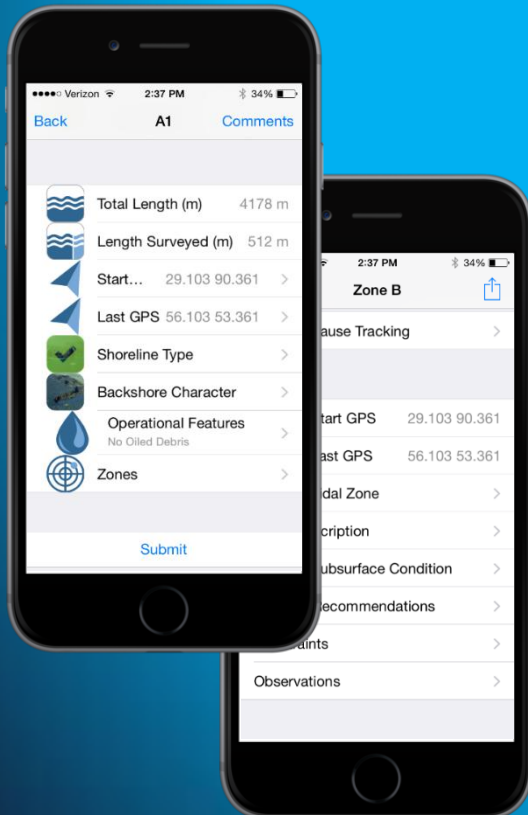
Wednesday, October 15, 2014
1:10504961
Keridix: 115.97581, Y: 9.32844



TRG Recon - SCAT

The Response Group
Emergency Response Pre-Planning & Support

- Create NOAA Shoreline Oiling Summary forms in the field using mobile devices
- Create SCAT Segments tracing footsteps using “breadcrumbs”
- Direct integration with IAP Software
 - NOAA Shoreline Oiling Summary (SOS) Form
 - Common Operating Picture (COP)



Incident Action Plan Software™
Provided by The Response Group

Map - Common Operating Picture x SCAT Summary x SCAT Inspection x

Situation Map

Incident Name: San Luis Pass Break Period: Period 2

Map Search Tools Weather TRG Video Feeds Active Tool: Pan

Protection Group TF-2

29-A

29-B

29-C

San Luis Pass Break

This is a Dr

SCAT Shoreline Oiling Summary Version Name: San Luis Pass - 1 (Pre)

Incident Name: San Luis Pass Break

General Information

Segment ID	San Luis Pass - 1 (Pre)	Survey Start	12/12/2014 10:20:00 AM	Tide Height	-0.5 mtr
Operations Division	SCAT TF-1	Survey End	12/12/2014 11:20:00 AM	Tide State	Rising
Survey By	Foot	Weather	Clouds	Air Temp	45 F

Survey Team (Alpha)

Name	Organization	Contact Number
Abel, Roy	The Response Group	(832) 334-5211
Acams, Hannah	The Response Group	(210) 415-1344
Archer, Cole	The Response Group	(305) 440-4303

Segment

Total Segment Length	800 mtr	Length Surveyed	500 mtr	Maximum Interstitial Width	8 mtr
Start GPS	-95.12309839 29.083042636				
End GPS	-95.119413174 29.0850240336				

Shoreline Type

Primary	Secondary	Oiled	Shoreline Type
X			Fire-grained Sand Beaches

Coastal/Backshore Character

Primary	Secondary	Type	Note
X		River Inlet/Channel	
	X	Beach	

Primary Substrate Type

USPO

Operational Features

Oiled Debris?	No	Type		Debris Amount	
Direct backshore access?	No	Access restrictions		Use ATVs to access sandy areas	
Alongshore access from next segment?	No	Suitable Backshore Staging?		No	

Surface Oiling Conditions

Zone ID	Tidal				Oil Cover				Oil Thickness				Oil Character							
	LI	MI	UI	SU	Length	Width	Distr.	%	PC	CV	ST	FL	FR	MS	TB	TC	SR	AP	No	
A					0		0													X

Observations

heavy bands of fresh oil and noase in mid to upper boat zones

Constraints

Use ATVs to access fine sandy areas.

Cleanup Recommendations; Ecological/Recreational/Cultural Issues/Wildlife Obs.

Recommend mechanical and manual removal of oil.
Airing pavers and other shorebirds may use this area for resting or foraging.
Can be a high traffic area for fishermen.

SCAT Shoreline Oiling Summary

Incident Name: San Luis Pass Break

Last Update By: Lindsey, David At 12/22/2014 14:51 GMT 3:01

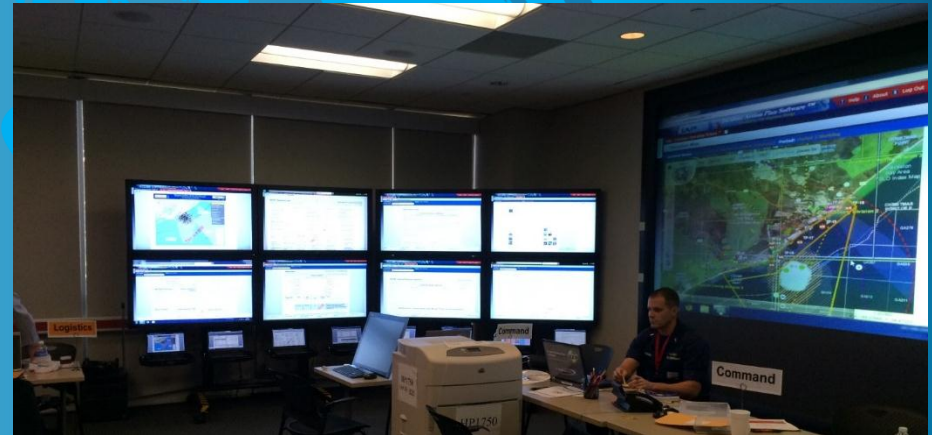
INCIDENT ACTION PLAN SOFTWARE™ Printed: 12/25/2014 18:22 GMT 4:00 Page 1 of 1 6 TRO

Situation Status Display

The Response Group
Emergency Response Pre-Planning & Support

Electronic Situation Status Display Kit

- Multi-touch LCD Monitors
- 32" Multi-touch console for COP
- Large screen for center display
- Easy setup with motorized cases



- Integrated with client ArcGIS Online accounts
- Air monitoring provided by CTEH
- ICS 204 access from map on mobile devices

The screenshot displays a GIS application interface. The main map area shows an aerial view of St. Milford, Texas, with several concentric dashed circles representing different response zones. A legend on the left side lists various symbols used on the map:

- Images:** Flare, Fence, Roll Off Box, Truck, Trackhoe, Backhoe, Mats, Staging Area.
- Road Closures:** (Symbol)
- 2013/11/15 Images:** (Symbol) 2013/11/15
- ICS - 204:** (Symbol)
- CTEH - SIERA Air Monitoring locations_siera:** (Symbol)
- CTEH - Air Monitoring location_realtime_reading:** (Symbol)
- West Texas LPG MM 39.4 Response:** (Symbol), (Symbol), (Symbol), (Symbol), (Symbol), (Symbol)

On the right side, there are two tables:

Area of Operation	Resource Type	Description	Quantity	Size
BRAZ-27	Boom	Protection Booms	600 feet	10 inches
BRAZ-27	Equipment: Contents	Equipment: Contents	2 each	
BRAZ-27	Equipment: Drones	Drone Station	1 each	
BRAZ-27	Equipment: PPE	Equipment: PPE	17 each	
BRAZ-27	Equipment: Safety	Monitoring Equipment	1 each	
BRAZ-27	Generator	Generator	1 each	
BRAZ-27	Hand Tools	Hand Tools	15 each	
BRAZ-27	Lighting	Light Towers	1 each	
BRAZ-27	Margenator: Operator	Operator	1 each	
BRAZ-27	Margenator: Riggeroperator	Split Technicians	10 each	
BRAZ-27	Margenator: Supervisor	Supervisor	1 each	
BRAZ-27	Pipeline Tools	Pipe-A-Lots	1 each	
BRAZ-27	Submersible Boats	8' Folded	800 feet	8 inches
BRAZ-27	Submersible Pads	Submersible Pads	10 boxes	
BRAZ-27	Vehicle	A/TV Trailer	1 each	

Below the tables, there is a section titled "Textual Objective" which states: "Prevent product from impacting San Luis Pass County Park sensitive resources and residential areas. Contains and contain appropriate materials storage efforts to recover product to inhibit potential. Minimize impact to wildlife in the area."

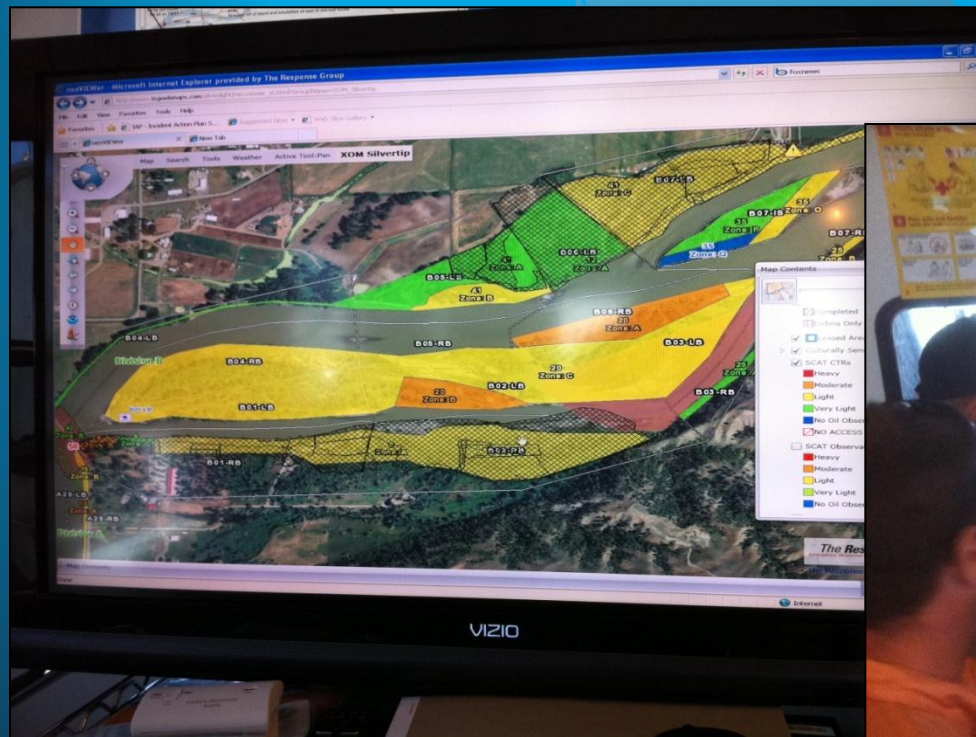
There is also a section titled "Location of Work" which provides coordinates and directions: "Latitude: N 29° 04' 40" Longitude: W 90° 7' 52" From Galveston I-45 Causeway to SR 145 St. Ignace right 1.6 mi to Seawall the 200 ft. turn right on Highway 200 over the San Luis Pass Bridge to San Luis Pass Park on right and follow right 0.1 mi to access point and boat camp. STAGING AREA: San Luis County Park & Boat Ramp 29° 04' 40" 99° 02' 41" W To Boat Ramp 1.45 miles south of Houston to Seawall Blvd. 87M 3000, proceed west to the first exit after crossing the San Luis Pass bridge, take and head north into the park area. TQLO TOCH RTT - GPS - Sector Houston Calverton, TX - 8015 SPC CHIC RESPONSE SHEET 20 Christmas Point CHARITABLE National Chart 115200 - Upper Coast 48m Page 49 From Mito Calverton South on Hwy 21 crossing the San Luis Pass Bridge. Chover Airport, Schinck Field Airport 10.5 Chover Helicopter Landing Schinck Field Airport, 3P 1915S, 107N 094 51'37" 40W"

At the bottom right, there is a small inset photo showing a large fire burning at night, likely related to the incident being mapped.

Examples

Yellowstone River Response

- Operational status updates from the field using mobile devices
- COP display with operational field updates



Examples

The Response Group
Emergency Response | Pre-Planning & Support

Indonesia Exercise

- COP display in Indonesia, Singapore and Houston EOC
- Streaming videos (both live and stock footage)
- COP used for Executive Team briefings

IAP Incident Action Plan Software
Provided by The Response Group

ICS 215 - Operational Planning Worksheet | ICS 234 - Work Analysis Matrix | Map - Common Operating Picture

Situation Map

Incident Name: **COPI Subsea Challenge Exercise** Period: **Period 1 Working**

Map Search Tools Weather TRG Video Feeds Active Tools Zoom

BRUNEI Brunei Malaysia Philippines Davao

Indonesia Samarinda Balikpapan **Maluku 1** Manado

Palangkaraya

Wednesday, October 15, 2014 1:10504961 KeriDX: 115.97581, Y: 9.32844

Areas/Resources

Incidents Areas of Operation Resources

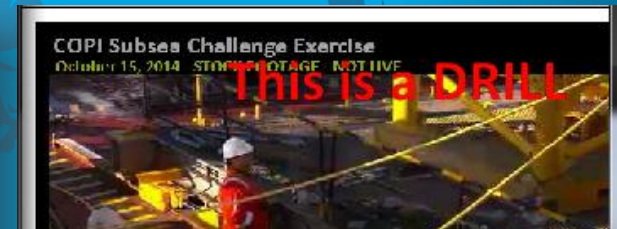
Areas in bold are mapped

Filter by Area Report

- Incident Command Posts
- Malaysia Branch
- Phillipines Branch
- Indonesia Branch
- Singapore Branch

Area Name	Incident Command
Area Type	Command Post
Assignments	
Special Instructions	
Tactical Objectives	
Location	
Special Equipment	
Env Considerations	

Add Feature



The Response Group
Emergency Response Pre-Planning & Support



IAP

Questions/Comments?

IAP Software - Developed for Responders by Responders

Your ability to respond is our shared responsibility™