

HIGHLIGHTS OF WORKSHOP 1: COMMON OPERATING PICTURE (COP)

EXPECTATIONS AND STANDARDS FOR OPERATIONAL USE IN CALIFORNIA

Judd Muskat
GIS Coordinator - OSPR



California Department of
Fish and Wildlife

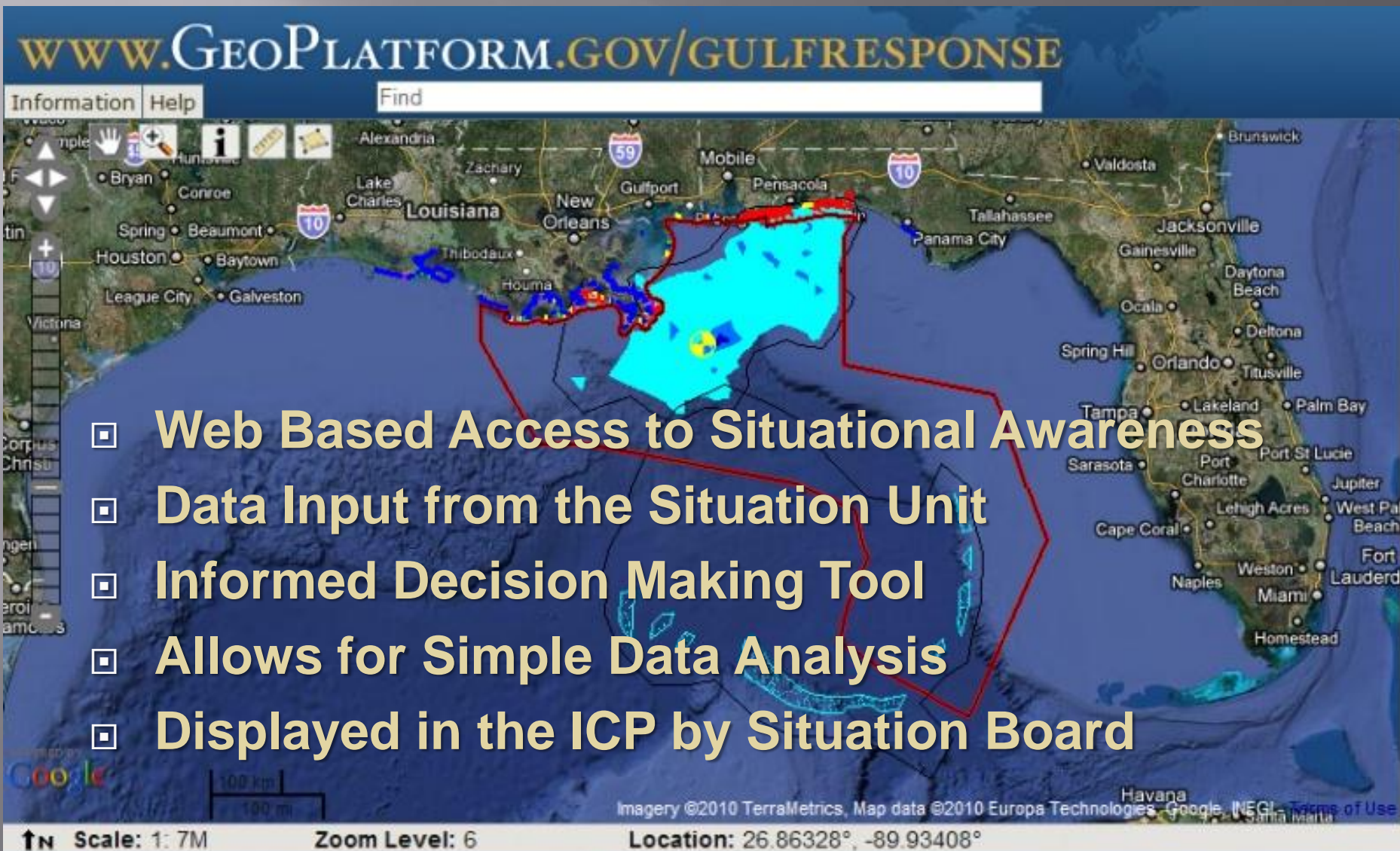
~24 Participants

- ▣ State Government
- ▣ Federal Government
- ▣ Industry Contractors
- ▣ All GIS/COP players that we regularly drill with

Presentations

- ▣ Witt O'Brian's
- ▣ The Response Group
- ▣ NOAA
- ▣ OSPR

Common Operational Picture



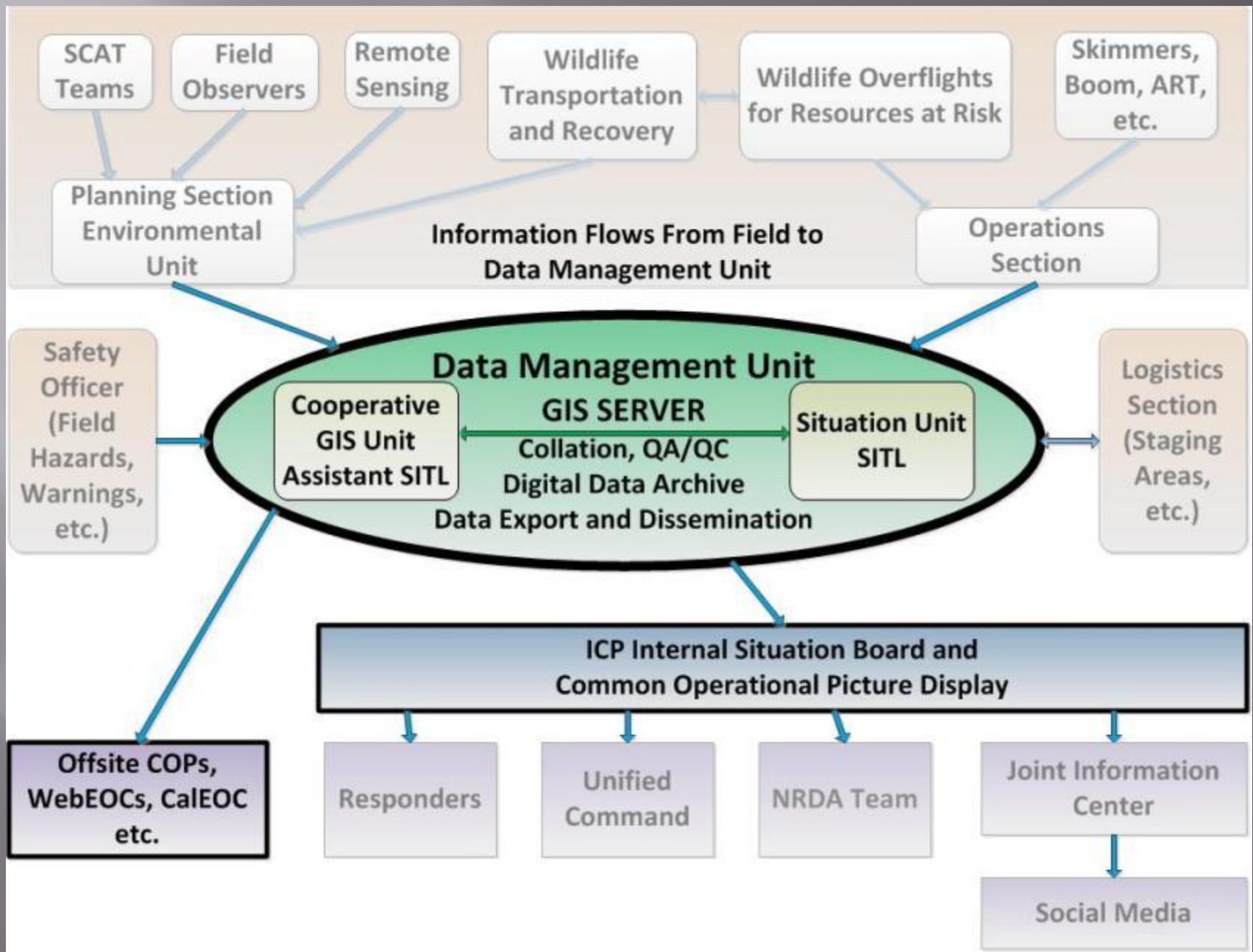
California's Expectations for an Oil Spill COP

- ▣ Accessible via Internet
- ▣ Multiple Levels of Access
 - Responder Login (Access to All Response Data)
 - Public – No Login Required (JIC/Liaison – Situation Display for Public Consumption as Directed by the UC)
- ▣ Ability to turn individual layers on/off
- ▣ Ability to Create and Download Custom Maps
- ▣ Ability to Download GIS Files

How Many COPs can be Used for a Response

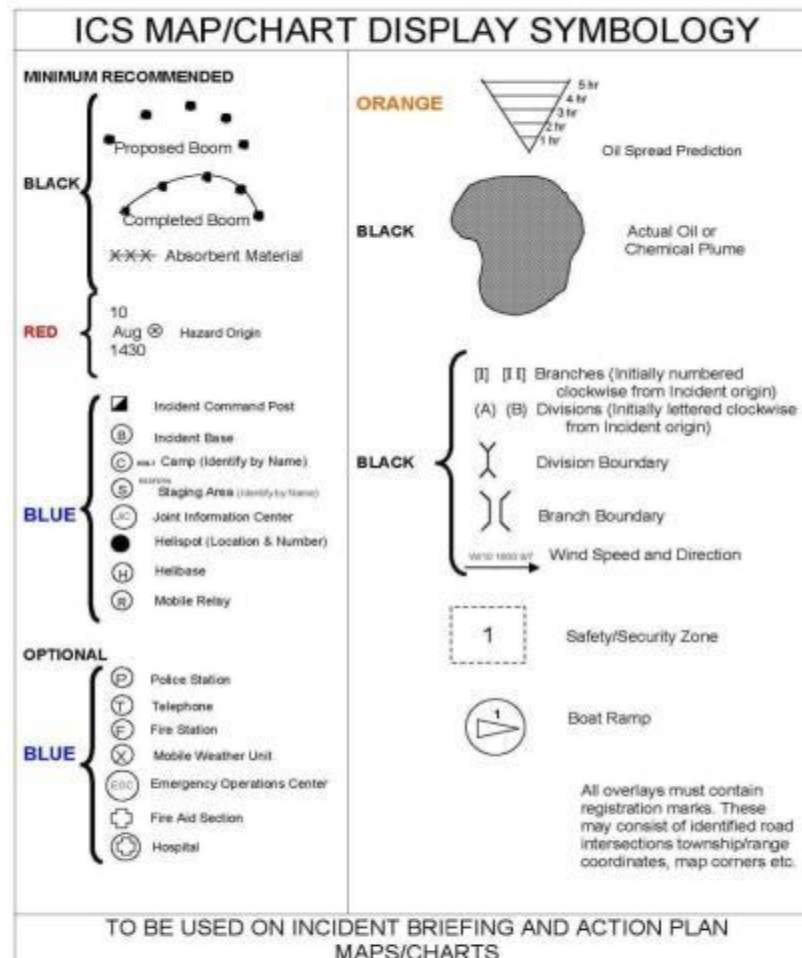
- ▣ **One** – Authorized by the UC, displayed in the ICP
 - Used for all meetings and briefings
- ▣ **Many** – Offsite, Individual “In-House” Data Viewers *Using Data Sourced from SITU*
 - A Signed Data Sharing Agreement Will Assure All Parties Have All Data.
- ▣ **More than one COP displayed in the ICP**
 - WILL LEAD TO CONFUSION

Model for Flow of Data from the Field and Data Management in the ICP



COP Visual Display and map Standardization

MAP/CHART SYMBOLOGY



MAP/CHART SYMBOLOGY

ICS MAP/CHART DISPLAY SYMBOLOGY	
<p>MINIMUM RECOMMENDED</p> <p>BLACK</p> <ul style="list-style-type: none"> Proposed Boom Completed Boom Absorbent Material <p>RED</p> <ul style="list-style-type: none"> 10 Aug 1430 Hazard Origin <p>BLUE</p> <ul style="list-style-type: none"> Incident Command Post Incident Base Camp (Identify by Name) Staging Area (Identify by Name) Joint Information Center Helispot (Location & Number) Helibase Mobile Relay <p>OPTIONAL</p> <p>BLUE</p> <ul style="list-style-type: none"> Police Station Telephone Fire Station Mobile Weather Unit Emergency Operations Center Fire Aid Section Hospital 	<p>ORANGE</p> <ul style="list-style-type: none"> Oil Spread Prediction <p>BLACK</p> <ul style="list-style-type: none"> Actual Oil or Chemical Plume <p>BLACK</p> <ul style="list-style-type: none"> Branches (Initially numbered clockwise from Incident origin) Divisions (Initially lettered clockwise from Incident origin) Division Boundary Branch Boundary Wind Speed and Direction <p>Safety/Security Zone</p> <p>Boat Ramp</p> <p>All overlays must contain registration marks. These may consist of identified road intersections township/range coordinates, map corners etc.</p>
TO BE USED ON INCIDENT BRIEFING AND ACTION PLAN MAPS/CHARTS	

Common Operational Picture Standardization

- ▣ Map Labels
- ▣ Map Symbology (Beyond the IMH)
- ▣ GIS File Format – ESRI Shapefile
- ▣ GIS File Names
- ▣ Feature Attribute Field Names and Properties
- ▣ How Do We Make This Happen?
- ▣ Who Takes the Lead?
 - Federal Gov't?

THANK YOU

judd.muskat@wildlife.ca.gov