

A scenic landscape photograph of a river valley. In the foreground, there are several tall, dark green evergreen trees. The middle ground shows a winding river flowing through a valley, surrounded by dense forests. In the background, there are rugged mountains under a blue sky with scattered white clouds. The text is overlaid on the upper portion of the image.

February 25, 2015

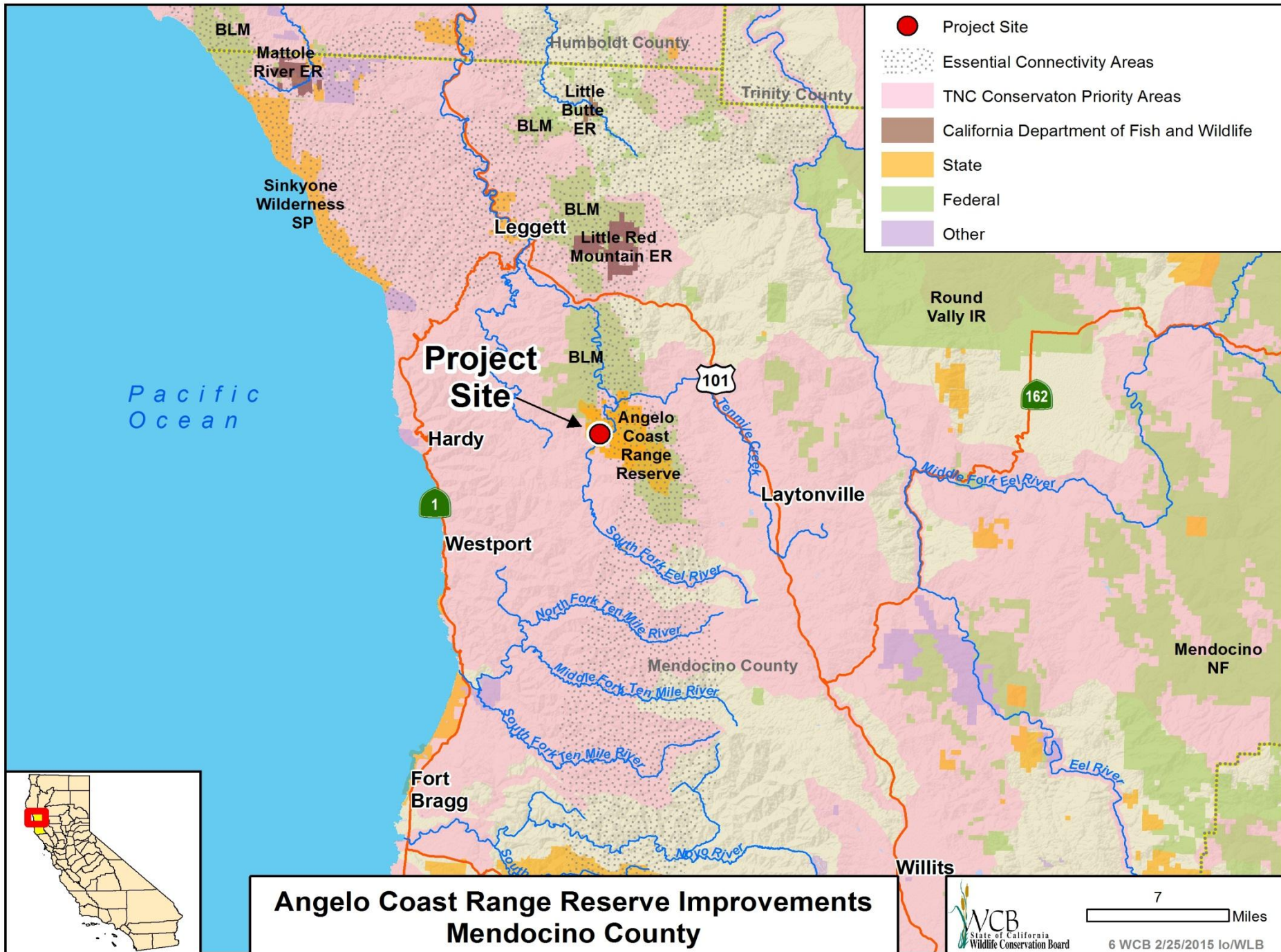
10:00am

Wildlife Conservation Board Meeting

Legislative Office Building,

1020 N Street, Room 100

Sacramento, California 95814



#6. Angelo Coast Range Reserve Improvements



- Headquarters house will be replaced with 1500 sq. ft. kitchen and dining hall

#6. Angelo Coast Range Reserve Improvements



- New 8-bed bunkhouse and location of an additional 8-bed bunkhouse

#6. Angelo Coast Range Reserve Improvements

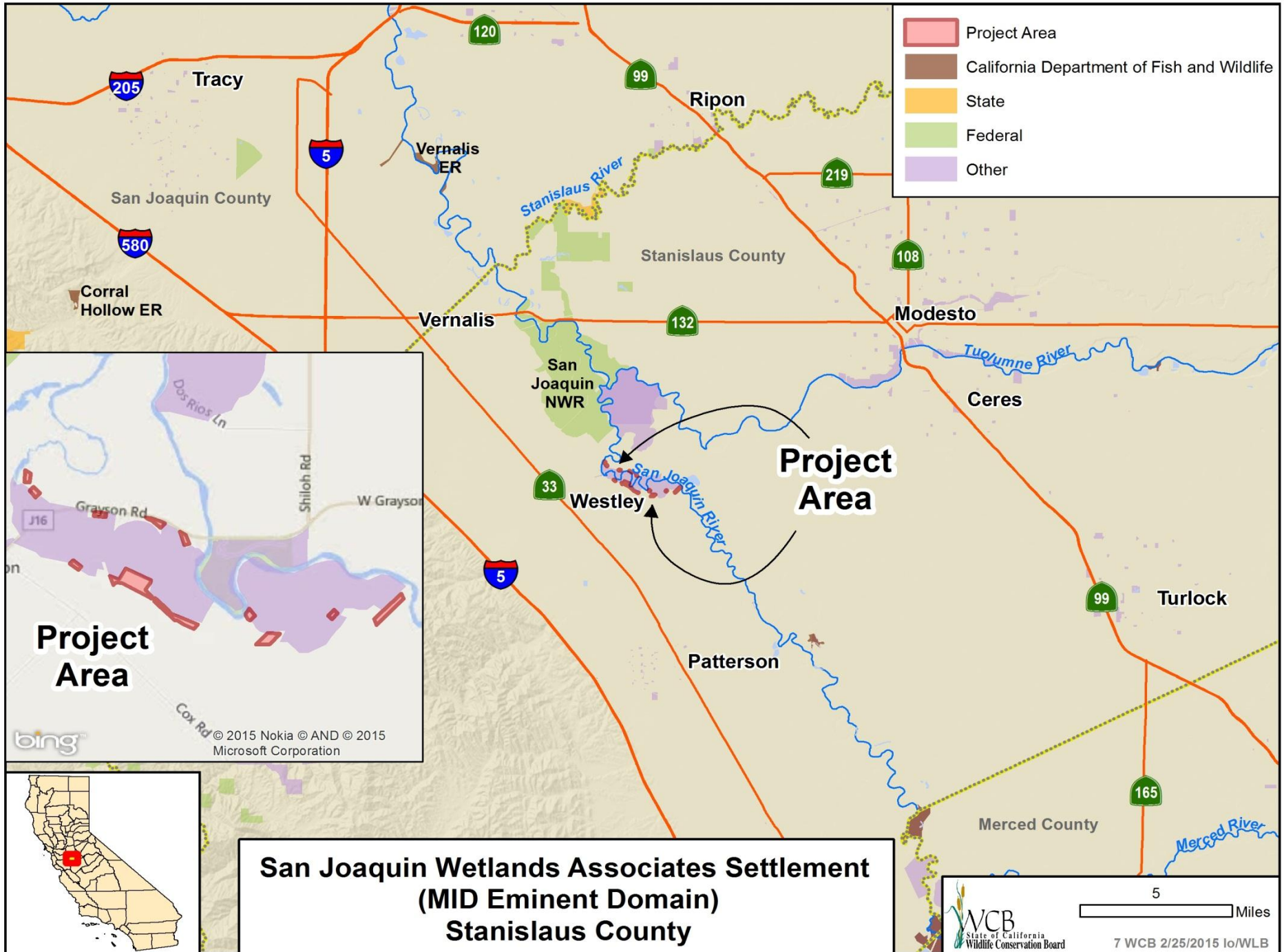


- Location of future 8-bed bunkhouse

#6. Angelo Coast Range Reserve Improvements



- ADA accessible walkway to be expanded linking all new structures



#7. San Joaquin Wetlands Associates Settlement (MID Eminent Domain)



- Power lines over existing conservation easement property



Disclaimer: Boundaries are approximate.

0 875 1,750 Feet

San Joaquin Wetland Farms Easement Map



Proposed New CDFW Easement Boundary in White

Parcels Not Available, Power Line

Other Conserved Land

NRCS Flood

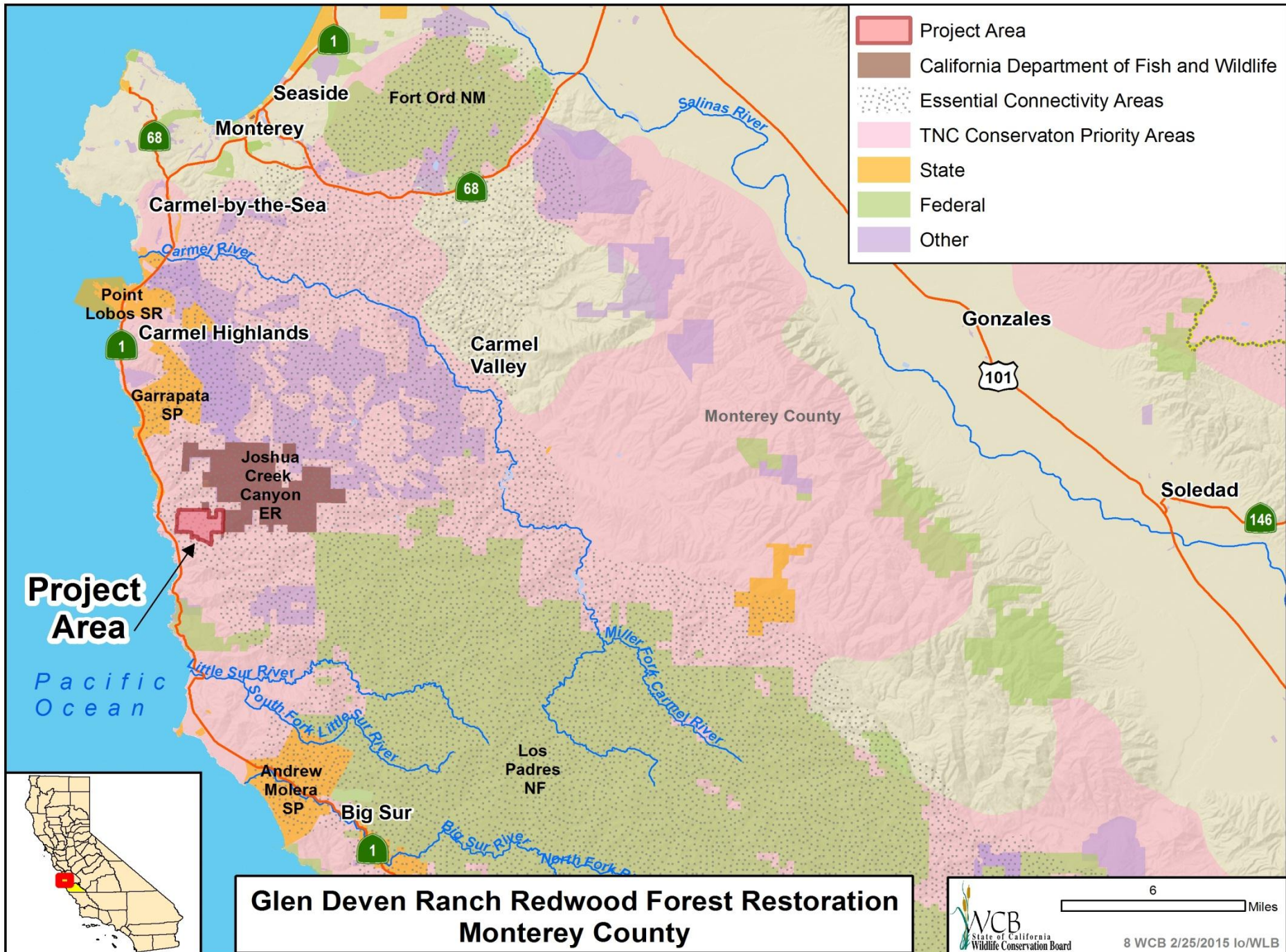
Field 5 (23 Acres)

Currently Managed Field 5 Wetlands (5.06 Acres)

#7. San Joaquin Wetlands Associates Settlement (MID Eminent Domain)



- Typical habitat on existing easements that are contiguous with the new conservation easements



#8. Glen Deven Redwood Forest Restoration



- Eucalyptus to be removed

#8. Glen Deven Redwood Forest Restoration



- Steep slope and dense stands of Eucalyptus

#8. Glen Deven Redwood Forest Restoration

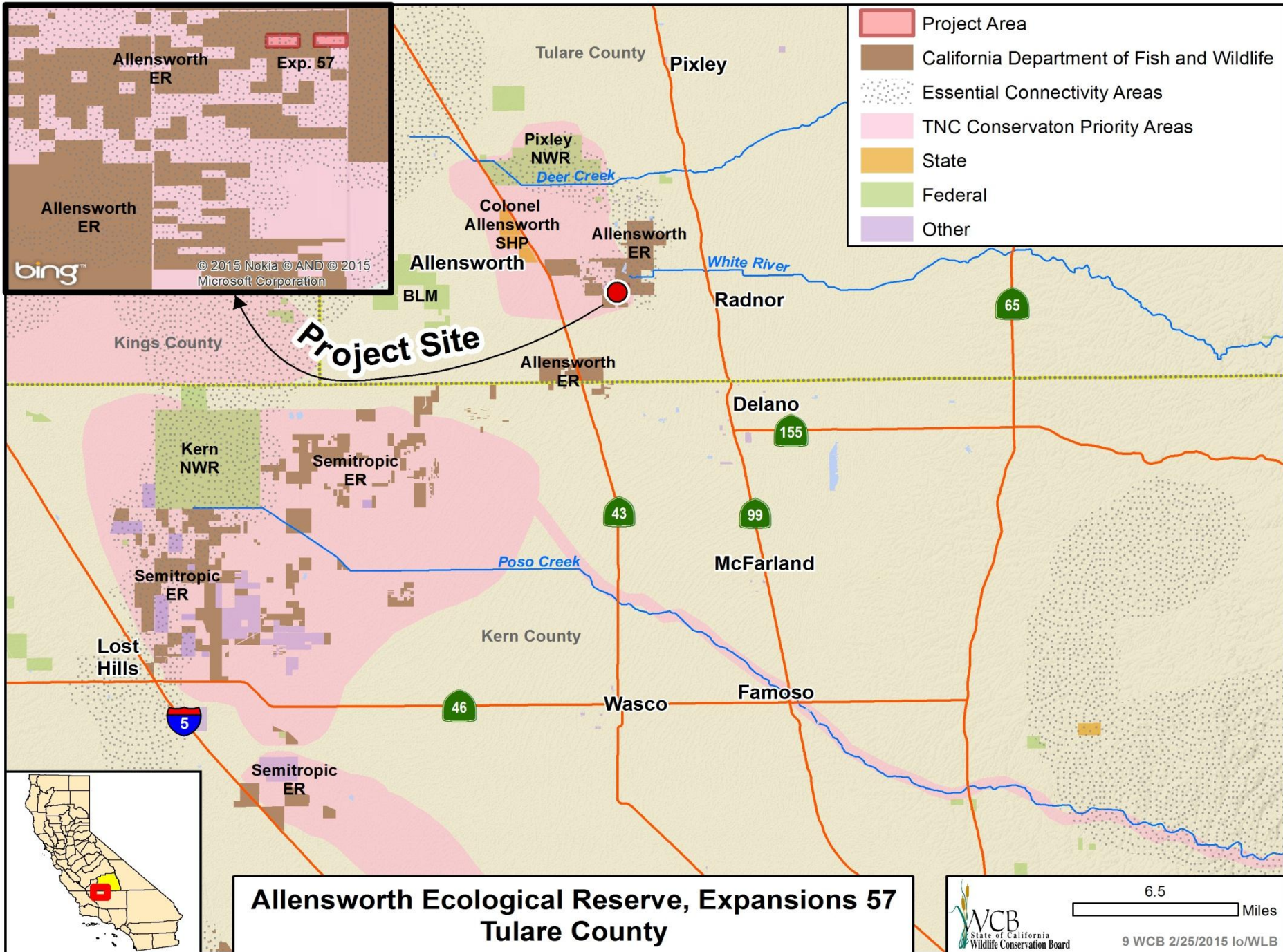


■ Eucalyptus

#8. Glen Deven Redwood Forest Restoration



- The objective, earlier phase of the project post-harvest



Allensworth Ecological Reserve, Expansions 57 Tulare County

#9. Allensworth Ecological Reserve, Expansion 57



- San Joaquin kit fox

#9. Allensworth Ecological Reserve, Expansion 57



- Tipton Kangaroo Rat

#9. Allensworth Ecological Reserve, Expansion 57



- Blunt-Nosed Leopard Lizard

#9. Allensworth Ecological Reserve, Expansion 57

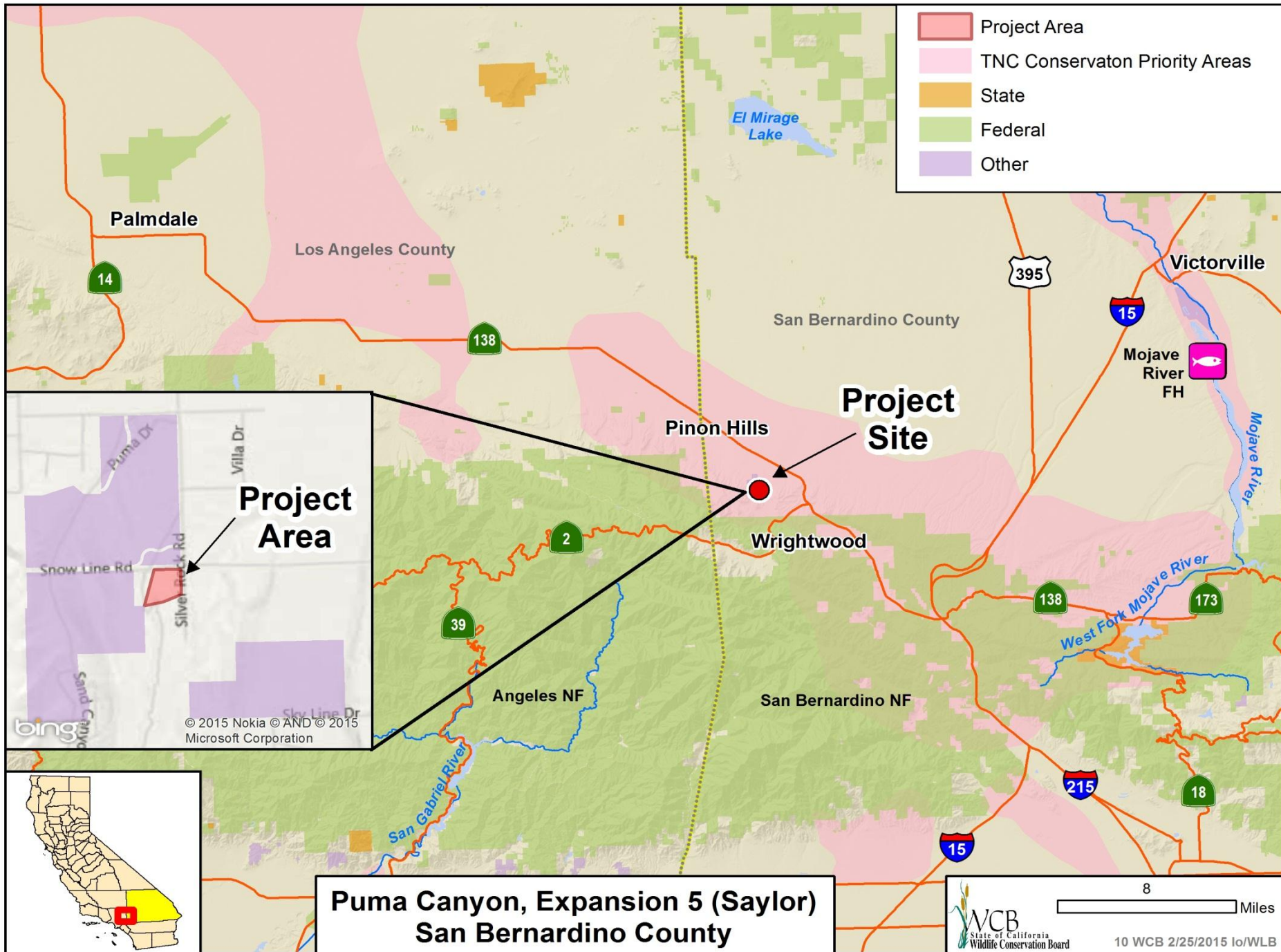


■ View looking south

#9. Allensworth Ecological Reserve, Expansion 57



■ View looking west



#10. Puma Canyon, Expansion 5 (Saylor)



#10. Puma Canyon, Expansion 5 (Saylor)

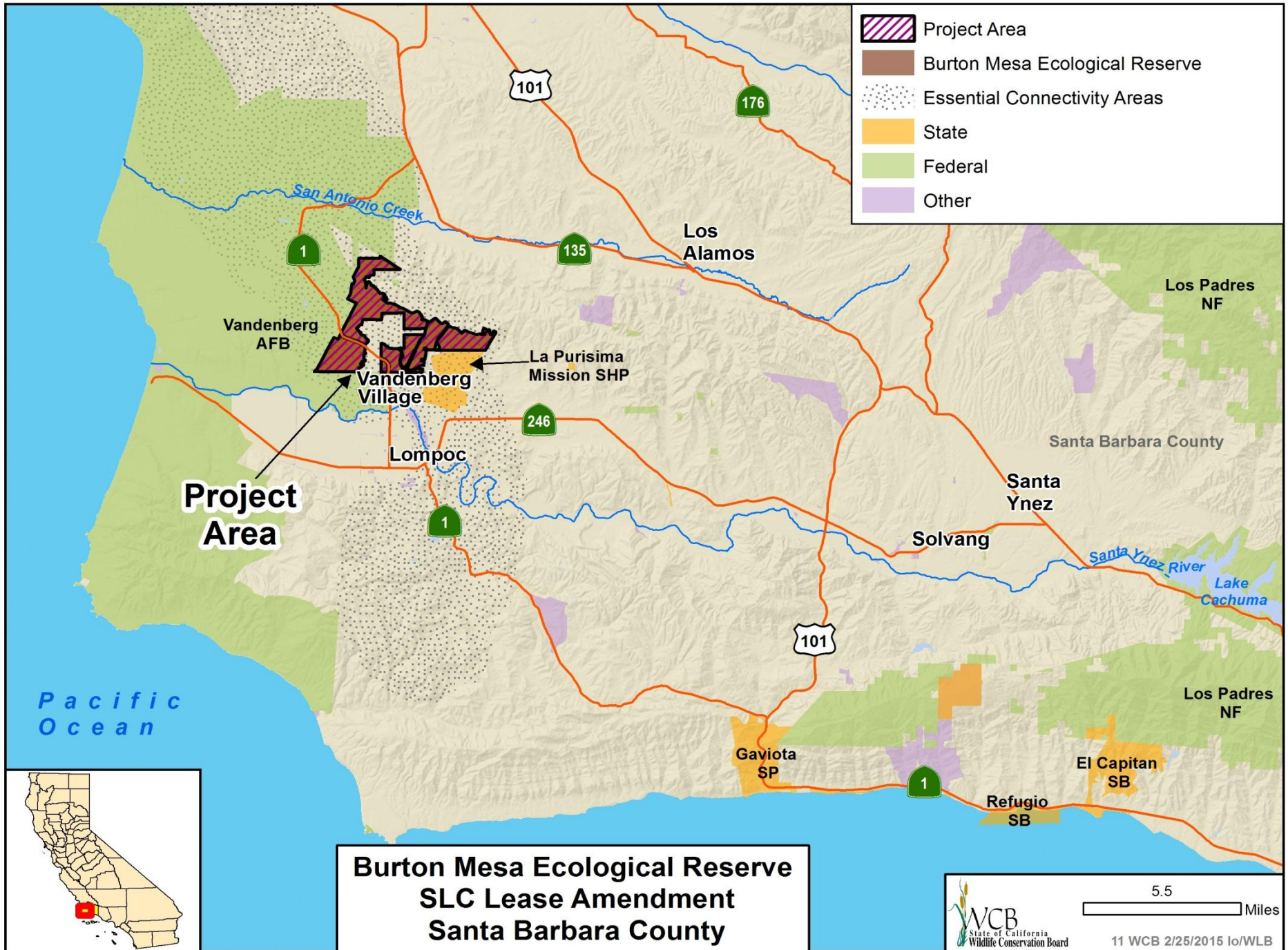


#10. Puma Canyon, Expansion 5 (Saylor)



#10. Puma Canyon, Expansion 5 (Saylor)



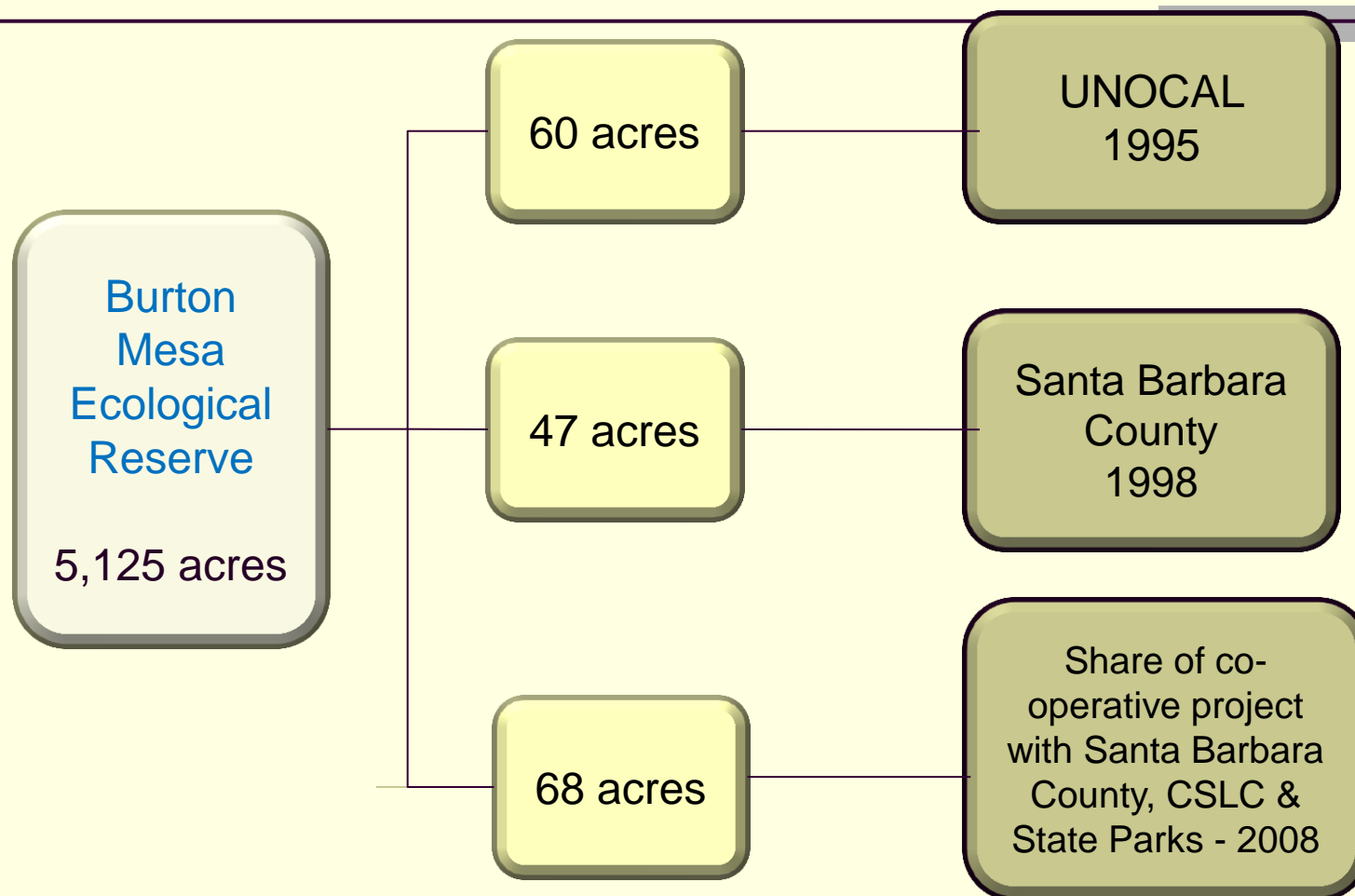


- Project Area
- Burton Mesa Ecological Reserve
- Essential Connectivity Areas
- State
- Federal
- Other

**Burton Mesa Ecological Reserve
SLC Lease Amendment
Santa Barbara County**

Burton Mesa Ecological Reserve

Historical Background



#11. Burton Mesa Ecological Reserve, SLC Lease Amendment



- Interior view of the 47 acre parcel

#11. Burton Mesa Ecological Reserve, SLC Lease Amendment

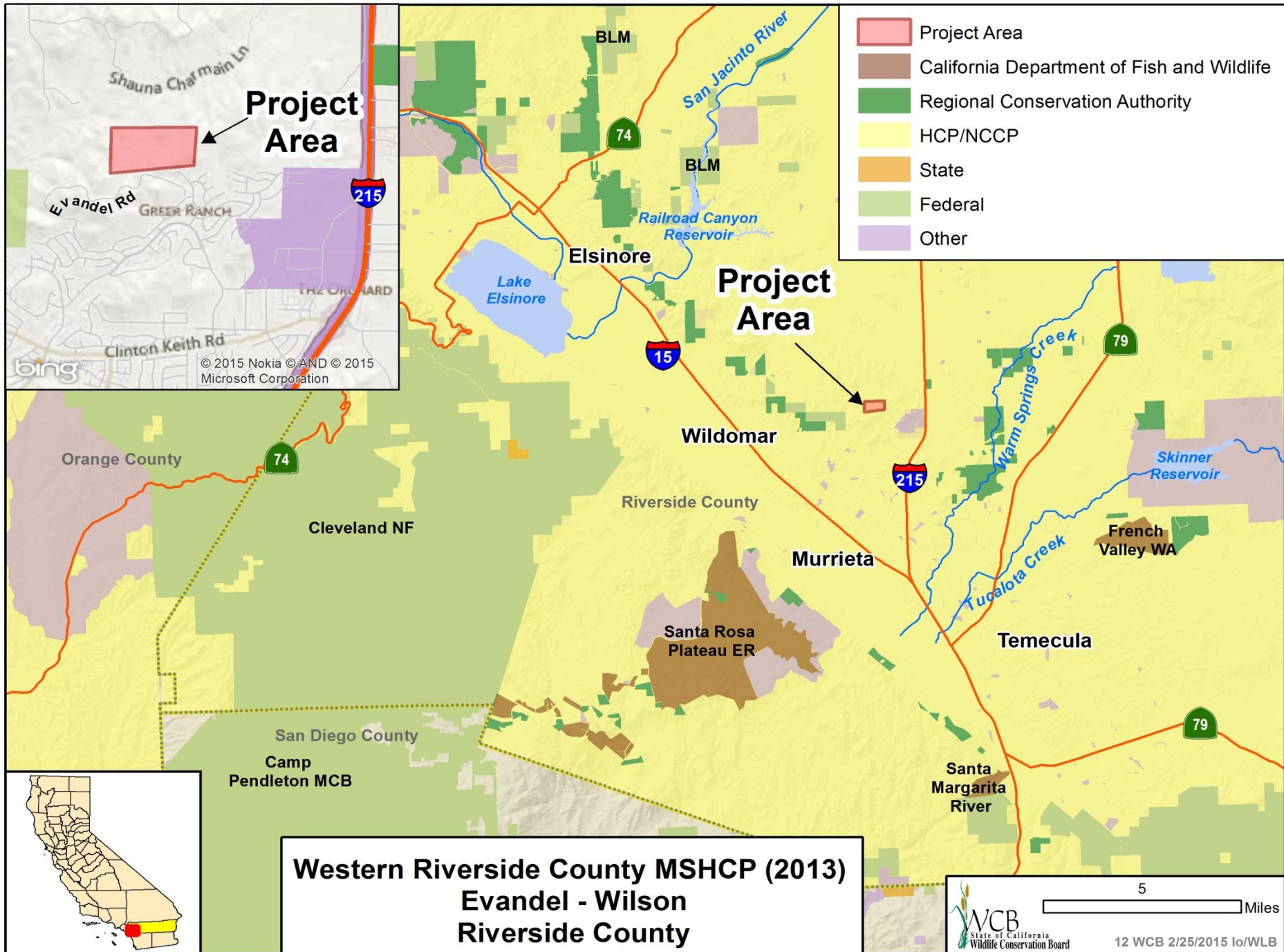


- North view of the 60 acre parcel

#11. Burton Mesa Ecological Reserve, SLC Lease Amendment



- View of the western side of the 68 acre parcel



#12. Western Riverside MSHCP (2013), Evandel-Wilson



Photo courtesy of the Western Riverside
County Regional Conservation Authority

- View of the Evandel – Wilson Property located in the Western Core/Linkage target area of the Western Riverside County Multi-Species Habitat Conservation Plan

#12. Western Riverside MSHCP (2013), Evandel-Wilson



Photo courtesy of the Western Riverside
County Regional Conservation Authority

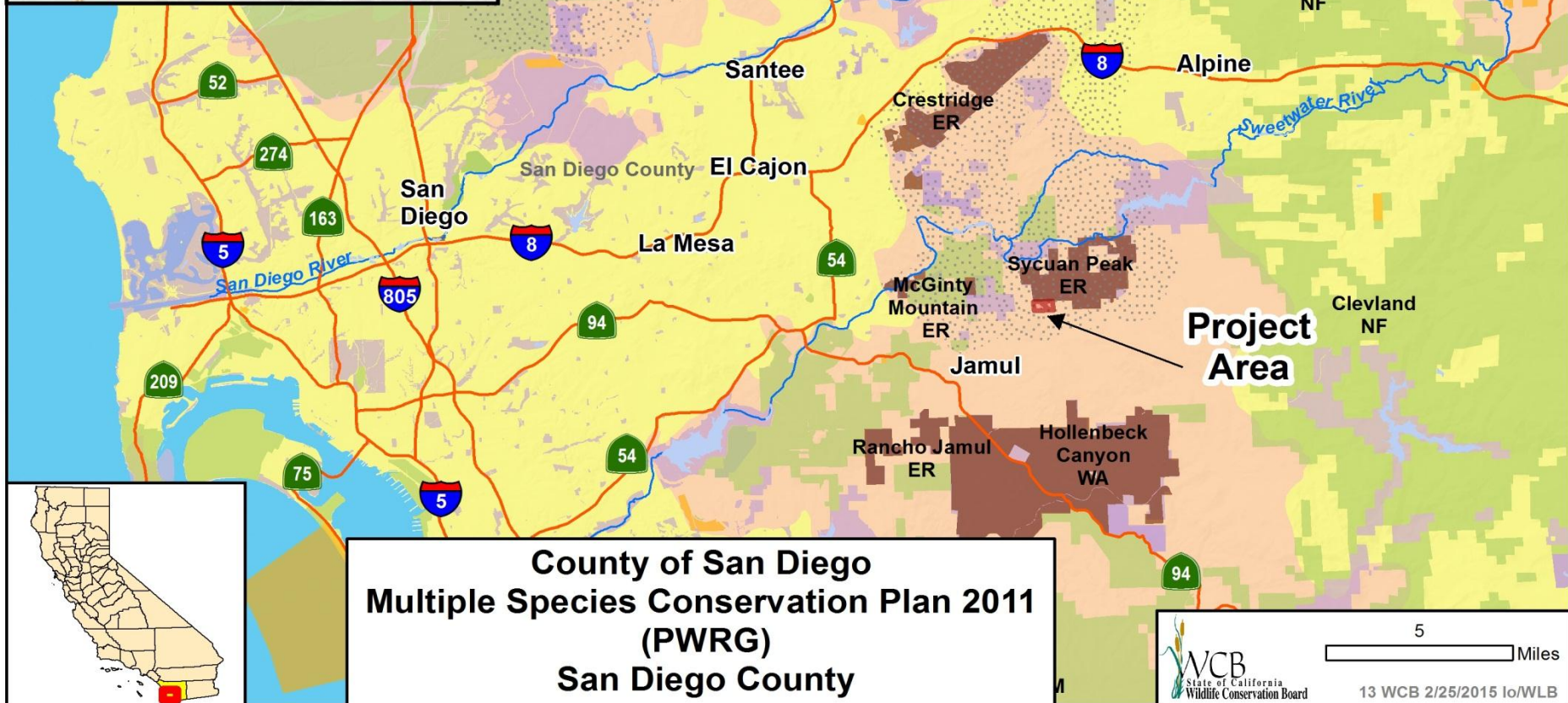
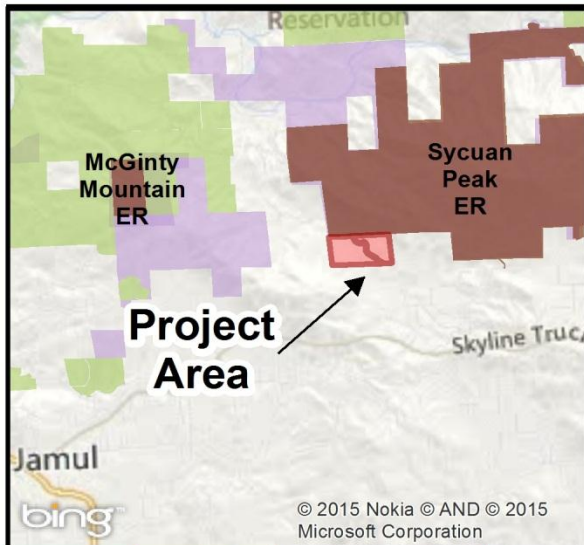
- The Evandel – Wilson property is located in a Rural Mountainous zone. Prior to its acquisition, the property could have been divided into eight possible homesites.

#12. Western Riverside MSHCP (2013), Evandel-Wilson



Photo courtesy of the Western Riverside
County Regional Conservation Authority

- This parcel will provide habitat for State and federally listed species such as the least Bell's vireo, southwestern willow flycatcher, Stephen's kangaroo rat and others.



#13. County of San Diego Multiple Species Conservation Plan 2011 (PWRG)



#13. County of San Diego Multiple Species Conservation Plan 2011 (PWRG)

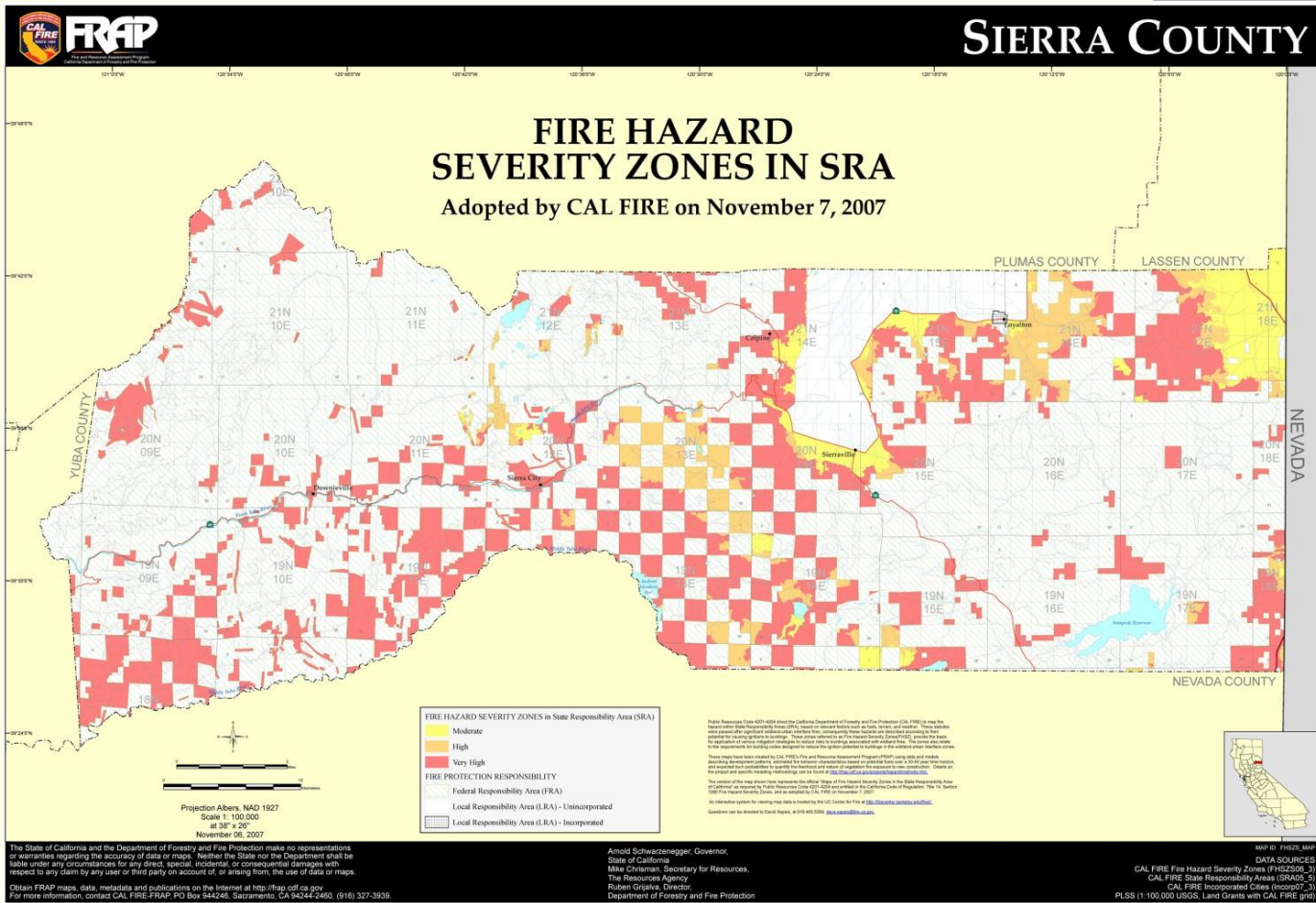


#14. Independence Lake Forest Enhancement



- Forest with high fuel loads

#14. Independence Lake Forest Enhancement



- CalFire Fire Hazard Severity Zones for Sierra County

#14. Independence Lake Forest Enhancement

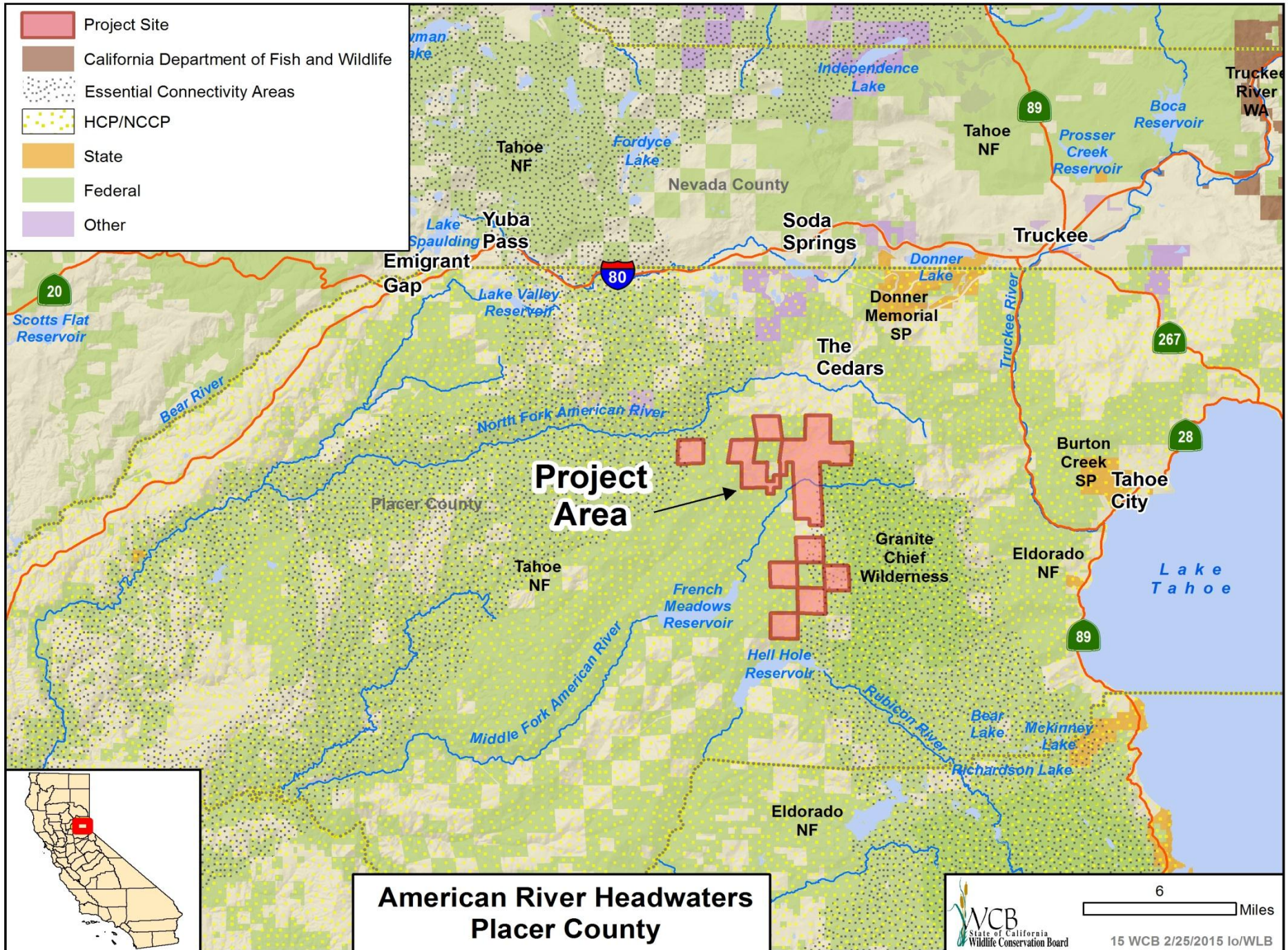


■ Pre-thinning

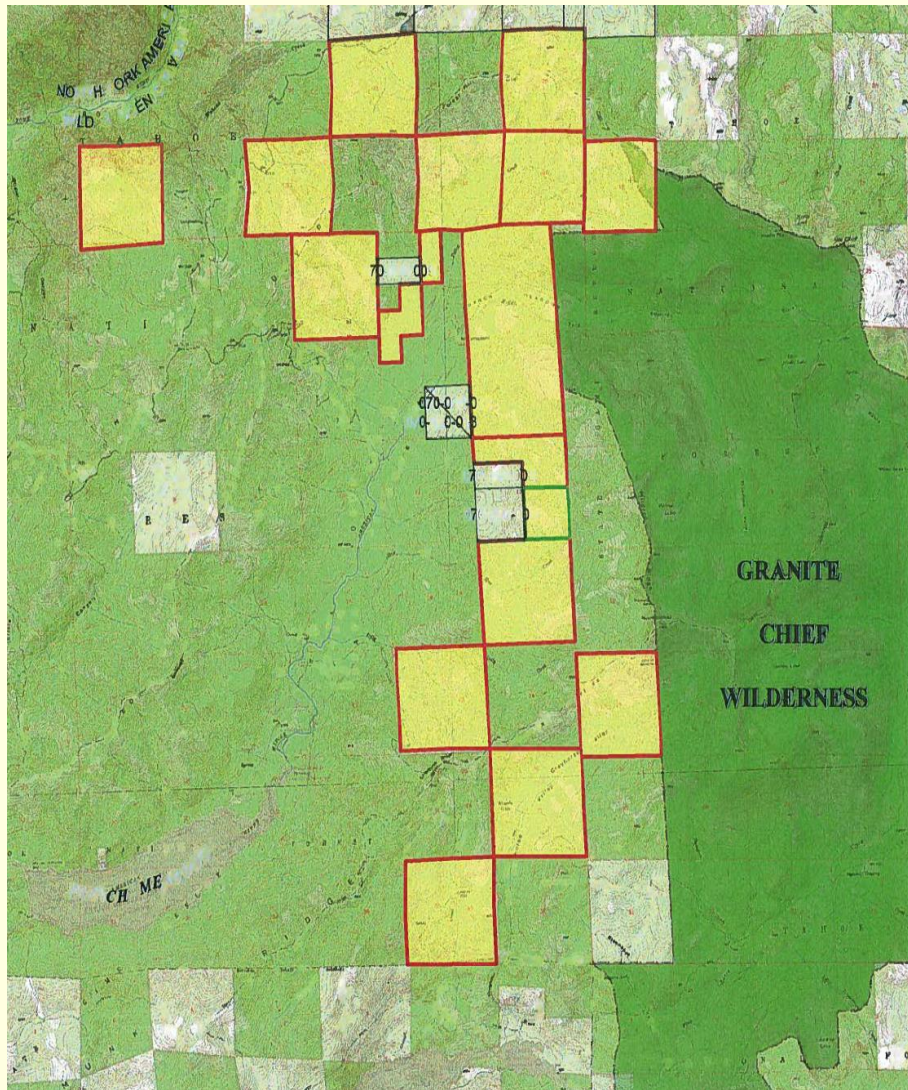
#14. Independence Lake Forest Enhancement



- Same location post-thinning



#15. American River Headwaters



- The Property is comprised of 17 parcels that form a fractured checkerboard appearance.

#15. American River Headwaters



Photo courtesy of American River Conservancy

- Grayhorse Creek (Section 25)

#15. American River Headwaters



- There are five blue ribbon trout streams that collectively produce over 4,200 native young rainbow trout per mile

#15. American River Headwaters



- Talbot Creek (Section 35)

Photo courtesy of American River Conservancy

#15. American River Headwaters



Photo courtesy of American River Conservancy

- Mountain Meadow (Section 1)

#15. American River Headwaters

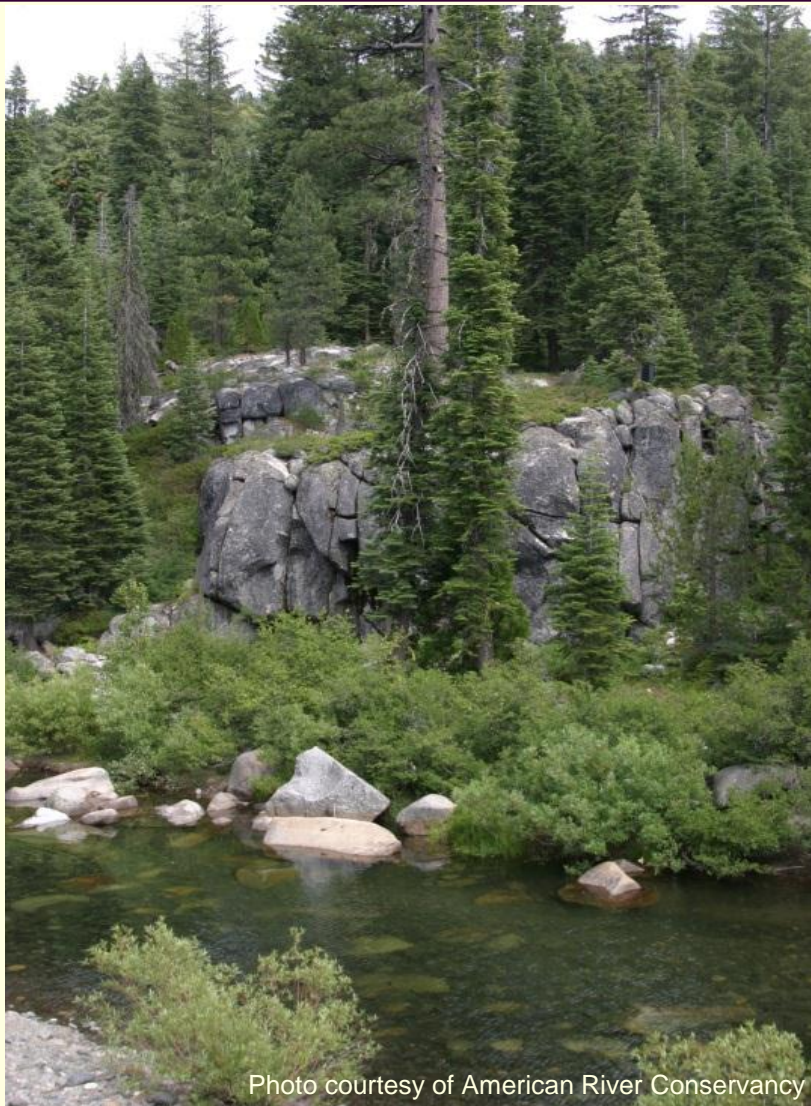
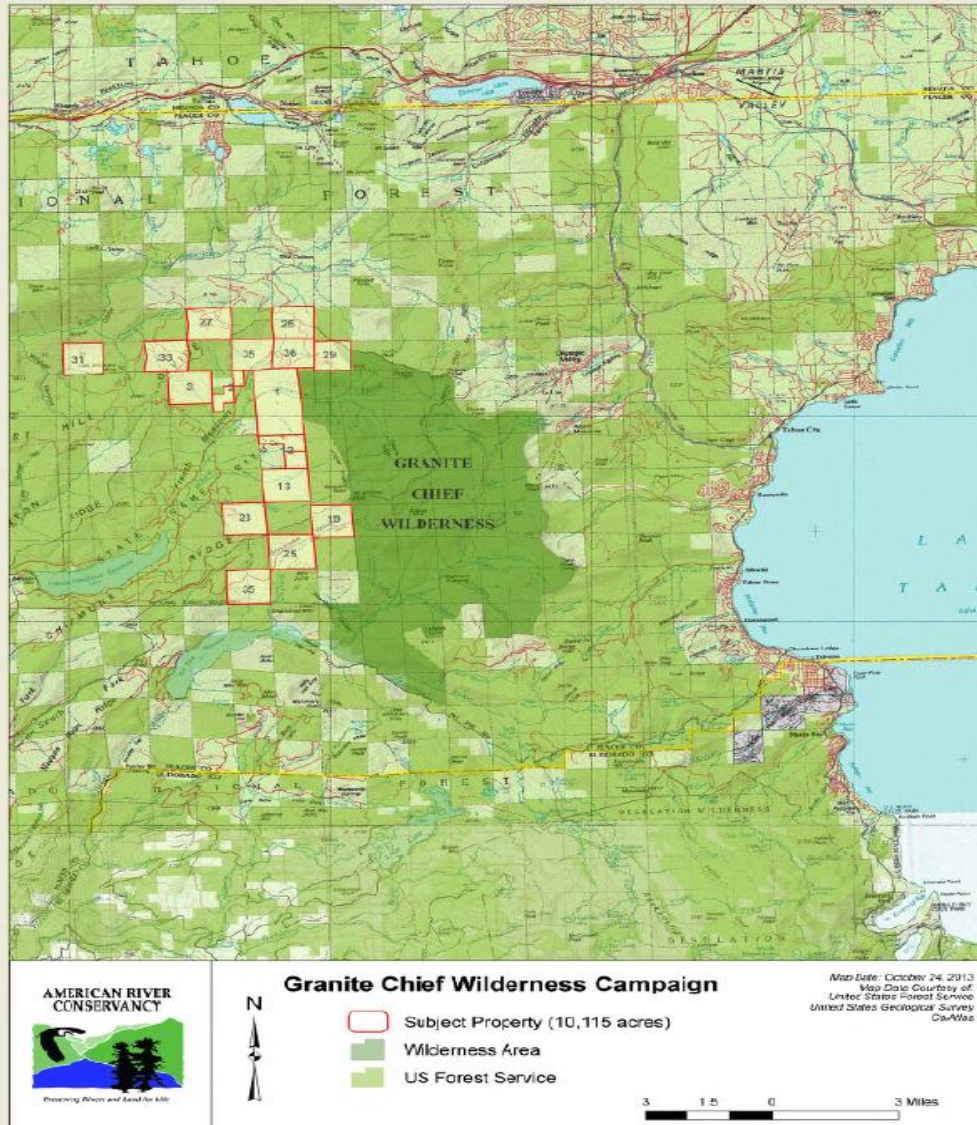


Photo courtesy of American River Conservancy

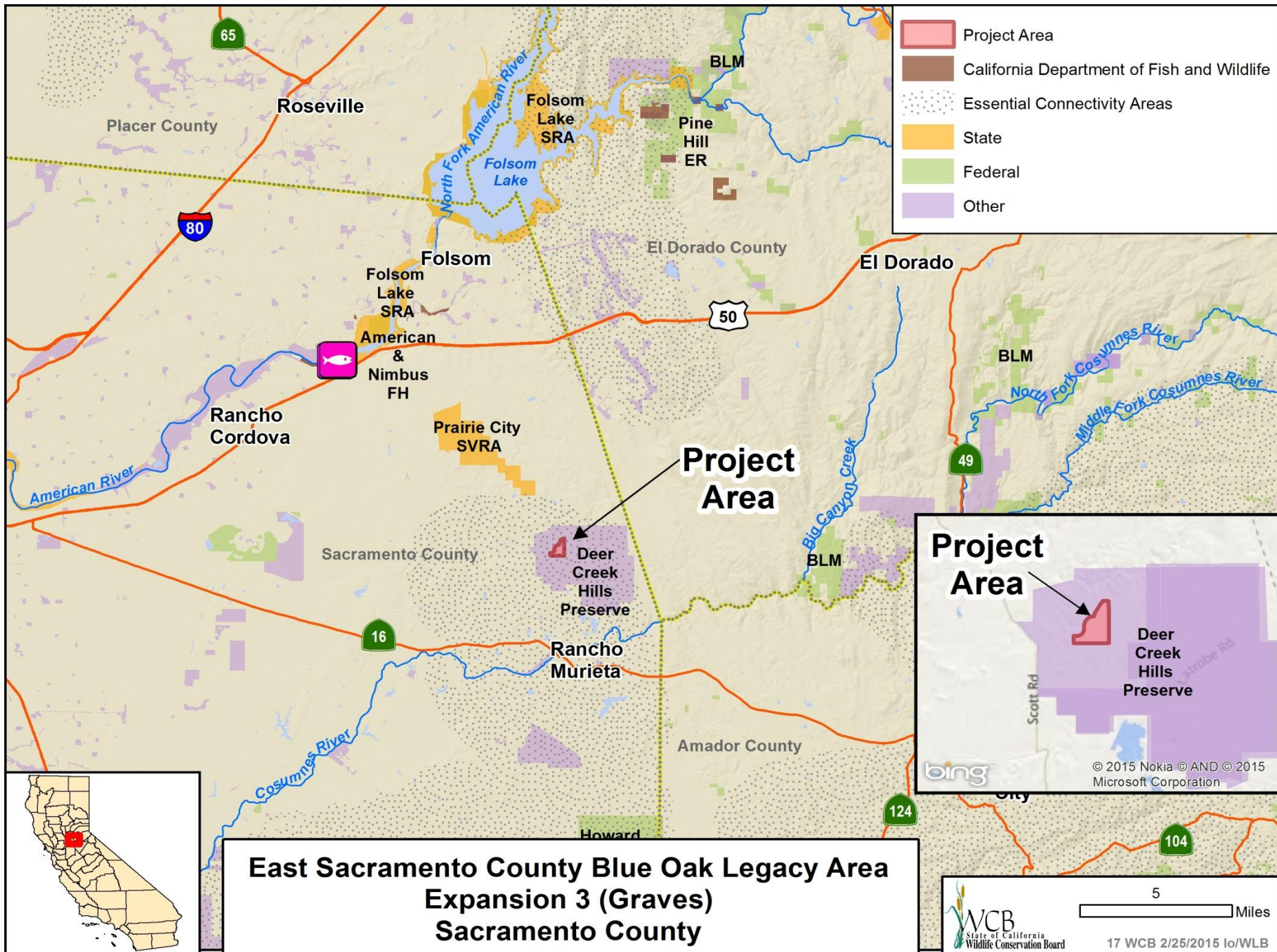
- Upper Middle Fork
(Section 1)

#15. American River Headwaters

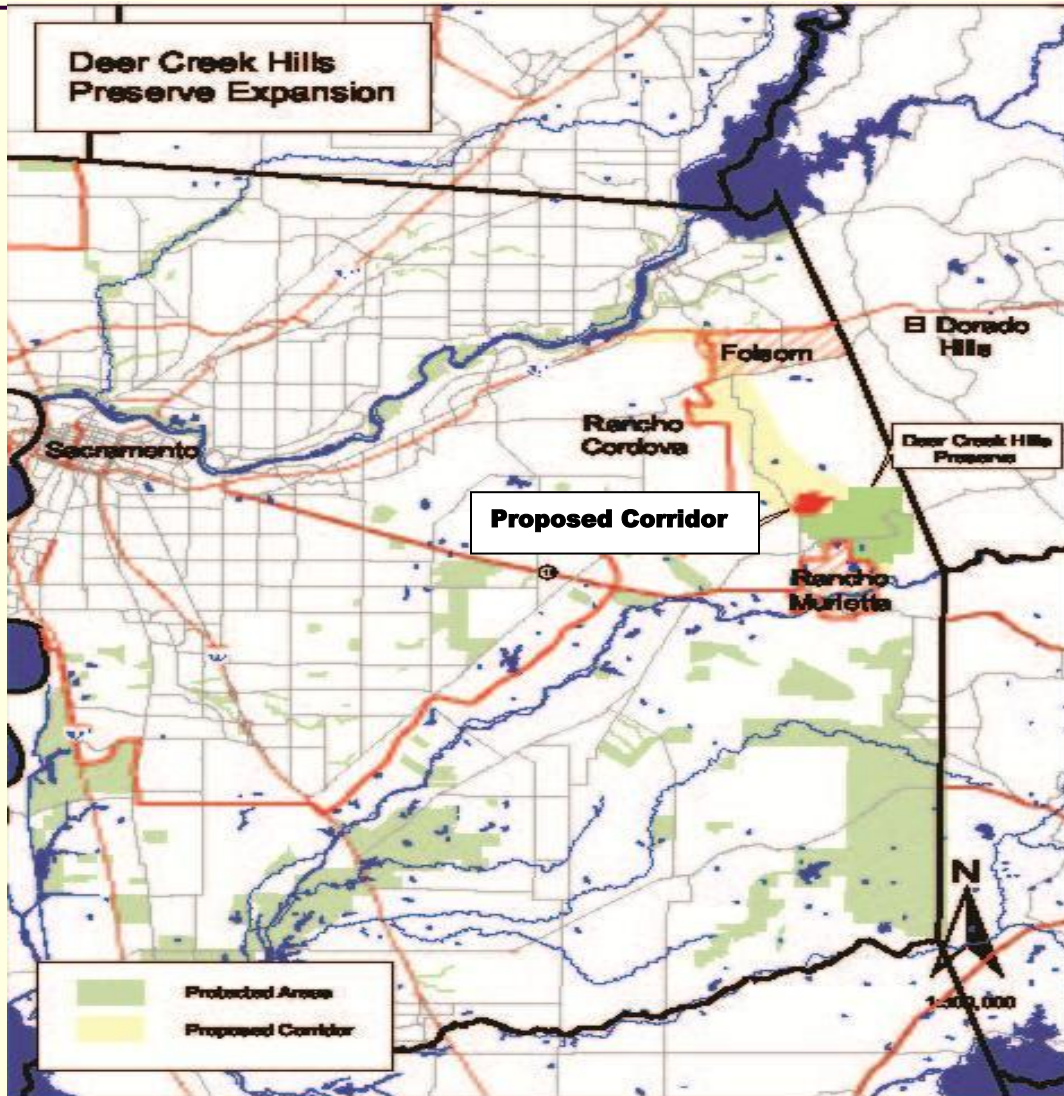


#16. Napa-Sonoma Marshes Wildlife Area
Lower Napa River Unit, Ponds 6, 6A, 7, 7A and 8

- **This Project was withdrawn from consideration at this time.**



#17. East Sacramento County Blue Oak Legacy Area, Expansion 3 (Graves)



#17. East Sacramento County Blue Oak Legacy Area, Expansion 3 (Graves)



- Easterly view of the property with a small barn in the background

#17. East Sacramento County Blue Oak Legacy Area, Expansion 3 (Graves)



- Southerly view of the property with oak savannah

#17. East Sacramento County Blue Oak Legacy Area, Expansion 3 (Graves)





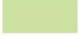



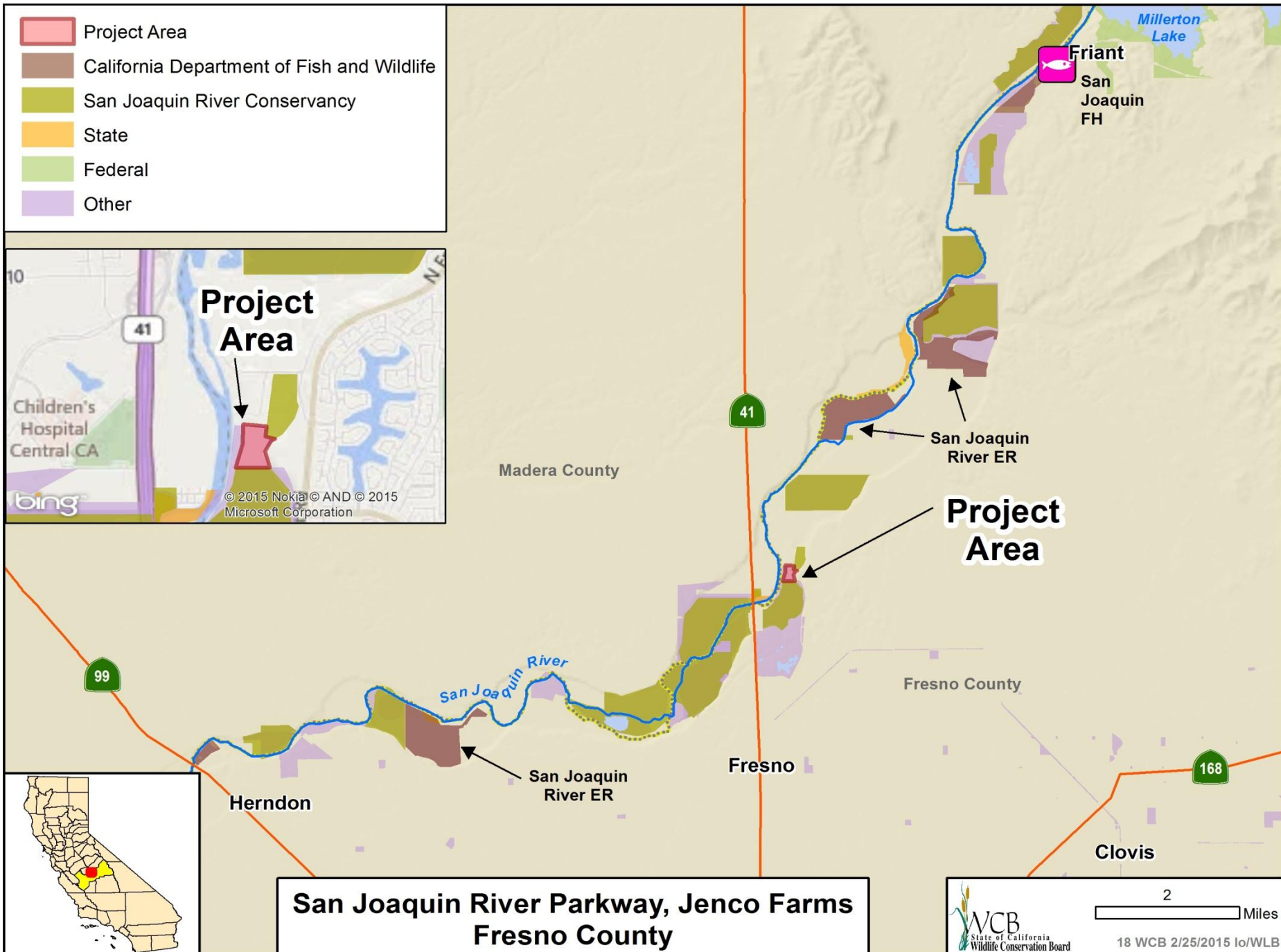
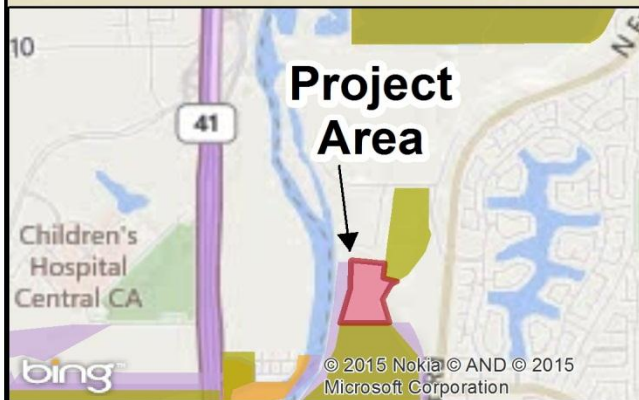
- Westerly view of the property with a permanent pond in the background

#17. East Sacramento County Blue Oak Legacy Area, Expansion 3 (Graves)



- Youth group participating in the YES (Youth, Education, and Stewardship) program administered on the Deer Creek Hills Preserve

-  Project Area
-  California Department of Fish and Wildlife
-  San Joaquin River Conservancy
-  State
-  Federal
-  Other



#18. San Joaquin River Parkway, Jenco Farms



#18. San Joaquin River Parkway, Jenco Farms



#18. San Joaquin River Parkway, Jenco Farms

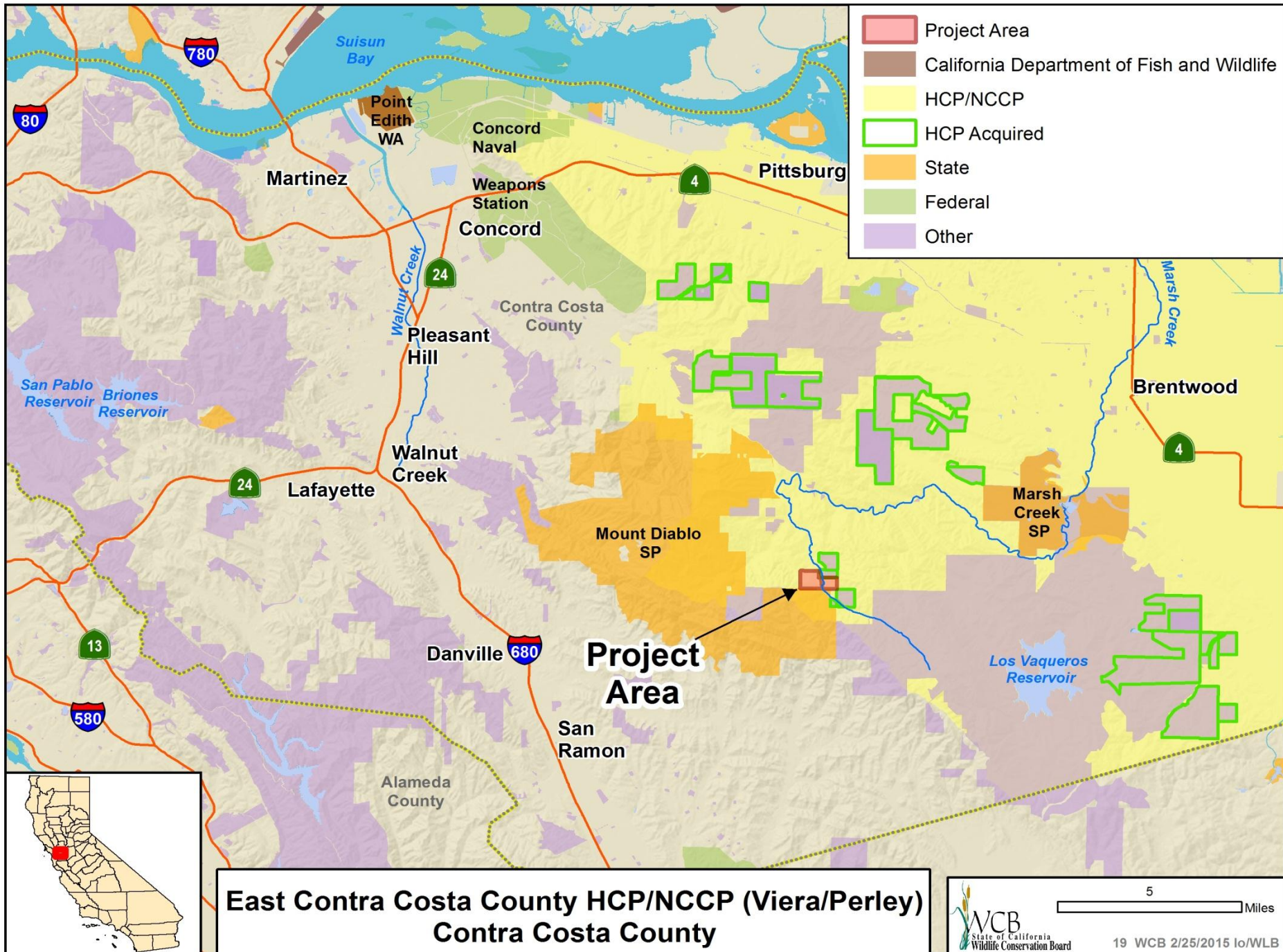


#18. San Joaquin River Parkway, Jenco Farms



#18. San Joaquin River Parkway, Jenco Farms





#19. East Contra Costa County NCCP/HCP (Viera/Perley)



- Grassland and oak woodland

#19. East Contra Costa County NCCP/HCP (Viera/Perley)



- Young oak woodland

#19. East Contra Costa County NCCP/HCP (Viera/Perley)



■ View of Mount Diablo

#19. East Contra Costa County NCCP/HCP (Viera/Perley)



- Oak savanna, oak woodland and grassland on the eastern portion of the property



#20. Santa Cruz and Santa Rosa Islands Habitat Enhancement



- Santa Cruz Island: Landscape recovering from past vegetation impacts

#20. Santa Cruz and Santa Rosa Islands Habitat Enhancement



- Santa Rosa Island, rare Torrey Pines

#20. Santa Cruz and Santa Rosa Islands Habitat Enhancement



- Helicopter-assisted weed surveys and eradication

#20. Santa Cruz and Santa Rosa Islands Habitat Enhancement



- Staff treating Pampas grass

#20. Santa Cruz and Santa Rosa Islands Habitat Enhancement



- Vegetation mapping, study plots

#20. Santa Cruz and Santa Rosa Islands Habitat Enhancement



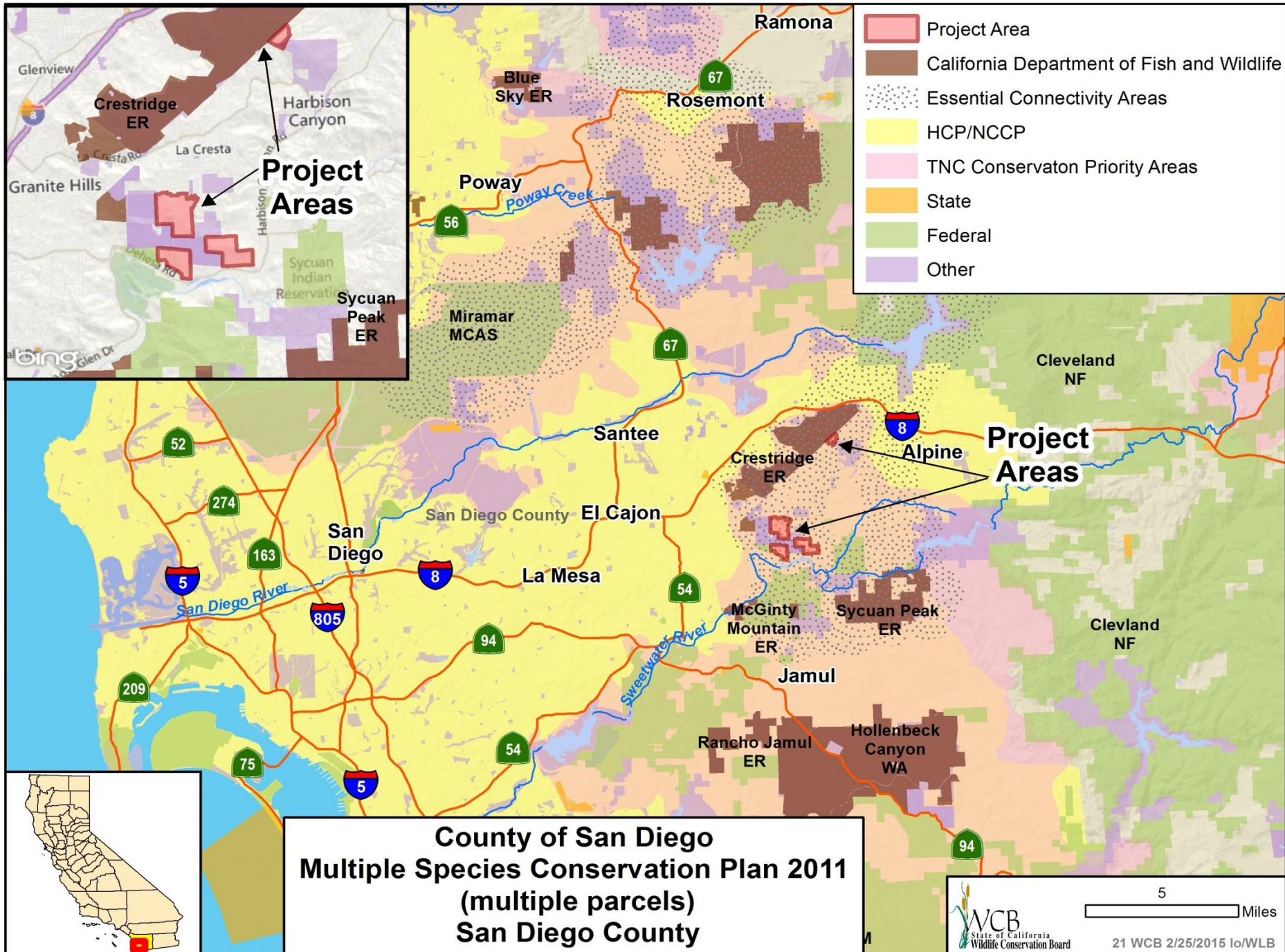
- Pampas grass removal before and after. In 2014, site is covered with rare stream orchids, post-treatment.

#20. Santa Cruz and Santa Rosa Islands Habitat Enhancement



- Endemic Santa Cruz Island fox

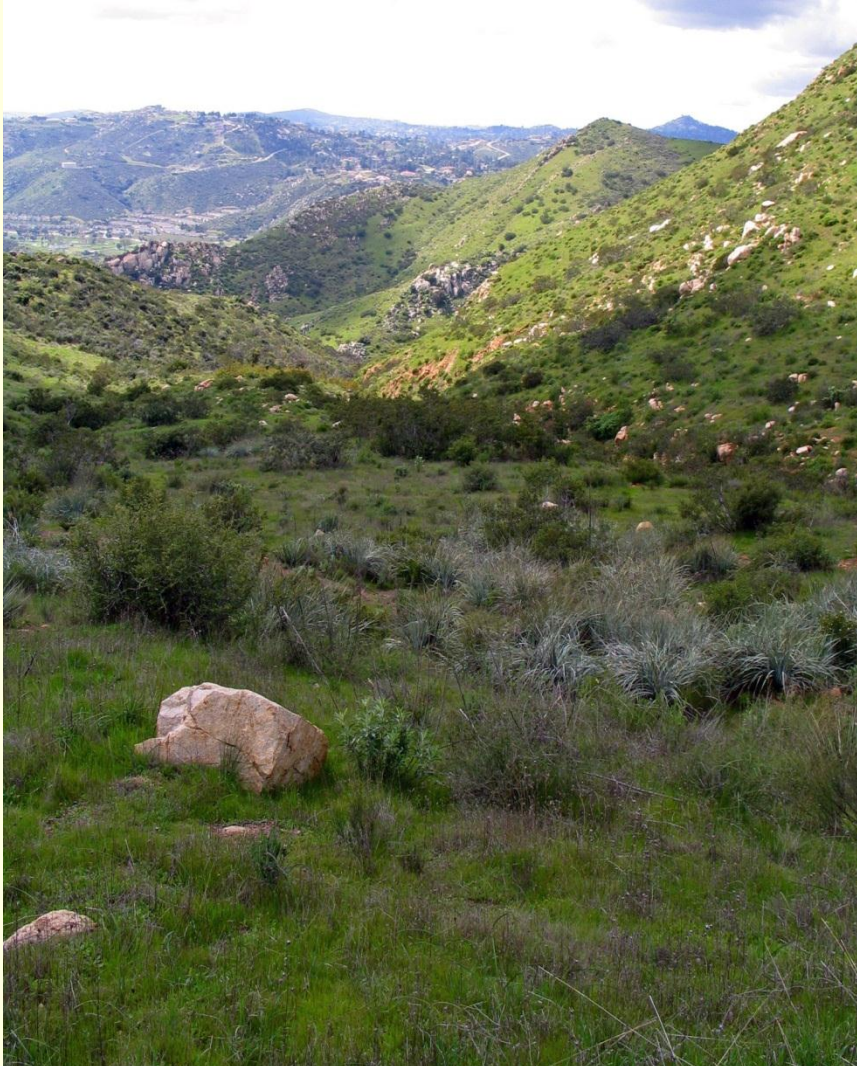
Photo courtesy of Stephen Francis



#21. County of San Diego Multiple Species Conservation Plan 2011 (multiple parcels)



#21. County of San Diego Multiple Species Conservation Plan 2011 (multiple parcels)



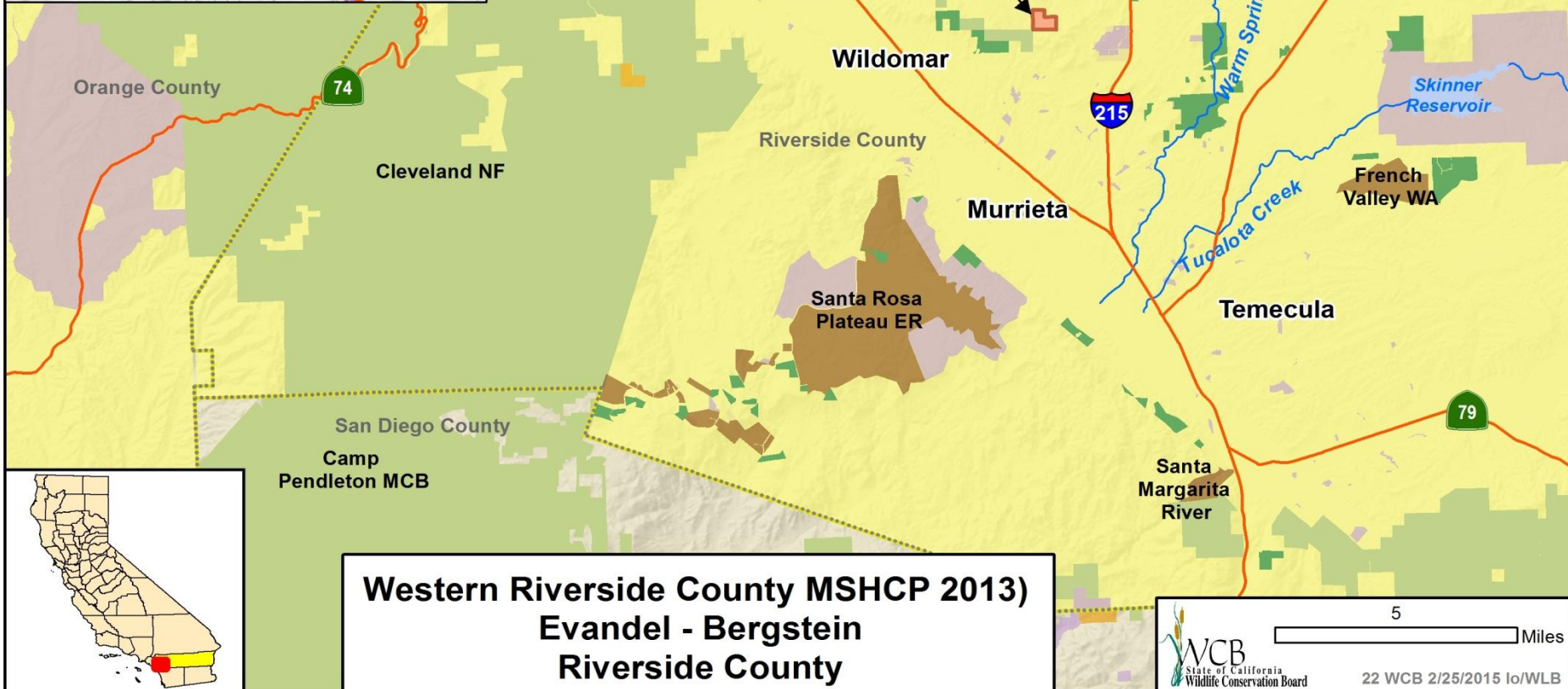
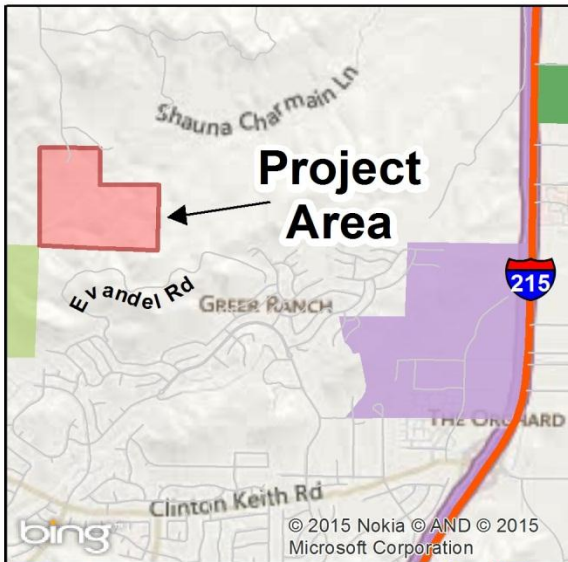
#21. County of San Diego Multiple Species Conservation Plan 2011 (multiple parcels)



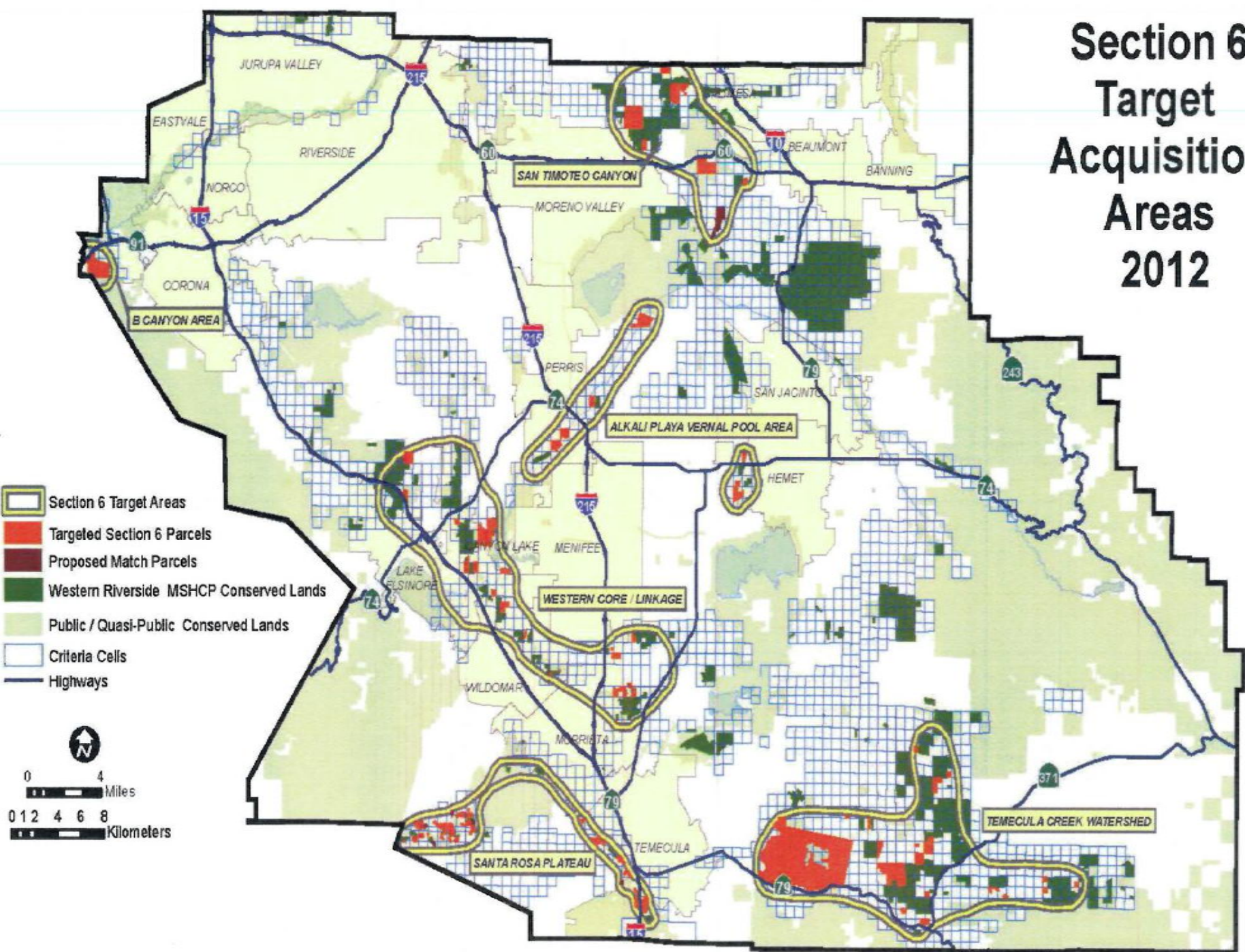
- State endangered Dehesa bear grass found on property

#21. County of San Diego Multiple Species Conservation Plan 2011 (multiple parcels)

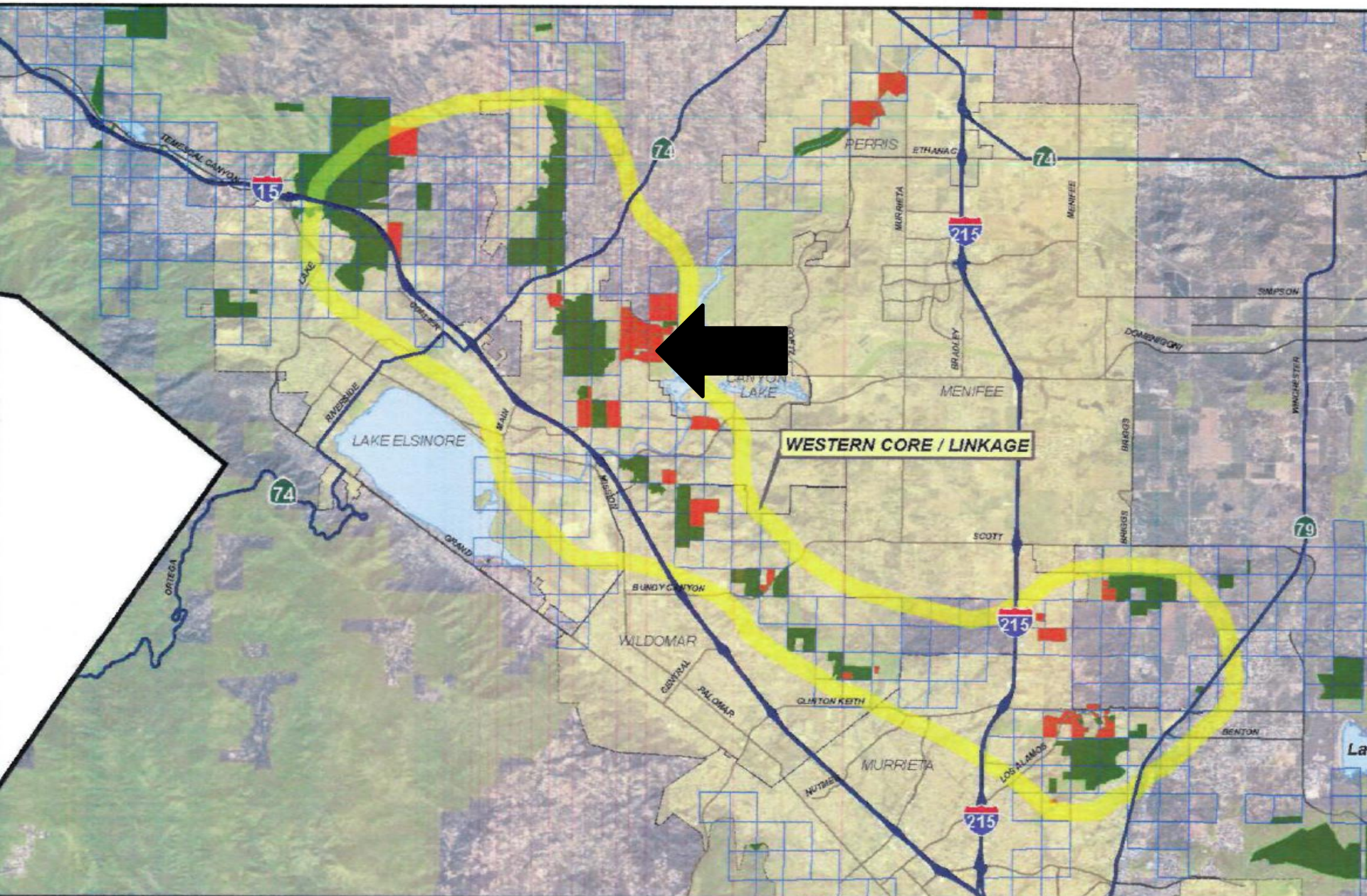




Section 6 Target Acquisition Areas 2012



Western Core / Linkage



#22. Western Riverside MSHCP (2013) Evandel - Bergstein



- Evandel-Bergstein property as seen from Evandel Road

#22. Western Riverside MSHCP (2013) Evandel - Bergstein

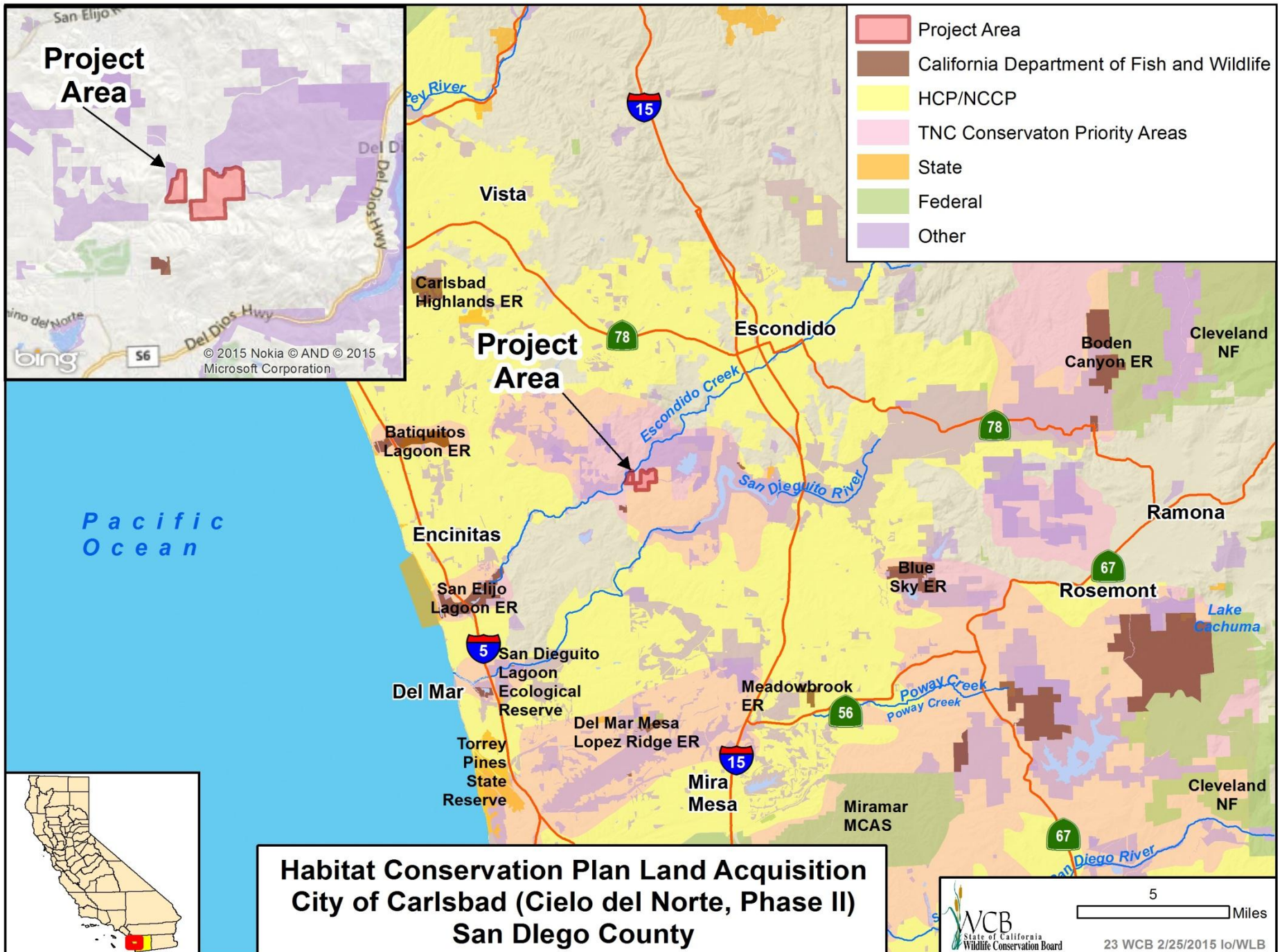


- The topography of property is typical of properties located in Western Core Linkage area of the Multi-Species plan. The property is covered with coastal sage scrub and other native plants on a gently sloping to steep terrain.

#22. Western Riverside MSHCP (2013) Evandel - Bergstein



- Closer view of the native grasses and bushes on the property



#23. Habitat Conservation Plan Land Acquisition, City of Carlsbad (Cielo del Norte, Phase II)



Photo courtesy of The Conservation Fund

- Oaks found on Property

#23. Habitat Conservation Plan Land Acquisition, City of Carlsbad (Cielo del Norte, Phase II)



- Riparian habitat found on property

#23. Habitat Conservation Plan Land Acquisition, City of Carlsbad (Cielo del Norte, Phase II)



#23. Habitat Conservation Plan Land Acquisition, City of Carlsbad (Cielo del Norte, Phase II)



- Wildlife found on property

2.2 Eligible Project Types

WCB will allocate Program funds to projects that enhance stream flows and are consistent with objectives and actions outlined in the California Water Action Plan, with emphasis on ecosystem restoration. Examples of potentially eligible project types are identified below. The examples should not be viewed as exhaustive lists of eligible project types. Specifics concerning eligible projects may vary and will be documented in the PSP.

- Water Transactions (e.g., changes to a stream's hydrograph through a lease, transfer, seasonal exchange)
 - Change of use petitions to benefit fish and wildlife
 - Surface and groundwater storage
 - Forbearance of water right
 - Changes in water management
 - Fans for frost protection
- Acquisition of water – permanent and long-term (not less than 20 years) dedications instream
- Habitat restoration projects (e.g., weed eradication, wet meadow restoration, forest thinning, etc.) that reshape stream hydrograph
- Studies to evaluate instream flow needs, identify priority streams or evaluate temperature needs
- Streamflow gauging
- Water efficiency generally – Irrigation efficiency and water infrastructure improvements (e.g., diversion, conveyance, and on farm projects) that save water and enable reshaping of the stream hydrograph
- Improved surface and ground water management
- Conjunctive use and groundwater storage banks
- Reconnecting flood flows with restored flood plains
- Reservoir operations both at existing and new storage sites

3.2.4 Project Selection and Evaluation Criteria

Proposals will be ranked according to procedures outlined in each PSP, which will include, among other criteria, all of the following:

- Clear project description with design, goals, milestones, tasks and timelines
- Clear demonstration of how the project will measurably enhance stream flows at a time and location necessary to provide fisheries or ecosystem benefits or improvements that improve upon existing flow conditions and are greater than required applicable environmental mitigation measures or compliance obligations
- Qualifications, experience, and capacity of the applicant to perform the proposed tasks
- Probability of success (e.g., does the proposal address site conditions, technologies, and projected future management to assure long-term success?)
- Habitat linkages
- Project significance (e.g., does the project provide long-term benefits to fish and wildlife, is it consistent with other conservation strategies?)
- Application addresses how global climate change might affect the project's long-term impacts or benefits
- Public support (e.g., does the project support regional plans, is there local community support through volunteer efforts or local in-kind commitment, is there public use?)

3.2.4 Project Selection and Evaluation Criteria cont...

- Project readiness (e.g., are landowners fully supportive, what is status of environmental review and permitting, is the water right transfer timeline reasonable, are there any outstanding issues (e.g., hazardous materials)?)
- Importance of prompt implementation (e.g., is there development risk, are there ongoing environmental concerns that will be exacerbated if nothing is done now, are there other funding sources that are at risk of being lost if the project is delayed?)
- Assurances of how the enhanced stream flow will be protected against diversion by other water users (if necessary) in the defined reach during the defined period of use
- Co-benefits (will the project provide multiple realistic and significant benefits that can be quantified and measured, and will deliver sustainable outcomes in the long-term?)
- Project match (is there a commitment of significant local, federal, private or other State funds?)
- Scientific basis (is project is based on best available science?)
- Monitoring (is there a plan and commitment and funding to assess and assure long-term (at least 20 years) project success?)
- How is the project location and anticipated outcome consistent with WCB's 2014 Strategic Plan, the California Water Action Plan, and other appropriate state and federal plans?