A scenic view of a lake with a rocky shoreline in the foreground and mountains in the background. The water is clear, revealing the smooth, dark rocks of the beach. In the distance, there are green mountains under a clear blue sky. The text is overlaid on the upper half of the image.

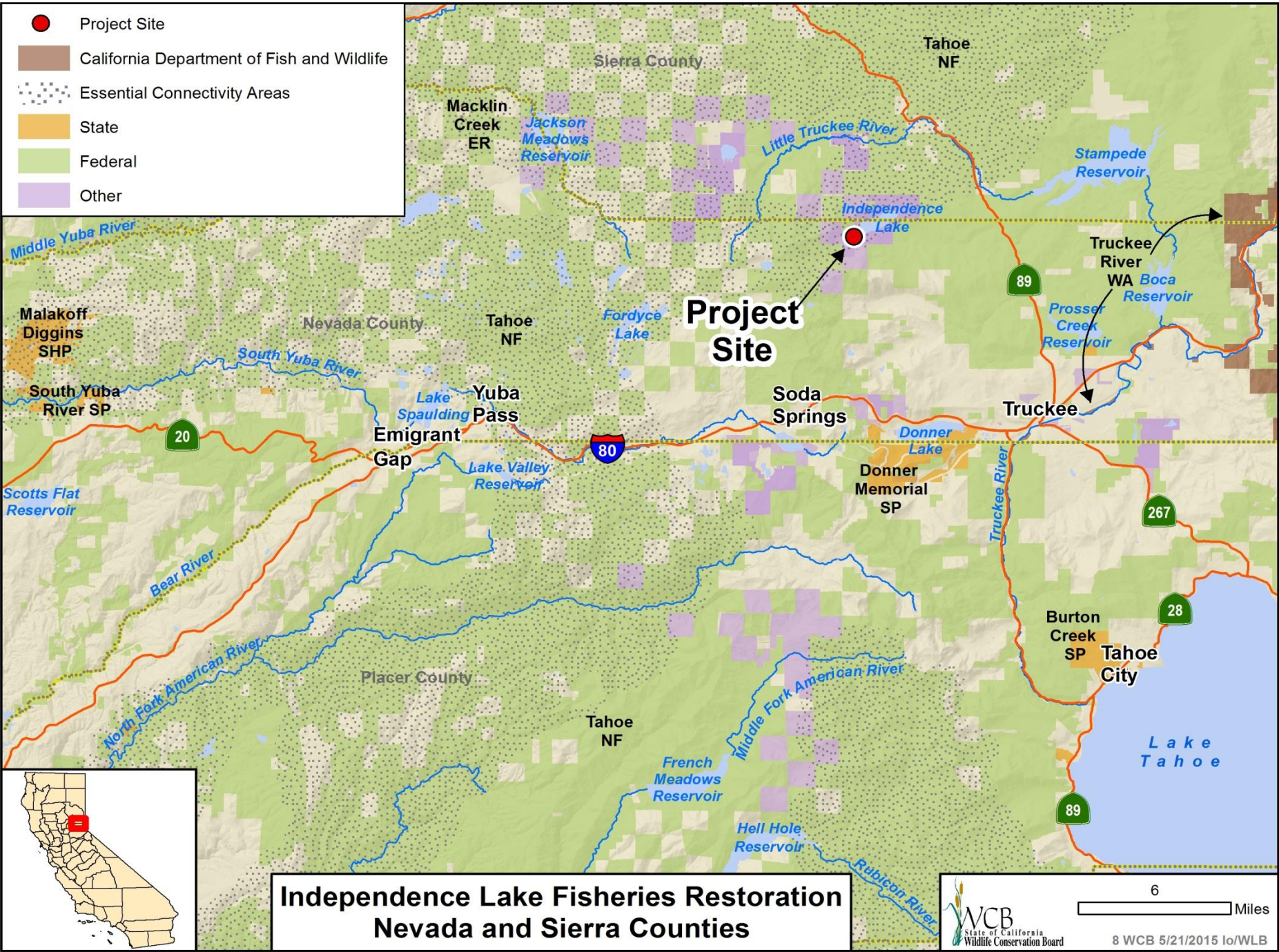
**May 21, 2015, 9:00am**  
**Wildlife Conservation Board Meeting**  
**Natural Resources Agency Auditorium**  
**1416 9<sup>th</sup> Street**  
**Sacramento, California 95814**

## #7. Smithneck Creek Wildlife Area Land Exchange

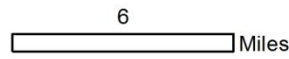
---

- This Project was withdrawn from consideration at this time.

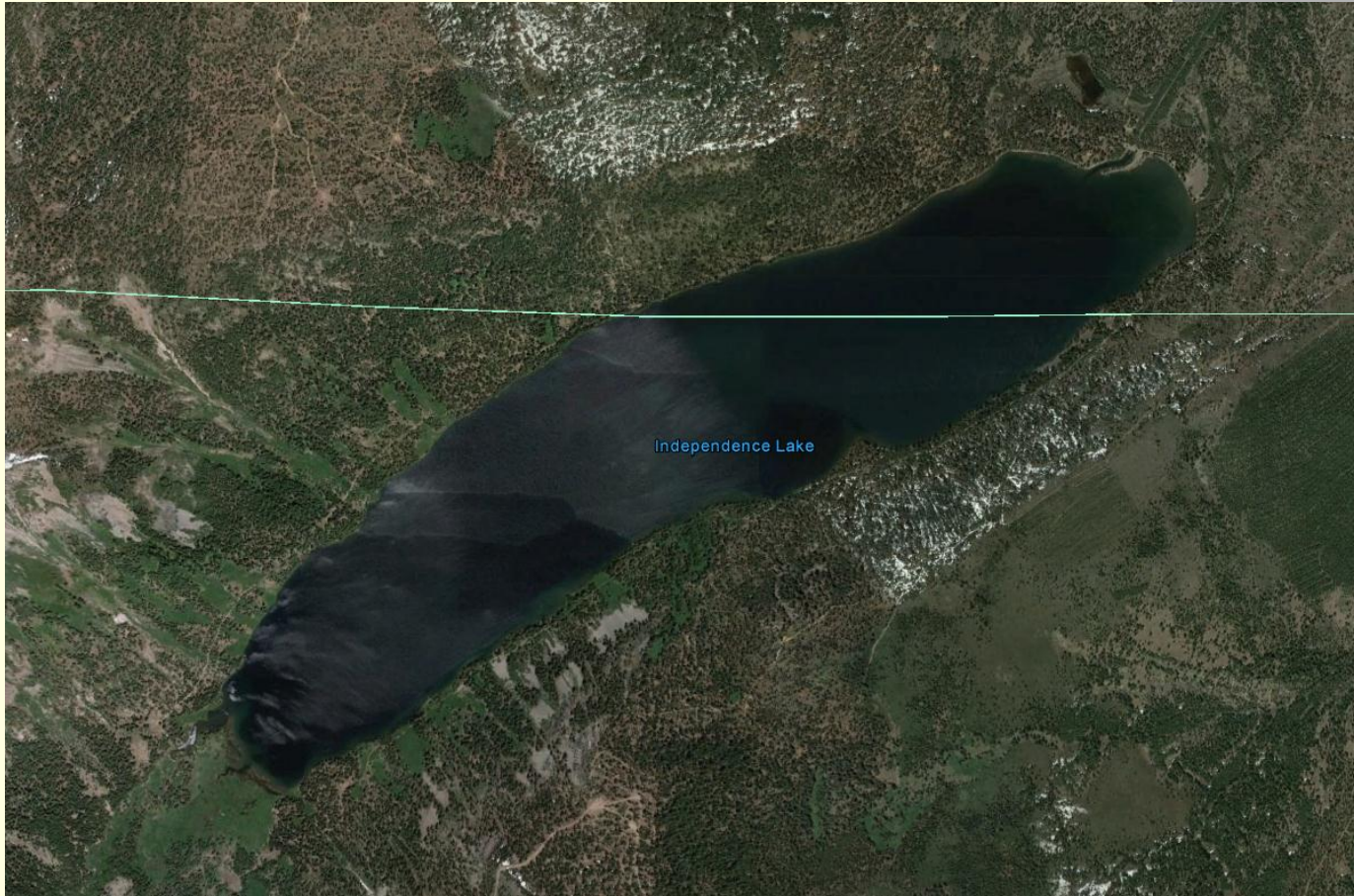
- Project Site
- California Department of Fish and Wildlife
- Essential Connectivity Areas
- State
- Federal
- Other



**Independence Lake Fisheries Restoration**  
**Nevada and Sierra Counties**



## #8. Independence Lake Fisheries Restoration



- Overview of Independence Lake

## #8. Independence Lake Fisheries Restoration

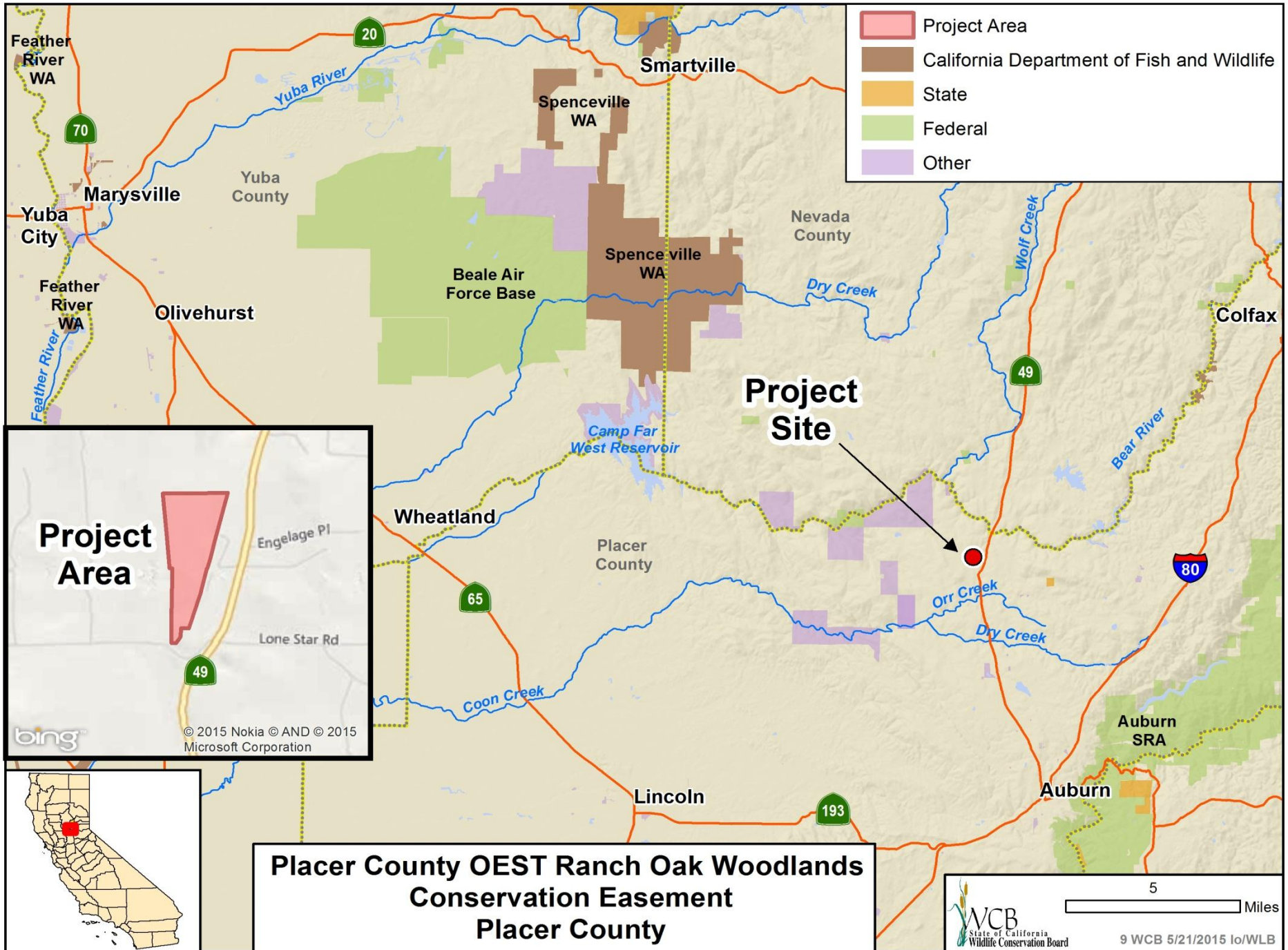


- Upper Independence Creek weir utilized to capture Brook Trout and count Lahonton Cutthroat Trout

## #8. Independence Lake Fisheries Restoration



- During active monitoring this box will have a pipe connected to the weir trapping fish.



- Project Area
- California Department of Fish and Wildlife
- State
- Federal
- Other

**Project Area**

© 2015 Nokia © AND © 2015 Microsoft Corporation

**Placer County OEST Ranch Oak Woodlands Conservation Easement Placer County**

## #9. Placer County OEST Ranch Oak Woodlands Conservation Easement



- The property is described as being part of lower elevation foothill terrain with a ridgetop area that extends along most of the eastern portion of the site



## #9. Placer County OEST Ranch Oak Woodlands Conservation Easement

---



- The Oest Ranch Conservation Easement conserves approximately 20 acres of oak woodlands (55% of the Easement area)

## #9. Placer County OEST Ranch Oak Woodlands Conservation Easement

---



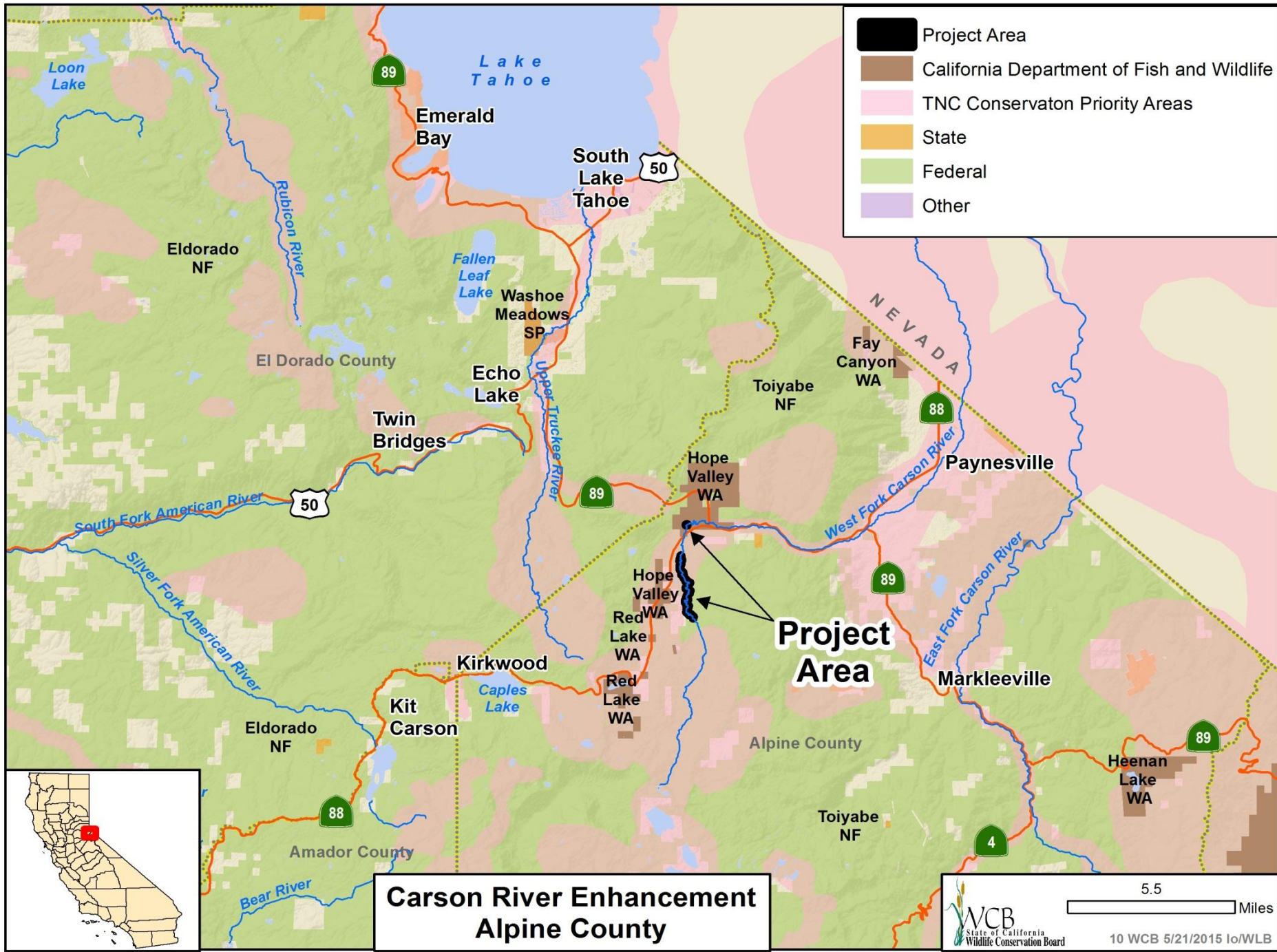
- The Oest Ranch Conservation Easement conserves approximately 20 acres of oak woodlands (55% of the Easement area)

## #9. Placer County OEST Ranch Oak Woodlands Conservation Easement

---



- Property owner Daryl Oest



- Project Area
- California Department of Fish and Wildlife
- TNC Conservation Priority Areas
- State
- Federal
- Other

**Carson River Enhancement  
Alpine County**



State of California  
Wildlife Conservation Board

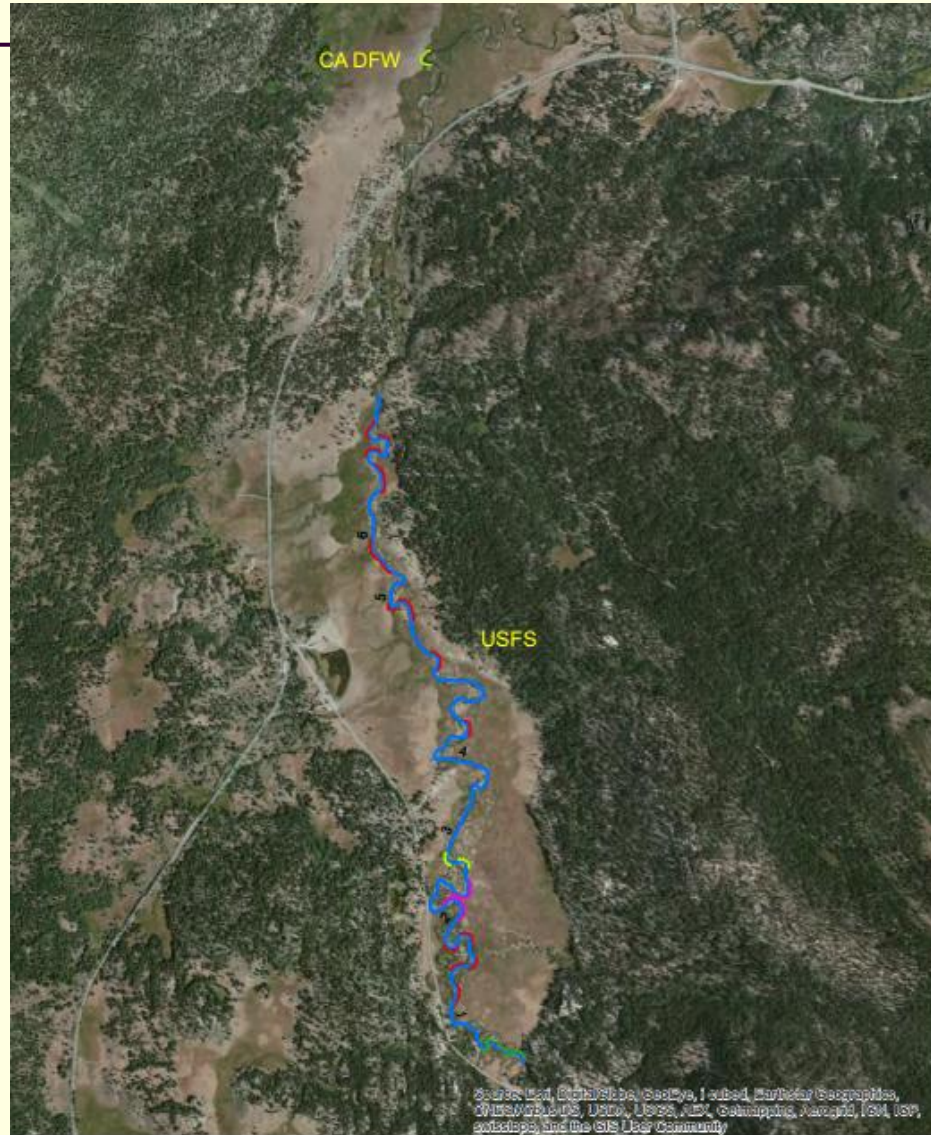
5.5

---

Miles

10 WCB 5/21/2015 lo/WLB

## #10. Carson River Enhancement



- Aerial view of area at high risk of erosion

## #10. Carson River Enhancement



- Overview of Hope Valley

## #10. Carson River Enhancement

---



- Bank with high erosion

## #10. Carson River Enhancement



- A large event could cut through the banks leaving a large area of the meadow dry



## #10. Carson River Enhancement



- Beaver Dam

## #10. Carson River Enhancement



- High erosion bank that would benefit from bank stabilization

## #10. Carson River Enhancement

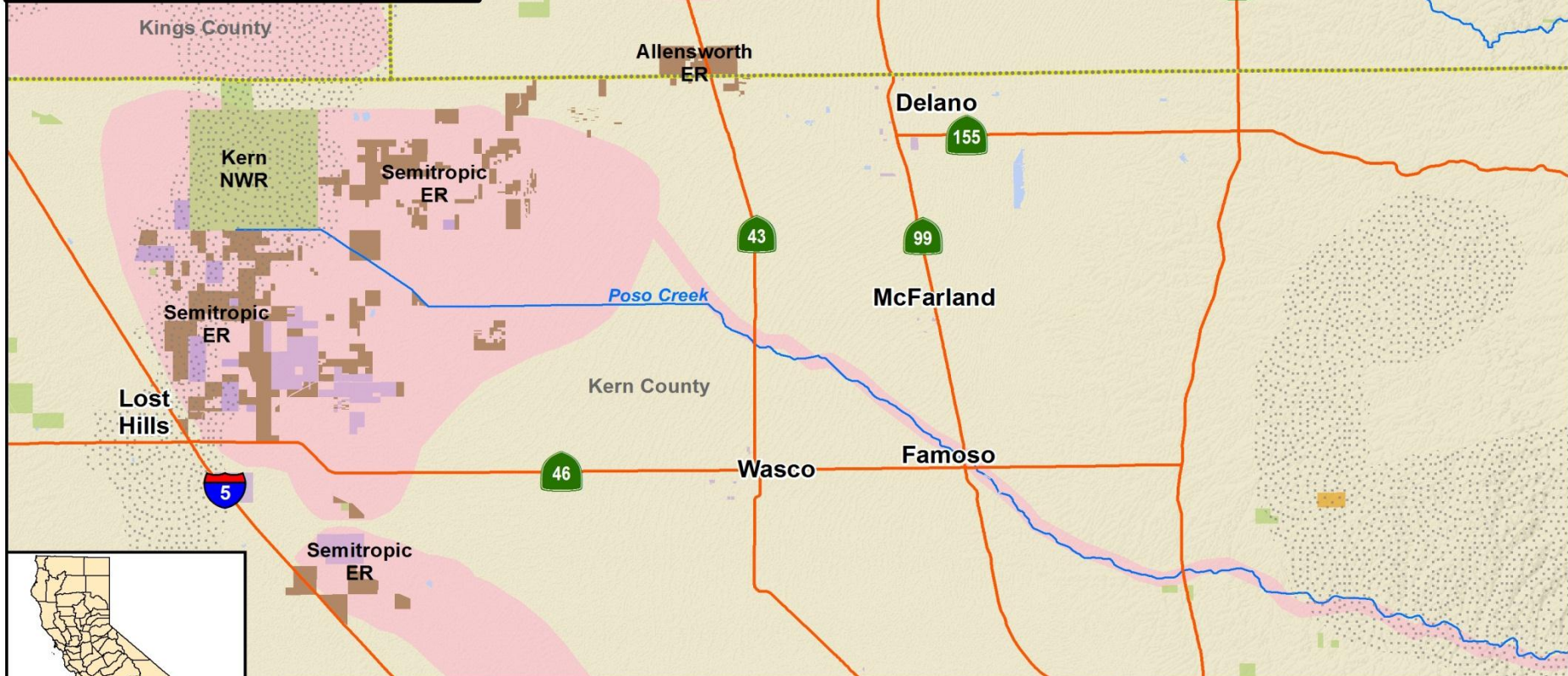
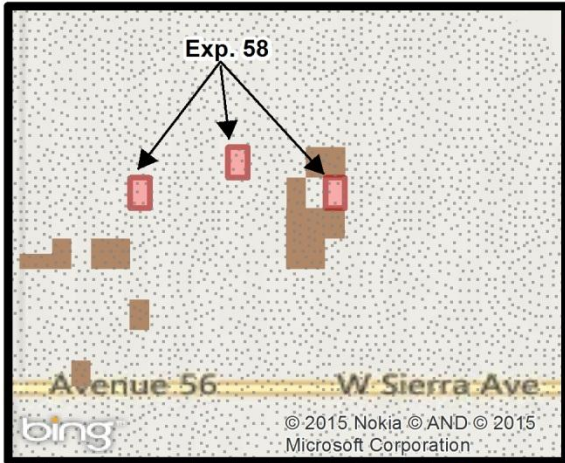


- Former bank stabilization project on CDFW land with established willows

## #11. Maxwell Conservation Easement Transfer

---

- This Project was withdrawn from consideration at this time.



**Allensworth Ecological Reserve, Expansions 58  
Tulare County**

## #12. Allensworth Ecological Reserve, Expansion 58

---



- San Joaquin kit fox

## #12. Allensworth Ecological Reserve, Expansion 58



- Tipton Kangaroo Rat

## #12. Allensworth Ecological Reserve, Expansion 58



- Blunt-Nosed Leopard Lizard



## #12. Allensworth Ecological Reserve, Expansion 58

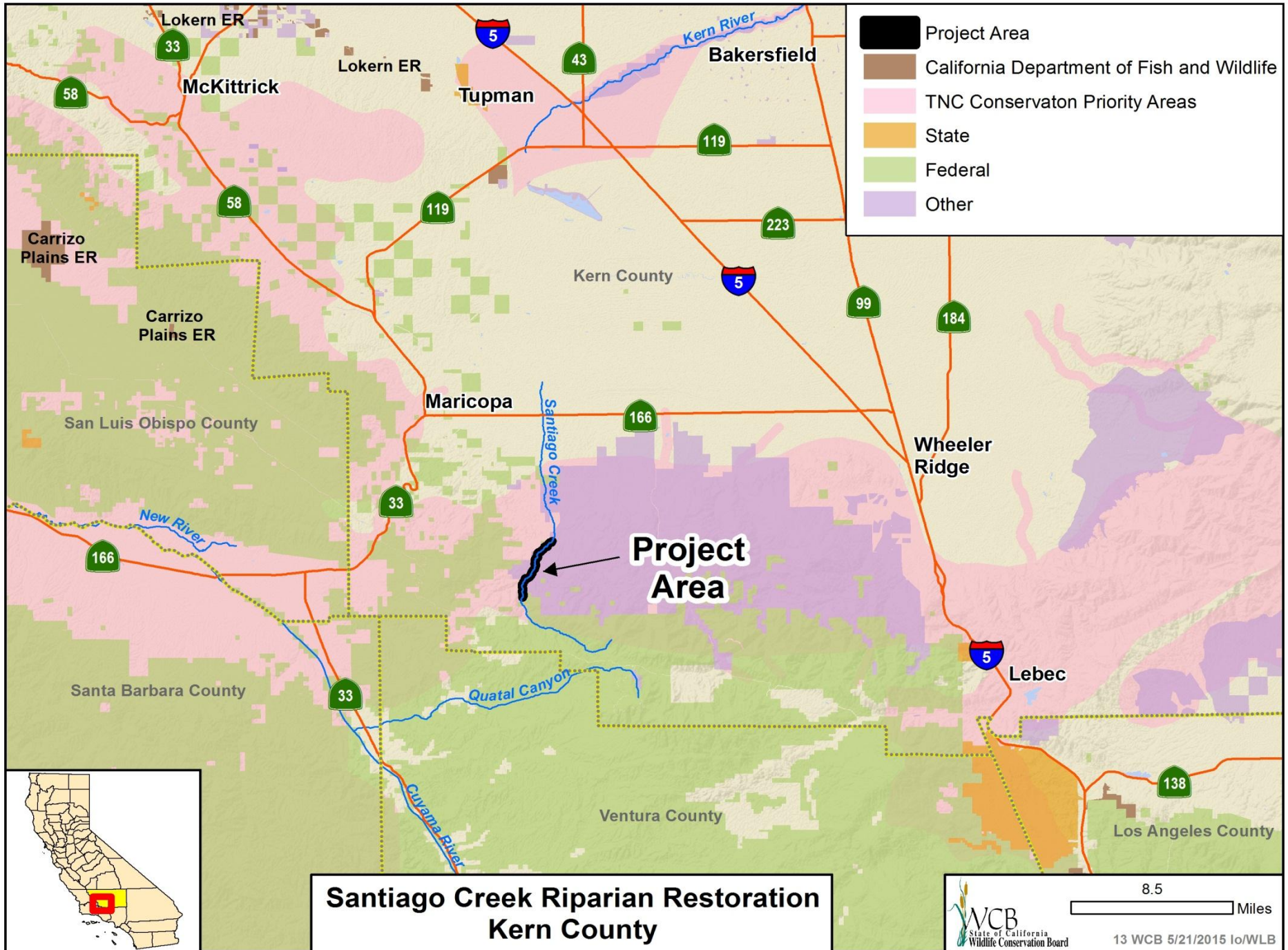


- View looking south

## #12. Allensworth Ecological Reserve, Expansion 58



- View looking west



**Santiago Creek Riparian Restoration  
Kern County**




8.5 Miles  
 13 WCB 5/21/2015 Io/WLB

## #13. Santiago Creek Riparian Restoration



- Santiago Creek

## #13. Santiago Creek Riparian Restoration

---



- Distant view of dense infestation of Tamarisk along Santiago Creek

## #13. Santiago Creek Riparian Restoration



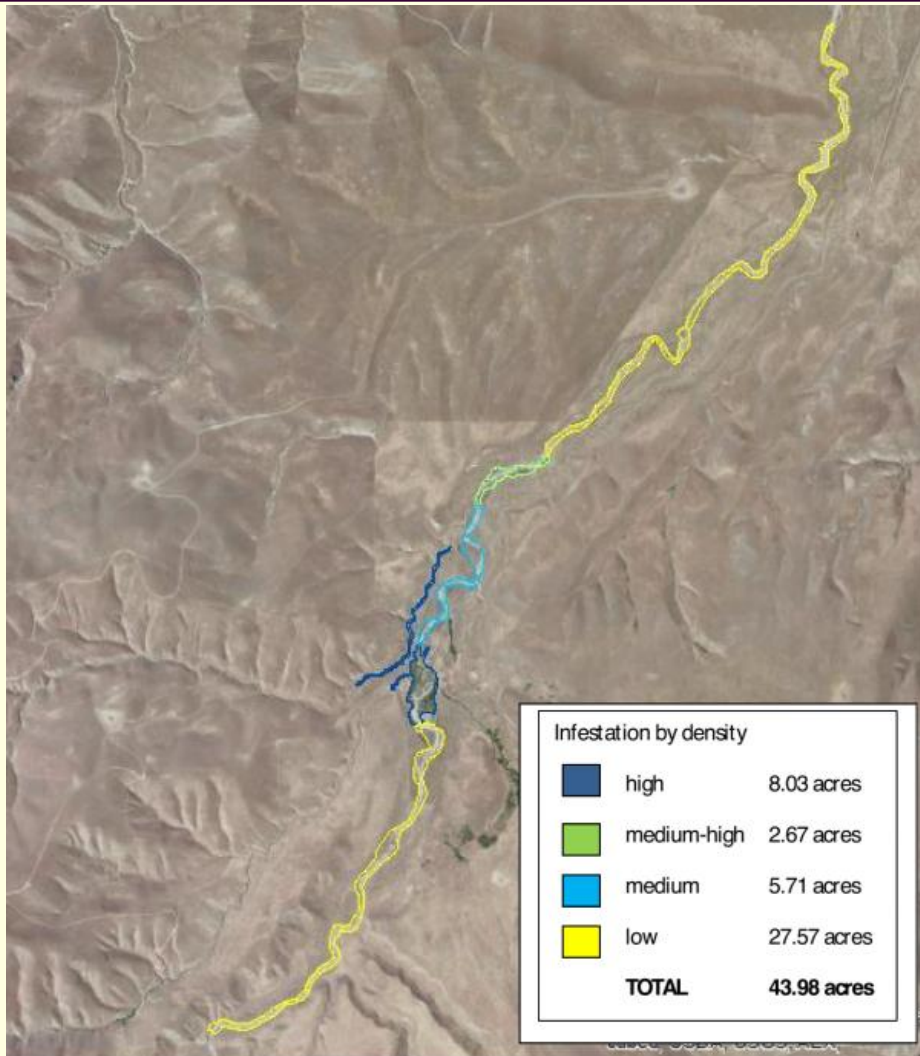
- Dense stands of newly established tamarisk saplings cover recently disturbed areas of loose sandy soil in the Santiago Creek wash. Mature tamarisks are shown growing along the perimeter

## #13. Santiago Creek Riparian Restoration



- Three years ago, a tamarisk removal project was carried out in a section of Santiago Creek. Out of the over 1,000 stumps shown here, fewer than 40 re-spouted.

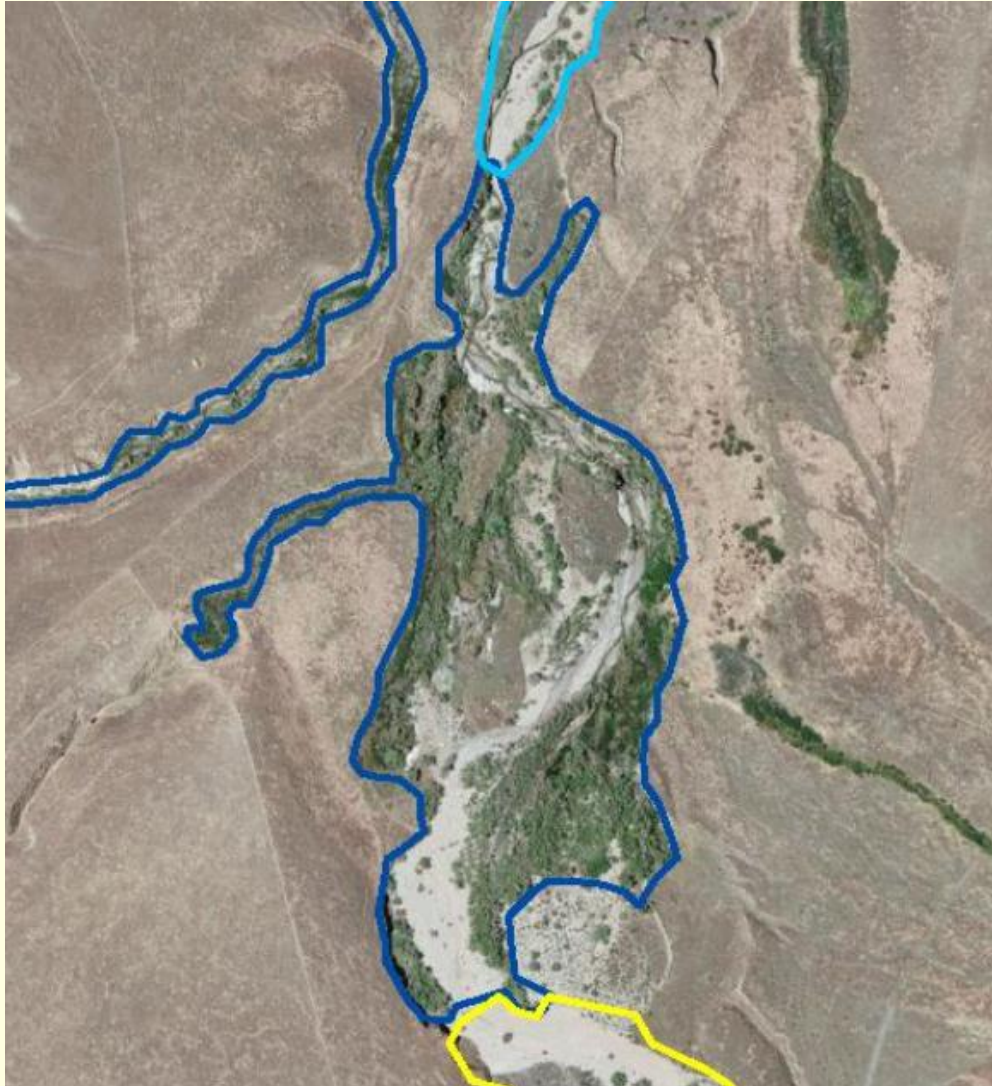
## #13. Santiago Creek Riparian Restoration



- This is an aerial view of entire project area on Wind Wolves preserve currently infested with tamarisk




## #13. Santiago Creek Riparian Restoration



- This is an aerial image of the high density tamarisk infestation on the Santiago Creek wash



**Coal Oil Point Reserve Improvements  
Santa Barbara County**


8 Miles  
 State of California  
 Wildlife Conservation Board  
 14 WCB 5/21/2015 lo/WLB

## #14. Coal Oil Point Reserve Improvements



- Future Coal Oil Point Reserve headquarters

## #14. Coal Oil Point Reserve Improvements

---



- Kitchen area to be remodeled

## #14. Coal Oil Point Reserve Improvements



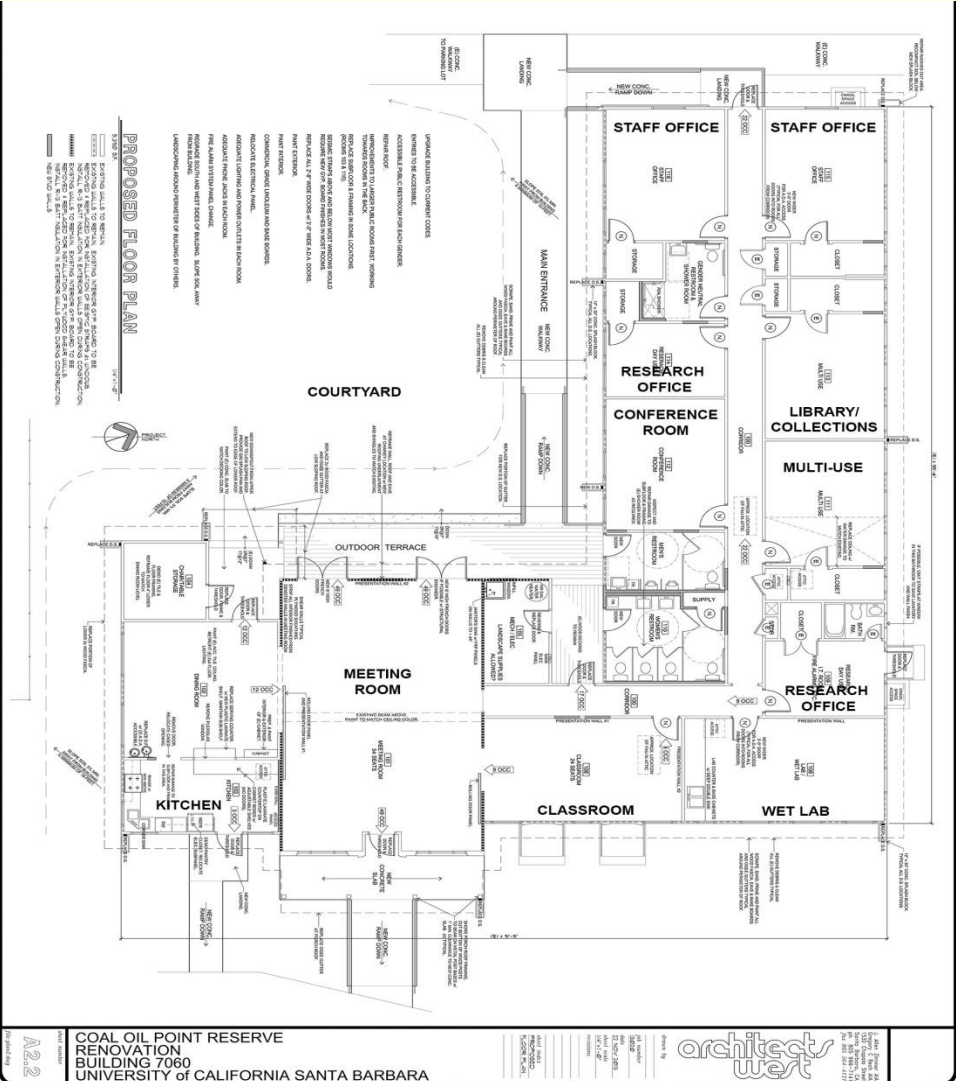
- Future classroom

## #14. Coal Oil Point Reserve Improvements



- Bathroom and showers to be remodeled

# #14. Coal Oil Point Reserve Improvements



Intended Floor Plan of future headquarters

## #14. Coal Oil Point Reserve Improvements



- New crossing for Devereux Creek, which replaced the old culvert that funneled the creek into the Devereux Slough completed during Phase 1



## #14. Coal Oil Point Reserve Improvements

---



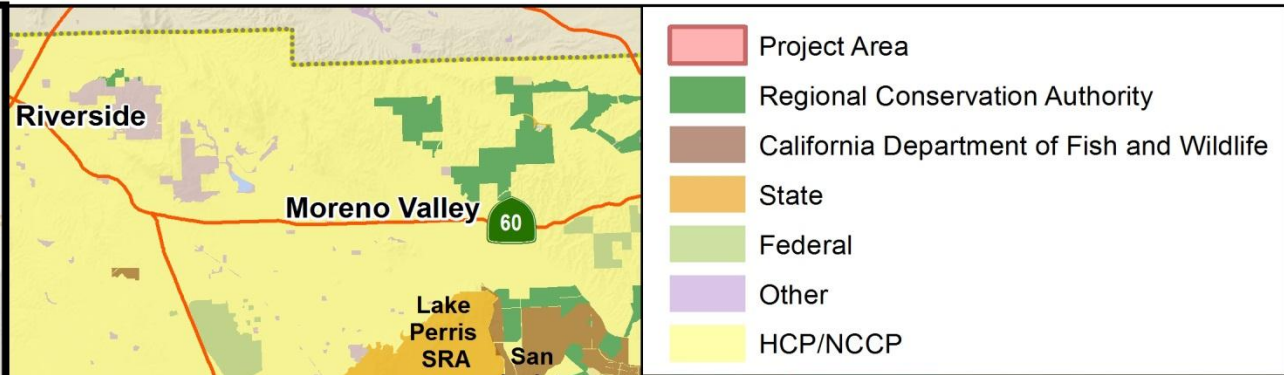
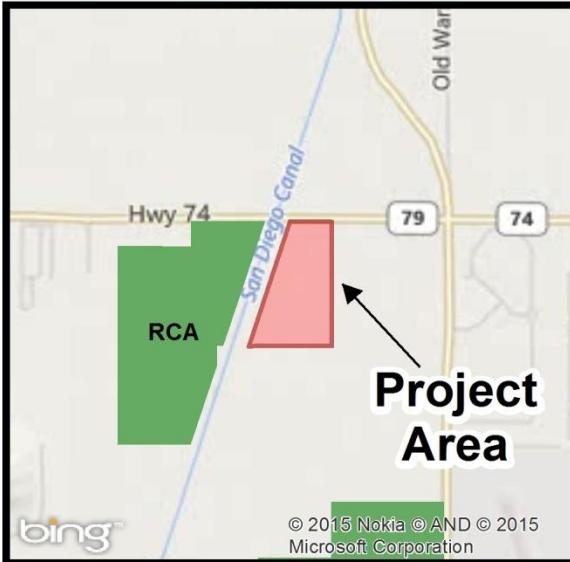
- Old Shed (left) demolished and replaced with storage shed (right)

## #14. Coal Oil Point Reserve Improvements

---



- Old shed (left) replaced with workshop (right) during Phase 1



**Western Riverside MSHCP (2013) - Kaelin  
Riverside County**

## #15. Western Riverside MSHCP (2013) - Kaelin



- Photo on looking subject property from Warren Road

## #15. Western Riverside MSHCP (2013) - Kaelin



## #15. Western Riverside MSHCP (2013) - Kaelin

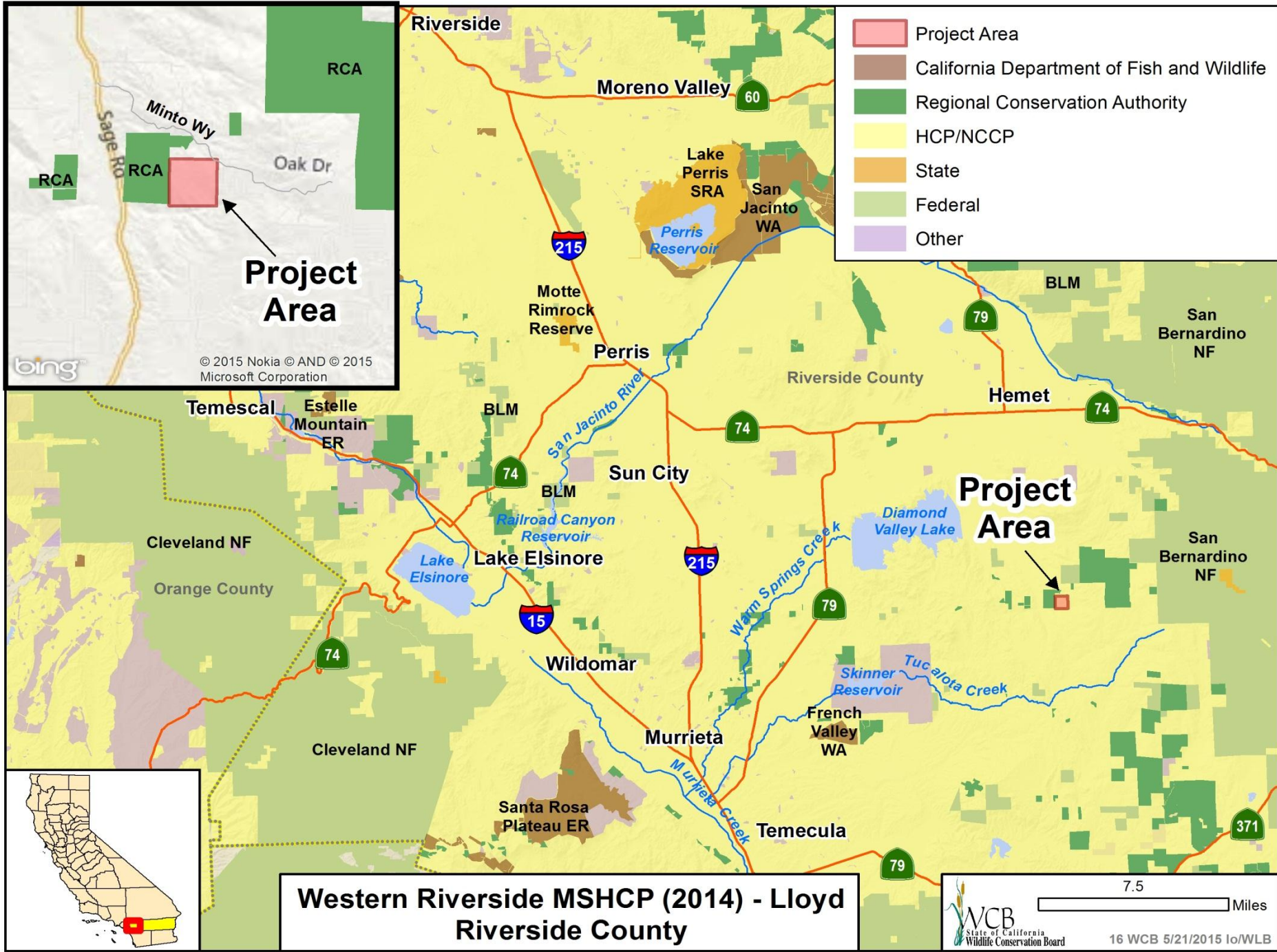


- The surrounding neighborhood is comprised of a mixture of vacant unimproved properties mixed with major commercial development that includes a large auto mall located adjacent to the Property

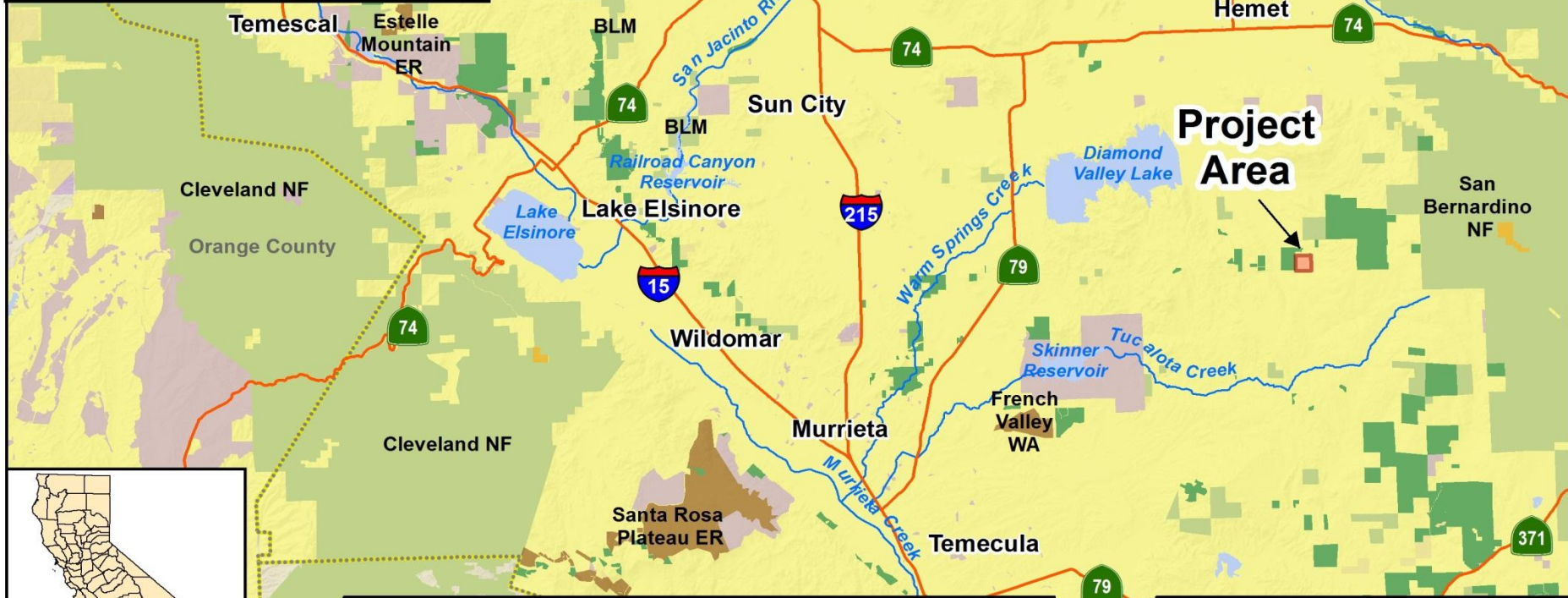
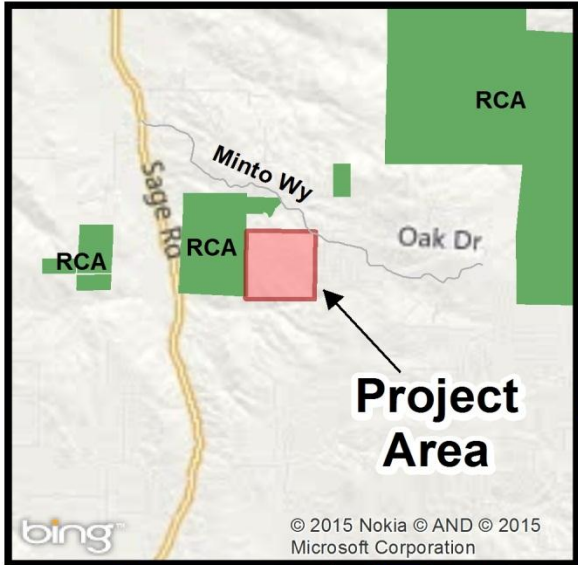
## #15. Western Riverside MSHCP (2013) - Kaelin



- View of the Kaelin property line as viewed from Warren Road



- Project Area
- California Department of Fish and Wildlife
- Regional Conservation Authority
- HCP/NCCP
- State
- Federal
- Other



**Western Riverside MSHCP (2014) - Lloyd  
Riverside County**



WCB  
State of California  
Wildlife Conservation Board

7.5 Miles



16 WCB 5/21/2015 Io/WLB



## #16. Western Riverside MSHCP (2014) - Lloyd



- The Lloyd Property is located in an area known as the Eastern Foothills, which extends from Cactus Valley & continues north across Bautista Canyon and the San Jacinto River.

## #16. Western Riverside MSHCP (2014) - Lloyd

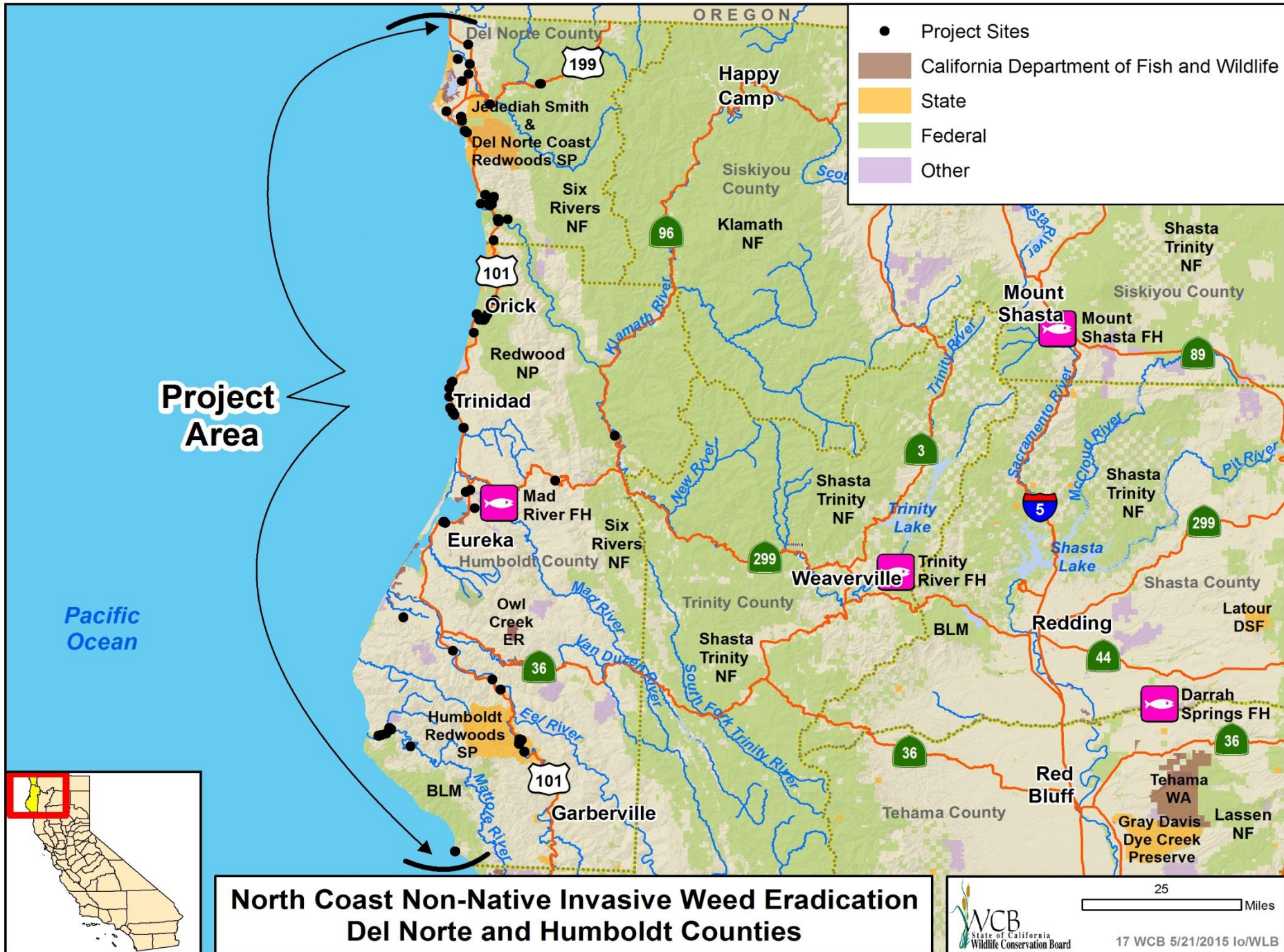


- View of the northeast corner of the property

## #16. Western Riverside MSHCP (2014) - Lloyd



- Properties such as the Lloyd Property, are being acquired for their vegetation habitat comprised of coastal sage scrub, alluvial fan scrub, riparian woodland & Grasslands that support rare plants and animals.



- Project Sites
- California Department of Fish and Wildlife
- State
- Federal
- Other

**Project Area**

**North Coast Non-Native Invasive Weed Eradication  
Del Norte and Humboldt Counties**

# #17. North Coast Non-native Invasive Weed Eradication

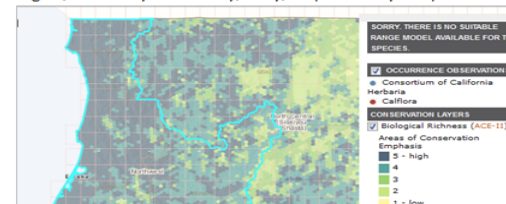
## ERADICATION WORKPLAN FOR NORTHWEST – 2013

Regional stakeholders determined that the species listed below are eradicable from the Northwest region (Humboldt and Del Norte counties) within five years. This document describes the proposed management and cost necessary for eradication of these species. Send questions to [mapping@cal-ipc.org](mailto:mapping@cal-ipc.org) or call 510-843-3902.

SPECIES	COMMON NAME	LINK TO MAP
1 <i>Fallopia japonica</i> (= <i>Polygonum cuspidatum</i> )	Japanese knotweed	<a href="#">CalWeedMapper: Fallopia japonica (= Polygonum cuspidatum)</a>
2 <i>Fallopia sachalinensis</i> (= <i>Polygonum sachalinense</i> )	Sakhalin knotweed	<a href="#">CalWeedMapper: Fallopia sachalinensis (= Polygonum sachalinense)</a>
3 <i>Persicaria wallichii</i> (= <i>Polygonum polystachyum</i> )	Himalayan knotweed	<a href="#">Calflora: Persicaria wallichii (= Polygonum polystachyum)</a>
4 <i>Arundo donax</i>	giant reed	<a href="#">CalWeedMapper: Arundo donax</a>
5 <i>Lythrum salicaria</i>	purple loosestrife	<a href="#">CalWeedMapper: Lythrum salicaria</a>
6 <i>Tamarix ramosissima</i>	saltcedar, tamarisk	<a href="#">CalWeedMapper: Tamarix ramosissima</a>
7 <i>Euphorbia virgata</i> (= <i>Euphorbia esula</i> )	leafy spurge	<a href="#">CalWeedMapper: Euphorbia virgata (= Euphorbia esula)</a>
8 <i>Chondrilla juncea</i>	rush skeletonweed	<a href="#">CalWeedMapper: Chondrilla juncea</a>
9? <i>Euphorbia oblongata</i>	oblong spurge	<a href="#">CalWeedMapper: Euphorbia oblongata</a>
10? <i>Geranium lucidum</i> (a new addition?)	shiny geranium	<a href="#">Calflora: Geranium lucidum</a>

**I. PRIORITY TARGETS.** Each species is described by total number of sites, treatment type, total acreage (or total number of plants if small), cost per acre to treat, total cost per year, # of years to eradicate, and # of years to monitor. The intent is to have these species generally mapped by quad in [CalWeedMapper](#) and to have each occurrence mapped in [Calflora](#) (as a point, line or polygon). If detected in new areas, the species should be mapped and targeted for eradication. Regional partners will mobilize to respond rapidly and remove it.

**II. REGIONAL AREAS OF CONSERVATION EMPHASIS:** These represent areas of high “biological richness” within the region, defined by biodiversity, rarity, irreplaceability and presence of sensitive habitats.



- Invasive species planning tools, Regional plans

## #17. North Coast Non-native Invasive Weed Eradication



- Rush skeletonweed and Giant reed

## #17. North Coast Non-native Invasive Weed Eradication



- Shiny geranium, Humboldt County

## #17. North Coast Non-native Invasive Weed Eradication



Photo courtesy of Monica Walker

- Knotweed thicket - understory



## #17. North Coast Non-native Invasive Weed Eradication



- Knotweed near Patrick's Point State Park; before and during treatment

## #17. North Coast Non-native Invasive Weed Eradication



Washington State sites:

- 2004 before treatment, showing knotweed infestation
- 2006 after treatment, showing willow on sandbar

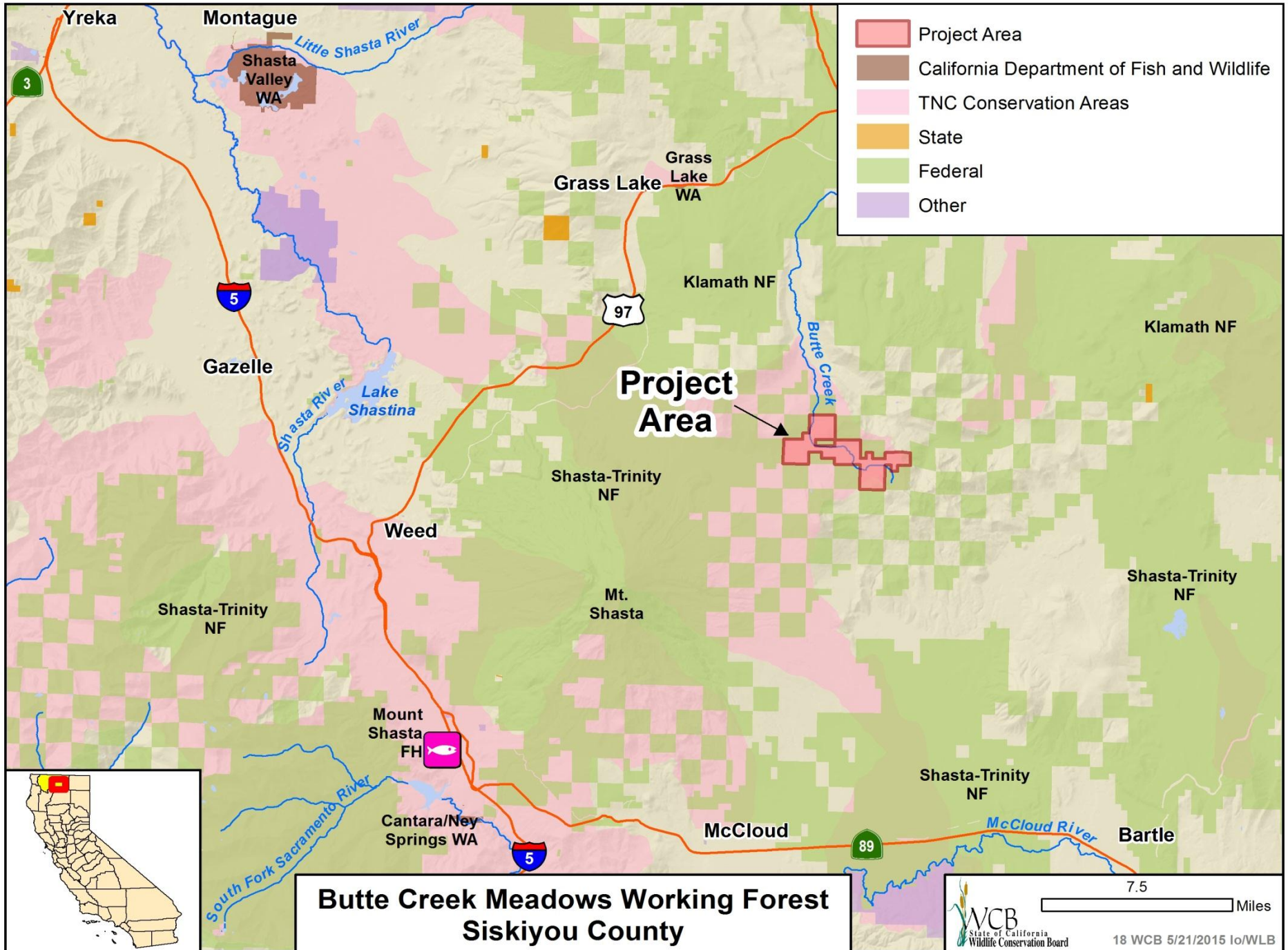
# #17. North Coast Non-native Invasive Weed Eradication



- Knotweed: before and after herbicide treatment



Photos courtesy of Domenic Bongio and Craig Benson



- Project Area
- California Department of Fish and Wildlife
- TNC Conservation Areas
- State
- Federal
- Other

**Project Area**

**Butte Creek Meadows Working Forest  
Siskiyou County**

## #18. Butte Creek Meadows Working Forest

Photo courtesy of Pacific Forest Trust



- A working forest conservation easement will prevent break up or development of the ranch.

## #18. Butte Creek Meadows Working Forest



Photo courtesy of Pacific Forest Trust

- The property is being managed to reduce fire risk and restore the extent of the meadows from encroaching lodge pole pine.

## #18. Butte Creek Meadows Working Forest



Photo courtesy of Pacific Forest Trust

- Property is located near the northeastern slope of Mt. Shasta.

## #18. Butte Creek Meadows Working Forest



Photo courtesy of Pacific Forest Trust



## #18. Butte Creek Meadows Working Forest



Photo courtesy of Pacific Forest Trust

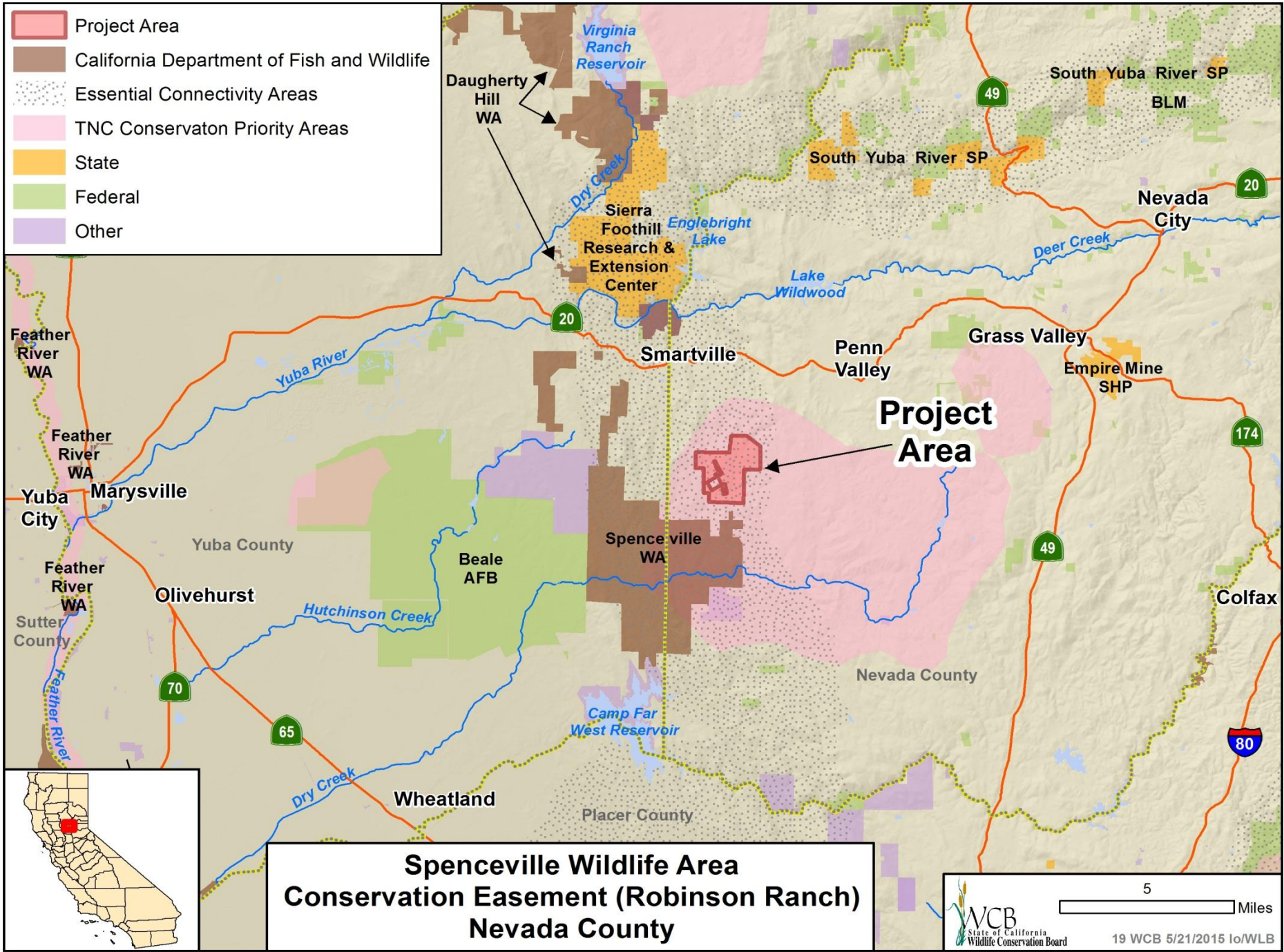
- Butte Creek Ranch provides water flows important for drinking and agriculture, as well as for endangered salmon.

## #18. Butte Creek Meadows Working Forest



- With a mosaic of vegetation types, rare habitat elements, and water resources, wildlife is abundant on Butte Creek Ranch.

- Project Area
- California Department of Fish and Wildlife
- Essential Connectivity Areas
- TNC Conservaton Priority Areas
- State
- Federal
- Other



**Spenceville Wildlife Area  
Conservation Easement (Robinson Ranch)  
Nevada County**

WCB  
State of California  
Wildlife Conservation Board

5 Miles

19 WCB 5/21/2015 Io/WLB

## #19. Spenceville Wildlife Area, Conservation Easement (Robinson Ranch)



- View of rolling topography of Robinson Ranch Property containing extensive oak woodlands

## #19. Spenceville Wildlife Area, Conservation Easement (Robinson Ranch)



- View of water feature on Robinson Ranch site

## #19. Spenceville Wildlife Area, Conservation Easement (Robinson Ranch)



- The Robinson Clan (photo courtesy of the Robinson Family)

## #19. Spenceville Wildlife Area, Conservation Easement (Robinson Ranch)



- Lowell Robinson (Photo courtesy of the Robinson Family)
- Property owner Neil Robinson pictured with Tina Bartlett, CDFW Regional Manager, North Central Region and Rachael Dinno-Taylor from The Trust for Public Land.

## #19. Spenceville Wildlife Area, Conservation Easement (Robinson Ranch)

---



- Photo of Susan Hoek (Photo from the Penn Valley Area of Champer)



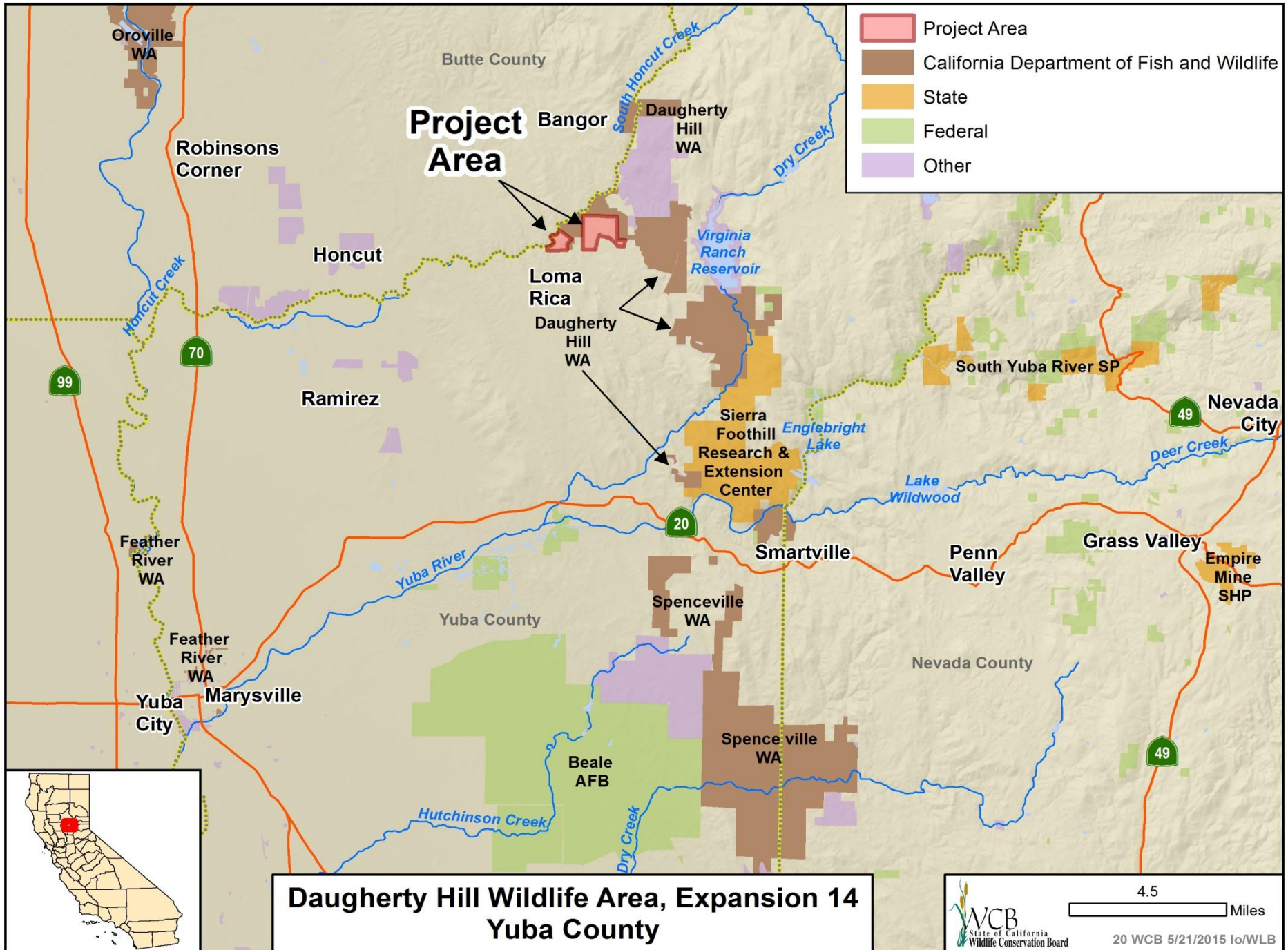
## #19. Spenceville Wildlife Area, Conservation Easement (Robinson Ranch)

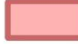






- Rough & Ready Cattle Drive with the Robinson Family in the lead. The cattle drive was from Grass Valley to Downieville. Olive Robinson (mother of Niel & Lowell Robinson) pictured here. (Photo from 1975 National Geographic Article)

# #19. Spenceville Wildlife Area, Conservation Easement (Robinson Ranch)





	Project Area
	California Department of Fish and Wildlife
	State
	Federal
	Other

**Daugherty Hill Wildlife Area, Expansion 14  
Yuba County**


4.5 Miles  
 State of California  
 Wildlife Conservation Board  
 20 WCB 5/21/2015 Io/WLB

## #20. Daugherty Hill Wildlife Area, Expansion 14



- Honcut Creek

## #20. Daugherty Hill Wildlife Area, Expansion 14



- A stand of oaks on the property

## #20. Daugherty Hill Wildlife Area, Expansion 14

---



- Rocky outcropping

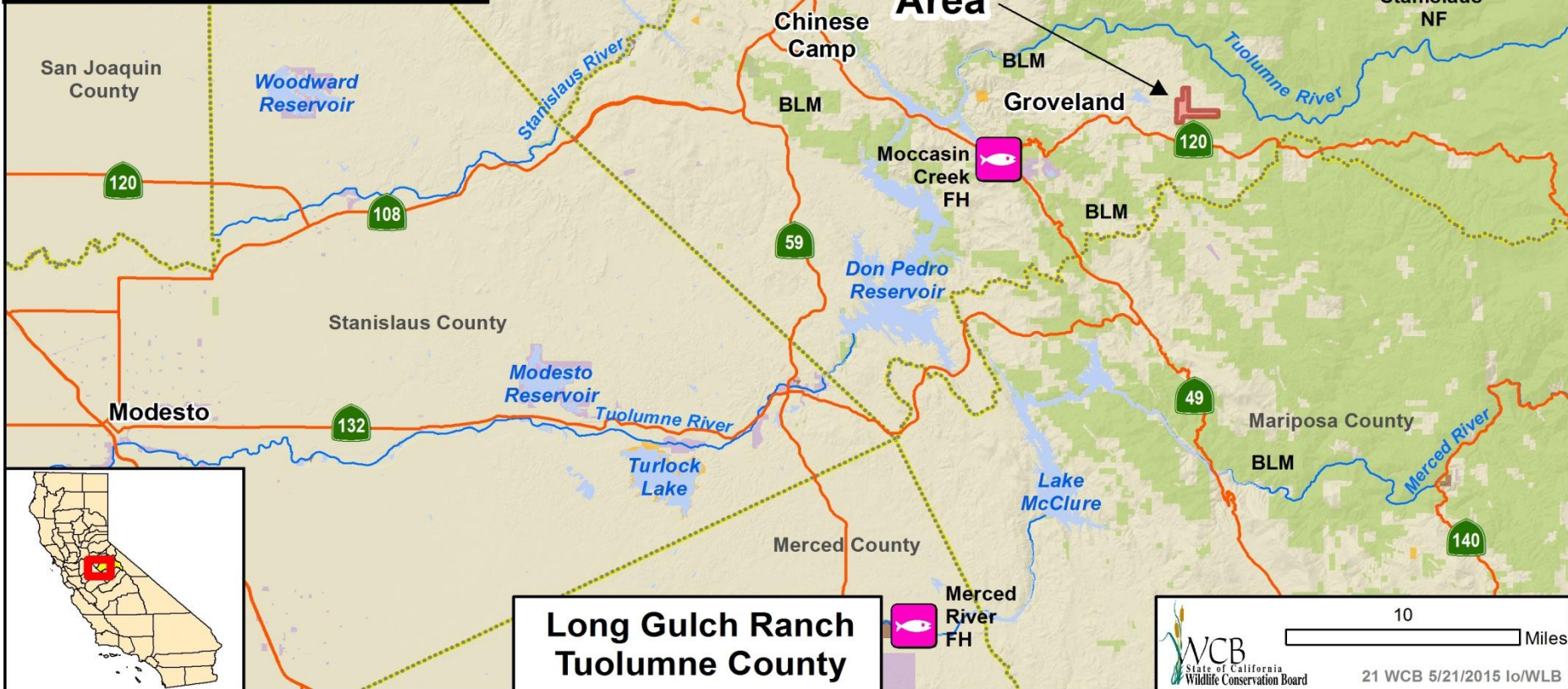
## #20. Daugherty Hill Wildlife Area, Expansion 14



- Open grasslands on the property



- Project Area
- California Department of Fish and Wildlife
- State
- Federal
- Other



**Long Gulch Ranch  
Tuolumne County**



WCB  
State of California  
Wildlife Conservation Board

10 Miles

21 WCB 5/21/2015 Io/WLB



## #21. Long Gulch Ranch



- Open grassland with forested background

## #21. Long Gulch Ranch



- Seasonal Long Gulch Creek

## #21. Long Gulch Ranch



- Great gray owl has been observed roosting in this large oak tree.

## #21. Long Gulch Ranch



- Yosemite mule deer buck and does in the background

## #21. Long Gulch Ranch

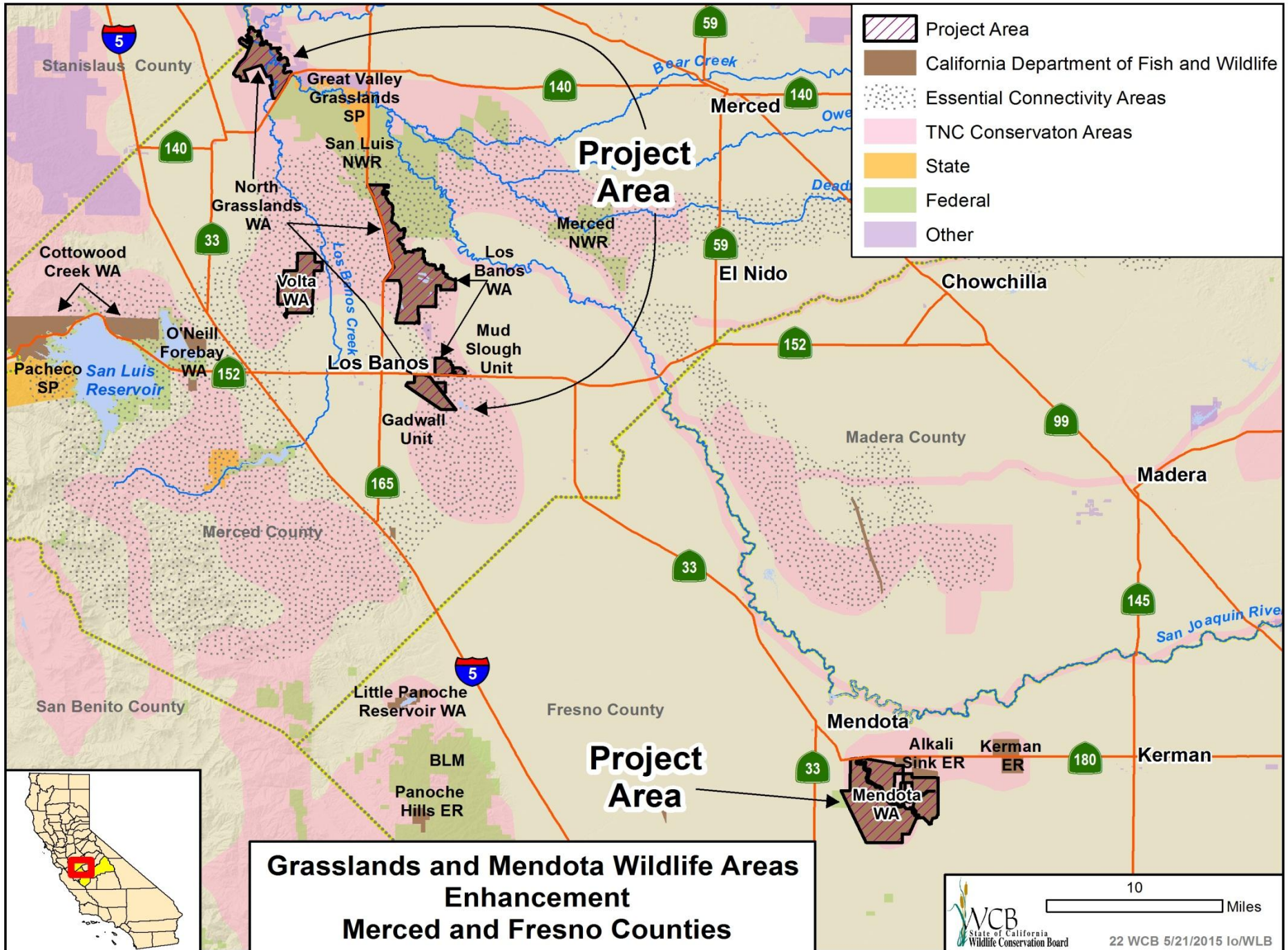


- Deer in the open grasslands.

## #21. Long Gulch Ranch

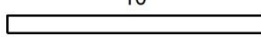



- Equestrian and hiking trail



-  Project Area
-  California Department of Fish and Wildlife
-  Essential Connectivity Areas
-  TNC Conservaton Areas
-  State
-  Federal
-  Other

**Grasslands and Mendota Wildlife Areas Enhancement  
Merced and Fresno Counties**

 10 Miles  
  
 22 WCB 5/21/2015 lo/WLB

## #22. Grasslands and Mendota Wildlife Area Enhancement



- Mud Sough nebulous property boundary. Proposed project will complete 15,000 feet of legal survey to accurately identify CDFW property boundary



## #22. Grasslands and Mendota Wildlife Area Enhancement

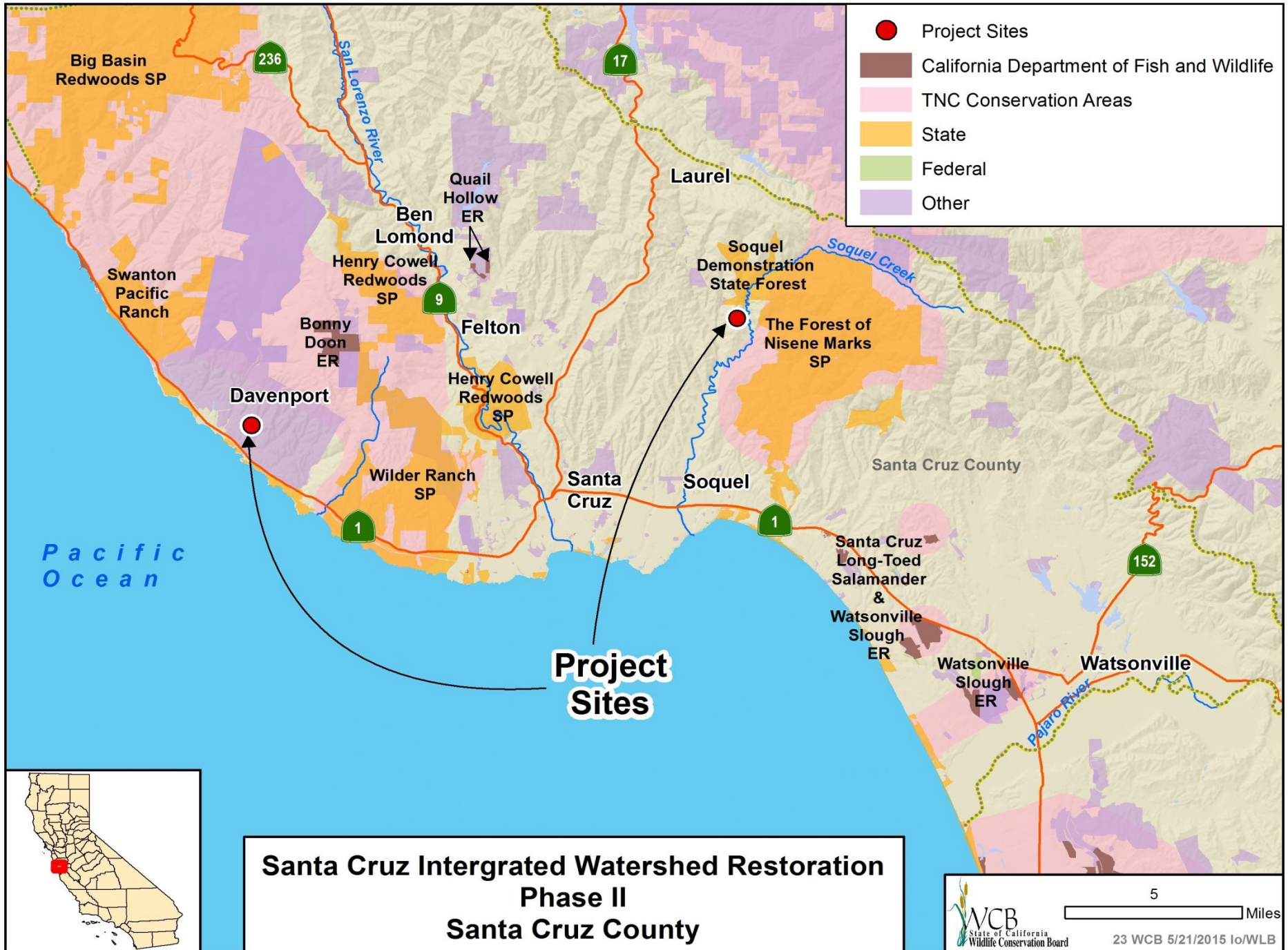


- Proposed project will construct a 1,200 foot levee to assist managers to eliminate pepperweed.

## #22. Grasslands and Mendota Wildlife Area Enhancement



- Abandoned well to be capped



- Project Sites
- California Department of Fish and Wildlife
- TNC Conservation Areas
- State
- Federal
- Other

**Project Sites**



**Santa Cruz Intergrated Watershed Restoration  
Phase II  
Santa Cruz County**

## #23. Santa Cruz Integrated Watershed Restoration, Phase II



- San Vicente Creek Upper Pond plugged with sediment

## #23. Santa Cruz Integrated Watershed Restoration, Phase II



- Rip Rap will be removed and returned to a natural floodplain habitat along Soquel Creek

## #23. Santa Cruz Integrated Watershed Restoration, Phase II

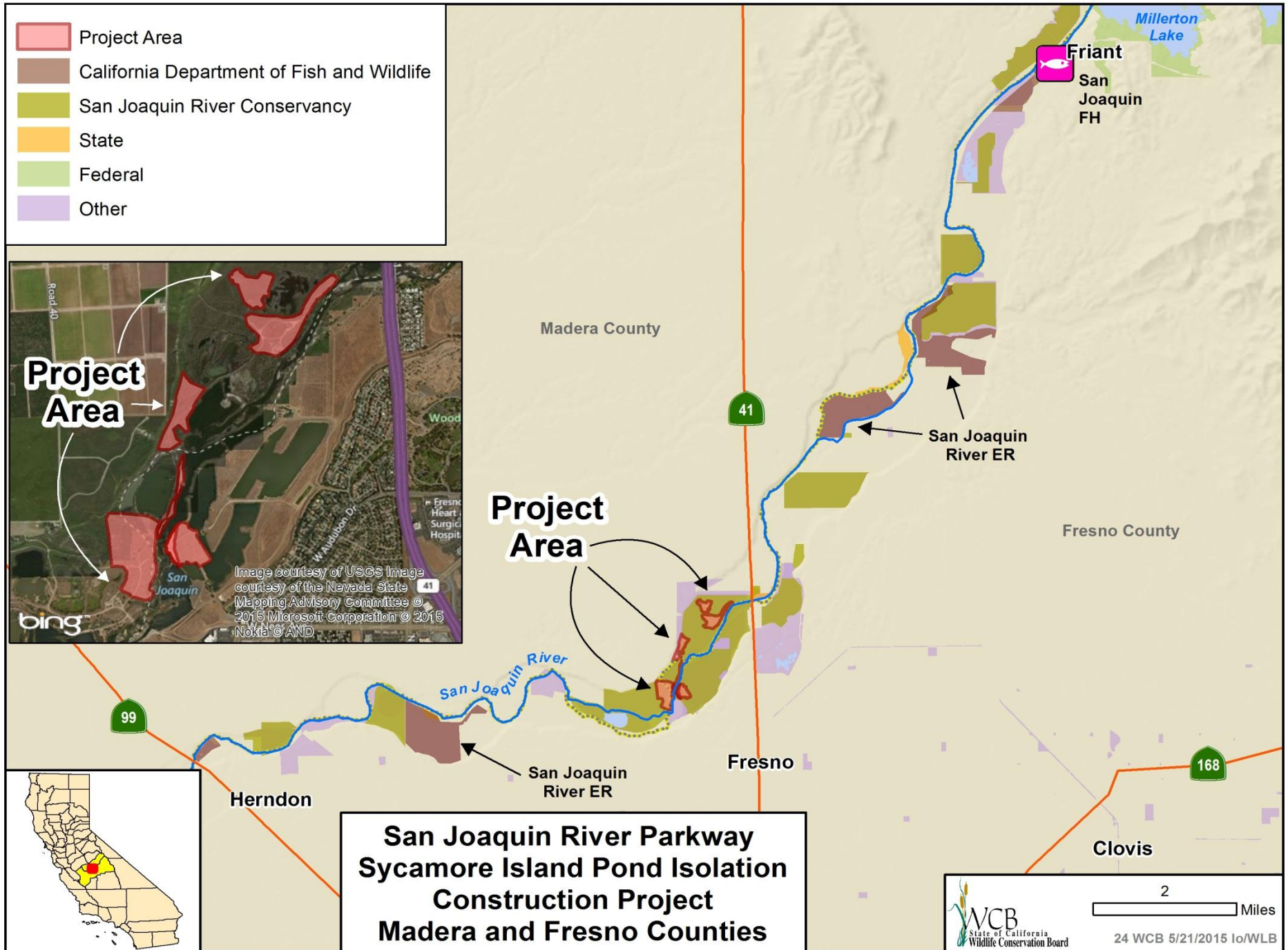


- The toe will be reconstructed with vegetated rock slope protection

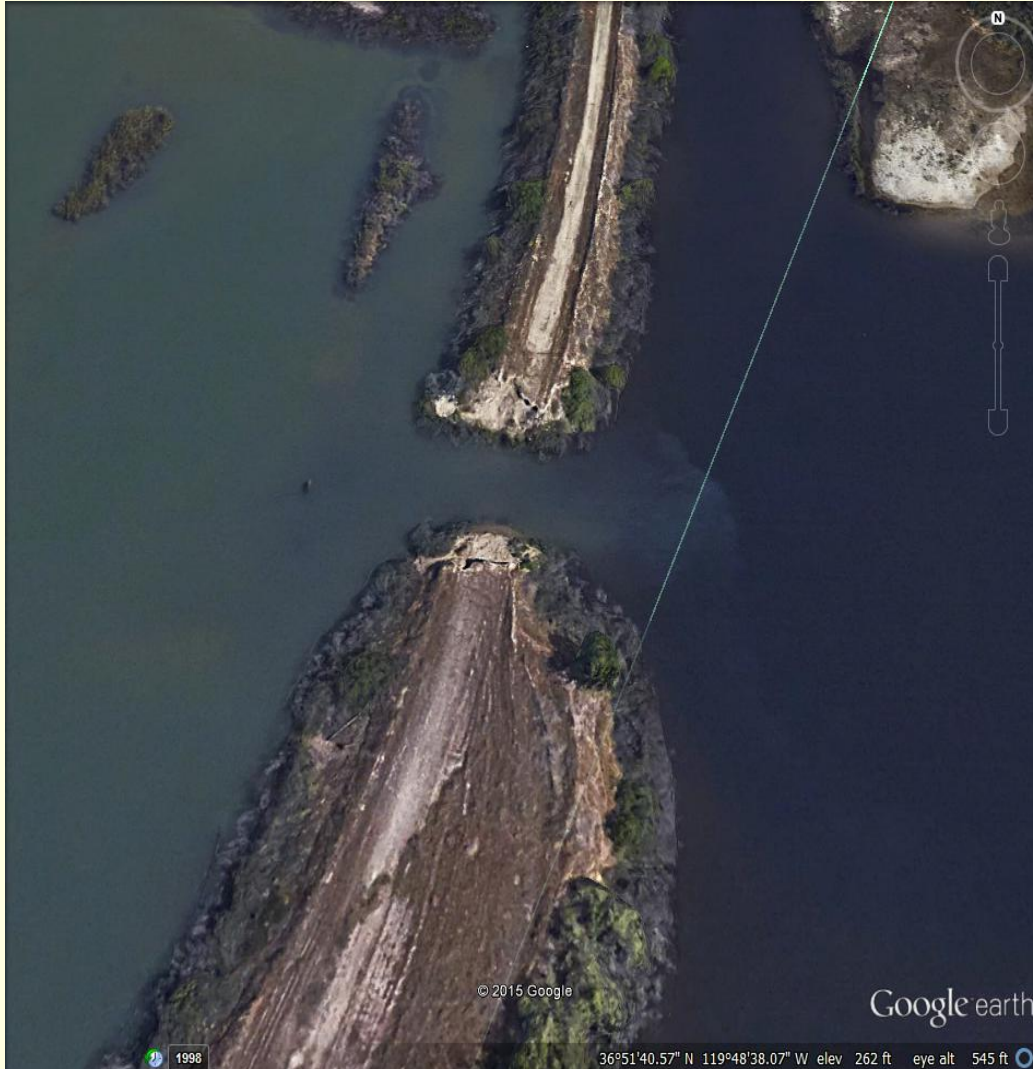
- Project Area
- California Department of Fish and Wildlife
- San Joaquin River Conservancy
- State
- Federal
- Other



**San Joaquin River Parkway  
Sycamore Island Pond Isolation  
Construction Project  
Madera and Fresno Counties**



## #24. San Joaquin River Parkway Sycamore Island Pond Isolation Construction Project



- Aerial view of the berm breach with the gravel pit on the left and the river on the right



## #24. San Joaquin River Parkway Sycamore Island Pond Isolation Construction Project



- Berm breach between Gravel Pit 46e and the San Joaquin River

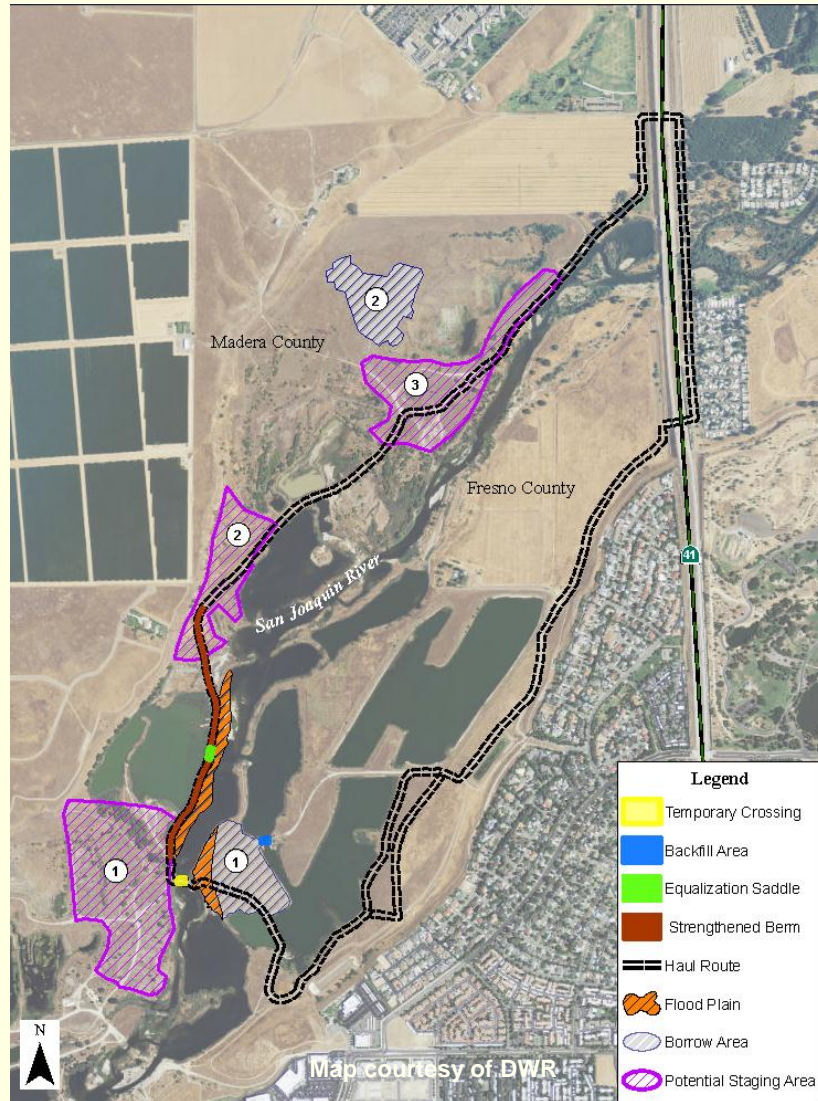
## #24. San Joaquin River Parkway Sycamore Island Pond Isolation Construction Project



Photo courtesy of K. Naventhan, DWR

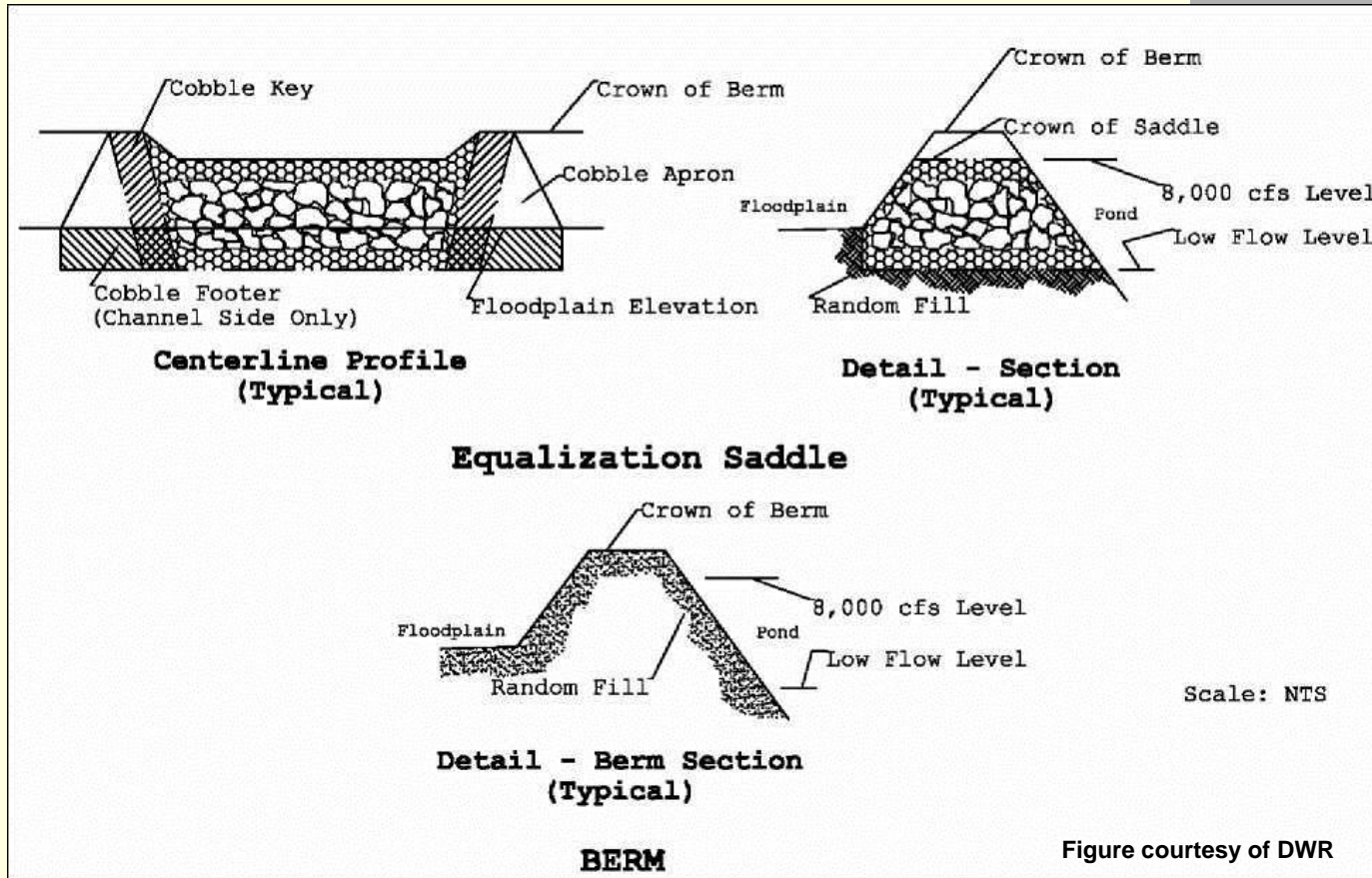
- Sparsely vegetated berm that will be improved

# #24. San Joaquin River Parkway Sycamore Island Pond Isolation Construction Project



- Project site and components

# #24. San Joaquin River Parkway Sycamore Island Pond Isolation Construction Project



- Conceptual design: Equalization saddle and berm

## #24. San Joaquin River Parkway Sycamore Island Pond Isolation Construction Project

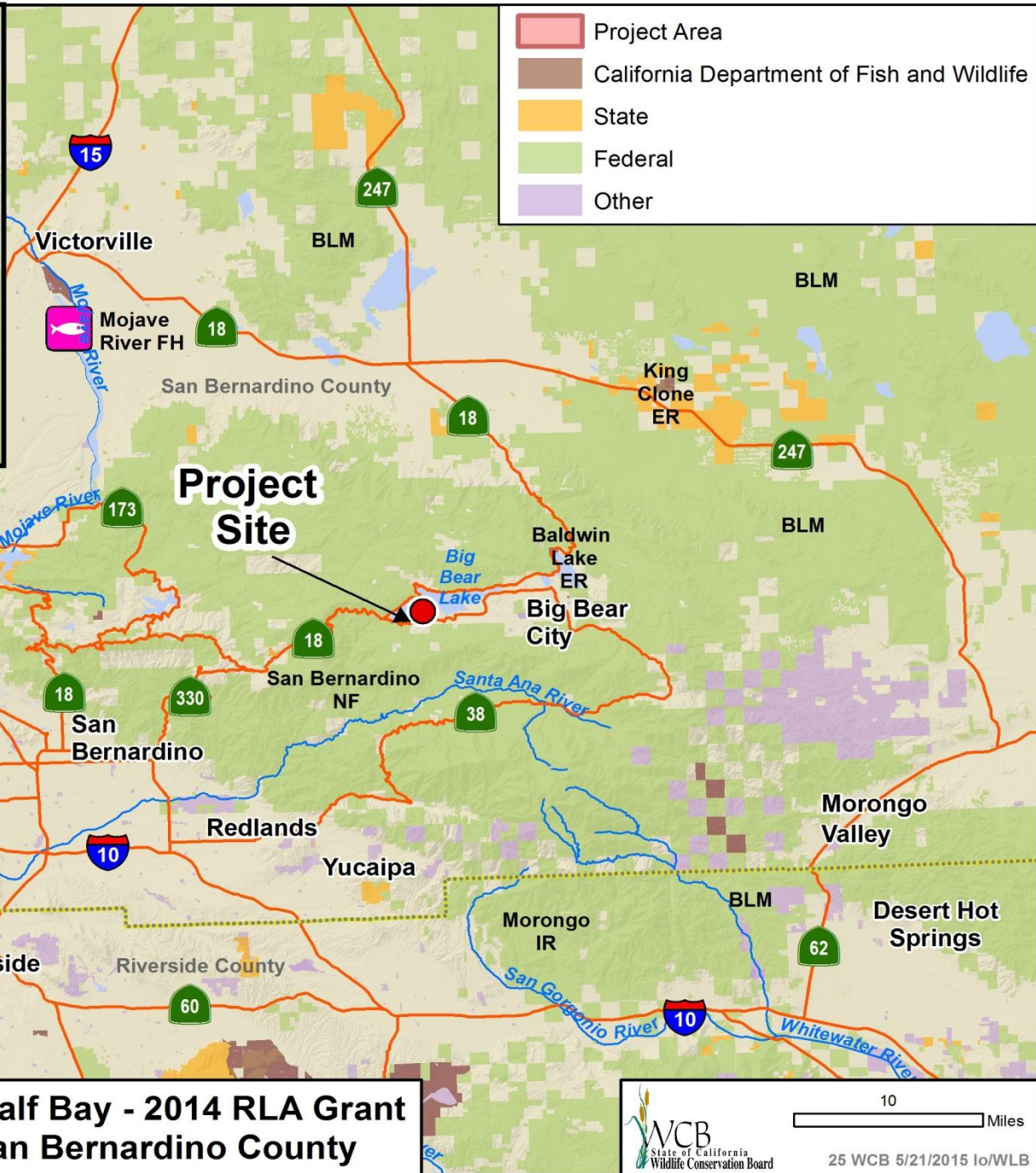


Year 0 (year planted)



Year 3

- Example of anticipated results:
  - Restored riparian habitat and floodplain function (photos)
  - Improved berm and road



**Metcalf Bay - 2014 RLA Grant  
San Bernardino County**



## #25. Metcalf Bay – 2014 RLA Grant



- Metcalf Bay, home to pedate checker-mallow, a multi-stemmed perennial herb

## #25. Metcalf Bay – 2014 RLA Grant



- Pedate checker-mallow



## #25. Metcalf Bay – 2014 RLA Grant



- Seasonal wetland of Metcalf Bay

## #25. Metcalf Bay – 2014 RLA Grant



- Habitat for numerous local species

## #25. Metcalf Bay – 2014 RLA Grant



- Fencing to prevent access to property



## #26. Santa Cruz Island Argentine Ant Elimination



- Santa Cruz Island

## #26. Santa Cruz Island Argentine Ant Elimination



- Santa Cruz Island, Argentine ant infestation sites

## #26. Santa Cruz Island Argentine Ant Elimination



- Argentine Ant infestation

## #26. Santa Cruz Island Argentine Ant Elimination



- Bait crystals, loaded with insecticide



## #26. Santa Cruz Island Argentine Ant Elimination



- Insecticide bait loaded into hopper for helicopter transport to remote sites

## #26. Santa Cruz Island Argentine Ant Elimination



- Helicopters were most effective for reaching inaccessible wildland sites, after comparison with ground-based trials

## #26. Santa Cruz Island Argentine Ant Elimination



- Ant bait is deployed to wildland site

## #26. Santa Cruz Island Argentine Ant Elimination

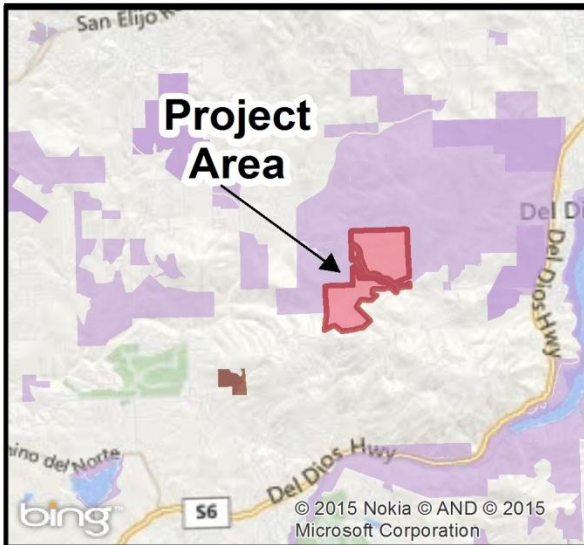


- Ants on insecticide bait

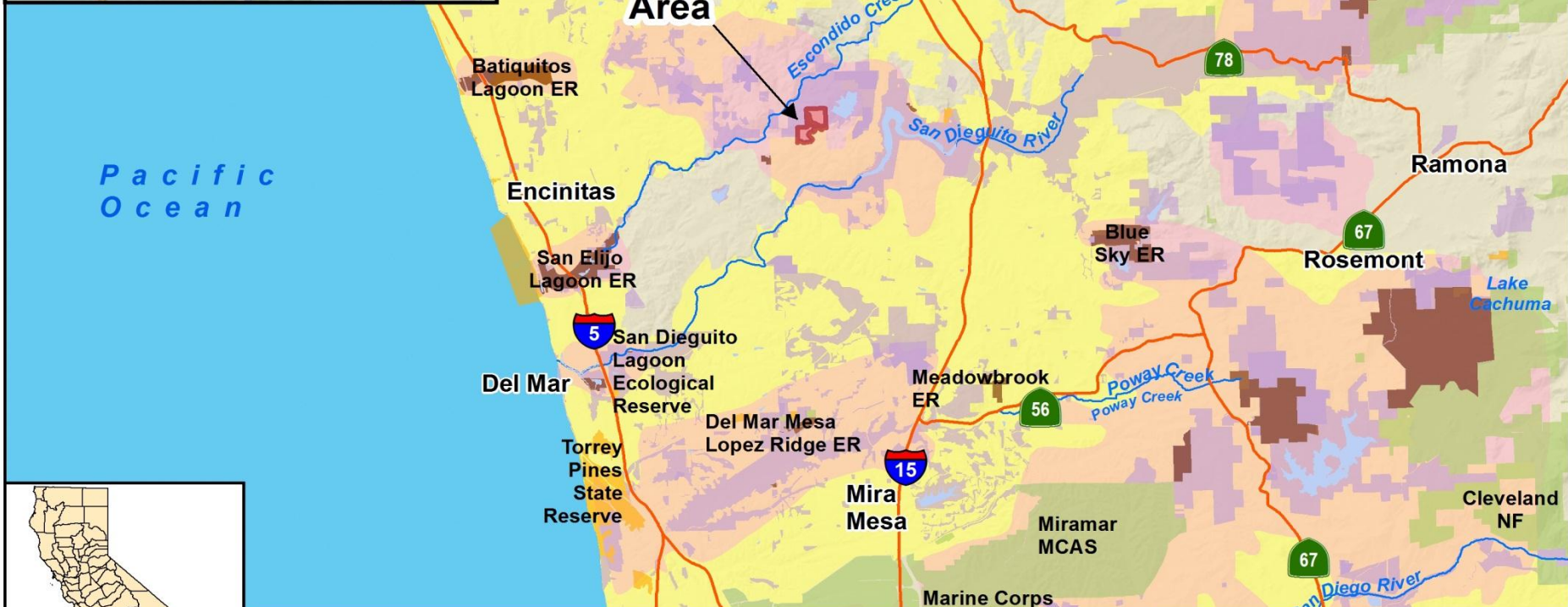
## #26. Santa Cruz Island Argentine Ant Elimination



- Island Scrub Jay



- Project Area
- California Department of Fish and Wildlife
- HCP/NCCP
- TNC Conservaton Priority Areas
- State
- Federal
- Other



**San Diego County Water Authority (Rancho Cielo)**  
**San Diego County**

WCB  
State of California  
Wildlife Conservation Board

5 Miles

27 WCB 5/21/2015 lo/WLB

## #27. San Diego County Water Authority (Rancho Cielo)



- Rolling hills on property

## #27. San Diego County Water Authority (Rancho Cielo)



- Small valley found on property



## #27. San Diego County Water Authority (Rancho Cielo)



- Low, dense vegetation on property

## #27. San Diego County Water Authority (Rancho Cielo)



- Open grassland on property