

What is a California marine protected area (or “MPA”)?

An MPA is a type of managed area whose main purpose is to protect or conserve marine life and habitats in ocean or estuarine waters. California's MPA Network consists of 124 areas with varying levels of protection and 14 special closures, all designed to help safeguard the state's marine ecosystems. Most marine conservation areas such as Anacapa Island State Marine Conservation Area provide some opportunity for commercial and/or recreational take (species and gear exceptions vary by location - see reverse).

One goal for California's MPAs was to strategically place them near each other to form an interconnected network that would help to preserve the flow of life between marine ecosystems. Within that network each MPA has unique goals and regulations, and non-consumptive activities, permitted scientific research, monitoring, and educational pursuits may be allowed.

Why was this location chosen for a state marine conservation area?

One of the goals for Anacapa Island State Marine Conservation Area is to protect the fish and invertebrates at this location, where warm water currents from the tropics and cold water currents from Alaska converge. The resulting rich and varied marine life includes many different species that live in the area's kelp forests, rocky reefs, and sandy seafloor environments, including rockfish, nudibranchs, and California spiny lobster.

Anacapa Island State Marine Conservation Area was established as one of 13 Channel Islands MPAs in 2003, and re-established as part of the statewide MPA Network in 2012. The conservation area shares a northern border with the federal Anacapa Island Marine Conservation Area and an eastern border with [Anacapa Island State Marine Reserve](#). It also overlaps a portion of [Anacapa Island Special Closure](#), the [Channel Islands National Marine Sanctuary](#), and the [Channel Islands National Park](#). Placing a state marine conservation area here provides moderately high levels of protection for marine life and the habitats they use.



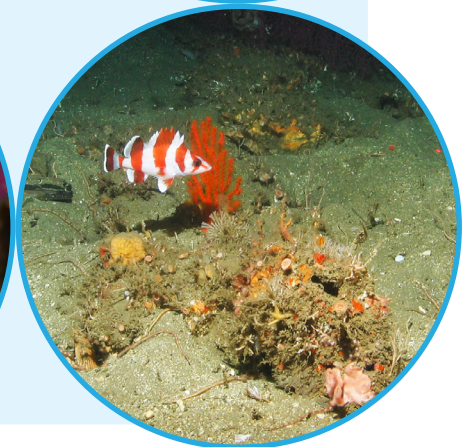
Report poachers and polluters
Call CalTIP: 1 (888) 334-2258

or text 847411 - begin message with "Caltip" followed by the details.



Quick Facts: Anacapa Island State Marine Conservation Area

- **MPA size:** 7.30 square miles
- **Shoreline span:** 2.2 miles
- **Depth range:** 0 to 490 feet
- **Habitat composition:**
 - Sand/mud: 6.78 square miles
 - Rock: 0.14 square miles



Non-Consumptive Activities



ENTRY

Entry, Boating, and Fishing Restrictions
See Regulations On Back



No Collecting

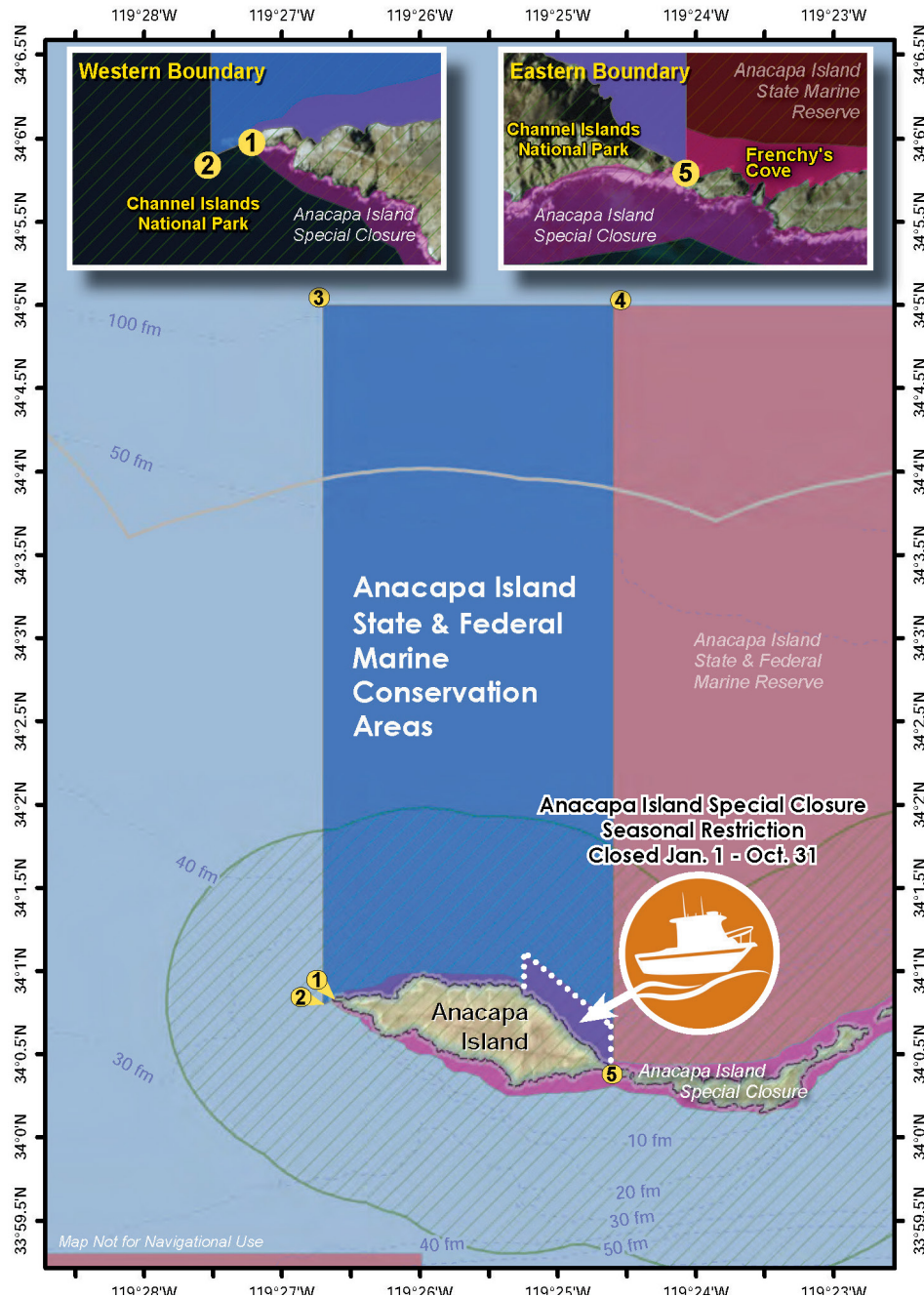
Further Information:

- MPA Website: www.wildlife.ca.gov/MPAs
- MPA and Sportfishing Interactive Map: www.wildlife.ca.gov/OceanSportfishMap
- Email: AskMarine@wildlife.ca.gov

Photos - Upper: Anacapa Island, looking west over the conservation area towards Santa Cruz Island. NOAA photo by C. Fackler **Lower right:** Flag rockfish, orange gorgonian, and various invertebrates at the conservation area. CDFW/MARE photo **Lower left:** Cockscomb nudibranch at the conservation area. photo © Douglas Klug CC BY-NC 2.0

Anacapa Island State and Federal Marine Conservation Areas

Southern California - Channel Islands



Anacapa Island State and Federal Marine Conservation Areas - Boundary and Regulations

This area includes Anacapa Island State Marine Conservation Area and the adjoining federal Anacapa Island Marine Conservation Area*. Coordinates are provided for outer boundaries of the joined state and federal areas.

Boundary:

This area is bounded by the mean high tide line and straight lines connecting the following points in the order listed:

- 34° 00.828' N. lat. 119° 26.623' W. long. ①;
- 34° 00.800' N. lat. 119° 26.700' W. long. ②;
- 34° 04.998' N. lat. 119° 26.700' W. long. ③;
- 34° 04.998' N. lat. 119° 24.600' W. long. ④; and
- 34° 00.411' N. lat. 119° 24.600' W. long. ⑤

Permitted/Prohibited Uses:

1. It is unlawful to injure, damage, take, or possess any living, geological, or cultural marine resource for commercial and/or recreational purposes, with the following specified exceptions:
 - a. The recreational take of spiny lobster and pelagic finfish** and the commercial take of spiny lobster is allowed. **[NOTE: No net or trap may be used in waters less than 20 feet deep.**
 - b. The following federally recognized tribe is exempt from the area and take regulations for Anacapa Island State Marine Conservation Area and shall comply with all other existing regulations and statutes: Santa Ynez Band of Chumash Indians.

* The state conservation area and federal conservation area share identical regulations. For state conservation area boundaries only, see CCR Title 14, Section 632. For federal conservation area boundaries only, see Code of Federal Regulations, Federal Register 15 Part 922 and 50 CFR Part 660.

** Pelagic finfish are defined here as: northern anchovy (*Engraulis mordax*), barracudas (*Sphyraena* spp.), billfishes* (family Istiophoridae), dolphinfish (*Coryphaena hippurus*), Pacific herring (*Clupea pallasii*), jack mackerel (*Trachurus symmetricus*), Pacific mackerel (*Scomber japonicus*), salmon (*Oncorhynchus* spp.), Pacific sardine (*Sardinops sagax*), blue shark (*Prionace glauca*), salmon shark (*Lamna ditropis*), shortfin mako shark (*Isurus oxyrinchus*), thresher sharks (*Alopias* spp.), swordfish (*Xiphias gladius*), tunas (family Scombridae) including Pacific bonito (*Sarda chiliensis*), and yellowtail (*Seriola lalandi*). *Marlin is not allowed for commercial take.

Take may be authorized for research, restoration, and monitoring purposes under a scientific collecting permit. See California Code of Regulations Title 14, Section 632(a).

The information in this document does not replace the official regulatory language found in the California Code of Regulations Title 14, Section 632. View these regulations online at www.wildlife.ca.gov/CCR-T14-MPAs.

Information about [Anacapa Island Special Closure](#)