

What is a California marine protected area (or “MPA”)?

An MPA is a type of managed area primarily set aside to protect or conserve marine life and habitats in marine or estuarine waters. California's MPA Network consists of 124 areas with varying levels of protection, and 14 special closures, all designed to help safeguard the state's marine ecosystems. Fishing and collecting are banned at marine reserves such as Anacapa Island State Marine Reserve, providing this MPA with the highest level of protection.

One goal for California's MPAs was to strategically place them near each other to form an interconnected network that would help to preserve the flow of life between marine ecosystems. Within that network each MPA has unique goals and regulations, and non-consumptive activities, permitted scientific research, monitoring, and educational pursuits may be allowed.

Why was this location chosen for a state marine reserve?

One of the goals for Anacapa Island State Marine Reserve is to protect the rich and varied marine life at this location, where warm water currents from the tropics and cold water currents from Alaska converge. California sheephead, sanddabs, kelp bass, California spiny lobster, and many other fishes and invertebrates forage and find shelter in the reserve's kelp forest, sandy seafloor, surfgrass bed, and rocky reef habitats.

Anacapa Island State Marine Reserve was established as one of 13 Channel Islands MPAs in 2003, and re-established as part of the statewide MPA Network in 2012. The reserve shares a northern border with the federal Anacapa Island Marine Reserve and a western border with [Anacapa Island State Marine Conservation Area](#). It also overlaps a portion of [Anacapa Island Special Closure](#), the [Channel Islands National Marine Sanctuary](#), and [Channel Islands National Park](#). Placing a state marine reserve here provides very high levels of protection for local marine species and the habitats they use.



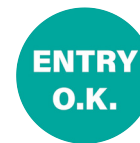
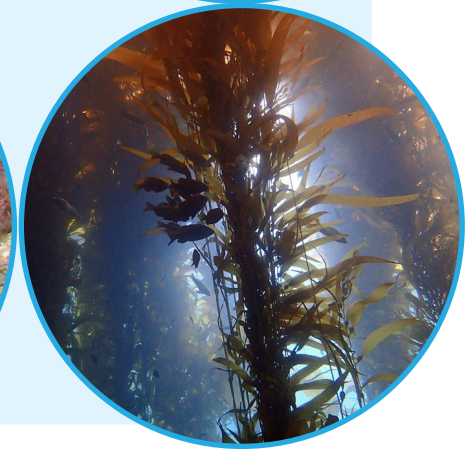
Report poachers and polluters
Call CalTIP: 1 (888) 334-2258

or text 847411 - begin message with "Caltip"
followed by the details.



Quick Facts: Anacapa Island State Marine Reserve

- **MPA size:** 11.55 square miles
- **Shoreline span:** 3.1 miles
- **Depth range:** 0 to 709 feet
- **Habitat composition:**
 - Rock: 0.38 square miles
 - Sand/mud: 11.15 square miles



Non-Consumptive Activities

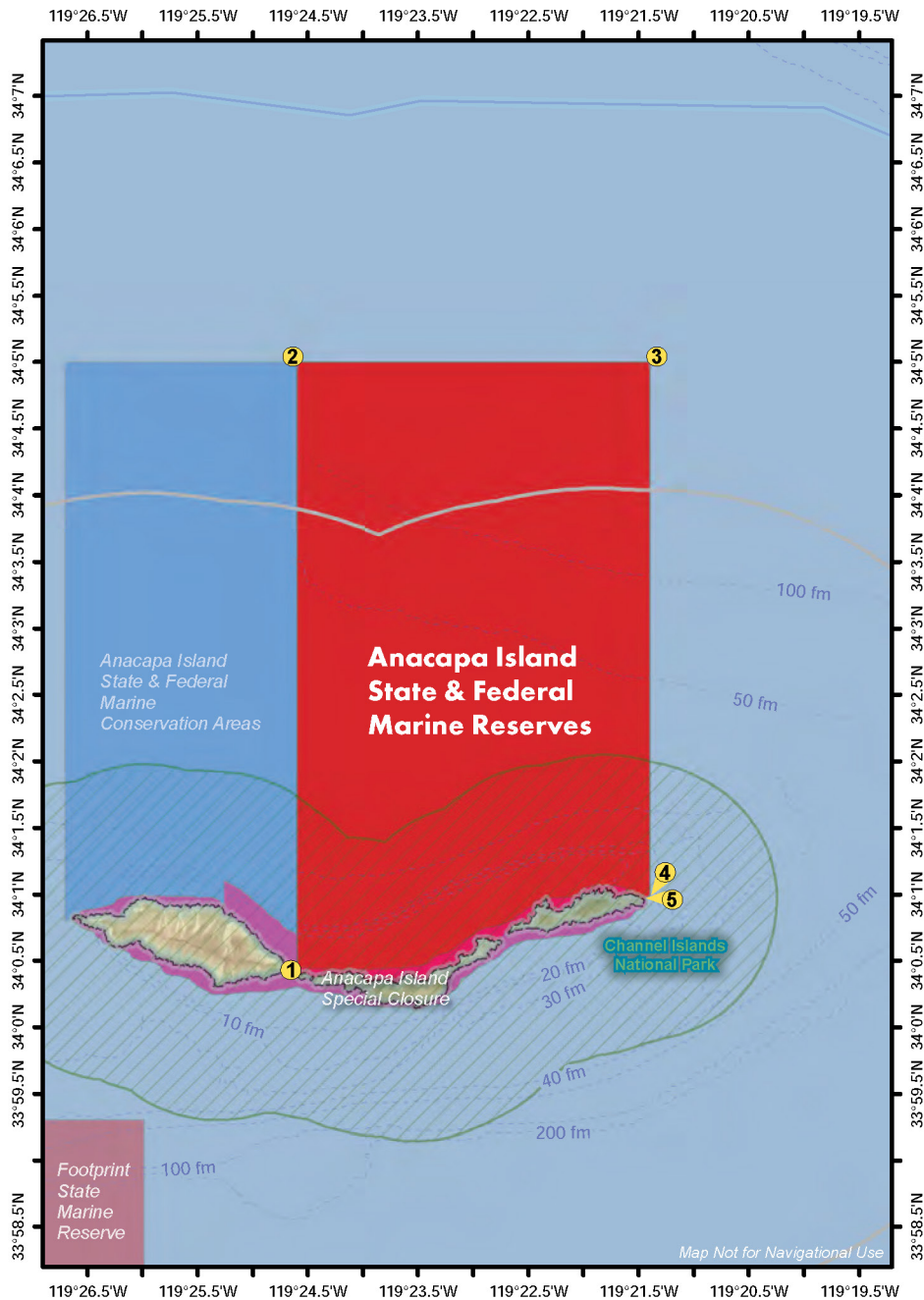
No Fishing

No Collecting

Further Information:

- MPA Website: www.wildlife.ca.gov/MPAs
- MPA and Sportfishing Interactive Map: www.wildlife.ca.gov/OceanSportfishMap
- Email: AskMarine@wildlife.ca.gov

Photos - Upper: Eastern end of Anacapa Island State Marine Reserve, photo © Dave Proffer CC BY-NC-SA 2.0. Lower right: Kelp bass in the kelp forest at the reserve, photo © ckopcakcsc CC BY-NC 2.0. Lower left: California spiny lobsters amid brittle stars at the reserve, CDFW/MARE photo.



Anacapa Island State and Federal Marine Reserves Boundary and Regulations

This area includes Anacapa Island State Marine Reserve and the adjoining federal Anacapa Island Marine Reserve*. Coordinates are provided for outer boundaries of the joined state and federal areas.

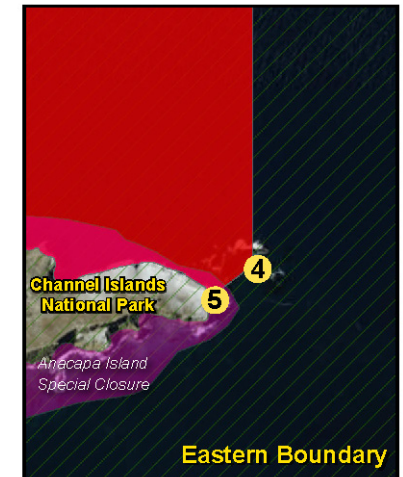
Boundary:

This area is bounded by the mean high tide line and straight lines connecting the following points in the order listed:

- 34° 00.411' N. lat. 119° 24.600' W. long. ①;
- 34° 04.998' N. lat. 119° 24.600' W. long. ②;
- 34° 04.998' N. lat. 119° 21.400' W. long. ③;
- 34° 01.000' N. lat. 119° 21.400' W. long. ④; and
- 34° 00.960' N. lat. 119° 21.463' W. long. ⑤

Permitted/Prohibited Uses:

It is unlawful to injure, damage, take, or possess any living, geological, or cultural marine resource.



* The state reserve and federal reserve share identical regulations. For state reserve boundaries only, see CCR Title 14, Section 632. For federal reserve boundaries only, see Code of Federal Regulations, Federal Register 15 Part 922 and 50 CFR Part 660.

Take may be authorized for research, restoration, and monitoring purposes under a scientific collecting permit. See California Code of Regulations Title 14, Section 632(a).

The information in this document does not replace the official regulatory language found in the California Code of Regulations Title 14, Section 632. View these regulations online at www.wildlife.ca.gov/CCR-T14-MPAs.