

### What is a California marine protected area (or "MPA")?

An MPA is a type of managed area primarily set aside to protect or conserve marine life and habitats in marine or estuarine waters. California's MPA Network consists of 124 areas with varying levels of protection, and 14 special closures, all designed to help safeguard the state's marine ecosystems. Fishing and collecting are banned at marine reserves such as Santa Barbara Island State Marine Reserve, providing this MPA with the highest level of protection.

One goal for California's MPAs was to strategically place them near each other to form an interconnected network that would help to preserve the flow of life between marine ecosystems. Within that network each MPA has unique goals and regulations, and non-consumptive activities, permitted scientific research, monitoring, and educational pursuits may be allowed.

### Why was this location chosen for a state marine reserve?

One of the goals for Santa Barbara Island State Marine Reserve is to protect the sandy seafloor, surfgrass, kelp forest, and rocky nearshore habitat found there. Sea urchins, California mussels, and acorn barnacles thrive along the island's rocky coastline. Giant sea bass, California sheephead, and Pacific angel sharks hunt and seek shelter in the island's kelp forests and eelgrass beds, while California halibut and other flatfish rest in the sandy sediments. Santa Barbara Island is also home to a large breeding colony of Scripps's murrelet, a seabird on California's threatened species list, and fourteen other species of bird.

Santa Barbara Island State Marine Reserve was established as one of 13 Channel Islands MPAs in 2003, and re-established as part of the statewide MPA Network in 2012. This state marine reserve shares a southeastern border with the federal Santa Barbara Island Marine Reserve. The reserve overlaps part of the [Channel Islands National Park](#) and [Channel Islands National Marine Sanctuary](#). Placing a state marine reserve here provides very high levels of protection for local marine species and the habitats they use.



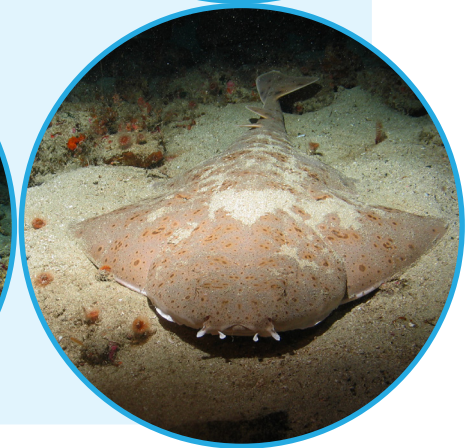
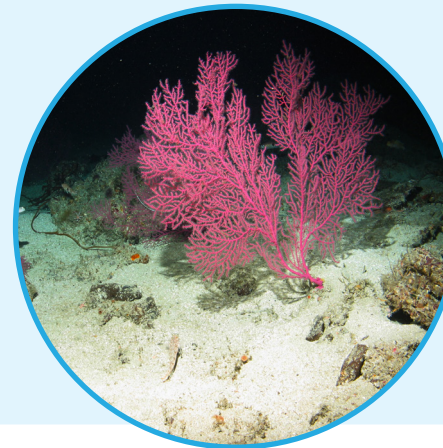
Report poachers and polluters  
Call CalTIP: 1 (888) 334-2258

or text 847411 - begin message with "Caltip"  
followed by the details.



### Quick Facts: Santa Barbara Island State Marine Reserve

- **MPA size:** 12.77 square miles
- **Shoreline span:** 0.8 miles
- **Depth range:** 0 to 1,655 feet
- **Habitat composition:**  
Rock: 0.74 square miles  
Sand/mud: 2.43 square miles



Non-Consumptive  
Activities

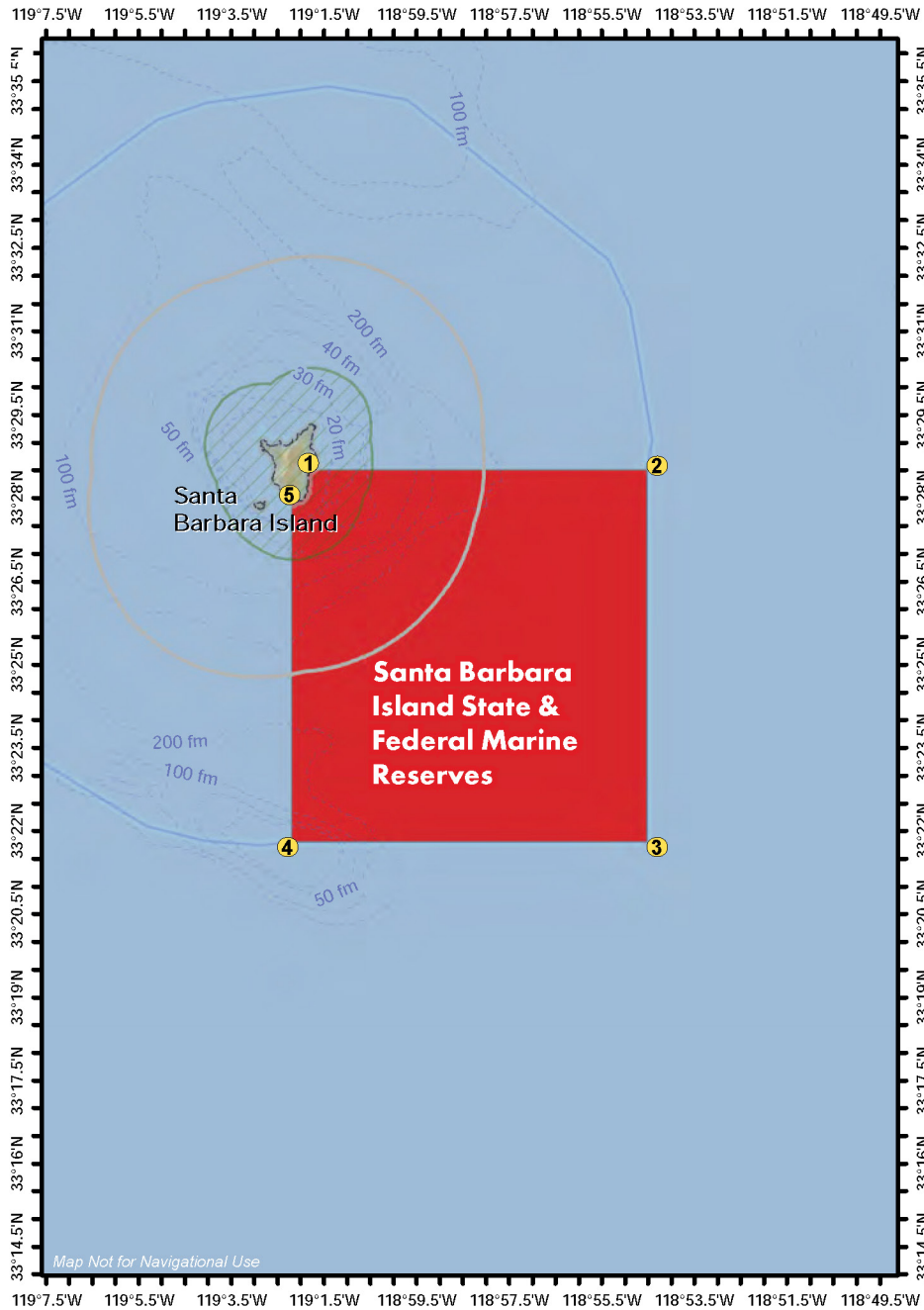
No Fishing

No Collecting

### Further Information:

- MPA Website: [www.wildlife.ca.gov/MPAs](http://www.wildlife.ca.gov/MPAs)
- MPA and Sportfishing Interactive Map: [www.wildlife.ca.gov/OceanSportfishMap](http://www.wildlife.ca.gov/OceanSportfishMap)
- Email: [AskMarine@wildlife.ca.gov](mailto:AskMarine@wildlife.ca.gov)

Photos - Upper: Aerial view of Santa Barbara Island, photo © Jesse Hodge CC BY-NC-ND 2.0.  
Lower right: Pacific angel shark at Santa Barbara Island State Marine Reserve, CDFW/MARE photo.  
Lower left: Pink gorgonian at Santa Barbara Island State Marine Reserve, CDFW/MARE photo.



## Santa Barbara Island State and Federal Marine Reserves - Boundary and Regulations

This area includes Santa Barbara Island State Marine Reserve and the adjoining federal Santa Barbara Island Marine Reserve\*. Coordinates are provided for outer boundaries of the joined state and federal areas.

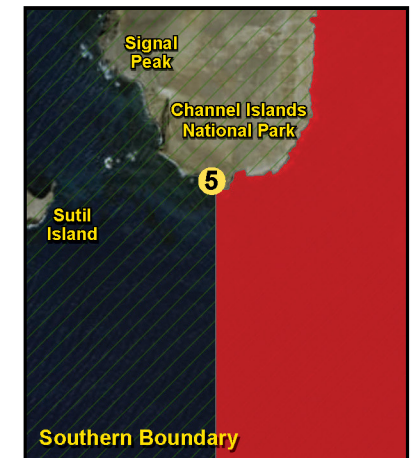
### Boundary:

This area is bounded by the mean high tide line and straight lines connecting the following points in the order listed:

- 33° 28.500' N. lat. 119° 01.813' W. long. ①;
- 33° 28.500' N. lat. 118° 54.527' W. long. ②;
- 33° 21.792' N. lat. 118° 54.527' W. long. ③;
- 33° 21.792' N. lat. 119° 02.200' W. long. ④; and
- 33° 27.911' N. lat. 119° 02.200' W. long. ⑤

### Permitted/Prohibited Uses:

It is unlawful to injure, damage, take, or possess any living, geological, or cultural marine resource.



\* The state reserve and federal reserve share identical regulations. For state reserve boundaries only, see CCR Title 14, Section 632. For federal reserve boundaries only, see Code of Federal Regulations, Federal Register 15 Part 922 and 50 CFR Part 660.

Take may be authorized for research, restoration, and monitoring purposes under a scientific collecting permit. See California Code of Regulations Title 14, Section 632(a).

The information in this document does not replace the official regulatory language found in the California Code of Regulations Title 14, Section 632. View these regulations online at [www.wildlife.ca.gov/CCR-T14-MPAs](http://www.wildlife.ca.gov/CCR-T14-MPAs)