



PROTOCOL FOR CDFW HATCHERY ANADROMOUS FISH OR EGG REQUESTS

CDFW hatchery fish are raised with limited, dedicated funding. Fish and eggs allocated for research are those produced in excess of the mitigation requirement of each anadromous hatchery. For this reason it is necessary to have all requests known prior to spawning so that surpluses for research can be accommodated. Unforeseen circumstances (such as drought) may effect production at hatcheries and may compromise CDFW's ability to supply requested fish/eggs.

To help the Department anticipate and accommodate egg and fish requests, REQUESTS FOR ANADROMOUS SPECIES MUST BE SUBMITTED **BY AUGUST 1st**.

A formal request letter on your company, agency or university letterhead is required and must include:

- A full proposal describing the proposed activity
 - Number of fish, eggs or fish products requested
 - Size or age
 - Species
 - Date(s) when fish, eggs or fish products are needed
 - Reason for request (i.e. intended use of requested fish or fish products)
 - Disposition of the fish, eggs or fish materials after the termination of experiments
 - Location where the tests will be conducted
 - Preferred hatchery source with explanation
 - If *any* hatchery is acceptable, please indicate so
 - Methods and anticipated results (data gathered)
 - Proposals for hatchery fish and fish products should identify the main intent of research and its relevance to fishery management issues
 - A Scientific Collecting Permit will be required for non-state listed species with the potential to interact with natural biota/ecosystems. A CESA MOU is required for all state listed species with the potential to interact with natural biota/ecosystems.
 - If applicable, include Scientific Collecting Permit number for the proposed activity.
 - All other applicable permitting (e.g. Federal) will still be required
 - Any other relevant information

CDFW Fisheries Branch, Hatchery and Regional staff will review proposals after the August 1st deadline and will make research allocation decisions at one meeting. Requests for anadromous fish received after August 1st will not be considered for the following spawning/incubation/production/release cycle.

Requests for public educational purposes will also be considered.

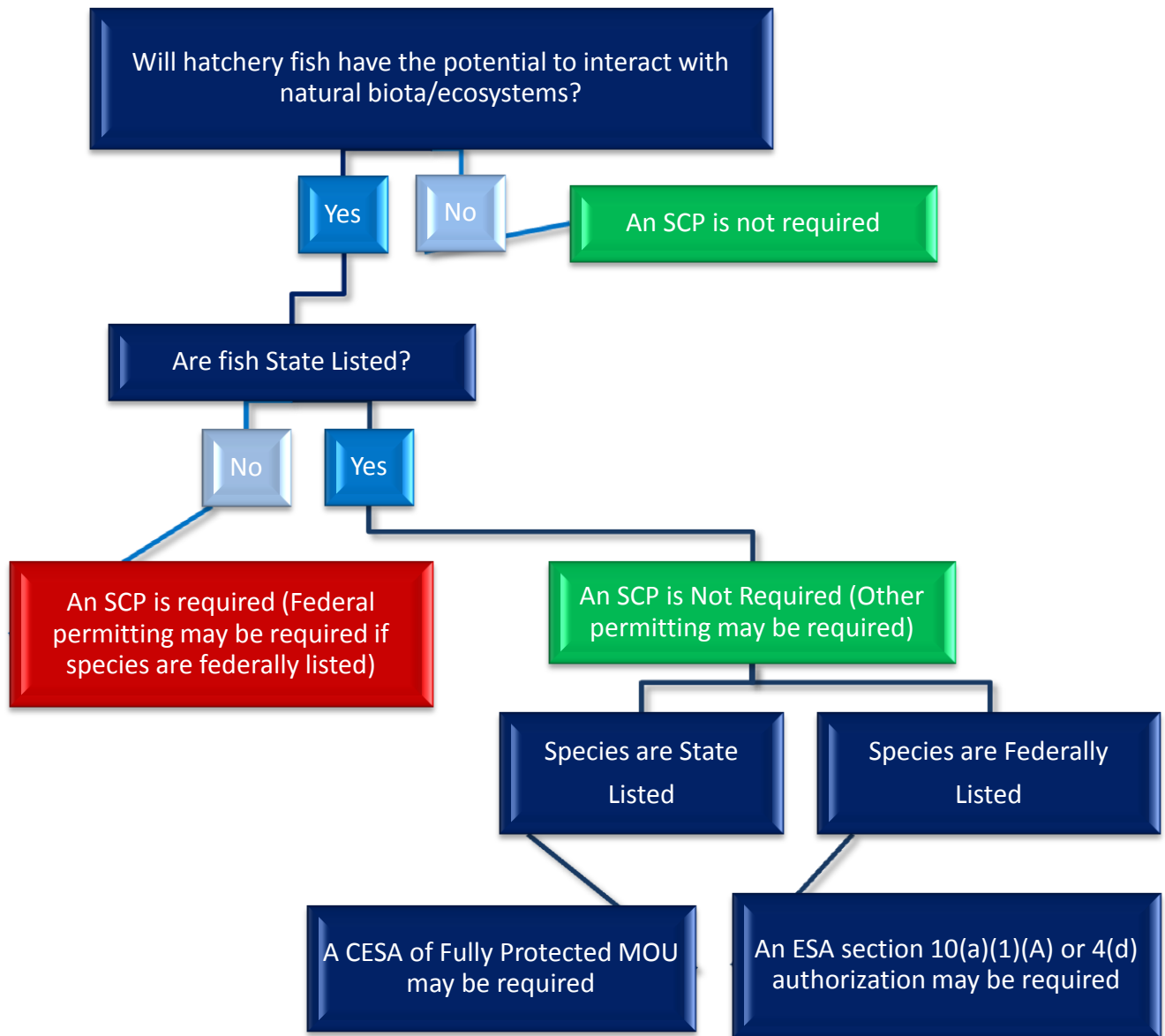
Following Department review of proposals, the Hatchery Coordinator will write a letter to the requestor to notify them of the decision to approve or denying the request.

Approved requests will require that researchers supply reports, data, and/or publications resulting from the conducted research to CDFW for discretionary fishery management applications.

The request packet including proposal, summary of test results, and any publications or reports should be submitted (e-mailed preferred) to:

Dr. Mark Clifford
Hatchery Coordinator
California Dept of Fish and Wildlife
#3 North Old Stage Road
Mount Shasta, CA 96067
mark.clifford@wildlife.ca.gov

SCPs for Take of Fish from the Hatchery



Hatchery Fish - Any fish produced and raised in captivity (F&GC 1800).

Natural Origin Fish – Any fish produced in the wild that is brought into the hatchery.