

What is a California marine protected area (or “MPA”)?

An MPA is a type of managed area whose main purpose is to protect or conserve marine life and habitats in ocean or estuarine waters. California's MPA Network consists of 124 areas with varying levels of protection and 14 special closures, all designed to help safeguard the state's marine ecosystems. Special closures such as Anacapa Island Special Closure are specifically designed to minimize human disturbance at significant marine mammal haulout sites and seabird rookeries by restricting boating and access, seasonally or year-round.

One goal for California's MPAs was to strategically place them near each other to form an interconnected network that would help to preserve the flow of life between marine ecosystems. Within that network each MPA has unique goals and regulations, and non-consumptive activities, permitted scientific research, monitoring, and educational pursuits may be allowed.

Why was this location chosen for a special closure?

One of the goals for Anacapa Island Special Closure is to shield nesting seabirds from human disturbance. The world's largest breeding colonies of California brown pelicans and western gulls are found on the steep cliffs of West Anacapa Island. This location is ideal for seabirds, thanks to high prey concentrations and warm ocean waters. The rocky and isolated shores also provide resting and breeding areas for California sea lions and harbor seals.

Anacapa Island Special Closure was established in 2005, and re-established along with the statewide MPA Network in 2012. The special closure overlaps the nearshore portion of [Anacapa Island State Marine Reserve](#), [Anacapa Island State Marine Conservation Area](#), the [Channel Islands National Marine Sanctuary](#), and [Channel Islands National Park](#). Placing a special closure here provides very high levels of protection for seabirds, marine mammals, and the habitats they use.



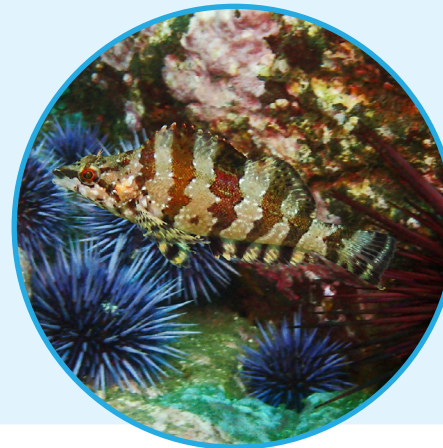
Report poachers and polluters
Call CalTIP: 1 (888) 334-2258

or text 847411 - begin message with "Caltip"
followed by the details.



Quick Facts: Anacapa Island Special Closure

- **Size:** 1.03 square miles
- **Depth range:** 0 to 124 feet
- **Habitat composition:**
Sand/mud: 0.53 square miles
Rock: 0.44 square miles

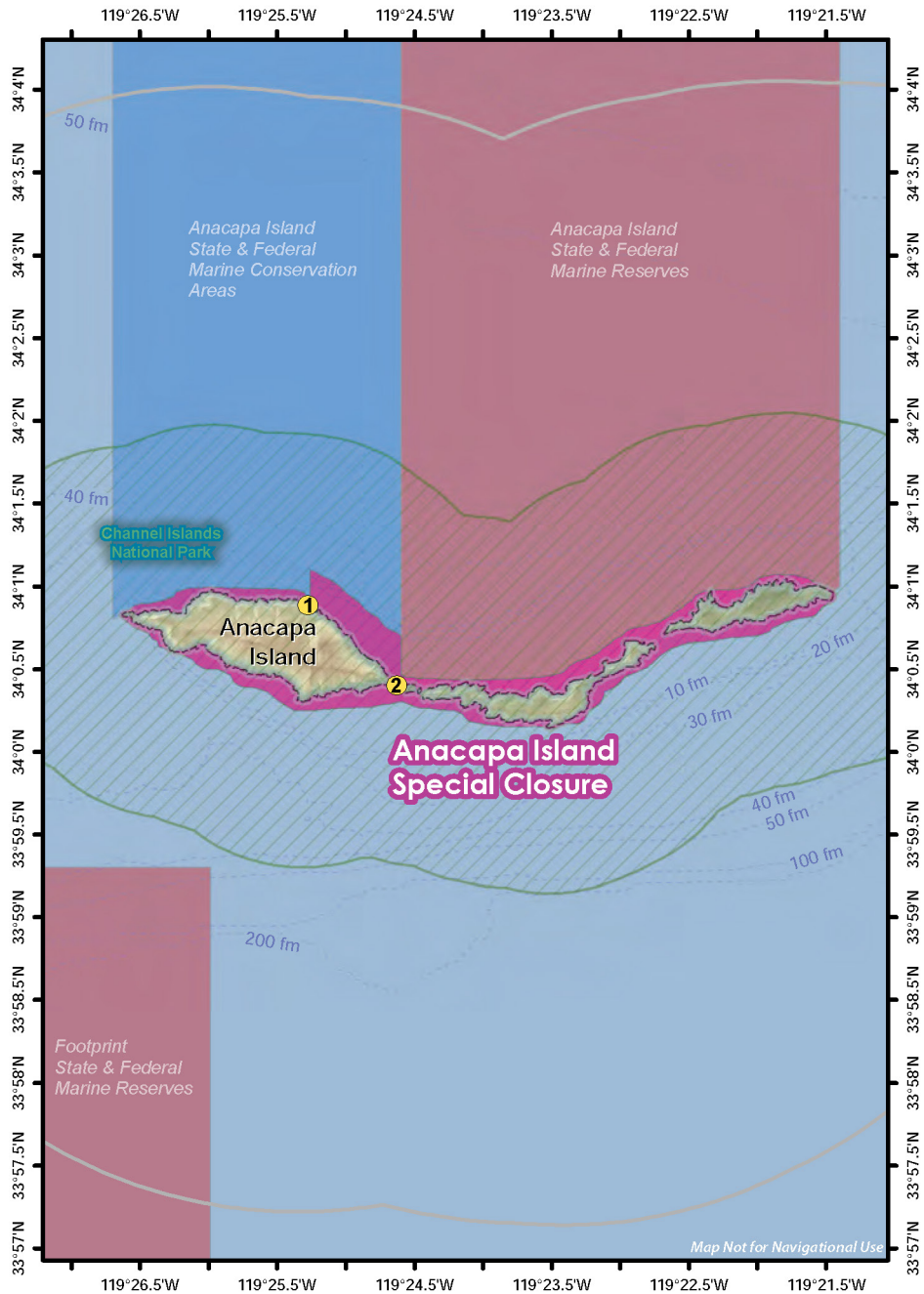


Restrictions on Entry, Non-Consumptive Activities, Collecting, and Fishing
See Regulations On Back

Further Information:

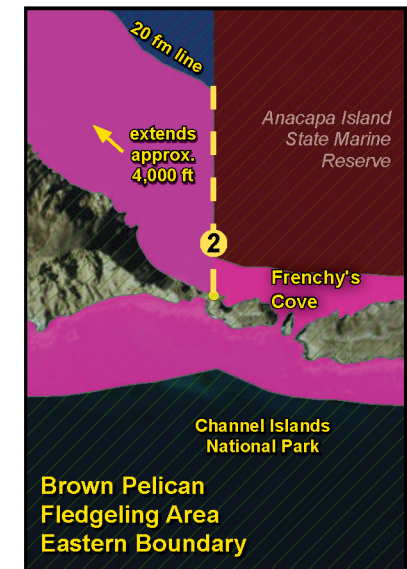
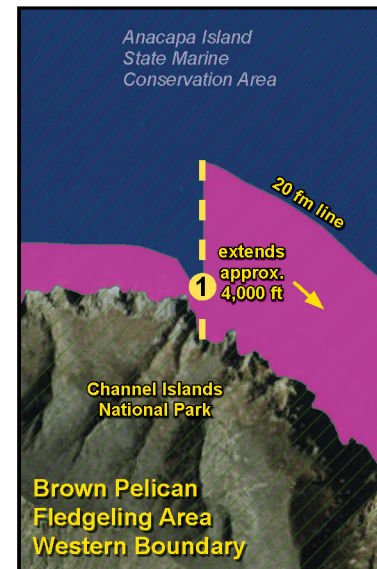
- MPA Website: www.wildlife.ca.gov/MPAs
- MPA and Sportfishing Interactive Map: www.wildlife.ca.gov/OceanSportfishMap
- Email: AskMarine@wildlife.ca.gov

Photos - **Upper:** Anacapa Island, looking west over the special closure towards Santa Cruz Island. photo © Brian Hawkins CC BY-NC 2.0 **Lower right:** Brown pelican at the special closure. photo © Zack Abbey CC BY-NC 2.0 **Lower left:** Painted greenling and sea urchins at the special closure. photo © orobourical CC BY-NC 2.0



Anacapa Island Special Closure Boundary and Regulations from California Code of Regulations Title 14, Section 632

1. No net or trap may be used in waters less than **20 feet deep** off the Anacapa Islands commonly referred to as Anacapa Island.
2. A brown pelican fledgling area is designated from the mean high tide mark seaward to a water depth of **20 fathoms (120 feet)** on the north side of West Anacapa Island between a line extending 000° True off Portuguese Rock (34° 00.910' N. lat. 119° 25.260' W. long. ①) to a line extending 000° True off the western edge of Frenchy's Cove (34° 00.411' N. lat. 119° 24.600' W. long. ②), a distance of approximately 4,000 feet. No person except department employees or employees of the National Park Service in the performance of their official duties shall enter this area during the period January 1 to October 31.



Take may be authorized for research, restoration, and monitoring purposes under a scientific collecting permit. See California Code of Regulations Title 14, Section 632(a).

The information in this document does not replace the official regulatory language found in the California Code of Regulations Title 14, Section 632. View these regulations online at www.wildlife.ca.gov/CCR-T14-MPAs.