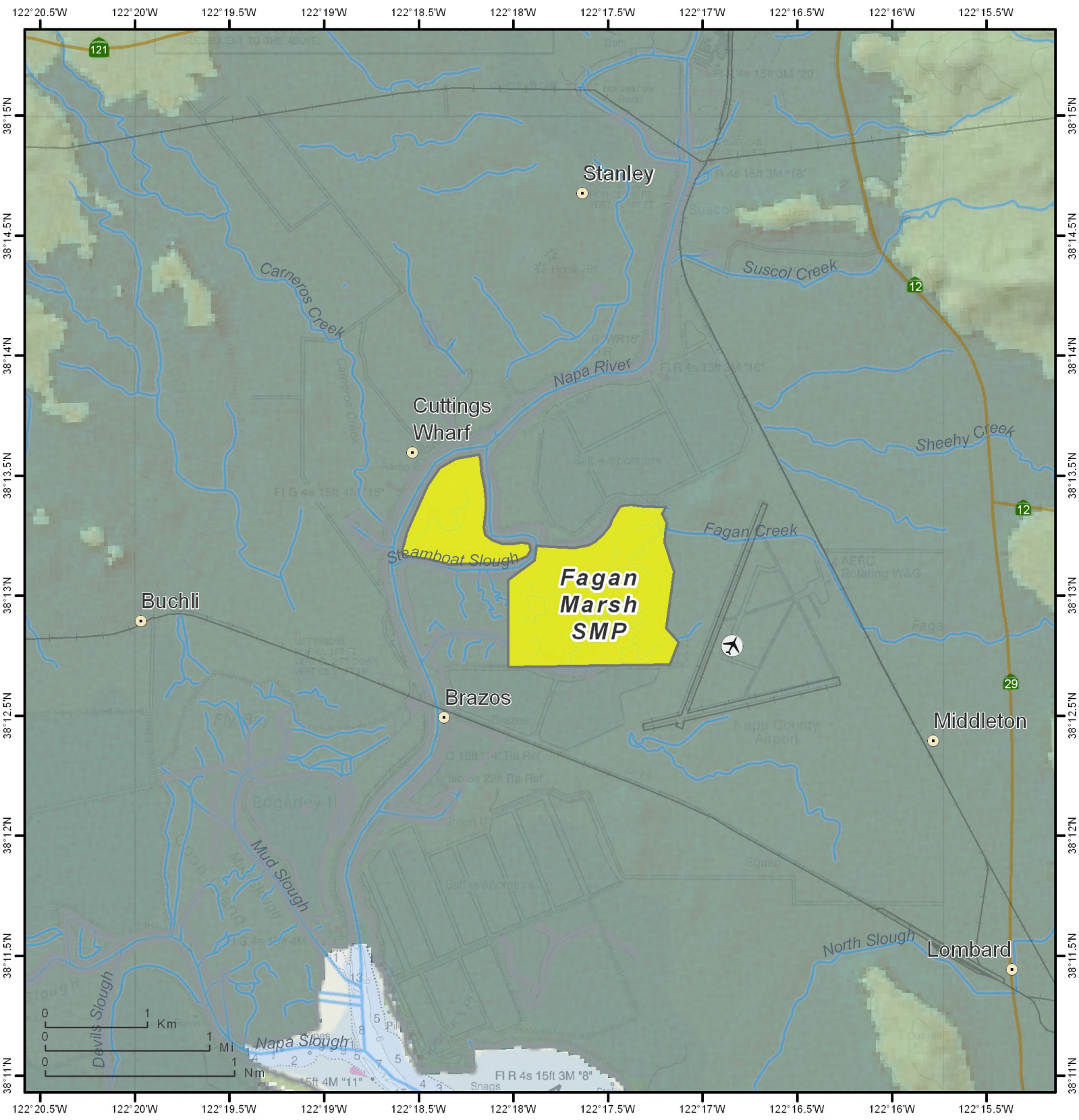


# California Marine Protected Areas



**THIS CHART DOES NOT REPLACE THE LEGAL DESCRIPTION FOUND IN TITLE 14, CALIFORNIA CODE OF REGULATIONS**

	State Marine Reserve (SMR)		State Marine Recreational Management Area (SMRMA)		Dual Designation (SMCA and SMP)		Three Nautical Mile Maritime Limit (State Water Jurisdiction)	
	State Marine Conservation Area (SMCA - No Take)		State Marine Park (SMP)		Federal Marine Conservation Area (FMCA)		Coastal Access	
	State Marine Conservation Area (SMCA)		Special Closure		Federal Marine Reserve (FMR)			

1:50,000  
(print size 8.5" x 11")