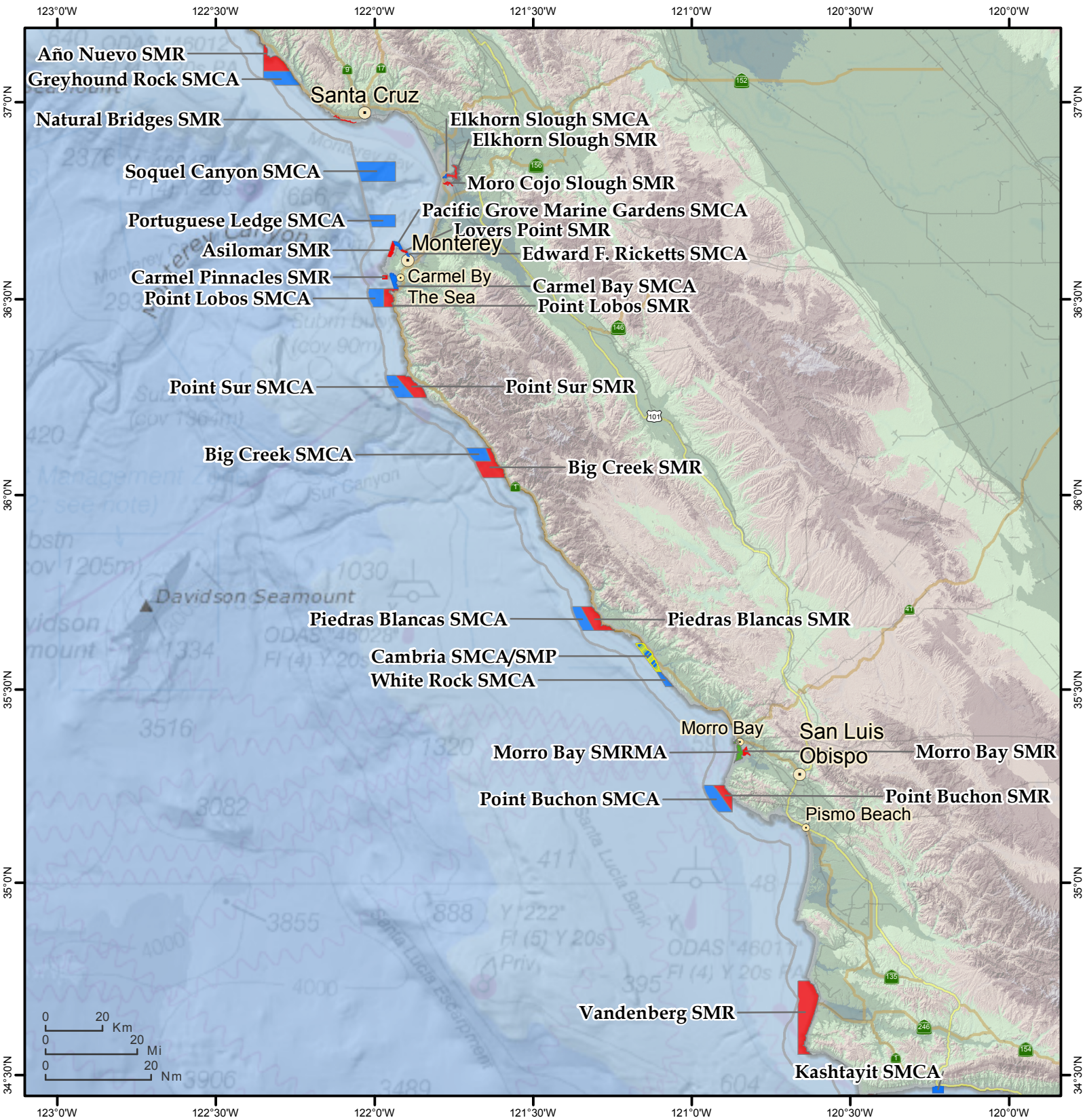


# California Central Coast MPAs



**THIS CHART DOES NOT REPLACE THE LEGAL DESCRIPTION FOUND IN TITLE 14, CALIFORNIA CODE OF REGULATIONS**

- State Marine Reserve (SMR)
- State Marine Conservation Area (SMCA)
- State Marine Recreational Management Area (SMRMA)
- Dual Designation (SMCA and SMP)
- Three Nautical Mile Maritime Limit (State Water Jurisdiction)



1:1,800,000  
(@ print size 8.5" x 11")

