



State of California
Department of Fish and Wildlife

M e m o r a n d u m

Date: July 16, 2015

To: Kevin Thomas
Senior Environmental Scientist Supervisor
Department of Fish and Wildlife

From: Ben Ewing
District Fisheries Biologist
Alpine, Amador, Calaveras, and Lake Counties
Department of Fish and Wildlife

Cc: Fish Files

Re: Adobe Creek and Adobe Reservoir (Lake County) Fish Observations

On July 16, 2015, California Department of Fish and Wildlife (Department) personnel, along with staff from Robinson Rancheria and Big Valley Rancheria tribes, conducted multiple fish observations on Adobe Creek (Lake County). The purpose of the observations was to determine if there were stranded Clear Lake hitch (*Lavinia exilicauda chi*) (CLH) in isolated pools along the creek and the possibility of CLH in Adobe Reservoir. Currently, CLH is a threatened species under the California Endangered Species Act (CESA).

The first site inspected was at Adobe Reservoir and just below the outlet on Adobe Creek (Figure 1). A small isolated pool that was quickly drying up had been identified by a Robinson Rancheria member as a pool possibly holding CLH. Only western mosquitofish (*Gambusia affinis*) were seen in the pool. Multiple fish were seen jumping out of the water in Adobe Reservoir. No positive identification on the species was made. The Department will try and make an effort to survey Adobe Reservoir in order to gather further information on the species composition of the reservoir.

The second site inspected was at Adobe Creek just above Adobe Reservoir (Figure 1). Another small isolated pool that was quickly drying up had been identified by a Robinson Rancheria member as a pool possibly holding CLH. A large pod of California roach (*Lavinia symmetricus*) were collected by dip net in the pool (Figure 2). No other species were identified in the pool.

The third site inspected was on Adobe Creek at Bell Hill Road, downstream of Adobe Reservoir (Figure 1). Another small isolated pool that was quickly drying up had been identified by a Robinson Rancheria member as a pool possibly holding CLH (Figure 3). Only largemouth bass (*Micropterus salmoides*) and bluegill (*Lepomis macrochirus*) were seen in the pool.

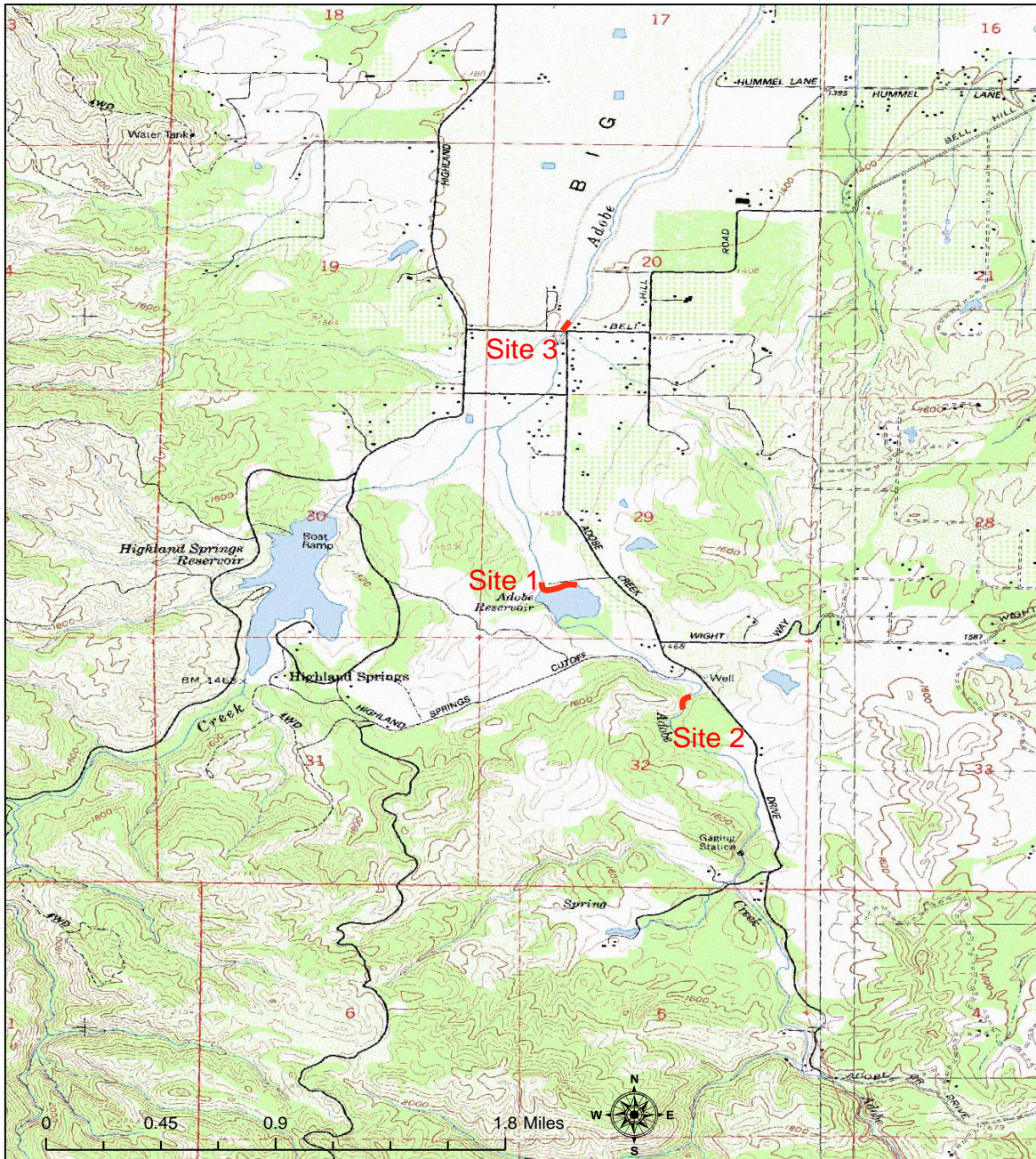


Figure 1. Adobe Reservoir/Creek Site Visits (7/15/15) (Lake County, CA).



Figure 2. California roach collected on Adobe Creek upstream of Adobe Reservoir on 7/15/2015. Photo by B. Ewing.



Figure 3. Isolated pool located on Adobe Creek at Bell Hill Road crossing 7/15/2015. Photo by B. Ewing.

The Department determined no fish rescues would be made due to the fact that no CLH were seen in any of the three pools.

