
**The Newhall Land And Farming Company, "Draft Master Streambed
Alteration Agreement Package for the Resource Management and
Development Plan" (June 12, 2008)**

June 12, 2008

Mr. Dennis Bedford
 California Department of Fish and Game
 South Coast Region (5)
 4949 Viewridge Avenue
 San Diego, CA 92123

Re: Submittal of the Draft Master Streambed Alteration Agreement Package (1600-2004-0016-R5)
 Resource Management and Development Plan – Newhall Ranch Project

Mr. Bedford:

Newhall Land is pleased to submit the attached Draft Master Streambed Alteration Agreement (MSAA) package for the Newhall Ranch Resource Management and Development Plan (RMDP). The package has been developed over the last 12 months in consultation with Region 5 staff and the Department's legal counsel.

The attached package includes the Draft MSAA, the project-specific 1605 Subnotification forms, and project-level graphics with related impact and mitigation data. Please review the attached and let us know when you will be available to meet with Newhall to go over the MSAA package.

Newhall Land appreciates the Department's continued cooperation on the Project. Please do not hesitate to call me (661-255-4259) with any questions or to discuss.

Sincerely,

NEWHALL LAND


 Matt Carpenter
 Director, Environmental Resources

cc: S. Puccini
 J. Mattox
 M. Subbotin
 S. Rojas

Attachment: Draft Master Streambed Alteration Agreement package, dated June 12, 2008

CALIFORNIA DEPARTMENT OF FISH AND GAME

Region 5
4949 Viewridge Avenue
San Diego, CA 92123-1662

Notification No. 1600-2004-0016-R5

MASTER STREAMBED ALTERATION AGREEMENT

I. PURPOSE

This Master Streambed Alteration Agreement (Agreement) is entered into between the California Department of Fish and Game (Department) and The Newhall Land and Farming Company (Newhall) pursuant to Fish and Game Code sections 1602 and 1605. The purpose of this Agreement is to establish measures to protect and conserve fish and wildlife resources that could be substantially adversely affected by Newhall's construction, operation, maintenance, and repair of proposed bridges, roads, flood control structures, drainage facilities, utilities, trails, and associated infrastructure in or near the Santa Clara River and its tributary drainages, which are needed to implement the Newhall Ranch Specific Plan, as described in the Newhall Ranch Resource Management and Development Plan (Newhall Ranch RMDP). The Newhall Ranch RMDP is intended to direct both resource management and development within the boundaries of the RMDP study area, as described herein.

II. RECITALS

WHEREAS, the Department is trustee for fish and wildlife resources of the State of California.

WHEREAS, the Legislature has declared that the protection and conservation of the State's fish and wildlife resources are of utmost public interest, and fish and wildlife conservation is a proper responsibility of the State.

WHEREAS, Fish and Game Code section 1602 requires any person, state or local governmental agency, or public utility to notify the Department before beginning activity that will do one or more of the following: (1) substantially obstruct or divert the natural flow of a river, stream, or lake; (2) substantially change the bed, channel, or bank of a river, stream, or lake; (3) use any material from the bed, channel, or bank of a river, stream, or lake; or (4) deposit

or dispose of debris, waste, or other material containing crumbled, flaked, or ground pavement where it may pass into a river, stream, or lake.

WHEREAS, the purpose of a lake or streambed alteration agreement is to incorporate into project activities, which are subject to Fish and Game Code section 1602, measures necessary to protect fish and wildlife resources where such activities could substantially adversely affect those resources.

WHEREAS, pursuant to sections 1602 and 1605 of the Fish and Game Code, prior to March 25, 2008, Newhall completed the "Notification of Lake or Streambed Alteration" form, paid the associated fees, and submitted the notification package and Newhall Ranch RMDP to the Department.

WHEREAS, pursuant to the Newhall Ranch RMDP, Newhall, or its transferee, will conduct activities that may substantially divert or obstruct the natural flow, or substantially change the beds, channels, or banks of the following waters within the RMDP study area in the County of Los Angeles, California:

- (a) the Santa Clara River, downstream of the proposed Commerce Center Drive Bridge to the Los Angeles County/Ventura County jurisdictional line (Santa Clara River); and
- (b) Santa Clara River tributary drainages: Chiquito Canyon, Lion Canyon, Long Canyon, Potrero Canyon, San Martinez Grande Canyon, the lower portion of Castaic Creek, Agricultural Ditch (in Landmark Village area), Ayers Canyon, Dead-End Canyon, Exxon Canyon, Homestead Canyon, Humble Canyon, Middle Canyon, Mid-Martinez Canyon, Off-Haul Canyon, Salt Canyon, Magic Mountain Canyon, Unnamed 1 Canyon (on Entrada), Unnamed 2 Canyon (on Entrada), Unnamed Canyon A (near Homestead Canyon), Unnamed Canyon B (near Long Canyon), Unnamed Canyon C (near Humble Canyon), Unnamed Canyon D (near Middle Canyon) (Tributary Drainages).

The location of the above-reach of the Santa Clara River and the Tributary Drainages are shown on Figure 24 of the Newhall Ranch RMDP (December 2007).

WHEREAS, the Newhall Ranch RMDP is a conservation, mitigation, and permitting plan for the RMDP study area, and is intended to direct both resource management and development in that area. The resource management component of the Newhall Ranch RMDP would guide future resource conservation, mitigation, and permitting needed for the long-term management of sensitive biological resources within the RMDP study area. It would be implemented in conjunction with the development plan component of the Newhall Ranch RMDP. This component consists of infrastructure in or adjacent to the Santa Clara River and the Tributary Drainages within the RMDP study area, which is needed to implement the previously-approved Specific Plan. The Newhall Ranch RMDP infrastructure is to be designed in compliance with Los Angeles County flood control requirements, Los Angeles County and Caltrans bridge and roadway requirements, utility service needs, and Los Angeles County and Los Angeles Regional Water Quality Control Board (LARWQCB) stormwater/water quality management requirements. The Newhall Ranch RMDP infrastructure is described below as "Covered Activities."

WHEREAS, this Agreement authorizes Newhall, or its transferee, to perform certain new construction, operation, and maintenance activities described in the Newhall Ranch RMDP and this Agreement, and requires Newhall, or its transferee, to comply with the Notification Procedures, Protective Measures, and Monitoring and Reporting provisions set forth in this Agreement when performing such activities to avoid or minimize substantial adverse impacts to fish and wildlife resources.

WHEREAS, authorizations under this Agreement are transferable to other persons or entities, including, but not limited to, the Los Angeles County Department of Public Works, the County of Los Angeles, water districts, water companies, sanitation districts, developers, and utilities (Operator), for all, or any portion, of the activities authorized by this Agreement, including responsibilities for compliance with the Notification Procedures, Protective Measures, and Monitoring and Reporting provisions set forth in this Agreement. Transfers will be made in writing and filed with the Department as part of the Subnotification process described herein.

WHEREAS, Newhall and Operator agree to comply with the terms and conditions of the Newhall Ranch RMDP and this Agreement.

WHEREAS, the Department biologists have inspected the RMDP study area on numerous occasions, and have determined that, absent the Protective Measures and Monitoring and Reporting provisions set forth in this Agreement, the Covered Activities specified herein may substantially adversely affect existing fish and wildlife resources, including, but not limited to, the special status wildlife and plant species and sensitive habitat/vegetation communities described in the Newhall Ranch RMDP.

WHEREAS, the Newhall Ranch RMDP component is the subject of a joint Environmental Impact Statement/Environmental Impact Report (EIS/EIR; SCH. No. 2000011025) pursuant to the National Environmental Policy Act (NEPA) and the California Environmental Quality Act (CEQA). The U.S. Army Corp of Engineers (Corps) and the Department are the lead agencies for purposes of the EIS/EIR.

WHEREAS, the Department and Newhall regard this Agreement as a Master Lake or Streambed Alteration Agreement in accordance with sections 1602 and 1605 of the Fish and Game Code for long-term resource management in compliance with the Newhall Ranch RMDP and this Agreement.

WHEREAS, the Covered Activities specified in this Agreement require other permits, agreements, and authorizations from the Department, the Corps, and U.S. Fish and Wildlife Service (USFWS). Newhall is the applicant for these other federal and state permits, agreements, and authorizations, and they include: (a) Section 404 Permit from the Corps, pursuant to the federal Clean Water Act (33 U.S.C. §§1251-1387); and (b) two Incidental Take Permits under the California Endangered Species Act (CESA; Fish and Game Code §2081, subd. (b)). Newhall acknowledges it is responsible for completing federal and state environmental review, and obtaining all necessary permits, agreements, and authorizations from the Department and other agencies before beginning any of the Covered Activities described in this Agreement.

NOW, THEREFORE, the Department and Newhall agree to the following terms and conditions set forth below.

III. ACTIVITY LOCATION

This Agreement is applicable to the Covered Activities described herein, but only in the Newhall Ranch RMDP study area location. The RMDP study area encompasses the same areas as the

boundary of the previously approved Newhall Ranch Specific Plan, except that the RMDP also includes Specific Plan-related traffic/utility infrastructure and the Salt Creek area in Ventura County, adjacent to the Specific Plan boundary. This study area is depicted on Figure 3 of the Newhall Ranch RMDP. The sensitive biological areas within the RMDP study area encompass the Specific Plan's River Corridor Special Management Area (SMA)/Significant Ecological Area 23 (SEA 23), the High Country SMA/SEA 20, the Salt Creek area, designated Open Areas, oak resources, and designated spineflower preserves.

IV. DEFINITIONS

The definitions below apply to this Agreement.

"Agreement" means this Master Streambed Alteration Agreement.

"Bank Stabilization" means the following types of bank protection described in the Newhall Ranch RMDP for both the Santa Clara River and certain identified Tributary Drainages within the RMDP study area: (a) buried soil cement; (b) ungrouted rock riprap; (c) gunite slope lining; (d) turf reinforcement mats (TRMs); and (e) associated grade stabilization structures.

"Bridges" means the two proposed bridges, Potrero Canyon Bridge and Long Canyon Road Bridge, and one previously approved bridge, Commerce Center Drive Bridge, located over the main stem of the Santa Clara River within the RMDP study area. The Commerce Center Drive Bridge was previously analyzed in the Final EIS/EIR prepared and approved by the Corps and the Department in connection with the previously adopted Natural River Management Plan (SCH No. 1997061090, August 1998).

"Day" means calendar day, unless otherwise specified.

"Drainages converted to buried storm drain" means those drainages within the RMDP site, including many of the smaller, ephemeral drainages, that would be graded as part of the grading operations required to facilitate build-out of the Newhall Ranch Specific Plan. Flows in these drainages meet the Los Angeles County flood criteria (less than 2,000 cfs) to be conveyed by storm drain. Because of the small, ephemeral nature of these drainages, the RMDP does not propose to create new drainage channels to replace these impacted drainages. Rather, the wet-

weather flows that currently occupy these drainages would be routed into the Specific Plan development's storm drain system, and would be discharged to the Santa Clara River via the proposed storm drain outlets. Such drainages are depicted on Figure 24 of the RMDP, dated December 2007.

"EIS/EIR" means the combined Environmental Impact Statement and Environmental Impact Report (SCH No. 2000011025) prepared for the Newhall Ranch RMDP and Spineflower Conservation Plan.

"Emergency Maintenance Work" means any maintenance activity authorized in the Project Approval Documents that must be initiated on an accelerated time schedule to ensure proper function or to prevent harm to the environment. This definition is intended to be broader than the term "Emergency" as defined in section 21060.3 of the Public Resources Code.

"Emergency work," as defined in Public Resources Code section 21060.3, means "[a] sudden, unexpected occurrence, involving a clear and imminent danger, demanding immediate action to prevent or mitigate loss of, or damage to, life, health, property, or essential public services," and it includes, but is not limited to, "such occurrences as fire, flood, earthquake, or other soil or geologic movements, as well as such occurrences as riot, accident, or sabotage."

"Entity" means any Person, state or local governmental or public agency, or public or private utility.

"Maintenance" means the activities described in the Storm Drain and Water Quality Feature Routine Maintenance Practices manual, which is found in Appendix A to the Newhall Ranch RMDP.

"Modified Tributary Drainages" means existing major tributary drainages within the RMDP study area (*e.g.*, Chiquito Canyon and San Martinez Grande Canyon), which would require stabilizing treatments to protect the channel and surrounding development from excessive vertical scour and lateral channel migration. The existing major tributary drainages would remain intact, but would sustain permanent and temporary impacts from construction of stabilization elements, including buried bank stabilization and grade stabilization structures. Modified Tributaries also include portions of other drainages within the RMDP study area (*e.g.*, portions

of Long, Lion, and Potrero Canyon) where stabilization of the existing drainages is not feasible and, therefore, in order to meet Los Angeles County flood protection objectives, these drainages would be graded and a new drainage would be constructed utilizing buried bank stabilization and grade stabilization structures, and would have sufficient hydrologic capacity to accommodate the Los Angeles County capital flood without the need for clearing vegetation from the drainage channels.

"Newhall Ranch Specific Plan" means the Newhall Ranch Specific Plan approved by the Los Angeles County Board of Supervisors on May 27, 2003.

"Newhall Ranch RMDP" means the Newhall Ranch Resource Management and Development Plan prepared by Dudek dated December 2007.

"Operator" means an Entity; the Los Angeles County Department of Public Works; the County of Los Angeles; water districts; water companies; sanitation districts; developers; and utilities for all, *or* any portion, of the activities authorized by this Agreement, including responsibilities for compliance with the Notification Procedures, Protective Measures, and Monitoring and Reporting provisions set forth in this Agreement.

"Person" means any person, firm, association, organization, partnership, business, trust, corporation, limited liability company, company or district.

"Project Approval Documents" means, for purposes of this Agreement, the Newhall Ranch RMDP and the two Incidental Take Permits sought by Newhall and addressed in the subject EIS/EIR.

"Preserved Drainages" means that, among the tributary drainages within the RMDP site, some are located in areas where no impacts are proposed, and are distant enough from surrounding development that bank stabilization is not required. Thus, these drainages would remain in their existing condition; and the RMDP does not propose to impact or enhance these drainages. In most situations, these drainages would be located in future open space areas and maintain their current hydrologic functions, as well as providing linkages for wildlife movement to and from the Santa Clara River. The Preserved Drainages are depicted on Figure 24 of the RMDP, dated December 2007.

"Riparian vegetation" means terrestrial vegetation that grows besides rivers, streams, and other freshwater bodies, and that depends on these water sources for soil moisture greater than would be available from local precipitation.

"Santa Clara River" means the reach of the Santa Clara River from downstream of the proposed Commerce Center Drive Bridge to the Los Angeles County/Ventura County jurisdictional line;

"Spineflower Conservation Plan" means a conservation and management plan to permanently protect and manage a system of preserves designed to maximize the long-term persistence of the San Fernando Valley spineflower (*Chorizanthe parryi* ssp. *fernandina*; spineflower or SFVS), which was prepared by Dudek.

"Subnotification Form" means the notification and project description that Newhall or Operator must submit to the Department for review and approval before it may commence any of the Covered Activities specified in this Agreement.

"Take" means hunt, pursue, catch, capture, or kill, or attempt to hunt, pursue, catch, capture, or kill.

"Tributary Drainages" means the following Santa Clara River tributary drainages: Chiquito Canyon, Lion Canyon, Long Canyon, Potrero Canyon, San Martinez Grande Canyon, the lower portion of Castaic Creek, Agricultural Ditch (in Landmark Village area), Ayers Canyon, Dead-End Canyon, Exxon Canyon, Homestead Canyon, Humble Canyon, Middle Canyon, Mid-Martinez Canyon, Off-Haul Canyon, Salt Canyon, Magic Mountain Canyon, Unnamed 1 Canyon (on Entrada), Unnamed 2 Canyon (on Entrada), Unnamed Canyon A (near Homestead Canyon), Unnamed Canyon B (near Long Canyon), Unnamed Canyon C (near Humble Canyon), and Unnamed Canyon D (near Middle Canyon), as stated in the above Recitals and illustrated on Figure 24 of the RMDP.

IV. COVERED ACTIVITIES

This Agreement covers those activities described in the Newhall Ranch RMDP that are subject to Fish and Game Code section 1600, *et seq.* (Covered Activities). A copy of the Newhall Ranch RMDP is attached herewith as **Exhibit 1**, incorporated by reference, and made a part of this

Agreement. Within the RMDP study area, the following Covered Activities are authorized to occur:

- Bridges, and/or road culverts;
- Bank Stabilization;
- Drainage facilities;
- Water quality control facilities;
- Modified Tributary Drainages;
- Preserved Drainages;
- Drainages converted to buried storm drain;
- Grade stabilization structures;
- Utility corridors;
- Utility crossings;
- Temporary haul routes for grading equipment;
- Outfall pipeline(s) from the Newhall Ranch Water Reclamation Plant (WRP) through bank stabilization to the bed of the Santa Clara River, and associated construction activities;
- Roadway improvements to SR-126;
- Roadway improvements to Magic Mountain Parkway;
- Roads/trails;
- Maintenance activities;
- Recreation facilities, including viewing platforms;
- Habitat enhancement and restoration activities;
- Stream diversions;
- Construction dewatering discharge(s);
- Removal/trimming of riparian vegetation;
- Trenching;
- Clearing and grubbing;
- Grading cut and fill;
- Sediment removal;
- Hydrostatic testing;

- Erosion control; and
- Geotechnical surveys and testing.

During the term of this Agreement, in the event that natural erosion or flooding processes cause landward erosion to the limits of the Department's jurisdiction, this Agreement authorizes Newhall or Operator to reclaim the eroded lands to the agreed upon limit of jurisdiction through filling and other earthwork activity. If Newhall or Operator elects to not reclaim such eroded lands within two years of the end of the erosion event, (or such later time if required to obtain any necessary permits) and such lands develop Fish and Game jurisdictional habitat, then the Department may exert jurisdiction. Newhall or Operator is responsible for maintaining adequate records to document any such erosion event and repair work to respond to any Department jurisdictional assertion. Such reclamation shall be subject to Subnotification and mitigation measures provided under this Agreement, except that compensatory habitat mitigation is not required. Nothing in this Agreement precludes Newhall or Operator from conducting Emergency Work, as defined in this Agreement.

Newhall or Operator may impact a maximum of 00.00 acres of jurisdictional wetlands habitat including 00.00 acres of riverbed and 00.0 acres of transitional riparian habitat in or adjacent to the Santa Clara River and the Tributary Drainages within the RMDP study area.

VI. NOTIFICATION PROCEDURES

A. General

Prior to initiating any Covered Activities under this Agreement and the Newhall Ranch RMDP, notification shall be given by Newhall or Operator to the Department through the use of a Subnotification Form. The Subnotification shall describe the project category or work type as either: Verification/Consistency Review, Variance Approval Review, Amendment Review, or Maintenance Notification. The Subnotification also shall be used for transfers of authority for Covered Activities permitted by this Agreement from Newhall to Operator(s).

If greater than 50 percent of Newhall is sold, merged, or consolidated, or otherwise acquired by another company or entity, Newhall shall give the Department written notice of any new organizational structure as soon as practical after such sale, merger, consolidation, or acquisition.

B. Content of the Subnotification

Prior to initiating any Covered Activities as identified in this Agreement and the Newhall Ranch RMDP, Newhall or Operator shall submit a Subnotification in the same form as **Exhibit 2**, which is attached hereto, incorporated by reference, and made a part of this Agreement. Information required for a complete Subnotification Form shall include, as appropriate, a description of the Newhall Ranch RMDP project by name; the applicant/property owner contact information; project location; the project category or work type; and the project description, impacts, financial security, associated permit(s), and environmental review information specified on the Subnotification Form (**Exhibit 2**).

As appropriate, information regarding the need for stream diversions and dewatering plans also shall be included. These plans shall include species protection, exclusion, and relocation plan elements to demonstrate protection of resources. Each Subnotification shall include a statement on the consistency of the proposed project with the Newhall Ranch RMDP, EIS/EIR, and this Agreement. This statement, which has been incorporated into the Subnotification Form (**Exhibit 2**), includes a statement of compliance with environmental protection measures for threatened and endangered species, water quality, and riparian habitat.

Newhall or Operator shall submit a cost estimate for performance and monitoring of compensatory mitigation measures, and a financial security in a form approved by the Department's Legal Affairs Division.

C. Agency Review

The Department shall review each completed Subnotification Form, along with the plans and mitigation information, for consistency with the Newhall Ranch RMDP, EIS/EIR, 2081 Permits, and this Agreement (Project Approval Documents). The Department shall make the following concurrence determinations: (1) conformance of the project (or maintenance activity) with the Project Approval Documents; and (2) availability of sufficient compensatory mitigation.

The Department will deny authorization if the Department determines: (1) the project is inconsistent with the Project Approval Documents; (2) the submitted Subnotification Form does not include sufficient information, plans, or maps to determine that the project is consistent with the Project Approval Documents; or (3) the proposed compensatory mitigation is insufficient

(either inadequate mitigation credits, or insufficient creation, restoration, revegetation, or weeding plan proposal) to comply with the approved mitigation. The Department shall provide specific reasons for the denial. In the event of a denial, the Department and Newhall or Operator may follow the dispute resolution procedures set forth in this Agreement to resolve the inconsistency/insufficiency, or Newhall or Operator may submit a revised Subnotification Form, or otherwise modify the project features, to show consistency with the Project Approval Documents.

D. Department Response to Subnotification

1. Completeness Determination

The Department shall notify Newhall or Operator, via either letter or email (see Notifications Section VI, F.2. below), within 5 business days of receiving a Subnotification of the Department's completeness determination. A Subnotification shall be complete if it contains the relevant information described on the Subnotification Form (**Exhibit 2**) and as detailed on the Subnotification Completeness Checklist, which is attached hereto as **Exhibit 3**, incorporated by reference, and made a part of this Agreement. The Department shall either provide a notice of completeness, or in the event of an incompleteness determination, the Department shall provide a detailed list of additional information needed to make the submittal complete. The review period described below will begin after the Department deems the submittal complete. If the Department does not respond within the 5 business day time period described above, the Subnotification shall be automatically deemed complete at that time, and the review period described below will begin.

2. Department Technical Review Period

After the Subnotification is deemed complete, the Department shall review it for consistency with the Project Approval Documents in accordance with the time periods and procedures described below.

- a. **New construction activities:** The Department shall make the consistency determination no more than 30 business days from the date that the Subnotification is

deemed complete.

- b. **Routine maintenance:** The Department shall make the consistency determination no more than 20 business days from the date the Subnotification is deemed complete.
- c. **Emergency maintenance work:** The Department shall make the consistency determination no more than 5 business days from the date the Subnotification is deemed complete.

3. Determination

a. Concurrence

The Department shall notify Newhall or Operator by letter or email that the project is consistent with the Project Approval Documents in accordance with the notification procedures in Section VI, F.2. below of this Agreement.

b. Non-Concurrence

If the Department determines that a project is not consistent with the Project Approval Documents, then the Department shall so notify Newhall or Operator by letter or email pursuant to the notification procedures in Section VI, F.2. below of the Agreement. The Department shall provide Newhall or Operator with the basis for its non-concurrence decision. A non-concurrence decision may be based on the following: (1) a project being modified beyond the approved limits of the Newhall Ranch RMDP (**Exhibit 1**); or (2) project plans lack specific applicable, previously approved measures to ensure protection of sensitive species, water quality, or riparian habitat.

4. Agreement Amendment

a. Minor and Major Amendments

In the event of a determination of non-concurrence, Newhall or Operator may then resubmit a revised Subnotification with additional information and/or corrections to respond to the Department's basis for denial. Alternatively, the Operator may initially

or in response submit a request for a Minor or Major Agreement Amendment. A Minor Amendment may be for such things as: (1) less than significant changes to project limits; (2) slightly modified mitigation measures that provide equivalent environmental protection; or (3) unique project features or innovations in design not contemplated in the RMDP, but consistent with the natural river concepts of the Newhall Ranch RMDP and this Agreement. A Major Amendment may be for things such as: (1) completion of a project significantly larger in scope or impact than contemplated in the Newhall Ranch RMDP; (2) request for a project not contemplated in the Newhall Ranch RMDP; (3) new mitigation measures or proposed substantial modifications to existing measures; or (4) proposed alternative compensatory mitigation.

An Amendment request shall include the following information: (1) any new environmental impacts and their significance associated with the modification; (2) any changes in the overall environmental impacts of the Newhall Ranch RMDP due to the modification of an individual project; and (3) conformance with the environmental protection elements, mitigation measures, and conditions set forth in the Newhall Ranch RMDP and this Agreement.

b. Additional CEQA Considerations

The Department may approve the Minor or Major Amendment without further CEQA compliance unless the Minor or Major Amendment would result in additional substantial adverse effects or a substantial increase in the severity of previously identified significant effects on fish and wildlife resources beyond those mitigated by the Project Approval Documents. (CEQA Guidelines, §15162.) For purposes of this section, a project will have an additional substantial adverse effect on fish and wildlife resources if the project as revised does not meet the standards in sections 2081(b) and (c) for issuance of a Section 2081(b) Permit, or if it otherwise has an additional substantial adverse effect on fish and wildlife resources. If the Department determines that the project would have additional substantial adverse effects on fish and wildlife resources then additional CEQA compliance would need to be determined, pursuant to CEQA Guidelines sections 15162 to 15164.

c. Additional Agreement Conditions and RMDP Revisions

Processing of an Amendment may result in additional conditions, mitigation measures, or modification of the Newhall Ranch RMDP to provide for mitigation of any additional significant impacts.

d. Review of Amendment

The Department shall review the Amendment and make the same determinations described in Section VI.D.3., above, while also considering the information required in Section VI.D.4.a, above. The completeness and review periods described in Sections VI.D.1 and VI.D.2 above shall be doubled for Amendments (i.e., be 10 and 60 days). The Department shall either: (1) deem the project mitigation measures adequate and consistent with the Project Approval documents; (2) condition the consistency determination with additional mitigation measures; or (3) require additional CEQA evaluation and, as appropriate, make a determination of consistency, including any additional mitigation measures required by the additional CEQA evaluation. If additional CEQA evaluation is required pursuant to Section VI.D.4.b, the review period for the Amendment shall be extended to incorporate any public review that may be required under CEQA. If the Amendment is denied, the Department shall provide specific reasons for the denial. Upon denial, nothing precludes Newhall or Operator from notifying the Department of the activity in accordance with the provisions of Fish and Game Code section 1600 *et seq.* and pursuing a separate Lake or Streambed Alteration Agreement for such activity.

5. No Response

If the Department fails to respond within the time period(s) described above, Newhall or Operator may begin the activity described in the Subnotification after the review period has expired, provided that Newhall or Operator complies with the protective measures described in the Project Approval Documents, in completing the project.

This “no response approach” shall be confirmed in writing by Newhall or Operator and submitted to the Department prior to the start of work as a component of the five-day pre-construction notification. Exercise of this option is at the discretion of

Newhall or Operator and does not obviate any other responsibilities or requirements of the Newhall Ranch RMDP, this Agreement, or the associated permits, conditions, or mitigation measures.


E. Department Inspection

The Department shall contact Newhall or Operator prior to conducting pre-project inspections and site compliance monitoring.

F. Contact Information

All notices and requests under this Agreement shall be in writing and sent by e-mail or letter (by overnight mail, next business day delivery), as follows:

1. Notification to the Department shall be sent to:

California Department of Fish and Game
4949 Viewridge Avenue
San Diego, California 92123-1662
Attn: Environmental Services
E-mail: 
Re: Newhall Ranch RMDP (specify project Subnotification #)

2. Notification to Newhall or Operator shall be sent to:

The Newhall Land and Farming Company
23823 Valencia Boulevard
Valencia, California 91355
Attn: Vice-President Operations
E-mail: bcrable@newhall.com
Re: Newhall Ranch RMDP MSAA #1600-2004-0016-R4-

All such notices or requests shall be effective upon the earlier of actual receipt, or twenty-four (24) hours after the e-mail was sent, or after deposit with the overnight mail carrier. The Department or Newhall/Operator may change its address or designate a new street address or e-mail for notices under this Agreement by notice complying with the terms of this section.

VII. PROTECTIVE MEASURES

- A. The Covered Activities identified in the Newhall Ranch RMDP, or as authorized by this Agreement or Amendment, shall incorporate a natural river management concept. The engineering design for such concept is based primarily on vegetated channels in the River mainstem and larger tributaries, which avoid the need for routine flood control maintenance. Approved Los Angeles County Department of Public Works maintenance activities are included as Appendices to the Newhall Ranch RMDP.
- B. The Newhall Ranch RMDP incorporates comprehensive mitigation measures for all activities described under this Agreement. As described in Section VI.B., Content of the Subnotification, above, a comprehensive summary is required to be submitted to the Department describing project compliance with applicable mitigation measures.
- C. A conservation easement shall be recorded on Newhall's ownership in phases over approximately 977 acres of the Santa Clara River from the confluence of Castaic Creek and the Santa Clara River to the Los Angeles County/Ventura County line (hereinafter referred to as Conservation Easement Area) and along several main Tributaries (Salt Creek, Castaic Creek), to protect existing plant, fish and wildlife resources in perpetuity. The Conservation Easement shall be recorded in phases with the River Corridor SMA last, but with the entire Conservation Easement Area offered no later than January 1, 2040.
 1. Prior to recording the Conservation Easement, Newhall may subdivide and/or sell portions of its property outside of the Conservation Easement Area without notice to, or consent of, the Department. Newhall shall not sell any portions of its property within the Conservation Easement Area without first reserving a conservation easement, as required by the Newhall Ranch RMDP, on the portion of the subject property covered by the Newhall Ranch RMDP, which conservation easement will specifically allow implementation of the projects authorized under the Newhall Ranch RMDP.

2. The Conservation Easement shall be recorded in favor of an agent or entity approved by Newhall and the Department. This Conservation Easement shall not preclude Newhall from issuing other conservation easements and/or dedications as required by the Newhall Ranch Specific Plan's Resource Management Plan provisions. All such conservation easements will be consistent in their provisions.
 3. A conservation easement over any remaining Newhall fee title property in the subject Conservation Easement Area may be recorded before or after construction activities are completed, at the discretion of Newhall, to a third party agent or entity approved by the Department.
 4. A series of easements, or one comprehensive easement, may be recorded if deemed appropriate by Newhall, but the Conservation Easement(s) shall be transferred to an agent or entity approved by the Department. The form and content of the Conservation Easement(s) shall be approved by the Department's Legal Affairs Division prior to their execution.
- D. Disturbance or removal of vegetation shall not exceed the lesser of the limits approved by the Department by this Agreement and the Newhall Ranch RMDP, or the detailed construction plans, except as otherwise authorized pursuant to this Agreement.
- E. Newhall or Operator shall notify the Department, in writing, at least five (5) days prior to initiation of construction (project) activities and at least five (5) days prior to the completion of construction (project) activities. Newhall or Operator shall follow the notification procedures set forth in Section VI.F. of this Agreement.
- F. The Department's specified fisheries biologist shall be contacted via telephone or email prior to any work within flowing or ponded water and prior to any surface water diversions or initiation of dewatering activities. The Department's specified fisheries biologist is currently Maurice Cardenas at telephone (805) 640-1852, email mcardenas@cfg.ca.gov. The Department may change their specified fisheries biologist upon written notice under section VI.F. above.

- G. Copies of this Agreement, all associated permits, and supporting documents, provided with the Subnotification required by this Agreement, shall be readily available at work sites at all times during periods of active work, and shall be presented to any Department personnel, or personnel from another authorizing agency, upon demand. All Contractors shall read and become familiar with the contents of this Agreement. Specific sections of the mitigation measures applicable to routine construction activities shall be incorporated into pre-construction training of construction personnel on the project site.

VIII. MONITORING AND REPORTING

A. Annual Report

1. On or before April 1 of each year, an annual report (Annual Report Outline) shall be submitted by Newhall or Operator detailing the following:
 - a. Results of all pre-construction special status species survey and relocation efforts during the prior year shall be summarized and submitted in tabular form, with figures indicating survey limits, sensitive species discovered, and location of deposition of recovered plant and animal species. This Pre-Construction Survey Checklist shall be in the form provided in **Exhibit 4**, which is attached hereto, incorporated by reference, and made a part of this Agreement.
 - b. Results of parasitic animal species control from the prior year shall be summarized and submitted in tabular form, with figures indicating locations of control efforts.
 - c. Newhall or Operator shall file a Mitigation Accounting Form annually. The Mitigation Account Form shall be in the form provided in **Exhibit 5**, which is attached hereto, incorporated by reference, and made a part of this Agreement, and shall document the amount of vegetation planted during the past year, any "in-lieu fees" paid for exotic invasive plant species control, the status of all mitigation credits to date, and any credits subtracted by projects implemented during the past year.
 - d. Candidate restoration sites shall be selected by Newhall and described in the Annual Report Outline, which shall be in the form provided in **Exhibit 6**, attached hereto, incorporated by reference, and made a part of this Agreement.

- e. The Annual Report Outline shall include any required plans for plant spacing, locations of candidate restoration and weed control sites, or proposed "in-lieu fees," restoration methods, and vegetation community restoration performance standards.
- f. For active vegetation community creation sites, the Annual Report Outline shall include the survival, percent cover, and height of planted species, the number by species of plants replaced, an overview of the revegetation effort and its success in meeting performance criteria, the method used to assess these parameters, and photographs.
- g. For active exotics control sites, the Annual Report Outline shall include an assessment of weed removal; a description of the relative cover of native vegetation, bare areas, and exotic vegetation; colonization by native plants; and photographs.

B. Four-Year Review Report

1. Schedule

Newhall or Operator shall provide a status report to the Department every four years from the date of Department's signature on this Agreement. The status report shall be delivered to the Department no later than 90 days prior to the end of each four-year period.

2. Report Contents

- a. A copy of this original Agreement;
- b. The status of the activity covered by this Agreement;
- c. An evaluation of the success or failure of the measures in the Agreement to protect the fish and wildlife resources that the activity may substantially adversely affect; and
- d. A discussion of any factors that could increase the predicted adverse impacts on fish and wildlife resources, and a description of the resources that may be adversely affected.

3. Department Review

The Department shall review the four-year status report, and conduct an onsite inspection to confirm that Newhall or Operator is in compliance with the Agreement and that the measures in the Agreement continue to protect the fish and wildlife resources. If the Department determines that the measures in the Agreement no longer protect the fish and wildlife resources that are being substantially adversely affected by the Covered Activities, the Department, in consultation with Newhall or Operator, and within 45 days of receipt of the report, shall impose one or more new measures to protect the fish and wildlife resources affected by the activity. If requested to do so by Newhall or Operator, the Department shall make available the information upon which it determined the Agreement no longer protects the affected fish and wildlife resources.

- a. **Issues Resolution:** If Newhall or Operator disagree with one or more of the new measures, within seven days of receiving the new measures, it shall notify the Department, in writing, of the disagreement. Newhall or Operator and the Department shall consult regarding the disagreement within seven days of the Department receiving the notice. The dispute resolution process described below shall be instituted should any disagreement not be resolved.

4. Timely Reports

If Newhall or Operator fails to provide timely status reports as required by section 1605 of the Fish and Game Code, the Department may suspend or revoke the Agreement.

IX. COMPLIANCE WITH AGREEMENT AND DISPUTE RESOLUTION

A. Notice of Non-Compliance

In the event that an individual project is alleged by the Department to be conducted or constructed in violation of any portion of this Agreement, the work for that individual project shall cease upon written notice by the Department to Newhall or Operator until the matter is resolved.

If Newhall or Operator's work changes for an individual project from that stated in this Agreement, this Agreement is no longer valid as it relates to that individual project and the Amendment process shall be initiated or a new notification shall be submitted to the Department if that individual project is to be pursued. Failure to comply with the provisions of this Agreement may result in prosecution, in addition to the dispute resolution provisions set forth in Section IX.B. below.

B. Dispute Resolution

If Newhall or Operator disagree with the Department's determination under Section VI.C, VIII.B.3 or IX.A, the local field staff for the Department and Newhall or Operator shall attempt to resolve the issue within fourteen (14) days of the Department's original notice to Newhall or Operator. If the issue is not resolved within 14 days of the original notice, the issue shall be elevated to the Department's Regional Manager and Newhall or Operator's Vice-President or President who shall attempt to resolve the issue within 21 days of such elevation. If the issue is still not resolved, the disagreement will be elevated to the Department's Director and General Counsel and Newhall or Operator's President who shall attempt to resolve the issue within 21 days of this second elevation. If the issue is not resolved by Newhall or Operator and the Department, and the issue is triggered by Section VIII.B.3 above, then Newhall or Operator may request, in writing, the appointment of a panel of arbitrators to resolve the disagreement pursuant to the procedures set forth in Fish and Game Code section 1605, subd. (g). The panel of arbitrators shall be appointed within 14 days of the completed consultation set forth above in this section. The panel of arbitrators shall issue a decision within 14 days of the date it is established. All other provisions of subdivision (b) of section 1603 regarding the panel shall apply to any arbitration panel established in accordance with section 1605 of the Fish and Game Code.

C. Mitigation Responsibility

In the event that any authority under this Agreement is transferred or assigned to an Operator for activities conducted and mitigation required under this Agreement, Newhall shall have no liability for the actions of such persons or entities or for the failure of such persons, entities, agencies, and utilities to comply with the terms of this Agreement.

X. FEES

The fees below are based on the current Lake and Streambed Alteration Program fee schedule in California Code of Regulations, title 14, section 699.5. Newhall shall pay the appropriate fee from the existing fee schedule at the time the specific fee is paid.

A. Base Fee

Newhall shall pay a non-discretionary base fee of \$30,000.

B. Subsequent Fees

1. The annual discretionary fee of \$2,500 shall be waived because Newhall has funded a dedicated position through the Department and this position is responsible for managing this Agreement.
2. Newhall or Operator shall also pay \$250 per Subnotification submittal to the Department at the time of filing the form.

C. Amendments

1. Minor amendments

Operator shall submit a fee of \$150 with any request for a minor amendment. See Section VI.D.4 above for a definition of minor versus major amendments.

2. Major amendments

Operator shall submit a fee of \$500 with any request for a major amendment.

These represent fees for this Agreement and subsequent Subnotifications (both Construction and Maintenance), and do not represent the Department's reasonable costs for any actions taken by the Department as lead agency to comply with CEQA. Such reasonable CEQA costs shall be paid to the Department in accordance with CEQA (Public Resources Code §21089(a)) within 60 days of the Department's written request for such costs.

XI. COMPLIANCE WITH OTHER LAWS AND PERMITS

Nothing in this Agreement authorizes Newhall or Operator to trespass on any land or property, nor does it relieve Newhall or Operator of responsibility for compliance with applicable federal, state, or local laws or ordinances. A consummated Agreement does not constitute Department of

Fish and Game endorsement of the proposed operation, or assure the Department's concurrence with permits required from other agencies.

To the extent that the provisions of this Agreement provide for activities that are subject to the authority of other public agencies, it is the Department's understanding that all appropriate permits and authorizations will be obtained prior to commencing the activities. The Department will provide independent review and recommendations, as appropriate, on those projects where local, state, or federal permits/authorizations or other environmental review are required. This Agreement does not authorize the take of any currently listed state or federal threatened or endangered species, or state fully protected species. The Incidental Take Permit, No. 2081-XXXX-XX (2081(b) Permit), and the U.S. Fish and Wildlife Service Section 7 Biological Opinion, which are issued for the same project covered by this Agreement, do permit the incidental take of state and federally listed species to the extent authorized by law.

It is understood that the Department enters into this Agreement for purposes of avoiding or mitigating potential substantial adverse effects to fish and wildlife resources in the event that an activity or project is implemented. The decision to proceed with an activity or project is the sole responsibility of Newhall or Operator and is not required by this Agreement. It is agreed that all liability and/or costs incurred related to or arising out of Newhall or Operator's activity or project and the mitigation measures for the protection of fish and wildlife set forth in this Agreement remain the sole responsibility of Newhall or Operator. Newhall or Operator agrees to hold harmless and indemnify the State of California and the Department against any claim relative to this Agreement made by any person for personal injury or property damage resulting from Newhall or Operator's intentional misconduct or negligence. Nothing in this section is intended to prohibit Newhall or Operator, or any other person or entity, from requesting and/or receiving assistance or funding from the Federal Emergency Management Agency.

Should any portion of this Agreement be determined to be void or unenforceable, such portion shall be severed from the whole and the remaining portions of the Agreement shall remain in force and effect.

XII. AMENDMENT

This Agreement constitutes the entire agreement, written, oral, and implied, between Newhall or Operator and the Department regarding the implementation of the Newhall Ranch RMDP, which is the subject of this Agreement, and it supersedes and replaces all prior negotiations, proposed agreements, and agreements, written, oral and implied, regarding the Newhall Ranch RMDP. It is expressly understood and agreed that this Agreement may not be amended or modified in any respect, except in writing, duly executed by Newhall or Operator and the Department. Nothing in this section is intended to affect the validity and the legal effect of the Section 2081(b) Permits issued by the Department.

XIV. TERM

This Agreement becomes effective on the date of the Department's signature for a construction buildout period of 30 years pursuant to Fish & Game Code section 1605, subd. (g). The construction portion terminates on December 31, 2040; however, this Agreement shall remain in effect to satisfy the mitigation/maintenance terms/conditions of this Agreement. The maintenance portion of this Agreement shall extend for a total of 60 years from the effective date of this Agreement.

XV. EXHIBITS

The Exhibits referenced in this Agreement are identified below, attached hereto, incorporated by reference, and made a part of this Agreement.

1. Newhall Ranch RMDP;
2. Subnotification Form;
3. Subnotification Completeness Checklist;
4. Pre-Construction Survey Checklist;
5. Mitigation Accounting Form;
6. Annual Report Outline;
7. RMDP Components Impact Graphics; and
8. RMDP Components Impact Tables.

CONCURRENCE

The Newhall Land and Farming Company
(a California limited partnership)

Steven D. Zimmer	Date
Executive Vice President	

California Department of Fish and Game

Edmund Pert	Date
Regional Manager	
South Coast Region	

FOR DEPARTMENT USE ONLY				
Date Received	Amount Received	Amount Due	Date Complete	Subnotification No.
	\$	\$250 – New Construction \$100 – Maintenance \$2,500 – Annual Fee		1600-2004-0016-R5-

**STATE OF CALIFORNIA
DEPARTMENT OF FISH AND GAME
SUBNOTIFICATION OF LAKE OR STREAMBED ALTERATION**

This Subnotification form is being submitted in accordance with the State of California Department of Fish and Game Master Streambed Alteration Agreement Number **1600-2004-0016-R5** for the Newhall Land Resource Management and Development Plan, which states that prior to initiating any activities under the Agreement, notification to the Department shall be given on an individual project basis through the use of a Subnotification Form. The Subnotification is to describe the project review as either: **Verification/Consistency Review, Variance Approval Review, or Amendment Processing**. Any notification of transfers of authority for specific activities permitted by this Agreement from Newhall Land to other persons, private entities, state or local governmental agencies, or public utilities shall be included on the Subnotification Form, as appropriate.

Use of this Subnotification Form requires that the proposed project be located within the Newhall Land Resource Management and Development Plan study area, which describes a series of individual flood control, bank stabilization, bridge construction, storm drain outlet & inlet structures, and utility crossing projects along the Santa Clara River watershed west of Castaic Creek Confluence to the Ventura County Line (Excluding Portions of the River previously covered by the 1998 Valencia Company Natural River Management Plan (NRMP)), and along the lower portion of Castaic Creek in Los Angeles County, California. The boundary of the RMDP is consistent with the Newhall Ranch Specific Plan area.

RMDP PROJECT CODING & NAME: _____

1. APPLICANT PROPOSING PROJECT

Name				
Business/Agency				
Street Address				
City, State, Zip				
Telephone		<input type="checkbox"/> x	Fax:	Email

2. CONTACT PERSON *(Complete only if different from applicant)*

Name				
Business/Agency				
Street Address				
City, State, Zip				
Telephone		<input type="checkbox"/> x	Fax:	Email

3. PROPERTY OWNER *(Complete only if different from applicant)*

Name				
Business/Agency				
Street Address				
City, State, Zip				
Telephone		<input type="checkbox"/> x	Fax:	Email

4. PROJECT LOCATION

A. Description of project location

SUBNOTIFICATION OF LAKE OR STREAMBED ALTERATION

Located on Newhall Ranch, west of Interstate 5, **North or South** of Hwy 126, in unincorporated Los Angeles County, California.

B. Tributary affected by the project	<input type="checkbox"/> Chiquito <input type="checkbox"/> Long <input type="checkbox"/> Lion <input type="checkbox"/> Middle <input type="checkbox"/> Magic <input type="checkbox"/> Potrero <input type="checkbox"/> San Martinez <input type="checkbox"/> Other: _____	C. What water body is the river, stream, or lake tributary to:	Santa Clara River, Pacific Ocean
E. County	Los Angeles	F. USGS 7.5 Minute Quad Map (check one)	<input type="checkbox"/> Newhall <input type="checkbox"/> Val Verde
G. Meridian	<input checked="" type="checkbox"/> San Bernardino	H. Assessor's Parcel Number(s):	Township <input checked="" type="checkbox"/> 4N Range <input type="checkbox"/> 16W <input type="checkbox"/> 17W
I. Coordinates (if available, provide at least latitude/longitude or UTM coordinates and check appropriate boxes)			
Latitude/Longitude	<i>Latitude:</i> _____		<i>Longitude:</i> _____
	<input checked="" type="checkbox"/> Degrees/Minutes/Seconds	Datum used:	<input checked="" type="checkbox"/> NAD 83 or WGS 84

5. PROJECT CATEGORY AND WORK TYPE (Check each box that applies)

<input type="checkbox"/> Verification / Consistency Review	<input type="checkbox"/> Variance Approval Review	<input type="checkbox"/> Amendment Review	<input type="checkbox"/> Maintenance Notification
---	--	--	--

PROJECT CATEGORY CONSTRUCTION	RMDP Project Section	NEW CONSTRUCTION	REPLACE EXISTING STRUCTURE	REPAIR/MAINTAIN EXISTING STRUCTURE
Bank stabilization – TRM/Buried Riprap/Bioengineering	6.0 6.1.1 6.2 Table 5	<input type="checkbox"/>	<input type="checkbox"/>	
Bank stabilization Rip-rap temporary (vegetated) Rip-rap permanent	6.0 6.1.1 6.2 Table 5	<input type="checkbox"/> <input type="checkbox"/>	<input type="checkbox"/> <input type="checkbox"/>	<input type="checkbox"/>
Bank stabilization – Gunite / grouted riprap/concrete	6.0 6.1.1 6.2 Table 5	<input type="checkbox"/>	<input type="checkbox"/>	<input type="checkbox"/>
Bridge	6.0 6.1.2 6.2.3 Table 5 & 6	<input type="checkbox"/>	<input type="checkbox"/>	<input type="checkbox"/>
Culvert, Piping or Converting to Buried Storm Drain	6.0 6.2 6.2.4 Table 5	<input type="checkbox"/>		
Debris basin	6.0 6.2.6	<input type="checkbox"/>	<input type="checkbox"/>	<input type="checkbox"/>
Diversion structure – Temp Channel / Cofferdam	NA	<input type="checkbox"/>		
Road or Trail (non-armored facilities)	6.0 6.1.4 6.3.2	<input type="checkbox"/>		<input type="checkbox"/>
Storm drain outfall structure	6.0 6.1.6 6.3.1	<input type="checkbox"/>	<input type="checkbox"/>	<input type="checkbox"/>
Temporary Stream Crossing / Haul Route	6.0 6.1.3	<input type="checkbox"/>		
Utility crossing Horizontal Directional Drilling Jack & bore (w/ microtunneling) Open trench Overhead / Suspended	6.0 6.2.5	<input type="checkbox"/> <input type="checkbox"/> <input type="checkbox"/> <input type="checkbox"/>	<input type="checkbox"/> <input type="checkbox"/>	<input type="checkbox"/> <input type="checkbox"/>

SUBNOTIFICATION OF LAKE OR STREAMBED ALTERATION

PROJECT CATEGORY - MITIGATION / MISC		NEW CONSTRUCTION	REPLACE EXISTING STRUCTURE	REPAIR/MAINTAIN EXISTING STRUCTURE
Emergency Notification	6.0 6.4 9.1		<input type="checkbox"/>	<input type="checkbox"/>
Geotechnical survey	6.0 6.3.3	<input type="checkbox"/>		
Habitat enhancement – revegetation / mitigation / Invasive Species Control	7.0 8.0 9.0	<input type="checkbox"/>		
Other (<i>specify</i>) _____	_____	<input type="checkbox"/>	<input type="checkbox"/>	<input type="checkbox"/>

6. PROJECT DESCRIPTION

A. Construction Project - Attached Documents:

Project Description
 Bio. Report
 Veg/Land Use Maps
 Aerial Photo w/Project Overlay
 Ground Level Photos
 Tree Inventory
 RMDP Components Reference Figure(s)
 Diversion / Dewatering Plan
 Species Relocation Plan
 SWPPP
 11"x17" Project Plan Set
 Mitigation Cost Estimate & Security
 Post-Construction Flood Control Structures Maintenance Plan
 Mitigation Plan

Enclose diagrams, drawings, plans, and/or maps that provide all of the following: site specific construction details; the dimensions of each structure and/or extent of each activity in the bed, channel, bank or floodplain (permanent and temporary impacts depicted separately); an overview of the entire project area (i.e., "bird's-eye view") showing the location of each structure and/or activity significant area features, and where the equipment/machinery will enter and exit the project area. Provide project description adequate to characterize the construction activities to occur, duration and timing of pertinent phases of construction (ie. clearing, excavation in jurisdictional areas, work hours, work season – bird nesting, storm). The Bio. Report shall include descriptions of existing vegetative communities, habitats and species that may be impacted by the project activities (temporary and permanent impacts by habitat type).

B. Maintenance Activity – Is this a Maintenance Activity pursuant to the RMDP Storm Drain & Water Quality Feature Routine Maintenance Practices manual?

Yes (*See below*)
 No (*Skip to C*)

At a minimum, the submittal will include: a map showing the limits of maintenance area with current vegetation and proposed impacts; location and details of any required stream diversions; species protection / relocation plans and any pertinent additional environmental protections measures; description of maintenance activities and schedule; and description of post-maintenance restoration efforts, if any.

<p>B1. Will Maintenance Activity comply with, and be consistent with, the General Measures? (check all that apply)</p> <p> <input type="checkbox"/> Access, Work Zone Restrictions & Monitoring <input type="checkbox"/> Sensitive Aquatic Species Avoidance/Mitigation <input type="checkbox"/> Sensitive Bird Species Avoidance/Mitigation <input type="checkbox"/> Sensitive Mammal & Reptile Species Avoidance/Mitigation <input type="checkbox"/> Invasive Species Control <input type="checkbox"/> Notification & Reporting </p>	<p> <input type="checkbox"/> Yes <input type="checkbox"/> Yes <input type="checkbox"/> Yes <input type="checkbox"/> Yes <input type="checkbox"/> Yes <input type="checkbox"/> Yes </p>	<p> <input type="checkbox"/> No <input type="checkbox"/> No <input type="checkbox"/> No <input type="checkbox"/> No <input type="checkbox"/> No <input type="checkbox"/> No </p>	<p>Provide justification for measures that do not apply and include an explanation of why measures will not be complied with, and submit proposed mitigation measures that are different than the maintenance manual.</p>
--	---	---	---

SUBNOTIFICATION OF LAKE OR STREAMBED ALTERATION

<p>B2. Maintenance Activity will comply with, and be consistent with, <i>Feature Specific Measures</i>? (check all that apply)</p> <p><input type="checkbox"/> Channel Clearing Near Bridges</p> <p><input type="checkbox"/> Removal of Vegetation From Rip-Rap</p> <p><input type="checkbox"/> Cleaning Storm Drain Outfalls</p> <p><input type="checkbox"/> Bridge Repair</p> <p><input type="checkbox"/> Repairs to Bank Protection</p> <p><input type="checkbox"/> Water Quality Treatment & Flow Attenuation Facilities</p> <p style="padding-left: 20px;"><input type="checkbox"/> Extended Detention Basin</p> <p style="padding-left: 20px;"><input type="checkbox"/> Vegetated Swales</p> <p style="padding-left: 20px;"><input type="checkbox"/> Infiltration Facilities</p> <p style="padding-left: 20px;"><input type="checkbox"/> Wetponds</p> <p style="padding-left: 20px;"><input type="checkbox"/> Stormwater Wetland Basins</p> <p><input type="checkbox"/> Restored Tributaries</p> <p style="padding-left: 20px;"><input type="checkbox"/> Culverts / Low Bridge</p> <p style="padding-left: 20px;"><input type="checkbox"/> Grade Control Structures</p> <p style="padding-left: 20px;"><input type="checkbox"/> Drop Structures</p>	<p><input type="checkbox"/> Yes</p> <p><input type="checkbox"/> Yes</p> <p><input type="checkbox"/> Yes</p> <p><input type="checkbox"/> Yes</p> <p><input type="checkbox"/> Yes</p> <p><input type="checkbox"/> Yes</p> <p><input type="checkbox"/> Yes</p> <p><input type="checkbox"/> Yes</p> <p><input type="checkbox"/> Yes</p> <p><input type="checkbox"/> Yes</p> <p><input type="checkbox"/> Yes</p> <p><input type="checkbox"/> Yes</p> <p><input type="checkbox"/> Yes</p> <p><input type="checkbox"/> Yes</p> <p><input type="checkbox"/> Yes</p> <p><input type="checkbox"/> Yes</p> <p><input type="checkbox"/> Yes</p> <p><input type="checkbox"/> Yes</p> <p><input type="checkbox"/> Yes</p> <p><input type="checkbox"/> Yes</p> <p><input type="checkbox"/> Yes</p> <p><input type="checkbox"/> Yes</p>	<p><input type="checkbox"/> No</p> <p><input type="checkbox"/> No</p> <p><input type="checkbox"/> No</p> <p><input type="checkbox"/> No</p> <p><input type="checkbox"/> No</p> <p><input type="checkbox"/> No</p> <p><input type="checkbox"/> No</p> <p><input type="checkbox"/> No</p> <p><input type="checkbox"/> No</p> <p><input type="checkbox"/> No</p> <p><input type="checkbox"/> No</p> <p><input type="checkbox"/> No</p> <p><input type="checkbox"/> No</p> <p><input type="checkbox"/> No</p> <p><input type="checkbox"/> No</p> <p><input type="checkbox"/> No</p> <p><input type="checkbox"/> No</p> <p><input type="checkbox"/> No</p> <p><input type="checkbox"/> No</p> <p><input type="checkbox"/> No</p> <p><input type="checkbox"/> No</p> <p><input type="checkbox"/> No</p> <p><input type="checkbox"/> No</p>	<p>For those activities checked as applicable but for which the Operator does not believe the activities will be consistent with the maintenance manual, include an explanation of why and include the Operators proposed mitigation measures that differ from the maintenance manual.</p> <p>Note that it is expected that a detailed maintenance program will be developed for certain Water Quality Filters and Wetland Features. If applicable, attach the appropriate maintenance plan to the Notification.</p>																		
<p>B3. For all routine maintenance projects, specify heavy equipment to be used:</p>	<p>1. _____</p> <p>2. _____</p> <p>3. _____</p> <p>4. _____</p> <p>5. _____</p>																				
<p>C. Will activity involve any diversion, obstruction, extraction, or impoundment of the natural flow of a river, stream, or lake?</p>	<p><input type="checkbox"/> Yes (Include Diversion Plan with elements described below)</p>		<p><input type="checkbox"/> No (Skip to D)</p>																		
<p>C1. If a diversion, obstruction, extraction, or impoundment of the natural flow of a river, stream, or lake is anticipated, please complete the table below.</p> <table border="1" style="width: 100%; border-collapse: collapse;"> <thead> <tr> <th colspan="2" style="text-align: center;">SEASON OF DIVERSION</th> <th rowspan="2" style="text-align: center;">Diversion Purpose (ie. Construction Dewatering / flowing water avoidance...)</th> <th rowspan="2" style="text-align: center;">Summary of potential Aquatic Species Impacts from Dewatering Drawdown or Diversion (stranding, over-bank flooding, flow regime, / velocity change, relocation)</th> </tr> <tr> <th style="text-align: center;">BEGINNING DATE (Month, Year)</th> <th style="text-align: center;">ENDING DATE (Month, Year)</th> </tr> </thead> <tbody> <tr> <td style="height: 20px;"> </td> <td> </td> <td> </td> <td> </td> </tr> <tr> <td style="height: 20px;"> </td> <td> </td> <td> </td> <td> </td> </tr> <tr> <td style="height: 20px;"> </td> <td> </td> <td> </td> <td> </td> </tr> </tbody> </table>				SEASON OF DIVERSION		Diversion Purpose (ie. Construction Dewatering / flowing water avoidance...)	Summary of potential Aquatic Species Impacts from Dewatering Drawdown or Diversion (stranding, over-bank flooding, flow regime, / velocity change, relocation)	BEGINNING DATE (Month, Year)	ENDING DATE (Month, Year)												
SEASON OF DIVERSION		Diversion Purpose (ie. Construction Dewatering / flowing water avoidance...)	Summary of potential Aquatic Species Impacts from Dewatering Drawdown or Diversion (stranding, over-bank flooding, flow regime, / velocity change, relocation)																		
BEGINNING DATE (Month, Year)	ENDING DATE (Month, Year)																				
<p>C2. Specify the maximum instantaneous rate of withdrawal (using proposed equipment) in cubic feet per second (cfs) or gallons per minute (gpm): _____</p>																					
<p>C3. Diversion / Dewatering Plan shall include the following: 1) location & schematic layout of dewatering system; 2) location / schematic layout of diversion channel; 3) location of discharge point to stream channel; 4) description / location(s) of beneficial re-use (Ag, dust control, infiltration); 5) aquatic species exclusion locations and monitoring program; 6) location of surface water monitoring (water elevation / water quality – visual turbidity, discoloration, and other RWQCB parameters); 7) location of any pre-discharge treatment systems; 8) Treatment process diagram(s); and 9) details and MSDS for treatment system chemicals.</p>																					
<p>D. Are any special status animals or plant species considered in RMDP, or habitat that could support such species, known to be present on or near the project site? (if species not discussed in RMDP are present, request consultation with Agencies)</p>																					

SUBNOTIFICATION OF LAKE OR STREAMBED ALTERATION

Yes (*List each species and/or describe the habitat below*)
 No
 Unknown

Scientific Name	Common Name	Primary Habitat Association	Status Onsite or in Project Vicinity
1.			
2.			
3.			
4.			
5.			
6.			

D1. Will activity involve any species relocation, exclusion, or removal?
 Yes (*Include Species Relocation Plan with elements described below*)
 No (*Skip to 7*)

D2. Species relocation plans shall include the following:
 1) list of qualified personnel to perform relocation/trapping; 2) trapping methods; 3) point of reintroduction into natural environment; 4) exclusionary methods to prevent re-habitation of project site; and 5) notification and monitoring procedures and schedule.

7. PROJECT IMPACTS

A. Summarize impacts to the bed, channel, and bank of the river, stream, or lake, and the associated riparian habitat. The Bio. Report shall include a detailed analysis of impacts. Specify the dimensions of the modifications in length (linear feet) and area (square feet of acres) and the type and volume of material (cubic yards) that will be moved, displaced, or otherwise disturbed, if applicable.

Existing Plant Communities and Land Covers	Temporary Impacts (in acres/linear feet)	Permanent Impacts (in acres/linear feet)	Mitigation Proposed (in acres)	Mitigation Type (creation, invasive control, mitigation bank)
Corps Jurisdictional Waters of the US				
Corps Jurisdictional Wetlands				
CDFG Jurisdictional Riparian Forest				
CDFG Jurisdictional Riparian Scrub				
Non-Corps Freshwater Marsh				
Non-Corps Herbaceous Wetlands				
Non-Corps Ephemeral Stream Channel				
Non-Corps Intermittent Stream Channel				
Native Upland Scrub (only include if required to mitigate impacts)				
TOTALS				

B. Will the project affect any native trees greater than 3-in DBH?
 Yes (*Complete the tables below*)
 No

Tree Species	Number of Trees to be Removed
Fremont Cottonwood (<i>Populus Fremontii</i>)	
Willows (<i>Salix</i> species)	
Elderberry (<i>Sambucus Mexicanus</i>)	
Oaks / CA Walnuts / Choke Cherry	
Sycamore (<i>Platanus racemosa</i>)	
Other: _____	

8. FINANCIAL SECURITY, LETTER OF CREDIT, SURETY BOND, OTHER GUARANTY OPTIONS, HABITAT MITIGATION

Is a Cost Estimate for Permanent Impact Mitigation Included?	<input type="checkbox"/> Yes	<input type="checkbox"/> No (<i>check only if mitigation is to be provided through mitigation bank credits</i>)
Is a Cost Estimate for Temporary Impact Mitigation Included?	<input type="checkbox"/> Yes	<input type="checkbox"/> No (<i>check only if mitigation is to be provided through mitigation bank credits</i>)

SUBNOTIFICATION OF LAKE OR STREAMBED ALTERATION

9. ASSOCIATED PERMITS

A. California Department of Fish & Game 2081 Take Permit	
B. U.S. Army Corps of Engineers Section 404 Permit	
C. LA Regional Water Quality Control Board WDR/401 Cert	
D. U.S. Fish & Wildlife Service Biological Opinion	
E. SWRCB NPDES Permit (NOI)	
F. LARWQCB Dewatering Permit	
G. Other: _____	

10. ENVIRONMENTAL REVIEW

A. Has a project level draft or final document been prepared pursuant to the California Environmental Quality Act (CEQA), National Environmental Projection Act (NEPA), California Endangered Species Act (CESA) and/or federal Endangered Species Act (ESA)?			
<input type="checkbox"/> Yes (Check the box for each CEQA, NEPA, CESA, and ESA document that has been prepared and enclose a copy of each) <input type="checkbox"/> No (check the box for each CEQA, NEPA, CESA, and ESA document listed below that will be or is being prepared)			
<input type="checkbox"/> Notice of Exemption	<input type="checkbox"/> Mitigated Negative Declaration	<input type="checkbox"/> NEPA Document (type)	
<input type="checkbox"/> Initial Study	<input type="checkbox"/> Environmental Impact Report	<input type="checkbox"/> CESA Document (type)	
<input type="checkbox"/> Negative Declaration	<input type="checkbox"/> Notice of Determination (Enclose)	<input type="checkbox"/> ESA Document (type)	
<input type="checkbox"/> THP / NTMP	<input type="checkbox"/> Mitigation, Monitoring, Reporting Plan		
B. State Clearinghouse Number		C. CEQA Lead Agency	
D. Contact Person		E. Telephone Number	

11. SIGNATURE

<p>I hereby certify that to the best of my knowledge the information in this notification is true and correct and that I am authorized to sign this notification as, or in behalf of, the applicant. I understand that if any information in this notification is found to be untrue or incorrect, the Department may suspend processing this notification or suspend or revoke any draft of final Lake or Streambed Alteration Agreement issued pursuant to the notification. I understand also that if any information in this notification is found to be untrue or incorrect and the project described in this notification has already begun, I and/or the applicant may be subject to civil or criminal prosecution. I understand that this notification applies only to the project(s) described herein and that I and/or the applicant may be subject to civil or criminal prosecution for undertaking any project not described herein unless the Department has been separately notified of that project in accordance with Fish and Game Code section 1602 or 1611. By signing below, Applicant is certifying that the project is consistent with the RMDP, FEIS/FEIR, and the Agreement, including compliance with environmental protection measures for threatened and endangered species, water quality, and riparian habitat, or if this is a Variance or Amendment submittal, that adequate measures are being proposed to meet the criteria set forth in the Agreement for such approvals.</p>	
_____ Signature of Applicant or Applicant's Authorized Representative	_____ Date
_____ Print Name & Title	

SUBNOTIFICATION OF LAKE OR STREAMBED ALTERATION

<p>DEPARTMENT DECISION:</p> <p>Approved: _____ Date _____</p> <p style="padding-left: 20px;">Title: _____</p> <p>Denied: _____ Date _____</p> <p style="padding-left: 20px;">Title: _____</p> <p>Specific Reason for Denial: _____</p>	<p>Signed: _____</p> <p style="text-align: center;">Newhall Land Date</p> <p>(as transferor/assignor with no future obligations, liabilities, or responsibilities for the specific project as described in this submittal, except as provided in Section 8 of the Agreement)</p>
---	---

SUBNOTIFICATION COMPLETENESS CHECKLIST

Newhall Land RMDP

Master Stream Bed Agreement

Subnotification No. 1600-2004-0016-R5-XXXX

This checklist is to be completed by Operator and submitted with the Subnotification form to facilitate the completeness review pursuant to Section VI.D.1.

RMDP PROJECT CODING & NAME: _____

Subnotification Form Item	Included	Not Included	Not Applicable
ADMINISTRATIVE FEES	<input type="checkbox"/>	<input type="checkbox"/>	<input type="checkbox"/>
1. APPLICANT PROPOSING PROJECT (OPERATOR)	<input type="checkbox"/>	<input type="checkbox"/>	
2. CONTACT PERSON	<input type="checkbox"/>	<input type="checkbox"/>	<input type="checkbox"/>
3. PROPERTY OWNER	<input type="checkbox"/>	<input type="checkbox"/>	<input type="checkbox"/>
4. PROJECT LOCATION			
A. Description of project location	<input type="checkbox"/>	<input type="checkbox"/>	
B. Tributary affected by the Project	<input type="checkbox"/>	<input type="checkbox"/>	<input type="checkbox"/>
C. thru I. Map Information	<input type="checkbox"/>	<input type="checkbox"/>	<input type="checkbox"/>
5. PROJECT CATEGORY AND WORK TYPE	<input type="checkbox"/>	<input type="checkbox"/>	
6. PROJECT DESCRIPTION			
A. Construction Project - Attached Documents			<input type="checkbox"/> , Skip to 6.B.
Project Description	<input type="checkbox"/>	<input type="checkbox"/>	
Biological Technical Report	<input type="checkbox"/>	<input type="checkbox"/>	<input type="checkbox"/>
Vegetation & Land Use Maps	<input type="checkbox"/>	<input type="checkbox"/>	<input type="checkbox"/>
Aerial Photo w/ Project Overlay	<input type="checkbox"/>	<input type="checkbox"/>	<input type="checkbox"/>
Ground Level Photos	<input type="checkbox"/>	<input type="checkbox"/>	<input type="checkbox"/>
Tree Inventory	<input type="checkbox"/>	<input type="checkbox"/>	<input type="checkbox"/>
RMDP FEIR/FEIS Project References & Citations	<input type="checkbox"/>	<input type="checkbox"/>	
Diversion / Dewatering Plan	<input type="checkbox"/>	<input type="checkbox"/>	<input type="checkbox"/>
Species Relocation Plan	<input type="checkbox"/>	<input type="checkbox"/>	<input type="checkbox"/>
Storm Water Management Plan (SWPPP)	<input type="checkbox"/>	<input type="checkbox"/>	<input type="checkbox"/>
Project Plan Set (11" x 17" or 1/2 size)	<input type="checkbox"/>	<input type="checkbox"/>	<input type="checkbox"/>
Mitigation Cost Estimate	<input type="checkbox"/>	<input type="checkbox"/>	<input type="checkbox"/>
Maintenance Plan	<input type="checkbox"/>	<input type="checkbox"/>	<input type="checkbox"/>
Mitigation Plan	<input type="checkbox"/>	<input type="checkbox"/>	<input type="checkbox"/>
B. Maintenance Activity			<input type="checkbox"/> , Skip to 7
Map depicting location & current site conditions	<input type="checkbox"/>	<input type="checkbox"/>	<input type="checkbox"/>
Map depicting stream diversions	<input type="checkbox"/>	<input type="checkbox"/>	<input type="checkbox"/>
Species protection / relocation plans	<input type="checkbox"/>	<input type="checkbox"/>	<input type="checkbox"/>
Description of proposed maintenance activities	<input type="checkbox"/>	<input type="checkbox"/>	<input type="checkbox"/>
Description of post-maintenance restoration	<input type="checkbox"/>	<input type="checkbox"/>	<input type="checkbox"/>
B1. Conformity to <i>General Measures</i>	<input type="checkbox"/>	<input type="checkbox"/>	<input type="checkbox"/>
B2. Conformity to <i>Feature Specific Measures</i>	<input type="checkbox"/>	<input type="checkbox"/>	<input type="checkbox"/>
B3. Maintenance Equipment List	<input type="checkbox"/>	<input type="checkbox"/>	<input type="checkbox"/>
C. Stream Diversion Information	<input type="checkbox"/>	<input type="checkbox"/>	<input type="checkbox"/>
D. Special Status Species Information	<input type="checkbox"/>	<input type="checkbox"/>	<input type="checkbox"/>
7. PROJECT IMPACTS			<input type="checkbox"/> , Skip to 8
A. Summary of Jurisdiction Impacts (linear ft. & acreage)	<input type="checkbox"/>	<input type="checkbox"/>	<input type="checkbox"/>
B. Summary of Tree Impacts	<input type="checkbox"/>	<input type="checkbox"/>	<input type="checkbox"/>
8. Financial Security (LOC, Bond, other deposit)	<input type="checkbox"/>	<input type="checkbox"/>	<input type="checkbox"/>
9. Associated Permits	<input type="checkbox"/>	<input type="checkbox"/>	<input type="checkbox"/>
10. Environmental Review Status	<input type="checkbox"/>	<input type="checkbox"/>	<input type="checkbox"/>
11. Operator Signature	<input type="checkbox"/>	<input type="checkbox"/>	<input type="checkbox"/>

SUBNOTIFICATION OF LAKE OR STREAMBED ALTERATION

For any items above that have been checked as NOT-INCLUDED, please provide a summary justification and reasoning for not including such information. This information will be useful in determining whether the Subnotification is complete in accordance with Section VI.D.1 Completeness Review, which starts the Subnotification Review period.

Note that similar information is not being requested for items marked as NOT-APPLICABLE, although it may be beneficial to include justification that these items are not applicable. The Department's reviewer may deem such plans and information necessary to verify consistency with the RMDP during the Subnotification Notice review period, possibly resulting in denial of the project.

CHECKLIST ITEM # & DESCRIPTION	REASON / JUSTIFICATION FOR NOT INCLUDING IN SUBnOTIFICATION
ITEMS: ADMINSTRATIVE FEES THRU 6.B. Maintenance Activity	
ADMINISTRATIVE FEES	Justification: _____
ADMINISTRATIVE FEES	Justification: _____
ADMINISTRATIVE FEES	Justification: _____
ADMINISTRATIVE FEES	Justification: _____
ADMINISTRATIVE FEES	Justification: _____
ADMINISTRATIVE FEES	Justification: _____
ADMINISTRATIVE FEES	Justification: _____
ADMINISTRATIVE FEES	Justification: _____
ADMINISTRATIVE FEES	Justification: _____
ADMINISTRATIVE FEES	Justification: _____
ADMINISTRATIVE FEES	Justification: _____
ADMINISTRATIVE FEES	Justification: _____

SUBNOTIFICATION OF LAKE OR STREAMBED ALTERATION

ITEMS: 6.B.1. Maintenance Conformity to *General Measures* THRU 11. OPERATOR SIGNATURE

6.B1. Conformity to General Measures	Justification: _____
6.B1. Conformity to General Measures	Justification: _____
6.B1. Conformity to General Measures	Justification: _____
6.B1. Conformity to General Measures	Justification: _____
6.B1. Conformity to General Measures	Justification: _____
6.B1. Conformity to General Measures	Justification: _____
6.B1. Conformity to General Measures	Justification: _____
6.B1. Conformity to General Measures	Justification: _____
6.B1. Conformity to General Measures	Justification: _____
6.B1. Conformity to General Measures	Justification: _____
6.B1. Conformity to General Measures	Justification: _____
6.B1. Conformity to General Measures	Justification: _____
6.B1. Conformity to General Measures	Justification: _____
6.B1. Conformity to General Measures	Justification: _____
6.B1. Conformity to General Measures	Justification: _____
6.B1. Conformity to General Measures	Justification: _____

**EXHIBIT 4
PRE-CONSTRUCTION SURVEY CHECKLIST
NEWHALL RANCH RESOURCE MANAGEMENT & DEVELOPMENT PLAN**

The pre-construction survey checklist will be developed once the mitigation measures have been finalized. Those measures will dictate the various pre-construction surveys required prior to impacting vegetation and/or ground disturbance (as well as timing of such surveys as they may be applicable at different times of the year).

**Newhall Land Master Streambed Alteration Agreement
CDFG 1600 Notification No. 1600-2004-0016-R5**

**EXHIBIT 5
MITIGATION ACCOUNTING FORM**

NEWHALL RANCH RESOURCE MANAGEMENT & DEVELOPMENT PLAN (RMDP)
SANTA CLARA RIVER, CASTAIC CREEK, POTRERO, LONG CANYON, LION CANYON, SAN MARTINEZ
CANYON, CHIQUITO CANYON, SALT CREEK and OTHER MINOR TRIBUTARIES

Date: _____

1. As of this date Newhall Land Planted _____ Acres of mitigation area.
2. As of this date Newhall Land Removed _____ Acres of invasive species.
3. As of this date Newhall Land Has _____ Acres of Mitigation Credits.

Specific mitigation areas have been designated by Subnotification project as follows:

<u>Project Description</u>	MSAA Fig. #	Mitigation Required <i>(acres)</i>	Mitigation Proposed Onsite <i>(acres)</i>	Mitigation Bank Credits To Be Applied <i>(acres)</i>	Mitigation Status & Remaining Mitigation Credit Balance

Permittee

Signed: _____

Date

Agency/Company _____

EXHIBIT 6
ANNUAL REPORT: PERMIT YEAR (JULY 20XX - JUNE 20XX)
NEWHALL RANCH RESOURCE MANAGEMENT & DEVELOPMENT PLAN

Prepared by:

Prepared on:

The following report provides information on current and contemplated projects during the next 12-month period under the Newhall Ranch Master Streambed Alteration Agreement (**No. 1600-2004-0016-R5**) issued by the California Department of Fish and Game (CDFG). The projects are components of the Newhall Ranch Resource Management & Development Plan (RMDP). The following list of RMDP projects that are expected to be implemented in the next year is based on current development plans by Newhall Land, and public agencies where Newhall Land has direct involvement in infrastructure development, and is subject to change based on economic factors, actions by other regulatory agencies, and internal business or planning decisions by Newhall Land, and public agency direction on transportation infrastructure projects. To the extent feasible, 3rd party and governmental agency use of the permits has been incorporated. The "Permit Year" referenced herein is considered as July 1, 20XX thru June 30, 20XX, although to the extent possible, other RMDP activities otherwise not described in prior reports have been included as occurring within the "Permit Year" to ensure a complete reporting of activities.

Annual Report

1. On or before April 1 of each year, an annual report (Annual Report Outline) shall be submitted by Newhall or Operator detailing the following:
 - a. Results of all pre-construction special status species survey and relocation efforts during the prior year shall be summarized and submitted in tabular form, with figures indicating survey limits, sensitive species discovered, and location of deposition of recovered plant and animal species. This Pre-Construction Survey Checklist shall be in the form provided in **Exhibit 4**, which is attached hereto, incorporated by reference, and made a part of this Agreement.
 - b. Results of parasitic animal species control from the prior year shall be summarized and submitted in tabular form, with figures indicating locations of control efforts.
 - c. Newhall or Operator shall file a Mitigation Accounting Form annually. The Mitigation Account Form shall be in the form provided in **Exhibit 5**, which is attached hereto, incorporated by reference, and made a part of this Agreement, and shall document the amount of vegetation planted during the past year, any "in-lieu fees" paid for exotic

EXHIBIT 6
ANNUAL REPORT: PERMIT YEAR (JULY 20XX - JUNE 20XX)
NEWHALL RANCH RESOURCE MANAGEMENT & DEVELOPMENT PLAN

Prepared by:

Prepared on:

invasive plant species control, the status of all mitigation credits to date, and any credits subtracted by projects implemented during the past year.

- d. Candidate restoration sites shall be selected by Newhall and described in the Annual Report Outline, which shall be in the form provided in **Exhibit 6**, attached hereto, incorporated by reference, and made a part of this Agreement.
 - e. The Annual Report Outline shall include any required plans for plant spacing, locations of candidate restoration and weed control sites, or proposed "in-lieu fees," restoration methods, and vegetation community restoration performance standards.
 - f. For active vegetation community creation sites, the Annual Report Outline shall include the survival, percent cover, and height of planted species, the number by species of plants replaced, an overview of the revegetation effort and its success in meeting performance criteria, the method used to assess these parameters, and photographs.
 - g. For active exotics control sites, the Annual Report Outline shall include an assessment of weed removal; a description of the relative cover of native vegetation, bare areas, and exotic vegetation; colonization by native plants; and photographs.
2. The Annual Report shall include summary descriptions of RMDP Component projects pursuant to the following:
- A. Completed Subnotification projects prior to the "Permit Year"** (include projects that are anticipated to be completed between this report date and July 1, 20XX)
 1. Project Name (Completion Date)
Project Description & Mitigation Implementation Status
 - B. Anticipated Subnotification submittals in the "Permit Year"**
 1. Project Name (Expected Submittal Date)
Project Description & Development Plan Status

EXHIBIT 6
ANNUAL REPORT: PERMIT YEAR (JULY 20XX - JUNE 20XX)
NEWHALL RANCH RESOURCE MANAGEMENT & DEVELOPMENT PLAN

Prepared by:

Prepared on:

C. Anticipated Subnotifications to be Active in the “Permit Year”

Table 1 lists the proposed construction schedules for all projects that are anticipated to be active during the permit year, July 1, 20XX - June 30, 20XX. This table includes projects where construction was completed during the prior reporting period, but mitigation planting has not yet been completed.

Project Name	SubNot. #	Project Start Date	Approx. Project Completion Date	Anticipated Start of Mitigation Planting

E. Any Significant Environmental Changes Observed in the Project Area (e.g., Flooding Events, Actions by Others Affecting the Riverbed)

F. Graphics showing all of the Projects under the Permit that are discussed in Sections A, B or C above.

G. Documentation of Cumulative Acreage of Temporary and Permanent Impacts to Riparian Habitat Authorized to Date, Comprised of a Listing of Active and Completed Projects.

See attached summary Tables 1 & 2.

EXHIBIT 6
ANNUAL REPORT: PERMIT YEAR (JULY 20XX - JUNE 20XX)
NEWHALL RANCH RESOURCE MANAGEMENT & DEVELOPMENT PLAN

Prepared by:

Prepared on:

TABLE 1. ACTIVE PROJECTS: CUMULATIVE ACREAGE OF IMPACTS TO RIPARIAN HABITAT				
PROJECT	TEMPORARY IMPACTS	PERMANENT IMPACTS	PROJECT APPROVAL DATE	CONSTRUCTION PERIOD
TOTAL =	XX.X acres	XX.X acres	Mitigation Bank Established to date: XX.X acres invasive species credits XX.X acres creation areas XX.X acres total mitigation credits	

TABLE 2. COMPLETED PROJECTS CUMULATIVE ACREAGE OF IMPACTS TO RIPARIAN HABITAT						
Project Name and Dates of Project Approval and Project Completion	Subnotification No.	Actual Temporary Impacts (Explain any deviation from Subnotif. Below)	Required Temporary Mitigation Acreage	Actual Permanent Impacts (Explain any deviation from Subnotif. below)	Required Permanent Mitigation Acreage	Summary of Impacts to Other Resources (non-riparian, tree, etc)
	SUB TOTAL =	XX.X acres	XX.X acres	XX.X acres	XX.X acres	(Summary of Other)

MASTER STREAMBED ALTERATION AGREEMENT

EXHIBIT 7

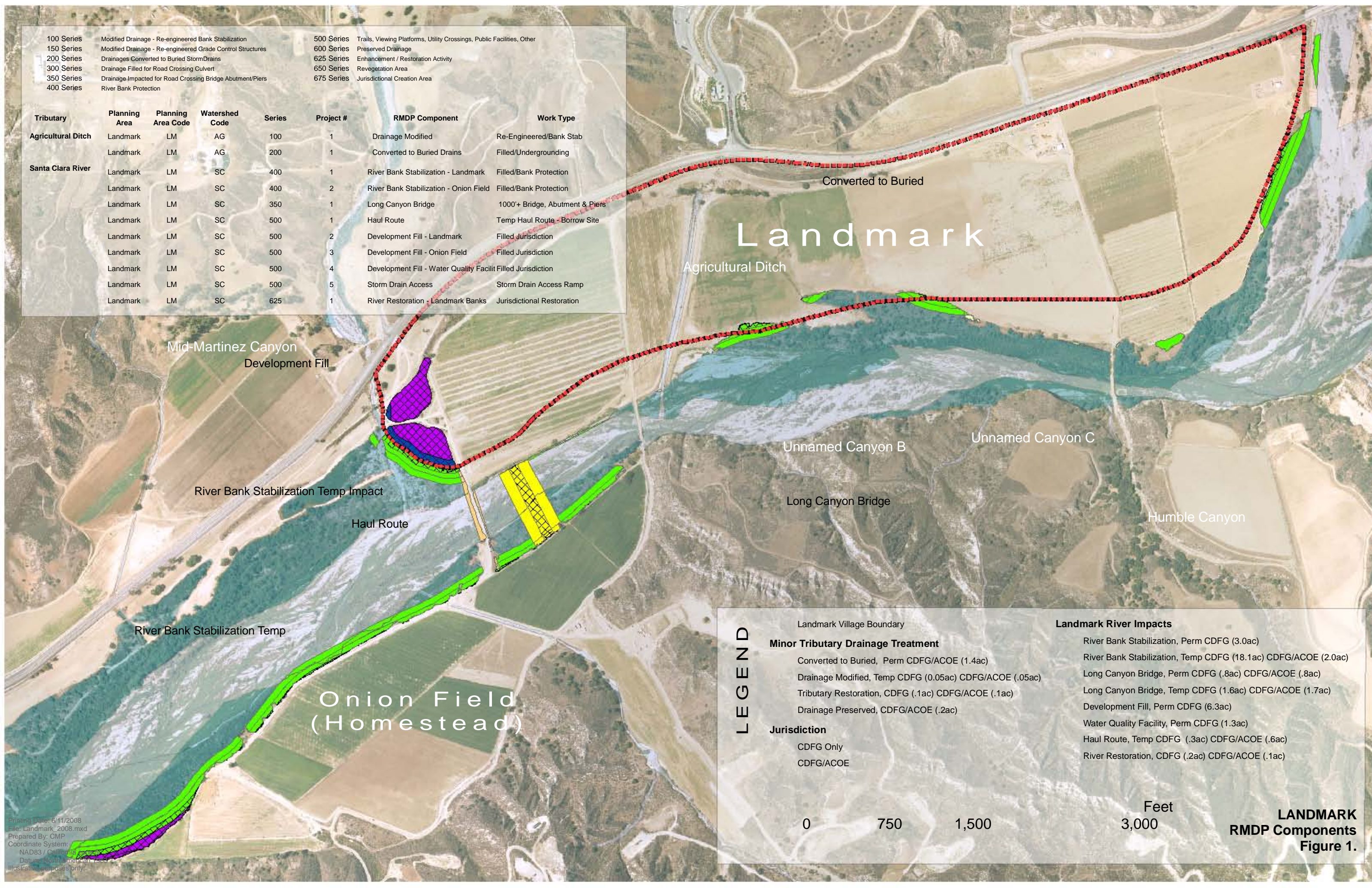
RMDP Components Impact Graphics: Components by Village

FIGURES

- Figure 1 Landmark Village – RMDP Component Impacts
- Figure 2 Mission Village – RMDP Component Impacts
- Figure 2a Mission Village Detail – Lion Canyon Component Impacts
- Figure 3 Homestead Village – RMDP Component Impacts
- Figure 3a Homestead Village Detail – Chiquito Canyon Drainage
- Figure 3b Homestead Village Detail – San Martinez Grande Drainage
- Figure 3c Homestead Village Detail – Long Canyon Drainage
- Figure 4 Potrero Village – RMDP Component Impacts
- Figure 5 Utilities, SR-126, & Recreational Facilities – RMDP Component Impacts

100 Series	Modified Drainage - Re-engineered Bank Stabilization	500 Series	Trails, Viewing Platforms, Utility Crossings, Public Facilities, Other
150 Series	Modified Drainage - Re-engineered Grade Control Structures	600 Series	Preserved Drainage
200 Series	Drainages Converted to Buried Storm Drains	625 Series	Enhancement / Restoration Activity
300 Series	Drainage Filled for Road Crossing Culvert	650 Series	Revegetation Area
350 Series	Drainage Impacted for Road Crossing Bridge Abutment/Piers	675 Series	Jurisdictional Creation Area
400 Series	River Bank Protection		

Tributary	Planning Area	Planning Area Code	Watershed Code	Series	Project #	RMDP Component	Work Type
Agricultural Ditch	Landmark	LM	AG	100	1	Drainage Modified	Re-Engineered/Bank Stab
	Landmark	LM	AG	200	1	Converted to Buried Drains	Filled/Undergrounding
Santa Clara River	Landmark	LM	SC	400	1	River Bank Stabilization - Landmark	Filled/Bank Protection
	Landmark	LM	SC	400	2	River Bank Stabilization - Onion Field	Filled/Bank Protection
	Landmark	LM	SC	350	1	Long Canyon Bridge	1000+ Bridge, Abutment & Piers
	Landmark	LM	SC	500	1	Haul Route	Temp Haul Route - Borrow Site
	Landmark	LM	SC	500	2	Development Fill - Landmark	Filled Jurisdiction
	Landmark	LM	SC	500	3	Development Fill - Onion Field	Filled Jurisdiction
	Landmark	LM	SC	500	4	Development Fill - Water Quality Facility	Filled Jurisdiction
	Landmark	LM	SC	500	5	Storm Drain Access	Storm Drain Access Ramp
	Landmark	LM	SC	500	5	Storm Drain Access	Storm Drain Access Ramp
	Landmark	LM	SC	625	1	River Restoration - Landmark Banks	Jurisdictional Restoration



LEGEND

Landmark Village Boundary

Minor Tributary Drainage Treatment

- Converted to Buried, Perm CDFG/ACOE (1.4ac)
- Drainage Modified, Temp CDFG (0.05ac) CDFG/ACOE (.05ac)
- Tributary Restoration, CDFG (.1ac) CDFG/ACOE (.1ac)
- Drainage Preserved, CDFG/ACOE (.2ac)

Jurisdiction

- CDFG Only
- CDFG/ACOE

Landmark River Impacts

- River Bank Stabilization, Perm CDFG (3.0ac)
- River Bank Stabilization, Temp CDFG (18.1ac) CDFG/ACOE (2.0ac)
- Long Canyon Bridge, Perm CDFG (.8ac) CDFG/ACOE (.8ac)
- Long Canyon Bridge, Temp CDFG (1.6ac) CDFG/ACOE (1.7ac)
- Development Fill, Perm CDFG (6.3ac)
- Water Quality Facility, Perm CDFG (1.3ac)
- Haul Route, Temp CDFG (.3ac) CDFG/ACOE (.6ac)
- River Restoration, CDFG (.2ac) CDFG/ACOE (.1ac)

0 750 1,500 3,000 Feet

LANDMARK RMDP Components Figure 1.

Printing Date: 6/11/2008
 File: Landmark_2008.mxd
 Prepared By: CMP
 Coordinate System:
 NAD83 / California State Plane
 Datum: North American 1983
 Illustration purposes only.

**MISSION
RMDP Components
Figure 2.**

Tributary	Planning Area	Planning Area Code	Watershed Code	Series	Project #	RMDP Component	Work Type
Dead-End Canyon	Mission	MI	DE	200		Drainages Converted to Buried Drains	Filled / Undergrounding
	Mission	MI	EX	200		Drainages Converted to Buried Drains	Filled / Undergrounding
Exxon Canyon	Mission	MI	EX	600		Drainage Preserved	Preserved
	Mission	MI	MI	200		Drainages Converted to Buried Drains	Filled / Undergrounding
Middle Canyon	Mission	MI	MI	600		Drainage Preserved	Preserved
	Mission	MI	MM	200		Drainages Converted to Buried Drains	Filled / Undergrounding
Unnamed Entrada 1	Mission	MI	UN1	200		Drainages Converted to Buried Drains	Filled / Undergrounding
Unnamed Entrada 2	Mission	MI	UN2	200		Drainages Converted to Buried Drains	Filled / Undergrounding
Unnamed Canyon D	Mission	MI	UND	200		Drainages Converted to Buried Drains	Filled / Undergrounding
	Mission	MI	UND	600		Drainage Preserved	Preserved
Santa Clara River	Mission	MI	SC	400		River Bank Stabilization - Comm Ctr Brdg South Abut	Filled / Bank Protection
	Mission	MI	SC	400		River Bank Stabilization - Regional Storm Water Basin	Filled / Bank Protection
	Mission	MI	SC	350		Commerce Center Bridge	1000+ Bridge, Abutment & Piers
	Mission	MI	SC	500		Development Fill - Comm Ctr Bridge North	Filled / Bridge Approach
	Mission	MI	SC	500		Development Fill - Comm Ctr Bridge South	Filled / Bridge Approach

LEGEND

Mission Village Boundary

Mission Jurisdiction Impacts

- River Bank Stabilization, Perm CDFG (.2ac) CDFG/ACOE (0.0ac)
- River Bank Stabilization, Temp CDFG (2.2ac) CDFG/ACOE (0.0ac)
- Commerce Center Bridge, Perm CDFG (2.5ac) CDFG/ACOE (.4ac)
- Commerce Center Bridge, Temp CDFG (3.6ac) CDFG/ACOE (.6ac)
- Development Fill, Perm CDFG (3.1ac)

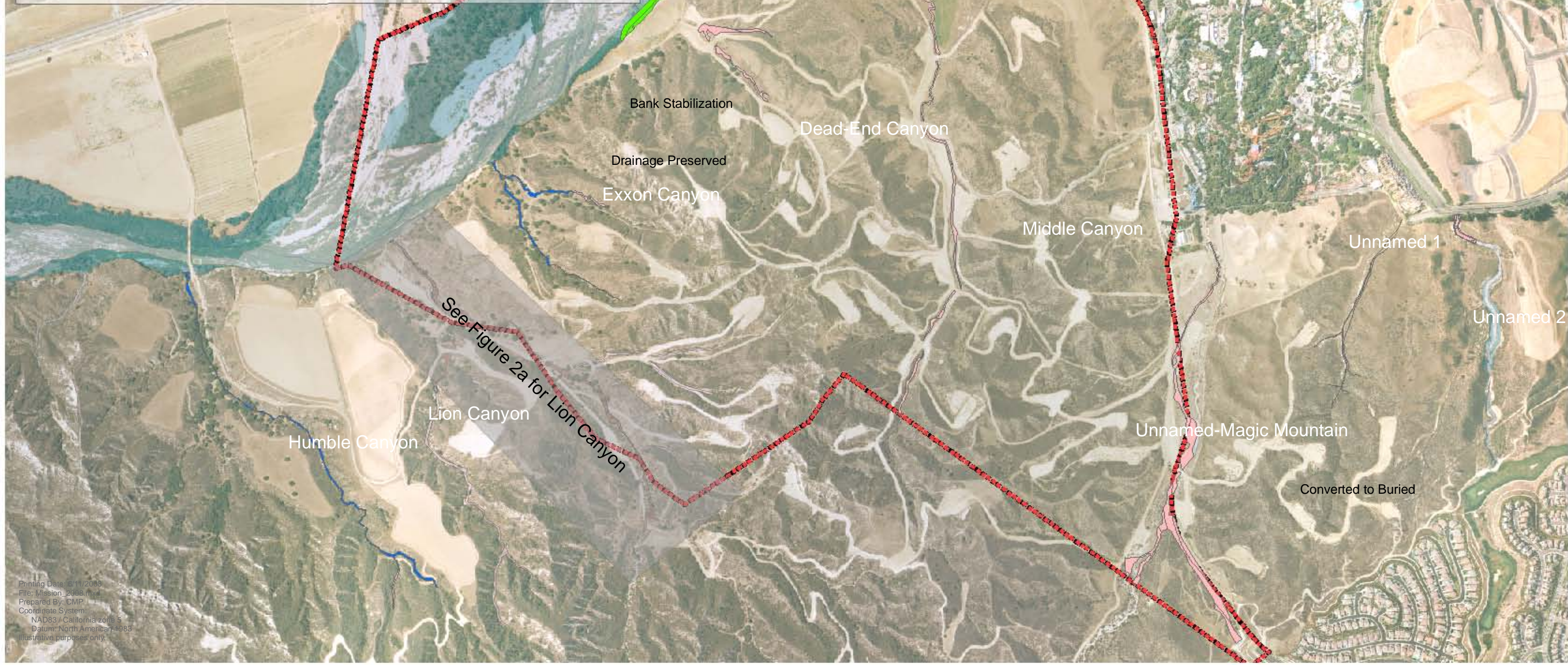
Minor Tributary Treatment

- Converted to Buried, Perm CDFG (.2ac) CDFG/ACOE (15.0ac)
- Drainage Preserved, CDFG (.04ac) CDFG/ACOE (5.1ac)

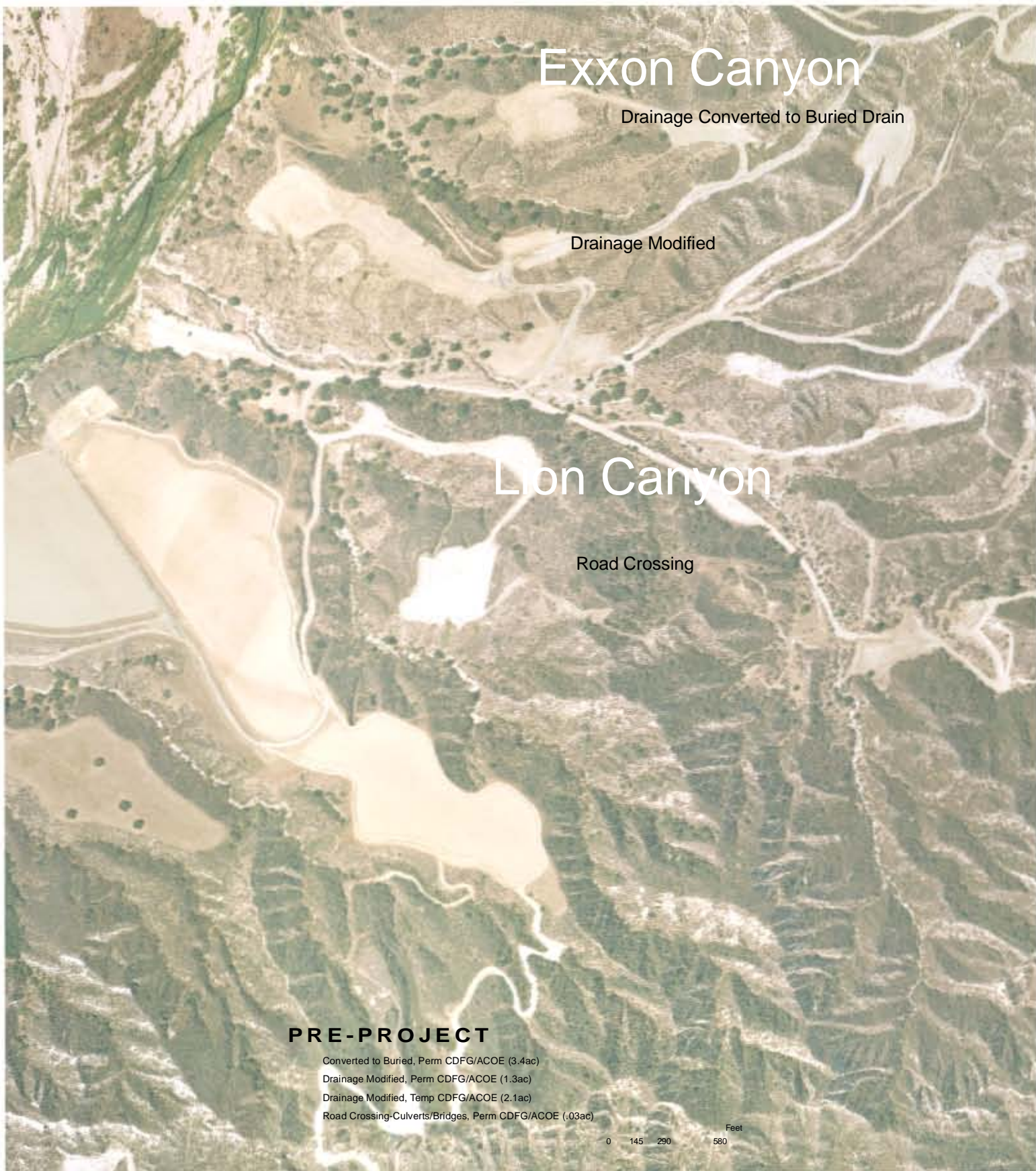
Jurisdiction

- CDFG Only
- CDFG/ACOE

0 485 970 1,940 Feet



Printing Date: 6/11/2008
 File: Mission_2008.mxd
 Prepared By: CMP
 Coordinate System:
 NAD83 / California zone 5
 Datum: North American 1983
 Illustrative purposes only.



Printing Date: 6/20/2008
 File: LionCyn_2008.mxd
 Coordinate System:
 NAD83 / California zone 5
 Datum: North American 1983
 Illustrative purposes only.

Tributary	Planning Area	Planning Area Code	Watershed Code	Series	Project #	RMDP Component	Work Type
Lion Canyon	Mission	MI	LI	150	2	Modified: Grade Control Structures	Re-Engineered/Grade Stab
	Mission	MI	LI	200	2	Drainages Converted to Buried Drains	Filled/Undergrounding
	Mission	MI	LI	300	2	Road Crossings - Culverts	Filled/Culvert Crossing
	Mission	MI	LI	650	2	Drainage Revegetation	Revegetation

Pre-Project Drainage Jurisdiction ²	Drainages Modified ³ Impacted	Drainages Modified ³ Total	Drainages Converted to Buried Drains	Drainages Preserved	Road Crossings - Bridges - Total	Road Crossings - Culverts - Total	Post-Project Drainage Jurisdiction	Net Newly Created Jurisdiction	Bank Stabilization West	Bank Stabilization East	Grade Control Structures
(Feet) (Acres)	(Feet) (Acres)	(Feet) (Acres)	(Feet) (Acres)	(Feet) (Acres)	(Qty) (Acres)	(Qty) (Acres)	(Acres)	(Acres)	(Feet)	(Feet)	(Qty)
11,930 6.9	5,614 3.0	6,316 3.4				1 0.4	3.7	-3.1			28

LI ON CANYON RMDP COMPONENTS Figure 2a.

**HOMESTEAD
RMDP Components
Figure 3.**

Tributary	Planning Area	Planning Area Code	Watershed Code	Series	Project #	RMDP Component	Work Type
Ayers Canyon3	Homestead	HS	AY	300		Road Crossings - Culverts	Filled/Culvert Crossing
	Homestead	HS	AY	600		Drainage Preserved	Preserved
Homestead Canyon	Homestead	HS	HS	200		Drainages Converted to Buried Drains	Filled/Undergrounding
	Homestead	HS	HS	600		Drainage Preserved	Preserved
Humble Canyon	Homestead	HS	HU	200		Drainages Converted to Buried Drains	Filled/Undergrounding
	Homestead	HS	HU	600		Drainage Preserved	Preserved
Mid-Martinez Canyon	Homestead	HS	MMC	200		Drainages Converted to Buried Drains	Filled/Undergrounding
	Homestead	HS	MMC	600		Drainage Preserved	Preserved
Off-Haul Canyon	Homestead	HS	OH	200		Drainages Converted to Buried Drains	Filled/Undergrounding
	Homestead	HS	OH	600		Drainage Preserved	Preserved
Unnamed Canyon A	Homestead	HS	UNA	600		Drainage Preserved	Preserved
	Homestead	HS	UNA	200		Drainages Converted to Buried Drains	Filled/Undergrounding
Unnamed Canyon B	Homestead	HS	UNB	600		Drainage Preserved	Preserved
	Homestead	HS	UNB	200		Drainages Converted to Buried Drains	Filled/Undergrounding
Unnamed Canyon C	Homestead	HS	UNC	200		Drainages Converted to Buried Drains	Filled/Undergrounding
	Homestead	HS	UNC	600		Drainage Preserved	Preserved

100 Series Modified Drainage - Re-engineered Bank Stabilization
 150 Series Modified Drainage - Re-engineered Grade Control Structures
 200 Series Drainages Converted to Buried StormDrains
 300 Series Drainage Filled for Road Crossing Culvert
 350 Series Drainage Impacted for Road Crossing Bridge Abutment/Piers
 400 Series River Bank Protection

500 Series Trails, Viewing Platforms, Utility Crossings, Public Facilities, Other
 600 Series Preserved Drainage
 625 Series Enhancement / Restoration Activity
 650 Series Revegetation Area
 675 Series Jurisdictional Creation Area

LEGEND

Anno_CDFG_2004

Homestead Village Boundary

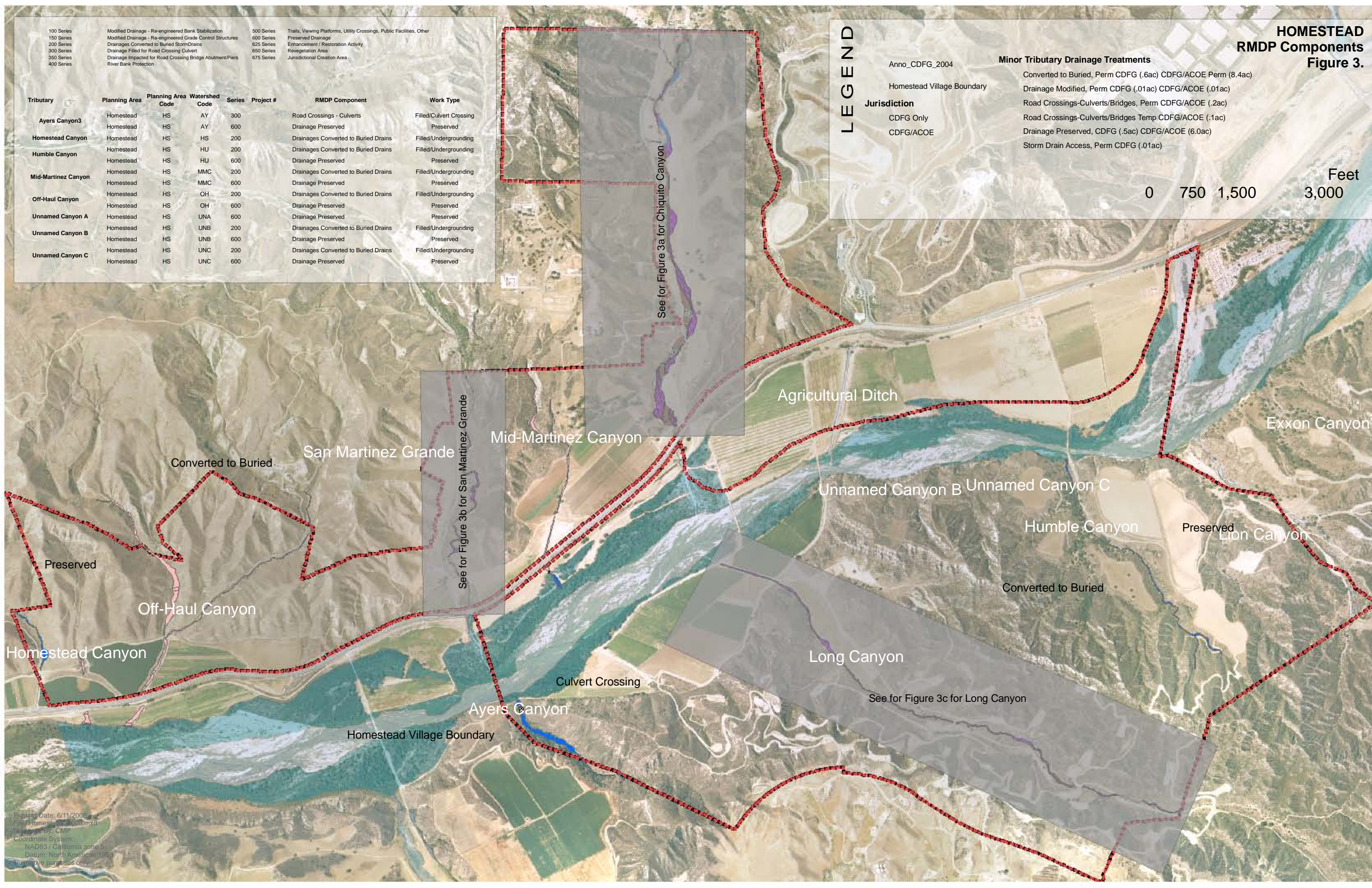
Jurisdiction

- CDFG Only
- CDFG/ACOE

Minor Tributary Drainage Treatments

- Converted to Buried, Perm CDFG (.6ac) CDFG/ACOE Perm (8.4ac)
- Drainage Modified, Perm CDFG (.01ac) CDFG/ACOE (.01ac)
- Road Crossings-Culverts/Bridges, Perm CDFG/ACOE (.2ac)
- Road Crossings-Culverts/Bridges Temp CDFG/ACOE (.1ac)
- Drainage Preserved, CDFG (.5ac) CDFG/ACOE (6.0ac)
- Storm Drain Access, Perm CDFG (.01ac)

0 750 1,500 3,000 Feet



Printing Date: 6/11/2008
 File: Homestead_2008.mxd
 Printed By: CMP
 Coordinate System:
 NAD83 / California zone 5
 Datum: North American 1983
 Illustrative purposes only.



Tributary	Planning Area	Planning Area Code	Watershed Code	Series	Project #	RMDP Component	Work Type
Chi Qui to Canyon	Homestead	HS	CH	100	1	Modified: Bank Stabilization	Re-Engineered/Bank Stab
	Homestead	HS	CH	150	1	Modified: Grade Control Structures	Re-Engineered/Grade Stab
	Homestead	HS	CH	200	1	Drainages Converted to Buried Drains	Filled/Undergrounding
	Homestead	HS	CH	300	1	Road Crossings - Culverts	Filled/Culvert Crossing
	Homestead	HS	CH	600	1	Drainage Preserved	Preserved
	Homestead	HS	CH	650	1	Drainage Revegetation	Revegetation

Pre-Project Drainage Jurisdiction ²	Drainages Modified ³ Impacted	Drainages Modified ³ Total	Drainages Converted to Buried Drains	Drainages Preserved	Road Crossings - Bridges Total	Road Crossings - Culverts Total	Post-Project Drainage Jurisdiction	Net Newly Created Jurisdiction	Bank Stabilization West	Bank Stabilization East	Grade Control Structures	
(Feet)	(Acres)	(Feet)	(Acres)	(Feet)	(Qty)	(Acres)	(Acres)	(Acres)	(Feet)	(Feet)	(Qty)	
12,059	18.3	8,612	16.0	2,549	1.0	0	0.1	3	0.9	16.4	-1.9	11



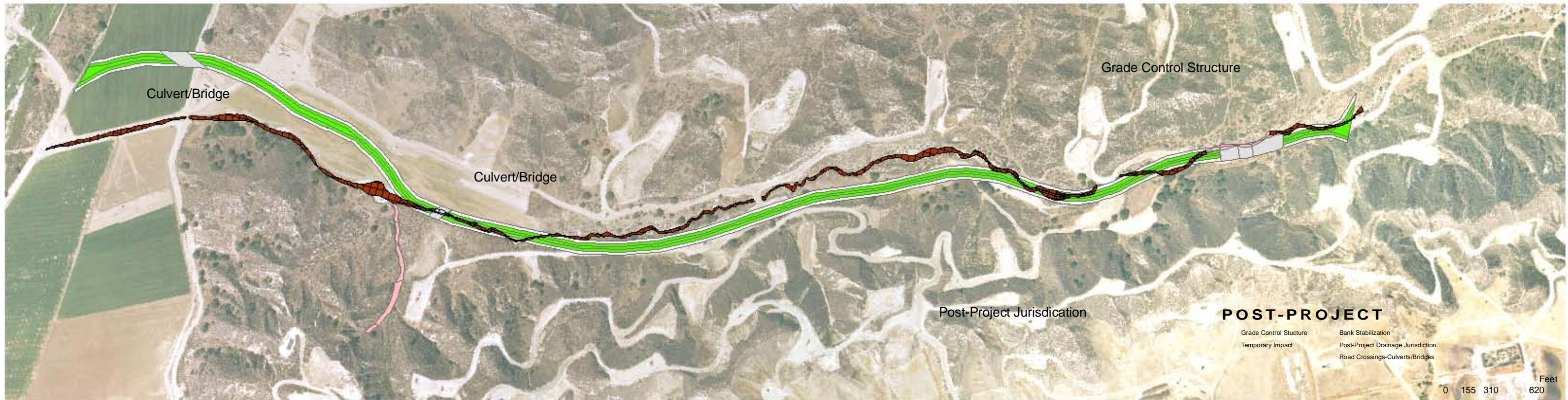
Tributary	Planning Area	Planning Area Code	Watershed Code	Series	Project #	RMDP Component	Work Type
	Homestead	HS	SMG	100	4	Modified: Bank Stabilization	Re-Engineered/Bank Slab
	Homestead	HS	SMG	150	5	Modified: Grade Control Structures	Re-Engineered/Grade Slab
San Martinez Grande Canyon	Homestead	HS	SMG	300	5	Road Crossings - Culverts	Filled/Culvert Crossing
	Homestead	HS	SMG	600	3	Drainage Preserved	Preserved
	Homestead	HS	SMG	650	5	Drainage Revegetation	Revegetation

Pre-Project Drainage Jurisdiction ²	Drainages Modified ³ Impacted	Drainages Modified ³ Total	Drainages Converted to Buried Drains	Drainages Preserved	Road Crossings - Bridges Total	Road Crossings - Culverts Total	Post-Project Drainage Jurisdiction	Net Newly Created Jurisdiction	Bank Stabilization West	Bank Stabilization East	Grade Control Structures	
(Feet)	(Acres)	(Feet)	(Acres)	(Feet)	(Acres)	(Qty)	(Acres)	(Acres)	(Feet)	(Feet)	(Qty)	
5,170	2.6	5,126	2.4	43	0.0	0	0.1	2	0.0	4,279	4,287	8

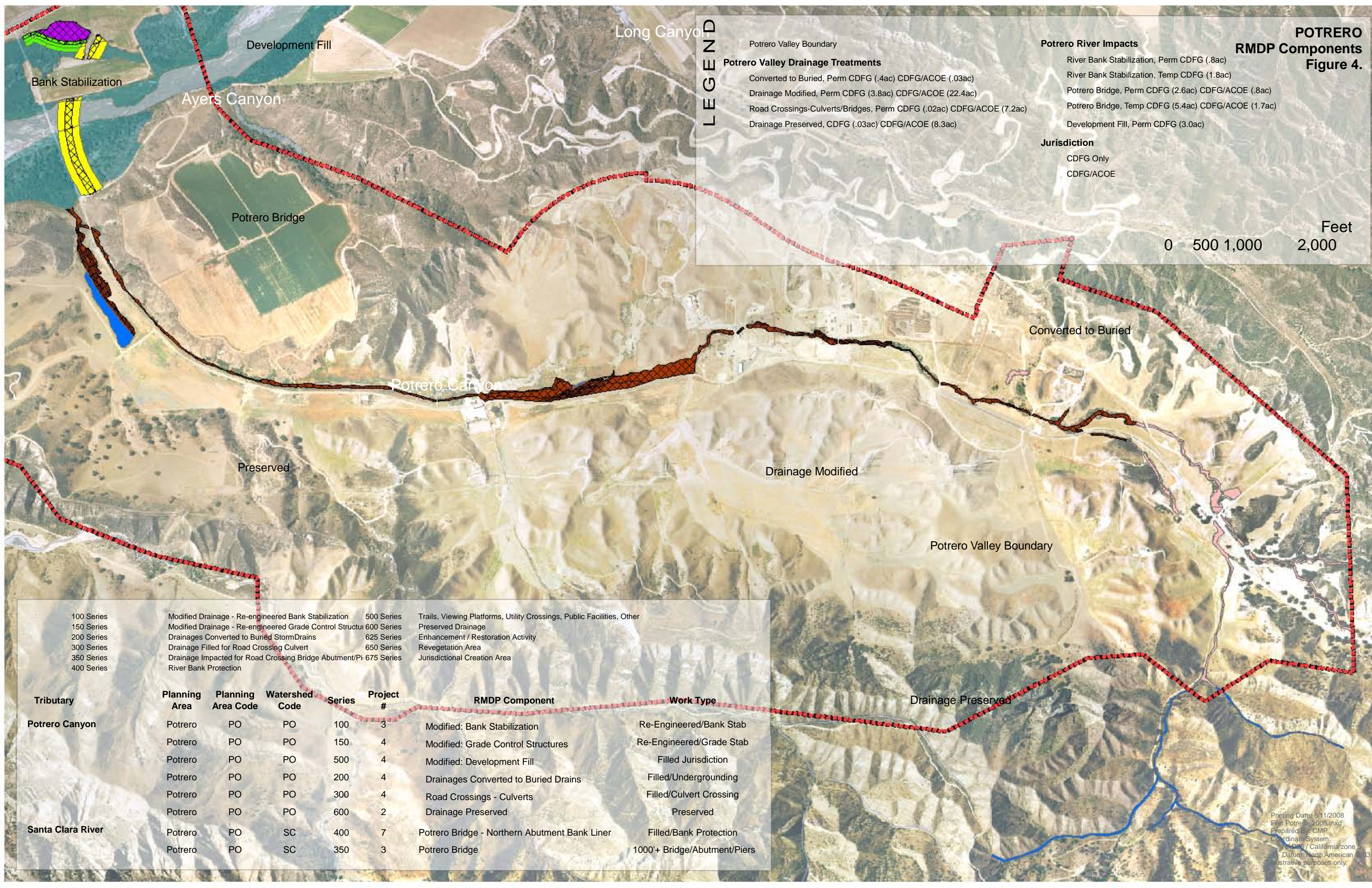
Printing Date: 6/20/2008
 File: SanMrtinz_2008.mxd
 Coordinate System:
 NAD83 / California zone 5
 Datum: North American 1983
 Illustrative purposes only.



Tributary	Planning Area	Planning Area Code	Watershed Code	Series	Project #	RMDP Component	Work Type	Pre-Project Drainage Jurisdiction ²		Drainages Modified ³		Drainages Converted to Buried Drains		Drainages Preserved		Road Crossings - Bridges Total		Road Crossings - Culverts Total		Post-Project Drainage Jurisdiction	Net Newly Created Jurisdiction	Bank Stabilization		Grade Control Structures
								(Feet)	(Acres)	(Feet)	(Acres)	(Feet)	(Acres)	(Feet)	(Acres)	(Qty)	(Acres)	(Qty)	(Acres)			(Acres)	(Feet)	
Long Canyon	Homestead	HS	LO	100	2	Modified: Bank Stabilization	Re-Engineered/Bank Stab			9,618	4.8											8,833	8,815	44
	Homestead	HS	LO	150	3	Modified: Grade Control Structures	Re-Engineered/Grade Stab																	
	Homestead	HS	LO	200	3	Drainages Converted to Buried Drains	Filled/Undergrounding	10,579	5.7			961	0.7											
	Homestead	HS	LO	300	3	Road Crossings - Culverts	Filled/Culvert Crossing											3	0.3					
	Homestead	HS	LO	650	3	Drainage Revegetation	Revegetation													10.7	5.0			



POTRERO RMDP Components Figure 4.



LEGEND

Potrero Valley Boundary

Potrero Valley Drainage Treatments

- Converted to Buried, Perm CDFG (.4ac) CDFG/ACOE (.03ac)
- Drainage Modified, Perm CDFG (3.8ac) CDFG/ACOE (22.4ac)
- Road Crossings-Culverts/Bridges, Perm CDFG (.02ac) CDFG/ACOE (7.2ac)
- Drainage Preserved, CDFG (.03ac) CDFG/ACOE (8.3ac)

Potrero River Impacts

- River Bank Stabilization, Perm CDFG (.8ac)
- River Bank Stabilization, Temp CDFG (1.8ac)
- Potrero Bridge, Perm CDFG (2.6ac) CDFG/ACOE (.8ac)
- Potrero Bridge, Temp CDFG (5.4ac) CDFG/ACOE (1.7ac)
- Development Fill, Perm CDFG (3.0ac)

Jurisdiction

- CDFG Only
- CDFG/ACOE

0 500 1,000 2,000 Feet

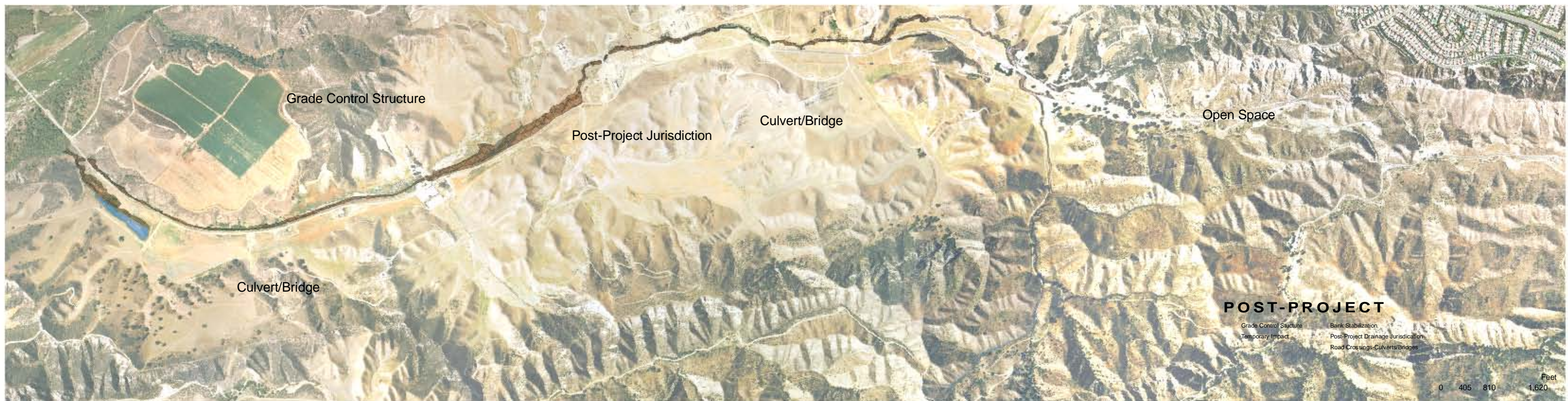
Tributary	Planning Area	Planning Area Code	Watershed Code	Series	Project #	RMDP Component	Work Type
Potrero Canyon	Potrero	PO	PO	100	3	Modified: Bank Stabilization	Re-Engineered/Bank Stab
	Potrero	PO	PO	150	4	Modified: Grade Control Structures	Re-Engineered/Grade Stab
	Potrero	PO	PO	500	4	Modified: Development Fill	Filled Jurisdiction
	Potrero	PO	PO	200	4	Drainages Converted to Buried Drains	Filled/Undergrounding
	Potrero	PO	PO	300	4	Road Crossings - Culverts	Filled/Culvert Crossing
	Potrero	PO	PO	600	2	Drainage Preserved	Preserved
Santa Clara River	Potrero	PO	SC	400	7	Potrero Bridge - Northern Abutment Bank Liner	Filled/Bank Protection
	Potrero	PO	SC	350	3	Potrero Bridge	1000'+ Bridge/Abutment/Piers

Printing Date: 6/11/2008
 File: Potrero_2008.mxd
 Prepared By: CMP
 Coordinate System:
 NAD83 / California zone 5
 Datum: North American 1983
 Illustrative purposes only.



PRE-PROJECT
 Converted to Buried, Perm CDFG (4ac) CDFG/ACOE (.03ac)
 Drainage Modified, Perm CDFG (3.8ac) CDFG/ACOE (22.4ac)
 Road Crossings-Culverts/Bridges, Perm CDFG (.02ac) CDFG/ACOE (7.2ac)
 Drainage Preserved, CDFG (.03ac) CDFG/ACOE (8.3ac)

Tributary	Planning Area	Planning Area Code	Watershed Code	Series	Project #	RMDP Component	Work Type	Pre-Project Drainage Jurisdiction ²		Drainages Modified ³		Drainages Converted to Buried Drains		Drainages Preserved		Road Crossings - Bridges - Total		Road Crossings - Culverts - Total		Post-Project Drainage Jurisdiction	Net Newly Created Jurisdiction	Bank Stabilization		Grade Control Structures
								(Feet)	(Acres)	(Feet)	(Acres)	(Feet)	(Acres)	(Feet)	(Acres)	(Qty)	(Acres)	(Qty)	(Acres)			(Feet)	(Feet)	
Potrero Canyon	Potrero	PO	PO	100	3	Modified: Bank Stabilization	Re-Engineered/Bank Stab		19,095	29.3												16,420	16,217	
	Potrero	PO	PO	150	4	Modified: Grade Control Structures	Re-Engineered/Grade Stab																	98
	Potrero	PO	PO	200	4	Drainages Converted to Buried Drains	Filled/Undergrounding				10,918	7.6												
	Potrero	PO	PO	300	4	Road Crossings - Culverts	Filled/Culvert Crossing	39,693	42.2					0	0.1	5	0.0							
	Potrero	PO	PO	650	4	Drainage Revegetation	Revegetation						9,679	5.2						27.3	-14.9			



POST-PROJECT
 Grade Control Structure
 Bank Stabilization
 Temporary Impact
 Post-Project Drainage Jurisdiction
 Road Crossings-Culverts/Bridges

Salt Creek

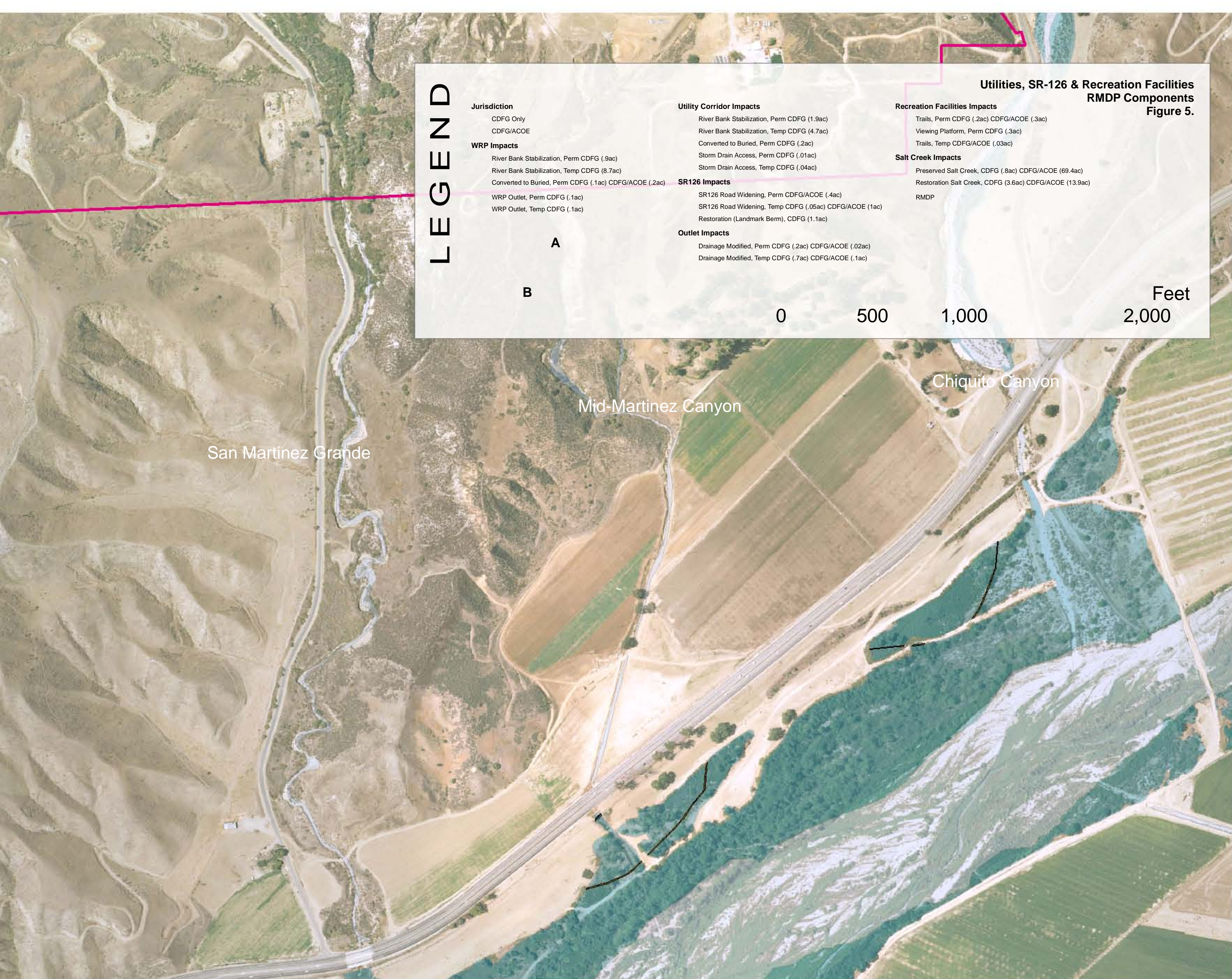
B

LEGEND

Jurisdiction CDFG Only CDFG/ACOE	Utility Corridor Impacts River Bank Stabilization, Perm CDFG (1.9ac) River Bank Stabilization, Temp CDFG (4.7ac) Converted to Buried, Perm CDFG (2ac) Storm Drain Access, Perm CDFG (0.04ac) Storm Drain Access, Temp CDFG (0.04ac)	Recreation Facilities Impacts Trails, Perm CDFG (2ac) CDFG/ACOE (3ac) Viewing Platform, Perm CDFG (3ac) Trails, Temp CDFG/ACOE (0.03ac)	Utilities, SR-126 & Recreation Facilities RMDP Components Figure 5.
WRP Impacts River Bank Stabilization, Perm CDFG (8.9ac) River Bank Stabilization, Temp CDFG (8.7ac) Converted to Buried, Perm CDFG (1.1ac) CDFG/ACOE (2ac) WRP Outlet, Perm CDFG (1.1ac) WRP Outlet, Temp CDFG (1.1ac)	SR126 Impacts SR126 Road Widening, Perm CDFG/ACOE (4.4ac) SR126 Road Widening, Temp CDFG (0.05ac) CDFG/ACOE (1ac) Restoration (Landmark Berm), CDFG (1.1ac)	Salt Creek Impacts Preserved Salt Creek, CDFG (8.8ac) CDFG/ACOE (89.4ac) Restoration Salt Creek, CDFG (3.8ac) CDFG/ACOE (13.9ac) RMDP	
	Outlet Impacts Drainage Modified, Perm CDFG (2ac) CDFG/ACOE (0.02ac) Drainage Modified, Temp CDFG (7ac) CDFG/ACOE (1.1ac)		

A

B



SR-126 at Castaic Creek Bridge Widening

A



PROJECT IDENTIFICATION CHART

Tributary	Planning Area	Planning Area Code	Watershed Code	Series	Project #	RMDP Component	Work Type
Chiquito Canyon	SR - 126	SR126	CH	300		SR 126 Widening @ Chiquito Canyon	Temp / Perm riparian impact
	Trails	TR	CH	500		Bike/Equestrian Trail Crossing @ Chiquito	Temp / Perm riparian impact
	Utility Corridor	UTIL	CH	500		Chiquito @ Hwy 126 Sewer & Water Lines	Utility Crossing
San Martinez Grande	SR - 126	SR126	SMG	200		SR 126 Widening @ San Martinez Grande	Temp / Perm riparian impact
	Trails	TR	SMG	500		Bike/Equestrian Trail crossing @ San Martinez	Temp / Perm riparian impact
	Utility Corridor	UTIL	SMG	500		Sewer & Water Lines across San Martinez	Temp riparian impact
Salt Creek Canyon	Salt Creek	SALT	SALT	100		Modified: Bank Stabilization	Re-Engineered/Bank Stab
	Salt Creek	SALT	SALT	600		Drainage Preserved	Preserved
	Salt Creek	SALT	SALT	625		Enhancement / Restoration	Enhancement / Restoration
Santa Clara River	Trails	TR	SC	500		Trail (portion east of WRP)	Temp / Perm riparian impact
	Utility Corridor	UTIL	SC	400		Chiquito to San Martinez Toe Protection - Utility	Filled/Bank Protection
	Utility Corridor	UTIL	SC	400		East of WRP Toe Protection - Utility	Filled/Bank Protection
	Utility Corridor	UTIL	SC	500		Viewing Platforms	Elevated Platform Structure
	Utility Corridor	UTIL	SC	500		Landmark Berm at Mouth of Chiquito Canyon	River/Creek Creation
	WRP	WRP	SC	400		Storm Drain Access	Temp / Perm riparian impact
Castaic Creek	WRP	WRP	SC	500		Waste Water Reclamation Plant Bank Liner	Filled/Bank Protection
	WRP	WRP	SC	500		Waste Water Reclamation Plant Outfall	Temp / Perm riparian impact
	SR - 126	SR126	CC	350		SR 126 bridge widening @ Castaic Creek	Bridge Abutment/Piers
	Trails	TR	CC	500		Bike/Equestrian Trail crossing @ Castaic Creek	Bridge Abutment/Piers
Utility Corridor	UTIL	CC	500		Castaic @ Hwy 126 Sewer lines	Utility Crossing	
Utility Corridor	UTIL	CC	500		Castaic @ Hwy 126 Water lines	Utility Crossing	

Printing Date: 8/11/2008
 File: SR126UtilCor_2008.mxd
 Prepared By: GMR
 Coordinate System:
 NAD83 / California zone 6
 Datum: North American 1983
 Illustrative purposes only

RMDP COMPONENTS PROJECT IDENTIFICATION CHART

- | | | | |
|------------|--|------------|--|
| 100 Series | Modified Drainage - Re-engineered Bank Stabilization | 500 Series | Trails, Viewing Platforms, Utility Crossings, Public Facilities, Other |
| 150 Series | Modified Drainage - Re-engineered Grade Control Structures | 600 Series | Preserved Drainage |
| 200 Series | Drainages Converted to Buried StormDrains | 625 Series | Enhancement / Restoration Activity |
| 300 Series | Drainage Filled for Road Crossing Culvert | 650 Series | Revegetation Area |
| 350 Series | Drainage Impacted for Road Crossing Bridge Abutment/Pie | 675 Series | Jurisdictional Creation Area |
| 400 Series | River Bank Protection | | |

Tributary	Planning Area	Planning Area Code	Watershed Code	Series	Project #	RMDP Component	Work Type	Pre-Project Drainage Jurisdiction2	
								(Feet)	(Acres)
Chiquito Canyon	Homestead	HS	CH	100	1	Modified: Bank Stabilization	Re-Engineered/Bank Stab	12,059	18.3
	Homestead	HS	CH	150	1	Modified: Grade Control Structures	Re-Engineered/Grade Stab		
	Homestead	HS	CH	200	1	Drainages Converted to Buried Drains	Filled/Undergrounding		
	Homestead	HS	CH	300	1	Road Crossings - Culverts	Filled/Culvert Crossing		
	Homestead	HS	CH	600	1	Drainage Preserved	Preserved		
	SR - 126	SR126	CH	500	1	SR 126 Widening @ Chiquito	Temp / Perm riparian impact		
	Utility Corridor	UTIL	CH	500	10	Sewer & Water Lines	Utility Crossing		
	RecFacil	TR	CH	500		Bike/Equestrian Trail crossing	Temp / Perm riparian impact		
Homestead	HS	CH	650	1	Drainage Revegetation	Revegetation			
Lion Canyon	Mission	MI	LI	150	2	Modified: Grade Control Structures	Re-Engineered/Grade Stab	11,930	6.9
	Mission	MI	LI	200	2	Drainages Converted to Buried Drains	Filled/Undergrounding		
	Mission	MI	LI	300	2	Road Crossings - Culverts	Filled/Culvert Crossing		
	Mission	MI	LI	650	2	Drainage Revegetation	Revegetation		
Long Canyon	Homestead	HS	LO	100	2	Modified: Bank Stabilization	Re-Engineered/Bank Stab	10,579	5.7
	Homestead	HS	LO	150	3	Modified: Grade Control Structures	Re-Engineered/Grade Stab		
	Homestead	HS	LO	200	3	Drainages Converted to Buried Drains	Filled/Undergrounding		
	Homestead	HS	LO	300	3	Road Crossings - Culverts	Filled/Culvert Crossing		
	Homestead	HS	LO	650	3	Drainage Revegetation	Revegetation		
Potrero Canyon	Potrero	PO	PO	100	3	Modified: Bank Stabilization	Re-Engineered/Bank Stab	39,693	42.2
	Potrero	PO	PO	150	4	Modified: Grade Control Structures	Re-Engineered/Grade Stab		
	Potrero	PO	PO	200	4	Drainages Converted to Buried Drains	Filled/Undergrounding		
	Potrero	PO	PO	300	4	Road Crossings - Culverts	Filled/Culvert Crossing		
	Potrero	PO	PO	600	2	Drainage Preserved	Preserved		
	Potrero	PO	PO	625	3	Potrero Valley - north end of canyon	Enhancement / Restoration		
Potrero	PO	PO	650	4	Drainage Revegetation	Revegetation			
San Martinez Grande Canyon	Homestead	HS	SMG	100	4	Modified: Bank Stabilization	Re-Engineered/Bank Stab	5,170	2.6
	Homestead	HS	SMG	150	5	Modified: Grade Control Structures	Re-Engineered/Grade Stab		
	Homestead	HS	SMG	300	5	Road Crossings - Culverts	Filled/Culvert Crossing		
	Homestead	HS	SMG	600	3	Drainage Preserved	Preserved		
	Utility Corridor	UTIL	SMG	500		Sewer & Water Lines along SR126	Utility Crossing		
	SR - 126	SR126	SMG	500		SR 126 widening at San Martinez	Temp / Perm riparian impact		
	RecFacil	TR	SMG	500		Bike/Equestrian Trail crossing	Temp / Perm riparian impact		
	Homestead	HS	SMG	650	5	Drainage Revegetation	Revegetation		

RMDP COMPONENTS PROJECT IDENTIFICATION CHART

100 Series	Modified Drainage - Re-engineered Bank Stabilization	500 Series	Trails, Viewing Platforms, Utility Crossings, Public Facilities, Other
150 Series	Modified Drainage - Re-engineered Grade Control Structures	600 Series	Preserved Drainage
200 Series	Drainages Converted to Buried Storm Drains	625 Series	Enhancement / Restoration Activity
300 Series	Drainage Filled for Road Crossing Culvert	650 Series	Revegetation Area
350 Series	Drainage Impacted for Road Crossing Bridge Abutment/Pier	675 Series	Jurisdictional Creation Area
400 Series	River Bank Protection		

Tributary	Planning Area	Planning Area Code	Watershed Code	Series	Project #	RMDP Component	Work Type	Pre-Project Drainage Jurisdiction2	
								(Feet)	(Acres)
Agricultural Ditch2	Landmark	LM	AG	100	5	Modified: Bank Stabilization	Re-Engineered/Bank Stab	1,848	1.8
	Landmark	LM	AG	200	5	Drainages Converted to Buried Drains	Filled/Undergrounding		
	Landmark	LM	AG	600	4	Drainage Preserved	Preserved		
	Landmark	LM	AG	650	6	Drainage Revegetation	Revegetation		
Ayers Canyon3	Homestead	HS	AY	150	6	Drainage Modified - 143'	Associated with Culvert	2,464	2.6
	Homestead	HS	AY	300	6	Road Crossings - Culverts	Filled/Culvert Crossing		
	Homestead	HS	AY	600	5	Drainage Preserved	Preserved		
Dead-End Canyon	Mission	MI	DE	200	6	Drainages Converted to Buried Drains	Filled/Undergrounding	1,931	1.3
Exxon Canyon	Mission	MI	EX	200	7	Drainages Converted to Buried Drains	Filled/Undergrounding	3,542	1.2
	Mission	MI	EX	600	6	Drainage Preserved	Preserved		
Homestead Canyon	Homestead	HS	HS	200	8	Drainages Converted to Buried Drains	Filled/Undergrounding	609	0.6
Humble Canyon	Homestead	HS	HU	200	9	Drainages Converted to Buried Drains	Filled/Undergrounding	5,538	1.9
	Homestead	HS	HU	600	7	Drainage Preserved	Preserved		
Middle Canyon	Mission	MI	MI	200	10	Drainages Converted to Buried Drains	Filled/Undergrounding	7,586	7.8
	Mission	MI	MI	600	8	Drainage Preserved	Preserved		
Mid-Martinez Canyon4	Homestead	HS	MMC	150	7	Drainage Modified - 22'	South of SR126 Culvert area	4,813	2.4
	Homestead	HS	MMC	200	11	Drainages Converted to Buried Drains	Filled/Undergrounding		
	Homestead	HS	MMC	600	9	Drainage Preserved	Preserved		
Off-Haul Canyon	Homestead	HS	OH	200	12	Drainages Converted to Buried Drains	Filled/Undergrounding	8,778	5.8
	Homestead	HS	OH	600	10	Drainage Preserved	Preserved		
Salt Creek Canyon5	Salt Creek	SC	SALT	100	6	Modified: Bank Stabilization	Re-Engineered/Bank Stab	108,760	91.0
	Salt Creek	SC	SALT	600	11	Drainage Preserved	Preserved		
	Salt Creek	SC	SALT	625	1	Enhancement / Restoration	Enhancement / Restoration		
Magic Mountain Canyon	Mission	MI	MM	200	13	Drainages Converted to Buried Drains	Filled/Undergrounding	6,111	6.4
Unnamed Entrada 1	Mission	MI	UN1	200	14	Drainages Converted to Buried Drains	Filled/Undergrounding	4,647	0.3
Unnamed Entrada 2	Mission	MI	UN2	200	15	Drainages Converted to Buried Drains	Filled/Undergrounding	416	0.5
Unnamed Canyon A	Homestead	HS	UNA	600	12	Drainage Preserved	Preserved	1,293	0.8
Unnamed Canyon B	Homestead	HS	UNB	200	16	Drainages Converted to Buried Drains	Filled/Undergrounding	1,572	0.7
	Homestead	HS	UNB	600	13	Drainage Preserved	Preserved		
Unnamed Canyon C	Homestead	HS	UNC	200	17	Drainages Converted to Buried Drains	Filled/Undergrounding	1,271	0.7
	Homestead	HS	UNC	600	14	Drainage Preserved	Preserved		
Unnamed Canyon D	Mission	MI	UND	200	18	Drainages Converted to Buried Drains	Filled/Undergrounding	1,492	0.8
	Mission	MI	UND	600	15	Drainage Preserved	Preserved		
S a	Landmark	LM	SC	400	1	Landmark Bank Liner @ SC River	Filled/Bank Protection		
	Landmark	LM	SC	400	2	Landmark Bank Liner @ Chiquito Confluence	Filled/Bank Protection		
	Landmark	LM	SC	400	3	Onion Field Bank Liner	Filled/Bank Protection		
	Landmark	LM	SC	350	1	Long Canyon Bridge 1000'+ Bridge over Sant	Bridge Abutment/Piers		
	Landmark	LM	SC	500	1	Viewing Platform @ Castaic confluence	Elevated Platform Structure		
	Landmark	LM	SC	650	7	Castaic Creek Confluence - North Bank	Buffer/Riparian Revegetation		
	Landmark	LM	SC	650	8	East of Long Canyon Bridge - North Bank	Buffer/Riparian Revegetation		
	Landmark	LM	SC	650	9	Onion Field - South Bank	Buffer/Riparian Revegetation		
	Landmark	LM	SC	675	1	Castaic Creek Confluence - North Bank	River/Creek Creation		
	Landmark	LM	SC	675	2	East & West of Long Canyon Bridge - North E	River/Creek Creation		
	Landmark	LM	SC	675	3	Onion Field - South Bank	River/Creek Creation		
	Landmark	LM	SC	500	2	Haul Route W - Landmark Borrow Site	Haul Route		
	Landmark	LM	SC	500	3	Haul Route E - Landmark Borrow Site (Long C	Haul Route		
	Mission	MI	SC	400	4	Commerce Center Bridge - Southern Abutme	Filled/Bank Protection		

RMDP COMPONENTS PROJECT IDENTIFICATION CHART

100 Series	Modified Drainage - Re-engineered Bank Stabilization	500 Series	Trails, Viewing Platforms, Utility Crossings, Public Facilities, Other
150 Series	Modified Drainage - Re-engineered Grade Control Structures	600 Series	Preserved Drainage
200 Series	Drainages Converted to Buried Storm Drains	625 Series	Enhancement / Restoration Activity
300 Series	Drainage Filled for Road Crossing Culvert	650 Series	Revegetation Area
350 Series	Drainage Impacted for Road Crossing Bridge Abutment/Pier	675 Series	Jurisdictional Creation Area
400 Series	River Bank Protection		

Tributary	Planning Area	Planning Area Code	Watershed Code	Series	Project #	RMDP Component	Work Type	Pre-Project Drainage Jurisdiction2	
								(Feet)	(Acres)
n t a C l i a r ~	Mission	MI	SC	400	5	Regional Storm Water Basin Bank Liner	Filled/Bank Protection		
	Mission	MI	SC	350	2	Commerce Center Bridge 1000'+ Bridge over	Bridge Abutment/Piers		
	Mission	MI	SC	650	10	Commerce Center Bridge - South Bank	Filled/Bank Protection		
	Mission	MI	SC	400	6	Regional Storm Water Basin Bank Liner	Filled/Bank Protection		
	Mission	MI	SC	675	4	Commerce Center Bridge - South Bank	River/Creek Creation		
	Mission	MI	SC	675	5	Regional Storm Water Basin Bank Liner	River/Creek Creation		
	Mission	MI	MI	625	2	Middle Canyon - west of seep	Enhancement / Restoration		

RMDP COMPONENTS PROJECT IDENTIFICATION CHART

- 100 Series Modified Drainage - Re-engineered Bank Stabilization
- 150 Series Modified Drainage - Re-engineered Grade Control Structures
- 200 Series Drainages Converted to Buried Storm Drains
- 300 Series Drainage Filled for Road Crossing Culvert
- 350 Series Drainage Impacted for Road Crossing Bridge Abutment/Pier
- 400 Series River Bank Protection
- 500 Series Trails, Viewing Platforms, Utility Crossings, Public Facilities, Other
- 600 Series Preserved Drainage
- 625 Series Enhancement / Restoration Activity
- 650 Series Revegetation Area
- 675 Series Jurisdictional Creation Area

Tributary	Planning Area	Planning Area Code	Watershed Code	Series	Project #	RMDP Component	Work Type	Pre-Project Drainage Jurisdiction2	
								(Feet)	(Acres)
R i v e r	Potrero	PO	SC	400	7	Potrero Bridge - Northern Abutment Bank Lin	Filled/Bank Protection		
	Potrero	PO	SC	350	3	Potrero Bridge 1000'+ Bridge over Santa Clar	Bridge Abutment/Piers		
	Potrero	PO	SC	675	6	Potrero Bridge - North Bank	River/Creek Creation		
	Potrero	PO	SC	500	4	Haul Route - Potrero	Haul Route		
	Potrero	PO	SC	500	5	Viewing Platform near mouth of Potrero	Elevated Platform Structure		
	Potrero	PO	SC	650	11	Potrero Bridge - North Bank	Buffer/Riparian Revegetation		
	Potrero	PO	SC	650	12	West of Potero Bridge	Buffer/Riparian Revegetation		
	Potrero	PO	SC	675	7	West of Potero Bridge	River/Creek Creation		
	Utility Corridor	UTIL	SC	400	8	Chiquito to San Martinez Toe Protection - Util	Filled/Bank Protection		
	Utility Corridor	UTIL	SC	400	9	East of WRP Toe Protection - Utility	Filled/Bank Protection		
	Utility Corridor	UTIL	SC	500	6	Viewing Platform between Chiquito & San Ma	Elevated Platform Structure		
	Utility Corridor	UTIL	SC	650	13	Open area between Chiquito & San Martinez	Buffer/Riparian Revegetation		
	Utility Corridor	UTIL	SC	675	8	Mouth of Chiquito Canyon	River/Creek Creation		
	Utility Corridor	UTIL	SC	625	4	Mouth of Chiquito Canyon	Enhancement / Restoration		
	WRP	WRP	SC	400	10	Waste Water Reclamation Plant Bank Liner	Filled/Bank Protection		
	WRP	WRP	SC	500		Waste Water Reclamation Plant Outfall	Pilot Channel & access path		
WRP	WRP	SC	675	9	WRP - North Bank	River/Creek Creation			
WRP	WRP	SC	650	14	WRP - North Bank	Buffer/Riparian Revegetation			
Castaic Creek	Landmark	LM	CC	400	11	Landmark Bank Liner @ Castaic Creek	Filled/Bank Protection		
	Landmark	LM	CC	650	15	Castaic Creek Bank	Buffer/Riparian Revegetation		
	Landmark	LM	CC	675	10	Castaic Creek Bank	River/Creek Creation		
	SR - 126	SR126	CC	350	4	SR 126 bridge widening @ Castaic Creek	Bridge Abutment/Piers		
	SR - 126	SR126	CC	500	7	Bike/Equestrian Trail crossing @ Castaic Cre	Bridge Abutment/Piers		
	Utility Corridor	UTIL	CC	500	8	Castaic @ Hwy 126 Sewer lines	Utility Crossing		
Utility Corridor	UTIL	CC	500	9	Castaic @ Hwy 126 Water lines	Utility Crossing			

RMDP COMPONENTS PROJECT IDENTIFICATION CHART

- | | | | |
|------------|--|------------|--|
| 100 Series | Modified Drainage - Re-engineered Bank Stabilization | 500 Series | Trails, Viewing Platforms, Utility Crossings, Public Facilities, Other |
| 150 Series | Modified Drainage - Re-engineered Grade Control Structures | 600 Series | Preserved Drainage |
| 200 Series | Drainages Converted to Buried StormDrains | 625 Series | Enhancement / Restoration Activity |
| 300 Series | Drainage Filled for Road Crossing Culvert | 650 Series | Revegetation Area |
| 350 Series | Drainage Impacted for Road Crossing Bridge Abutment/Pile | 675 Series | Jurisdictional Creation Area |
| 400 Series | River Bank Protection | | |

Tributary	Planning Area	Planning Area Code	Watershed Code	Series	Project #	RMDP Component	Work Type	Pre-Project Drainage Jurisdiction2	
								(Feet)	(Acres)

	Pre-Project Jurisdictional Acreage	Post-Project Jurisdictional Acreage
Summary of Tributary Impacts & Creation Areas	202.3	188.4
Summary of River Impacts & Creation Areas	758.0	800.9
RMDP Total	960.3	989.3
Net Newly Created Jurisdiction	29.0	

RMDP COMPONENTS PROJECT IDENTIFICATION CHART

- 100 Series Modified Drainage - Re-engineered Bank Stabilization
- 150 Series Modified Drainage - Re-engineered Grade Control Structure
- 200 Series Drainages Converted to Buried StormDrains
- 300 Series Drainage Filled for Road Crossing Culvert
- 350 Series Drainage Impacted for Road Crossing Bridge Abutment/Pie
- 400 Series River Bank Protection

Tributary	Planning Area	Planning Area Code	Watershed Code	Series	Drainages Modified ³		Drainages Converted to Buried Drains		Drainages Preserved		Road Crossings - Bridges		Road Crossings - Culverts		Post-Project Drainage Jurisdiction (Acres)	Net Newly Created Jurisdiction (Acres)	Bank Stabilization		Grade Control Structures (Qty)
					Impacted (Feet)	Total (Acres)	(Feet)	(Acres)	(Feet)	(Acres)	(Qty)	(Acres)	(Qty)	(Acres)			West (Feet)	East (Feet)	
Chiquito Canyon	Homestead	HS	CH	100	8,612	16.0											7,411	7,280	
	Homestead	HS	CH	150															11
	Homestead	HS	CH	200			2,549	1.0											
	Homestead	HS	CH	300							0	0.1	3	0.9					
	Homestead	HS	CH	600					898	0.3									
	SR - 126	SR126	CH	500															
	Utility Corridor	UTIL	CH	500															
	RecFacil	TR	CH	500															
	Homestead	HS	CH	650										16.4	-1.9				
Lion Canyon	Mission	MI	LI	150	5,614	3.0													28
	Mission	MI	LI	200			6,316	3.4											
	Mission	MI	LI	300								1	0.4						
	Mission	MI	LI	650											3.7	-3.1			
Long Canyon	Homestead	HS	LO	100	9,618	4.8											8,833	8,815	
	Homestead	HS	LO	150															44
	Homestead	HS	LO	200			961	0.7											
	Homestead	HS	LO	300								3	0.3						
	Homestead	HS	LO	650											10.7	5.0			
Potrero Canyon	Potrero	PO	PO	100	19,095	29.3											16,420	16,217	
	Potrero	PO	PO	150															98
	Potrero	PO	PO	200			10,918	7.6											
	Potrero	PO	PO	300							0	0.1	5	0.0					
	Potrero	PO	PO	600					9,679	5.2									
	Potrero	PO	PO	625															
	Potrero	PO	650											27.3	-14.9				
San Martinez Grande Canyon	Homestead	HS	SMG	100	5,126	2.4											4,279	4,287	
	Homestead	HS	SMG	150															8
	Homestead	HS	SMG	300							0	0.1	2	0.0					
	Homestead	HS	SMG	600					43	0.0									
	Utility Corridor	UTIL	SMG	500															
	SR - 126	SR126	SMG	500															
	RecFacil	TR	SMG	500															
	Homestead	HS	SMG	650											5.8	3.3			

RMDP COMPONENTS PROJECT IDENTIFICATION CHART

- 100 Series Modified Drainage - Re-engineered Bank Stabilization
- 150 Series Modified Drainage - Re-engineered Grade Control Structure
- 200 Series Drainages Converted to Buried StormDrains
- 300 Series Drainage Filled for Road Crossing Culvert
- 350 Series Drainage Impacted for Road Crossing Bridge Abutment/Pie
- 400 Series River Bank Protection

Tributary	Planning Area	Planning Area Code	Watershed Code	Series	Drainages Modified ³		Drainages Converted to Buried Drains		Drainages Preserved		Road Crossings - Bridges		Road Crossings - Culverts		Post-Project Drainage Jurisdiction	Net Newly Created Jurisdiction	Bank Stabilization		Grade Control Structures			
					Impacted	Total	(Feet)	(Acres)	(Feet)	(Acres)	(Feet)	(Acres)	(Qty)	(Acres)			(Qty)	(Acres)		(Acres)	West	East
					(Feet)	(Acres)	(Feet)	(Acres)	(Feet)	(Acres)	(Qty)	(Acres)	(Qty)	(Acres)			(Acres)	(Feet)		(Feet)	(Qty)	
Agricultural Ditch2	Landmark	LM	AG	100	344	0.3																
	Landmark	LM	AG	200			1,479	1.4														
	Landmark	LM	AG	600					25	0.2												
	Landmark	LM	AG	650										0.5	-1.4							
Ayers Canyon3	Homestead	HS	AY	150	154	0.0																
	Homestead	HS	AY	300							0	0.2	1	0.0								
	Homestead	HS	AY	600					2,311	2.4					2.7	0.1						
Dead-End Canyon	Mission	MI	DE	200			1,931	1.3												-1.3		
Exxon Canyon	Mission	MI	EX	200			1,276	0.3														
	Mission	MI	EX	600					2,265	0.9					0.9	-0.3						
Homestead Canyon	Homestead	HS	HS	200			609	0.6												-0.6		
Humble Canyon	Homestead	HS	HU	200			421	0.1														
	Homestead	HS	HU	600					5,116	1.8					1.8	-0.1						
Middle Canyon	Mission	MI	MI	200			7,439	5.6														
	Mission	MI	MI	600					148	2.2					2.2	-5.6						
Mid-Martinez Canyon4	Homestead	HS	MMC	150	22	0.0																
	Homestead	HS	MMC	200			4,541	2.1														
	Homestead	HS	MMC	600					250	0.3					0.3	-2.1						
Off-Haul Canyon	Homestead	HS	OH	200			7,593	5.4														
	Homestead	HS	OH	600					1,185	0.3					0.3	-5.4						
Salt Creek Canyon5	Salt Creek	SC	SALT	100	7,290	6.9																
	Salt Creek	SC	SALT	600					101,470	84.1												
	Salt Creek	SC	SALT	625											114.1	23.1						
Magic Mountain Canyon	Mission	MI	MM	200			6,111	6.4												-6.4		
Unnamed Entrada 1	Mission	MI	UN1	200			4,647	0.3												-0.3		
Unnamed Entrada 2	Mission	MI	UN2	200			416	0.5												-0.5		
Unnamed Canyon A	Homestead	HS	UNA	600					1,293	0.8					0.8							
Unnamed Canyon B	Homestead	HS	UNB	200			1,004	0.5														
	Homestead	HS	UNB	600					568	0.3					0.3	-0.5						
Unnamed Canyon C	Homestead	HS	UNC	200			402	0.2														
	Homestead	HS	UNC	600					869	0.5					0.5	-0.2						
Unnamed Canyon D	Mission	MI	UND	200			1,232	0.7														
	Mission	MI	UND	600					260	0.1					0.1	-0.7						
S a	Landmark	LM	SC	400																		
	Landmark	LM	SC	400																		
	Landmark	LM	SC	400																		
	Landmark	LM	SC	350																		
	Landmark	LM	SC	500																		
	Landmark	LM	SC	650																		
	Landmark	LM	SC	650																		
	Landmark	LM	SC	650																		
	Landmark	LM	SC	675																		
	Landmark	LM	SC	675																		
	Landmark	LM	SC	675																		
	Landmark	LM	SC	500																		
	Landmark	LM	SC	500																		
	Landmark	MI	SC	400																		

RMDP COMPONENTS PROJECT IDENTIFICATION CHART

- 100 Series Modified Drainage - Re-engineered Bank Stabilization
- 150 Series Modified Drainage - Re-engineered Grade Control Structures
- 200 Series Drainages Converted to Buried Storm Drains
- 300 Series Drainage Filled for Road Crossing Culvert
- 350 Series Drainage Impacted for Road Crossing Bridge Abutment/Pier
- 400 Series River Bank Protection

Tributary	Planning Area	Planning Area Code	Watershed Code	Series	Drainages Modified ³		Drainages Converted to Buried Drains	Drainages Preserved	Road Crossings - Bridges		Road Crossings - Culverts		Post-Project Drainage Jurisdiction	Net Newly Created Jurisdiction	Bank Stabilization		Grade Control Structures
					Impacted	Total			Total	Total	West	East					
					(Feet)	(Acres)	(Feet)	(Acres)	(Feet)	(Acres)	(Qty)	(Acres)	(Acres)	(Acres)	(Feet)	(Feet)	(Qty)
n t a C l a r ~	Mission	MI	SC	400													
	Mission	MI	SC	350													
	Mission	MI	SC	650													
	Mission	MI	SC	400													
	Mission	MI	SC	675													
	Mission	MI	SC	675													
	Mission	MI	MI	625													

RMDP COMPONENTS PROJECT IDENTIFICATION CHART

- 100 Series Modified Drainage - Re-engineered Bank Stabilization
- 150 Series Modified Drainage - Re-engineered Grade Control Structure
- 200 Series Drainages Converted to Buried StormDrains
- 300 Series Drainage Filled for Road Crossing Culvert
- 350 Series Drainage Impacted for Road Crossing Bridge Abutment/Pier
- 400 Series River Bank Protection

Tributary	Planning Area	Planning Area Code	Watershed Code	Series	Drainages Modified ³		Drainages Converted to Buried Drains		Drainages Preserved		Road Crossings - Bridges		Road Crossings - Culverts		Post-Project Drainage Jurisdiction	Net Newly Created Jurisdiction	Bank Stabilization		Grade Control Structures			
					Impacted	Total	(Feet)	(Acres)	(Feet)	(Acres)	(Feet)	(Acres)	(Qty)	(Acres)			(Qty)	(Acres)		(Acres)	West	East
					(Feet)	(Acres)	(Feet)	(Acres)	(Feet)	(Acres)	(Qty)	(Acres)	(Qty)	(Acres)			(Acres)	(Feet)		(Feet)	(Qty)	
R i v e r	Potrero	PO	SC	400																		
	Potrero	PO	SC	350																		
	Potrero	PO	SC	675																		
	Potrero	PO	SC	500																		
	Potrero	PO	SC	500																		
	Potrero	PO	SC	650																		
	Potrero	PO	SC	650																		
	Potrero	PO	SC	675																		
	Utility Corridor	UTIL	SC	400																		
	Utility Corridor	UTIL	SC	400																		
	Utility Corridor	UTIL	SC	500																		
	Utility Corridor	UTIL	SC	650																		
	Utility Corridor	UTIL	SC	675																		
	Utility Corridor	UTIL	SC	625																		
	WRP	WRP	SC	400																		
	WRP	WRP	SC	500																		
	WRP	WRP	SC	675																		
WRP	WRP	SC	650																			
Castaic Creek	Landmark	LM	CC	400																		
	Landmark	LM	CC	650																		
	Landmark	LM	CC	675																		
	SR - 126	SR126	CC	350																		
	SR - 126	SR126	CC	500																		
	Utility Corridor	UTIL	CC	500																		
	Utility Corridor	UTIL	CC	500																		

See Summary Below or RMDP Component Graphics for details of Project Impacts

RMDP COMPONENTS PROJECT IDENTIFICATION CHART

100 Series	Modified Drainage - Re-engineered Bank Stabilization
150 Series	Modified Drainage - Re-engineered Grade Control Structures
200 Series	Drainages Converted to Buried StormDrains
300 Series	Drainage Filled for Road Crossing Culvert
350 Series	Drainage Impacted for Road Crossing Bridge Abutment/Pier
400 Series	River Bank Protection

Tributary	Planning Area	Planning Area Code	Watershed Code	Series	Drainages Modified ³		Drainages Converted to Buried Drains		Drainages Preserved		Road Crossings - Bridges		Road Crossings - Culverts		Post-Project Drainage Jurisdiction	Net Newly Created Jurisdiction	Bank Stabilization		Grade Control Structures
					Impacted <i>(Feet)</i>	Total <i>(Acres)</i>	<i>(Feet)</i>	<i>(Acres)</i>	<i>(Feet)</i>	<i>(Acres)</i>	<i>(Qty)</i>	<i>(Acres)</i>	<i>(Qty)</i>	<i>(Acres)</i>			<i>(Feet)</i>	<i>(Feet)</i>	

Summary of Tributary Impacts & Creation Areas
Summary of River Impacts & Creation Areas
RMDP Total
Net Newly Created Jurisdiction