
**Bloom Biological, Inc., "Interim Report of Winter Surveys of Special-Status
Bird Species on Portions of Newhall Land and Farming Company Property
(Including Newhall Ranch), Los Angeles County, California"
(February 28, 2008)**

**INTERIM REPORT ON WINTER SURVEYS
OF SPECIAL-STATUS BIRD SPECIES
ON PORTIONS OF NEWHALL LAND AND FARMING COMPANY PROPERTY,
(INCLUDING NEWHALL RANCH)
LOS ANGELES COUNTY, CALIFORNIA**

Prepared for:

THE NEWHALL LAND & FARMING COMPANY
23823 Valencia Blvd.
Valencia, CA 91355

Prepared By:

Peter H. Bloom
&
Chris A. Niemela
BLOOM BIOLOGICAL, INC.
13611 Hewes Ave
Santa Ana, CA 92705



February 28, 2008

INTRODUCTION

Bloom Biological, Inc. is currently conducting extensive field surveys of all special-status, or sensitive, avian species, including raptors, on portions of Newhall Land and Farming Company property ("2008 Surveys"). The surveys, which began in November 2007 and will continue through February 29, 2008, are part of an ongoing effort to identify wintering avian species on Newhall Land's property west of Interstate 5 (including Newhall Ranch). This report summarizes the findings of the survey efforts to date.

It should be noted that Bloom Biological, Inc. also conducted avian surveys earlier last year, beginning in February 2007 and ending in June 2007 ("2007 Surveys"). As part of the 2007 Surveys, Bloom Biological, Inc. conducted focused surveys for least Bell's vireo (*Vireo bellii pusillus*) and southwestern willow flycatcher (*Empidonax traillii extimus*).

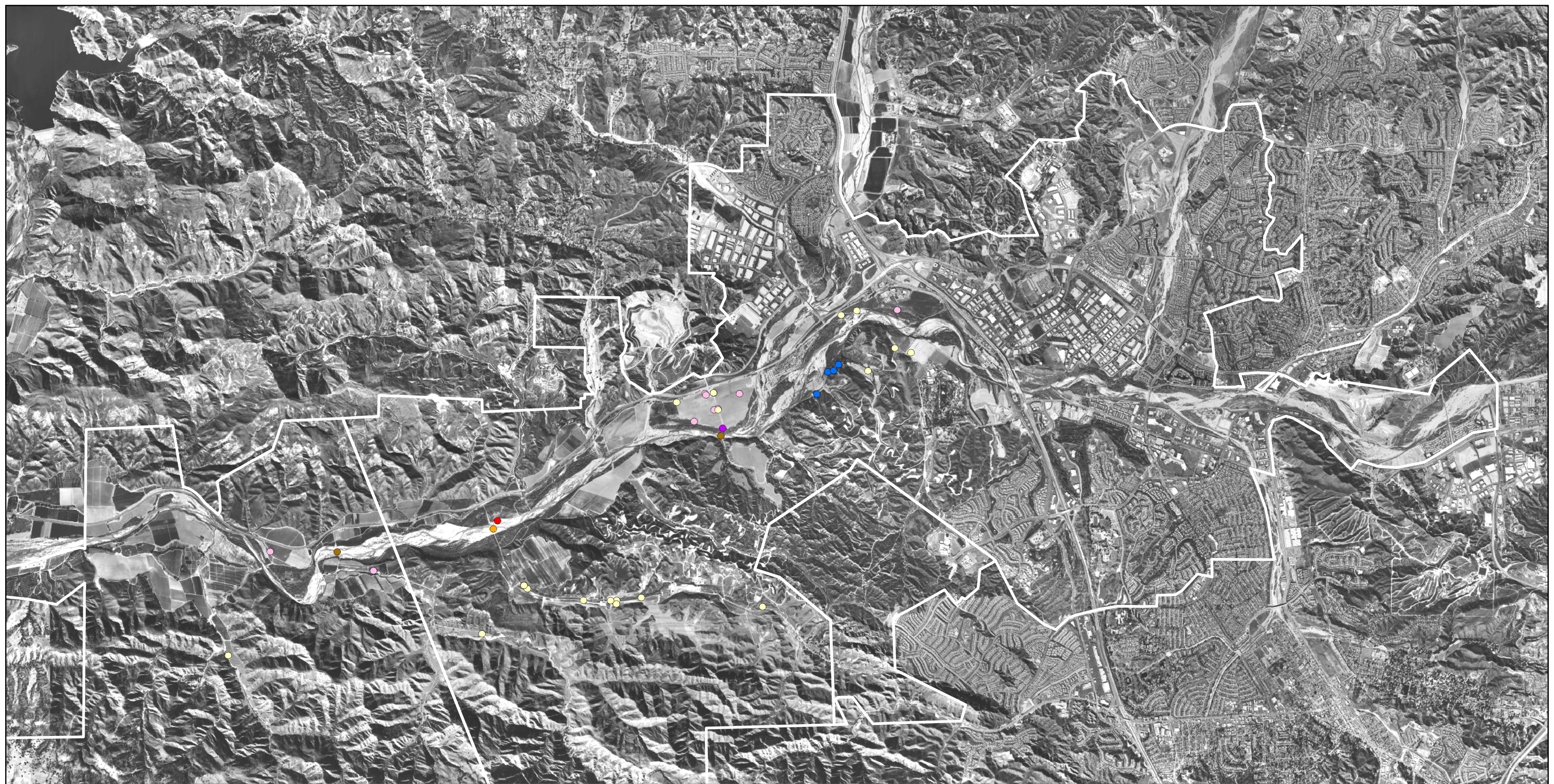
Consistent with the 2007 Surveys, the survey area consisted of land along the Santa Clara River, west of Interstate 5 to Las Brisas Bridge (a distance of 10 miles) as well as all lands within the Newhall Ranch property boundary, on both sides of State Highway 126 ("SR-126"); including lower Salt Creek, Potrero Canyon, and the upland habitat.

METHODOLOGY

Wintering bird surveys were conducted from November 2007 to the present. The surveys were conducted during daylight hours, as well as up to six hours after sunset, by walking and/or driving systematically along dirt roads, footpaths, streambeds, and canyon bottoms throughout the survey area. Special emphasis was placed on thoroughly surveying all agricultural and abandoned fields, at dusk and dark hours, for presence of burrowing owls. In addition, several nights were spent surveying and camping in selected oak woodlands, in an attempt to detect the presence of long-eared owls. GPS waypoint locations were recorded for all sensitive species locations. Although all birds detected were recorded, special emphasis was placed on finding those considered to be of special status by federal and state resource agencies and conservation organizations. Biologists Chris A. Niemela, Peter H. Bloom, Lee Jones, Karly Moore, and Jeff Kidd conducted all surveys.

RESULTS

Several bird species occurring on or in the vicinity of Newhall Land and Farming Company property have been classified as "special-status species," by one or more governmental agencies, or "sensitive," by non-governmental conservation organizations. In addition, there are several other bird species that have the potential of occurring on the site, however, have not been recorded. The bird species that occur or have the potential of occurring on the site are discussed below.



LEGEND

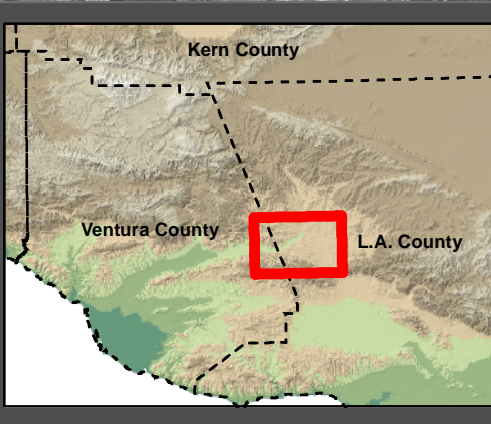
Newhall Land Property

- SPECIES OBSERVATIONS**
- American Bittern
 - Black-crowned Night-Heron
 - Horned Lark
 - Lawrence's Goldfinch
 - Loggerhead Shrike
 - Marsh Wren
 - Rufous-crowned Sparrow

Feet

0 2,000 4,000 8,000

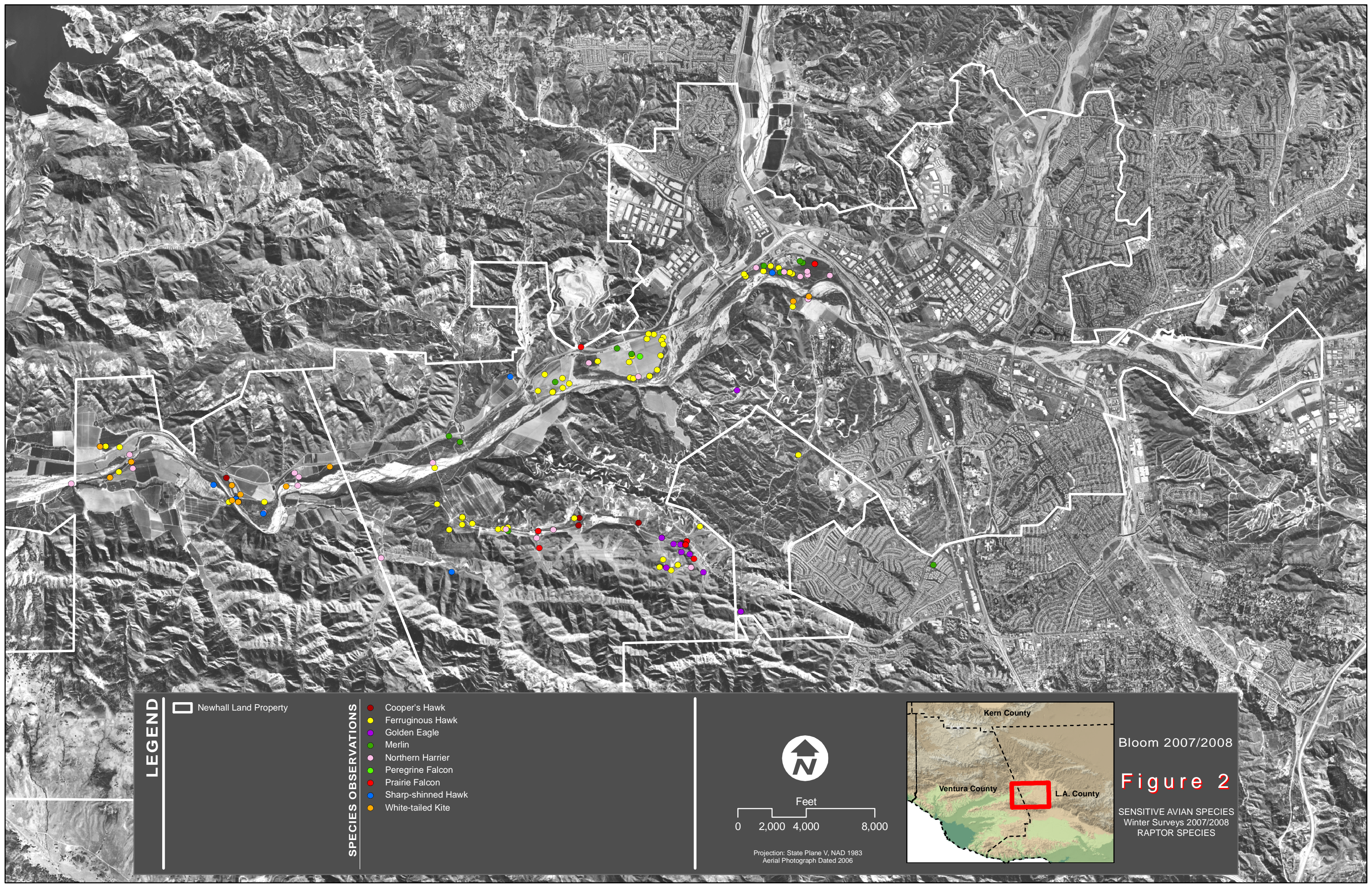
Projection: State Plane V, NAD 1983
Aerial Photograph Dated 2006



Bloom 2007/2008

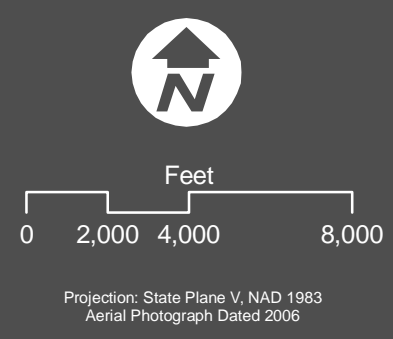
Figure 1

SENSITIVE AVIAN SPECIES
Winter Surveys 2007/2008
NON-RAPTOR SPECIES



LEGEND

- Newhall Land Property
- SPECIES OBSERVATIONS
- Cooper's Hawk
 - Ferruginous Hawk
 - Golden Eagle
 - Merlin
 - Northern Harrier
 - Peregrine Falcon
 - Prairie Falcon
 - Sharp-shinned Hawk
 - White-tailed Kite



Projection: State Plane V, NAD 1983
Aerial Photograph Dated 2006



Bloom 2007/2008
Figure 2
SENSITIVE AVIAN SPECIES
Winter Surveys 2007/2008
RAPTOR SPECIES

The locations of observed special-status avian species are depicted in Figures 1 and 2. It is important to note that some of the observations recorded in Figures 1 and 2 represent multiple observations of the same individuals within a special-status avian species. The dots on Figures 1 and 2 represent locations where the individuals were observed and are not necessarily an indication of the number of individuals occurring on site. All observations are listed in Appendix A.

Black-crowned Night-Heron

Observed

Nycticorax nycticorax

CONSERVATION STATUS: BLM Sensitive, IUCN Least Concern.

OCCURRENCE ON SITE: Several individuals were detected flying along the Santa Clara River near Wolcott at dusk. No roost or rookery (nesting colony) has been detected on or near the site.

California Condor

Not Observed

Gymnogyps californianus

CONSERVATION STATUS: Federally Endangered, California Endangered, California Fully Protected, California Department of Forestry and Fire Protection Sensitive, National Audubon Society Watch List, American Bird Conservancy Green List, U.S. Bird Conservation Watch List.

POTENTIAL TO OCCUR ON SITE: This species was re-introduced into the local mountains beginning in 1992 from a captive breeding program; part of the California Condor Recovery Program. This wide-ranging species nests on remote cliffs, but forages over hundreds of square miles, and is known to at least fly over the site (U.S. Fish and Wildlife Service and Ventana Wilderness Society).

White-tailed Kite

Observed

Elanus leucurus

CONSERVATION STATUS: California Fully Protected.

OCCURRENCE ON SITE: At least 2 individuals have been observed periodically at two different locations along the Santa Clara River. One individual occurs just upstream from Las Brisas Bridge and forages over agricultural and fallow fields on both sides of Hwy 126. The other individual is seen less frequently just west of the Ventura County line, and forages mainly within the river channel. One individual was seen on one occasion in the agricultural field near the rear ranch entrance gate by the Magic Mountain parking lot.

Northern Harrier

Observed

Circus cyaneus

CONSERVATION STATUS: California Species of Special Concern, 3rd Priority, IUCN Least Concern.

OCCURRENCE ON SITE: Several individuals were observed on several occasions hunting over agricultural fields and riparian scrub along the Santa Clara River and in agricultural fields and scrub habitats in Potrero Canyon. One individual was seen at lower Salt Creek.

Sharp-shinned Hawk**Observed*****Accipiter striatus***

STATUS: California Species of Special Concern¹, IUCN Least Concern.

OCCURRENCE ON SITE: Individuals were observed in several locations along the Santa Clara River, hunting in agricultural fields. One individual was observed in Salt Creek.

Cooper's Hawk**Observed*****Accipiter cooperii***

CONSERVATION STATUS: California Species of Special Concern¹, IUCN Least Concern.

OCCURRENCE ON SITE: Occurs commonly along the Santa Clara River, and in Potrero Canyon.

Swainson's Hawk**Not Observed*****Buteo swainsoni***

CONSERVATION STATUS: California Threatened, USFWS Bird of Conservation Concern, USDA Forest Service Sensitive, National Audubon Society Watch List, American Bird Conservancy Green List, U.S. Bird Conservation Watch List.

OCCURRENCE ON SITE: Winters in South America but may occur during migration.

Ferruginous Hawk**Observed*****Buteo regalis***

CONSERVATION STATUS: USFWS Bird of Conservation Concern, BLM Sensitive, California Species of Special Concern¹, IUCN LR, National Audubon Society Watch List.

OCCURRENCE ON SITE: Individuals observed every day in east alfalfa fields, Wolcott fields, and Potrero Canyon, and at other agricultural fields along the river. Seven to 12 different individuals occurred on the site during these surveys.

Golden Eagle**Observed*****Aquila chrysaetos***

CONSERVATION STATUS: USFWS Bird of Conservation Concern, BLM Sensitive, California Fully Protected, California Species of Special Concern¹, California Department of Forestry and Fire Protection Sensitive, IUCN Least Concern. Also protected under the Bald Eagle Act as amended to include Golden Eagle.

OCCURRENCE ON SITE: One pair was seen frequently in upper Potrero Canyon, often perched together on high-tension power towers and occasionally on lower wooden utility poles. One juvenile was seen on one occasion in the same area. This is likely a resident pair but no nest has been identified to date.

¹ On the original list of Species of Special Concern (1978) and/or the updated list (1992), but not on the most recent list (2005) that is in final review by CDFG but not yet officially published.

Merlin**Observed*****Falco columbarius***

CONSERVATION STATUS: California Species of Special Concern¹, IUCN Least Concern.

OCCURRENCE ON SITE: Several individuals observed on several occasions hunting over agricultural fields along Santa Clara River and in Potrero Canyon. An estimated 5-6 different individuals occurred on the site during these surveys hunting adjacent plowed fields.

Peregrine Falcon**Observed*****Falco peregrinus***

CONSERVATION STATUS: California Endangered, USFWS Bird of Conservation Concern, USDA Forest Service Sensitive, California Fully Protected, IUCN Least Concern. Formally Federally Endangered but delisted after recovery following ban on DDT use in U.S.

OCCURRENCE ON SITE: One individual observed on one occasion over Wolcott agricultural field.

Prairie Falcon**Observed*****Falco mexicanus***

CONSERVATION STATUS: USFWS Bird of Conservation Concern, California Species of Special Concern, IUCN Least Concern.

OCCURRENCE ON SITE: At least 2 different individuals were observed on several occasions in Potrero Canyon. Two other individuals were observed along the River on single occasions.

An estimated 4 different individuals occurred on the site during these surveys, hunting songbirds in adjacent and distant disked fields and barren hillsides.

Mountain Plover**Not Observed*****Charadrius montanus***

CONSERVATION STATUS: USFWS Bird of Conservation Concern, California Species of Special Concern, National Audubon Society Watch List, American Bird Conservancy Green List, U.S. Bird Conservation Watch List.

POTENTIAL TO OCCUR ON SITE: This species number was greatly reduced in the last half-century, but recently plowed fields provide ideal foraging habitat in winter and during migration for the few birds that may winter or migrate this close to the coast. The occurrence of this species over the site is plausible, however unlikely.

Long-billed Curlew**Not Observed*****Numenius americanus***

CONSERVATION STATUS: USFWS Bird of Conservation Concern California Species of Special Concern¹, IUCN Lower Risk/Near Threatened, National Audubon Society Watch List, American Bird Conservancy Green List.

POTENTIAL TO OCCUR ON SITE: Agricultural fields and irrigated pastures on the site provide suitable habitat for migrating and possibly wintering birds, but none were documented during the present survey.

Western Yellow-billed Cuckoo**Not Observed***Coccyzus americanus occidentalis*

CONSERVATION STATUS: California Endangered, Federal Candidate for Listing, USFWS Bird of Conservation Concern, USDA Forest Service Sensitive, IUCN Least Concern.

POTENTIAL TO OCCUR ON SITE: Not known to breed in the Santa Clara River drainage, but an occasional bird may appear on-site during migration.

Burrowing Owl**Not Observed***Athene cunicularia*

CONSERVATION STATUS: USFWS Bird of Conservation Concern, BLM Sensitive, California Species of Special Concern, IUCN Least Concern.

POTENTIAL TO OCCUR ON SITE: Although ranch hands have reported “ground owls,” it is probable that the species is now only an occasional winter visitor. It was not recorded during the present surveys despite repeated searches during the crepuscular hours when it is most active.

California Spotted Owl**Not Observed***Strix occidentalis occidentalis*

CONSERVATION STATUS: USFWS Bird of Conservation Concern, BLM Sensitive, USDA Forest Service Sensitive, California Species of Special Concern¹, IUCN Lower Risk/Near Threatened, National Audubon Society Watch List, American Bird Conservancy Green List, U.S. Bird Conservation Watch List.

POTENTIAL TO OCCUR ON SITE: Although it occurs in canyons both north and east of the site, dense-canopy woodland habitat is too patchy and sparse on and adjacent to the impact area or project site to support this species. Nocturnal surveys conducted from November through February did not detect this species.

Long-eared Owl**Not Observed***Asio otus*

CONSERVATION STATUS: California Species of Special Concern, IUCN Least Concern.

POTENTIAL TO OCCUR ON SITE: Good habitat for the species is present on the site, but the species was not detected during the present surveys.

Short-eared Owl**Not Observed***Asio flammeus*

CONSERVATION STATUS: California Species of Special Concern, IUCN Least Concern, National Audubon Society Watch List, American Bird Conservancy Green List (nesting), U.S. Bird Conservation Watch List.

POTENTIAL TO OCCUR ON SITE: This species is known to periodically occur on the site during the winter.

Costa's Hummingbird**Not Observed*****Calypte costae***

CONSERVATION STATUS: IUCN Least Concern, National Audubon Society Watch List, American Bird Conservancy Green List, U.S. Bird Conservation Watch List.

POTENTIAL TO OCCUR ON SITE: This species undoubtedly occurs as a migrant and may breed in sage scrub- and chaparral-covered hillsides south of site, but not observed during current survey period.

Rufous and Allen's Hummingbird**Observed*****Selasphorus rufus and sasin***

CONSERVATION STATUS: USFWS Bird of Conservation Concern (*rufus* only), IUCN Least Concern, National Audubon Society Watch List, American Bird Conservancy Green List. (*rufus* only), U.S. Bird Conservation Watch List.

OCCURRENCE ON SITE: One individual was observed along the river near the Ventura County line.

Nuttall's Woodpecker**Observed*****Picoides nuttallii***

CONSERVATION STATUS: IUCN Least Concern, National Audubon Society Watch List, American Bird Conservancy Green List, U.S. Bird Conservation Watch List.

OCCURRENCE ON SITE: This bird is a common resident in cottonwood and willow riparian habitat along the Santa Clara River and in coast live oak woodlands in adjoining canyons and uplands.

Willow Flycatcher, including Southwestern Willow Flycatcher**Not Observed*****Empidonax traillii (including extimus)***

CONSERVATION STATUS: Federally Endangered (*extimus* only), California Endangered (all subspecies that breed in the state), USDA Forest Service Sensitive, IUCN Least Concern, National Audubon Society Watch List, American Bird Conservancy Green List, U.S. Bird Conservation Watch List. Continues to decline in California.

OCCURRENCE ON SITE: This species does not winter in North America.

Loggerhead Shrike**Observed*****Lanius ludovicianus***

CONSERVATION STATUS: USFWS Bird of Conservation Concern, California Species of Special Concern, IUCN Least Concern.

OCCURRENCE ON SITE: This species is a year-round resident in the survey area. It was observed regularly in Potrero Canyon, Tapo Canyon, near Magic Mountain ranch gate, and Wolcott agricultural fields.

Least Bell's Vireo**Not Observed*****Vireo bellii pusillus***

CONSERVATION STATUS: California Endangered, USFWS Bird of Conservation Concern, IUCN Lower Risk/Near Threatened, National Audubon Society Watch List, and U.S. Bird Conservation Watch List.

OCCURRENCE ON SITE: This species does not winter in North America.

California Horned Lark **Observed**

Eremophila alpestris actia

CONSERVATION STATUS: California Species of Special Concern¹, IUCN Least Concern.

OCCURRENCE ON SITE: Large flocks (250-500) were observed in the Wolcott agricultural fields and east alfalfa field on several occasions, and smaller groups were observed at other locations along the River.

Purple Martin **Not Observed**

Progne subis

CONSERVATION STATUS: California Species of Special Concern, IUCN Least Concern.

POTENTIAL TO OCCUR ON SITE: This species is likely to occur as a migrant on rare occasions.

Bank Swallow **Not Observed**

Riparia riparia

CONSERVATION STATUS: California Threatened, IUCN Least Concern.

POTENTIAL TO OCCUR ON SITE: This species does not winter in North America. However, it has the potential to occur as an occasional migrant.

Oak Titmouse **Observed**

Baeolophus inornatus

CONSERVATION STATUS: IUCN Least Concern, National Audubon Society Watch List, American Bird Conservancy Green List, U.S. Bird Conservation Watch List.

OCCURRENCE ON SITE: This species is an abundant resident in cottonwood riparian and coast live oak habitats in lowlands and uplands.

Coastal California Gnatcatcher **Not Observed**

Polioptila californica californica

CONSERVATION STATUS: Federally Threatened, California Species of Special Concern¹.

POTENTIAL TO OCCUR ON SITE: This species was not seen during present surveys. Dudek conducted protocol surveys on Landmark Village and Mission Village (projects within Newhall Ranch) in 2007, which were negative.

California Thrasher **Not Observed**

Toxostoma redivivum

CONSERVATION STATUS: IUCN Least Concern, National Audubon Society Watch List, American Bird Conservancy Green List, U.S. Bird Conservation Watch List.

OCCURRENCE ON SITE: This species is a common resident in the sage scrub and chaparral community south of the Santa Clara River.

Yellow Warbler **Not Observed**

Dendroica petechia brewsteri* and *D. P. morcomi

CONSERVATION STATUS: California Species of Special Concern, IUCN Least Concern.

OCCURRENCE ON SITE: This species does not winter in North America.

Yellow-breasted Chat **Not Observed**

Icteria virens

CONSERVATION STATUS: California Species of Special Concern, IUCN Least Concern.

OCCURRENCE ON SITE: This species does not winter in North America.

Summer Tanager **Not Observed**

Piranga rubra

CONSERVATION STATUS: California Species of Special Concern, IUCN Least Concern.

POTENTIAL TO OCCUR ON SITE: This species does not winter in North America, however could occur on the site occasionally, during migration.

Southern California Rufous-crowned Sparrow **Observed**

Aimophila ruficeps canescens

CONSERVATION STATUS: California Species of Special Concern¹, IUCN Least Concern.

OCCURRENCE ON SITE: Observed in lowland scrub habitat in several locations on the south side of the River, east of Wolcott.

Chipping Sparrow **Not Observed**

Passerina spizella

CONSERVATION STATUS: IUCN Least Concern.

POTENTIAL TO OCCUR ON SITE: This species is a common migrant through the site.

Black-chinned Sparrow **Not Observed**

Spizella atrogularis

CONSERVATION STATUS: USFWS Bird of Conservation Concern, IUCN Least Concern, National Audubon Society Watch List, American Bird Conservancy Green List, U.S. Bird Conservation Watch List.

POTENTIAL TO OCCUR ON SITE: This species is likely to occur as a migrant on sage scrub- and chaparral-covered hillsides. A few may remain to breed on more rugged slopes.

Bell's Sage Sparrow **Not Observed**

Amphispiza belli belli

CONSERVATION STATUS: USFWS Bird of Conservation Concern, California Species of Special Concern¹, IUCN Least Concern.

POTENTIAL TO OCCUR ON SITE: This species is a resident in chamise-dominated chaparral and in sage scrub along ridgelines throughout much of the Santa Clara Valley, however, it was not detected in the present survey; which extended only marginally into typical sage sparrow habitat on the higher slopes and ridgelines.

Tricolored Blackbird **Not Observed**

Agelaius tricolor

CONSERVATION STATUS: USFWS Bird of Conservation Concern, California Species of Special Concern, IUCN Least Concern, Audubon Society Watch List, American Bird Conservancy Green List, U.S. Bird Conservation Watch List.

POTENTIAL TO OCCUR ON SITE: This species has been documented foraging in blackbird flocks in the agricultural fields in winter, but none were seen during the current survey.

Yellow-headed Blackbird**Not Observed*****Xanthocephalus xanthocephalus***

CONSERVATION STATUS: IUCN Least Concern.

POTENTIAL TO OCCUR ON SITE: A few individuals undoubtedly occur on the site in wintering flocks of blackbirds.

Lawrence's Goldfinch**Observed*****Carduelis lawrencei***

CONSERVATION STATUS: USFWS Bird of Conservation Concern, IUCN Least Concern, National Audubon Society Watch List, American Bird Conservancy Green List, U.S. Bird Conservation Watch List.

OCCURRENCE ON SITE: Three individuals were observed along an agriculture field near Potrero Canyon entrance river crossing.

SUMMARY

Of the 41 special-status species discussed, 17 were observed on Newhall Ranch property during the current winter survey period. Of the 17 special-status species observed, nine of these were raptor species, including the White-tailed Kite, Sharp-shinned Hawk, Cooper's Hawk, Northern Harrier, Ferruginous Hawk, Golden Eagle, Merlin, Peregrine Falcon, and Prairie Falcon. The most abundant wintering raptor was the Ferruginous Hawk.

Sensitive raptor species were most frequently observed in the lowlands, foraging in agricultural and open fields along the Santa Clara River and in Potrero Canyon. Sensitive non-raptor species also occurred most frequently along the river and in the agricultural fields.

Winter surveys conducted last year (2007) were started late in the winter and thus missed the occurrence of Ferruginous Hawks and Peregrine Falcons. The expanded survey area in 2008 also included the occurrence of a pair of golden eagles in upper Potrero Canyon.. However, all other species detected during the current surveys were also detected during last year's late winter and spring surveys.

Also, White-tailed Kites occurred less frequently than last year. In February 2007, a small roost of about eight individuals was observed near the Castaic Creek confluence. In addition, at least 10 pairs were observed early in the breeding season, although only three pairs ultimately nested in the survey area, along the Santa Clara River. However, from November 2007 to the present, only 3 different individuals have been observed in the survey area, and no roosts have been located in the survey area. Two of these individuals are seen irregularly at the same two locations along the Santa Clara River; one at the Las Brisas Bridge and one just west of the Ventura County line. The third individual has only been seen on one occasion. It is unknown whether the species' numbers will increase or whether any kites will breed on the site in the upcoming months. The kites observed were foraging within the river channel as well as in the lowland agricultural fields and fallow patches adjacent to the river.

Appendix A. All Special-Status Bird Species Observations On Newhall Ranch Property November 12, 2007 – January 22, 2008.

Species	Date	Easting	Northing	General Location	Notes
AMBI	01/19/08	346114	3808370	Potrero Cyn. river crossing	flushed from cattails along river south side.
BCNH	12/29/07	349739	3809919	Wolcott river crossing	7 birds flying over at dusk
COHA	12/17/07	350579	3807006	Potrero Cyn.	adult female coops perched 100m south of PRFA
COHA	12/23/07	342388	3808220	raised water pipeline east of las Brisas	hunting through willows
COHA	01/17/08	348656	3807311	Potrero Cyn.	adult female(?) perched on cottonwood along road.
COHA	01/22/08	349724	3807345	Mid Potrero Canyon	
COHA	01/02/07	348673	3807441	Potrero Cyn.	juv. female
FEHA	11/12/07	350034	3810698	ag field W of trailer	perched on power pole over 126
FEHA	11/18/07	352463	3811781	Alfalfa field	adult female
FEHA	11/18/07	348394	3809933	ag field w of Wolcott	immature male
FEHA	11/23/07	352463	3811781	alfafa fields	perched next to storage yard
FEHA	11/23/07	350817	3807269	Potrero Cyn.	
FEHA	11/24/07	342429	3807788	River at pipe crossing	adult
FEHA	11/30/07	349949	3809959	Wolcott ag fields	adult
FEHA	11/30/07	349023	3810228	1/2 mi W of Wolcott	juvenile
FEHA	11/30/07	346584	3807477	lower Potrero	adult
FEHA	11/30/07	349949	3809959	Wolcott ag field	adult
FEHA	11/30/07	349023	3810228	1/2 mi W of Wolcott	Juvenile on fence post
FEHA	11/30/07	346584	3807477	Potrero Cyn.	adult on power pole
FEHA	12/05/07	347954	3809712	ag fields west of Chiquita gate	Adult. Perched on pump pole in ag field
FEHA	12/05/07	343061	3807780	Below reservoir	adult
FEHA	12/09/07	340488	3808782	Las Brisas Bridge N side of 126	adult perched on pole
FEHA	12/17/07	352126	3811895	eastern most ag field	perched on post- should be banded, waypoint 214 in Pete's GPS
FEHA	12/17/07	348206	3807239	Potrero Cyn.	perched
FEHA	12/17/07	346137	3807711	mouth of Potrero Cyn.	adult female perched on an oak
FEHA	12/17/07	348077	3810003	ag fields north side of river	soaring
FEHA	12/21/07	351992	3811806	Southwest of I-5/126 interchange along south side of Henry Mayo Drive	Previously Colorbanded by Pete and confirmed same bird
FEHA	12/22/07	352505	3811756	east alfalfa field	adult hunting and being chased by 2 adult RTHA's

Species	Date	Easting	Northing	General Location	Notes
FEHA	12/22/07	348512	3809838	river x-ing west of wolcott	flying over the river, juv. Light morph
FEHA	12/22/07	349596	3809933	west side of dumpster at wolcott	perched, its just after sunset, still light out
FEHA	12/23/07	349654	3809918	wolcott tilled field	Light morph, juv based on underside view.
FEHA	12/23/07	348397	3809763	west wolcott by RTHA nest in eucs.	adult flying over riparian area occassionally kiting over ag fields
FEHA	12/23/07	348225	3809694	west wolcott by RTHA nest in eucs.	second location for above FEHA, same behavior
FEHA	12/23/07	348213	3809689	west wolcott by RTHA nest in eucs.	third location, over ag field, hunting
FEHA	12/23/07	350200	3810644	wolcott red barn	flew over tilled field, perched on t-pole by red barn and hwy 126. Adult
FEHA	12/23/07	352512	3811170	Magic Mtn ag field	what appeared to be an HY hunting over ag field.
FEHA	12/27/07	352585	3808525	Magic Mtn back gate mesas	2 foraging over mesas above S side of river
FEHA	12/28/07	352784	3811300	Magic Mtn ag field	hunting over field
FEHA	12/30/07	347317	3807263	upper Potrero	adult flying, north side of road
FEHA	12/30/07	349636	3810350	Wolcott ag fields	adult flying across middle of fields
FEHA	12/30/07	350163	3810593	Wolcott east ag field	adult perched.
FEHA	01/02/08	350154	3806686	upper Potrero	S side, flying over dry hills
FEHA	01/09/08	340240	3808799	Brisas bridge, N side 126	Hunting over disked field E side of driveway
FEHA	01/11/08	340240	3808799	Brisas bridge, N side 126	Perched over disked field E side of driveway
FEHA	01/17/08	351678	3811717	east alfalfa field	adult perched on ground in alfalfa field by telephone post.
FEHA	01/17/08	351678	3811717	east alfalfa field	when adult flushed a juvenile flew to the telephone post immediately.
FEHA	01/17/08	351650	3811757	east alfalfa field	above juvenile also perched in cottonwood along road.
FEHA	01/17/08	350150	3810319	Wolcott east field	se corner perched on ground in field. Adult.
FEHA	01/17/08	346587	3807461	Potrero Cyn.	adult perched on telephone post
FEHA	01/17/08	347222	3807257	Potrero Cyn.	adult perched on telephone post along road.
FEHA	01/18/08	340470	3808341	Las Brisas	adult intermediate morph flying over ag fields
FEHA	01/18/08	346348	3807254	Potrero Cyn.	adult hunting ag fields
FEHA	01/18/08	350418	3806586	Potrero Cyn.	flew over open field (juv light)
FEHA	01/19/08	346100	3808360	Potrero Cyn. river crossing	flying over the river hunting
FEHA	01/19/08	346579	3807342	Potrero Cyn.	adult light hunting over pasture
FEHA	01/19/08	346763	3807361	Potrero Cyn.	same adult light perched on telephone pole
FEHA	01/20/08	350081	3810068	Wolcott field	caught one adult FEHA, other adult FEHA on t-pole watching
FEHA	01/21/08	347395	3807288	Potrero Cyn. between barn and river	
FEHA	01/21/08	350091	3806550	Mid Potrero Canyon at SW Canyon with mature Pepper Trees	

Species	Date	Easting	Northing	General Location	Notes
FEHA	01/22/08	350296	3806493	Mid Potrero Canyon at SW Canyon with mature Pepper Trees	
FEHA	12/29/07	349642	3810316	fencepost along Wolcott	adult
FEHA	12/29/07	350200	3810523	field E of Wolcott	juvenile
FEHA	12/29/07	349907	3810619	field E of Wolcott	same as FEHA02
FEHA	12/29/07	349935	3810711	field E of Wolcott	same as FEHA02
FEHA	12/29/07	349587	3810210	field W of Wolcott	same as FEHA01
FEHA	01/01/07	352270	3811864	alfalfa field near 126/Old Rd jct	ad.
FEHA	01/02/07	348579	3807437	Potrero Cyn.	juv.
GOEA	11/30/07	350137	3807072	upper Potrero	perched on telephone pole north side of road
GOEA	11/30/07	350137	3807072	Potrero Cyn.	adult, perched on wooden pole
GOEA	12/17/07	350347	3806960	Potrero Cyn.	adult male and female perched together on same power tower
GOEA	01/02/08	351531	3805747	upper Potrero	soaring high above south side ridge
GOEA	01/17/08	350482	3806816	Potrero Cyn.	2 adult eagles soaring over the power towers and heading westerly.
GOEA	01/17/08	350210	3806539	Potrero Cyn.	same 2 eagles soaring over the hills
GOEA	01/18/08	350633	3806778	Potrero Cyn.	2 golden eagles together close to power towers.
GOEA	01/22/08	350874	3806451	Potrero Cyn. at upper ranch house	
GOEA	12/29/07	351505	3809687	S of river near Magic Mtn	adult flying over ridge N to S
GOEA	01/03/07	350470	3806949	Potrero Cyn.	adult feeding on prey item
HOLA	12/17/07	349667	3810227	wolcott dry fields	about 225 birds foraging on the east field
HOLA	12/22/07	352505	3811756	east alfalfa field	500 mixed with AMPI's using alfalfa field
HOLA	12/22/07	349469	3810466	wolcott ag field	16 at puddle drinking water, and 100 plus in the tilled field foraging
HOLA	12/23/07	349484	3810445	wolcott yard	2 individuals near puddle on dirt road
HOLA	12/23/07	342602	3808051	raised water pipeline east of Las Brisas	can hear one flying over head while parked at tilled field
HOLA	01/17/08	349294	3810029	wolcott west field	tilled field with 95 plus HOLA's.
HOLA	12/29/07	350009	3810461	field E of Wolcott	about 120 birds
HOLA	12/30/07	344227	3807731	mouth of Potrero? Cyn.	about 15 birds
HOLA	01/01/07	349611	3810212	field W of Wolcott	about 5 birds
LAGO	12/17/07	346182	3808499	north side of Potrero river x-ing	3 individuals perched on a fence bordering an ag field
LOSH	11/28/07	352461	3811154	Magic Mtn rear ranch gate	hunting from wires
LOSH	11/30/07	346588	3807480	lower Potrero	
LOSH	11/30/07	346590	3807480	Potrero Cyn.	

Species	Date	Easting	Northing	General Location	Notes
LOSH	12/02/07	341924	3806419	Lower Tapo Cyn. orchard	
LOSH	12/05/07	349021	3810335	west Wolcott ag field	
LOSH	12/17/07	349671	3810209	wolcott upper south mesa ag field	perched on post- should be banded, waypoint 214 in Pete's GPS
LOSH	12/23/07	349604	3810475	wolcott yard	perched on telephone pole in yard eating something
LOSH	12/28/07	352039	3810798	inside Magic Mtn gate	top of draw where I caught BNOWs
LOSH	01/09/08	352715	3811081	Magic Mtn back gate	
LOSH	01/19/08	346644	3807425	Potrero Cyn.	perched on telephone line
LOSH	01/19/08	347523	3807232	Potrero Cyn.	perched on telephone line by dirt mound
LOSH	01/22/08	350344	3807105	Mid Potrero Canyon in willows along east side of road	
LOSH	12/28/07	349602	3810477	Walcott at Highway 126	in fenced maintenance area
LOSH	12/29/07	351870	3811750	N of river near I-5	edge of alfalfa field
LOSH	12/29/07	351624	3811681	N of river near I-5	may be same bird as LOSH02
LOSH	12/30/07	345921	3806724	Salt Creek Cyn.	
LOSH	01/02/07	348046	3807230	Potrero Cyn.	
LOSH	01/02/07	348043	3807173	Potrero Cyn.	same as LOSH05
LOSH	01/02/07	347951	3807226	Potrero Cyn.	same as LOSH05
LOSH	01/02/07	348433	3807268	Potrero Cyn.	probably same as LOSH05
MAWR	12/29/07	349713	3809801	Wolcott river crossing	
MAWR	12/30/07	343659	3808032	river crossing near reservoir	
MERL	12/21/07	352911	3811927	CHP Alfalfa Field along west side of The Old Road and I-5	Numerous observations throughout day in same field
MERL	12/22/07	349374	3810459	wolcott gate and west dirt field	foraging
MERL	12/22/07	349629	3810355	wolcott gate/fence	location of foraging attempt made by the above bird
MERL	12/23/07	346362	3808925	cow pasture	foraging, perched, then took off eat thru ag fields
MERL	12/23/07	346556	3808814	pasture/ag field	MERL perched before heading east.
MERL	12/23/07	348263	3809869	wolcott west	perched on barbwire fence that sections dry field
MERL	12/23/07	352298	3811779	east alfalfa field	alfalfa field and crossing over the riparian area heading south east.
MERL	01/09/08	352006	3811902	Alfalfa field - east	female
MERL	01/21/08	354975	3806543	Potrero Cyn. at oil company office along west side of road	
MERL	01/01/07	352696	3811949	alfalfa field near 126/Old Rd jct	ad. male
MERL	01/02/07	352646	3811978	alfalfa field near 126/Old Rd jct	same as MERL01

Species	Date	Easting	Northing	General Location	Notes
MERL	01/02/07	347398	3807219	Potrero Cyn.	male
NOHA	11/18/07	339622	3808142	west of Las Brisas bridge	adult female
NOHA	11/18/07	342552	3807838		female
NOHA	11/23/07	352784	3811300	Magic Mtn ag field	3 adult females perched around the field at 7am
NOHA	11/23/07	352784	3811300	Magic Mtn ag field	3 adult females perched around the field at 7am
NOHA	11/23/07	352784	3811300	Magic Mtn ag field	3 adult females perched around the field at 7am
NOHA	11/25/07	340723	3808405	River near Brisas kite	Immature hunting over cabbage field
NOHA	11/28/07	352784	3811300	Magic Mtn ag field	perched at 730am and hunting
NOHA	12/01/07	351867	3811873	alfafa fields	adult female hunting over fields
NOHA	12/02/07	348866	3810205	west Wolcott ag field	adult male
NOHA	12/02/07	349748	3809951	E Wolcott ag field	adult male - likely same as above
NOHA	12/05/07	340715	3808525	east of kite parsley field	adult female hunting over riparian areas
NOHA	12/06/07	340699	3808511	near kite parsley field	immature hunting over river
NOHA	12/17/07	348206	3807239	Potrero Cyn.	soaring along slope
NOHA	12/17/07	343047	3807592	bee hive	soaring
NOHA	12/21/07	352911	3811927	CHP Alfalfa Field along west side of The Old Road and I-5	Numerous observations throughout day in same field
NOHA	12/21/07	352799	3811349	near Castaic Canyon Road and Potrero Road near NW parking lot of Magic Mtn	Numerous observations throughout day in same field
NOHA	12/22/07	352361	3811789	east alfalfa field	adult female using riparian corridor along field
NOHA	12/22/07	343656	3808068	river x-ing by county line	adult female
NOHA	12/23/07	340664	3808650	Las Brisas	flew from riparian edge to southside of river
NOHA	12/23/07	343602	3808294	east of Las Brisas	one of two locations for an adult female hunting over agricultural field
NOHA	12/23/07	343680	3808219	east of Las Brisas	second location of adult female along riparian edge
NOHA	12/23/07	342588	3807793	suspended waterline	imm female hunting over vegetation (arundo, young cottonwoods, mulefat)
NOHA	12/27/07	353178	3811718	alfafa fields	adult male hunting over field
NOHA	12/28/07	347934	3807217	Potrero Cyn. corrals	adult female perched on fence
NOHA	01/01/08	345131	3806761	Lower Salt creek	lower intersection. Ad female foraging over wash, mulefat scrub, dry sage.
NOHA	01/01/08	352651	3811706	alfalfa fields	2 adult males hunting over field
NOHA	01/09/08	352784	3811300	Magic Mtn ag field	perched in cottonwood grove next to ag field
NOHA	01/09/08	340140	3808796	Brisas bridge, N side 126	Hunting over fallow patches near nursery
NOHA	01/11/08	340140	3808796	Brisas bridge, N side 126	Hunting over fallow patches near nursery

Species	Date	Easting	Northing	General Location	Notes
NOHA	01/17/08	352785	3811733	east alfalfa field	hunting amongst the bailed alfalfa field, flushing birds. Adult male
NOHA	01/17/08	346069	3808453	Potrero Cyn. river crossing	hunting along the rivers and the riparian edge. Juv female.
NOHA	01/18/08	347360	3807254	Potrero Cyn.	juv hunting over field 30 m to east, location near giant dirt mound.
NOHA	01/21/08	350654	3806543	Potrero Cyn. at oil company office along west side of road	
NOHA	01/01/07	352774	3811793	alfalfa field near 126/Old Rd jct	ad. male & 2nd yr male
NOHA	01/02/07	347908	3807091	Potrero Cyn.	juv.
PEFA	12/29/07	349781	3810309	field E of Wolcott	adult male
PRFA	12/09/07	348730	3810487	1/4 W of Wolcott, N side 126	adult male
PRFA	12/17/07	350708	3806692	Potrero Cyn.	unk. Female perched on hill, possible foraging attempt.
PRFA	12/17/07	350579	3807006	Potrero Cyn.	same female, just moved to power tower to perch
PRFA	12/17/07	350558	3806951	Potrero Cyn.	juv male perched on telephone pole, attempted to trap several times
PRFA	12/17/07	342482	3808084	north side of river, down at the water pipeline	hy male perched on telephone post
PRFA	12/21/07	352911	3811927	CHP Alfalfa Field along west side of The Old Road and I-5	Numerous observations throughout day in same field
PRFA	12/28/07	347934	3807217	Potrero Cyn. corrals	perched on telephone pole at corrals
PRFA	12/30/07	350563	3806943	mid Potrero Cyn	perched on high transmission towers
PRFA	01/17/08	347952	3806913	Potrero Cyn.	skirmish with a RTHA
RCSP	12/28/07	351403	3810790	S of river near Magic Mtn	
RCSP	12/28/07	351229	3810442	S of river near Magic Mtn	
RCSP	12/28/07	351572	3810907	S of river near Magic Mtn	2 birds
RCSP	12/29/07	351494	3810808	S of river near Magic Mtn	3 birds
SSHA	11/18/07	342552	3807838		female HY
SSHA	12/22/07	352152	3811779	east alfalfa field	adult hunting
SSHA	12/22/07	343039	3807574	beehive clearing	perched adult, male?
SSHA	01/18/08	342158	3808098	Las Brisas	adult female perched in tree, hunting adjacent to ag and rip zone.
SSHA	12/30/07	346383	3806504	Salt Creek Cyn.	adult male
SSHA	01/03/07	347462	3809973	near jct of Chiquito and 126	adult
WTKI	11/18/07	352520	3811265	Magic Mtn ag field	perched in snag in cottonwood grove
WTKI	11/18/07	342483	3807814	River at pipe crossing	perched in snag east side of pipes
WTKI	11/24/07	342594	3807784	River at pipe crossing	perched in snag east side of pipes
WTKI	11/24/07	340312	3808246	Las Brisas bridge	perched in snag on east side of bridge

Species	Date	Easting	Northing	General Location	Notes
WTKI	11/25/07	342594	3807784	River at pipe crossing	perched in snag east side of pipes, bumped
WTKI	11/25/07	340694	3808520	Las Brisas bridge	perched on wire over parsley field N side of River
WTKI	12/01/07	343451	3808057	Below reservoir	Hunting over river
WTKI	12/01/07	340694	3808520	Las Brisas bridge	perched on wire over parsley field N side of River
WTKI	12/02/07	344230	3808400	River near county Line	perched on snag in river, near last years oak nest
WTKI	12/02/07	340694	3808520	Las Brisas bridge	perched on wire over parsley field N side of River
WTKI	12/05/07	342594	3807784	River at pipe crossing	perched in snag east side of pipes
WTKI	12/05/07	340694	3808520	Las Brisas bridge	perched on wire over parsley field N side of River
WTKI	12/06/07	340694	3808520	Las Brisas bridge	perched on wire over parsley field N side of River
WTKI	12/17/07	342482	3808084	north side of river, down at the water pipeline	flew over willow riparian
WTKI	12/17/07	342634	3807917	north side of river, down at the water pipeline	hunting
WTKI	12/21/07	352799	3811349	near Castaic Canyon Road and Potrero Road near NW parking lot of Magic Mtn	one observation at 1130 perched on sang
WTKI	01/09/08	340140	3808796	Brisas bridge, N side 126	Hunting small patch of fallow field next to nursery
WTKI	01/11/08	340312	3808246	Las Brisas bridge	Back at snag on east side of bridge

AMBI: American Bitter
 BCNH: Black-crowned Night-heron
 COHA: Cooper's Hawk
 FEHA: Ferruginous Hawk
 GOEA: Golden Eagle
 HOLA: Horned Lark
 LAGO: Lawrence's Goldfinch
 LOSH: Loggerhead Shrike
 MAWR: Marsh Wren
 MERL: Merlin
 NOHA: Northern Harrier
 PEFA: Peregrine Falcon
 PRFA: Prairie Falcon
 RCSP: Rufous-crowned Sparrow
 SSHA: Sharp-shinned Hawk
 WTKI: White-tailed Kite