

---

**Causey, A., "Focused Surveys for the Undescribed Everlasting Species in  
Castaic Creek and the Santa Clara River in Los Angeles County,  
California"(December 14, 2007)**

---

**MEMORANDUM**

---

**TO:** Matt Carpenter, Newhall Land (Newhall)  
**FROM:** Adam Causey, Dudek  
**SUBJECT:** Focused Surveys for the Undescribed Everlasting Species in Castaic Creek and the Santa Clara River in Los Angeles County, California  
**DATE:** December 14, 2007  
**CC:** Sherri Miller, Dudek

---

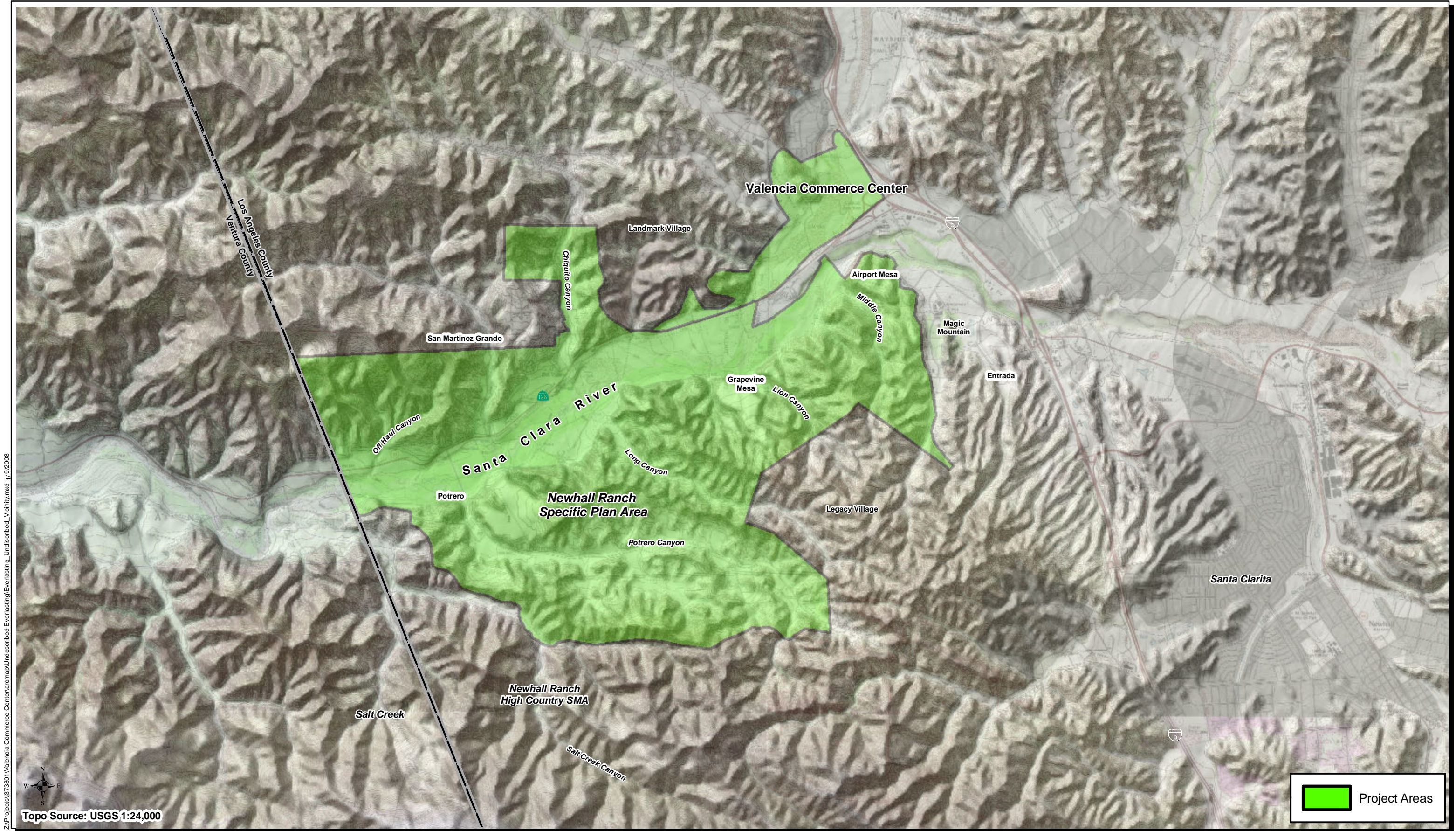
Dudek conducted focused surveys for *Gnaphalium* sp. nova (undescribed everlasting) within Castaic Creek in the Valencia Commerce Center (VCC) and the Santa Clara River in the Newhall Ranch Specific Plan area in Los Angeles County, California. Plants of this unnamed everlasting were previously ascribed to the species *Gnaphalium leucocephalum*, which is not thought to occur west of the Peninsular and Transverse Ranges in California. These specimens, rather, are thought by UC Riverside and Rancho Santa Ana Botanic Garden botanists to be an undescribed taxon. The *Gnaphalium* plants on the Newhall Ranch SPA differ from *Gnaphalium leucocephalum* in stature, pubescence, and phyllary characters. The focused surveys were completed in an effort to document 2007 occurrences of the undescribed everlasting that occur within the Specific Plan and VCC areas (Figure 1).

On January 30, 2007, Dudek biologists Clint Emmerson, Adam Causey, Manna Warburton and Rebekah Krebs conducted focused surveys for the undescribed everlasting on secondary alluvial benches along Hasley Canyon Creek upstream of the I-5 Bridge and east of Commerce Center Drive, at the confluence of Castaic Creek and the Santa Clara River, and along the Santa Clara River near the mouth of Long Canyon.

Within the VCC planning area one occurrence of the undescribed everlasting was observed during the 2007 focused surveys (Figure 2). The occurrence is estimated to be composed of approximately 350 individuals.

Within the Specific Plan area, one main occurrence and a number of smaller occurrences of this undescribed species were observed, totaling approximately 85 individuals. Of the five occurrences of the undescribed everlasting observed on the Specific Plan area, four were comprised of 2 or fewer individuals; the remaining occurrence was comprised of approximately 80 individuals.

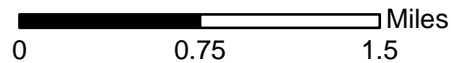
In both the Specific Plan area and the VCC planning areas, the vegetation around these plants consists of sparsely vegetated open river wash.



Z:\Projects\373801\Valencia Commerce Center\arcmap\Undescribed Everlasting\_Vicinity.mxd 1/9/2008

Topo Source: USGS 1:24,000

**DUDEK**  
 Santa Barbara GIS Division  
 621 Chapala Street  
 Santa Barbara, Ca 93101  
 (805)963-0651

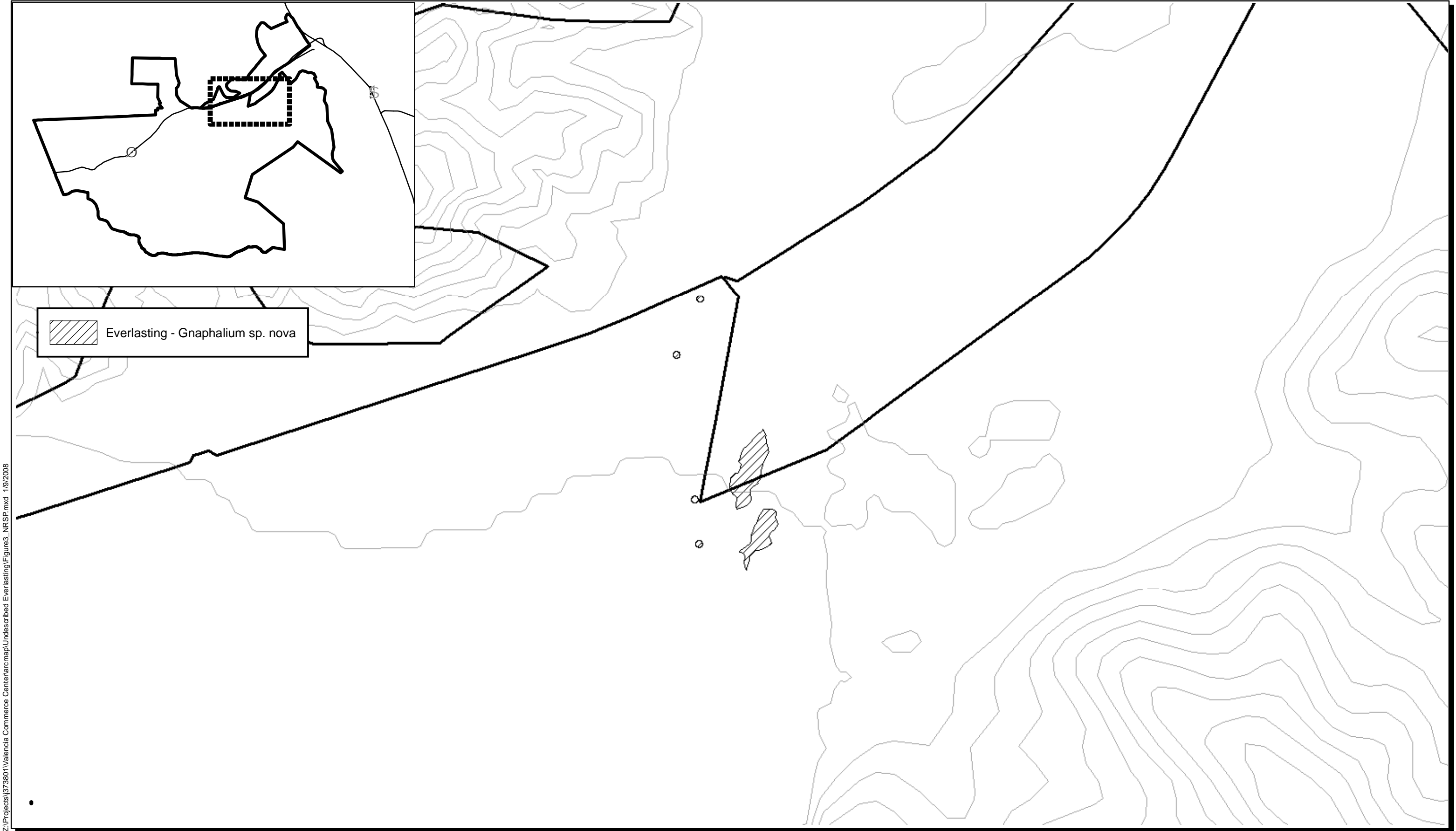


Focused Surveys for the Undescribed Everlasting  
**Vicinity Map**

**FIGURE**  
**1**



Z:\Projects\373801\Valencia Commerce Center\map\Undescribed Everlasting\Figure2\_pop.mxd 1/9/2008



Z:\Projects\37380\Valencia Commerce Center\arcmap\Undescribed Everlasting\Figure3\_NRSP.mxd 1/9/2008