

Dubai Star Oil Spill NRDA – Fall 2015 Update



Background

On October 30, 2009, a re-fueling accident resulted in the discharge of over 400 gallons of Intermediate Fuel Oil (IFO) from the oil tanker Dubai Star. State and federal natural resource trustee agencies assessed the injuries to wildlife, habitat, and recreational uses and [resolved the natural resource damage assessment \(NRDA\) case in May 2012](#) for \$850,000 for natural resource restoration. The trustee agencies and the East Bay Regional Park District have identified five restoration projects described below to

address natural resources injured by the spill.

Sand Replenishment at Crown Beach

Restoration funds from the Dubai Star spill contributed to the [East Bay Regional Park District's sand replenishment project](#) at the Crown Beach Regional Shoreline. This project provided additional shoreline recreation and erosion protection for the adjacent Alameda community. Construction was completed in December 2013.



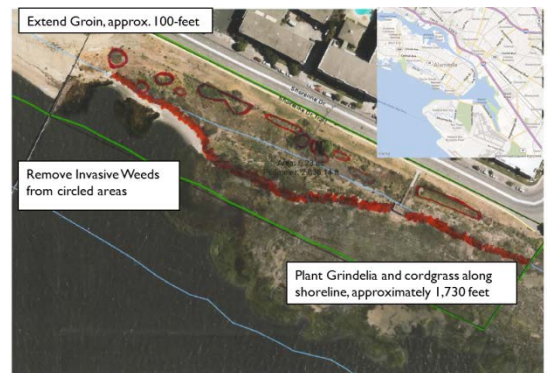
Fishing Outreach Program

East Bay Regional Park District has offered [fishing programs](#) in 2013, 2014 and 2015 for the public in partnership with the City of Alameda Recreation and Park Department, Girls Inc. of Alameda County, and several local elementary schools. As of Fall 2015, over 700 participants have been involved in events at several locations along the Alameda shoreline. A mobile fishing trailer has been purchased and is currently being outfitted to

facilitate fishing programs for larger groups at more locations. This fishing outreach program will continue with additional events through 2016.

Extension of the Park St. Groin Wall

East Bay Regional Park District will extend the existing Park Street Groin approximately 100 feet further shoreward to the toe of beach dunes along Shoreline Drive. The construction will limit further migration of sand from Crown Beach into the adjacent marsh. Construction of the groin wall is anticipated to begin in Fall 2016.



Elsie Roemer Marsh Restoration

East Bay Regional Park District will remove 0.75 acres of invasive weeds, and plant grindelia and cordgrass within 6.23 acres of the Elsie Roemer Marsh. Marsh enhancement activities are anticipated to be complete by spring of 2017.

Rocky Intertidal Restoration along Alameda Shoreline

The Trustees are working with [University of California, Santa Cruz rocky intertidal scientists](#) to restore rocky intertidal habitat along the Alameda County shoreline. Staff will transplant rockweed, an ecological foundation species, into areas with low abundance to enhance existing rocky intertidal habitat. Rockweed restoration being conducted across San Francisco Bay under the [Cosco Busan Trustee Council](#) will inform planning for this Alameda-specific project.



Dubai Star NRDA Restoration Budget

| | Restoration Project | Funds | Status |
|--|---|-----------------------|--------------|
| Recreational Use | Sand Replenishment at Crown Beach | \$300,000 | Complete |
| | Fishing Outreach Program | \$50,000 | Ongoing |
| Bird and Marsh Habitat ¹ | Park Street Groin Extension | \$281,000 | Final Design |
| | Wetland Restoration at Elsie Roemer Marsh | \$75,000 ² | Planning |
| Rocky Intertidal Habitat | Rockweed Restoration along Alameda County Shoreline | \$44,000 | Planning |
| Restoration Sub-total | | \$750,000 | |
| Administration & Trustee Oversight | | \$100,000 | |
| Total Funds Received | | \$850,000 | |

¹ An additional \$300,000 in additional funds will be provided by East Bay Regional Parks District.

² An additional \$36,500 in matching funds will be provided by [CDFW-OSPR's small spill NRDA restoration fund](#).



Contact Information

Becky Stanton

Office of Spill Prevention and Response
California Department of Fish and Wildlife
(916) 327-0916

beckye.stanton@wildlife.ca.gov

www.wildlife.ca.gov/OSPR/NRDA/Dubai-Star-San-Francisco-Bay

