
**Guthrie, D.A., "Bird Surveys along the Santa Clara River and Its Tributaries
near Valencia, California, 1995" (July 12, 1995; 1995A)**

Original in Matt Carpenter's
Office

1995

**BIRD SURVEYS ALONG THE SANTA CLARA RIVER AND ITS TRIBUTARIES
NEAR VALENCIA, CALIFORNIA, 1995**

Prepared for:

Mark Subbotin
Valencia Corporation
23823 Valencia Blvd.
Valencia, Ca. 91355

Prepared by:

Daniel A. Guthrie
W.M. Keck Science Center
925 N. Mills Ave
Claremont Ca. 91711
(909) 607-2836

July 12, 1995

0725021544

**Bird Surveys along the Santa Clara River and its Tributaries
near Valencia, California, 1995**

Prepared by: Daniel A. Guthrie
W.M. Keck Science Center
925 N. Mills Ave
Claremont Ca. 91711
(909) 607-2836

Nature and Scope of Surveys

During the spring and early summer of 1995 surveys were conducted of a section of the Santa Clara River and its tributaries in the vicinity of Valencia, California to determine presence or absence of least Bell's vireo and other Species of Concern. Numbers of all species observed were noted, and special attention was placed on locating species considered rare and endangered.

Each survey was conducted on foot by observers well acquainted with both visual and auditory patterns of southern California birds. All surveys occurred between 6 and 10 a.m. If no vireos were found during the first two surveys, calls of least Bell's vireo were played during subsequent censuses to elicit response from territorial males. Survey routes were designed to cover all areas of each section of the river, with emphasis placed on wetter habitats where least Bell's vireos and other sensitive riparian species are most likely to occur. Personnel for all surveys were Daniel A. Guthrie, Richard F. Clements, and Judith A. Sugden.

To facilitate surveys, the area was divided into eight sections (Figure 1). Delineation of the eight areas and comments on each follow. Surveys of the normally dry sections of the river system (Areas 7 - 8) where least Bell's vireos have not been observed during the past 5 years were conducted twice during the nesting season. The second survey was delayed until June to insure that late arriving species such as yellow-billed cuckoo and willow flycatcher would not be missed. Surveys of the remaining sections of the Santa Clara River (Areas 1 -6) were conducted according to the protocol outlined by the Fish and Wildlife Service (Appendix 1), except that surveys were limited to 6 in number.

Habitat Condition and Bird Observations.

In general, 1995 was a very wet year. This was both good and bad for birds. Late rains and floods eliminated much streamside undergrowth along the river so that species dependent upon this habitat, such as Song Sparrow, were down in numbers. However, the late rains maintained weeds and vegetation along the river and kept water running in all sections of the river except for the South Fork throughout the study period. The result was expansion of



Figure 1. Major placenames and location of study areas.

riparian species such as Blue Grosbeak and Yellow-breasted Chat into sections of the river where they were absent in previous years when these sections were dry.

Tables 1 through 8 present bird observations in each of the specific study areas for 1995. Different species breed at different times of the year. In general, species are most easily observed when they are actively defending territories by song during the establishment of breeding pairs. Once pairs are established and nesting begins song often decreases and the numbers of birds observed, therefore, also decreases. After young leave the nest, numbers observed increase. Thus, for most resident species, numbers of adult birds are most accurately censused in April and May, when territorial activity is at a maximum. A few species such as Anna's Hummingbird that nest early in the season may be underestimated. Numbers observed may decrease slightly in June and early July when birds are less active during nesting, and increase in late June and July when young birds leave the nest.

Several species that are not considered riparian species but are common in adjacent coastal sage and chaparral habitats come into the riparian zone in late summer when other vegetational areas are dry. The increase in numbers of lazuli bunting, lark sparrow, house finch, phainopepla and mourning dove in late June follow this trend.

Following are specific comments on the habitat and bird observations in each area.

Area 1. Santa Clara River; Old Highway to the mouth of Castaic Creek and Castiac Creek from this confluence to State Route 126.

Length of section, 3.5 miles. The Santa Clara River flows continuously in this section and is augmented by the Valencia waste water outfall near the upstream end of this section. Near Castaic Junction, large flats of wet riparian vegetation were heavily used by red-winged blackbirds, song sparrows and common yellowthroats, all of which were more common than in previous years when these flats did not exist. The pond at Castaic Junction, a remnant of an old water cress field, that was home to a colony of up to 200 pairs of tricolored redwings in 1994, was drier this year and the blackbirds, although present in small numbers at the beginning of the season, did not nest.

Area 2. Santa Clara River; Old Highway to McBean Parkway.

Length of section, 1.4 miles. The Santa Clara River flows continuously in this section. The channel is braided and wet riparian vegetation is well developed along this section of the river. Repairs to the I-5 and Old Highway bridges were in progress during April and May and probably decreased the number of swallows observed as they nest under these bridges. This area was heavily impacted by off road vehicles during the study period. However, vehicles remained for the most part in the unvegetated

section of the river channel.

Area 3. Santa Clara River; McBean Parkway to Boquet Canyon Road.

Length of section, 1.2 miles. Water, supplied by the Saugus wastewater outfall at the Boquet Canyon Bridge, is continuous in this section of the Santa Clara River. Riparian vegetation was considerably improved over 1993 as indicated by increase in song sparrows.

Area 4. Santa Clara River; Boquet Canyon Road upstream to DWP transmission lines.

Length of section, 2.3 miles. This section of the Santa Clara River in past years has been wet only briefly during spring rains. and due to water release from the DWP aqueduct 2.0 miles upstream from Boquet Canyon Road. This year water flowed continually through the census period resulting in the development of wet riparian habitat. Numbers of birds increased accordingly. Song sparrows and red-winged blackbirds increased dramatically along this section over previous years, a mallard duck nested successfully and Yellow Warblers, Blue Grosbeak and Common Yellowthroat were much more numerous than in previous years.

Area 5. Castaic Creek; Route 125 to Old Road next to Interstate 5.

Length of section, 1.8 miles. Prior to 1993 drought had killed much of the young willows along this section. The floods of 1993 removed the dead wood, but left many barren gravel bars. In 1994 these areas were well vegetated, the vegetation supported by flowing water due to upstream releases during the spring. The result was development of much wet riparian growth. During 1995 controlled water release prevented damage to this riparian habitat. Water flowed continually throughout the census period. The result was an increase in most wet riparian species, including yellowthroat, chat, and yellow warbler. Although a few redwinged Blackbirds nested, no tricolored redwings remained in the area to nest. At least three singing least Bell's vireos were recorded on censuses and are discussed under Species of Special Concern.

Area 6. San Francisquito Creek; Santa Clara River upstream 2.5 miles.

Length of section, 2.5 miles. This section, which is usually dry in June and July, was wet this year throughout the survey period. Due to better development of wet riparian vegetation, song sparrow and red-winged blackbird numbers were up from previous years and other riparian species such as chat and yellowthroat were also present for the first time in several years. Observation of a single least Bell's vireo is discussed under Species of Special Concern.

Area 7. South Fork of the Santa Clara River; McBean Parkway to Magic Mountain Parkway (Route 126).

Length of section, 1.0 miles. The channel along this section of the South Fork is narrow and very sandy. Almost all vegetation along the bottom of the channel was removed by spring floods. Some standing water was present near the McBean bridge.

Area 8. South Fork of the Santa Clara River, Route 126 upstream to Newhall Creek.

Length of section, 1.4 miles. This section of the river was dry except for damp areas formed by runoff from culverts along the west side of the creek. Cattails developed in these wet areas supported fewer song sparrows than in previous years and no redwing blackbirds, perhaps a sign of human disturbance near the wet areas.

Comments on Sensitive Species

Cooper's Hawk

Cooper's Hawk is considered a Species of Special Concern by the State of California. Two pairs of Coopers hawks were observed in 1995, the same number as observed in 1992 through 1994. This species is a resident that nests and hunts in riparian woodland habitat.

White-tailed Kite

This species, formerly the Black-shouldered Kite, is considered "Special" by the State of California. A pair of kites nested in the dry woodland on the north side of the Santa Clara River near the confluence with Castaic Creek.

Willow Flycatcher

This species is considered a Category 1 Candidate for listing under the Federal Endangered Species Act. Willow flycatchers were once widespread in wet riparian woodland in southern California but now only a few individuals exist. The main California breeding populations of this species are along the Kern River and in northern California. Individuals of this species have been observed in previous years during late May and early June. No Willow Flycatchers were observed in 1995. It seems likely that the individuals observed were migrants resting during migration to localities further north.

California Horned Lark

This species is a candidate for listing under the Federal Endangered Species Act. Horned larks were observed near Castaic Junction in plowed fields adjacent to the Santa Clara River.

Least Bell's Vireo

During 1995 least Bell's vireos were observed at two locations. On June 8 a single bird was observed near the mouth of San Francisquito Creek. This bird did not sing but responded to a tape. The bird appeared to be a young individual and given the late date of observation and the lack of any earlier observations in this area, probably represents post-breeding wandering by juvenile whose parents nested elsewhere.

Three singing least Bell's vireos were observed along Castaic Creek, as indicated in figure 2. On July 10 one of these birds was accompanied by a juvenile. The area where they were found was mostly cleared of vegetation by floods in 1993 but, due to two wet years, is now covered with dense early succession riparian growth. This dense low vegetation is the type in which least Bell's vireos usually nest. In order to avoid disturbance of possibly nesting birds, no search for nests was conducted. Although this section of the river has been regularly censused for birds, no birds were observed in this area prior to 1994. In 1994 a single non-singing bird was observed in this area in early June.

Yellow Warbler

The yellow warbler is considered a Species of Special Concern by the State of California. Yellow warblers prefer wet riparian habitat but are also found in large cottonwoods in drier riparian areas. Singing yellow warblers were observed along nearly every section of the Santa Clara River and Castaic Creek. A few of the birds observed were probably migrants and this species is known to sing its territorial song during migration. Numbers in 1995 were higher than those observed in previous years.

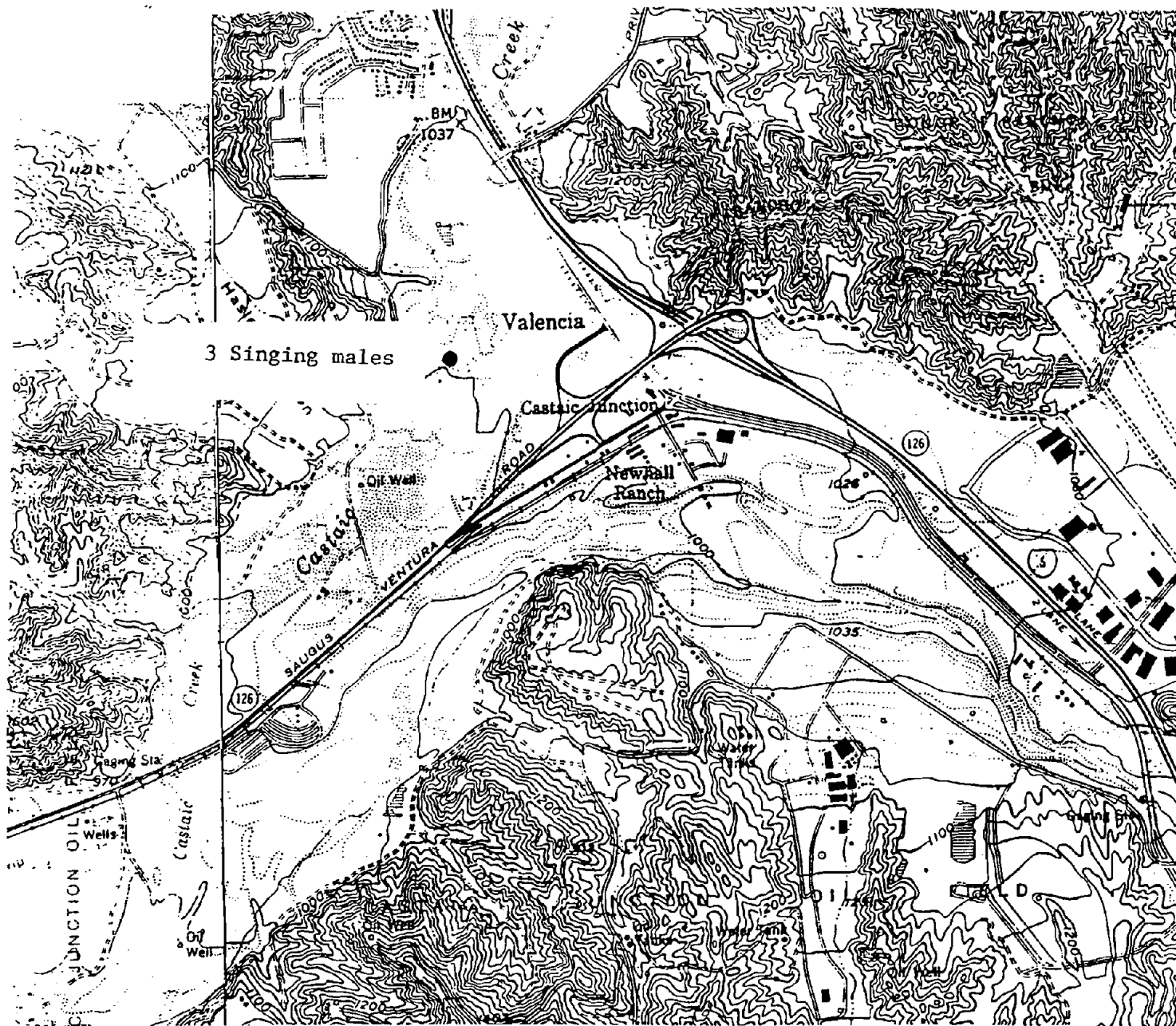
Yellow-breasted Chat

The yellow-breasted chat is considered a Species of Special Concern by the State of California. Chats were observed sparingly along the wet sections of the Santa Clara River. Numbers were up from the previous year.

Tricolored Blackbird

The tricolored blackbird is a Category 2 Candidate for listing under the Federal Endangered Species Act. A colony of about 200 breeding pairs of this species occupied a small marsh area along the side of the Santa Clara River at Castaic Junction and another smaller group of about 20 pair nested in a pond beside Castaic Creek in 1994. In years prior to 1994 this species was not observed. During 1995 a small number of tricolored blackbirds appeared in April and May and inspected the Castaic Creek site. However, the birds apparently found the site unsuitable and did not attempt to breed.

Figure 2. Location of Least Bell's Vireo Sightings in 1995



Appendix 1. Fish and Wildlife Rules for Least Bell's Vireo Censuses.

LEAST BELL'S VIREO SURVEY GUIDELINES

1. All riparian areas should be surveyed once a week from April 1 to July 31. These dates encompass the period during which most vireo nesting activity occurs. If additional information on vireo habitat utilization is needed, these surveys should be extended to August 31. Information typically collected after July 31 will reflect a broader extent of the riparian habitat and other adjacent habitat types that the vireo utilizes during the latter phase of the breeding season, especially when the young become independent of the adults.
2. Surveys must be conducted by qualified biologist(s) familiar with song and plumage characteristics of the vireo.
3. Surveys shall be conducted between dawn and 11:00 a.m. Surveys shall avoid periods of excessive heat, wind, and rain.
4. All vireo detections (e.g., vocalization points, areas used for foraging, etc.) should be used to define individual home range. These data need to be mapped on a large-scale aerial photograph.
5. Data on vireo breeding status (e.g., number and location of paired or unpaired territorial males, nest building efforts, feeding of nestlings, location of vireo nests, etc.) should be noted during each survey.
6. All sightings of cowbirds and their numbers in vireo territories should be noted during each survey.
7. No attempts should be made to locate or examine vireo nests unless authorized by permits issued by California Department of Fish and Game and the U.S. Fish and Wildlife Service.
8. A final report should be prepared which describes survey dates, methods, locations, and information identified in items 4, 5, and 6 above.

If you have any questions regarding these survey guidelines, please contact the U.S. Fish and Wildlife Service at (714) 643-4270.

Table 1. Bird Observations along the Santa Clara River System,
1995: Santa Clara River from Old Highway along I-5 to the
mouth of Castaic Creek and Castaic Creek from this confluence
to State Route 126.

Species	date: 4/27	5/11	5/25	6/14	6/26	7/10	status
Great Blue Heron	1	-	-	-	-	-	W,M
Great Egret	-	-	2	-	-	-	W,M
Green Heron	-	4	1	-	-	3	R
Bl. cr. Night Heron	2	2	-	-	-	-	M
Mallard	8	4	5	2	2	-	R
Turkey Vulture	-	-	-	-	-	1	S
White-tailed Kite	-	1	-	2	1	-	R
Golden Eagle	-	1	-	-	1	-	R
Cooper's Hawk	-	-	-	1	-	1	R
Red-shouldered Hawk	2	3	3	4	2	3	R
Red-tailed Hawk	4	3	5	2	4	4	R
American Kestrel	1	-	-	-	-	-	R
California Quail	10	10	20	16	21	23	R
Black-necked Stilt	-	-	1	-	-	-	M
Killdeer	29	4	25	25	23	24	R
Spotted Sandpiper	-	6	6	-	9	8	S
Western Sandpiper	24	-	-	-	-	-	M
Domestic Pigeon	3	-	13	4	-	-	R
Mourning Dove	7	15	15	8	4	9	R
White-th. Swift	-	-	-	12	-	-	R
Anna's Hummingbird	2	6	6	6	4	3	R
Belted Kingfisher	-	1	-	-	-	-	M
Nuttall's Woodpecker	9	8	14	14	6	10	R
Downy Woodpecker	3	1	2	2	2	1	R
Hairy Woodpecker	-	-	-	-	1	1	R
Northern Flicker	3	1	3	3	-	2	R
Black Phoebe	-	-	6	8(1)	7	10	R
Ash-thr. Flycatcher	11	9	17	18	13	8	S
Western Kingbird	3	2	2	2	1	2	S
Horned Lark	1	-	-	-	-	1	R
Violet-green Swallow	-	4	5	6	5	5	S
N. Rough-w. Swallow	26	34	70	33	30	11	S
Barn Swallow	-	-	-	-	-	1	S
Cliff Swallow	60	-	20	15	70	65	S
Scrub Jay	17	21	24	19	19	20	R
American Crow	8	12	15	11(2)	12	14	R
Common Raven	10	12	14	10	29	18	R
Plain Titmouse	6	7	4	4(2)	11	8	R
Bushtit	-	2	6	9	2	7	R
Bewick's Wren	26	27	21	20	18	21	R
House Wren	14	9	11	7	5	4	R
Western Bluebird	-	6	4	6(4)	9	10	R
N. Mockingbird	-	1	-	-	-	-	R
Calif. Thrasher	3	4	5	3	3	5	R
Phainopepla	-	-	2	3(2)	2	1	R
European Starling	17	13	8	18	37	6	R

Table 1 (cont.). Bird Observations along the Santa Clara River System, 1995: Santa Clara River from Old Highway along I-5 to the mouth of Castaic Creek and Castaic Creek from this confluence to State Route 126.

Species	date: 4/27	5/11	5/25	6/14	6/26	7/10	status
Warbling Vireo	-	1	-	-	-	-	M
Orange-cr. Warbler	1	5	-	-	-	-	M
Yellow Warbler	5	8	2	4	2	3	S
Yellow- r. Warbler	-	1	-	-	-	-	W,M
Common Yellowthroat	3	8	11	10	9	16	R
Wilson's Warbler	2	14	-	-	-	-	M
Yellow-br. Chat.	2	2	3	3	3	5	S
Western Tanager	-	4	-	-	-	-	M
Black-headed Grosbeak	8	13	11	8	6	4	S
Blue Grosbeak	4	2	5	3	4	6	S
Lazuli Bunting	-	-	-	2(4)	-	6	S
Rufous-sided Towhee	8	8	18	8	12	5	R
California Towhee	7	8	9	5	4	18	R
Lark Sparrow	-	-	-	-	-	3	R
Song Sparrow	38	34	47	43	40	39	R
Red-winged Blackbird	18	11	5	10	6	11	S
Western Meadowlark	1	-	-	-	-	-	R
Brewer's Blackbird	-	-	-	2	-	-	R
Brown-headed Cowbird	19	22	41	15	11	8	S
Northern Oriole	5	5	4	5	-	1	S
House Finch	8	10	21	26	20	16	R
Lesser Goldfinch	4	-	4	-	2	12	R
Lawrence's Goldfinch	4	-	-	-	-	-	R
American Goldfinch	-	2	-	-	-	-	W,M

Total Species:	45	49	45	45	42	47
Total Individuals:	447	391	536	452	472	456

Total Species on all visits: 71

Total Probable Breeding species: 44 (marked with *)

Status: M - Migrant; R - Resident; S - Summer Only; W - Winter Only

() = dependent young birds

Censuses of 4/27, 5/25 and 6/26 on the north side of river,
Censuses of 5/11, 6/14 and 7/10 on south side of river.

Table 2. Bird Observations along the Santa Clara River System,
1995: Santa Clara River from McBean Parkway to Old Highway
along I-5.

Species	date:	4/27	5/11	5/25	6/14	6/26	7/10	status
Black-cr. Night Heron	-	-	-	-	1	-	-	M
Green Heron	1	2	1	-	-	1	-	R
Mallard	3	2	1	-	-	-	-	R
Sharp-sh. Hawk	-	-	1	-	-	-	-	M
Cooper's Hawk	-	1	-	-	-	1	-	R
Red-shouldered Hawk	1	-	1	2	2	2	1	R
Red-tailed Hawk	-	-	2	2(2)	2	1	-	R
California Quail	3	4	16	1	9	5	-	R
Killdeer	4	6	2	10	4	-	-	R
Least Sandpiper	3	-	-	-	-	-	-	M
Domestic Pigeon	-	-	-	-	-	1	-	R
Mourning Dove	-	-	2	-	-	-	-	R
Barn Owl	-	-	-	1	-	-	-	R
Bl.-ch. Hummingbird	-	-	1	-	-	-	-	S
Anna's Hummingbird	-	-	4	-	2	-	-	R
Belted Kingfisher	1	-	-	-	-	-	-	M
Acorn Woodpecker	-	1	-	-	-	-	-	R
Nuttall's Woodpecker	4	1	10	3	9	13	-	R
Downy Woodpecker	1	2	15	3(1)	3	4	-	R
Hairy Woodpecker	-	-	1	1	3	1	-	R
Northern Flicker	-	-	-	1	1	2	-	R
Western Wood Pewee	-	-	1	-	-	-	-	M
Black Phoebe	1	-	-	1	5	13	-	R
Ash-thr. Flycatcher	2	9	6	4	3	10	-	S
Western Kingbird	-	1	-	-	-	-	-	S
Violet-green Swallow	-	-	1	-	-	-	-	S
N. Rough-w. Swallow	9	17	35	11	-	5	-	S
Cliff Swallow	-	20	3	-	-	-	-	S
Scrub Jay	5	3	7	5	5	5	-	R
American Crow	3	6	4	3	7	1	-	R
Common Raven	3	1	12	2	1	-	-	R
Plain Titmouse	5	6	16	6	9	13	-	R
Bushtit	6	4	20	11	-	-	-	R
Bewick's Wren	16	16	35	12	19	28	-	R
House Wren	7	3	-	8	4	1	-	R
Western Bluebird	2	2	4	5	2	12	-	R
Swainson's Thrush	-	-	1	-	-	-	-	S,M
American Robin	-	1	-	-	-	-	-	R
Calif. Thrasher	-	2	5	2	1	1	-	R
European Starling	14	5	18	15	2	9	-	R
Solitary Vireo	-	2	-	-	-	-	-	M
Warbling Vireo	-	1	2	-	-	-	-	M
Orange-cr. Warbler	-	2	1	-	-	-	-	M
Yellow Warbler	2	8	5	-	-	1	-	S
Yellow- r. Warbler	1	-	-	-	-	-	-	W,M

Table 2 (cont.). Bird Observations along the Santa Clara River System, 1995: Santa Clara River from McBean Parkway to Old Highway along I-5.

Species	date:	4/27	5/11	5/25	6/14	6/26	7/10	status
Black-th. Grey Warbler	-	-	2	-	-	-	-	M
Common Yellowthroat	1	-	1	-	-	-	2	R*
Wilson's Warbler	-	10	3	-	-	-	-	M
Black-headed Grosbeak	6	4	6	5	8	6	6	S*
Blue Grosbeak	-	1	2	-	1	2	2	S*
Lazuli Bunting	-	-	-	-	-	-	2	S
Rufous-sided Towhee	5	2	12	3	5	3	3	R*
California Towhee	-	2	10	-	2	3	3	R*
Lark Sparrow	-	-	-	-	-	-	1	R
Song Sparrow	19	16	36	21	14	25	25	R*
Brown-headed Cowbird	17	9	9	6	5	8	8	S*
Northern Oriole	1	-	1	-	-	-	-	S*
House Finch	4	6	6	1	3	9	9	R*
Lesser Goldfinch	-	-	3	1	3	9	9	R*
Lawrence's Goldfinch	-	-	-	4	8	1	1	R*
American Goldfinch	-	-	2	-	-	-	-	W,M

Total Species:	30	35	44	29	31	31
Total Individuals:	150	178	326	152	140	196

Total Species on all visits: 59

Total Probable Breeding species: 36 (marked with *)

Status: M - Migrant; R - Resident; S - Summer Only; W - Winter Only

() = dependent young

Censuses of 5/11, 5/23 and 6/26 on north side of river,
Censuses of 4/27, 6/14 and 7/10 on south side of river.

Table 3. Bird Observations along the Santa Clara River System,
1995: Santa Clara River from Boquet Canyon Rd. to McBean
Parkway.

Species	date:	4/20	5/9	5/23	6/9	6/23	7/8	status
Great Blue Heron	-	1	-	1	-	-	-	W,M
Green Heron	-	-	1	-	-	-	-	R
Mallard	-	2	2	6	-	-	-	R*
Cooper's Hawk	-	-	1	-	-	-	-	R
Red-shouldered Hawk	-	-	-	-	-	2	-	R
Red-tailed Hawk	3	1	1	1	3	1	-	R*
California Quail	45	4	16	10	6	3	-	R*
Killdeer	-	6	-	4	4	16	-	R*
Domestic Pigeon	-	-	4	2	-	-	-	R
Mourning Dove	3	6	12	6	2	4	-	R*
Greater Roadrunner	-	-	2	-	-	-	-	R
Anna's Hummingbird	5	-	4	2	-	2	-	R*
Nuttall's Woodpecker	3	3	2	3	3	3	-	R*
Downy Woodpecker	2	1	-	1	1	-	-	R*
Northern Flicker	2	-	1	-	1	4	-	R*
Pac. Slope Flycatcher	-	-	1	-	-	-	-	M
Black Phoebe	4	2	-	2	2	6	-	R*
Ash-thr. Flycatcher	5	2	2	3	1	-	-	S*
Western Kingbird	3	2	2	2	2	2	-	S*
Horned Lark	1	-	-	-	-	-	-	R
Violet-green Swallow	-	-	3	-	-	-	-	S
N. Rough-w. Swallow	28	9	20	30	10	-	-	S*
Cliff Swallow	100	-	10	10	30	30	-	S*
Scrub Jay	5	5	5	12	7	12	-	R*
American Crow	-	10	20	6	4	9	-	R*
Common Raven	18	2	40	25	35	34	-	R*
Plain Titmouse	-	-	2	3	-	3	-	R*
Bushtit	5	-	2	2	-	8	-	R*
Bewick's Wren	12	7	5	7	3	12	-	R*
House Wren	1	-	-	3	3	-	-	R*
Western Bluebird	1	-	1	-	-	-	-	R
N. Mockingbird	-	-	2	-	-	-	-	R
Calif. Thrasher	1	2	4	2	2	2	-	R*
Cedar Waxwing	-	2	-	-	-	-	-	W,M
European Starling	3	4	3	12	4	2	-	R*
Warbling Vireo	2	-	-	-	-	-	-	M
Orange-cr. Warbler	6	1	1	-	-	-	-	M
Nashville Warbler	2	-	-	-	-	-	-	M
Yellow Warbler	-	3	2	-	1	1	-	S*
Yellow- r. Warbler	6	-	-	-	-	-	-	W,M
Black-th. grey Warbler	2	-	-	-	-	-	-	M
Macgillivray's Warbler	1	-	-	-	-	-	-	M
Common Yellowthroat	1	6	4	4	3	3	-	R*
Wilson's Warbler	2	11	6	-	-	-	-	M

Table 3. (cont.) Bird Observations along the Santa Clara River System, 1995: Santa Clara River from Boquet Canyon Rd. to McBean Parkway.

Species	date:	4/20	5/9	5/23	6/9	6/23	7/8	status
Yellow-br. Chat	-	-	-	-	-	3	2	S*
Black-headed Grosbeak	4	4	3	7	2	4		S*
Blue Grosbeak	-	-	-	2	-	1		S*
Rufous-sided Towhee	1	1	4	2	1	-		R*
California Towhee	1	2	4	5	4	6		R*
Lincoln's Sparrow	1	-	-	-	-	-		W,M
Song Sparrow	17	14	16	9	14	32		R*
White-cr. Sparrow	21	-	-	-	-	-		W
Red-winged Blackbird	-	100	50	55	8	35		S*
Western Meadowlark	1	-	-	-	-	-		R
Brown-headed Cowbird	-	7	6	9	4	8		S*
Northern Oriole	-	1	1	3	-	-		S*
House Finch	12	6	10	10	7	25		R*
Lesser Goldfinch	6	3	2	2	-	4		R*
American Goldfinch	67	-	-	-	-	-		W,M
House Sparrow	1	3	-	-	-	6		R
Total Species:	40	33	40	35	29	31		
Total Individuals:	404	233	277	262	170	282		

Total Species on all visits: 60

Total Probable Breeding species: 36 (marked with *)

Status: M - Migrant; R - Resident; S - Summer Only; W - Winter Only

() = dependent young birds

Table 4. Bird Observations along the Santa Clara River System,
1995: Santa Clara River from Power Line 2.5 miles upstream
from Boquet Canyon Rd. to Boquet Canyon Road Crossing.

Species	date:	4/20	5/9	5/23	6/9	6/23	7/8	status
Green Heron	1	-	-	-	-	1	1	R
American Bittern	-	-	1	-	-	-	-	M
Mallard	6	-	7	-	-	-	-	R*
Sharp-shinned Hawk	1	-	-	-	-	-	-	W,M
Cooper's Hawk	-	-	1	-	-	-	-	R
Red-shouldered Hawk	1	-	1	1	-	-	-	R
Red-tailed Hawk	4	4	3	3	5(2)	3	-	R*
American Kestrel	1	-	1	-	-	-	-	R
California Quail	24	36	26	91	46	31	-	R*
Killdeer	7	3	2	2(1)	3	7	-	R*
Common Snipe	2	-	-	-	-	-	-	M
Domestic Pigeon	-	-	2	40	-	-	-	R
Mourning Dove	8	17	20	14	52	56	-	R*
Greater Roadrunner	-	1	-	-	-	-	-	R
White-throated Swift	4	-	6	-	2	-	-	R
Black-ch. Hummingbird	-	-	-	2	1	3	-	S*
Anna's Hummingbird	4	14	8	4	10	7	-	R*
Nuttall's Woodpecker	4	2	4	10	3	11	-	R*
Downy Woodpecker	-	2	-	-	-	-	-	R
Northern Flicker	3	2	3	5(1)	1	-	-	R*
Black Phoebe	-	-	-	6	-	8	-	R
Ash-thr. Flycatcher	-	8	2	2	3	-	-	S*
Western Kingbird	-	7	-	11	-	5	-	S*
N. Rough-w. Swallow	6	2	5	28	8	3	-	S*
Barn Swallow	3	-	-	-	-	-	-	M
Cliff Swallow	90	-	2	85	10	2	-	S*
Scrub Jay	14	12	27	24	21	15	-	R*
American Crow	-	2	14	1	3	2	-	R*
Common Raven	19	16	41	36	21	24	-	R*
Plain Titmouse	1	2	-	2	-	3	-	R*
Bushtit	5	21	12	8	10	22	-	R*
Bewick's Wren	8	15	25	32	15	12	-	R*
House Wren	1	-	-	-	-	-	-	R
Western Bluebird	-	-	1	2	-	-	-	R
American Robin	1	-	-	-	-	-	-	R
Wrentit	3	-	1	-	-	-	-	R
N. Mockingbird	3	5	4	3	2	6	-	R*
Calif. Thrasher	-	10	4	10	3	2	-	R*
Cedar Waxwing	-	-	30	-	-	-	-	W,M
Phainopepla	-	3	1	9	5	2	-	R*
Loggerhead Shrike	-	-	-	-	1	-	-	R
European Starling	2	3	22	13	35	5	-	R*
Warbling Vireo	-	2	-	-	-	-	-	M
Yellow Warbler	1	12	7	4	3	1	-	S*
Yellow- r. Warbler	-	-	-	1	-	-	-	W,M

Table 4 (cont.). Bird Observations along the Santa Clara River System, 1995: Santa Clara River from Power Line 2.5 miles upstream from Boquet Canyon Rd. to Boquet Canyon Road Crossing.

Species	date:	4/20	5/9	5/23	6/9	6/23	7/8	status
Common Yellowthroat	1	2	3	14	2	3		R*
Wilson's Warbler	-	12	3	-	-	-		M
Yellow-br. Chat	-	-	-	2	-	-		S
Black-headed Grosbeak	4	6	2	15	2	20		S*
Blue Grosbeak	2	3	1	3	3	4		S*
Lazuli Bunting	-	4	-	8	-	-		S
Rufous-sided Towhee	6	15	22	20	23	8		R*
California Towhee	7	20	19	27	11	14		R*
Song Sparrow	11	18	43	24	34	18		R*
White-cr. Sparrow	15	-	-	-	-	-		W
Red-winged Blackbird	18	4	59	-	35	-		S*
Tricolored Redwing	-	1	-	-	-	-		S
Brewer's Blackbird	-	1	4	-	1	-		R*
Brown-headed Cowbird	8	8	8	15	9	-		S*
Hooded Oriole	-	3	-	10	-	1		S*
Northern Oriole	3	7	6(2)	32	1	5		S*
House Finch	27	4	52	33	115	24		R*
Lesser Goldfinch	11	2	4	1	-	28		R*
American Goldfinch	-	22	-	-	-	1		R,M
House Sparrow	-	2	3	-	3	-		R*

Total Species:	40	42	44	41	35	34
Total Individuals:	340	335	523	655	502	358

Total Species on all visits: 65

Total Probable Breeding species: 38 (marked with *)

Status: M - Migrant; R - Resident; S - Summer Only; W - Winter Only

Censuses of 5/9,6/9,7/8 on north side of river,
Censuses of 4/20,5/25, 6/23 on south side of river.

() = dependent young birds

Table 5. Bird Observations along the Santa Clara River System,
1995: Castaic Creek from Old Road west to Rte. 126.

Species	date:	4/29	5/11	5/28	6/14	6/28	7/10	status
Great Egret	-	1	-	-	-	-	-	W,M
Snowy Egret	1	-	-	-	-	-	-	W,M
Black-cr. Night Heron	-	-	-	-	-	2	-	R?
Green Heron	1	-	-	-	2	-	-	R*
Red-shouldered Hawk	-	-	-	-	2	1	-	R*
Red-tailed Hawk	2	1	1	1	2	-	3	R*
American Kestrel	3	1	2	2	2	-	4	R*
California Quail	15	18	35	47	18	16	-	R*
Killdeer	7	2	-	6	4	-	-	R*
Domestic Pigeon	16	19	5	18	-	-	-	R
Mourning Dove	5	6	9	13	2	10	-	R*
Barn Owl	-	1	-	-	-	-	-	R
Greater Roadrunner	-	-	1	-	-	-	-	R
Black-ch. Hummingbird	-	-	-	-	2	2	3	S*
Anna's Hummingbird	3	4	4	9	5	8	-	R*
Costa's Hummingbird	-	-	2	-	-	-	-	S
Belted Kingfisher	-	-	-	1	-	-	-	M
Acorn Woodpecker	-	-	1	-	-	-	-	R
Nuttall's Woodpecker	-	-	4	9	4	3	-	R*
Downy Woodpecker	-	1	2	5	3	-	-	R*
Hairy Woodpecker	1	2	-	-	-	-	-	R
Northern Flicker	-	-	-	1	2	-	-	R
Black Phoebe	-	-	-	1	-	1	-	R
Ash-thr. Flycatcher	7	8	6	4	5	4	-	S*
Western Kingbird	-	-	-	2	2	2	-	S*
N. Rough-w. Swallow	3	12	-	13	5	1	-	S*
Cliff Swallow	94	60	175	40	45	2	-	S*
Scrub Jay	8	15	16	13	14	9	-	R*
American Crow	2	-	2	10	8	5	-	R*
Common Raven	9	2	1	-	-	7	-	R*
Plain Titmouse	4	-	-	-	-	3	-	R
Bushtit	14	4	11	14	13	23	-	R*
Bewick's Wren	27	16	23	44	21	8	-	R*
House Wren	-	1	3	-	1	-	-	R*
Western Bluebird	-	2	-	-	-	-	-	R
Swainson's Thrush	-	2	-	-	-	-	-	S,M
American Robin	-	1	-	4	2	1	-	R
Wrentit	-	-	-	1	-	-	-	R
N. Mockingbird	-	-	1	-	-	-	-	R
Calif. Thrasher	5	6	6	8	2	1	-	R*
Phainopepla	-	1	-	-	-	-	-	R
Loggerhead Shrike	1	-	-	-	-	-	-	R
European Starling	5	8	-	6	-	-	-	R*
Bell's Vireo	-	-	2	2	-	4	-	S*
Warbling Vireo	-	1	-	-	-	-	-	M

Table 5 (cont.). Bird Observations along the Santa Clara River System, 1995: Castaic Creek from Old Road west to Rte. 126.

Species	date:	4/29	5/11	5/28	6/14	6/28	7/10	status
Yellow Warbler	15	12	16	3	2	-	-	S*
Hermit Warbler	1	-	-	-	-	-	-	M
Common Yellowthroat	3	11	7	7	9	-	-	R*
Wilson's Warbler	2	11	2	-	-	-	-	M
Yellow-br. Chat	-	-	3	5	2	-	-	S*
Western Tanager	3	14	1	-	-	-	-	M
Black-headed Grosbeak	10	13	12	14	18	10	-	S*
Blue Grosbeak	8	1	1	-	-	5	-	S*
Indigo Bunting	-	-	1	-	-	-	-	S
Lazuli Bunting	-	-	-	-	-	-	11	S
Rufous-sided Towhee	13	5	5	22	14	8	-	R*
California Towhee	21	7	15	13	9	28	-	R*
Song Sparrow	23	36	22	40	26	18	-	R*
Red-winged Blackbird	9	55	98	97	8	15	-	S*
Tricolored Redwing	11	40	-	-	-	-	-	S
Brewer's Blackbird	-	-	2	-	-	-	-	R
Brown-headed Cowbird	58	29	19	15	4	9	-	S*
Hooded Oriole	-	-	2	1	1	-	-	S*
Northern Oriole	3	6	4	4	7	1	-	S*
House Finch	2	7	9	10	11	52	-	R*
Lesser Goldfinch	-	17	-	8	4	-	-	R*
American Goldfinch	4	2	-	-	-	4	-	W,M
House Sparrow	2	-	-	-	-	3	-	R

Total Species: 39 42 39 41 34 33
Total Individuals: 421 460 531 520 276 282

Total Species on all visits: 67
Total Probable Breeding species: 38

Status: M - Migrant; R - Resident; S - Summer Only; W - Winter Only

Censuses of 4/29, 5/23, and 7/10 on north side of river,
Censuses of 5/11, 6/14, and 6/28 on south side of river.

Table 6. Bird Observations along the Santa Clara River System,
1995: San Francisquito Creek for 2 Miles above Main Channel.

Species	date:	4/27	5/13	5/27	6/8	6/23	7/8	status
Great Blue Heron	-	-	1	-	-	-	-	W,M
Green Heron	-	1	1	-	-	-	-	R
Mallard	2	-	-	-	2	1	-	R*
White-tailed Kite	-	-	1	1	-	2	-	R*
Red-shouldered Hawk	-	2	-	-	-	1	-	R*
Red-tailed Hawk	4	2	4(2)	2(2)	3	2	-	R*
California Quail	57	41	23	32	24	38	-	R*
Killdeer	21	15	16(2)	16	18	15	-	R*
Western Sandpiper	8	-	-	-	-	-	-	M
Domestic Pigeon	-	-	2	2	-	5	-	R
Mourning Dove	26	19	24	27	28	16	-	R*
Greater Roadrunner	-	-	-	1	1	-	-	R
Black-ch. Hummingbird	-	-	3	1	1	-	-	S*
Anna's Hummingbird	10	5	7	6	8	5	-	R*
Costa's Hummingbird	-	-	-	-	2	-	-	S
Nuttall's Woodpecker	5	9	6	9	6	3	-	R*
Downy Woodpecker	1	-	1	4	2	2	-	R*
Hairy Woodpecker	-	1	-	-	-	-	-	R
Northern Flicker	1	-	2	1	2	-	-	R*
Black Phoebe	1	-	4	4	3	-	-	R*
Ash-thr. Flycatcher	3	9	6	10	5	6	-	S*
Western Kingbird	4	5	3	6	4	8(3)	-	S*
N. Rough-w. Swallow	2	11	9	15	-	-	-	S
Cliff Swallow	-	-	-	2	6	25	-	S
Scrub Jay	7	11	11	13	15	23	-	R*
American Crow	11	4	6	7	1	4	-	R*
Common Raven	39	8	8	15	8	14	-	R*
Plain Titmouse	1	3	7	2	6	2	-	R*
Bushtit	5	2	20	4	2	6	-	R*
Bewick's Wren	15	14	21	17	9	28	-	R*
House Wren	4	11	5	4	3	-	-	R*
Western Bluebird	-	-	-	-	-	1	-	R
Swainson's Thrush	-	1	-	-	-	-	-	S,M
American Robin	-	-	2	-	-	-	-	R
Wrentit	-	-	-	-	1	-	-	R
N. Mockingbird	7	2	1	-	5	3	-	R*
Calif. Thrasher	6	4	4	10	6	2	-	R*
Phainopepla	-	2	4	2	4	7	-	R*
Loggerhead Shrike	-	2	1	3	-	2	-	R*
European Starling	18	9	18	21	33	3	-	R*
Bell's Vireo	-	-	-	1	-	-	-	S
Yellow Warbler	5	5	3	7	1	1	-	S*
Yellow- r. Warbler	1	-	-	-	-	-	-	W,M

Table 6 (cont.). Bird Observations along the Santa Clara River System, 1995: San Francisquito Creek for 2 Miles above Main Channel.

Species	date:	4/27	5/13	5/27	6/8	6/23	7/8	status
Common Yellowthroat		8	9	4	4	6	5	R*
Wilson's Warbler		3	5	1	-	-	-	M
Yellow-br. Chat		3	5	3	4	1	2	S*
Western Tanager		-	1	1	-	-	-	M
Black-headed Grosbeak		7	9	11	20	3	8	S*
Blue Grosbeak		2	4	1	2	-	1	S*
Lazuli Bunting		-	2	-	3	-	-	S
Rufous-sided Towhee		8	2	5	16	5	8	R*
California Towhee		21	7	12	19	14	18	R*
Song Sparrow		30	30	29	60	26	10	R*
Yellow-h. Blackbird		1	-	1	-	-	-	M
Red-winged Blackbird		21	25	13	30	27	7	S*
Western Meadowlark		6	3	-	-	-	-	R
Brewer's Blackbird		12	-	14	-	5	8	R*
Brown-headed Cowbird		11	20	17	11	11	3	S*
Northern Oriole		7	8	6	10	11	8	S*
House Finch		10	10	21	14	25	37	R*
Lesser Goldfinch		4	-	7	2	6	3	R*

Total Species:	42	41	47	43	42	41
Total Individuals:	418	338	374	442	349	347

Total Species on all visits: 61

Total Probable Breeding species: 41 (marked with *)

Status: M - Migrant; R - Resident; S - Summer Only; W - Winter Only

() = dependent young birds

Table 7. Bird Observations along the Santa Clara River System,
1995: South Fork from Rte. 126 to McBean Parkway.

Species	date:	5/13	6/20	status
Great Blue Heron	-	1	M	
Great Egret	-	1	M	
Green Heron	3	-	R	
Mallard	9	3	R*	
Turkey Vulture	1	-	M	
Red-shouldered Hawk	1	-	R	
Red-tailed Hawk	2	2	R*	
American Kestrel	-	1	R	
California Quail	6	2	R*	
Killdeer	4	13	R*	
Domestic Pigeon	6	-	R	
Mourning Dove	18	10	R*	
Greater Roadrunner	3	-	R*	
Vaux's Swift	4	-	M	
Black-ch. Hummingbird	2	1	S*	
Anna's Hummingbird	8	1	R*	
Nuttall's Woodpecker	1	1	R*	
Downy Woodpecker	-	1	R	
Black Phoebe	4	10	R*	
Ash-thr. Flycatcher	4	2	S*	
Western Kingbird	3	1	S*	
N. Rough-w. Swallow	8	14	S*	
Cliff Swallow	22	18	S*	
Scrub Jay	6	8	R*	
American Crow	2	5	R*	
Common Raven	14	11	R*	
Bushtit	2	-	R	
Bewick's Wren	4	7	R*	
Swainson's Thrush	1	-	S,M	
N. Mockingbird	4	-	R	
Calif. Thrasher	2	3	R*	
European Starling	6	3	R*	
Orange-cr. Warbler	2	-	M	
Yellow Warbler	5	1	S*	
Wilson's Warbler	9	-	M	
Western Tanager	7	-	M	
Black-headed Grosbeak	1	-	S	
Rufous-sided Towhee	2	1	R*	
California Towhee	7	2	R*	
Song Sparrow	5	4	R*	
Red-winged Blackbird	3	11	S*	
Brewer's Blackbird	22	4	R*	

Table 7 (cont.). Bird Observations along the Santa Clara River System, 1995: South Fork from Rte. 126 to McBean Parkway.

<u>Species</u>	<u>date:</u>	<u>5/13</u>	<u>6/20</u>	<u>status</u>
Brown-headed Cowbird		2	11	S*
Hooded Oriole		1	-	S*
Northern Oriole		-	3	S*
House Finch		26	14	R*
Lesser Goldfinch		2	2	R*
House Sparrow		8	2	R*

Total Species: 43 34

Total Individuals: 252 175

Total Species on all visits: 48

Total Probable Breeding species: 32

Status: M - Migrant; R - Resident; S - Summer Only; W - Winter Only

Table 8. Bird Observations along the Santa Clara River System,
1995: South Fork from Newhall Creek to Rte. 126.

Species	date:	5/13	6/20	status
Green Heron		1	-	R
Turkey Vulture		1	-	M
Red-tailed Hawk		-	2	R
California Quail		6	6	R*
Killdeer		6	3	R*
Domestic Pigeon		6	-	R
Mourning Dove		25	2	R*
Vaux's Swift		2	-	M
Black-ch. Hummingbird		2	-	S*
Anna's Hummingbird		8	4	R*
Black Phoebe		2	3	R*
Western Kingbird		2	-	S*
Rough-w. Swallow		4	-	S
Cliff Swallow		-	1	S
Scrub Jay		4	13	R*
American Crow		2	-	R
Common Raven		7	1	R*
Bushtit		4	-	R*
Bewick's Wren		13	7	R*
Swainson's Thrush		8	-	S,M
N. Mockingbird		4	3	R*
European Starling		10	4	R*
Solitary Vireo		1	-	M
Orange-cr. Warbler		2	-	M
Yellow Warbler		7	-	S
Wilson's Warbler		6	-	M
Western Tanager		17	-	M
California Towhee		2	4	R*
Song Sparrow		7	6	R*
Brewer's Blackbird		11	3	R*
Brown-headed Cowbird		2	-	S*
Hooded Oriole		1	-	S
House Finch		40	20	R*
Lesser Goldfinch		-	6	R*
House Sparrow		14	1	R*

Total Species: 32 18

Total Individuals: 228 108

Total Species on all visits: 35

Total Probable Breeding species: 20

Status: M - Migrant; R - Resident; S - Summer Only; W - Winter Only