
**Guthrie, D.A., "Bird Surveys along a Portion of the Santa Clara River and Its
Tributaries Upstream from the Castaic Creek Confluence, near Valencia
California" (2005; 2005A)**

Original in Matt Carpenter's
Office

1021051603 2005

**BIRD SURVEYS ALONG A PORTION OF THE
SANTA CLARA RIVER AND ITS TRIBUTARIES
UPSTREAM FROM THE CASTAIC CREEK CONFLUENCE,
NEAR VALENCIA, CALIFORNIA, 2005**

Prepared for:

Mark Subbotin
Valencia Corporation
23823 Valencia Blvd.
Valencia, Ca. 91355

Prepared by:

Daniel A. Guthrie
W.M. Keck Science Center
925 N. Mills Ave
Claremont Ca. 91711
(909) 607-2836
dguthrie@jsd.claremont.edu

REVISED

Oct 5, 2005

Bird Surveys along a Portion of the Santa Clara River Upstream from the Castaic Creek Confluence, near Valencia, California, 2005

Prepared by: Daniel A. Guthrie
W.M. Keck Science Center
925 N. Mills Ave
Claremont Ca. 91711
(909) 607-2836

Nature and Scope of Surveys

During the spring and early summer of 2005 surveys were conducted along a section of the Santa Clara River and its tributaries near Valencia, California (Figure 1). Surveys were focused on determining presence or absence of yellow-billed cuckoo, least Bell's vireo and southwestern willow flycatcher, and followed U.S. Fish and Wildlife Service Survey Protocols for the latter two species. Numbers of all species observed were noted, and, in addition to the three species noted above, special attention was placed on locating species considered rare and endangered or of Special Concern, and on determining numbers of brown-headed cowbirds.

Each survey was conducted on foot by observers well acquainted with visual, auditory and behavioral characteristics of southern California birds. Survey routes were designed to cover all areas of each section of the river, with emphasis placed on wetter habitats where least Bell's vireos and other sensitive riparian species are most likely to occur. All surveys occurred between 6:00 and 10:00 a.m. If focus species (yellow-billed cuckoo, least Bell's vireo, and southwestern willow flycatcher), were not visually observed, tapes of their calls were played in an attempt to elicit a response. Personnel for all surveys were Daniel A. Guthrie and Judith A. Sugden, both working under Federal Fish and Wildlife Service Permit number TE810394-2, issued under section 10(a)(1)(A) of the Endangered Species Act and under an MOU from State of California Department of Fish and Game, dated April 23, 2003.

To facilitate surveys and observe the coverage guidelines for focus species, the area was divided into eight sections (Figure 1). Delineation of the eight areas and comments on each follow. Surveys of all sections of the river system were conducted five times during the nesting season and followed the Revised Protocol (Fish And Wildlife Service, July 2000) for southwestern willow flycatcher. Several sections of the river (Areas 4, 6-8) had little running water and no development of wet riparian vegetation and were not considered suitable habitat for least Bell's vireo. However, areas 1-3 and 5 had flowing water and wet riparian vegetation. These sections were surveyed according to the protocol for least Bell's vireo as outlined by the Fish and Wildlife Service. This latter protocol requires 8 surveys between April 10 and July 31st, at least 10 days apart.

Habitat Condition and Bird Observations.

The riparian zone of the Santa Clara River, as described here, consists of two major habitat types, a wet riparian zone and a dry riparian woodland. The wet riparian zone consists of obligatory wet plants such as cattail and watercress found in continually moist soils along the active river channel and some willow, tamarisk and *Baccharis* shrubs also found in this zone. This zone undergoes regular scouring in the winter which removes most annual vegetation and, depending on the severity of the flooding, some of the larger plants. The severe spring flooding in 2005 removed nearly all wet riparian vegetation and there was little rejuvenation during the survey period.

The dry riparian zone consists of larger trees and shrubs further back from the active river which obtain moisture through their deep root system. The severe flooding of 2005 removed large sections of this zone, but caused good growth of remaining trees by restoring ground water supplies

Observations of all birds are shown in Tables 1-8. The numbers shown are of birds seen and heard, with heard individuals forming the majority of the observations. Numbers vary between censuses. Bird activity varies with season. Different species breed at different times of the year. In general, species are most easily observed when they are actively defending territories by song during the establishment of breeding pairs. Once pairs are established and nesting begins song often decreases and the numbers of birds observed, therefore, also decreases. After young leave the nest, numbers observed may increase. Thus, for most resident species, numbers of adult birds are most accurately censused in April and May, when territorial activity is at a maximum. A few species such as Anna's hummingbird that nest early in the season may be underestimated. Many species that nest in the area also migrate through the area to more northern portions of their ranges. Thus, numbers of nesting species observed in May, which include migratory birds passing through the area, do not give an accurate count of actual resident birds.

Area 1 (Table 1). Santa Clara River; The Old Road Bridge to the mouth of Castaic Creek.

Length of section, 3.5 miles. The Santa Clara River flows continuously in this section, receiving most of its flow from the Valencia wastewater outfall near the upstream end of this section and from some irrigation runoff from Magic Mountain and agricultural fields along the north side.

Flooding removed much wet riparian vegetation along the northern bank of the river along this section removing much vireo habitat. Vireo numbers, however, remained about the same as in previous years.

Area 2 (Table 2). Santa Clara River; McBean Parkway downstream to The Old Road.

Length of section, 1.4 miles. There was no flow from McBean Parkway west to the pipeline crossing where seepage within the stream channel began a small flow which continued to

The Old Road at the end of this section. Flooding removed much of the wet willow forest near the mouth of San Francisquito Creek.

Area 3 (Table 3). Santa Clara River; Bouquet Canyon Road downstream to McBean Parkway

Length of section, 1.2 miles. Water, supplied by the Saugus wastewater outfall at the Bouquet Canyon Bridge and a small flow from Bouquet Canyon provided water only to the upper quarter mile of this section. The remainder was dry throughout the survey period.

Area 4 (Table 4). Santa Clara River; Bouquet Canyon Road upstream to DWP transmission lines.

Length of section, 2.3 miles. The river channel in this section consists of a broad, flat, dry wash with narrow margins of dry riparian woodland. Within the channel are areas of coastal sage scrub habitat. This section of the Santa Clara River in past years has been wet only briefly during spring rains. This year there was continuous flow in this section in May and June. By July flow had stopped with water restricted to a wet section near the midpoint of the survey area. Wet riparian annual plants were well developed here and attracted usual riparian species such as song sparrow and yellowthroat.

Rufous-crowned sparrow and loggerhead shrike, resident on hillsides along the river, were observed visiting the stream channel. Aside from migrants, most of the other birds observed in this section are characteristic of coastal sage and dry riparian woodlands.

Area 5 (Table 5). Castaic Creek; Route 126 to Interstate 5.

Length of section, 1.8 miles. Flow continued along Castaic Creek throughout the survey period, but extensive spring flooding resulted removal of all wet riparian vegetation, which did not recover by July. Cliff and rough-winged swallows nested under the three bridges that cross this section of the river.

Area 6 (Table 6). San Francisquito Creek; Santa Clara River upstream to Copper Hill Drive Crossing.

Length of section, 2.5 miles. Water flowed the length of this section in April and May but by June was restricted to the area above the Decoro Bridge and by July to the area just below Copper Hill Bridge. Barn owls nested under the Copper Hill and Decoro Bridges and a Cooper's hawk nested about ½ mile south of the Copper Hill crossing.

Area 7 (Table 7). South Fork of the Santa Clara River; McBean Parkway to Magic Mountain Parkway (Route 126).

Length of section, 1.0 miles. The channel along this section of the South Fork is narrow and very sandy. Along most of this section vegetation is restricted to a narrow band of dry woodland at each side of the channel and a few pockets of wet vegetation supported by runoff from

adjacent development. Although there was no surface water flow during the survey period, replenishment of subterranean flow rejuvenated much of the dry riparian vegetation.

Area 8 (Table 8). South Fork of the Santa Clara River, Route 126 upstream to Newhall Creek.

Length of section, 1.4 miles. This section of the river consists of a wide sandy channel intersected by several concrete sills designed to restrict sand movement and flood damage. The river is entirely bordered by developed areas but contains small islands of dry riparian vegetation and some wet riparian areas formed by runoff from culverts along the sides of the creek. Spring floods damaged some of the flood control barriers and, although there was no surface water flow during the survey period, replenishment of subterranean flow rejuvenated much of the dry riparian vegetation.

Comments on Threatened and Endangered Species

Yellow-billed Cuckoo (*Coccyzus americanus*)

The Yellow-billed Cuckoo is listed as a State Endangered Species. Despite playing taped calls of this species during June and July surveys, no individuals of this species were observed in 2005.

Southwestern Willow Flycatcher (*Empidonax traillii extimus*)

This subspecies is listed as Federally Endangered under the Federal Endangered Species Act. Willow flycatchers were once widespread in wet riparian woodland in southern California but now fewer than 70 pair remain, with the major concentrations being along the Kern River and the Santa Margarita River in San Diego County. Following the Revised Protocol (Fish And Wildlife Service, July 2000) five surveys (see tables 1-8 for dates) were conducted specifically for southwestern willow flycatcher. All surveys occurred between 6:00 and 10:00 am. and used taped calls to elicit a response if flycatchers were not first observed.

Two willow flycatchers were observed, a mile above Bouquet Canyon Crossing on May 20th and one along Castaic Creek on May 23rd. The birds could not be relocated on subsequent visits to the area.

Willow flycatchers are fairly common migrants through southern California and most of the migrants are believed to be of the more northern common subspecies of willow flycatcher, *E. t. brewsteri*, which breeds throughout southern Canada and the northern United States, rather than representatives of the southwestern subspecies *E. t. extimus*. Southwestern willow flycatchers are positively identified primarily by nesting within the geographic area of their range or by measurements of in hand specimens. Both observations in 2005 were at a time when the northern subspecies is migrating through the area, and lacking any subsequent evidence of nesting, this observations of a willow flycatcher cannot be positively identified as belonging to the southwestern form of willow flycatcher.

The report forms required for this species are attached and will be forwarded to the Ventura Office of the U.S. Fish and Wildlife Service.

Least Bell's Vireo (*Vireo bellii pusillus*)

Surveys of the wet riparian areas (Areas 1-3,5) followed U.S. Fish and Wildlife Service Guidelines for least Bell's vireo. Eight surveys were conducted in each area between April 10 and July 31 (see Tables 1-3,5 for dates). All surveys occurred between 6:00 and 10:00 am. . The least Bell's vireo is a very vocal species and most birds were located without the use of taped calls. However, tapes were used to elicit responses in early spring, before vireo arrival, in late summer, when vireos were less vocal, and in areas of marginal habitat or where vireos were expected from previous sightings but could not be heard. A calling vireo was considered a territorial male. If a second, silent bird was observed in the same area, a pair was considered to be present. However, to avoid disturbance, no efforts were made to find nests, locate with certainty females in territories, or to locate fledged young in established territories. Numbers of vireos shown in the tables are actual numbers of birds observed. These numbers include all vireos, both singing and silent. In order to avoid disturbing vireos, no special efforts were made to determine nesting success or presence of leg bands once birds were observed. However, at each location where vireos were found, they were observed at least once, and no leg bands were observed.

Least Bell's vireos were regularly observed along the Santa Clara River at Castaic Junction in an extensive stand of willows (Figure 2). A survey on June 27th found 8 birds, four in one area and these thought to include young of the year. Most surveys found 4 pair of vireos. The habitat used by vireos in previous years was heavily damaged by flooding in 2005 resulting in a great reduction of suitable habitat along this section of the river.

Comments on Sensitive Species

Great Blue Heron (*Ardea herodias*)

Great blue herons are listed on the California Natural Diversity Data Base as a species that warrants monitoring. Herons were occasionally observed hunting along the river and flying over the river corridor between ponds in the adjacent housing developments and golf courses.

White-tailed Kite (*Elanus leucurus*)

This species, formerly the black-shouldered kite, is considered a Species of Special Concern by the State of California. Two pair of kites nested and fledged young along the Santa Clara River east of Bouquet Canyon Bridge. A third pair nested in dry riparian woodland just north and west of the Magic Mountain overflow parking lot.

Cooper's Hawk (*Accipiter cooperii*)

Cooper's hawk is considered a Species of Special Concern by the State of California. A Cooper's Hawk nested along San Francisquito Creek a little below the Copper Hill Crossing. Nesting also occurred in the dry riparian forest along Castaic Creek. Immature birds were observed in both places, indicating successful fledging of young.

California Horned Lark (*Eremophila alpestris actia*)

This is a California Special Concern species. Although none were observed nesting on the study site, horned larks are ground nesters that prefer bare hillsides and abandoned fields. A few were observed feeding on bare fields along Castaic Creek and near the main river at Castaic Junction.

Loggerhead Shrike (*Lanius ludovicianus*)

This is a California Special Concern species. Shrikes are resident in the coastal sage scrub areas adjacent to the Santa Clara River. A single bird was observed June 27th along the main river between McBean and Bouquet Canyon Crossing and another single bird was observed on July 14th a mile below the Copper Hill crossing on San Francisquito Creek. A pair of shrikes were observed on May 20th hunting along the river above Bouquet Canyon Crossing. These birds could not be relocated on subsequent surveys. In all cases, the shrikes were probably nesting in coastal sage areas adjacent to the river.

Yellow Warbler (*Dendroica petechia*)

The yellow warbler is considered a Species of Special Concern by the State of California. Yellow warblers prefer wet riparian habitat but are also found in large cottonwoods in drier riparian areas. Singing yellow warblers were observed throughout the survey period along sections 1, 2 (main river from McBean Parkway to Castaic Creek) and 5 (Castaic Creek) and probably nested in these areas. Observations in sections 3, 4, 6-8 only occurred during the period when yellow warblers are migrating through the area.

Yellow-breasted Chat (*Icteria virens*)

The yellow-breasted chat is considered a Species of Special Concern by the State of California. Chats were rarely observed along the main river between McBean crossing and the mouth of Castaic Creek.

Southern California Rufous-crowned Sparrow (*Aimophila ruficeps canescens*)

This species is considered a California Special Concern species by the Department of Fish and Game and is also a Federal Special Concern species. Two birds were observed once above the Bouquet Canyon Rd crossing, an area where there is extensive coastal sage habitat adjacent to the river in which this species breeds.

Comments of Brown-headed Cowbirds

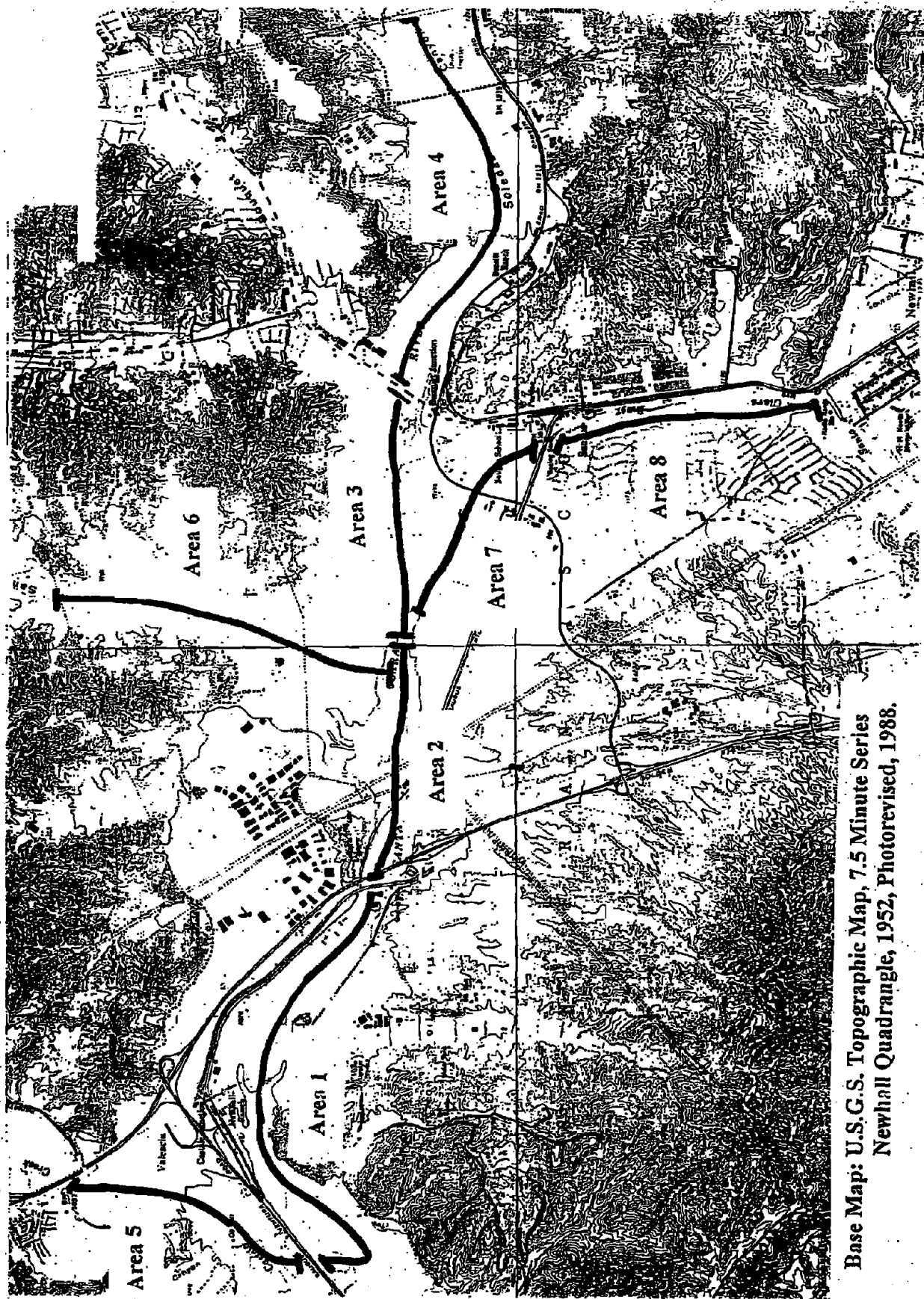
Although not a Species of Concern, comments about this species are warranted due to its influence on several endangered species. Cowbirds were regularly observed along all sections of the Santa Clara River, usually flying along the riparian corridor searching for either mates or potential nests to parasitize. Cowbird females often responded to taped calls of least Bell's Vireo.

Summary

No yellow-billed cuckoos were observed in 2005. Two willow flycatchers were observed during the migration period for this species. Based on the behavior of these birds and failure to find them on subsequent visits, they are thought to be migrants passing through the area. It is not known which subspecies these birds represented. Four pairs of Least Bell's vireos were regularly observed at Castaic Junction. Additional territorial males observed early in the season could not be relocated in later surveys and a late survey observed several young birds.

Four riparian Species of Concern, white-tailed kite, Cooper's hawk, yellow warbler and yellow-breasted chat nested in small numbers along wet sections of the river. Other Species of Concern include one migrant and/or wintering species; great blue heron and three visitors from nearby coastal sage scrub habitat; horned lark, loggerhead shrike and rufous-crowned sparrow. Cowbirds were observed along all sections of the river and were most numerous along the wet sections of the river where the wet riparian species that they parasitize were present.

Figure 1. Survey Areas along the Santa Clara River and Tributaries.



Base Map: U.S.G.S. Topographic Map, 7.5 Minute Series
Newhall Quadrangle, 1952, Photorevised, 1988.

Figure 2. Sightings of Willow Flycatcher (not identified as to subspecies), 2005

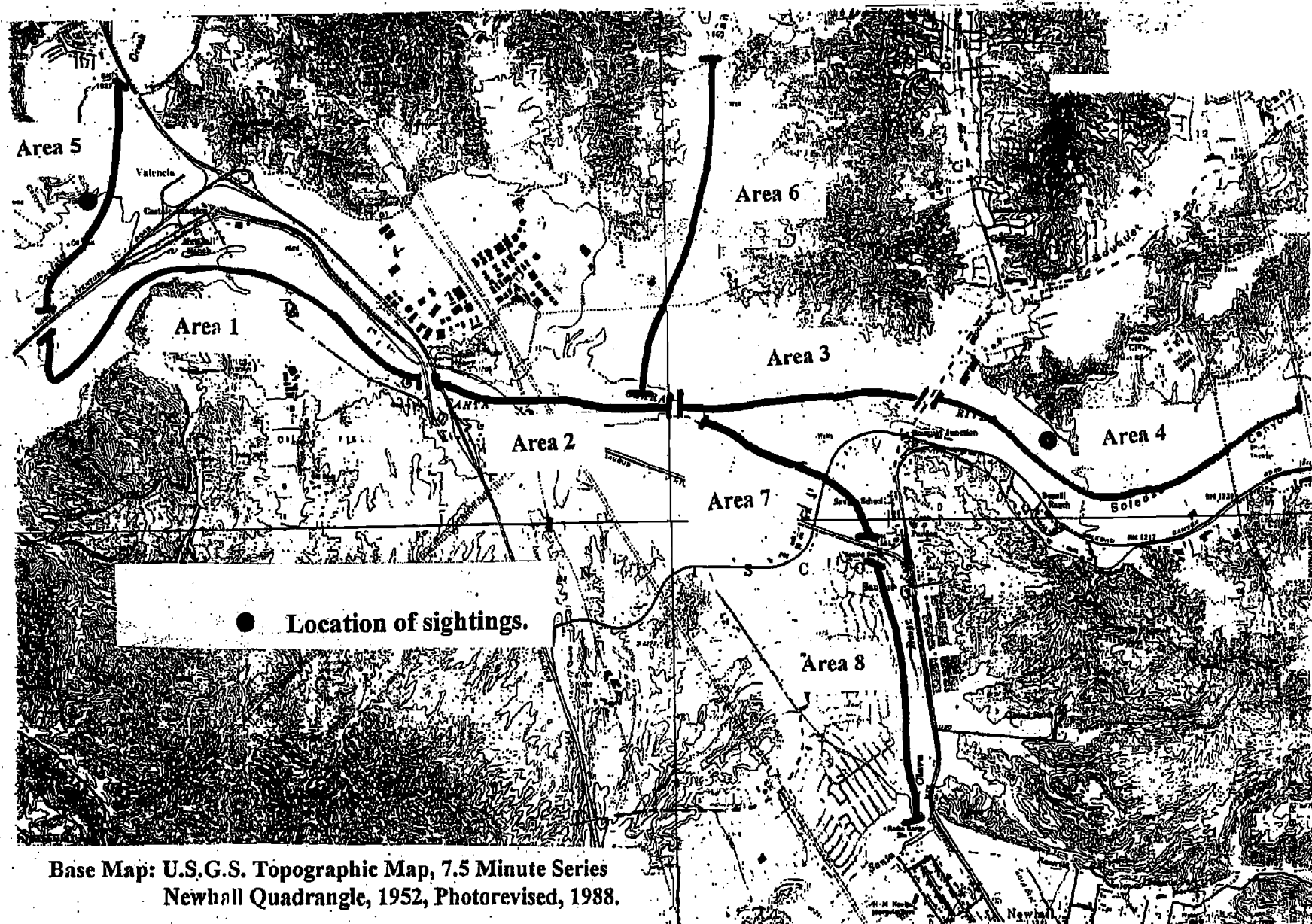
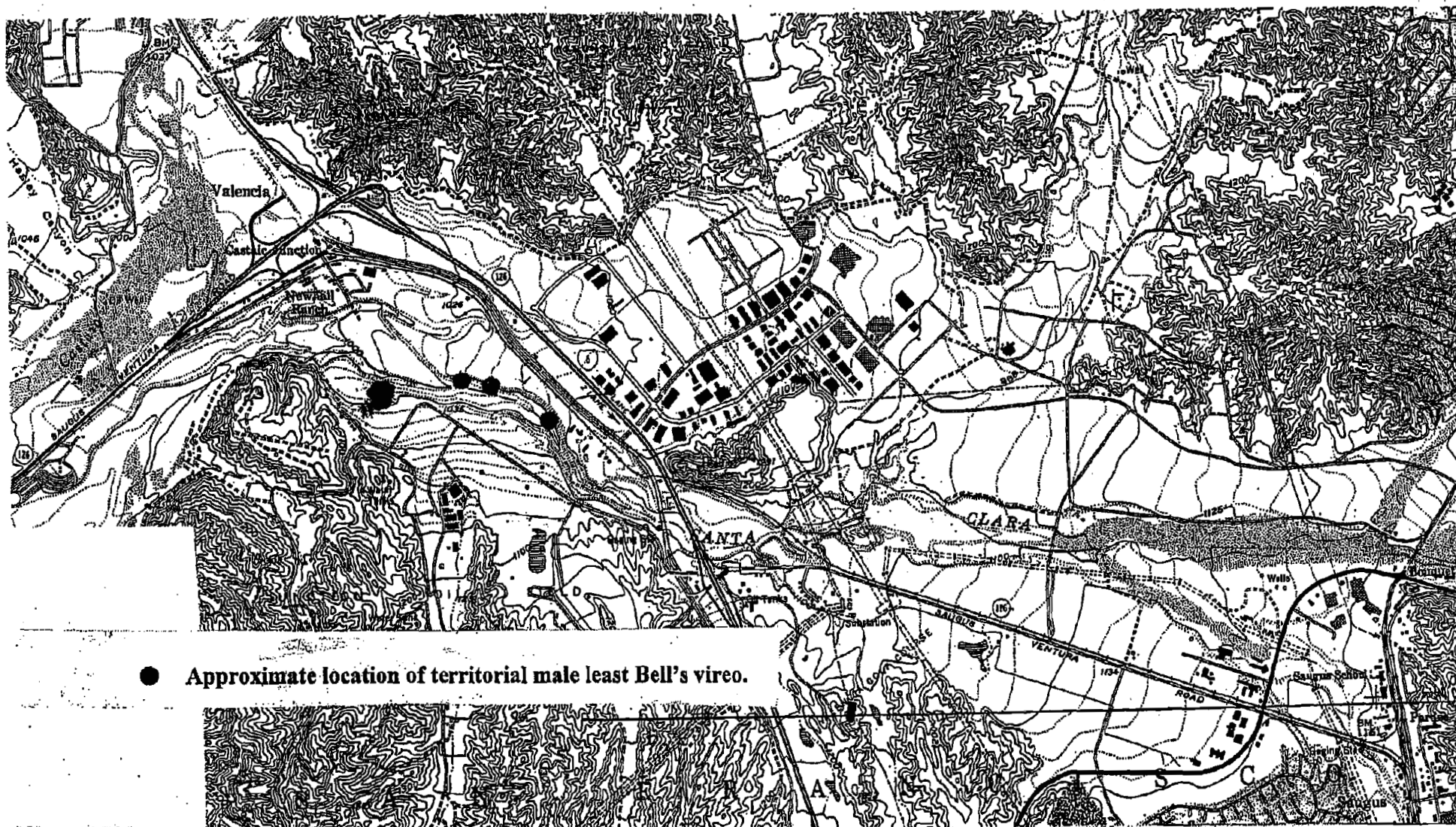


Figure 3. Least Bell's Vireo Sightings in 2005, Castaic Junction



Base Map: U.S.G.S. Topographic Map, 7.5 Minute Series
Newhall Quadrangle, 1952, Photorevised, 1988

Table 1. BIRDS OF THE SANTA CLARA RIVER BASIN, 2005: Santa Clara River from The Old Road downstream to the mouth of Castaic Creek.

Endangered Species and Species of Concern in bold

<u>SPECIES</u>	<u>STAT.</u>	<u>Dates of Surveys</u>							
		<u>4/29</u>	<u>5/11</u>	<u>5/25</u>	<u>6/5</u>	<u>6/15</u>	<u>6/27</u>	<u>7/5</u>	<u>7/17</u>
Great Blue Heron	m,w	0	1	0	0	0	0	0	0
Green Heron	r	3	3	2	2	0	1	0	0
Black-crowned Night-heron	m,w	1	0	0	0	0	0	4	0
Turkey Vulture	s	0	1	0	1	0	1	0	0
Mallard	r	5	6	16	3	12	1	1	9
White-tailed Kite	r	0	2	4	4	3	0	0	0
Cooper's Hawk	r	0	1	0	0	0	0	5	0
Red-shouldered Hawk	r	0	4	2	6	7	4	4	2
Red-tailed Hawk	r	2	5	3	1	3	8	2	5
American Kestrel	r	3	1	1	2	0	2	0	2
California Quail	r	42	20	27	9	5	18	34	23
Killdeer	r	6	19	20	8	24	22	34	19
Spotted Sandpiper	s	0	2	0	0	0	0	3	0
Rock Dove	r	0	9	0	3	25	0	2	0
Mourning Dove	r	12	24	15	22	38	69	27	24
White-th. Swift	r	8	0	0	1	0	0	0	0
Black-ch. Hummingbird	s	0	1	0	2	0	0	0	0
Anna's Hummingbird	r	5	12	5	5	4	18	13	8
Belted Kingfisher	m,w	0	0	0	0	0	0	0	1
Nuttall's Woodpecker	r	8	12	12	11	14	23	18	14
Downy Woodpecker	r	7	8	8	6	10	15	9	8
Hairy Woodpecker	r	0	3	0	2	0	3	0	5
Northern Flicker	r	1	2	0	0	0	0	0	0
Pacific Slope Flycatcher	s	0	0	2	1	4	2	0	0
Black Phoebe	r	1	10	13	15	21	23	20	23
Ash-throated Flycatcher	s	19	19	16	14	21	25	18	6
Western Kingbird	s	0	0	2	0	0	12	5	10
Horned Lark	r	0	0	0	0	0	0	0	30
Bell's Vireo	s	4	5	3	3	2	8	1	4
Warbling Vireo	m	0	1	0	0	0	0	0	0
Western Scrub Jay	r	10	20	18	12	29	26	22	17
American Crow	r	16	13	7	8	8	1	10	7
Common Raven	r	40	31	29	10	44	37	36	30
Tree Swallow	s	0	3	2	6	9	5	5	6
Violet-green Swallow	s	0	1	2	2	2	9	12	4
N. Rough-winged Swallow	s	94	26	16	9	78	39	14	4
Cliff Swallow	s	32	32	6	38	146	27	47	27
Barn Swallow	s	5	0	0	8	1	3	8	0
Oak Titmouse	r	5	14	7	16	32	38	18	14
Bushtit	r	4	42	18	22	6	32	92	14
White-breasted Nuthatch	r	0	2	4	2	0	2	0	0
Bewick's Wren	r	70	110	64	50	89	53	63	64
House Wren	r	19	11	13	11	22	16	8	0

Table 1 (cont.). BIRDS OF THE SANTA CLARA RIVER BASIN, 2005: Santa Clara River from The Old Road downstream to the mouth of Castaic Creek.

Endangered Species and Species of Concern in bold

<u>SPECIES</u>	<u>STAT.</u>	<u>Dates of Surveys</u>							
		<u>4/29</u>	<u>5/11</u>	<u>5/25</u>	<u>6/5</u>	<u>6/15</u>	<u>6/27</u>	<u>7/5</u>	<u>7/17</u>
Western Bluebird	r	4	15	16	6	12	3	16	19
American Robin	r	0	0	0	0	2	0	0	0
Wrentit	r	4	3	6	1	2	10	8	1
Northern Mockingbird	r	0	0	2	0	0	0	0	0
California Thrasher	r	2	0	2	5	7	3	1	4
European Starling	r	13	2	9	5	1	4	4	50
Phainopepla	r	0	3	3	1	5	0	4	0
Orange-cr. Warbler	s,m	4	6	0	1	0	0	0	0
Yellow Warbler	s,m	22	20	24	17	20	6	11	10
Common Yellowthroat	r	27	56	29	20	40	25	27	49
Wilson's Warbler	m	1	24	9	2	0	0	0	0
Yellow-breasted Chat	s	0	0	0	0	1	0	0	0
Western Tanager	m	3	30	0	0	0	0	0	0
Spotted Towhee	r	40	31	18	14	25	15	47	16
California Towhee	r	65	50	21	15	26	22	48	41
Lark Sparrow	r	0	1	0	0	0	4	0	17
Song Sparrow	r	81	106	115	78	88	92	29	0
Black-headed Grosbeak	s	43	39	21	20	22	31	12	15
Blue Grosbeak	s	0	1	0	2	0	0	1	8
Lazuli Bunting	s	1	0	0	1	3	0	1	3
Red-winged Blackbird	s	2	5	20	6	7	0	80	230
Western Meadowlark	r	4	0	0	0	0	0	0	0
Brown-headed Cowbird	s	1	4	13	5	21	9	12	8
Hooded Oriole	s	4	0	1	0	0	0	3	0
Bullock's Oriole	s	2	3	1	22	5	14	1	2
House Finch	r	15	26	11	8	55	62	112	54
American Goldfinch	w,m	0	0	2	0	0	0	0	0
Lesser Goldfinch	r	1	17	0	0	2	2	5	0

Status: m, migrant; r, resident; s, summer only; w, winter numbers in parentheses are nestlings.

Table 2. BIRDS OF THE SANTA CLARA RIVER BASIN, 2005: Santa Clara River from McBean Highway to The Old Road.

Endangered Species and Species of Concern in bold

SPECIES	STAT.	Dates of Surveys							
		4/29	5/11	5/25	6/5	6/15	6/27	7/7	7/17
Great Blue Heron	m,w	0	0	0	1	0	0	0	0
Mallard	r	2	0	0	3	4	2	13	1
White-tailed Kite	r	1	1	0	0	0	0	0	0
Cooper's Hawk	r	0	0	0	0	0	1	0	0
Red-shouldered Hawk	r	0	2	0	1	1	1	1	0
Red-tailed Hawk	r	0	1	0	0	1	3	3	1
American Kestrel	r	0	0	0	1	0	0	0	0
California Quail	r	10	14	17	4	5	12	4	10
Killdeer	r	6	2	7	12	9	13	11	10
Mourning Dove	r	2	2	4	4	4	6	6	6
Greater Roadrunner	r	0	0	1	0	0	0	1	0
White-th. Swift	r	0	0	8	10	2	0	0	0
Anna's Hummingbird	r	1	1	1	0	0	0	1	0
Acorn Woodpecker	r	0	0	0	0	0	1	1	0
Nuttall's Woodpecker	r	6	5	7	5	4	3	8	4
Downy Woodpecker	r	0	0	1	0	0	0	2	1
Hairy Woodpecker	r	0	1	0	0	0	0	0	0
Pacific Slope Flycatcher	s	0	1	0	0	0	0	0	0
Black Phoebe	r	0	3	8	0	4	9	8	11
Say's Phoebe	r	0	0	0	0	3	0	2	1
Ash-throated Flycatcher	s	2	3	5	0	4	7	2	2
Warbling Vireo	m	0	1	0	0	0	0	0	0
Western Scrub Jay	r	5	5	6	7	5	11	13	10
American Crow	r	5	2	0	0	0	4	2	3
Common Raven	r	4	2	6	8	7	3	6	1
N. Rough-winged Swallow	s	14	0	0	14	10	13	0	0
Cliff Swallow	s	16	12	20	68	9	6	0	8
Barn Swallow	s	1	0	0	0	0	0	1	3
Oak Titmouse	r	0	0	1	0	1	2	6	0
Bushtit	r	3	4	7	0	0	10	15	0
Bewick's Wren	r	17	28	22	20	14	5	6	4
House Wren	r	14	14	17	6	4	2	0	0
Western Bluebird	r	0	2	5	1	0	7	9	10
Wrentit	r	0	0	0	0	1	0	0	1
Northern Mockingbird	r	2	3	0	0	2	1	0	0
California Thrasher	r	3	2	2	0	0	0	2	1
European Starling	r	15	13	4	6	5	7	4	4
Cedar Waxwing	w,m	1	8	0	0	0	0	0	0
Phainopepla	r	0	2	2	0	0	4	0	0
Yellow Warbler	s,m	6	2	2	2	0	1	0	0
Common Yellowthroat	r	5	1	1	0	0	0	2	2
Wilson's Warbler	m	2	2	1	0	0	0	0	0
Yellow-breasted Chat	s	0	0	0	0	1	0	0	0

Table 2 (cont.). BIRDS OF THE SANTA CLARA RIVER BASIN, 2005: Santa Clara River from McBean Highway to The Old Road.

Endangered Species and Species of Concern in bold

<u>SPECIES</u>	<u>STAT.</u>	<u>Dates of Surveys</u>							
		<u>4/29</u>	<u>5/11</u>	<u>5/25</u>	<u>6/5</u>	<u>6/15</u>	<u>6/27</u>	<u>7/7</u>	<u>7/17</u>
Spotted Towhee	r	7	7	5	5	8	7	4	3
California Towhee	r	4	8	14	6	0	2	4	4
Lark Sparrow	r	0	0	0	0	0	0	10	0
Song Sparrow	r	16	24	18	37	12	3	8	0
Black-headed Grosbeak	s	14	17	17	14	6	5	6	2
Red-winged Blackbird	s	0	2	0	2	0	6	3	0
Brown-headed Cowbird	s	5	4	0	5	1	0	0	2
Bullock's Oriole	s	0	3	0	0	1	0	0	0
House Finch	r	7	6	6	28	17	8	24	29
Lesser Goldfinch	r	0	0	0	2	0	2	0	0

Status: m, migrant; r, resident; s, summer only; w, winter
numbers in parentheses are nestlings.

Table 3. BIRDS OF THE SANTA CLARA RIVER BASIN, 2005: Santa Clara River from Boquet Canyon Bridge to McBean Parkway Bridge

Endangered Species and Species of Concern in bold

<u>SPECIES</u>	<u>STAT.</u>	<u>Dates of Surveys</u>							
		<u>4/29</u>	<u>5/11</u>	<u>5/25</u>	<u>6/5</u>	<u>6/15</u>	<u>6/27</u>	<u>7/7</u>	<u>7/17</u>
Great Blue Heron	r	0	0	0	0	0	0	0	1
Mallard	r	0	0	0	0	1	0	0	2
Cooper's Hawk	r	0	0	0	0	0	1	1	0
Red-tailed Hawk	r	0	0	0	0	2	0	1	2
California Quail	r	10	4	10	8	4	6	9	14
Killdeer	r	2	4	2	0	5	2	2	3
Mourning Dove	r	1	2	2	6	1	0	5	6
Anna's Hummingbird	r	1	0	0	0	2	2	2	4
Nuttall's Woodpecker	r	1	0	2	2	2	5	4	3
Downy Woodpecker	r	0	0	0	0	0	0	0	1
Black Phoebe	r	2	1	3	1	4	5	7	6
Ash-throated Flycatcher	s	2	2	1	2	5	1	1	2
Warbling Vireo	m	0	1	0	0	0	0	0	0
Western Scrub Jay	r	5	4	4	8	2	6	3	7
American Crow	r	5	0	0	0	2	2	8	0
Common Raven	r	10	20	7	26	11	10	4	10
N. Rough-winged Swallow	s	0	0	1	9	0	0	0	0
Cliff Swallow	s	6	3	1	0	16	3	25	3
Oak Titmouse	r	1	1	1	0	0	2	2	2
Bushtit	r	1	0	0	0	0	5	0	8
Bewick's Wren	r	16	17	15	19	15	2	2	11
Western Bluebird	r	0	0	0	0	1	0	0	0
Wrentit	r	0	0	0	0	0	0	0	1
Northern Mockingbird	r	5	2	3	2	4	2	1	0
California Thrasher	r	2	1	0	0	0	0	2	1
European Starling	r	0	0	0	0	1	0	10	0
Loggerhead Shrike	r	0	0	0	0	0	1	0	0
Yellow Warbler	s,m	2	2	0	0	0	0	0	0
Common Yellowthroat	r	2	3	1	2	2	2	4	3
Wilson's Warbler	m	4	3	0	0	0	0	0	0
Western Tanager	m	0	1	0	0	0	0	0	0
Spotted Towhee	r	4	5	4	3	4	5	3	3
California Towhee	r	4	2	13	1	4	2	2	4
Song Sparrow	r	16	14	16	14	11	5	6	2
Black-headed Grosbeak	s	5	5	2	3	3	2	0	1
Blue Grosbeak	s	1	0	0	0	0	0	0	0
Red-winged Blackbird	s	0	5	5	0	0	15	2	8
Brown-headed Cowbird	s	4	0	0	2	1	0	0	1
Bullock's Oriole	s	2	2	0	1	0	0	0	0
House Finch	r	13	12	23	25	26	15	28	65
Lesser Goldfinch	r	3	4	0	0	11	2	2	0

Status: m, migrant; r, resident; s, summer only; w, winter
numbers in parentheses are nestlings.

Table 4. BIRD SURVEYS OF THE SANTA CLARA RIVER BASIN, 2005: Santa Clara River from Boquet Canyon Bridge upstream for 2.5 miles

Endangered Species and Species of Concern in bold

SPECIES	STATUS								
		<u>22-Apr</u>	<u>1-May</u>	<u>20-May</u>	<u>1-Jun</u>	<u>14-Jun</u>	<u>25-Jun</u>	<u>6-Jul</u>	<u>16-Jul</u>
Mallard	r,m	0	2	2(5)	0	0	2	0	1
Turkey Vulture	m	0	0	0	0	0	0	0	0
White-tailed Kite	r	3	3	3	5	3	7	4	3
Cooper's Hawk	r	0	0	0	0	1	0	0	2
Red-shouldered Hawk	r	0	0	0	0	1	0	0	1
Red-tailed Hawk	r	0	1	3	1	4	3	1	5
American Kestrel	r	2	0	1	0	3	0	0	0
California Quail	r	44	72	37	29	49	6	7	22
Killdeer	r	8	9	5	5	6	7	5	4
Rock Dove	r	0	0	0	0	8	0	0	0
Mourning Dove	r	12	36	31	19	32	8	4	130
Greater Roadrunner	r	0	0	0	0	0	1	0	5
Great horned Owl	r	0	0	0	0	0	1	0	0
Allen's Hummingbird	r	0	0	0	0	0	0	0	2
Black-chinned Hummingbird	s	0	1	0	0	1	0		2
Anna's Hummingbird	r	2	14	10	4	8	0	3	7
Costa's Hummingbird	s	1	0	0	0	0	0	0	0
Acorn Woodpecker	r	0	1	0	0	0	0	0	0
Nuttall's Woodpecker	r	2	5	8	1	11	1	4	5
Downy Woodpecker	r	0	0	3	0	4	0	0	0
Northern Flicker	r	1	0	2	0	2	0	1	2
Western Wood Pewee	m	0	0	1	0	0	0	0	0
Willow Flycatcher	s,m	0	0	1	0	0	0	0	0
Pacific Slope Flycatcher	s,m	0	0	2	0	0	0	0	0
Black Phoebe	r	1	0	3	0	2	1	0	3
Say's Phoebe	r	0	1	0	0	0	1	0	0
Ash-throated Flycatcher	s	4	5	5	3	8	4	3	3
Western Kingbird	s	2	3	2	0	3	3	2	9
Loggerhead Shrike	r	0	0	2	0	0	0	0	0
Warbling Vireo	m	0	0	2	0	0	0	0	0
Western Scrub Jay	r	10	13	19	17	18	14	6	13
American Crow	r	1	0	3	2	0	0	10	0
Common Raven	r	7	8	8	3	6	7	2	10
N. Rough-winged Swallow	s	1	20	3	3	4	0	0	0
Cliff Swallow	s	0	52	2	0	3	6	20	0
Oak Titmouse	r	0	6	7	2	5	0	0	5
Bushtit	r	0	8	14	0	14	0	0	1
Bewick's Wren	r	8	31	24	12	23	9	6	19
House Wren	r	1	2	3	0	4	0	0	0
Western Bluebird	r	0	4	4	0	2	0	0	1
American Robin	w,r	0	0	1	0	2	0	0	0

**Table 4 (cont.). BIRD SURVEYS OF THE SANTA CLARA RIVER BASIN, 2005: Santa Clara River
from Boquet Canyon Bridge upstream for 2.5 miles**

Endangered Species and Species of Concern in bold

SPECIES	STATUS								
		<u>22-Apr</u>	<u>1-May</u>	<u>20-May</u>	<u>1-Jun</u>	<u>14-Jun</u>	<u>25-Jun</u>	<u>6-Jul</u>	<u>16-Jul</u>
Wrentit	r	3	9	7	2	3	2	2	8
Northern Mockingbird	r	12	14	8	21	10	15	12	26
California Thrasher	r	1	11	6	1	4	1	1	3
American Pipit	w	0	0	0	0	0	0	0	0
European Starling	r	2	12	22	2	5	60	60	5
Phainopepla	r	3	13	8	6	7	5	0	2
Yellow Warbler	s,m	0	3	7	0	0	0	0	0
Yellow-rumped Warbler	w	0	0	0	0	0	0	0	0
Common Yellowthroat	r,m	0	2	3	0	4	0	2	0
Wilson's Warbler	m	0	5	5	0	0	0	0	0
Western Tanager	m	0	0	3	0	0	0	0	0
Spotted Towhee	r	4	24	36	7	17	2	0	22
California Towhee	r	13	49	46	25	54	20	8	24
Rufous-crowned Sparrow	r	0	4	1	0	0	0	0	0
Savannah Sparrow	w	0	0	0	0	0	0	0	0
Song Sparrow	r	1	6	12	2	16	8	2	7
White-crowned Sparrow	w	0	0	0	0	0	0	0	0
Black-headed Grosbeak	s	0	3	3	0	0	0	0	0
Lazuli Bunting	s	0	2	0	0	2	0	0	1
Red-winged Blackbird	s	12	1	0	2	37	90	16	70
Western Meadowlark	r	0	0	0	0	0	0	0	0
Brown-headed Cowbird	s	1	0	1	0	6	0	0	0
Hooded Oriole	s	0	1	2	0	0	0	0	2
Bullock's Oriole	s	0	7	3	0	8	2	0	5
House Finch	r	14	34	44	20	126	15	34	228
Lesser Goldfinch	r	0	5	10	0	3	0	0	0
American Goldfinch	w,m	0	2	0	0	0	0	0	0
House Sparrow	r	0	0	3	0	2	0	0	0

Status: m, migrant; r, resident; s, summer only; w, winter
numbers in parentheses are nestlings

Table 5. BIRDS OF THE SANTA CLARA RIVER BASIN, 2005: Castaic Creek from I-5 to the Santa Clara River

Endangered Species and Species of Concern in bold

SPECIES	STAT.	Dates of Surveys							
		21-Apr	9-May	23-May	2-Jun	11-Jun	22-Jun	2-Jul	12-Jul
Great Blue Heron	m,w	0	0	0	0	0	0	0	1
Snowy Egret	m,w	0	0	0	0	0	1	0	0
Mallard	r	9	2	0	0	0	4	1	6
White-tailed Kite	r	0	1	0	1	3	2	0	0
Cooper's Hawk	r	1	0	0	1	3	1	0	0
Red-shouldered Hawk	r	1	0	0	0	0	0	0	0
Red-tailed Hawk	r	3	1	2	4	3	5	2	3
American Kestrel	r	2	0	0	0	0	1	1	0
California Quail	r	26	27	24	12	41	7	79	28
Killdeer	r	7	1	6	5	4	13	3	4
Spotted Sandpiper	s	2	0	0	0	0	0	1	0
Rock Dove	r	0	0	0	0	0	0	1	0
Mourning Dove	r	7	9	17	10	22	13	9	6
Barn Owl	r	0	0	0	0	0	0	0	1
Great Horned Owl	r	0	0	0	0	0	1	0	0
Black-ch. Hummingbird	s	0	0	1	2	0	0	1	0
Anna's Hummingbird	r	4	2	4	9	1	7	3	4
Costa's Hummingbird	s	0	0	0	1	0	0	0	0
Nuttall's Woodpecker	r	5	7	5	3	12	14	4	10
Downy Woodpecker	r	4	4	4	1	5	2	3	8
Hairy Woodpecker	r	1	2	2	0	0	0	1	2
Northern Flicker	r	0	2	4	0	2	0	2	0
Western Wood Pewee	s	0	2	0	2	0	1	0	0
Willow Flycatcher	s	0	0	1	0	0	0	0	0
Pacific Slope Flycatcher	s	0	0	0	1	0	1	0	0
Black Phoebe	r	1	3	7	4	1	11	2	5
Say's Phoebe	r	0	0	0	0	0	1	0	0
Ash-throated Flycatcher	s	10	9	8	5	16	1	5	1
Western Kingbird	s	1	0	0	0	0	0	1	9
Horned Lark	r	0	0	3	0	0	30	80	30
Western Scrub Jay	r	16	7	17	8	13	17	9	14
American Crow	r	0	0	1	0	2	0	0	4
Common Raven	r	3	2	4	2	6	7	11	5
Tree Swallow	s	0	0	0	0	0	0	2	0
N. Rough-winged Swallow	s	10	6	11	49	111	60	4	6
Cliff Swallow	s	556	446	432	128	400	351	235	530
Barn Swallow	s	2	0	0	0	0	2	3	3
Oak Titmouse	r	8	12	13	3	18	6	7	14
Bushtit	r	14	4	15	8	11	14	41	17
Bewick's Wren	r	58	42	61	23	28	29	28	21
House Wren	r	4	0	7	6	6	4	0	3
Western Bluebird	r	0	4	0	2	4	2	0	0
American Robin	r	0	0	0	1	0	0	0	0

Table 5 (cont.). BIRDS OF THE SANTA CLARA RIVER BASIN, 2005: Castaic Creek from I-5 to the Santa Clara River

Endangered Species and Species of Concern in bold

SPECIES	STAT.	Dates of Surveys							
		21-Apr	9-May	23-May	2-Jun	11-Jun	22-Jun	2-Jul	12-Jul
Wrentit	r	3	5	1	2	4	0	3	2
Northern Mockingbird	r	0	0	0	0	1	0	0	1
California Thrasher	r	2	3	7	2	2	0	8	0
European Starling	r	7	12	3	2	38	2	3	1
Phainopepla	r	0	1	0	0	0	0	0	0
Yellow Warbler	s,m	3	11	2	1	5	1	0	0
Yellow-rumped Warbler	w,m	3	1	0	0	0	0	0	0
Common Yellowthroat	r	0	2	1	0	9	2	0	2
Wilson's Warbler	m	2	8	1	0	0	0	0	0
Yellow-breasted Chat	s	0	0	0	0	1	0	0	0
Spotted Towhee	r	15	24	12	12	27	12	13	9
California Towhee	r	59	37	20	20	28	13	39	27
Savannah Sparrow	w,m	0	0	0	2	0	0	0	0
Song Sparrow	r	10	21	18	7	17	10	6	19
Black-headed Grosbeak	s	11	8	8	4	10	5	13	4
Lazuli Bunting	s	0	0	0	0	0	0	0	2
Red-winged Blackbird	s	1	0	3	0	10	125	12	7
Brown-headed Cowbird	s	1	0	6	0	2	20	3	1
Bullock's Oriole	s	0	1	4	0	2	0	4	0
House Finch	r	8	22	14	8	28	31	43	31
Lesser Goldfinch	r	2	0	0	1	2	0	0	0
House Sparrow	r	3	4	1	1	7	16	0	11

Status: m, migrant; r, resident; s, summer only; w, winter
numbers in parentheses are nestlings.

Table 6. BIRDS OF THE SANTA CLARA RIVER BASIN, 2005: San Franciscquito Creek from Santa Clara River to Copper Hill Drive.

Endangered Species and Species of Concern in bold

<u>SPECIES</u>	<u>STAT.</u>	<u>Dates of Surveys</u>					
		<u>27-May</u>	<u>6-Jun</u>	<u>16-Jun</u>	<u>24-Jun</u>	<u>5-Jul</u>	<u>14-Jul</u>
Mallard	r	2	2	4	2	0	0
White-tailed Kite	r	0	0	0	1	2	0
Cooper's Hawk	r	0	0	0	1	1	0
Red-shouldered Hawk	r	1	0	0	0	0	0
Red-tailed Hawk	r	1	3	1	1	1	0
California Quail	r	15	9	10	16	11	5
Killdeer	r	6	6	4	4	3	3
Mourning Dove	r	15	23	11	14	5	14
Greater Roadrunner	r	0	0	0	0	0	1
Barn Owl	r	1	3	2	3	1	3
Anna's Hummingbird	r	2	4	2	1	5	5
Nuttall's Woodpecker	r	1	3	7	5	2	3
Black Phoebe	r	1	3	4	7	7	10
Say's Phoebe	r	1	0	0	1	3	2
Ash-throated Flycatcher	s	4	3	8	5	3	6
Western Kingbird	s	2	0	0	0	2	1
Western Scrub Jay	r	2	7	1	8	3	6
American Crow	r	3	3	4	1	0	0
Common Raven	r	17	9	10	21	34	17
N. Rough-winged Swallow	s	11	0	3	0	0	1
Cliff Swallow	s	31	11	8	15	10	30
Barn Swallow	s	0	0	0	0	2	3
Oak Titmouse	r	2	4	2	1	6	0
Bushy-tit	r	6	4	0	0	10	0
Bewick's Wren	r	24	16	14	20	10	16
House Wren	r	5	5	0	0	0	0
Western Bluebird	r	0	5	2	0	7	3
Northern Mockingbird	r	2	5	9	6	6	5
California Thrasher	r	1	1	1	0	0	0
European Starling	r	11	15	2	1	3	7
Loggerhead Shrike	r	0	0	0	0	0	1
Phainopepla	r	9	5	0	2	1	0
Common Yellowthroat	r	0	0	0	2	2	1
Spotted Towhee	r	8	7	3	12	7	6
California Towhee	r	4	5	5	9	6	2
Lark Sparrow	r	0	0	0	0	0	4
Song Sparrow	r	6	8	4	4	3	0
Black-headed Grosbeak	s	2	4	5	1	1	2
Red-winged Blackbird	s	89	104	1	2	5	42
Brewer's Blackbird	r	3	0	0	0	0	0
Bullock's Oriole	s	11	2	0	0	3	0
House Finch	r	68	50	50	66	79	40
Lesser Goldfinch	r	0	5	0	0	4	0
House Sparrow	r	0	0	0	0	5	0

Status: m, migrant; r, resident; s, summer only; w, winter
numbers in parentheses are nestlings.

Table 7. BIRDS OF THE SANTA CLARA RIVER BASIN, 2005: South Fork from Rte 126 downstream to Santa Clara River.

Endangered Species and Species of Concern in bold

SPECIES	STAT.	Dates of Surveys					
		27-May	6-Jun	16-Jun	24-Jun	5-Jul	14-Jul
Mallard	r	0	7	0	0	0	0
Red-shouldered Hawk	r	0	0	0	1	1	1
Red-tailed Hawk	r	5	2		2	1	1
California Quail	r	11	6	10	5	11	9
Rock Dove	r	3	0	0	0	0	0
Mourning Dove	r	13	20	11	6	14	7
Greater Roadrunner	r	0	0	0	1	1	0
Black-ch. Hummingbird	s	0	2	1	1	1	0
Anna's Hummingbird	r	3	5	5	1	3	4
Nuttall's Woodpecker	r	2	2	1	2	3	0
Downy Woodpecker	r	0	0	0	0	2	0
Pacific Slope Flycatcher	s	0	0	1	0	0	0
Black Phoebe	r	1	0	2	0	0	1
Say's Phoebe	r	0	0	0	0	0	2
Ash-throated Flycatcher	s	0	0	3	1	1	0
Western Kingbird	s	0	3	3	2	0	1
Warbling Vireo	m	1	0	0	0	0	0
Western Scrub Jay	r	2	8	1	3	4	5
American Crow	r	2	1	0	2	2	0
Common Raven	r	12	26	24	19	7	5
N. Rough-winged Swallow	s	2	22	3	9	11	0
Cliff Swallow	s	4	0	4	4	12	5
Barn Swallow	s	2	0	6	7	7	0
Oak Titmouse	r	0	0	2	0	0	0
Bushtit	r	9	1	6	2	2	0
Bewick's Wren	r	6	9	28	8	6	7
Western Bluebird	r	0	0	0	0	3	0
Wrentit	r	0	2	0	0	0	0
Northern Mockingbird	r	10	17	3	5	5	3
California Thrasher	r	0	0	2	1	2	1
European Starling	r	8	12	11	3	5	2
Common Yellowthroat	r	0	1	0	0	0	0
Spotted Towhee	r	2	16	5	4	6	2
California Towhee	r	10	11	6	4	5	7
Song Sparrow	r	1	0	0	4	1	0
Black-headed Grosbeak	s	1	0	0	1	2	0
Red-winged Blackbird	r	0	0	0	0	6	0
Brewer's Blackbird	r	0	2	0	0	1	0
Great-tailed Grackle	r	0	0	0	0	6	0
Brown-headed Cowbird	s	7	2	1	0	0	0
Hooded Oriole	s	0	1	2	0	0	0
Bullock's Oriole	s	4	9	6	0	0	0
House Finch	r	30	81	30	43	27	26
Lesser Goldfinch	r	0	11	4	6	2	0
House Sparrow	r	14	11	6	14	4	30

Status: m, migrant; r, resident; s, summer only; w, winter
numbers in parentheses are nestlings.

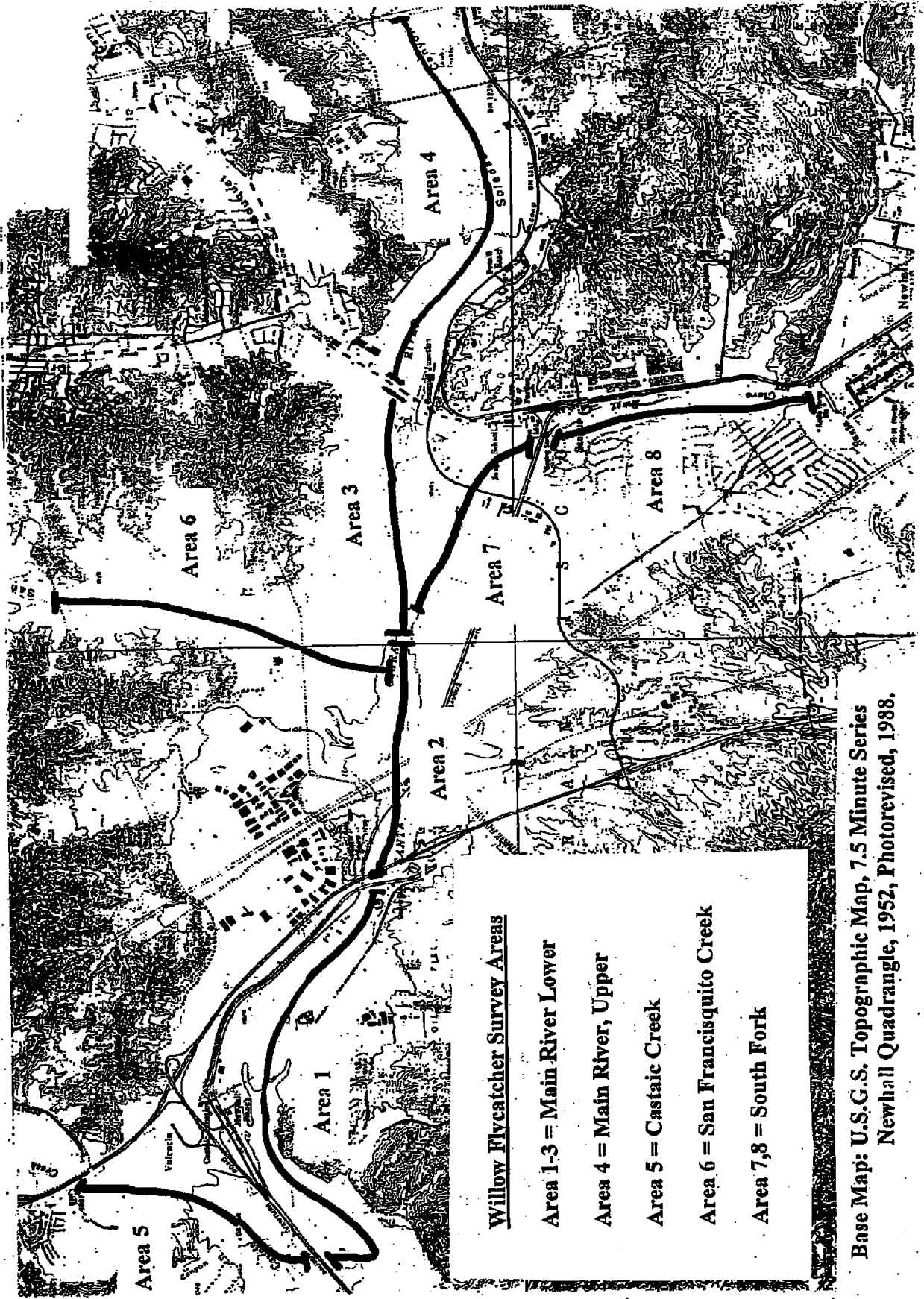
Table 8. BIRDS OF THE SANTA CLARA RIVER BASIN, 2005: South Fork of the Santa Clara River from Route 126 upstream to Coyote Creek.

Endangered Species and Species of Concern in bold

<u>SPECIES</u>	<u>STAT.</u>	<u>Dates of Surveys</u>					
		<u>27-May</u>	<u>6-Jun</u>	<u>16-Jun</u>	<u>24-Jun</u>	<u>5-Jul</u>	<u>14-Jul</u>
Mallard	r	1(8)	0	0	0	0	0
Cooper's Hawk	r	1	1	2		0	3
Red-shouldered Hawk	r	2	0	0	0	0	0
Red-tailed Hawk	r	1	0	0	2	0	0
American Kestrel	r	0	0	0	0	1	0
California Quail	r	20	4	15	5	6	7
Killdeer	r	2	3	0	3	3	1
Rock Dove	r	2	4	0	17	0	0
Mourning Dove	r	4	3	14	9	5	9
Black-ch. Hummingbird	s	0	0	0	0	0	2
Anna's Hummingbird	r	16	7	5	4	5	9
Nuttall's Woodpecker	r	0	3	3	2	7	7
Downy Woodpecker	r	0	1	2	0	0	0
Black Phoebe	r	0	2	0	1	1	0
Say's Phoebe	r	0	1	0	0	0	0
Ash-throated Flycatcher	s	0	0	2	0	0	1
Cassin's Kingbird	s	0	2	0	2	0	0
Western Kingbird	s	0	3	0	7	0	1
Western Scrub Jay	r	9	6	11	15	14	14
American Crow	r	2	7	0	3	2	2
Common Raven	r	4	17	14	21	7	5
N. Rough-winged Swallow	s	2	2	4	2	2	0
Cliff Swallow	s	1	1	0	0	2	0
Oak Titmouse	r	0	0	0	2	0	4
Bushtit	r	5	2	11	16	15	18
Bewick's Wren	r	16	9	32	19	9	11
Wrentit	r	4	1	3	6	0	4
Northern Mockingbird	r	5	5	6	9	7	4
California Thrasher	r	4	3	1	1	5	6
European Starling	r	0	0	3	0	0	3
Phainopepla	r	0	2	0	0	0	0
Orange-cr. Warbler	r	0	0	0	0	2	0
Common Yellowthroat	r	0	0	4	0	1	0
Spotted Towhee	r	17	1	9	8	7	9
California Towhee	r	24	11	11	18	8	25
Song Sparrow	r	33	7	11	3	9	3
Black-headed Grosbeak	s	3	0	2	5	2	3
Red-winged Blackbird	s	2	0	0	0	0	0
Brown-headed Cowbird	s	2	2	0	2	0	7
Bullock's Oriole	s	0	2	0	1	0	1
House Finch	r	22	50	50	21	24	24
Lesser Goldfinch	r	0	2	0	0	3	0
House Sparrow	r	31	10	47	49	11	4

Status: m, migrant; r, resident; s, summer only; w, winter
numbers in parentheses are nestlings.

Figure 4. Survey Areas for Willow Flycatcher along the Santa Clara River and Tributaries



Willow Flycatcher Survey and Detection Form (rev. 4/98)

Site Name South Fork Los Angeles

Was site surveyed in previous year? Yes

Drainage Santa Clara River

If yes, what site name was used? South Fork

County Los Angeles

State CA

USGS Quad Name Newhall

Is copy of USGS map marked with survey area and WIFL sightings attached (as required)? ☒ Yes ☐ No

Site Coordinates: Start: N 34 23.735 W 118 32.354 UTM

Stop: N 34 25.507 W 118 33.710 UTM Zone

Elevation 1120-1200 ft. feet / meters (circle one)

**** Fill in additional site information on back of this page ****

Survey # Observer(s)	Date (m/d/y) Survey time	Number of WIFLs Found	Estimated Number of Pairs	Estimated Number of Territories	Nest(s) Found? Y or N	Cowbirds Detected? Y or N	Presence of Livestock, Recent sign Y or N	Comments about this survey (e.g., evidence of pairs or breeding, number of nests, nest contents or number of fledges seen; potential threats)
J. Sugden	Date 5/27 start 6:30 stop 8:30 total hrs 2.0	0	0	0	n	Y	n	
j. Sugden	Date 6/6 Start 6:30 Stop 8:30 total hrs 2	0	0	0	n	Y	N	Non-singing
J. Sugden	Date 6/16 Start 6:30 Stop 8:30 total hrs 2.0	0	0	0	n	Y	N	
J. Sugden	Date 7/5 start 6:30 stop 8:30 total hrs 2.0	0	0	0	n	Y	N	
J. Sugden	Date 7/14 start 6:30 stop 8:30 total hrs 2.0	0	0	0	n	Y	N	
Overall Site Summary (Total only resident WIFLs)		Adults 0	Pairs 0	Territories 0	Nests 0	Were any WIFLs color-banded? <u>No</u> If yes, report color combination(s) in the comments section on back of form		
Total survey hrs <u>10.0</u>								

Name of Reporting Individual Dan Guthrie Date Report Completed 7/20/05

Submit the original of this form. Retain a copy for your records.

Fill in the following information completely. Submit original form. Retain copy for your records.

Name of Reporting Individual Dan Guthrie Phone # 909 607 2836

Affiliation Claremont Colleges Email dguthrie@jsd.claremont.edu

Site Name South Fork, Santa Clara River

Did you verify that this site name is consistent with that used in previous years? Yes No ? (circle one)

This is a section of site previously lumped as upper Santa Clara River

Management Authority for Survey Area (circle one):

Federal Municipal/County State Tribal Private

Name of Management Entity or Owner (e.g., Tonto National Forest) Newhall Land Co.

Length of area surveyed: 2 miles (specify units, e.g., miles = mi, kilometers = km, meters = m)

Did you survey the same general area during each visit to this site this year? Yes / If no, summarize in comments below.

If site was surveyed last year, did you survey the same general area this year? Yes / If no, summarize in comments below.

Vegetation Characteristics: Overall, are the species in tree/shrub layer at this site comprised predominantly of (check one):

Native broadleaf plants

☒ Mixed native and exotic plants (mostly native)

(entirely or almost entirely, includes high-elevation willow)

☐ Mixed native and exotic plants (mostly exotic)

☐ Exotic/introduced plants (entirely or almost entirely)

Identify the 2-3 predominant tree/shrub species: Cottonwood, willow, tamarisk

Average height of canopy: 30t (specify units)

Was surface water or saturated soil present at or adjacent to site? No water present only in three spots due to suburban runoff.

Distance from the site to surface water or saturated soil: _____ (specify units)

Did hydrological conditions change significantly among visits (did the site flood or dry out)? No (circle one)

If yes, describe in comments section below. no water present except for 50 yd section trickle in center of section.

Remember to attach a xerox copy of a USGS quad/topographical map (REQUIRED) of the survey area, noting the survey site and location of WIFL detections. You may also include a sketch or aerial photograph showing details of site location, patch shape, survey route in relation to patch, and location of any willow flycatchers or willow flycatcher nests detected. Such sketches or photographs are welcomed, but DO NOT substitute for the required USGS quad map.

Comments (attach additional sheets if necessary): _____

No flowing water along this section. There were small puddles due to runoff from neighboring suburbs. These support stands of cottonwood where flycatcher was seen. Non singing and time of observation suggests a northern subspecies.

Willow Flycatcher Survey and Detection Form (rev. 4/98)

Site Name Santa Clara River: Castaic Creek to Boquet Canyon Rd. 104151210

Was site surveyed in previous year? Yes Drainage Santa Clara River

If yes, what site name was used? Upper Santa Clara River: Sections 1-3

County Los Angeles State CA USGS Quad Name Newhall

Is copy of USGS map marked with survey area and WIFL sightings attached (as required)? ☒ Yes ☐ No

Site Coordinates: Start: N 34 25.415 W 118 32.399 UTM

Stop: N 34 25.172 W 118 38.070 UTM Zone

Elevation 980 - 1125 ft. feet / meters (circle one)

**** Fill in additional site information on back of this page ****

Survey # Observer(s)	Date (m/d/y) Survey time	Number of WIFLs Found	Estimated Number of Pairs	Estimated Number of Territories	Nest(s) Found? Y or N	Cowbirds Detected? Y or N	Presence of Livestock, Recent sign Y or N	Comments about this survey (e.g., evidence of pairs or breeding, number of nests, nest contents or number of fledges seen; potential threats)
D. Guthrie J. Sugden	Date 5/25 start 6:30 stop 9:00 total hrs 2.5	0	0	0	n	Y	n	
D. Guthrie J. Sugden	Date 6/15 Start 6:30 Stop 9:00 total hrs 2.5	0	0	0	n	Y	N	
D. Guthrie J. Sugden	Date 6/27 Start 6:30 Stop 9:00 total hrs 2.5	0	0	0	n	Y	N	
D. Guthrie J. Sugden	Date 7/5 start 6:30 stop 9:00 total hrs 2.5	0	0	0	n	Y	N	
D. Guthrie J. Sugden	Date 7/17 start 6:30 stop 9:00 total hrs 2.5	0	0	0	n	Y	N	
Overall Site Summary (Total only resident WIFLs) Total survey hrs 25 12.5 guthrie, 12.5 sugden		Adults 0	Pairs 0	Territories 0	Nests 0	Were any WIFLs color-banded? No If yes, report color combination(s) in the comments section on back of form		

Name of Reporting Individual Dan Guthrie Date Report Completed 7/20/05

Submit the original of this form. Retain a copy for your records.

Fill in the following information completely. Submit original form. Retain copy for your records.

Name of Reporting Individual Dan Guthrie Phone # 909 607 2836

Affiliation Claremont Colleges Email dguthrie@jsd.claremont.edu

Site Name Santa Clara River: Castaic Creek to Boquet River Bridge

Did you verify that this site name is consistent with that used in previous years? Yes No ? (circle one)

This is a section of site previously lumped as upper Santa Clara River, sections 1-3

Management Authority for Survey Area (circle one):

Federal Municipal/County State Tribal Private

Name of Management Entity or Owner (e.g., Tonto National Forest) Newhall Land Co.

Length of area surveyed: 5.9 miles (specify units, e.g., miles = mi, kilometers = km, meters = m)

Did you survey the same general area during each visit to this site this year? Yes / If no, summarize in comments below.

If site was surveyed last year, did you survey the same general area this year? Yes / If no, summarize in comments below.

Vegetation Characteristics: Overall, are the species in tree/shrub layer at this site comprised predominantly of (check one):

Native broadleaf plants

☒ Mixed native and exotic plants (mostly native)

(entirely or almost entirely, includes high-elevation willow)

☐ Mixed native and exotic plants (mostly exotic)

☐ Exotic/introduced plants (entirely or almost entirely)

Identify the 2-3 predominant tree/shrub species: Cottonwood, willow, tamarisk

Average height of canopy: 40 ft. (specify units)

Was surface water or saturated soil present at or adjacent to site? yes.

Distance from the site to surface water or saturated soil: _____ (specify units)

Did hydrological conditions change significantly among visits (did the site flood or dry out)? No (circle one)

If yes, describe in comments section below. no water present except for 50 yd section trickle in center of section.

Remember to attach a xerox copy of a USGS quad/topographical map (REQUIRED) of the survey area, noting the survey site and location of WIFL detections. You may also include a sketch or aerial photograph showing details of site location, patch shape, survey route in relation to patch, and location of any willow flycatchers or willow flycatcher nests detected. Such sketches or photographs are welcomed, but DO NOT substitute for the required USGS quad map.

Comments (attach additional sheets if necessary): _____

Santa Clara River flows discontinuously along this section of the river. Water is provided by two sewage treatment plants.

Willow Flycatcher Survey and Detection Form (rev. 4/98)

Site Name Santa Clara River above Bouquet Canyon rd. 10419351

Was site surveyed in previous year? Yes ☐ No ☐ Drainage Santa Clara River

If yes, what site name was used? same as above

County Los Angeles State CA USGS Quad Name Newhall

Is copy of USGS map marked with survey area and WIFL sightings attached (as required)? X ☐ Yes ☐ No

Site Coordinates: Start: N 34 25.415 W 118 32.399 UTM
Stop: N 34 25.515 W 118 30.125 UTM Zone

Elevation 1125-1320 ft. feet / meters (circle one)

**** Fill in additional site information on back of this page ****

Survey # Observer(s)	Date (m/d/y) Survey time	Number of WIFLs Found	Estimated Number of Pairs	Estimated Number of Territories	Nest(s) Found? Y or N	Cowbirds Detected? Y or N	Presence of Livestock, Recent sign Y or N	Comments about this survey (e.g., evidence of pairs or breeding, number of nests, nest contents or number of fledges seen; potential threats)
J. Sugden _____ _____	Date 5/20 start 6 stop 7:30 total hrs <u>1.5</u>	1	0	0	N	n	n	migrant
d. Guthrie _____ _____	Date 6/14 Start 6:00 Stop 7:30 total hrs <u>1.5</u>	0	0	0	n	n	N	
D. Guthrie _____ _____	Date 6/25 Start 6:00 Stop 7:30 total hrs <u>1.5</u>	0	0	0	n	n	N	
D. Guthrie _____ _____	Date 7/6 start 6:00 stop 7:30 total hrs <u>1.50</u>	0	0	0	n	n	N	?
J. sugden _____ _____	Date 7/16 start 6:00 stop 7:30 total hrs <u>1.5</u>	0	0	0	n	n	N	
Overall Site Summary (Total only resident WIFLs)		Adults <u>1</u>	Pairs <u>0</u>	Territories <u>0</u>	Nests <u>0</u>	Were any WIFLs color-banded? No If yes, report color combination(s) in the comments section on back of form		
Total survey hrs <u>7.5</u>								

Name of Reporting Individual Dan Guthrie Date Report Completed 7/20/05

Submit the original of this form. Retain a copy for your records.

Fill in the following information completely. Submit original form. Retain copy for your records.

Name of Reporting Individual Dan Guthrie Phone # 909 607 2836

Affiliation Claremont Colleges Email dguthrie@jsd.claremont.edu

Site Name Santa Clara River above boquet Canyon Rd.

Did you verify that this site name is consistent with that used in previous years?

This is a section of site previously lumped as upper Santa Clara River, section 4.

Management Authority for Survey Area (circle one):

Federal Municipal/County State Tribal Private

Name of Management Entity or Owner (e.g., Tonto National Forest) Newhall Land Co.

Length of area surveyed: 2 miles (specify units, e.g., miles = mi, kilometers = km, meters = m)

Did you survey the same general area during each visit to this site this year? Yes / If no, summarize in comments below.

If site was surveyed last year, did you survey the same general area this year? Yes / If no, summarize in comments below.

Vegetation Characteristics: Overall, are the species in tree/shrub layer at this site comprised predominantly of (check one):

Native broadleaf plants

☒ Mixed native and exotic plants (mostly native)
(entirely or almost entirely, includes high-elevation willow)

☐ Mixed native and exotic plants (mostly exotic) ☐ Exotic/introduced plants (entirely or almost entirely)

Identify the 2-3 predominant tree/shrub species: Cottonwood, Baccharis, tamarisk

Average height of canopy: 30 ft. if present. (specify units)

Was surface water or saturated soil present at or adjacent to site? No .

Distance from the site to surface water or saturated soil: water starts at downstream end of section. (specify units)

Did hydrological conditions change significantly among visits (did the site flood or dry out)? No (circle one)

If yes, describe in comments section below. no water present except for 50 yd section trickle in center of section.

Remember to attach a xerox copy of a USGS quad/topographical map (REQUIRED) of the survey area, noting the survey site and location of WIFL detections. You may also include a sketch or aerial photograph showing details of site location, patch shape, survey route in relation to patch, and location of any willow flycatchers or willow flycatcher nests detected. Such sketches or photographs are welcomed, but DO NOT substitute for the required USGS quad map.

Comments (attach additional sheets if necessary):

Willow Flycatcher Survey and Detection Form (rev. 4/98)

Site Name San Francisquito Creek Los Angeles

Was site surveyed in previous year? Yes No

Drainage Santa Clara River

If yes, what site name was used? same as above

County Los Angeles State CA USGS Quad Name Newhall

Is copy of USGS map marked with survey area and WIFL sightings attached (as required)? ☒ Yes ☐ No

Site Coordinates: Start: N 34 25.631 W 118 33.899 UTM
Stop: N 34 27.752 W 118 33.047 UTM Zone

Elevation 1125-1300 ft. feet / meters (circle one)

**** Fill in additional site information on back of this page ****

Survey # Observer(s)	Date (m/d/y) Survey time	Number of WIFLs Found	Estimated Number of Pairs	Estimated Number of Territories	Nest(s) Found? Y or N	Cowbirds Detected? Y or N	Presence of Livestock, Recent sign Y or N	Comments about this survey (e.g., evidence of pairs or breeding, number of nests, nest contents or number of fledges seen; potential threats)
D. Guthrie _____ _____ _____	Date 5/27 start 6:30 stop 8:30 total hrs <u>2.0</u>	0	0	0	n	n	n	
D. Guthrie _____ _____ _____	Date 6/16 Start 6:30 Stop 8:30 total hrs <u>2</u>	0	0	0	n	n	N	
D. Guthrie _____ _____ _____	Date 6/24 Start 6:30 Stop 8:30 total hrs <u>2.0</u>	0	0	0	n	n	N	
D. Guthrie _____ _____ _____	Date 7/5 start 6:30 stop 8:30 total hrs <u>2.0</u>	0	0	0	n	n	N	
D. Guthrie _____ _____ _____	Date 7/14 start 6:30 stop 8:30 total hrs <u>2.0</u>	0	0	0	n	n	N	
Overall Site Summary (Total only resident WIFLs)		Adults 0	Pairs 0	Territories 0	Nests 0	Were any WIFLs color-banded? No If yes, report color combination(s) in the comments section on back of form		
Total survey hrs <u>10.0</u>								

Name of Reporting Individual Dan Guthrie Date Report Completed 7/20/05

Submit the original of this form. Retain a copy for your records.

Fill in the following information completely. Submit original form. Retain copy for your records.

Name of Reporting Individual Dan Guthrie Phone # 909 607 2836

Affiliation Claremont Colleges Email dguthrie@jsd.claremont.edu

Site Name San Francisquito Creek

Did you verify that this site name is consistent with that used in previous years? Yes No ? (circle one)

This is a section of site previously lumped as upper Santa Clara River

Management Authority for Survey Area (circle one):

Federal Municipal/County State Tribal Private

Name of Management Entity or Owner (e.g., Tonto National Forest) Newhall Land Co.

Length of area surveyed: 2 miles (specify units, e.g., miles = mi, kilometers = km, meters = m)

Did you survey the same general area during each visit to this site this year? Yes / If no, summarize in comments below.

If site was surveyed last year, did you survey the same general area this year? Yes / If no, summarize in comments below.

Vegetation Characteristics: Overall, are the species in tree/shrub layer at this site comprised predominantly of (check one):

Native broadleaf plants

☒ ☐ Mixed native and exotic plants (mostly native)
(entirely or almost entirely, includes high-elevation willow)

☐ Mixed native and exotic plants (mostly exotic) ☐ Exotic/introduced plants (entirely or almost entirely)

Identify the 2-3 predominant tree/shrub species: Cottonwood, willow, tamarisk

Average height of canopy: 40 ft. (specify units)

Was surface water or saturated soil present at or adjacent to site? No water present only for 50 yds in middle of section.

Distance from the site to surface water or saturated soil: _____ (specify units)

Did hydrological conditions change significantly among visits (did the site flood or dry out)? No (circle one)

If yes, describe in comments section below. no water present except for 50 yd section trickle in center of section.

Remember to attach a xerox copy of a USGS quad/topographical map (REQUIRED) of the survey area, noting the survey site and location of WIFL detections. You may also include a sketch or aerial photograph showing details of site location, patch shape, survey route in relation to patch, and location of any willow flycatchers or willow flycatcher nests detected. Such sketches or photographs are welcomed, but DO NOT substitute for the required USGS quad map.

Comments (attach additional sheets if necessary): _____

Willow Flycatcher Survey and Detection Form (rev. 4/98)

Site Name Castaic Creek Not a Site

Was site surveyed in previous year? Yes No

Drainage Santa Clara River

If yes, what site name was used? Upper Santa Clara River, section 5

County Los Angeles

State CA

USGS Quad Name Newhall

Is copy of USGS map marked with survey area and WIFL sightings attached (as required)? ☒ Yes ☐ No

Site Coordinates: Start: N 34 25/306 W 118 36.755 UTM

Stop: N 34 26 W 118 37 UTM Zone

Elevation 950-1027 ft. feet / meters (circle one)

**** Fill in additional site information on back of this page ****

Survey # Observer(s)	Date (m/d/y) Survey time	Number of WIFLs Found	Estimated Number of Pairs	Estimated Number of Territories	Nest(s) Found? Y or N	Cowbirds Detected? Y or N	Presence of Livestock, Recent sign Y or N	Comments about this survey (e.g., evidence of pairs or breeding, number of nests, nest contents or number of fledges seen; potential threats)
J. Sugden _____ _____	Date 5/23 start 6:30 stop 8:30 total hrs <u>2.0</u>	1	0	0	n	Y	n	migrants
J. Sugden _____ _____	Date 6/11 Start 6:30 Stop 8:30 total hrs <u>2.0</u>	2	0	0	n	Y	N	
J. Sugden _____ _____	Date 6/22 Start 6:30 Stop 8:30 total hrs <u>2.0</u>	0	0	0	n	Y	N	
J. Sugden _____ _____	Date 7/2 start 6:30 stop 8:30 total hrs <u>2.0</u>	0	0	0	n	Y	N	
J. Sugden _____ _____	Date 7/12 start 6:30 stop 8:30 total hrs <u>2.0</u>	0	0	0	n	Y	N	
Overall Site Summary (Total only resident WIFLs)		Adults 0	Pairs 0	Territories 0	Nests 0	Were any WIFLs color-banded? No If yes, report color combination(s) in the comments section on back of form		
Total survey hrs <u>10.0</u>								

Name of Reporting Individual Dan Guthrie Date Report Completed 7/20/05

Submit the original of this form. Retain a copy for your records.

Fill in the following information completely. Submit original form. Retain copy for your records.

Name of Reporting Individual Dan Guthrie Phone # 909 607 2836

Affiliation Claremont Colleges Email dguthrie@jsd.claremont.edu

Site Name Castaic Creek

Did you verify that this site name is consistent with that used in previous years? Yes No ? (circle one)

This is a section of site previously lumped as upper Santa Clara River. section 5.

Management Authority for Survey Area (circle one):

Federal Municipal/County State Tribal Private

Name of Management Entity or Owner (e.g., Tonto National Forest) Newhall Land Co.

Length of area surveyed: 2 miles (specify units, e.g., miles = mi, kilometers = km, meters = m)

Did you survey the same general area during each visit to this site this year? Yes / If no, summarize in comments below.

If site was surveyed last year, did you survey the same general area this year? Yes / If no, summarize in comments below.

Vegetation Characteristics: Overall, are the species in tree/shrub layer at this site comprised predominantly of (check one):

Native broadleaf plants

☒ ☐ Mixed native and exotic plants (mostly native)
(entirely or almost entirely, includes high-elevation willow)

☐ Mixed native and exotic plants (mostly exotic) ☐ Exotic/introduced plants (entirely or almost entirely)

Identify the 2-3 predominant tree/shrub species: Cottonwood, willow, tamarisk

Average height of canopy: 40 ft. (specify units)

Was surface water or saturated soil present at or adjacent to site? No see comment

Distance from the site to surface water or saturated soil: see comment

Did hydrological conditions change significantly among visits (did the site flood or dry out)? No (circle one)

If yes, describe in comments section below. no water present except for 50 yd section trickle in center of section.

Remember to attach a xerox copy of a USGS quad/topographical map (REQUIRED) of the survey area, noting the survey site and location of WIFL detections. You may also include a sketch or aerial photograph showing details of site location, patch shape, survey route in relation to patch, and location of any willow flycatchers or willow flycatcher nests detected. Such sketches or photographs are welcomed, but DO NOT substitute for the required USGS quad map.

Comments (attach additional sheets if necessary):

The timing of this sighting suggests that the bird was a migrant passing through the area. Its identity to subspecies is not known. It may have belonged to a subspecies other than southwestern.