

---

**Guthrie, D.A., "Bird Surveys along the Santa Clara River, 2006; Mouth of  
Castaic Creek Downstream to just below Las Brisas Crossing"  
(October 11, 2006; 2006A)**

2006  
Bird

**BIRD SURVEYS ALONG THE SANTA CLARA RIVER, 2006**  
**MOUTH OF CASTIAC CREEK DOWNSTREAM TO**  
**JUST BELOW LAS BRISAS CROSSING**

Prepared for:

Mat Carpenter  
Newhall Land and Farming  
23823 Valencia Blvd.  
Valencia, Ca. 91355

Prepared by:

Daniel A. Guthrie  
W.M. Keck Science Center  
Claremont Colleges  
925 N. Mills Ave.  
Claremont, Ca. 91711  
909 607-2836  
dguthrie@jsd.claremont.edu

FINAL REPORT

Oct 11, 2006

**Bird Surveys along the Santa Clara River, 2006**  
**Mouth of Castaic Creek Downstream to just below Las Brisas Crossing**

Daniel A. Guthrie  
W.M. Keck Science Center, Claremont Colleges  
925 N. Mills Ave.  
Claremont, Ca. 91711  
909 607-2836

**Nature and Scope of Surveys**

During the spring and early summer of 2006 surveys were conducted along the section of the Santa Clara River between its confluence with Castaic Creek and a point 1/4 mile below the Las Brisas bridge over the Santa Clara River. The total length of the section surveyed was 7.5 miles.

All surveys were conducted in accordance to the U.S. Fish and Wildlife Service Protocol for least Bell's vireo. In addition five of these surveys were conducted within the time frames recommended by the U.S. Fish and Wildlife Service Protocol for southwestern willow flycatcher. In order to follow least Bell's vireo protocol on kilometers covered per day, surveys were separated by County (Tables 1-2), and each portion (one in Los Angeles and one in Ventura County) was divided into two sections, each surveyed separately. However, observations from these two surveys are combined in data presentation (Tables 1-2).

Each survey was conducted on foot by observers well acquainted with both visual and auditory and behavioral characteristics of southern California birds. Surveys occurred approximately every other week between mid April and mid July (there was some variation in timing to avoid periods of poor weather) and occurred between 6:30 and 10:30 a.m. All birds sighted were counted, but special emphasis was placed on finding focus species, Species of Special Concern, and brown-headed cowbirds. If focus species (yellow-billed cuckoo, least Bell's vireo, southwestern willow flycatcher), were not visually observed, tapes of their calls were played in an attempt to elicit a response. Personnel for all surveys were Daniel A. Guthrie and Judith A. Sugden, both working under Federal Fish and Wildlife Service Permit number TE810394-2, issued under section 10(a)(1)(A) of the Endangered Species Act and permitted for both least Bell's vireo and southwestern willow flycatcher. and under an MOU from State of California Department of Fish and Game, dated April 23, 2003, also for these species.

## **Habitat Condition and Bird Observations**

Although some heavy rain and flooding occurring during 2006 there was little obvious destruction of riparian woodland along the river. There were, however, extensive sandy areas remaining from the severe flooding of 2005. Water flow throughout the period was heavier than usual due to increased release from Castiac Lake and this and late spring rains resulted in very good growth of annual vegetation.

Observations of all birds are shown in Tables 1-2. The numbers shown are of birds seen and heard, with heard individuals forming the majority of the observations. Numbers vary between censuses for several reasons. Bird activity varies with season. Different species breed at different times of the year. In general, species are most easily observed when they are actively defending territories by song during the establishment of breeding pairs. Once pairs are established and nesting begins song often decreases and the numbers of birds observed, therefore, also decreases. After young leave the nest, the number of birds observed increase. Thus, for most resident species, numbers of adult birds are most accurately censused in April and May, when territorial activity is at a maximum. A few species such as Anna's hummingbird that nest early in the season may be underestimated. Numbers of nesting species observed may be higher than normal in May due to migratory birds passing through the area, then decrease slightly in June and early July when birds are less active during nesting, and may increase in late June and July when young birds leave the nest. Increases in some species also occur in July when species resident in nearby habitats visit the riparian zone to feed on elderberry and other wet riparian plants.

## **Comments on Threatened and Endangered Species**

### **Yellow-billed Cuckoo (*Coccyzus americanus*)**

The Yellow-billed Cuckoo is listed as a State Endangered Species. Despite playing taped calls of this species during June and July surveys, when this species might be present, no individuals of this species were observed in 2006.

### **Southwestern Willow Flycatcher (*Empidonax traillii extimus*)**

No willow flycatchers were observed during any of the 2006 surveys. The report forms required by the survey protocol for this species are attached and will be forwarded to the Ventura Office of the U.S. Fish and Wildlife Service.

This subspecies is listed as Federally Endangered under the Federal Endangered Species Act. Willow flycatchers were once widespread in wet riparian woodland in southern California but now fewer than 70 pair remain, with the major concentrations being along the Kern River and the Santa Margarita River in San Diego County. Following the Revised Protocol (Fish And Wildlife Service, July 2000) five surveys (see tables 1-2 for dates) were conducted specifically for southwestern willow flycatcher. All surveys occurred between 6:00 and 10:00 am. and used taped calls to elicit a response if flycatchers were not first observed.

Willow flycatchers are fairly common migrants through southern California and most of the migrants are believed to be of the more northern common subspecies of willow flycatcher, *E. t. brewsteri*, which breeds throughout southern Canada and the northern United States, rather than representatives of the southwestern subspecies *E. t. extimus*. Southwestern willow flycatchers are positively identified primarily by nesting within the geographic area of their range or by measurements of in hand specimens.

### **Least Bell's Vireo (*Vireo bellii pusillus*)**

Surveys of the wet riparian areas along the Santa Clara River followed U.S. Fish and Wildlife Service Guidelines for least Bell's vireo. Eight surveys were conducted between April 10 and July 31 (see tables 1-2 for dates). All surveys occurred between 6:00 and 10:00 am. The least Bell's vireo is a very vocal species and most birds were located without the use of taped calls. However, tapes were used to elicit responses in early spring, before vireo arrival, in late summer, when vireos were less vocal, and in areas of marginal habitat or where vireos were expected from previous sightings but could not be heard. A calling vireo was considered a territorial male. If a second, silent bird was observed in the same area, a pair was considered to be present. However, to avoid disturbance, no efforts were made to find nests, locate with certainty females in territories, or to locate fledged young in established territories. Numbers of vireos shown in Tables 1 and 2 are actual numbers of birds observed. These numbers include all vireos, both singing and silent. In order to avoid disturbing vireos, no special efforts were made to determine nesting success or presence of leg bands once birds were observed. However, at each location where vireos were found, they were observed at least once, and no leg bands were observed.

In the Ventura County section of this survey five territorial male least Bell's vireos were regularly encountered (Figure 1). Vireos have been regular along this section of the river in past years, but numbers are down from 2005, when 8 territorial males were regularly observed.

In the Los Angeles County section of this survey four male territorial least Bell's vireos were regularly observed (Figure 2). This number is down from the 10 vireos observed in 2005.

Preliminary observations across California have noted a decrease in least Bell's vireo numbers in 2006. There was no decrease in suitable habitat along the Santa Clara river; if anything, suitable habitat increased. Observations of single birds on a single survey (Figures 1,2) may indicate difficulty in finding mates for some vireos. The cause of the decline in vireo numbers is not known but may be due to factors on their wintering grounds or during migration.

### **Comments on Sensitive Species**

#### **Great Blue Heron (*Ardea herodias*)**

Great Blue Herons are listed on the California Natural Diversity Data Base as a species that warrants monitoring. Individuals of this species were observed sparingly along the river after the breeding season and along other sections of the river during winter and migration. No nesting was observed.

#### **Great Egret (*Ardea alba*)**

The great egret is listed on the California Natural Diversity Data Base as a species that warrants monitoring. Individuals of this species was observed sparingly along the river and probably represent non-breeding individuals. No evidence of nesting was observed.

#### **White-tailed Kite (*Elanus leucurus*)**

This species is considered a Species of Management Concern by the U.S. Fish and Wildlife Service. Hunting kites were regularly observed along the river. Two pairs of kites nested in 2006, one in Ventura County (Figure 3) and one in Los Angeles County (Figure 4). Young were observed at both nests in May. By late June and July kite numbers on the river decreased due to the absence of juvenile birds.

#### **Cooper's Hawk (*Accipiter cooperii*)**

Cooper's hawk is considered a Species of Special Concern by the State of California. Cooper's hawks were regularly observed along the river in both Los Angeles and Ventura County and presumably nested in the area.

#### **Yellow Warbler (*Dendroica petechia*)**

The yellow warbler is considered a Species of Special Concern by the State of California. Yellow warblers prefer wet riparian habitat but are also found in large cottonwoods in drier riparian areas. High numbers of yellow warblers were observed during migration and a small number of warblers persisted into the nesting season. Most sightings were in the areas where least Bell's vireos were present.

#### **Yellow-breasted Chat (*Icteria virens*)**

The yellow-breasted chat is considered a Species of Special Concern by the State of California. The numbers of chats calling from territories along this section of riparian woodland are about the same number as observed here in previous years. . Most sightings were in the dry forest adjacent to agricultural fields in where least Bell's vireos were also present.

#### **Comments on Brown Headed Cowbird (*Molothrus ater*)**

Cowbirds were regularly observed in all sections of the study area and seemed to be attracted by tapes of least Bell's vireo calls. Numbers seemed lower than in previous years in the Los Angeles County section.

#### **Summary**

No yellow billed cuckoos or willow flycatchers were observed during 2006.

Only 9 pair of least Bell's vireos were regularly observed in 2006. This is a decrease from the 2005 count of 20 pairs. However, 2005 was a banner year, and the number for 2006 is not much smaller than the 2004 census of 11 – 14 pair. The cause of the decrease in 2006 is not known, but appears not to be

due to local conditions of habitat. The decrease may be due to factors during migration or on the wintering grounds of this species.

Among species of concern, the riparian species; yellow warbler and yellow-breasted chat occurred in small numbers in riparian woodlands along the river. There were several observations of two raptors, the white-tailed kite and Cooper's hawk. Both species nest in riparian woodlands. Two wintering and migrant species of concern, great blue heron and great egret, were observed feeding in small numbers on the river, but did not nest in the area.

**Table 1. BIRDS OBSERVATIONS ALONG THE SANTA CLARA RIVER,2006: Santa Clara River  
from the mouth of Castaic Creek downstream to the Los Angeles/Ventura County Line.**

<b>Endangered Species and Species of Concern in Bold</b>									
<b>SPECIES</b>	<b>STAT.</b>	<b>Dates of Surveys</b>							
		<b>4/16,18</b>	<b>5/2,4</b>	<b>5/15,16</b>	<b>5/25,26</b>	<b>6/6,7</b>	<b>6/21,22</b>	<b>6/30,7/1</b>	<b>7/10,11</b>
Great Blue Heron	m,w	0	1	0	0	0	1	0	0
Great Egret	m,w	0	3	2	0	0	1	0	0
Snowy Egret	m,w	3	6	1	0	0	0	0	0
Green Heron	r	2	0	1	0	0	0	0	0
Mallard	r	3	8	8	8	4	2	1	0
<b>White-tailed Kite</b>	<b>r</b>	<b>3</b>	<b>3</b>	<b>1</b>	<b>9</b>	<b>5</b>	<b>2</b>	<b>1</b>	<b>2</b>
<b>Cooper's Hawk</b>	<b>r</b>	<b>0</b>	<b>0</b>	<b>0</b>	<b>2</b>	<b>1</b>	<b>0</b>	<b>0</b>	<b>0</b>
Red-shouldered Hawk	r	0	0	2	1	4	2	3	1
Red-tailed Hawk	r	0	3	2	1	0	3	0	0
Golden Eagle	r?,m	2	0	0	0	0	0	0	0
American Kestrel	r	4	2	2	2	1	4	1	3
California Quail	r	66	33	60	26	18	27	27	29
Killdeer	r	0	17	11	22	8	42	20	9
Spotted Sandpiper	s	0	0	0	0	0	0	1	0
Least Sandpiper	m	0	2	0	0	0	0	0	0
Western Gull	m,	0	1	5	0	8	0	0	0
Rock Dove	r	0	8	4	2	2	0	0	0
Mourning Dove	r	13	22	24	11	24	13	4	8
Greater Roadrunner	r	1	0	0	1	0	0	0	0
Barn Owl	r	0	0	0	1	1	0	0	0
Vaux Swift	m	0	100	0	0	0	0	0	0
White-th. Swift	r	0	0	0	2	0	0	0	0
Anna's Hummingbird	r	7	1	0	3	0	2	0	4
Nuttall's Woodpecker	r	9	8	6	7	13	11	8	10
Downy Woodpecker	r	2	1	1	0	0	1	0	1
Northern Flicker	r	1	1	0	1	2	5	2	0
Western Wood Pewee	m	0	1	0	0	0	0	0	0
Pacific Slope Flycatcher	s	0	2	0	0	1	1	0	0
Black Phoebe	r	6	3	1	0	0	2	1	2
Ash-throated Flycatcher	s	6	14	15	16	10	14	9	12
Western Kingbird	s	4	2	1	3	2	1	0	4
<b>Bell's Vireo</b>	<b>s</b>	<b>1</b>	<b>2</b>	<b>1</b>	<b>7</b>	<b>0</b>	<b>5</b>	<b>1</b>	<b>1</b>
Warbling Vireo	m	0	3	0	0	0	0	0	0
Western Scrub Jay	r	10	4	6	0	1	4	3	4
American Crow	r	12	8	16	7	16	9	34	16
Common Raven	r	8	7	24	14	10	23	4	3
Tree Swallow	s	4	4	3	2	5	7	8	0
Violet-green Swallow	s	2	2	1	0	0	0	0	0
N. Rough-winged Swallow	s	2	7	4	0	8	1	10	0
Cliff Swallow	s	120	188	36	4	66	10	28	6
Oak Titmouse	r	12	4	9	2	0	6	4	6
Bushtit	r	6	9	20	10	2	0	0	0
Bewick's Wren	r	38	27	33	34	28	18	14	15
House Wren	r	27	56	36	31	42	10	0	0
Western Bluebird	r	2	4	2	0	5	5	5	5

**Table 1 (Cont.). BIRDS OBSERVATIONS ALONG THE SANTA CLARA RIVER, 2006: Santa Clara River from the mouth of Castaic Creek downstream to the Los Angeles/Ventura County Line.**

Endangered Species and Species of Concern in Bold									
SPECIES	STAT.	4/16,18	5/2,4	Dates of Surveys			6/21,22	6/30,7/1	7/10,11
				5/15,16	5/25,26	6/6,7			
Wrentit	r	9	7	3	2	9	5	3	3
Northern Mockingbird	r	1	0	0	0	0	0	0	0
California Thrasher	r	1	3	0	0	2	1	0	0
European Starling	r	17	8	20	17	19	3	6	4
Phainopepla	r	0	2	2	0	0	4	3	1
Orange-cr. Warbler	m	2	3	0	0	0	0	0	0
<b>Yellow Warbler</b>	<b>s,m</b>	<b>7</b>	<b>20</b>	<b>11</b>	<b>9</b>	<b>2</b>	<b>3</b>	<b>2</b>	<b>0</b>
Yellow-rumped Warbler	w,m	8	0	0	0	0	0	0	0
Common Yellowthroat	r	12	11	20	7	9	14	10	4
<b>Yellow-breasted Chat</b>	<b>s</b>	<b>0</b>	<b>5</b>	<b>2</b>	<b>2</b>	<b>0</b>	<b>1</b>	<b>0</b>	<b>0</b>
Western Tanager	m	0	2	0	0	0	0	0	0
Spotted Towhee	r	9	14	16	12	18	17	17	12
California Towhee	r	16	18	16	12	8	20	22	21
Savannah Sparrow	w,m	13	0	0	0	0	0	0	0
Song Sparrow	r	82	60	56	44	64	64	28	8
Lincoln's Sparrow	m	4	0	0	0	0	0	0	0
White-crowned Sparrow	w,m	8	0	0	0	0	0	0	0
Black-headed Grosbeak	s	12	17	29	11	11	25	12	4
Blue Grosbeak	s	0	0	0	0	5	5	5	2
Lazuli Bunting	s	0	0	0	1	0	1	1	0
Red-winged Blackbird	s	1	3	1	15	5	10	8	0
Great-tailed Grackle	r	0	0	0	0	0	1	0	0
Brown-headed Cowbird	s	30	6	3	5	5	2	8	0
Bullock's Oriole	s	4	5	5	1	5	14	2	8
House Finch	r	43	26	14	13	14	0	16	15
Lesser Goldfinch	r	4	8	0	2	3	0	11	0
Status: m, migrant; r, resident; s, summer only; w, winter									
numbers in parentheses are nestlings.									

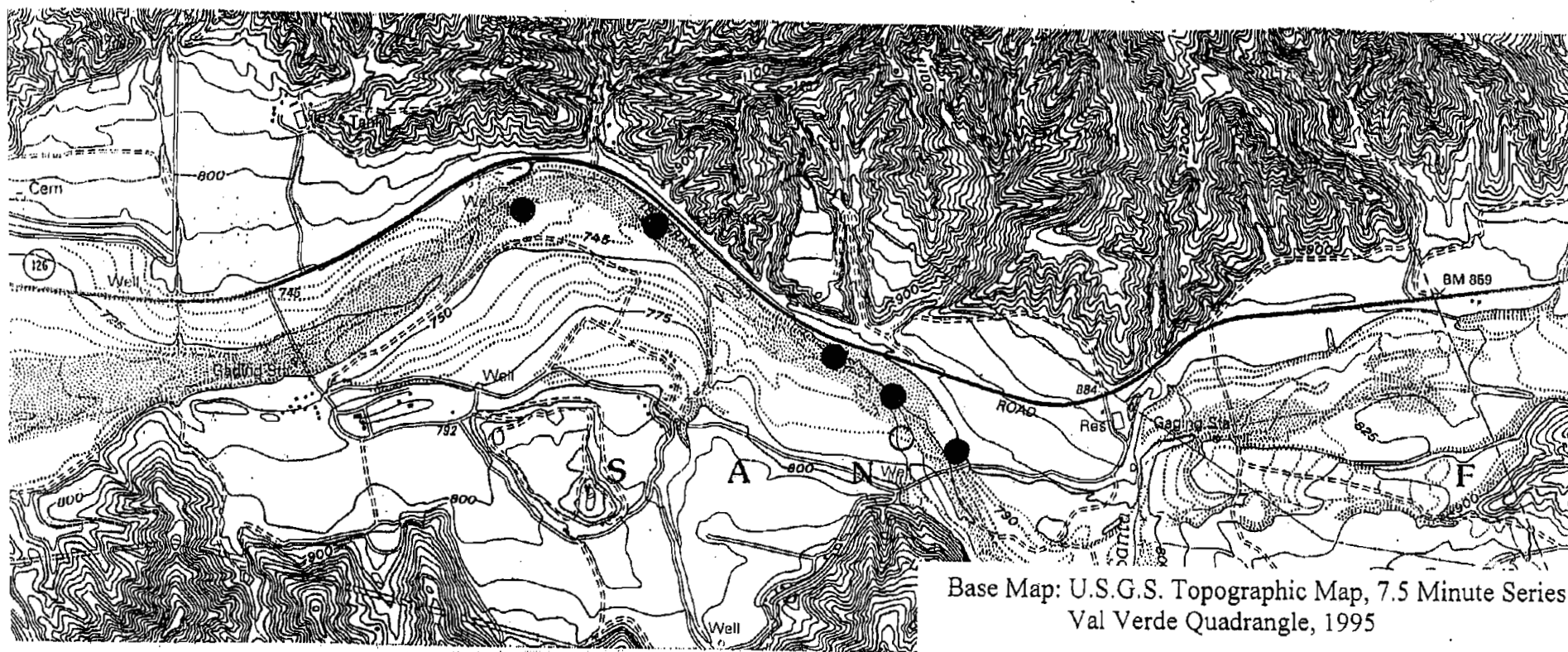
**Table 2. Bird Observations along the Santa Clara River, 2006; Los Angeles/Ventura County Line West to 1/4 mile beyond Las Brisas Bridge.**

<b>Endangered Species and Species of Concern in Bold</b>									
<b>SPECIES</b>	<b>STAT.</b>	<b>Dates of Surveys</b>							
		<b>4/18</b>	<b>5/4</b>	<b>5/16</b>	<b>5/26</b>	<b>6/7</b>	<b>6/22</b>	<b>7/1</b>	<b>7/11</b>
Great Blue Heron	m,w	0	0	0	0	0	0	1	0
Great Egret	m,w	0	0	0	0	1	0	2	0
Snowy Egret	m,w	1	7	0	0	0	0	0	0
Black-crowned Night-heron	m,w	0	0	0	0	0	1	0	0
Common Merganser	m	0	2	0	0	0	0	0	0
Turkey Vulture	s	0	1	0	3	0	0	0	0
Mallard	r	2	6	11(10)	2	9	6	13	0
<b>White-tailed Kite</b>	<b>r</b>	<b>4</b>	<b>0</b>	<b>0</b>	<b>2</b>	<b>2</b>	<b>0</b>	<b>1</b>	<b>2</b>
<b>Cooper's Hawk</b>	<b>r</b>	<b>0</b>	<b>0</b>	<b>0</b>	<b>0</b>	<b>0</b>	<b>2</b>	<b>2</b>	<b>0</b>
Red-shouldered Hawk	r	0	2	0	0	0	0	1	0
Red-tailed Hawk	r	3	5	4	2	5	3	5	3
American Kestrel	r	1	2	1	4	4	1	0	4
California Quail	r	52	52	66	34	50	42	2	49
Killdeer	r	3	13	14	7	21	25	38	32
Spotted Sandpiper	s	0	2	6	1	4	5	11	0
Rock Dove	r	0	45	26	9	45	0	0	1
Mourning Dove	r	5	22	28	43	37	28	21	21
Greater Roadrunner	r	0	0	0	0	0	1	0	0
Barn Owl	r	0	0	0	0	0	0	2	0
Vaux Swift	m	0	100	0	0	0	0	0	0
White-th. Swift	r	0	0	3	0	0	0	0	0
Black-ch. Hummingbird	r	0	0	0	1	0	0	2	0
Anna's Hummingbird	r	10	8	9	6	7	8	5	3
Costa's Hummingbird	s	0	1	0	0	0	0	0	1
Nuttall's Woodpecker	r	8	8	7	6	7	12	5	11
Downy Woodpecker	r	0	2	1	1	2	2	0	6
Hairy Woodpecker	r	0	2	0	0	1	1	0	2
Northern Flicker	r	0	1	0	0	0	0	0	0
Western Wood Pewee	m	0	1	0	0	0	0	0	0
Pacific Slope Flycatcher	s	0	0	0	0	0	1	1	0
Black Phoebe	r	4	8	5	13	8	7	8	12
Say's Phoebe	r	0	0	0	0	0	0	1	0
Ash-throated Flycatcher	s	5	17	14	12	12	13	5	20
Western Kingbird	s	0	1	0	1	1	0	0	0
<b>Bell's Vireo</b>	<b>s</b>	<b>2</b>	<b>2</b>	<b>5</b>	<b>7</b>	<b>6</b>	<b>4</b>	<b>2</b>	<b>2</b>
Warbling Vireo	m	0	2	0	0	0	0	0	0
Western Scrub Jay	r	3	7	4	7	3	6	1	5
American Crow	r	11	25	10	17	9	7	8	29
Common Raven	r	8	16	4	7	16	12	38	7
Tree Swallow	s	6	0	1	6	4	4	4	0
Violet-green Swallow	s	0	0	1	0	0	0	1	0
N. Rough-winged Swallow	s	2	7	8	8	14	4	12	2
Cliff Swallow	s	20	40	141	50	150	150	60	128
Barn Swallow	s	0	0	2	0	0	0	0	0
Oak Titmouse	r	3	3	3	6	1	7	0	7

Table 2 (Cont.). Bird Observations along the Santa Clara River, 2006; Los Angeles/Ventura County Line West to 1/4 mile beyond Las Brisas Bridge.				
--	--	--	--	--

Endangered Species and Species of Concern in Bold									
SPECIES	STAT.	Dates of Surveys							
		4/18	5/4	5/16	5/26	6/7	6/22	7/1	7/11
Bushtit	r	7	8	10	14	18	17	28	15
Bewick's Wren	r	38	34	50	36	68	41	33	22
House Wren	r	34	32	28	30	40	2	4	1
Western Bluebird	r	3	6	8	1	0	1	3	2
American Robin	r	0	0	2	0	0	0	0	0
Wrentit	r	6	3	2	8	4	5	7	16
Northern Mockingbird	r	0	1	0	0	0	0	0	0
California Thrasher	r	3	3	4	5	9	1	3	5
American Pipit	w,m	3	0	0	0	0	0	0	0
Cedar Waxwing	w,m	16	0	0	0	0	0	0	0
European Starling	r	21	15	15	6	26	3	8	9
Phainopepla	r	0	0	6	8	10	8	2	7
Orange-cr. Warbler	w,m	1	3	0	0	0	0	0	0
<b>Yellow Warbler</b>	<b>s,m</b>	<b>5</b>	<b>18</b>	<b>16</b>	<b>12</b>	<b>10</b>	<b>7</b>	<b>1</b>	<b>1</b>
Yellow-rumped Warbler	w,m	19	9	0	0	0	0	0	0
Common Yellowthroat	r	6	32	34	38	37	43	37	7
Wilson's Warbler	m	1	13	0	0	0	0	0	0
<b>Yellow-breasted Chat</b>	<b>s</b>	<b>2</b>	<b>2</b>	<b>2</b>	<b>6</b>	<b>4</b>	<b>3</b>	<b>1</b>	<b>3</b>
Western Tanager	m	0	0	0	1	0	0	0	0
Spotted Towhee	r	12	25	19	32	36	37	18	58
California Towhee	r	35	23	36	35	28	19	31	78
Lark Sparrow	r	0	0	2	0	0	0	2	9
Song Sparrow	r	102	112	114	74	98	76	40	50
Lincoln's Sparrow	m	0	0	0	1	0	0	0	0
White-crowned Sparrow	w,m	10	0	0	0	0	0	0	0
Black-headed Grosbeak	s	6	24	22	22	10	32	20	11
Blue Grosbeak	s	0	2	6	2	1	0	5	4
Lazuli Bunting	s	1	6	3	1	1	0	3	2
Red-winged Blackbird	s	50	44	52	20	90	27	0	2
Brewer's Blackbird	r	0	0	9	0	0	3	4	0
Brown-headed Cowbird	s	3	13	21	27	27	21	13	36
Hooded Oriole	s	2	4	4	5	5	2	5	0
Bullock's Oriole	s	3	9	5	9	7	5	4	3
House Finch	r	78	55	44	46	46	45	48	76
Lesser Goldfinch	r	19	16	39	44	23	24	17	66
American Goldfinch	r,m	0	4	7	8	0	1	0	0
House Sparrow	r	0	0	0	6	0	0	0	6
Status: m, migrant; r, resident; s, summer only; w, winter									
numbers in parentheses are nestlings.									

**Figure 1. Least Bell's Vireo sightings in 2006, Ventura County**



**Approximate location of territorial male least Bell's vireo**

● multiple sightings

○ single sighting

Figure 2. Least Bell's Vireo sightings in 2006, Los Angeles County

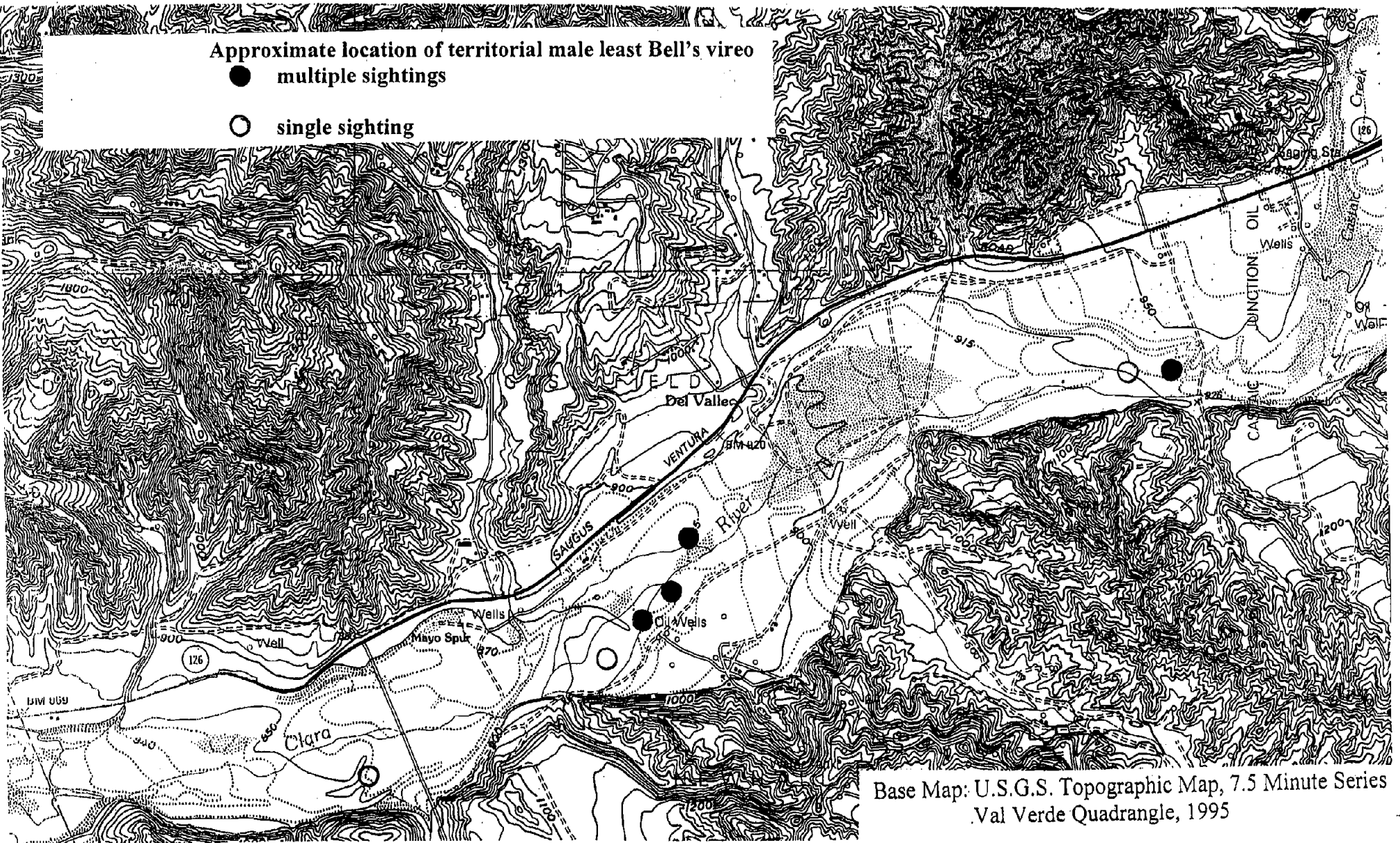
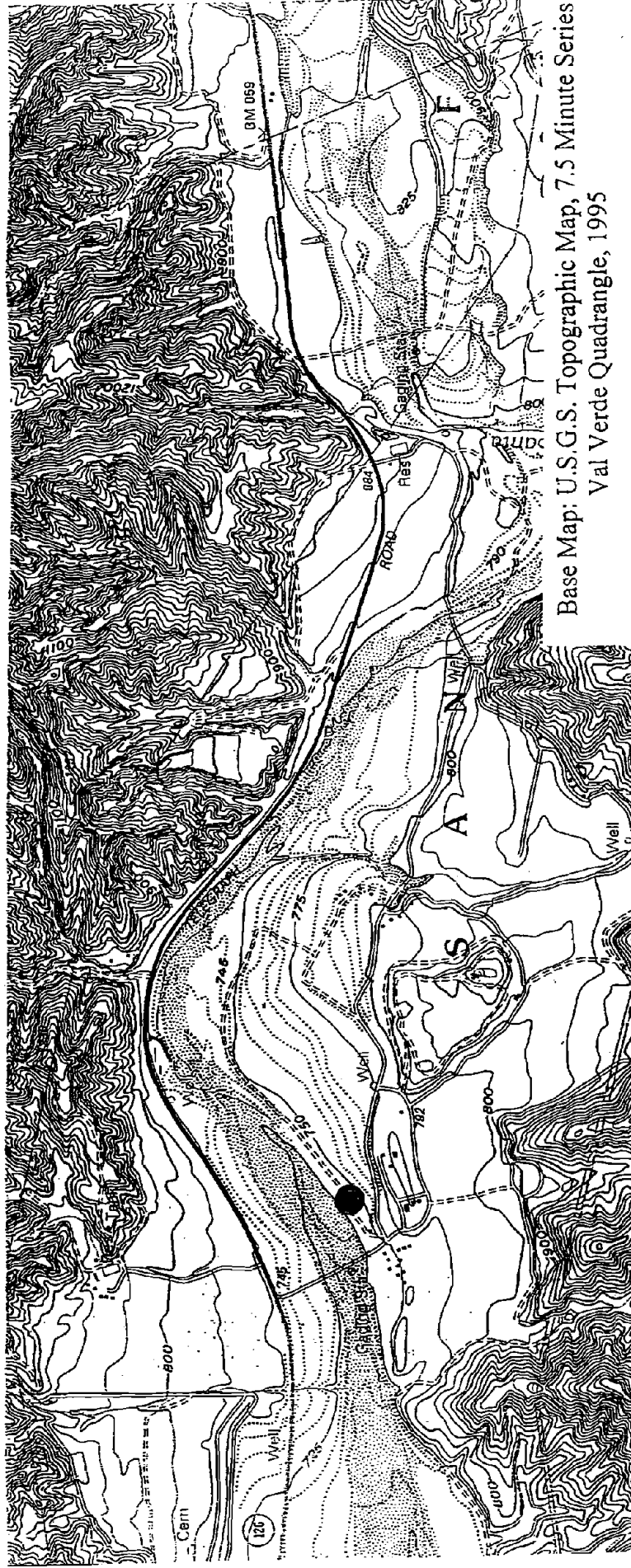
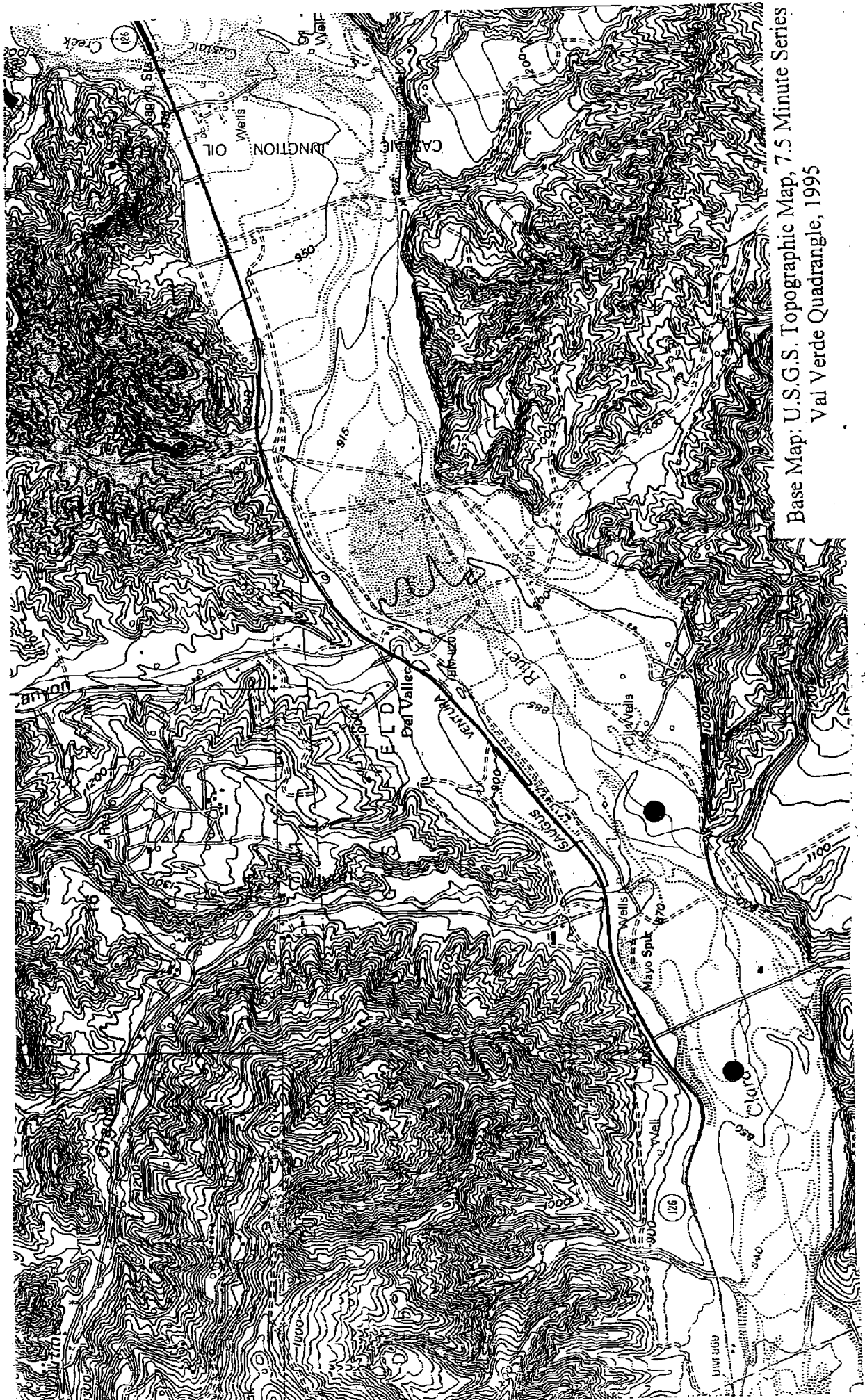


Figure 3. White-tailed Kite activity in 2006, Ventura County



● Approximate location of white-tailed kite nest

Figure 4. White-tailed Kite activity in 2006, Los Angeles County



● Approximate location of white-tailed kite nest.

Site Name Santa Clara River: Newhall Ranch, Los Angeles County Total Site No

Was site surveyed in previous year? Yes No

Drainage Santa Clara RiverIf yes, what site name was used? lower Santa Clara RiverCounty Los Angeles State CA USGS Quad Name Val Verde*Is copy of USGS map marked with survey area and WIFL sightings attached (as required)?* ☒ Yes ☐ NoSite Coordinates: Start: N 34 25.300 W 118 36.755 UTMStop: N 34 24.197 W 118 41.307 UTM Zone Elevation 840-950 ft. feet / meters (circle one)**\*\* Fill in additional site information on back of this page \*\***

Survey # Observer(s)	Date (m/d/y) Survey time	Number of WIFLs Found	Estimated Number of Pairs	Estimated Number of Territories	Nest(s) Found? Y or N	Cowbirds Detected? Y or N	Presence of Livestock, Recent sign Y or N	Comments about this survey (e.g., evidence of pairs or breeding, number of nests, nest contents or number of fledges seen; potential threats)
D. Guthrie _____ _____	Date 5/15,16 start 6:30-8:30 6:30-7:30 total hrs <u>3.0</u>	0	0	0	n	Y	N	Non singing
D. Guthrie _____ _____	Date 5/25,26 Start 6:30-8:30 6:30 - 7:30 total hrs <u>3.0</u>	0	0	0	n	Y	N	
D. Guthrie _____ _____	Date 6/6,7 Start 6:30-9:00 6:30 - 7:30 total hrs <u>3.50</u>	0	0	0	n	Y	N	
D. Guthrie _____ _____	Date 6/21,22 start 5:30-8:00 6:30-7:30 total hrs <u>3.5</u>	0	0	0	n	Y	N	?
D. Guthrie _____ _____	Date 6/30,7/1 start 5:30-8:00 6:30 - 7:30 total hrs <u>3.5</u>	0	0	0	n	Y	N	
Overall Site Summary (Total only resident WIFLs)		Adults 0	Pairs 0	Territories 0	Nests 0	Were any WIFLs color-banded? No If yes, report color combination(s) in the comments section on back of form		
Total survey hrs <u>16.5</u>								

Name of Reporting Individual Dan Guthrie Date Report Completed 7/20/06**Submit the original of this form. Retain a copy for your records.**

**Fill in the following information completely. Submit original form. Retain copy for your records.**

Name of Reporting Individual Dan Guthrie Phone # 909 607 2836

Affiliation Claremont Colleges Email dguthrie@jsd.claremont.edu

Site Name Santa Clara River:Newhall Ranch, los Angeles County

Did you verify that this site name is consistent with that used in previous years? Yes No ? (circle one)

This is a section of site previously lumped as lower Santa Clara River

Management Authority for Survey Area (circle one):

Federal Municipal/County State Tribal Private

Name of Management Entity or Owner (e.g., Tonto National Forest) Newhall Land Co.

Length of area surveyed: 4 miles (specify units, e.g., miles = mi, kilometers = km, meters = m)

Did you survey the same general area during each visit to this site this year? Yes / If no, summarize in comments below.

If site was surveyed last year, did you survey the same general area this year? Yes / If no, summarize in comments below.

Vegetation Characteristics: Overall, are the species in tree/shrub layer at this site comprised predominantly of (check one):

Native broadleaf plants

☒ ☐ Mixed native and exotic plants (mostly native)  
(entirely or almost entirely, includes high-elevation willow)

☐ Mixed native and exotic plants (mostly exotic) ☐ Exotic/introduced plants (entirely or almost entirely)

Identify the 2-3 predominant tree/shrub species: Cottonwood, willow, Tamarisk, Arrundo

Average height of canopy: 40 ft. (specify units)

Was surface water or saturated soil present at or adjacent to site? YES

Distance from the site to surface water or saturated soil: (specify units)

Did hydrological conditions change significantly among visits (did the site flood or dry out)? No (circle one)

If yes, describe in comments section below. no water present except for 50 yd section trickle in center of section.

Remember to attach a xerox copy of a USGS quad/topographical map (REQUIRED) of the survey area, noting the survey site and location of WIFL detections. You may also include a sketch or aerial photograph showing details of site location, patch shape, survey route in relation to patch, and location of any willow flycatchers or willow flycatcher nests detected. Such sketches or photographs are welcomed, but DO NOT substitute for the required USGS quad map.

Comments (attach additional sheets if necessary):  
each survey conducted on two consecutive days

an additional survey was conducted on July 10,11 for three hours with no sightings.

This is a detailed topographic map of the Val Verde Quadrangle, 1995. The map features contour lines indicating elevation, with labels such as 900, 1000, and 1100. A prominent feature is the Rio Grande, which flows through the center of the map. Other labeled areas include 'Del Valle', 'Mayo Spuit', 'Wells', 'Oil', and 'JUNCTION'. A large black arrow points towards the top right, and a smaller black arrow points towards the bottom right. The map is oriented with North at the top.

Base Map: U.S.G.S. Topographic Map, 7.5 Minute Series  
Val Verde Quadrangle, 1995

Base Map: U.S.G.S. Topographic Map, 7.5 Minute Series  
Val Verde Quadrangle, 1995

## Willow Flycatcher Survey and Detection Form (rev. 4/98)

2006

Site Name Santa Clara River, Newhall Ranch, Ventura Co. ~~Total Site No~~ \_\_\_\_\_Was site surveyed in previous year? **Yes**Drainage Santa Clara RiverIf yes, what site name was used? Lower Santa Clara RiverCounty Ventura State CA USGS Quad Name Val Verde*Is copy of USGS map marked with survey area and WIFL sightings attached (as required)?* ☒ **Yes** ☐ **No**Site Coordinates: Start: N 34 24.197 W 118 41.307 UTM  
Stop: N 34 24.265 W 118 44.370 UTM Zone \_\_\_\_\_Elevation 725-850 ft. \_\_\_\_\_ feet / meters (circle one)**\*\* Fill in additional site information on back of this page \*\***

Survey # Observer(s)	Date (m/d/y) Survey time	Number of WIFLs Found	Estimated Number of Pairs	Estimated Number of Territories	Nest(s) Found? Y or N	Cowbirds Detected? Y or N	Presence of Livestock, Recent sign Y or N	Comments about this survey (e.g., evidence of pairs or breeding, number of nests, nest contents or number of fledges seen; potential threats)
D. Guthrie J. Sugden _____ _____	Date 5/16 start 6:30 stop 9:30 total hrs <u>3.0</u>	0	0	0	n	Y	n	
D. Guthrie J. Sugden _____ _____	Date 5/26 Start 6:30 Stop 9:30 total hrs <u>3</u>	0	0	0	n	Y	N	
D. Guthrie J. Sugden _____ _____	Date 6/7 Start 6:30 Stop 9:30 total hrs <u>3.0</u>	0	0	0	n	Y	N	
D. Guthrie J. Sugden _____ _____	Date 6/22 start 6:30 stop 9:30 total hrs <u>3.0</u>	0	0	0	n	Y	N	
D. Guthrie J. Sugden _____ _____	Date 7/1 start 5:30 stop 8:30 total hrs <u>3.0</u>	0	0	0	n	Y	N	In suitable habitat, but not seen on earlier censuses, possibly a migrant heading south.
Overall Site Summary (Total only resident WIFLs) Total survey hrs <u>25.0</u> Sugden. 15.0 guthrie 10.0		Adults 0	Pairs 0	Territories 0	Nests 0	Were any WIFLs color-banded? <b>No</b>  If yes, report color combination(s) in the comments section on back of form		

Name of Reporting Individual Dan Guthrie Date Report Completed 7/20/06**Submit the original of this form. Retain a copy for your records.**

**Fill in the following information completely. Submit original form. Retain copy for your records.**

Name of Reporting Individual Dan Guthrie Phone # 909 607 2836

Affiliation Claremont Colleges Email dguthrie@jsd.claremont.edu

Site Name Santa Clara River, Newhall Ranch, Ventura Co.

Did you verify that this site name is consistent with that used in previous years? Yes No ? (circle one)  
called lower Santa Clara River in previous surveys.

Management Authority for Survey Area (circle one):

Federal Municipal/County State Tribal Private

Name of Management Entity or Owner (e.g., Tonto National Forest) Newhall Land Co.

Length of area surveyed: 3 miles (specify units, e.g., miles = mi, kilometers = km, meters = m)

Did you survey the same general area during each visit to this site this year? Yes / If no, summarize in comments below.

If site was surveyed last year, did you survey the same general area this year? Yes / If no, summarize in comments below.

Vegetation Characteristics: Overall, are the species in tree/shrub layer at this site comprised predominantly of (check one):

☐ Native broadleaf plants

☒ **Mixed native and exotic plants (mostly native)**  
(entirely or almost entirely, includes high-elevation willow)

☐ Mixed native and exotic plants (mostly exotic)

☐ Exotic/introduced plants (entirely or almost entirely)

Identify the 2-3 predominant tree/shrub species: Cottrtonwood, willow, tamarisk, Arundo

Average height of canopy: 40 ft. (specify units)

Was surface water or saturated soil present at or adjacent to site? Yes -- river free flowing through whole section.

Distance from the site to surface water or saturated soil: 30 feet (specify units)

Did hydrological conditions change significantly among visits (did the site flood or dry out)? No (circle one)

If yes, describe in comments section below. no water present except for 50 yd section trickle in center of section.

Remember to attach a xerox copy of a USGS quad/topographical map (REQUIRED) of the survey area, noting the survey site and location of WIFL detections. You may also include a sketch or aerial photograph showing details of site location, patch shape, survey route in relation to patch, and location of any willow flycatchers or willow flycatcher nests detected. Such sketches or photographs are welcomed, but DO NOT substitute for the required USGS quad map.

Comments (attach additional sheets if necessary):

two observers, each surveying approximately 1.5 miles. Guthrie surveys took 2 hours. Sugden Surveys took three hours.

An additional survey was conducted on 7/11 with no sightings.

Area along the Santa Clara River Surveyed for Willow Flycatcher, Ventura County

