
**Guthrie, D.A., "Bird Surveys along a Portion of the Santa Clara River and Its
Tributaries Upstream from the Castaic Creek Confluence, near Valencia
California" (October 11, 2006; 2006C)**

2006
Birds

BIRD SURVEYS ALONG A PORTION OF THE
SANTA CLARA RIVER AND ITS TRIBUTARIES
UPSTREAM FROM THE CASTAIC CREEK CONFLUENCE,
NEAR VALENCIA, CALIFORNIA, 2006

Prepared for:

Matt Carpenter
Valencia Corporation
23823 Valencia Blvd.
Valencia, Ca. 91355

Prepared by:

Daniel A. Guthrie
W.M. Keck Science Center
925 N. Mills Ave
Claremont Ca. 91711
(909) 607-2836
dguthrie@jsd.claremont.edu

FINAL REPORT

October 11, 2006

**Bird Surveys along a Portion of the Santa Clara River Upstream from
the Castaic Creek Confluence, near Valencia, California, 2006**

Prepared by: Daniel A. Guthrie
W.M. Keck Science Center
925 N. Mills Ave
Claremont Ca. 91711
(909) 607-2836

Nature and Scope of Surveys

During the spring and early summer of 2006 surveys were conducted along a section of the Santa Clara River and its tributaries near Valencia, California (Figure 1). Surveys were focused on determining presence or absence of yellow-billed cuckoo, least Bell's vireo and southwestern willow flycatcher, and followed U.S. Fish and Wildlife Service Survey Protocols for the latter two species. Numbers of all species observed were noted, and, in addition to the three species noted above, special attention was placed on locating species considered rare and endangered or of Special Concern, and on determining numbers of brown-headed cowbirds.

Each survey was conducted on foot by observers well acquainted with visual, auditory and behavioral characteristics of southern California birds. Survey routes were designed to cover all areas of each section of the river, with emphasis placed on wetter habitats where least Bell's vireos and other sensitive riparian species are most likely to occur. All surveys occurred between 6:00 and 10:00 a.m. If focus species (yellow-billed cuckoo, least Bell's vireo, and southwestern willow flycatcher), were not visually observed, tapes of their calls were played in an attempt to elicit a response. Personnel for all surveys were Daniel A. Guthrie and Judith A. Sugden, both working under Federal Fish and Wildlife Service Permit number TE810394-2, issued under section 10(a)(1)(A) of the Endangered Species Act and under an MOU from State of California Department of Fish and Game, dated April 23, 2003.

To facilitate surveys and observe the coverage guidelines for focus species, the area was divided into eight sections (Figure 1). Delineation of the eight areas and comments on each follow. Surveys of all sections of the river system were conducted five times during the nesting season and followed the Revised Protocol (Fish And Wildlife Service, July 2000) for southwestern willow flycatcher. Several sections of the river (Areas 4, 6-8) had little running water and no development of wet riparian vegetation and were not considered suitable habitat for least Bell's vireo. However, areas 1-3 and 5 had flowing water and wet riparian vegetation. These sections were surveyed according to the protocol for least Bell's vireo as outlined by the Fish and Wildlife Service. This latter protocol requires 8 surveys between April 10 and July 31st, at least 10 days apart.

Habitat Condition and Bird Observations.

The riparian zone of the Santa Clara River, as described here, consists of two major habitat types, a wet riparian zone and a dry riparian woodland. The wet riparian zone consists of obligatory wet plants such as cattail and watercress found in continually moist soils along the active river channel and some willow, tamarisk and *Baccharis* shrubs also found in this zone. This zone undergoes regular scouring in the winter which removes most annual vegetation and, depending on the severity of the flooding, some of the larger plants. Flooding in 2006 removed annual vegetation along the river channel but was not severe enough to damage perennial plants. Annual plant growth was well developed by June, supported by higher than normal runoff and underground flow.

The dry riparian zone consists of larger trees and shrubs further back from the active river which obtain moisture through their deep root system. The severe flooding of 2005 removed large sections of this zone, but caused good growth of remaining trees by restoring ground water supplies. This zone was not damaged in 2006 but continued to show good growth.

Observations of all birds are shown in Tables 1-8. The numbers shown are of birds seen and heard, with heard individuals forming the majority of the observations. Numbers vary between censuses. Bird activity varies with season. Different species breed at different times of the year. In general, species are most easily observed when they are actively defending territories by song during the establishment of breeding pairs. Once pairs are established and nesting begins song often decreases and the numbers of birds observed, therefore, also decreases. After young leave the nest, numbers observed may increase. Thus, for most resident species, numbers of adult birds are most accurately censused in April and May, when territorial activity is at a maximum. A few species such as Anna's hummingbird that nest early in the season may be underestimated. Many species that nest in the area also migrate through the area to more northern portions of their ranges. Thus, numbers of nesting species observed in May, which include migratory birds passing through the area, do not give an accurate count of actual resident birds.

Area 1 (Table 1). Santa Clara River; The Old Road Bridge to the mouth of Castaic Creek.

Length of section, 3.5 miles. The Santa Clara River flows continuously in this section, receiving most of its flow from the Valencia wastewater outfall near the upstream end of this section and from some irrigation runoff from Magic Mountain and agricultural fields along the north side.

Area 2 (Table 2). Santa Clara River; McBean Parkway downstream to The Old Road.

Length of section, 1.4 miles. There was very low flow from McBean Parkway west to the pipeline crossing where seepage within the stream channel and inflow from San Francisquito Creek augmented flow which continued to The Old Road at the end of this section.

Area 3 (Table 3). Santa Clara River; Bouquet Canyon Road downstream to McBean Parkway

Length of section, 1.2 miles. Water, supplied by the Saugus wastewater outfall at the Bouquet Canyon Bridge and a small flow from Bouquet Canyon provided water only to the upper quarter mile of this section. The remainder was dry throughout the survey period.

Area 4 (Table 4). Santa Clara River; Bouquet Canyon Road upstream to DWP transmission lines.

Length of section, 2.3 miles. The river channel in this section consists of a broad, flat, dry wash with narrow margins of dry riparian woodland. Within the channel are areas of coastal sage scrub habitat. This section of the Santa Clara River in past years has been wet only briefly during spring rains. This year seeps from ground water began half way down this section, creating a small marsh area. This was augmented by pumping from construction on the north side of the river. This construction removed much coastal sage scrub and ruderal habitat.

Area 5 (Table 5). Castaic Creek; Route 126 to Interstate 5.

Length of section, 1.8 miles. Flow was heavy along Castaic Creek until late June, when the river dried up. Restoration of agricultural fields along the north side of the river to the west of Commerce Center Drive removed some coastal sage vegetation bordering the river channel.

Area 6 (Table 6). San Francisquito Creek; Santa Clara River upstream to Copper Hill Drive Crossing.

Length of section, 2.5 miles. There was a little flow in San Francisquito Creek in early April, but for most of the survey period the creek was dry except for seeps near the power line crossing. Catchment basins constructed along the west side of the channel supported cattails and some nesting of red-winged blackbirds. Barn owls nested under the Copper Hill and Decoro Bridges and a Cooper's hawk nested about ½ mile south of the Copper Hill crossing.

Area 7 (Table 7). South Fork of the Santa Clara River; McBean Parkway to Magic Mountain Parkway (Route 126).

Length of section, 1.0 miles. The channel along this section of the South Fork is narrow and very sandy. Along most of this section vegetation is restricted to a narrow band of dry woodland at each side of the channel and a few pockets of wet vegetation supported by runoff from adjacent development. Lack of flooding on this section in recent years coupled with good spring rains and subterranean flow has resulted in much growth of vegetation.

Area 8 (Table 8). South Fork of the Santa Clara River, Route 126 upstream to Newhall Creek.

Length of section, 1.4 miles. This section of the river consists of a wide sandy channel intersected by several concrete sills designed to restrict sand movement and flood damage. The

river is entirely bordered by developed areas but contains small islands of dry riparian vegetation and some wet riparian areas formed by runoff from culverts along the sides of the creek. Spring floods damaged some of the flood control barriers and, although there was no surface water flow during the survey period, replenishment of subterranean flow rejuvenated much of the dry riparian vegetation.

Comments on Threatened and Endangered Species

Yellow-billed Cuckoo (*Coccyzus americanus*)

The Yellow-billed Cuckoo is listed as a State Endangered Species. Despite playing taped calls of this species during June and July surveys, no individuals of this species were observed in 2006.

Southwestern Willow Flycatcher (*Empidonax traillii extimus*)

This subspecies is listed as Federally Endangered under the Federal Endangered Species Act. Willow flycatchers were once widespread in wet riparian woodland in southern California but now fewer than 70 pair remain, with the major concentrations being along the Kern River in Kern County and the Santa Margarita River in San Diego County. Following the Revised Protocol (Fish And Wildlife Service, July 2000) five surveys (see tables 1-8 for dates) were conducted specifically for southwestern willow flycatcher. All surveys occurred between 6:00 and 10:00 am. and used taped calls to elicit a response if flycatchers were not first observed.

Four willow flycatchers were observed in 2006 (Figure 2). A single observation was made on May 28th along San francisquito Creek in a willow forest approximately ½ mile south of the Copper Hill Rd. crossing. Three observations were made along the Santa Clara River between ¼ and ½ mile below the Old Road bridge. Two of these observations were on May 5th, and a single observation was on June 8th. All four of these observations were of silent birds and subsequent visits to the sighting areas failed to make any additional observations despite use of taped calls to elicit responses.

Willow flycatchers are fairly common migrants through southern California and most of the migrants are believed to be of the more northern common subspecies of willow flycatcher, *E. t. brewsteri*, which breeds throughout southern Canada and the northern United States, rather than representatives of the southwestern subspecies *E. t. extimus*. Southwestern willow flycatchers are positively identified primarily by nesting within the geographic area of their range or by measurements of in hand specimens. Three of the 2006 observations were in the time frame

when the northern subspecies is migrating through the area. Lacking any subsequent evidence of nesting, these observations of a willow flycatcher cannot be positively identified as belonging to the southwestern form of willow flycatcher.

The report forms required for this species are attached and will be forwarded to the Ventura Office of the U.S. Fish and Wildlife Service.

Least Bell's Vireo (*Vireo bellii pusillus*)

Surveys of the wet riparian areas (Areas 1-3,5) followed U.S. Fish and Wildlife Service Guidelines for least Bell's vireo. Eight surveys were conducted in each area between April 10 and July 31 (see Tables 1-3,5 for dates). All surveys occurred between 6:00 and 10:00 am. . The least Bell's vireo is a very vocal species and most birds were located without the use of taped calls. However, tapes were used to elicit responses in early spring, before vireo arrival, in late summer, when vireos were less vocal, and in areas of marginal habitat or where vireos were expected from previous sightings but could not be heard. A calling vireo was considered a territorial male. If a second, silent bird was observed in the same area, a pair was considered to be present. However, to avoid disturbance, no efforts were made to find nests, locate with certainty females in territories, or to locate fledged young in established territories. Numbers of vireos shown in the tables are actual numbers of birds observed. These numbers include all vireos, both singing and silent. In order to avoid disturbing vireos, no special efforts were made to determine nesting success or presence of leg bands once birds were observed. However, at each location where vireos were found, they were observed at least once, and no leg bands were observed.

Least Bell's vireos were regularly observed along the Santa Clara River at Castaic Junction in an extensive stand of willows. Most surveys found vireos in 4 areas, as shown on Figure 3, but on May 28th an additional vireo was sighted. This last vireo could not be refound. Also, a pair of vireos were regularly found along Castaic Creek and two additional birds were also found here on May 15th but not subsequently. The total number of pairs, five, is one more than were found in 2005.

Comments on Sensitive Species

Great Blue Heron (*Ardea herodias*)

Great blue herons are listed on the California Natural Diversity Data Base as a species that warrants monitoring. Herons were occasionally observed hunting along the river and flying over the river corridor between ponds in the adjacent housing developments and golf courses.

Great Egret (*Ardea alba*)

The great egret is listed on the California Natural Diversity Data Base as a species that warrants monitoring. Individuals of this species were observed sparingly along the river and probably represent non-breeding individuals. No evidence of nesting was observed.

White-tailed Kite (*Elanus leucurus*)

This species, formerly the black-shouldered kite, is considered a Species of Special Concern by the State of California. Two pair of kites nested and fledged young (three each) along the Santa Clara River east of Bouquet Canyon Bridge (Figure 4). Both pairs fledged three young, but the young birds disappeared and only adult birds were seen in late June and July. A third pair of kites nested along Castaic Creek and a fourth pair nested on the Santa Clara river just downstream from the Old Road bridge (figure 4).

Cooper's Hawk (*Accipiter cooperii*)

Cooper's hawk is considered a Species of Special Concern by the State of California. A Cooper's Hawk nested along San Francisquito Creek a little below the Copper Hill Crossing. Nesting also occurred in the dry riparian forest along Castaic Creek. Immature birds were observed in both places, indicating successful fledging of young. Cooper's hawk nested in both these locations in 2005.

California Horned Lark (*Eremophila alpestris actia*)

This is a California Special Concern species. Although none were observed nesting on the study site, horned larks are ground nesters that prefer bare hillsides and abandoned fields. A few were observed feeding on bare fields along Castaic Creek and near the main river at Castaic Junction.

Yellow Warbler (*Dendroica petechia*)

The yellow warbler is considered a Species of Special Concern by the State of California. Yellow warblers prefer wet riparian habitat but are also found in large cottonwoods in drier riparian areas. Singing yellow warblers were observed throughout the survey period along sections 1, 2 (main river from McBean Parkway to Castaic Creek) and 5 (Castaic Creek) and probably nested in these areas. Observations in sections 3, 4, 6-8 only occurred during the period when yellow warblers are migrating through the area.

Yellow-breasted Chat (*Icteria virens*)

The yellow-breasted chat is considered a Species of Special Concern by the State of California. Chats were rarely observed along the main river between McBean crossing and the mouth of Castaic Creek and along Castaic Creek.

Southern California Rufous-crowned Sparrow (*Aimophila ruficeps canescens*)

This species is considered a California Special Concern species by the Department of Fish and Game and is also a Federal Special Concern species. A single bird was observed once along Castaic Creek.

Tricolored Blackbird (*Agelaius tricolor*)

This species is considered a California Special Concern species by the Department of Fish and Game. Single birds were occasionally observed along the river but no nesting colonies were located.

Comments of Brown-headed Cowbirds

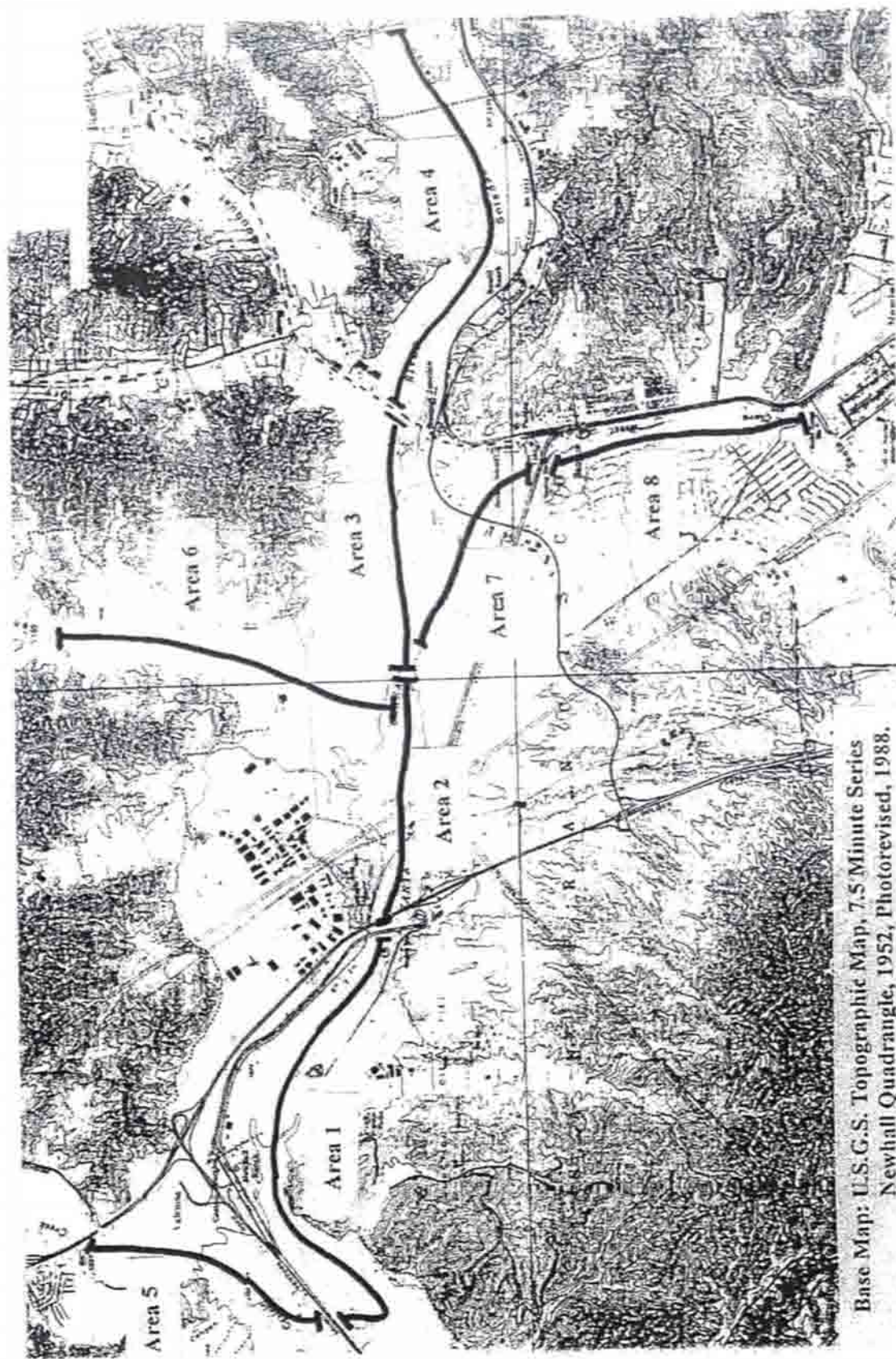
Although not a Species of Concern, comments about this species are warranted due to its influence on several endangered species. Cowbirds were regularly observed in small numbers along all sections of the Santa Clara River, usually flying along the riparian corridor searching for either mates or potential nests to parasitize. Cowbird females often responded to taped calls of least Bell's Vireo.

Summary

No yellow-billed cuckoos were observed in 2006. Four willow flycatchers, three during the migration period for this species. Based on the non-singing behavior of these birds and failure to find them on subsequent visits, they are thought to be migrants passing through the area. It is not known which subspecies these birds represented. Five pairs of Least Bell's vireos were regularly observed at Castaic Junction and along Castaic Creek. Two additional singing males were observed on only a single survey.

Four riparian Species of Concern, white-tailed kite, Cooper's hawk, yellow warbler and yellow-breasted chat nested in small numbers along wet sections of the river. An additional riparian species, the tricolored blackbird, was a rare visitor along the river. Other Species of Concern that were observed include two migrant and/or wintering species; great blue heron and great egret, and two visitors from nearby coastal sage scrub habitat; horned lark, and rufous-crowned sparrow. Cowbirds were observed along all sections of the river and were most numerous along the wet sections of the river where the wet riparian species that they parasitize were present.

Figure 1. Survey Areas along the Santa Clara River and Tributaries.



Base Map: U.S.G.S. Topographic Map, 7.5 Minute Series
Newhall Quadrangle, 1952, Photorevised, 1988.

Figure 2. Willow Flycatcher observations in 2006.

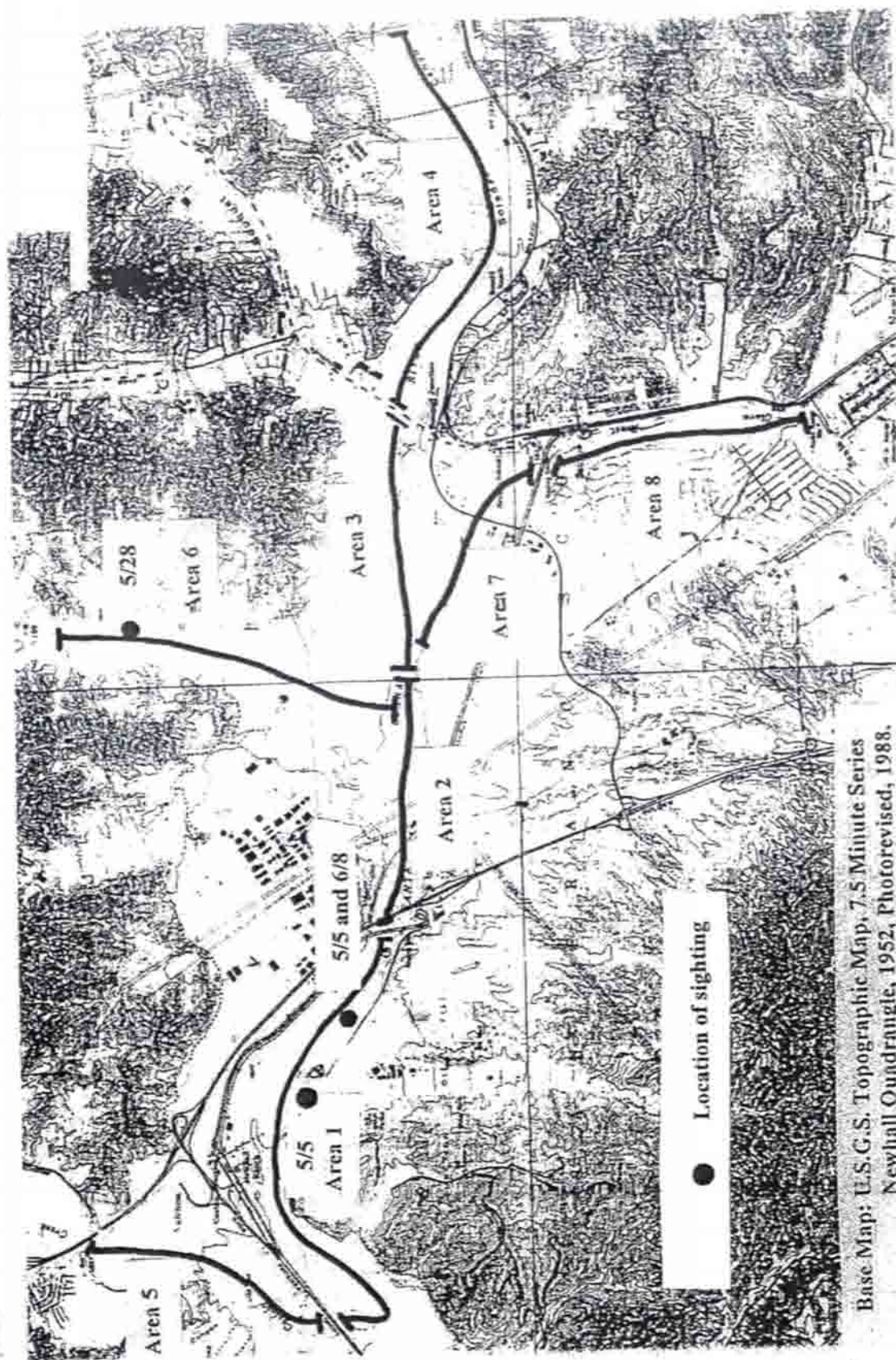
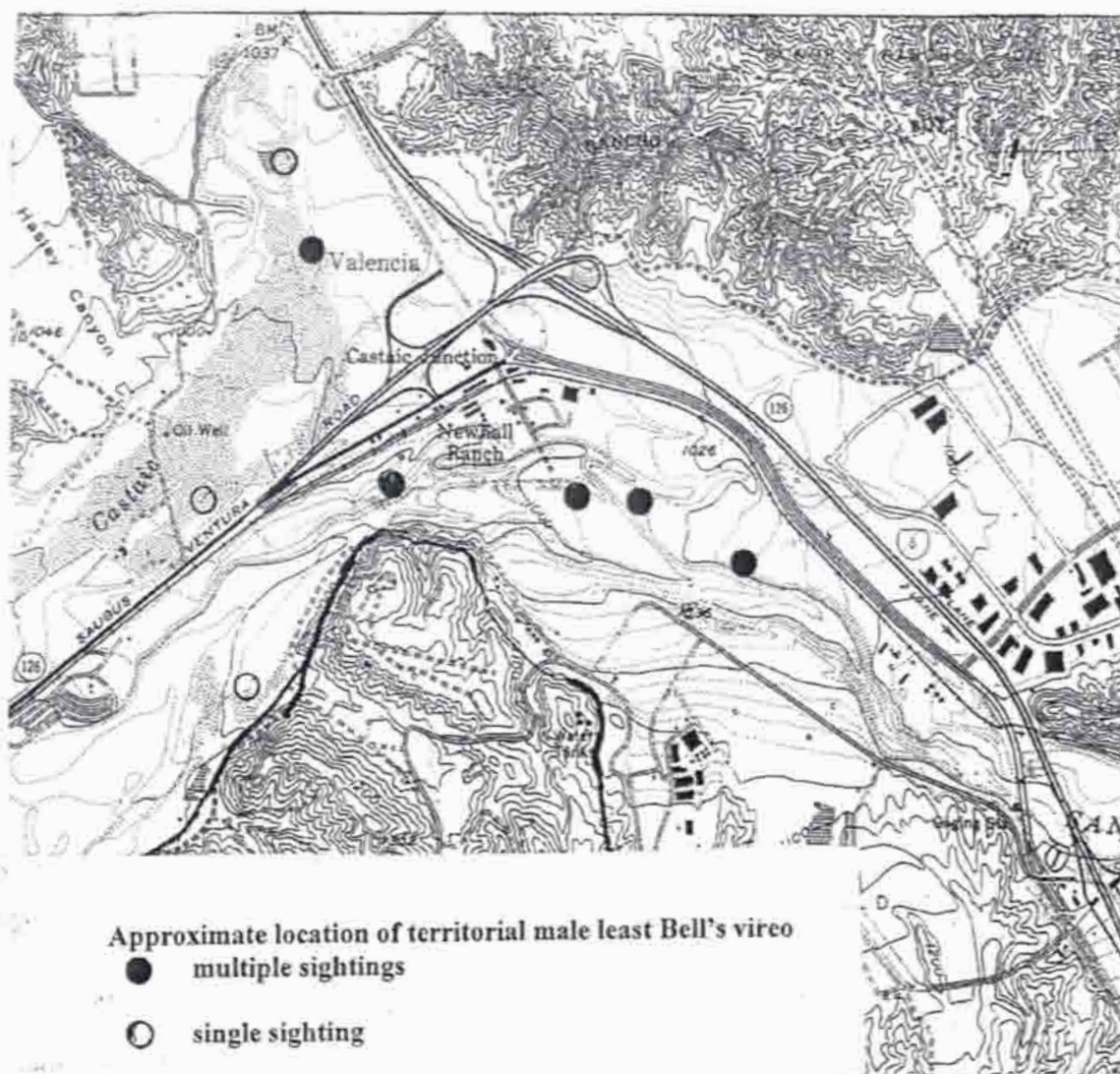


Figure 3. Least Bell's Vireo observations in 2006



Base Map: U.S.G.S. Topographic Map, 7.5 Minute Series
Newhall Quadrangle, 1952, Photorevised, 1988

Figure 4. White-tailed Kite activity in 2006.

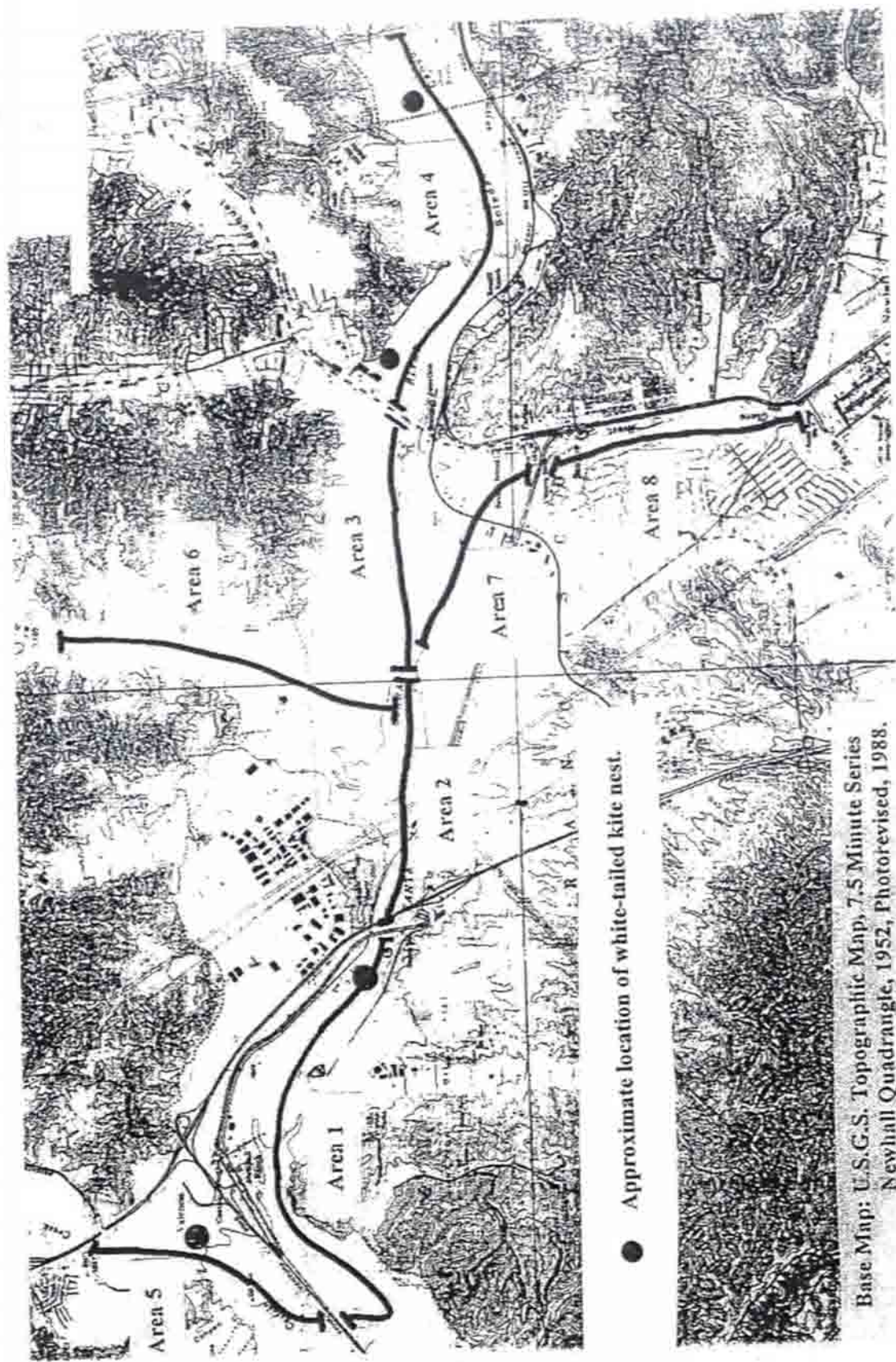


Table 1. BIRDS OF THE SANTA CLARA RIVER BASIN, 2006: Santa Clara River from
The Old Road downstream to the mouth of Castaic Creek.

Endangered Species and Species of Concern in Bold									
SPECIES	STAT.	Dates of Surveys							
		4/20	5/5	5/17	5/27	6/8	6/23	7/2	7/12
Great Blue Heron	m,w	1	0	0	0	0	0	0	0
Great Egret	m,w	2	0	0	0	0	0	0	0
Green Heron	r	3	0	0	0	1	0	2	1
Black-crowned Night-heron	m,w	0	0	0	2	0	0	0	0
Turkey Vulture	s	2	0	0	1	0	0	0	0
Mallard	r	7	2	15	10	1	0	3	4
White-tailed Kite	r	5	2	5	6	6	2	1	8
Cooper's Hawk	r	2	0	1	0	0	1	2	1
Red-shouldered Hawk	r	1	2	0	3	6	7	3	2
Red-tailed Hawk	r	3	4	5	1	3	2	0	2
American Kestrel	r	1	0	0	1	1	4	0	0
California Quail	r	23	4	9	10	18	42	14	11
Killdeer	r	9	9	6	9	14	12	38	16
Spotted Sandpiper	s	0	0	0	1	0	0	0	0
Rock Dove	r	0	0	0	3	0	0	2	3
Mourning Dove	r	47	15	10	18	16	58	14	60
Greater Roadrunner	r	0	0	0	0	0	0	0	1
White-th. Swift	r	18	0	6	0	4	0	2	0
Black-ch. Hummingbird	s	0	0	0	1	0	0	0	0
Anna's Hummingbird	r	12	9	17	5	9	9	6	14
Costa's Hummingbird	s	0	1	0	0	0	0	0	0
Belted Kingfisher	m	1	0	0	0	0	0	0	0
Acorn Woodpecker	r	0	0	0	0	1	0	0	0
Nuttall's Woodpecker	r	12	8	9	8	13	16	8	9
Downy Woodpecker	r	10	3	4	4	9	4	1	8
Hairy Woodpecker	r	6	2	1	4	4	3	2	4
Northern Flicker	r	0	0	0	0	0	0	0	3
Willow Flycatcher	s	0	2	0	0	1	0	0	0
Pacific Slope Flycatcher	s	0	1	0	0	0	1	0	0
Black Phoebe	r	1	9	8	6	5	14	9	21
Ash-throated Flycatcher	s	12	13	10	13	19	11	16	21
Western Kingbird	s	1	0	1	6	0	2	0	8
Bell's Vireo	s	0	2	5	4	3	4	4	1
Warbling Vireo	m	1	1	3	0	0	0	0	0
Western Scrub Jay	r	6	2	10	4	5	10	1	2
American Crow	r	4	8	9	5	6	4	26	7
Common Raven	r	33	18	6	16	36	36	41	27
Tree Swallow	s	8	2	2	11	2	7	4	1
Violet-green Swallow	s	9	1	1	1	1	0	0	0
N. Rough-winged Swallow	s	8	12	36	29	62	25	25	26
Cliff Swallow	s	9	17	4	6	32	246	70	30
Barn Swallow	s	3	11	1	0	5	2	9	5
Oak Titmouse	r	1	4	8	3	8	16	4	5
Bushtit	r	20	10	9	5	34	27	55	38

Table 1 (Cont.). BIRDS OF THE SANTA CLARA RIVER BASIN, 2006: Santa Clara River from

The Old Road downstream to the mouth of Castaic Creek.

Endangered Species and Species of Concern in Bold

SPECIES	STAT.	Dates of Surveys							
		4/20	5/5	5/17	5/27	6/8	6/23	7/2	7/12
White-br. Nuthatch	r	0	0	1	0	0	0	0	0
Bewick's Wren	r	96	46	94	25	74	47	24	44
House Wren	r	26	43	29	18	32	22	0	0
Blue-gr. Gnatcatcher	w,m	3	0	0	0	0	0	0	0
Western Bluebird	r	10	0	6	2	8	10	2	33
Wrentit	r	1	0	6	2	0	13	2	6
Northern Mockingbird	r	4	0	0	0	3	1	0	0
California Thrasher	r	1	0	1	2	3	6	4	5
Cedar Waxwing	w,m	4	2	2	0	0	0	0	0
European Starling	r	21	26	21	9	2	24	10	15
Phainopepla	r	0	0	1	4	3	7	0	3
Orange-cr. Warbler	m	1	1	0	0	0	0	0	0
Nashville Warbler	m	2	0	0	0	0	0	0	0
Yellow Warbler	s,m	15	43	21	7	16	5	7	5
Yellow-rumped Warbler	w,m	21	6	0	0	0	0	0	0
Black-th. Gray Warbler	m	2	1	0	0	0	0	0	0
Common Yellowthroat	r	20	32	15	13	59	83	86	39
Wilson's Warbler	m	9	0	0	0	0	0	0	0
Yellow-breasted Chat	s	1	0	0	1	0	0	0	0
Western Tanager	m	0	15	1	1	0	0	0	0
Spotted Towhee	r	25	29	20	17	51	36	28	34
California Towhee	r	24	17	31	15	25	11	22	54
Song Sparrow	r	80	60	102	36	106	96	56	64
Black-headed Grosbeak	s	13	15	19	10	21	12	21	7
Rose-br. Grosbeak	m	0	0	1	0	0	0	0	0
Blue Grosbeak	s	0	0	1	0	0	0	0	8
Lazuli Bunting	s	0	0	0	0	0	0	0	21
Red-winged Blackbird	s	15	3	37	40	7	3	3	0
Tri-colored Blackbird	m	0	1	0	0	0	0	0	0
Brewer's Blackbird	r	0	0	0	7	0	0	6	0
Brown-headed Cowbird	s	7	15	8	11	11	4	2	18
Hooded Oriole	s	0	0	0	2	3	3	5	1
Bullock's Oriole	s	4	1	3	1	7	6	8	6
House Finch	r	14	20	33	20	80	50	22	115
Lesser Goldfinch	r	19	26	5	5	34	19	17	9
Lawrence's Goldfinch	r	0	2	0	0	0	0	0	0
American Goldfinch	m	0	2	2	0	2	0	2	0
Status: m, migrant; r, resident; s, summer only; w, winter numbers in parentheses are nestlings.									

Table 2. BIRDS OF THE SANTA CLARA RIVER BASIN, 2006: Santa Clara River from McBean Highway to The Old Road.									
Endangered Species and Species of Concern in Bold									
SPECIES	STAT.	Dates of Surveys							
		4/20	5/5	5/17	5/27	6/8	6/23	7/2	7/12
Great Egret	m,w	1	0	0	0	0	0	0	0
Black-crowned Night-heron	m,w	0	0	0	0	0	0	1	0
Mallard	r	3	5	0	0	3	9	6	2
White-tailed Kite	r	1	1	0	0	1	0	3	1
Red-shouldered Hawk	r	1	1	0	0	0	0	1	1
Red-tailed Hawk	r	2	2	1	2	0	3	2	2
American Kestrel	r	1	0	1	2	1	1	0	0
California Quail	r	10	6	20	4	4	6	2	7
Killdeer	r	10	14	10	10	12	19	8	6
Spotted Sandpiper	s	0	1	0	0	0	0	0	0
Mourning Dove	r	3	10	1	6	4	6	3	10
Greater Roadrunner	r	0	1	0	0	0	0	0	0
White-th. Swift	r	15	8	8	6	6	6	8	3
Anna's Hummingbird	r	0	0	1	1	1	2	2	1
Belted Kingfisher	m	1	0	0	0	0	0	0	0
Nuttall's Woodpecker	r	5	1	0	2	7	5	5	8
Downy Woodpecker	r	1	1	0	0	0	0	1	2
Hairy Woodpecker	r	1	0	0	0	0	0	0	0
Olive-sided Flycatcher	m	0	1	0	0	0	0	0	0
Black Phoebe	r	2	3	3	0	3	6	9	12
Ash-throated Flycatcher	s	3	1	4	9	2	4	2	2
Western Kingbird	s	0	0	3	0	0	1	0	2
Western Scrub Jay	r	2	5	7	3	4	5	1	4
American Crow	r	1	0	0	0	0	3	1	3
Common Raven	r	4	4	4	6	4	1	1	0
Tree Swallow	s	0	0	0	2	0	0	0	2
N. Rough-winged Swallow	s	35	13	4	4	2	3	2	0
Cliff Swallow	s	0	40	40	10	22	55	21	11
Barn Swallow	s	2	0	0	0	0	0	0	1
Oak Titmouse	r	1	2	0	4	0	0	2	0
Bushtit	r	7	0	6	0	0	10	0	0
Bewick's Wren	r	24	12	22	8	10	10	8	9
House Wren	r	2	6	3	8	2	0	0	0
Western Bluebird	r	0	0	0	0	0	1	12	0
American Robin	r	0	3	0	0	0	0	0	0
Wrentit	r	1	1	0	0	1	1	0	0
Northern Mockingbird	r	0	2	0	0	3	0	1	0
California Thrasher	r	2	0	2	1	2	0	2	3
Cedar Waxwing	w,m	0	30	0	0	0	0	0	0
European Starling	r	6	9	4	6	3	11	4	13
Phainopepla	r	3	1	3	8	2	10	8	14
Yellow Warbler	s,m	1	0	5	2	0	0	0	0
Yellow-rumped Warbler	w,m	1	0	0	0	0	0	0	0
Common Yellowthroat	r	3	7	4	6	14	8	6	6
Yellow-breasted Chat	s	0	1	0	0	0	0	0	0

Table 2 (cont.). BIRDS OF THE SANTA CLARA RIVER BASIN, 2006: Santa Clara River from McBean Highway to The Old Road.

Endangered Species and Species of Concern in Bold									
SPECIES	STAT.	4/20	5/5	Dates of Surveys					
				5/17	5/27	6/8	6/23	7/2	7/12
Spotted Towhee	r	3	6	9	5	9	8	6	4
California Towhee	r	6	2	4	2	2	12	4	8
Song Sparrow	r	36	20	40	20	36	16	16	10
Black-headed Grosbeak	s	1	9	20	7	7	7	2	5
Blue Grosbeak	s	0	1	0	1	0	0	0	0
Red-winged Blackbird	s	0	1	0	0	2	0	0	0
Brown-headed Cowbird	s	1	5	0	4	3	0	2	2
Bullock's Oriole	s	0	2	1	0	0	1	1	1
House Finch	r	23	8	12	9	12	20	16	23
Lesser Goldfinch	r	6	0	0	0	0	2	0	0
American Goldfinch	m	12	0	0	0	0	0	0	0
Status: m, migrant; r, resident; s, summer only; w, winter numbers in parentheses are nestlings.									

Table 3. BIRDS OF THE SANTA CLARA RIVER BASIN, 2006: Santa Clara River from Boquet Canyon Bridge to McBean Parkway Bridge									
Endangered Species and Species of Concern in Bold									
SPECIES	STAT.	Dates of Surveys							
		4/20	5/5	5/17	5/27	6/8	6/23	7/2	7/12
Great Blue Heron	m,w	0	1	0	0	0	0	0	0
Canada Goose	r	0	2	0	0	0	0	0	0
Mallard	r	2	1	3	0	0	2	2	1
White-tailed Kite	r	0	0	0	0	0	2	0	0
Cooper's Hawk	r	0	0	1	0	1	0	0	0
Red-shouldered Hawk	r	0	0	0	0	1	0	0	0
Red-tailed Hawk	r	1	0	0	1	1	3	0	1
American Kestrel	r	0	0	0	0	0	1	0	0
California Quail	r	4	8	14	6	2	2	3	0
Killdeer	r	1	2	4	4	4	18	3	17
Mourning Dove	r	4	12	4	5	10	3	2	2
Lesser Nighthawk	s	0	0	0	1	0	0	0	0
Bl.ch. Hummingbird	s	0	0	0	2	0	0	0	0
Anna's Hummingbird	r	1	0	2	2	2	2	1	5
Nuttall's Woodpecker	r	3	0	2	2	1	1	4	2
Pacific Slope Flycatcher	s	0	1	0	0	0	0	0	0
Black Phoebe	r	4	1	4	5	5	6	6	1
Say's Phoebe	r	0	0	0	2	0	0	0	0
Ash-throated Flycatcher	s	1	0	2	2	2	2	1	1
Western Kingbird	s	0	0	2	0	0	0	0	0
Western Scrub Jay	r	0	0	1	3	5	2	2	2
American Crow	r	0	0	5	0	2	0	22	1
Common Raven	r	10	28	28	30	20	6	4	4
N. Rough-winged Swallow	s	0	0	1	2	2	4	4	8
Cliff Swallow	s	0	0	20	8	31	2	34	62
Barn Swallow	s	0	0	0	0	1	0	0	0
Oak Titmouse	r	0	2	0	0	0	0	0	0
Bewick's Wren	r	10	18	24	8	8	10	6	6
Northern Mockingbird	r	2	1	0	1	3	4	3	0
California Thrasher	r	1	0	1	0	0	0	0	0
European Starling	r	0	0	0	0	0	3	0	0
Phainopepla	r	0	0	0	0	0	2	0	0
Orange-cr. Warbler	m	0	0	1	0	0	0	0	0
Yellow Warbler	s,m	0	4	2	0	0	0	0	0
Yellow-rumped Warbler	w,m	5	0	0	0	0	0	0	0
Common Yellowthroat	r	1	2	3	0	1	0	1	1
Western Tanager	m	0	5	0	0	0	0	0	0
Spotted Towhee	r	3	1	3	2	3	4	4	5
California Towhee	r	3	6	4	8	4	4	2	6
Song Sparrow	r	20	12	24	16	8	14	12	4
Black-headed Grosbeak	s	1	0	2	2	1	1	3	3
Red-winged Blackbird	s	0	0	0	0	1	5	1	0
Tri-colored Blackbird	?	0	0	0	0	0	3	0	0
Great-tailed Grackle	r	0	0	0	0	1	0	0	0
Brown-headed Cowbird	s	0	0	1	2	0	4	0	0

Table 3 (Cont.). BIRDS OF THE SANTA CLARA RIVER BASIN, 2006: Santa Clara River from Boquet Canyon Bridge to McBean Parkway Bridge

Endangered Species and Species of Concern in Bold									
SPECIES	STAT.	Dates of Surveys							
		4/20	5/5	5/17	5/27	6/8	6/23	7/2	7/12
Bullock's Oriole	s	0	1	0	1	0	0	1	2
House Finch	r	13	11	24	6	24	15	9	25
Lesser Goldfinch	r	2	2	3	2	0	4	0	2
American Goldfinch	w,m	0	6	0	0	0	0	0	0
Status: m, migrant; r, resident; s, summer only; w, winter									
numbers in parentheses are nestlings.									

Table 4. BIRD SURVEYS OF THE SANTA CLARA RIVER BASIN, 2006: Santa Clara River
from Boquet Canyon Bridge upstream for 2.5 miles

Endangered Species and Species of Concern in Bold

SPECIES	STAT.	Dates of Surveys					
		5/19	6/27	6/15	6/25	7/4	7/14
Mallard	r	5	0	0	0	0	0
White-tailed Kite	r	6	7	2	3	2	1
Cooper's Hawk	r	1	0	0	0	0	0
Red-shouldered Hawk	r	0	0	1	0	0	0
Red-tailed Hawk	r	1	0	0	0	1	1
American Kestrel	r	0	1	1	2	0	0
California Quail	r	16	14	8	76	60	35
Killdeer	r	14	6	8	4	13	6(3)
Rock Dove	r	9	27	0	0	0	3
Mourning Dove	r	12	8	14	25	12	22
Greater Roadrunner	r	0	1	0	0	0	0
Black-ch. Hummingbird	s	0	0	0	2	0	2
Anna's Hummingbird	r	2	1	4	5	9	2
Costa's Hummingbird	s	0	0	0	2	0	0
Nuttall's Woodpecker	r	1	0	0	6	8	5
Hairy Woodpecker	r	0	0	0	1	0	3
Northern Flicker	r	0	0	2	1	0	0
Black Phoebe	r	1	2	1	0	1	5
Say's Phoebe	r	0	0	1	0	0	0
Ash-throated Flycatcher	s	0	1	3	2	2	2
Cassin's Kingbird	s	0	0	0	1	0	0
Western Kingbird	s	0	0	4	2	4	0
Western Scrub Jay	r	5	4	6	11	5	3
American Crow	r	2	4	0	0	23	3
Common Raven	r	2	7	11	7	15	7
N. Rough-winged Swallow	s	0	2	2	5	1	1
Cliff Swallow	s	0	0	3	7	24	12
Barn Swallow	s	0	0	0	0	0	3
Oak Titmouse	r	1	0	0	0	2	1
Bushtit	r	2	0	0	5	0	10
Bewick's Wren	r	16	14	10	23	30	7
House Wren	r	6	1	0	0	0	0
Wrentit	r	1	0	0	9	9	2
Northern Mockingbird	r	6	8	14	19	14	7
California Thrasher	r	0	1	0	3	1	0
European Starling	r	0	0	0	10	2	4
Phainopepla	r	6	6	4	10	8	3
Common Yellowthroat	r	1	0	4	2	8	1
Spotted Towhee	r	7	2	7	17	10	2
California Towhee	r	12	6	6	18	15	6
Song Sparrow	r	12	8	5	4	4	2
Rose-br. Grosbeak	s	0	0	0	1	0	0
Black-headed Grosbeak	s	0	0	1	1	2	0
Blue Grosbeak	s	0	0	0	0	1	1

Table 4 (Cont.). BIRD SURVEYS OF THE SANTA CLARA RIVER BASIN, 2006: Santa Clara River from Boquet Canyon Bridge upstream for 2.5 miles

Endangered Species and Species of Concern in Bold

Dates of Surveys

SPECIES	STAT.	5/19	2/27	6/15	6/25	7/4	7/14
Lazuli Bunting	s	0	0	0	0	9	0
Red-winged Blackbird	s	28	8	16	0	2	2
Western Meadowlark	r	0	0	0	1	0	0
Brown-headed Cowbird	s	3	4	3	2	0	1
Hooded Oriole	s	0	0	0	0	2	0
Bullock's Oriole	s	0	0	1	2	4	0
House Finch	r	26	21	13	29	50	60
Lesser Goldfinch	r	0	0	0	2	4	3

Status: m, migrant, r, resident, s, summer only, w, winter
numbers in parentheses are nestlings.

Table 5. BIRDS OF THE SANTA CLARA RIVER BASIN, 2006: Castaic Creek from I-5 to the Santa Clara River

Endangered Species and Species of Concern in Bold									
SPECIES	STAT.	Dates of Surveys							
		4/16	5/2	5/15	5/25	6/6	6/21	6/30	7/10
Great Blue Heron	m,w	1	0	0	0	1	2	1	1
Great Egret	m,w	1	0	0	0	0	0	0	1
Green Heron	r	1	1	0	0	0	0	0	0
Mallard	r	4	3	2	6	3	4	5	0
White-tailed Kite	r	2	2	1	2	2	0	1	2
Cooper's Hawk	r	1	1	1	1	1	1	2	0
Red-shouldered Hawk	r	2	1	0	1	1	3	1	5
Red-tailed Hawk	r	1	1	1	1	0	1	2	4
American Kestrel	r	0	0	0	0	0	0	1	1
California Quail	r	18	21	14	26	9	88	43	13
Killdeer	r	6	4	13	14	9	12	3	0
Spotted Sandpiper	s	0	2	0	1	0	0	0	0
Rock Dove	r	15	0	0	0	17	35	0	0
Mourning Dove	r	26	10	22	20	10	18	6	13
Greater Roadrunner	r	1	0	0	0	0	0	0	0
Barn Owl	r	0	0	0	4	0	0	0	0
Black-ch. Hummingbird	s	0	0	0	0	0	1	0	3
Anna's Hummingbird	r	7	9	16	9	11	10	6	19
Costa's Hummingbird	s	0	0	0	0	0	1	0	1
Belted Kingfisher	m	1	0	0	0	0	0	0	0
Nuttall's Woodpecker	r	3	12	9	6	10	13	5	7
Downy Woodpecker	r	0	5	3	0	2	8	2	5
Hairy Woodpecker	r	0	0	0	0	2	2	1	1
Northern Flicker	r	3	2	0	3	2	3	2	0
Pacific Slope Flycatcher	s	2	0	0	0	0	0	1	0
Black Phoebe	r	6	6	3	4	2	8	1	5
Ash-throated Flycatcher	s	2	4	7	10	13	7	4	6
Western Kingbird	s	0	0	0	2	0	6	0	0
Horned Lark	r	0	0	0	2	6	0	0	0
Bell's Vireo	s	0	0	3	0	0	1	1	1
Warbling Vireo	m	0	0	1	1	0	0	0	0
Western Scrub Jay	r	8	8	9	5	8	7	5	5
American Crow	r	1	10	11	4	4	0	2	44
Common Raven	r	10	22	1	6	18	2	9	9
Tree Swallow	s	0	4	4	4	7	3	0	0
Violet-green Swallow	s	20	1	2	0	2	0	0	0
N. Rough-winged Swallow	s	44	10	74	26	7	10	16	6
Cliff Swallow	s	102	65	50	255	310	200	220	29
Barn Swallow	s	2	0	0	0	0	0	0	2
Oak Titmouse	r	0	23	7	5	9	16	3	3
Bushtit	r	15	25	16	7	16	53	9	8
Bewick's Wren	r	43	53	54	15	39	21	30	37
House Wren	r	22	4	12	0	11	0	0	0
Blue-gr. Gnatcatcher	w,m	3	0	0	0	0	0	0	0
Western Bluebird	r	3	2	2	4	4	1	0	1

Table 5 (Cont.). BIRDS OF THE SANTA CLARA RIVER BASIN, 2006: Castaic Creek from I-5 to the Santa Clara River									
1	2	3	4	5	6	7	8	9	10

Endangered Species and Species of Concern in Bold									
SPECIES	STAT.	Dates of Surveys							
		4/16	5/2	5/15	5/25	6/6	6/21	6/30	7/10
Swainson's Thrush	m	0	2	1	0	0	0	0	0
Wrentit	r	3	2	1	0	2	3	5	4
Northern Mockingbird	r	2	2	1	2	0	3	0	0
California Thrasher	r	2	1	6	2	3	7	4	3
American Pipit	m	1	0	0	0	0	0	0	0
European Starling	r	12	8	11	9	5	13	6	25
Phainopepla	r	0	0	2	0	0	3	0	1
Orange-cr. Warbler	m	4	7	1	0	0	0	0	0
Yellow Warbler	s,m	5	12	10	8	8	7	0	0
Yellow-rumped Warbler	w,m	42	2	0	0	0	0	0	0
Townsend's Warbler	m	0	2	0	0	0	0	0	0
Common Yellowthroat	r	6	14	15	6	0	6	1	10
Wilson's Warbler	m	9	16	0	0	0	0	0	0
Yellow-breasted Chat	s	1	0	0	1	0	0	0	0
Western Tanager	m	0	0	4	0	0	0	0	0
Spotted Towhee	r	24	32	27	21	39	44	9	17
California Towhee	r	38	28	32	18	40	21	35	23
Rufous-cr. Sparrow	r	0	2	0	0	0	0	0	0
Song Sparrow	r	48	20	27	18	16	34	24	7
White-crowned Sparrow	w,m	12	0	0	0	0	0	0	0
Black-headed Grosbeak	s	15	7	11	10	9	11	2	5
Blue Grosbeak	s	0	0	1	0	0	0	0	2
Red-winged Blackbird	s	4	6	18	5	2	1	0	10
Tri-colored Blackbird	m	0	0	0	1	1	0	0	0
Yellow-h. Blackbird	m	1	0	0	0	0	0	0	0
Brewer's Blackbird	r	0	0	0	3	0	0	0	0
Brown-headed Cowbird	s	11	2	6	6	1	3	0	10
Hooded Oriole	s	1	1	0	0	1	1	0	0
Bullock's Oriole	s	0	3	0	1	3	3	1	1
House Finch	r	14	22	18	15	34	100	30	37
Lesser Goldfinch	r	9	29	14	9	10	15	7	3
American Goldfinch	m	0	15	2	3	0	3	0	0
House Sparrow	r	5	6	10	3	0	0	0	0
Status: m, migrant; r, resident; s, summer only; w, winter numbers in parentheses are nestlings.									

Table 6. BIRDS OF THE SANTA CLARA RIVER BASIN, 2006: San Franciscquito Creek from Santa Clara River to Copper Hill Drive.

Endangered Species and Species of Concern in bold							
SPECIES	STAT.	Dates of Surveys					
		5/18	5/28	6/14	6/24	7/3	7/13
Green Heron	r	3	0	0	0	0	0
Black-crowned Night-heron	m,w	0	1	0	0	0	0
Mallard	r	2	0	0	1	1	0
White-tailed Kite	r	0	0	0	0	1	0
Cooper's Hawk	r	1	0	0	0	0	0
Red-shouldered Hawk	r	0	0	1	0	0	0
Red-tailed Hawk	r	2	4	3	1	1	3
American Kestrel	r	0	2	1	1	0	2
California Quail	r	34	36	20	6	9	6
Killdeer	r	8	6	2	2	1	0
Rock Dove	r	8	0	4	15	0	0
Mourning Dove	r	40	26	25	25	16	16
Barn Owl	r	0	1	3	0	1	0
Anna's Hummingbird	r	0	2	3	6	7	6
Nuttall's Woodpecker	r	2	3	3	6	8	2
Willow Flycatcher	s	0	1	0	0	0	0
Black Phoebe	r	6	1	2	4	7	3
Say's Phoebe	r	2	2	1	3	3	0
Ash-throated Flycatcher	s	3	1	1	2	2	3
Cassin's Kingbird	s	0	2	0	0	0	2
Western Kingbird	s	2	0	1	0	0	0
Western Scrub Jay	r	3	1	5	5	6	3
American Crow	r	0	2	0	0	0	2
Common Raven	r	26	3	4	6	3	4
Tree Swallow	s	0	4	0	0	0	0
N. Rough-winged Swallow	s	4	4	2	5	14	0
Cliff Swallow	s	4	16	5	4	12	2
Barn Swallow	s	0	0	1	0	0	0
Oak Titmouse	r	4	4	1	2	2	0
Bushtit	r	0	4	4	3	0	6
Bewick's Wren	r	26	30	18	14	14	12
House Wren	r	0	0	2	0	0	0
Western Bluebird	r	2	4	0	0	0	0
American Robin	r	2	0	0	0	0	0
Northern Mockingbird	r	6	6	10	8	4	4
California Thrasher	r	1	0	0	1	0	0
European Starling	r	7	10	6	4	0	2
Phainopepla	r	4	10	10	8	10	4
Orange-cr. Warbler	m	0	2	0	0	0	0
Yellow Warbler	s,m	0	1	0	0	0	0
Common Yellowthroat	r	1	3	1	0	1	2
Spotted Towhee	r	7	6	9	6	8	9
California Towhee	r	5	7	7	10	10	6
Song Sparrow	r	20	28	7	4	3	3
Black-headed Grosbeak	s	2	2	2	1	2	1

Table 6 (Cont.). BIRDS OF THE SANTA CLARA RIVER BASIN, 2006: San Franciscquito Creek from Santa Clara River to Copper Hill Drive.

Endangered Species and Species of Concern in bold

SPECIES	STAT.	Dates of Surveys					
		5/18	5/28	6/14	6/24	7/3	7/13
Red-winged Blackbird	s	4	20	4	4	1	0
Brewer's Blackbird	r	0	0	2	0	0	0
Great-tailed Grackle	r	2	0	0	0	0	0
Bullock's Oriole	s	1	6	2	1	9	0
House Finch	r	46	36	56	37	50	32
Lesser Goldfinch	r	8	2	0	4	5	4
Status: m, migrant; r, resident; s, summer only; w, winter							
numbers in parentheses are nestlings.							

Table 7. BIRDS OF THE SANTA CLARA RIVER BASIN, 2006: South Fork from Rte 126 downstream to Santa Clara River.

Endangered Species and Species of Concern Shaded

SPECIES	STAT.	Dates of Surveys					
		5/18	5/28	6/14	6/24	7/3	7/13
Mallard	r	10	4(5)	0	0	0	0
Red-shouldered Hawk	r	1	0	0	0	0	1
Red-tailed Hawk	r	1	1	1	0	2	0
American Kestrel	r	1	0	0	0	0	0
California Quail	r	17	23	8	25	2	25
Killdeer	r	0	5	1	1	1	2
Mourning Dove	r	23	38	4	17	3	8
Greater Roadrunner	r	0	0	0	1	0	1
Black-ch. Hummingbird	s	0	0	0	0	2	0
Anna's Hummingbird	r	3	6	1	5	1	2
Costa's Hummingbird	s	0	0	0	1	0	0
Allen's Hummingbird	r	0	1	0	0	0	0
Nuttall's Woodpecker	r	2	0	0	2	1	2
Downy Woodpecker	r	0	0	0	1	0	2
Hairy Woodpecker	r	0	0	0	1	0	0
Black Phoebe	r	0	0	1	2	0	5
Say's Phoebe	r	0	0	0	0	0	1
Ash-throated Flycatcher	s	2	3	2	0	0	0
Western Kingbird	s	0	2	0	3	2	0
Western Scrub Jay	r	1	2	5	3	2	4
American Crow	r	3	1	0	0	0	0
Common Raven	r	6	12	18	15	4	4
N. Rough-winged Swallow	s	4	19	34	25	15	5
Cliff Swallow	s	0	10	14	10	0	13
Barn Swallow	s	0	0	0	4	2	0
Oak Titmouse	r	0	0	0	3	0	1
Bushtit	r	8	8	0	0	2	0
Bewick's Wren	r	21	16	7	20	5	7
House Wren	r	0	6	0	0	0	0
Wrentit	r	4	2	3	0	0	0
Northern Mockingbird	r	2	8	4	7	3	8
California Thrasher	r	0	1	1	2	1	2
European Starling	r	21	16	5	4	2	6
Phainopepla	r	6	13	2	3	2	0
Yellow Warbler	s,m	0	3	0	0	0	0
Common Yellowthroat	r	0	1	0	0	0	0
Spotted Towhee	r	4	7	0	5	5	5
California Towhee	r	8	11	0	6	5	5
Song Sparrow	r	2	9	0	0	0	0
Black-headed Grosbeak	s	0	2	2	0	2	0
Red-winged Blackbird	s	0	2	6	0	0	7
Brewer's Blackbird	r	0	8	0	0	0	0
Great-tailed Grackle	r	3	0	0	0	0	0
Brown-headed Cowbird	s	4	0	0	0	0	0

Table 7 (cont.), BIRDS OF THE SANTA CLARA RIVER BASIN, 2006: South Fork from Rte 126 downstream to Santa Clara River.

Endangered Species and Species of Concern Shaded							
SPECIES	STAT.	Dates of Surveys					
		5/18	5/28	6/14	6/24	7/3	7/13
Hooded Oriole	s	0	2	0	0	0	0
Bullock's Oriole	s	0	4	1	1	1	0
House Finch	r	31	32	49	53	35	34
Lesser Goldfinch	r	6	22	7	4	9	4
House Sparrow	r	0	4	3	0	3	4

Status: m, migrant; r, resident; s, summer only; w, winter
 numbers in parentheses are nestlings.

Table 8. BIRDS OF THE SANTA CLARA RIVER BASIN, 2006: South Fork of the Santa Clara River from Route 126 upstream to Coyote Creek.

Endangered Species and Species of Concern in bold							
SPECIES	STAT.	Dates of Surveys					
		5/18	5/28	6/14	6/24	7/3	7/13
Mallard	r	0	2	0	0	0	0
Cooper's Hawk	r	0	0	0	1	0	0
Red-tailed Hawk	r	0	0	0	0	1	1
American Kestrel	r	0	0	0	1	1	0
California Quail	r	11	14	2	36	10	12
Killdeer	r	3	0	3	1	0	0
Rock Dove	r	0	0	8	0	0	0
Mourning Dove	r	12	15	3	9	14	12
Greater Roadrunner	r	0	0	2	0	0	0
White-th. Swift	r	0	0	1	3	0	0
Black-ch. Hummingbird	s	0	0	0	0	4	2
Anna's Hummingbird	r	19	8	10	9	10	7
Nuttall's Woodpecker	r	3	2	1	4	4	4
Downy Woodpecker	r	0	0	0	0	0	2
Black Phoebe	r	0	10	8	3	2	7
Ash-throated Flycatcher	s	2	3	0	1	0	0
Cassin's Kingbird	s	0	0	0	0	3	2
Western Kingbird	s	2	4	4	6	5	8
Western Scrub Jay	r	6	5	6	5	4	5
American Crow	r	5	1	7	2	8	9
Common Raven	r	11	7	3	6	5	34
N. Rough-winged Swallow	s	4	7	3	0	2	1
Cliff Swallow	s	0	0	2	2	0	0
Oak Titmouse	r	0	0	0	2	0	7
Bushtit	r	13	15	18	10	28	17
Bewick's Wren	r	26	18	18	26	4	9
House Wren	r	4	2	6	1	0	0
Wrentit	r	2	2	5	3	0	4
Northern Mockingbird	r	2	5	12	3	6	5
California Thrasher	r	7	2	6	9	3	2
European Starling	r	11	2	9	3	3	9
Phainopepla	r	3	0	3	0	0	0
Orange-cr. Warbler	m	2	0	0	0	0	0
Yellow Warbler	s,m	4	2	0	0	0	0
Common Yellowthroat	r	1	0	2	0	0	0
Western Tanager	m	8	0	0	0	0	0
Spotted Towhee	r	20	24	24	18	17	11
California Towhee	r	18	15	11	14	14	15
Song Sparrow	r	24	13	15	7	1	0
Black-headed Grosbeak	s	6	8	4	1	5	8
Blue Grosbeak	s	0	0	1	0	0	0
Western Meadowlark	r	6	0	0	0	0	0
Brown-headed Cowbird	s	9	0	0	0	2	0
Hooded Oriole	s	1	2	1	1	0	0

Table 8 (cont.). BIRDS OF THE SANTA CLARA RIVER BASIN, 2006: South Fork of the Santa Clara River from Route 126 upstream to Coyote Creek.

Endangered Species and Species of Concern in bold							
SPECIES	STAT.	Dates of Surveys					
		5/18	5/28	6/14	6/24	7/3	7/13
Bullock's Oriole	s	1	2	5	3	3	0
House Finch	r	33	31	67	32	42	89
Lesser Goldfinch	r	20	4	11	0	5	8
House Sparrow	r	0	6	13	3	33	18
Status: m, migrant; r, resident; s, summer only; w, winter numbers in parentheses are nestlings.							

Willow Flycatcher Survey and Detection Form (rev. 4/98) 2006

Site Name San Francisquito Creek Urban Site No

Was site surveyed in previous year? **Yes** No

Drainage Santa Clara River

If yes, what site name was used? same as above

County Los Angeles State CA USGS Quad Name Newhall

Is copy of USGS map marked with survey area and WIFL sightings attached (as required)? ☒ Yes ☐ No

Site Coordinates: Start: N 34 25/631 W 118 33.899 UTM

Stop: N 34 27.752 W 118 33.047 UTM Zone

Elevation 1125-1300 ft. feet / meters (circle one)

** Fill in additional site information on back of this page **

Survey # Observer(s)	Date (m/d/y) Survey time	Number of WIFLs Found	Estimated Number of Pairs	Estimated Number of Territories	Nest(s) Found? Y or N	Cowbirds Detected? Y or N	Presence of Livestock, Recent sign Y or N	Comments about this survey (e.g., evidence of pairs or breeding, number of nests, nest contents or number of fledges seen, potential threats)
D. Guthrie	Date 5/18 start 6:00 stop 8:00 total hrs 2.0	0	0	0	n	n	n	
D. Guthrie	Date 5/28 Start 6:00 Stop 8:00 total hrs 2	1	0	0	n	n	N	Non singing
D. Guthrie	Date 6/14 0 = Start 6:00 Stop 8:00 total hrs 2.0	0	0	0	n	n	N	
D. Guthrie	Date 6/24 start 5:30 stop 7:30 total hrs 2.0	0	0	0	n	n	N	
D. Guthrie	Date 7/3 start 5:30 stop 7:30 total hrs 2.0	0	0	0	N	N	N	
D. Guthrie	Date 7/13 Start 5:30 Stop 7:30 Total hrs 2.0	0	0	0	n	n	n	
Overall Site Summary (Total only resident WIFLs)		Adults 0	Pairs 0	Territories 0	Nests 0	Were any WIFLs color-banded? No If yes, report color combination(s) in the comments section on back of form		
Total survey hrs 12.0								

Name of Reporting Individual Dan Guthrie Date Report Completed 7/20/06

Submit the original of this form. Retain a copy for your records.

Fill in the following information completely. Submit original form. Retain copy for your records.

Name of Reporting Individual Dan Guthrie Phone # 909 607 2836

Affiliation Claremont Colleges Email dguthrie@jcd.claremont.edu

Site Name San Francisquito Creek

Did you verify that this site name is consistent with that used in previous years? Yes No ? (circle one)

This is a section of site previously lumped as upper Santa Clara River

Management Authority for Survey Area (circle one):

Federal Municipal/County State Tribal Private

Name of Management Entity or Owner (e.g., Tonto National Forest) Newhall Land Co.

Length of area surveyed: 2 miles (specify units, e.g., miles = mi, kilometers = km, meters = m)

Did you survey the same general area during each visit to this site this year? Yes / If no, summarize in comments below.

If site was surveyed last year, did you survey the same general area this year? Yes / If no, summarize in comments below.

Vegetation Characteristics: Overall, are the species in tree/shrub layer at this site comprised predominantly of (check one):

Native broadleaf plants

☒ Mixed native and exotic plants (mostly native)
(entirely or almost entirely, includes high-elevation willow)

☐ Mixed native and exotic plants (mostly exotic) ☐ Exotic/introduced plants (entirely or almost entirely)

Identify the 2-3 predominant tree/shrub species: Cottonwood, willow, tamarisk

Average height of canopy: 40 ft. (specify units)

Was surface water or saturated soil present at or adjacent to site? No water present only for 50 yds in middle of section.

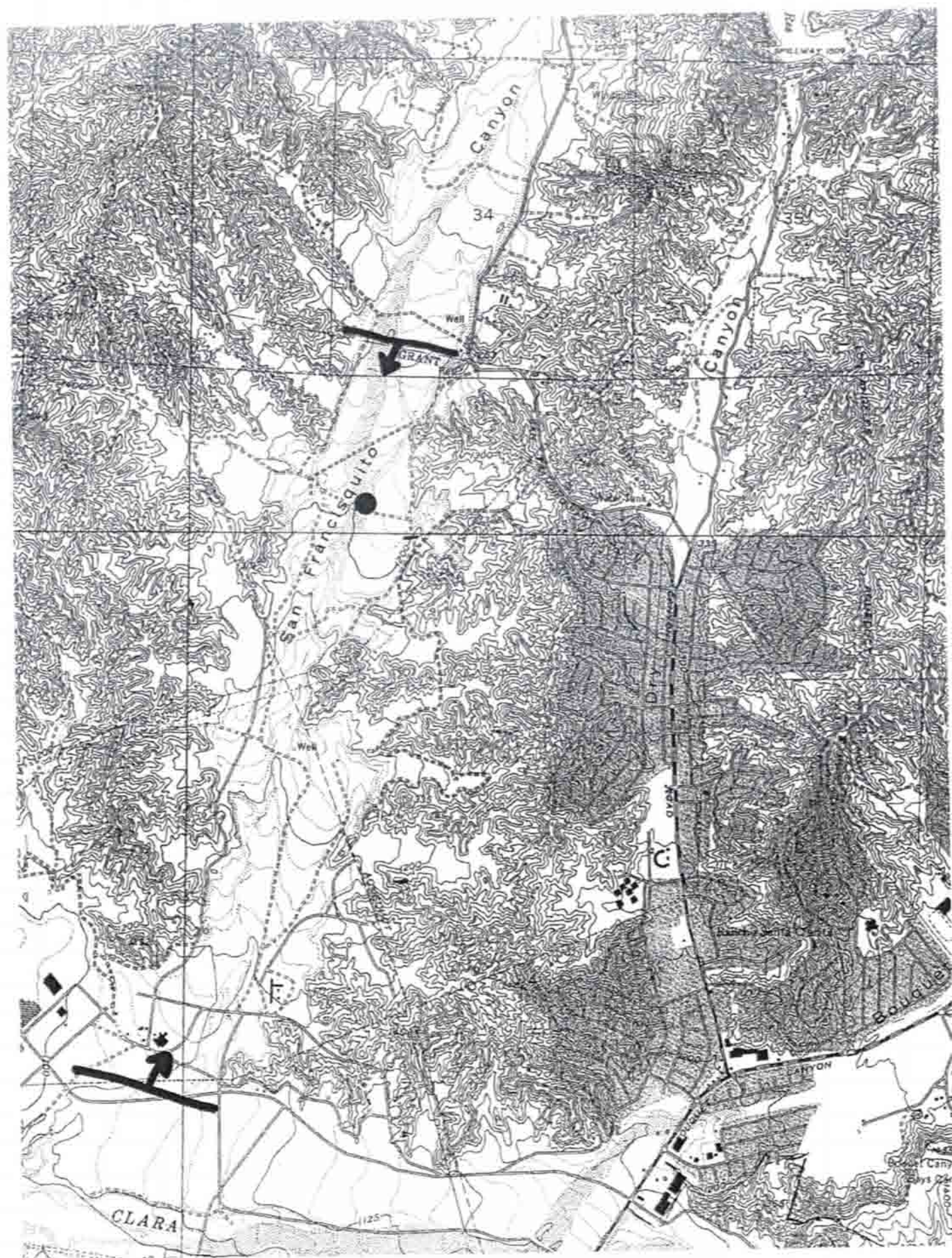
Distance from the site to surface water or saturated soil: (specify units)

Did hydrological conditions change significantly among visits (did the site flood or dry out)? No (circle one)

If yes, describe in comments section below. no water present except for 50 yd section trickle in center of section.

Remember to attach a xerox copy of a USGS quad/topographical map (REQUIRED) of the survey area, noting the survey site and location of WIFL detections. You may also include a sketch or aerial photograph showing details of site location, patch shape, survey route in relation to patch, and location of any willow flycatchers or willow flycatcher nests detected. Such sketches or photographs are welcomed, but DO NOT substitute for the required USGS quad map.

Comments (attach additional sheets if necessary):



Willow Flycatcher Survey and Detection Form (rev. 4/98) 2006

Site Name Santa Clara River above Bouquet Canyon rd. ~~Total Site No~~

Was site surveyed in previous year? **Yes** ☐ **No** ☒

Drainage Santa Clara River

If yes, what site name was used? same as above

County Los Angeles State CA USGS Quad Name Newhall

Is copy of USGS map marked with survey area and WIFL sightings attached (as required)? ☒ **Yes** ☐ **No**

Site Coordinates: Start: N 34 25.415 W 118 32.399 UTM

Stop: N 34 25.515 W 118 30.125 UTM Zone

Elevation 1125-1320 ft. feet / meters (circle one)

**** Fill in additional site information on back of this page ****

Survey # Observer(s)	Date (m/d/y) Survey time	Number of WIFLs Found	Estimated Number of Pairs	Estimated Number of Territories	Nest(s) Found? Y or N	Cowbirds Detected? Y or N	Presence of Livestock, Recent sign Y or N	Comments about this survey (e.g., evidence of pairs or breeding, number of nests, nest contents or number of fledges seen; potential threats)
D Guthrie	Date 5/19 start 6: stop 7:30 total hrs 1.5	0	0	0	N	n	n	
D. Guthrie	Date 5/27 Start 6:00 Stop 7:30 total hrs 1.5	0	0	0	n	n	N	
J. Sugden	Date 6/15 Start 6:00 Stop 7:30 total hrs 1.5	0	0	0	n	n	N	
D. Guthrie J. Sugden	Date 6/25 start 5:30 stop 6:30 total hrs 2.0	0	0	0	n	n	N	
D Guthrie J. sugden	Date 7/4 start 5:30 stop 6:00 total hrs 2.0	0	0	0	N	N	N	
D Guthrie J. Sugden	Date 7/14/06 Start: 8:00 Stop 9:00 Total hrs. 2.0	0	0	0	n	Y	n	
Overall Site Summary (Total only resident WIFLs)		Adults 0	Pairs 0	Territories 0	Nests 0	Were any WIFLs color-banded? No If yes, report color combination(s) in the comments section on back of form		
Total survey hrs 10.5								

Name of Reporting Individual Dan Guthrie Date Report Completed 7/20/06

Submit the original of this form. Retain a copy for your records.

Fill in the following information completely. Submit original form. Retain copy for your records.

Name of Reporting Individual Dan Guthrie Phone # 909 607 2836

Affiliation Claremont Colleges Email dguthrie@jcd.claremont.edu

Site Name Santa Clara River above boquet Canyon Rd.

Did you verify that this site name is consistent with that used in previous years?

This is a section of site previously lumped as upper Santa Clara River, section 4.

Management Authority for Survey Area (circle one):

Federal	Municipal/County	State	Tribal	Private
---------	------------------	-------	--------	---------

Name of Management Entity or Owner (e.g., Tonto National Forest) Newhall Land Co.

Length of area surveyed: 2 miles (specify units, e.g., miles = mi, kilometers = km, meters = m)

Did you survey the same general area during each visit to this site this year? **Yes** / If no, summarize in comments below

If site was surveyed last year, did you survey the same general area this year? Yes / If no, summarize in comments below.

Vegetation Characteristics: Overall, are the species in tree/shrub layer at this site comprised predominantly of (check one):

Native broadleaf plants

XX ☐ Mixed native and exotic plants (mostly native)
(entirely or almost entirely, includes high-elevation willow)

☐ Mixed native and exotic plants (mostly exotic) ☐ Exotic/introduced plants (entirely or almost entirely)

Identify the 2-3 predominant tree/shrub species: Cottonwood, Baccharis, tamarisk

Average height of canopy: 30 ft. if present. (specify units)

Was surface water or saturated soil present at or adjacent to site? No

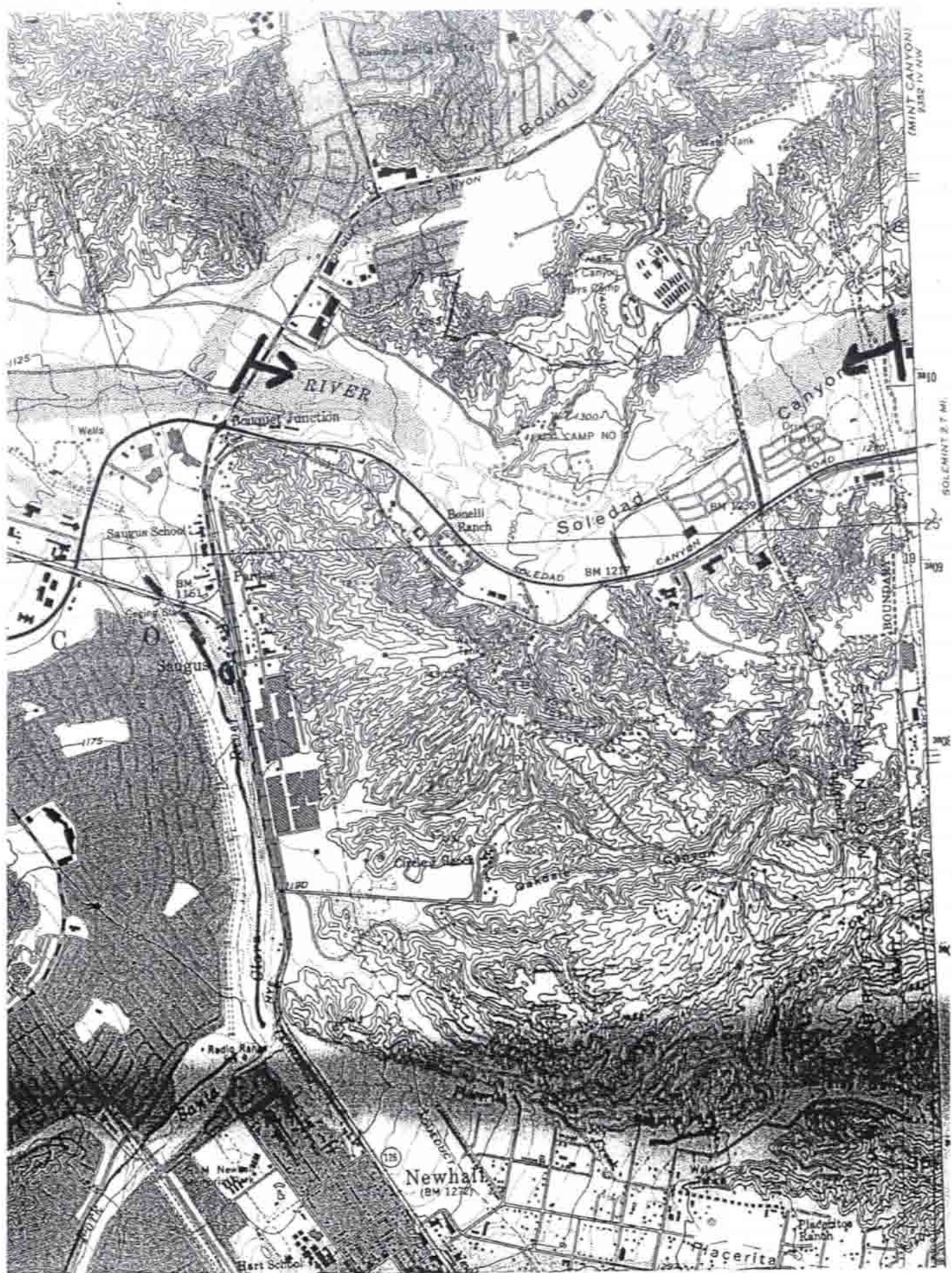
Distance from the site to surface water or saturated soil: water starts at downstream end of section. (specify units)

Did hydrological conditions change significantly among visits (did the site flood or dry out)? No (circle one)

If yes, describe in comments section below. no water present except for 50 yd section trickle in center of section.

Remember to attach a xerox copy of a USGS quad/topographical map (REQUIRED) of the survey area, noting the survey site and location of WIFL detections. You may also include a sketch or aerial photograph showing details of site location, patch shape, survey route in relation to patch, and location of any willow flycatchers or willow flycatcher nests detected. Such sketches or photographs are welcomed, but DO NOT substitute for the required USGS quad map.

Comments (attach additional sheets if necessary):



Willow Flycatcher Survey and Detection Form (rev. 4/98) 2006

Site Name Castaic Creek Total Site No

Was site surveyed in previous year? Yes No Drainage Santa Clara River

If yes, what site name was used? Upper Santa Clara River, section 5

County Los Angeles State CA USGS Quad Name Newhall

Is copy of USGS map marked with survey area and WIFL sightings attached (as required)? ☒ Yes ☐ No

Site Coordinates: Start: N 34 25/306 W 118 36.755 UTM

Stop: N 34 26 W 118 37 UTM Zone

Elevation 950-1027 ft. feet / meters (circle one)

** Fill in additional site information on back of this page **

Survey # Observer(s)	Date (m/d/y) Survey time	Number of WIFLs Found	Estimated Number of Pairs	Estimated Number of Territories	Nest(s) Found? Y or N	Cowbirds Detected? Y or N	Presence of Livestock, Recent sign Y or N	Comments about this survey (e.g., evidence of pairs or breeding, number of nests, nest contents or number of fledges seen; potential threats)
J. Sugden	Date 5/15 start 6:30 stop 8:30 total hrs 2.0	0	0	0	n	Y	n	migrants
J. Sugden	Date 5/25 Start 6:30 Stop 8:30 total hrs 2.0	0	0	0	n	Y	N	
J. Sugden	Date 6/6 Start 6:30 Stop 8:30 total hrs 2.0	0	0	0	n	Y	N	
J. Sugden	Date 6/21 start 6:30 stop 8:30 total hrs 2.0	0	0	0	n	Y	N	
J. Sugden	Date 6/30 start 5:30 stop 7:30 total hrs 2.0	0	0	0	N	Y	N	
J. Sugden	Date 7/10 Start 5:30 Stop 7:30 Total hrs 2	0	0	0	n	y	n	
Overall Site Summary (Total only resident WIFLs)		Adults 0	Pairs 0	Territories 0	Nests 0	Were any WIFLs color-banded? No If yes, report color combination(s) in the comments section on back of form		
Total survey hrs 12.0								

Name of Reporting Individual Dan Guthrie Date Report Completed 7/20/06

Submit the original of this form. Retain a copy for your records.