

# ***IEP NEWSLETTER***

---

VOLUME 28, NUMBER 2, 2015

<b>OF INTEREST TO MANAGERS .....</b>	<b>2</b>
<b>STATUS AND TRENDS .....</b>	<b>3</b>
2014 Status and Trends Report for Pelagic Fishes of the Upper San Francisco Estuary .....	3
Central Valley Chinook Salmon Harvest and Escapement: 1975-2014 .....	12
2013-2014 Yolo Bypass Fisheries Monitoring Status and Trends Report.....	16
Benthic Monitoring, 2014 .....	24
<b>CONTRIBUTED PAPERS .....</b>	<b>30</b>
Estimating Annual Abundance of White Sturgeon 85-116 and $\geq 169$ Centimeters Total Length.....	30

## References

Fields W and Messer C. 1999. "Life on the bottom: Trends in species composition of the IEP-DWR Benthic Monitoring Program." IEP Newsletter 12: 38-41.

# CONTRIBUTED PAPERS

---

## Estimating Annual Abundance of White Sturgeon 85-116 and $\geq$ 169 Centimeters Total Length

Marty Gingras (DFW), [marty.gingras@wildlife.ca.gov](mailto:marty.gingras@wildlife.ca.gov)  
Jason DuBois (DFW), [jason.dubois@wildlife.ca.gov](mailto:jason.dubois@wildlife.ca.gov)

### Introduction

The annual abundance of San Francisco Estuary White Sturgeon less than 102 centimeters total length (cm TL) has not previously been estimated or indexed, because most research focus has been on harvestable fish and for many decades fishing has been prohibited on fish less than 102 centimeters total length. There is now emphasis on making those abundance estimates, because those are needed to simplify forecasts about reasonable expectations for the fishery (e.g., catch per unit effort; acceptable levels of harvest) and to allow a relatively simple assessment of Age-0 White Sturgeon abundance index accuracy. Although the abundance of White Sturgeon  $\geq$  169 cm TL — a demographic that has been protected by fishing regulations in full or part since the early 1990s — has been estimated using mark-recapture methods, precision of the estimates has been poor due to a paucity of marked fish and recaptured fish. To begin addressing these shortcomings, here we provide some abundance estimates for White Sturgeon 85-116 cm TL and  $\geq$  169 cm TL, and describe how we made those

estimates using (1) estimated abundance of a third White Sturgeon demographic, (2) White Sturgeon lengths from catch in experimental trammel nets during the California Department of Fish and Wildlife (CDFW) White Sturgeon population study, and (3) White Sturgeon relative retention curves for those trammel nets.

### Methods and Results

The primary challenge here is use of *catch length frequency distributions* from experimental trammel nets as proxies for *population length frequency distributions*. The issues are selectivity (i.e., one trammel catches fish better than another) and size-dependent availability of fish (i.e., given migratory and other behaviors, are lengths from the catch representative of the population). To begin addressing that challenge, we developed *modeled length frequency distributions* but we accounted only for selectivity.

The CDFW White Sturgeon population study deployed trammel net gangs composed of panels made from 8" stretched-mesh prior to 1990, but thereafter — laying the groundwork for an investigation into selectivity — the study deployed experimental trammel net gangs composed of panels made from 6", 7", and 8" stretched-mesh. Since 1990, the experimental trammel nets have been deployed weekdays in Suisun Bay and San Pablo Bay during either September-October (1990-1991, 1993-1994, 1997-1998, 2005) or August-October (2001-2002, 2006-2014). Length at recruitment to the experimental trammel nets increased with mesh size (Figure 1), which means information on differences in retention rates of the three mesh sizes would help with interpretation and use of the *catch length frequency distributions*.

We used R statistical and graphics software (R Core Team 2014, R version 3.1.1 2014-07-10) for the creation and assessment of relative retention curves (Figure 2) from CDFW White Sturgeon population study catch during 1990-1991, 1993-1994, 1997-1998, 2001-2002, 2005-2013. Models available to us were (1) "norm.loc," which is a normal curve where mean changes with the gear and standard deviation is constant for all gears, (2) "normal.sca," which is a normal curve where mean and standard deviation change with gear, (3) "lognorm," which is a lognormal curve, (4) "binorm.sca," which is the sum of two normals, and (5) "bilognormal," which is the sum of two lognormals.

We used only 2007-2012 length frequency distributions, because that is the longest uninterrupted time series and the findings speak directly to present harvest-management issues. To model 2007-2012 length frequency distributions that should more-closely approximate the *population length frequency distributions*, we used (1) the best-fitted (i.e., smallest model deviance) and most-plausible of the relative retention curves (Bi-Lognormal), and (2) 2007-2012 annual catch by the CDFW White Sturgeon population study.

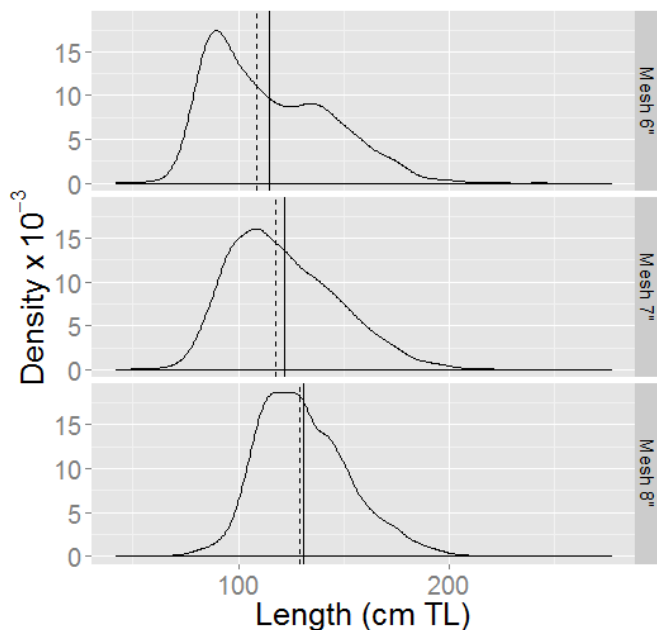
As expected from relative retention curve shapes, the *modeled length frequency distributions* include a greater fraction of small fish than the corresponding *catch length frequency distributions* (Figure 3). Though not shown here, the *modeled length frequency distributions* also include many implausibly large variations below about 85 cm TL.

We estimated annual abundance of fish 85-116 cm TL and  $\geq 169$  cm TL (Figure 4) by using (1) estimates of 117-168 cm TL White Sturgeon abundance (as in DuBois and Gingras 2011) from reported harvest and estimated harvest rate (CDFW’s “conventional algorithm”) (Gingras and DuBois 2014) and (2) the *modeled length frequency distributions*. We constrained the abundance estimates to a minimum of 85 cm TL, because we believe variations

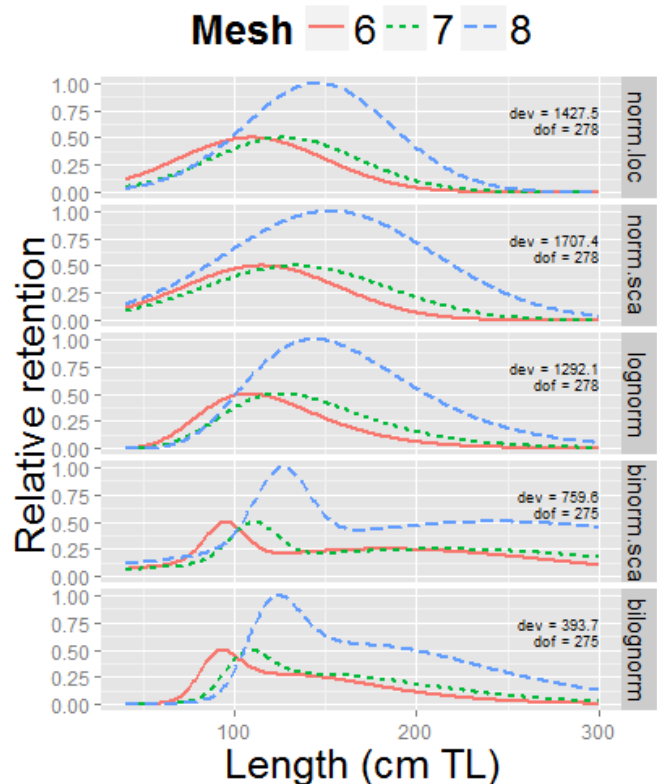
in catch of fish less than 85 cm TL do not reliably reflect variations in abundance of that demographic.

Estimating annual abundance of fish 85-116 cm TL and of fish  $\geq 169$  cm TL is a multi-step process (Box 1). Catch per length is adjusted using relative retention values from the curve. Adjusted catch is then used to complete the final estimates. The abundance and variance calculations for 117-168 cm TL fish are not shown here, but use data from harvest (as reported on Sturgeon Fishing Report Cards) and harvest rate (as estimated from mark-recapture data). Because the algorithm used to estimate harvest rate is pretty-clearly biased low (Gingras and DuBois 2014), the abundance estimates presented here are all likely biased somewhat high.

**Click to view Box 1 Stepwise process for estimating annual abundance of White Sturgeon 85-116 cm TL and  $\geq 169$  cm TL.**



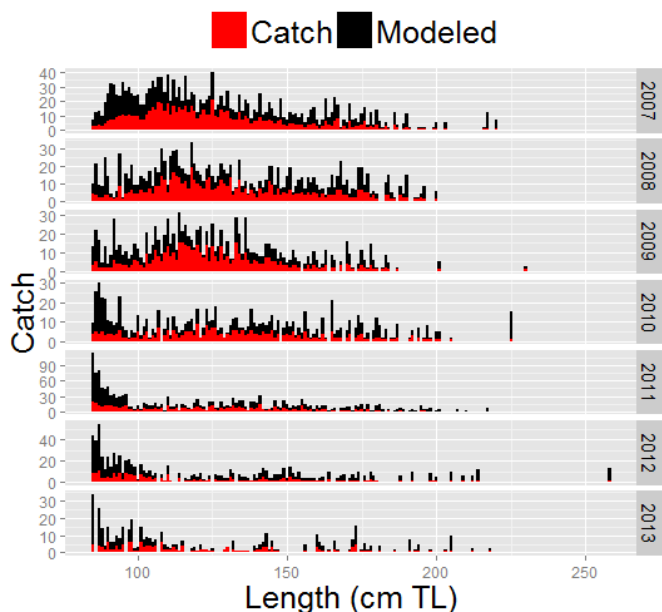
**Figure 1** Density plot of White Sturgeon length (centimeters total length [cm TL]) by trammel net mesh size (6\", 7\", and 8\"). Data from 1990-1991, 1993-1994, 1997-1998, 2001-2002, and 2005-2013. The solid vertical line is mean cm TL. The dashed vertical line is median cm TL.



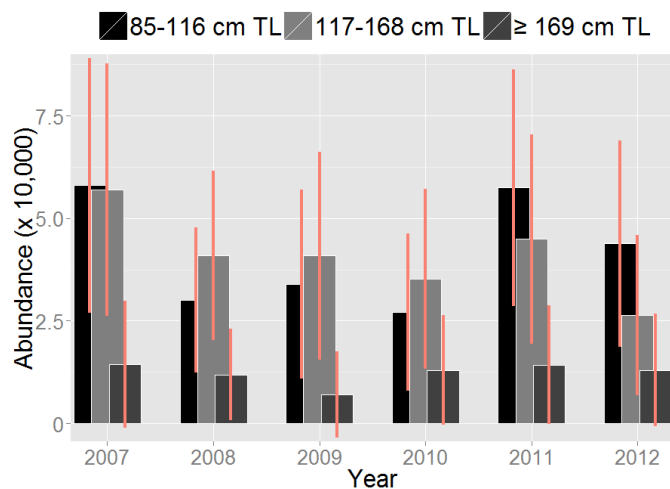
**Figure 2** Relative retention curves for White Sturgeon in each trammel net mesh size (6\", 7\", and 8\") for each of the five models over length range of 40-300 centimeters total length (cm TL). Model deviance (dev) and degrees of freedom (dof) displayed in the upper-right corner of each panel.

## Discussion

When modeling length frequencies, we did not consider size-dependent availability of fish to the nets because — while recreational and research catch shows that fish in both demographics are ubiquitous in the study area — there are no quantitative distributions or behavior



**Figure 3** Frequency distributions of White Sturgeon lengths (centimeters total length [cm TL];  $\geq 85$ ) for 2007-2013. Red bars represent catch. Black bars represent modeled (bi-log-normal) catch.



**Figure 4** White Sturgeon abundance estimates with 95% confidence intervals for 2007-2012 by size category (85-116 cm TL, 117-168 cm TL, and  $\geq 169$  cm TL).

data to work with. Thus, these should be considered estimates of regional abundance that may index and approximate system-wide abundance.

As expected from indices of Age-0 White Sturgeon abundance (California Department of Fish and Wildlife 2014) and presumed growth rates, the trends in estimated 2007-2012 annual abundance of fish 85-116 cm TL reflect growth and protracted recruitment of the modest 2006 cohort to the experimental trammel nets and recruitment of scarcely detectable cohorts for several years prior to 2006. The 2006 cohort is recruiting to legally harvestable size such that catch rate in the fishery has likely begun to increase modestly, but will likely decline rapidly unless harvest is reduced and/or anglers become more efficient.

The estimated 2007-2012 annual abundance of White Sturgeon  $\geq 169$  cm TL is relatively low and constant, which is expected from the facts that (1) the White Sturgeon fishery has long been popular and is recently highly effective (Gingras and DuBois 2014), (2) these fish are typically from cohorts prior to 1993, (3) a maximum size limit on harvest was first implemented in 1990, and (4) 1984-1994 indices of Age-0 White Sturgeon abundance were negligible. It is particularly important to reliably estimate the abundance of this demographic, because it includes the preponderance of spawning females and — being protected from legal harvest — it is the “insurance policy” (e.g., against drought) for this population. In an effort to improve the rigor of abundance estimates for this demographic, we plan to work with statisticians in an attempt to incorporate adjustments for its migratory behavior.

## Acknowledgments

Russell Millar (<https://www.stat.auckland.ac.nz/~millar/selectware/code.html>) developed and made available the “R” code we used for the creation and assessment of relative retention curves. U.S. Fish and Wildlife Service statisticians Ken Newman and Lara Mitchell helped us tremendously by pointing us toward Russell Millar’s work, coaching us on use of relative retention curves, and developing confidence intervals for these abundance estimates.

## References

- CDFW. 2014. Figure: Index of Annual Age-0 White Sturgeon Abundance, 1980-2014 <https://nrm.dfg.ca.gov/FileHandler.ashx?DocumentId=69133>.
- DuBois J and Gingras M. 2011. "Using Harvest Rate and Harvest to Estimate White Sturgeon Abundance." Interagency Ecological Program for the San Francisco Estuary Newsletter 24(3): 23-26.
- Gingras M. and DuBois J. 2014. "Bias in Estimated Annual Harvest Rates for White Sturgeon of the San Francisco Estuary." Interagency Ecological Program for the San Francisco Estuary Newsletter 27(2): 43-46.
- R Core Team (2014). *R: A language and environment for statistical computing*. R Foundation for Statistical Computing, Vienna, Austria. <http://www.R-project.org/>.

Did you know that quarterly highlights about current IEP science can be found on the IEP webpage along with a new calendar that displays IEP Project Work Team and other IEP-related public meetings? To view these features see the links below:

<http://www.water.ca.gov/iep/activities/calendar.cfm>  
<http://www.water.ca.gov/iep/highlights/index.cfm>

The IEP Newsletter is a quarterly publication that provides IEP program and science highlights as well as in-depth articles on important scientific topics for resource managers, scientists, and the public. The spring issue of the IEP Newsletter provides an annual overview of important results from all IEP monitoring programs and associated studies. Articles in the IEP newsletter are intended for rapid communication and do not undergo external peer review; all primary research results should be interpreted with caution.

If you would like to be notified about new issues of the quarterly IEP newsletter, please send an e-mail to Shaun Philippart (DWR), [shaun.philippart@water.ca.gov](mailto:shaun.philippart@water.ca.gov), with the following information:

- Name
- Agency
- E-mail address

### Article Submission Deadlines for Calendar Year 2016

<i>Issue</i>	<i>Article Submission Deadline</i>
Issue 1 (Winter)	January 15, 2016
Issue 2 (Spring)	April 15, 2016
Issue 3 (Summer)	July 15, 2016
Issue 4 (Fall)	October 15, 2016

Submit articles to [Shaun Philippart](#).

## **IEP NEWSLETTER**

3500 Industrial Blvd.  
West Sacramento, CA 95691



*For information about the Interagency Ecological Program, log on to our Web site at <http://www.water.ca.gov/iep/>. Readers are encouraged to submit brief articles or ideas for articles. Correspondence—including submissions for publication, requests for copies, and mailing list changes—should be addressed to Frank Keeley, California Department of Water Resources, P.O. Box 942836, Sacramento, CA, 94236-0001. Questions and submissions can also be sent by e-mail to: [frank.keeley@water.ca.gov](mailto:frank.keeley@water.ca.gov).*

# **IEP NEWSLETTER**

Louise Conrad, California Department of Water Resources, Lead Editor  
Brian Schreier, California Department of Water Resources, Contributing Editor  
Shaun Philippart, California Department of Water Resources, Managing Editor  
Frank Keeley, California Department of Water Resources, Editor

The Interagency Ecological Program for the San Francisco Estuary  
is a cooperative effort of the following agencies:

*California Department of Water Resources  
State Water Resources Control Board  
U.S. Bureau of Reclamation  
U.S. Army Corps of Engineers*

*California Department of Fish and Wildlife  
U.S. Fish and Wildlife Service  
U.S. Geological Survey  
U.S. Environmental Protection Agency  
National Marine Fisheries Service*

BEFORE CITING INFORMATION HEREIN,  
CONSIDER THAT ARTICLES HAVE NOT RECEIVED PEER REVIEW.