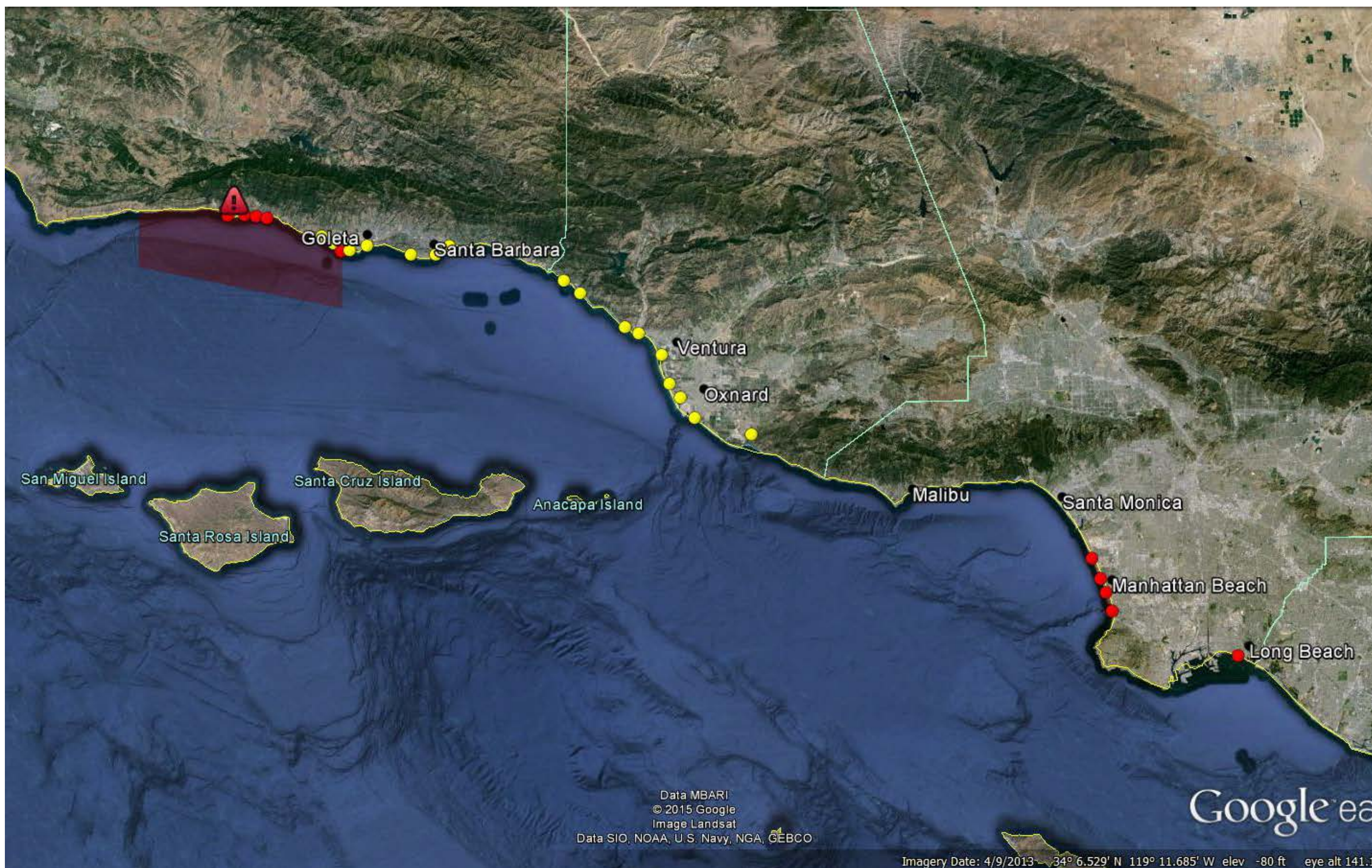


RECREATIONAL USES



Scope of Assessment:

- Evaluation of impacts to shoreline and off-shore recreation in Santa Barbara, Ventura, and Los Angeles Counties
- This includes:
 - Beach going (sitting, walking, running, dog walking, kite flying)
 - Scenic enjoyment, sightseeing, wildlife viewing
 - Camping
 - Water contact activities (swimming, surfing, kayaking, diving)
 - Recreational fishing (shore-based and off-shore)
 - Other offshore activities (tours, wildlife viewing)
- This does not include commercial fishing (that is a third party claim)



Some of the data and information sources:

- Shoreline and fisheries closures and advisories in Santa Barbara, Ventura, and Los Angeles Counties
- Official camping and day-use estimates at State Parks
- Automatic “car counter” tallies at Santa Barbara County shoreline sites
- Parking permit sales at selected beach-related parking lots
- Shoreline user counts conducted by MPA Watch citizen scientists, UC Natural Reserve System, and NRDA contractors
- Beach attendance estimates by lifeguards
- Data from the Baseline Characterization of Human Uses project conducted by Point97/Ecotrust and NaturalEquity
- Shoreline weather conditions
- Recreational fishing estimates from the California Recreational Fishing Survey
- Local recreation businesses



Ultimate Goal:

- To compensate the public for recreational losses through projects that increase or improve recreational opportunities.

