

Large Mammal Advisory Committee
Approved Project

QUARTERLY PROGRESS REPORT

Project Name: **Carson River Deer Herd Project**

2nd Quarter: (months/FY): Oct. -Dec. 2014 FY 2014/2015

Work Performed:

The purpose of this study is to determine home range, habitat use and movement patterns for the Carson River Deer herd. Deer were monitored via the Lotek webserver and on the ground (Fig. 1).

The last four collars were deployed by November 20, 2014. Fourteen collars are functioning properly but one collar has failed to drop off and still does not transmit to the satellite. However, ground monitoring has kept track of her status and she remains near Monitor Pass. Since the study began in July 2012, 33 deer have been captured and fitted with satellite collars (Table 1).

Vegetation sampling for fawning habitat was initiated during the last quarter and 63 plots have been sampled. Vegetation sampling is now suspended during the winter months and will continue next spring as soon as access allows.

Funds Expended:

	<u>This quarter</u>	<u>Total to date</u>
Personnel:	\$5,512.00	\$35,489.04
Operating Expense:	\$1,891.69	\$61,609.35
Total:	\$7,403.69	\$97,098.39

Work Anticipated for Next Quarter:

Deer will continue to be monitored daily for mortality. Weather station data will be collected for both spring and fall to determine climactic variables and how they relate to the timing of migration. This will be included in the final report. Analysis for 2012 and 2013 data will commence.

There are no further captures planned for this study. Deer will be monitored for as long as the collars remain on the animals. November 2015 will likely be the completion of data gathering for this study.

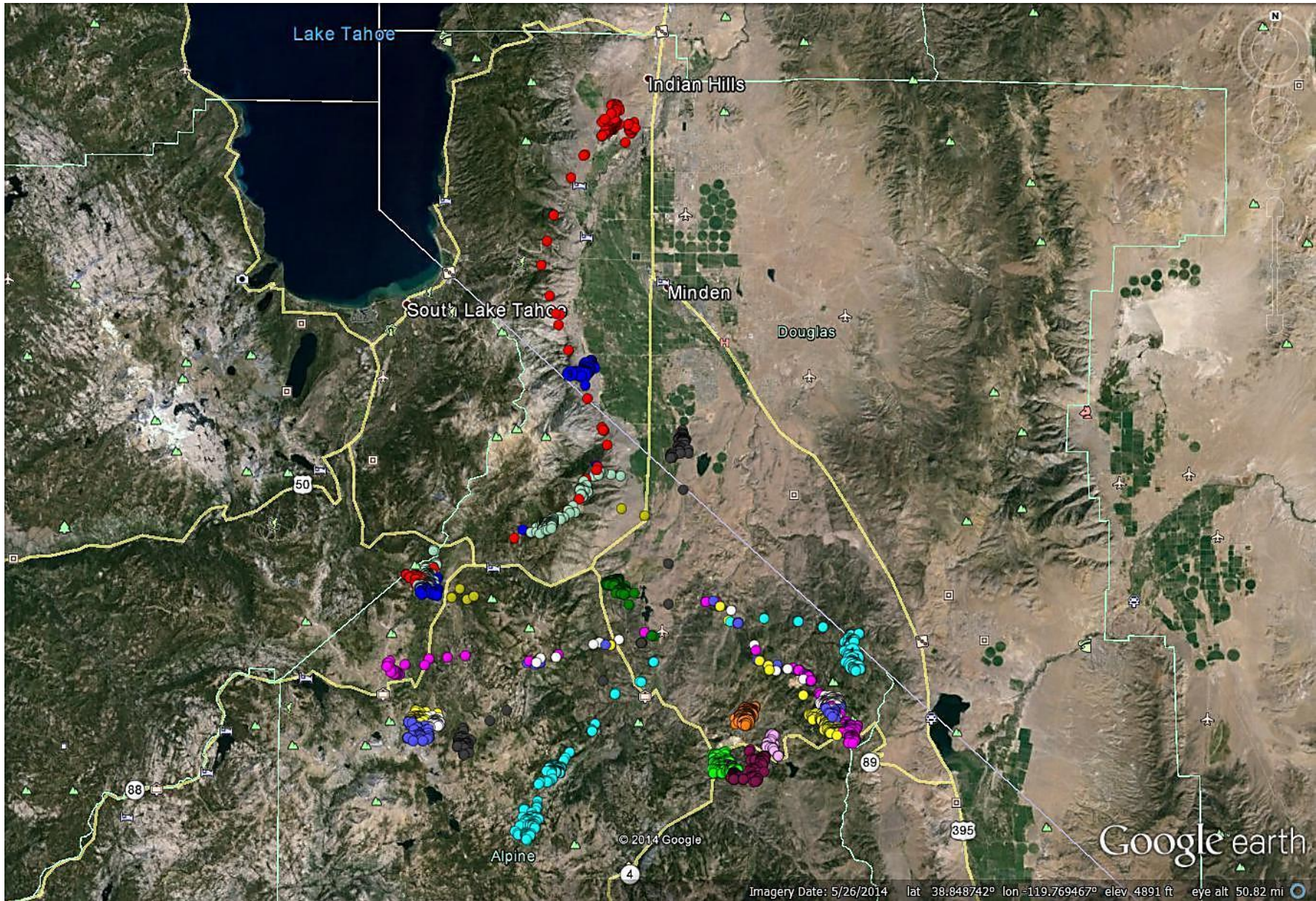


Fig. 1. Google image of deer locations for 14 deer monitored between Oct. 1 and Dec 15, 2014 for the Carson River Deer Herd Telemetry Study

CARSON RIVER DEER STUDY

DATE: 11/20/2014

							DEER ID				
SERIAL_NUM	FREQUENCY	DATE DEPLOY	LATITUDE	LONGITUDE	PLASTIC TAG	METAL ID	Location	OTHER			
32971	159.010	7/18/2012	38.73365	119.77599	508	8399	Indian Creek Reservoir	52 week drop off			
32971(b)	159.010	7/26/2013	38.40931	119.57609	516	8409	Forestdale	87 wk drop off			
32972	159.020	7/17/2012	38.65524	119.92001	509	8400	Blue Lakes Road	mort 9/13/12 retrieved 9/21/12			
32972(b)	159.020	11/14/2012	38.67002	119.66112	512	8402	Monitor Pass				
32973	159.030	7/17/2012	38.63056	119.91416	502	8392	Blue Lakes Road	52 week drop off			
32973(b)	159.030	7/24/2013	38.76579	119.95445	514	8404	Scott's Lake	52 week drop off			
32973(c)	159.030	10/28/2014	38.76434	119.96062	542	1890	Scott's Lake	52 week drop off			
32974	159.040	7/17/2012	38.65524	119.92007	501	8391	Blue Lakes Rd	52 week drop off			
32974(b)	159.040	7/26/2013	38.40698	119.57318	547	8410	Forestdale				
32974(c)	159.040	11/6/2014	38.64753	119.71442	523	8185	Silver Hill	52 wk drop off			
32975	159.050	7/19/2012	38.40015	119.58153	503	8393	Monitor Pass	52 week drop off			
32975(b)	159.050	7/24/2013	38.60792	119.68885	515	8405	Wolf Creek	52 week drop off			
32975(c)	159.050	11/6/2014	38.64754	119.70373	523	8018	Silver Hill	52 wk drop off			
32976	159.060	7/20/2012	38.62672	119.9082	504	8394	Blue Lakes Road	52 week drop off			
32976(b)	159.060	7/16/2014	38.60679	119.87617	519	8478	Sunset Lake	52?			
32977	159.070	8/20/2012	38.74514	119.91433	505	8395	Burnside Lake Road	52 week drop off			
32977(b)	159.070	7/15/2014	38.71958	119.9548	520	8462	Red Peak				
32978	159.080	7/24/2012	38.74896	119.77027	513	8403	Indian Creek Reservoir	mort/52 week drop off			
32978(b)	159.080	9/3/2014	38.66708	119.69837	521	8474	Loope Rd	52 weeks			
32979	159.090	7/18/2012	38.68101	119.77708	507	8398	Poor Boy Road	mort/52 week drop off			
32979 (b)	159.020	7/9/2013	38.76485	119.96058	517	8416	Scott's Lake	87 wk			
32979 (c)	159.020	11/13/2014	SLIPPED COLLAR			538	8020	Silver Hill	52 week		
33010	159.100	8/20/2012	38.75214	119.91851	511	8657	Burnside Lake Road	52 week drop off			
33010(b)	159.100	9/20/2013	38.67236	119.92354	525	8413	Blue Lakes Rd/parking lot				
33010(c)	159.100	7/14/2014	38.67801	119.95264	524	8027	Forestdale Rd	52 wk drop off?			
33535	159.535	3/15/2013	38.81622	119.80009	511	8657	ne of Woodsford	87 week drop off			
33535(b)	159.535										
32972(b)	159.020	11/14/2012	38.67002	119.66112	512	8402	Monitor Pass	52 week drop off			
33533	159.110	7/10/2013	38.37614	119.94923	506	8396	Forestdale	82 Week drop off			
33534	159.120	8/7/2014	38.4539	119.95720	518	8015	Scott's Lake	87 Week drop off			
33535	159.130	3/15/2013	38.80892	119.77697	511	8657	NE. Woodsford	87 Week drop off			
33536	159.140	7/9/2013	38.76524	119.9496	540	8414	Scott's Lake	87 Week drop off			
33460	159.150	7/10/2013	38.66348	119.92607	510	8397	Blue Lakes Rd	87 Week drop off			
32973(c)	159.030	10/28/2014	38.76434	119.96062	542	1890	Scott's Lake Rd	52 week drop off			
33535(b)	159.130	11/20/2014	38.65651	119.66993	546	8269	Heenen Lake	52 week drop off			
32979(d)	159.090	11/20/2014	38.73281	119.77388	526	8014	Indian Creek Reservoir	52 week drop off			

Table 1. Summary of all deer captured between July 2012 and November 20, 2014 for the Carson River Deer Herd Telemetry study (NC-8001-09).