

Large Mammal Advisory Committee

Approved Project

QUARTERLY PROGRESS REPORT

Project Name: Elk Expansion into Plumas and Sierra Counties

Quarter: 2nd; October 1-December 31, 2014/ FY 2014/15 (months/FY)

**Work Performed:**

The purpose of this study is to gain baseline information on a small population of rocky mountain elk (*Cervus elaphus*) that have been establishing themselves into Plumas and Sierra Counties. We continued to monitor daily movements of one collared bull elk.. Ten camera stations have been deployed between October and December 2014 at various locations, including an area where elk were originally photographed in early summer. Cameras were set in locations where people have reported seeing elk or suitable habitat.

Elk were seen around Coyote Hills (Fig. 1) and Siegfried Canyon as recently as November 26<sup>th</sup>. Recent elk sign including tracks and scat were detected at Siegfried Canyon on December 8<sup>th</sup>. However, no elk were seen on camera stations that were placed in the vicinity.

**Funds Expended:**

	<u>This quarter</u>	<u>Total to date</u>
Personnel:	\$ 0	\$0
Operating Expense:	\$ 0	\$18,498.32
Total:	\$ 0	\$18,848.32

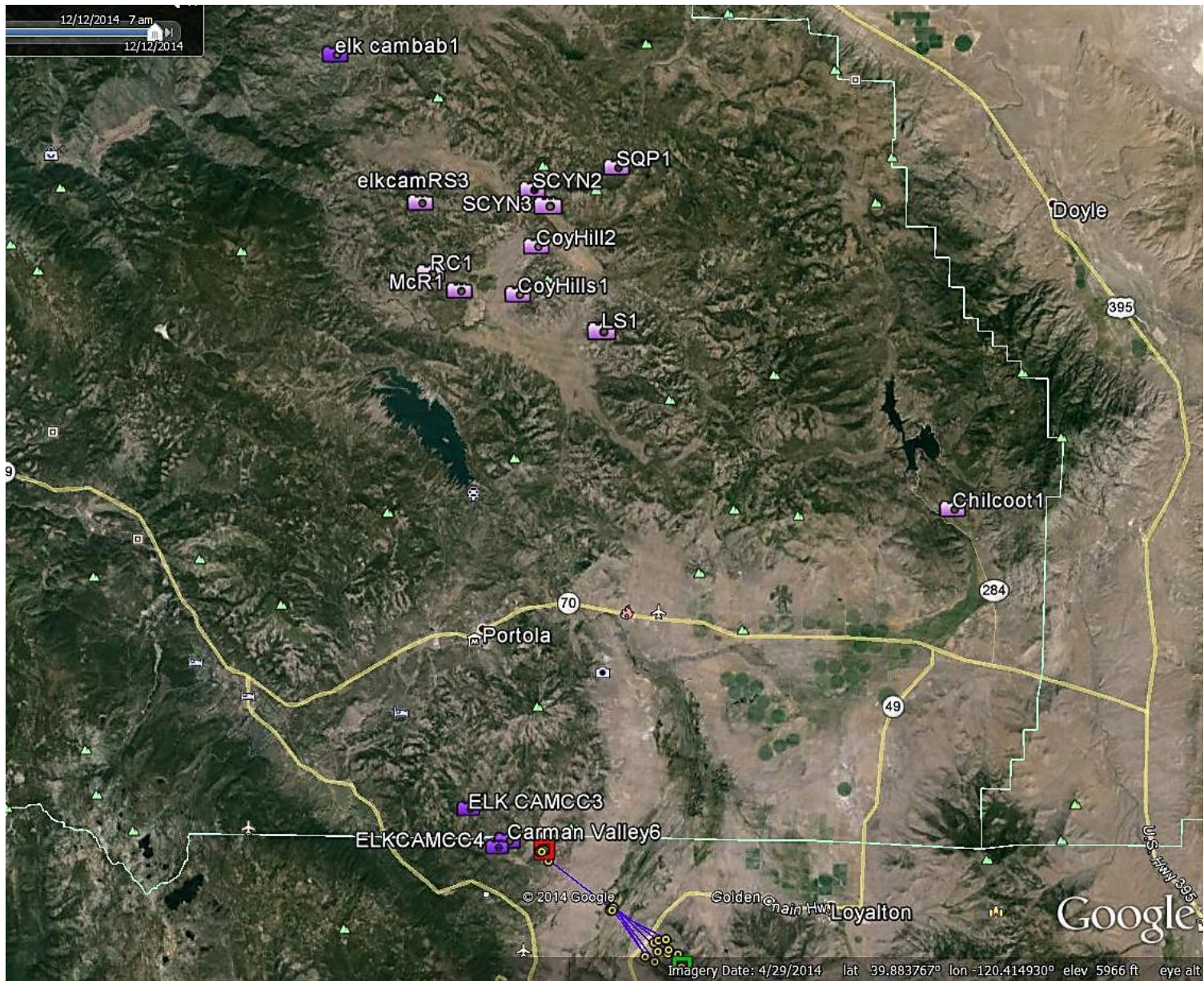


Fig. 1. Google imagery depicting locations of camera stations deployed to detect elk locations. Cameras were deployed at locations where sightings, including photographic evidence, were reported.