

123°51.5'W 123°51'W 123°50.5'W 123°50'W 123°49.5'W 123°49'W 123°48.5'W

39°45.5'N
39°45'N
39°44.5'N

39°45.5'N
39°45'N
39°44.5'N

39°44.5'N
39°44'N

39°44.5'N
39°44'N

39°43.5'N
39°43'N

39°43.5'N
39°43'N

39°42.5'N
39°42'N

39°42.5'N
39°42'N

39°41.5'N
39°41'N

39°41.5'N
39°41'N

39°40.5'N
39°40'N

39°40.5'N
39°40'N

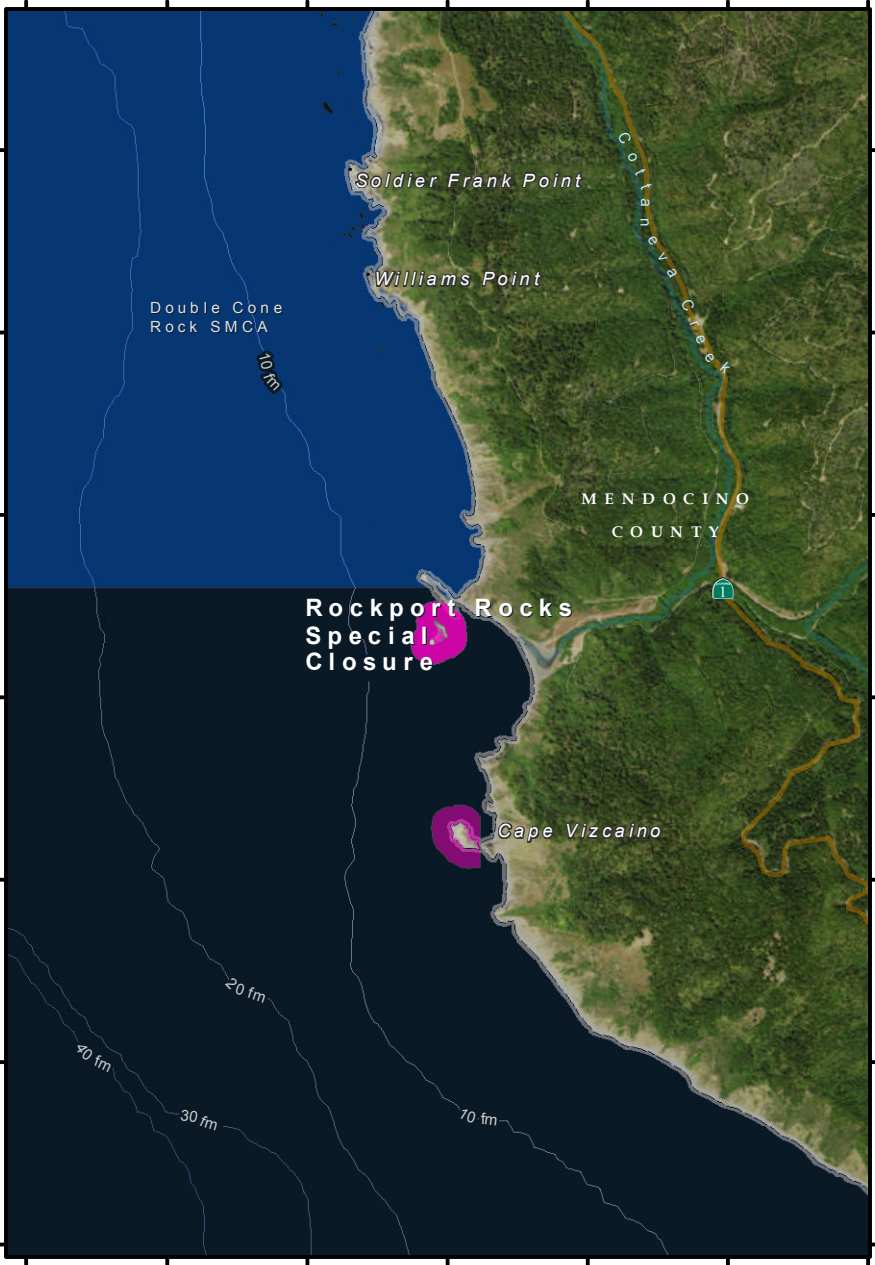
39°39.5'N
39°39'N

39°39.5'N
39°39'N

39°38.5'N
39°38'N

39°38.5'N
39°38'N

123°51.5'W 123°51'W 123°50.5'W 123°50'W 123°49.5'W 123°49'W 123°48.5'W



Double Cone
Rock SMCA
10 fm

Soldier Frank Point

Williams Point

MENDOCINO
COUNTY

Rockport Rocks
Special
Closure

Cape Vizcaino

20 fm

40 fm

30 fm

70 fm

Colusa Creek

