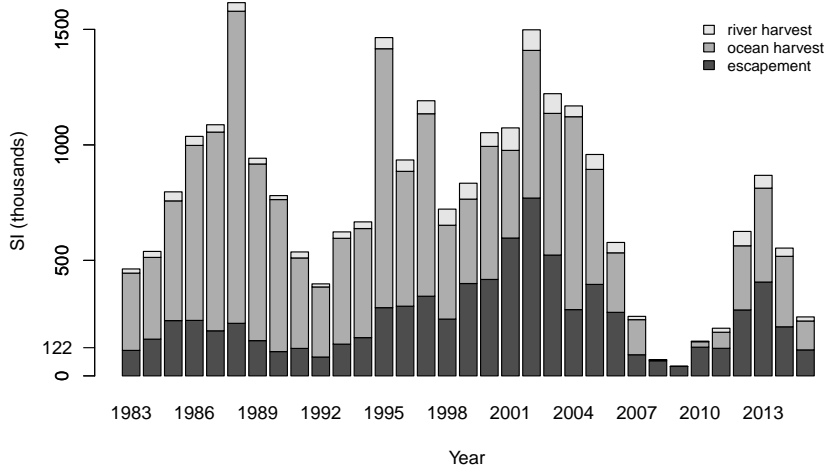
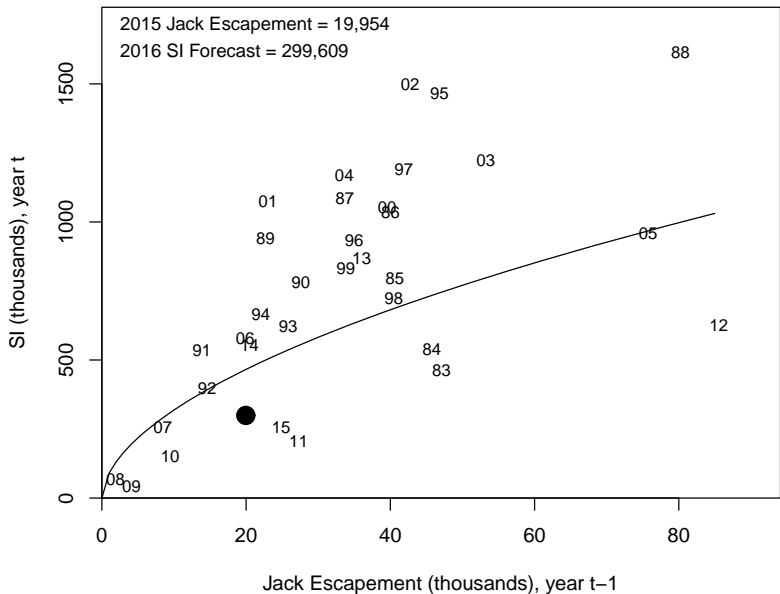


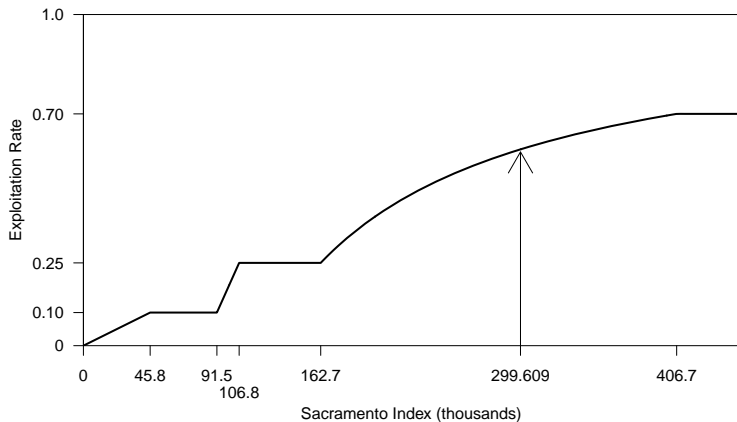
2015 Sacramento Index (SI): 255,287



2016 SI forecast: 299,609

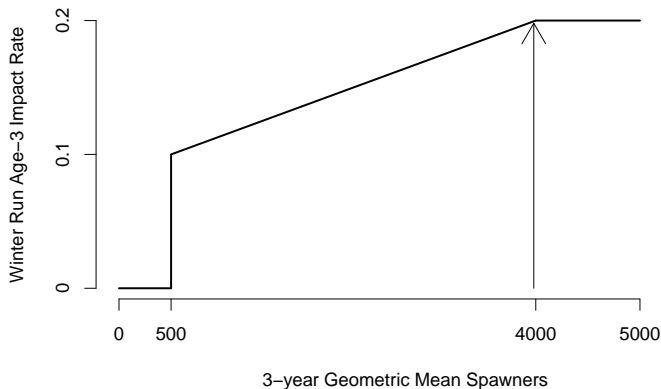


2016 management



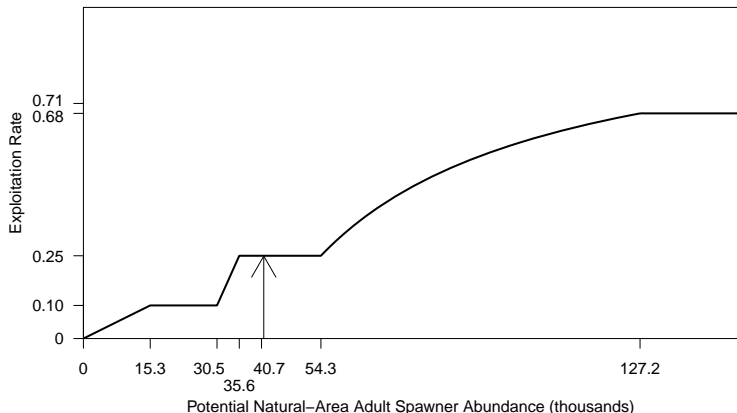
- ▶ Abundance forecast reduced substantially from 2015
- ▶ Must target an escapement of at least 122,000 (59% exploitation rate)
- ▶ 2015 regs: preliminary escapement prediction of 153,300
- ▶ Unlikely to constrain 2016 fisheries

2016 winter Chinook management



- ▶ Geometric mean: 3981
- ▶ Maximum allowable age-3 impact rate: 19.9%
- ▶ 2015 regs: preliminary prediction of 17.1%
- ▶ Likely to constrain 2016 fisheries south of Point Arena

2016 management



- ▶ Potential spawner abundance forecast: 41,211
- ▶ Must target an escapement of at least 30,909 (25% exploitation rate)

2016 management, contd.

- ▶ 2015 regs:
 - ▶ Tribal allocation: 50% of total harvest
 - ▶ River recreational allocation: 32.4% of non-tribal harvest
 - ▶ Natural-area adult spawners prediction: 14,540
 - ▶ Exploitation Rate: 65%

- ▶ Will constrain 2016 fisheries south of Cape Falcon, OR

2016 California Coastal Chinook

- ▶ Max allowable KRFC age-4 ocean harvest rate of 16%
- ▶ 2015 fisheries: preliminary prediction of 17.4%
- ▶ Unlikely to constrain 2016 fisheries