

California

2016

BIG GAME HUNTING

**NON-REPORTING
PENALTY FEE
IMPLEMENTED**

**BIG GAME DRAWING
DEADLINE JUNE 2, 2016**

**HUNTING ITEMS ON SALE
APRIL 15, 2016**

Photo by Shawn Lindey



California 2016 BIG GAME HUNTING

STATE OF CALIFORNIA Governor Edmund G. Brown, Jr.

NATURAL RESOURCES AGENCY Secretary John Laird

DEPARTMENT OF FISH & WILDLIFE Director Charlton H. Bonham

FISH AND GAME COMMISSION Eric Sklar, *President*, St. Helena
Jacque Hostler-Carmesin, *Vice President*, McKinleyville
Anthony Williams, *Member*, Huntington Beach
Vacant, *Member*
Vacant, *Member*
Mike Yaun, *Acting Executive Director*, Sacramento
Susan Ashcraft, *Acting Asst. Executive Director*, Sacramento

THE CALIFORNIA DEPARTMENT OF FISH & WILDLIFE 1416 9th Street, 12th Floor Sacramento, CA 95814
Phone: (916) 322-8911 Fax: (916) 322-8989
www.wildlife.ca.gov

CDFW CONTRIBUTORS Special thanks to staff at License & Revenue Branch, Office of Communications, Education & Outreach, Wildlife Branch, and Law Enforcement Division.

ON THE COVER *Photo by Shawn Lindey.*
Tulare County, Zone D8, February 2015.

NONDISCRIMINATION "Any person excluded from participation in, denied the benefits of, or otherwise subjected to discrimination under any program of the California Department of Fish and Wildlife (CDFW), on the grounds of age, race, national origin, disability, religious or political affiliation, color, sex, ancestry, marital status or sexual orientation should contact the nearest regional office of the Department or its headquarters in Sacramento, California, telephone (916) 322-8911. In addition, you may contact the U.S. Equal Employment Opportunity Commission, Washington, D.C. or a local EEOC office listed in your phone directory under U.S. Government."

Alternate communication format is available upon request. If reasonable accommodation is needed contact CDFW at (916) 322-8911 or the California Relay (Telephone) Service for the deaf or hearing-impaired from TDD phones at (800) 735-2929.

This booklet is intended to assist hunters in applying for deer and other big game license tags. It does not replace the California Hunting Regulations for Mammals and Furbearers. For more detailed information concerning regulations, consult the California hunting regulations, available at any CDFW office (see page 3 for phone numbers); or online at www.wildlife.ca.gov/regulations.

The CDFW neither endorses products or services listed nor accepts any liability arising from the use of products or services listed.



Hunting licenses are sold at most of the following CDFW offices and at authorized license agents statewide. License sales are also available online at www.ca.wildlifelicense.com/InternetSales and by telephone at (800) 565-1458. To purchase items via online or telephone sales, you must already have hunter education on file in the ALDS.

NORTHERN REGION

Serving Del Norte, Humboldt, Lassen, Mendocino, Modoc, Shasta, Siskiyou, Tehama and Trinity counties
601 Locust Street, Redding, CA 96001
(530) 225-2300
8:00 AM - 4:30 PM, Monday - Friday
AskRegion1@wildlife.ca.gov

NORTH CENTRAL REGION

Serving Alpine, Amador, Butte, Calaveras, Colusa, El Dorado, Glenn, Lake, Nevada, Placer, Plumas, Sacramento, San Joaquin, Sierra, Sutter, Yolo and Yuba counties
1701 Nimbus Road, Rancho Cordova, CA 95670
(916) 358-2900
8:00 AM - 4:30 PM, Monday - Friday
R2Info@wildlife.ca.gov

BAY DELTA REGION

Serving Alameda, Contra Costa, Marin, Napa, Sacramento, San Mateo, Santa Clara, Santa Cruz, San Francisco, San Joaquin, Solano, Sonoma, and Yolo counties
7329 Silverado Trail, Napa, CA 94558
(707) 944-5500
8:00 AM - 4:30 PM, Monday - Friday
AskBDR@wildlife.ca.gov

CENTRAL REGION

Serving Fresno, Kern, Kings, Madera, Mariposa, Merced, Monterey, San Benito, San Luis Obispo, Stanislaus, Tulare and Tuolumne counties
1234 E. Shaw Avenue, Fresno, CA 93710
(559) 243-4005
8:00 AM - 4:30 PM, Monday - Friday
Reg4Sec@wildlife.ca.gov

MARINE REGION

Serving the entire California coast, from border to border and three nautical miles out to sea.
20 Lower Ragsdale Drive, Suite 100
Monterey, CA 93940
(831) 649-2870
8:00 AM - 4:30 PM, Monday - Friday
AskMarine@wildlife.ca.gov

SOUTH COAST REGION

Serving Los Angeles, Orange, San Diego, Santa Barbara and Ventura counties
3883 Ruffin Road, San Diego, CA 92123
(858) 467-4201
8:00 AM - 4:30 PM, Monday - Friday
AskR5@wildlife.ca.gov

LICENSE AND REVENUE BRANCH

1740 N. Market Boulevard, Sacramento, CA 95834
(916) 928-5805
8:00 AM - 5:00 PM, Monday - Friday
LRB@wildlife.ca.gov

EUREKA FIELD OFFICE

619 Second Street, Eureka, CA 95501
(707) 445-6493
8:00 AM - 4:30 PM, Monday - Friday

STOCKTON FIELD OFFICE

2109 Arch Airport Road, Stockton, CA 95206
(209) 234-3420
8:00 AM - 4:30 PM, Monday - Friday

LOS ALAMITOS FIELD OFFICE

4665 Lampson Avenue Ste. C, Los Alamitos, CA 90720
(562) 342-7100
8:00AM - 4:30 PM, Monday - Friday

INLAND DESERTS REGION

Licenses not sold at this location
Serving Imperial, Inyo, Mono, Riverside and San Bernardino counties
3602 Inland Empire Blvd., Suite C-220, Ontario, CA 91764
(909) 484-0167
8:00 AM - 5:00 PM, Monday - Friday
AskRegion6@wildlife.ca.gov

CONTACT US

Mobile www.dfg.ca.gov/mobile
Facebook www.facebook.com/CaliforniaDFW
Twitter Text follow CaliforniaDFW to 40404 in the US
Blogs cdfgnews.wordpress.com
Flickr www.flickr.com/photos/CaliforniaDFG
YouTube www.youtube.com/user/CaliforniaDFG

REGS on the GO... Did you know you can now download the regulations to your smart phone or other device? By utilizing iBooks on Apple devices or your favorite book reader on the Android platform you can download the regulations for reference at any time. Regulations can be found at www.wildlife.ca.gov/Regulations.

SUPPORT CALIFORNIA WILDLIFE OFFICERS

Buy a 2016 Warden Stamp today. Just \$5!



Funds support CDFW's K-9 program and provide equipment and training to help stop wildlife crimes.

www.wildlife.ca.gov/Warden-Stamp

~ Protecting California Since 1871 ~



Nancy Rodriguez



Karson Gilbert



Tony Morris



Clifford Davis



Bill Ehorn



Tiffany Shwartz



Mike Macadang



Walter Silva

CONTENTS

Contacts.....	3
Harvest Tag Reporting.....	7
Hunter Education Program.....	7
What's New This Year.....	8
Licenses and Tag Fees.....	10
Random Drawing for Fund-Raising Big Game Tags.....	11
A Properly Filled-out Tag.....	12
General Information.....	14
Big Game Drawing Worksheet.....	16
Deer Hunting.....	17
Big Game Drawing Information.....	20
2015 Preliminary Deer Harvest by Antler Class.....	24
2015 Deer Tag Drawing Statistics.....	26
2016 Proposed Deer Hunts.....	30
2016 Deer Zones Map.....	32
SHARE Program Hunts.....	39
Elk, Antelope and Bighorn Sheep Hunting.....	40
2015 Elk Tag Drawing Statistics.....	44
2016 Proposed Elk Hunts.....	47
2015 Antelope Tag Drawing Statistics.....	51
2016 Proposed Antelope Hunts.....	52
2015 Bighorn Sheep Drawing Statistics and 2016 Proposed Hunts.....	53
Wild Pig Hunting.....	54
Bear Hunting.....	56
Hunting Out of State.....	58
Declaration for Entry Into California of Game, Fish, Birds, or Animals.....	59
Frequently Asked Questions.....	60
Unlawful Actions.....	64



DEADLINE TO APPLY FOR THE BIG GAME DRAWING

You may apply at any CDFW license sales office, license agent or online at CDFW's website at www.ca.wildlifelicense.com/InternetSales. Telephone license sales are also available at (800) 565-1458. All applications for the Big Game Drawing must be submitted and the sales transaction completed before midnight on June 2, 2016.

HARVEST TAG REPORTING

DEER TAG HOLDERS CAN AVOID A PENALTY AND ASSIST THE DEPARTMENT IN ASSESSING DEER POPULATIONS BY RETURNING A COMPLETED HARVEST REPORT.

The Department models populations (in part) using harvest data from tag returns, so accurate hunter harvest reports are important. Harvest numbers are combined with other data allowing the Department to project population numbers and trends. Hunter harvest information is used to calculate the number of animals (allowable harvest) that can be harvested without harming the overall population. Timely reporting is necessary so the Department has enough time to analyze and incorporate last year's harvest data for the upcoming hunting season.

In addition, level of effort collected from successful and unsuccessful hunters is used by the Department as a rough measure of deer population trends. Increases or decreases in effort over time are used to infer changes in deer populations.

Remember, there are deadlines for submitting completed reports, and beginning July 2016 deer tag holders who do not submit a completed harvest report will be assessed a \$21.60 Deer Harvest Non-Reporting Fee.

TAG	Reporting	Countersigned Requirement	Length of time to retain tag
DEER	Successful hunters must report within 30 days of harvest or by January 31, whichever comes first. Unsuccessful hunters and hunters who did not hunt must report by January 31. Hunters who do not report by the deadline will be assessed a non-reporting penalty fee of \$21.60 when purchasing their deer tag drawing application or deer tag in the 2017 license year.	Persons Authorized to Validate (see page 13)	Keep tag attached for 15 days thereafter the season closes. Retain harvest report cards submitted online until March 1.
BEAR	Successful hunters must return report cards immediately. Hunters who were unsuccessful or did not hunt must return report cards by February 1.	CDFW Staff Only	Retain head & skin for 15 days thereafter season closes.
ELK	Successful and unsuccessful hunters must return report cards within one week of season closure.	Persons Authorized to Validate (see page 13)	Keep tag attached 15 days thereafter season closes.
PRONGHORN ANTELOPE	Successful and unsuccessful hunters must return report cards within one week of season closure.	Not Required	Keep tag attached 15 days thereafter season closes.
BIGHORN SHEEP	Successful hunters must report by phone within 24 hours. Successful and unsuccessful report cards must be returned within 10 days of season closure.	CDFW Staff Only	N/A
WILD PIG	Successful hunters must return report cards immediately.	Not Required	N/A



HUNTER EDUCATION PROGRAM

BASIC Pass on the Tradition: Be a Hunter Education Instructor!

Do you love to hunt? The California Department of Fish and Wildlife needs volunteer Hunter Education Instructors. Pass on the tradition of hunting to future generations! For more information on becoming a Hunter Education Instructor, visit our website at www.wildlife.ca.gov/Hunter-Education or call (916) 653-1235.

ADVANCED Take Basic Hunter Education to the Next Level

Advanced Hunting Clinics focus on the "how-tos" of hunting and are designed for both the novice and experienced hunter. The clinics expand on what is taught in the basic Hunter Education and provide one to two days of training in specialized areas at a level that time does not allow for in the standard hunter education course. You will learn more about biology, habitat needs, hunting regulations, game care and safety, blackpowder hunting, wilderness navigation, and more. Additionally, participants will discuss hunting techniques and hunter ethics. All clinics include some form of field demonstration or hands-on training. What happens after you pull the trigger? Students are taught the proper way to field dress an animal and how to butcher and prepare for the table.

For additional information about the Advanced Hunter Education Program as well as clinic dates and locations, visit www.wildlife.ca.gov/Hunter-Education/Advance or Contact Lt. Alan Gregory at alan.gregory@wildlife.ca.gov.

Sea un instructor de la Educación del Cazador. El California Department of Fish and Wildlife solicita instructores de cacería responsable. Éres aficionado a la cacería? Desea pasarle a la siguiente generación la tradición de la cacería? Para más información, llame al CDFW (916) 653-1235.

NEW in 2016

MANDATORY DEER HARVEST REPORTING

STARTING THIS YEAR, NON-REPORTING FEES WILL BE ASSESSED

Deer tag holders who fail to submit a harvest report for any 2016 deer tag by the due dates listed below will be assessed a \$21.60 non-reporting penalty fee when purchasing a deer tag drawing application or deer tag in the 2017 license year.

DEER TAG REPORTING DEADLINES

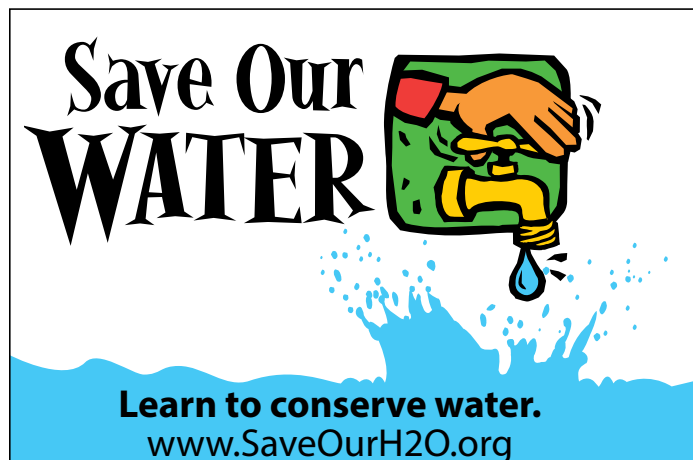
- **Successful** hunters must submit a completed report within 30 days of taking a deer or by January 31st, whichever comes.
- **Unsuccessful** hunters must submit a completed report indicating they were unsuccessful by January 31st.
- Tag holders who **DID NOT HUNT** must submit a completed report indicating they did not hunt by January 31st.

HOW TO SUBMIT A REPORT:

Online – Submit a harvest report for each deer tag you are issued at www.wildlife.ca.gov/tagreporting. When you have successfully submitted your report online, you will receive a confirmation number. You must record the confirmation number in the space provided on the harvest report card and retain the harvest report card until March 1. Tags reported online must be surrendered to the Department upon demand.

By Mail – any person, who does not submit a harvest report for their deer tag online, must return the report card portion of each deer tag postmarked by January 31, 2017 to:

CDFW Wildlife Branch
PO Box 944209
Sacramento, CA 94299-0002



DEER TAG CLASSIFICATION CHANGES

For 2016 deer hunting season, the following deer tags have changed classifications. Please refer to Proposed 2016 Deer Hunt Charts on page 30 for more information.

- **D6 changed from Premium to Restricted Deer Hunt** (tag quota filled on August 3, 2015)
- **D7 changed from a Restricted Deer Hunt to an Unrestricted Deer Hunt** (tag quota filled on August 14, 2015)
- **A18 changed from an Unrestricted to a Restricted Deer Hunt** (tag quota filled on July 4, 2015)
- **A22 changed from a Premium to a Restricted Deer Hunt** (tag quota filled on July 29, 2015)

SHARE ELK HUNTS

SHARE will offer 26 elk hunts on 20 properties in Del Norte, Humboldt, Mendocino and Siskiyou counties. Property and application information will be posted on the SHARE webpage on May 15th.

SHARE properties will offer access for:

- 10 bull elk tags
- 20 antlerless elk tags
- 3 junior only antlerless elk tags

For more information about these hunts or the SHARE Program please visit the SHARE website at: www.wildlife.ca.gov/Hunting/SHARE.



Matthew Lenney

LEAD FREE HUNTING AMMUNITION UPDATE

California to Require Use of Lead Free Hunting Ammunition State-wide by July 1, 2019.

In October 2013 Assembly Bill 711 was approved by the Governor and chaptered into law by the Secretary of State. AB 711 added several sections to Fish and Game Code, one of which (3004.5(b)) requires a complete ban on the use of lead ammunition when taking wildlife anywhere in the State by July 1, 2019. CDFW conducted extensive public outreach during 2014 and proposed regulations that phase-in the nonlead requirement. This outreach effort included question and answer sessions at sportsmen's shows, meetings with hunting organizations and a series of eight public workshops throughout the state. CDFW then presented draft regulations, as modified by public input from these workshops, to the Fish and Game Commission.

In April 2015, the Fish and Game Commission adopted CDFW's proposed regulations, which will implement the nonlead requirement in the following three phases:

PHASE 1 Effective July 1, 2015, nonlead ammunition will be required when taking Nelson bighorn sheep and all wildlife on state wildlife areas and ecological reserves.

PHASE 2 Effective July 1, 2016, nonlead shot will be required when taking upland game birds with a shotgun, except for dove, quail, snipe, and any game birds taken on licensed game bird clubs. In addition, nonlead shot will be required when using a shotgun to take resident small game mammals, furbearing mammals, nongame mammals, nongame birds, and any wildlife for depredation purposes.

PHASE 3 Effective July 1, 2019, nonlead ammunition will be required when taking any wildlife with a firearm anywhere in California.

Existing restrictions on the use of lead ammunition in the California condor range remain in effect while implementation proceeds.

NONLEAD AMMUNITION IMPLEMENTATION

PHASE 1

JULY 1, 2015



Nonlead ammo required on all CDFW wildlife areas, ecological reserves and bighorn sheep hunts

PHASE 2

JULY 1, 2016



Nonlead shot required when using a shotgun to take resident small game mammals, furbearing mammals, nongame mammals, nongame birds, any wildlife for depredation purposes, and upland game birds except for dove, quail, snipe, and any game birds taken on licensed game bird clubs

PHASE 3

JULY 1, 2019



Nonlead ammo required when taking any wildlife with a firearm in California

LICENSES & TAGS

Hunting License & Tag Fees

HUNTING LICENSES

Resident	\$47.01
Nonresident	\$163.65
Junior	\$12.45
Disabled Veterans*	\$7.30
Recovering Service Members*	\$7.30
Duplicate Hunting License	\$10.54

DEER TAGS & TAG DRAWING APPLICATIONS

First Deer Tag/Drawing Application

Resident	\$31.06
Nonresident	\$276.05

Second Deer Tag/Drawing Application

Resident	\$38.62
Nonresident.....	\$276.05
Pronghorn Antelope Tag Drawing Application	\$8.13
Elk Tag Drawing Application	\$8.13
Bighorn Sheep Tag Drawing Application	\$8.13
Duplicate Big Game Tag**	\$10.04

FUND-RAISING RANDOM DRAWING TAG APPLICATIONS

Open Zone Deer Tag	\$5.97
Grizzly Island Elk Tag	\$5.97
Northeastern CA Pronghorn Antelope Tag	\$5.97

BEAR TAGS

Resident	\$45.62
Nonresident	\$290.75

WILD PIG TAGS

Resident	\$22.42
Nonresident	\$75.34

HUNTER EDUCATION

Hunter Education Equivalency Exam***	\$52.00
Duplicate Hunter Education Certificate****	\$6.22

*Initial qualification must be done at a CDFW license sales office, see page 14 for more information.

**Available at any CDFW license sales office.

***Available at regional CDFW license sales offices only by appointment. NOTE: Not recognized as proof of Hunter Education.

****Customers with CDFW verified Hunter Education Certificates in their ALDS customer record may purchase duplicate hunter education certificates at license agents or online.

Interested in a Lifetime Hunting License?

Visit www.wildlife.ca.gov/Licensing/Lifetime for details!

Random Drawing for Fund-Raising Big Game Tags

Fund-raising random drawing tags generate dedicated funding for wildlife management programs that benefit big game species. In 2015, fund-raising random drawing tags generated more than \$200,000 for big game management in California.

Fund-raising Random Drawing Tag Basics:

- Any resident or nonresident who will be age 12 or older as of July 1, 2016 may apply.
- No limit on the number of applications you can submit.
- Does not use or affect your preference points.
- Winners are awarded a tag at no additional cost.
- A hunting license is not required to apply, but must be purchased if drawn.
- Apply from April 15, 2016 through June 2, 2016 at license agents, CDFW license sales offices, online at www.ca.wildlifelicenses.com/InternetSales or by telephone at (800)565-1458.
- Tags are awarded by random lottery which is run within 10 business days of the deadline. Winners are notified by phone.



OPEN ZONE DEER TAG

An Open Zone deer tag allows the hunter to hunt during the authorized season dates of any hunt, using the specific method and meeting any special conditions of the tag for that hunt.

NORTHEASTERN CALIFORNIA PRONGHORN ANTELOPE TAG

The Fund-raising Random Drawing Antelope Tag allows the hunter to hunt in any of the Northeastern antelope zones, (Mount Dome, Clear Lake, Likely Tables, Lassen, Big Valley and Surprise Valley) with any legal method. The hunt dates are from July 30, 2016 to September 18, 2016.

GRIZZLY ISLAND ELK TAG

The Grizzly Island Elk Tag is valid in the grizzly Island hunt zone, with any legal method. Only one elk may be harvested. The hunt dates are from August 6, 2016 to September 4, 2016.

OLD DAD AND KELSO PEAK DESERT BIGHORN SHEEP TAG

This fund-raising tag is valid only in the Old Dad and Kelso Peak hunt zone. Season dates are from November 5, 2016 through February 5, 2017. Any resident or nonresident who will be age 16 or older as of July 1, 2016 may apply. If drawn, the hunter must attend a mandatory orientation to receive the tag.



A Properly Filled-out Tag



All tag holders upon the killing of any big game shall immediately fill out all portions of the tag including the report card. Upon killing any big game animal, the hunter shall immediately fill out the tag completely, legibly, and permanently, and cut out or punch out and completely remove notches or punch holes for the month and date of kill. The license tag must be attached to the antlers of an antlered animal or to the ear of an antlerless animal immediately upon being killed.

Deer and elk tags shall be countersigned before transporting, except for the purpose of taking it to the nearest person authorized to countersign the license tag. Bear tags shall only be countersigned by a CDFW employee before transporting, except for the purpose of taking it to the nearest CDFW employee. If CDFW offices are closed, the bear tag shall be validated within one (1) business day of transporting the bear from the point where taken.

CDFW offers harvest reporting online for hunters to report their successful and unsuccessful big game tags at www.wildlife.ca.gov/tagreporting. Once the hunter completes the harvest reporting online, he/she will receive a report confirmation number. Hunters must write the report confirmation number on the space provided on the report card. Hunters do not have to mail in the physical harvest report card, as it has now been reported. CDFW encourages all hunters to use this new service to meet their harvest reporting requirements.

NON-REPORTING DEER TAG PENALTY

Deer tag holders who fail to submit a harvest report for any 2016 deer tag by January 31, 2017, will be assessed a \$21.60 non-reporting penalty fee when purchasing a deer tag drawing application or deer tag in the 2017 license year.

Attach to antler

16 DR
STATE OF CALIFORNIA
DEPARTMENT OF FISH AND WILDLIFE
DEER TAG

Punch above to attach to animal

A
ZONE A ARCHERY AND GENERAL SEASONS - BUCK
LEAD AMMO RESTRICTIONS - SEE REGULATIONS FOR AFFECTED CONDOR AREA.
IMMEDIATELY AFTER KILLING DEER COMPLETELY PUNCH THROUGH THE MONTH AND DATE OF KILL. FILL IN INFORMATION REQUESTED AND ATTACH TAG SECURELY TO ANTLER OF ANTLERED DEER OR EAR OF ANY OTHER DEER (SEC. 709.5, TITLE 14, CCR).

Doc No: D-0016218800-6
GO ID: 1047725804
STATE ID: H000**** CA
JOE HUNTER
1234 HUNTING AVE
SACRAMENTO, CA 95834

HARVEST INFORMATION

JUL SEP OCT NOV DEC

1 2 3 4 5 6 7 8 9 10
13 12 11 10 9 8 7 6 5 4
23 22 21 20 19 18 17 16 15 14

DATE: 8/20/16 TIME: 7:00 AM PM
ZONE OF KILL: A - North Unit A - South Unit
LOCALITY OF KILL: Knoxville Wildlife Area
(Distance and Direction from Nearest Landmark)

COUNTY OF KILL: Lake County
KILLED ON: PRIVATE LAND PUBLIC LAND
METHOD OF TAKE: Rifle
ANIMAL GENDER: MALE FEMALE
NBR. OF ANTLER POINTS: L: 3 R: 3
HARVEST REPORT CONFIRMATION NBR: 1234

COUNTERSIGNED BY: [Signature]
AGENCY/TITLE: [Signature]
DATE: 8/20/16

End of Document D-0016218800-6

STAY CONNECTED TO CDFW

Having your e-mail address and mobile number will enable the CDFW to send you information you can use, such as license sales dates, harvest report card deadlines and other hunting information as it becomes available. When purchasing a license from a license agent or online, you may update your profile by providing your e-mail address and mobile number.

Fish and Game Code, Section 1050.6, and California Government Code, Section 11015.5, prohibit the CDFW from selling or sharing your personal information with any third party.

Harvest Report Card

16 DR
STATE OF CALIFORNIA
DEPARTMENT OF FISH AND WILDLIFE
DEER TAG
See Regulations for Season Dates

[Barcode]

D-0016218800-6
GO ID: 1047725804
STATE ID: H000**** CA
JOE HUNTER
1234 HUNTING AVE
SACRAMENTO, CA 95834
SEX: M HAIR: Blonde EYES: Blue
HT: 6-00 WT: 200 DOB: 01/01/1980
Resident: I have resided in California continuously for the past 6 months

Doc No: D-0016218800-6 Outlet No: 310003-001
Trans: 00000012271633 3/24/2016 9:09:52 AM
015591209

Item	Fee*
1st Deer Tag - Resident	\$29.61
Total: \$29.61	

*Includes any applicable application fees, agent handling fees, and license buyer surcharge

A
ZONE A ARCHERY AND GENERAL SEASONS - BUCK
LEAD AMMO RESTRICTIONS - SEE REGULATIONS FOR AFFECTED CONDOR AREA.

TAG MUST BE IN IMMEDIATE POSSESSION WHILE HUNTING

INSTRUCTIONS FOR SUCCESSFUL HUNTERS:
(1) Upon the harvesting of any deer, the hunter shall immediately fill out all information requested on the harvest report card and tag completely, legibly, and permanently and punch out holes for the month and date of the kill.
(2) The deer license tag shall then be immediately attached to the antlers of an antlered deer or to the ear of any other deer and kept attached during the open season and for 15 days thereafter.
(3) Hunter must have tag countersigned, pursuant to FGC 4341, by nearest validating officer (CDFW employee, forest ranger, peace officer or others listed in Sec. 709.9, Title 14, CCR).
(4) Hunter must submit Harvest Report Card within 30 days of killing deer.

REPORTING REQUIREMENTS/INSTRUCTIONS:
SUCCESSFUL TAG HOLDERS MUST SUBMIT A HARVEST REPORT WITHIN 30 DAYS OF TAKING THE ANIMAL.
UNSUCCESSFUL TAG HOLDERS AND HUNTERS WHO DID NOT HUNT MUST ANSWER THE APPLICABLE QUESTIONS ON THE HARVEST REPORT AND SUBMIT IT BY JANUARY 31.

HARVEST REPORTS CAN BE SUBMITTED ONLINE AT: wildlife.ca.gov/Licensing
A confirmation number will be provided for online reporting. Hunter must fill out the Hunter's and Deer Harvest Report Card. HUNTERS MAY ALSO MAIL THEIR HARVEST REPORTS TO: CDFW Wildlife Branch, P.O. Box 944209, Sacramento, CA 95829-9002.

NON-REPORTING PENALTY:
Hunters who do not submit a harvest report by January 31 will be assessed a non-reporting fee of \$21.60 when purchasing a deer tag or deer tag drawing application at the following license year.

DO YOU HUNT DEER: YES NO
NUMBER OF DAYS HUNTING DEER: 3
WERE YOU SUCCESSFUL: YES NO

HARVEST INFORMATION
Doc No: D-0016218800-6
DATE: 8/20/16 TIME: 7:00 AM PM
ZONE OF KILL: A - North Unit A - South Unit
LOCALITY OF KILL: Knoxville Wildlife Area
(Distance and Direction from Nearest Landmark)

COUNTY OF KILL: Lake County
KILLED ON: PRIVATE LAND PUBLIC LAND

METHOD OF TAKE:
 ARCHERY
 CROSSBOW
 DISABLED ARCHER PERMIT/ARCHERY-CROSSBOW
 MUZZLELOADING RIFLE
 PISTOL/REVOLVER
 RIFLE
 SHOTGUN

ANIMAL GENDER: MALE FEMALE
NBR. OF ANTLER POINTS: L: 3 R: 3
HARVEST REPORT CONFIRMATION NBR: 1234

Cut Along Line To Separate Tag (below) from Harvest Report Card (above) when Attaching Tag To Animal

Persons Authorized to Validate or Countersign Deer and Elk Tags (CCR T14-708.6(c))*

STATE

- Fish and Game Commissioners
- Employees of the Department of Fish and Wildlife, including Certified Hunter Education Instructors
- Employees of the California Department of Forestry and Fire Protection
- Supervising Plant Quarantine Inspectors
- Junior, Intermediate and Senior Plant Quarantine Inspectors

FEDERAL

- Employees of the Bureau of Land Management
- Employees of the United States Forest Service
- Employees of the United States Fish & Wildlife Service
- All Uniformed Personnel of the National Park Service
- Commanding Officers of any United States military installation or their designated personnel for deer taken on their reservation
- Postmasters & Post Office Station or Branch Manager for deer brought to their post office

MISCELLANEOUS

- County firemen at and above the class of foreman for deer brought into their station
- Judges or Justices of all state and United States courts
- Notaries Public
- Peace Officers (salaried & non-salaried)
- Officers authorized to administer oaths
- Owners, corporate officers, managers or operators of lockers or cold storage plants for deer brought to their place of business

* No person may validate or countersign his/her own deer tag or elk tag. CCR T14-708.6(b).

GENERAL INFORMATION

For complete regulations, please visit the Fish and Game Commission website at www.fgc.ca.gov

HUNTING LICENSE REQUIREMENTS

First time applicants applying for a hunting license through the CDFW's ALDS must present one of the following as evidence of hunter education when applying for a California hunting license:

- An annual California hunting license issued in any prior year;
- A Two-Day Nonresident California Hunting License issued after the 1999/2000 license year;
- A California certificate of hunter education completion or equivalency with a unique number imprinted on it ex: (AA00000) or a California hunter education certificate with no unique number imprinted and a California hunter education validation stamp affixed;
- A certificate of successful completion of a California-approved hunter education course from any state or province; or
- A current hunting license or a hunting license issued in either of the two previous years from any state, province, European Union country or South Africa.

Applicants that have previously purchased a hunting license through CDFW's ALDS will already have the required proof of hunter education evidence in their customer profile. To ensure the appropriate customer profile is retrieved at a license agent, the CDFW recommends hunters provide the license agent with a previously issued ALDS license.

VALIDATION OF LICENSE

To be valid, every California hunting license shall be signed by the licensee. Proof of identification must be presented at the time of initial purchase. In addition, the license must contain the following information about the licensee: true name, residence address, date of birth, height, weight, color of eyes, color of hair, and sex.

Acceptable proof of identification:

- Any license document or GO ID number previously issued via ALDS
- A valid driver's license or identification card issued to him or her by the Department of Motor Vehicles or by the entity issuing driver's licenses from the licensee's state of domicile
- US Birth Certificate
- US Certificate or Report of Birth Abroad
- Tribal Identification Card, as defined by each sovereign tribal nation
- Birth Certificate or passport issued from a US Territory
- US Passport
- US Military Identification Cards (Active or reserve duty, dependent, retired member, discharged from service, medical/religious personnel)
- Certificate of Naturalization or Citizenship
- A foreign government-issued photo identification

Applicants who are less than 18 years of age may provide any form of identification previously described or a guardian's identification (parent or legal guardian identification listed).

LICENSE PROVISIONS

A valid California hunting license is required to take any bird or mammal. Hunters must carry licenses and be prepared to show them upon request to any peace officer. Guns and other equipment used in hunting must be shown upon request.

JUNIOR HUNTING LICENSE ELIGIBILITY

To qualify for a junior hunting license, a hunter must be less than 18 years of age as of July 1, of the license year for which they are applying.

REDUCED FEE HUNTING LICENSES

The CDFW offers reduced fee hunting licenses to the following qualifying applicants. Hunting tags and validations must be purchased at the full fee. Contact your nearest CDFW license sales office for an application or visit our web site at www.wildlife.ca.gov/Licensing/Hunting.

Disabled Veterans

Honorably discharged disabled veterans (resident or nonresident) with a 50 percent or greater service-connected disability are eligible for a reduced fee hunting license. First time applicants must provide certification from the United States Department of Veterans' Affairs and evidence of meeting California's hunter education requirements to a CDFW license sales office. After the initial qualification is approved and the license is issued by a CDFW license sales office, future licenses may be purchased at any CDFW license sales office, license agent, online or by telephone sales.

Recovering Service Members

Recovering service members are entitled to a reduced fee hunting license while undergoing medical treatment, recuperation, or therapy, and are in an outpatient status while recovering from a serious injury or illness related to the member's military service. Applicants must submit a letter from their commanding officer or military medical doctor stating they are a recovering service member and evidence of meeting California's hunter education requirements to a CDFW license sales office. After the initial qualification is approved and the license is issued by a CDFW license sales office, future licenses may be purchased at any CDFW license sales office, license agent, online or by telephone sales.

UPLAND GAME BIRD AND CALIFORNIA

DUCK VALIDATION

Any person (except junior hunters) must have an Upland Game Bird Validation when hunting pheasant, dove, turkey, quail, grouse, ptarmigan, snipe, band-tailed pigeon, partridge or chukar. A California Duck Validation authorizes any person to hunt waterfowl in California (along with the Federal Duck Stamp and free HIP Validation). CDFW knows that many hunters collect the physical stamps, hunters who purchase these validations can claim their collectible stamp online at the address printed on their 2016 hunting licenses. Stamps will be mailed at the end of the license year (after July 1, 2017).

HARVEST INFORMATION PROGRAM (HIP) VALIDATION REQUIREMENT

If you plan to hunt migratory game birds in 2016/2017 (ducks, geese, coots, dove, band-tailed pigeon, snipe, gallinules or black brant) you must complete a Harvest Information Program (HIP) survey. To take the survey you must request a HIP validation at any CDFW license sales office, license agent, or online. There is no charge for the HIP validation. Hunters may be cited for hunting migratory game birds without a HIP validation in their immediate possession.

DUPLICATE LICENSES

Your customer record contains a history of all your license purchases. If you lose your license or additional validations, you can go to any CDFW license sales office, license agent, online or by telephone sales and purchase a duplicate license and validations.

DISABLED ENTITLEMENTS

The CDFW offers the following free disabled entitlements to any resident or nonresident hunter that meets the qualifications. These entitlements must be certified by a licensed physician and submitted to the CDFW's License and Revenue Branch. Hunters that qualify for these entitlements must also have a valid California hunting license in possession while hunting.

Disabled Archer Permit

A disabled archer permit is available to any hunter who has permanent loss, significant limitation, or diagnosed disease or disorder, which substantially impairs one or both upper extremities preventing the hunter from drawing and holding of a bow in a firing position. The Disabled Archer Permit authorizes the disabled archer to use a crossbow or device which holds a string and arrow in the firing position, to assist in the taking of birds and mammals under the conditions of an archery tag or during archery season.

Certification from a licensed physician is required. If the physician indicates on the initial application that the disability is permanent, hunters may renew the permit every year at any CDFW license sales office, license agent, online or by telephone sales.

If the disability is temporary, the physician is required to enter the end date of the disability on the application. Temporary permits may be renewed at any CDFW's license sales office, license agent, online or by telephone sales every year until the temporary disability end date; once the end date has passed re-certification is required.

Disabled Muzzleloader Scope Permit

A disabled muzzleloader scope permit is available to any visually impaired hunter having a permanent loss, significant limitation, or diagnosed disease or disorder, which substantially impairs the vision of a hunter, preventing the hunter from viewing and aligning the sights of a muzzleloader rifle with the target in order to hunt deer. The Disabled Muzzleloader Scope Permit allows the hunter to use a 1X scope on a muzzleloader rifle while hunting under the conditions of a muzzleloader deer hunt tag. Hunters must renew the permit each license year, but hunters may

provide a copy of their previously issued permit to the CDFW's License and Revenue Branch to renew annually.

Mobility Impaired Disabled Persons Motor Vehicle Hunting License

A Mobility Impaired Disabled Persons Motor Vehicle Hunting License is available for any mobility impaired disabled hunter who must use a motor vehicle to pursue game. The Mobility Impaired Disabled Persons Motor Vehicle Hunting License allows a hunter to discharge a firearm from a vehicle that is stopped and its engine turned off. To qualify a person must be either permanently or fully confined to a wheel chair, a single or double amputee above the knee or double amputee below the knee, or depend upon the aid of a walker, crutches, etc. to walk. Certification from a licensed physician is required. The license is only available from the CDFW's License and Revenue Branch.

HUNTER EDUCATION CLASSES

Classes include instruction in firearms safety and handling, sportsmanship and ethics, wildlife management and conservation, archery, black powder, wildlife identification, game care, first aid, and survival. Classes are offered in two formats: 1) Traditional (minimum of ten hours of classroom, homework, and field instruction) or 2) Online course and Follow-up class. For more information or to register for a class, visit www.wildlife.ca.gov/Hunter-Education.

BOWHUNTER EDUCATION CLASS

Although bowhunter education training is not required in California, many states do require it for all bowhunters. CDFW's bowhunter education program meets the requirements of all states. For more information or to register for a class, visit <https://www.wildlife.ca.gov/Hunter-Education>

HUNTER EDUCATION EQUIVALENCY EXAMS

Hunter education equivalency exams are given by appointment only at CDFW Regional Offices for a fee. In some states, the California equivalency certificate may not be accepted as evidence of hunter education. For more information on the hunter education equivalency exam, contact your nearest CDFW Regional Office.

DUPLICATE HUNTER EDUCATION CERTIFICATES

Duplicate hunter education certificates can be issued to any person who completed and passed a hunter education class. If the class was completed prior to 1989, CDFW does not have records before this date; the hunter should contact the original instructor, club, or organization where the course was taught to obtain a duplicate. If the hunter is unable to obtain a duplicate through these means, they will have to repeat the course. Visit the hunter education web page at www.wildlife.ca.gov/Hunter-Education for more information.



2016 BIG GAME DRAWING WORKSHEET FOR APPLYING AT A LICENSE AGENT

DO NOT MAIL OR FAX WORKSHEET TO THE DEPARTMENT OF FISH AND WILDLIFE

This worksheet is to assist the sales clerk in entering your hunt choices. Select your hunt choices prior to visiting a license agent. All sales transactions for the Big Game Drawing must be completed before midnight on June 2, 2016. You may apply at any CDFW license sales office, license agent, online at www.ca.wildlifelicense.com/InternetSales or by telephone sales at (800) 565-1458. **Mailed or faxed worksheets will not be accepted at a CDFW office.**

NAME _____

GO ID _____

BIG GAME DRAWING

Enter party leader's party identification number below only if you are joining an existing party.

First-Deer Tag Drawing Application:

To enter the Big Game Drawing for a premium deer hunt tag or preference point only

Party Leader's
Party Identification Number _____

1st Choice

2nd Choice

3rd Choice

Second-Deer Tag Drawing Application:

Use only for junior hunters applying for Apprentice Deer Hunts, who did not apply for Apprentice Deer Hunts on their First-Deer Tag Application

Party Leader's
Party Identification Number _____

1st Choice

2nd Choice

3rd Choice

Elk Tag Drawing Application:

Party Leader's
Party Identification Number _____

Hunt Choice

Antelope Tag Drawing Application:

Party Leader's
Party Identification Number _____

Hunt Choice

Bighorn Sheep Tag Drawing Application:

Party not allowed

Hunt Choice

FUND-RAISING RANDOM DRAWING TAGS (no hunting license is required to apply- preference points do not apply - no limit on number of applications – winners will be awarded a tag at no additional cost)

Open Zone Deer Tag Number of applications _____

Northeastern California Pronghorn Antelope Tag Number of applications _____

Grizzly Island Elk Tag Number of applications _____

Old Dad and Kelso Peak Desert Bighorn Sheep Tag Number of applications _____

VERIFY THAT YOUR HUNT CHOICES ARE CORRECT ON YOUR DRAWING RECEIPT BEFORE LEAVING THE LICENSE AGENT. NOTE: Do not leave this worksheet with the sales clerk.

DEER HUNTING

DEER TAGS AND GENERAL INFORMATION

In addition to a valid California hunting license, deer tags are also required and must be in possession when taking deer. Hunters may obtain two deer tags per license year. Applicants for deer tags must be at least 12 years of age on or before July 1, of the license year for which they are applying or at the time of application if they are applying after July 1. A First-Deer Tag Drawing Application or First-Deer Tag must be purchased before or at the same time as a Second-Deer Tag Drawing Application (Junior Hunters only) or Second-Deer Tag.

License and Tag Privileges Can Be Revoked

It is illegal to purchase more than one First-Deer Tag Drawing Application/First-Deer Tag and one Second-Deer Tag Drawing Application/Second-Deer Tag in the same license year. Persons convicted of a deer violation during the 2015/2016 license year may not apply for deer tags in 2016/2017.

The Fish and Game Code provides that the Fish and Game Commission shall revoke the hunting privileges of any person who is convicted of three violations of the state's hunting laws or regulations within any five-year period. (FGC 12155, CCR T-14 745.5).

DEER TAG INFORMATION

Applicants may purchase deer tags or apply in the annual Big Game Drawing at any CDFW license sales office, license agent, online at www.ca.wildlifelicenses.com/InternetSales or by telephone sales at (800) 565-1458. Allow 15 days to receive license items purchased online or by telephone.

Premium deer tags are issued by drawing. Restricted and unrestricted deer tags are issued upon request until the tag quota for the hunt is filled.



Jessica Simons

HUNT TAG DESCRIPTIONS

A, B, and D Zone Hunt Tags

These tags allow hunting during the archery season with archery equipment only and during the general season with a muzzleloading or centerfire rifle, shotgun, authorized pistol or revolver, crossbow, or bow. Tags are valid for a specific zone of issuance except:

A zone tag is valid in both A North and A South;
B Zone Deer Tags are valid in any B zone;
D3-5 Deer Tags are valid in zones D3, D4, and D5; and
D11, D13, or D15 tags may be used in any of these three zones.

C Zone Hunt Tag

A C zone tag is valid in zones C1, C2, C3, and C4 during the general season only, using a muzzleloading or centerfire rifle, shotgun, authorized pistol or revolver, crossbow, or bow. To hunt with archery equipment only during the archery season in any C zone you must apply in the Big Game Drawing for an A1 Area-Specific Archery Hunt tag.

X Zone Hunt Tags

These tags allow hunting during the general season only, in a specific zone using a muzzleloading or centerfire rifle, shotgun, authorized pistol or revolver, crossbow, or bow.

Archery-Only (AO) Hunt Tag

The AO (Archery-Only) tag allows hunting with archery equipment only during the archery and general seasons in A, B, or D zones and Hunt G10 (military only). To hunt during an X zone archery season, you must have an Area-Specific Archery Hunt tag for the appropriate zone. You may not possess a firearm or crossbow when hunting under the authority of an Archery-Only deer tag except as otherwise provided.

Apprentice Hunt Tags: Applicants must be less than 18 years of age as of July 1, of the license year for which they are applying, and must possess a valid 2016/2017 California Junior Hunting License. See page 34 for more information on Apprentice Deer Hunts. Junior hunters receiving Apprentice Deer Hunt tags must be accompanied by an adult 18 years of age or older while hunting.

Area-Specific Archery Hunt Tags: These tags allow archery hunting in designated areas throughout the state, including X zones.

Military Lands Hunts: G8, J10 and A33 (Additional Hunt Deer Tags), are held on military installations and offer limited number of tags for the public. Tags are issued through the CDFW's Big Game Drawing.

Additional Military Lands Hunts, G7 (Beale Air Force Base Either-Sex Hunt), G10 (Camp Pendleton Marine Corp Base Either Sex Hunt), and G11 (Vandenberg Air Force Base Either-Sex Hunt) are for military personnel only. Military personnel must contact the base directly for information on application procedures. Hunters interested in the G7 hunt tag may contact the Beale AFB Natural Resources Office at (530) 634-2738. For information on the G10 hunt tag contact the Camp Pendleton Marine Corp Base at (760) 725-3360 and for the G11 hunt tag, contact the Vandenberg Conservation Law Enforcement Office at (805) 606-6804.

Deer Tag Exchanges

Premium deer tags cannot be exchanged. Non-Premium deer tags may be exchanged if all of the following conditions are met:

- The earliest season (either archery or general) for the tag being exchanged has not yet opened;
- The tag quota for the tag being exchanged has not filled;
- Tags are still available for the zone being requested; and
- The exchange fee of \$10.04 for the exchange tag accompanies your request.

Deer tag exchanges are only processed at CDFW license sales offices (CCR T14-708.4).

Deer Tag Refunds

Deer tag fees are nonrefundable. Deer Tag Drawing Application fees are nonrefundable once the deer tag application has been entered into the Big Game Drawing or a deer tag has been issued regardless of closures of any zone or hunt due to fire, weather or other natural disasters.

DEER DEFINITIONS

Antlerless Deer: Female deer, fawns of either sex other than spotted fawns, and male deer with an unbranched antler on one or both sides which is not more than three inches in length (CCR T14-351(b)).

Either-sex Deer: Antlerless deer, or legal bucks that have two or more points in the upper two-thirds of either antler (CCR T14-351(c)).

Forked-horn Buck: A male deer having a branched antler on either side with the branch in the upper two-thirds of the antler. Eyeguards or other bony projections on the lower one-third of the antler shall not be considered as points or branches (CCR T14-351(a)).

Spike Buck Deer: A male deer with unbranched antlers on both sides which are more than 3 inches in length (FGC 204(d)).

DEER TAG CLASSIFICATIONS

Deer tags are issued for a specific hunt. Each hunt has a tag quota - the total number of tags that can be issued. Deer hunts are categorized into three different classifications (premium, restricted and unrestricted) based on the prior year's demand for the tag. Hunt classification determines tag issuance method and other rules as follows:

PREMIUM DEER HUNTS are any hunt where the quota filled on or before the first business day after July 1, of the previous year. Hunters may only obtain one premium hunt tag per license year. To apply for a premium deer hunt tag, hunters must apply in the Big Game Drawing using a First-Deer Tag Drawing Application. Except junior hunters who may also apply for premium Apprentice Hunts using a Second-Deer Tag Drawing Application.

Premium Deer Tags for 2016 are:

General Zone Hunts: C, D9, D12, and D17;

X Zone Hunts: X1, X2, X3A, X3B, X4, X5A, X5B, X6A, X6B, X7A, X7B, X8, X9A, X9B, X9C, X10 and X12;

General Method Hunts: G1, G3, G6, G8, G12, G13, G19, G21, G37, G38 and G39;

Muzzleloader Hunts: M3, M4, M5, M6, M7, M8, M9, M11, MA1 and MA3;

Area-Specific Archery Hunts: A1, A3, A4, A5, A6, A7, A8, A9, A11, A12, A13, A14, A15, A16, A17, A20, A21, A24, A25, A26, A27, A30, A31 and A33;

Apprentice Hunts: J1, J3, J4, J8, J9, J10, J11, J12, J13, J14, J15, J16, J17, J18, J19, J20 and J21.

RESTRICTED DEER HUNTS are any hunt that filled on or before the first business day after August 1 of the previous year. Restricted deer hunt tags may be issued upon the purchase of a First-Deer Tag. Second-Deer Tag applicants may also obtain a restricted deer hunt tag at any time, if you do not have a pending drawing application, have not been issued a premium deer hunt tag or restricted deer hunt tag as a First-Deer Tag. Restricted tags are issued upon request until the tag quota for the hunt is filled.

Restricted Deer Tags for 2016 are:

Area-Specific Archery Hunt: A18 (in 2015, A18 was an unrestricted tag), **A19, A22** (in 2015, A22 was a premium tag).

General Hunt Zones: D6 (in 2015, D6 was a premium tag), **D16.**

UNRESTRICTED DEER HUNTS are any hunt that did not fill on or before the first business day after August 1, in the previous year. Unrestricted deer hunt tags are issued upon the purchase of either a First-Deer Tag or Second-Deer Tag.

Unrestricted Deer Tags for 2016 are:

Archery Only Hunt: AO

General Hunt Zones: A, B, D3-5, D7 (in 2015, D7 was a restricted tag), **D8, D10, D11, D13, D14, D15 and D19;**

Area-Specific Archery Hunts: A32.

FIRST DEER TAG DRAWING APPLICATION

A First-Deer Tag Drawing Application may only be used to apply for the following hunts:

- First Choice – Premium Deer Hunts or **PD** (Point Deer) – The preference point code may be used as the first choice to obtain a preference point without competing in the first choice round of the drawing.
- Second and Third Choice – Second and third hunt choices are optional and may be a premium deer, restricted deer or unrestricted deer hunt tag.

SECOND DEER TAG DRAWING APPLICATION

A Second-Deer Tag Drawing Application may **ONLY** be used by junior hunters to apply for Apprentice Hunts, and only if they have not applied for Apprentice Deer Hunts on their First-Deer Tag Drawing Application.

Second-Deer Tag Drawing Application hunt choices are limited as follows:

- First Choice – Must be an Apprentice Deer Hunt or **PD** (Point Deer) – The preference point code may be used as the first choice to obtain a preference point without competing in the first choice round of the drawing.
- Second and Third Choice – Second and third choice hunts are optional and may be another Apprentice Deer Hunt or unrestricted deer hunt tag. Junior hunters may select

a restricted deer hunt as their second or third tag choice **ONLY** if they were issued an unrestricted deer tag as their First-Deer Tag or not pending a First-Deer Tag Drawing Application.

FIRST DEER TAG

A First-Deer Tag may be used to obtain the following:

- Restricted Deer Hunt Tags
- Unrestricted Deer Hunt Tags
- Leftover Premium Deer Hunt Tags issued on July 2, 2016 (July 2nd, is a Saturday, CDFW License Sales offices will be closed)

If any premium deer hunt tags remain after the Big Game Drawing, First-Deer Tag applicants may apply for any leftover premium deer hunt tags starting at 8:00 a.m. on July 2, 2016. In 2015, A22 and D6 tags were left over from the drawing.

SECOND DEER TAG

A Second-Deer Tag may be used to obtain the following:

- Unrestricted Deer Hunt Tags
- Restricted Deer Hunt Tags
- Leftover Premium Deer Hunt Tags issued on August 2, 2016.

Second-Deer Tag applicants may obtain any restricted deer hunt tag at any time if they do not have a pending First-Deer Tag Drawing Application or have not been issued a premium or restricted deer tag as a First-Deer Tag.

Starting at 8:00 am on August 2, 2016 all Second-Deer Tag applicants may apply for any remaining deer tag regardless if you have been issued a premium or restricted deer tag already.

2015 DEER TAGS LEFT OVER FROM THE BIG GAME DRAWING:

A22 - The A22 tag quota filled on July 29, 2015 and will be classified as a restricted deer tag for the 2016 deer season.

D6 - The D6 tag quota filled on August 3, 2015 and will be classified as a restricted deer tag for the 2016 deer season.

BIG GAME DRAWING INFORMATION

All premium deer hunt tags and elk, antelope and bighorn sheep tags are distributed through the CDFW Big Game Drawing.

Instructions for applying in the 2016 Big Game Drawing for your elk, antelope, and bighorn sheep tags can be found on pages 40.

For the 2016 Big Game Drawing, 14 is the maximum number of preference points for any species a hunter can have. The CDFW started tracking preference points in 2002. To look up your preference points totals log on to your customer profile at www.ca.wildlifelicenses.com/InternetSales.

APPLYING IN THE BIG GAME DRAWING

Applicants can apply for the Big Game Drawing at any CDFW license sales office, license agent, online at www.ca.wildlifelicenses.com/InternetSales or by telephone sales at (800) 565-1458. All transactions for Big Game Drawing entries must be completed before midnight on June 2, 2016. Applicants applying for preference points only must also submit their applications by the same date and time.

You will need to purchase a California hunting license and the appropriate Big Game Drawing Tag Applications:

- First-Deer Tag Application (junior hunters may apply for Apprentice Deer Hunts on a Second-Deer Tag Drawing Application). See page 30 for deer tag hunt codes.
 - Elk Tag Drawing Application, see page 47 for elk hunt codes.
 - Pronghorn Antelope Tag Drawing Application, see page 52 for pronghorn antelope hunt codes.
 - Bighorn Sheep Tag Drawing Application, see page 53 for bighorn sheep hunt codes.
 - Fund-raising Drawing Application – Open Zone Deer tag, Grizzly Island, Northeastern California Antelope tag and Desert Bighorn Sheep tag, see page 11.
1. Retrieving Your Customer Record
 - a. If applying at a CDFW license sales office or a license agent provide a previous ALDS issued license for the agent to scan.
 - b. If applying online or by telephone sales, use the GO ID (printed above your 'STATE ID') from a previously issued ALDS license to retrieve your customer record. See instructions on page 21 for more information on applying online.

2. Applying for Another Person
If you are applying for someone else or party members, bring their previously issued ALDS license or their identification number and date of birth.
3. Proof of Hunter Education Requirement
Hunter education information must already be on file in your ALDS profile. For new applicants, please bring your required proof of hunter education with you to the license agent. **NOTE:** Hunters who have purchased hunting items via ALDS already have hunter education on file.
4. Items to Purchase
 - a. Purchase your 2016/2017 California hunting license.
 - b. Provide the sales clerk the 2016 hunting items you would like to apply for (see the list of items from the previous column) and the hunt code for each tag application for which you want to apply. **NOTE:** For deer, you should confirm the correct order of your hunt choices.

APPLYING AS A PARTY

The maximum number of party members for deer is six (6). For elk and antelope, only residents may apply as a party of two. Hunters cannot apply as a party for bighorn sheep. You will receive a different Drawing Receipt and Party Number for each species for which you are applying. Make sure you are giving the correct Party Number from each Drawing Receipt to the correct hunting party.

When applying for a deer, elk, or antelope drawing tag application you will be prompted as to whether you are:

- a. Applying alone or creating a new party (party leader).
- b. Joining an existing party.

The first member of the party to apply should indicate they are applying as the leader. They will be prompted for their hunt choice(s) and issued a Party Number (printed on their Drawing Receipt at the end of the transaction). **NOTE:** Every applicant will receive a Party Number printed on their Drawing Receipt.

The party leader must provide the Party Number to additional members to 'authorize' them to join the party. **NOTE:** CDFW license sales staff and license agents do not have access to a party leader's Party Number.

When other party members apply they must indicate that they are joining an existing party, and provide the Party Number to the sales clerk (or enter it themselves if

applying online). **NOTE:** If other members of the party are applying in the same sales transaction, they will not need the party number and can just indicate to the sales clerk that they are joining that person's party.

When the Party Number is entered in the drawing application screen it will bring up the hunting party and hunt choice information. The sales clerk should confirm that this is the correct party and hunt choice with the purchaser. If this is not the correct party, the sales clerk can cancel and re-enter the Party Number. If correct, the sales clerk can confirm, and this will link the new member to the party. (**NOTE:** If applying online, the confirmation screen will display for the customer with the options to cancel or confirm).

Hunters joining an existing party will be assigned the same tag choices in the same order as the party leader and all party members will be linked in the drawing together.

Party applications can be made up of transactions submitted in the same sales transaction or through several transactions. In addition, hunters can submit their drawing applications at any CDFW license sales offices, license agents, online, or by telephone sales.

IMPORTANT: Applicants will receive a Drawing Receipt for each species for which they are applying. If you were issued a first deer tag instead of a Drawing Receipt, at the license agent, you were not entered into the Big Game Drawing. You will not earn a preference point and will not be drawn for a premium deer tag.

Check Your Drawing Receipt Carefully!

Hunters should verify the information on their Drawing Receipt before leaving the sales counter. The receipt will include the applicant's name, hunt choice(s), accumulated preference points, and a Party Number. If any of the information is incorrect, the sales clerk must cancel the Drawing Receipt document and 're-sell' the application with the correct information.

License agents have only four hours to cancel a sale. If the transaction has exceeded the four hour limit when the

discrepancy is found, the applicant must contact CDFW's License and Revenue Branch prior to the June 2nd deadline at (916) 419-7573, or e-mail LRB@wildlife.ca.gov.

APPLYING FOR THE BIG GAME DRAWING ONLINE

Apply early! Don't be left out! The deadline to apply is midnight on June 2, 2016.

You must have proof of hunter education on file to purchase hunting items online. If you do not have hunter education on file, you must provide proof of hunter education to a license agent or a CDFW license sales office. You may also contact CDFW by fax at (916) 419-7587 or e-mail LRB@wildlife.ca.gov and provide proof of hunter education and GO ID, or your personal identification number. After your hunter education is updated in ALDS, you will be able to purchase hunting licenses now and in the future.

How to Apply Online

1. Using your last name, date of birth, and ID number (GO ID, CDL, or other ID used to create profile) log into your profile www.ca.wildlifelicense.com/InternetSales and click on the "Purchase Licenses" link at the top of the page.
2. From the Menu box on the left side of the screen, select 2016 Hunting.
3. Add the 2016 hunting license to your cart.
4. Scroll down to the Drawings section. In the Drawings section,
 - Click on "Add to Cart" to select the desired Drawing Application.
 - Note: Adult hunters MUST use a First Deer Tag Drawing Application when applying for deer in the Big Game Drawing. The item 'First Deer Tag' (in the TAGS section) cannot be used to apply for the Big Game Drawing for deer.
 - If you are joining an existing hunting party, select "Join Party". You will need the Party Number of the party you wish to join. See page 20 for more information on applying as a party.
 - If you are applying alone, or if you are the first person in your party to apply, select "Apply Alone or Create New Party."
 - Enter your hunt choices in the boxes provided.
 - Click "Submit" to complete hunt choice entry.
5. Repeat step 4, for each species for which you are applying.

6. Add any other items you wish to purchase to the cart.
7. Select "View Cart" to review the items you've selected and confirm your tag choices.
8. Click on "Continue to Checkout" to start the checkout process and enter your payment information. Enter your email address if you want confirmation of your purchase emailed to you.
9. Check the box to certify that you are 18 years of age and authorize the purchase. The transaction will not be processed if this box is not checked, which means you will not be entered in the Big Game Drawing.
10. Select "Complete Transaction." The "Transaction Complete" page will appear, stating that your order has been received and processed. Click on "Download Receipt/Licenses" so you may print your drawing receipts for your record.

For more information contact the CDFW's Internet Sales Help Desk at (916) 928 – 6882 or email InternetSales@wildlife.ca.gov.

TIP

MOST COMMON MISTAKES WHEN APPLYING FOR THE BIG GAME DRAWING

- Online customers forget to click on the "Submit Payment" button to process the transaction.
- Online customers "Add to Cart" a first deer tag instead of the First Deer Tag Drawing Application located under the "Drawings" list.
- Customers leave the license sales agent with a deer tag instead of a Deer Drawing Receipt. The drawing receipt shows that you have applied in the drawing.
- Customers do not retrieve their existing customer record and create a duplicate record and therefore are not connected to their preference points.
- Customers don't apply early and miss the deadline to apply.

DRAWING RESULTS

The CDFW has 10 business days after the deadline to conduct the drawing. Applicants may look up their drawing results on or around June 17, 2016 by entering their customer information on CDFW's website at www.ca.wildlifelicense.com/InternetSales and click on 'View My Draw Application/Preference Points' at the top of the page. Applicants will also see their new preference point totals by clicking on the tab 'Preference Point.' On the same day, drawing results will be available

by phone during regular business hours from CDFW license sales offices.

NOTIFYING APPLICANTS

Deer tags awarded through the Big Game Drawing will be mailed to successful applicants as soon as possible after the drawing. If you do not receive your tag by July 11, 2016, please contact your nearest CDFW license sales office.

Unsuccessful deer tag applicants will also be mailed unsuccessful deer tag notices by July 2, 2016. Notices will list available deer tags as of the notice date. It is not necessary to have the drawing notice to claim an available tag; hunters may go to any CDFW license sales office, license agent, online or by telephone sales to claim available deer tags. Hunters may use their California hunting license to retrieve their customer record.

Unsuccessful nonresidents may request a refund of the difference between the fees paid for a nonresident and a resident Deer Tag Drawing Application, if the application was submitted and a deer tag was not issued or if a non-resident tag is issued, and all of the following conditions are met:

1. The deer license tag is not a premium tag.
2. The deer license tag is returned prior to the earliest opening date for the hunt.
3. The tag quota has not been filled for the hunt.

Refund requests shall be submitted on or before March 1, each year, to CDFW's License and Revenue Branch, 1740 N. Market Blvd., Sacramento, CA 95834. If the deadline to submit the request for refund falls on a weekend or holiday, requests will be accepted until the close of business on the first state business day following the deadline to submit the request.

Successful elk, antelope and bighorn sheep applicants and alternates should receive their payment notices in the mail by July 2, 2016; unsuccessful applicants will not be notified by mail.

HOW THE DRAWINGS WORK

Under a Modified Preference Point System drawing, tag quotas for each hunt are split into two portions: one portion awarded by preference point drawings; the other portion awarded in Draw-By-Choice drawings. Quota splits vary, depending on the species, total number of available tags, and other special criteria (such as those for Apprentice Hunts, elk, antelope and Bighorn sheep).

CDFW will conduct the drawing within 10 business days of the application deadline.

After the application deadline, when all applicant information has been verified, the computer will:

- Assign each person (or party) a unique random number. Party members receive the same random number as the party leader.
- Determine the preference point value for party applications by averaging all party members' preference points (total preference points of the party divided by the number of party members). Preference point averages are not rounded up or down (CCR T14-708.14(e)).

Steps in the Premium Deer Tag Drawing:

- Sort all applications according to the first choice tag, then preference point totals, and then random number.
- Award tag choices to applicants with the most preference points, in random number order only (starting with the lowest random number to the highest random number). Tags are awarded until the preference quota is met.
- After the preference point round is completed, unsuccessful applicants are resorted by hunt choice and random number order (starting with the lowest random number to the highest random number), and the computer begins awarding tags based on applicant's first-choice without consideration of accumulated preference points, until all draw-by-choice tag quotas fill or until all applicants have been processed.
- All remaining unsuccessful applicants are then sorted by second choice tag, in random number order (starting with the lowest random number to the highest random number) and the computer conducts a second round of drawings for any zones and hunts with tags remaining without consideration of accumulated preference points.
- All remaining unsuccessful applicants are sorted once again by third choice tag, in random number order (starting with the lowest random number to the highest random number), and any remaining tags are awarded without consideration of accumulated points.
- Applicants unsuccessful for any of their hunt choices will be notified of available tags so they may reapply.

Deer tag party applications are not split to meet the tag quota if the number of party members exceeds the number of available tags (CCR T14-708.15(a)(2)). Therefore, when there are fewer tags available than the number of members in a party, the computer bypasses that application and moves on to the next application

where party count is equal to or less than the remaining quota.

Steps in the Elk, Antelope and Bighorn Sheep Tag Drawings:

The draw-by-choice round of the drawing is conducted first then the preference point round.

Alternates are selected in the preference point round and parties may be split when awarding the final tag. The party leader will be awarded the tag and the party member will become the first alternate for that hunt. Applicants drawn as alternates will be awarded unclaimed tags on an individual basis, in the order drawn.

TAG QUOTA SPLITS

Quota splits are established in regulations adopted by the Fish and Game Commission based on CDFW science-based proposals and public input. Please check the Commission's web site at www.fgc.ca.gov for information on how to become involved in the regulation-setting process.

Premium Deer Hunt Tags

- Ninety percent (90%) of the individual zone or hunt tag quota shall be awarded using a Preference Point drawing.
- Ten percent (10%) of the individual zone or hunt tag quota shall be awarded using a Draw-by-Choice drawing.
- For zones or hunts with quotas less than ten (10) tags, one (1) tag shall be awarded using a Draw-by-Choice drawing.

Apprentice Deer Hunt Tags

- Fifty percent (50%) of the hunt tag quota shall be awarded through a Preference Point drawing.
- Fifty percent (50%) of the hunt tag quota shall be awarded through a Draw-By-Choice drawing.

Elk, Antelope and Bighorn Sheep Tags

- For quotas of one (1), the tag shall be awarded using a Draw-By-Choice drawing.
- For quotas of two (2), one (1) tag shall be awarded using a Preference Point drawing, and one (1) tag shall be awarded using a Draw-By-Choice drawing.
- For quotas of three (3), two (2) tags shall be awarded using a Preference Point drawing, and one (1) tag shall be awarded using a Draw-By-Choice drawing.
- For quotas of four (4) or more, seventy-five percent (75%) of the quota shall be awarded using a Preference Point drawing. The remaining portion of the quota shall be awarded using a Draw-By-Choice drawing.

2015 PRELIMINARY DEER HARVEST BY ANTLER CLASS

The following table shows the percentage by antler class of forked-horn or better bucks and total reported buck harvest for zones and hunts as of February 19, 2016 (a).

Zone/Hunt	2 Point Bucks	3 Point Bucks	4 Point Bucks	5 Point or Greater Bucks	Total Reported Buck Harvest
Archery Only Tags (b)	59.7%	26.5%	11.1%	2.8%	533
A Zone (South-110)	66.3%	27.5%	5.4%	0.8%	2,014
A Zone (North-160)	56.8%	31.5%	10.6%	1.1%	2,110
Zone B1	43.7%	36.2%	17.1%	3.0%	1,421
Zone B2	51.2%	32.8%	13.7%	2.3%	1,288
Zone B3	60.7%	31.1%	6.9%	1.3%	305
Zone B4	44.4%	37.8%	16.2%	1.7%	241
Zone B5	52.6%	35.0%	10.5%	1.9%	428
Zone B6	40.7%	36.5%	19.8%	3.0%	526
Zone C1	37.5%	40.2%	18.6%	3.8%	264
Zone C2	44.0%	34.3%	18.1%	3.6%	248
Zone C3	45.1%	36.5%	15.0%	3.4%	293
Zone C4	50.2%	32.7%	15.0%	2.1%	520
Zone D3	52.1%	28.7%	16.3%	2.8%	1,260
Zone D4	47.4%	30.9%	17.5%	4.2%	382
Zone D5	51.9%	30.1%	14.8%	3.2%	1,064
Zone D6	53.8%	29.0%	14.5%	2.6%	613
Zone D7	57.7%	26.8%	13.0%	2.3%	471
Zone D8	57.7%	25.7%	13.4%	3.2%	284
Zone D9	40.6%	41.3%	14.2%	3.9%	155
Zone D10	56.8%	30.9%	12.3%	0.0%	81
Zone D11	77.8%	14.8%	7.4%	0.0%	216
Zone D12	30.0%	36.0%	31.0%	3.0%	100
Zone D13	69.2%	21.2%	8.2%	1.4%	146
Zone D14	60.9%	25.2%	12.4%	1.5%	202
Zone D15	72.4%	17.2%	10.3%	0.0%	29
Zone D16	64.4%	28.4%	6.9%	0.4%	261
Zone D17	38.7%	43.5%	12.9%	4.8%	62
Zone D19	65.8%	30.1%	4.1%	0.0%	73
Zone X1	35.3%	33.59%	24.2%	7.1%	269

Zone/Hunt	2 Point Bucks	3 Point Bucks	4 Point Bucks	5 Point or Greater Bucks	Total Reported Buck Harvest
Zone X2	16.9%	40.8%	31.0%	11.3%	71
Zone X3a	23.3%	29.5%	35.7%	11.6%	129
Zone X3b	44.9%	34.0%	17.2%	3.9%	256
Zone X4	29.2%	37.5%	26.4%	6.9%	144
Zone X5a	21.4%	35.7%	35.7%	7.1%	28
Zone X5b	6.1%	33.30%	36.4%	24.2%	33
Zone X6a	33.6%	31.5%	30.8%	4.2%	143
Zone X6b	25.4%	36.8%	27.2%	10.5%	114
Zone X7a	39.0%	22.0%	24.4%	14.6%	82
Zone X7b	45.8%	32.2%	22.0%	0.0%	59
Zone X8	37.3%	33.9%	28.8%	0.0%	59
Zone X9a	31.8%	38.4%	27.1%	2.7%	255
Zone X9b	41.9%	32.3%	22.63%	3.2%	93
Zone X9c	42.6%	30.9%	23.5%	2.9%	68
Zone X10	41.2%	26.5%	26.5%	5.9%	34
Zone X12	42.4%	35.9%	20.1%	1.6%	184
Hunt A1 (C1)	63.3%	33.3%	3.3%	0.0%	60
Hunt A1 (C2)	40.0%	42.2%	15.6%	2.2%	45
Hunt A1 (C3)	54.3%	32.6%	10.9%	2.2%	46
Hunt A1 (C4)	59.7%	27.1%	11.8%	1.4%	144
Hunt A3	28.9%	34.2%	31.6%	5.30%	38
Hunt A4	0.0%	0.0%	33.3%	66.7%	3
Hunt A5	27.3%	54.5%	18.2%	0.0%	11
Hunt A6	38.9%	55.6%	5.6%	0.0%	18
Hunt A7	40.5%	27.0%	29.7%	2.7%	37
Hunt A8	0.0%	0.0%	100.0%	0.0%	2
Hunt A9	0.0%	0.00%	100.0%	0.0%	1
Hunt A11	37.5%	33.3%	25.0%	4.2%	24
Hunt A12	48.1%	29.6%	18.5%	3.7%	27
Hunt A13	16.7%	25.0%	25.0%	33.3%	12
Hunt A14	50.0%	10.0%	40.0%	0.0%	10
Hunt A15	100%	0.0%	0.0%	0.0%	2
Hunt A16	37.5%	40.6%	12.5%	9.4%	32



Hunter Smith

Zone/Hunt	2 Point Bucks	3 Point Bucks	4 Point Bucks	5 Point or Greater Bucks	Total Reported Buck Harvest
Hunt A17	60.9%	21.7%	17.4%	0.0%	23
Hunt A18	66.7%	25.0%	8.3%	0.0%	12
Hunt A19	0.0%	0.0%	0.0%	100%	2
Hunt A20	39.1%	30.4%	26.1%	4.3%	23
Hunt A21	6.2%	0.0%	81.2%	12.5%	16
Hunt A22	50.0%	45.5%	4.5%	0.0%	22
Hunt A24	66.7%	16.7%	8.3%	0.0%	12
Hunt A25	50.0%	50.0%	0.0%	0.0%	4
Hunt A26	6.2%	50.0%	31.2%	12.5%	16
Hunt A27	0.0%	50.0%	50.0%	0.0%	2
Hunt A30	14.3%	50.0%	35.7%	0.0%	14
Hunt A31	56.5%	17.4%	8.7%	4.3%	23
Hunt A32	60.0%	20.0%	20.0%	0.0%	5
Hunt A33	0.0%	100.0%	0.0%	0.0%	1
Hunt G1	39.0%	40.6%	18.1%	2.3%	525
Hunt G3	6.2%	15.6%	56.2%	21.9%	32
Hunt G6	29.2%	33.3%	33.3%	4.2%	24
Hunt G7	25.0%	25.0%	25.0%	25.0%	4
Hunt G8	No Reported Buck Harvest				0
Hunt G9	No Hunt Held in 2015				0
Hunt G10	48.0%	28.0%	16.0%	4.0%	25
Hunt G11	100%	0.0%	0.0%	0.0%	1

Zone/Hunt	2 Point Bucks	3 Point Bucks	4 Point Bucks	5 Point or Greater Bucks	Total Reported Buck Harvest
Hunt G12	50.0%	33.3%	0.0%	16.7%	6
Hunt G13	No Reported Buck Harvest				
Hunt G19	14.3%	71.4%	0.0%	0.0%	7
Hunt G21	83.3%	16.7%	0.0%	0.0%	6
Hunt G37	9.5%	28.6%	42.9%	19.0%	21
Hunt G38	33.3%	26.7%	36.7%	3.3%	30
Hunt G39	0.0%	0.0%	60.0%	40.0%	5
Hunt J1	0.0%	0.0%	100.0%	0.0%	1
Hunt J3	37.5%	25.0%	37.5%	0.0%	8
Hunt J4	16.7%	58.3%	25.0%	0.0%	12
Hunt J7	0.0%	50%	50.0%	0.0%	2
Hunt J8	0.0%	100.0%	0.0%	0.0%	1
Hunt J9	No Reported Buck Harvest				
Hunt J10	66.7%	20.0%	0.0%	0.0%	15
Hunt J11	33.3%	66.7%	0.0%	0.0%	3
Hunt J12	12.5%	0.0%	50.0%	37.5%	8
Hunt J13	33.3%	66.7%	0.0%	0.0%	3
Hunt J14	66.7%	33.3%	0.0%	0.0%	3
Hunt J15	16.7%	33.3%	16.7%	33.3%	6
Hunt J16	75.0%	0.0%	0.0%	0.0%	4
Hunt J17	No Reported Buck Harvest				
Hunt J18	50.0%	0.0%	0.0%	0.0%	2
Hunt J19	37.5%	25.0%	25.0%	0.0%	8
Hunt J20	42.9%	28.6%	28.6%	0.0%	7
Hunt J21	50.0%	30.0%	20.0%	0.0%	10
Hunt M3	6.2%	31.2%	50.0%	12.5%	16
Hunt M4	50.0%	0.0%	50.0%	0.0%	2
Hunt M5	0.0%	20.0%	60.0%	20.0%	5
Hunt M6	33.3%	33.3%	0.0%	33.3%	3
Hunt M7	42.9%	28.6%	0.0%	0.0%	7
Hunt M8	33.3%	33.3%	22.2%	11.1%	9
Hunt M9	0.0%	9.1%	63.6%	27.3%	11
Hunt M11	44.4%	22.2%	33.3%	0.0%	9
Hunt MA1	88.9%	0.0%	11.1%	0.0%	9
Hunt MA3	66.7%	25.0%	0.0%	8.3%	12
Fund-raising Tags (b)	0.0%	25.0%	0.0%	75.0%	4
Statewide Total:	50.9%	31.5%	14.8%	2.8%	19,164

(a) Table does not include percentages for antlerless, unclassified or spike bucks. Percentages may not total 100%.

(b) Archery Only and Fund-raising Tags are listed separately and are not included within the individual zone or hunt.

2015 DEER TAG DRAWING STATISTICS

HUNT CODE	Quota	PREFERENCE DRAWING							RANDOM (DRAW BY CHOICE) DRAWING						
		Preference Point Quota	Random Quota Quantity	Total 1st Choice Applicants	1st Choice Max Point (13) Applicants	Total Tags Awarded by Preference Drawing	Highest Point Value Awarded Tag	Lowest Point Value Awarded Tag	Total Tags Awarded by Random Drawing	Tags Awarded to 1st Choice Applicants	Tags Awarded to 2nd Choice Applicants	Tags Awarded to 3rd Choice Applicants			
PD	0	0	0	7755	195	0	0	0	0	0	0	0	0	0	0
C, D AND X ZONE HUNTS															
C	8150	7335	815	6072	0	6072	11	0	6072	11	0	2078	0	2078	0
D6	10000	9000	1000	2750	0	2750	11	0	2750	11	0	4761	0	4217	544
D9	2000	1800	200	746	0	746	7	0	746	7	0	1117	0	781	336
D12	950	855	95	1087	0	855	4	0	855	4	0	95	95	0	0
D17	500	450	50	779	0	450	5	0	450	5	0	50	50	0	0
X1	774	697	77	3071	0	697	8.7	1	697	8.7	1	77	77	0	0
X2	159	144	15	1823	2	144	13	6	144	13	6	15	15	0	0
X3A	314	283	31	1771	1	283	13	4	283	13	4	31	31	0	0
X3B	794	715	79	3483	0	715	12	2.5	715	12	2.5	79	79	0	0
X4	434	391	43	1719	0	391	11	2.5	391	11	2.5	43	43	0	0
X5A	75	68	7	796	0	68	11.5	8	68	11.5	8	7	7	0	0
X5B	50	45	5	2161	10	45	13	11	45	13	11	5	5	0	0
X6A	319	288	31	2367	0	288	11	3.5	288	11	3.5	31	31	0	0
X6B	304	274	30	1418	0	274	9	3	274	9	3	30	30	0	0
X7A	224	202	22	1846	0	202	11	4	202	11	4	22	22	0	0
X7B	134	121	13	954	2	121	13	4	121	13	4	13	13	0	0
X8	209	189	20	737	0	189	10	2	189	10	2	20	20	0	0
X9A	650	585	65	4251	0	585	11	3	585	11	3	65	65	0	0
X9B	325	293	32	763	0	293	9	1	293	9	1	32	32	0	0
X9C	325	293	32	623	0	293	11	0	293	11	0	32	32	0	0
X10	400	360	40	321	0	321	8	0	321	8	0	79	79	0	0
X12	680	612	68	4893	0	612	12	4	612	12	4	68	68	0	0

2015 DEER TAG DRAWING STATISTICS

HUNT CODE	Quota	PREFERENCE DRAWING							RANDOM (DRAW BY CHOICE) DRAWING							
		Preference Point Quota	Random Quota Quantity	Total 1st Choice Applicants	1st Choice Max Point (13) Applicants	Total Tags Awarded by Preference Drawing	Highest Point Value Awarded Tag	Lowest Point Value Awarded Tag	Total Tags Awarded by Random Drawing	Tags Awarded to 1st Choice Applicants	Tags Awarded to 2nd Choice Applicants	Tags Awarded to 3rd Choice Applicants				
ADDITIONAL HUNTS																
G1	2710	2439	271	3419	0	2439	10	0	271	271	0	0	0			
G3	35	32	3	4767	588	32	13	13	3	3	0	0	0			
G6	50	45	5	1170	5	45	13	10	5	5	0	0	0			
G8	10	9	1	157	0	9	9	6	1	1	0	0	0			
G12	30	27	3	126	0	27	5	2	3	3	0	0	0			
G13	300	270	30	699	0	270	4	0	30	30	0	0	0			
G19	25	23	2	238	0	23	9	4	2	2	0	0	0			
G21	25	23	2	99	0	23	8	2	2	2	0	0	0			
G37	25	23	2	1808	113	23	13	13	2	2	0	0	0			
G38	300	270	30	321	1	270	13	0	30	30	0	0	0			
G39	5	4	1	601	54	4	13	13	1	1	0	0	0			
APPRENTICE HUNTS																
J1	25	13	12	122	0	13	4	2	12	12	0	0	0			
J3	15	8	7	409	0	8	5	4	7	7	0	0	0			
J4	15	8	7	372	0	8	5	4	7	7	0	0	0			
J7	15	8	7	59	0	8	5	2	7	7	0	0	0			
J8	15	8	7	95	0	8	5	2	7	7	0	0	0			
J9	5	3	2	25	0	3	2	2	2	2	0	0	0			
J10	60	30	30	321	0	30	5	2	30	30	0	0	0			
J11	40	20	20	131	0	20	2	1	20	20	0	0	0			
J12	10	5	5	1236	0	5	5	5	5	5	0	0	0			
J13	40	20	20	72	0	20	2	0	20	20	0	0	0			
J14	30	15	15	70	0	15	2	1	15	15	0	0	0			
J15	10	5	5	326	0	5	5	5	5	5	0	0	0			

2015 DEER TAG DRAWING STATISTICS

HUNT CODE	Quota	PREFERENCE DRAWING							RANDOM (DRAW BY CHOICE) DRAWING			
		Preference Point Quota	Random Quota Quantity	Total 1st Choice Applicants	1st Choice Max Point (13) Applicants	Total Tags Awarded by Preference Drawing	Highest Point Value Awarded Tag	Lowest Point Value Awarded Tag	Total Tags Awarded by Random Drawing	Tags Awarded to 1st Choice Applicants	Tags Awarded to 2nd Choice Applicants	Tags Awarded to 3rd Choice Applicants
J16	75	38	37	125	0	38	3	0	37	37	0	0
J17	25	13	12	60	0	13	3	1	12	12	0	0
J18	75	38	37	154	0	38	3	0	37	37	0	0
J19	25	13	12	319	0	13	4	3	12	12	0	0
J20	20	10	10	92	0	10	4	3	10	10	0	0
J21	50	25	25	276	0	25	5	2	25	25	0	0
MUZZLELOADER HUNTS												
M3	20	18	2	771	70	18	13	13	2	2	0	0
M4	5	4	1	136	0	4	12.5	11	1	1	0	0
M5	5	4	1	115	2	4	13	12	1	1	0	0
M6	80	72	8	87	0	72	3	0	8	8	0	0
M7	150	135	15	188	0	135	11	0	15	15	0	0
M8	20	18	2	85	0	18	12	3	2	2	0	0
M9	15	14	1	796	60	14	13	13	1	1	0	0
M11	20	18	2	598	0	18	12	11	2	2	0	0
MA1	150	135	15	142	0	135	2	0	15	7	8	0
MA3	150	135	15	118	0	118	3	0	32	0	32	0
AREA - SPECIFIC ARCHERY HUNTS												
A1	1945	1751	194	618	0	618	6	0	1327	0	1327	0
A3	115	104	11	270	0	104	6	1	11	11	0	0
A4	10	9	1	43	0	9	5	3	1	1	0	0
A5	35	32	3	95	0	32	4	2	3	3	0	0
A6	70	63	7	215	0	63	9	1	7	7	0	0

2015 DEER TAG DRAWING STATISTICS

HUNT CODE	Quota	PREFERENCE DRAWING										RANDOM (DRAW BY CHOICE) DRAWING			
		Preference Point Quota	Random Quota Quantity	Total 1st Choice Applicants	1st Choice Max Point (13) Applicants	Total Tags Awarded by Preference Drawing	Highest Point Value Awarded Tag	Lowest Point Value Awarded Tag	Total Tags Awarded by Random Drawing	Tags Awarded to 1st Choice Applicants	Tags Awarded to 2nd Choice Applicants	Tags Awarded to 3rd Choice Applicants			
A7	120	108	12	336	0	108	11	1	12	12	0	0			
A8	15	14	1	60	0	14	8	3	1	1	0	0			
A9	5	4	1	78	0	4	9	6	1	1	0	0			
A11	50	45	5	415	0	45	6	3.5	5	5	0	0			
A12	90	81	9	365	0	81	4	1.5	9	9	0	0			
A13	45	41	4	146	0	41	4	2	4	4	0	0			
A14	25	23	2	152	0	23	8	3	2	2	0	0			
A15	40	36	4	60	0	36	3	0	4	4	0	0			
A16	140	126	14	555	0	126	11	2	14	14	0	0			
A17	300	270	30	39	0	39	7	0	261	0	261	0			
A20	100	90	10	380	0	90	5	2	10	10	0	0			
A21	25	23	2	93	0	23	8	4	2	2	0	0			
A22	1000	900	100	515	0	515	7	0	225	0	184	41			
A24	100	90	10	236	0	90	7	1	10	10	0	0			
A25	35	32	3	147	0	32	5	2	3	3	0	0			
A26	30	27	3	636	3	27	13	9	3	3	0	0			
A27	5	4	1	188	0	4	10	10	1	1	0	0			
A30	40	36	4	276	0	36	8	5	4	4	0	0			
A31	1000	900	100	497	0	497	6	0	503	0	392	111			
A33	25	23	2	86	0	23	5	2	2	2	0	0			

2016 PROPOSED* DEER HUNTS

◆ Tag quota filled in the 2015 Big Game Drawing conducted on June 11, 2015. ✖ Tag quota did not fill in 2015.

PREMIUM DEER ZONES and HUNTS Applications for premium deer hunt tags awarded through the Big Game Drawing must be submitted to any CDFW license sales office, license agent, online or telephone sales by midnight on June 2, 2016. You must use your First-Deer Tag Drawing Application to apply for a premium deer hunt tag. Exception: junior hunters may use a Second-Deer Tag Drawing Application to apply for apprentice deer hunts, but only one application may be used to apply for Apprentice Deer Hunts.

	Hunt Code	Hunt Title	2015 Estimated Hunter Success	2015 Tag Quota	Date Quota Filled	2016 Proposed Archery Season Dates	2016 Proposed General Season Dates
	P D	Point Only	N/A	To earn a point, applications must be submitted before midnight on June 2, 2016.			
General Zones	C	General Season Buck in Zones C1-C4	27%	8,150	◆	Hunt A1	See C Zone Below
		C1				See Hunt A1	Sep 17-Oct 16
		C2				See Hunt A1	Sep 17-Oct 23
		C3				See Hunt A1	Sep 17-Oct 23
		C4				See Hunt A1	Sep 17-Oct 2
	D9		15%	2,000	7/2/15	Aug 20-Sep 11	Sep 24-Oct 23
	D12		25 %	950	◆	Oct 1-23	Nov 5-27
D17		26%	500	◆	Sep 3-25	Oct 8-Oct 30	

C Tag is valid in zones C1, C2, C3 and C4 General Seasons only.

C1 Large areas of private land where access is restricted. Some private land owned by timber companies is open to hunting. Most public land is administered by Klamath National Forest (530) 842-6131; fair access. CDFW contact (530) 459-3164.

C2 Good access, mostly public land administered by the Shasta Trinity National Forest (530) 226-2500 and private timber companies open to hunting. CDFW Redding office (530) 225-2300.

C3 Good access in middle and higher elevations on Lassen National Forest (530) 257-2151, and fair access on private timberlands open to

hunting. Lower elevations are largely private property where access is restricted. CDFW Redding office (530) 225-2300.

C4 Good access in eastern portion on public lands administered primarily by the Lassen National Forest (530) 257-2151. Fair access on private timberlands open to public. CDFW contact (530) 225-2300.

D9 Good access on public land. (559) 243-4005.

D12 Extremely dry and hot desert deer zone. Wilderness areas severely restrict vehicle access; 4 X 4 recommended for entire zone

D17 Wilderness Area and Mojave National Preserve restrict vehicle access. (909) 484-0167.

	Hunt Code	Hunt Title	2015 Estimated Hunter Success	2015 Tag Quota	Date Quota Filled	2016 Proposed Archery Season Dates	2016 Proposed General Season Dates
X Zones	X1		55%	775	◆	See Hunt A3	Oct 1-16
	X2		62%	160	◆	See Hunt A4	Oct 1-16
	X3a		57%	315	◆	See Hunt A5	Oct 1-16
	X3b		48%	795	◆	See Hunt A6	Oct 1-16
	X4		50%	435	◆	See Hunt A7	Oct 1-16

X1 Good access on public lands administered by the Klamath National Forest (530) 842-6131, Shasta Trinity National Forest (530) 226-2500, Modoc National Forest (530) 233-5811; no shooting within two-mile radius of Medicine Lake. Some Forest Service Roads may be closed to vehicles during the hunting season. Refer to National Forest maps or contact the Forest Service for details. CDFW contact (530) 459-3164.

X2 Good access on public lands administered by the Klamath National Forest (530) 842-6131, Shasta Trinity National Forest (530) 226-2500, Modoc National Forest (530) 233-5811; no shooting within two-mile radius of Medicine Lake. Some Forest Service Roads may be closed to vehicles during the hunting season. Refer to National Forest maps or contact the Forest Service for details. CDFW contact (530) 459-3164.

X3a Good access on Modoc National Forest (530) 233-5811 and Alturas Field Office BLM lands (530) 233-4666. CDFW contact (530) 233-3581.

X3b Good access to public land. Contact the Modoc National Forest (530) 233-5811, Alturas Field Office (530) 233-4666, or Surprise Field Office BLM property (530) 279-6101 for information. CDFW contact (530) 233-3581.

X4 Good access on public lands, primarily administered by the Lassen National Forest (530) 257-2151. Most private timberland open for public hunting. CDFW contact (530) 254-6808.

	Hunt Code	Hunt Title	2015 Estimated Hunter Success	2015 Tag Quota	Date Quota Filled	2016 Proposed Archery Season Dates	2016 Proposed General Season Dates
X Zones, continued	X5a		55%	75	◆	See Hunt A8	Oct 1-16
	X5b		80%	50	◆	See Hunt A9	Oct 1-16
	X6a		66%	320	◆	See Hunt A11	Oct 1-16
	X6b		52%	305	◆	See Hunt A12	Oct 1-16
	X7a		51%	225	◆	See Hunt A13	Oct 1-16
	X7b		60%	135	◆	See Hunt A14	Oct 1-16
	X8		41%	210	◆	See Hunt A15	Sep 24-Oct 9
	X9a		58%	650	◆	See Hunt A16	Sep 17-Oct 10
	X9b		46%	325	◆	See Hunt A17	Sep 17-Oct 10
	X9c		36%	325	◆	See Hunt A18	Oct 15-Nov 6
	X10		14%	400	◆	See Hunt A19	Sep 24-Oct 9
	X12		41%	680	◆	See Hunt A20	Sep 17-Oct 10

X5a Good access on public lands administered by the Eagle Lake Field Office BLM (530) 257-0456. CDFW contact (530) 254-6808. Four-wheel drive is needed on some roads.

X5b Good access on public lands administered by the Eagle Lake Field Office BLM (530) 257-0456. CDFW contact (530) 254-6808. Four-wheel drive is needed on some roads.

X6a CDFW Lassen County contact (530) 254-6808. CDFW Plumas County contact (916) 358-2900.

X6b Good access on public lands. CDFW Lassen County contact (530) 254-6808. CDFW Plumas County contact (916) 358-2900.

X7a Good access on public lands (916) 358-2900.

X7b Good access on public lands (916) 358-2900.

X8 Good access on public lands except two wilderness areas (916) 358-2900.

X9a Good access on public lands; carry chains and shovel; cold weather late in season (760) 872-1171.

X9b Good access on public lands; carry chains and shovel; cold weather late in season (760) 872-1171.

X9c Wilderness areas/Death Valley Park expansion restrict vehicle access and open hunting areas (760) 872-1171.

X10 Adequate access on public lands with steep, rough terrain. (559) 243-4005.

X12 Good access on public lands; carry chains and shovel; cold weather late in season (760) 872-1171.

	Hunt Code	Hunt Title	2015 Estimated Hunter Success	2015 Tag Quota	Date Quota Filled	2016 Proposed Archery Season Dates	2016 Proposed General Season Dates
General Method Hunts	G1	Late Season Buck in zone C4	31%	2,710	◆	N/A	Oct 22-Oct 30
	G3	Goodale Buck	94%	35	◆	N/A	Dec 3-18
	G6	Kern River Deer Herd Buck	58%	50	◆	N/A	Dec 3-11
	G8	Fort Hunter Liggett Antlerless	60%	10	◆	N/A	Oct 8-10 & 15, 16
	G9	Camp Roberts Antlerless	N/A	0		N/A	2016 Hunt Cancelled Due to Base Operations
	G12	Gray Lodge Shotgun Either-sex	35%	30	◆	N/A	Sep 17-25
	G13	San Diego Antlerless	27%	300	◆	N/A	Oct 22-Nov 13

G1 Late season tag, valid in C4 only. Instructions for how to apply for the G1 Tehama Wildlife Area Access Permit can be found at www.wildlife.ca.gov/Hunting/Deer#54774-zones--hunts CDFW contact 530-597-2201.

G3 Good public access; unpredictable weather (760) 872-1171.

G6 Good public access on National Forest lands (559) 243-4005.

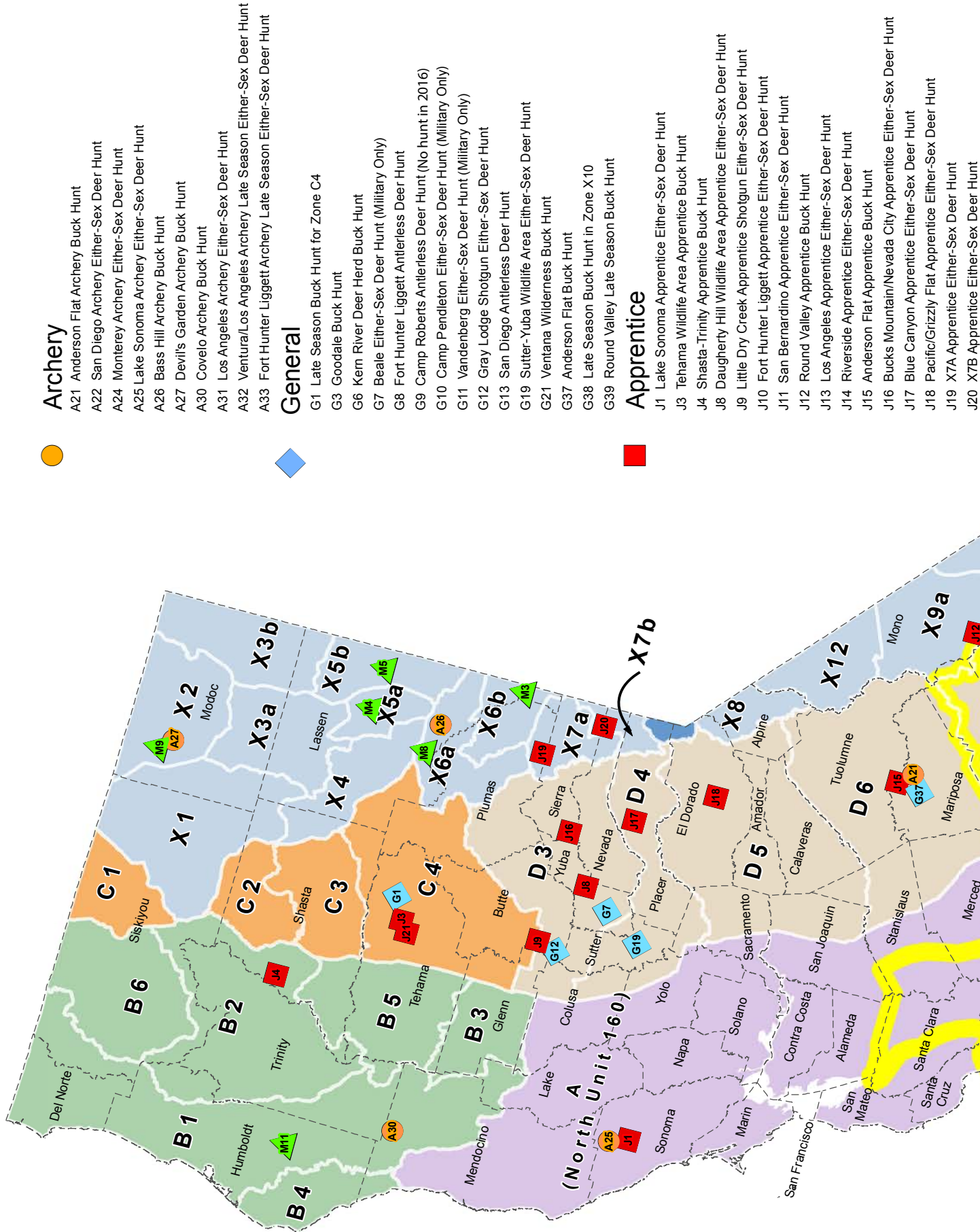
G8 Access fee required; date subject to change (831) 386-2214.

G9 2016 Hunt cancelled due to base operations.

G12 Gray Lodge Wildlife Area only; shotguns with solid slugs only (916) 358-2900.

G13 Good access on public lands; rugged terrain at higher elevations (858) 467-4201.

2016 Deer Zones and Additional Hunts



Archery

- A21 Anderson Flat Archery Buck Hunt
- A22 San Diego Archery Either-Sex Deer Hunt
- A24 Monterey Archery Either-Sex Deer Hunt
- A25 Lake Sonoma Archery Either-Sex Deer Hunt
- A26 Bass Hill Archery Buck Hunt
- A27 Devil's Garden Archery Buck Hunt
- A30 Covelo Archery Buck Hunt
- A31 Los Angeles Archery Either-Sex Deer Hunt
- A32 Ventura/Los Angeles Archery Late Season Either-Sex Deer Hunt
- A33 Fort Hunter Liggett Archery Late Season Either-Sex Deer Hunt



General

- G1 Late Season Buck Hunt for Zone C4
- G3 Goodale Buck Hunt
- G6 Kern River Deer Herd Buck Hunt
- G7 Beale Either-Sex Deer Hunt (Military Only)
- G8 Fort Hunter Liggett Antlerless Deer Hunt
- G9 Camp Roberts Antlerless Deer Hunt (No hunt in 2016)
- G10 Camp Pendleton Either-Sex Deer Hunt (Military Only)
- G11 Vandenberg Either-Sex Deer Hunt (Military Only)
- G12 Gray Lodge Shotgun Either-Sex Deer Hunt
- G13 San Diego Antlerless Deer Hunt
- G19 Sutter-Yuba Wildlife Area Either-Sex Deer Hunt
- G21 Ventana Wilderness Buck Hunt
- G37 Anderson Flat Buck Hunt
- G38 Late Season Buck Hunt in Zone X10
- G39 Round Valley Late Season Buck Hunt



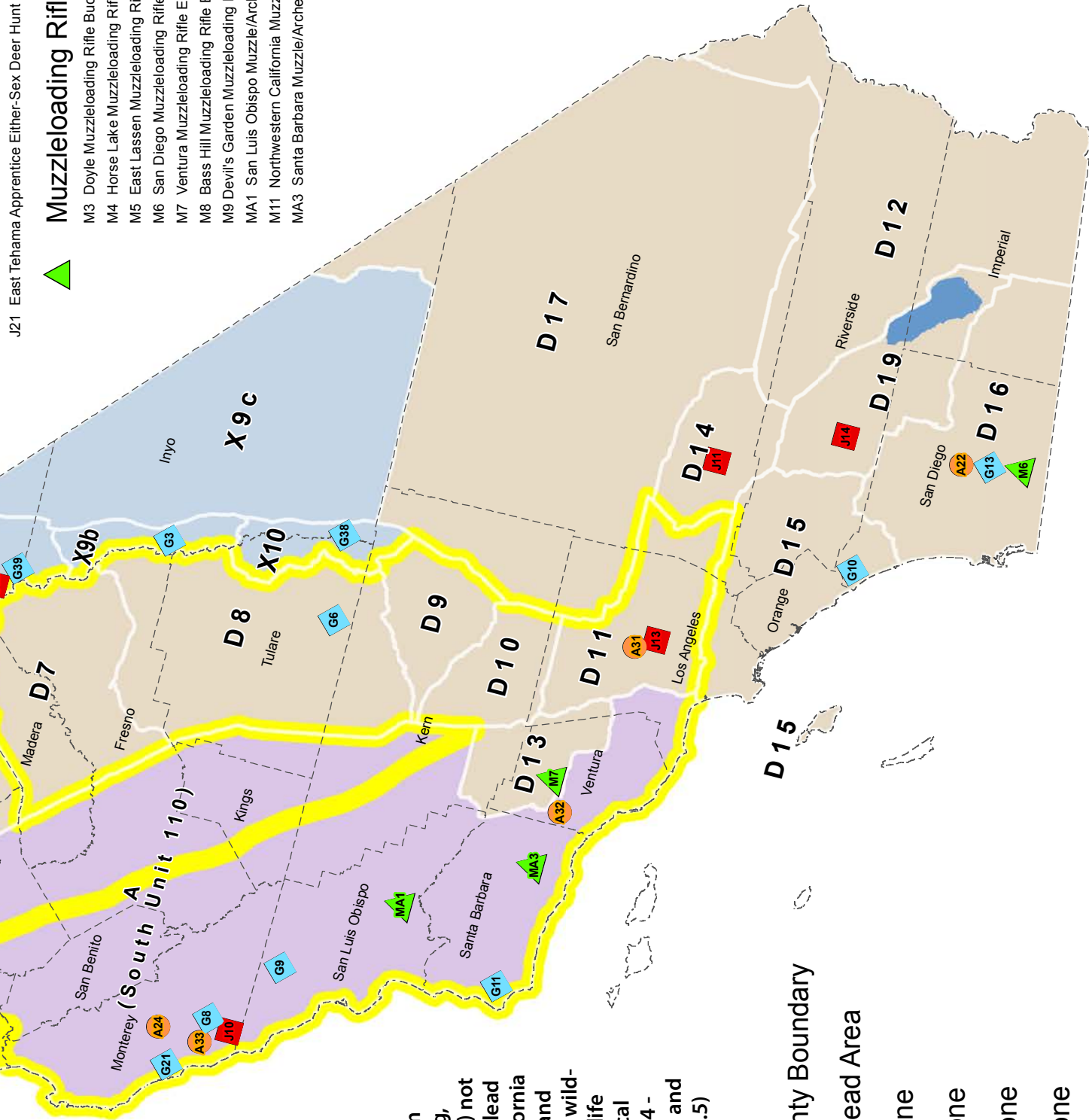
Apprentice

- J1 Lake Sonoma Apprentice Either-Sex Deer Hunt
- J3 Tehama Wildlife Area Apprentice Buck Hunt
- J4 Shasta-Trinity Apprentice Buck Hunt
- J8 Daugherty Hill Wildlife Area Apprentice Either-Sex Deer Hunt
- J9 Little Dry Creek Apprentice Shotgun Either-Sex Deer Hunt
- J10 Fort Hunter Liggett Apprentice Either-Sex Deer Hunt
- J11 San Bernardino Apprentice Either-Sex Deer Hunt
- J12 Round Valley Apprentice Buck Hunt
- J13 Los Angeles Apprentice Either-Sex Deer Hunt
- J14 Riverside Apprentice Either-Sex Deer Hunt
- J15 Anderson Flat Apprentice Buck Hunt
- J16 Bucks Mountain/Nevada City Apprentice Either-Sex Deer Hunt
- J17 Blue Canyon Apprentice Either-Sex Deer Hunt
- J18 Pacific/Grizzly Flat Apprentice Either-Sex Deer Hunt
- J19 X7A Apprentice Either-Sex Deer Hunt
- J20 X7B Apprentice Either-Sex Deer Hunt

J21 East Tehama Apprentice Either-Sex Deer Hunt

Muzzleloading Rifle

- M3 Doyle Muzzleloading Rifle Buck Hunt
- M4 Horse Lake Muzzleloading Rifle Buck Hunt
- M5 East Lassen Muzzleloading Rifle Buck Hunt
- M6 San Diego Muzzleloading Rifle Either-Sex Hunt
- M7 Ventura Muzzleloading Rifle Either-Sex Deer Hunt
- M8 Bass Hill Muzzleloading Rifle Buck Hunt
- M9 Devil's Garden Muzzleloading Rifle Buck Hunt
- MA1 San Luis Obispo Muzzle/Archery Either-Sex Deer Hunt
- M11 Northwestern California Muzzleloading Rifle Buck Hunt
- MA3 Santa Barbara Muzzle/Archery Buck Hunt



It is unlawful to use, or possess with any firearm capable of firing, any projectile(s) not certified as nonlead within the California Condor Range and when taking all wildlife on any wildlife area or ecological reserve. (CCRT14 - 250.1, 551, 552, and 630; FGC - 3004.5)

County Boundary

Nonlead Area

- A Zone
- B Zone
- C Zone
- D Zone
- X Zone

	Hunt Code	Hunt Title	2015 Estimated Hunter Success	2015 Tag Quota	Date Quota Filled	2016 Proposed Archery Season Dates	2016 Proposed General Season Dates
General, cont.	G19	Sutter-Yuba Wildlife Areas Either-sex	56%	25	◆	N/A	Sep 24-Dec 31
	G21	Ventana Wilderness Buck	44%	25	◆	N/A	Nov 12-Dec 4
	G37	Anderson Flat Buck	100%	25	◆	N/A	Nov 26-Dec 4
	G38	Late season Buck in zone X10	20%	300	◆	N/A	Oct 15-Oct 30
	G39	Round Valley Late Season Buck	100%	5	◆	N/A	Oct 22-Nov 6

G19 Archery-crossbow-shotguns with solid slugs only; all portions walk-in only (916) 358-2900.

G21 Open only on lands designated USFS Ventana Wilderness Area in Monterey County; steep, rugged, brushy; vehicle restrictions (831) 649-2870.

G37 Good access on National Forest Service lands (559) 243-4005.

G38 Adequate access on public lands with steep, rough terrain (559) 243-4005.

G39 Good access; 4 X 4 recommended; carry chains and shovel (760) 872-1171.

	Hunt Code	Hunt Title	2015 Estimated Hunter Success	2015 Tag Quota	Date Quota Filled	2016 Proposed Archery Season Dates	2016 Proposed General Season Dates
Muzzleloading Hunts	M3	Doyle Muzzleloading Rifle Buck	100%	20	◆	N/A	Nov 19-27
	M4	Horse Lake Muzzleloading Rifle Buck	40%	5	◆	N/A	Oct 22-Oct 30
	M5	East Lassen Muzzleloading Rifle Buck	100%	5	◆	N/A	Oct 22-Oct 30
	M6	San Diego Muzzleloading Rifle Either-sex	13%	80	◆	N/A	Dec 17-31
	M7	Ventura Muzzleloading Rifle Either-sex	15%	150	◆	N/A	Nov 26-Dec 11
	M8	Bass Hill Muzzleloading Rifle Buck	55%	20	◆	N/A	Oct 22-Oct 30
	M9	Devil's Garden Muzzleloading Rifle Buck	87%	15	◆	N/A	Oct 22-Nov 6
	M11	Northwestern California Muzzleloading Rifle Buck	55%	20	◆	N/A	Nov 12-27
	MA1	San Luis Obispo Muzzleloading Archery Either-sex	23%	150	◆	N/A	Nov 26-Dec 11
	MA3	Santa Barbara Muzzleloading Archery Buck	17%	150	◆	N/A	Nov 26-Dec 11

M3 Good access on public lands. CDFW contact (530) 254-6808.

M4 Good access on public lands administered by the Eagle Lake Field Office BLM (530) 257-0456. CDFW contact (530) 254-6808.

M5 Good access on public lands administered by the Eagle Lake Field Office BLM (530) 257-0456. CDFW contact (530) 254-6808.

M6 Good access on public lands; rugged terrain at higher elevations (858) 467-4201.

M7 Good access; hunt on public lands (858) 467-4201.

M8 Mostly private land in hunt area, but good access on those lands that are public. CDFW contact (530) 254-6808.

M9 Good access on public lands managed by the Modoc National Forest (530) 233-5811. CDFW contact (530) 233-3581.

M11 Contact CDFW Eureka office (707) 445-6493 or CDFW Redding office (530) 225-2300.

MA1 Open only on that portion of San Luis Obispo County lying within the Los Padres National Forest. Good access on public lands; rugged terrain (831) 649-2870.

MA3 Fair access on public lands vehicle use limited (858) 467-4201.

	Hunt Code	Hunt Title	2015 Estimated Hunter Success	2015 Tag Quota	Date Quota Filled	2016 Proposed Archery Season Dates	2016 Proposed General Season Dates
Apprentice Hunts	J1	Lake Sonoma Apprentice Either-sex	24%	25	◆	N/A	Nov 5-6
	J3	Tehama Wildlife Area Apprentice Buck	67%	15	◆	N/A	Nov 26-27
	J4	Shasta-Trinity Apprentice Buck	93%	15	◆	N/A	Nov 26-Dec 4
	J7	Carson River Apprentice Either-sex	67%	15	◆	N/A	2016 Hunt Vetoed by Alpine County
	J8	Daugherty Hill Wildlife Area Apprentice Either-sex	13%	15	◆	N/A	Dec 3-31

J1 Rugged oak/grassland habitat with good deer numbers. Boats required in two-thirds of area. No dogs allowed (707) 944-5500.

J3 Hunt area is restricted to CDFW's Tehama Wildlife Area. CDFW contact (530) 529-7162.

J4 Good public access on Shasta Trinity National Forest (530) 226-2300 and Redding Field Office BLM lands (530) 224-2100. CDFW Redding office (530) 225-2300.

J7 Hunt Vetoed by Alpine County.

J8 Good access. Wildlife Area only (916) 358-2900.

	Hunt Code	Hunt Title	2015 Estimated Hunter Success	2015 Tag Quota	Date Quota Filled	2016 Proposed Archery Season Dates	2016 Proposed General Season Dates
Apprentice Hunts, ctd.	J9	Little Dry Creek Apprentice Shotgun Either-sex	40%	5	◆	N/A	Sep 17-25
	J10	Fort Hunter Liggett Apprentice Either-sex	71%	75	◆	N/A	Oct 8-10 & 15, 16
	J11	San Bernardino Apprentice Either-sex	40%	40	◆	N/A	Nov 19-27
	J12	Round Valley Apprentice Buck	100%	10	◆	N/A	Dec 3-18
	J13	Los Angeles Apprentice Either-sex	60%	40	◆	N/A	Nov 19-27
	J14	Riverside Apprentice Either-sex	37%	30	◆	N/A	Nov 19-27
	J15	Anderson Flat Apprentice Buck	90%	10	◆	N/A	Nov 26-Dec 4
	J16	Bucks Mountain/Nevada City Apprentice Either-sex	67%	75	◆	N/A	Sep 24-Oct 30
	J17	Blue Canyon Apprentice Either-sex	60%	25	◆	N/A	Sep 24-Oct 30
	J18	Pacific/Grizzly Flat Apprentice Either-sex	39%	75	◆	N/A	Sep 24-Oct 30
	J19	Zone X7A Apprentice Either-sex	80%	25	◆	N/A	Oct 1-16
	J20	Zone X7B Apprentice Either-sex	80%	20	◆	N/A	Oct 1-16
J21	East Tehama Apprentice Either-sex	60%	50	◆	N/A	Sep 17-Oct 30	

J9 Good access. Wildlife Area only. Shotguns using slugs only (916) 358-2900.

J10 Season subject to change by Commanding Officer (831) 386-2214.

J11 Within D14 and San Bernardino County only. Fair access on public lands (909) 484-0167.

J12 Good access; 4 X 4 recommended; carry chains and shovel (760) 872-1171.

J13 Mostly good access on public land except closures in Angeles National Forest. Call (626) 574-5200 for closure information (858) 467-4201.

J14 Within zone D19 and Riverside County only. Good access on public lands (909) 484-0167.

J15 Good public access on National Forest lands (559) 243-4005.

J16 Good access on National Forest lands; Mostly private at lower elevations (916) 358-2900. Please note: exclusion of Butte, Colusa and Glenn counties.

J17 Good access on National Forest lands; Mostly private at lower elevations. (916) 358-2900. Please note: exclusion of Colusa County.

J18 Good access on National Forest lands; mostly private at lower elevations (916) 358-2900. Please note: exclusion of Amador, Calaveras and Tuolumne counties.

J19 Good access on public lands (916) 358-2900.

J20 Good access on public lands (916) 358-2900.

J21 Good access in eastern portion on public lands administered primarily by the Lassen National Forest (530) 257-2151. Tehama Wildlife Area is not open to J21 hunters during the G1 season. CDFW contact (530) 529-7162.

	Hunt Code	Hunt Title	2015 Estimated Hunter Success	2015 Tag Quota	Date Quota Filled	2016 Proposed Archery Season Dates	2016 Proposed General Season Dates
Area-Specific	A1	Archery Season Buck in Zones C1 - C4	24%	1,945	◆	See Zone Below	N/A
		C1				Aug 20-Sep 4	N/A
		C2				Aug 20-Sep 11	N/A
		C3				Aug 20-Sep 11	N/A
		C4				Aug 20-Sep 4	N/A
	A3	Archery Buck in zone X1	49%	115	◆	Aug 20-Sep 11	N/A
	A4	Archery Buck in zone X2	60%	10	◆	Aug 20-Sep 11	N/A

A1 tag is valid in zones C1, C2, C3 and C4 during the Archery Season only.

A1-C1 Fair access. Much private land, some owned by timber companies and open to hunting. Most public land is administered by Klamath National Forest; (530) 842-6131. CDFW contact (530) 459-3164.

A1-C2 Good access, mostly public land administered by the Shasta Trinity National Forest (530) 226-2500 and private timber companies open to hunting. CDFW contact (530) 225-2300.

A1-C3 and C4 Good access at middle and higher elevations on Lassen National Forestland (530) 257-2151. Fair access on private timberlands open to hunting. Sierra Pacific Industries property is

restricted to walking only; no motorized vehicle access behind locked gates without Sierra Pacific Industries' prior written permission. Lower elevations are largely private property where access is restricted. CDFW Redding office (530) 225-2300.

A3 Good access on public lands administered by Klamath National Forest (530) 842-6131, Shasta Trinity N.F. (530) 226-2500, Modoc N.F. (530) 233-5811; no shooting within two-mile radius of Medicine Lake. Road management areas within zone - refer to national forest maps for detail. CDFW contact (530) 459-3164.

A4 Good access on public lands, primarily administered by Modoc National Forest (530) 233-5811. CDFW contact (530) 233-3581.

	Hunt Code	Hunt Title	2015 Estimated Hunter Success	2015 Tag Quota	Date Quota Filled	2016 Proposed Archery Season Dates	2016 Proposed General Season Dates
Area-Specific, Continued	A5	Archery Buck in zone X3a	51%	35	◆	Aug 20-Sep 11	N/A
	A6	Archery Buck in zone X3b	33%	70	◆	Aug 20-Sep 11	N/A
	A7	Archery Buck in zone X4	45%	120	◆	Aug 20-Sep 11	N/A
	A8	Archery Buck in zone X5a	30%	10	◆	Aug 20-Sep 11	N/A
	A9	Archery Buck in zone X5b	20%	15	◆	Aug 20-Sep 11	N/A
	A11	Archery Buck in zone X6a	64%	50	◆	Aug 20-Sep 11	N/A
	A12	Archery Buck in zone X6b	48%	90	◆	Aug 20-Sep 11	N/A
	A13	Archery Buck in zone X7a	33%	45	◆	Aug 20-Sep 11	N/A
	A14	Archery Buck in zone X7b	48%	25	◆	Aug 20-Sep 11	N/A
	A15	Archery Buck in zone X8	8%	40	◆	Aug 20-Sep 11	N/A
	A16	Archery Buck in zone X9a	39%	140	◆	Aug 20-Sep 11	N/A
	A17	Archery Buck in zone X9b	13%	300	◆	Aug 20-Sep 11	N/A
	A20	Archery Buck in zone X12	35%	100	◆	Aug 20-Sep 11	N/A
	A21	Anderson Flat Archery Buck	72%	25	◆	Nov 12-25	N/A
	A24	Monterey Archery Either-sex	31%	100	◆	Oct 8- Nov 6	N/A
	A25	Lake Sonoma Archery Either-sex	31%	35	◆	Oct 1-24	N/A
	A26	Bass Hill Archery Buck	63%	30	◆	Nov 19-Dec 11	N/A
	A27	Devils Garden Archery Buck	40%	5	◆	Oct 22-Nov 6	N/A
A30	Covelo Archery Buck	45%	40	◆	Nov 12-27	N/A	
A31	Los Angeles Archery Either-sex	10%	1000	◆	Sep 24-Dec 31	N/A	
A33	Fort Hunter Liggett Archery Late Season Either-sex	50%	22	◆	Oct 1-Nov 11	N/A	

A5 Good access on Modoc National Forest (530) 233-5811 and Alturas Field Office BLM lands (530) 233-4666. CDFW contact (530) 233-3581.

A6 Good access to public land. Contact the Modoc National Forest (530) 233-5811, Alturas Field Office BLM (530) 233-4666, or Surprise Field Office BLM lands (530) 279-6101 for more information. CDFW contact (530) 233-3581.

A7 Good access on public lands, primarily administered by the Lassen National Forest (530) 257-2151. Most private timberland open for public hunting. CDFW contact (530) 254-6808.

A8-A9 Good access on public lands administered by the Eagle Lake Field Office BLM (530) 257-0456. CDFW contact (530) 254-6808.

A11 CDFW Lassen County contact (530) 254-6808. CDFW Plumas County contact (916) 358-2900.

A12 Good access to public lands. CDFW Lassen County contact (530) 254-6808. CDFW Plumas County contact (916) 358-2900.

A13 Good access on public lands (916) 358-2900.

A14 Good access on public lands (916) 358-2900.

A15 Good access on public lands (916) 358-2900.

A16 Good access on public lands (760) 872-1171.

A17 Good access on public lands (760) 872-1171.

A20 Good access on public lands (760) 872-1171.

A21 Good public access on national forest lands (559) 243-4005.

A24 Fair access on public land; steep terrain; possible fire closures on National Forest lands (831) 649-2870.

A25 Sat-Sun-Mon only; rugged terrain, oak/grassland and chaparral habitat with good deer numbers (707) 944-5500.

A26 Mostly private land in hunt area, but good access on those lands that are public. CDFW contact (530) 254-6808.

A27 Good access on public lands managed by the Modoc National Forest (530) 233-5811. CDFW contact (530) 233-3581.

A30 Good public access to Mendocino National Forest (530) 934-3316, and Arcata Field Office BLM lands (707) 825-2300. CDFW Eureka office (707) 445-6493, CDFW Redding office (530) 225-2300.

A31 Good access on public land except closures in Angeles National Forest (858) 467-4201. Closure information: (626) 574-5200.

A33 Season subject to change by commanding officer. Access fee required (831) 386-2214.

NON-REPORTING OF 2016 DEER TAGS WILL BE ASSESSED A PENALTY

Deer tag holders who fail to submit a harvest report for any 2016 deer tag by January 31, 2017, will be assessed a \$21.60 non-reporting penalty fee when purchasing a deer tag drawing application or deer tag in the 2017 license year.

ONLINE HARVEST REPORTING

RESTRICTED DEER HUNT The restricted deer hunt tag is issued upon request to hunters applying on a first-deer tag. Hunters may apply for a restricted deer hunt tag as their second-deer tag on August 2, 2016. The restricted deer hunt tag will be available at CDFW license sales offices, license agents, online and telephone sales until tag quotas fill.

	Hunt Code	Hunt Title	2015 Estimated Hunter Success	2015 Tag Quota	Date Quota Filled	2016 Proposed Archery Season Dates	2016 Proposed General Season Dates
Area-Specific, continued	A18	Archery Buck in zone X9c	6%	350	7/4/15	Aug 20-Sep 11	N/A
	A19	Archery Buck in zone X10	4%	100	8/2/15	Aug 20- Sep 4	N/A
	A22	San Diego Archery Either-sex	9%	1,000	7/29/15	Sep 3-Oct 16 Nov 19-Dec 31	N/A
Gen.	D6		12%	10,000	8/3/15	Aug 20-Sep 11	Sep 17-Oct 30
	D16		21%	3,000	8/2/15	Sep 3-25	Oct 22-Nov 20

A18 Wilderness areas/Death Valley National Park restrict vehicle access and hunting areas (760) 872-1171.

A19 Adequate public land access; steep, rough terrain. (559)243-4005.

A22 Split season. Good access on public lands; rugged at higher elevations. (858) 467-4201.

D6 Good public access on National Forest lands (559) 243-4005. Forest closures may restrict hunter access and tag allotment.

D16 Good access on public lands; higher elevations rugged (858) 467-4201.

UNRESTRICTED DEER ZONES and HUNTS Unrestricted deer hunt tags are issued upon request until tag quotas fill. You may use your First-Deer Tag and/or Second-Deer Tag to apply for unrestricted deer hunt tags.

	Hunt Code	Hunt Title	2015 Estimated Hunter Success	2015 Tag Quota	Date Quota Filled	2016 Proposed Archery Season Dates	2016 Proposed General Season Dates	
General Deer Zones	AO		15%	N/A	N/A	See Zone	Archery Only See Season	
	A		32%	65,000	✘	Jul 9-31	Aug 13-Sep 25	
	B	General and Archery Seasons in Zones B1 - B6		23%	35,000	8/31/15	See B Zone Below	See B Zone Below
		B1	Aug 20-Sep 11				Sep 17 -Oct 23	
		B2	Aug 20-Sep 11				Sep 17 -Oct 23	
		B3	Aug 20-Sep 11				Sep 17 -Oct 23	
		B4	Jul 23-Aug14				Aug 27 -Oct 2	
		B5	Aug 20-Sep 11				Sep 17 -Oct 23	
		B6	Aug 20-Sep 11				Sep 17 -Oct 16	

AO Archery only (AO) Tags are valid for archery equipment during the archery and general seasons in zones A, B, any D zone, hunt G10 (military personnel only).

A Mostly private land. Public access on BLM and National Forest lands. For specific information regarding these areas contact the local BLM field office or National Forest at: Ukiah BLM (707) 468-4000, Hollister BLM (831) 630-5000, or Bakersfield BLM, (661) 391-6000; Mendocino NF in Willows (530) 934-3316, or Los Padres NF in Goleta (805) 968-6640. For additional information contact the nearest Department Regional office.

B Zone B Tag is valid in Zones B1 - B6

B1 Good public access to Mendocino National Forest (530) 934-3316, Shasta Trinity National Forest (530) 226-2500, Six Rivers National Forest (707) 442-1721, Arcata Field Office BLM lands (707) 825-2300. CDFW Eureka office (707) 445-6493.

B2 Good public access on Shasta Trinity National Forest (530) 934-3316, Klamath National Forest (530) 842-6131, Six Rivers National Forest (707) 442-1721, and Redding Field Office BLM lands (530) 224-2100. CDFW Redding office (530) 225-2300.

B3 Good public access to Mendocino National Forest lands in western part of hunt area (530) 934-3316 CDFW Rancho Cordova office (916) 358-2900.

B4 Largely private, limited public access on King Range Conservation area, administered by Arcata Field Office BLM (707) 825-2300. CDFW Eureka office (707) 445-6493.

B5 In the western portion of the zone, public access is good on Mendocino National Forest (530) 934-3316 and Shasta Trinity National Forest (530) 226-2500. CDFW Redding office (530) 225-2300.

B6 Public access good in Klamath National Forest (530) 842-6131. Foothills of Scott and Shasta valleys are largely private. CDFW contact (530) 459-3164.

	Hunt Code	Hunt Title	2015 Estimated Hunter Success	2015 Tag Quota	Date Quota Filled	2016 Proposed Archery Season Dates	2016 Proposed General Season Dates
General cont.	D3-5		17%	33,000	10/7/15	Aug 20-Sep 11	Sep 24- Oct 30
	D7		10%	9,000	8/14/15	Aug 20-Sep 11	Sep 17-Oct 30
	D8		10%	8,000	✘	Aug 20-Sep 11	Sep 24 -Oct 23
	D10		35%	700	✘	Aug 20-Sep 11	Sep 24-Oct 23
	D11		14%	5,500	✘	Sep 3-25	Oct 8-Nov 6
	D13		12%	4,000	✘	Sep 3-25	Oct 8-Nov 6
	D14		15%	3,000	8/29/15	Sep 3-25	Oct 8-Nov 6
	D15		7%	1,500	✘	Sep 3-25	Oct 8-Nov 6
	D19		12%	1,500	9/8/15	Sep 3-25	Oct 1-Oct 30
Area-Specific	A32	Ventura/Los Angeles Late Season Archery Either-Sex	9%	250	9/10/15	Nov 12-Dec 4	N/A

◆ Tag quota filled in the 2015 Big Game Drawing conducted on June 11, 2015. ✘ Tag quota did not fill in 2015.

*Subject to final approval by the California Fish and Game Commission on April 14, 2016. For information on approved tag quotas and season dates, please contact your nearest CDFW license sales office after April 18, 2016; or go online at: www.wildlife.ca.gov/Hunting/Deer

D3-5 Tag is valid in Zones D3, D4 and D5. Good public access on National Forest lands, mostly private at lower elevations (916) 358-2900.

D7 Good public access on National Forest lands (559) 243-4005.

D8 Good public access on National Forest lands (559) 243-4005.

D10 No public land available; hunting normally restricted to landowners and permittees (559) 243-4005.

D11 Tag good for D11, D13 and D15, but not Camp Pendleton. Mostly good access on public land except closures in Angeles National Forest. Call (626) 574-5200 for closure information (858) 467-4201.

D13 Tag good for D11, D13 and D15, but not Camp Pendleton. Good access on public lands; portion of zone on private lands (858) 467-4201.

D14 Fair access on public lands (909) 484-0167.

D15 Tag good for D11, D13 and D15, but not Camp Pendleton. Good access on public lands. Written permission is required to hunt on Santa Catalina Island which is private property (858) 467-4201.

D19 Good access on public lands; rugged terrain at higher elevations (909) 484-0167.

A32 Mostly good access on public land except closures in Angeles National Forest (858) 467-4201. Closure information: (626) 574-5200.



Kaleb Eye



Landon Cannon

SHARE



Shared Habitat Alliance for Recreational Enhancement
California Department of Fish and Wildlife



NEW ELK HUNTS

SHARE will offer 26 elk hunts on 20 properties in Del Norte, Humboldt, Mendocino and Siskiyou counties. Property and application information will be posted on the SHARE webpage on May 15th. Preference points will not be utilized (gained or lost) for SHARE elk hunts.

SHARE properties will offer access for:

- 10 bull elk tags
- 20 antlerless elk tags
- 3 junior only antlerless elk tags

Subject to final approval by the California Fish and Game Commission on April 14, 2016.

OTHER SHARE HUNTS

Solano County: wild pig • **Santa Barbara County:** deer, bear, wild pig, turkey, dove and quail

Merced County: waterfowl, dove, pheasant

For more information about these hunts or the SHARE Program please visit the SHARE website at:

www.wildlife.ca.gov/Hunting/SHARE



ELK, ANTELOPE & BIGHORN SHEEP HUNTING

ELK, ANTELOPE & BIGHORN SHEEP HUNTING INFORMATION

For the 2016 Big Game Drawing, 14 is the maximum number of preference points for any species a hunter can have. To look up your preference points totals log on to your customer profile at www.ca.wildlifelicenses.com/InternetSales and click on 'View My Draw Application/Preference Points' at the top of the page.

By law, you may only submit one application for each species. Any person submitting multiple applications for the same species will be rejected from the drawing and may be prosecuted. All applicants must submit the \$8.13 nonrefundable processing fee for their application.

ELK AND ANTELOPE TAG APPLICATION RESTRICTIONS

Applicants must be 12 years of age or older on or before July 1, 2016, and possess a valid 2016/2017 California hunting license. Only one nonresident may be drawn for an elk or antelope tag annually.

APPRENTICE ELK & ANTELOPE HUNTS

Applicants must possess a valid 2016/2017 California Junior Hunting License. If drawn, junior hunters must be accompanied when hunting, by a licensed adult chaperone at least 18 years of age.

BIGHORN SHEEP TAG APPLICATION RESTRICTIONS

Applicants must be at least 16 years of age or older on or before July 1, 2016, and possess a valid 2016/2017 California hunting license and must not have drawn a California Bighorn sheep tag in any prior year.

Not more than 10% of the Bighorn sheep tags shall be awarded to non-residents each year.

Applicants cannot apply as a party for a Bighorn sheep tag.

MANDATORY BIGHORN SHEEP HUNT ORIENTATION

Successfully drawn applicants and recipients of fund-raising tags must complete the hunter orientation requirement.

APPLYING AS A PARTY

Up to two residents may apply as a party. Nonresidents cannot apply as a party for elk or antelope tags. See page 20 for instructions on applying as a party.

If your party is drawn for the last available tag, the party leader will be awarded the tag and the party member will become the first alternate for that hunt. Parties drawn as alternates will be awarded unclaimed tags on an individual basis, in the order drawn.

Bighorn sheep applicants may not apply as a party.

CHECK YOUR BIG GAME DRAWING RECEIPT CAREFULLY!

All applicants will receive a Drawing Receipt containing the applicants name, hunt choice, accumulated preference points and a Party Number. Applicants should verify the information on their Drawing Receipt before leaving the sales counter. If any of the information is incorrect, the sales clerk must cancel the Drawing Receipt document and 're-sell' the application with the correct information. License agents have only four hours to cancel a sale. If the transaction has exceeded the four hour limit when the discrepancy is found, the applicant must contact CDFW's License and Revenue Branch prior to the June 2nd deadline at (916) 419-7573, or e-mail LRB@wildlife.ca.gov.

DRAWING RESULTS

The CDFW has 10 business days to conduct the drawing. Applicants may look up their drawing results on or around June 17, 2016 by entering their customer information on CDFW's website at www.ca.wildlifelicenses.com/InternetSales and click on 'View My Draw Application/Preference Points' at the top of the page. Applicants will also see their new preference point totals by clicking on the tab 'Preference Point.' On the same day, drawing results will be available by phone during regular business hours from CDFW license sales offices.

NOTIFYING APPLICANTS

Successful applicants and alternates should receive notices in the mail by July 2, 2016. Unsuccessful applicants will not be notified by mail.

TAG FEES & PAYMENT DEADLINE

Fee payments from successful applicants for elk and antelope tags must be received by the designated CDFW license sales office or purchased online by 5:00 p.m. on July 15, 2016. Fee payments for Bighorn sheep tags must be received by CDFW's License and Revenue Branch in Sacramento by 5:00 p.m. on July 15, 2016. Should there be unclaimed tags for any hunt after that date; the alternate list for that hunt shall be used. Tags will be awarded on an individual basis in the order drawn.

Elk Tag Fee:

Resident - \$445.35
Nonresident - \$1361.20

Antelope Tag Fee:

Resident - \$149.61
Nonresident - \$458.50

Bighorn Sheep Tag Fee:

Resident - \$407.50
Nonresident - \$1507.50

DEFINITIONS

Antlerless Elk: Any elk, with the exception of spotted calves, with antlers less than four inches in length as measured from the top of the skull CCRT14-364(l)(3).

Bull Elk: Any elk having an antler or antlers at least four

inches in length as measured from the top of the skull CCRT14-364(l)(1).

Either-Sex Elk: Bull elk, spike elk, or antlerless elk. CCRT14-364(l)(4).

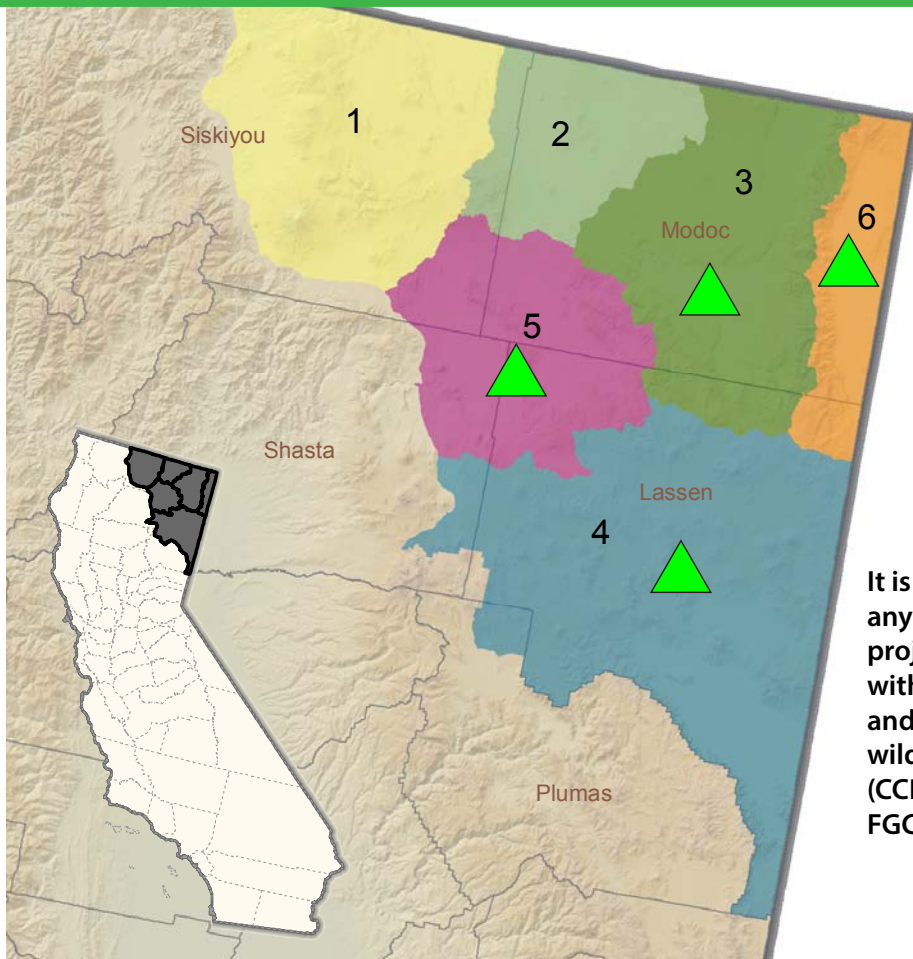
Spike Bull Elk: A bull elk having no more than one point on each antler. An antler point is a projection of the antler at least one inch long and longer than the width of its base. CCRT14-364(l)(2).

Buck Pronghorn Antelope: Pronghorn antelope with horns longer than the ears. CCRT14-363(k)(2).

Doe Pronghorn Antelope: Pronghorn antelope with horns shorter than the ears. CCRT14-363(k)(2).

Either-Sex Pronghorn Antelope: Buck or doe pronghorn antelope. CCRT14-363(k)(2).

ANTELOPE



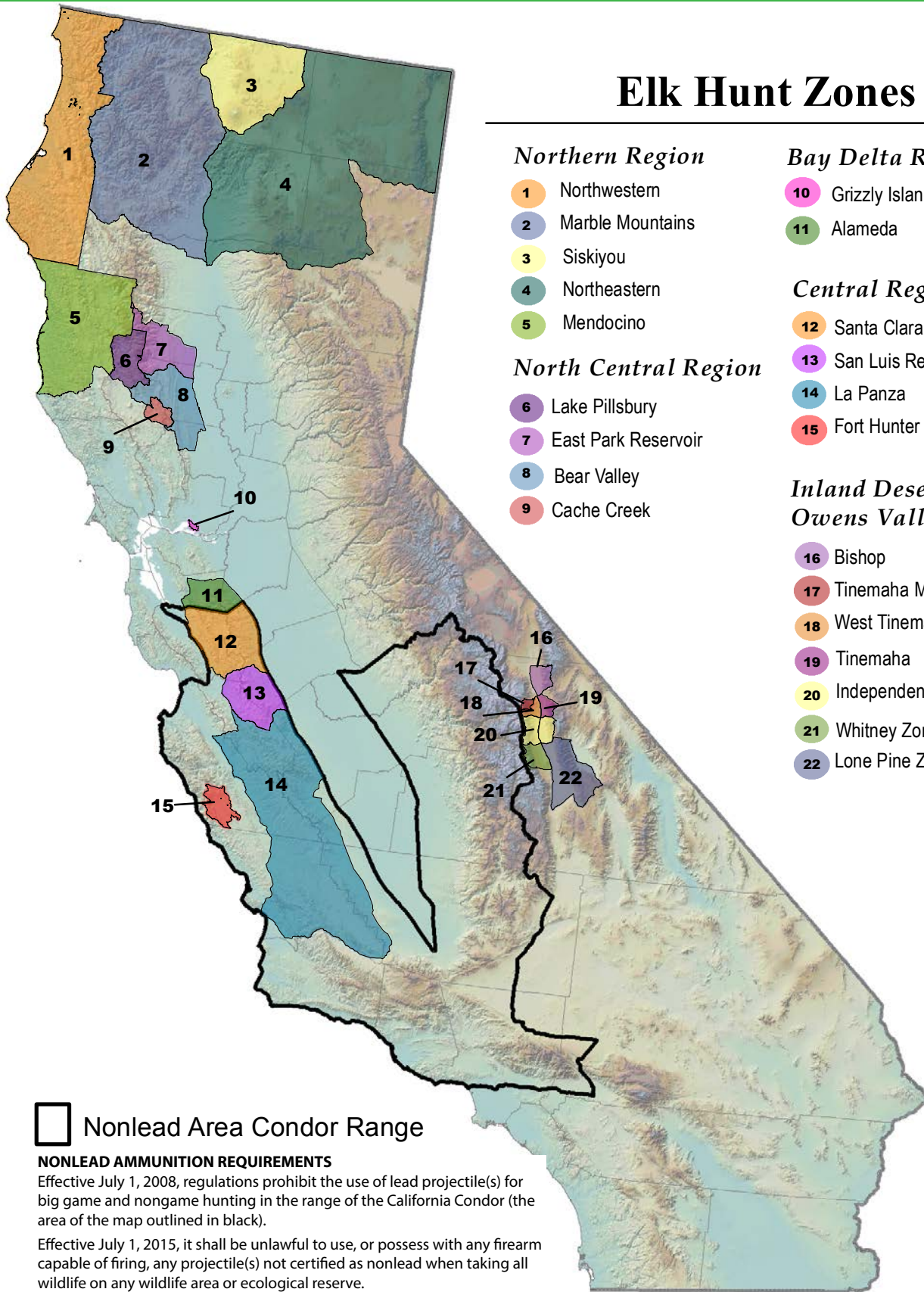
It is unlawful to use, or possess with any firearm capable of firing, any projectile(s) not certified as nonlead within the California Condor Range and when taking all wildlife on any wildlife area or ecological reserve. (CCRT14 - 250.1, 551, 552, and 630; FGC - 3004.5)

Antelope Hunt Zones

- 1 Mount Dome 3 Likely Tables 5 Big Valley
- 2 Clear Lake 4 Lassen 6 Surprise Valley
- Lassen Apprentice, Surprise Valley Apprentice, Big Valley Apprentice Hunt and Likely Tables Apprentice
- Closed To Antelope Hunting

ELK

Elk Hunt Zones



Northern Region

- 1 Northwestern
- 2 Marble Mountains
- 3 Siskiyou
- 4 Northeastern
- 5 Mendocino

North Central Region

- 6 Lake Pillsbury
- 7 East Park Reservoir
- 8 Bear Valley
- 9 Cache Creek

Bay Delta Region


- 10 Grizzly Island
- 11 Alameda

Central Region

- 12 Santa Clara
- 13 San Luis Reservoir
- 14 La Panza
- 15 Fort Hunter Liggett

Inland Deserts Region Owens Valley Hunts

- 16 Bishop
- 17 Tinemaha Mountain
- 18 West Tinemaha
- 19 Tinemaha
- 20 Independence
- 21 Whitney Zone
- 22 Lone Pine Zone

 Nonlead Area Condor Range

NONLEAD AMMUNITION REQUIREMENTS

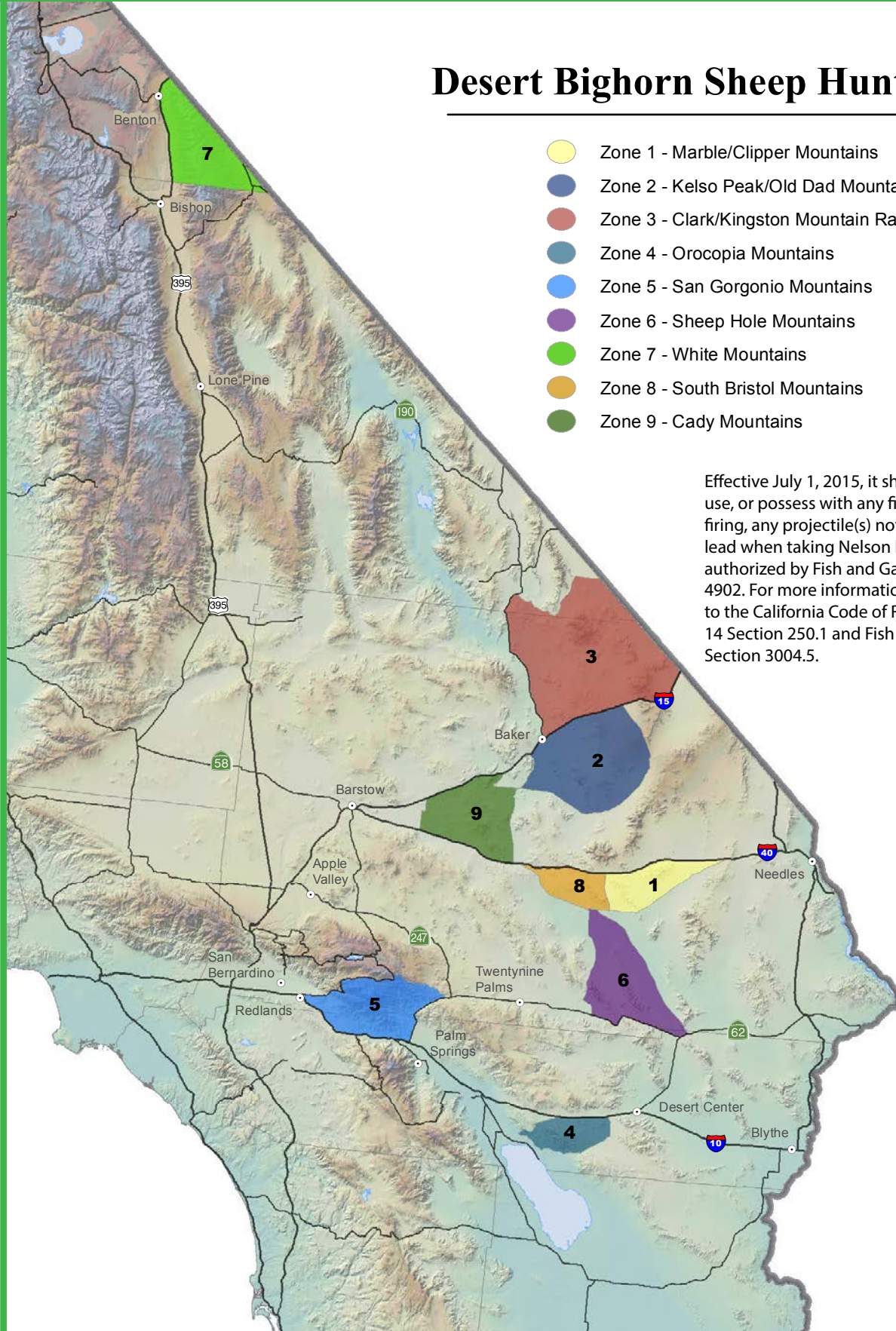
Effective July 1, 2008, regulations prohibit the use of lead projectile(s) for big game and nongame hunting in the range of the California Condor (the area of the map outlined in black).

Effective July 1, 2015, it shall be unlawful to use, or possess with any firearm capable of firing, any projectile(s) not certified as nonlead when taking all wildlife on any wildlife area or ecological reserve.

For more information please refer to the California Code of Regulations Title 14 Section 250.1 and Fish and Game Code Section 3004.5.

BIGHORN SHEEP

Desert Bighorn Sheep Hunt Zones



- Zone 1 - Marble/Clipper Mountains
- Zone 2 - Kelso Peak/Old Dad Mountains
- Zone 3 - Clark/Kingston Mountain Ranges
- Zone 4 - Orocopia Mountains
- Zone 5 - San Gorgonio Mountains
- Zone 6 - Sheep Hole Mountains
- Zone 7 - White Mountains
- Zone 8 - South Bristol Mountains
- Zone 9 - Cady Mountains

Effective July 1, 2015, it shall be unlawful to use, or possess with any firearm capable of firing, any projectile(s) not certified as non-lead when taking Nelson bighorn sheep as authorized by Fish and Game Code Section 4902. For more information please refer to the California Code of Regulations Title 14 Section 250.1 and Fish and Game Code Section 3004.5.

2015 ELK TAG DRAWING STATISTICS

Hunt Code	Hunt Tag Description	Tag Quota	Preference Point Quota	Random Quota	Total Applicants	Maximum Point Applicants*
499	PREFERENCE POINT ONLY - ELK	0	0	0	7098	653
APPRENTICE						
484	Cache Creek - General Methods - Bull	1	0	1	257	0
471	Fort Hunter Liggett Period 1 - General Methods - Antlerless	1	0	1	91	0
472	Fort Hunter Liggett Period 3 - General Methods - Bull	1	0	1	469	0
466	Grizzly Island - Period 1 - Antlerless	3	2	1	267	0
467	Grizzly Island - Period 1 - Spike Bull	1	0	1	94	0
469	Grizzly Island - Period 2 - Spike Bull	2	1	1	193	0
464	La Panza Period 1 - General Methods - Antlerless	1	0	1	65	0
408	Marble Mountain - General Methods - Either Sex	2	1	1	222	0
409	Northeastern California - General Methods - Either Sex	2	1	1	545	0
ANTLERLESS						
329	Bear Valley - General Method	2	1	1	37	0
416	Cache Creek Period 2 - General Methods	3	2	1	146	2
463	East Park Reservoir - General Methods	2	1	1	95	1
450	Fort Hunter Liggett - Archery	4	3	1	63	0
444	Fort Hunter Liggett Period 1 - General Methods	4	3	1	196	0
448	Fort Hunter Liggett Period 2 - General Methods	4	3	1	160	2
433	Grizzly Island Period 1 - General Methods	5	4	1	227	9
436	Grizzly Island Period 2 - General Methods	8	6	2	273	13
439	Grizzly Island Period 3 - General Methods	8	6	2	372	23
442	Grizzly Island Period 4 - General Methods	8	6	2	257	10
443	Grizzly Island Period 5 - General Methods	8	6	2	125	8
417	La Panza Period 1 - General Methods	5	4	1	122	1
418	La Panza Period 2 - General Methods	6	5	1	139	1
331	Lake Pillsbury - General Methods	4	3	1	233	3
301	Marble Mountain - General Methods	10	8	2	199	2
327	Mendocino - General Methods	2	1	1	49	0
304	Northeastern California - General Methods	10	8	2	400	21
401	Siskiyou - General Methods	20	15	5	223	2
304	Northeastern California	10	8	2	323	20
401	Siskiyou	20	15	5	187	0

2015 ELK TAG DRAWING STATISTICS, CONTINUED

Hunt Code	Hunt Tag Description	Tag Quota	Preference Point Quota	Random Quota	Total Applicants	Maximum Point Applicants*
BULL						
330	Bear Valley - General Methods	3	2	1	198	20
487	Bishop Period 1 - Muzzleloader	1	0	1	264	34
490	Bishop Period 3 - General Methods	2	1	1	790	78
406	Cache Creek Period 1 - General Methods	3	2	1	653	71
461	East Park Reservoir - General Methods	2	1	1	889	190
447	Fort Hunter Liggett Period 3 - General Methods	4	3	1	1518	175
434	Grizzly Island Period 1 - General Methods - Spike Bull	4	3	1	191	12
437	Grizzly Island Period 2 - General Methods - Spike Bull	3	2	1	75	5
440	Grizzly Island Period 3 - General Methods - Spike Bull	2	1	1	97	6
338	Grizzly Island Period 5 - General Methods	2	1	1	1159	252
341	Grizzly Island Period 4 - General Methods	2	1	1	1844	400
351	Grizzly Island Period 5 - General Methods - Spike Bull	2	1	1	380	9
308	Independence Period 1 - Muzzleloader	1	0	1	177	22
340	Independence Period 2 - General Methods	2	1	1	413	56
419	La Panza Period 1 - General Methods	6	5	1	437	64
420	La Panza Period 2 - General Methods	6	5	1	537	68
332	Lake Pillsbury - General Methods	2	1	1	682	86
496	Lone Pine Period 3 - General Methods	2	1	1	781	104
429	Lone Pine Period 4 - General Methods	2	1	1	566	85
302	Marble Mountain - General Methods	35	27	8	1731	101
328	Mendocino - General Methods	2	1	1	205	8
305	Northeastern California - General Methods	15	12	3	3558	655
422	Owens Valley Multiple Zone - Archery	5	4	1	711	122
300	Siskiyou - General Methods	20	15	5	751	45
312	Tinemaha - Period 1 - Archery	1	0	1	99	3
426	Tinemaha Period 2 - General Methods	1	0	1	168	13
320	Tinemaha Mountain Period 3 - General Methods	1	0	1	87	3
321	Tinemaha Mountain Period 4 - General Methods	1	0	1	109	3
315	West Tinemaha Period 1 - General Methods	2	1	1	286	64
323	Whitney Period 2 - General Methods	1	0	1	103	11
352	Whitney Period 3 - General Methods	1	0	1	257	11

2015 ELK TAG DRAWING STATISTICS, CONTINUED

Hunt Code	Hunt Tag Description	Tag Quota	Preference Point Quota	Random Quota	Total Applicants	Maximum Point Applicants*
EITHER SEX						
449	Fort Hunter Liggett - Archery	2	1	1	319	21
303	Marble Mountain - Muzzleloader/Archery	5	4	1	288	10
411	Northeastern California - Archery	10	8	2	567	41
483	Northwestern California - General Methods	45	34	11	1483	91
497	San Luis Reservoir - General Methods	5	4	1	568	40

*In the 2015 Big Game Drawing, the maximum preference points a hunter could have was 13. The maximum preference points a hunter could have and be eligible for an Apprentice Hunt was five (5).



Steve and Caden Cramer

2016 PROPOSED* ELK HUNTS

Hunt Name	Hunt Code	2015 Apps./Tags	2015 Hunter Success (%)	2016 Tag Quota	2016 Hunt Dates
Point Only	499	7098	Enter this hunt code to earn a point only, applications must be submitted before midnight on June 2, 2016.		
APPRENTICE HUNTS - Applicants must be under 18 years of age and possess a Junior Hunting License. Licensed adult chaperone required (CCRT14-708.11(b)(2)).					
Marble Mountains either-sex	408	222/2	100	2	Sept. 7-18
Northeastern California either-sex	409	545/2	100	2	Sept. 14-25
Cache Creek Period 1 bull	484	257/1	100	1	Oct. 8-23
La Panza Period 1 antlerless	464	65/1	100	1	Oct. 8-30
Grizzly Island Period 1 antlerless	466	267/3	100	3	Aug. 16-19
Grizzly Island Period 2 spike bull	469	193/2	100	2	Aug. 18-21
Grizzly Island Period 3 antlerless	353	N/A	N/A	2	Aug 23-26
Grizzly Island Period 4 spike bull	354	N/A	N/A	2	Aug 25-28
Fort Hunter Liggett Period 1 antlerless	471	91/1	0	1	Dec. 17-Jan 2
Fort Hunter Liggett Period 3 bull	472	469/1	100	1	Dec. 17-Jan 2

Elk hunt closed due to military training

408 See hunt 301 & 302 for comments
409 See hunt 304 & 305 for comments
484 See hunt 406 for comments
464 See hunt 417 and 419 for comments

464 See hunt 417 and 419 for comments
353, 354, 466, and **469** See hunts 433 and 437 for comments
471 and **472** See hunt 444 and 447 for comments

Hunt Name	Hunt Code	2015 Apps./Tags	2015 Hunter Success (%)	2016 Tag Quota	2016 Hunt Dates
A R C H E R Y					
Northeastern CA Archery either-sex	411	567/10	30	10	Aug. 31-Sept 11
Owens Valley Multiple Zone Archery bull	422	711/5	100	3	Aug. 13-21
Tinemaha Period 1 Archery bull	312	99/1	0	1	Sept. 10-25
Fort Hunter Liggett Archery only either-sex	449	319/2	50	2	July 27-Aug 4
Fort Hunter Liggett Archery only antlerless	450	63/4	25	4	Sept 28-Oct 6

Elk hunt closed due to military training

411 See hunt 304 and 305 for comments. Archery season typically not during the rut. (530) 233-3581.
422 Good access to public land. (760) 872-1171. Tag is valid in Bishop, Independence and Lone Pine.

312 See hunt 313 for comments
449 See hunt 444 and 448 for comments
450 See hunt 444 and 448 for comments

Hunt Name	Hunt Code	2015 Apps./Tags	2015 Hunter Success (%)	2016 Tag Quota	2016 Hunt Dates
M U Z Z L E L O A D E R / A R C H E R Y					
Marble Mountains Muzzleloader/Archery either-sex	303	288/5	20	5	Oct. 29- Nov. 6

2016 PROPOSED* ELK HUNTS, CONTINUED

Hunt Name	Hunt Code	2015 Apps./Tags	2015 Hunter Success (%)	2016 Tag Quota	2016 Hunt Dates
M U Z Z L E L O A D E R					
Independence Period 1 Muzzleloader bull	308	117/2	100	1	Sept. 10-25

303 See hunt 301 and 302 for comments

308 See hunt 339 and 340 for comments

Hunt Name	Hunt Code	2015 Apps./Tags	2015 Hunter Success (%)	2016 Tag Quota	2016 Hunt Dates
R O O S E V E L T					
Siskiyou antlerless	401	223/20	35	20	Sept. 7-18
Siskiyou bull	300	751/20	80	20	Sept. 7-18
Northwestern California bull	355	N/A	N/A	15	Sept. 7-29
Marble Mountain antlerless	301	199/10	20	10	Sept. 7-18
Marble Mountain bull	302	1731/35	60	35	Sept. 7-18

401 and **300** Very limited opportunity on public land; elk present on a few private lands with restricted access requiring trespass fees. Hunters seeking private land opportunities recommended to make previous arrangements before applying. Deer and elk seasons partially overlap (530) 598-6820.

355 Very Limited opportunity on public land; Hunters are responsible for obtaining landowner permission to access private land. Landowners may charge a trespass fee. Deer and elk seasons partially overlap (707) 445-6497.

301 and **302** Opportunity on public land; limited opportunity on private land with restricted access requiring trespass fee. Hunters seeking private land opportunities are recommended to make previous arrangements before applying. Difficult terrain requiring hiking and elevation gain. Deer and elk seasons partially overlap (530) 598-6820. High daytime temperatures to be expected, pack animals recommended. Difficult hunt.

Hunt Name	Hunt Code	2015 Apps./Tags	2015 Hunter Success (%)	2016 Tag Quota	2016 Hunt Dates
R O O S E V E L T / T U L E					
Mendocino bull	328	205/2	100	2	Sept. 21-Oct. 2

328 Elk entirely on private property. Permission from landowner required. CDFW does NOT have list of landowners who would allow access. Hunters seeking private land

opportunities recommended to make previous arrangements before applying. Access fee may apply (707) 456-0329.

Hunt Name	Hunt Code	2015 Apps./Tags	2015 Hunter Success (%)	2016 Tag Quota	2016 Hunt Dates
R O C K Y M O U N T A I N					
Northeastern CA antlerless	304	400/10	30	10	Sept. 14-25
Northeastern CA bull	305	3558/15	73	15	Sept. 14-25

304 and **305** Opportunity for elk on public land; some on private land with restricted access. Deer and elk seasons partially overlap. (530) 233-3581.

2016 PROPOSED* ELK HUNTS, CONTINUED

Hunt Name	Hunt Code	2015 Apps./Tags	2015 Hunter Success (%)	2016 Tag Quota	2016 Hunt Dates
T U L E					
Cache Creek Period 1 bull	406	653/3	100	2	Oct. 10-25
Cache Creek Period 2 antlerless	416	146/3	33	2	Oct. 17-Nov 1
La Panza Period 1 antlerless	417	122/5	80	5	Oct. 8-30
La Panza Period 1 bull	419	437/6	80	6	Oct. 8-30
La Panza Period 2 antlerless	418	139/6	83	6	Nov. 12-Dec 4
La Panza Period 2 bull	420	537/6	83	6	Nov. 12-Dec 4
Independence Period 2 antlerless	339	N/A	N/A	1	Oct. 1-9
Independence Period 2 bull	340	413/2	100	1	Oct. 1-9
Independence Period 3 antlerless	336	N/A	N/A	1	Oct. 15-23
Lone Pine Period 2 bull	486	N/A	N/A	2	Oct. 1-9
Lone Pine Period 3 bull	496	781/2	100	1	Oct. 15-23
Lone Pine Period 4 antlerless	425	N/A	N/A	1	Nov 5-13
Grizzly Island Period 1 antlerless	433	227/5	100	6	Aug. 16-19
Grizzly Island Period 2 antlerless	436	273/8	100	2	Aug. 18-23
Grizzly Island Period 2 spike bull	437	75/3	100	2	Aug. 18-23
Grizzly Island Period 3 antlerless	439	372/8	100	6	Aug. 23-26
Grizzly Island Period 4 antlerless	442	257/8	100	2	Aug 25-28
Grizzly Island Period 4 spike bull	350	N/A	N/A	2	Aug 25-28
Grizzly Island Period 5 antlerless	443	125/8	100	8	Aug 30-Sept 2
Grizzly Island Period 7 antlerless	356	N/A	N/A	8	Sept 6-9
Grizzly Island Period 8 spike bull	357	N/A	N/A	6	Sept 8-11
Grizzly Island Period 9 antlerless	358	N/A	N/A	8	Sept 13-16
Grizzly Island Period 10 bull	359	N/A	N/A	3	Sept 15-18
Grizzly Island Period 11 antlerless	360	N/A	N/A	8	Sept 20-23
Grizzly Island Period 12 spike bull	361	N/A	N/A	2	Sept 22-25
Grizzly Island Period 12 bull	362	N/A	N/A	2	Sept 22-25
Grizzly Island Period 13 antlerless	363	N/A	N/A	8	Sept 27-30
Fort Hunter Liggett Period 1 antlerless	444	196/4	75	4	Nov. 3-11
Fort Hunter Liggett Period 2 antlerless	Elk hunt closed due to military training				
Fort Hunter Liggett Period 3 bull	447	1518/4	100	4	Dec. 17-Jan 2

406 and **416** Elk on public and private land. Significant numbers of elk on private land where access may be restricted.
417, 418, 419 and **420** Elk on public and private land (private land access may be restricted or access fee required). Access restrictions on CDFW properties. Low probability of hunter success. Off road travel is prohibited on Carrizo Plain National Monument. Mandatory hunter orientation prior to hunt day. Public land access limitations apply to CDFW wildlife areas. (831) 649-2870.
336, 339, 340, 425, 486, and **496** Good access to public land. (760) 872-1171.

350, 356 - 363, 433, 436, 437, 439, 442, and **443** Hunt CDFW land only. Hunters strongly encouraged to bring one non-hunting companion for assistance. Mandatory hunter orientation prior to hunt day (707) 425-3828 or (707) 944-5500.
444, 448, and **447** Tag holders must purchase hunting pass from the base. Season dates and hunt areas subject to modification by Base Commander due to military training. Mandatory hunter orientation prior to each hunt (831) 386-2214. Areas designated for archery and muzzleloader may be open during general elk hunts.

2016 PROPOSED* ELK HUNTS, CONTINUED

Hunt Name	Hunt Code	2015 Apps./Tags	2015 Hunter Success (%)	2016 Tag Quota	2016 Hunt Dates
East Park Reservoir bull	461	889/2	100	2	Sept 3-29
East Park Reservoir antlerless	463	95/2	100	2	Sept 3-29
San Luis Reservoir either-sex	497	568/5	100	5	Oct. 1-23
Bear Valley antlerless	329	37/2	50	1	Oct. 8-16
Bear Valley bull	330	198/3	100	2	Oct. 8-16
Lake Pillsbury antlerless	331	233/4	100	4	Sept. 7-16
Lake Pillsbury bull	332	682/2	100	2	Sept. 26-Oct 5

*Subject to final approval by the California Fish and Game Commission on April 14, 2016. For information on approved tag quotas and season dates, please contact your nearest CDFW license sales office after April 18, 2016; or go online at: www.wildlife.ca.gov/Hunting/Elk

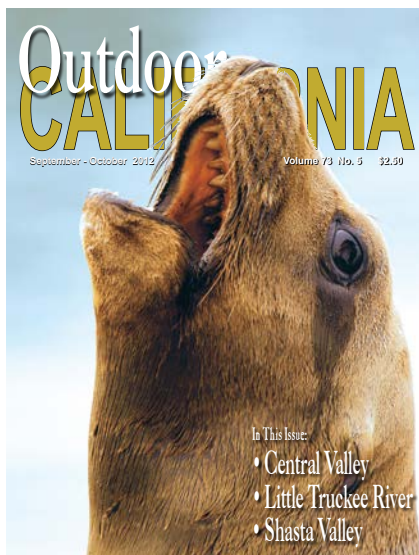
461 and **463** Colusa County Ordinance prohibits firearms (including archery equipment) on East Park Reservoir (Bureau of Reclamation, BOR) property. A variance allows the use of muzzleloaders (as defined in CCRT14-353). East Park Reservoir (BOR) property will be open to bull hunting Sept 12-15; and antlerless hunting Sept 19-22 & Sept 26-29. Other restrictions apply. Mandatory orientation prior to hunt day (916) 445-9992.

497 Very limited opportunity on public land. State Park property not open to hunting. Public land method restricted to archery. Private land access may be restricted or access fee

required. Hunters seeking private land opportunities recommended to make previous arrangements before applying. Low probability of hunter success (916) 445-9992.

329 and **330** Elk almost entirely on private property. Permission from landowner required. CDFW does NOT have list of landowners who would allow access. Hunters seeking private land opportunities recommended to make previous arrangements before applying. Access fee may apply. (916) 445-9992.

331 and **332** Good access to public land. (916) 445-9992.



Explore the exciting world of California's great outdoors in the award-winning Outdoor California Magazine!

SUBSCRIBE TODAY!
wildlife.ca.gov/Publications/Outdoor-California/Subscribe



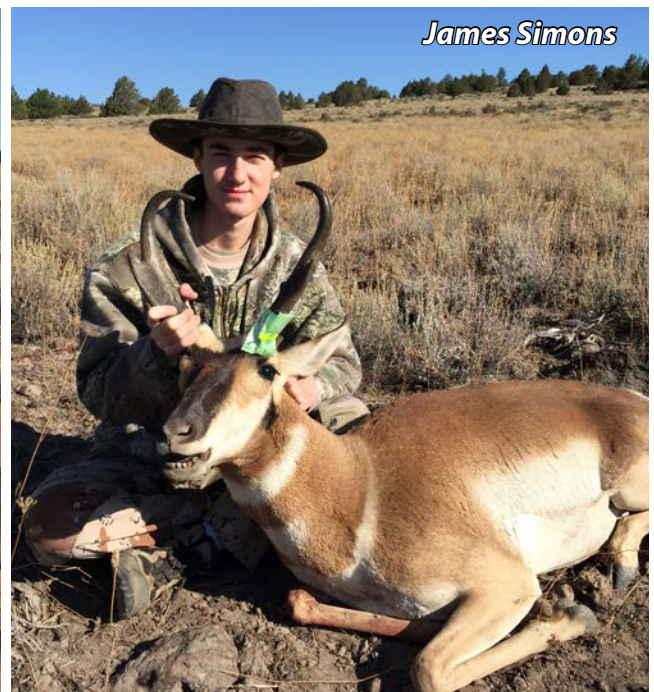
2015 ANTELOPE TAG DRAWING STATISTICS

Hunt Code	Hunt Tag Description	Tag Quota	Preference Point Quota	Random Quota	Total Applicants	Maximum Point Applicants*
799	Preference Point Only	0	0	0	7103	578
APPRENTICE						
734	Zone 3 - Likely Tables - General Methods, Either Sex	5	4	1	612	0
790	Zone 4 - Lassen - General Methods, Either-Sex	5	4	1	649	0
766	Zone 5 - Big Valley - General Methods - Either Sex	1	0	1	144	0
780	Zone 6 - Surprise Valley - General Methods, Either Sex	4	3	1	278	0
BUCK						
720	Zone 2 - Clear Lake - General Methods	15	12	3	991	70
728	Zone 2 - Clear Lake - Archery	1	0	1	70	2
730	Zone 3 - Likely Tables Period 1 - General Methods	40	30	10	2933	252
732	Zone 3 - Likely Tables Period 2 - General Methods	40	30	10	2522	187
738	Zone 3 - Likely Tables - Archery	10	8	2	322	4
740	Zone 4 - Lassen Period 1 - General Methods	45	34	11	3676	379
742	Zone 4 - Lassen Period 2 - General Methods	45	34	11	2466	170
745	Zone 4 - Lassen - Archery	10	8	2	419	11
750	Zone 5 - Big Valley - General Methods	20	15	5	871	47
755	Zone 5 - Big Valley - Archery	1	0	1	103	0
760	Zone 6 - Surprise Valley - General Methods	10	8	2	1172	110
765	Zone 6 - Surprise Valley - Archery	1	0	1	87	0

*In the 2015 Big Game Drawing, the maximum preference points a hunter could have was 13. The maximum preference points a hunter could have and be eligible for an Apprentice Hunt was five (5).



Brian Rushton



James Simons

2016 PROPOSED* ANTELOPE HUNTS

	Hunt Name	Hunt Code	2015 Apps/Tags	2015 Hunter Success (%)	2016 Tag Quota	2016 Hunt Dates
	Point Only	799	Enter this hunt code to earn a point only, applications must be submitted before midnight on June 2, 2016.			

APPRENTICE HUNTS	Applicants must be under 18 years of age and possess a Junior Hunting License. A licensed adult chaperone is required (CCR T14-708.10(b)(2)).					
	Zone 3 - Likely Tables Period 1 Either-Sex	734	612/5	60	5	Aug. 20-28
	Zone 4 - Lassen Period 1 Either-Sex	790	649/5	100	5	Aug. 20-28
	Zone 5 - Big Valley Either-Sex	780	144/1	100	1	Aug. 20-28
	Zone 6 - Surprise Valley	766	278/4	75	4	Aug. 20-28

734 See hunt 730 for comments

790 See hunt 740 for comments

780 To hunt Ash Creek Wildlife Area call (530) 294-5824. To

hunt the wildlife area a mandatory hunter orientation prior to hunt day is required. See hunt 750 for comments.

766 See hunt 760 for comments

ARCHERY HUNTS	Zone 2 Clear Lake Archery Buck	728	70/1	0	1	Aug. 6-14
	Zone 3 Likely Tables Archery Buck	738	322/10	50	15	Aug. 6-14
	Zone 4 Lassen Archery Buck	745	419/10	50	10	Aug. 6-14
	Zone 5 Big Valley Archery Buck	755	103/1	0	1	Aug. 6-14
	Zone 6 Surprise Valley Archery Buck	765	87/1	0	1	Aug. 6-14

728 See hunt 720 for comments

738 See Hunt 730 and 732 for comments

745 See Hunt 740 and 742 for comments

755 See Hunt 750 and 752 for comments

765 See Hunt 760 for comments

GENERAL METHODS HUNTS	ZONE 1 - MOUNT DOME					
	General Buck	710	N/A	N/A	2	Aug. 20-28
	ZONE 2 - CLEAR LAKE					
	General Buck	720	991/15	87	15	Aug. 20-28
	ZONE 3 - LIKELY TABLES					
	Period 1 General Buck	730	2933/40	83	45	Aug. 20-28
	Period 2 General Buck	732	2522/40	93	45	Sept. 3-11
	ZONE 4 - LASSEN					
	Period 1 General Buck	740	3676/45	91	45	Aug. 20-28
	Period 2 General Buck	742	2466/45	96	45	Sept. 3-11
	ZONE 5 - BIG VALLEY					
	General Buck	750	871/20	90	20	Aug. 20-28
	ZONE 6 - SURPRISE VALLEY					
	General Buck	760	1172/10	90	10	Aug. 20-28

*Subject to final approval by the California Fish and Game Commission on April 14, 2016. For information on approved tag quotas and season dates, please contact your nearest CDFW license sales office after April 18, 2016; or go online at: www.wildlife.ca.gov/Hunting/Pronghorn

710 Antelope on public (Klamath NF (530) 824-6131; Shasta Trinity NF(530)226-2500; & BLM (530)224-2100) and private land. Private access may be restricted or fee required. CDFW contact (530)598-6820

720 Antelope on public (Modoc NF- (530) 233-5811; BLM - (530) 233-4666) and private land. Private access may be restricted or fee required. Tag holders may submit an application for hunting access to Peninsula "U" portion of Clear Lake NWR. CDFW contact: (530) 233-3581.

730 and 732 Antelope on public (Modoc NF- (530) 233-5811; BLM - (530) 233-4666) and private land. Private access may be restricted or

fee required. CDFW contact: (530) 233-3581.

740 and 742 Antelope on public (Lassen NF - (530) 257-2151; BLM - (530) 257-0456) and private land. Private access may be restricted or fee required. CDFW contact: (530) 254-6808.

750 Antelope on public (Modoc NF - (530) 233-5811; Lassen NF - (530) 257-2151; BLM - (530) 233-4666) and private land. Private access may be restricted or fee required. CDFW contact: (530) 254-6808.

760 Antelope on public (Modoc NF - (530) 233-5811; BLM - (530) 279-6101) and private land. Private access may be restricted or fee required. CDFW contact: (530) 233-3581.

2015 BIGHORN SHEEP TAG DRAWING STATISTICS

Hunt Code	Hunt Tag Description	Tag Quota	Preference Point Quota	Random Quota	Total Applicants	Maximum Point Applicants
599	Preference Point Only	0	0	0	4396	342
501	Zone 1 - Marble/Clipper Mountains	3	2	1	3119	702
503	Zone 3 - Clark And Kingston Mountain Ranges	1	0	2	1002	155
504	Zone 4 - Orocopia Mountains	1	0	1	737	101
505	Zone 5 - San Gorgonio Wilderness	2	1	1	1620	330
507	Zone 7 - White Mountains	1	0	1	1284	80
508	Zone 8 - South Bristol Mountains	1	0	1	499	58
509	Zone 9 - Cady Mountains	2	1	4	1640	397

2016 PROPOSED* BIGHORN SHEEP HUNTS

Hunt Code	Hunt Name	2015 Applicants/Tags	2015 Hunter Success (%)	2016 Tag Quota	2016 Hunt Dates
599	Point Only	Enter this hunt code to earn a point only.		To earn a point, applications must be submitted before midnight on June 2, 2016.	
501	Zone 1 - Marble/Clipper Mountains	3119/3	100	3	Dec. 3 - Feb. 5
502	Zone 2 - Kelso Peak/Old Dad Mountains	No Hunt	0	1	Dec. 3 - Feb. 5
503	Zone 3 - Clark/Kingston Mountain Ranges	1002/1	100	2	Dec. 3 - Feb. 5
504	Zone 4 - Orocopia Mountains	737/1	100	1	Dec. 3 - Feb. 5
505	Zone 5 - San Gorgonio Wilderness	1620/2	100	2	Dec. 18 - Feb. 19
506	Zone 6 - Sheep Hole Mountains	No Hunt	0	0	No tags proposed for 16/17
507	Zone 7 - White Mountains	1284/1	0	3	Aug 20. - Sep. 25
508	Zone 8 - South Bristol Mountains	499/1	100	1	Dec. 3 - Feb. 5
509	Zone 9 - Cady Mountains	1640/2	100	4	Dec. 3 - Feb. 5

*Subject to final approval by the California Fish and Game Commission on April 14, 2016. For information on approved tag quotas and season dates, please contact your nearest CDFW license sales office after April 18, 2016; or go online at: www.wildlife.ca.gov/Hunting/Bighorn-Sheep

501, 502, 503 and **504** Vehicle access limited to designated routes.

505 Access extremely difficult. Travel by horseback recommended. Access fees may be required on private land.

506 Extremely rugged terrain. Vehicle access very limited.

507 Extremely rugged terrain at very high elevations. Altitude sickness has affected previous hunters. Physical condition should be above average. Vehicle access limited to none (760) 872-6585.

508 and **509** Vehicle access limited to designated routes.



REPORT POACHERS AND POLLUTERS

1 (888) 334-CALTIP

(1 (888) 334 2258)

WILD PIG HUNTING

WILD PIG TAGS

Resident and nonresident hunters, 12 years of age and older, with a valid annual California hunting license may purchase wild pig hunting tags. There is no limit on the number of wild pig tags one person may purchase; however, tag fees are nonrefundable, and tags cannot be transferred from one person to another. For tagging requirements, see page 12.

WILD PIG HUNTING SEASON

Wild pig tags are valid throughout the hunting year, commencing on July 1 and ending on June 30 the following year. There is no daily bag or possession limit for wild pig. For more information on pig hunting and regulations, please go to CDFW's website at www.wildlife.ca.gov/Hunting/Wild-Pig.

LEGAL METHODS OF TAKE

Generally, wild pigs may only be taken using archery equipment, rifles, .40 caliber or greater muzzleloaders, shotguns and pistols, or revolvers. Knives and spears are not legal methods of take for wild pigs in California. Please see the California Hunting Regulations for Mammals and Furbearers (CCR T14-353) for detailed information.

WILD PIG HUNTING OPPORTUNITIES

Cañada de los Osos Ecological Reserve

CDFW provides limited-permit apprentice pig hunting opportunities at Cañada de los Osos Ecological Reserve near Gilroy. The hunts are conducted in coordination with volunteers from the California Deer Association (CDA) who operate the program.

Hunts are scheduled in the spring and fall, and applicants may only apply online by visiting www.wildlife.ca.gov/Regions/3/Hunts/CDLO. Due to the high demand, hunters who are unable to attend the hunt for which they are drawn must notify our office within 5 days of being notified that they were successfully drawn. Please only apply for hunt dates you can attend.

Successful applicants will be assigned a volunteer from the CDA who will act as their guide for the duration of the hunt. Cañada de los Osos falls within the Ridley-Tree Condor Preservation Area and non-lead ammunition is required for all big game hunts.

SHARE Program for Private Lands Hunting

CDFW provides limited entry permitted hunting opportunities on private and public lands through the SHARE Program. See page 39 for more information and pig hunting opportunities offered through this program.

MORE INFORMATION

Additional information about these hunts and others may be obtained by visiting CDFW's special pig hunts webpage: www.wildlife.ca.gov/Hunting/Wild-Pig#194443-hunts. The CDFW continues to work with resource conservation partners to provide these special pig hunts. Additional special opportunities will be announced on this webpage as they become available.

TOP 15 COUNTIES FOR WILD PIG HUNTING

COUNTY	3-year average reported take
Kern	599
Monterey	566
San Luis Obispo	361
Mendocino	262
Sonoma	230
Tehama	216
San Benito	130
Colusa	111
Lake	97
Fresno	83
Santa Clara	77
Glenn	72
Santa Barbara	65
Tulare	58
Shasta	43



CALIFORNIANS TURN IN POACHERS & POLLUTERS
1(888) 334-CALTIP
 Confidential Secret Witness Program
 24 Hours/7 days a week
 California Department of Fish and Wildlife



Scott and Graham Braly



Andrew Wilson



Craig Edwards



Gregory Hartman



Amy Osbourn

BEAR HUNTING

BEAR TAGS

To hunt bear in California, all residents and nonresidents must be age 12 or older and have both a valid hunting license and a bear tag. Bear tags can be purchased from any CDFW license sales office, license agent, online, or by telephone sales. Hunters may purchase only one bear tag per hunting license year.

BAG AND POSSESSION LIMITS

No person may possess more than one bear per hunting license year.

BEAR HUNTING SEASONS

Archery bear season in all bear zones opens August 20, 2016, and runs through September 11, 2016.

The general season for black bears opens with the general deer hunting seasons in deer zones A, B, C, D, X8, X9A, X9B, X10 and X12 and extends through December 25, 2016. In the remaining deer X zones, the season opens October 8, 2016, and extends through December 25, 2016. CDFW shall close the season earlier if 1,700 bears have been reported taken. For daily updates on reported bear harvest, visit our website: www.wildlife.ca.gov/Hunting/Bear or call toll-free (888) 277-6398.

SUMMARY OF BEAR REGULATIONS

It is unlawful to take a cub or a sow accompanied by one or more cubs.

It is unlawful to feed or bait bears for the purpose of hunting them. It is unlawful to hunt bear over bait, or within a 400-yard radius of a garbage dump or bait.

Only CDFW employees may validate bear tags. Bear tags must be validated before the bear can be transported except for the purpose of taking it directly to the nearest person authorized to validate the tag. If Department offices are closed, the bear tag shall be validated within one (1) business day of transporting the bear from the point where taken.

Every licensed bear hunter who takes a bear must immediately return the validated report card portion of the bear tag. The tag may be presented to a CDFW office/officer, returned via mail, or reported online at www.wildlife.ca.gov/tagreporting.

Any bear hunter who utilizes the services of a guide must verify that the guide has a valid guide's license and must write the guide's license number on the bear tag in the space provided.

Every licensed bear hunter who is unsuccessful in taking bear must return the report card portion of the bear tag by Feb. 1, **of the current license year**. The tag may be

presented to a CDFW office/officer, returned via mail, or reported online at www.wildlife.ca.gov/tagreporting.

It is illegal to sell parts of any bear in California, including portions of legally-taken bears imported from other states. However, you have the right to retain any and all parts of the bear you take, except the skull, which becomes the property of CDFW.

MANDATORY PRESENTATION OF BEAR SKULL

Any person who takes a bear shall present the skull (even if damaged) to a CDFW office/officer within 10 days of taking the bear. The skull shall become the property of CDFW. The portion of the skull not needed for scientific purposes will be returned (CCR T14-367.5). Please see appointment section and office phone numbers on the next page.

IMPORTANT! Place a stick or other object in the bear's jaws so that the mouth remains open. Do not present frozen skulls to have the premolar tooth removed. Premolars break easily when the skull is frozen.

Whether or not you are successful, all bear tags must be returned to the CDFW no later than February 1, 2017. If you fail to return your 2016 bear tag, even if you did not kill a bear, you will be in violation of (CCR T14-708.12(e)).

Please call ahead before bringing your bear skull to a CDFW office.

BEAR TAG VALIDATION AND TOOTH EXTRACTION

If you kill a bear, you must have the tag countersigned (validated) by a CDFW employee. Bear tags must be validated prior to transporting the bear, except for the purpose of taking the bear to the nearest person authorized to validate the tag en route to your home from the point where the bear was taken. All CDFW offices will validate bear tags. The report card portion must be returned immediately after tag validation.

CDFW is requiring a premolar tooth be extracted from EVERY bear taken during the hunting season. This will provide wildlife biologists with sufficient information to refine bear management. The premolar tooth will be processed by cutting it in cross section and examining it under a microscope. The bear's age can then be determined by counting annual growth rings, similar to tree rings. Information on age of harvested bears through tooth aging will be posted online at www.wildlife.ca.gov/Hunting/Bear.

BEAR TAG VALIDATION AND TOOTH EXTRACTION APPOINTMENTS

If you cannot locate a CDFW employee, please call one of the offices listed below and they will provide assistance.

All CDFW offices will validate bear tags.

Please call the following locations for an appointment to have your bear tag validated and/or a tooth pulled. Please leave your bear skull in your vehicle until you check in for your appointment.

Redding (530) 225-2300
Rancho Cordova (Sacramento) (916) 358-2900
Yountville (707) 944-5500
Fresno (559) 243-4005 Ext.132 or Ext.133
San Diego (858) 467-4201
Ontario (909) 484-0167

Bishop (760) 872-1171
Crystal Lake Hatchery (530) 335-4111
Darrah Springs Hatchery (530) 474-3141
Eureka (707) 445-6493
Feather River Hatchery (530) 538-2222
Iron Gate Hatchery (530) 475-3420
Kern River Hatchery (760) 376-2846
La Grange (209) 853-2533 Ext. 6
Los Alamitos (562) 596-3885
Los Banos Wildlife Area (209) 826-0463
Mad River Fish Hatchery (707) 822-0592
Mendota Wildlife Area (559) 655-4645
Merced River Hatchery (209) 563-6410
Moccasin Hatchery (209) 989-2312
Mokelumne River Hatchery (209) 759-3383
Monterey (831) 649-2870
Mt. Shasta Hatchery (530) 926-2215
Red Bluff Screen Shop (530) 528-9406
Red Bluff Field Office (530) 529-7162
Shasta Valley Wildlife Area (530) 459-3926
Trinity River Hatchery (530) 778-3931
Warm Springs Hatchery (707) 433-6325
Yreka Screen Shop (530) 841-2555

DEFINITIONS

Bear cub: a bear less than one year old or weighing less than 50 lbs. CCR T14-365(c).

Bait Related to Bears: Any material capable of attracting a bear. CCR T14-365(e).

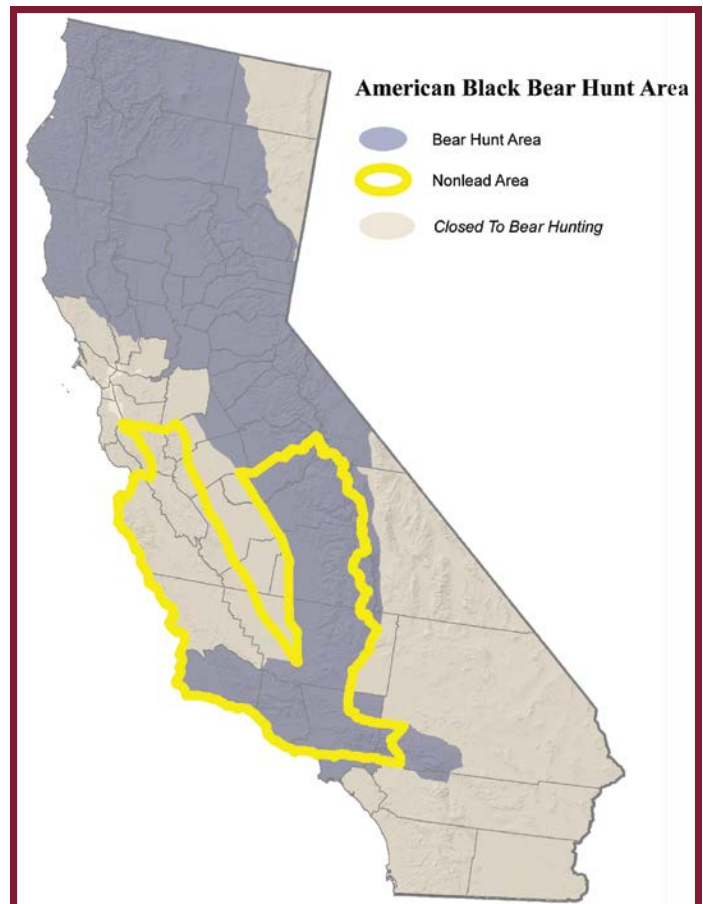
Baited Area: Any area where shelled, shucked or unshucked corn, wheat or other grains, salt, or other feed whatsoever capable of luring, attracting, or enticing such birds or mammals is directly or indirectly placed, exposed, deposited, distributed, or scattered, and such area shall remain a baited area for ten days

following complete removal of all such corn, wheat or other grains, salt, or other feed. CCR T14-257.5.

Note: Scents sprayed into the air and allowed to disperse over a wide area in the wind generally do not fall within the definition of bait. Scent products that have to be applied directly to a surface such as a rock, tree or bush generally cause the game to come to that specific place, and if they feed on it, it is bait.

USE OF DOGS FOR PURSUIT/TAKE

Effective January 1, 2013, the use of dogs to pursue/take bears is unlawful for sport-hunting purposes.



It is unlawful to use, or possess with any firearm capable of firing, any projectile(s) not certified as nonlead within the California Condor Range and when taking all wildlife on any wildlife area or ecological reserve (CCRT14 - 250.1, 551, 552, and 630; FGC - 3004.5).

HUNTING OUT OF STATE?

It is the responsibility of out-of-state hunters to be aware of all laws and regulations pertaining to the state in which they are going to hunt. Proof of Hunter Education is required. Take note that the California equivalency certificate will not be accepted as evidence of hunter education.

CHRONIC WASTING DISEASE

Chronic Wasting Disease, a fatal disease that affects deer and elk, has been detected in wild herds in eleven states. To prevent the introduction of Chronic Wasting Disease into California, the CDFW has imposed tight restrictions on the importation of hunter-harvested deer and elk into California.

“NO SKULL, NO BACKBONE”

When returning home with deer and elk harvested out of state, hunters must follow California’s strict regulations to avoid bringing CWD into our state. The California regulations can be summarized in one phrase: “No skull, no backbone.”

FOLLOW OTHER STATES’ CWD REGULATIONS

If you will be hunting out of state in a known CWD endemic area, you should receive information at the time you receive your hunting tag(s) regarding disposal of the carcass remains and mandatory or voluntary CWD testing.

HANDLE GAME WITH CAUTION

- Wear rubber gloves when field dressing carcasses;
- Bone out meat from the animal;
- Minimize the handling of brain and spinal cord, eyes, spleen, and lymph nodes and avoid consuming these tissues;
- Wash hands and instruments thoroughly after field dressing is completed.

CALIFORNIA'S CWD REGULATIONS

No hunter harvested deer or elk (cervid) carcass or parts of cervid carcass shall be imported into the State, except for the following body parts: boned-out meat and commercially processed cuts of meat, portions of meat with no part of the spinal column or head attached, hides with no heads attached, clean skull plates (no meat or tissue attached) with antlers attached, antlers with no meat or tissue attached, finished taxidermy heads, upper canine teeth (buglers, whistlers, ivories). CCRT14-712.

LACEY ACT

Transporting illegally taken game across state lines is a violation of the federal Lacey Act (T16, US Code 1406). Such transport, if done in connection with commercial activity, may be classified as a felony.

INTERSTATE WILDLIFE

VIOLATOR COMPACT

The Interstate Wildlife Violator Compact (IWVC) is an agreement between 26 states, which allows for the reciprocal recognition of hunting, fishing and trapping license suspensions. If your license privileges have been suspended by another state, the suspension may be recognized here in California. For example, if your sport fishing, hunting or trapping privileges have been suspended in Colorado for five years, your privileges may also be suspended for five years in California or any of the states participating in the IWVC. The purchase of licenses or tags during the term of the suspension is a violation of the law and may result in prosecution.



A deer and elk affected by Chronic Wasting Disease.

Check out our CDFW video on how to process your deer or elk to comply with CWD Regulations:

www.youtube.com/watch?v=f-t3iCZcovM

IMPORTATION LAW: SECTION 2353 FISH & GAME CODE

Birds, mammals, fish, reptiles, or amphibians shall not be imported or possessed in this state unless all of the following requirements are met:

1. The animals were legally taken and legally possessed outside of this state,
2. The Fish and Game Code or Title 14 regulations do not expressly prohibit their possession in this state, and
3. A declaration is submitted to the department or a designated state or federal agency at or immediately before the time of entry, in the form and manner prescribed by the department.

Declaration is not required if shipped by common carrier under a bill of lading.

This form may be photocopied. The original copy of the declaration form shall be retained by the person importing the fish or game into the state. One copy shall be mailed to the CDFW, 1416 Ninth Street, Sacramento, CA 95814, within 24 hours after entering the State. One copy shall be deposited at the point of entry with any state or federal agency or officer, and one copy shall remain with the fish or game if transported by other than owner or common carrier.

"Point of entry" refers to the city or town nearest your point of entry into California.



STATE OF CALIFORNIA
California Natural Resources Agency
DEPARTMENT OF FISH AND WILDLIFE

DECLARATION FOR ENTRY INTO CALIFORNIA OF GAME, FISH, BIRDS, OR ANIMALS

Description	Number	Pounds
_____	_____	_____
_____	_____	_____
_____	_____	_____

The above species of fish and/or game were legally taken and possessed by

in the County of _____ State of _____

It is illegal to import any animal for commercial purposes prohibited by California law or regulation.

Hunting License Number _____

Angling License Number _____

Vehicle License Number _____

Game Tag Number _____

Signature _____

Address _____

City _____

Entry into California via Highway _____

Date of Entry _____

FREQUENTLY ASKED QUESTIONS

LICENSE REQUIREMENTS

Q. Why do I need to show identification when purchasing a license?

A. When you purchase a license you are required to provide identification or a previously issued ALDS license. This ensures CDFW will have an accurate record of your license history and help CDFW serve you better in:

- Tracking customer preference points for CDFW's annual Big Game Drawing.
- Purchasing duplicate licenses.
- Wildlife management efforts, such as harvest reporting.

CDFW does not share or sell customers' personal information.

Q. I tried to purchase my hunting license online, but the online sales system says 'Evidence of Hunter Education Required'. I have purchased a hunting license through the ALDS before, so why is it not on file?

A. You have created a second customer profile (another GO ID) that is not connected to your license history and hunter education record. Log out of the online license sales system and find a previously issued ALDS hunting license or drawing receipt and log in again. Enter the last name, GO ID, and date of birth as it is printed on your license document. Once you have logged into the account that has your hunter education, you will be able to purchase a hunting license and enter the drawing. If you are unable to resolve this issue yourself, contact the Department's Internet Sales Help Desk at (916) 928-6882 during regular business hours (Monday-Friday, between 8:00 am to 5:00 pm) for assistance.

IMPORTANT: To be included in the Big Game Drawing, submit your application by midnight on June 2nd. If it is June 2nd and you are unable to resolve this issue, go to a license sales agent. Provide your proof of hunter education and customer information for the license sales agent and apply for the Big Game Drawing there.

Q. Do I still need to have my license in possession when hunting or fishing?

A. Under California law you are required to carry your license, validation, report card, or tag with you when you are hunting or fishing.

Q. Do I still have to punch tags and fill out report cards?

Yes. All requirements for tagging, identifying and verifying take still apply. Now, you may either report your harvest online at: www.wildlife.ca.gov/tagreporting or mail in the harvest report cards.

What will happen if I do not report my deer tag(s) or report my tag(s) late?

All deer tag holders who do not report their 2016 deer tag(s) by the regulatory deadline of January 31st or report them late will be assessed a non-reporting penalty of \$21.60 when purchasing their 2017 deer tag drawing application or deer tag.

NOTE: Mandatory reporting applies to all deer tags issued. Hunters who are issued two deer tags and report one but not the other will still be assessed the non-reporting penalty.

LIFETIME LICENSES

Q. How do I claim my lifetime hunting license online?

A. You may claim your license online at: www.ca.wildlifelicense.com/InternetSales. Log in using your last name, date of birth and GO ID (from your previous hunting license). Select 'Purchase Licenses' from the menu at the top of the page. Select the '2016 Hunting' tab from the left side of the page and select 'Add to Cart' your lifetime hunting license and any other privileges you wish to claim (or purchase). After you have made all your selections, click on 'Check Out' and complete the transaction. There will be a zero dollar balance at the end, but you will need to select the 'Complete Transaction' icon. The transaction is not complete until you do this step. After this you will receive a notice that the transaction is complete and your license will be mailed to you.

BIG GAME DRAWING

Q. Why is the D6 deer zone tag a restricted deer tag for the 2016 hunting season?

A. Regulations state when a deer hunt tag quota fills on or before the first business day after August 1, the deer tag is classified as a restricted deer tag the following year (CCR T14-708.1(a)(2)(A)(1)). In 2015, the D6 deer tag quota filled on August 3, 2015.

Q. I heard that some hunters were drawn for C zone on their second choice, but I was not. What were my chances of being drawn for a C zone tag as my second choice in 2015?

A. 9,013 hunters applied for C zone as their second choice and there were 2,078 C zone tags available for the second choice drawing. Second choice C zone tag applicants had approximately a 23% chance of drawing the C zone tag.

Q. What does a Drawing Receipt look like?

A. Every applicant will receive a Drawing Receipt (**DRA** for deer, **ELA** for elk, **ANA** for antelope and **SHA** for sheep - printed

16 DRA
STATE OF CALIFORNIA
DEPARTMENT OF FISH AND WILDLIFE
1ST DEER DRAW APPLICATION
Receipt

Doc No: D-0016216808-4
STATE ID: S101*** CA
JOE SMITH
6 Y ST
SACRAMENTO, CA 95834
SEX: M HAIR: Grey EYES: Black
HT: 5-10 WT: 312 DOB: 01/01/1980
Resident: I have resided in California continuously for the past 6 months
Doc No: D-0016216808-4 Outlet No: 310003-001
Trans: 000000012271635 3/24/2016 9:57:40 AM
010591206
Customer does not have preference points for any species.
Customer Preference Points

Item	Fee*
1st Deer Drawing Application (Res)	\$29.61

Party Number: 9112254
Party Leader Name: SMITH, JOE
Choices
1st Choice - X1 - ZONE X1
2nd Choice - A - AZONE
Total: \$29.61

*Includes any applicable application fees, agent handling fees, and license buyer surcharge.
If you would like for other hunters to enter the drawing as part of your party, please provide them the 'Party Number' from this receipt for the appropriate species. The party members will need to provide this Party ID at the time of application to join the party.
Detailed drawing information can be found at www.dfg.ca.gov.
For questions regarding your application data or preference points, please contact DFG at (916) 419-7573.

— End of Document D-0016216808-4 —

at the upper right hand corner) for each species submitted. If you were not issued a receipt as pictured, you may not have been entered into the Big Game Drawing and you will not earn a preference point or be drawn for a premium deer tag. **NOTE:** Online sales customers may print their drawing receipt at the end of the sales transaction. Telephone sales customers will receive them in the mail.

Q. How will I know that my tag choices for the drawing were entered correctly?

A. Verify that your tag choices are printed correctly on your Drawing Receipt.

You may also verify your tag choices and view all your license items by accessing your customer profile online at www.ca.wildlifelicense.com/InternetSales. Once you are signed in, you will select the 'View My Drawing Applications/Preference Points' link at the top of the page.

Q. Why did I get drawn for an X3A tag when I only wanted to apply for a preference point for X3A?

A. To apply for a deer preference point, you must tell the license sales clerk that you want to apply for the code **PD** (Point Deer). You do not need to indicate a hunt code along with the preference point code. Preference points are earned for the species and not a particular zone or hunt.

Q. I want to apply for a deer preference point in the Big Game Drawing, but I was issued my first deer tag at the license agent. Will I still earn a preference point?

A. No. If you were issued a first deer tag at the license agent then you were not entered into the Big Game Drawing. You will need to go back to the license agent and tell the sales clerk to cancel the transaction and re-sell you a First Deer Tag Drawing Application with the code **PD** (Point Deer). The license agent only has four hours to cancel any sales transaction. If it has been more than four hours, contact the CDFW's License and Revenue Branch prior to the June 2nd deadline at (916) 419-7573 or e-mail LRB@wildlife.ca.gov.

Q. How can I apply for a deer preference point and get an unrestricted or restricted deer hunt tag?

A. Submit a First Deer Tag Drawing Application with a first choice of **PD** (Point Deer); and a second choice of an unrestricted or restricted deer tag. If your second choice deer tag is available when the Big Game Drawing is conducted, it will be processed in the second round of the drawing. Please see 'How the Drawing Works' on page 22 for more information on the second choice tags.

Q. How can we apply as a party for drawing tags?

A. There are two ways to apply as a party. Members of a party can apply in the same sales transaction or in separate transactions at any CDFW license sales office, license agent, online or by telephone sales. See page 20 for details on the party application process.

Q. I am the party leader, where can I find my Party Number to give to members of my hunting party so they can join me?

A. The Party Number is located on your Drawing Receipt for each species for which you applied. Make sure you give the correct Party Number to the correct party members of each species.

Q. I don't have my party leader's Party Number. Will the license agent be able to join us together?

A. No. You must have the Party Number to join another hunter's party. This is done to ensure that only hunters the party leader allows may join his/her party. CDFW license sales offices and license agents cannot provide you with another hunter's Party Number, only the party leader or members of the party can provide you with their Party Number.

Q. Can a junior hunter apply for a premium deer zone and an Apprentice Hunt on the same application?

A. Yes. Junior hunters who wish to apply for an Apprentice Hunt and a premium deer hunt on the same application must use a First-Deer Tag Drawing Application. Either the Apprentice Hunt or Premium deer hunt will be your first choice (which ever you want the most) and the other as your second choice. You will be issued a preference point if you are unsuccessful in receiving your first choice and your second choice tag will be processed in the second round of the drawing (if the hunt you chose has not filled by the second round of the drawing). If the junior hunter applies for an Apprentice Hunt on the First-Deer Tag Drawing Application, they cannot submit a Second-Deer Tag Drawing Application.

Q. My daughter is a junior hunter. We want to apply together for an X zone tag. Can she apply with me for an X zone tag and still apply for an Apprentice Hunt?

A. Yes. You both can apply as a party for the X zone tag using your First-Deer Tag Drawing Application. Your daughter can apply for the Apprentice Hunts using her Second-Deer Tag Drawing Application.

Q. Will a junior hunter earn two deer preference points if he/she is unsuccessful for both deer tag applications for a premium deer hunt and an Apprentice Hunt tag?

A. No. Hunters may only earn one preference point per species (CCR T14-708.14(c)). Junior hunters submitting two applications in the drawing will earn one preference point if they are unsuccessful in their first choice tag on both applications. If they are successful in their first choice tag on either application their preference points will be reset to zero.

Q. If a junior hunter applies for a premium deer hunt on a First-Deer Tag Drawing Application and an Apprentice Hunt on a Second-Deer Tag Drawing Application, how are the tag choices processed in the drawing? Which application has a higher priority?

A. Neither deer tag application has a priority. The computer assigns each deer tag application a unique random number. The preference point value for each application is calculated the same way, the success or non-success of one application does not affect the other application.

Q. When do I lose preference points?

A. You lose all accumulated preference points for a species, as follows:

- Deer - You lose all accumulated preference points when you are drawn for a premium tag as your first choice.
- Elk, Pronghorn Antelope and Bighorn Sheep - You lose all accumulated preference points for a species if you are drawn for and pay for the tag.
- You also lose all accumulated preference points for any species if you do not participate in the drawing for that species for five (5) consecutive years.

Q. I did not apply in the Big Game Drawing and it is now past the deadline; will I still be able to earn a preference point for this year?

A. No. You will not earn a preference point for this year and you will not lose your previously accrued preference points. However, a hunter's points are reduced to zero when they have not applied for five (5) consecutive years. A missed application deadline is considered as not applying.

If it is after midnight on June 2, 2016, the drawing applications for deer, elk, antelope and Bighorn sheep will not be available in the "Drawings" list to purchase and apply for the drawing

Q. I do not wish to apply for a premium tag this year. How can I earn a preference point for deer, elk, antelope, and bighorn sheep?

A: At a license agent, CDFW license sales office or by telephone sales at (800) 565-1458, you will need to purchase a California hunting license and inform the sales clerk you are applying in the Big Game Drawing. You will need to indicate to the sales clerk, which drawing application(s) you want to apply for; such as: deer, elk, antelope or bighorn sheep. To earn a preference point for deer the code is **PD**, elk is **499**, antelope is **799** and bighorn sheep is **599**.

If applying online, select the "2016 Hunting" tab and "add to the cart" a California hunting license and in the "Drawing" menu, "add to the cart" the drawing applications you want to apply for and enter the corresponding preference point code as indicated above.

To earn the preference point(s), the transaction must be completed before midnight on June 2, 2016.

Q. How can I check my preference point totals in ALDS?

A. Your preference point totals are printed on your Drawing Receipt(s). The receipt will include the applicant's name, hunt choice(s), and accumulated preference points. You can also check your preference points by logging on to your customer profile at www.ca.wildlifelicenses.com/InternetSales and click on the link "View My Draw Application/Preference Points" at the top of the page.



Robert Mihal

Q. How will CDFW track my preference points?

CDFW tracks preference points for current and future drawings using your Get Outdoor (GO) ID. To accurately track your preference points, you must use the same GO ID number to apply in the drawing each year. If you have changes or corrections to your mailing address, you may log into your customer profile and update at www.ca.wildlifelicenses.com/InternetSales. If you have changes or corrections to your name, identification number, such as a driver's license number or date of birth, you must notify CDFW in writing at:

License and Revenue Branch
1740 N. Market Blvd.
Sacramento, CA 95834
or email: LRB@wildlife.ca.gov

FUND-RAISING RANDOM DRAWINGS FOR BIG GAME TAGS

Q. Do I need to purchase a 2016/2017 hunting license to apply?

A. Applicants are not required to possess a valid 2016/2017 California hunting license at the time of entry. However, the successful tag holder must possess a valid 2016/2017 annual California hunting license before the tag is issued.

Q. What is the deadline to apply?

A. The application must be submitted and the sales transaction completed before midnight on June 2, 2016.

Q. Is there a limit on the number of times I can apply?

A. No. You may apply as many times as you want for each tag.

Q. If I am drawn for a Fund-raising Random Drawing tag, will I lose my preference points?

A. No. Preference points are not part of the fund-raising random drawing tag process. Preference points are only earned and applicable towards the general big game tag drawings.

Q. If I am drawn, what are the tag fees for the Fund-raising Random Drawing tags?

A. If you are drawn for a Fund-raising Random Drawing deer, elk, antelope or sheep tag, the tag will be provided at no additional charge.

Q. If I apply in the Big Game Drawing and receive a premium deer zone tag, can I still receive the Fund-raising Random Drawing Open zone deer tag?

A. Yes, you would receive both.

Q. If I apply for the Open Zone Deer Fund-raising Random Drawing and win, but already have two deer tags, can I still get the Fund-raising Random Drawing tag?

A. Yes, however, hunters are restricted each year to no more than two deer tags. In this case you would have to surrender either your First-deer or Second-deer tag prior to issuance of the Open Zone Deer Fund-raising tag.

OBTAINING HUNTING MAPS

Q. Where can I obtain hunting maps for deer zones?

A. General maps detailing individual zone or deer hunt boundaries can be found at the CDFW web site: www.wildlife.ca.gov/Hunting/Deer.

Additional maps are also available from:

- U.S. Forest Service (USFS) or online at www.nationalforestmapstore.com/Default.asp;
- Bureau of Land Management (BLM) at 2800 Cottage Way, Suite W-1834, Sacramento, CA 95825, by phone at 916-978-4400 or online at www.blm.gov/ca/st/en/info/maps.html.
- U.S. Geological Survey (USGS) from sporting goods, backpacking or engineering stores or by contacting the Rocky Mountain Mapping Center, Branch of Information Services, Box 25286, Denver, CO 80225, by phone at 888-ASK-USGS or online at www.usgs.gov/pubprod/.

OTHER

Q. What should I do if I harvest a bear with a GPS collar?

A. If you harvest a bear with a GPS collar, please return the collar to your local CDFW Regional Office. The collar contains important information regarding CDFW's bear aversive condition study in the Lake Tahoe Basin.

For more Frequently Asked Questions on hunting you may visit our web site at www.wildlife.ca.gov/Licensing/Hunting/Big-Game.



**CALIFORNIANS TURN IN
POACHERS & POLLUTERS**
1(888) 334-CALTIP
Confidential Secret Witness Program
24 Hours/7 days a week
California Department of Fish and Wildlife

UNLAWFUL ACTIONS

These are not complete regulations. Some sections are abbreviated. For a complete interpretation, refer to CCR-T14 or visit the Fish and Game Commission website at www.fgc.ca.gov

It is unlawful to do the following:

- Fail to exhibit on the demand of a Wildlife Officer, all licenses, tags, fish, or wildlife taken or otherwise dealt with under the Fish and Game Code, and any device or apparatus designed to be, and capable of being, used to take fish or wildlife. FGC 2012.
- Take game birds, game mammals or furbearing mammals except as permitted by regulations. CCR T14-250.
- Hunt big game without a valid hunting license and tag. FGC 1054.2.
- Hunt with a crossbow during archery season (except with a Disabled Archer Permit). CCR T14-354(g).
- Possess a firearm while hunting during archery season or while hunting during the general season with an archery-only tag. CCR T14-354(h).
- Take spike buck. CCR T14-351(c).
- Pursue, drive, herd, or take any bird or mammal from any type of motor-driven air or land vehicles, motorboat, airboat, sailboat, or snowmobile, except when the motor is off and/or the sails furled and it is drifting, beached, moored, resting at anchor, or is being propelled by paddle, oar or pole. CCR T14-251.
- Knowingly feed big game mammals. CCR T14-251.3.
- Take game birds and mammals within 400 yards of any baited area. This does not apply to the taking of game birds and mammals on or over standing crops, croplands, or grains found scattered solely as the result of normal agricultural operations or procedures. CCR T14-257.5.
- Take bears within 400 yards of any garbage dump or bait. CCR T14-365(e).
- Take more than two deer per license year. CCR T14-708.1.(a)(1).
- Intentionally discharge a firearm or release an arrow or crossbow bolt from a bow or crossbow upon or across any highway, road or other way open to vehicular traffic. CCR T14-354(e), FGC 3004(b).
- Nock or fit the notch in the end of an arrow to a bowstring or crossbow string in a ready-to-fire position while in or on any vehicle. CCR T14-354(i).
- Hunt with bow or crossbow that will not cast a legal hunting arrow, except flu-flu arrows, a horizontal distance of 130 yards. CCR T14-354(f).
- Hunt big game from one-half hour after sunset to one-half hour before sunrise. CCR T14-352.
- Use dogs for pursuit/take, or for dog training, during the archery seasons for deer or bear. CCR T14-265(a)(1).
- Use dogs to take, bear, bobcat, elk, bighorn sheep and antelope CCR T14 265 (a)(2).
- Use dogs for pursuit/take of, or for dog training on, mountain lions (except under authority of a depredation permit). CCR T14-265(a)(3).
- Use an artificial light to assist in taking any game bird or game mammal. FGC 2005(a).
- To deposit, permit to pass into, or place where it can pass into the waters of the state, or to abandon, dispose of, or throw away, within 150 feet of the high water mark of the waters of the state, any cans, bottles, garbage, rubbish, or the viscera or carcass of any dead mammal, or the carcass of any dead bird. FGC 5652.
- Fail to send a complete written report to the Department within 48 hours after killing or wounding while hunting, any human being, or domestic animal belonging to another, or after witnessing such killing or wounding. FGC 12151.5.
- Use of a shotgun larger than 10 gauge for the taking of any game bird or game mammal, or a shotgun capable of holding more than three shells in the magazine and chamber combined. FGC 2010; CCR T14-311 and 353(b).
- Possess a short barreled shotgun (Barrel less than 18 inches), or a short-barreled rifle (Barrel less than 16 inches) PC 33215.
- Possess in any State Game Refuge any bird or mammal or part thereof, or any weapon capable of taking any bird or mammal. FGC 10500. However, possession of firearms or bows and arrows by persons traveling through game refuges on a public highway or other public thoroughfare or right of way is permitted when the firearms are taken apart or encased and unloaded, and the bows are unstrung. FGC 10506. (National Parks and Monuments have special regulations regarding the possession of weapons, game and the running of hunting dogs. Check with federal officials before entering these areas.)
- Hunt any game bird or mammal without having the required licenses, tags and/or stamps in possession; FGC 1054.2.
- Transfer, use, possess or alter any license, tag, stamp, permit, application or reservation. FGC 1052.
- Damage another's property or injure livestock while hunting. FGC 2004.
- Sell or barter game taken under the authority of a hunting license. FGC 3039.
- Possess a loaded rifle or shotgun in any vehicle or conveyance or its attachments which is standing on or along or is being driven on or along any public highway or other way open to the public.
- A rifle or shotgun shall be deemed to be loaded for the purposes of this section when there is an unexpended cartridge or shell in the firing chamber but not when the only cartridges or shells are in the magazine. FGC 2006
- The provisions of this section shall not apply to peace officers or members of the armed forces of this state or the United States, while on duty or going to or returning from duty. FGC 2006.