

Dubai Star Oil Spill NRDA – Summer 2016 Update



Background

On October 30, 2009, a re-fueling accident resulted in the discharge of over 400 gallons of Intermediate Fuel Oil (IFO) from the oil tanker Dubai Star. State and federal natural resource trustee agencies assessed the injuries to wildlife, habitat, and recreational uses with \$850,000 allocated for natural resource restoration. The trustee agencies and the East Bay Regional Park District identified five restoration projects described below to address natural resources injured by the spill.

Sand Replenishment at Crown Beach

Restoration funds from the Dubai Star oil spill settlement helped fund the [East Bay Regional Park District's sand replenishment project](#) at the Crown Beach Regional Shoreline. This project provided additional shoreline recreation and erosion protection for the adjacent Alameda community. Construction was completed in December 2013.

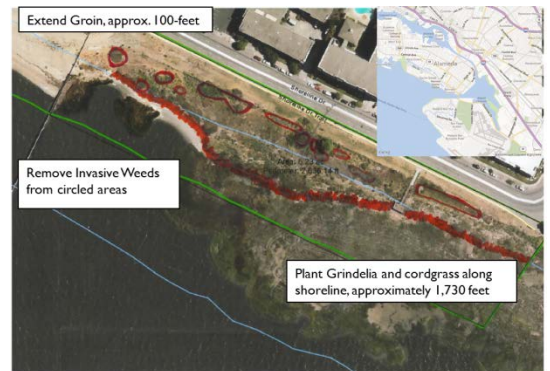


Fishing Outreach Program

Since 2013, the East Bay Regional Park District has offered [fishing programs](#) for the public in partnership with the City of Alameda Recreation and Park Department, Girls Inc. of Alameda County, and several local elementary schools. As of May 2016, 765 participants have been involved in events at several locations along the Alameda shoreline. A mobile fishing trailer will be ready for use this fall to facilitate fishing programs for larger groups at more locations. This fishing outreach program will continue with additional events through 2016.

Extension of the Park St. Groin Wall

East Bay Regional Park District will extend the existing Park Street Groin approximately 100 feet further shoreward to the toe of beach dunes along Shoreline Drive. The construction will limit further migration of sand from Crown Beach into Elsie Roemer Marsh. Construction of the groin wall is anticipated to begin in fall 2016.



Elsie Roemer Marsh Restoration

East Bay Regional Park District will remove 0.75 acres of invasive weeds, and plant grindelia and cordgrass within 6.23 acres of the Elsie Roemer Marsh. Community-based marsh enhancement activities are ongoing and work is likely to be complete by next spring.

Rocky Intertidal Restoration along Alameda Shoreline

The Trustees are working with [University of California, Santa Cruz rocky intertidal scientists](#) to restore rocky intertidal habitat along the Alameda County shoreline. Staff will transplant rockweed, an ecological foundation species, into areas with low abundance to enhance existing rocky intertidal habitat. Rockweed restoration being conducted across San Francisco Bay with funding from the [Cosco Busan Trustee Council](#) will inform planning efforts for this Alameda-specific project.



Dubai Star NRDA Restoration Budget

	Restoration Project	Funds	Status
Recreational Use	Sand Replenishment at Crown Beach	\$300,000	Complete
	Fishing Outreach Program	\$50,000	Ongoing
Bird and Marsh Habitat	Park Street Groin Extension	\$317,500 ¹	Final Design
	Wetland Restoration at Elsie Roemer Marsh	\$38,500 ²	Ongoing
Rocky Intertidal Habitat	Rockweed Restoration along Alameda County Shoreline	\$44,000	Planning
Restoration Sub-total		\$750,000	
Administration & Trustee Oversight		\$100,000	
Total Funds Received		\$850,000	

¹ An additional \$300,000 will be provided by East Bay Regional Parks District.

² An additional \$36,500 in matching funds will be provided by [CDFW-OSPR's small spill NRDA restoration fund](#).



Contact Information

Michael Anderson

Office of Spill Prevention and Response
 California Department of Fish and Wildlife
 (916) 324-9784

michael.anderson@wildlife.ca.gov

www.wildlife.ca.gov/OSPR/NRDA/Dubai-Star-San-Francisco-Bay

