



State of California – Natural Resources Agency
DEPARTMENT OF FISH AND WILDLIFE
1701 Nimbus Road, Suite A
(916) 358-2900
Rancho Cordova, CA 95667
www.wildlife.ca.gov

EDMUND G. BROWN JR., Governor
CHARLTON H. BONHAM, Director



State of California
Department of Fish and Wildlife

M e m o r a n d u m

Date: July 8, 2016

To: Kevin Thomas
Environmental Program Manager (Region 2 Fisheries)
California Department of Fish and Wildlife

From: Ben Ewing
District Fisheries Biologist
Alpine, Amador, Calaveras, and Lake Counties
California Department of Fish and Wildlife

Cc: Fish Files

Re: 2016 East Panther Creek Backpack Electrofishing Survey

On July 7, 2016, two California Department of Fish and Wildlife (Department) employees and one Foothill Conservancy employee conducted a backpack electrofishing survey on East Panther Creek (Amador County). The purpose of the survey was to gather information on the fishery due to planned work in the riparian area which involves the removal of a previously breached diversion dam (Figure 1). Information collected would be used to help determine whether the project would impact the fishery in East Panther Creek in the vicinity of the work site. A single electrofishing pass was made on an approximately 570 foot stretch of water beginning at 38.48862 N, 120.38745 W at 10:10 and ending at 38.48916 N 120.38574 W at 12:00. The location of the survey was at 3,662 feet above mean sea level (Figure 2).



Figure 1. East Panther Creek Diversion Dam (B. Ewing, 8/29/2012).

The shoreline of East Panther Creek, in the survey area, was a mix of deciduous trees, rocks, and montane hardwood-conifers. The creek bottom appears mostly rock (Figure 3). The estimated depth of the creek where the survey was conducted ranged from approximately six inches to two and a half feet. The creek receives water from snow and rain runoff from the local area where it then flows into the North Fork of the Mokelumne River.

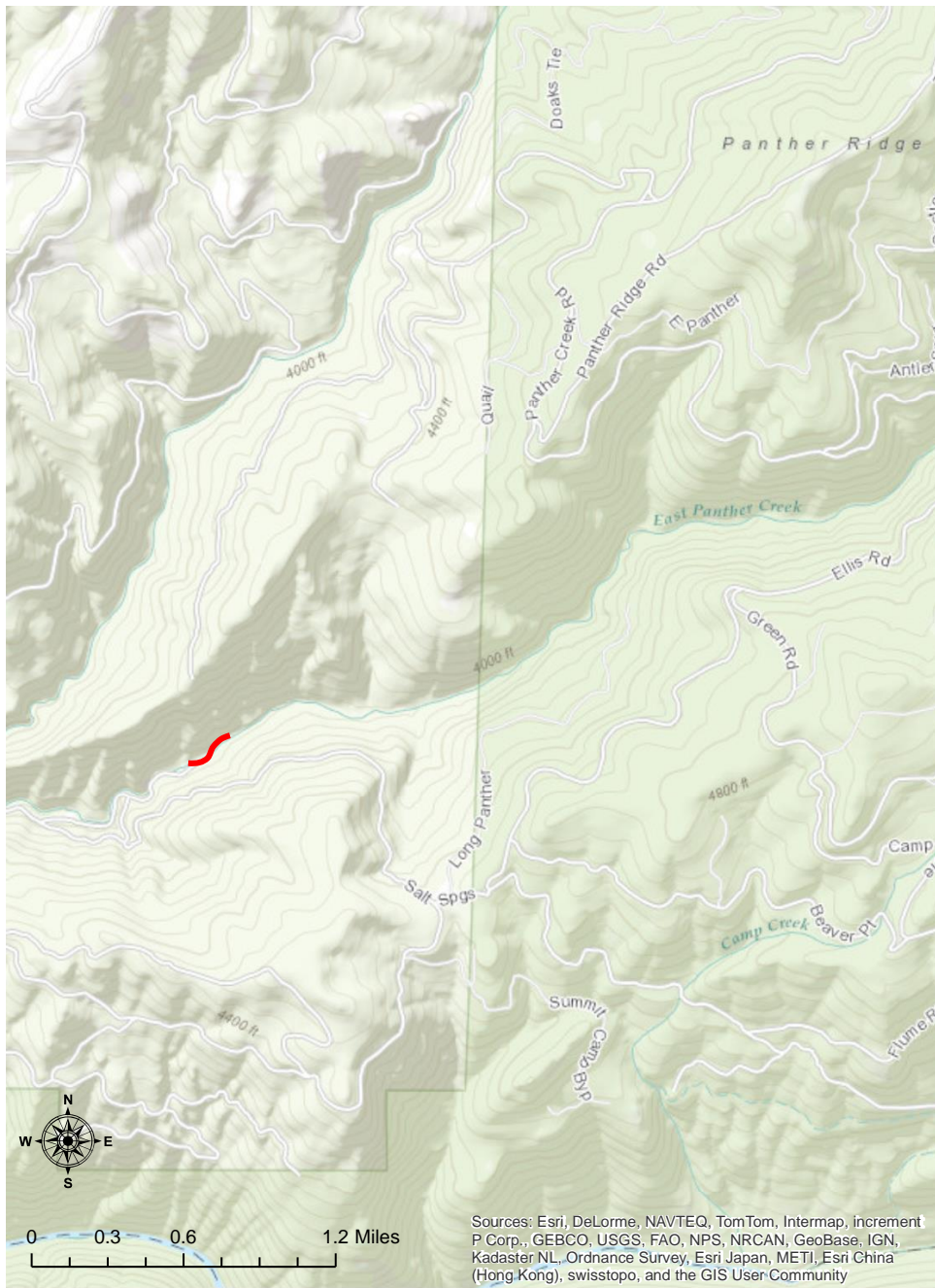


Figure 2. East Panther Creek Electrofishing Transect (Amador County).



Figure 3. East Panther Creek (R. Childress, 7/7/2016).

The survey yielded a combined 33 fish with two species collected. Rainbow trout (*Oncorhynchus mykiss*) (RT) made up 87.9% of the total catch and was the greatest number of a given species collected. Brown trout (*Salmo trutta*) (BN) made up the remaining percentage of the catch.

Total lengths ranged from 37 mm – 204 mm (1.5 in. – 8.0 in.) for RT and 158 mm – 171 mm (6.2 in. – 6.7 in.) for BN. Average total length for RT was 102.8 mm (4.0 in.) while BN was 165 mm (6.5 in.).

A post-project survey will be done by the Department in order to perform a comparison between pre and post project information.