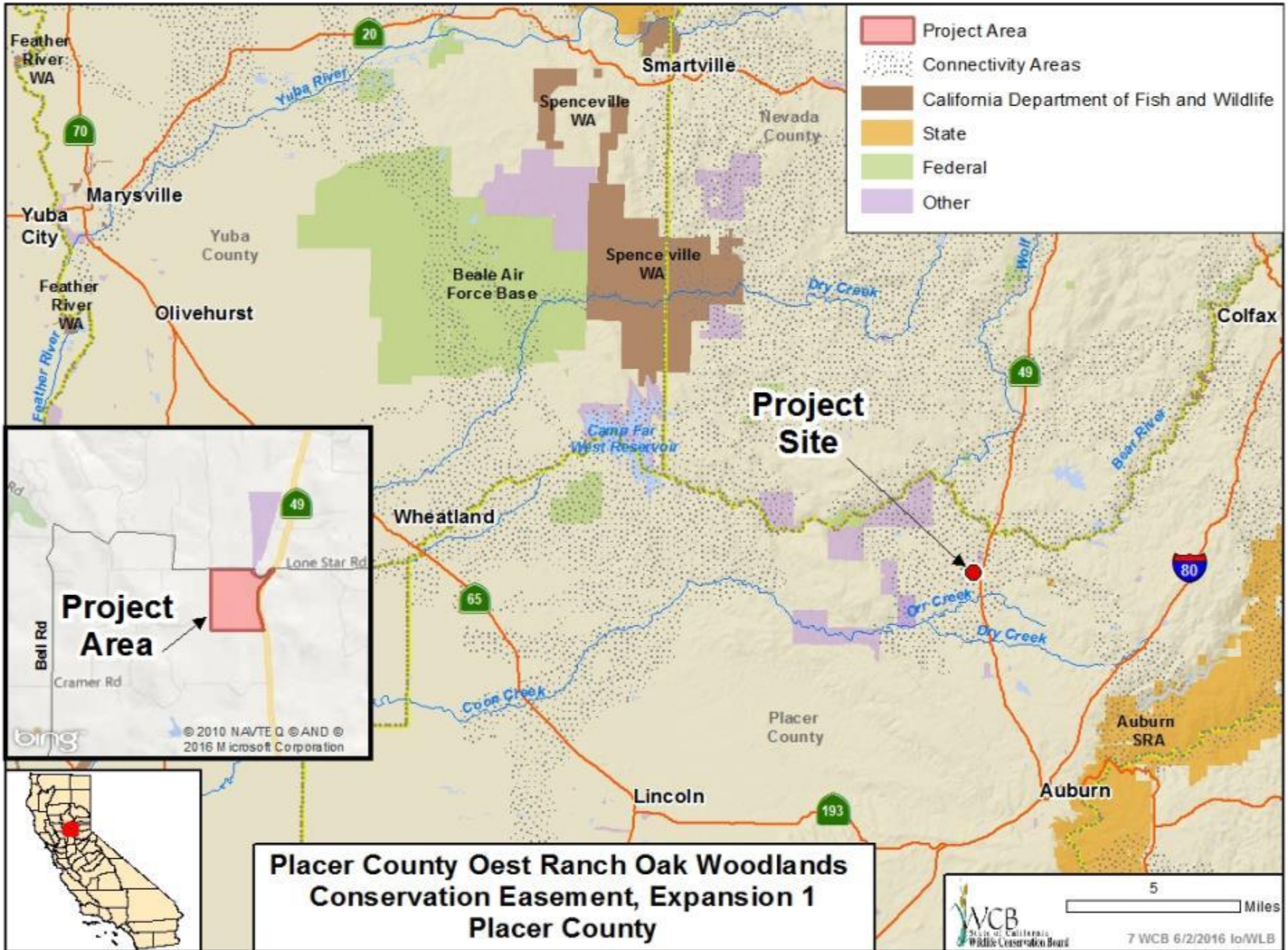




June 2, 2016, 10:00am
Wildlife Conservation Board Meeting
California State Capitol, Room 437
Sacramento, California 95814



- Project Area
- Connectivity Areas
- California Department of Fish and Wildlife
- State
- Federal
- Other



**Placer County Oest Ranch Oak Woodlands
Conservation Easement, Expansion 1
Placer County**

#7. Placer County Oest Oak Woodlands Conservation Easement, Exp. 1



The property is used as a working landscape for the family-owned livestock farming operation

#7. Placer County Oest Oak Woodlands Conservation Easement, Exp. 1



The Conservation Easement area consists of lower elevation foothill terrain with a ridgetop area that extends along most of the western portion of the site

#7. Placer County Oest Oak Woodlands Conservation Easement, Exp. 1

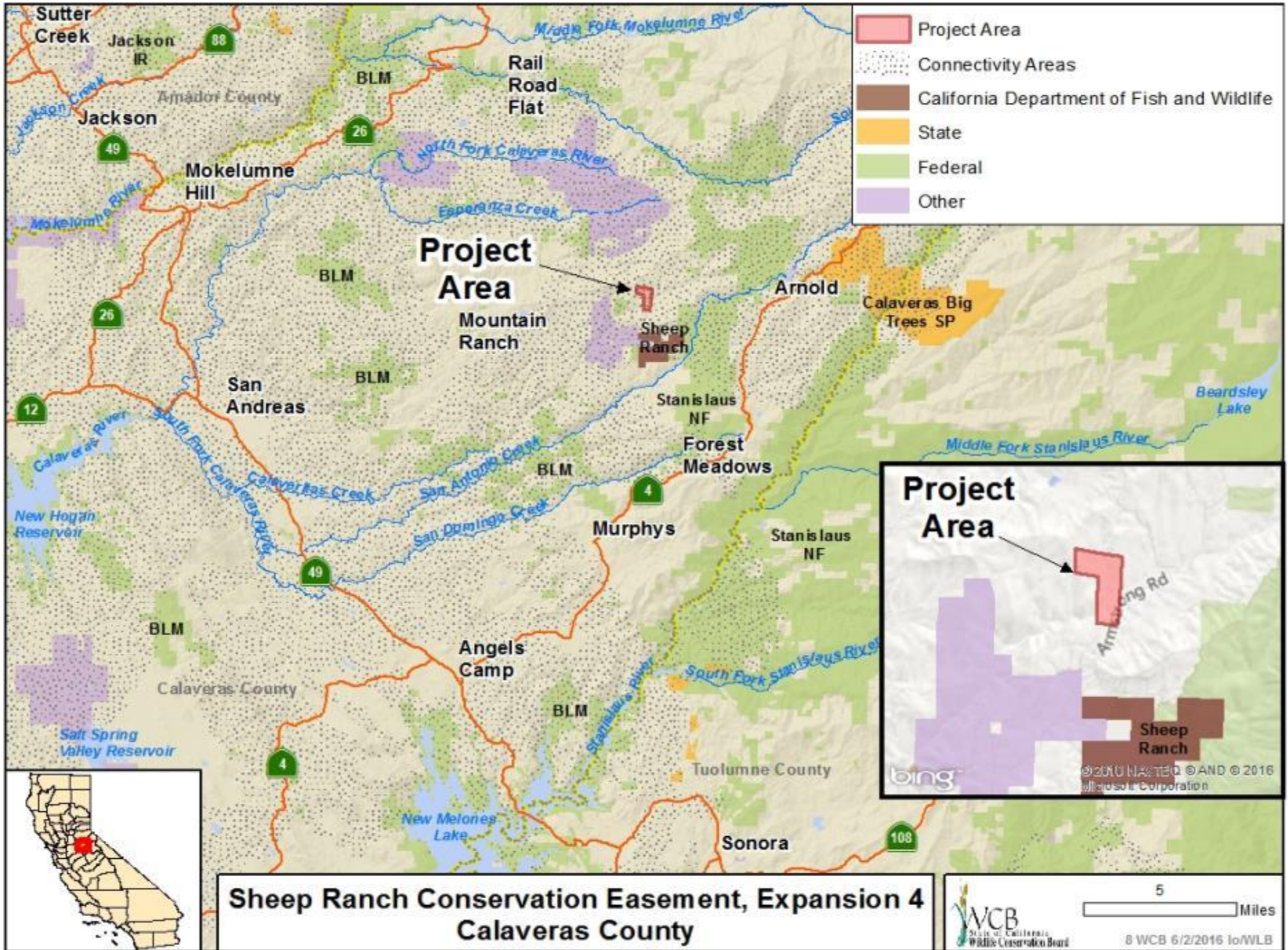


The Conservation Easement will require the landowner to implement stewardship practices that recognize and incorporate the ecological requirements of oak woodlands and associated habitats

#7. Placer County Oest Oak Woodlands Conservation Easement, Exp. 1



Blue oaks are the most abundant tree species on Oest Ranch



#8. Sheep Ranch Conservation Easement, Exp. 4



Top of waterfall

#8. Sheep Ranch Conservation Easement, Exp. 4



Miwok archeological site at top of waterfall

#8. Sheep Ranch Conservation Easement, Exp. 4



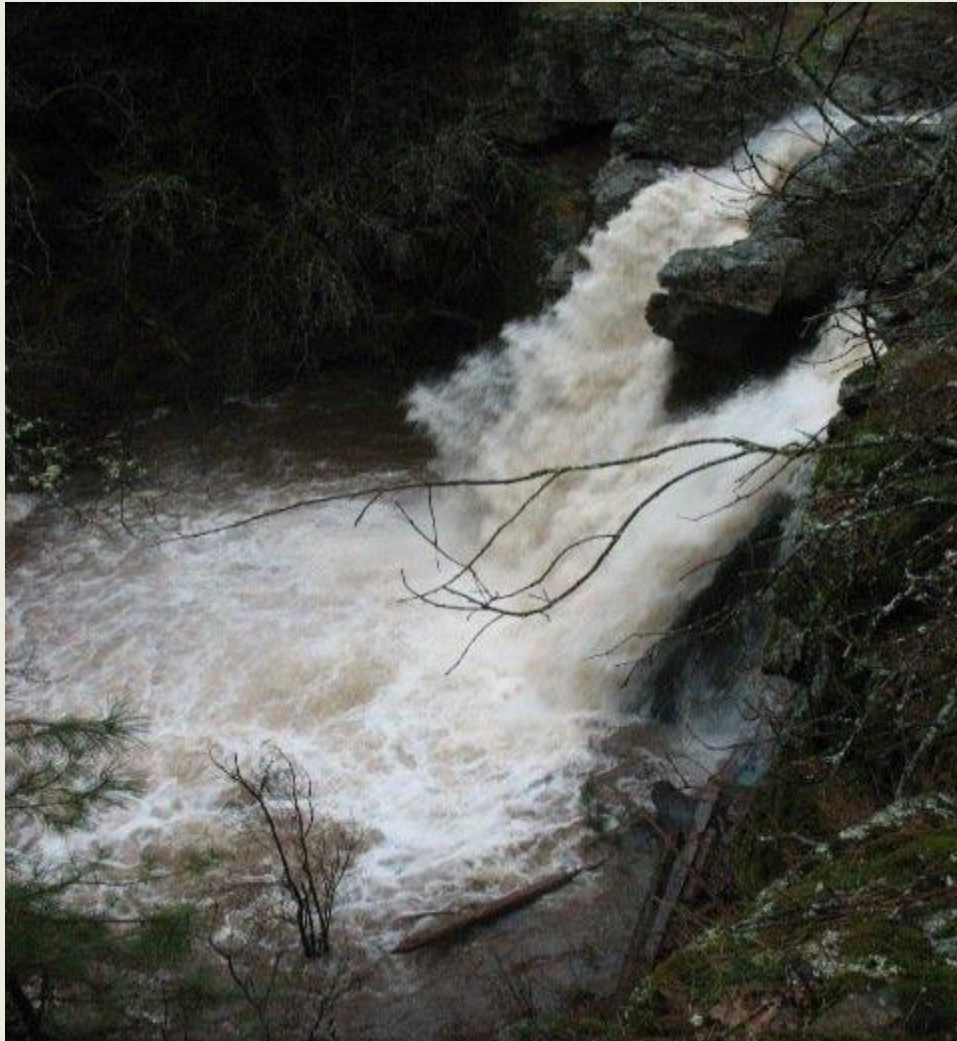
Mixed hardwood conifer habitat on the property

#8. Sheep Ranch Conservation Easement, Exp. 4



Mixed hardwood conifer habitat on the property

#8. Sheep Ranch Conservation Easement, Exp. 4

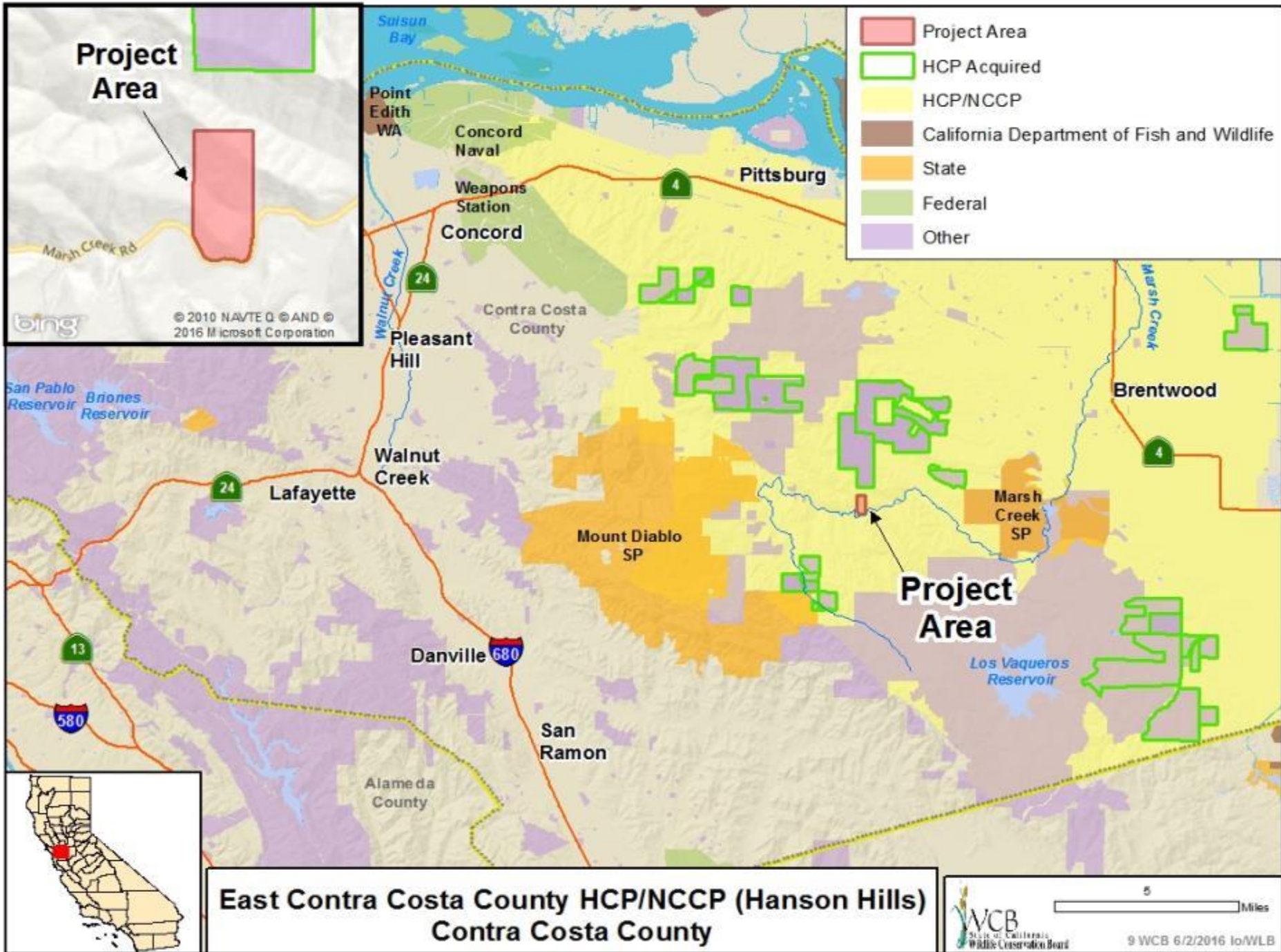


Waterfall in the winter

#8. Sheep Ranch Conservation Easement, Exp. 4



Waterfall and mixed habitat
on property



**East Contra Costa County HCP/NCCP (Hanson Hills)
Contra Costa County**

#9. East Contra Costa HCP/NCCCP (Hanson Hills)



Aerial view of the Hanson Hills property

#9. East Contra Costa HCP/NCCP (Hanson Hills)



Looking west across the property toward Mount Diablo

#9. East Contra Costa HCP/NCCP (Hanson Hills)



Long Canyon Creek

#9. East Contra Costa HCP/NCCCP (Hanson Hills)



Looking west toward Mount Diablo

#9. East Contra Costa HCP/NCCCP (Hanson Hills)



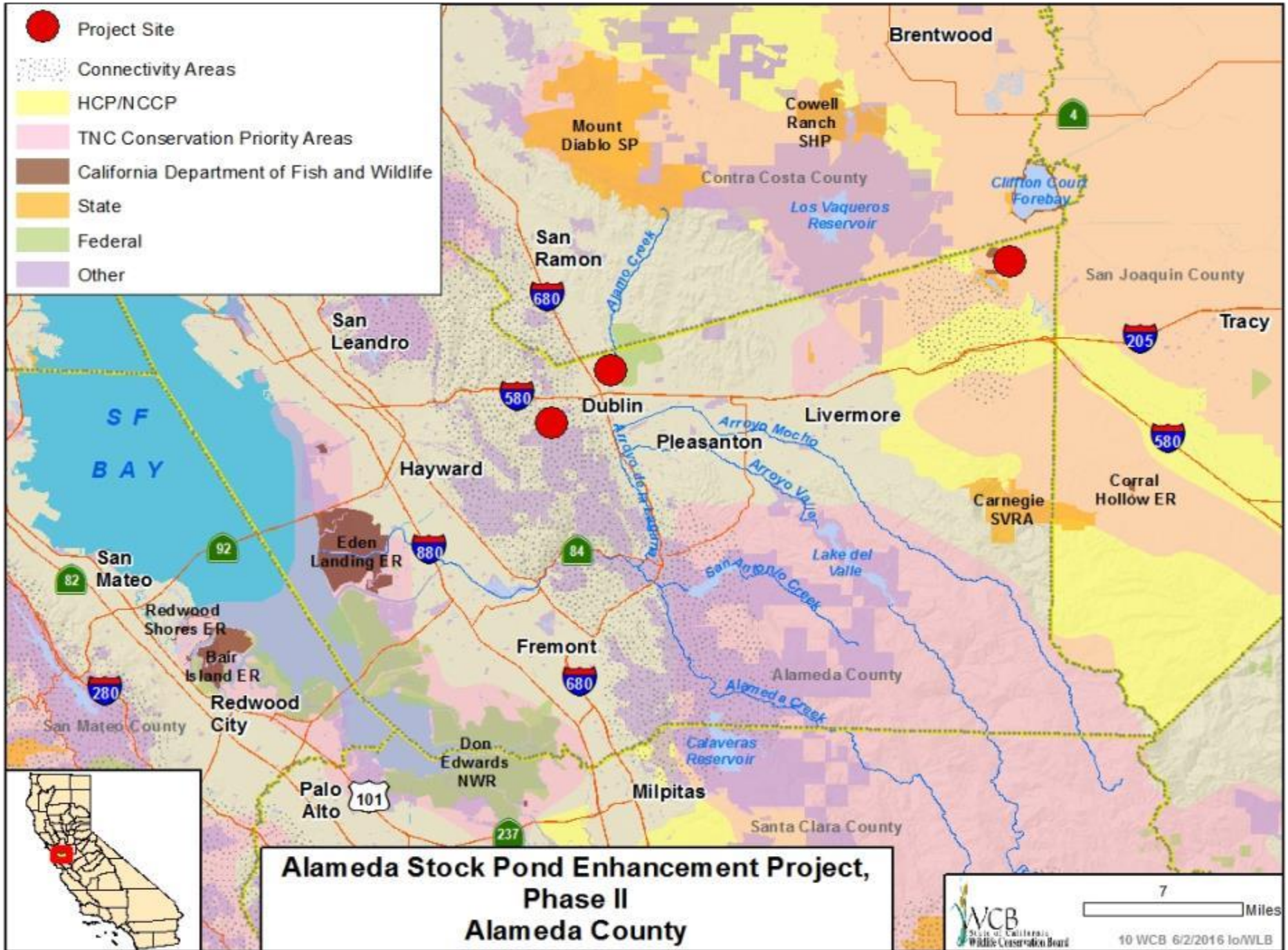
Oak trees on the property, facing toward Mount Diablo

#9. East Contra Costa HCP/NCCCP (Hanson Hills)



View looking southeast

-  Project Site
-  Connectivity Areas
-  HCP/NCCP
-  TNC Conservation Priority Areas
-  California Department of Fish and Wildlife
-  State
-  Federal
-  Other



**Alameda Stock Pond Enhancement Project,
Phase II
Alameda County**

#10. Alameda County Stock Pond Enhancement, Phase II



Stock pond prior to restoration. Pond enhancement included vegetation control, fill dirt and bank erosion control.

#10. Alameda County Stock Pond Enhancement, Phase II



Stock pond after restoration

#10. Alameda County Stock Pond Enhancement, Phase II



Proposed pond 1 restoration site. Restoration elements include vegetation control, grading of banks and erosion control

#10. Alameda County Stock Pond Enhancement, Phase II



Proposed pond 2 restoration site. Restoration elements include vegetation control, grading of banks and erosion control

#10. Alameda County Stock Pond Enhancement, Phase II



Pond restoration benefits multiple listed species including the California Tiger Salamander and California Red Legged Frog



- Project Site
- TNC Conservation Priority Areas
- California Department of Fish and Wildlife
- State
- Federal
- Other

Project Site

**Santa Cruz Integrated Watershed Restoration
Watsonville Slough
Santa Cruz County**



5 Miles

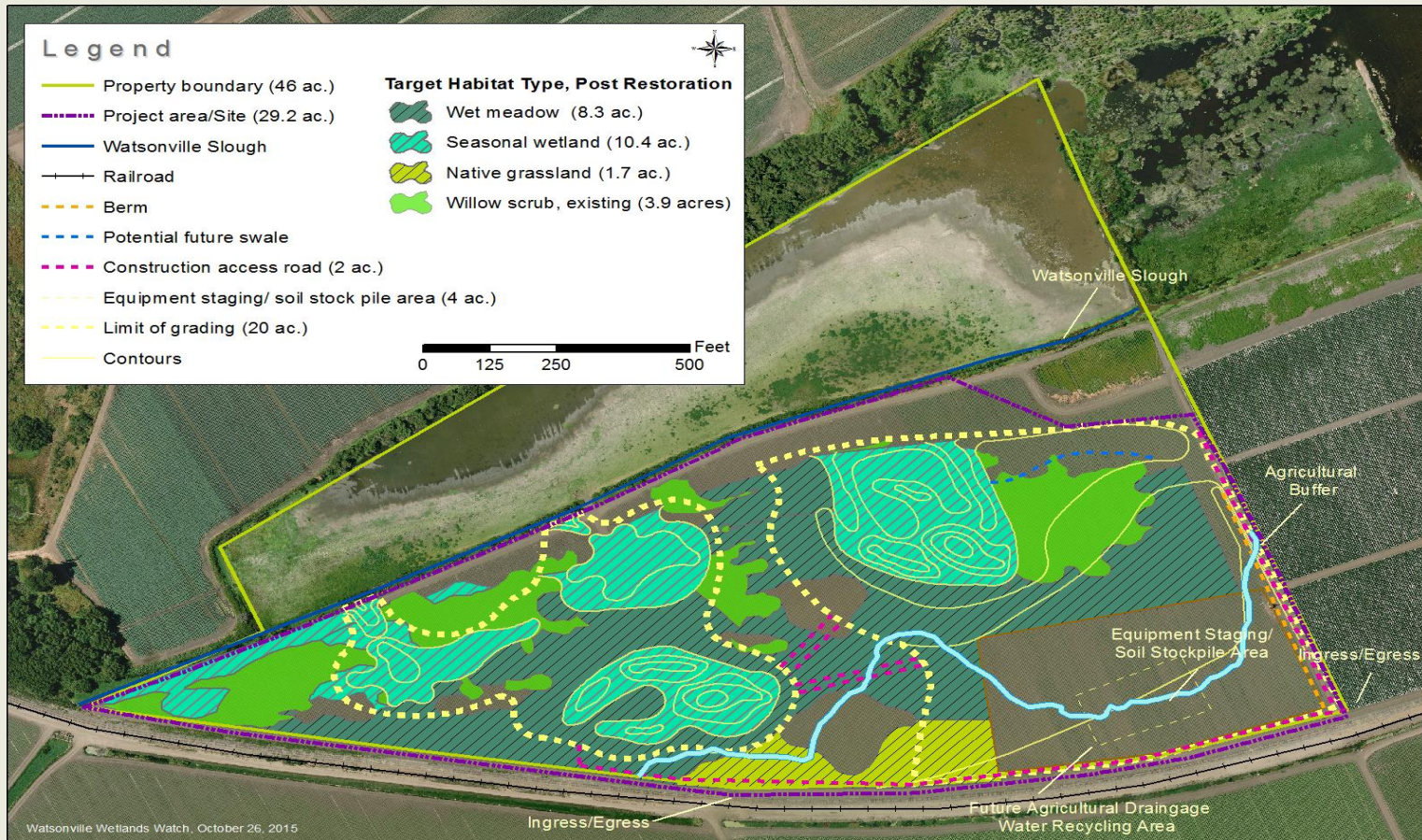
11 WCB 6/2/2016 Io/WLB

#11. Santa Cruz Integrated Watershed Restoration, Watsonville Slough



Aerial view of the project area

#11. Santa Cruz Integrated Watershed Restoration, Watsonville Slough



Restoration and Enhancement Features

#11. Santa Cruz Integrated Watershed Restoration, Watsonville Slough



Current conditions looking northeast from railroad tracks

#11. Santa Cruz Integrated Watershed Restoration, Watsonville Slough



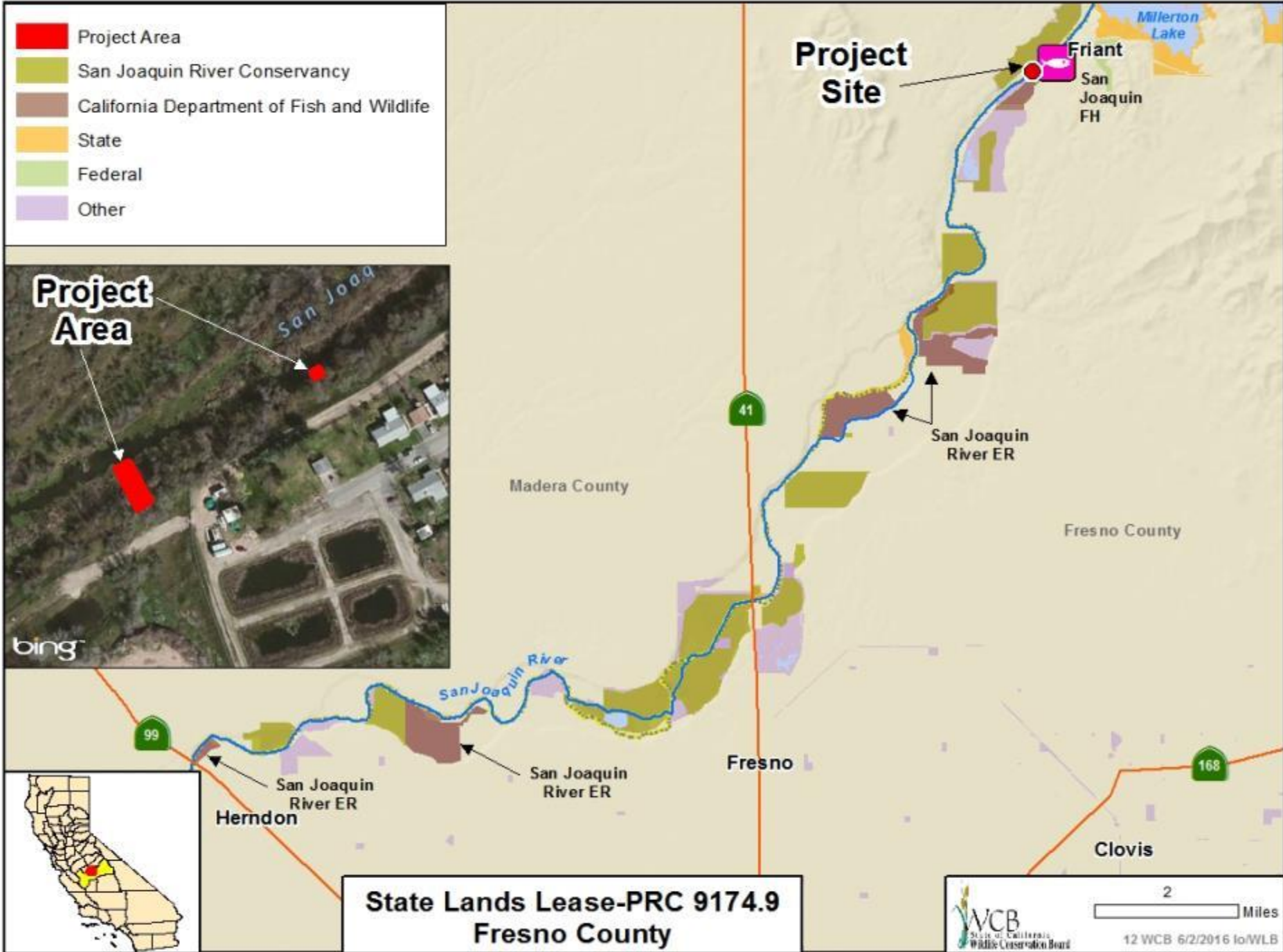
Looking east across the project area

#11. Santa Cruz Integrated Watershed Restoration, Watsonville Slough



Example of habitat conditions proposed for Bryant Habert project area

- Project Area
- San Joaquin River Conservancy
- California Department of Fish and Wildlife
- State
- Federal
- Other



**State Lands Lease-PRC 9174.9
Fresno County**



2 Miles

12 WCB 6/2/2016 lo/WLB

#12. State Lands Lease – PRC 9174.9



View of Friant Dam from effluent treatment ponds

#12. State Lands Lease – PRC 9174.9



Existing storm drain outfall in secondary channel of the San Joaquin River

#12. State Lands Lease – PRC 9174.9

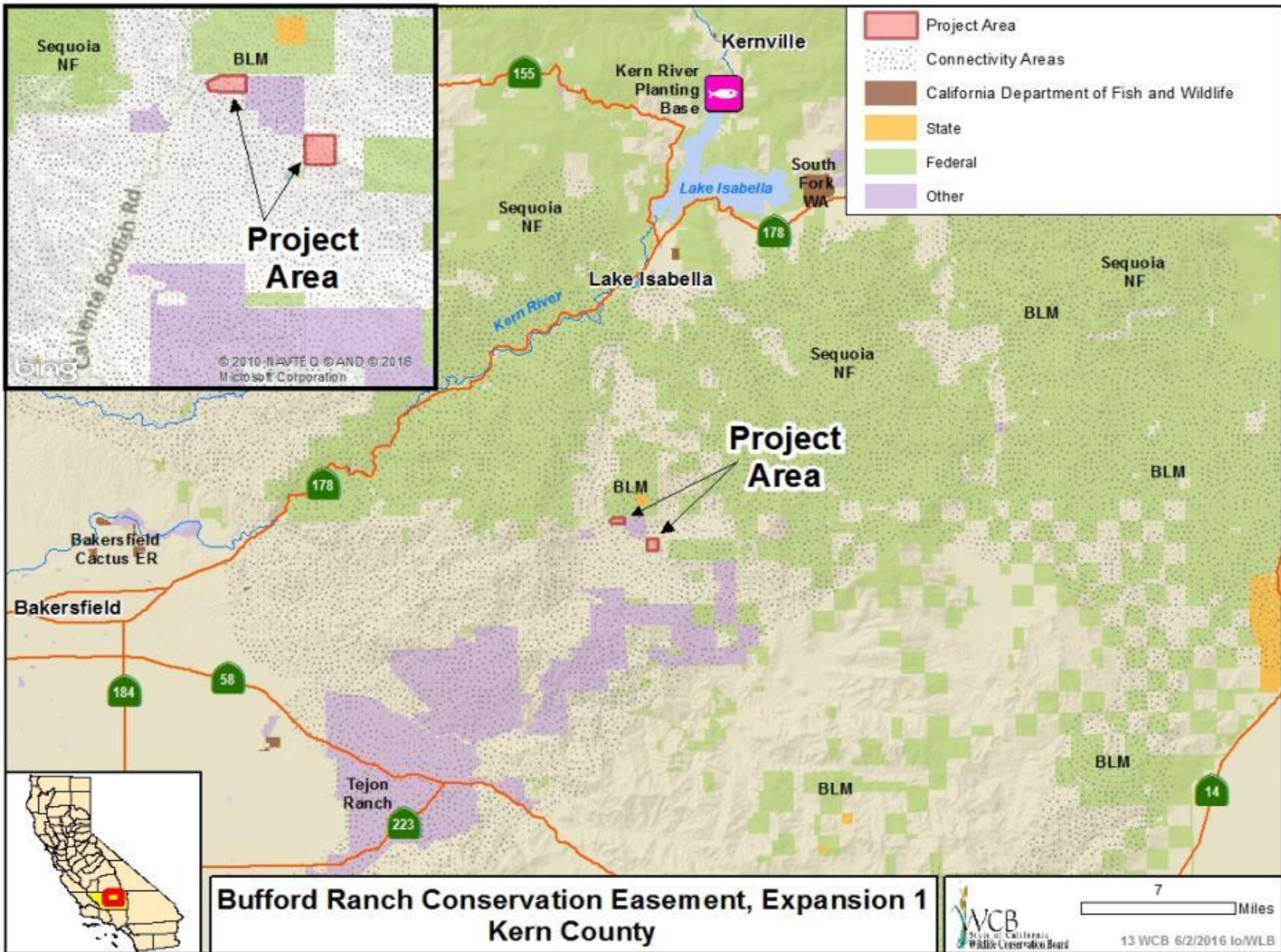


Secondary Channel of San Joaquin River near the proposed volitional release pipe

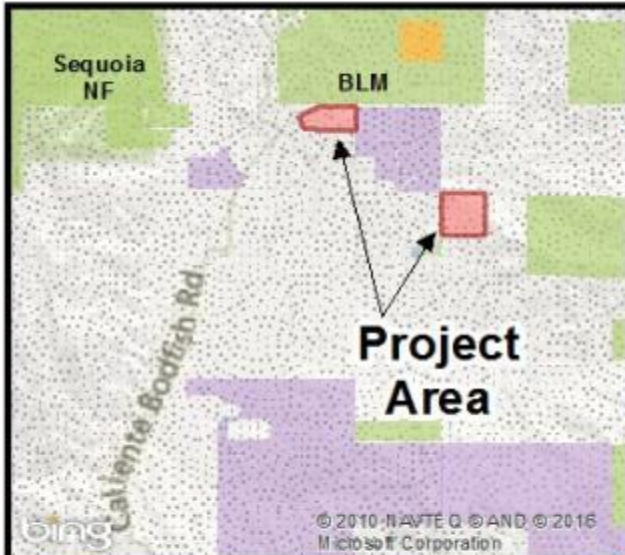
#12. State Lands Lease – PRC 9174.9



Secondary channel of San Joaquin River near the storm drain outfall



- Project Area
- Connectivity Areas
- California Department of Fish and Wildlife
- State
- Federal
- Other



**Bufford Ranch Conservation Easement, Expansion 1
Kern County**

#13. Bufford Ranch Conservation Easement, Exp. 1



Habitat corridor to be preserved

#13. Bufford Ranch Conservation Easement, Exp. 1

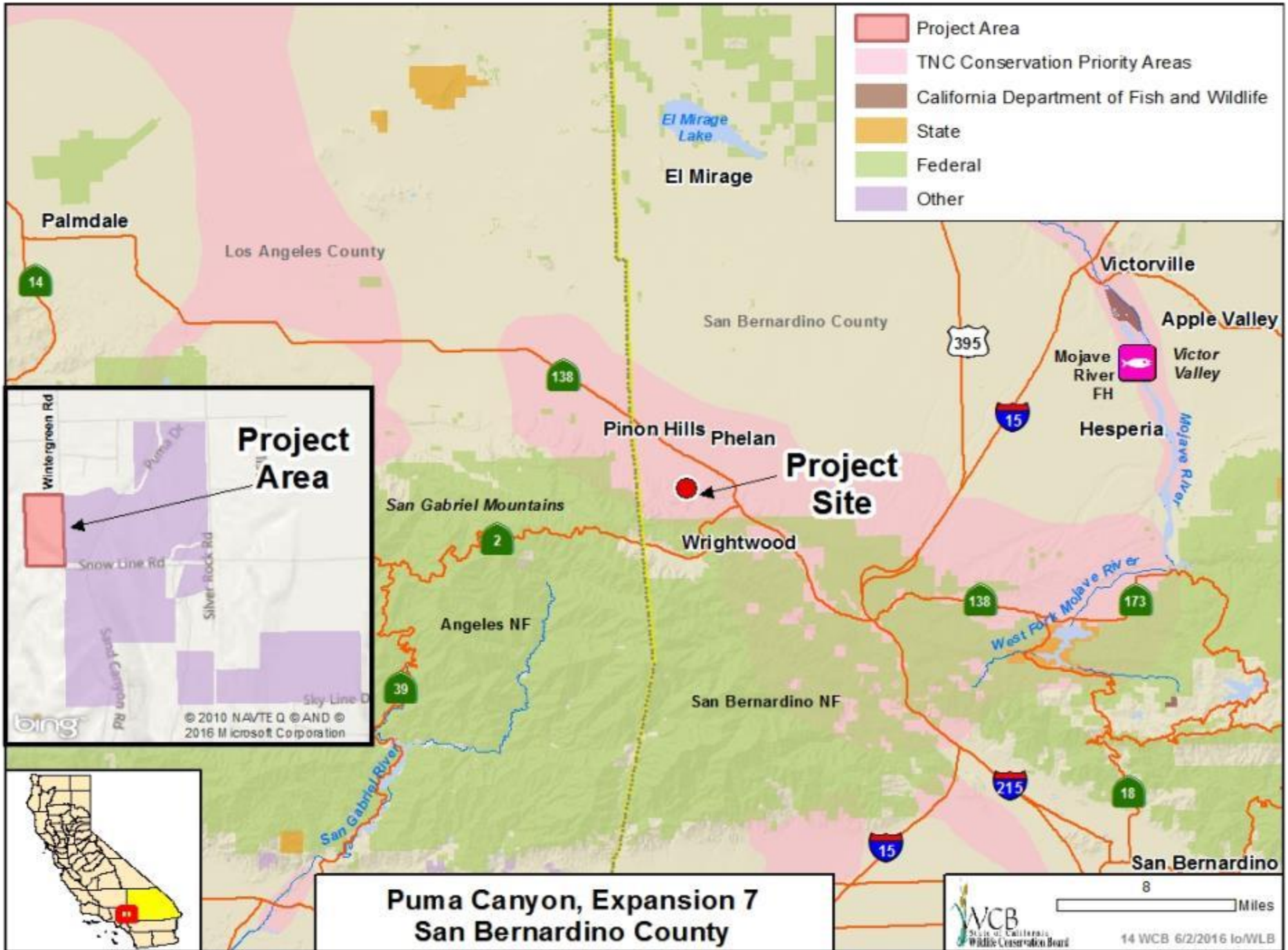


Open grazing land on property

#13. Bufford Ranch Conservation Easement, Exp. 1



Seasonal stream found on property



- Project Area
- TNC Conservation Priority Areas
- California Department of Fish and Wildlife
- State
- Federal
- Other

Project Area

Wintergreen Rd
Puma Ck
Snow Line Rd
Silver Rock Rd
Sand Canyon Rd
Sky-Line D

bing

© 2010 NAVTEQ © AND ©
2016 Microsoft Corporation

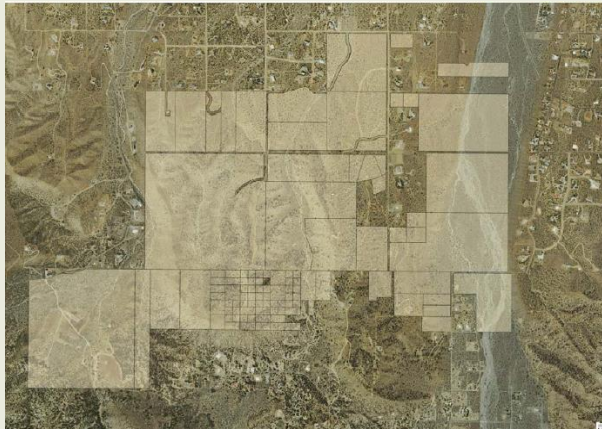
**Puma Canyon, Expansion 7
San Bernardino County**

8 Miles

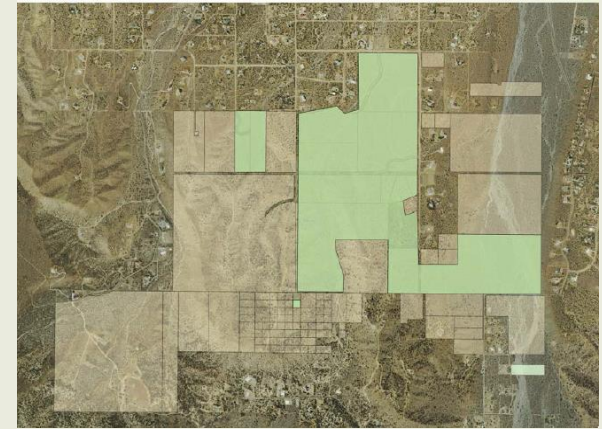
WCB
State of California
Wildlife Conservation Board

14 WCB 6/2/2016 lo/WLB

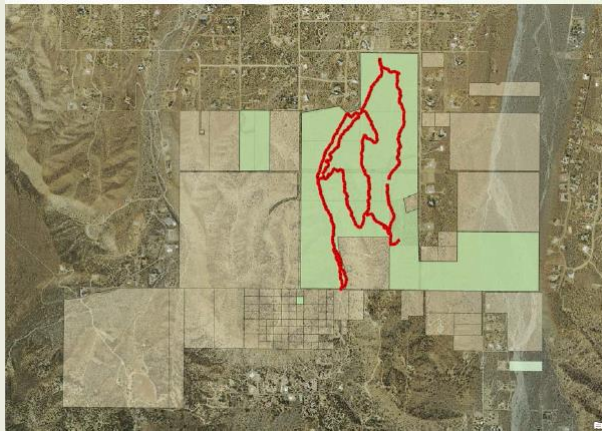
#14. Puma Canyon, Exp. 7



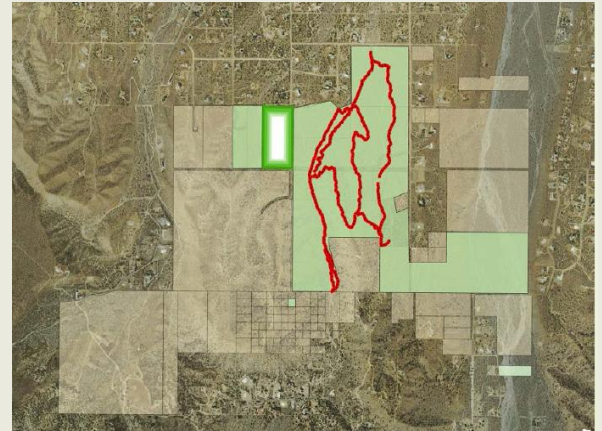
Left-Puma - CAPP



Right – Properties now owned by THC



Left – Properties showing THC constructed trails



Right – The missing piece

#14. Puma Canyon, Exp. 7



The subject property is improved with a single family dwelling that will be used in the future as an Educational Center. Photos show the great views from the house of the surrounding property.



#14. Puma Canyon, Exp. 7



Views of some of the diverse plants on the subject property



#14. Puma Canyon, Exp. 7

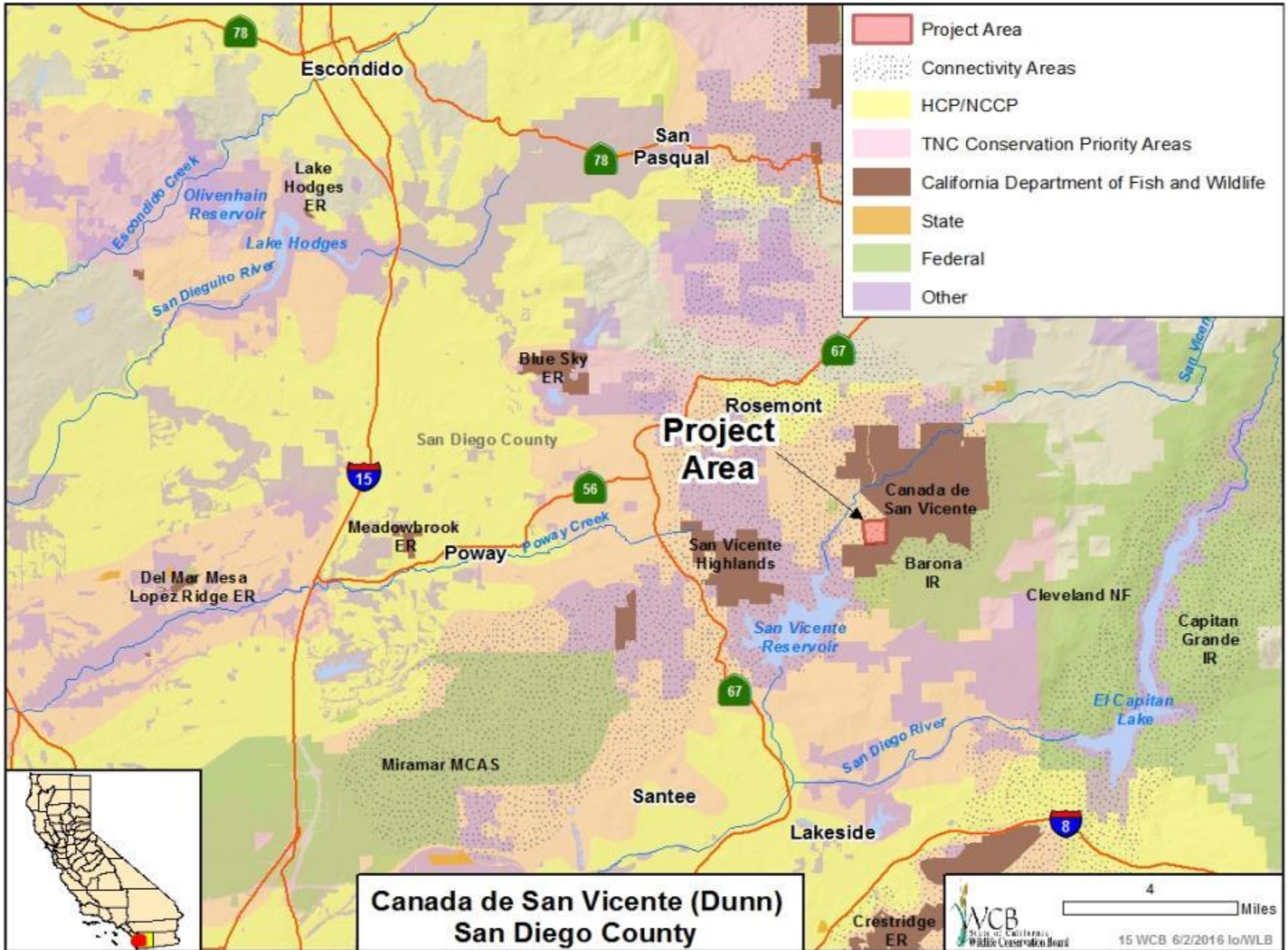


View of the landscape on the subject property

#14. Puma Canyon, Exp. 7



Photo taken on the
subject property



- Project Area
- Connectivity Areas
- HCP/NCCP
- TNC Conservation Priority Areas
- California Department of Fish and Wildlife
- State
- Federal
- Other

**Canada de San Vicente (Dunn)
San Diego County**



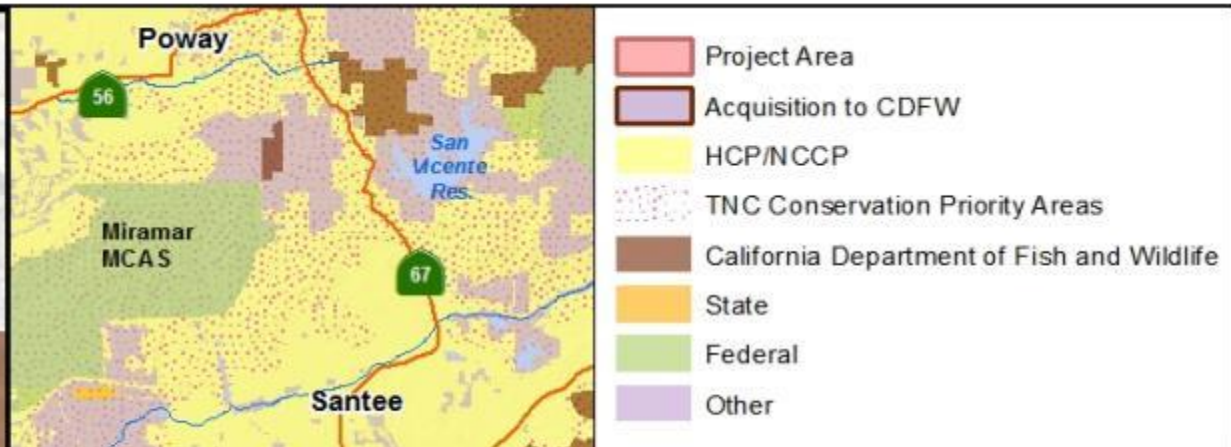
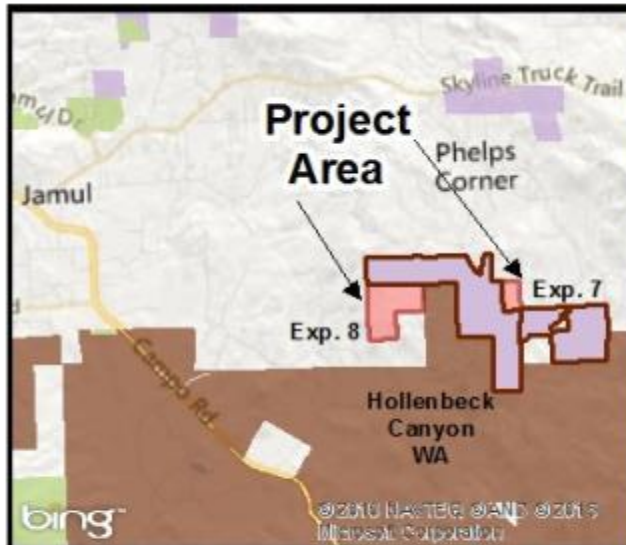
15 WCB 6/2/2016 lo/WLB

4 Miles

#15. Canada de San Vicente Ecological Reserve, Exp. 1



This Project was withdrawn from
consideration at this time



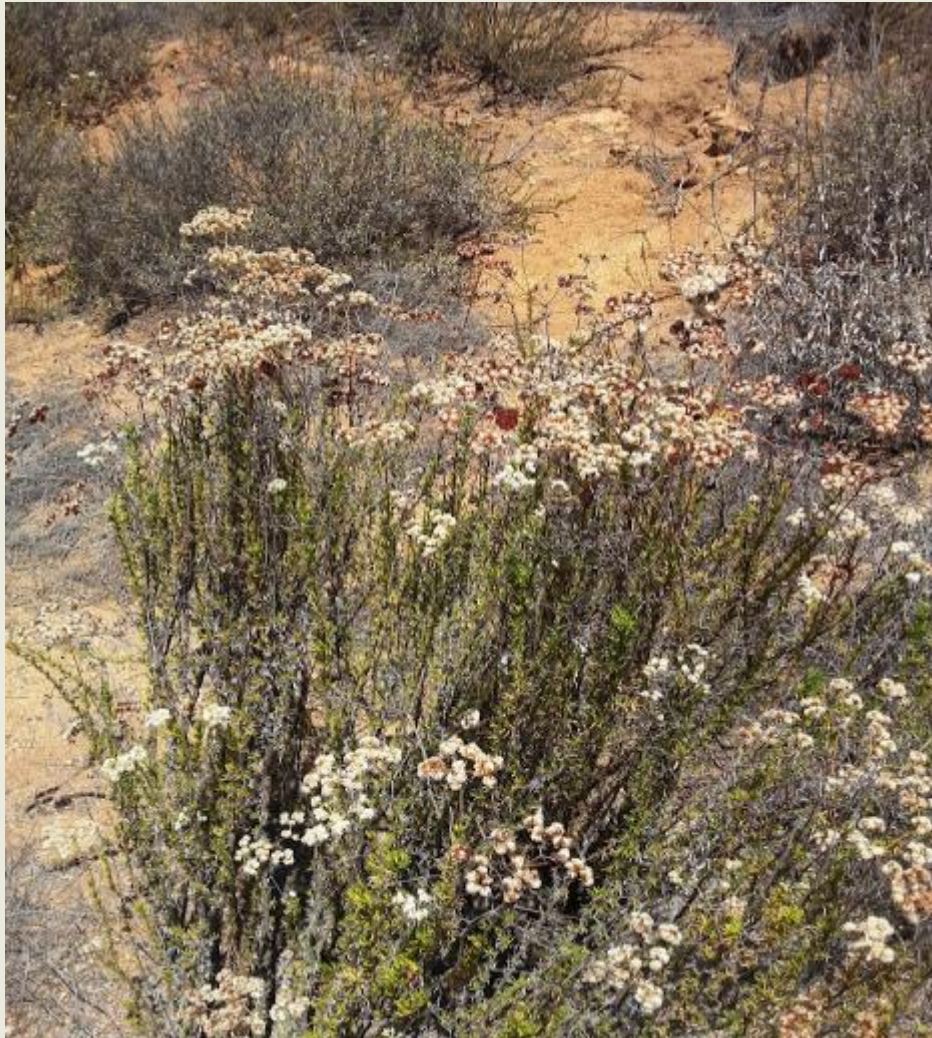
**Hollenbeck Canyon Wildlife Area, Expansions 7 & 8
San Diego County**

#16. Hollenbeck Canyon Wildlife Area, Exp. 7 and 8



Typical vegetation found
on property

#16. Hollenbeck Canyon Wildlife Area, Exp. 7 and 8



Buckwheat plant found on property



#17. Sycuan Peak Ecological Reserve, Exp. 7






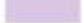


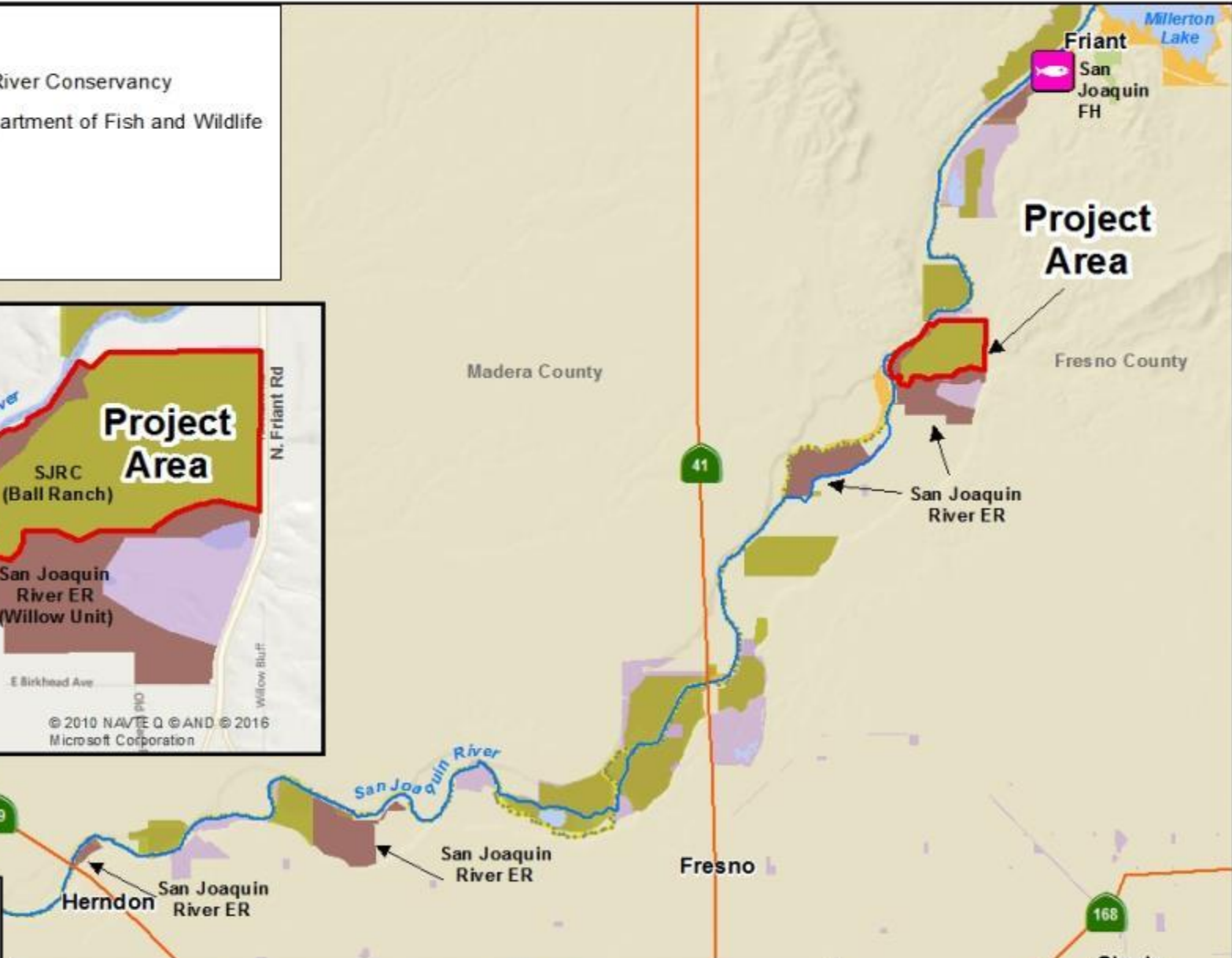
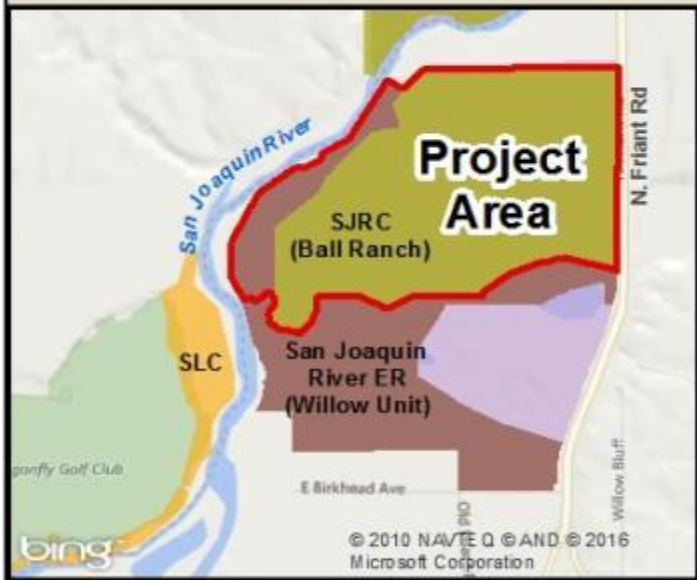
Typical landscape on the property

#17. Sycuan Peak Ecological Reserve, Exp. 7



State endangered Dehesa bear grass

-  Project Area
-  San Joaquin River Conservancy
-  California Department of Fish and Wildlife
-  State
-  Federal
-  Other



**San Joaquin River Parkway
Ball Ranch Habitat Restoration Planning Project
Fresno County**



2 Miles

18 WCB 6/2/2016 lo/WLB

#18. San Joaquin River Parkway, Ball Ranch Habitat Restoration Planning



View of annual grassland and oak woodland in the distance at Ball Ranch

#18. San Joaquin River Parkway, Ball Ranch Habitat Restoration Planning



Oak woodland

#18. San Joaquin River Parkway, Ball Ranch Habitat Restoration Planning



Pond surrounded by riparian vegetation

#18. San Joaquin River Parkway, Ball Ranch Habitat Restoration Planning



Non-native, invasive Tree of Heaven (*ailanthus altissima*). The planning project will identify and map locations of invasive species for removal.



- Project Area
- TNC Conservation Priority Areas
- California Department of Fish and Wildlife
- State
- Federal
- Other

Project Area

**Silver Spur Ranch
Lake County**

7.5 Miles

19 WCB 6/2/2016 lo/WLB



#19. Silver Spur Ranch



Taken from the middle of the property looking south

#19. Silver Spur Ranch



North fork of Cache Creek looking north

#19. Silver Spur Ranch



Looking south on the property towards Cache Creek

#19. Silver Spur Ranch

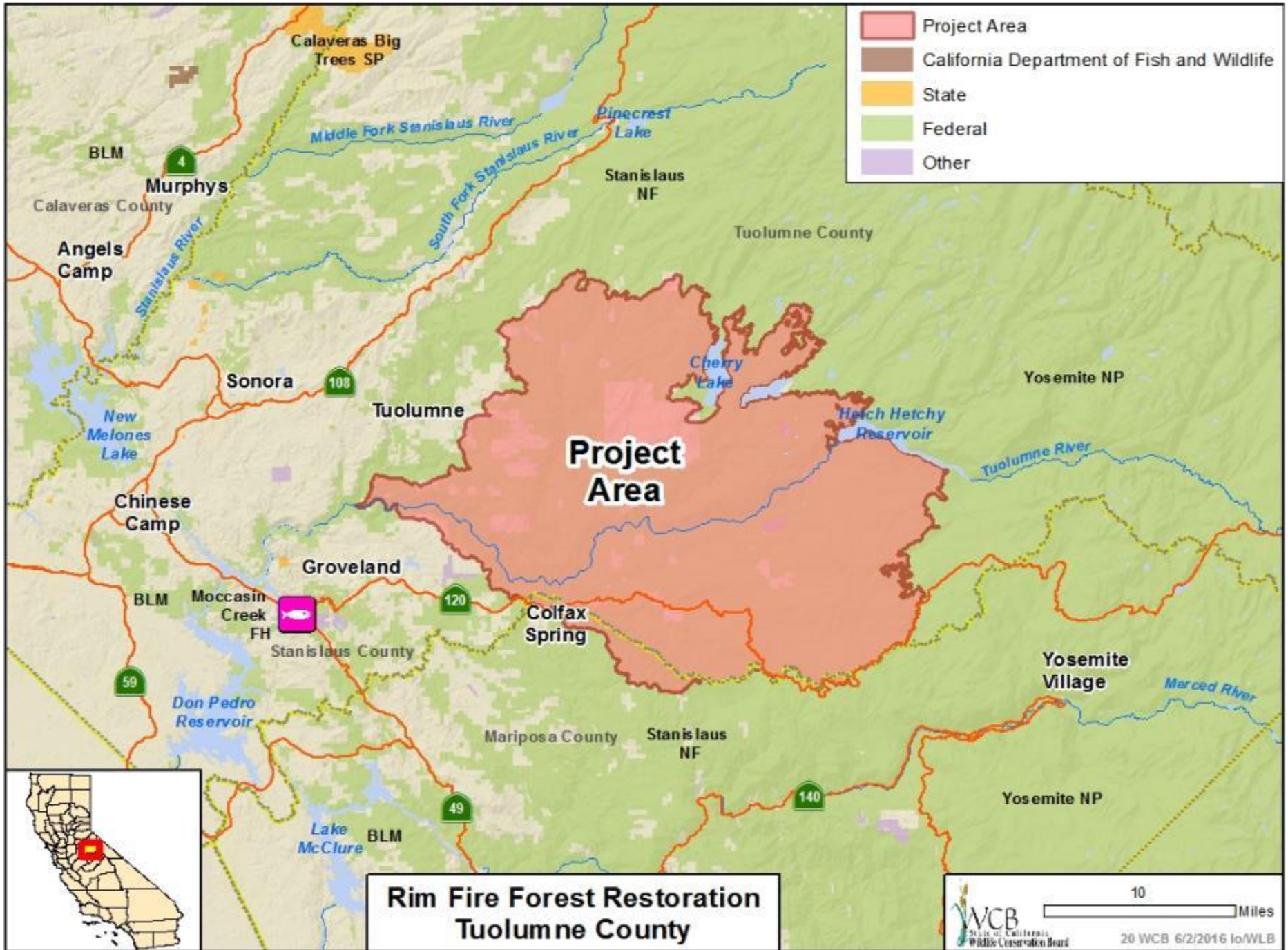


Taken on the south end of the property looking west

#19. Silver Spur Ranch



Looking north on the property along Cache Creek



**Rim Fire Forest Restoration
Tuolumne County**

#20. Rim Fire Forest Restoration



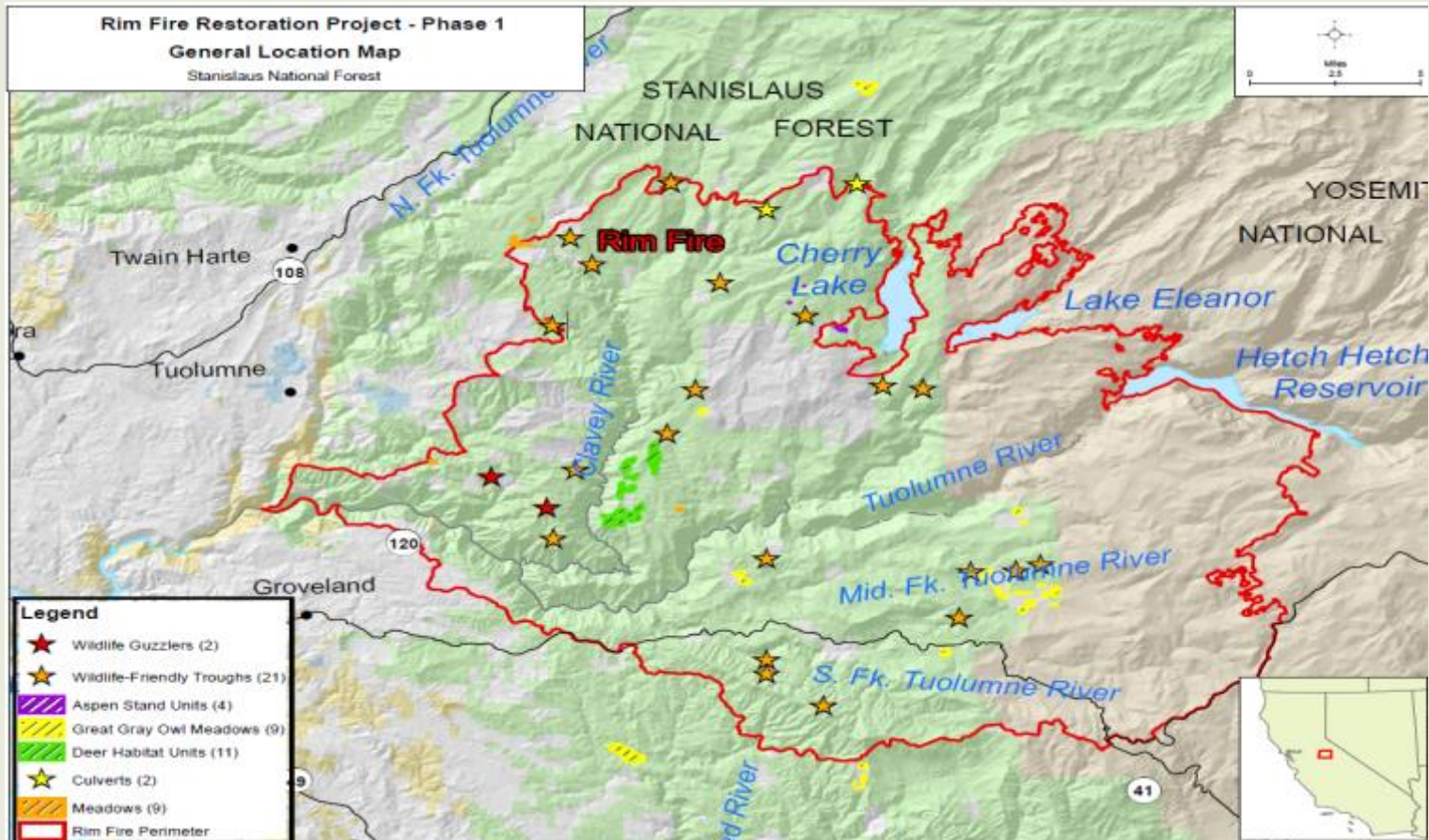
Rim Fire

#20. Rim Fire Forest Restoration



Rim Fire

#20. Rim Fire Forest Restoration



Rim Fire Project Area

#20. Rim Fire Forest Restoration



Example of a Wildlife Guzzler

#20. Rim Fire Forest Restoration



Example of Wildlife Friendly

#20. Rim Fire Forest Restoration



Example of Aspen Stand before treatment

#20. Rim Fire Forest Restoration



Example of an Aspen Stand after treatment

#20. Rim Fire Forest Restoration



Great Grey Owl nest

#20. Rim Fire Forest Restoration





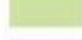



Example of meadow prior to restoration – Leland Gully
September 2010

#20. Rim Fire Forest Restoration

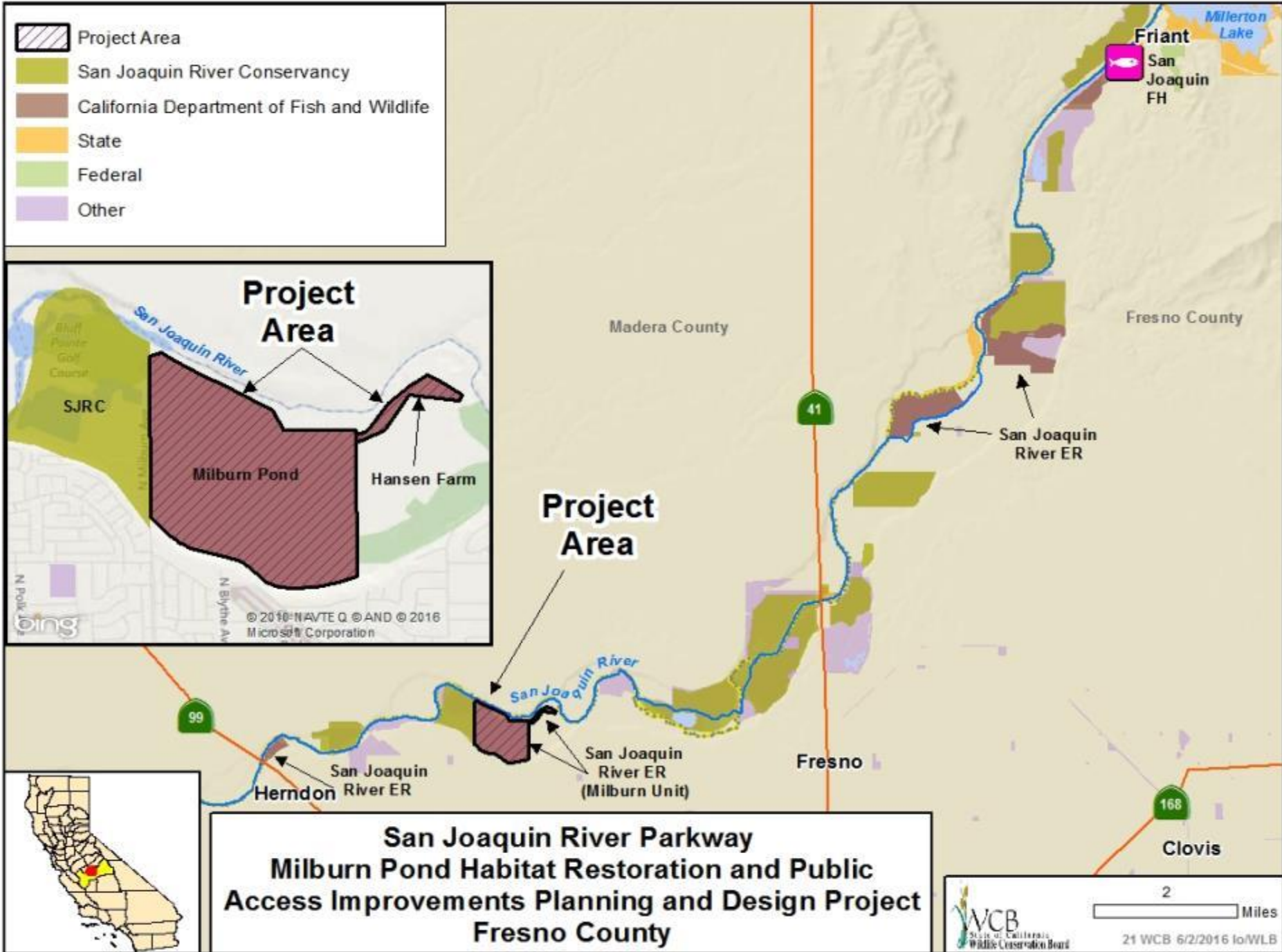


Example of post meadow restoration – Leland Gully
October 2011

-  Project Area
-  San Joaquin River Conservancy
-  California Department of Fish and Wildlife
-  State
-  Federal
-  Other



**San Joaquin River Parkway
Milburn Pond Habitat Restoration and Public
Access Improvements Planning and Design Project
Fresno County**



#21. San Joaquin River Parkway, Milburn Pond Habitat Restoration and Public Access Improvements Planning and design



A view of Milburn Pond

#21. San Joaquin River Parkway, Milburn Pond Habitat Restoration and Public Access Improvements Planning and design



1.



3.



2.



4.



This time sequence shows the creation of Milburn Pond

#21. San Joaquin River Parkway, Milburn Pond Habitat Restoration and Public Access Improvements Planning and design



Breached and degraded berm

#21. San Joaquin River Parkway, Milburn Pond Habitat Restoration and Public Access Improvements Planning and design



View of the Hansen Parcel from the north side of the river

The berm between Milburn Pond and the river is in poor condition



#21. San Joaquin River Parkway, Milburn Pond Habitat Restoration and Public Access Improvements Planning and design



2001

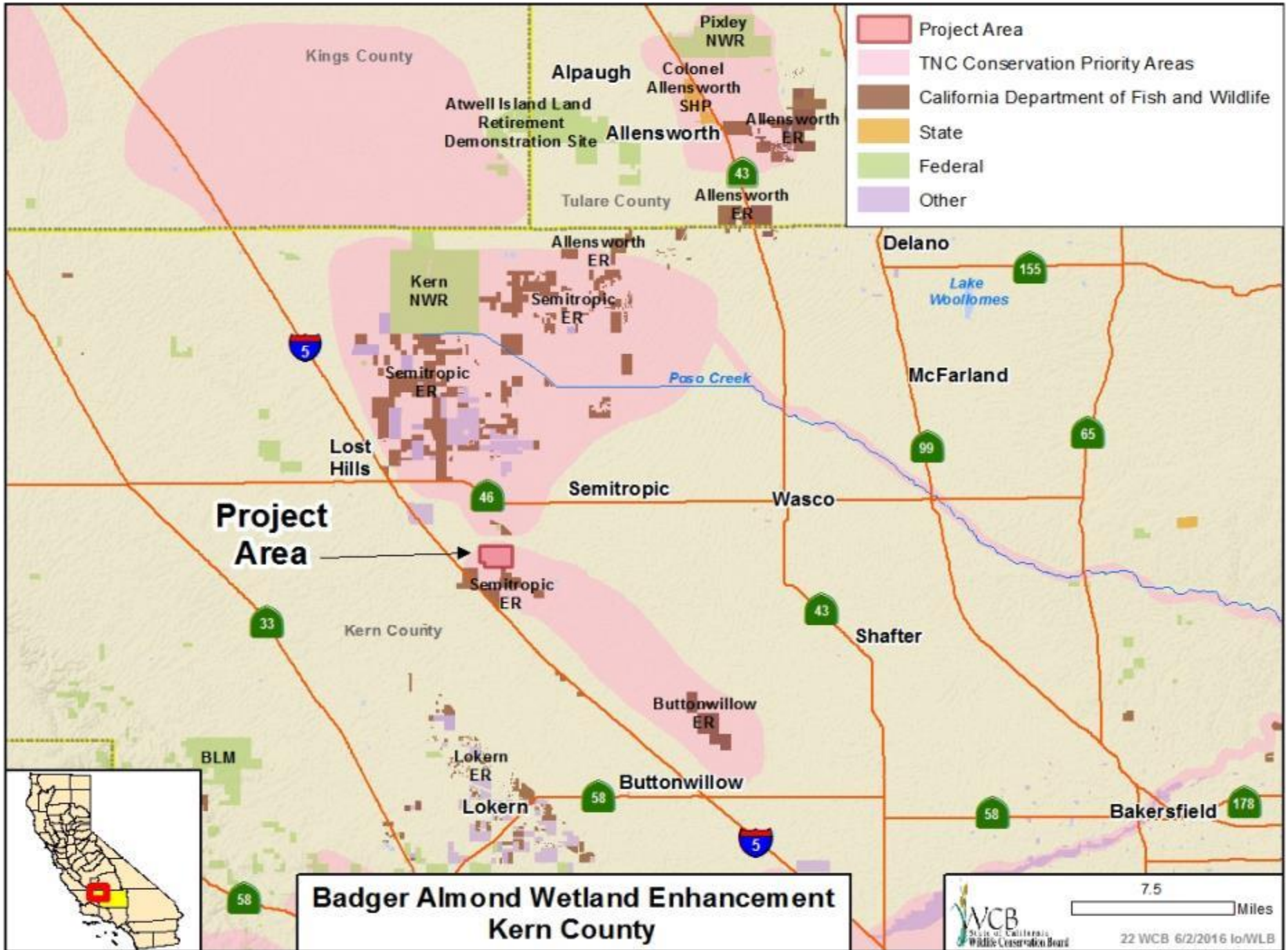


2004



2013

Planning to Implementation:
An example of restored habitat and
improved floodplain function



**Badger Almond Wetland Enhancement
Kern County**


 State of California
 Wildlife Conservation Board

7.5 Miles
 22 WCB 6/2/2016 lo/WLB



Wetlands Habitat: 643 acres
 Irrigated Uplands: 26 acres
 Upland Habitat: 250 acres

Unit 9
 35 Acres
 Seasonal Wetland
 WSE @ 49.5'
 Cut/Fill @ 48.5'

Unit 10
 43 Acres
 Seasonal Wetland
 WSE @ 49.8'
 Cut/Fill @ 48.8"

Slough
 4 Acres

Slough
 13 Acres

Unit 8
 64 Acres
 Seasonal Wetland
 WSE @ 49.3'
 Cut/Fill @ 48.3'

Unit 7
 57 Acres
 Seasonal Wetland
 WSE @ 49.5'
 Cut/Fill @ 48.5'

Unit 1
 69.1 Acres
 Seasonal Wetland

Unit 11
 51 Acres
 Seasonal Wetland
 WSE @ 49.0'
 Cut/Fill @ 48.0"

Unit 2
 74.5 Acres
 Seasonal Wetland

NRCS Restoration
 320 Acres

Unit 12
 2.3 Acres
 Semi-permanent
 WSE @ 50.0'
 Cut/Fill @ 47.0"

Unit 3
 74.5 Acres
 Seasonal Wetland

Unit 6
 44 Acres
 Seasonal Wetland
 WSE @ 49.0'
 Cut/Fill @ 48.0'

Unit 5
 43 Acres
 Seasonal Wetland
 WSE @ 48.5'
 Cut/Fill @ 47.5'

Irrigated Upland
 25 Acres

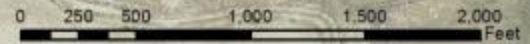
Unit 4
 68.7 Acres
 Seasonal Wetland

California Waterfowl's Badger Almond Wetland Restoration Project



- ★ New Well
- New Valve
- ↑ New WCS
- Potholes
- New Pipeline
- Refurbish Levee
- - - New Levee
- New Swale
- - - Levee Removal
- Swale Fill
- ▨ Pothole Fill

- + Existing Well
- Existing Valves
- Existing Island
- Existing Pothole
- Existing Swale
- Existing Pipeline
- Newly Restored Levee



Wetlands Habitat: 643 acres
 Irrigated Uplands: 26 acres
 Upland Habitat: 250 acres

- ★ New Well
- ⊙ New Valve
- ↑ New WCS
- Potholes
- New Pipeline
- Refurbish Levee
- - - New Levee
- New Swale
- ⊕ Existing Well

Unit 9
 35 Acres
 Seasonal Wetland
 WSE @ 49.5'
 Cut/Fill @ 48.5'

Unit 10
 43 Acres
 Seasonal Wetland
 WSE @ 49.8'
 Cut/Fill @ 48.8"

Slough
 4 Acres

Slough
 13 Acres

Unit 8
 64 Acres
 Seasonal Wetland
 WSE @ 49.3'
 Cut/Fill @ 48.3'

Unit 11
 51 Acres
 Seasonal Wetland
 WSE @ 49.0'
 Cut/Fill @ 48.0'

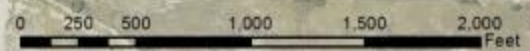
Unit 7
 57 Acres
 Seasonal Wetland
 WSE @ 49.5'
 Cut/Fill @ 48.5'

Unit 12
 2.3 Acres
 Semi-permanent
 WSE @ 50.0'
 Cut/Fill @ 47.0"

Unit 6
 44 Acres
 Seasonal Wetland
 WSE @ 49.0'
 Cut/Fill @ 48.0'

Unit 5
 43 Acres
 Seasonal Wetland
 WSE @ 48.5'
 Cut/Fill @ 47.5'

California Waterfowl's Badger Almond Wetland Restoration Project



#22. Badger Almond Wetland Enhancement



Restored wetland with new control structure and swale. Moist soil germination. The goal of this project is to emulate these results

#22. Badger Almond Wetland Enhancement



New willow plantings on previously restored wetland units adjacent to proposed project. Willow plantings are included in the new project

#22. Badger Almond Wetland Enhancement



Proposed habitat to be restored

#22. Badger Almond Wetland Enhancement

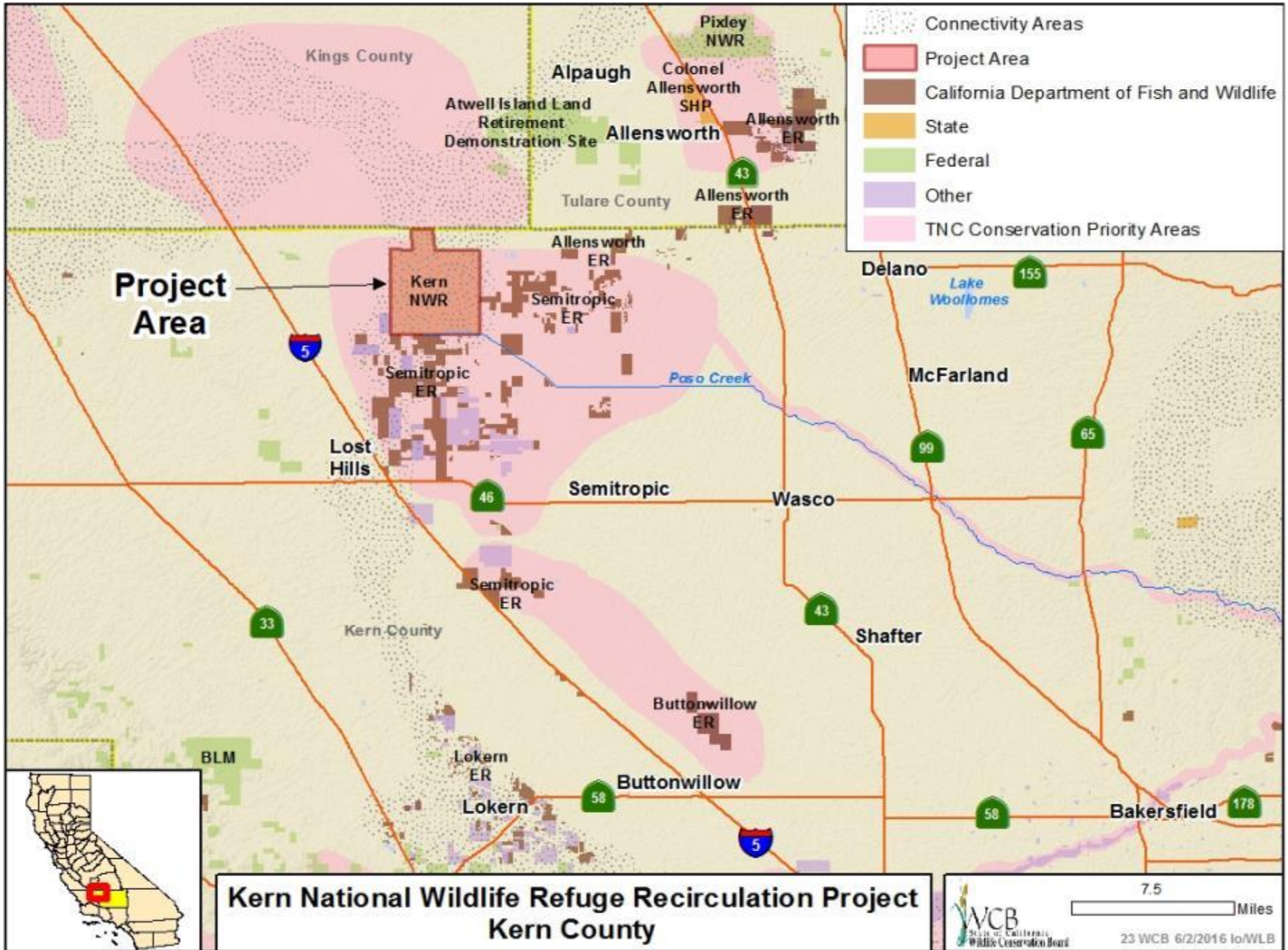


Site of proposed new deep well

#22. Badger Almond Wetland Enhancement



Previously restored wetland on site



- Connectivity Areas
- Project Area
- California Department of Fish and Wildlife
- State
- Federal
- Other
- TNC Conservation Priority Areas

Project Area

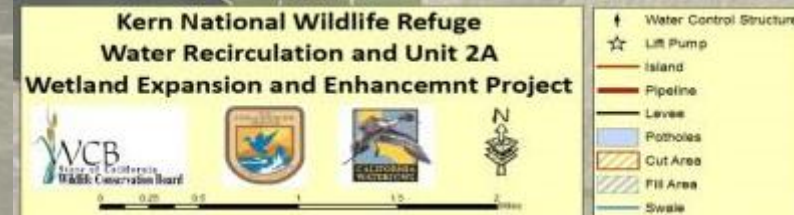
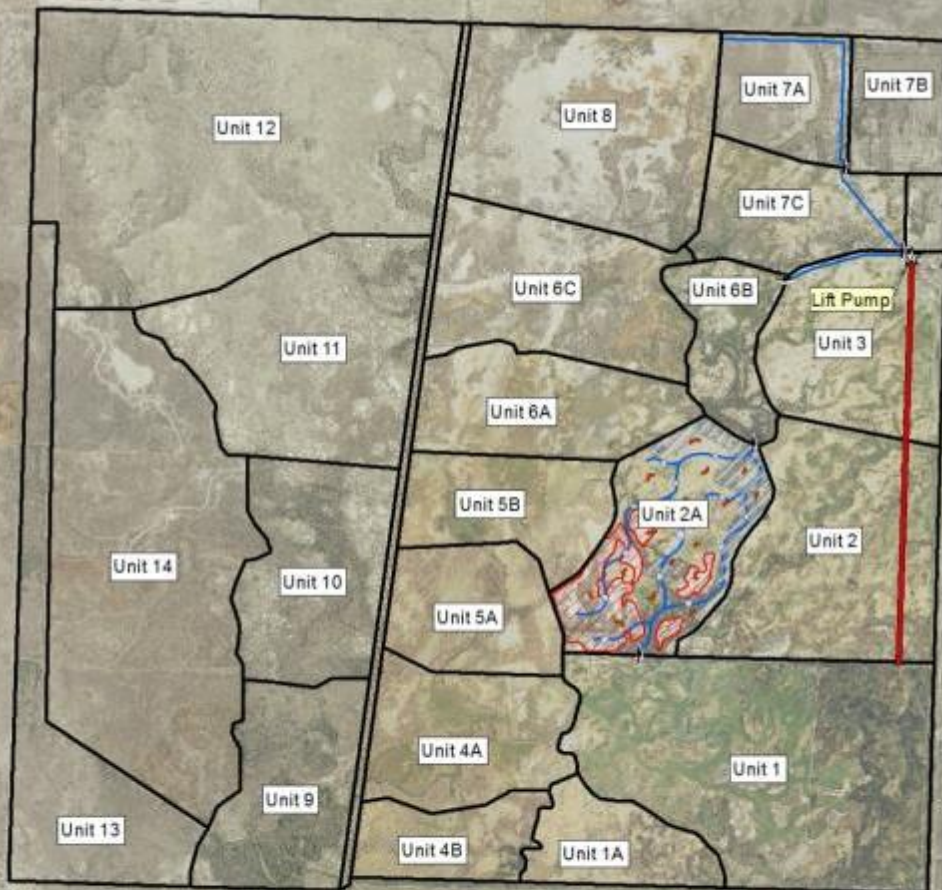
**Kern National Wildlife Refuge Recirculation Project
Kern County**

7.5 Miles

23 WCB 6/2/2016 lo/WLB

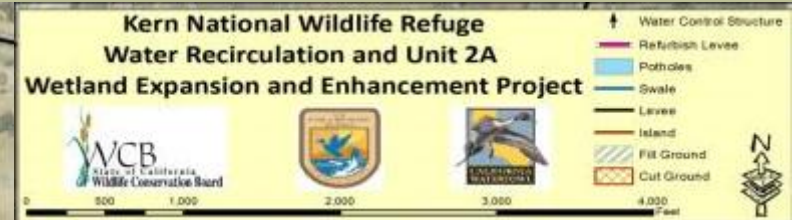
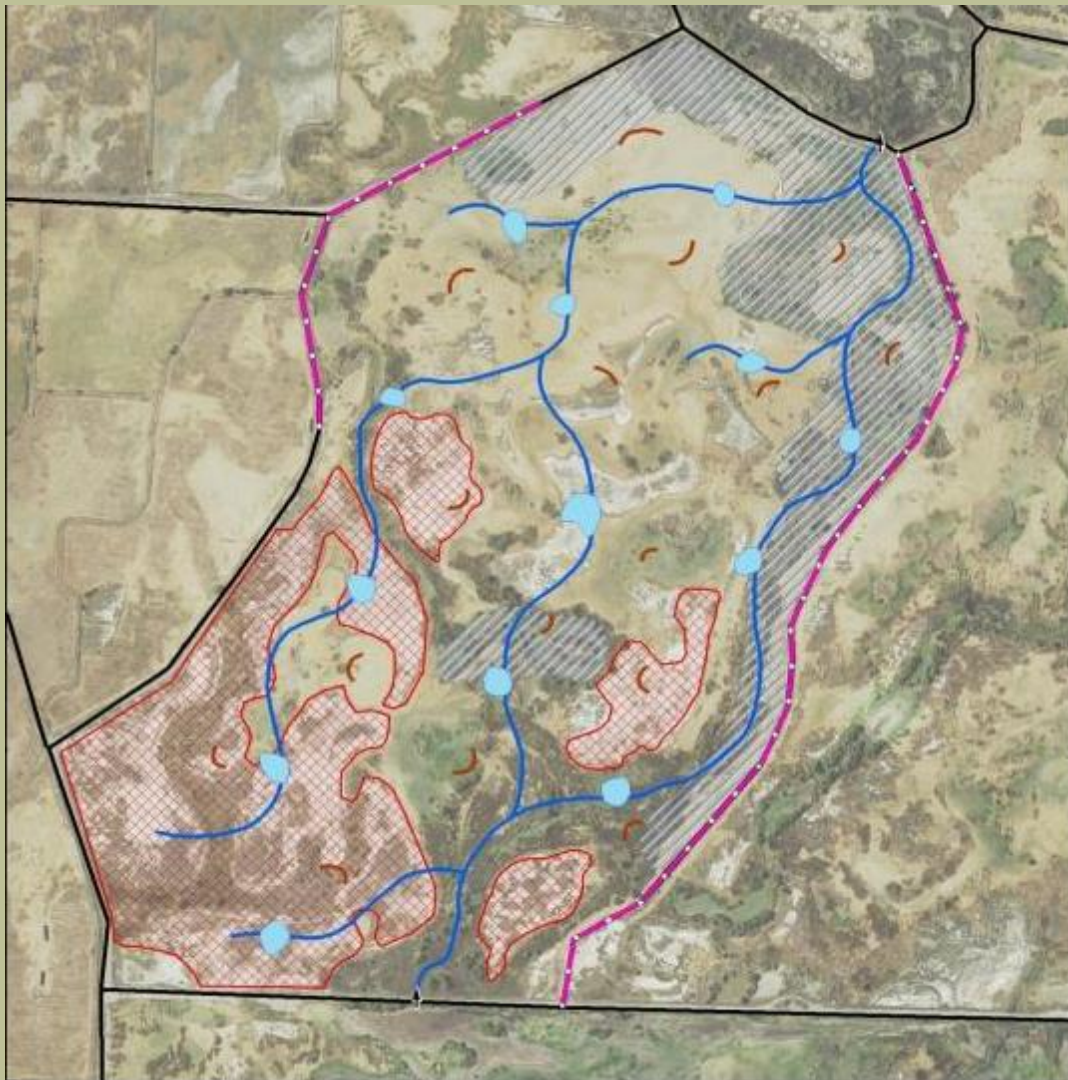


#23. Kern National Wildlife Refuge Recirculation



Water Recirculation
Plan for the Kern
National Wildlife
Refuge

#23. Kern National Wildlife Refuge Recirculation



Wetland
Enhancement Plan
for Unit 2A

#23. Kern National Wildlife Refuge Recirculation



Unit 2 site of wetland expansion and restoration area

#23. Kern National Wildlife Refuge Recirculation



Area planned for restoration to allow moist soil management. Earthwork, installation of swales.

#23. Kern National Wildlife Refuge Recirculation



Salt Cedar removal coupled with earthwork leveling and installation of swales to enhance drainage

#23. Kern National Wildlife Refuge Recirculation



Existing wetland habitat on the Kern National Wildlife Refuge



**Upper Devereux Slough Restoration
Santa Barbara County**

#24. Upper Devereux Slough Restoration



Aerial view

#24. Upper Devereux Slough Restoration



Ocean Meadows Golf Course

#24. Upper Devereux Slough Restoration



Flooded golf course scene from a rain event demonstrating the potential for this to be a functioning wetland

#24. Upper Devereux Slough Restoration



Habitat map showing diversity of habitats preserved and restored on site

#24. Upper Devereux Slough Restoration

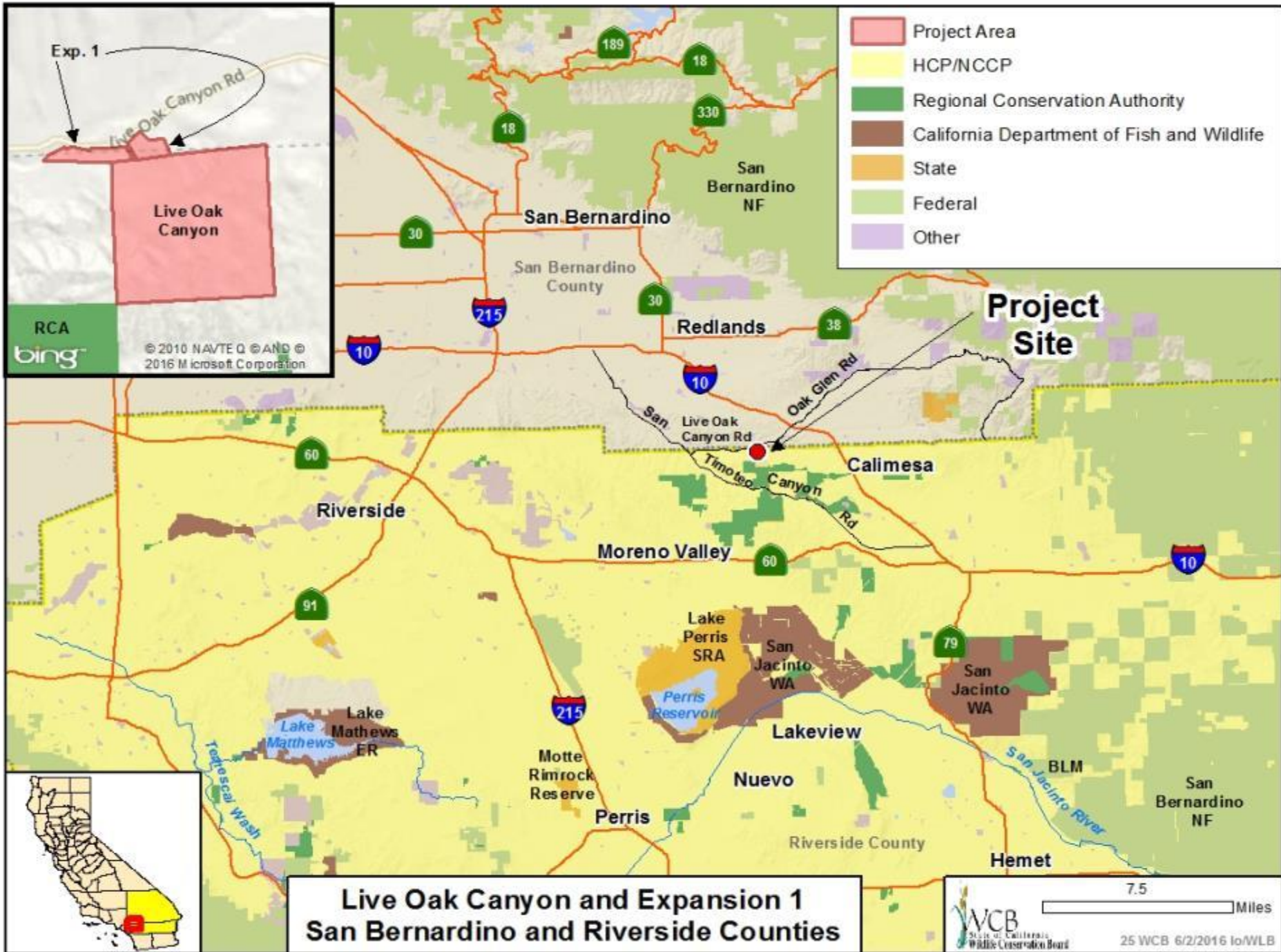


Habitat type that will be expanded and restored as part of the project

#24. Upper Devereux Slough Restoration



Functionality of existing remnant of Devereux Slough for migratory and resident wetland associated bird species



**Live Oak Canyon and Expansion 1
San Bernardino and Riverside Counties**

San Timoteo Canyon Acquisition Strategy Map April, 2016

Legend

- Existing Public Lands
- Proposed Partnership Project
WCB, RCA, RLC, Redlands
- Active RLC Projects

REDLANDS

YUCAIPA

SAN BERNARDINO COUNTY
RIVERSIDE COUNTY

CALIMESA

HOLMES BROS.
TRUST

MESSERSMITH

SAVAGE

CHERRY
VALLEY

UPRR

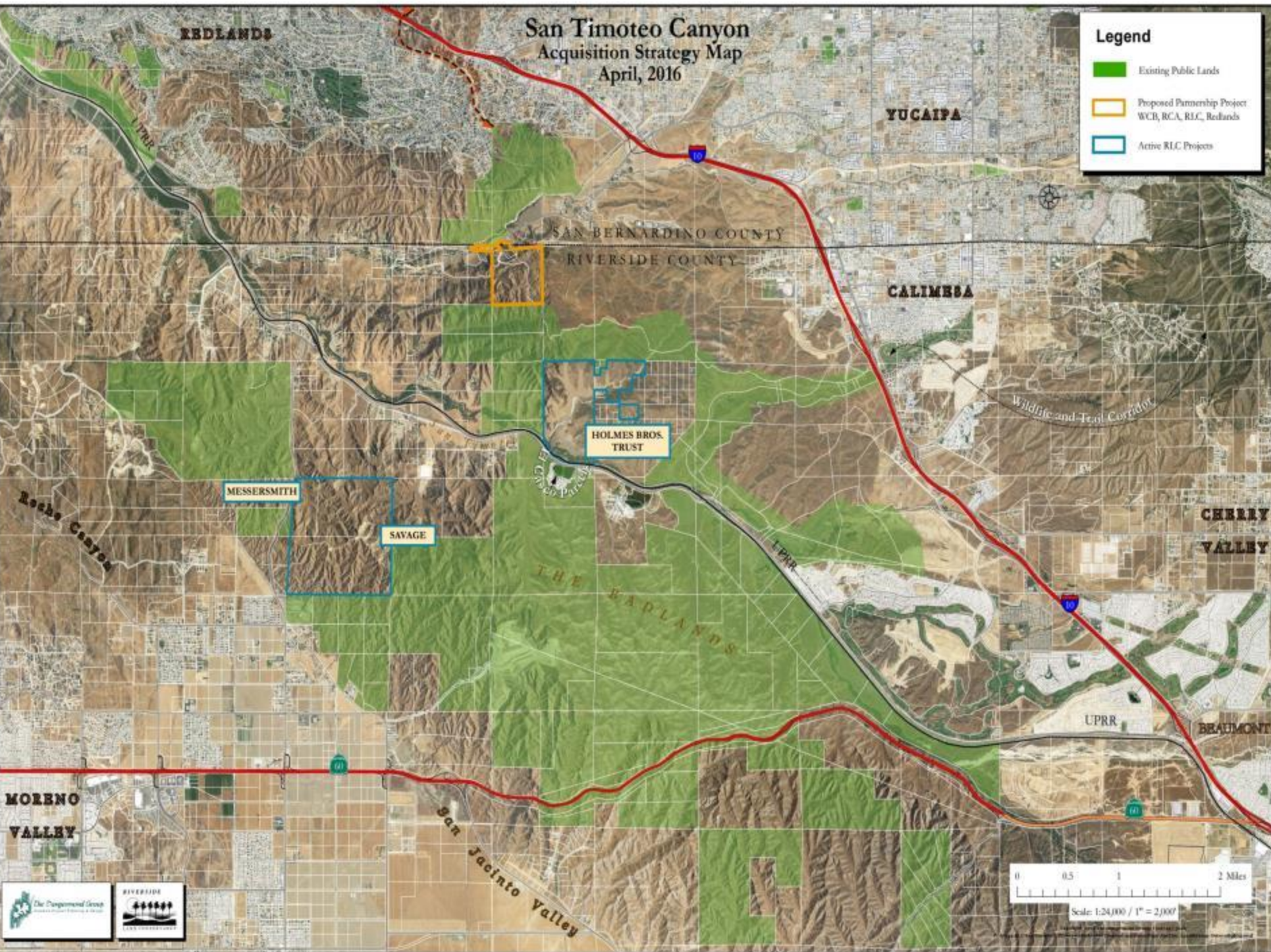
BEAUMONT

MORENO
VALLEY

San Jacinto Valley

0 0.5 1 2 Miles

Scale: 1:24,000 / 1" = 2,000'



#25. Live Oak Canyon and Expansion 1



The subject property is improved with house, garage, small hay/horse barn and fencing

#25. Live Oak Canyon and Expansion 1



Subject property facing northwest towards the San Gabriel Mountains

#25. Live Oak Canyon and Expansion 1

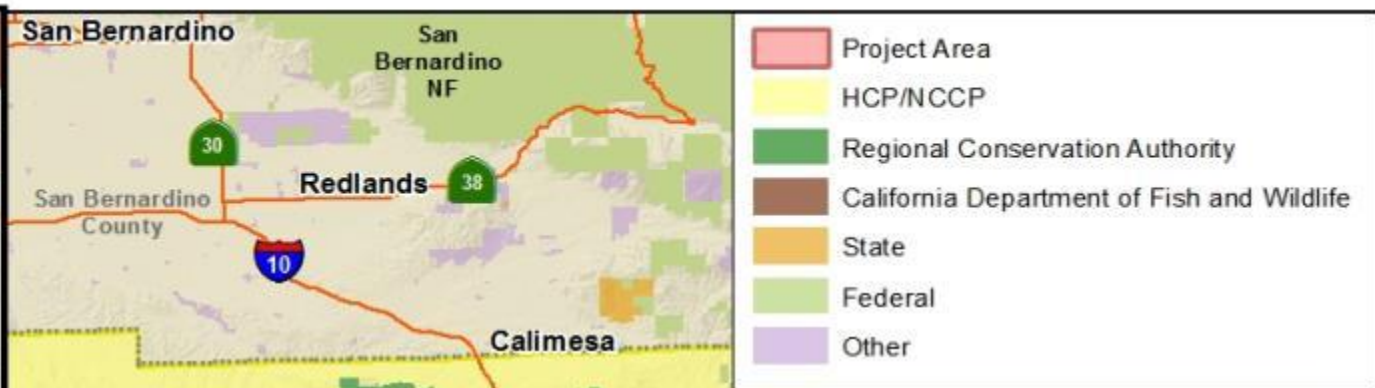


View facing southeast towards Mount San Jacinto

#25. Live Oak Canyon and Expansion 1



View northeast towards the San Bernardino Mountains



**Western Riverside MSHCP (2012) - Riverpark
Riverside County**

7.5 Miles

WCB
State of California
Wildlife Conservation Board

26 WCB 6/2/2016 lo/WLB

#26. Western Riverside MSHCP (2012) - Riverpark

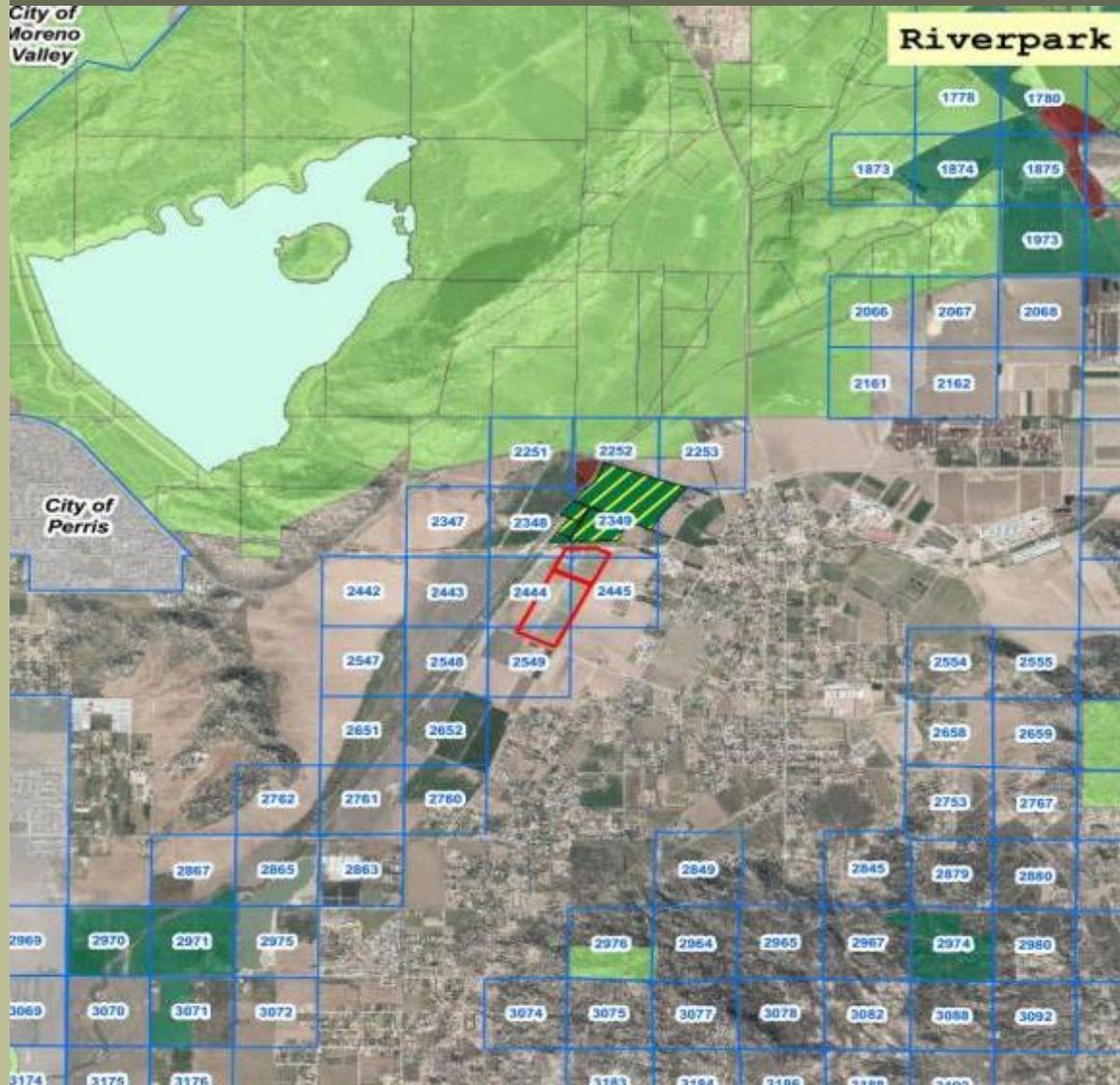


Photo courtesy of the Western Riverside
County Regional Conservation Authority

#26. Western Riverside MSHCP (2012) - Riverpark



View of the center of the Riverpark property looking north

#26. Western Riverside MSHCP (2012) - Riverpark



View from center of the Riverpark property looking south

#26. Western Riverside MSHCP (2012) - Riverpark



View of the Riverpark property looking westward



- Project Site
- California Department of Fish and Wildlife
- State
- Federal
- Other

**Red Hill Bay Shallow Water Habitat
Imperial County**

#27. Red Hill Bay Shallow Water Habitat



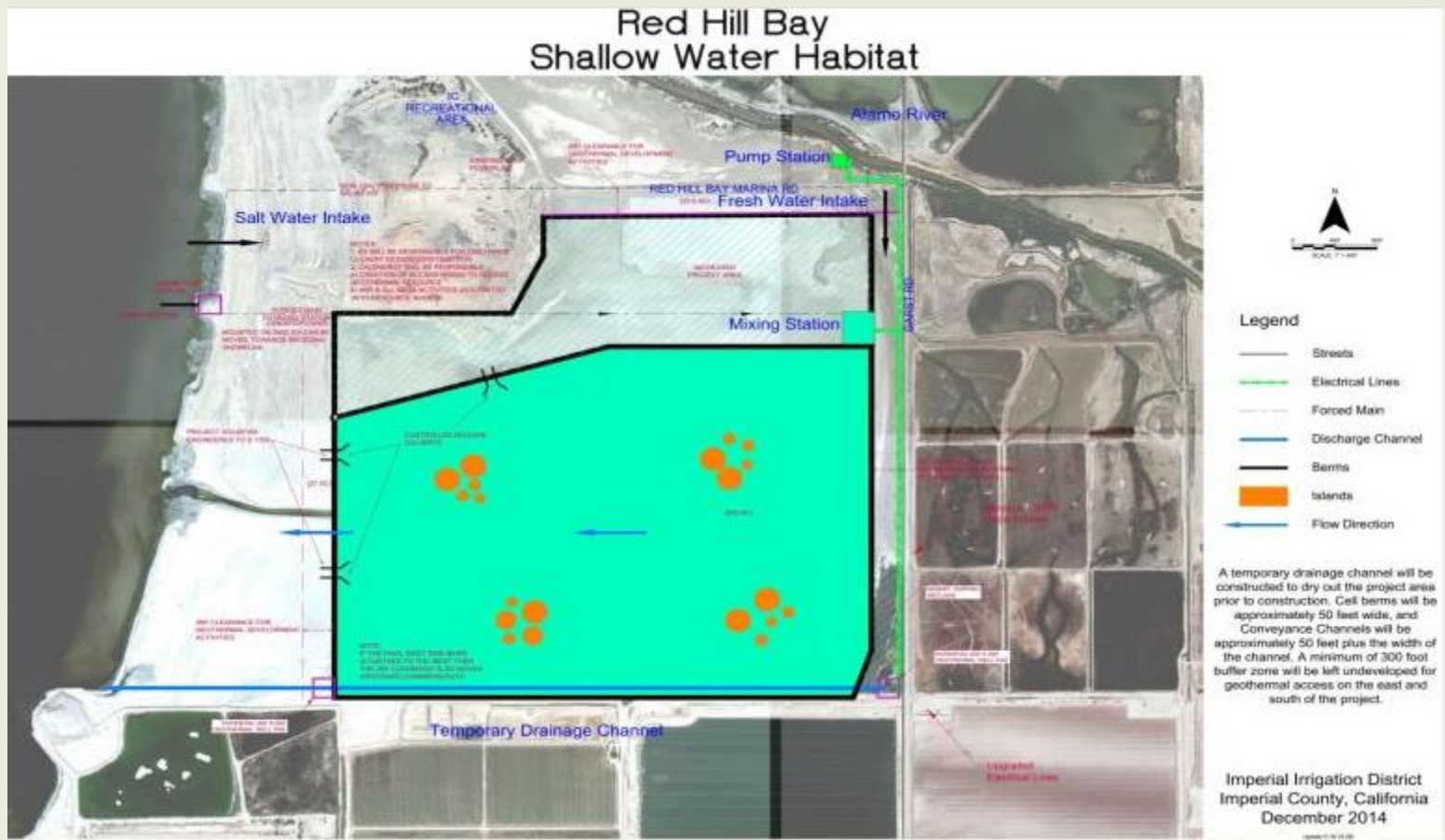
Aerial overview of the project site

#27. Red Hill Bay Shallow Water Habitat

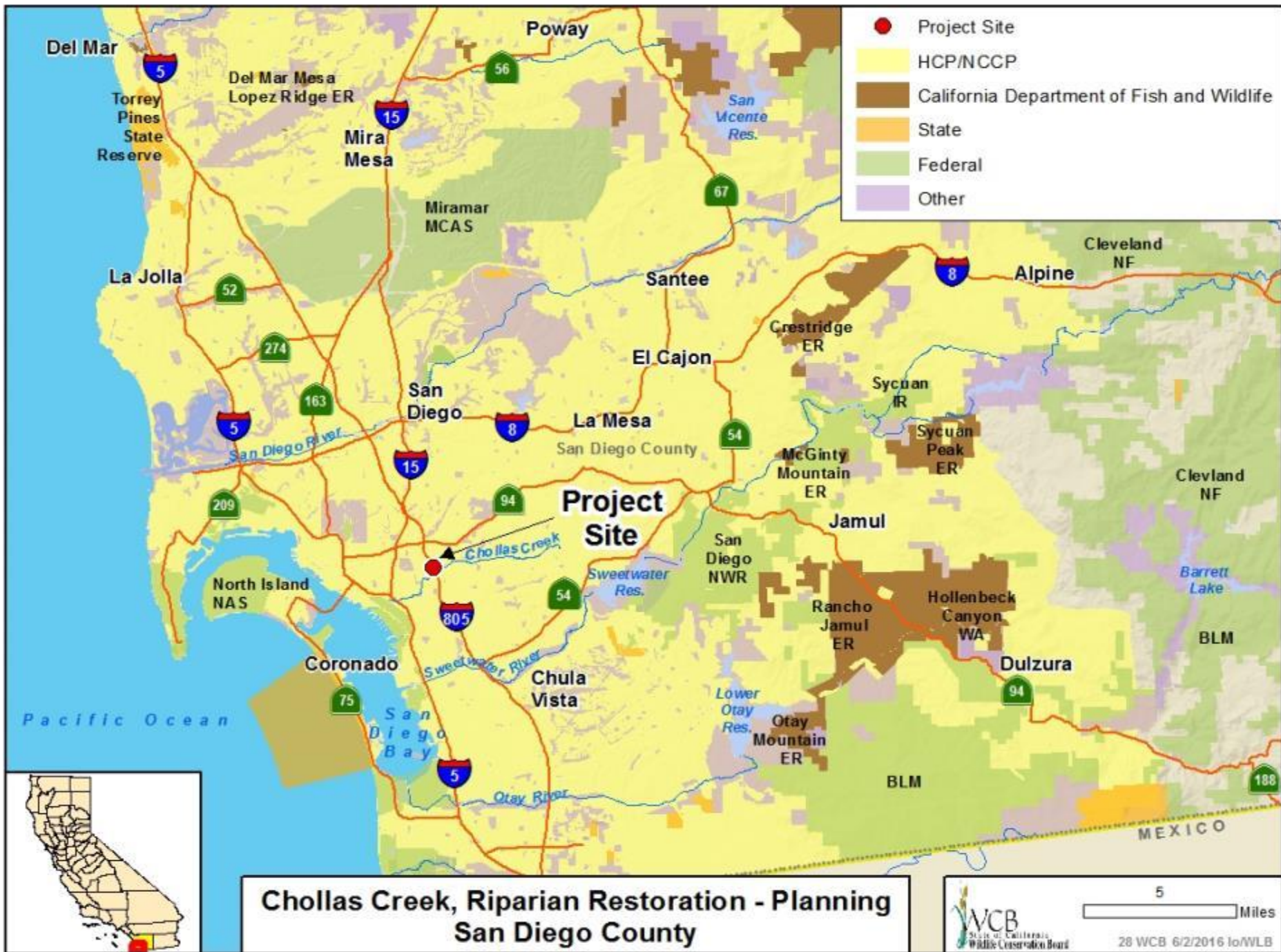


Red Hill Bay

#27. Red Hill Bay Shallow Water Habitat



Site plan



#28. Chollas Creek, Riparian Restoration - Planning



Aerial view

#28. Chollas Creek, Riparian Restoration - Planning



Arizona Crossing – north slope in background looking towards cemetery

#28. Chollas Creek, Riparian Restoration - Planning



Flood Channel with concrete bank – south bank

#28. Chollas Creek, Riparian Restoration - Planning



Bottom flood channel – east channel

#28. Chollas Creek, Riparian Restoration - Planning



Chollas Creek - after a storm

#28. Chollas Creek, Riparian Restoration - Planning



Erosion control & native plant installation – Urban Corps

June 2, 2016, 10:00am
Wildlife Conservation Board Meeting
1416 9th Street, First floor Auditorium
Sacramento, California 95814

