

# **Western Golden Eagle Conservation Team**

**California-Nevada Golden Eagle Working Group Update  
November 2015**



**Brian Woodbridge, Coordinator  
Western Golden Eagle Conservation Team  
U.S. Fish and Wildlife Service, Yreka, CA**

# 2015-2016 Update

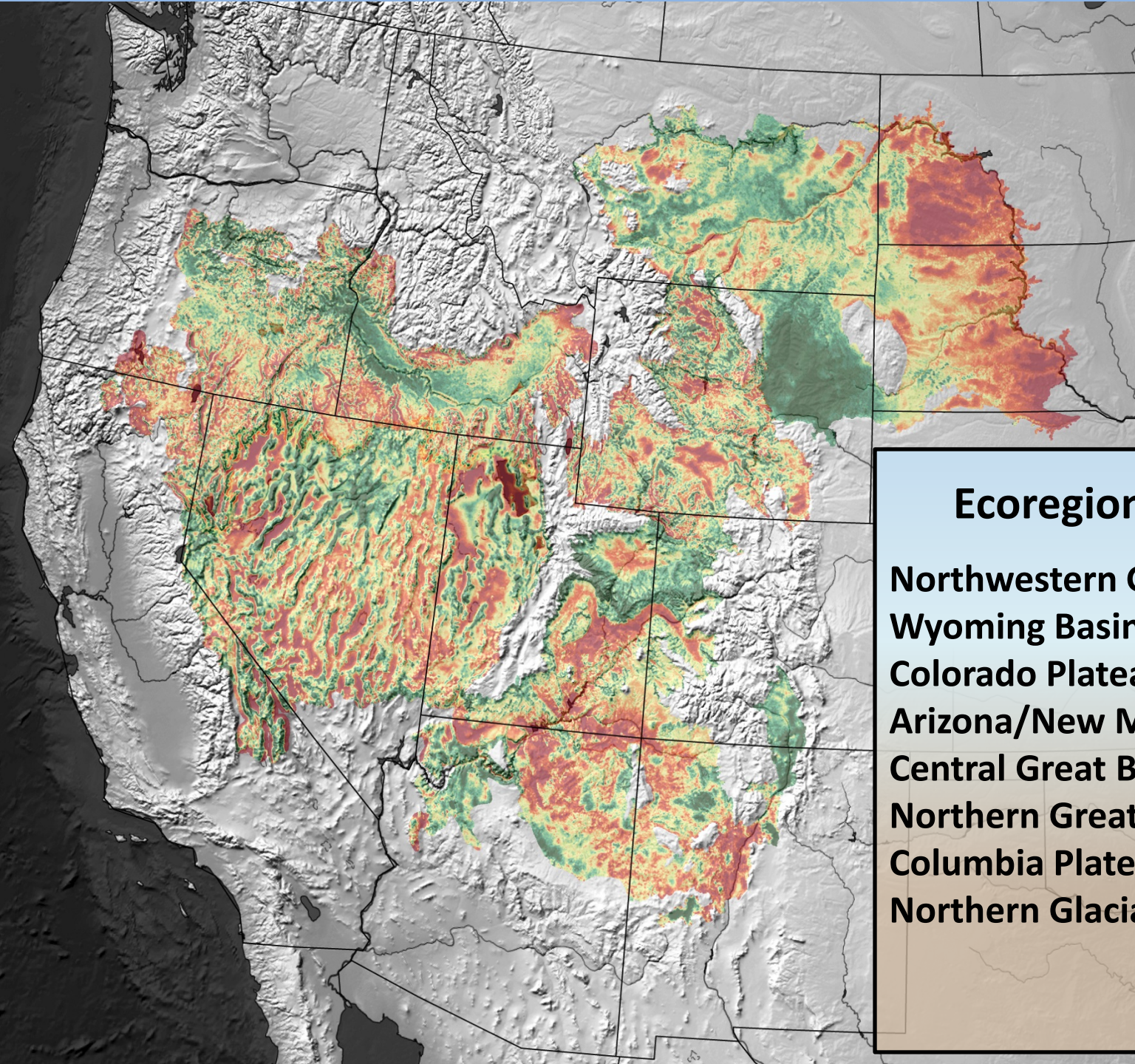
- In FY 2016 WGET downsizing to 4 FWS staff plus coordinator
- Continued funding for projects with cooperators
- Cooperative Ecosystem Study Unit agreements with University of Nevada, Reno; Humboldt State U., Boise State U. and Colorado State U.
- 37 ongoing projects
- Over 20 presentations at 2015 RRF Conference



# I. Predictive Models of Golden Eagle Breeding Habitat







## **Ecoregional Models**

**Northwestern Great Plains**

**Wyoming Basin**

**Colorado Plateau**

**Arizona/New Mexico Plateaus**

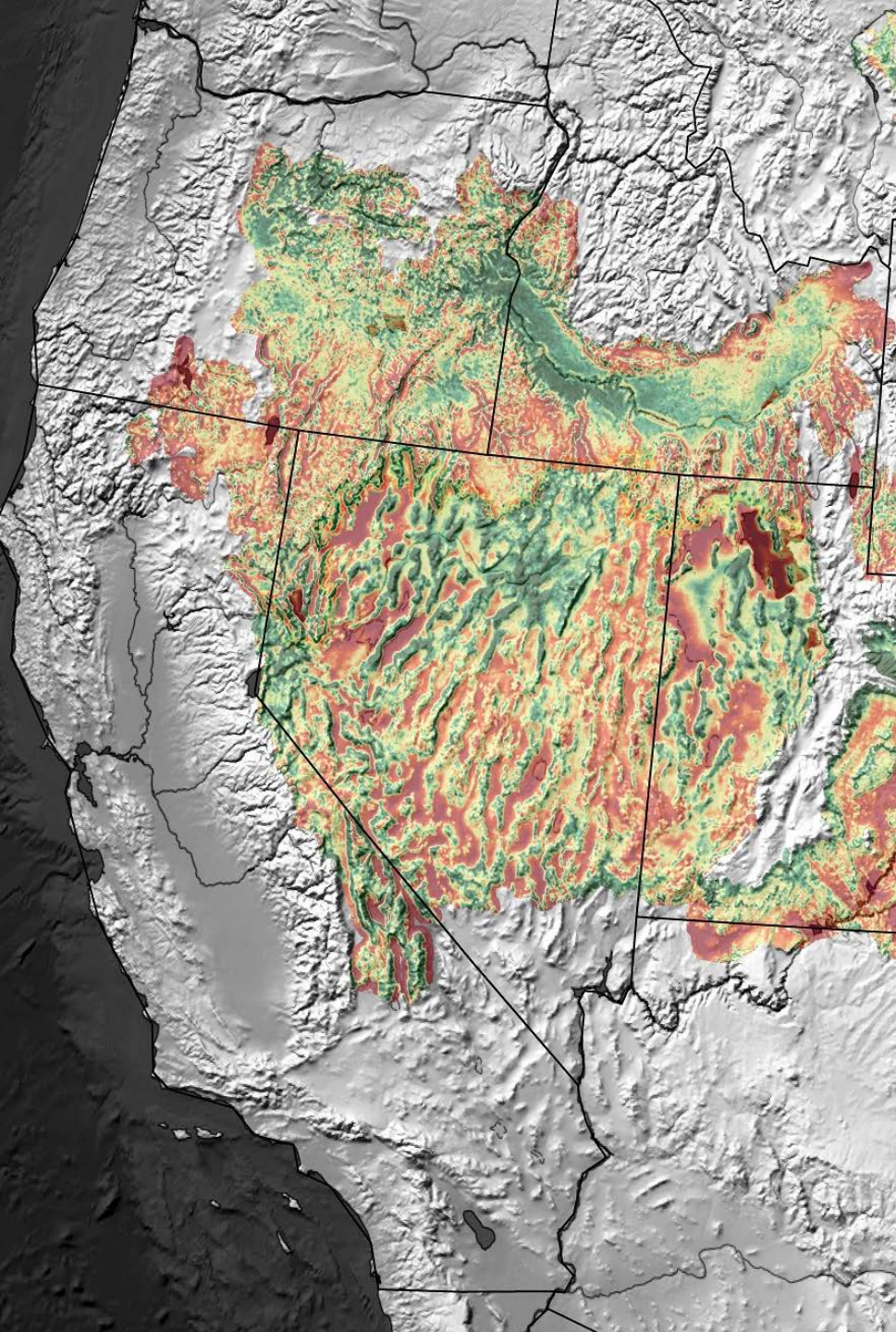
**Central Great Basin**

**Northern Great Basin**

**Columbia Plateau\***

**Northern Glaciated Plains\***





# Breeding Habitat Models California & Nevada

Northern Central Great/Snake  
River Plain Ecoregion

Central Great Basin Ecoregion

## **Draft models**

Expert review workshops:  
Reno, Salt Lake City, Boise,  
Portland

Revised models - November  
2015

## II. Predictive Model of MID-WINTER Landscape Use by Golden Eagles

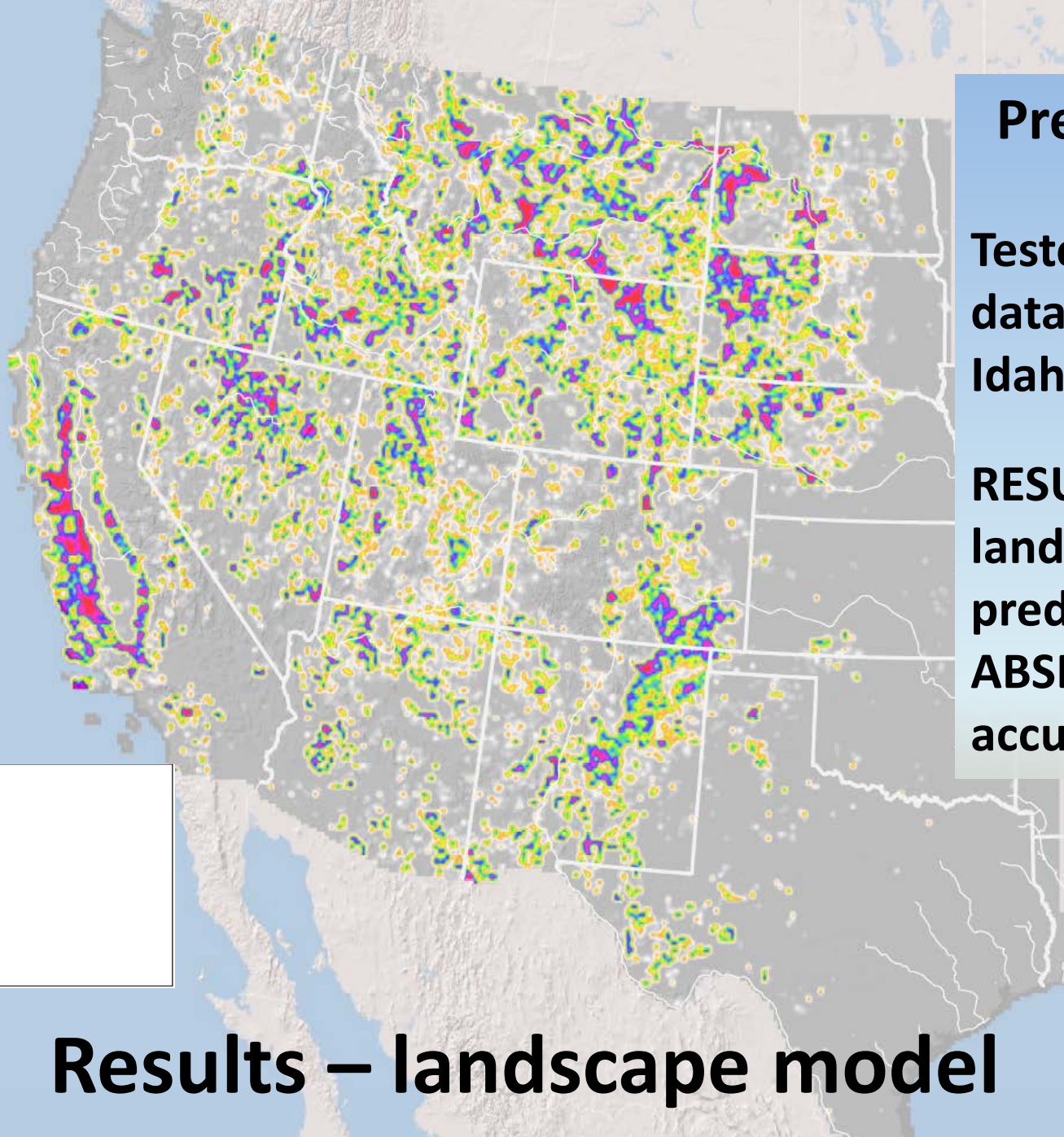


**Partners: Leo Salas, Dennis Jongsomjit, Nathan Elliott & Sam Veloz  
Point Blue Conservation Science**

**Eastern Cascades Audubon  
Nevada Dept. of Wildlife  
Hawkwatch Int'l.**

*Stay the Night*





## Predictive Accuracy

Tested against NEW datasets from Oregon, Idaho and Nevada

**RESULT:** the draft landscape models predict PRESENCE and ABSENCE with 84% accuracy

Seeking additional test data!

**Results – landscape model**



*Shy de Light*

### **III. Predictive Models of Golden Eagle Movements and Migration**



# Objectives -

- **Step 1: Describe and model patterns of movement \***
  - **Step 2: Model factors influencing movement routes**
- Compile and analyze telemetry data (ARGOS, GPS, CTT) from cooperators throughout North America
  - Focus on landscapes and ecological conditions disproportionately used for movement and migration



Core Team:  
Carol McIntyre  
Jessica Brown  
Todd Katzner  
Jeff Smith  
Robert Murphy  
Jim Watson  
Brian Woodbridge

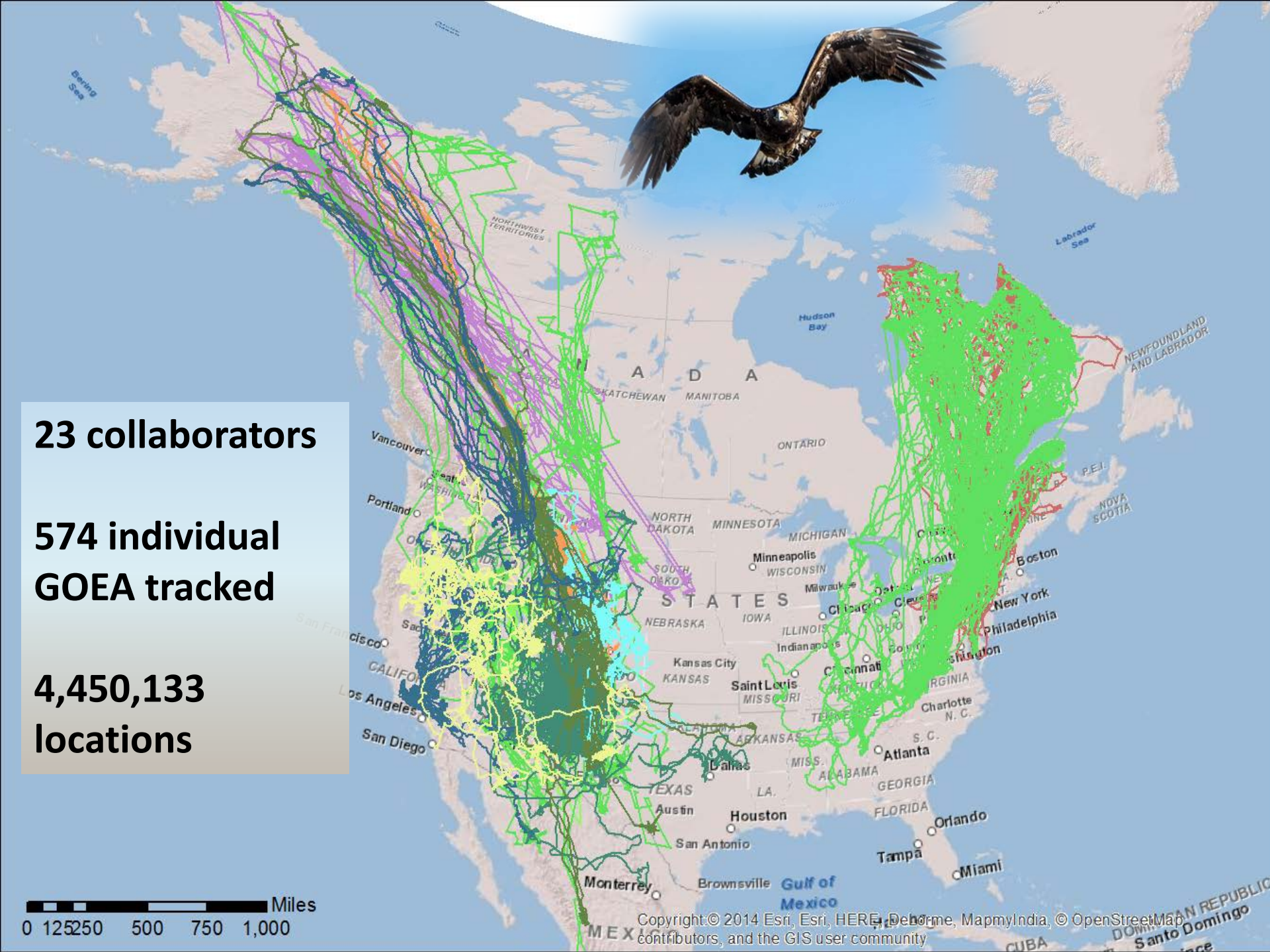
**23 collaborators**

**574 individual  
GOEA tracked**

**4,450,133  
locations**

0 125 250 500 750 1,000 Miles

Copyright © 2014 Esri, Esri, HERE, DeLorme, MapmyIndia, © OpenStreetMap contributors, and the GIS user community



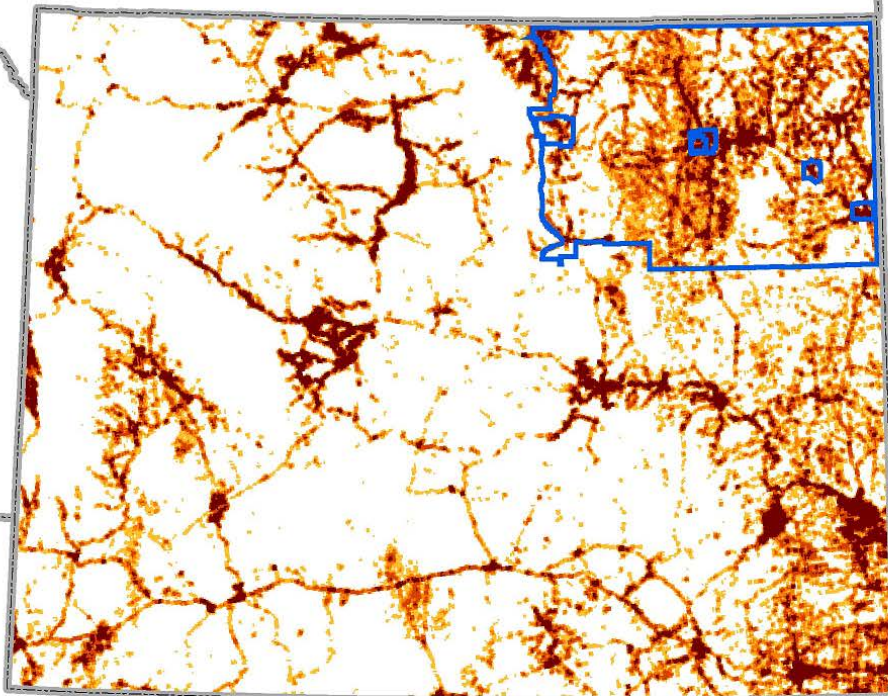


# Predicting Landscape-scale Electrocution Risk for Mitigation and Proactive Planning

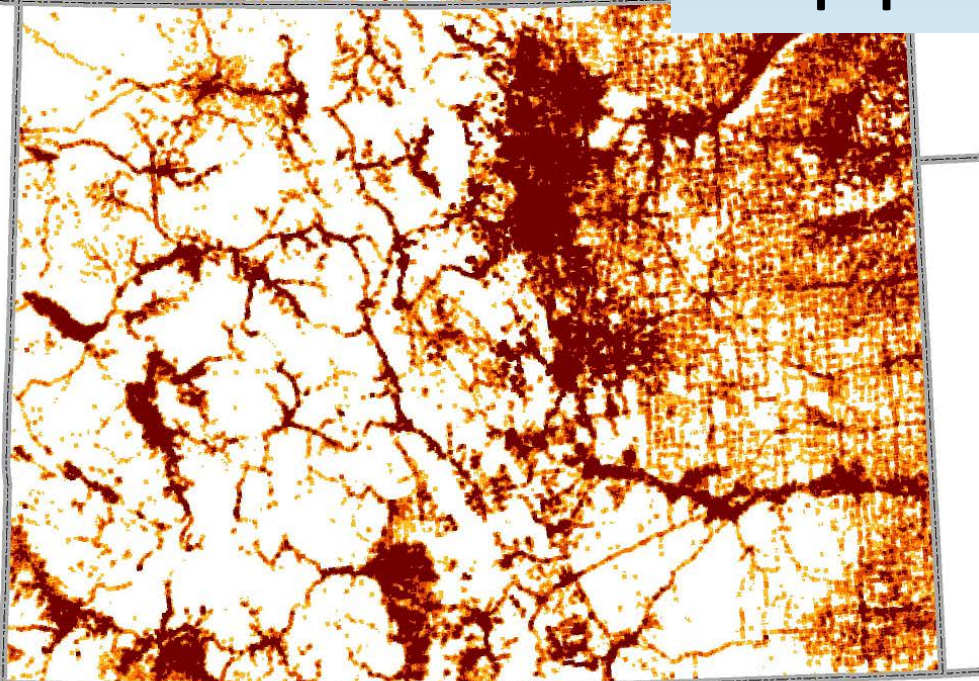
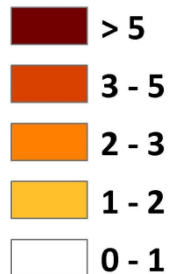


# Predictive Model of Electrocutation Hazard

- Model power pole density as surrogate for electrocutation hazard
- Increased PPD correlated with increased complexity of equipment (= hazard)



poles/km2



**CO/WY Model  
accurately predicts  
pole density**

Partner:  
James Dwyer et al.  
EDM International



# Evaluation of Model Performance

**NW Wyoming**

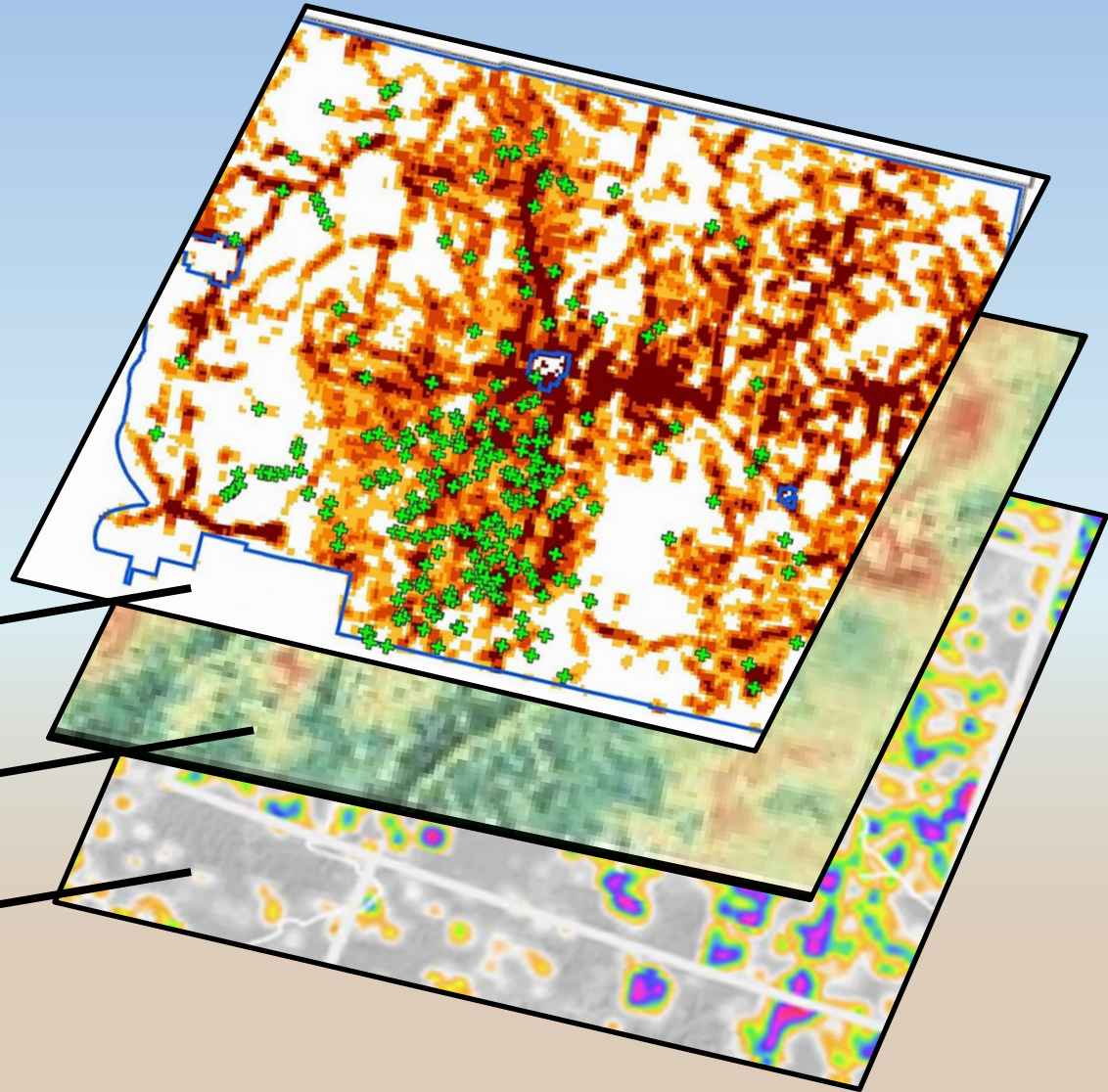
**282 Golden Eagle  
electrocution  
mortalities +**

**Compared with:**

**Hazard model**

**Breeding model**

**Winter model**



**Questions?**

