

Nevada Department of Wildlife Golden Eagle Update



Joe Barnes & Cris Tomlinson
Nevada Department of Wildlife
Wildlife Diversity Division, Las Vegas



Data Sharing

- Statewide nest data available for all raptors
- Sensitive information safeguarded through data-sharing agreement
- Often the first step in NEPA process – generally 10-mile buffer around development footprint
- Reciprocity agreement



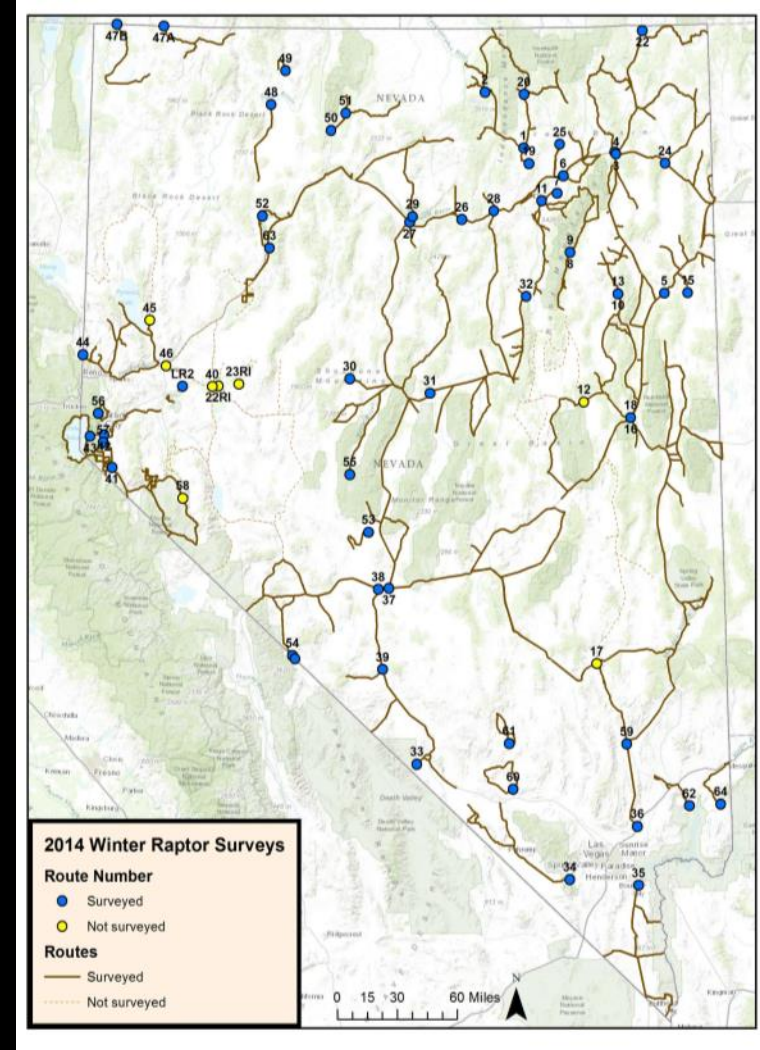
Golden Eagle Nest Data

- Aerial Cliff-nesting Raptor Surveys
- Primary objective is to catalog cliff-nesting raptor nests
- Verifying activity/breeding is secondary objective
- > 3,200 nest records (1972–2015)
- > 700 confirmed active nests (primarily 2010–2015)



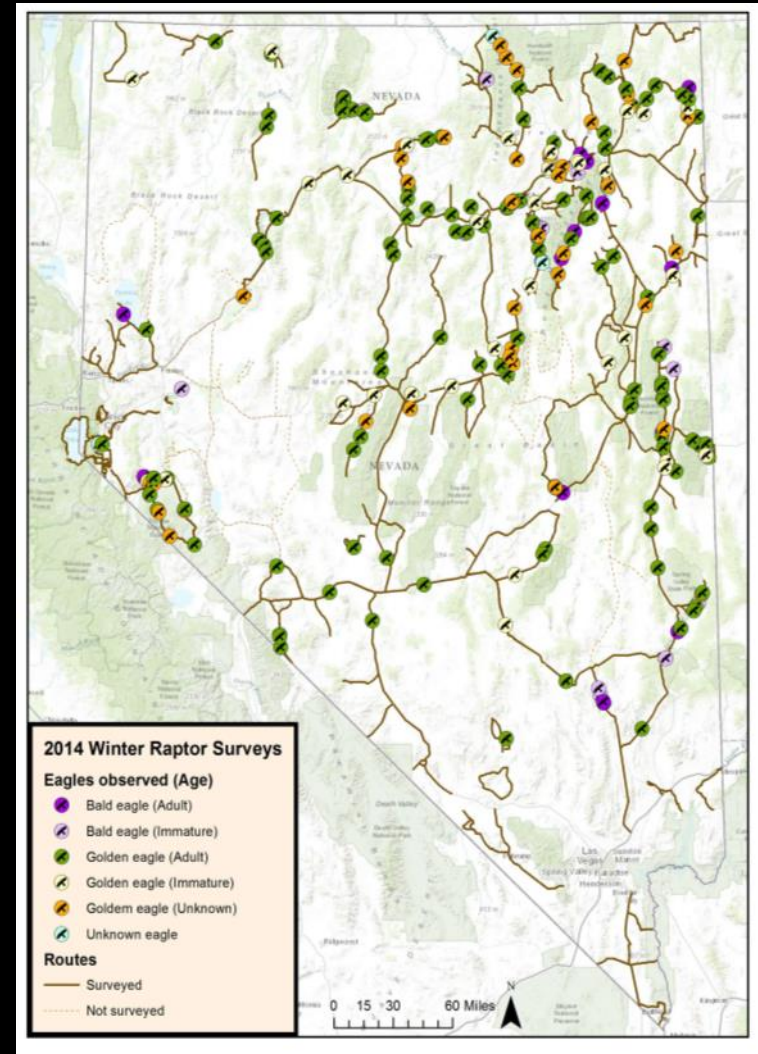
Statewide Winter Raptor Survey

- Contributes to annual National Midwinter Bald Eagle Survey
- Annual surveys began in 2007
- 60 driving routes: 7,265 miles driven in 2014



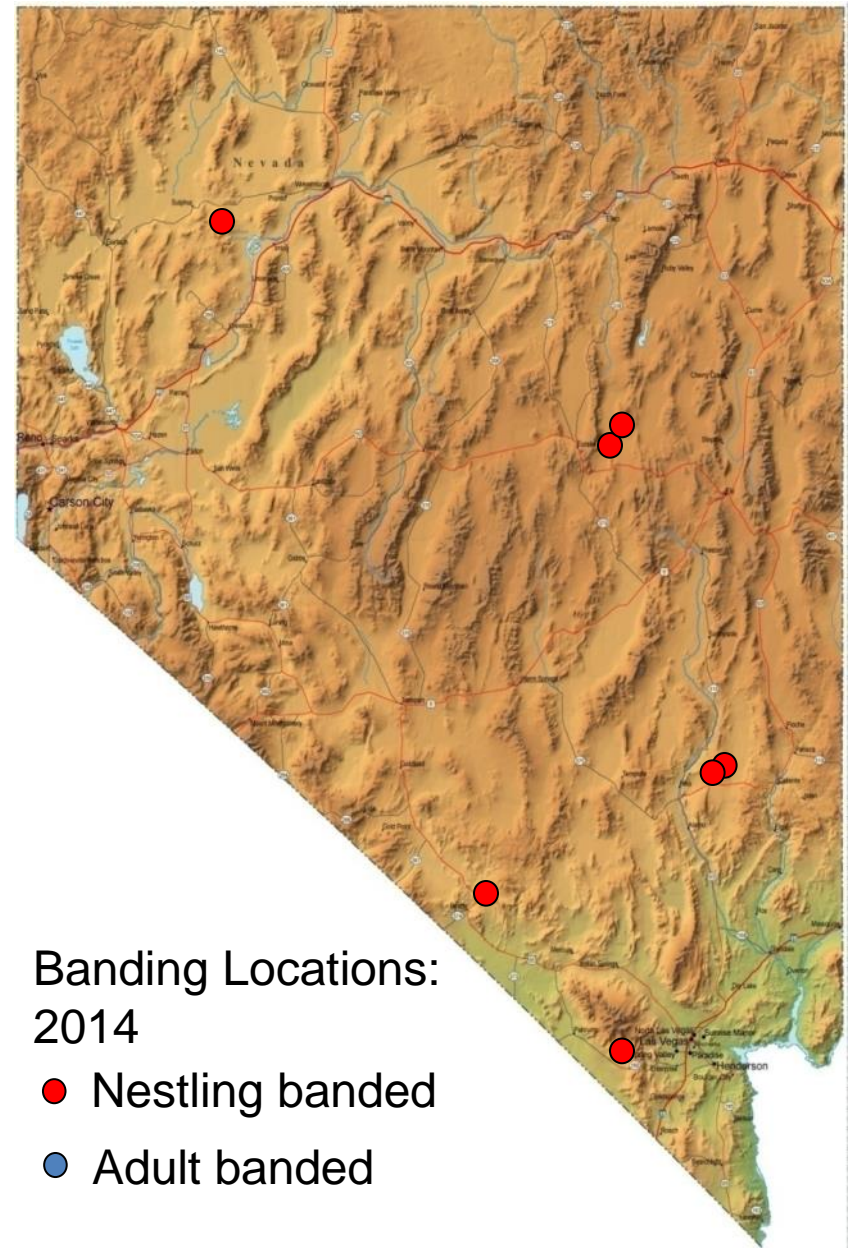
Statewide Winter Raptor Survey

- Contributes to annual National Midwinter Bald Eagle Survey
- Annual surveys began in 2007
- 60 driving routes: 7,265 miles driven in 2014
- Golden eagles are 2nd most commonly documented species ($n = 224$, 15% of 2014 total)



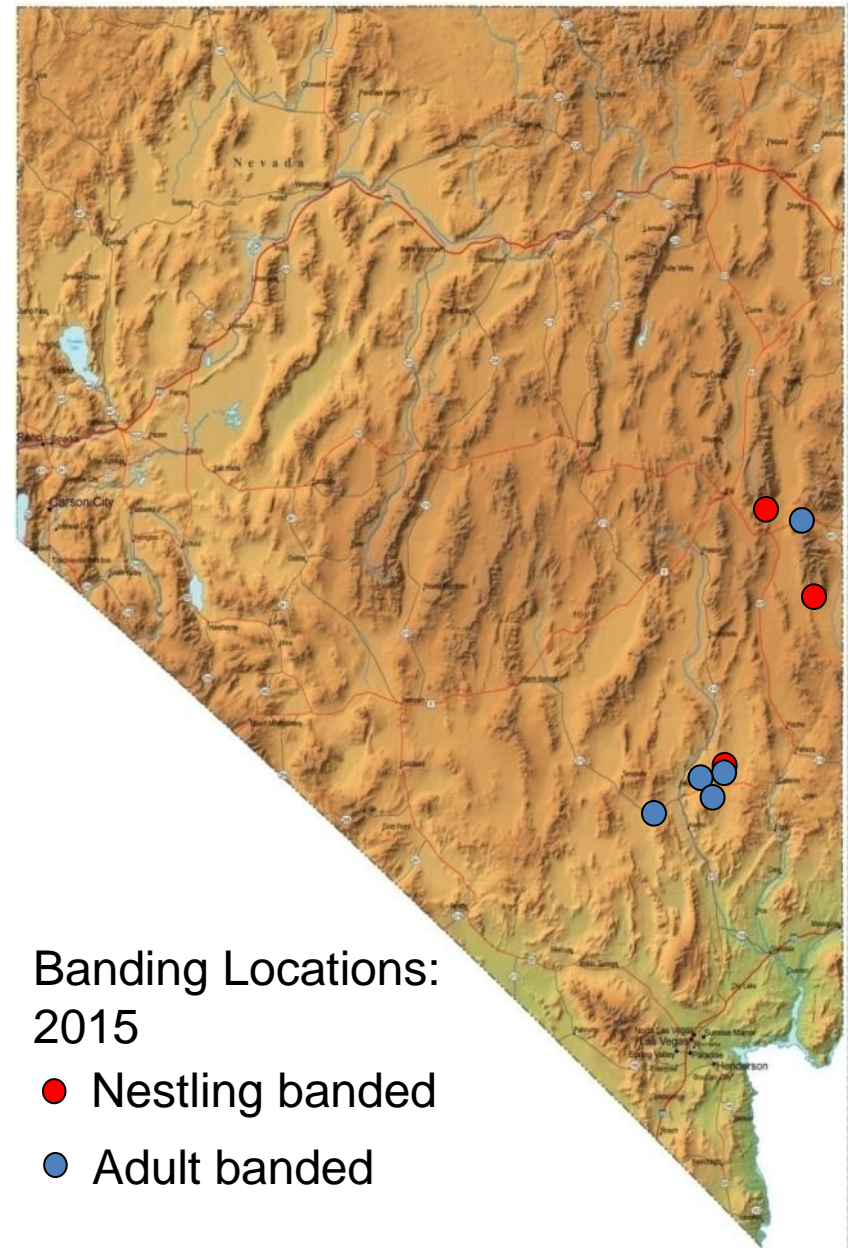
GIS Tracking Efforts

- 2014: Assisted FWS deploy 6 solar PTTs on nestlings
 - 6 solar PTTs deployed by partners



GIS Tracking Efforts

- 2014: Assisted FWS deploy 6 solar PTTs on nestlings
 - 6 solar PTTs deployed by partners
- 2015: Deployed 9 solar PTTs
 - 5 ASY, 4 nestlings
 - 2 study areas
- 2016: Deploy 5 solar PTTs
 - Augmented by nest cameras



Acknowledgments

- Bureau of Land Management: State, Caliente, and Ely offices
- Nevada Mining Association
- American Eagle Research Institute
- Spring Valley Wind Technical Advisory Committee
- Christy Klinger, Mackenzie Jeffress and other NDOW biologists
- Great Basin Bird Observatory
- Ron Mills and Marcus Jones: NV Wildlife Management Areas

