

# Draft Golden Eagle Observations Database

CA-NV Golden Eagle Working Group  
Sacramento, CA  
November 4, 2015



Kate Whitney Keiser

California Department of Fish and Wildlife  
Biogeographic Data Branch

[Kate.Keiser@wildlife.ca.gov](mailto:Kate.Keiser@wildlife.ca.gov)

(916) 445-5006



# Overview

- Introduction
- The Data
- Contributing Data
- Data Access
- Contacts



# Introduction

## History of Development

- Idea
  - CA-NV Golden Eagle Working Group (GEWG)
- Implementation
  - Collaborators
    - GEWG Database Subgroup
    - CDFW Biogeographic Data Branch Staff
    - USFWS Western Golden Eagle Team members
  - Deliverables
    - Observation database template
    - Metadata
    - QA/QC scripts
    - Draft database with data from large datasets, researchers, and reports
  - The Database Team is currently working to finalize a complete dataset.



# The Data

## Current Dataset

Large datasets were compiled by:

California Department of Fish and Wildlife

US Fish and Wildlife Service – Yreka

US Fish and Wildlife Service – Carlsbad

There are a total of **4,231 records** currently in the database with  
**more to come!**



# The Data

## Fields

Date*	Behavior 1	Coordinate Accuracy Within
Record Type*	Behavior 2	Coordinate Source
Survey Type	Nest ID	Site Name
Number Total	Nest Occupancy	Site Directions
Number Adult	Nest Status	Notes
Number Subadult	Nest Condition	Observer Name*
Number Juvenile	Nest Substrate	Observer Phone Number*
Number Fledgling	Nest Tree Species	Observer Email Address*
Number Nestling	Nest Stage	Observer Affiliation
Number Egg	Longitude (DD NAD83)*	
Number Unknown Age	Latitude (DD NAD83)*	* Required Field

Note: field names derived from terminology used in Bloom & Clark 2001, Driscoll 2010, USFWS 2009, Pagel et al. 2010.



# The Data

## Fields – General Information

Date\*  
Record Type\*  
Survey Type  
Number Total  
Number Adult  
Number Subadult  
Number Juvenile  
Number Fledgling  
Number Nestling  
Number Egg  
Number Unknown Age

Behavior 1  
Behavior 2  
Nest  
Nest Count  
Nest Status

Date\*  
Record Type\*  
Survey Type

Coordinate Accuracy Within  
Coordinate Source  
Site Name  
Site Directions  
Notes



*Sky de Light*

# The Data

## Fields – Bird Information

Number Total

Number Adult

Number Subadult

Number Juvenile

Number Fledgling

Number Nestling

Number Egg

Number Unknown Age

Behavior 1

Behavior 2



\* Required Field



# The Data

## Fields – Nest Information

Date\* Behavior 1 Coordinate Accuracy Within  
Record Type Nest ID Behavior 2 Coordinate Source  
Survey Type Nest ID  
Nest Occupancy  
Number Total Nest Occupancy  
Nest Status  
Number Adult Nest Status  
Nest Condition  
Number Juvenile Nest Substrate  
Nest Substrate  
Number Fledgling Nest Tree Species  
Nest Tree Species  
Number Egg Stage  
Nest Stage  
Number Unknown Age  
Longitude (DD N  
Latitude (DD NAD83)\* \* Required Field





# The Data

## Fields – Location Information

**Longitude (DD NAD83)\***

**Latitude (DD NAD83)\***

**Coordinate Accuracy Within**

**Coordinate Source**

**Site Name**

**Site Directions**

**Notes**\*





# The Data

## Fields – Observer Information

**Observer Name\***

**Observer Phone Number\***

**Observer Email Address\***

**Observer Affiliation**

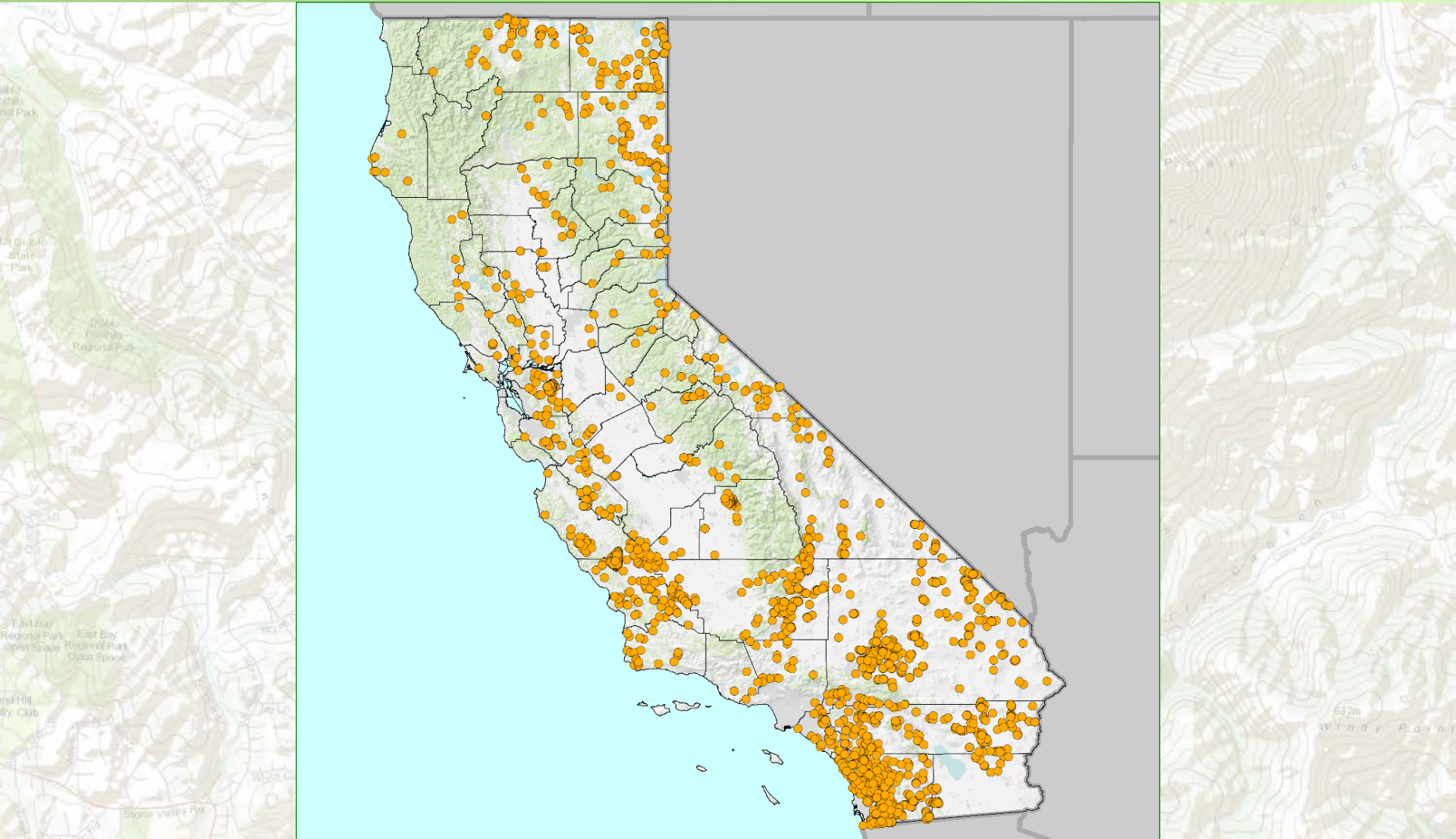


\* Required Field



# The Data

## Current Dataset





# Contributing Data

## Single to Many Detections

GEWG Database Submission template – available now!

<https://www.dfg.ca.gov/wildlife/nongame/raptors/goldeneagle/>

GOEA Working Group database submission v5.xlsx - Excel

Whitney, Kate@Wildlife

B87

**California and Nevada Golden Eagle Working Group (GEWG)**  
<http://www.dfg.ca.gov/wildlife/nongame/GEWG/>

**Golden eagle (GOEA) observation data worksheet**

This workbook contains details regarding the type of data and format that the GEWG would like to see GOEA data reported in.

The CA/NV golden eagle dataset is in draft form, and restricted in use and distribution due to the sensitive information housed within. Data will not be distributed to the public without permission from Carie Battistone and the original contributor.

Intro | Instructions | Field definitions & values | Data | Example data | References

READY 100%



# Contributing Data

## Single to Many Detections

GEWG Database Submission template – available now!

<https://www.dfg.ca.gov/wildlife/nongame/raptors/goldeneagle/>

GOEA Working Group database submission v5.xlsx - Excel

Whitney, Kate@Wildlife

A71

**General Instructions:**

- In addition to these instructions, this Excel workbook contains a worksheet for detailing field definitions & values, data entry, example completed data, and references.
- In order to be effective, the following minimum fields are required: Date, RecordType, Lon\_DD\_N83, Lat\_DD\_N83, Obs\_Name, Obs\_Phone, Obs\_Email (red). Additionally, either NumTotal or Nest\_ID is required (blue). This allows data entry for birds observed without a nest (flying, perched) or a known golden eagle nest without birds (unoccupied).
- The GEWG requests that coordinates be submitted as decimal degrees longitude and latitude with the North American Datum 1983 (NAD83).

Intro **Instructions** Field definitions & values Data Example data References

READY 100%



# Contributing Data

## Single to Many Detections

GEWG Database Submission template – available now!

<https://www.dfg.ca.gov/wildlife/nongame/raptors/goldeneagle/>

GOEA Working Group database submission v5.xlsx - Excel

FILE HOME INSERT PAGE LAYOUT FORMULAS DATA REVIEW VIEW Foxit PDF

Whitney, Kate@Wildlife

CoordSource : GPS

Field attribute	Definition/description
<b>Date</b>	Date of detection; year and month is required at a minimum. Format is YYYYMMDD. Use "XX" for unknown day (YYYYMMXX).
<b>RecordType</b>	General description of what the GOEA record represents. (Nest, Fly-over, Perched).
nest	The record represents a golden eagle nest site
fly-over	The record represents a golden eagle that was primarily observed flying
perched	The record represents a golden eagle that was primarily observed perched
use area	The record represents the centroid of an area known to be used by a golden

Intro Instructions **Field definitions & values** Data Example data References

SELECT destination and press ENTER or choose Paste

COUNT: 4 100%





# Contributing Data

## Single to Many Detections

GEWG Database Submission template – available now!

<https://www.dfg.ca.gov/wildlife/nongame/raptors/goldeneagle/>

GOEA Working Group database submission v5.xlsx - Excel

Whitney, Kate@Wildlife

	A	B	C	D	E	F	G	H	I	J	K	L	M	N	
1	Date	RecordType	SurveyType	NumTotal	NumAdult	NumSubAdult	NumJuv	NumFledgli	NumNestIng	NumEgg	NumUnkAge	Behavior1	Behavior2	Nest_ID	Nest
2															
3															
4															
5															
6															
7															
8															
9															
10															
11															
12															
13															
14															

READY







# Contributing Data

## Single to Many Detections

GEWG Database Submission template – available now!

<https://www.dfg.ca.gov/wildlife/nongame/raptors/goldeneagle/>

The screenshot shows an Excel spreadsheet titled "GOEA Working Group database submission v5.xlsx - Excel". The spreadsheet is open to the "References" tab, which is highlighted in green. The "References" section contains the following text:

1 **References**

2

3 Bloom, P. H. and W. S. Clark. 2001. Molt and sequence of plumages of Golden Eagles and a technique

4 for in-hand ageing. N. Am. Bird Bander 26:97-116.

5 <http://www.globalraptors.org/grin/researchers/uploads/155/bloomclarkageingges.pdf>

6 Driscoll, D.E. 2010. Protocol for golden eagle occupancy, reproduction, and prey population

7 assessment. American Eagle Research Institute, Apache Jct., AZ. 55pp.

8 <http://www.dfg.ca.gov/wildlife/nongame/GEWG/docs/ProtocolGoldenEagleOccupancy.pdf>

9 Pagel, J.E., D.M. Whittington, and G.T. Allen. 2010. Interim Golden Eagle inventory and monitoring

10 protocols; and other recommendations. Division of Migratory Bird Management, U.S. Fish and

11 Wildlife Service.

The spreadsheet also shows a navigation bar at the bottom with tabs for "Intro", "Instructions", "Field definitions & values", "Data", "Example data", and "References". A red arrow points to the "References" tab. The status bar at the bottom indicates "READY" and "100%".

# Contributing Data

## Single to Many Detections



The screenshot shows a web browser window displaying the California Department of Fish and Wildlife website. The browser's address bar shows the URL <https://www.dfg.ca.gov/wildlife/nongame/ra/>. The page title is "Golden Eagles in California". The website header includes the "CA.GOV" logo and the text "CALIFORNIA DEPARTMENT OF FISH and WILDLIFE". A navigation menu contains links for Home, Fishing, Hunting, Licenses & Permits, Conservation, Learning, and Explore. The main content area is titled "Golden Eagles in California" and includes sections for "Distribution and Abundance", "Biology", "Threats", and "Population Status and Trend". There are two photographs of Golden Eagles: one standing on the ground and one perched on a tree branch. The left sidebar contains a "Nongame Wildlife" menu with links to Habitats, General Plant & Animal Information, Plant and Animal Pictures, Scientific Collecting Permits, Publications, and Contact Information. Below this is the "CDFW Nongame Program" contact information: 1812 9th Street, Sacramento, CA 95811, (916) 445-0411. At the bottom of the sidebar is the "CalTIP" logo and "Related CDFW Links" including Scientific Collecting Permits, Game Management, Wildlife Investigations Lab, California Endangered Species Act, Landscape Conservation Planning, and Environmental Review. The browser window also shows a search bar and a "Select Language" dropdown menu.

File Edit View History Bookmarks Tools Help

California Department of Fi... BIOS viewer 5.34.19 Golden Eagles in California...

Go to: [Mobile Content](#) | [Content](#) | [Footer](#) | [Accessibility](#) Select Language

Search

Home Fishing Hunting Licenses & Permits Conservation Learning Explore

Nongame Wildlife

- Habitats
- General Plant & Animal Information
- Plant and Animal Pictures
- Scientific Collecting Permits
- Publications
- Contact Information

CDFW Nongame Program

1812 9th Street  
Sacramento, CA 95811  
(916) 445-0411

Contact the Nongame Program

KEEP ME WILD

CalTIP

Related CDFW Links

- Scientific Collecting Permits
- Game Management
- Wildlife Investigations Lab
- California Endangered Species Act
- Landscape Conservation Planning
- Environmental Review

### Golden Eagles in California

The golden eagle (*Aquila chrysaetos*) is listed as a fully protected species in California.

#### Distribution and Abundance

Golden eagles are found throughout North America, but are more common in western North America. Little is known about the eagle abundance, but it is thought that numbers may be declining in some, if not all, parts of their range. Golden eagle abundance in California is unknown.



Golden Eagle. USFWS Photo.

#### Biology

Most golden eagles in California are resident (e.g. they stay in the state yearlong), but some migrate into California for the winter. Those that stay yearlong may move downslope for the winter, or upslope after breeding season. Golden eagles inhabit a variety of habitats including forests, canyons, shrub lands, grasslands, and oak woodlands

The golden eagle breeds from late January through August and produces 1-3 eggs. Nests are constructed on platforms on steep cliffs or in large trees. The main prey species for the golden eagle are rabbits, hares and rodents; but eagles will also take other mammals, birds, and reptiles. Carrion (e.g. carcasses found on the landscape) is also a part of the eagle diet, especially during winter months.

#### Threats

Threats to this large bird of prey are varied, and include loss of foraging areas, loss of nesting habitat, pesticide poisoning, lead poisoning and collision with man-made structures such as wind turbines.

#### Population Status and Trend

Little is known about the population trend for golden eagles. The [Breeding Bird Survey](#) (BBS) has long-term dataset that can be used to assess general population trends. However, no strong trend exists for the golden eagle in California.

#### Submission of Golden Eagle Data

The CDFW and USFWS staff led an effort to develop the CA/NV Golden Eagle Database. You can submit data to the Golden Eagle Database by filling in the [CNDDB Golden Eagle Database Submission Template](#) and sending directly to [Kate Keiser](#). In addition to a blank spreadsheet to submit data, this template also provides detailed instructions, field definitions and values, sample data, and references. For general inquires related to the database you may contact [Carie Battistone](#).



Golden Eagle. USFWS Photo.

You may also submit golden eagle data using the [CNDDB Online Field Survey Form](#). This form is an internet application that allows users to map an observation of a core species, including but not limited to golden eagles, and submit the location and



# Contributing Data

## Single to Few Detections

CNDDDB (California Natural Diversity Database)

Online Field Survey Form – **available now!**

[http://www.dfg.ca.gov/biogeodata/cnddb/submitting\\_data\\_to\\_cnddb.asp](http://www.dfg.ca.gov/biogeodata/cnddb/submitting_data_to_cnddb.asp)

Species Selection | Observer | Observation | Map/Location | Plant Info | Animal Info | Habitat/Site | Attachments | Previous Submissions | Help

California Natural Diversity Database (CNDDDB) - Online Field Survey Form

**CNDDDB Online Field Survey Form Instructions**

- The California Natural Diversity Database (CNDDDB) is a positive detection database. The CNDDDB values data submissions for both new occurrences as well as updates to existing occurrences.
- Please begin your data submission below by selecting a CNDDDB-tracked species.
- See the CNDDDB's **Special Plants** and **Special Animals** lists for information on species that we track.
- After entering a species, navigate the form by clicking on the tabs.
- Asterisks indicate required fields, and asterisks on tab labels indicate that there are incomplete required fields on that tab.
- Because this is an Internet application, do not use your browser's navigation, like the Back button or the page refresh. If you leave the form before submitting your data (navigate to another website, close your browser, etc.), you may lose the form data.

Species name\*

Species found?  Yes  No If reporting the detection of animal sign (e.g. scat, tracks, songs, etc.), please select "Yes" for "Species found?" and describe your evidence of detection in the form.

# Data Access

- The Draft Golden Eagle dataset is available in the BIOS Viewer for **CNDDDB Government Subscribers**.
- For non-government entities, **requests for data must be made to Carie Battistone**. Release of the data will be assessed based on the purpose of the request and data sensitivity considerations.
- A buffered version of the final dataset may be made available for public viewing in the future.



# Contacts

For general GOEA inquiries  
(including data requests):

Carie Battistone  
Statewide Raptor Coordinator  
CDFW Wildlife Branch  
(916) 445-3615

[Carie.Battistone@wildlife.ca.gov](mailto:Carie.Battistone@wildlife.ca.gov)

For general CNDDDB inquiries:

Patrick McIntyre  
Lead Scientist-California Natural  
Diversity Database  
CDFW Biogeographic Data Branch  
(916) 323-8970

[Patrick.McIntyre@wildlife.ca.gov](mailto:Patrick.McIntyre@wildlife.ca.gov)

To submit completed electronic  
data files:

Kate Keiser  
Database Manager  
CDFW Biogeographic Data Branch  
(916) 445-5006

[Kate.Keiser@wildlife.ca.gov](mailto:Kate.Keiser@wildlife.ca.gov)



# Acknowledgements

## Development and Data Entry

### USFWS

- Brian Woodbridge
- Dave LaPlante (NRG)
- Tony McKinney
- Randy Nagel
- Gjon Hazard
- Tom Dietsch

### NDOW

- Cris Tomlinson
- Chet VanDellen

### CDFW

- Carie Battistone
- Steve Schoenig
- Patrick McIntyre
- Brian Accord
- Joel Boros



# Acknowledgements

## Contributors

And special thanks to all of our contributors, past and present, including:

Bureau of Land Management

Contra Costa Water District

National Park Service

Nevada Department of Wildlife

USDA Forest Service

US Geological Survey

Peter Bloom

Jim Estep

Kim Guillian

Brian Latta

Colleen Lenihan

Michael Moore

Eda Pace

Martin Piorkowski

Mary Shea

John Siperek

Carl Thelander

Brian Woodbridge



# Draft Golden Eagle Observations Database

## The End



Photo credits:  
USFWS/Dave Menke  
USFWS/Donna Dewhurst  
USFWS/WGET



Kate Whitney Keiser  
California Department of Fish and Wildlife  
Biogeographic Data Branch  
[Kate.Keiser@wildlife.ca.gov](mailto:Kate.Keiser@wildlife.ca.gov)  
(916) 445-5006