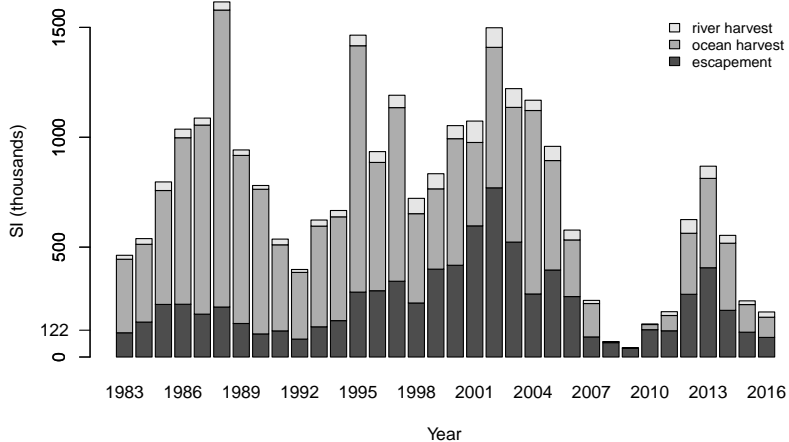
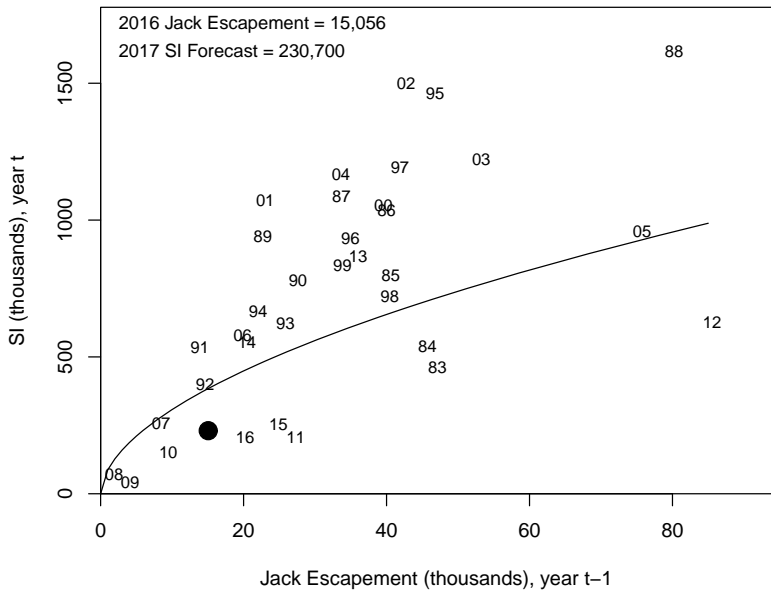


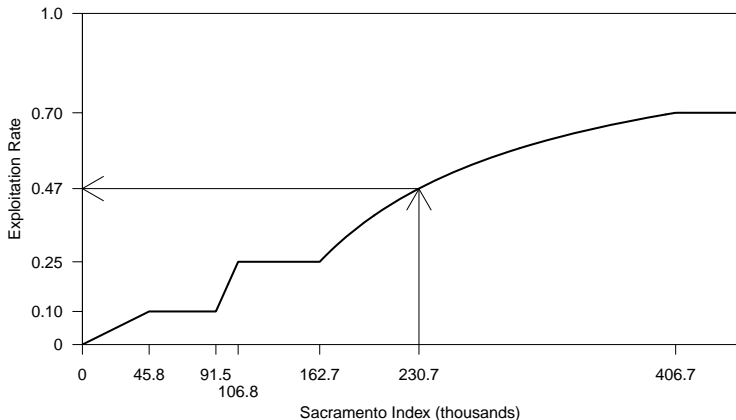
# 2016 Sacramento Index (SI): 205,023



# 2017 SI forecast: 230,700

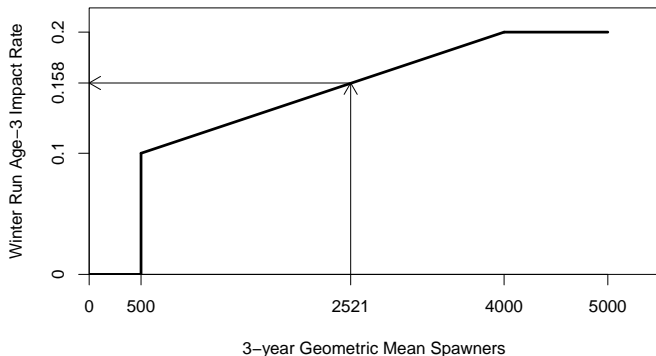


## 2017 management



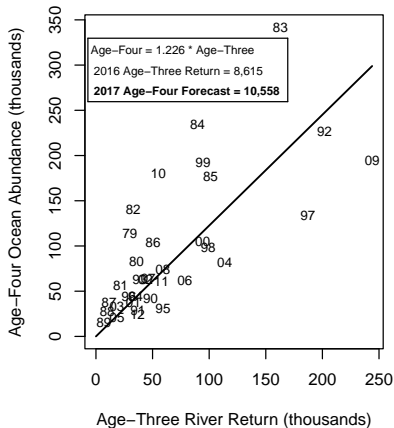
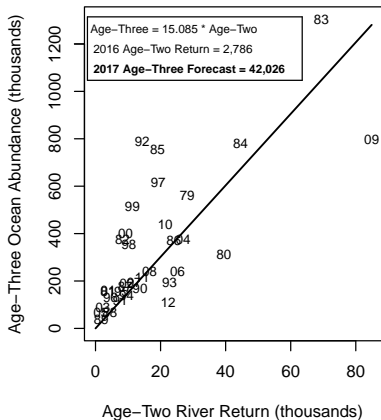
- ▶ Abundance forecast reduced from 2016
- ▶ Must target an escapement of at least 122,000 (47% exploitation rate)
- ▶ 2016 regs: preliminary escapement prediction of 116,400
- ▶ Unlikely to constrain 2017 fisheries

## 2017 winter Chinook management



- ▶ Geometric mean: 2521
- ▶ Maximum allowable age-3 impact rate: 15.8%
- ▶ 2016 regs: preliminary prediction of 11.6%
- ▶ Council took precautionary approach in 2016
- ▶ Likely to constrain 2017 fisheries south of Point Arena

# 2017 Klamath abundance forecast

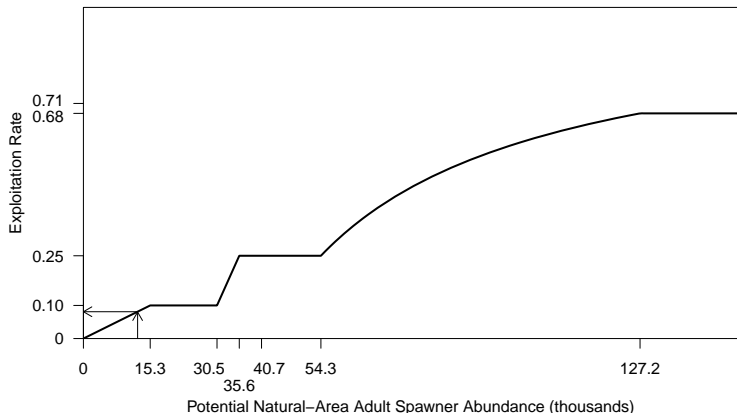


age-3: 42,026

age-4: 10,558

age-5: 1,662

## 2017 management



- ▶ Potential spawner abundance forecast: 12,383
- ▶ Must target an escapement of at least 11,379 (8.1% exploitation rate)

## 2017 management, contd.

- ▶ 2016 regs:
  - ▶ Tribal allocation: 50% of total harvest
  - ▶ River recreational allocation: 15% of non-tribal harvest
  - ▶ Natural-area adult spawners prediction: 9,397
  - ▶ Exploitation Rate: 24.1%
  
- ▶ Will heavily constrain 2017 fisheries south of Cape Falcon, OR

## 2017 California Coastal Chinook

- ▶ Max allowable KRFC age-4 ocean harvest rate of 16%
- ▶ 2016 fisheries: preliminary prediction of 9%
- ▶ Unlikely to constrain 2017 fisheries