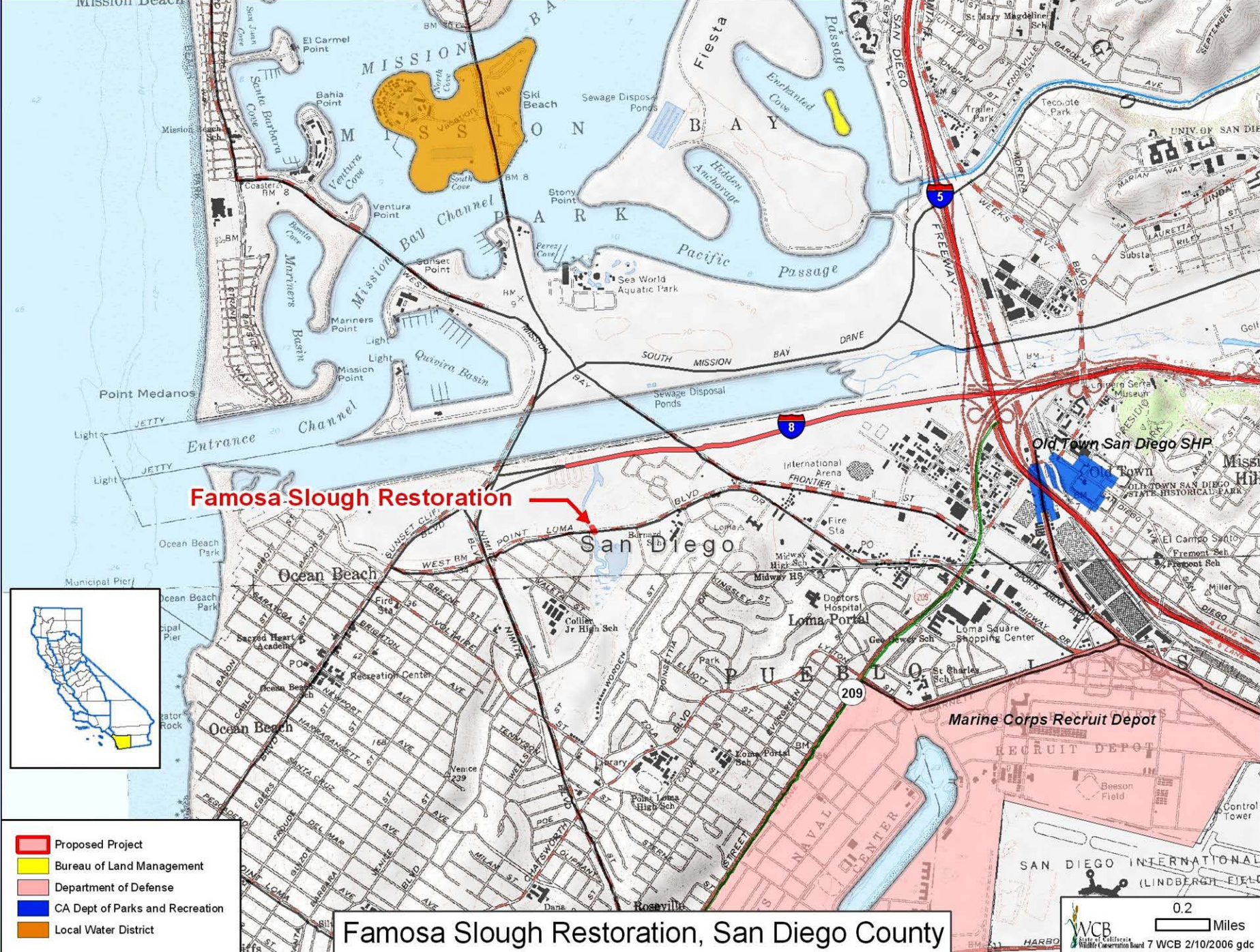


Oak tree at Six Rivers



February 23, 2006 WCB Board Meeting
Legislative Office Building, Room 100
Sacramento, California 95814



Aerial view of Famosa Slough

The blocked culvert and the functioning culvert crossing beneath West Point Loma Boulevard (orange dotted line).



7 Famosa Slough Restoration, San Diego County



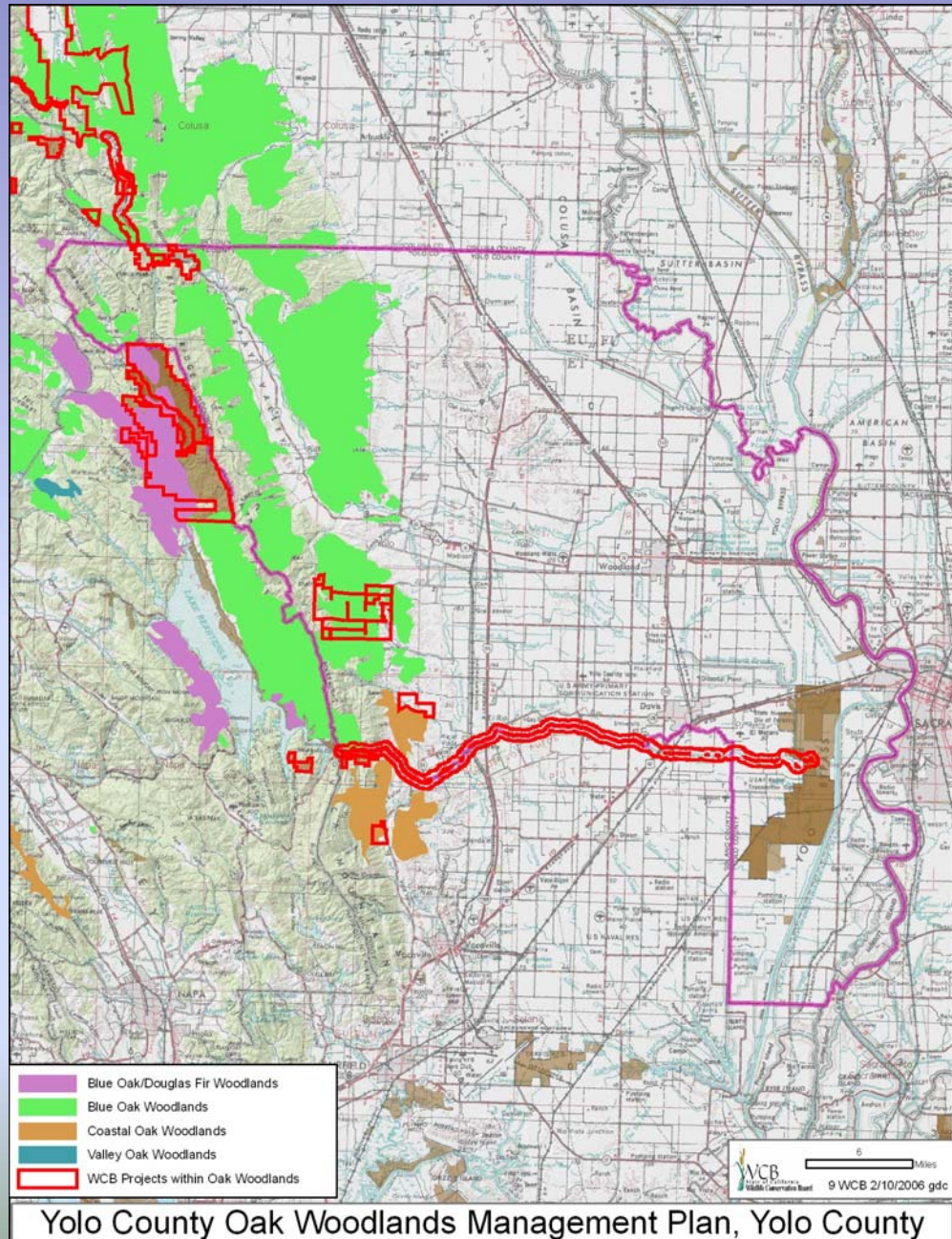
Looking south along the tidal channel that is fed by the functioning culvert. The culverts are about 10 feet below camera level. The main basin of Famosa Slough is in the background and to the left.

7 Famosa Slough Restoration, San Diego County

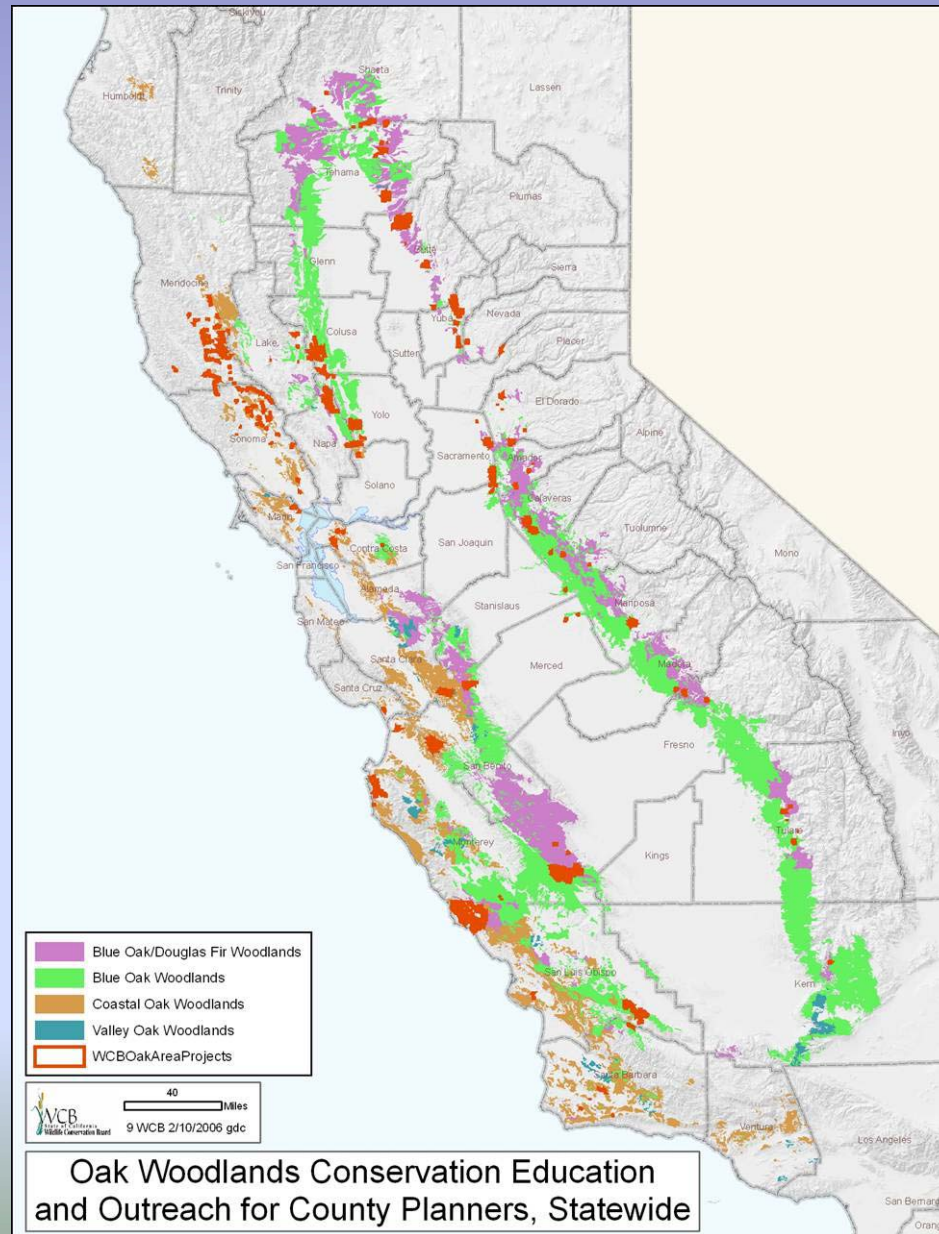


Side view of the north end of the functioning culvert (looking east). The extended culvert will be a few inches away from and parallel to the functioning one, on the side closer to the camera.

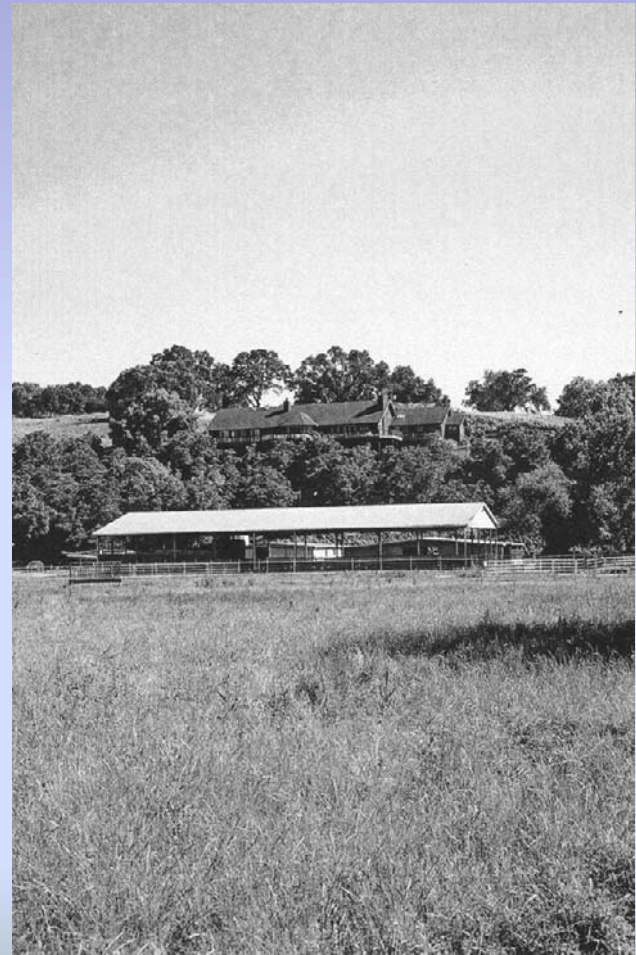
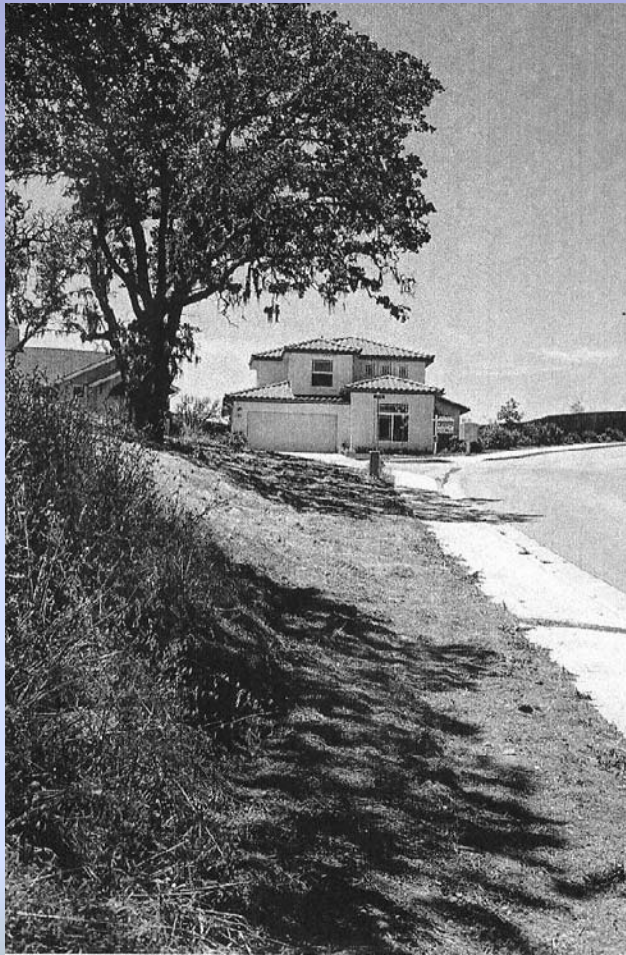
8 Yolo County Oak Woodlands Management Plan, Yolo County



9 Oak Woodlands Conservation Education and Outreach for County Planners, Statewide



9 Oak Woodlands Conservation Education and Outreach for County Planners, Statewide



9 Oak Woodlands Conservation Education and Outreach for County Planners, Statewide

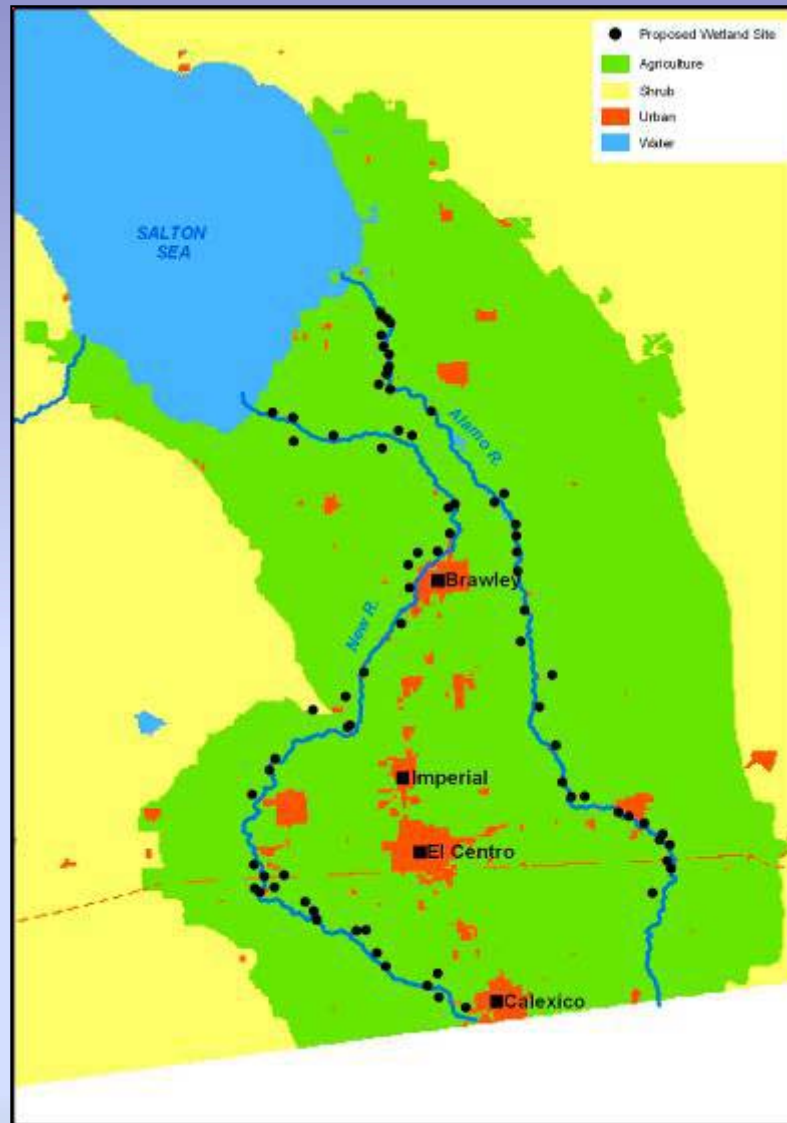


9 Oak Woodlands Conservation Education and Outreach for County Planners, Statewide





10 New and Alamo Rivers Wetland Master Plan, Phase I Augmentation, Imperial County



Total build-out 4,300 acres

Potential Wetland Locations based on Nolte, 2002

10 New and Alamo Rivers Wetland Master Plan, Phase I Augmentation, Imperial County



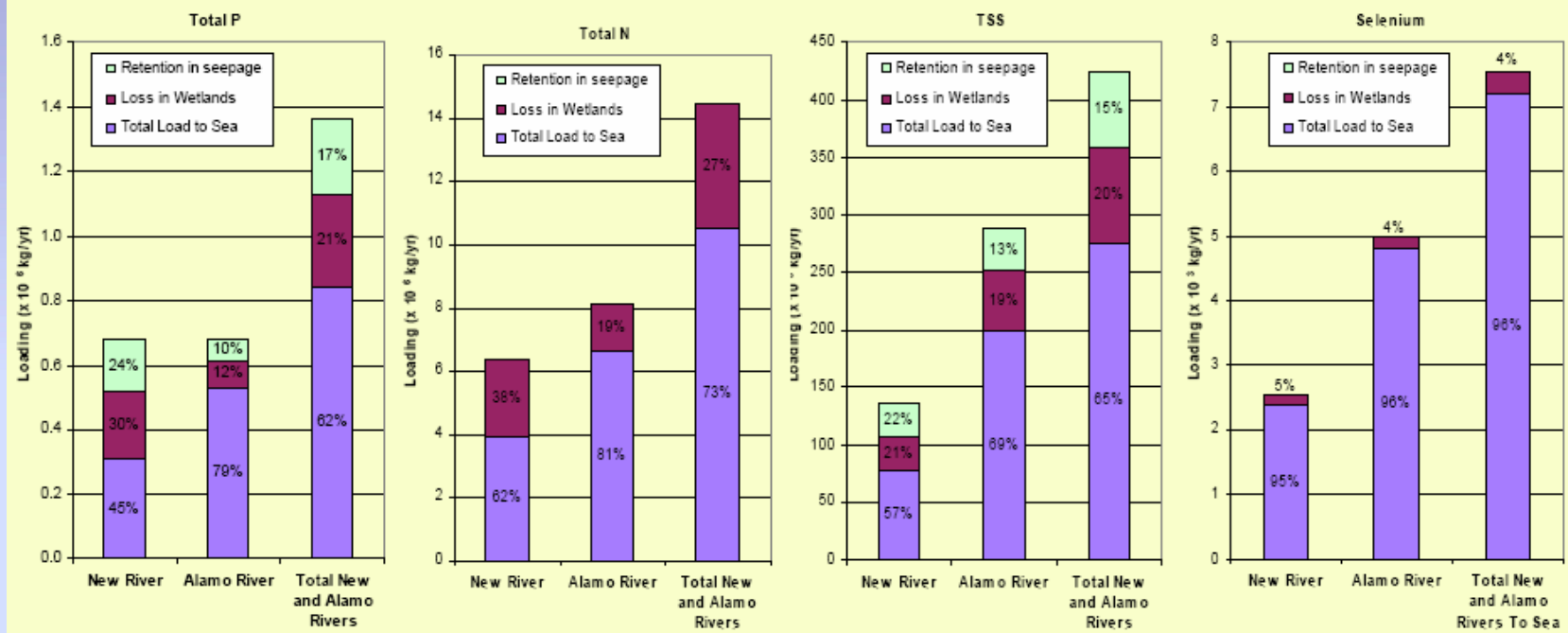
Brawley Wetland: 9 acres total, 6 wet acres, 9 day retention, 1 cfs

10 New and Alamo Rivers Wetland Master Plan, Phase I Augmentation, Imperial County



Imperial Wetland: 43 acres total, 22.7 wet acres, 18 day retention, 4 cfs

Summary of Load Removals with Wetlands



Selenium calculations based on low removal rate from Brawley

Sampling in the Imperial Wetland



Samples Collected



Mosquitofish and Bluegill fry



Sailfin molly



Crayfish



Juvenile Bluegill



Cat tails



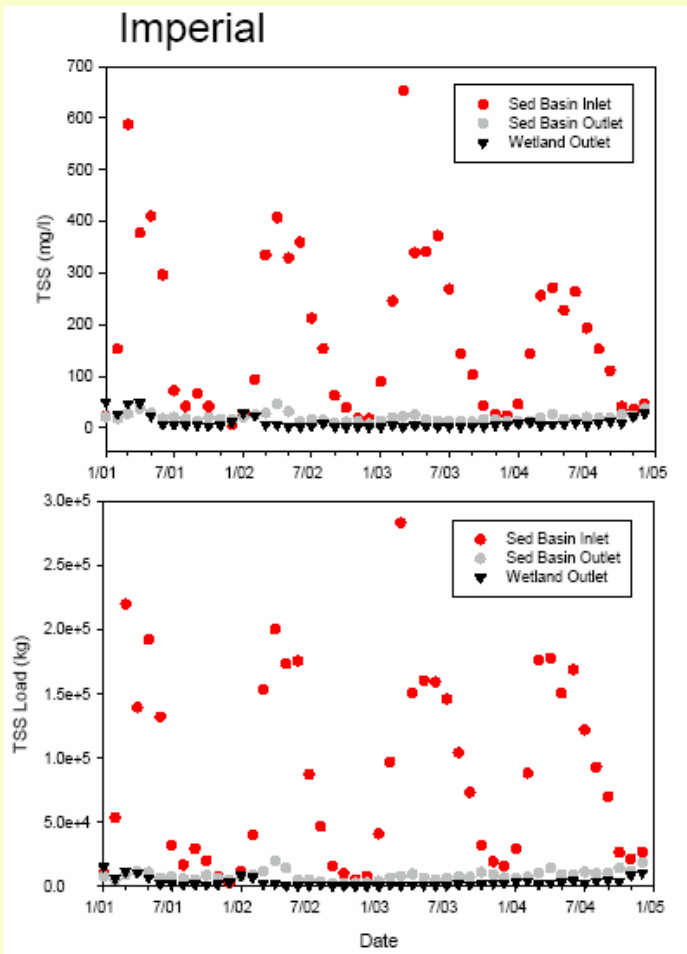
Water

10 New and Alamo Rivers Wetland Master Plan, Phase I Augmentation, Imperial County

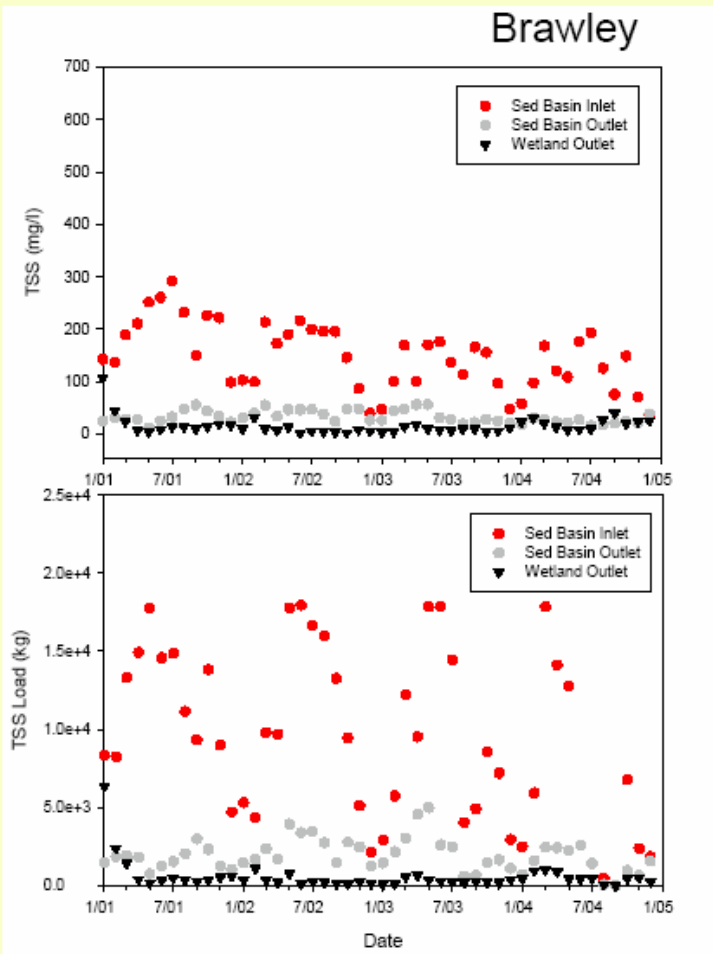


Sampling in New River

TSS in Wetlands

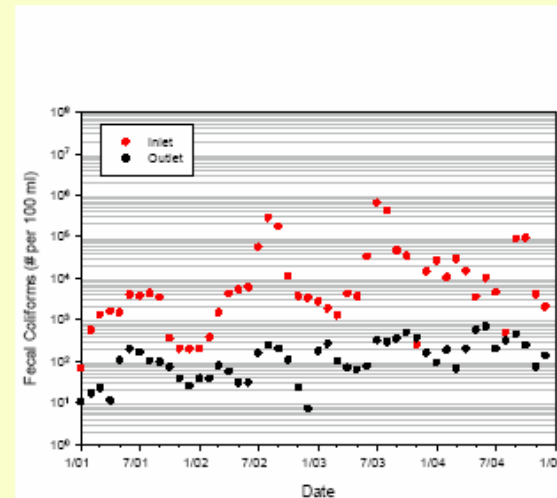
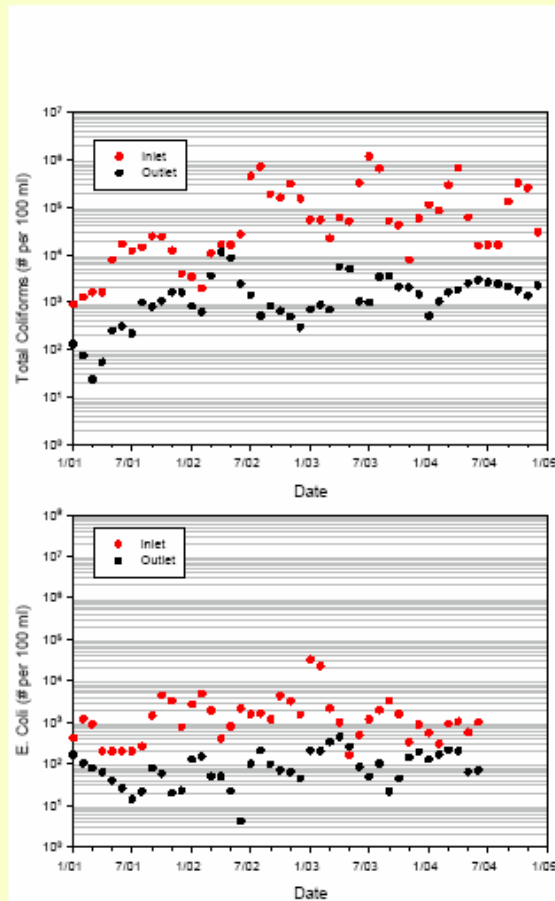


$k = 65.1 \text{ m/yr}$



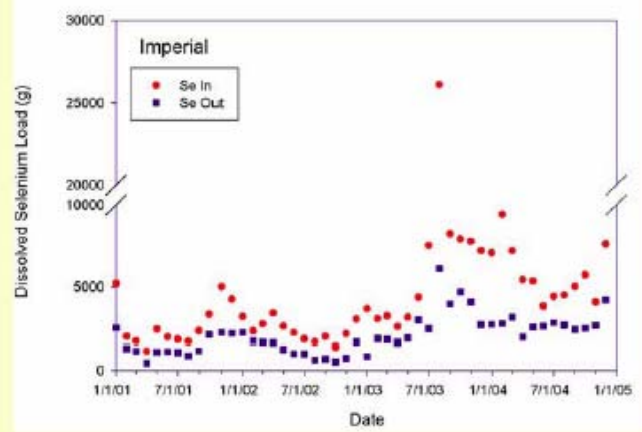
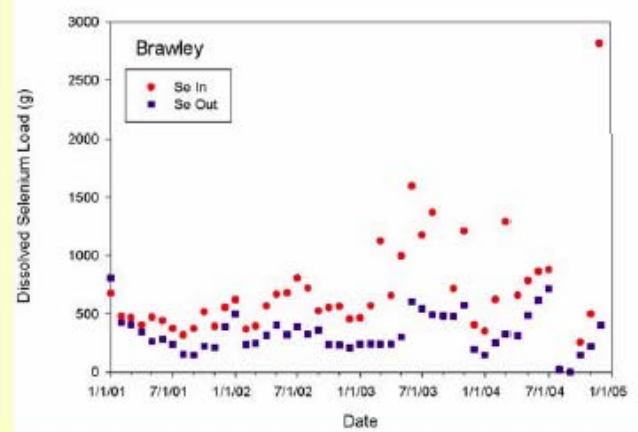
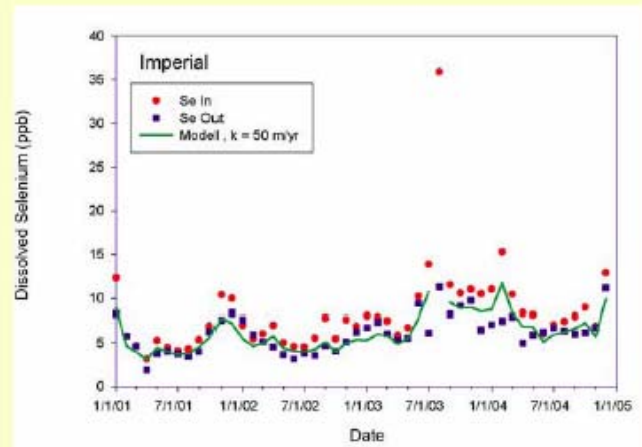
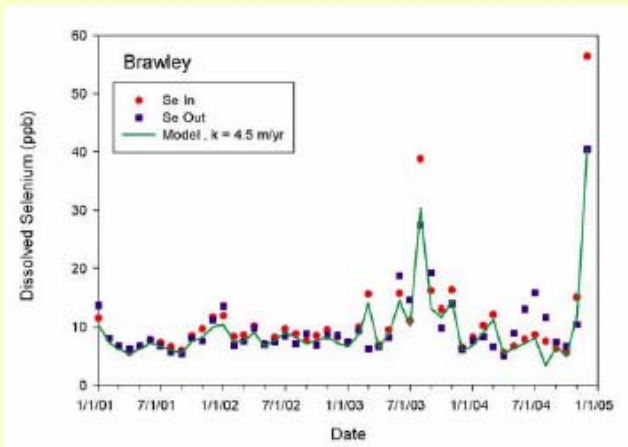
$k = 40.5 \text{ m/yr}$

Imperial: Coliforms and E. Coli

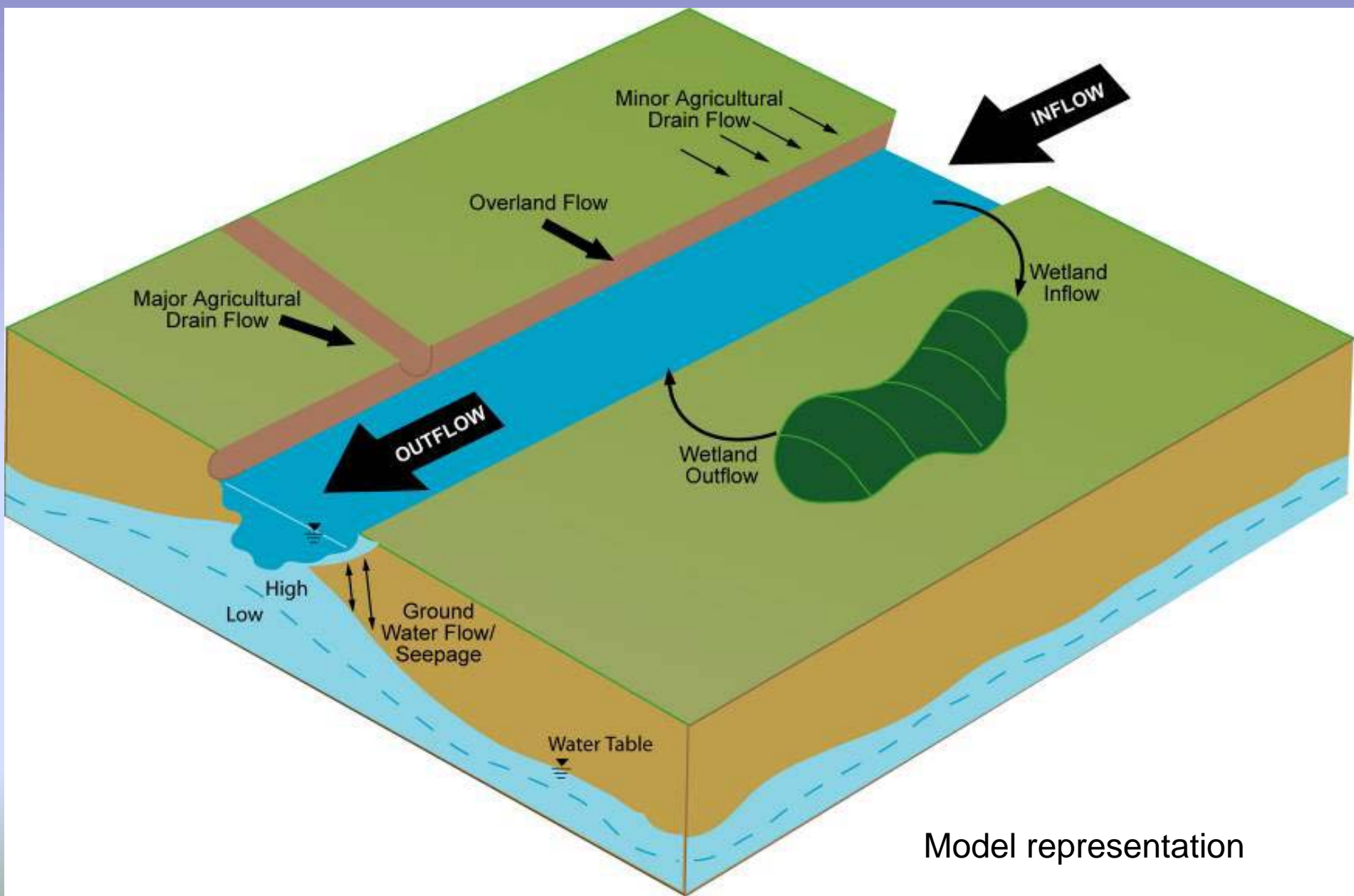


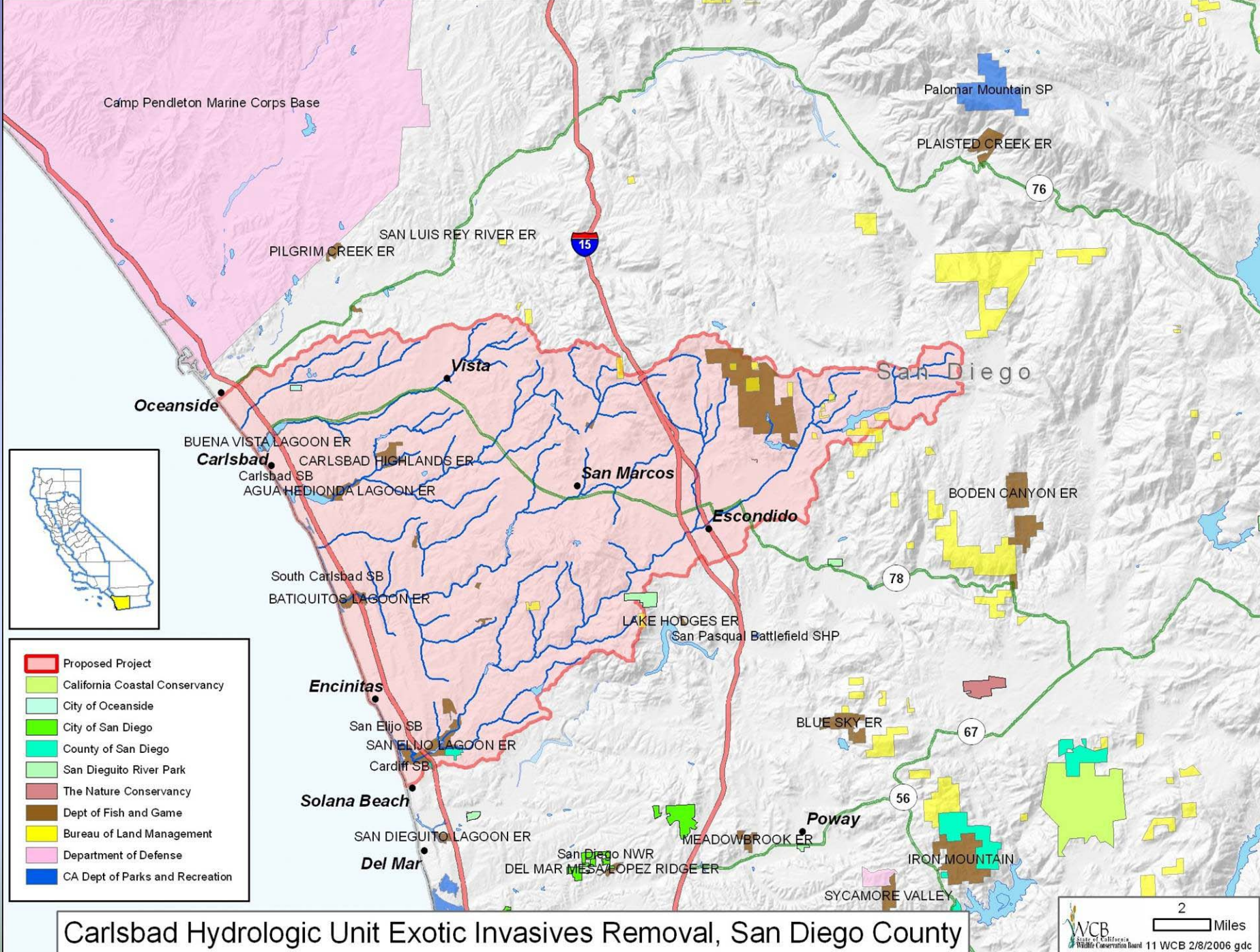
Species	k (m/yr)
Total Coliforms	263
Fecal Coliforms	263
E. Coli	195

Selenium Removal in Wetlands



10 New and Alamo Rivers Wetland Master Plan, Phase I Augmentation, Imperial County





Carlsbad Hydrologic Unit Exotic Invasives Removal, San Diego County

11 Carlsbad Hydrologic Unit Exotic Invasives Removal, San Diego County

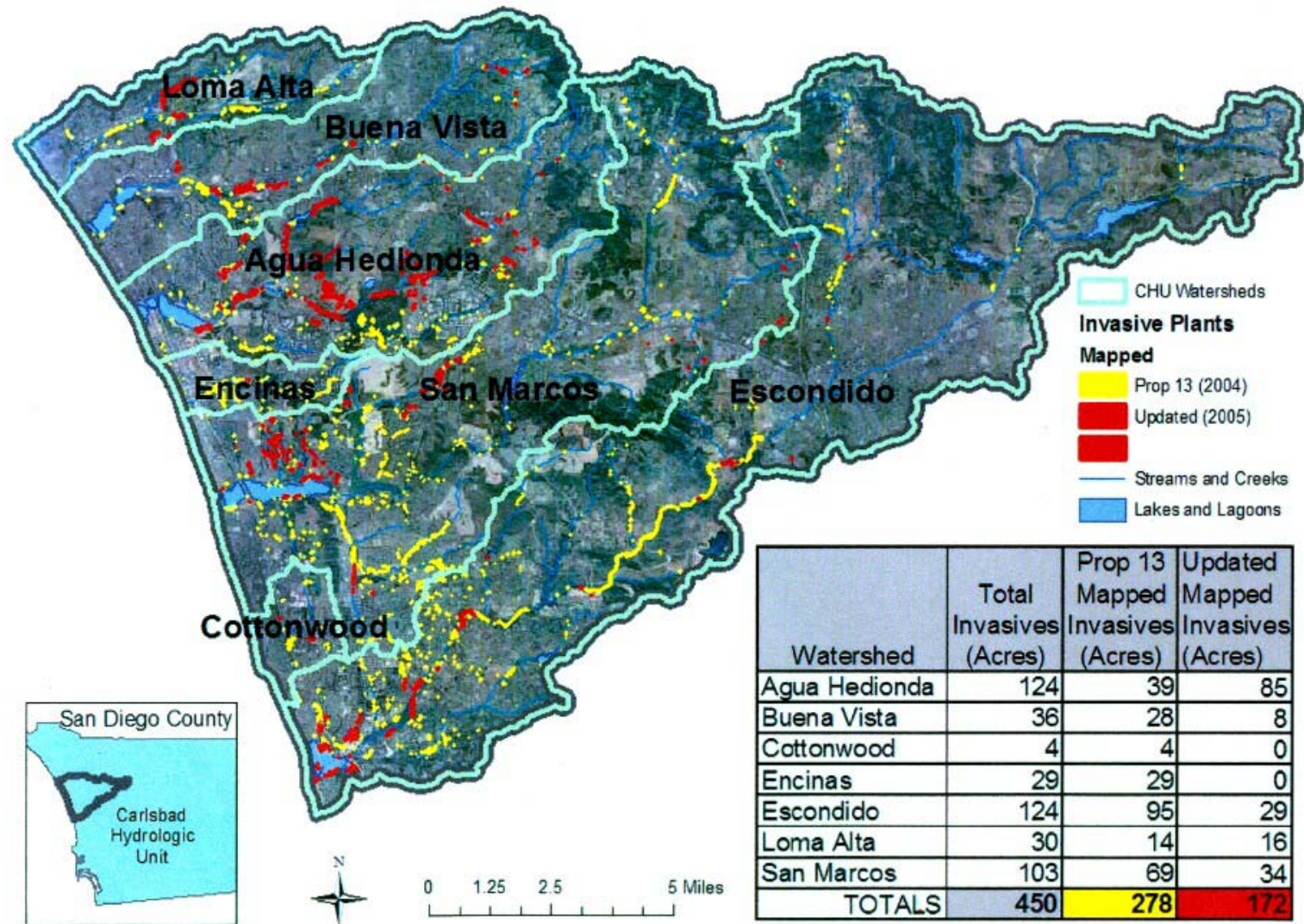


EXHIBIT C

Figure 1. Carlsbad Hydrologic Unit Invasive Species Program

11 Carlsbad Hydrologic Unit Exotic Invasives Removal, San Diego County



Aerial view of Escondido Creek

11 Carlsbad Hydrologic Unit Exotic Invasives Removal, San Diego County



Treating Arundo at San Elijo Lagoon

11 Carlsbad Hydrologic Unit Exotic Invasives Removal, San Diego County



11 Carlsbad Hydrologic Unit Exotic Invasives Removal, San Diego County



After

11 Carlsbad Hydrologic Unit Exotic Invasives Removal, San Diego County



Willows re-sprouting after Arundo removal at San Elijo Lagoon

11 Carlsbad Hydrologic Unit Exotic Invasives Removal, San Diego County

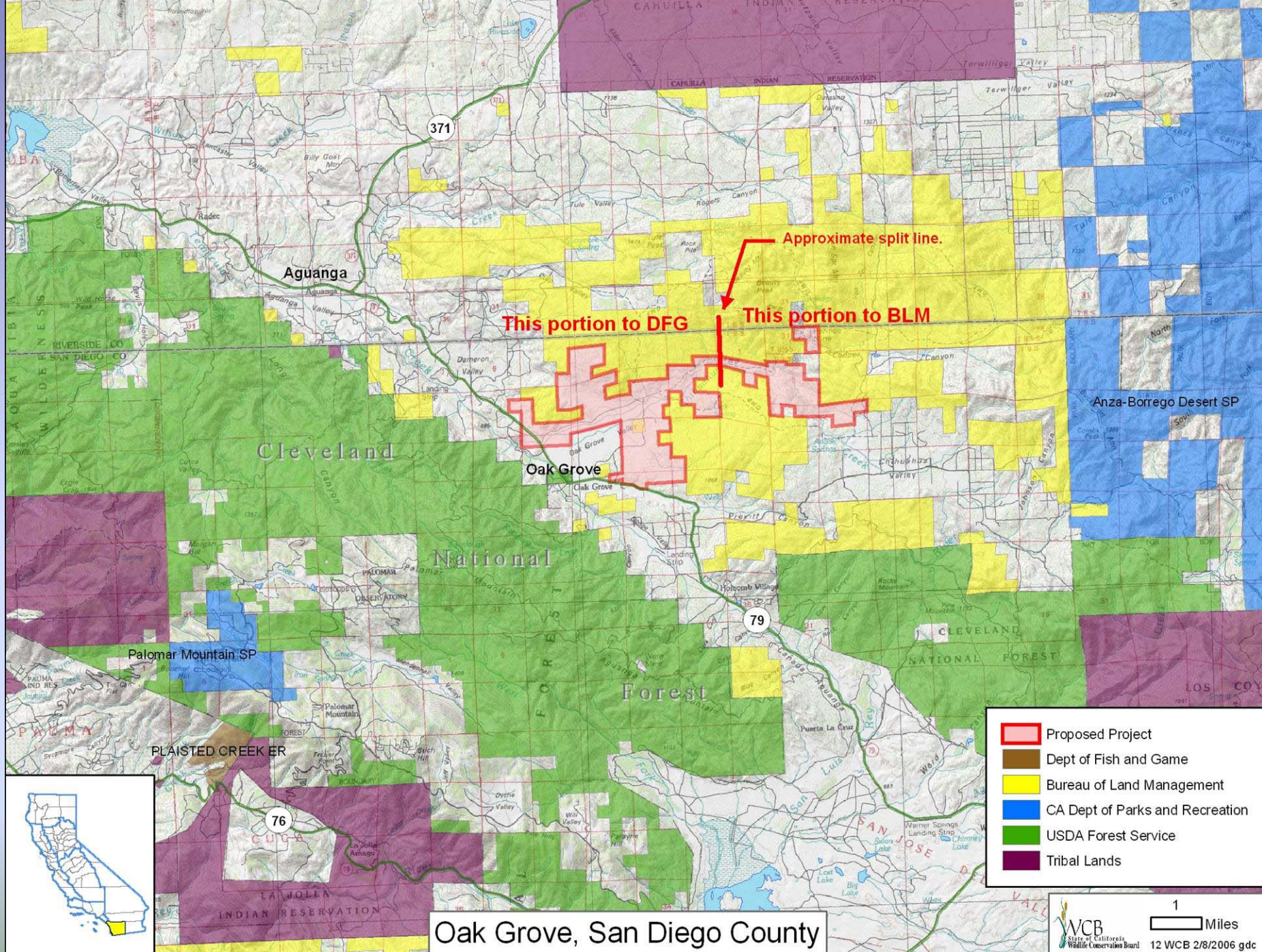
Pampas grass removal Encinas Creek



11 Carlsbad Hydrologic Unit Exotic Invasives Removal, San Diego County



Restored riparian habitat



12 Oak Grove, San Diego County



12 Oak Grove, San Diego County



12 Oak Grove, San Diego County



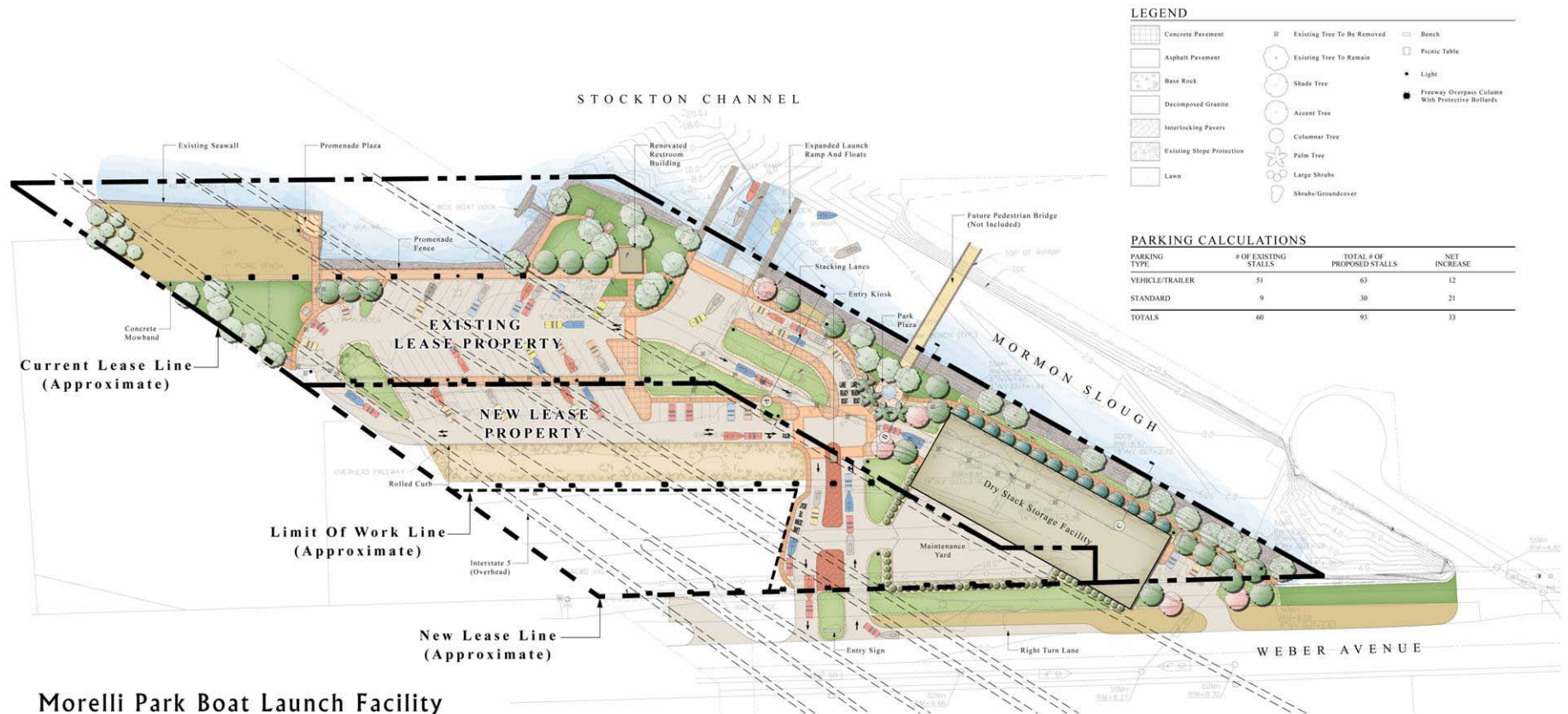
12 Oak Grove, San Diego County



12 Oak Grove, San Diego County

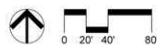


13 Morelli Park Boat Ramp, San Joaquin County

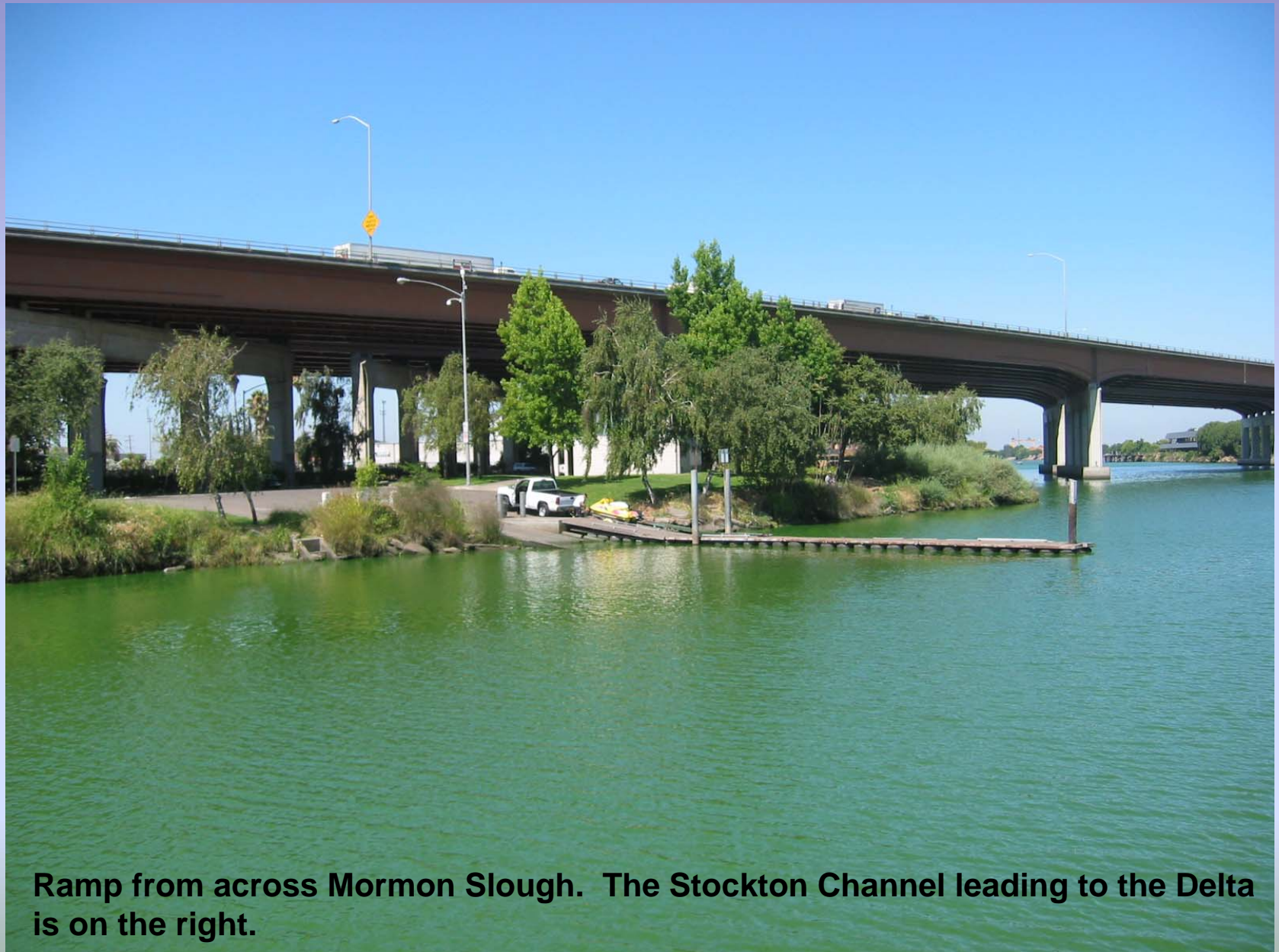


Morelli Park Boat Launch Facility Preliminary Plan

August 5, 2005



13 Morelli Park Boat Ramp, San Joaquin County



Ramp from across Mormon Slough. The Stockton Channel leading to the Delta is on the right.

13 Morelli Park Boat Ramp, San Joaquin County



This ramp will be demolished and replaced with a wider ramp and two new boarding floats.

13 Morelli Park Boat Ramp, San Joaquin County

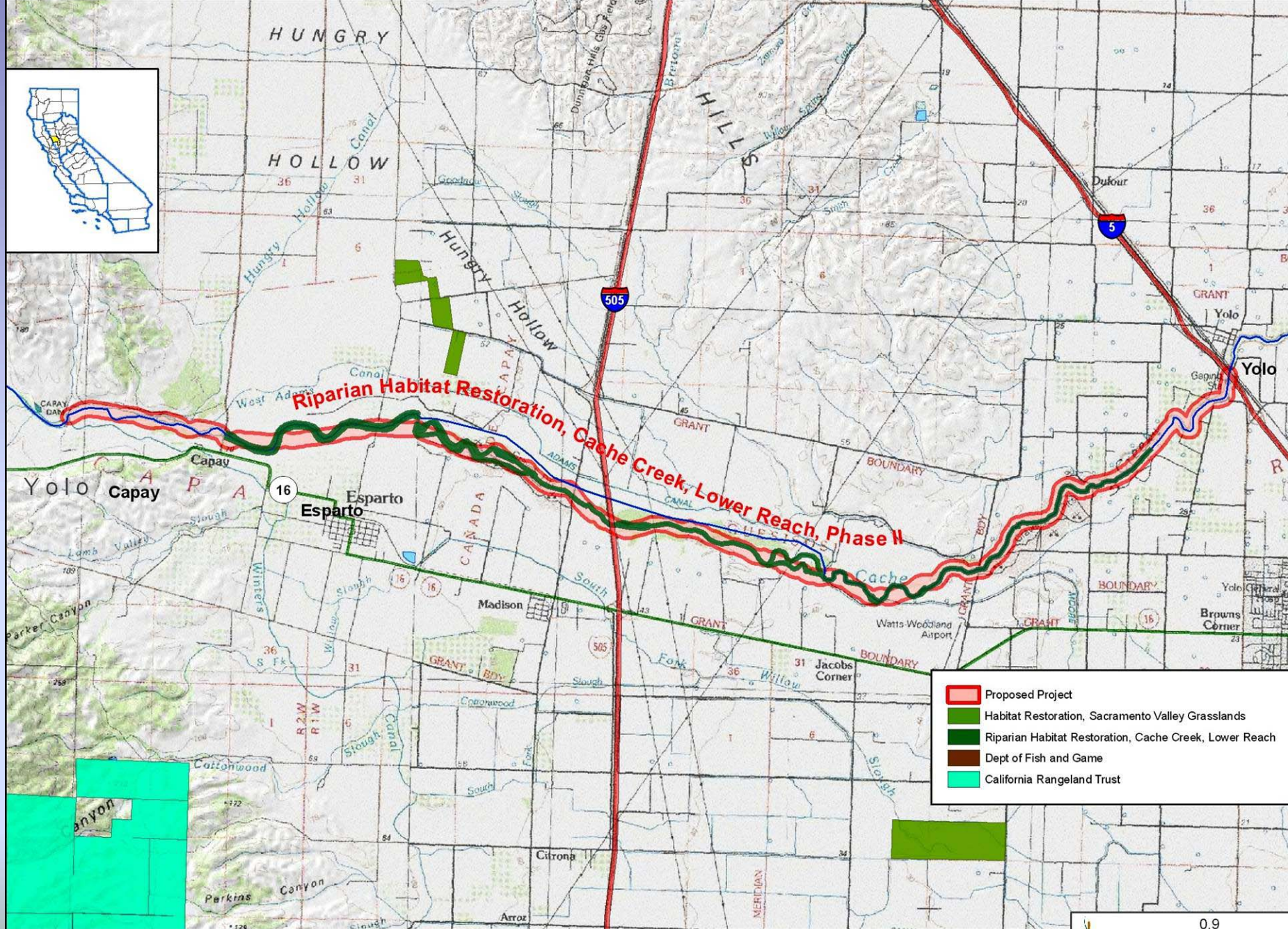


This restroom will be renovated to meet ADA standards.

13 Morelli Park Boat Ramp, San Joaquin County



The parking lot will be expanded and re-stripped to improve traffic flow.



Riparian Habitat Restoration, Cache Creek, Lower Reach, Phase II, Yolo County

14 Riparian Habitat Restoration, Cache Creek, Lower Reach, Phase II, Yolo County

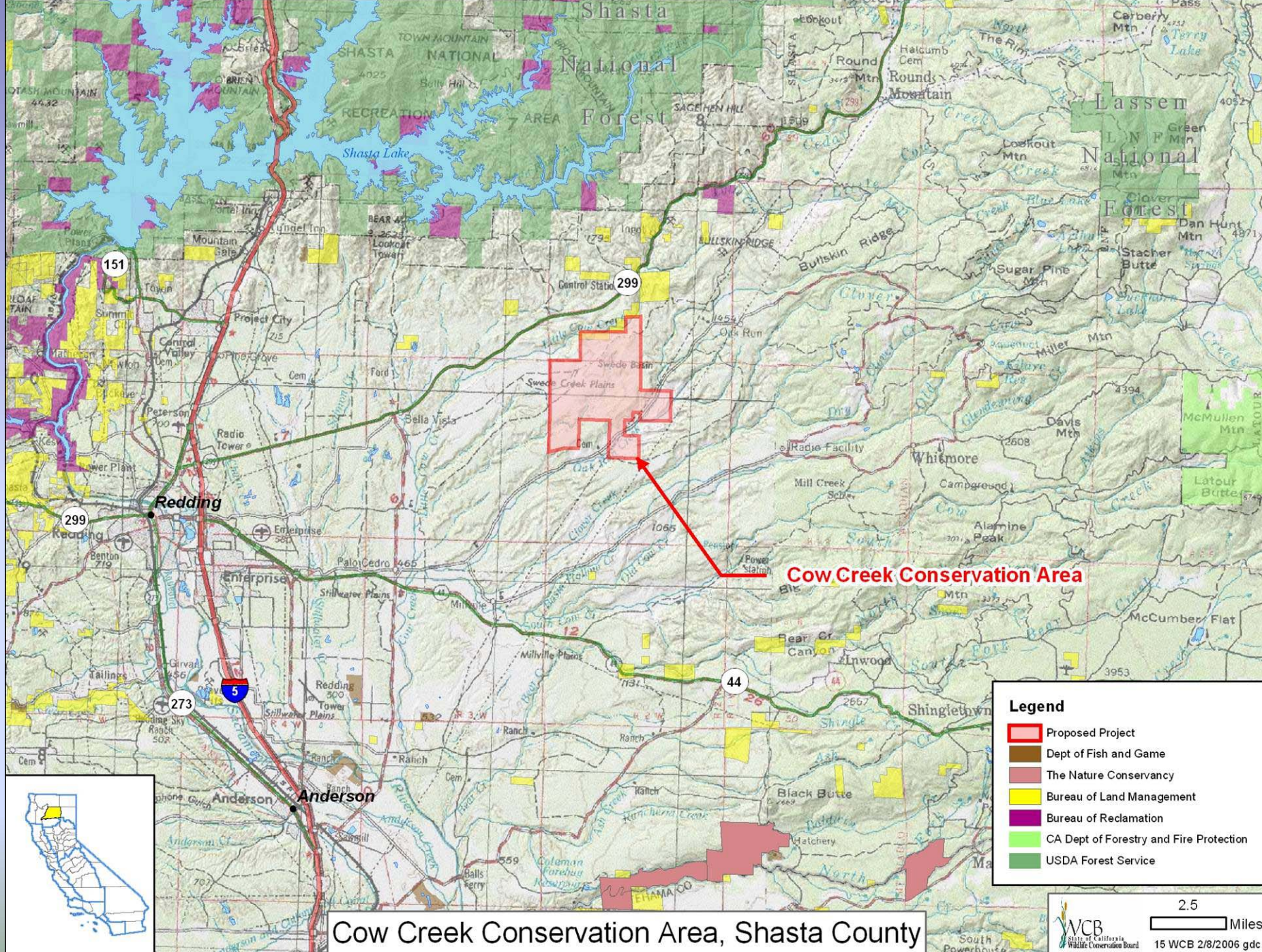


14 Riparian Habitat Restoration, Cache Creek, Lower Reach, Phase II, Yolo County



14 Riparian Habitat Restoration, Cache Creek, Lower Reach, Phase II, Yolo County





15 Cow Creek Conservation Area, Shasta County



15 Cow Creek Conservation Area, Shasta County



15 Cow Creek Conservation Area, Shasta County



15 Cow Creek Conservation Area, Shasta County



15 Cow Creek Conservation Area, Shasta County



15 Cow Creek Conservation Area, Shasta County



16 Six Rivers (Iaqua), Humboldt County



16 Six Rivers (Iaqua), Humboldt County



16 Six Rivers (laqua), Humboldt County

