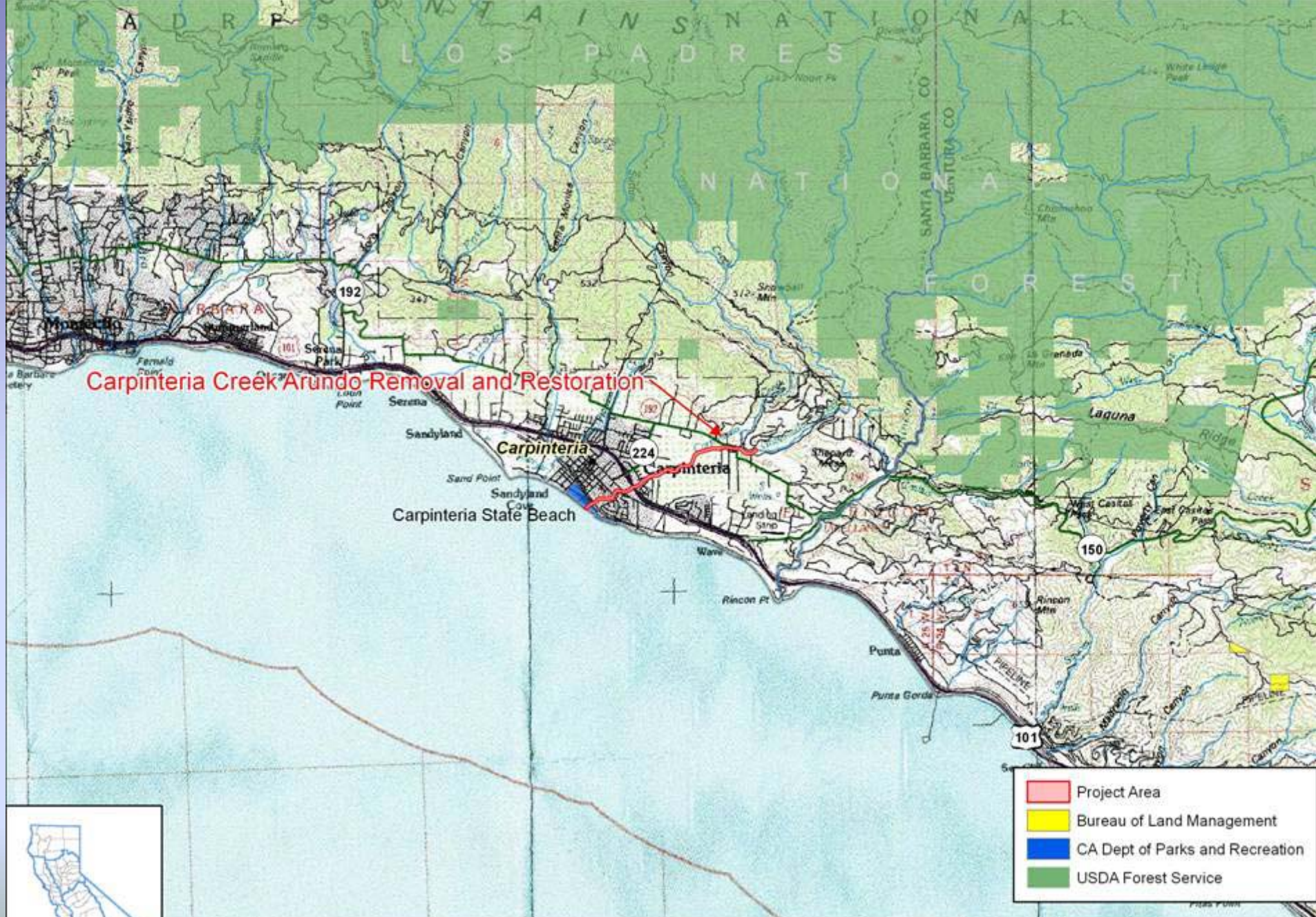


A photograph of a forest pond. In the foreground, there are tall, green grasses. The pond is in the middle ground, reflecting the surrounding trees. The background is a dense forest of tall, green trees.

McCloud Forest Conservation Area

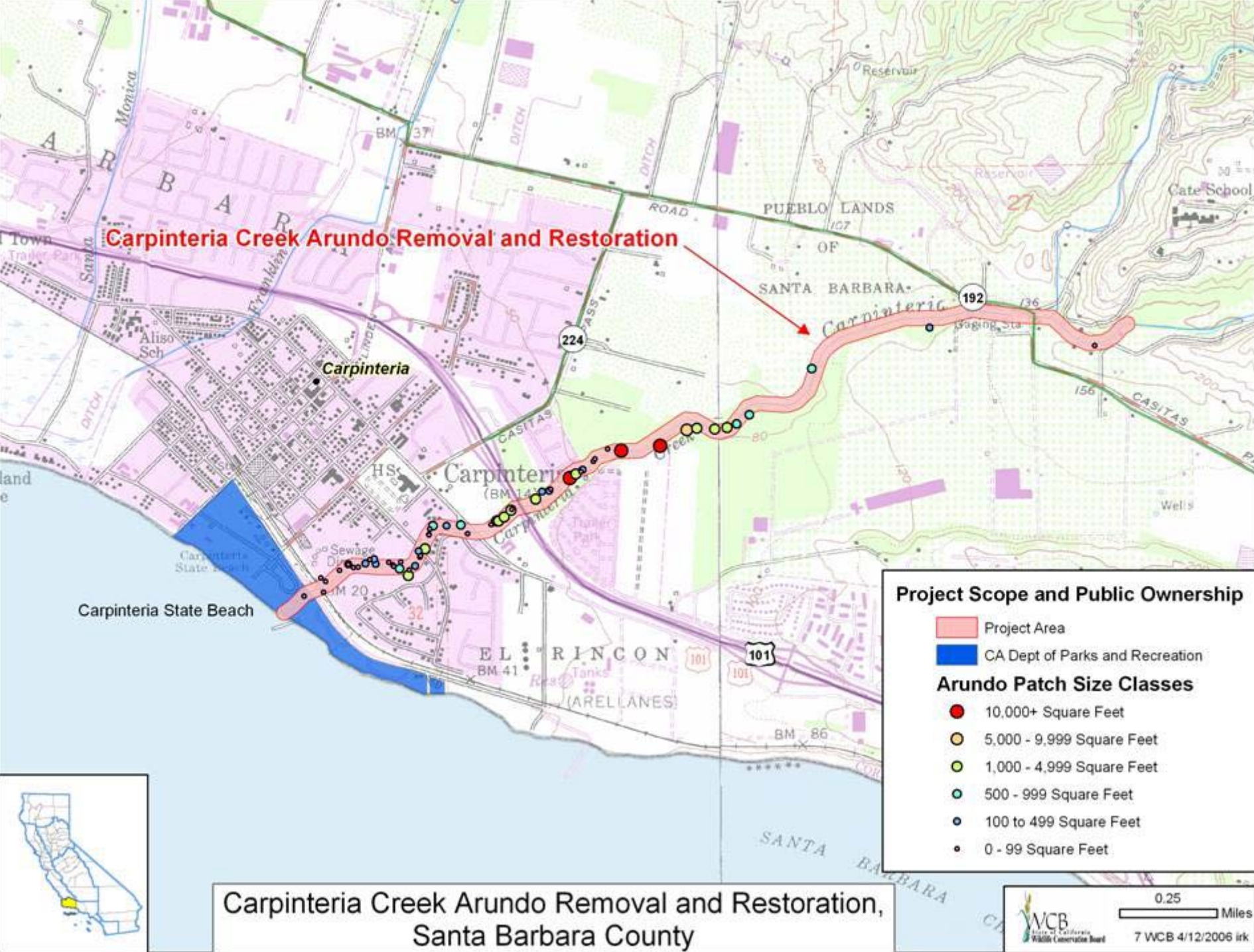
May 25, 2006 WCB Board Meeting
State Capitol, Room 113
Sacramento, California 95814

WCB Staff Photo



Carpinteria Creek Arundo Removal and Restoration,
Santa Barbara County





07 Carpinteria Creek Arundo Removal and Restoration, Santa Barbara County



Typical arundo infestation in untreated section of Carpinteria Creek.

07 Carpinteria Creek Arundo Removal and Restoration, Santa Barbara County



Area treated to remove arundo last fall.

07 Carpinteria Creek Arundo Removal and Restoration, Santa Barbara County

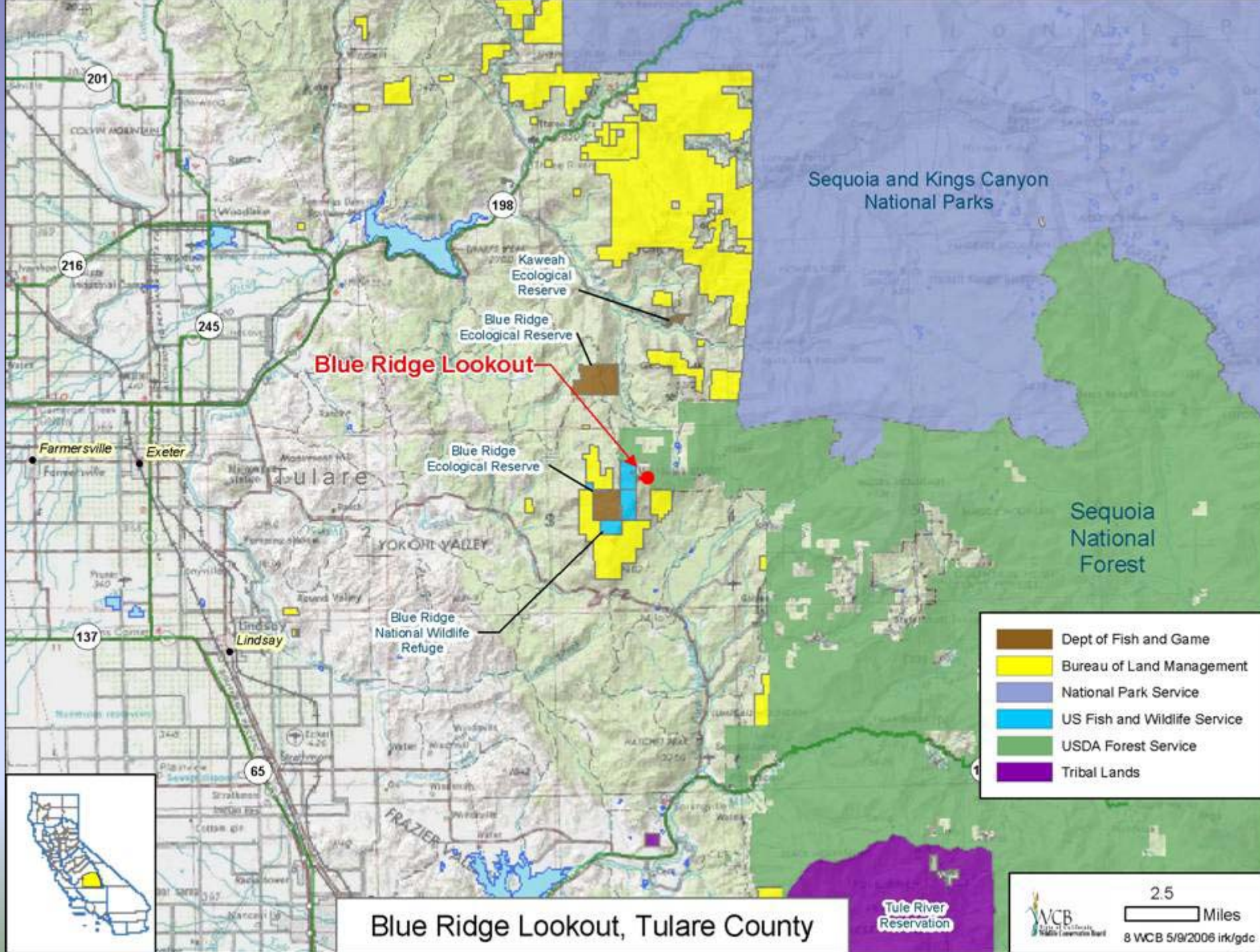


Lone arundo plant (dead) after treatment earlier this winter (2006).

07 Carpinteria Creek Arundo Removal and Restoration, Santa Barbara County



Healthy segment of Carpinteria Creek (the goal of the project).

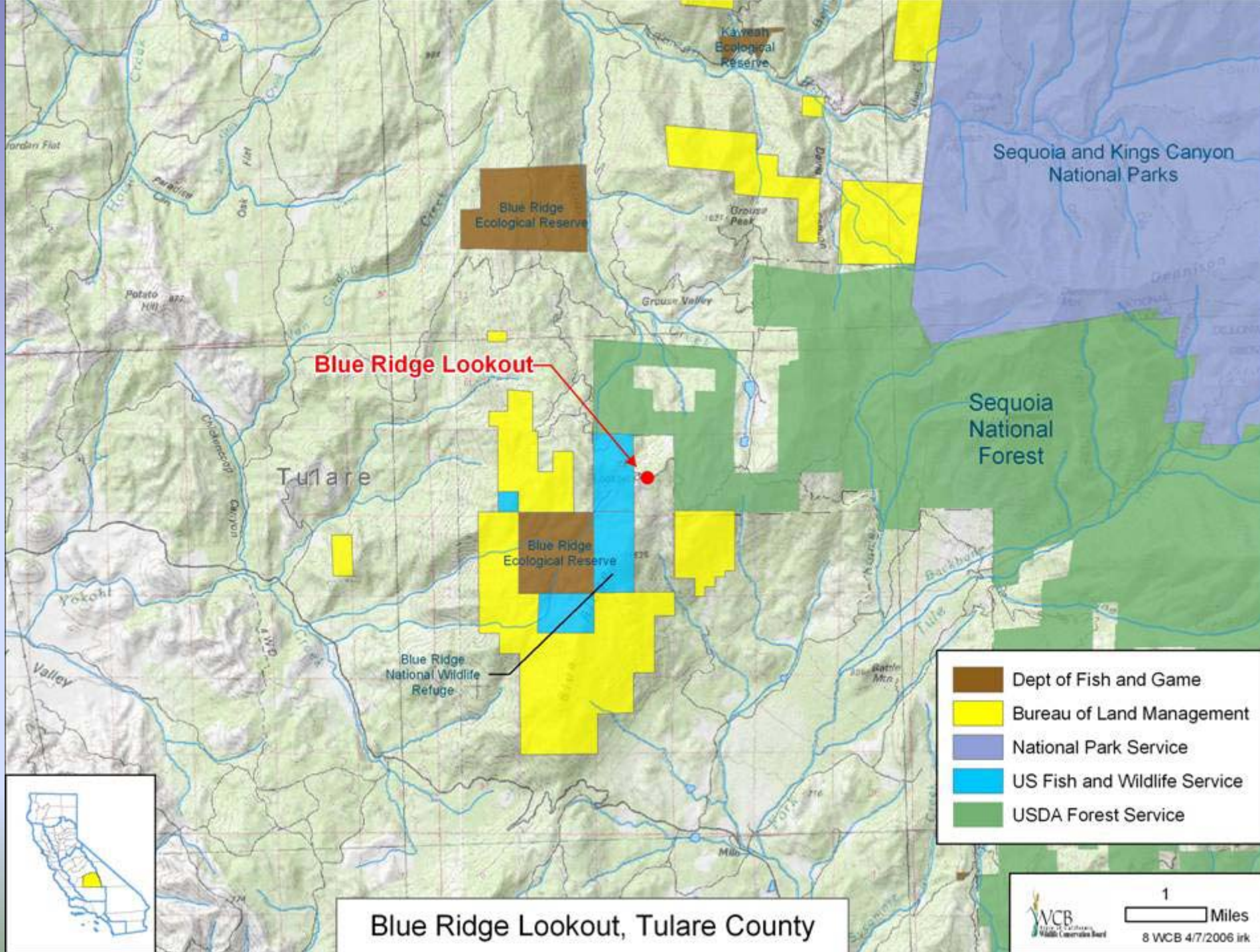


Blue Ridge Lookout, Tulare County

Tule River
Reservation



2.5
Miles
8 WCB 5/9/2006 irk/gdc



08 Blue Ridge Lookout, Tulare County



09 San Joaquin River Parkway, Wagner Property Steward Residence, Madera County



This home will be upgraded so that it meets building codes and can be rented to a site steward.

09 San Joaquin River Parkway, Wagner Property Steward Residence,
Madera County



Debris and outbuildings will be removed.

09 San Joaquin River Parkway, Wagner Property Steward Residence, Madera County

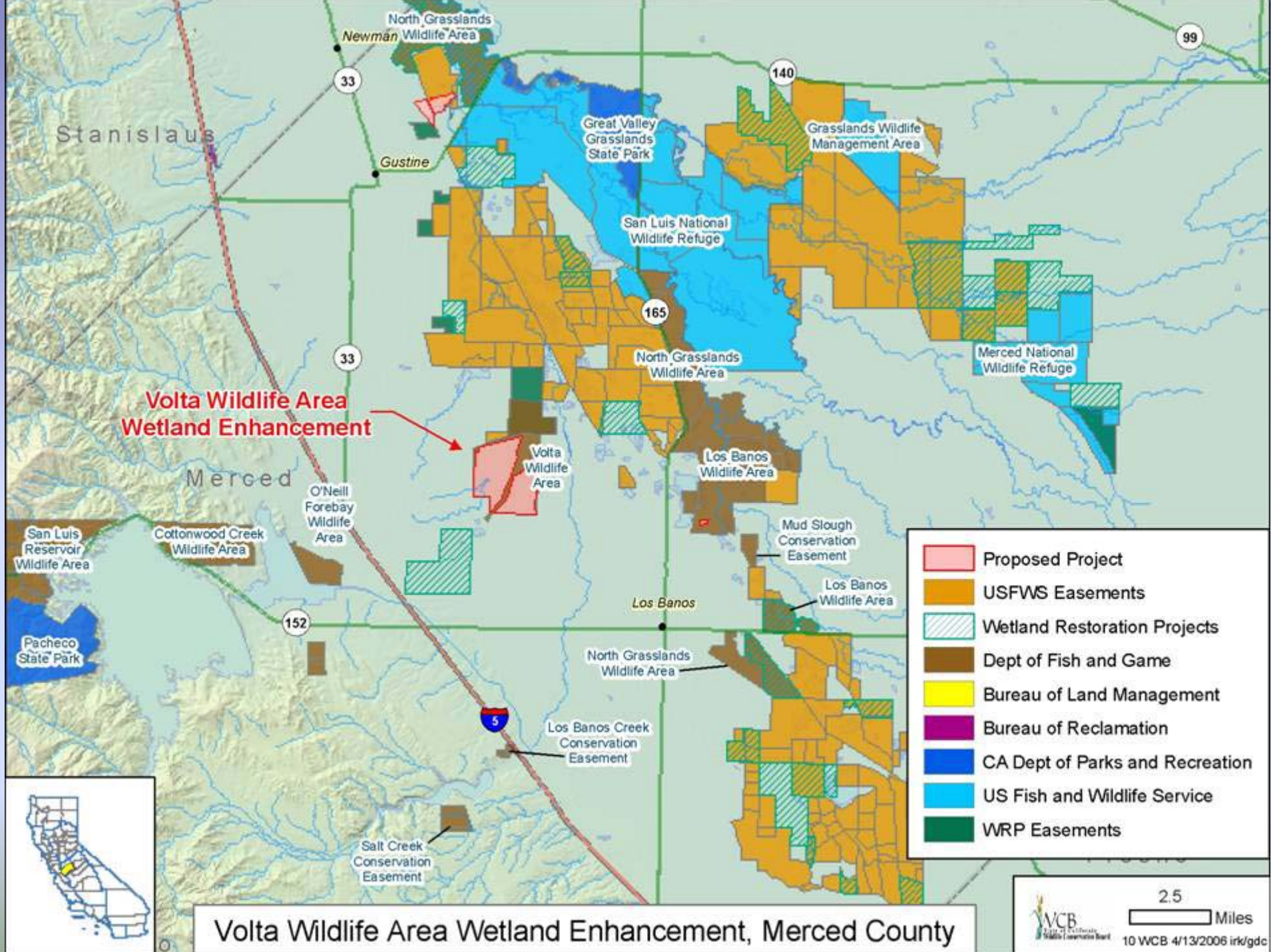


This swimming pool will be filled and abandoned.

09 San Joaquin River Parkway, Wagner Property Steward Residence,
Madera County



This home will be demolished and removed.



10 Volta Wildlife Area Wetland Enhancement, Merced County



10 Volta Wildlife Area Wetland Enhancement, Merced County



Looking south at main Volta Pump Station. The collapsed pipeline lies below the road in foreground (see recent repair). The second pipeline that needs to be replaced lies on the opposite side of the Volta Wasteway, which is just visible on left side of photo.

10 Volta Wildlife Area Wetland Enhancement, Merced County

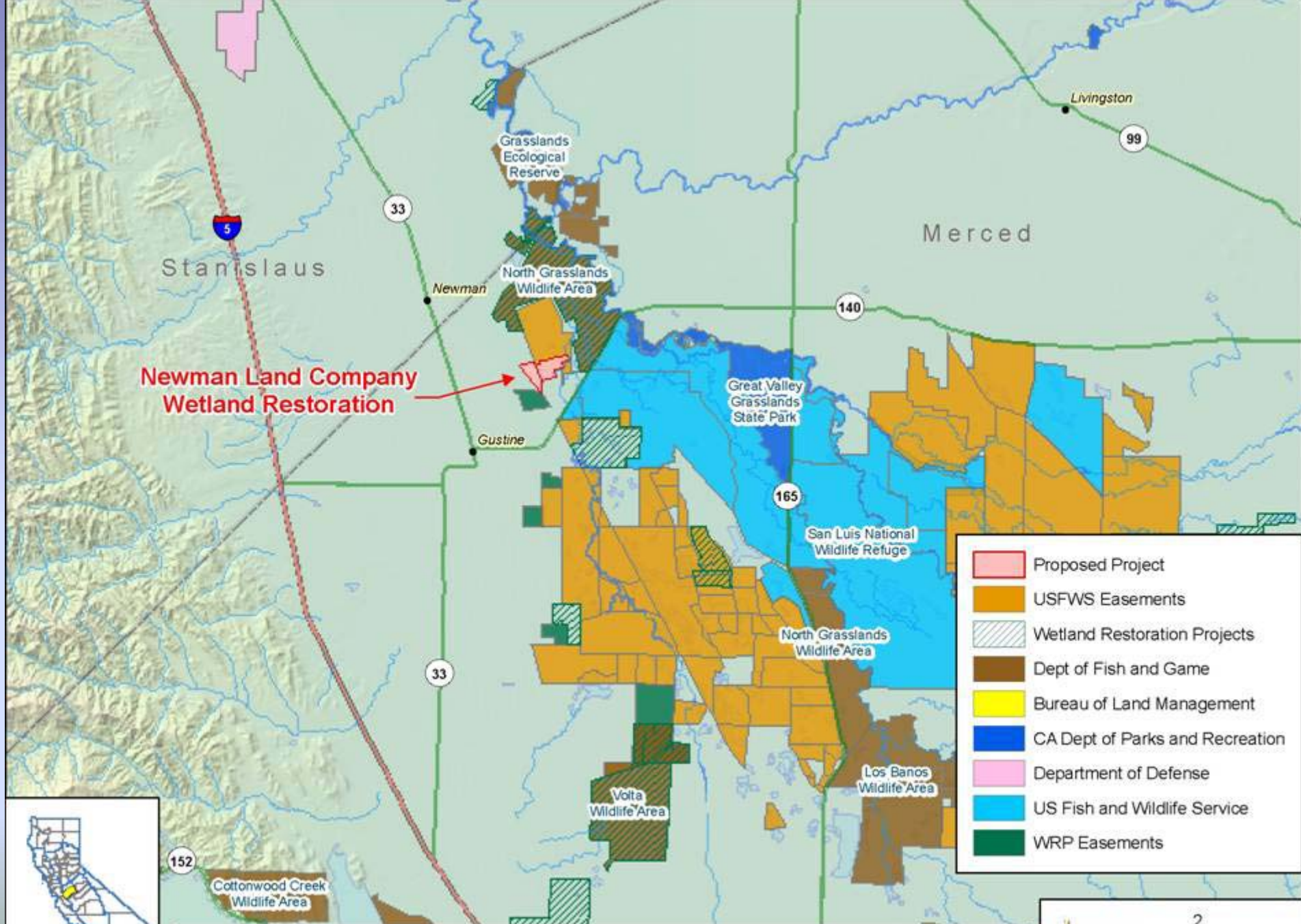


The recently renovated canal lies at the terminus of the pipeline and supplies water to most of the western half of the Wildlife Area.

10 Volta Wildlife Area Wetland Enhancement, Merced County



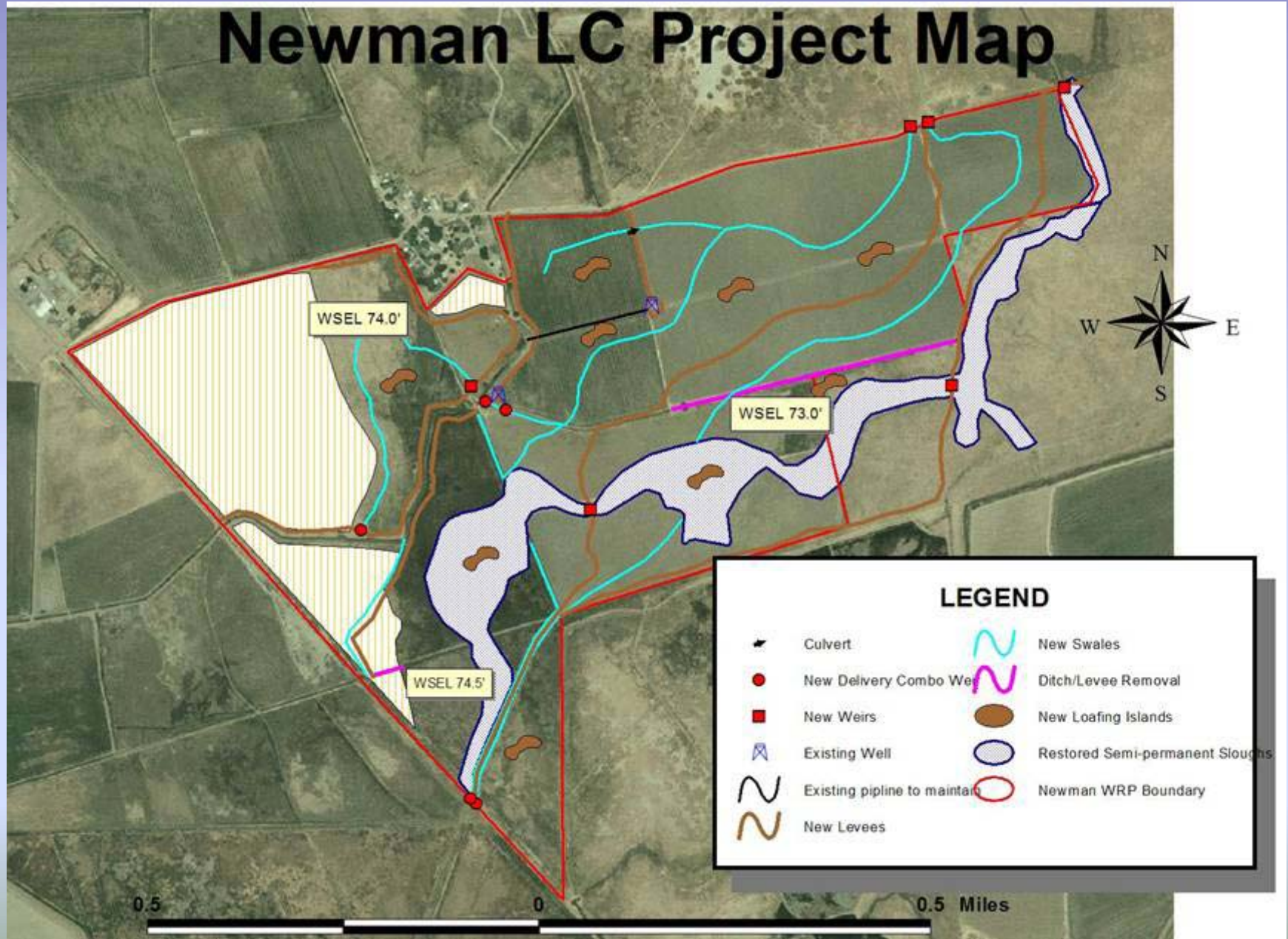
An example of the prime wetland habitat found on the Wildlife Area.



Newman Land Company Wetland Restoration, Merced County



11 Newman Land Company Wetland Restoration, Merced County



11 Newman Land Company Wetland Restoration, Merced County

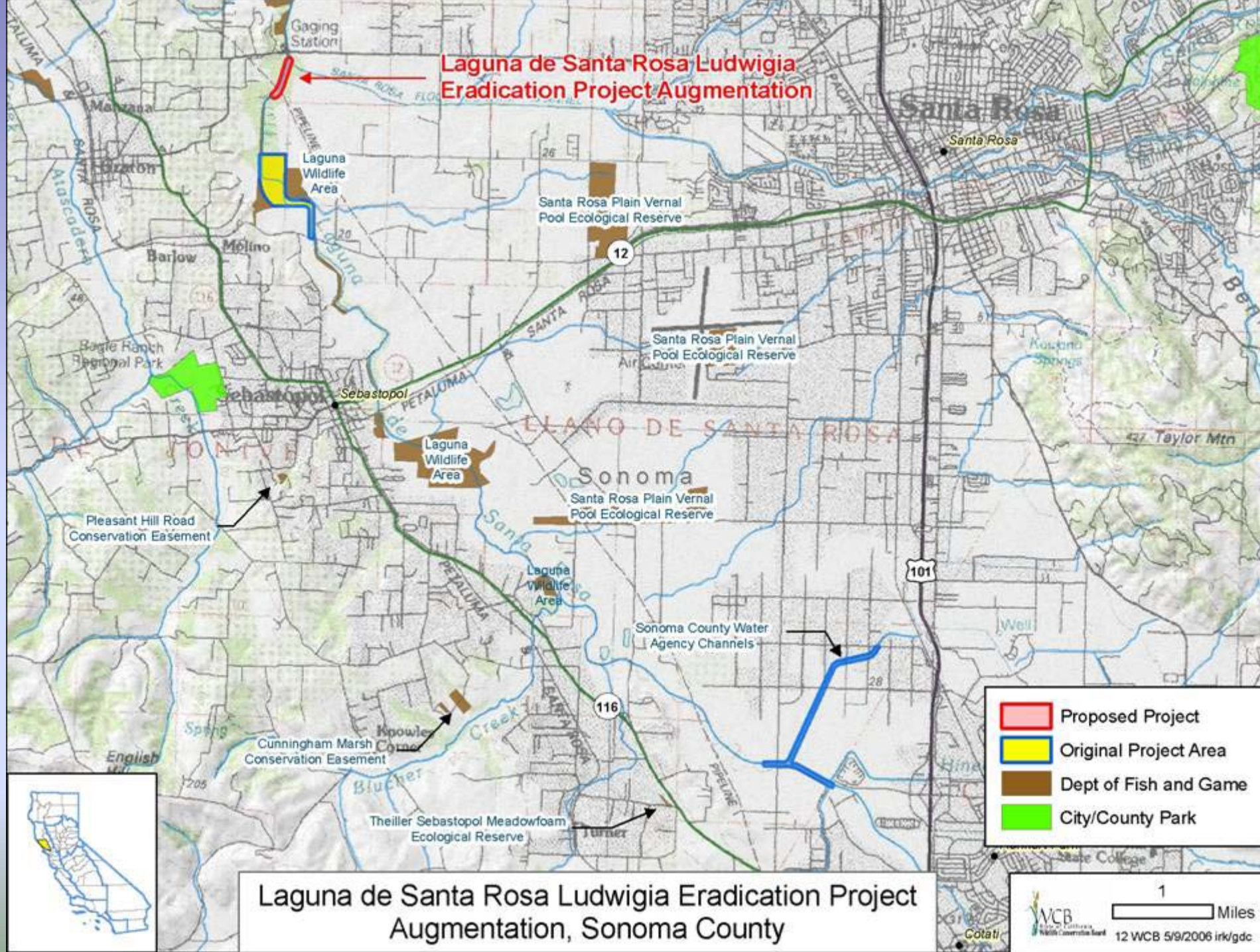


Existing marginal pastureland will be restored to upland habitat.

11 Newman Land Company Wetland Restoration, Merced County



Existing slough will be restored to provide more open water for summer waterfowl broods. Areas adjacent will become seasonal wetlands to provide winter foraging areas.



12 Laguna de Santa Rosa Ludwigia Eradication Project Augmentation, Sonoma County



Pre-Treatment Photo View facing north on the Laguna channel taken prior to herbicide application, July 2005

12 Laguna de Santa Rosa Ludwigia Eradication Project Augmentation, Sonoma County



Post- Treatment Photo Same view, after major herbicide application, August 2005.

12 Laguna de Santa Rosa *Ludwigia* Eradication Project Augmentation, Sonoma County



Post-Removal Photo Same view, following herbicide application and physical removal of *Ludwigia* sp. in the channel, October 2005.

12 Laguna de Santa Rosa Ludwigia Eradication Project Augmentation, Sonoma County



MarshMog™



Argo



Airboat



Truck Mounted Sprayer

12 Laguna de Santa Rosa Ludwigia Eradication Project Augmentation, Sonoma County



Aquatic Weed Harvester



Cookie Cutter



Long Reach Excavator

12 Laguna de Santa Rosa Ludwigia Eradication Project Augmentation, Sonoma County

Dump Truck



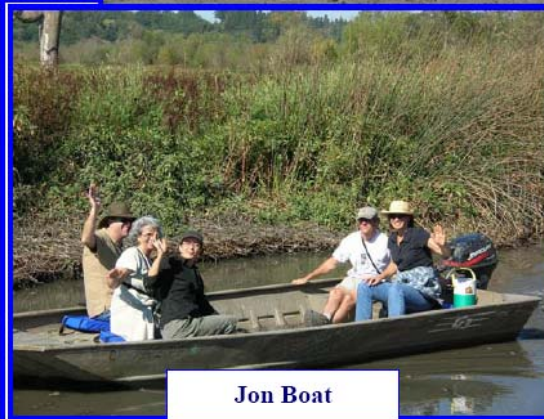
Skip Loaders



Crane

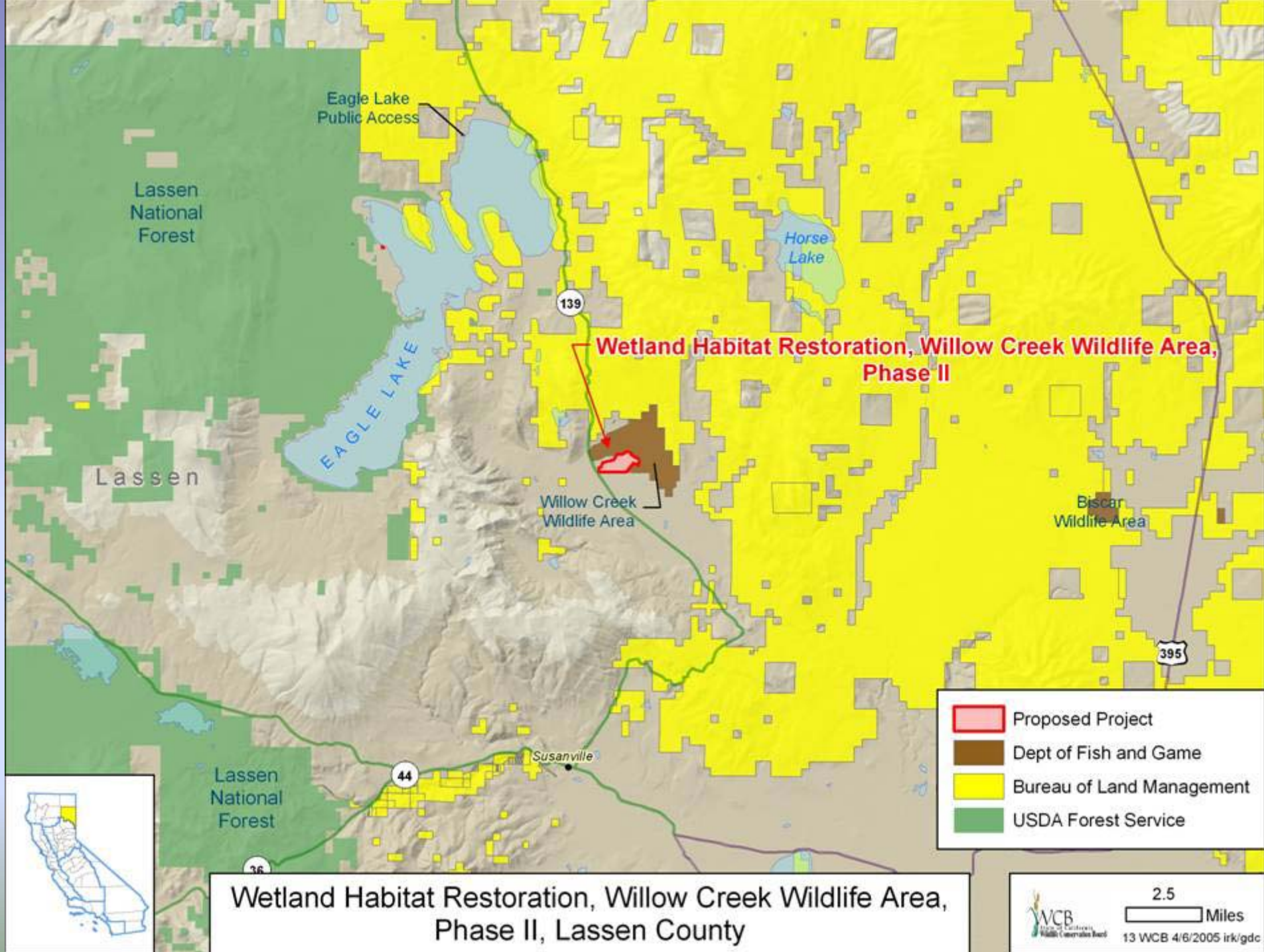


Jon Boat



Water Trailer





13 Wetland Habitat Restoration, Willow Creek Wildlife Area, Phase II, Lassen County

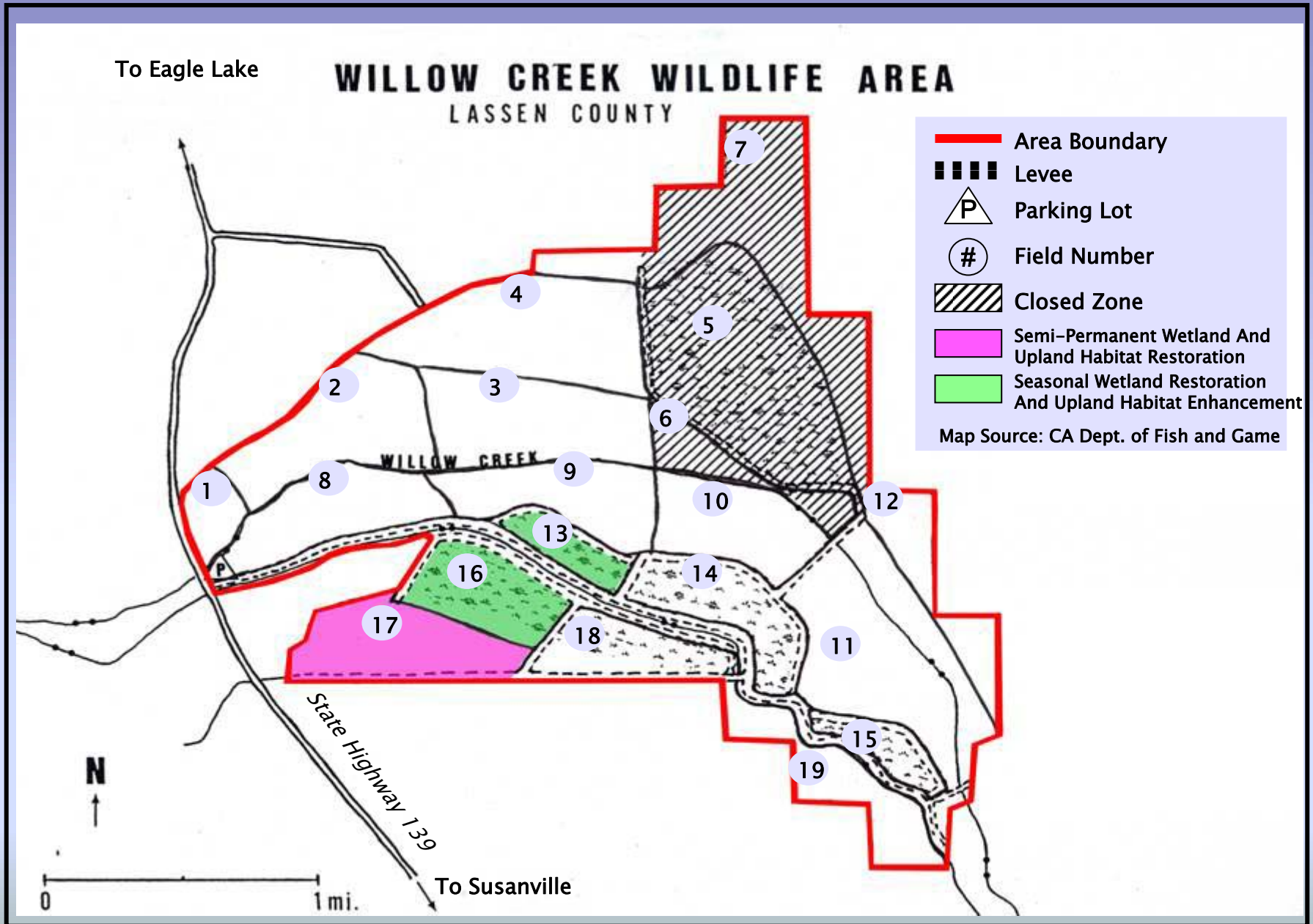


Figure 5. Locations Where Specific Habitat Improvements Will Be Conducted at Willow Creek Wildlife Area

13 Wetland Habitat Restoration, Willow Creek Wildlife Area, Phase II, Lassen County

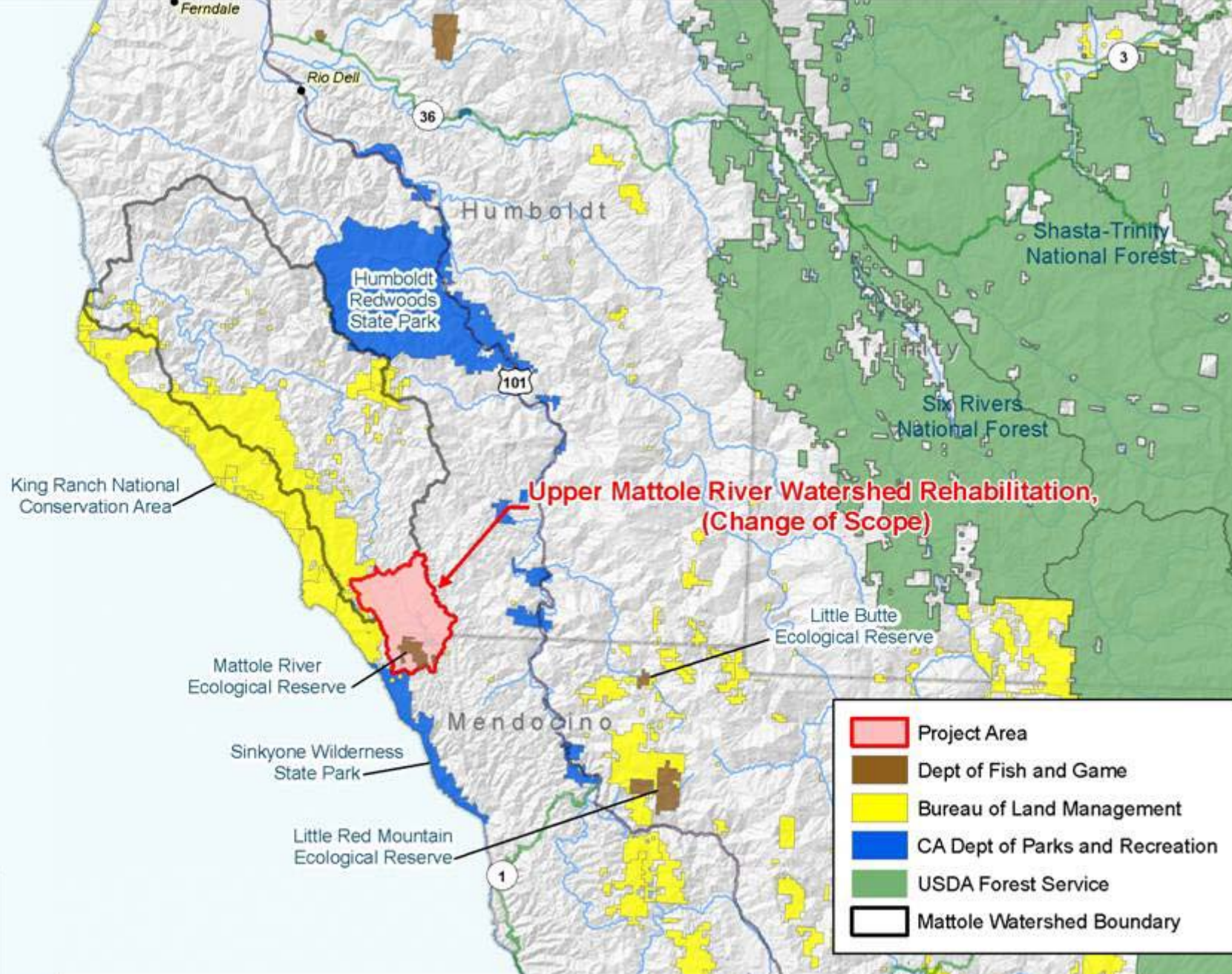


Upland area to be restored.

13 Wetland Habitat Restoration, Willow Creek Wildlife Area, Phase II, Lassen County

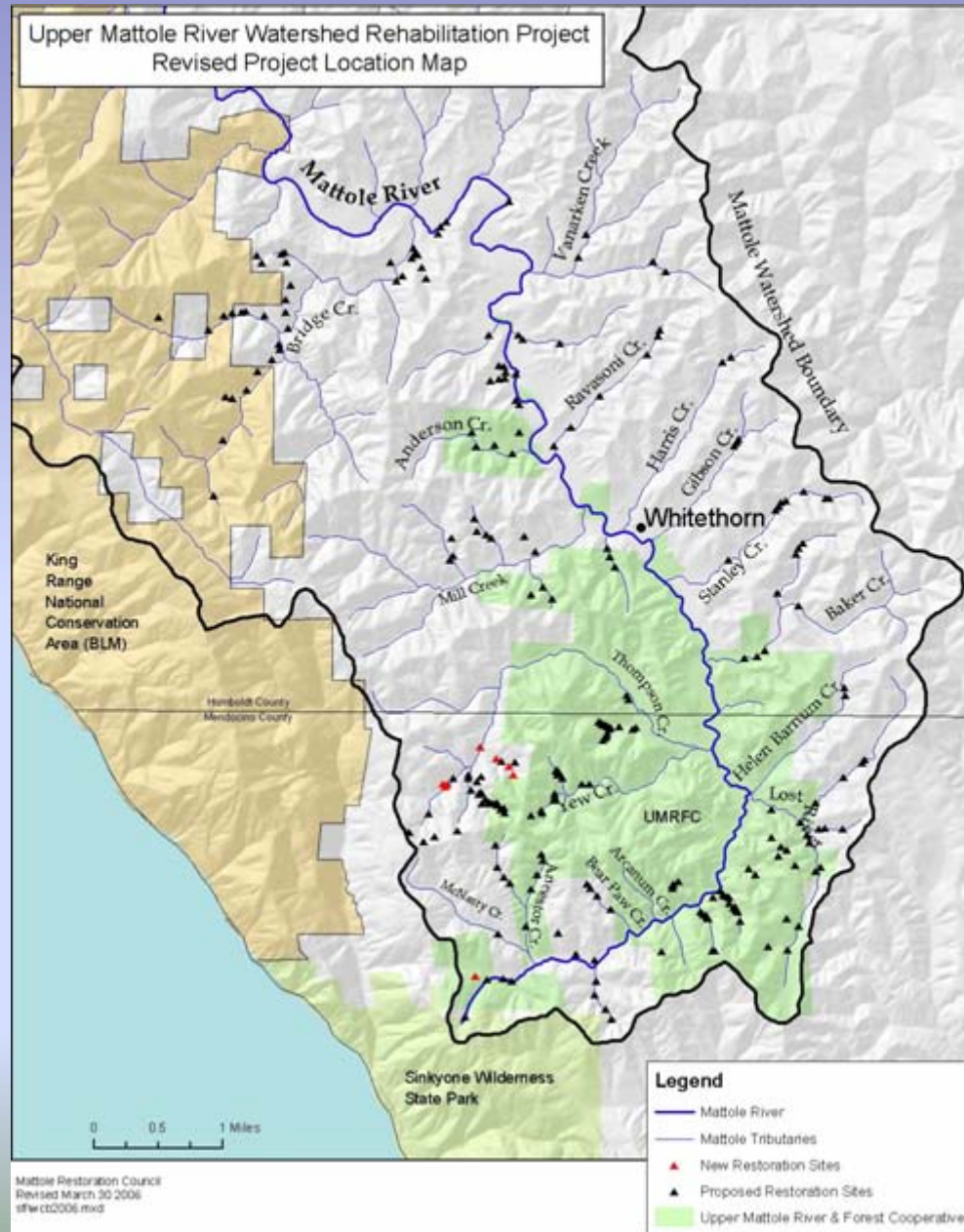


Existing wetlands on the Wildlife Area.



Upper Mattole River Watershed Rehabilitation (Change of Scope), Humboldt and Mendocino Counties

14 Upper Mattole River Watershed Rehabilitation (Change of Scope), Humboldt and Mendocino County



14 Upper Mattole River Watershed Rehabilitation (Change of Scope), Humboldt and Mendocino County



Green Creek #407: Old access road blocks stream channel causing diversion of stream along road and 12ft deep headcut in erosion ditch.

14 Upper Mattole River Watershed Rehabilitation (Change of Scope), Humboldt and Mendocino County



Green Creek #413: Site 407 is just above. The road makes a switchback between site 407 and site 413. The stream is being moved back to its original channel and will flow through culverts where the stream crosses the access road.

14 Upper Mattole River Watershed Rehabilitation (Change of Scope), Humboldt and Mendocino County



Green Creek #407: 12ft deep headcut in erosion ditch caused by diversion of stream channel.

14 Upper Mattole River Watershed Rehabilitation (Change of Scope), Humboldt and Mendocino County

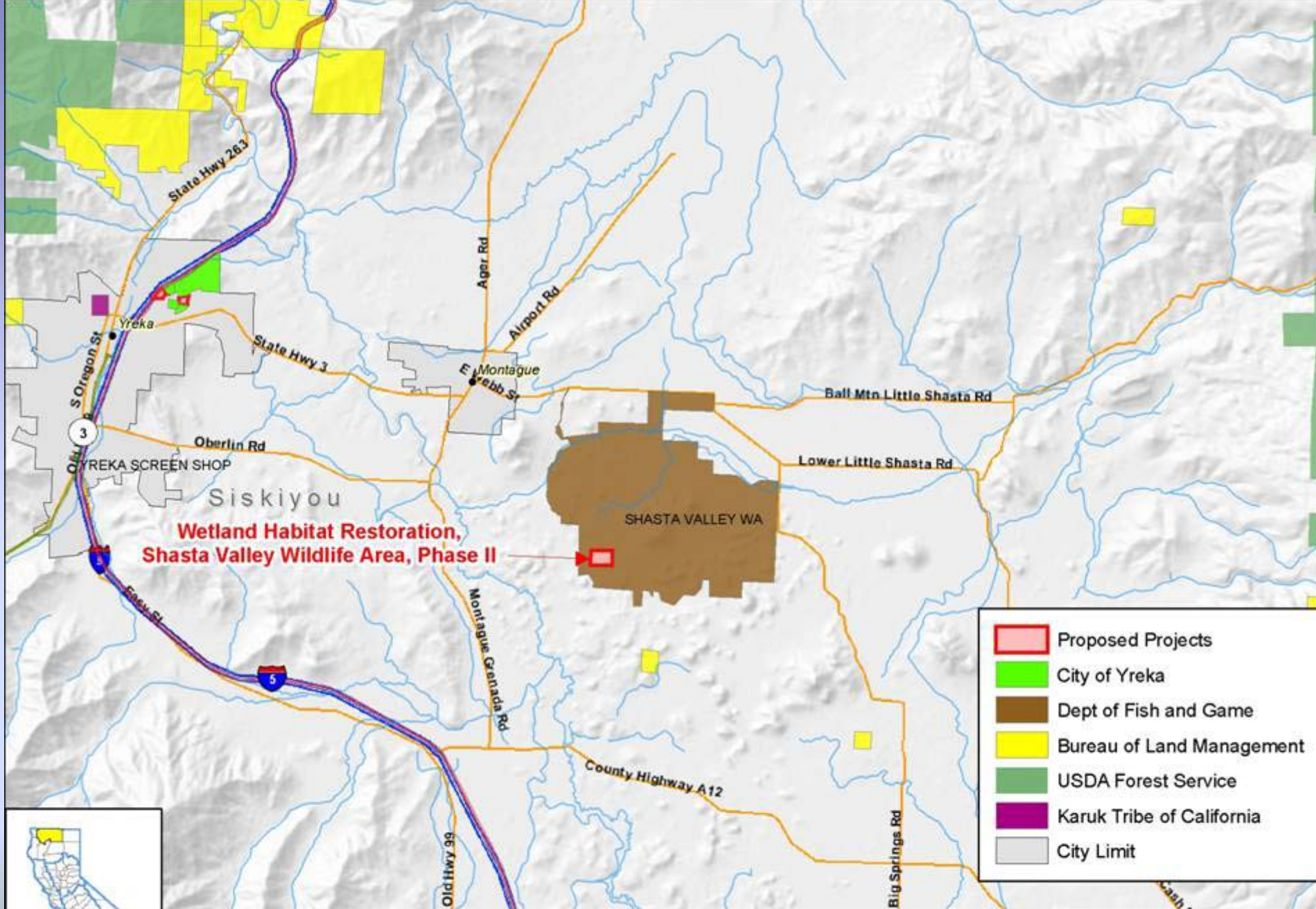


Green Creek #407: Completed site with rock armoring around culvert.

14 Upper Mattole River Watershed Rehabilitation (Change of Scope), Humboldt and Mendocino County

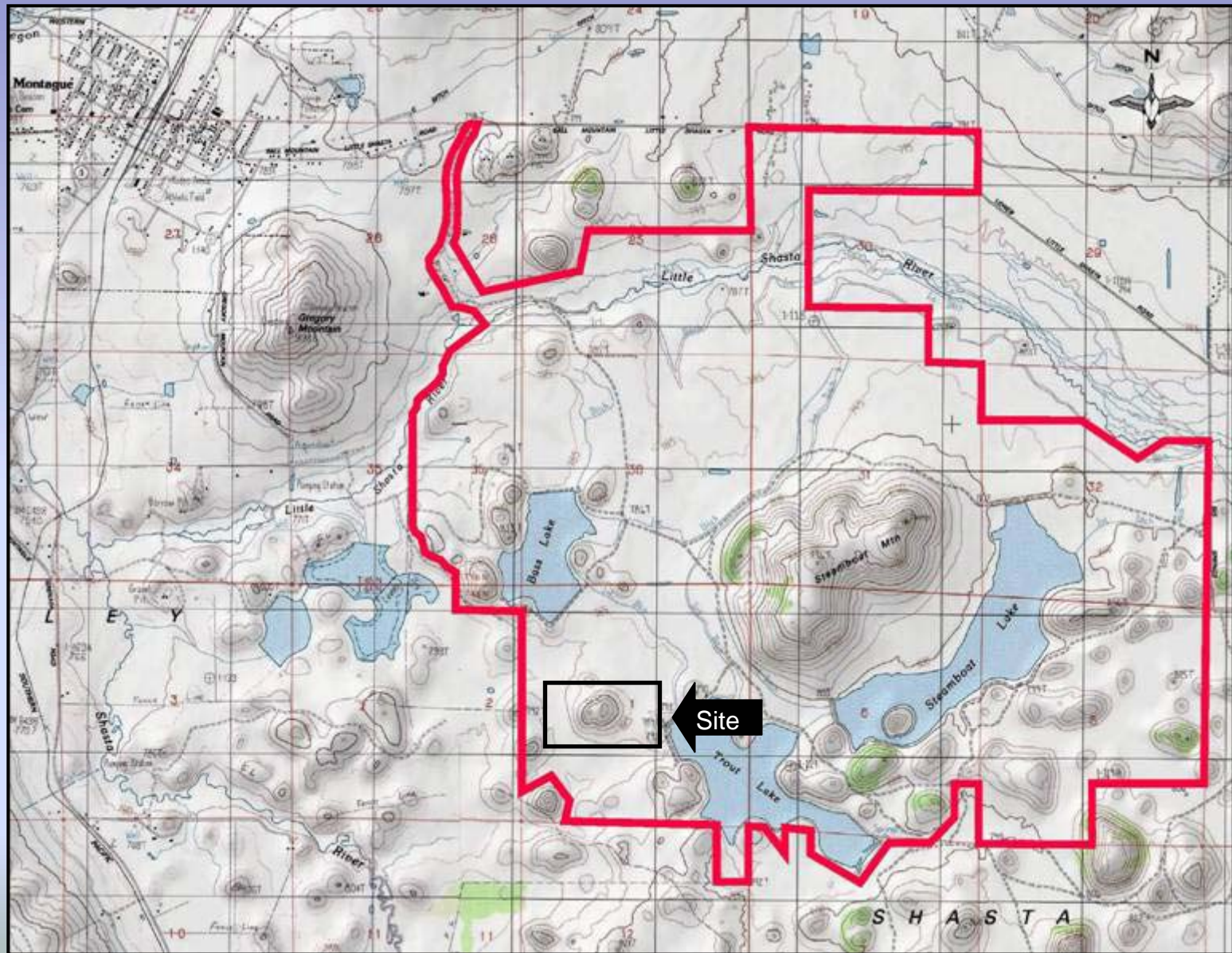


Green Creek #407 & 413: Completed sites with rock armoring around culverts and connecting stream channel.



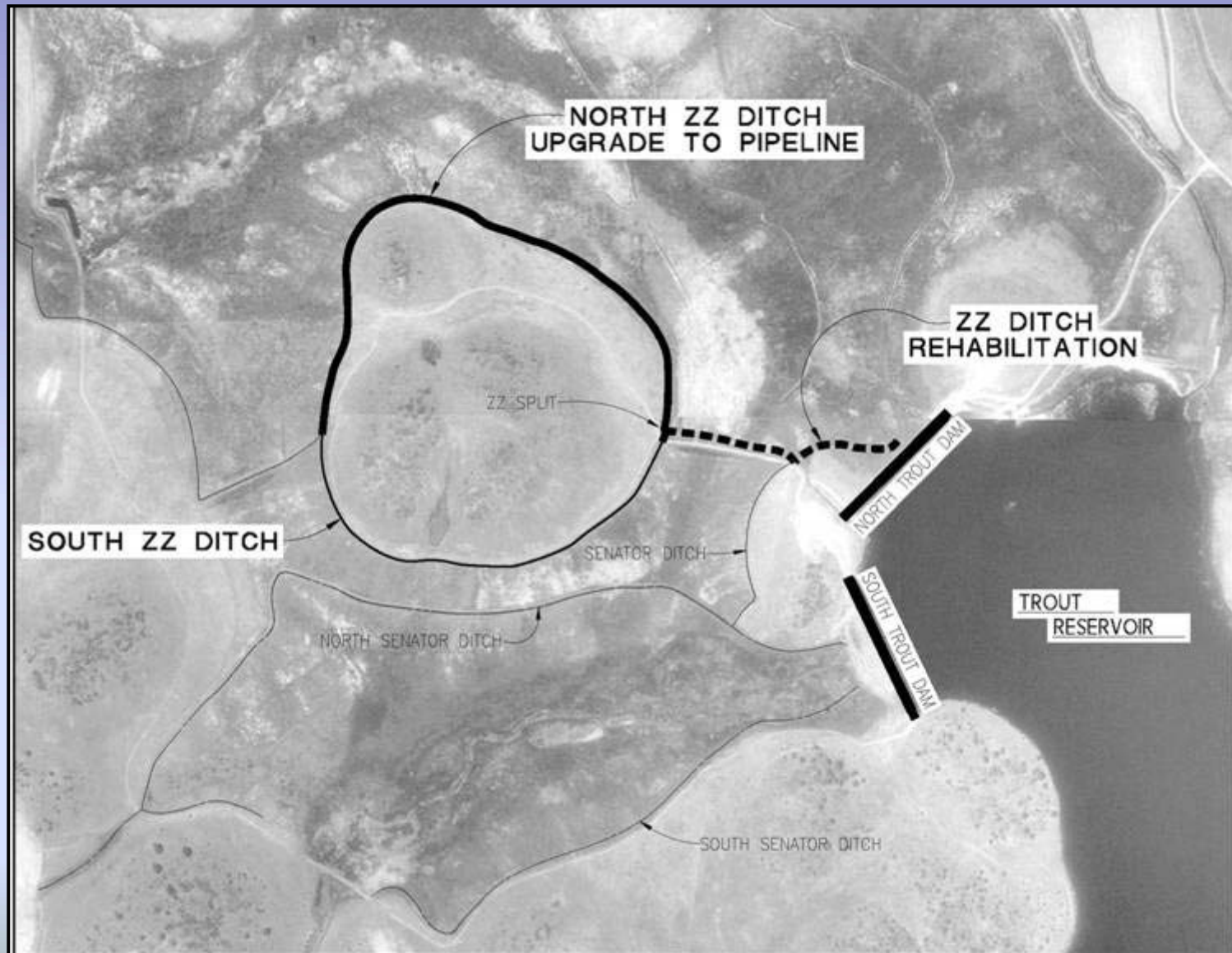
Wetland Habitat Restoration, Shasta Valley Wildlife Area, Phase II, Siskiyou County

15 Wetland Habitat Restoration, Shasta Valley Wildlife Area, Phase II, Siskiyou County



Project Location

15 Wetland Habitat Restoration, Shasta Valley Wildlife Area, Phase II, Siskiyou County



Project Improvements

15 Wetland Habitat Restoration, Shasta Valley Wildlife Area, Phase II, Siskiyou County



Wetland area that will be enhanced with the renovation of the ZZ Ditch.

15 Wetland Habitat Restoration, Shasta Valley Wildlife Area, Phase II, Siskiyou County



Rare heavy snowstorm on the wetland area below Trout Reservoir. ZZ Ditch in foreground.

15 Wetland Habitat Restoration, Shasta Valley Wildlife Area, Phase II, Siskiyou County

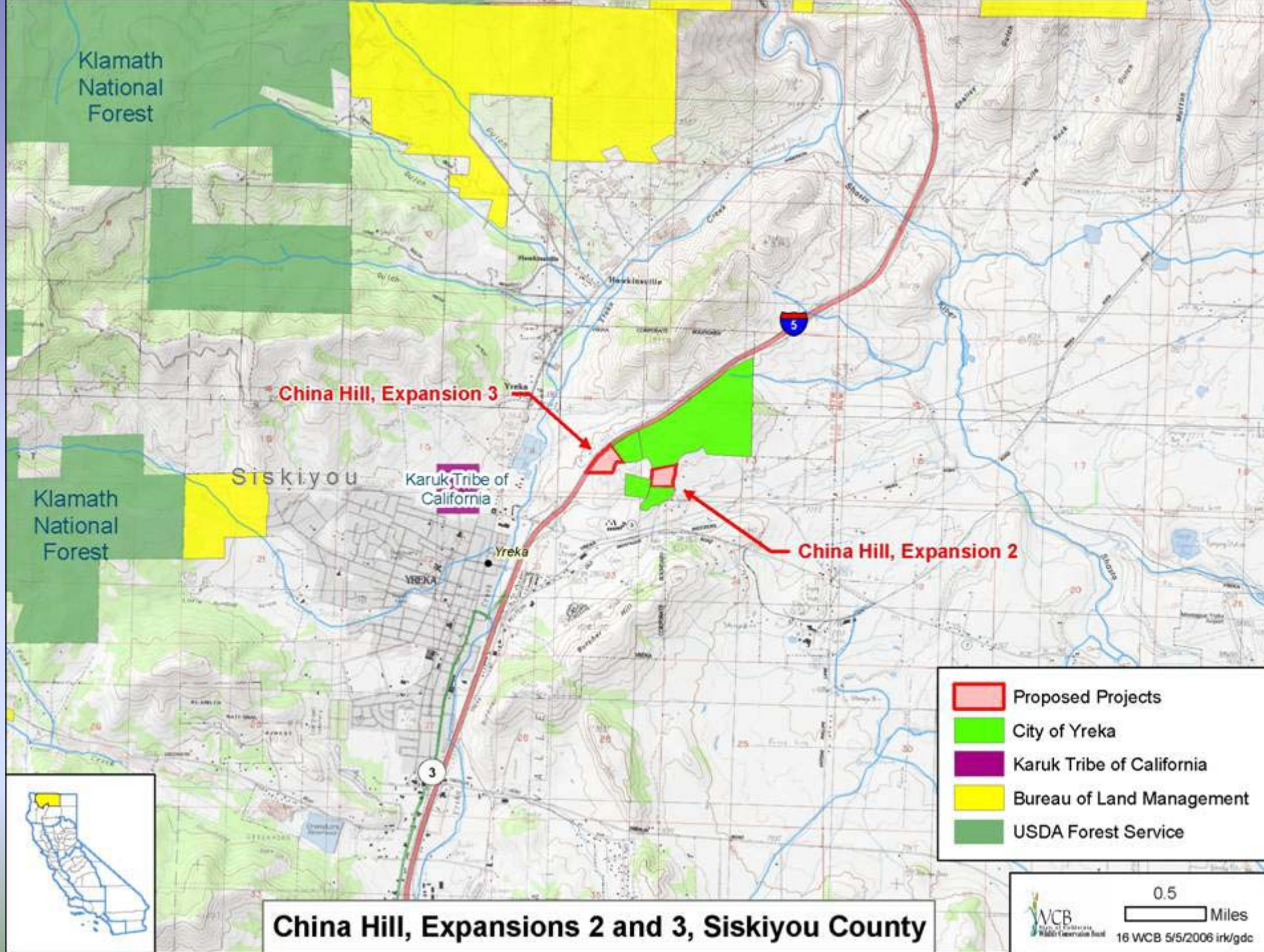


Typical existing dilapidated water control structure on the Wildlife Area.

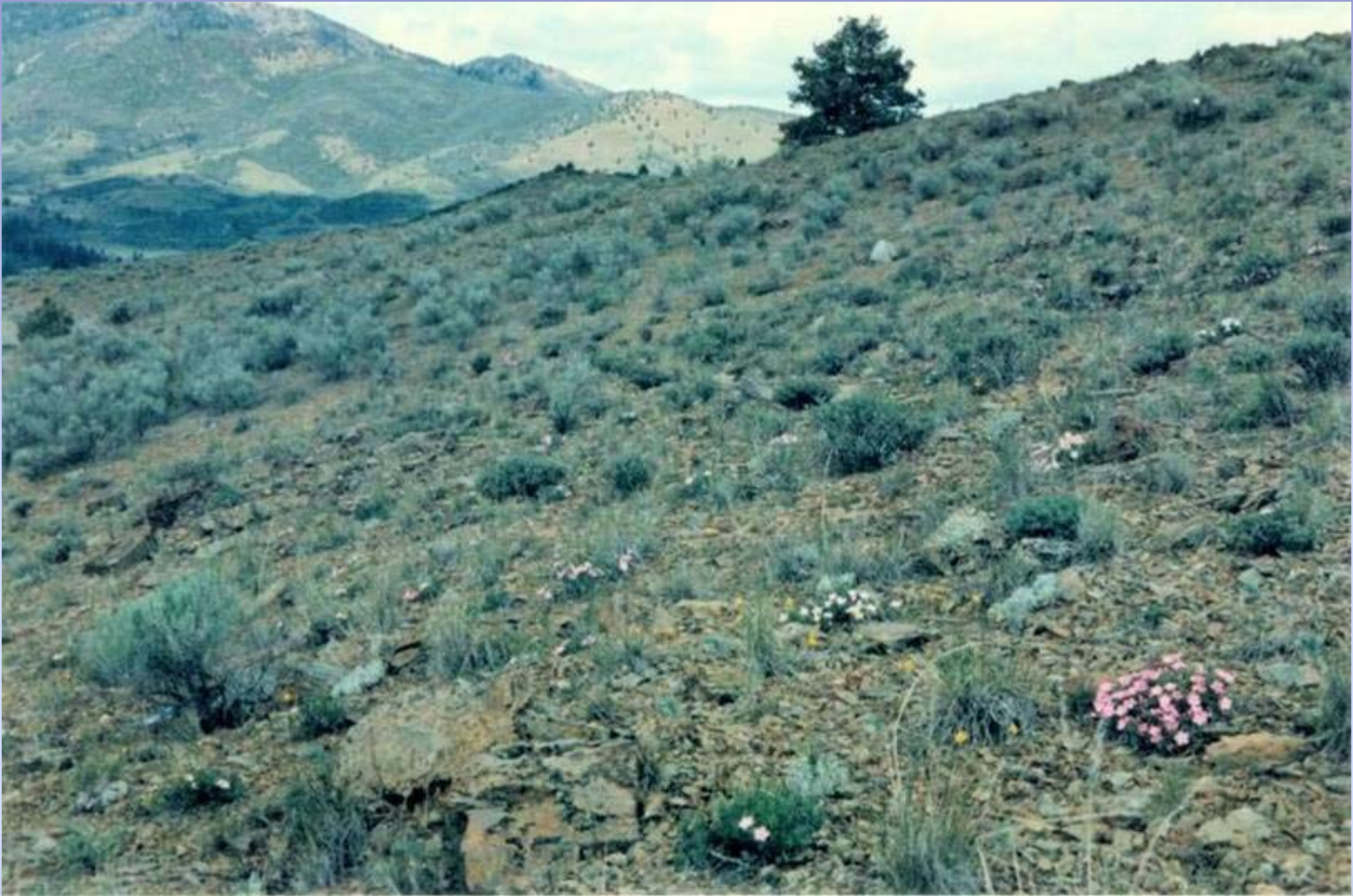
15 Wetland Habitat Restoration, Shasta Valley Wildlife Area, Phase II, Siskiyou County



New structure in place after improvements from Phase I were completed.



16 China Hill, Expansions 2 and 3, Siskiyou County

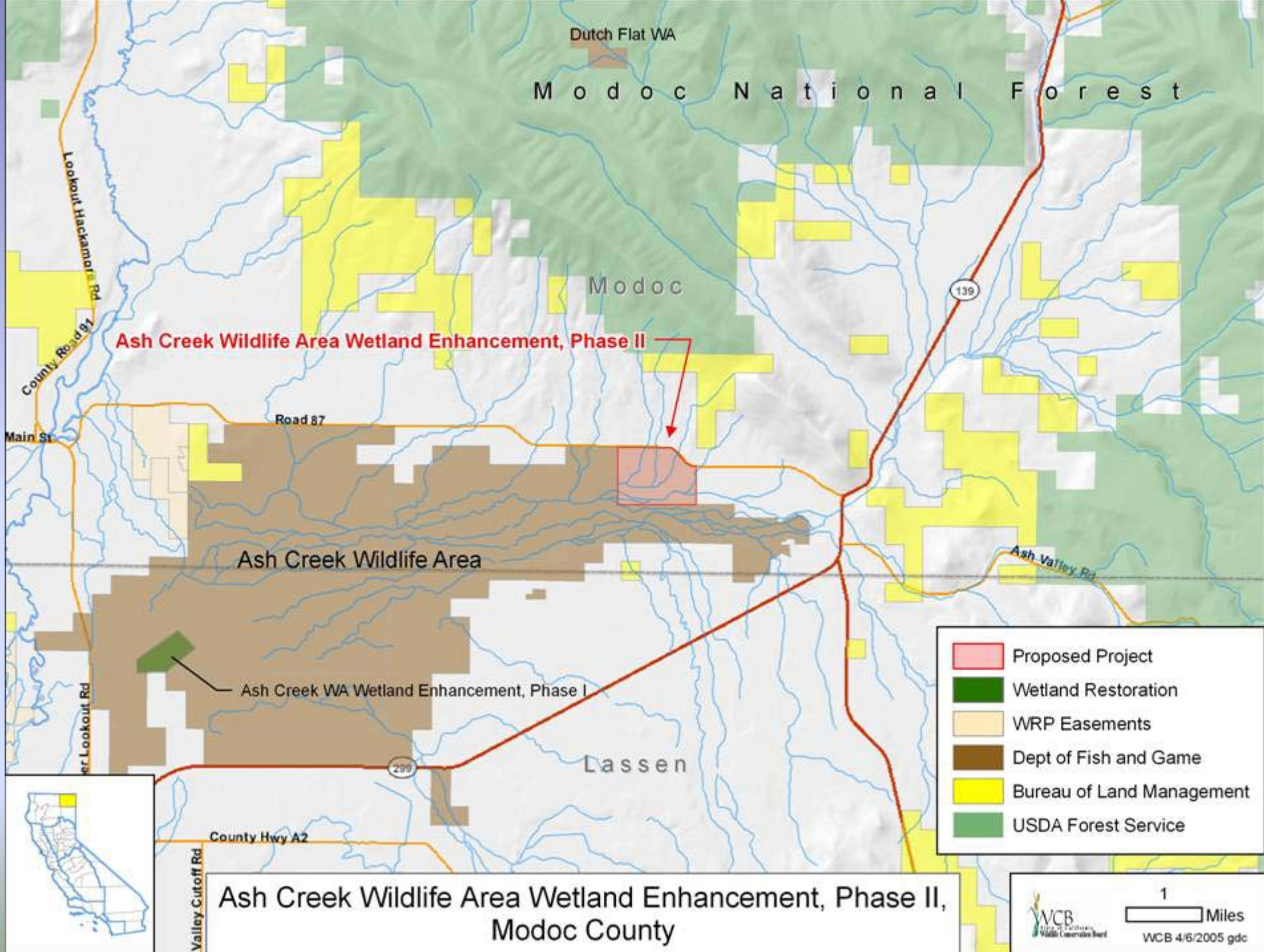


16 China Hill, Expansions 2 and 3, Siskiyou County

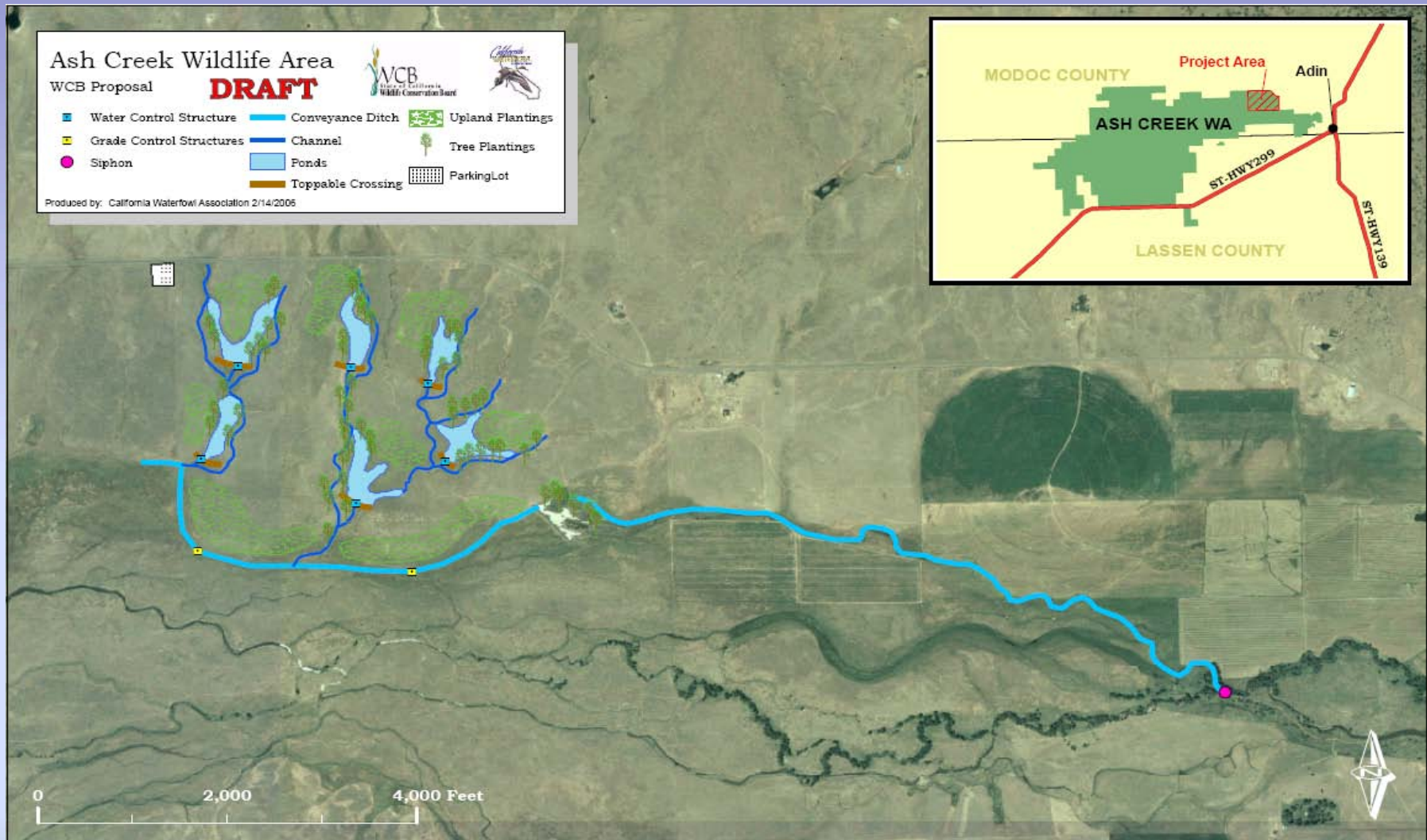


16 China Hill, Expansions 2 and 3, Siskiyou County





17 Ash Creek Wildlife Area, Wetland Enhancement, Phase II, Modoc County



17 Ash Creek Wildlife Area, Wetland Enhancement, Phase II, Modoc County



Siphon across Ash Creek is leaking and, since it collects trash, is likely to fail completely. This section needs to be repaired, strengthened and supported.

17 Ash Creek Wildlife Area, Wetland Enhancement, Phase II, Modoc County



Entrance to siphon under Ash Creek. Trash rack needs to be replaced, and ditch needs to be shored up.

17 Ash Creek Wildlife Area, Wetland Enhancement, Phase II, Modoc County



Supply ditch across northern portion of the Wildlife Area is nearly invisible in many places.

17 Ash Creek Wildlife Area, Wetland Enhancement, Phase II, Modoc County



The downcutting of the small swales that feed the Wildlife Area is severe but repairable.

17 Ash Creek Wildlife Area, Wetland Enhancement, Phase II, Modoc County



This shows the extent of the problem – many of the swales are impaired to this extent.

17 Ash Creek Wildlife Area, Wetland Enhancement, Phase II, Modoc County



A small existing wetland on the Wildlife Area shows how these swales can be restored.

17 Ash Creek Wildlife Area, Wetland Enhancement, Phase II, Modoc County






Location of the proposed parking area.

17 Ash Creek Wildlife Area, Wetland Enhancement, Phase II, Modoc County



Existing parking lot on the Wildlife Area is similar to that proposed for this project.

-  Proposed Project
-  Lake Earl, Pacific Shores
-  CA Dept of Parks and Recreation
-  National Park Service
-  USDA Forest Service
-  Dept of Fish and Game

Lake Earl Wildlife Area, Expansion 34



Lake Earl Wildlife Area, Expansion 34, Del Norte County

18 Lake Earl Wildlife Area, Expansion 34, Del Norte County



Looking southward at the subject property with the Easement Area shaded and outlined in orange

18 Lake Earl Wildlife Area, Expansion 34, Del Norte County



View from the Easement Area at dusk looking west into the Wildlife Area and Lake Earl

18 Lake Earl Wildlife Area, Expansion 34, Del Norte County



Seasonal creek running from east to west through the Easement before emptying into Lake Earl

19 San Jacinto Wildlife Area, Expansions 27 & 28, and Sale of State Land, Riverside County



Expansion 27

19 San Jacinto Wildlife Area, Expansions 27 & 28, and Sale of State Land, Riverside County



Expansion 27

19 San Jacinto Wildlife Area, Expansions 27 & 28, and Sale of State Land, Riverside County



Expansion 28

19 San Jacinto Wildlife Area, Expansions 27 & 28, and Sale of State Land, Riverside County



Expansion 28

19 San Jacinto Wildlife Area, Expansions 27 & 28, and Sale of State Land, Riverside County

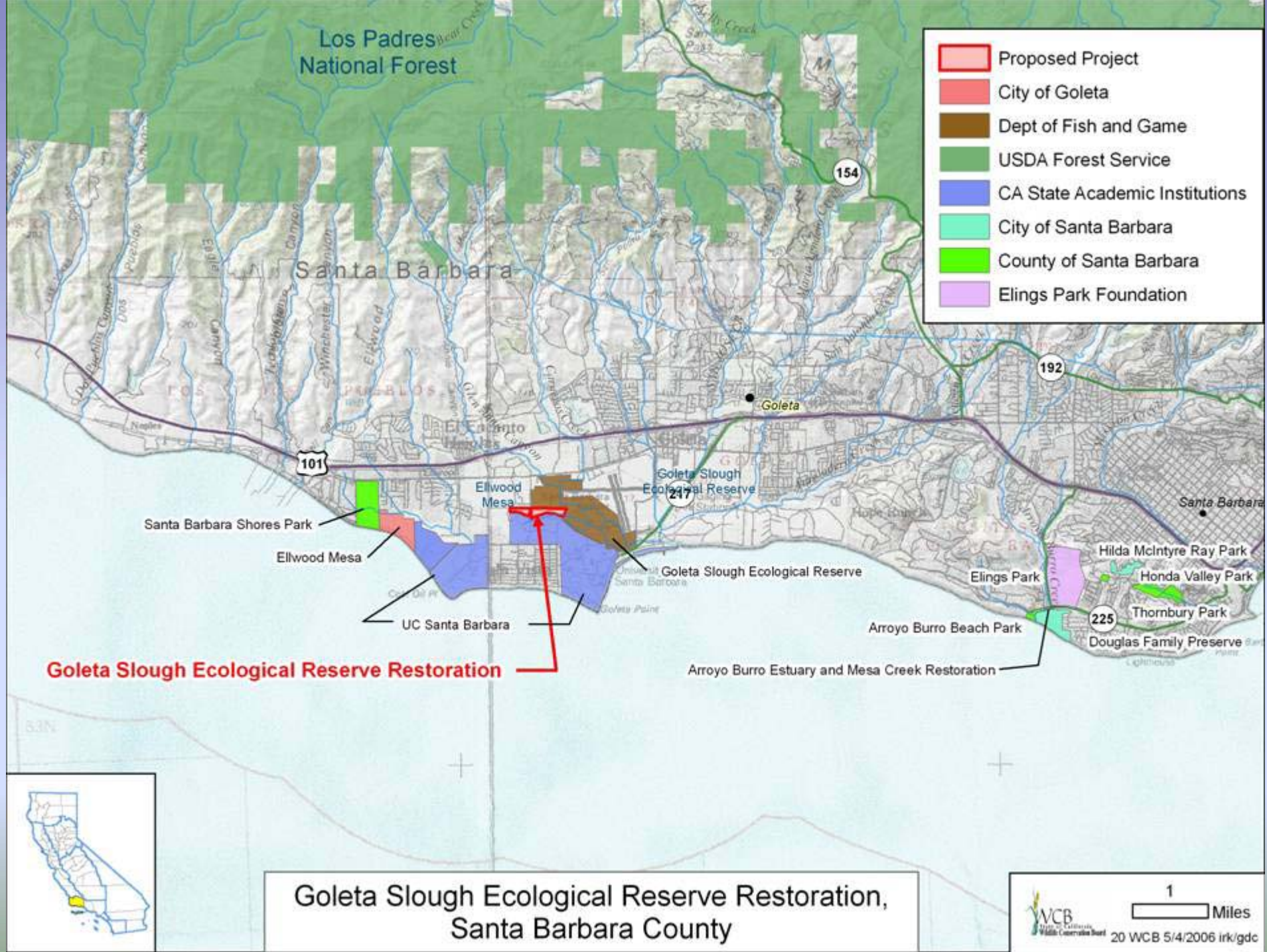


Sale of State Land

19 San Jacinto Wildlife Area, Expansions 27 & 28, and Sale of State Land, Riverside County



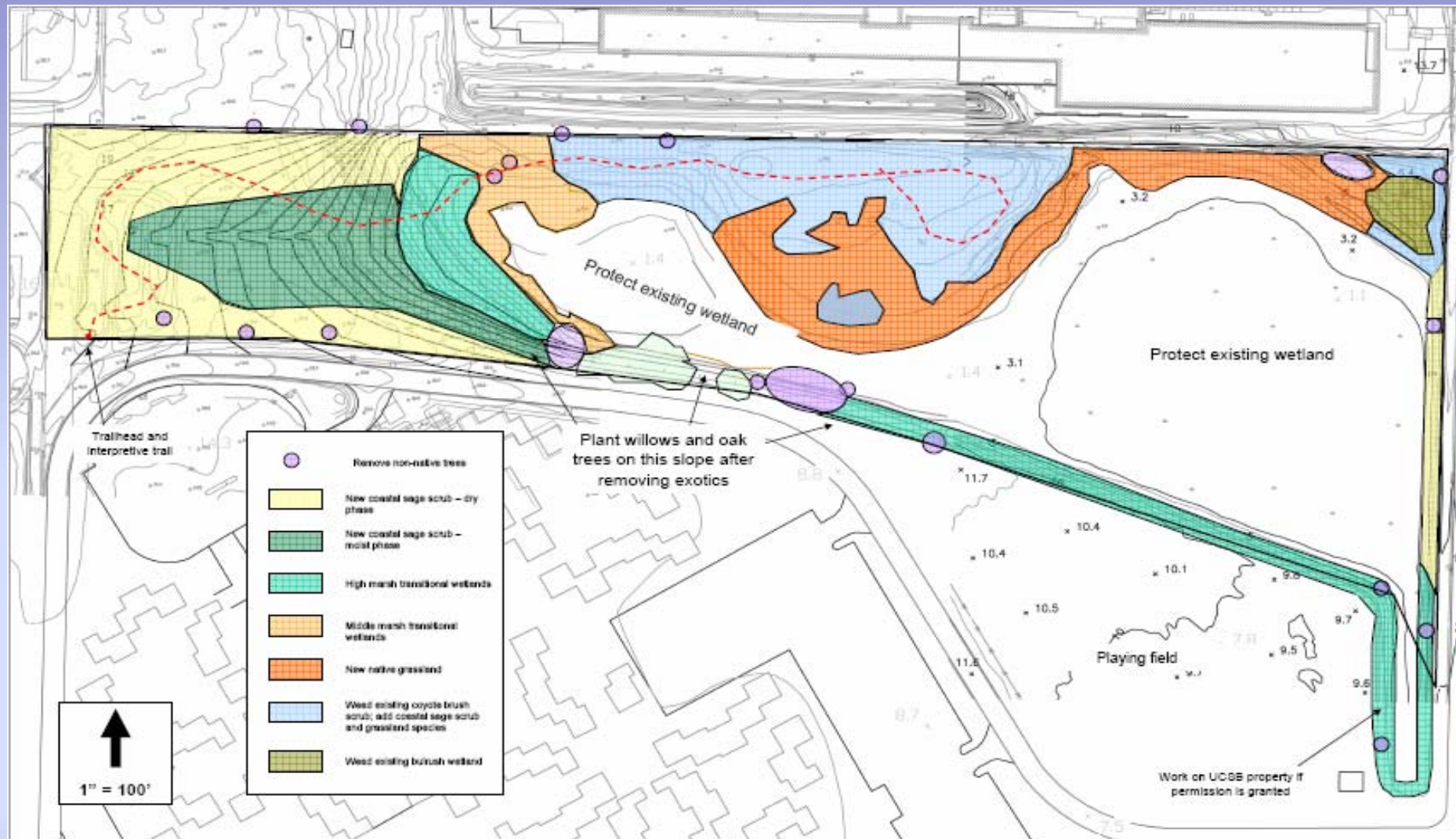
Sale of State Land



20 Goleta Slough Ecological Reserve Restoration, Santa Barbara County



20 Goleta Slough Ecological Reserve Restoration, Santa Barbara County



Revegetation Plan for CDFG West Site

20 Goleta Slough Ecological Reserve Restoration, Santa Barbara County



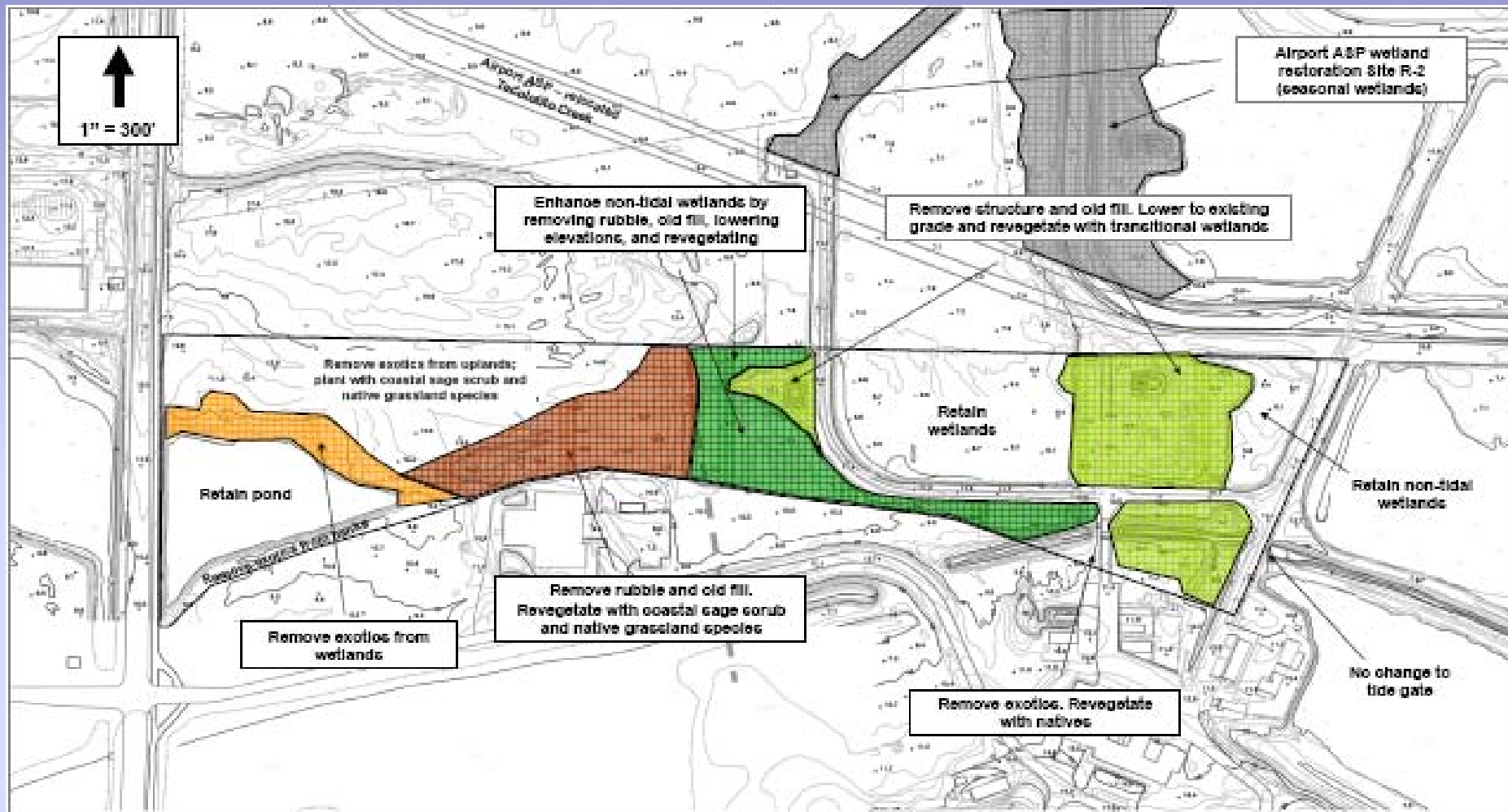
View of the center of the CDFG West site. View to the west.

20 Goleta Slough Ecological Reserve Restoration, Santa Barbara County



View of the pickleweed marsh at the west end of the site, looking to the east.

20 Goleta Slough Ecological Reserve Restoration, Santa Barbara County



Overall Revegetation Plan for CDFG East Site

20 Goleta Slough Ecological Reserve Restoration, Santa Barbara County



View of pond and freshwater marsh along the perimeter. View to the east.

20 Goleta Slough Ecological Reserve Restoration, Santa Barbara County



View of Mesa Ditch west of the tide gate and pump house.

20 Goleta Slough Ecological Reserve Restoration, Santa Barbara County



View of pond and freshwater marsh along the perimeter. View to the west.

21 San Joaquin River Parkway, Sycamore Island Fishing Access, Madera County



San Joaquin River Conservancy, Sycamore Island Fishing Access

21 San Joaquin River Parkway, Sycamore Island Fishing Access, Madera County



Picnic tables will be added to the area to enhance the experience.

21 San Joaquin River Parkway, Sycamore Island Fishing Access, Madera County



Signage, restrooms and traffic controls will be important components of this project.

21 San Joaquin River Parkway, Sycamore Island Fishing Access, Madera County



Volunteers will remove some abandoned buildings on the site.

22 Grassland Environmental Education Center Relocation and Set-up, Merced County



Grassland Environmental Education Center at its current location on private property.

22 Grassland Environmental Education Center Relocation and Set-up, Merced County



Interior view of Center showing lab tables and displays.

22 Grassland Environmental Education Center Relocation and Set-up, Merced County

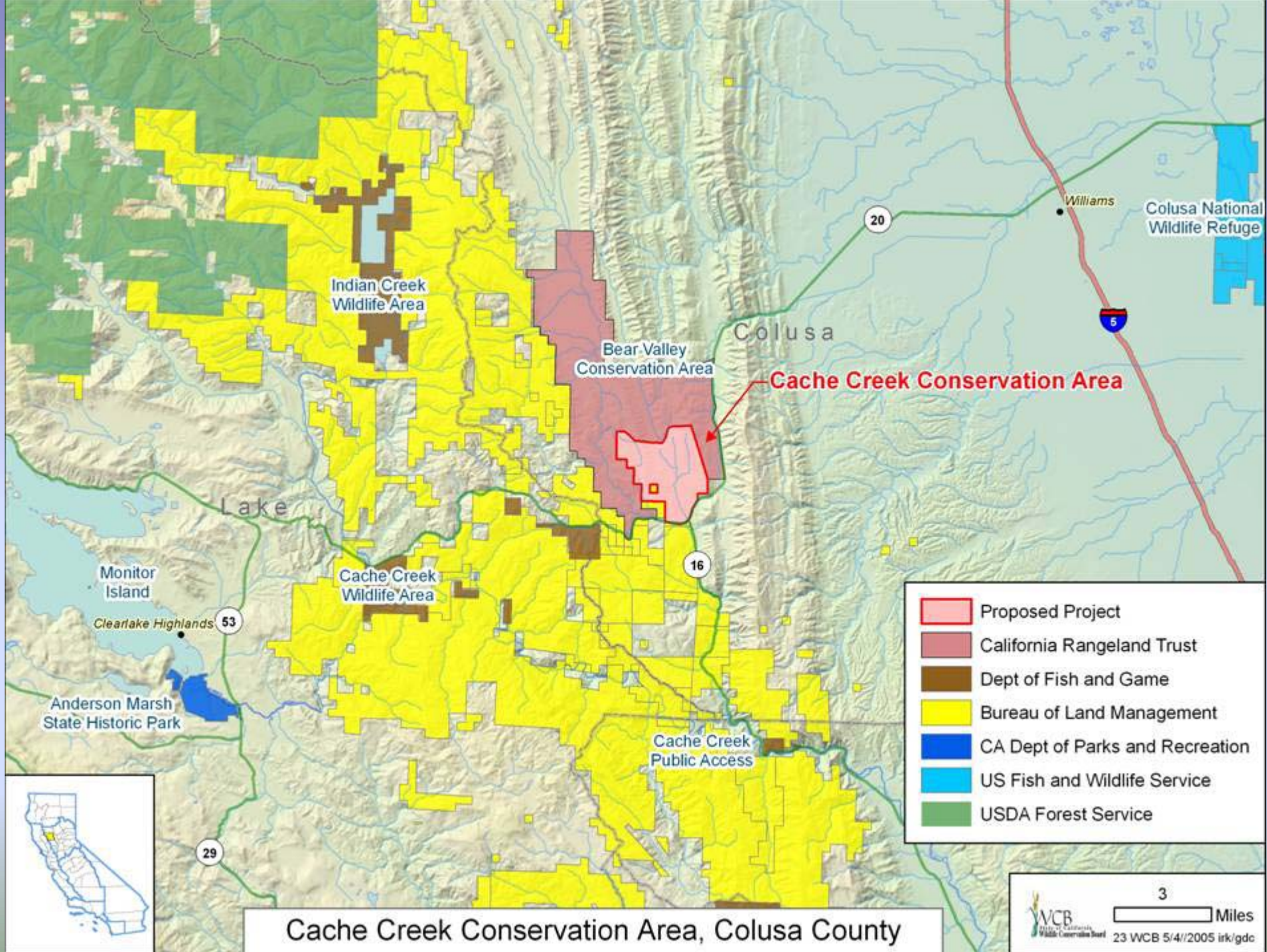


Grade school class inside the Center.

22 Grassland Environmental Education Center Relocation and Set-up, Merced County



A wetland tour and collecting class at the Center.



Cache Creek Conservation Area, Colusa County

23 Cache Creek Conservation Area, Colusa County



Looking towards Highway 20 from property

23 Cache Creek Conservation Area, Colusa County



Watering hole on property

23 Cache Creek Conservation Area, Colusa County



Wild pigs on property

23 Cache Creek Conservation Area, Colusa County



Rolling hills

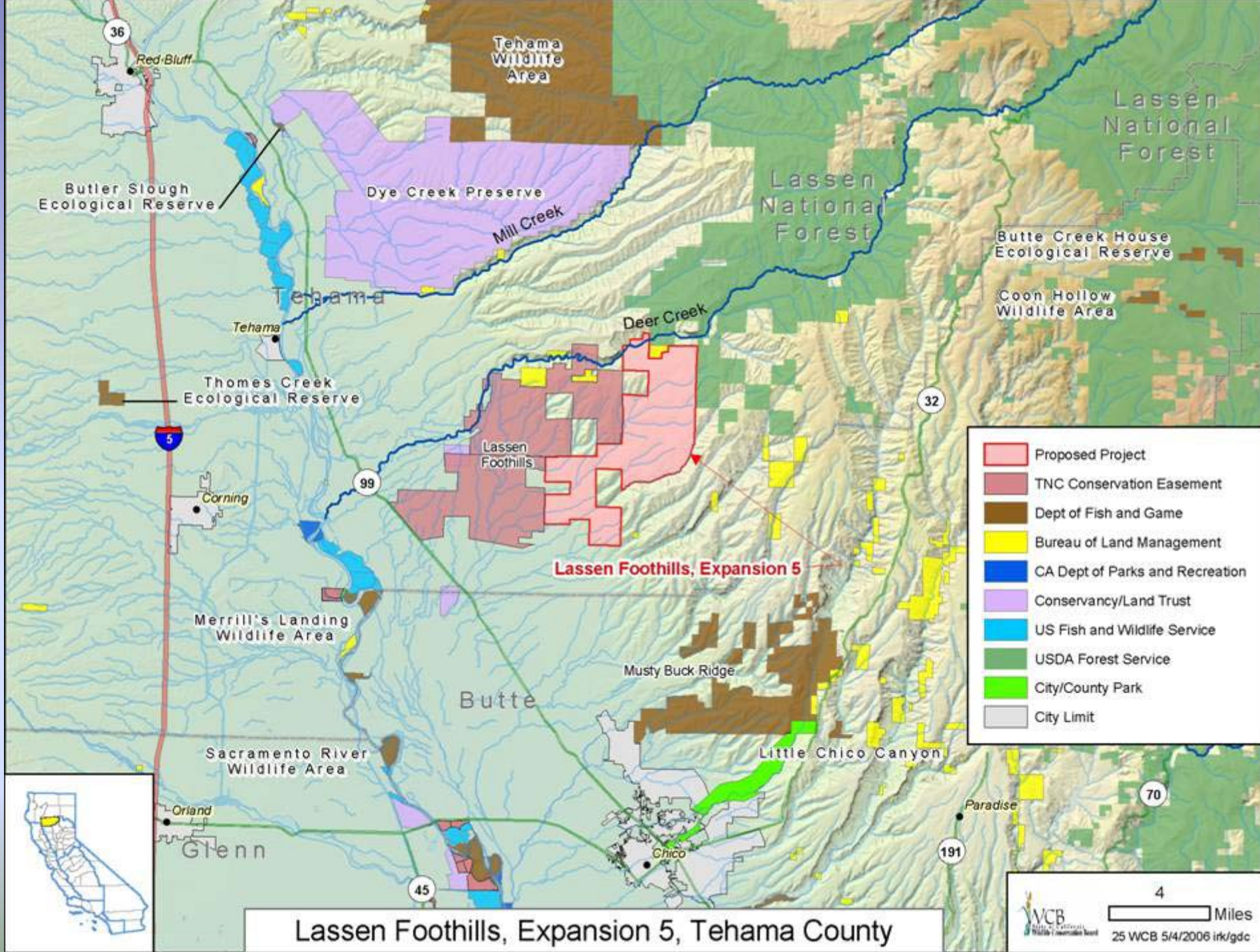
23 Cache Creek Conservation Area, Colusa County



Oak Woodlands on property

24 Yolo County Riparian Restoration (CREP), Yolo County

Withdrawn from consideration at this time.



25 Lassen Foothills, Expansion 5, Tehama County



25 Lassen Foothills, Expansion 5, Tehama County



25 Lassen Foothills, Expansion 5, Tehama County



26 Ridgewood Ranch Conservation Area, Mendocino County



Ridgetop View

26 Ridgewood Ranch Conservation Area, Mendocino County



Seabiscuit's Stud Barn

26 Ridgewood Ranch Conservation Area, Mendocino County



White Deer

26 Ridgewood Ranch Conservation Area, Mendocino County



Oak Woodlands

27 Six Rivers, Expansion 1 (Price Creek Ranch), Humboldt County



27 Six Rivers, Expansion 1 (Price Creek Ranch), Humboldt County

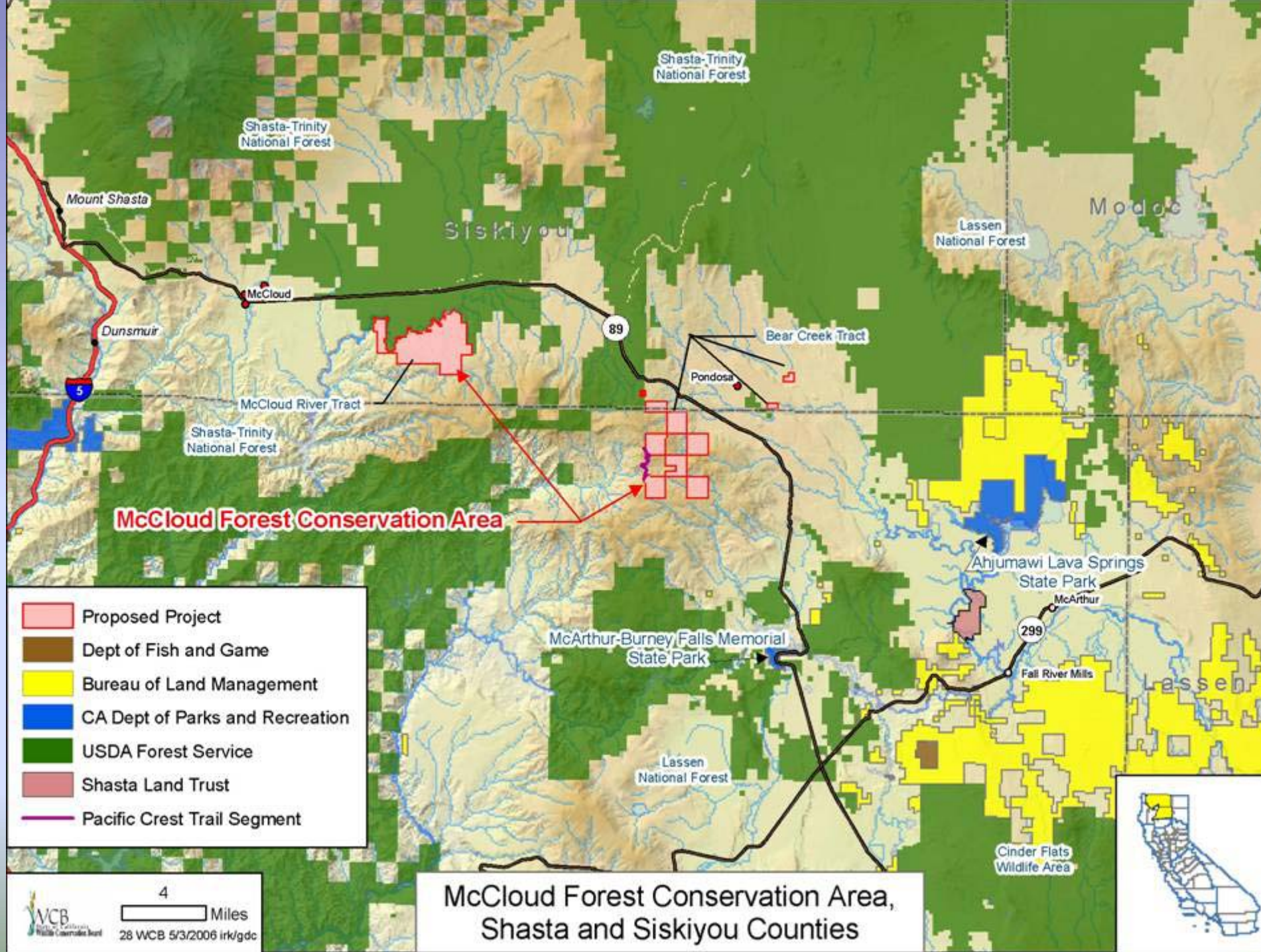


27 Six Rivers, Expansion 1 (Price Creek Ranch), Humboldt County



27 Six Rivers, Expansion 1 (Price Creek Ranch), Humboldt County





28 McCloud Forest Conservation Area, Shasta and Siskiyou Counties



McCloud River, just above Upper McCloud River Falls

28 McCloud Forest Conservation Area, Shasta and Siskiyou Counties



View of Mt. Shasta from McCloud River overlook

28 McCloud Forest Conservation Area, Shasta and Siskiyou Counties



Transition from meadow to mixed conifer along the mainstem of Bear Creek at the Long Ranch

28 McCloud Forest Conservation Area, Shasta and Siskiyou Counties



Bear Creek, sole spawning tributary for the world famous Fall River trout fishery

28 McCloud Forest Conservation Area, Shasta and Siskiyou Counties



Aspen grove and rare wet meadows in Stick Rock Meadow

28 McCloud Forest Conservation Area, Shasta and Siskiyou Counties



Fallen incense cedar trunk in Stick Rock Meadow

28 McCloud Forest Conservation Area, Shasta and Siskiyou Counties



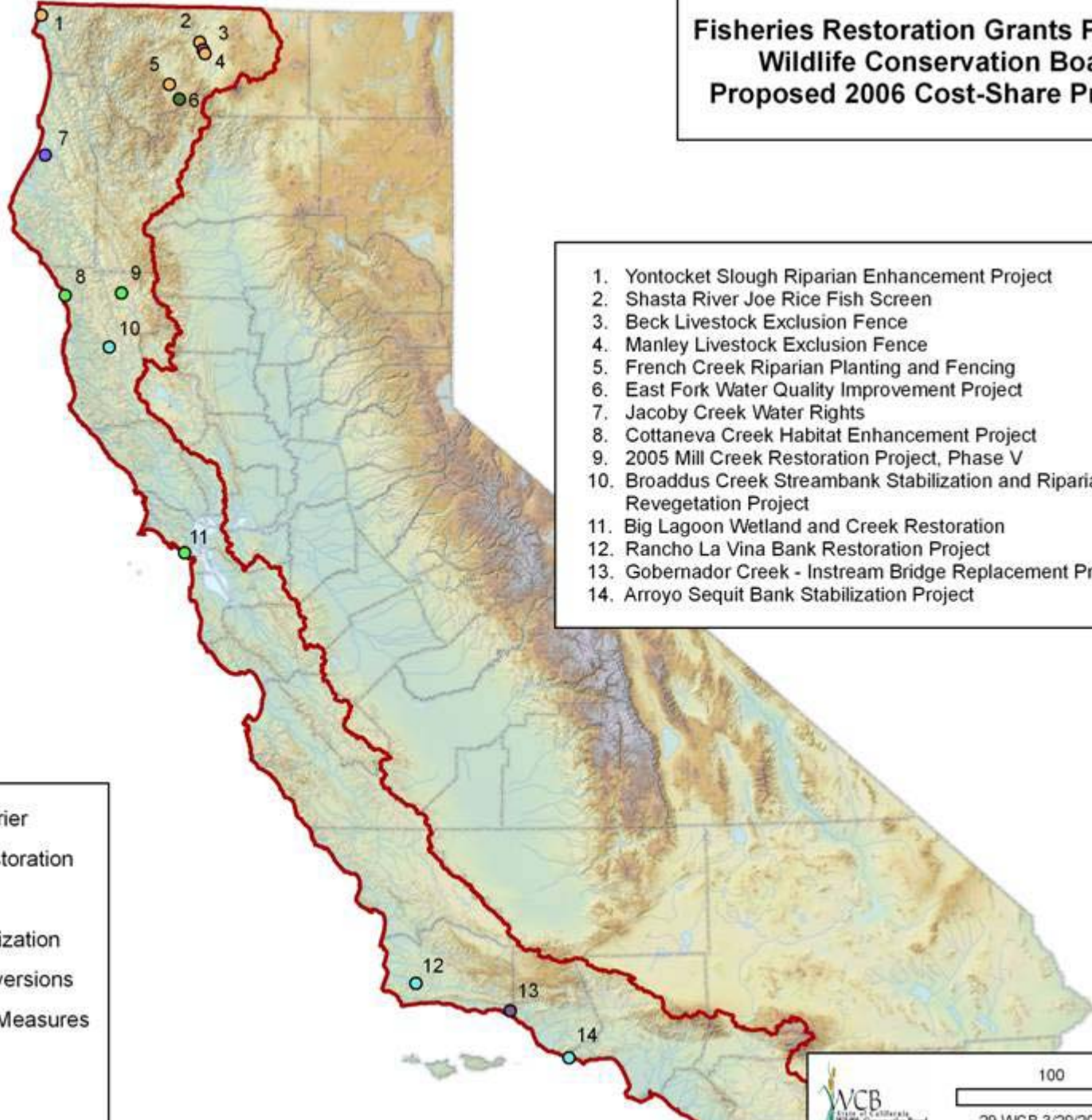
Aspen grove and rare wet meadows in the Angel Meadow

28 McCloud Forest Conservation Area, Shasta and Siskiyou Counties



Beaver pond and den in Bigelow Gulch

Fisheries Restoration Grants Program Wildlife Conservation Board Proposed 2006 Cost-Share Projects



1. Yontocket Slough Riparian Enhancement Project
2. Shasta River Joe Rice Fish Screen
3. Beck Livestock Exclusion Fence
4. Manley Livestock Exclusion Fence
5. French Creek Riparian Planting and Fencing
6. East Fork Water Quality Improvement Project
7. Jacoby Creek Water Rights
8. Cottaneva Creek Habitat Enhancement Project
9. 2005 Mill Creek Restoration Project, Phase V
10. Broadus Creek Streambank Stabilization and Riparian Revegetation Project
11. Big Lagoon Wetland and Creek Restoration
12. Rancho La Vina Bank Restoration Project
13. Gobernador Creek - Instream Bridge Replacement Project
14. Arroyo Sequit Bank Stabilization Project

- Instream Habitat Barrier
- Instream Habitat Restoration
- Riparian Restoration
- Instream Bank Stabilization
- Fish Screening of Diversions
- Water Conservation Measures
- Water Purchase

 FRGP Scope



100 Miles

29 WCB 3/29/2006 irk/gdc

29 California Fisheries Restoration 2006, Del Norte, Humboldt,
Los Angeles, Marin, Mendocino, Santa Barbara and Siskiyou Counties



Eroded bank prior to restoration

29 California Fisheries Restoration 2006, Del Norte, Humboldt, Los Angeles, Marin, Mendocino, Santa Barbara and Siskiyou Counties



Eroded bank during repair work

29 California Fisheries Restoration 2006, Del Norte, Humboldt, Los Angeles, Marin, Mendocino, Santa Barbara and Siskiyou Counties



Eroded bank following repair work and seeding

29 California Fisheries Restoration 2006, Del Norte, Humboldt, Los Angeles, Marin, Mendocino, Santa Barbara and Siskiyou Counties

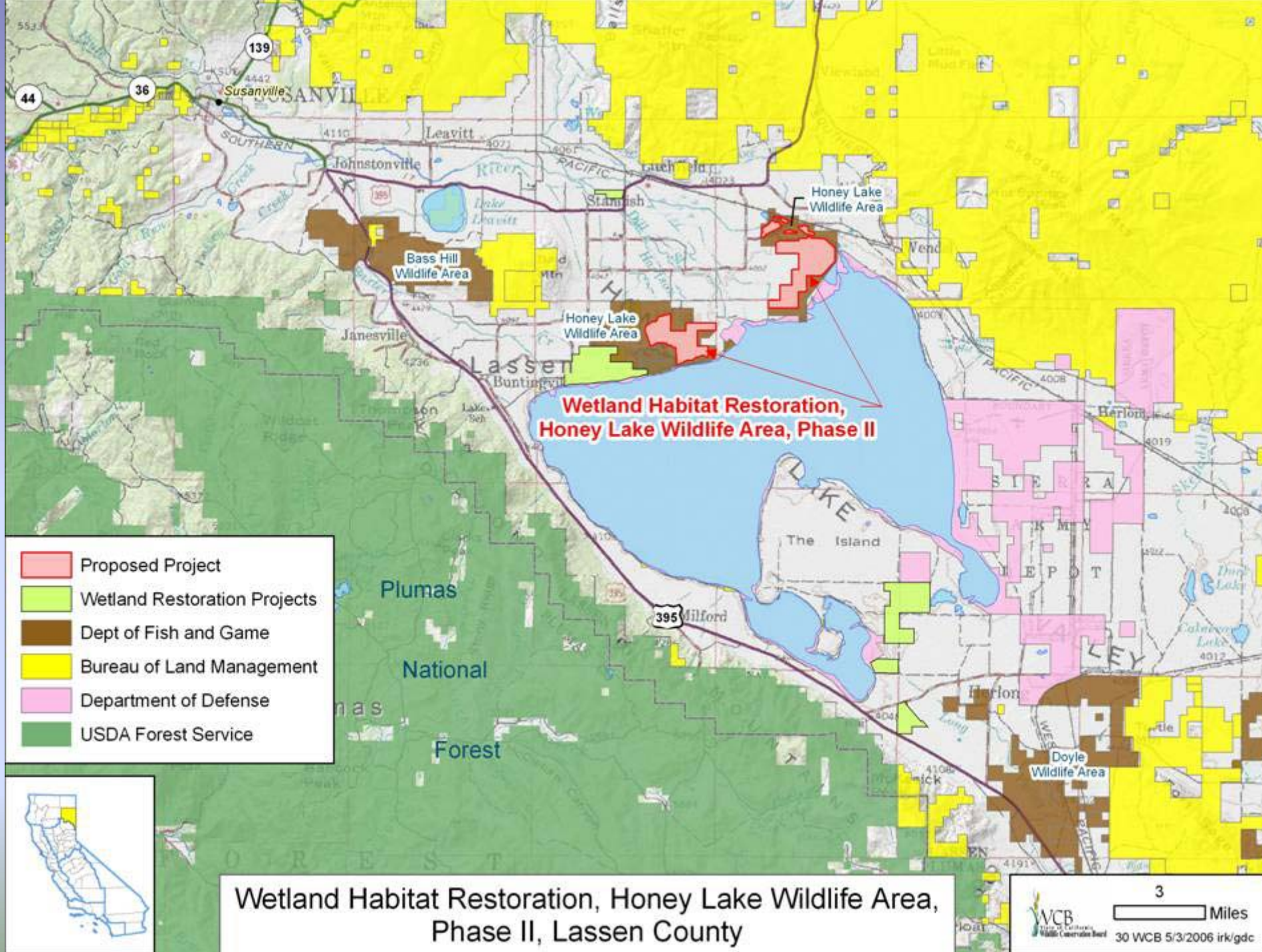


Culvert fish barrier prior to restoration

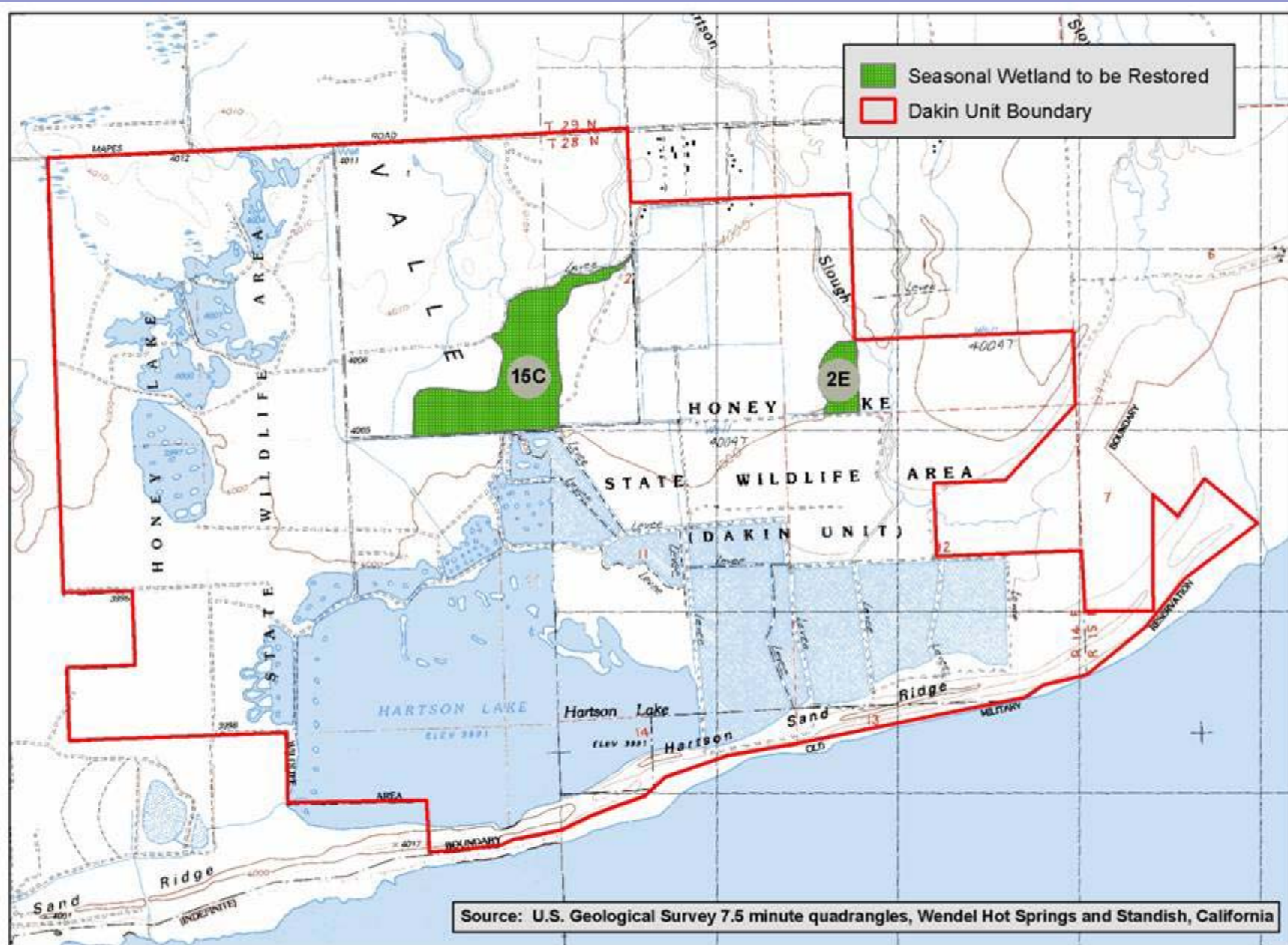
29 California Fisheries Restoration 2006, Del Norte, Humboldt,
Los Angeles, Marin, Mendocino, Santa Barbara and Siskiyou Counties



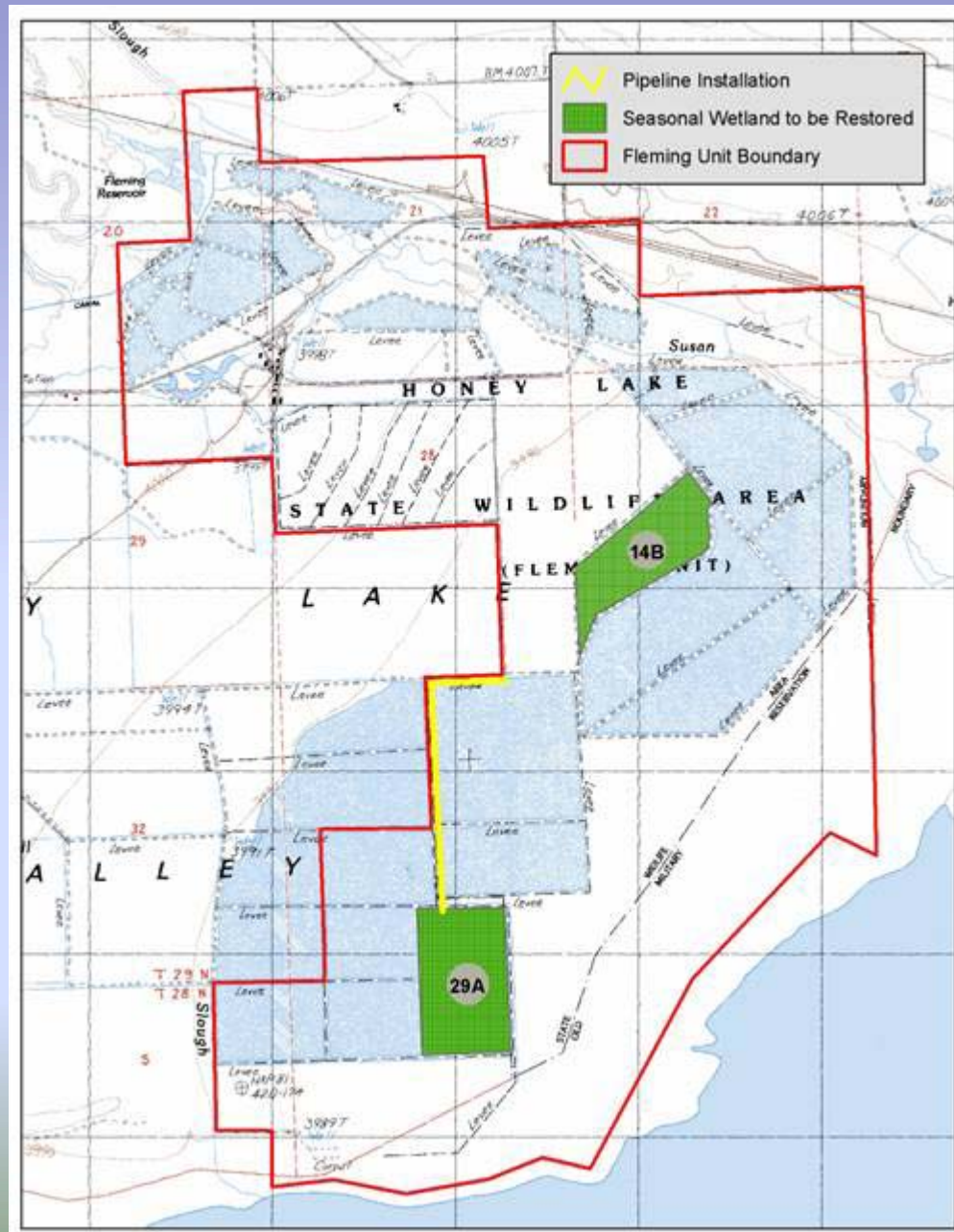
Culvert after repairs; now will allow fish passage



30 Wetland Habitat Restoration, Honey Lake Wildlife Area, Phase II, Lassen County



30 Wetland Habitat Restoration, Honey Lake Wildlife Area, Phase II, Lassen County



30 Wetland Habitat Restoration, Honey Lake Wildlife Area, Phase II, Lassen County



Field 2E at the Dakin Unit where seasonal wetland habitat will be restored.

30 Wetland Habitat Restoration, Honey Lake Wildlife Area, Phase II, Lassen County



Field 15C at the Dakin Unit where seasonal wetland habitat will be restored.

30 Wetland Habitat Restoration, Honey Lake Wildlife Area, Phase II, Lassen County



Restored seasonal wetland on the Honey Lake Wildlife Area

30 Wetland Habitat Restoration, Honey Lake Wildlife Area, Phase II, Lassen County



Pronghorns are common on the upland and agricultural lands on the Wildlife Area