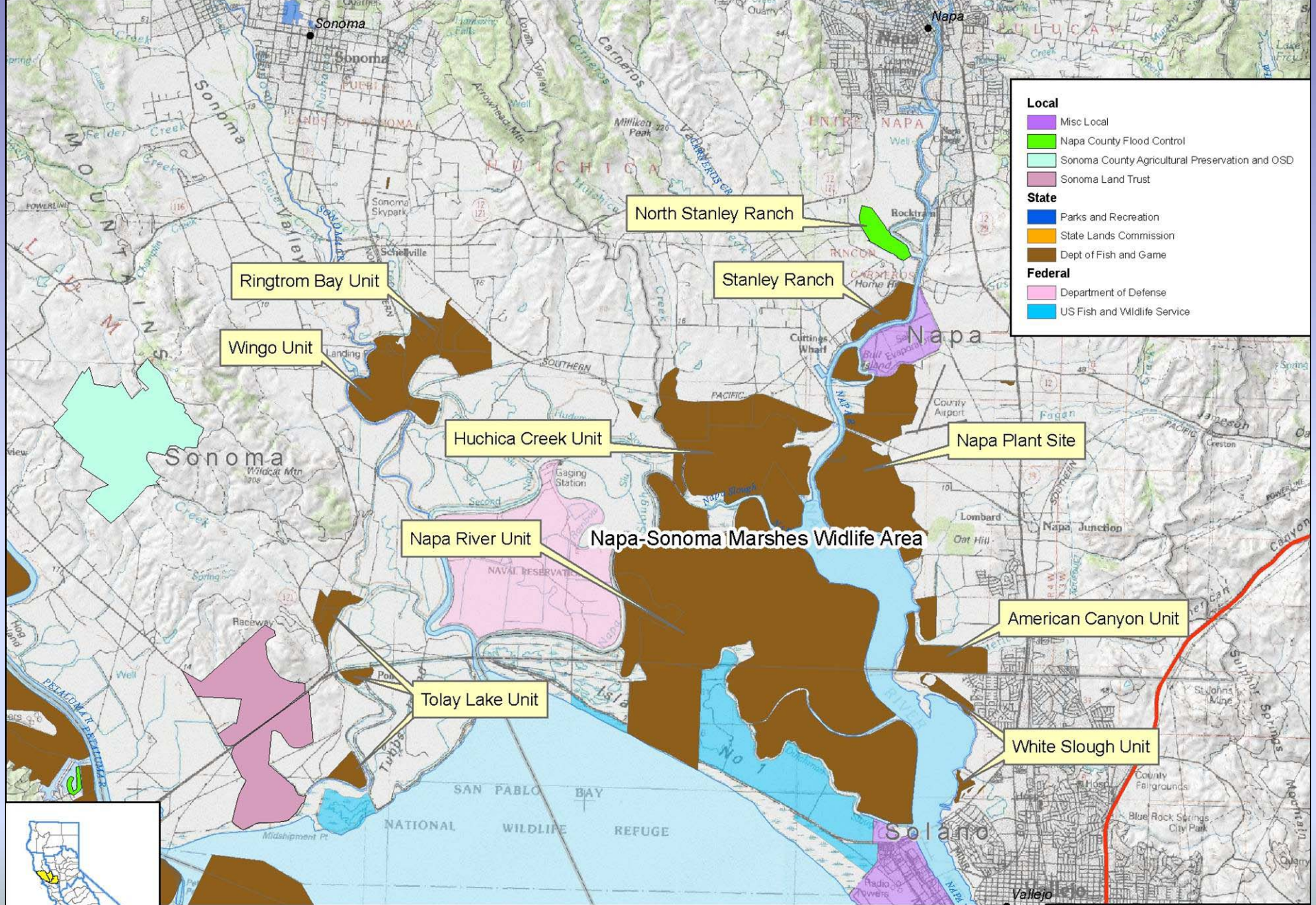


Eagle Lake, Spaulding Tract Boat Ramp,
Lassen County

November 16, 2006 WCB Board Meeting
State Capitol, Room 4203
Sacramento, California 95814





DFG Land Management Plans, Central Coast Region, Phase II, Napa, Sonoma and Solano Counties

DFG Land Management Plans, Central Coast Region, Phase II, Napa,
Sonoma, Solano and San Luis Obispo Counties



Tolay Creek Unit

DFG Land Management Plans, Central Coast Region, Phase II, Napa,
Sonoma, Solano and San Luis Obispo Counties



Huichica Creek Unit, Coon Island

DFG Land Management Plans, Central Coast Region, Phase II, Napa, Sonoma, Solano and San Luis Obispo Counties

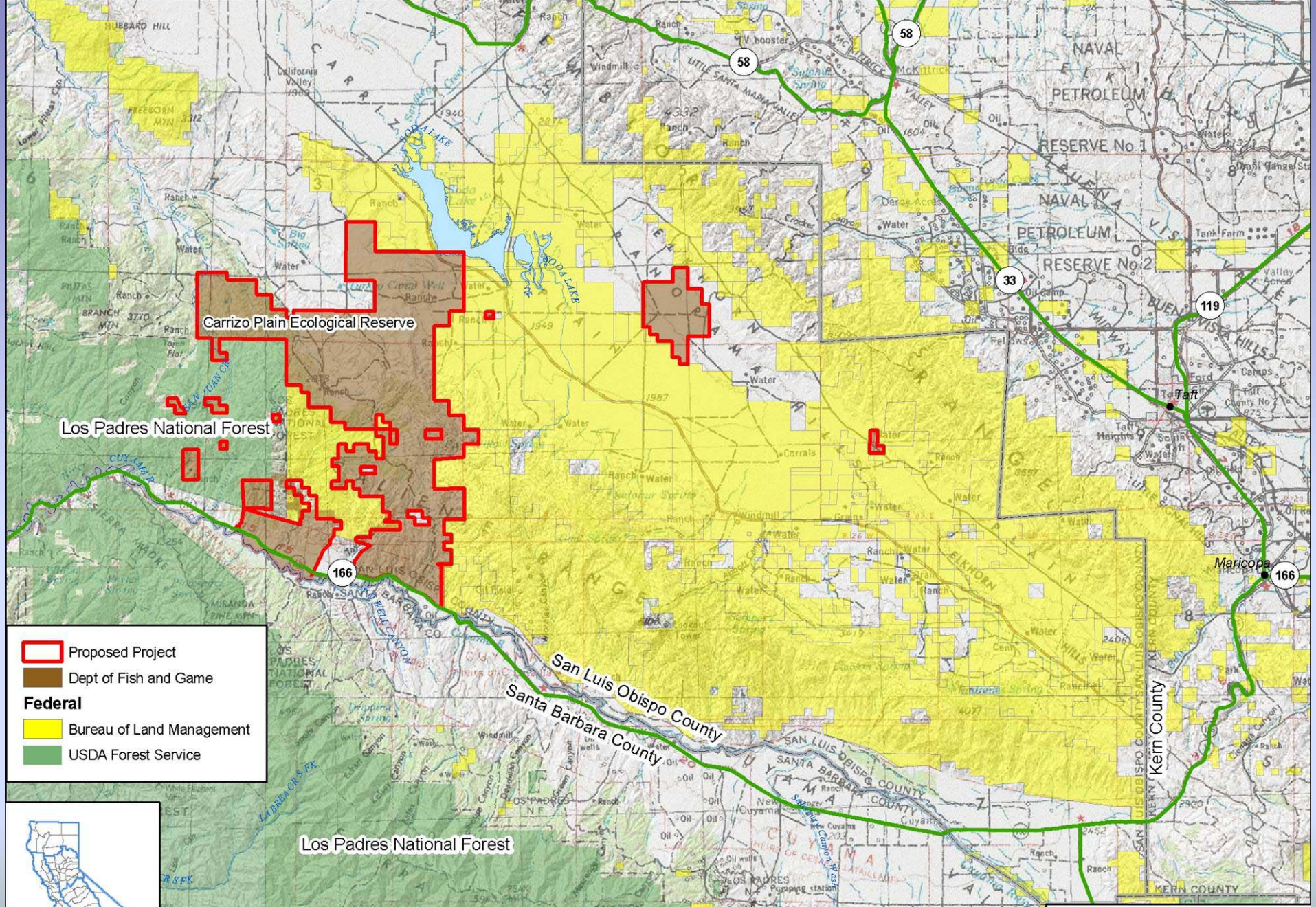


Napa River Unit

DFG Land Management Plans, Central Coast Region, Phase II, Napa, Sonoma, Solano and San Luis Obispo Counties



Ringstrom Bay Unit



Proposed Project

Dept of Fish and Game

Federal

- Bureau of Land Management
- USDA Forest Service



Dept. of Fish and Game Land Management Plans,
 Central Coast Region, Phase II, San Luis Obispo County

2.5 Miles

WCB
 State of California
 Wildlife Conservation Board
 06 WCB 10/20/2006 gdc

DFG Land Management Plans, Central Coast Region, Phase II, Napa, Sonoma, Solano
and San Luis Obispo Counties



Aerial photo of Chimineas Ranch Unit

DFG Land Management Plans, Central Coast Region, Phase II, Napa, Sonoma, Solano
and San Luis Obispo Counties



Broken Dam Lake

DFG Land Management Plans, Central Coast Region, Phase II, Napa, Sonoma, Solano
and San Luis Obispo Counties

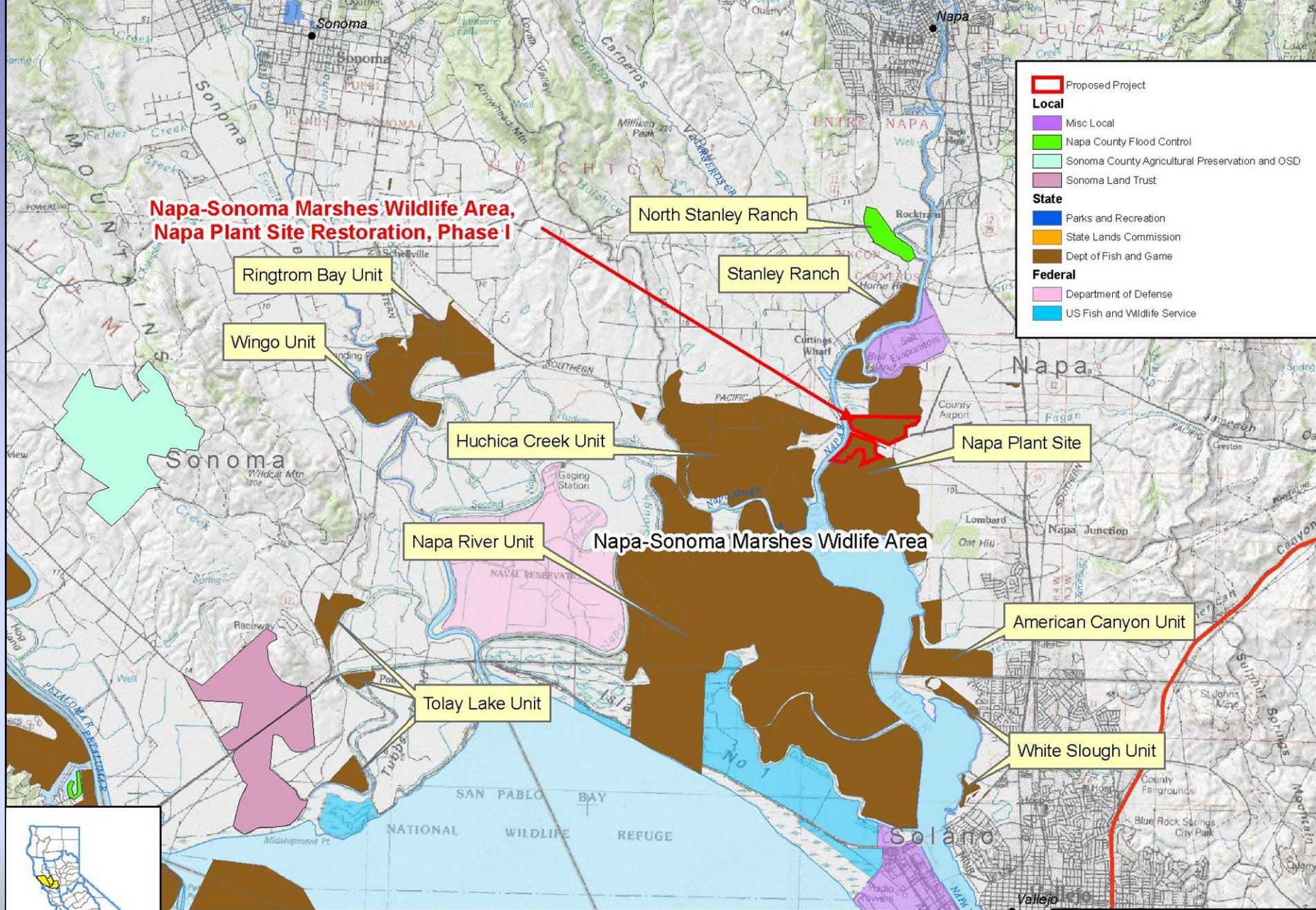


Oak woodland habitats

DFG Land Management Plans, Central Coast Region, Phase II, Napa, Sonoma, Solano
and San Luis Obispo Counties



bull tule elk on Carrizo Plain American Unit



**Napa-Sonoma Marshes Wildlife Area,
Napa Plant Site Restoration, Phase I**

- Proposed Project
- Local**
- Misc Local
- Napa County Flood Control
- Sonoma County Agricultural Preservation and OSD
- Sonoma Land Trust
- State**
- Parks and Recreation
- State Lands Commission
- Dept of Fish and Game
- Federal**
- Department of Defense
- US Fish and Wildlife Service

Napa-Sonoma Marshes WA, Napa Plant Site Restoration,
Phase I, Napa County

Napa-Sonoma Marshes Wildlife Area, Napa Plant Site Restoration, Napa County



Northeastern corner of pond 10 (looking southwest)

Napa-Sonoma Marshes Wildlife Area, Napa Plant Site Restoration, Napa County



Northwestern corner of pond 9 (looking south)

Napa-Sonoma Marshes Wildlife Area, Napa Plant Site Restoration, Napa County

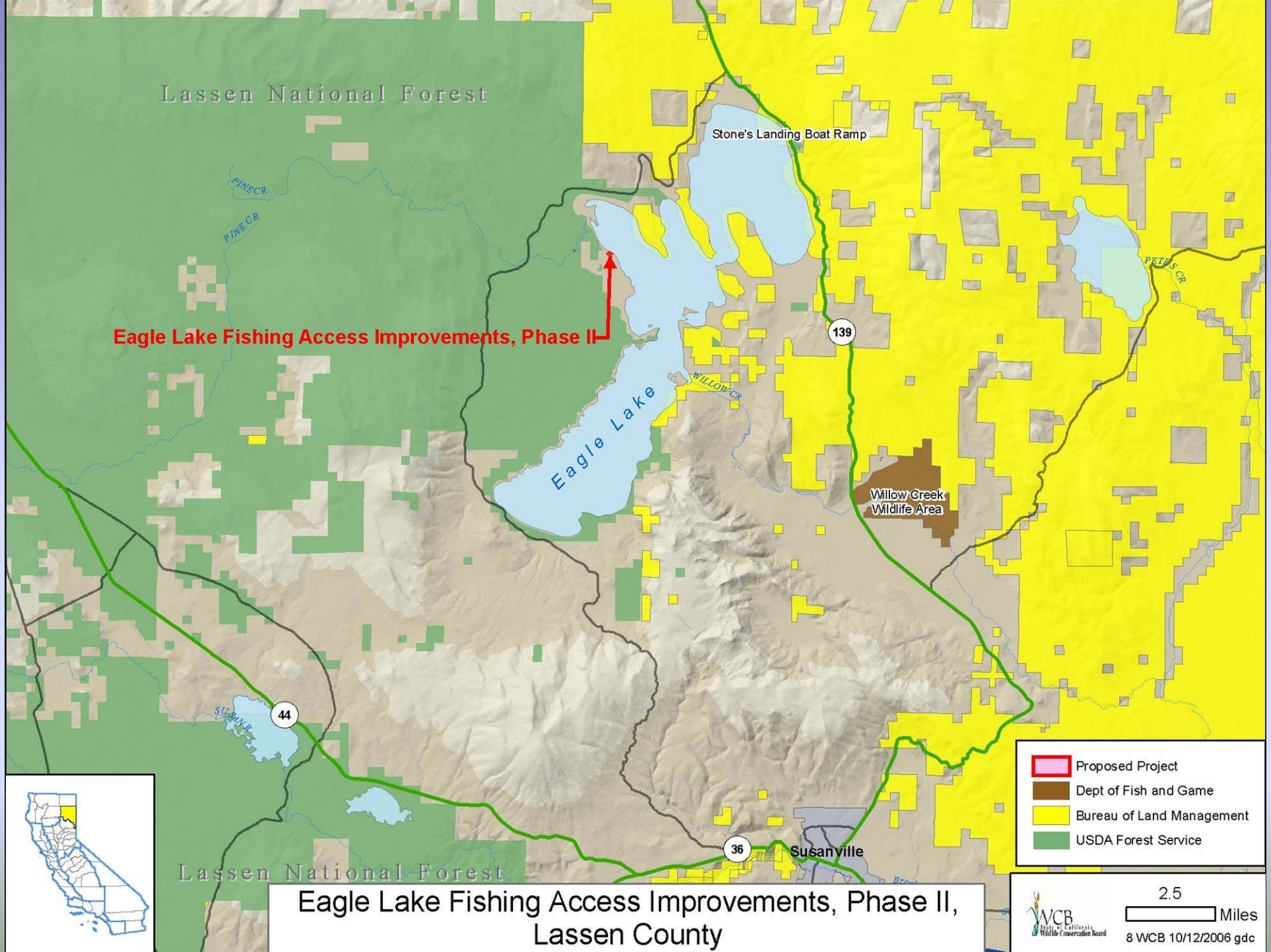


Seasonal wetland habitats (looking northeast)

Napa-Sonoma Marshes Wildlife Area, Napa Plant Site Restoration, Napa County



Aerial view of wash pond area of Phase 1 Restoration



Lassen National Forest

Stone's Landing Boat Ramp

Eagle Lake Fishing Access Improvements, Phase II

Eagle Lake

Willow Creek Wildlife Area

139

44

36

Susanville

Lassen National Forest

- Proposed Project
- Dept of Fish and Game
- Bureau of Land Management
- USDA Forest Service



Eagle Lake Fishing Access Improvements, Phase II,
Lassen County

2.5
Miles

8 WCB 10/12/2006 gdc

Eagle Lake Fishing Access Improvements, Phase II, Lassen County



A 32-foot section of dock will be added to get the public courtesy mooring into deeper water.

Eagle Lake Fishing Access Improvements, Phase II, Lassen County

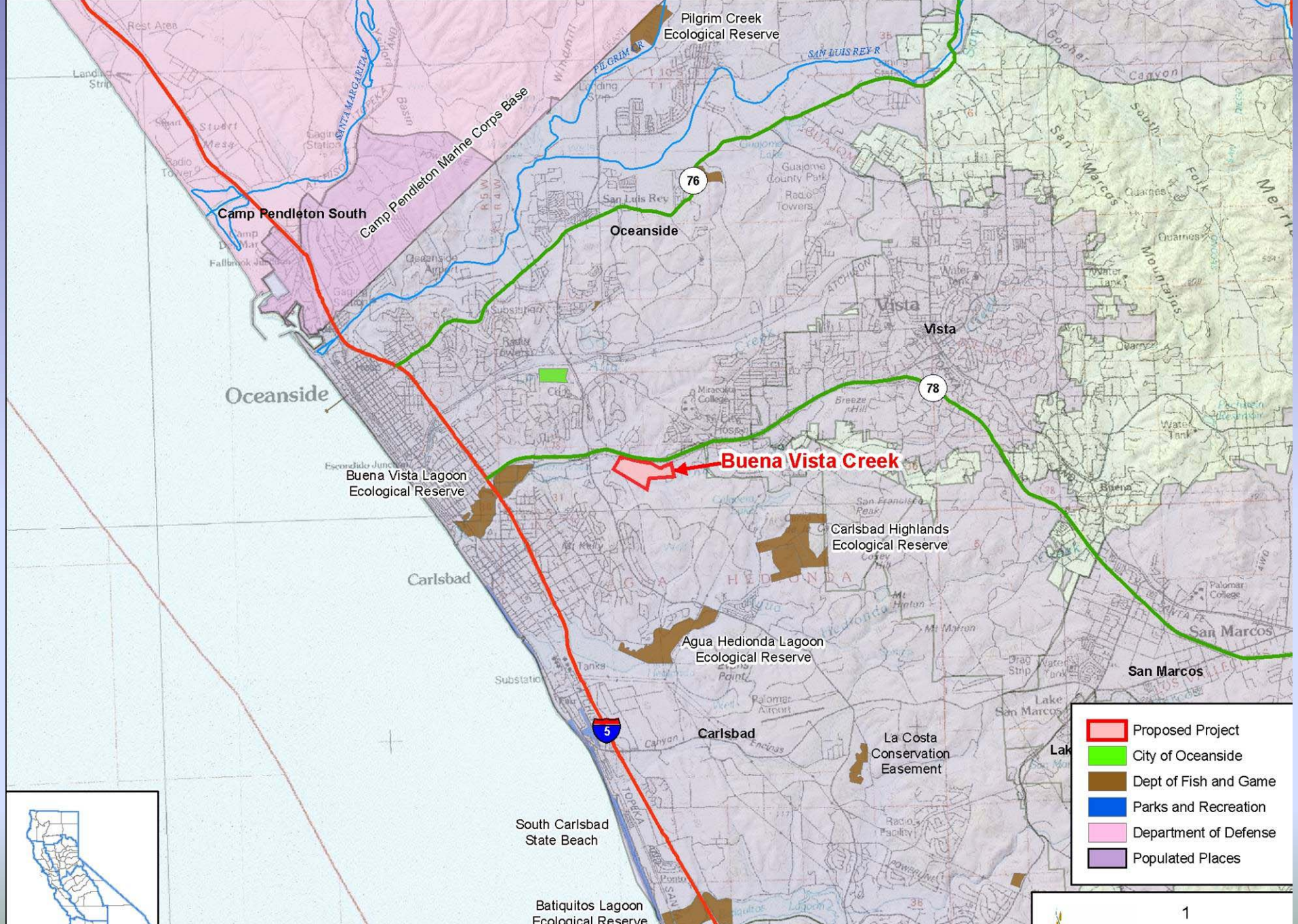


The north ramp will be extended 8.5 feet and dredged to facilitate boat launching in low water conditions.

Eagle Lake Fishing Access Improvements, Phase II, Lassen County



Railing will be added to these ramps to comply the Americans with Disabilities Act.



- Proposed Project
- City of Oceanside
- Dept of Fish and Game
- Parks and Recreation
- Department of Defense
- Populated Places



Buena Vista Creek, San Diego County

1
Miles

9 WCB 10/12/2006 gdc

Buena Vista Creek, San Diego County



Key reach of Buena Vista Creek

Buena Vista Creek, San Diego County



Artesian pond just south of Buena Vista Creek

Buena Vista Creek, San Diego County

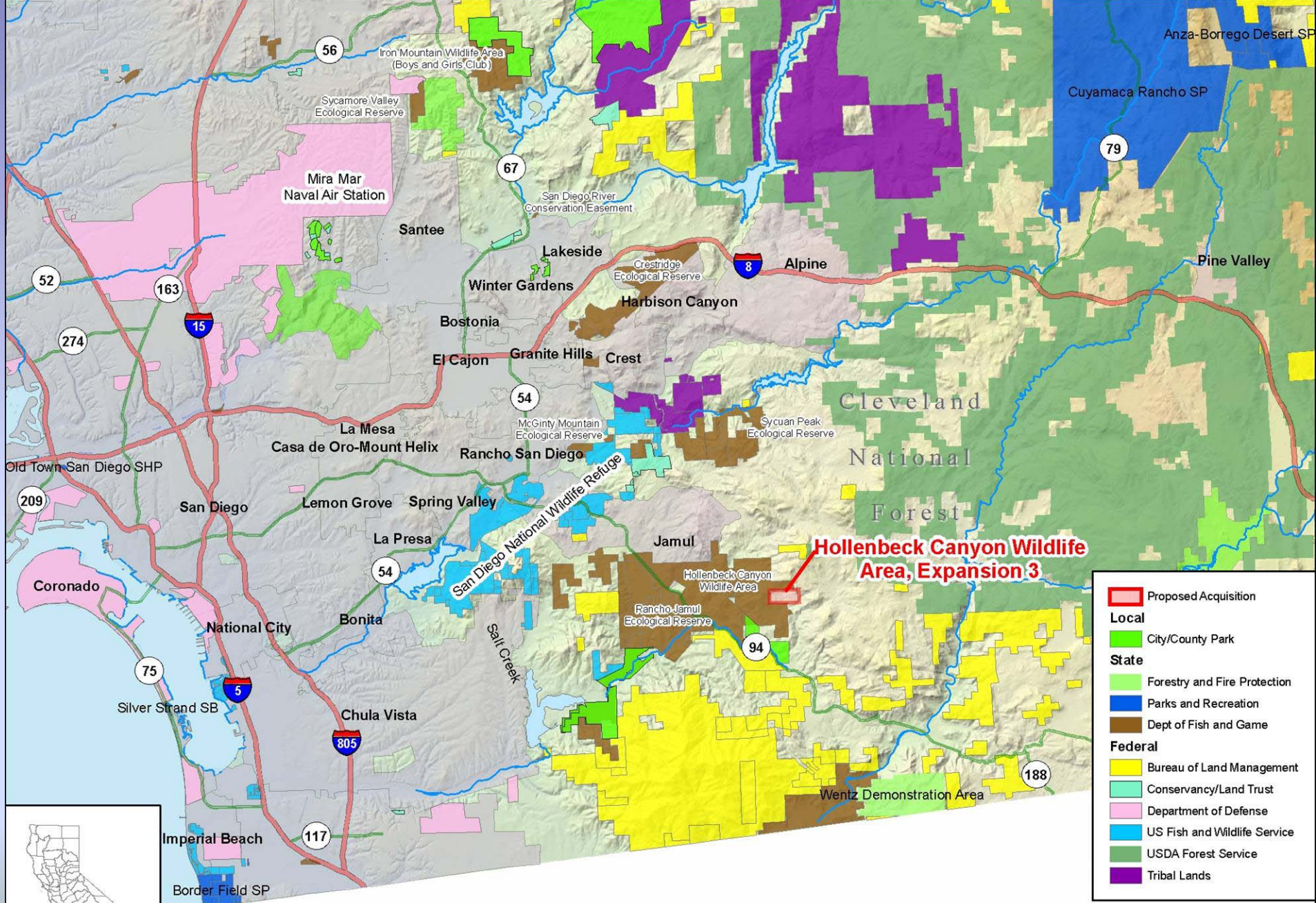


Coastal California gnatcatcher

Buena Vista Creek, San Diego County



least Bell's vireo



Hollenbeck Canyon Wildlife Area, Expansion 3, San Diego County

Hollenbeck Canyon Wildlife Area, Expansion 3, San Diego County



A wildlife movement corridor, the property provides habitat for sensitive species including orange-throated whiptail, northern red diamond rattlesnake, and California gnatcatcher

Hollenbeck Canyon Wildlife Area, Expansion 3, San Diego County



California gnatcatcher

Hollenbeck Canyon Wildlife Area, Expansion 3, San Diego County



© 2004 Dick Bartlett

Orange-throated whiptail

Hollenbeck Canyon Wildlife Area, Expansion 3, San Diego County

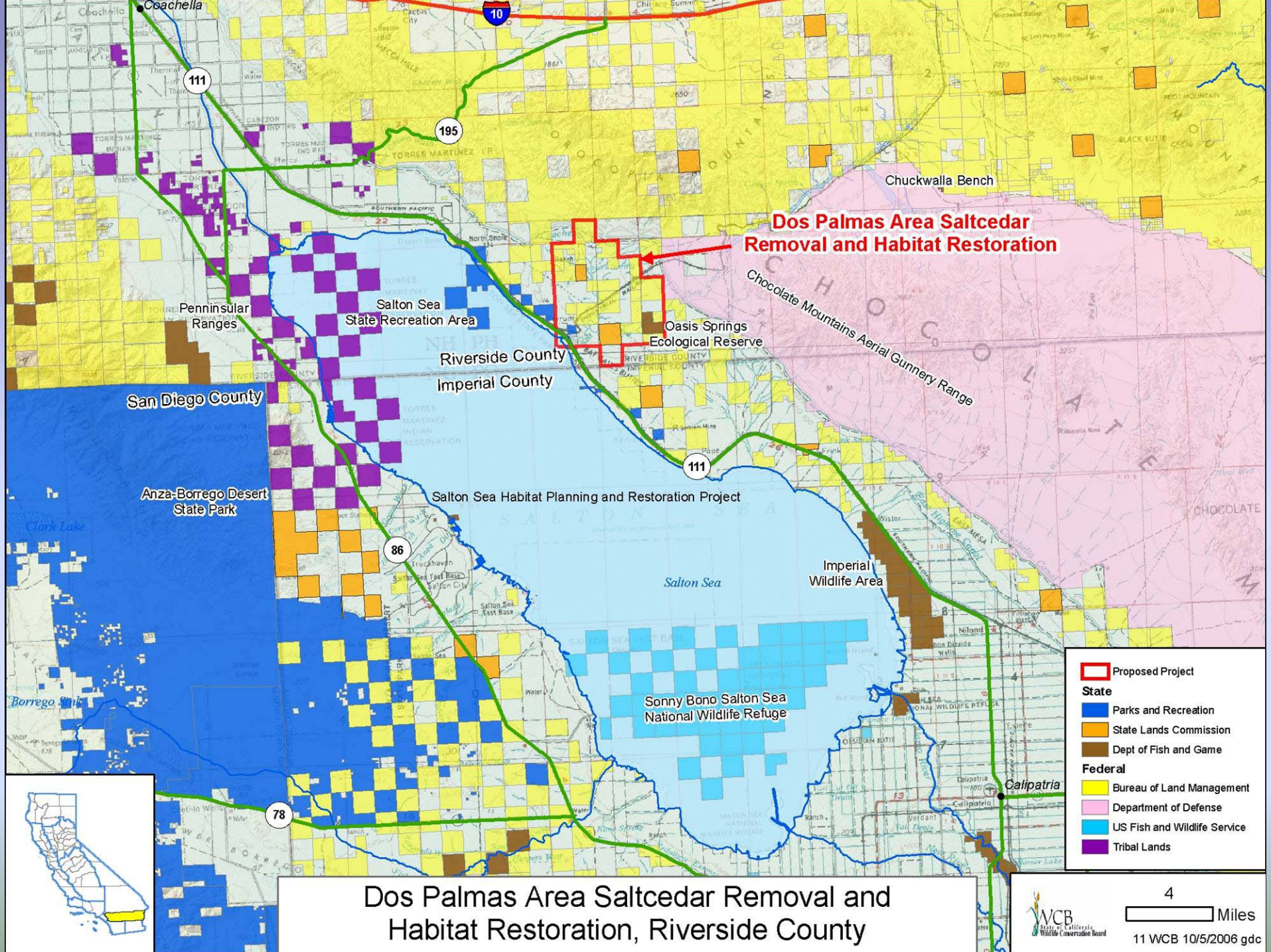
A1930



Euphydryas editha quino ♂ Otay Mtn., San Diego Co., CA, USA 15-III-05

© 2005 Doug Aguillard

Quino checkerspot butterfly



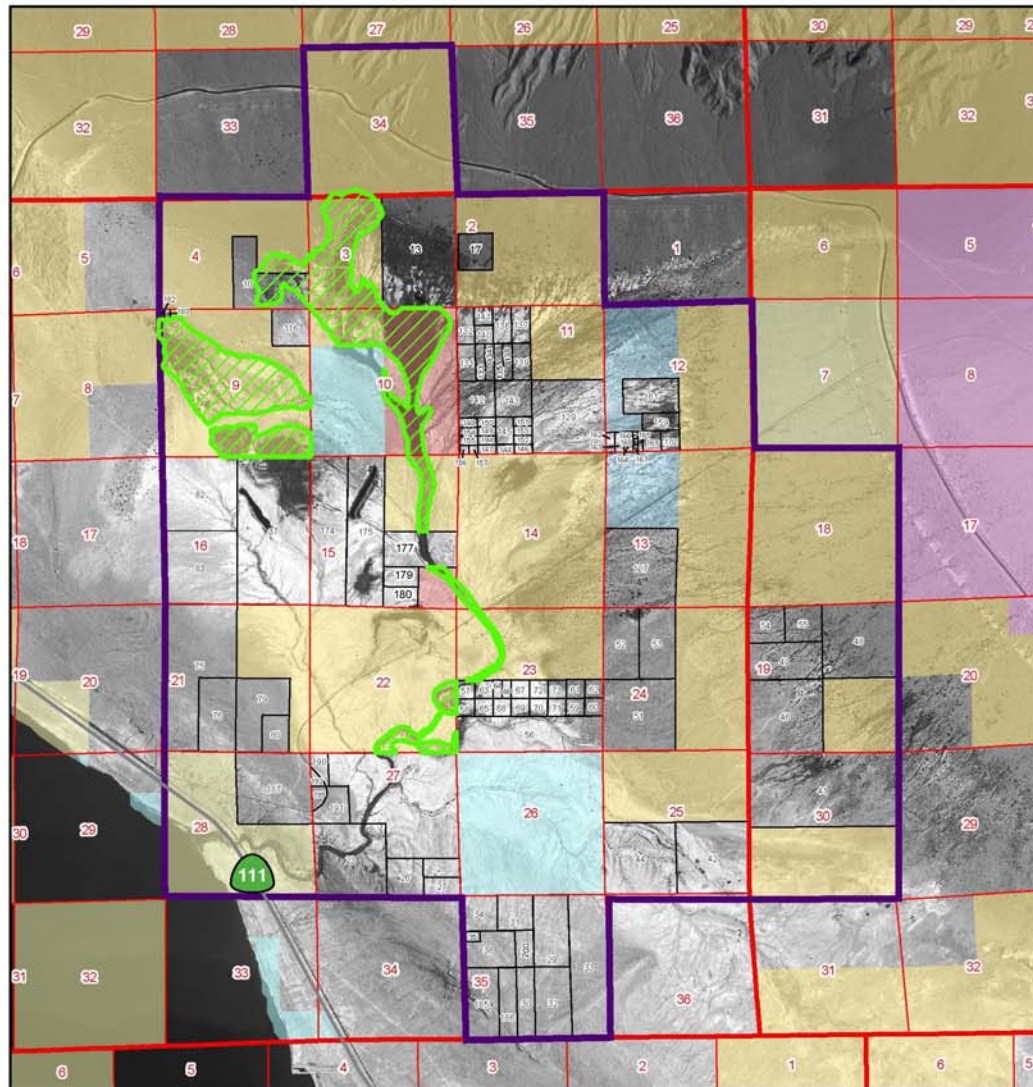
Dos Palmas Area Saltcedar Removal and Habitat Restoration

Dos Palmas Area Saltcedar Removal and Habitat Restoration, Riverside County

- | | |
|----------------|------------------------------|
| | Proposed Project |
| State | |
| | Parks and Recreation |
| | State Lands Commission |
| | Dept of Fish and Game |
| Federal | |
| | Bureau of Land Management |
| | Department of Defense |
| | US Fish and Wildlife Service |
| | Tribal Lands |

Dos Palmas Area Saltcedar Removal and Habitat Restoration, Riverside County

Dos Palmas ACEC

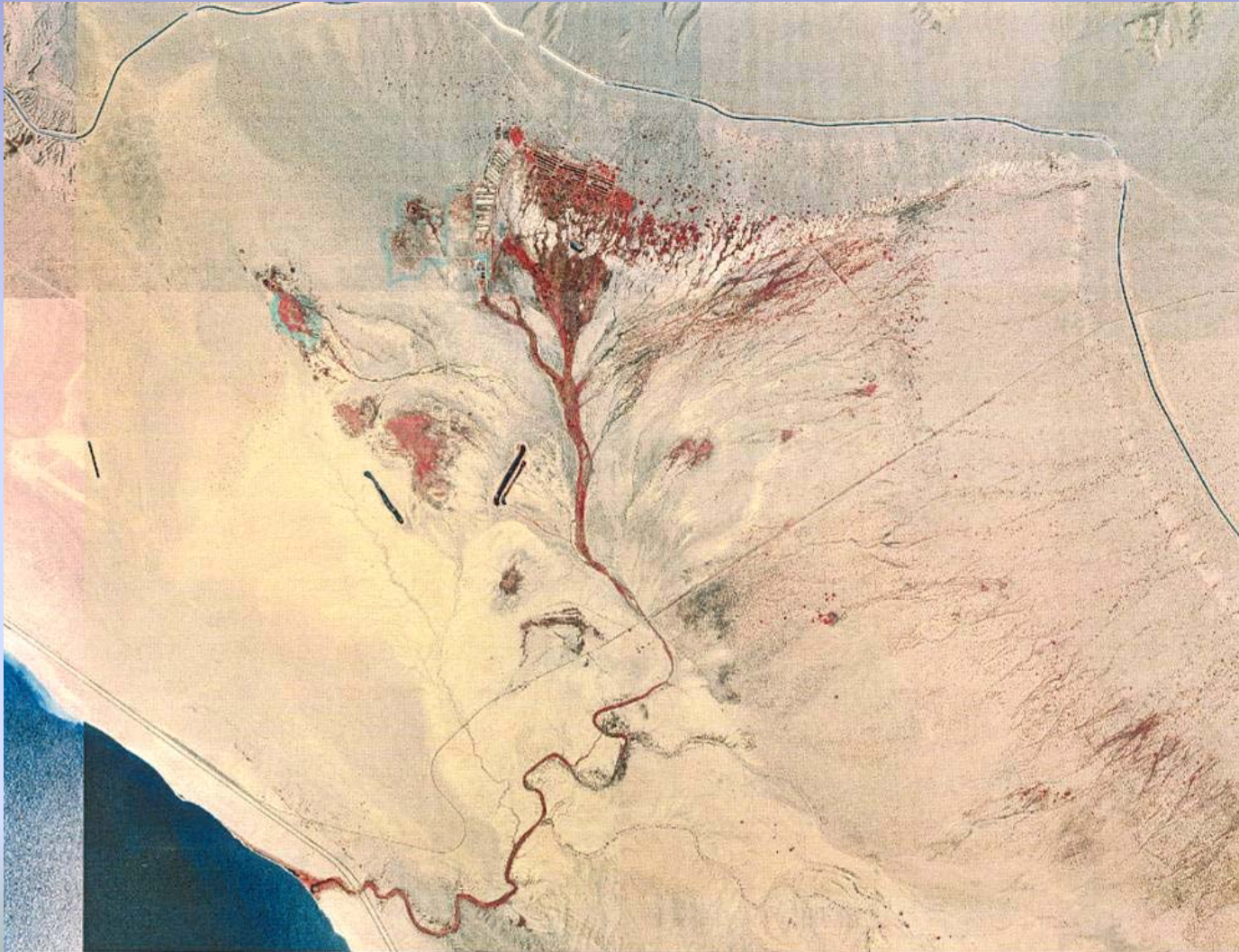


Legend

- Tamarisk Removal Sites
- Private Parcels
- Dos Palmas ACEC
- Bureau of Land Management
- Forest Service
- National Park Service
- Bureau of Reclamation
- US Fish and Wildlife Service
- Military
- State Lands (Parcels to be acquired by partners)
- County / City / Regional
- Nature Conservancy



Dos Palmas Area Saltcedar Removal and Habitat Restoration, Riverside County



Dos Palmas Area Saltcedar Removal and Habitat Restoration, Riverside County



Dos Palmas area. Green areas are where saltcedar has been sprayed with herbicide.

Dos Palmas Area Saltcedar Removal and Habitat Restoration, Riverside County

Before



After



One Year Later



Three Years Later



Dos Palmas Area Saltcedar Removal and Habitat Restoration, Riverside County

Yuma Clapper Rail



Desert Pupfish



COPYRIGHT © NOELLA BALLENGER

San Joaquin River Parkway, Friant Cove Public Access Augmentation #2

Millerton Lake SRA

Road 206

SJRC #4
-Wagner

SJRC #6-
River Vista Partners
Madera County

North Fork Rd

Fresno County

San Joaquin Hatchery

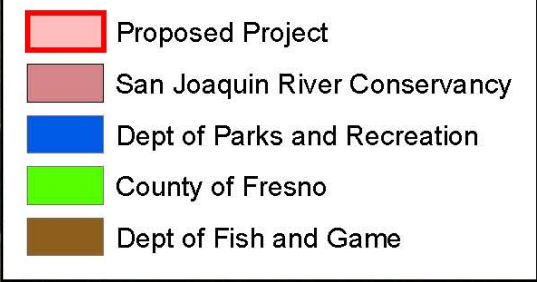
Millerton Rd

Lost Lake
Fishing Access

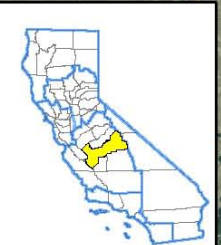
N Friant Rd

SJRC #2-Beck

Lost Lake Park



- Proposed Project
- San Joaquin River Conservancy
- Dept of Parks and Recreation
- County of Fresno
- Dept of Fish and Game



San Joaquin River Parkway Friant Cove Public Access Augmentation #2, Fresno County

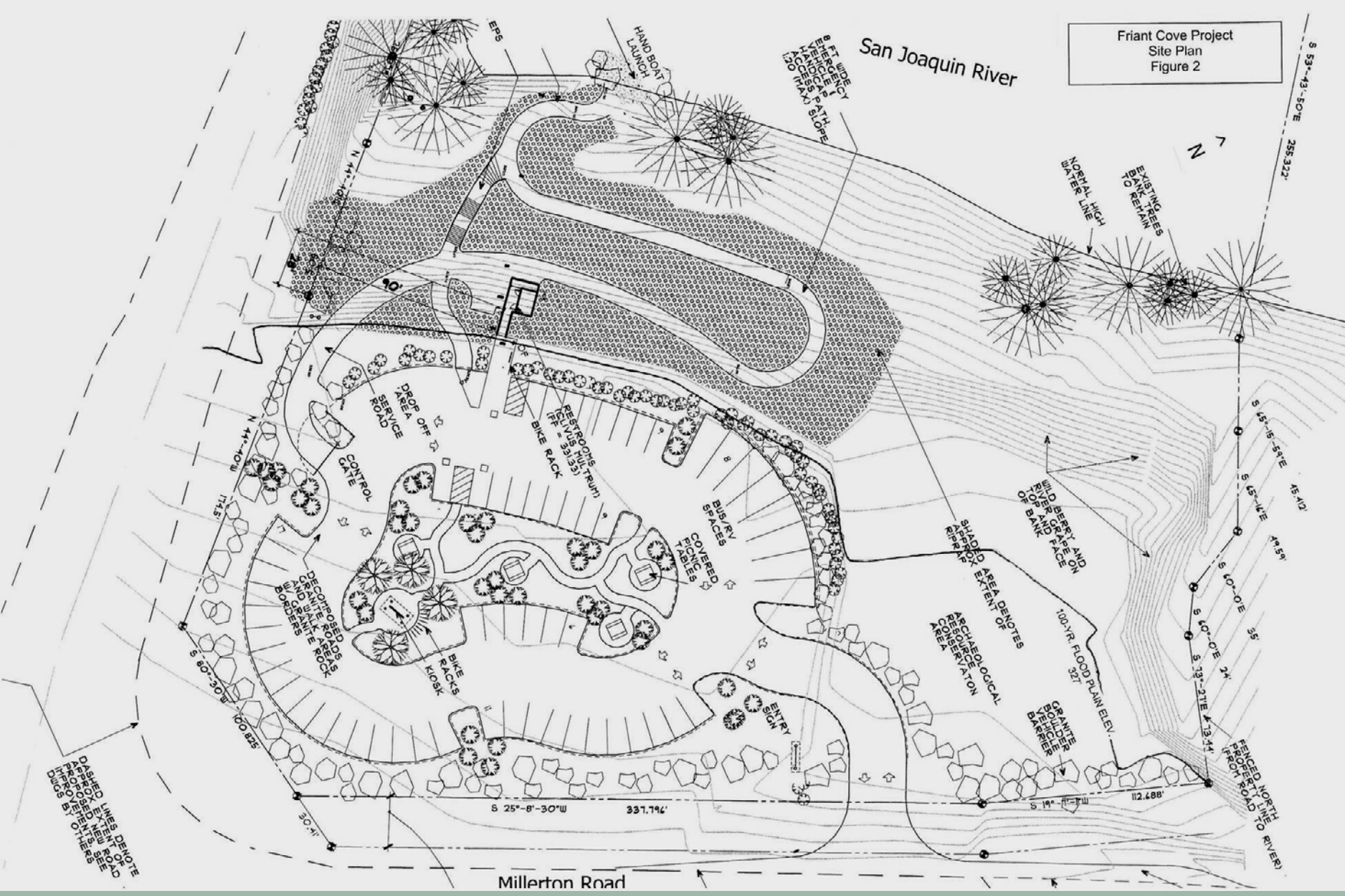
San Joaquin River Parkway, Friant Cove Public Access, Augmentation #2, Fresno County



Proposed parking area. The river is indicated by the tree-line. North Fork Road is on the left.

San Joaquin River Parkway, Friant Cove Public Access, Augmentation #2, Fresno County

Friant Cove Project
Site Plan
Figure 2



SHADDO LINES DENOTE APPROX. EXTENT OF RIVER

Millerton Road

FENCED NORTH LINE FROM ROAD TO RIVER

San Joaquin River Parkway, Friant Cove Public Access, Augmentation #2, Fresno County



Site of proposed car-top boat launch and terminus of barrier-free path.

San Joaquin River Parkway, Friant Cove Public Access, Augmentation #2, Fresno County



Canoes soon to be launched at site.

San Joaquin River Parkway, Habitat Restoration and Public Access, Jensen River Ranch, Phase I Augmentation, Fresno County



View of Jensen Ranch property, looking north, to be cleared of weedy species before construction begins.

San Joaquin River Parkway, Habitat Restoration and Public Access, Jensen River Ranch, Phase I Augmentation, Fresno County



Jensen Ranch Trail, San Joaquin River view.

San Joaquin River Parkway, Habitat Restoration and Public Access, Jensen River Ranch, Phase I Augmentation, Fresno County

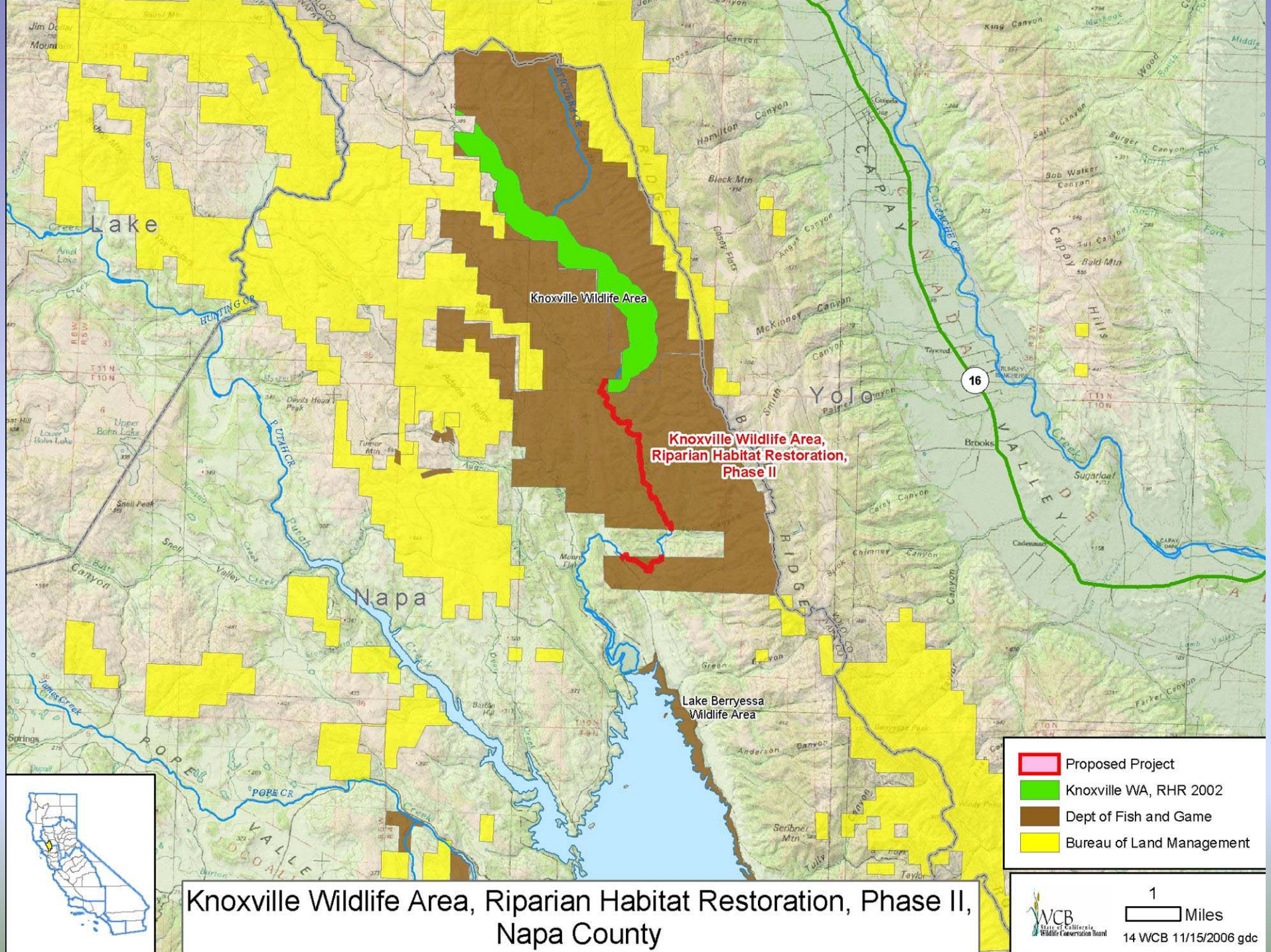


Stormwater treatment channel at Jensen River Ranch

San Joaquin River Parkway, Habitat Restoration and Public Access, Jensen River Ranch, Phase I Augmentation, Fresno County



MacMichael Trail to San Joaquin River



**Knoxville Wildlife Area,
Riparian Habitat Restoration,
Phase II**

- Proposed Project
- Knoxville WA, RHR 2002
- Dept of Fish and Game
- Bureau of Land Management

**Knoxville Wildlife Area, Riparian Habitat Restoration, Phase II,
Napa County**

Knoxville Wildlife Area, Riparian Habitat Restoration Phase II, Napa County



Untreated tamarisk is growing in the streambed of Elicuera Creek; this is a typical sight, and will be removed during this project.

Knoxville Wildlife Area, Riparian Habitat Restoration Phase II, Napa County



Piles of tamarisk that were cut by CDF crew earlier this year. These plants will resprout and the project will spray them with herbicide.

Knoxville Wildlife Area, Riparian Habitat Restoration Phase II, Napa County



The bright green plants are re-sprouting tamarisk , at the “whip” stage. This is the best stage for herbicide application, and these plants will be treated this year.

Knoxville Wildlife Area, Riparian Habitat Restoration Phase II, Napa County



This is a section of the creek that was treated in Phase I (finished in 2005) and is regenerating healthy native vegetation (willow, cattails, cottonwood, etc.)