

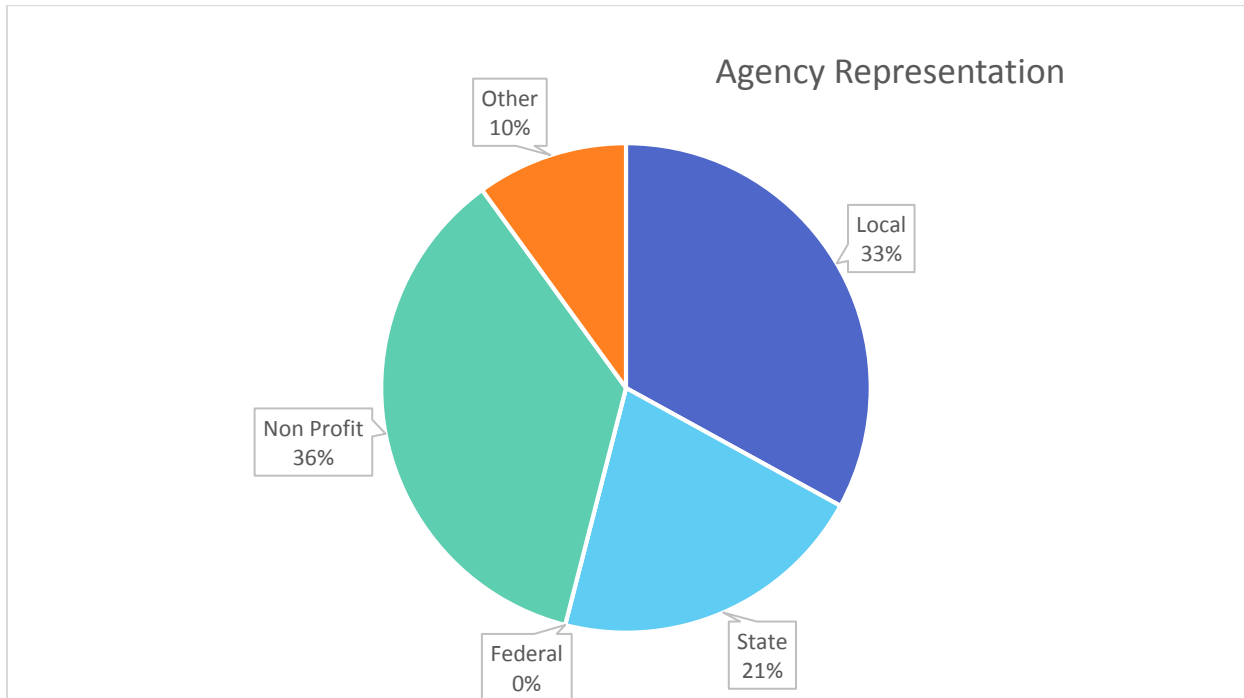
Wildlife Conservation Board
Public Access
2017 Survey Results



Question #1

Tell us about yourself.

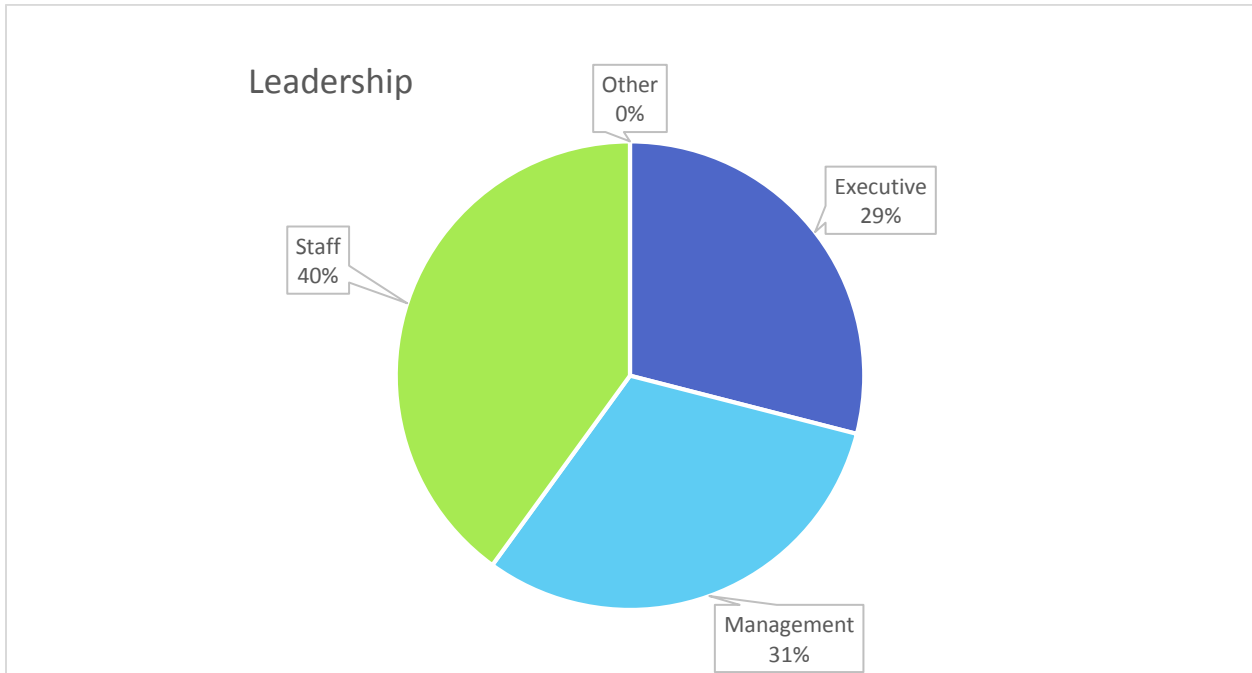
A. What type of agency do you represent?



Answer Choices	Responses	
Local	33%	33
State	21%	21
Federal	0%	0
Non Profit	36%	36
Other	10%	10
Total		100

Question #1 Tell us about yourself.

B. What option best describes you?



Answer Choices	Responses	
Executive	29%	29
Management	31%	31
Staff	40%	40
Other	0%	0
Total		100

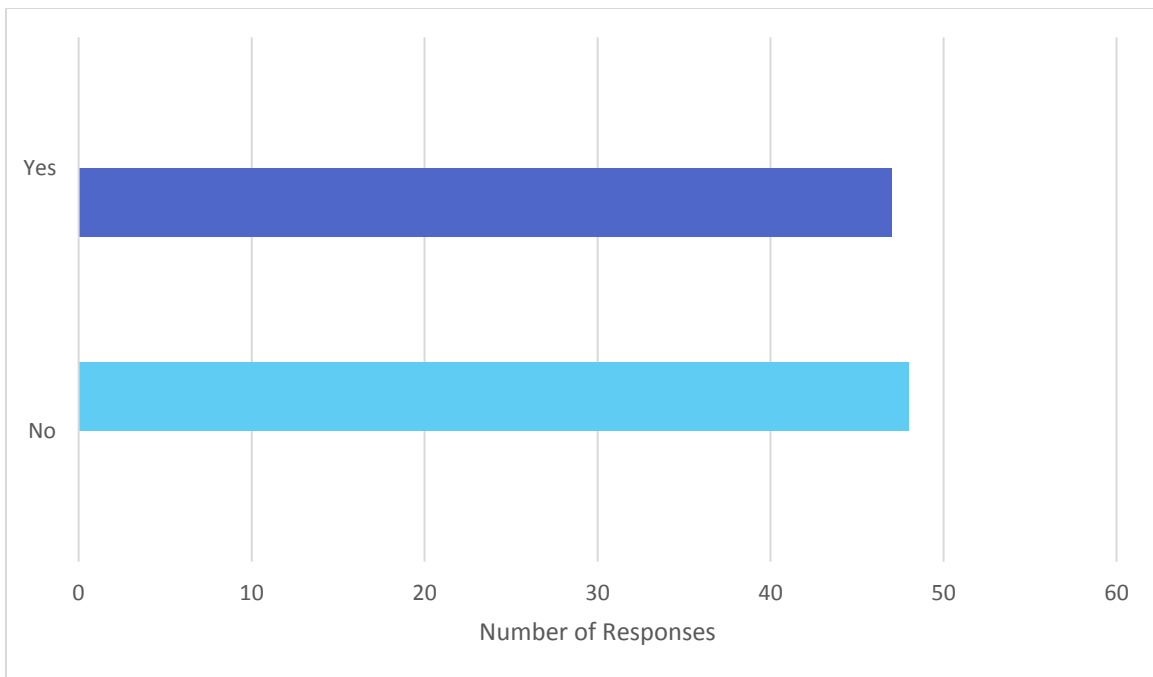
Question #1 Tell us about yourself.

C. How can we contact you?

Respondents provided various contact options and information.

Question #2

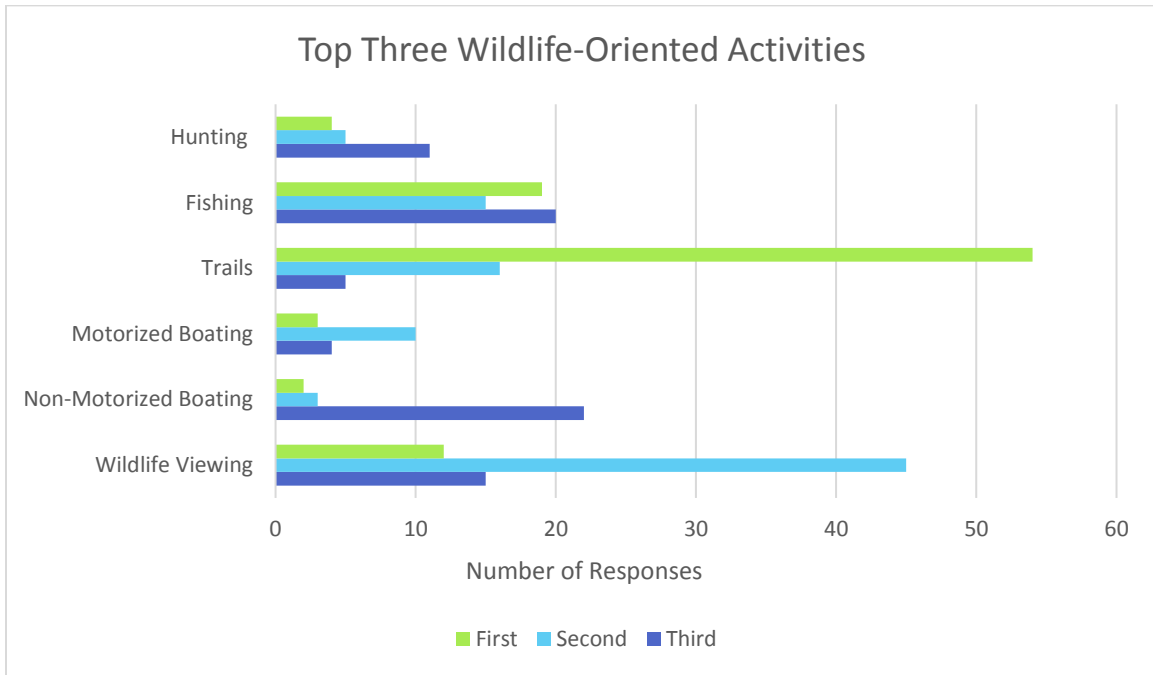
Does your organization have “match” funding available to contribute toward Public Access projects?



Answer Choices	Percentage based on Respondents (95)	Total Responses
Yes	49.47%	47
No	50.53%	48
Total		95

Question #3

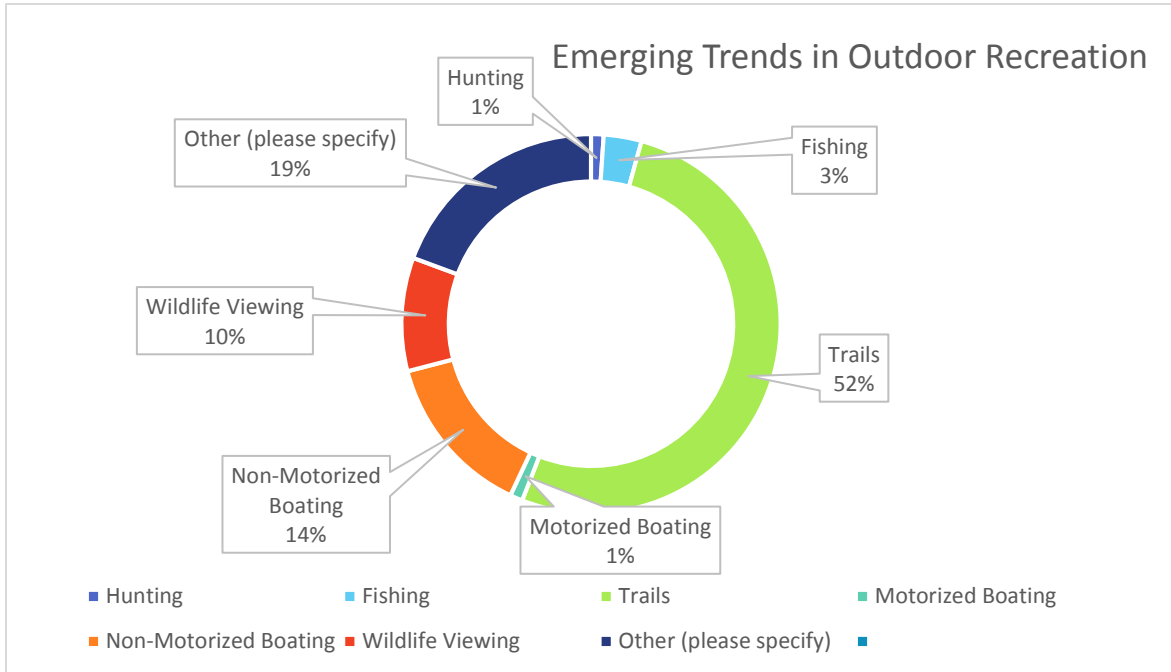
What are the top three wildlife-oriented activities in your region?



Ranking	Activity	First	Second	Third	Percentage based on category responses (265)	Total
#5	Hunting	4	5	11	8%	20
#3	Fishing	19	15	20	20%	54
#1	Trails	54	16	5	28%	75
#6	Motorized Boating	3	10	4	6%	17
#4	Non-Motorized Boating	2	3	22	10%	27
#2	Wildlife Viewing	12	45	15	27%	72
				Total	95 respondents	Total 265

Question #4

What top emerging trend in outdoor recreation is your region experiencing?



Answer Choices	Percentage based on Respondents (93)	Total Responses
Hunting	1%	1
Fishing	3%	3
Trails	52%	48
Motorized Boating	1%	1
Non-Motorized Boating	14%	13
Wildlife Viewing	10%	9
Other (please specify)	19%	18
Total		93

Question #5

What are the top three public access sites in your region?

74 respondents. The table below does not represent individual responses in order, rather shows all responses for each category, first, second, and third.

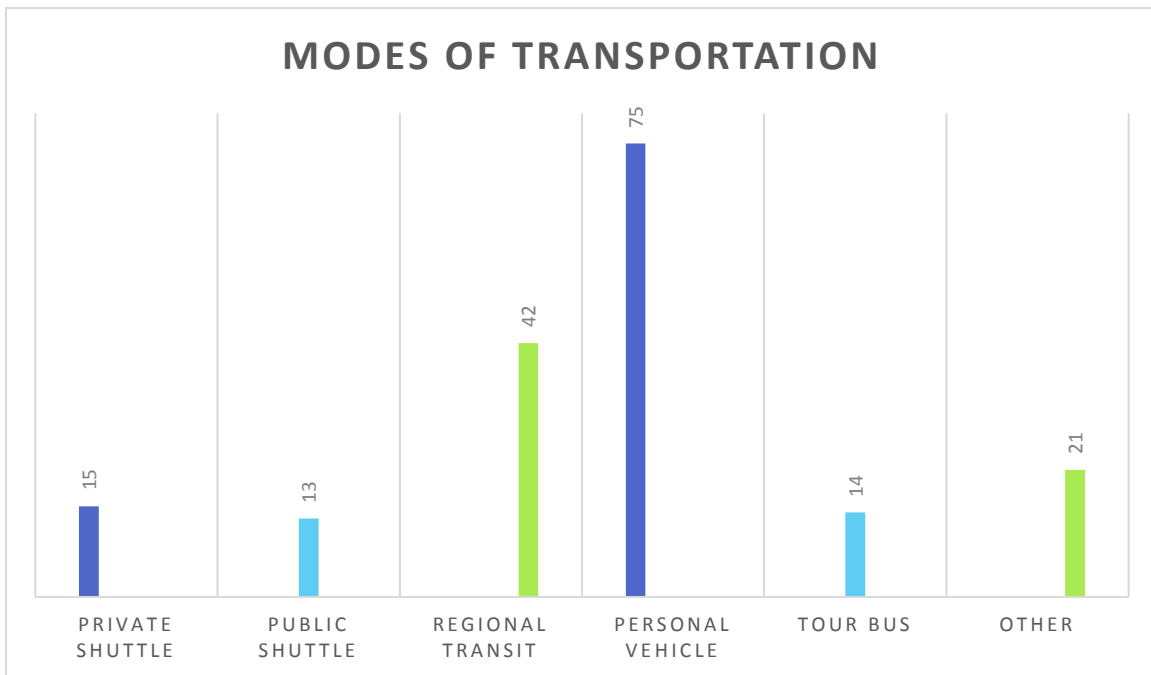
First	Second	Third
American River Trail	Abalone Cove Reserve	A number of iconic parks where redwoods dominate
Angeles National Forest, East Fork of San Gabriel River	Angeles National Forest	Agua Hedionda Lagoon
Avila and Olde Port Beaches	Arcata Marsh wetlands/trails/bay views - huge walking/birding attraction	Agua Hedionda Lagoon
Avila Beach	Avila Beach	American River
Bay Area Regional Parks	Bair Island and nearby Bay Trail	Aquatic Park
Bay Trail in East Bay Regional Parks	Ballona Wetlands	Baldwin Beach
Bay Trails along Richmond Shoreline	Batiquitos Lagoon	Cache Creek
Beaches	Batiquitos Lagoon Ecological Reserve	Candlestick Park
candlestick state park	Bay Trail	Candlestick Park
Canyon Dam Boat Launch to Lake Almanor	Bay Trail	Carrizo Plain
Coastal access	beaches	Channel Islands Jetty
Coastline (SLO to Monterey)	Bishop Creek	City of San Luis Obispo Open Space
Cobb estate/Sam Merrill trail	Blue Ridge - Cache Creek Natural Area	Clear Creek
Cold Canyon - Putah Creek State Wildlife Area	Bob Jones Trail	Coastal Access
Commons Beach	Butt Valley Reservoir	Colusa National Wildlife Refuge Complex
Coyote Point Recreation Area	Candlestick Park	Dolores Park
do not know	Carson Pass	East Bay Recreational
East Park Reservoir	Cattle Canyon, ANF, San Gabriel River	East Bay Regional Park District
Federal Lands (FWS, USFS, & BLM)	Chula Vista Boat Launch - Pepper Park	Eastshore State Park
GGNRA areas	Cosumnes River Preserve	Feather River
GGNRA Park System SF	Cosumnes River Preserve	forests
Golden Gate National Recreation Area	crissy field	Hamilton and Bay Trail
Golden Gate National Recreation Area	Davis Flat OHV park	Harford Landing
Golden Gate Park	Devil's Postpile NM (Red's Meadow Valley)	Harford Landing
Golden Gate Park	Dodson Marsh (nee Breuner)/Point Pinole	Harford Pier
Gray Lodge Wildlife Area	East Bay Regional Park District	Harford Pier
Harford Pier	El Dorado Beach	Kern River

First	Second	Third
Hellman Park Trailhead	Embarcadero	Lake Berryessa
Heron's Head Park	Emerald Bay	Lassen National Forest
Heron's Head Park	Fitzgerald Marine Reserve	Living Coast Discovery Center
Hope Valley	Fremont Older	Lower Owens River
Hueneme Pier	GGNRA Marin County	Lower section of LA River from Vernon to Long Beach, bike accss
Humboldt Bay, including Humboldt Bay National Wildlife Refuge	Golden Gate Park	McClaren Park
Independence Lake	Golden Gate Park	McLaren Park
India Basin park	Hacienda Hills Trailhead	Mirada Surf County Park
John McLaren Park	Harford and Avila Piers	Mission Bay
Joshua Tree National Park	India Basin Shoreline Park	Mojave Trail National Monument
Joshua Tree National Park	Jensen River Ranch MacMichael Trail	Monitor/Ebbetts passes
Lake Almanor	Lake Almanor Recreation Trail	Monterey Harbor & Beaches
Lake Almanor	Lake Calavera Preserve	Mount Whitney trailhead
Lake Almanor	Lake Millerton	Mountain Meadows Reservoir
Lake Calavera	Lake Solano - Putah Creek	Municipal Parks (especially Bidwell Park)
Lake Calavera Preserve	Lakes Basin	ocean beach
Lake Tahoe, itself	Los Padres National Forest	Pacific Ocean
Large Reservoirs (eg. Don Pedro)	Mammoth Lakes area	Plumas-Eureka State Park
Legion Park, Modesto	Miller-Knox Park	Point San Luis Lighthouse
Los Rios Ranchos, Oak Glen, CA	mission trails regional park (city of San Diego)	Point San Pablo Yacht Harbor
Lost Lake Park	Montana de Oro State Park	Pt. Isabel
Magnesia Spring Ecological Reserve	Mosquito Flat, Rock Creek	Pulgas Ridge
Mammoth Lakes Basin	Mount Tamalpais	Rancho La Costa Preserve
Mammoth Lakes Basin	Olde Port Beach	Rivers such as Stanislaus River
Mammoth Lakes Basin	Pacific Grove/Monterey Recreation Trail	Rosie the Riveter WW II National Hist. Park
Marina Del Rey	Point Pinole Regional Park	San Jacinto Wildlife Area
McLaren Park	Presidio	Shady Rest/Inyo Craters
Mission Trails Regional Park	Presidio	Shaver Lake
ocean beach - dog beach area (cityof San Diego)	Sacramento River	Stanislaus National Forest
Pacific Coast	San Bruno Mtn State Park	Stern Grove
parks	San Joaquin River	Stevenson's Bridge - Putah Creek
Point San Luis Lighthouse	Sand to Snow National Monument	Sycamore Island
Portuguese Bend Reserve	Santa Barbara front country access day hiking biking	Tahoe Rim Trail
Presidio/Crissy Filed	Santa Rosa Plateau	Tehachapi Mountain Park
Pt. Lobos St. Park	Santa Rosa Plateau Ecological Reserve	Turnbull Canyon
Rancho San Antonio	Santa Rosa San Jacinto Mtns. Nat'l Monument	walker preserve (Santee)
Richmodn Harbourmasters	State (State Parks, CDFW, & public WCB-funded parcels)	Waterfront
Rosie the Rivieter	Trailer Boat Launch	White Point Nature Preserve
San Jacinto Wildlife Area	Turlock Lake SP campground	Whitewater Preserve
San Joaquin River	Upper Butte Basin Wildlife Area	Whitewater Preserve, west of Palm Springs, CA
San Luis Obispo County beaches	various County Parks	

First	Second	Third
Shelter Island Boat Launch	Ventura Pier	
Tilden Park	Wildlife Refuges (San Luis Refuge)	
Tilden Regional Park	Wind Wolves Preserve, south of Bakersfield, CA	
Whiskeytown Lake		
Wind Wolves Preserve		
Winters Putah Creek Park		

Question #6

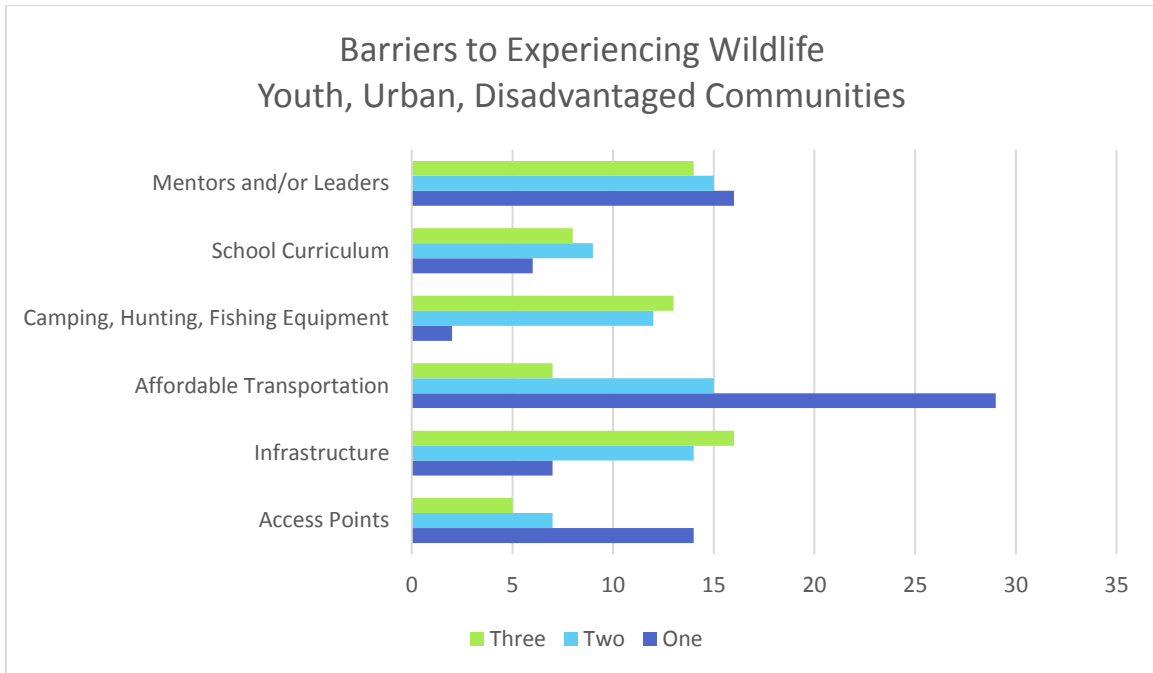
What modes of transportation are available to access the top three public access sites?



Answer Choices	Percentage based on Respondents (78)	Total Responses
Personal Vehicle	96%	75
Regional Transit	54%	42
Tour bus	18%	14
Private Shuttle	19%	15
Public Shuttle	17%	13
Other (please specify)	27%	21
Total	78 respondents	179

Question #7

Select the top three barriers to getting youth, urban, or disadvantaged community residents to experience wildlife oriented recreation.

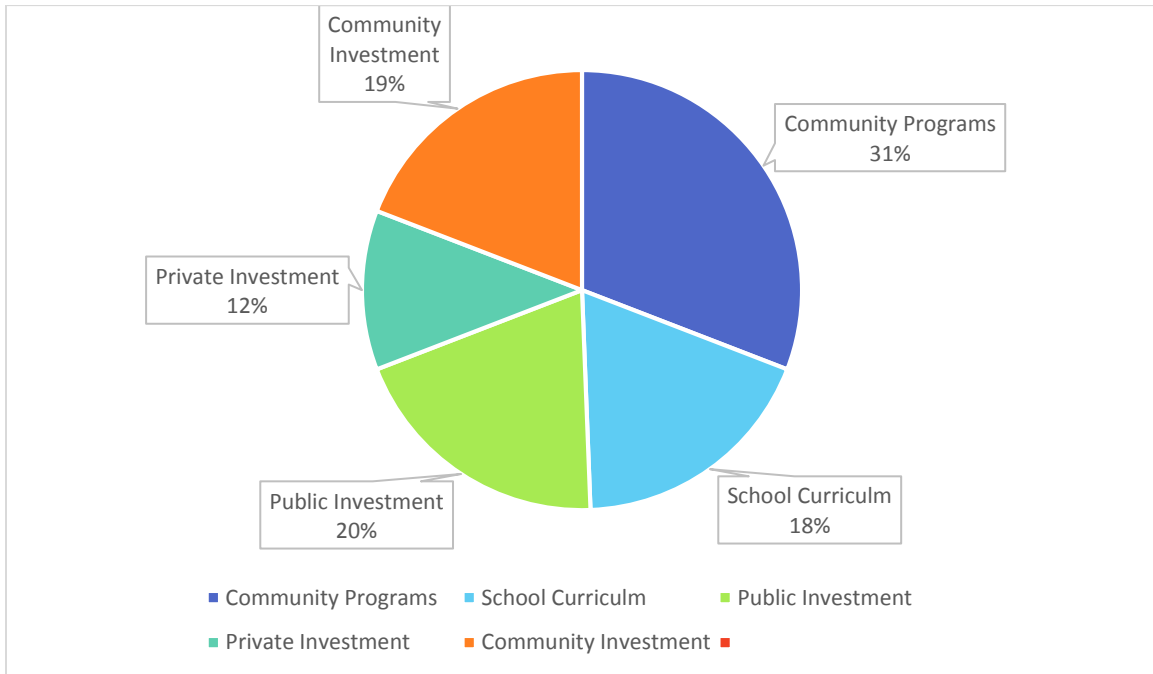


Percentage in chart and table based on votes per category (209 total) per 78 respondents.

Answer Choices	One	Two	Three	Total
Access Points	14	7	5	26 12%
Infrastructure	7	14	16	37 18%
Affordable Transportation	29	15	7	51 24%
Camping, Hunting, Fishing Equipment	2	12	13	27 13%
School Curriculum	6	9	8	23 11%
Mentors and/or Leaders	16	15	14	45 22%
Total 78 respondents				209

Question #8

What efforts are under way to address these barriers?

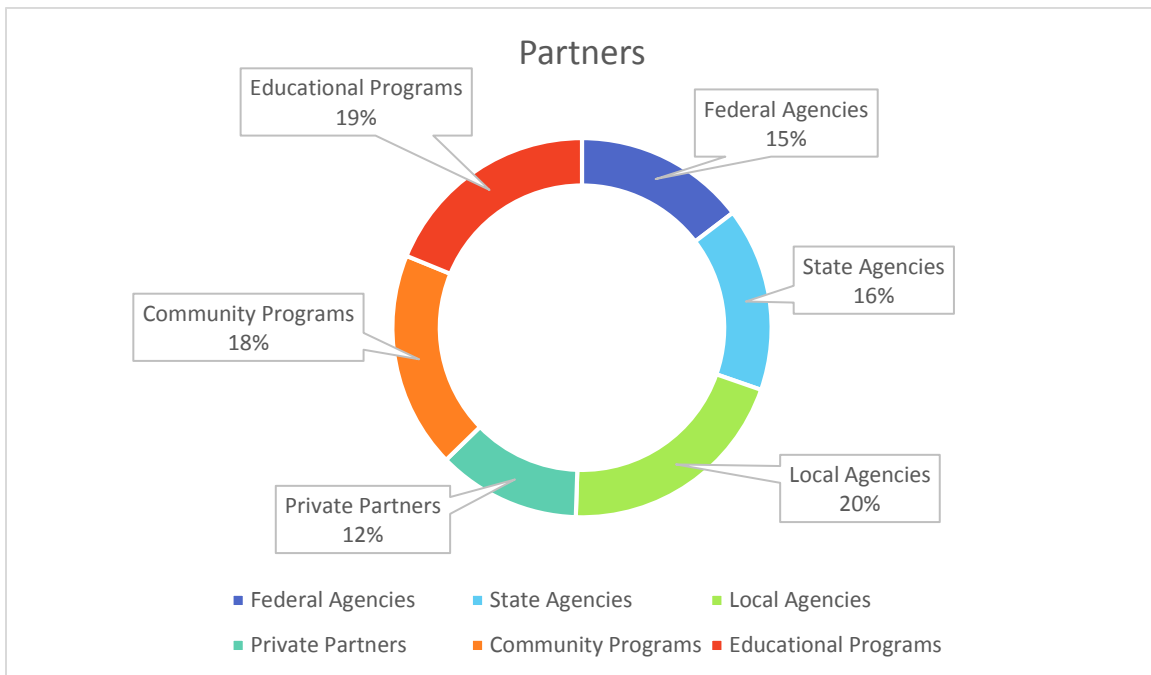


Percentage in chart based on votes per category (162 total) per 66 respondents

Answer Choices	Percentage based on Respondents (66)	Total Responses
Community Programs	76%	50
School Curriculum	45%	30
Public Investment	48%	32
Private Investment	29%	19
Community Investment	47%	31
Comments		23
Total	66 respondents	162

Question #9

Who do you partner with to encourage and support public access to nature and wildlife?

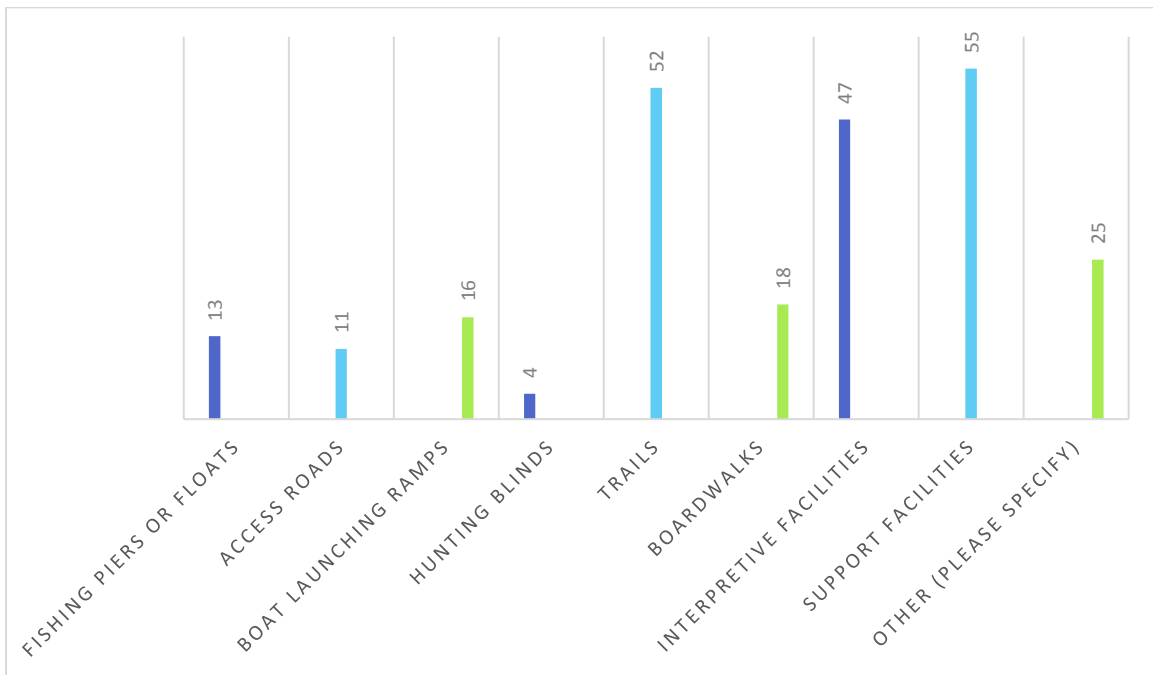


Percentage in chart based on votes per category (287 total) per 76 respondents

Answer Choices	Percentage based on Respondents (76)	Total Responses
Federal Agencies	55%	42
State Agencies	59%	45
Local Agencies	76%	58
Private Partners	46%	35
Community Programs	70%	53
Educational Programs	71%	54
Comments		26
Total	76 respondents	287

Question #10

How can the WCB Public Access Program best partner with you to encourage youth and disadvantaged communities to experience California’s wildlife-oriented recreation opportunities?



Answer Choices	Percentage based on Respondents (76)	Total Responses
Fishing Piers or Floats	17%	13
Access Roads	14%	11
Boat Launching Ramps	21%	16
Hunting Blinds	5%	4
Trails	68%	52
Boardwalks	24%	18
Interpretive Facilities	62%	47
Support Facilities (parking lots, restrooms, bus turnouts)	72%	55
Other (please specify)	33%	25
Total	76 respondents	287

Appendix A

The survey was generally presented in a multiple-choice styled format. The option was left open to provide additional comments after most all of the questions. Those responses are provided here, in Appendix A. At the end of a comment, parentheses with a number (1) refers to the number of respondents with the same comment.

Question #3. What are the top three wildlife-oriented activities in your region?

- Habitat restoration (2) for endangered species (1)
- Wildlife Photography
- Native plants
- Conservation (2)
- Watershed projects
- Off highway vehicles
- Camping

Question #4. What top emerging trend in outdoor recreation is your region experiencing?

- bicycling, urban and trail (6)
- Volunteer service, Volunteerism in stewardship of open space, trail building, shoreline cleanups, environmental etc. (2)
- Trails are becoming more popular for large groups rather than the solitary hiker
- Citizen science, monitoring and reporting
- Off highway vehicles
- General Outdoor recreation (3)
- geocaching
- Stand Up Paddle

Question #6. What modes of transportation are available to access the top three public access sites?

- Hotel shuttles to the beach
- Biking, walking (13)
- Ride sharing
- Company vehicle or rental for youth program
- Boat
- Trolley; kayak; boat (2)

Question #7. Select the top three barriers to getting youth, urban, or disadvantaged community residents to experience wildlife-oriented recreation.

- Lack of awareness & interest; Internet addiction; Lack of high-interest programming to involve urban youth (5)
- organizational infrastructure: communications to public, planning, staff to organize, lead, coordinate
- All 6 of these are equal in my mind and apparent from my work here in Los Angeles
- None (2)
- Cultural barriers (language, fears, working parents) (2)
- Expensive lodging costs and lack of "hosting" facilities (i.e., support for staying somewhere) (3)
- Location, remote nature of area, lack of swimming hole (3)

Question #8. What efforts are underway to address these barriers?

- I am unaware of any significant efforts (7)
- The Wilderness Society's Urban to Wild Program
- In SF, Youth Stewardship program makes the park system addresses this in SF
- Latinos outdoors
- Northern California Regional Land Trust, Outdoor Education for All, Chico State Ecological Reserves, School Districts
- Almanor Recreation & Parks District, Plumas Unified School District, PG&E
- MLK Center, Redding programs; Parks & Rec Dept.
- Groundwork Richmond "Summer Adventures Program"
- Alpine Trails Association, small outdoors program through small local school
- Climate Kids/Climate Science Alliance; Parks Express Bus Program
- NGO-Winters Friends of Putah Creek
- OBA (Outward Bound Adventures)
- Lots of groups in Tahoe Area - Boys and Girls Club, SOS, etc.
- East Side Recreation Coalition, Caribou Alliance for Trails,
- Carmel R. Watershed Conservancy; O'Niell Sea Odyssey; Boy Scouts
- San Gabriel Mountains Forever Training Programs for youth
- Eastern Sierra Youth Outdoors; Eastern Sierra Interpretive Association; Mammoth Lakes Trail System

Question #9. Who do you partner with to encourage and support public access to nature and wildlife?

- Education Outside, SFUSD, Youth Stewardship Program (SF Rec and Park)
- Presidio of San Francisco
- Youth Stewardship Program (San Francisco Rec & Parks Dept.)

- non-profit bay.org, Golden Gate Audubon Society
- this is not part of our current work
- We provide free outdoor education to local schools most are title 1. We host free docent lead hikes and workshops.
- Youth Stewardship Program and national park service are very accessible and supportive. I think we have excellent opportunities here, you can be very selective.
- Latino outdoors
- Feather River Land Trust, Outdoor Education for All & School Districts
- Unified public school districts, primarily Title 1 schools; Boys & Girls Clubs; Community Foundations; private school multi-day programs; Boy & Girl scouts; churches, such as LDS, with a strong volunteering ethic;
- ARPD Trails Committee, Caribou Alliance for Trails, Plumas Unified School District
- US National Park Service; East Bay Regional Park District; City of Richmond
- nonprofit partners
- CDFW, WCB, Federal LCC, SANDAG, EBRPD
- Friends of Huddart and Wunderlich, Friends of Fitzgerald, CuriOdyssey
- Climate Science Alliance; I don't work directly with other programs (not my focus)
- land conservancies
- USFS, CA State Parks, PUDS, Cities, Tahoe Lakefront Owners' Association, LTCC, US Coast Guard Lake Tahoe, etc.
- CA Dept. of Boating and Waterways, Learning Landscapes, PG&E Stewardship Council
- Nonprofits - Tahoe Institute for Natural Science
- FEMA
- Not our primary role; Monterey Peninsula Regional Park Dist.; CRWC
- The programs that have a wildlife or habitat focus, not just recreation
- SG Mtns. Forever, Amigos de Los Rios, Watershed Conservation Authority
- Eastern Sierra Interpretive Association; Friends of the Inyo; Mammoth Lakes Trails & Public Access; Alpine Watershed Group; Alpine Trails Association; Eastern Sierra Land Trust
- Non-profits

Question #10. How can the WCB Public Access Program best partner with you to encourage youth and disadvantaged communities to experience California's wildlife-oriented recreation opportunities?

- funds to improve existing lands that are already accessible to the public but in need of repair
- Help with grant information
- Develop high-interest programs, both educational and for leisure/recreation, specifically targeting urban youth (conduct focus groups for targeted youth; provide such form of appropriate compensation for participating in a group)
- staff support to organize, promote, lead public access opportunities

- Affordable access options
- have engaging culturally relevant programming
- Please fund staff. This is the biggest barrier to providing opportunities for young and disadvantaged people.
- Facilitation of citizen science projects
- Support actual programs chaperoning DAC members' access to existing open spaces (i.e., transportation, mentor time, etc.) RATHER than infrastructure. Support for acquisition of publicly accessible lands is good too.
- capital improvements for Mothers with young children ("Bridge to Adventure"); funding programs, such as "teach families to camp", "teach kids to fish", "teach young people hunting and tracking skills"
- transportation to remote access points
- Equipment libraries; funding for lunch and staff time in low income communities is essential
- Better definition of DAC that is relevant to rural, mountainous California (i.e. not EnviroScreen)
- Transportation; curriculum; overcoming the CDFW reluctance to work nonprofit partners.
- swimming piers or floats, obtaining public access ROW
- Funding to help prepare adult learners for jobs in hospitality, tourism, and recreation
- provide transport action funding
- support cost to bus students in - help pay for cost of transportation for kids
- Support area youth outdoor programs
- Habitat restoration projects are required to provide access. Funding the needed access to be able to secure permits and complete the project would be most helpful.
- Partner on land acquisition
- River Recreation Center, Transportation (Bussing) Costs
- Programmatic support linked to HSU could be a way to bring youth to the region for a stay in dorms perhaps, with interpretive opportunities, combining fun with outdoor classroom - it would be ideal to include families IMO. I have ideas, but this is not my formally assigned staff area. Under 'trails' above - completing the Coastal Trail would make resource areas directly- and affordably - accessible for school field trips.
- Have a local contact that can share information about your programs, especially those geared for DACs.
- Environmental Education